

Data Path : Z:\VOASRV\HPCHEM1\MSVOA R\DATA\VR101518\
 Data File : VR026078.D
 Acq On : 15 Oct 2018 17:53
 Operator : SY/MD
 Sample : VSTDCCC005
 Misc : 25mL/MSVOA R/WATER
 ALS Vial : 10 Sample Multiplier: 1

Instrument :
 MSVOA_R
 ClientSampleId :

Quant Time: Oct 16 08:18:46 2018
 Quant Method : Z:\VOASRV\HPCHEM1\MSVOA_R\METHODS\SOMRTR101518WMA.M
 Quant Title : TRACE VOA SOM01.0
 QLast Update : Mon Oct 15 17:34:12 2018
 Response via : Initial Calibration

| Internal Standards | R.T. | QIon | Response | Conc | Units | Dev(Min) |
|----------------------------|-------|------|----------|------|-------|----------|
| 1) 1,4-Difluorobenzene | 8.46 | 114 | 679228 | 5.00 | ug/L | 0.00 |
| 28) Chlorobenzene-d5 | 11.29 | 117 | 579226 | 5.00 | ug/L | 0.00 |
| 60) 1,4-Dichlorobenzene-d4 | 13.23 | 152 | 219150 | 5.00 | ug/L | 0.00 |

System Monitoring Compounds

| | | | | | | |
|--------------------------------|--------|-------|----------|----------|------|---------|
| 4) Vinyl Chloride-d3 | 2.15 | 65 | 267725 | 4.50 | ug/L | 0.00 |
| Spiked Amount | 5.000 | Range | 40 - 130 | Recovery | = | 90.00% |
| 7) Chloroethane-d5 | 2.63 | 69 | 223883 | 4.38 | ug/L | 0.00 |
| Spiked Amount | 5.000 | Range | 65 - 130 | Recovery | = | 87.60% |
| 11) 1,1-Dichloroethene-d2 | 3.63 | 63 | 651612 | 4.46 | ug/L | 0.01 |
| Spiked Amount | 5.000 | Range | 60 - 125 | Recovery | = | 89.20% |
| 20) 2-Butanone-d5 | 6.59 | 46 | 239609 | 49.10 | ug/L | 0.00 |
| Spiked Amount | 50.000 | Range | 40 - 130 | Recovery | = | 98.20% |
| 24) Chloroform-d | 7.20 | 84 | 431035 | 4.56 | ug/L | 0.00 |
| Spiked Amount | 5.000 | Range | 70 - 125 | Recovery | = | 91.20% |
| 26) 1,2-Dichloroethane-d4 | 7.90 | 65 | 184033 | 4.68 | ug/L | 0.00 |
| Spiked Amount | 5.000 | Range | 70 - 130 | Recovery | = | 93.60% |
| 32) Benzene-d6 | 7.85 | 84 | 852484 | 4.58 | ug/L | 0.00 |
| Spiked Amount | 5.000 | Range | 70 - 125 | Recovery | = | 91.60% |
| 36) 1,2-Dichloropropane-d6 | 8.90 | 67 | 221186 | 4.60 | ug/L | 0.00 |
| Spiked Amount | 5.000 | Range | 60 - 140 | Recovery | = | 92.00% |
| 41) Toluene-d8 | 9.97 | 98 | 831218 | 4.73 | ug/L | 0.00 |
| Spiked Amount | 5.000 | Range | 70 - 130 | Recovery | = | 94.60% |
| 43) trans-1,3-Dichloropropene- | 10.24 | 79 | 59916 | 4.76 | ug/L | 0.00 |
| Spiked Amount | 5.000 | Range | 55 - 130 | Recovery | = | 95.20% |
| 46) 2-Hexanone-d5 | 10.59 | 63 | 196074 | 53.87 | ug/L | 0.00 |
| Spiked Amount | 50.000 | Range | 45 - 130 | Recovery | = | 107.74% |
| 57) 1,1,2,2-Tetrachloroethane- | 12.36 | 84 | 91216 | 4.84 | ug/L | 0.00 |
| Spiked Amount | 5.000 | Range | 65 - 120 | Recovery | = | 96.80% |
| 64) 1,2-Dichlorobenzene-d4 | 13.52 | 152 | 161754 | 4.67 | ug/L | 0.00 |
| Spiked Amount | 5.000 | Range | 80 - 120 | Recovery | = | 93.40% |

Target Compounds

| Target Compounds | R.T. | QIon | Response | Conc | Units | Ovalue |
|--------------------------------|------|------|----------|--------|--------|--------|
| 2) Dichlorodifluoromethane | 1.83 | 85 | 200077 | 4.385 | ug/L | 96 |
| 3) Chloromethane | 2.01 | 50 | 341488 | 4.713 | ug/L | 96 |
| 5) Vinyl chloride | 2.16 | 62 | 327010 | 4.531 | ug/L | 97 |
| 6) Bromomethane | 2.53 | 94 | 209722 | 4.400 | ug/L | 96 |
| 8) Chloroethane | 2.66 | 64 | 207839 | 4.647 | ug/L | 97 |
| 9) Trichlorofluoromethane | 2.93 | 101 | 202815 | 1.946 | ug/L # | 58 |
| 10) 1,1,2-Trichloro-1,2,2-trif | 3.68 | 101 | 291280 | 4.689 | ug/L | 99 |
| 12) 1,1-Dichloroethene | 3.63 | 96 | 310719 | 4.704 | ug/L | 92 |
| 13) Acetone | 3.69 | 43 | 246102 | 48.780 | ug/L | 96 |
| 14) Carbon disulfide | 3.94 | 76 | 831828 | 4.817 | ug/L | 99 |
| 15) Methyl Acetate | 4.19 | 43 | 64063 | 4.861 | ug/L | 99 |
| 16) Methylene chloride | 4.40 | 84 | 273738 | 4.570 | ug/L | 95 |
| 17) Methyl tert-butyl Ether | 4.90 | 73 | 296093 | 4.938 | ug/L | 97 |
| 18) trans-1,2-Dichloroethene | 4.88 | 96 | 238506 | 4.775 | ug/L | 99 |
| 19) 1,1-Dichloroethane | 5.69 | 63 | 449514 | 4.793 | ug/L | 99 |
| 21) 2-Butanone | 6.69 | 43 | 292026 | 50.175 | ug/L | 97 |
| 22) cis-1,2-Dichloroethene | 6.68 | 96 | 234303 | 4.959 | ug/L # | 99 |

Data Path : Z:\VOASRV\HPCHEM1\MSVOA R\DATA\VR101518\
 Data File : VR026078.D
 Acq On : 15 Oct 2018 17:53
 Operator : SY/MD
 Sample : VSTDCCC005
 Misc : 25mL/MSVOA R/WATER
 ALS Vial : 10 Sample Multiplier: 1

Instrument :
 MSVOA_R
 ClientSampleId :

Quant Time: Oct 16 08:18:46 2018
 Quant Method : Z:\VOASRV\HPCHEM1\MSVOA_R\METHODS\SOMRTR101518WMA.M
 Quant Title : TRACE VOA SOM01.0
 QLast Update : Mon Oct 15 17:34:12 2018
 Response via : Initial Calibration

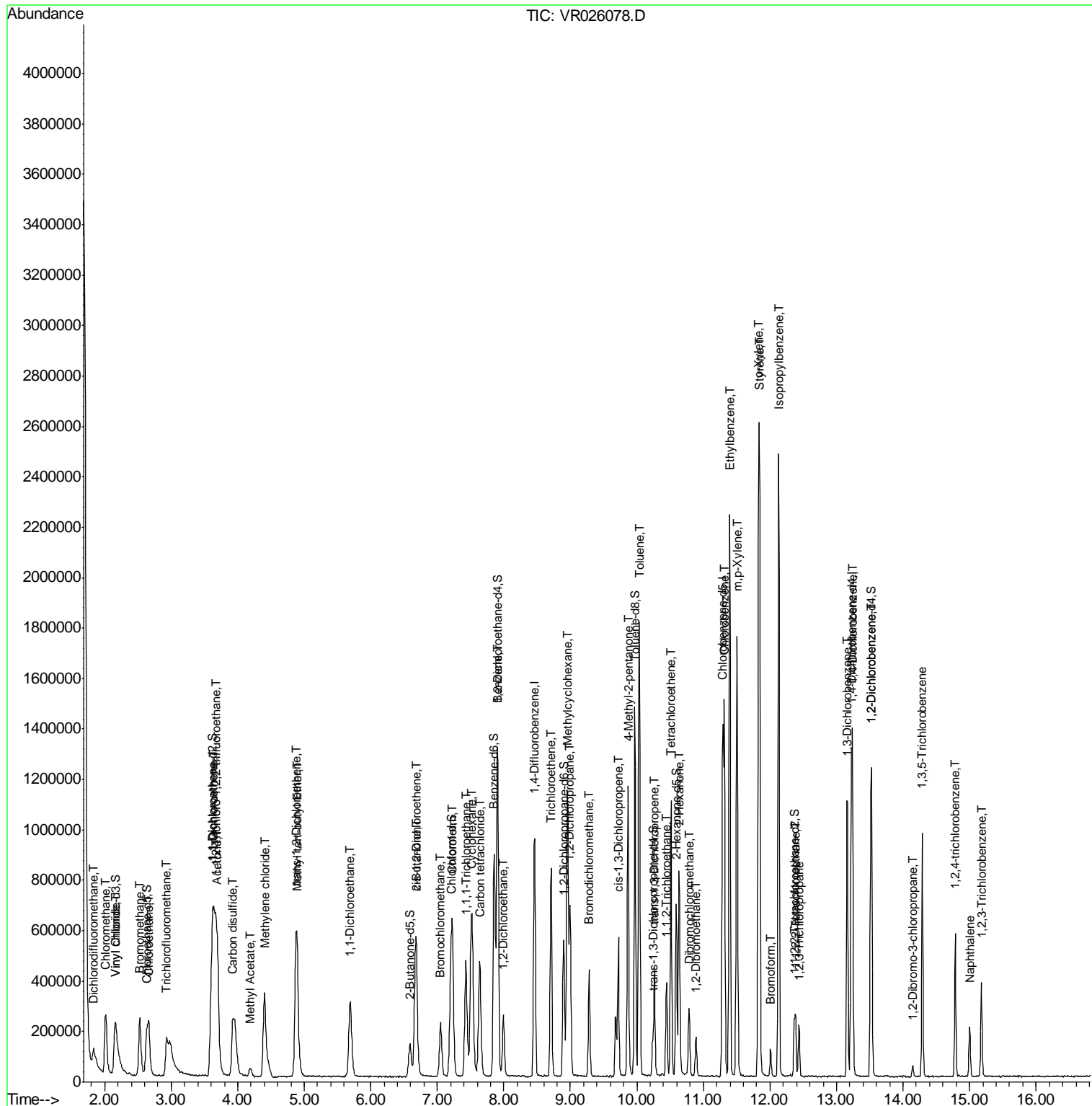
| Internal Standards | R.T. | QIon | Response | Conc | Units | Dev(Min) |
|--------------------------------|-------|------|----------|--------|--------|----------|
| 23) Bromochloromethane | 7.04 | 128 | 63802 | 4.814 | ug/L | 86 |
| 25) Chloroform | 7.23 | 83 | 437805 | 4.783 | ug/L | 97 |
| 27) 1,2-Dichloroethane | 7.99 | 62 | 215452 | 4.809 | ug/L | 99 |
| 29) 1,1,1-Trichloroethane | 7.43 | 97 | 383370 | 4.844 | ug/L | 99 |
| 30) Cyclohexane | 7.51 | 56 | 409053 | 5.149 | ug/L | 98 |
| 31) Carbon tetrachloride | 7.64 | 117 | 348729 | 4.846 | ug/L | 98 |
| 33) Benzene | 7.91 | 78 | 1052541 | 4.843 | ug/L | 100 |
| 34) Trichloroethene | 8.71 | 95 | 270647 | 4.865 | ug/L | 96 |
| 35) Methylcyclohexane | 8.95 | 83 | 420116 | 5.073 | ug/L | 98 |
| 37) 1,2-Dichloropropane | 9.00 | 63 | 222088 | 4.843 | ug/L | 99 |
| 38) Bromodichloromethane | 9.28 | 83 | 248139 | 5.032 | ug/L | 96 |
| 39) cis-1,3-Dichloropropene | 9.72 | 75 | 268020 | 5.107 | ug/L | 99 |
| 40) 4-Methyl-2-pentanone | 9.87 | 43 | 738521 | 52.738 | ug/L | 99 |
| 42) Toluene | 10.04 | 91 | 1139067 | 4.966 | ug/L | 100 |
| 44) trans-1,3-Dichloropropene | 10.26 | 75 | 188294 | 5.135 | ug/L | 97 |
| 45) 1,1,2-Trichloroethane | 10.45 | 97 | 94770 | 4.900 | ug/L | 93 |
| 47) Tetrachloroethene | 10.51 | 164 | 181934 | 4.580 | ug/L | 96 |
| 48) 2-Hexanone | 10.63 | 43 | 487962 | 53.351 | ug/L | 99 |
| 49) Dibromochloromethane | 10.79 | 129 | 113944 | 5.235 | ug/L | 99 |
| 50) 1,2-Dibromoethane | 10.89 | 107 | 84507 | 5.057 | ug/L | 91 |
| 51) Chlorobenzene | 11.32 | 112 | 620717 | 4.888 | ug/L | 98 |
| 52) Ethylbenzene | 11.39 | 91 | 1331855 | 5.049 | ug/L | 100 |
| 53) m,p-Xylene | 11.50 | 106 | 485947 | 5.056 | ug/L | 99 |
| 54) o-Xylene | 11.83 | 106 | 447721 | 5.081 | ug/L | 98 |
| 55) Styrene | 11.84 | 104 | 704048 | 5.191 | ug/L | 98 |
| 56) Isopropylbenzene | 12.13 | 105 | 1274785 | 5.209 | ug/L | 98 |
| 58) 1,1,2,2-Tetrachloroethane | 12.39 | 83 | 92734 | 4.717 | ug/L | 94 |
| 59) 1,2,3-Trichloropropane | 12.43 | 75 | 70194 | 4.864 | ug/L | 100 |
| 61) Bromoform | 12.01 | 173 | 36742 | 4.823 | ug/L | 97 |
| 62) 1,3-Dichlorobenzene | 13.16 | 146 | 355925 | 4.889 | ug/L | 97 |
| 63) 1,4-Dichlorobenzene | 13.24 | 146 | 362471 | 4.807 | ug/L | 94 |
| 65) 1,2-Dichlorobenzene | 13.53 | 146 | 284592 | 4.871 | ug/L | 98 |
| 66) 1,2-Dibromo-3-chloropropan | 14.15 | 75 | 10190 | 4.280 | ug/L # | 93 |
| 67) 1,3,5-Trichlorobenzene | 14.29 | 180 | 210182 | 4.738 | ug/L | 98 |
| 68) 1,2,4-trichlorobenzene | 14.79 | 180 | 126121 | 4.871 | ug/L | 99 |
| 69) Naphthalene | 15.00 | 128 | 126510 | 5.032 | ug/L | 99 |
| 70) 1,2,3-Trichlorobenzene | 15.18 | 180 | 87653 | 4.874 | ug/L | 98 |

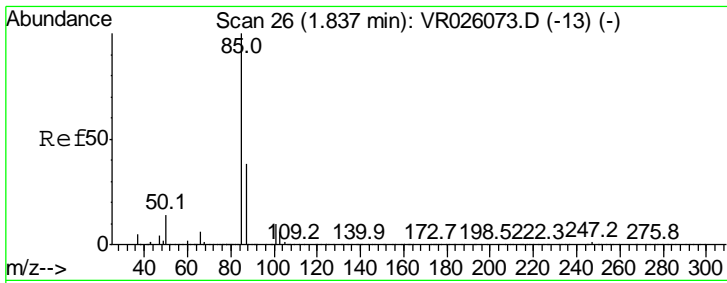
(#) = qualifier out of range (m) = manual integration (+) = signals summed

Data Path : Z:\VOASRV\HPCHEM1\MSVOA R\DATA\VR101518\
 Data File : VR026078.D
 Acq On : 15 Oct 2018 17:53
 Operator : SY/MD
 Sample : VSTDCCC005
 Misc : 25mL/MSVOA R/WATER
 ALS Vial : 10 Sample Multiplier: 1

Instrument :
 MSVOA_R
 Client Sampled :

Quant Time: Oct 16 08:18:46 2018
 Quant Method : Z:\VOASRV\HPCHEM1\MSVOA_R\METHODS\SOMRTR101518WMA.M
 Quant Title : TRACE VOA SOM01.0
 QLast Update : Mon Oct 15 17:34:12 2018
 Response via : Initial Calibration

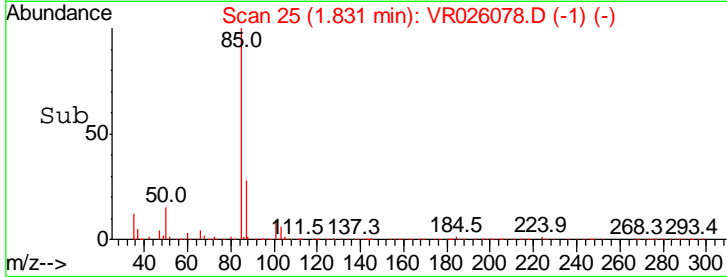
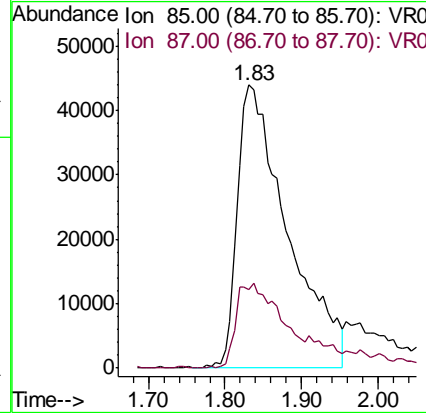
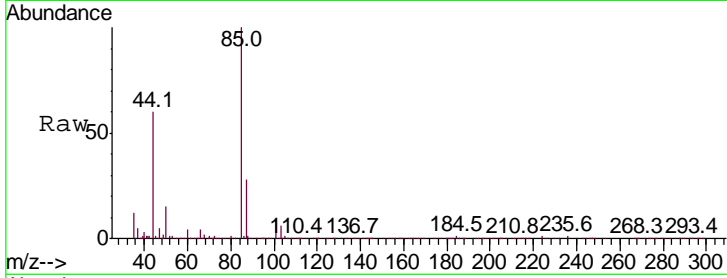




#2
 Dichlorodifluoromethane
 Concen: 4.385 ug/L
 RT: 1.83 min Scan# 25
 Delta R.T. -0.01 min
 Lab File: VR026078.D
 Acq: 15 Oct 2018 17:53

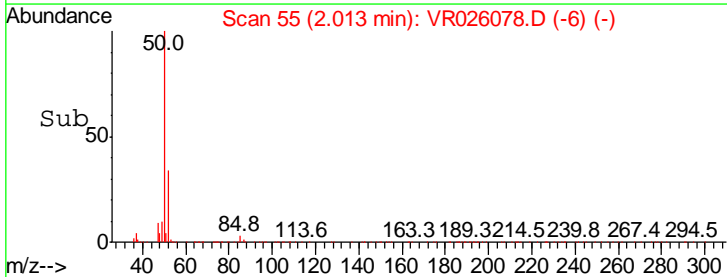
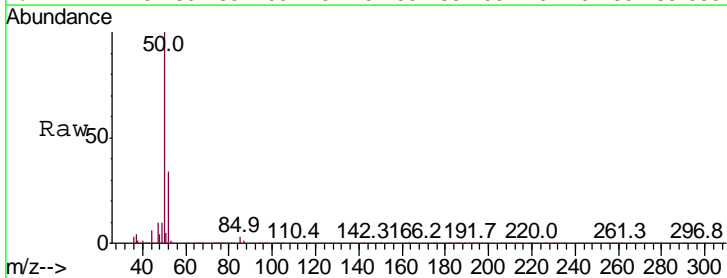
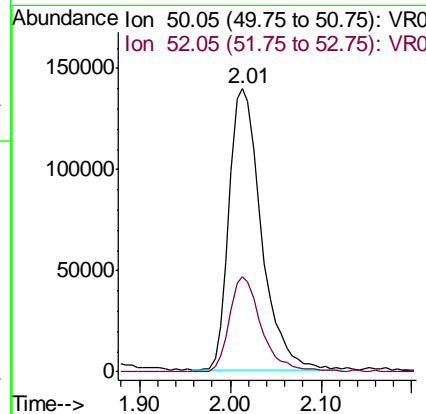
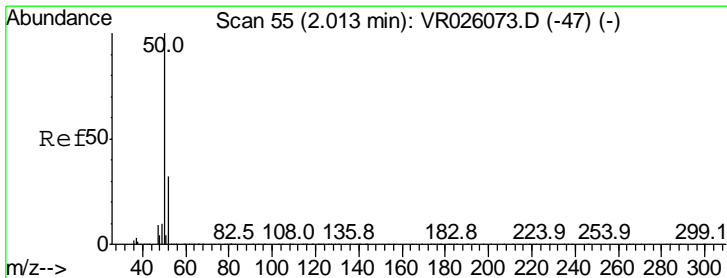
Instrument :
 MSVOA_R
 ClientSampled :

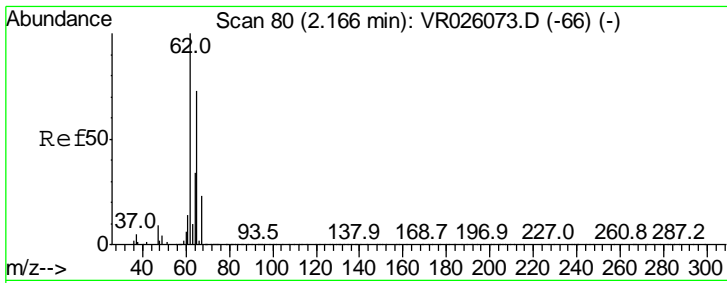
Tgt Ion: 85 Resp: 200077
 Ion Ratio Lower Upper
 85 100
 87 27.1 23.4 35.2



#3
 Chloromethane
 Concen: 4.713 ug/L
 RT: 2.01 min Scan# 55
 Delta R.T. 0.00 min
 Lab File: VR026078.D
 Acq: 15 Oct 2018 17:53

Tgt Ion: 50 Resp: 341488
 Ion Ratio Lower Upper
 50 100
 52 33.8 22.0 40.8

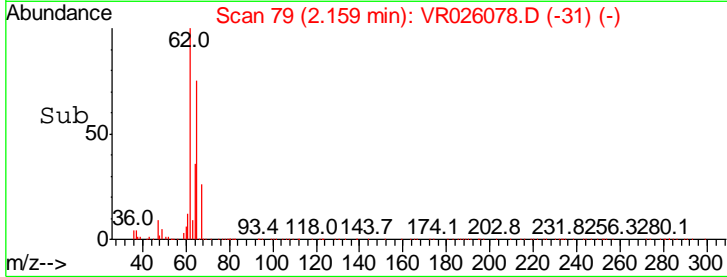
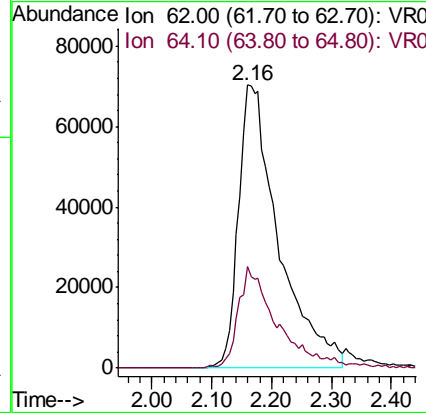
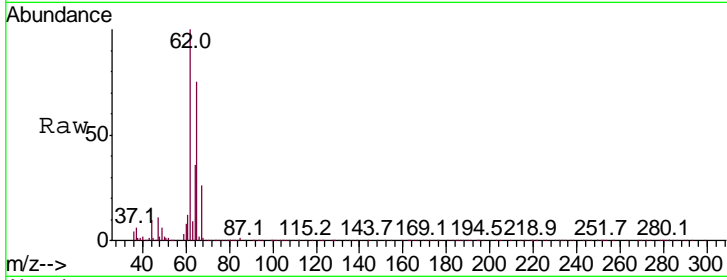




#5
 Vinyl chloride
 Concen: 4.531 ug/L
 RT: 2.16 min Scan# 79
 Delta R.T. -0.01 min
 Lab File: VR026078.D
 Acq: 15 Oct 2018 17:53

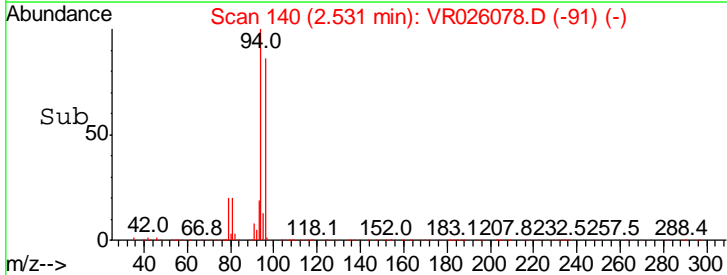
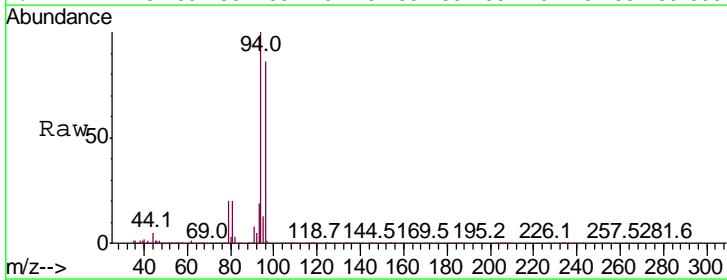
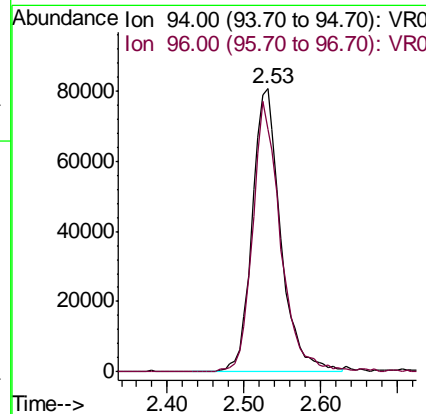
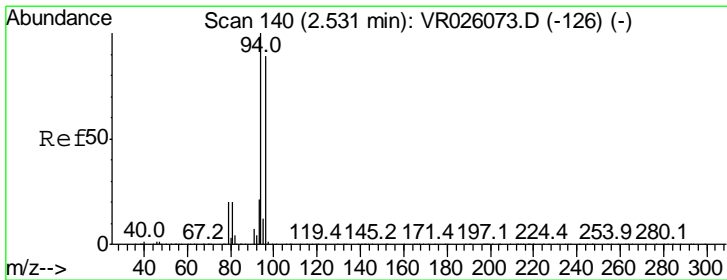
Instrument : MSVOA_R
 ClientSampled :

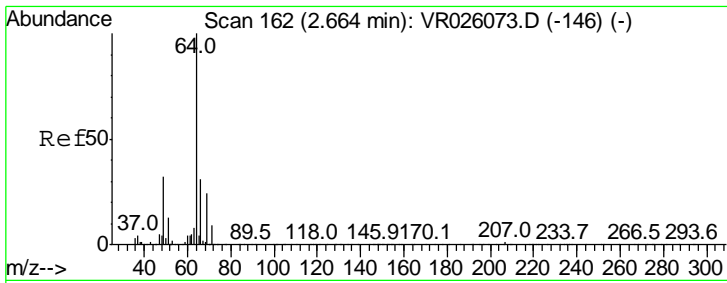
| Tgt Ion | Resp | Lower | Upper |
|---------|------|-------|-------|
| 62 | 100 | | |
| 64 | 35.8 | 23.9 | 44.3 |



#6
 Bromomethane
 Concen: 4.400 ug/L
 RT: 2.53 min Scan# 140
 Delta R.T. 0.00 min
 Lab File: VR026078.D
 Acq: 15 Oct 2018 17:53

| Tgt Ion | Resp | Lower | Upper |
|---------|------|-------|-------|
| 94 | 100 | | |
| 96 | 85.7 | 62.5 | 116.1 |

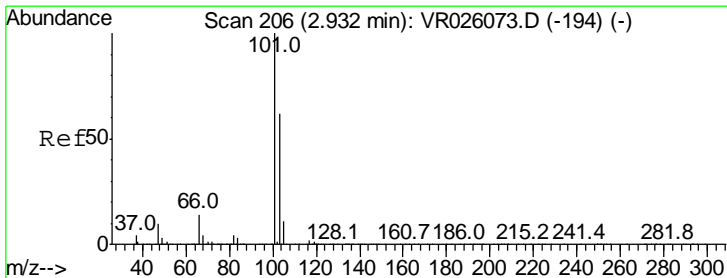
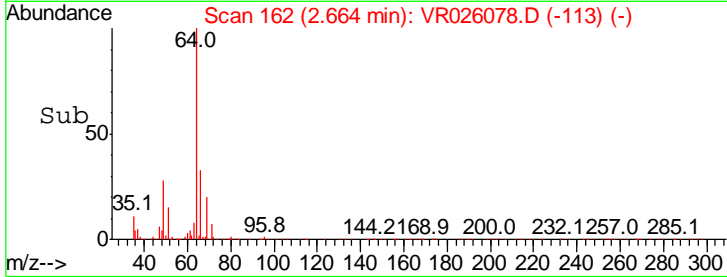
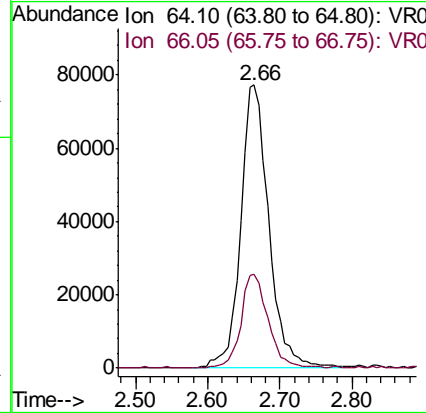
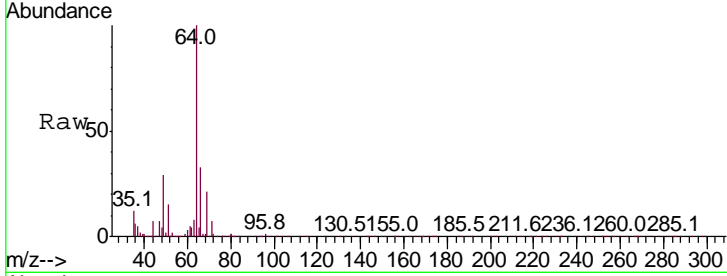




#8
 Chloroethane
 Concen: 4.647 ug/L
 RT: 2.66 min Scan# 162
 Delta R.T. 0.00 min
 Lab File: VR026078.D
 Acq: 15 Oct 2018 17:53

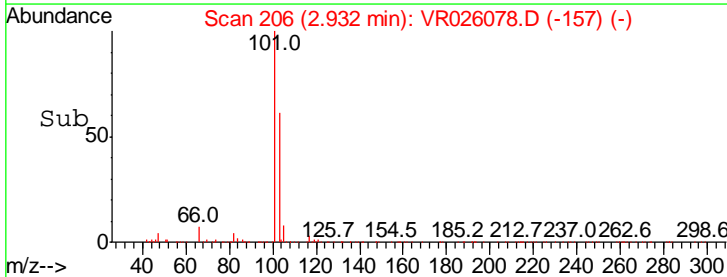
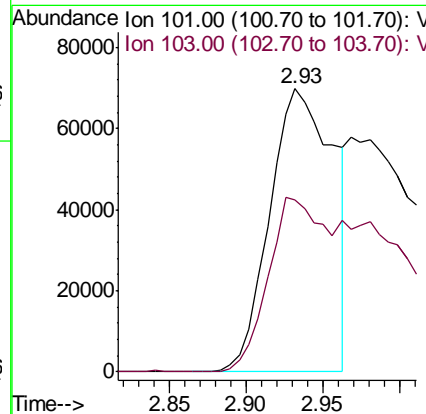
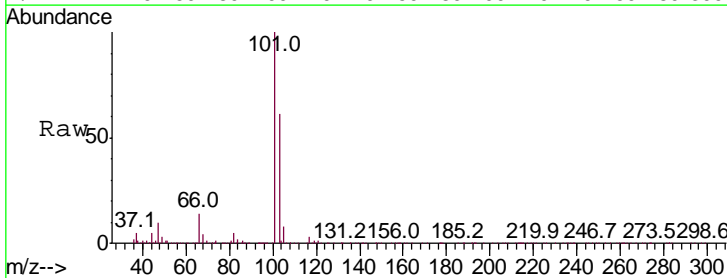
Instrument :
 MSVOA_R
 ClientSampled :

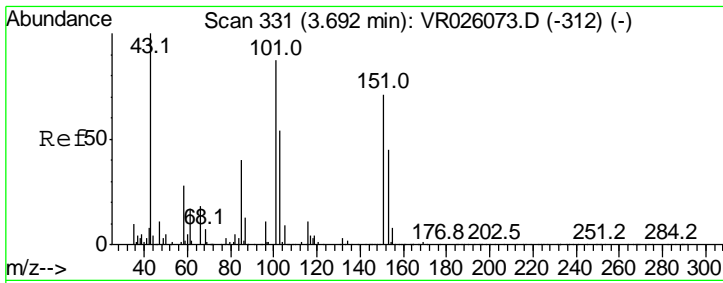
Tgt Ion: 64 Resp: 207839
 Ion Ratio Lower Upper
 64 100
 66 33.0 22.0 40.8



#9
 Trichlorofluoromethane
 Concen: 1.946 ug/L
 RT: 2.93 min Scan# 206
 Delta R.T. 0.00 min
 Lab File: VR026078.D
 Acq: 15 Oct 2018 17:53

Tgt Ion: 101 Resp: 202815
 Ion Ratio Lower Upper
 101 100
 103 56.2 26.0 39.0#

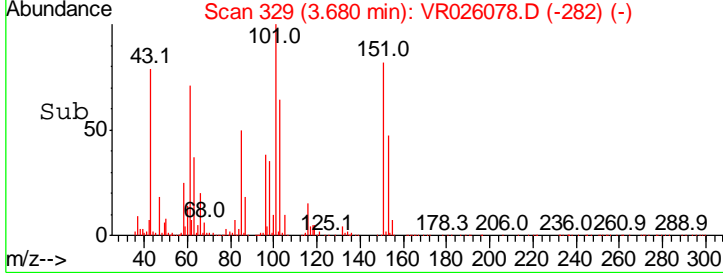
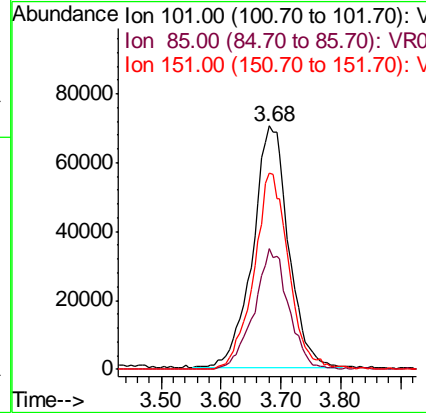
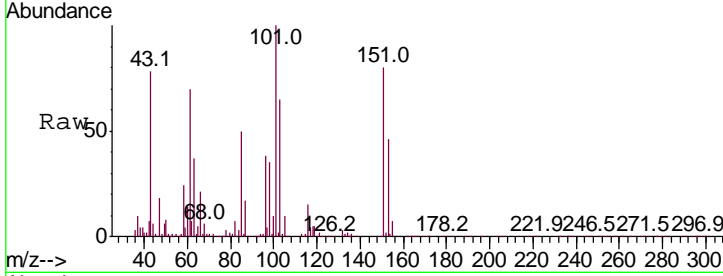




#10
 1,1,2-Trichloro-1,2,2-trifluoroethane
 Concen: 4.689 ug/L
 RT: 3.68 min Scan# 329
 Delta R.T. -0.01 min
 Lab File: VR026078.D
 Acq: 15 Oct 2018 17:53

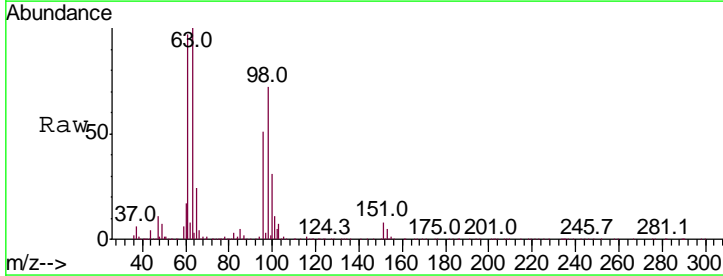
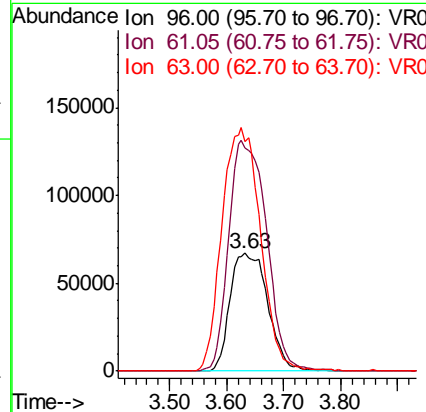
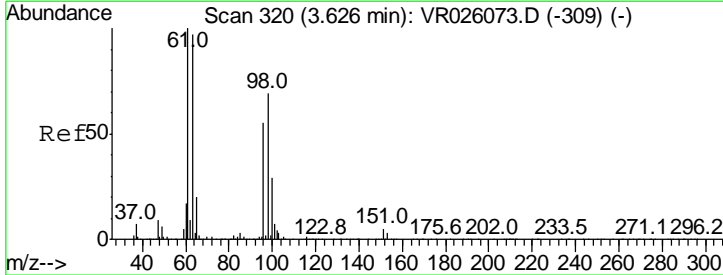
Instrument :
 MSVOA_R
 ClientSampled :

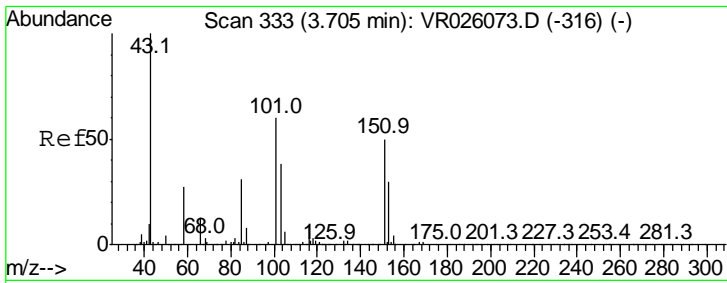
| Tgt Ion | Resp | Lower | Upper |
|---------|------|-------|-------|
| 101 | 100 | | |
| 85 | 48.1 | 37.8 | 56.8 |
| 151 | 79.3 | 63.2 | 94.8 |



#12
 1,1-Dichloroethene
 Concen: 4.704 ug/L
 RT: 3.63 min Scan# 321
 Delta R.T. 0.01 min
 Lab File: VR026078.D
 Acq: 15 Oct 2018 17:53

| Tgt Ion | Resp | Lower | Upper |
|---------|-------|-------|-------|
| 96 | 100 | | |
| 61 | 188.9 | 126.7 | 235.3 |
| 63 | 194.7 | 125.0 | 232.2 |

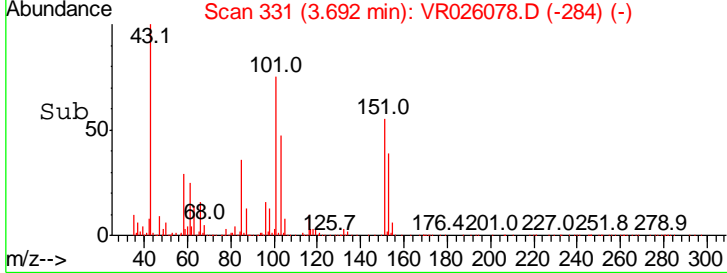
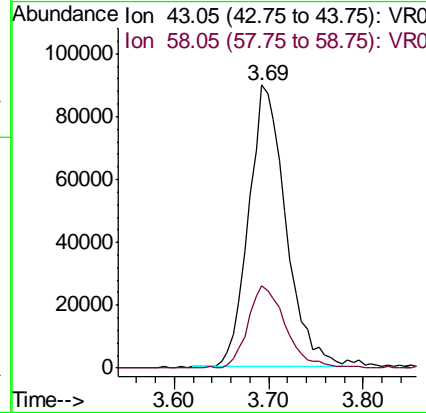
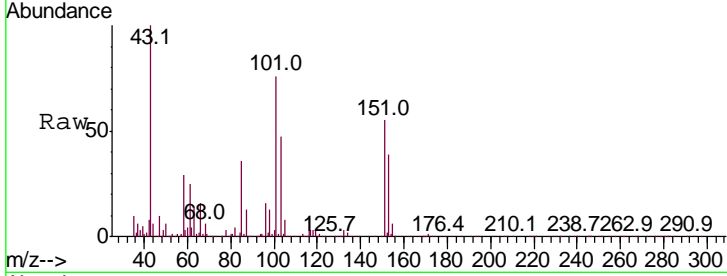




#13
 Acetone
 Concen: 48.780 ug/L
 RT: 3.69 min Scan# 331
 Delta R.T. -0.01 min
 Lab File: VR026078.D
 Acq: 15 Oct 2018 17:53

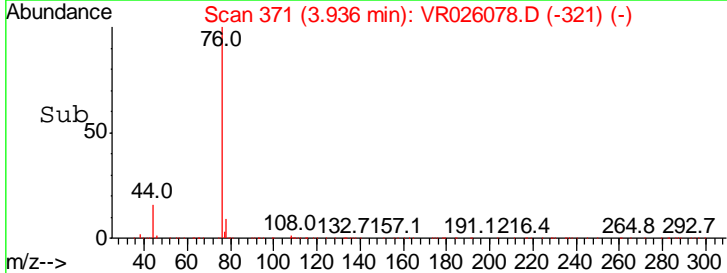
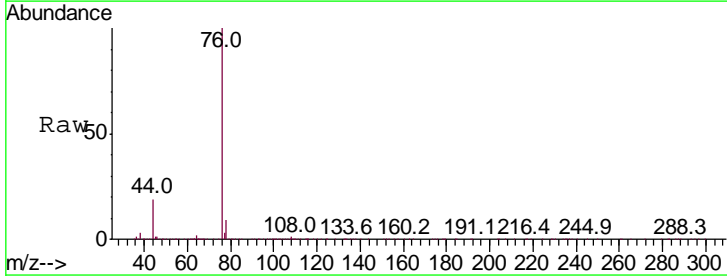
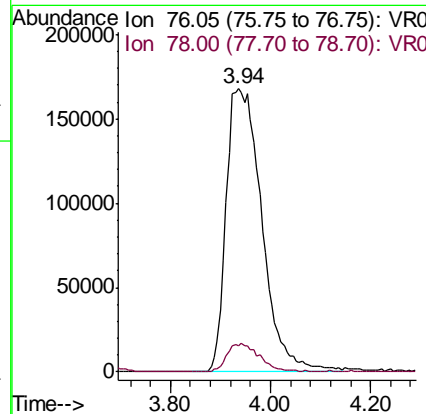
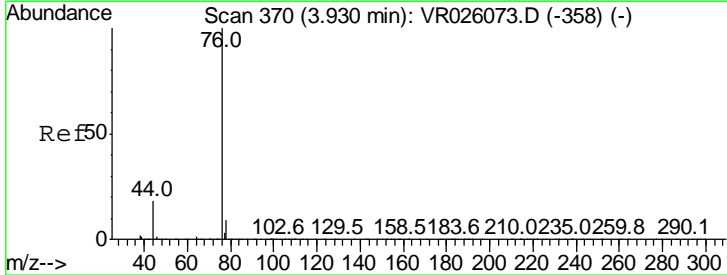
Instrument :
 MSVOA_R
 ClientSampled :

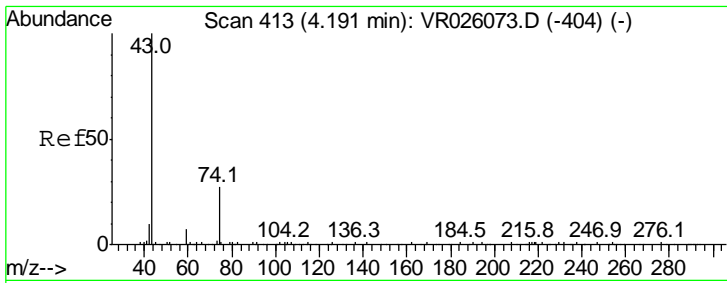
Tgt Ion: 43 Resp: 246102
 Ion Ratio Lower Upper
 43 100
 58 29.7 0.0 55.4



#14
 Carbon disulfide
 Concen: 4.817 ug/L
 RT: 3.94 min Scan# 371
 Delta R.T. 0.01 min
 Lab File: VR026078.D
 Acq: 15 Oct 2018 17:53

Tgt Ion: 76 Resp: 831828
 Ion Ratio Lower Upper
 76 100
 78 9.3 7.6 11.4

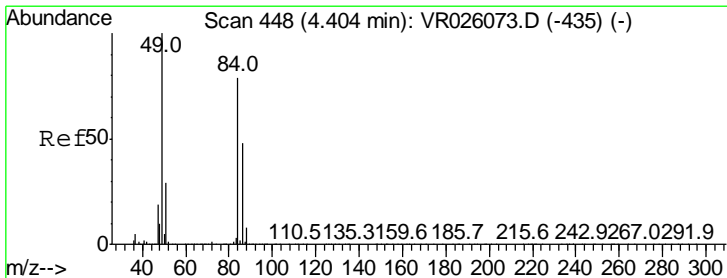
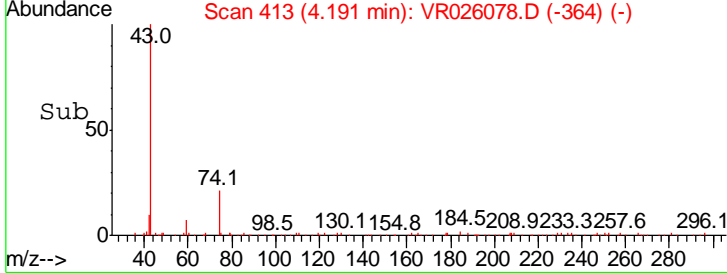
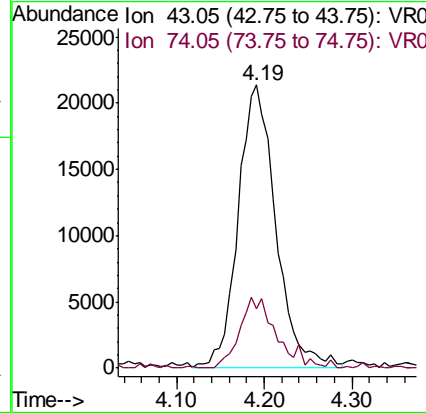
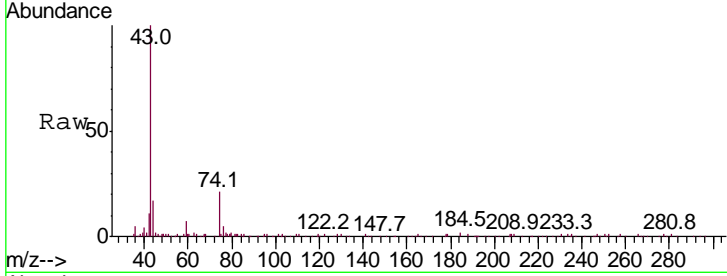




#15
 Methyl Acetate
 Concen: 4.861 ug/L
 RT: 4.19 min Scan# 413
 Delta R.T. 0.00 min
 Lab File: VR026078.D
 Acq: 15 Oct 2018 17:53

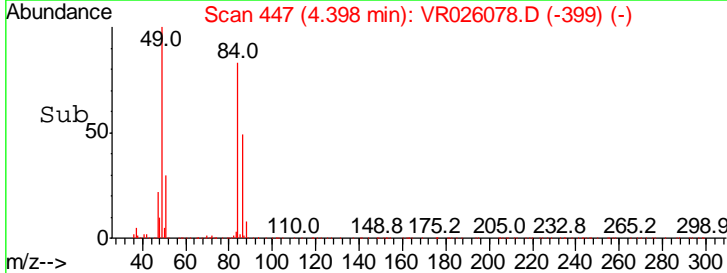
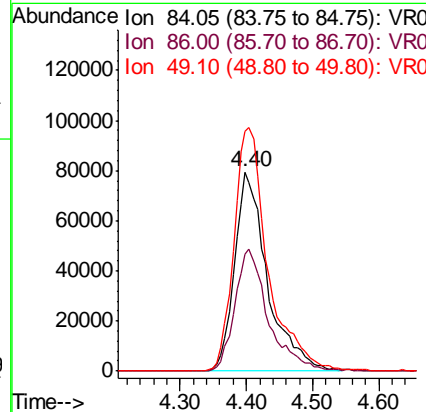
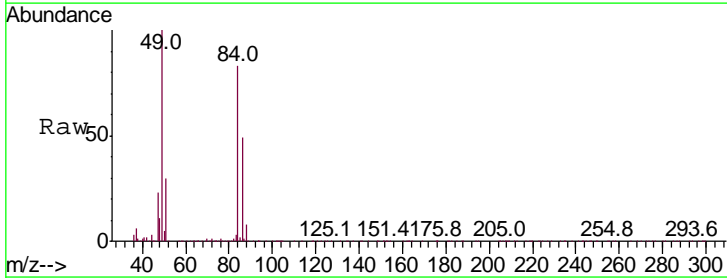
Instrument :
 MSVOA_R
 ClientSampled :

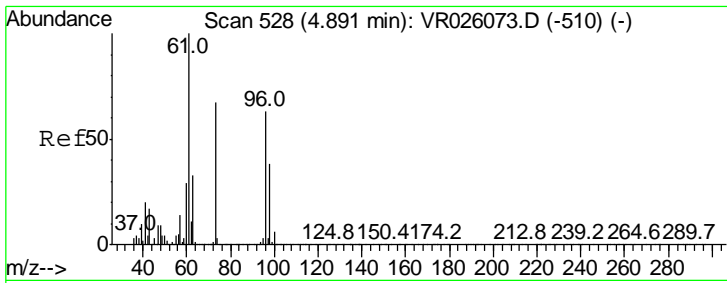
| Tgt Ion | Ratio | Lower | Upper |
|---------|-------|-------|-------|
| 43 | 100 | | |
| 74 | 24.2 | 19.8 | 29.8 |



#16
 Methylene chloride
 Concen: 4.570 ug/L
 RT: 4.40 min Scan# 447
 Delta R.T. -0.01 min
 Lab File: VR026078.D
 Acq: 15 Oct 2018 17:53

| Tgt Ion | Ratio | Lower | Upper |
|---------|-------|-------|-------|
| 84 | 100 | | |
| 86 | 58.6 | 43.0 | 79.8 |
| 49 | 120.5 | 89.1 | 165.5 |

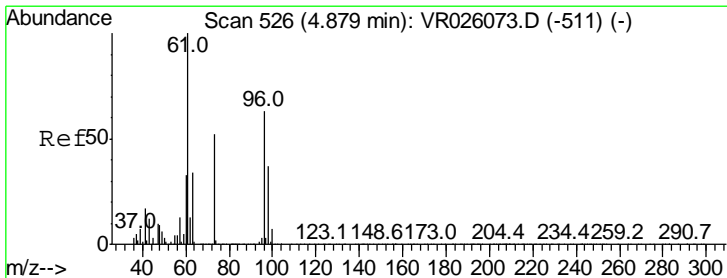
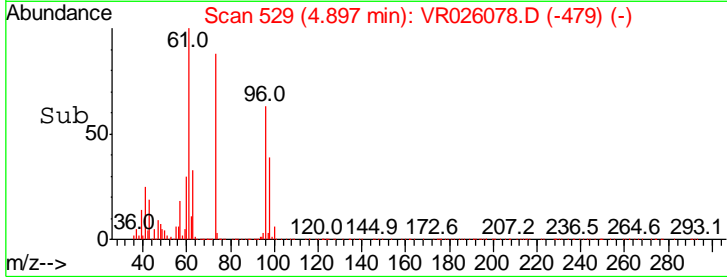
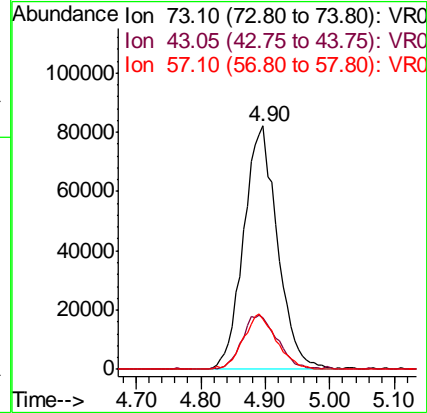
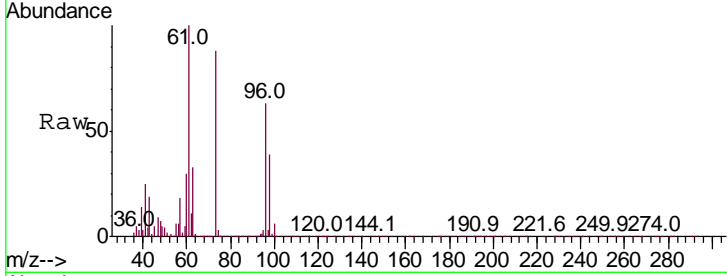




#17
 Methyl tert-butyl Ether
 Concen: 4.938 ug/L
 RT: 4.90 min Scan# 529
 Delta R.T. 0.01 min
 Lab File: VR026078.D
 Acq: 15 Oct 2018 17:53

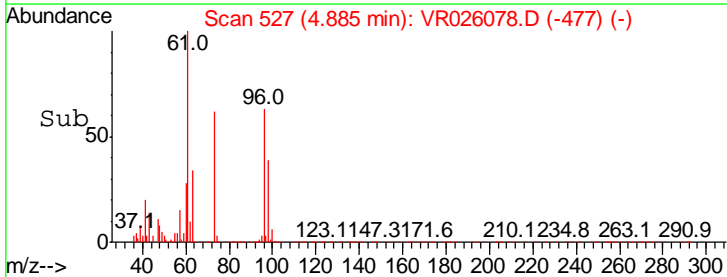
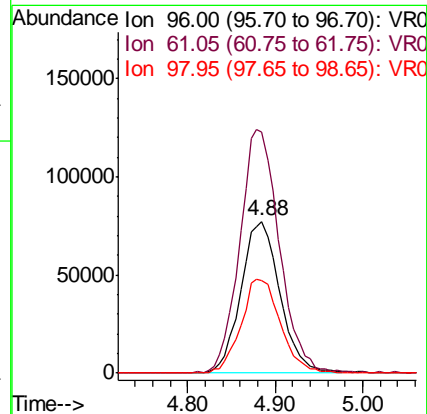
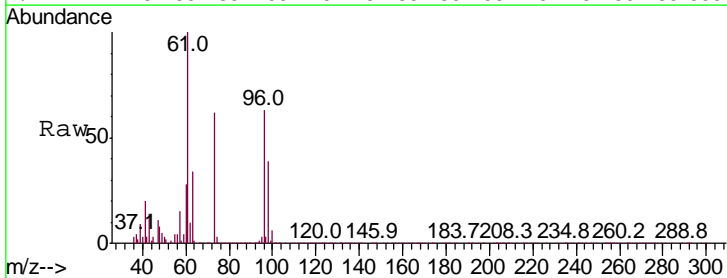
Instrument :
 MSVOA_R
 ClientSampled :

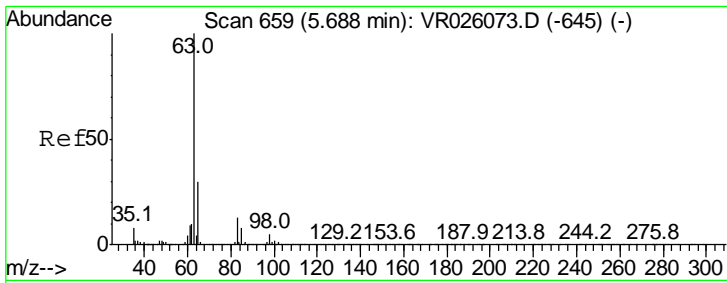
| Tgt Ion | Resp | Lower | Upper |
|---------|------|-------|-------|
| 73 | 100 | | |
| 43 | 23.4 | 20.1 | 30.1 |
| 57 | 22.3 | 19.0 | 28.4 |



#18
 trans-1,2-Dichloroethene
 Concen: 4.775 ug/L
 RT: 4.88 min Scan# 527
 Delta R.T. 0.01 min
 Lab File: VR026078.D
 Acq: 15 Oct 2018 17:53

| Tgt Ion | Resp | Lower | Upper |
|---------|-------|-------|-------|
| 96 | 100 | | |
| 61 | 158.7 | 111.4 | 206.8 |
| 98 | 61.4 | 41.4 | 77.0 |

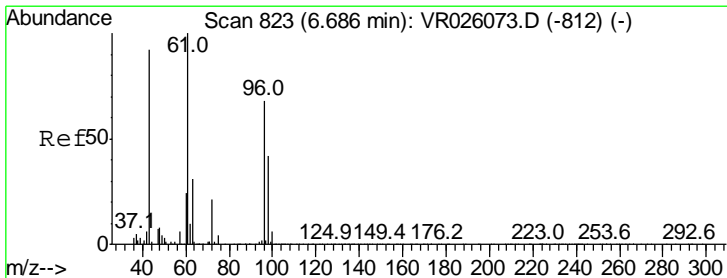
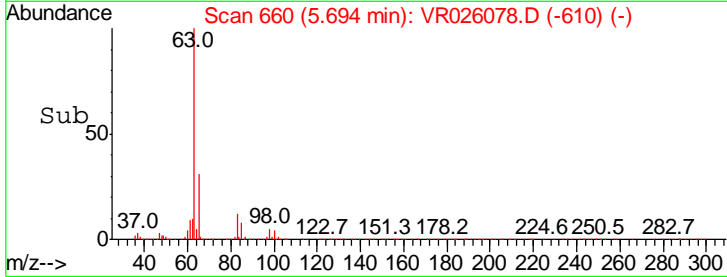
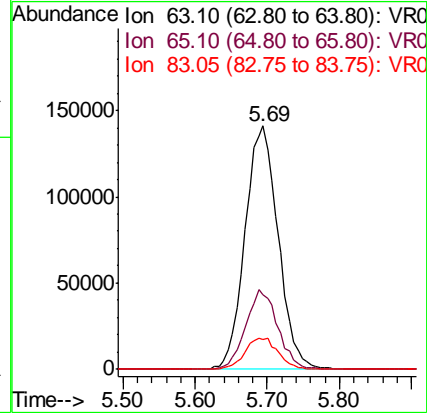
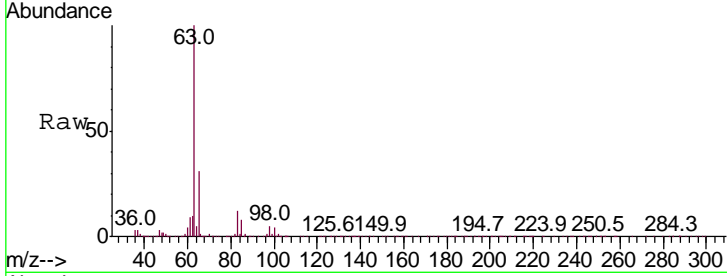




#19
 1,1-Dichloroethane
 Concen: 4.793 ug/L
 RT: 5.69 min Scan# 660
 Delta R.T. 0.01 min
 Lab File: VR026078.D
 Acq: 15 Oct 2018 17:53

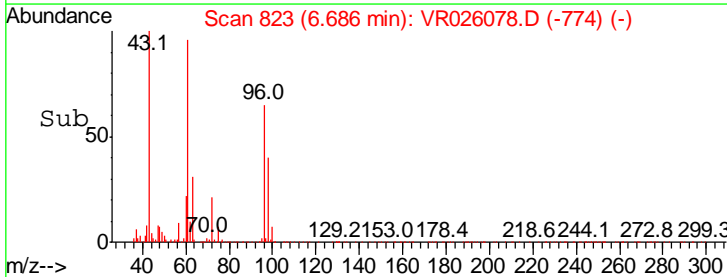
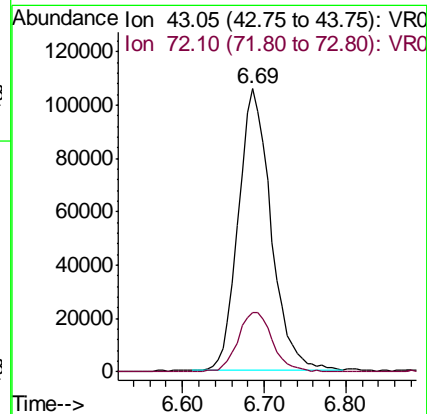
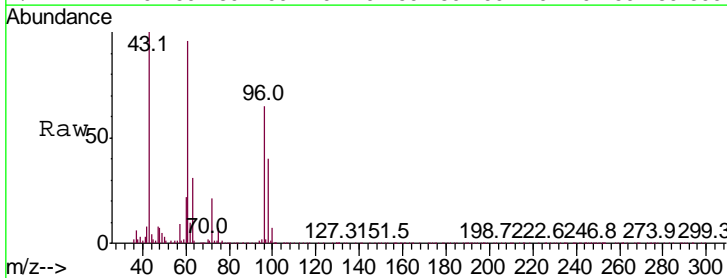
Instrument : MSVOA_R
 ClientSampled :

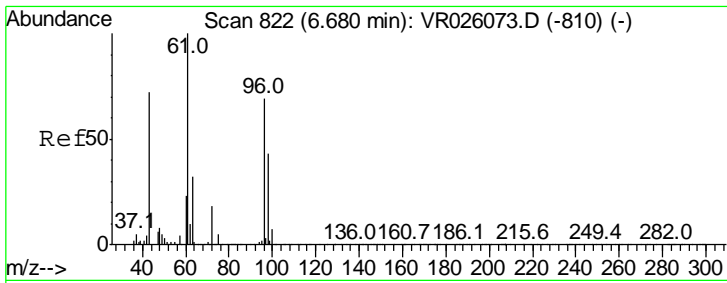
| Tgt Ion | Resp | Lower | Upper |
|---------|--------|-------|-------|
| 63 | 449514 | | |
| 65 | 30.7 | 21.2 | 39.4 |
| 83 | 12.5 | 9.2 | 17.2 |



#21
 2-Butanone
 Concen: 50.175 ug/L
 RT: 6.69 min Scan# 823
 Delta R.T. 0.00 min
 Lab File: VR026078.D
 Acq: 15 Oct 2018 17:53

| Tgt Ion | Resp | Lower | Upper |
|---------|--------|-------|-------|
| 43 | 292026 | | |
| 43 | 100 | | |
| 72 | 22.8 | 12.3 | 36.8 |

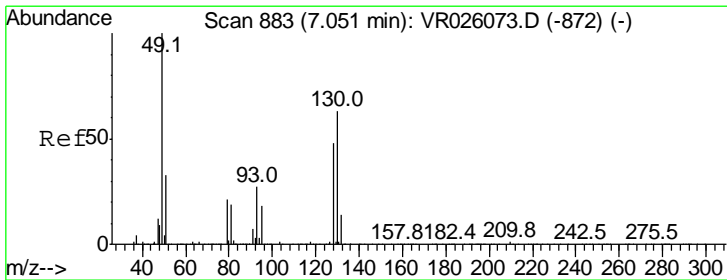
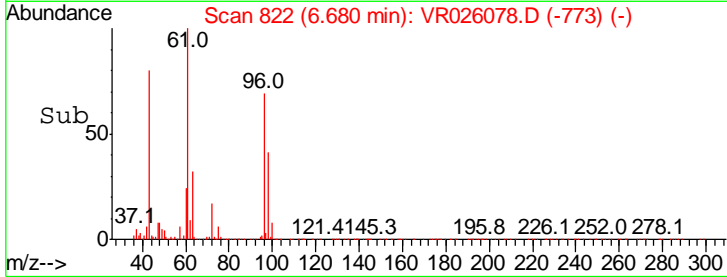
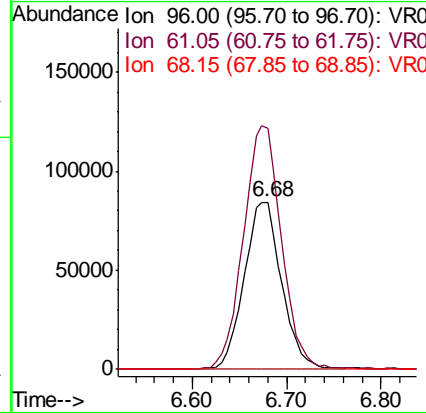
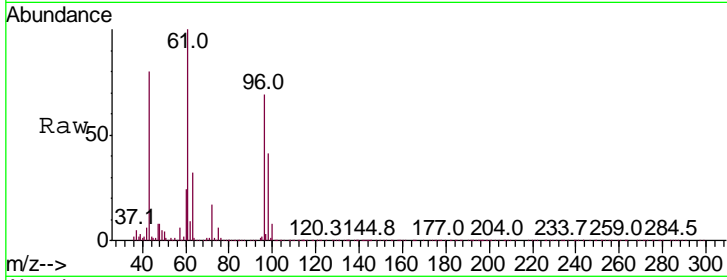




#22
 cis-1,2-Dichloroethene
 Concen: 4.959 ug/L
 RT: 6.68 min Scan# 822
 Delta R.T. 0.00 min
 Lab File: VR026078.D
 Acq: 15 Oct 2018 17:53

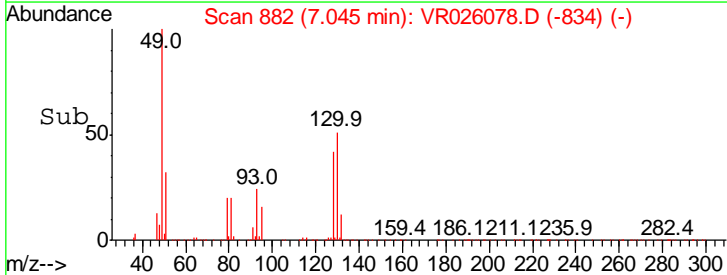
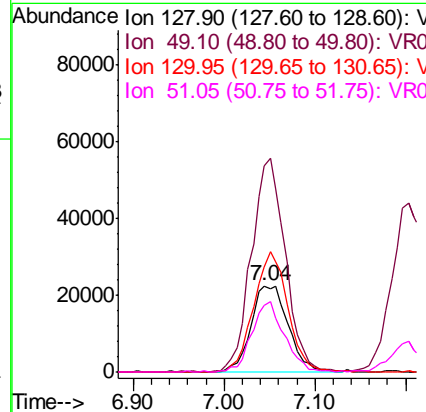
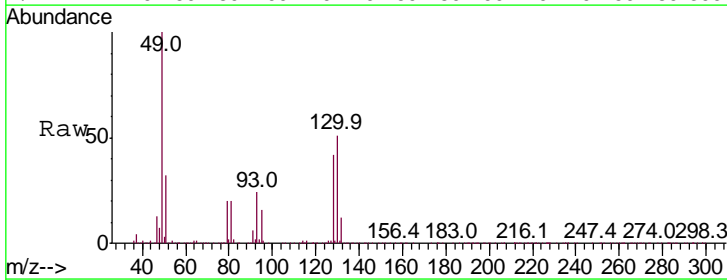
Instrument :
 MSVOA_R
 ClientSampled :

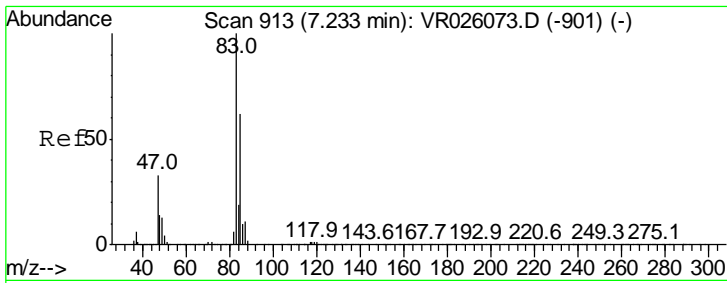
| Tgt Ion | Resp | Lower | Upper |
|---------|--------|-------|-------|
| 96 | 234303 | | |
| 61 | 144.2 | 101.8 | 189.0 |
| 68 | 0.1 | 0.1 | 0.3# |



#23
 Bromochloromethane
 Concen: 4.814 ug/L
 RT: 7.04 min Scan# 882
 Delta R.T. -0.01 min
 Lab File: VR026078.D
 Acq: 15 Oct 2018 17:53

| Tgt Ion | Resp | Lower | Upper |
|---------|-------|-------|-------|
| 128 | 63802 | | |
| 49 | 238.7 | 146.2 | 271.4 |
| 130 | 122.2 | 92.5 | 171.7 |
| 51 | 76.9 | 55.6 | 83.4 |

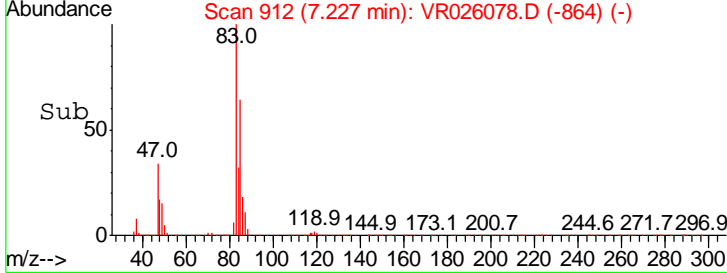
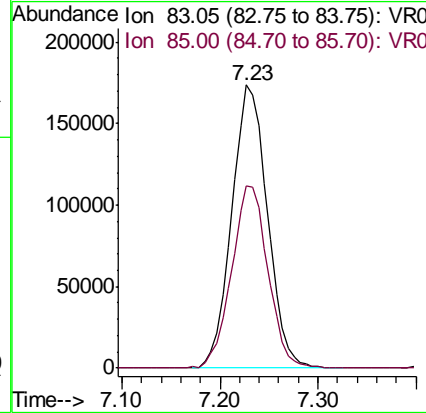
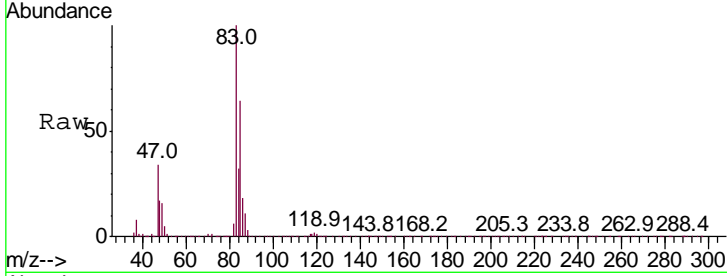




#25
 Chloroform
 Concen: 4.783 ug/L
 RT: 7.23 min Scan# 912
 Delta R.T. -0.01 min
 Lab File: VR026078.D
 Acq: 15 Oct 2018 17:53

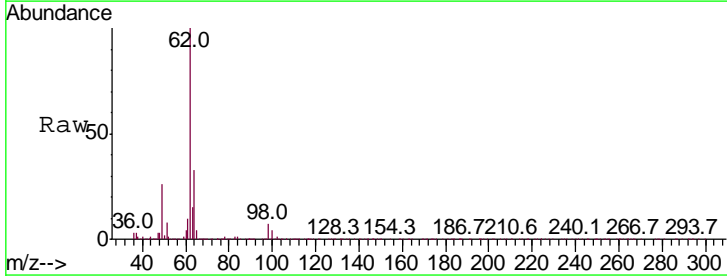
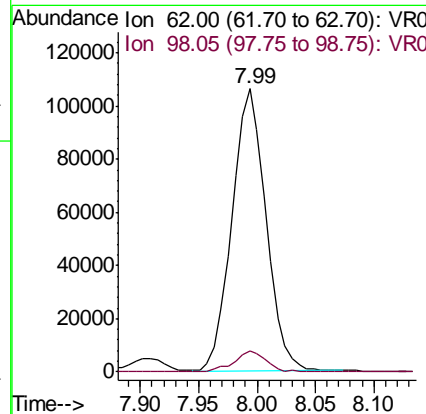
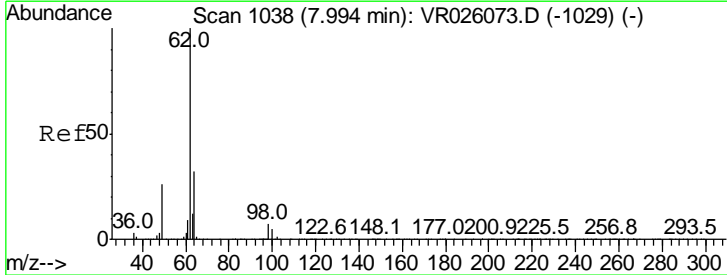
Instrument :
 MSVOA_R
 ClientSampled :

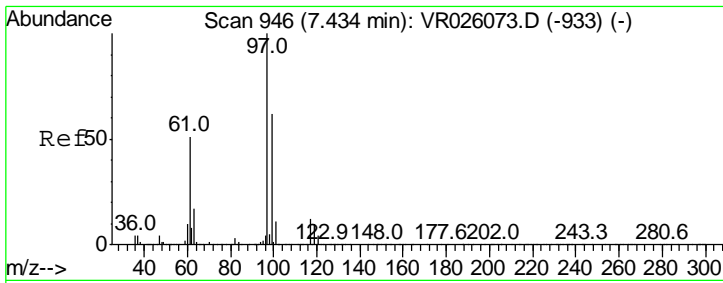
| Tgt Ion | Resp | Lower | Upper |
|---------|------|-------|-------|
| 83 | 100 | | |
| 85 | 64.2 | 43.5 | 80.7 |



#27
 1,2-Dichloroethane
 Concen: 4.809 ug/L
 RT: 7.99 min Scan# 1038
 Delta R.T. 0.00 min
 Lab File: VR026078.D
 Acq: 15 Oct 2018 17:53

| Tgt Ion | Resp | Lower | Upper |
|---------|------|-------|-------|
| 62 | 100 | | |
| 98 | 7.3 | 5.6 | 8.4 |

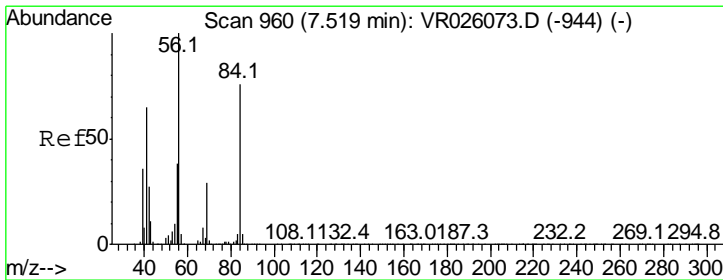
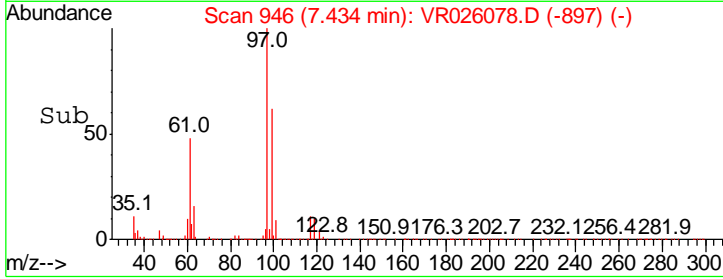
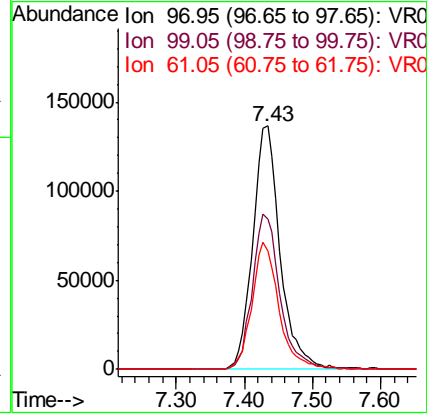
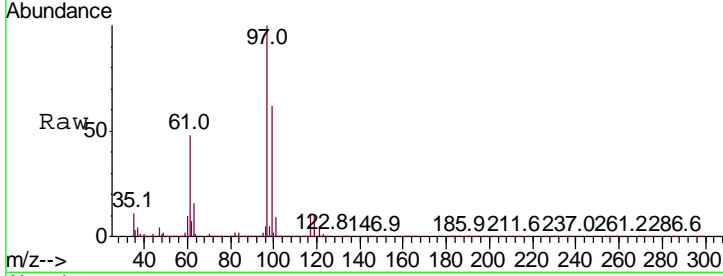




#29
 1,1,1-Trichloroethane
 Concen: 4.844 ug/L
 RT: 7.43 min Scan# 946
 Delta R.T. 0.00 min
 Lab File: VR026078.D
 Acq: 15 Oct 2018 17:53

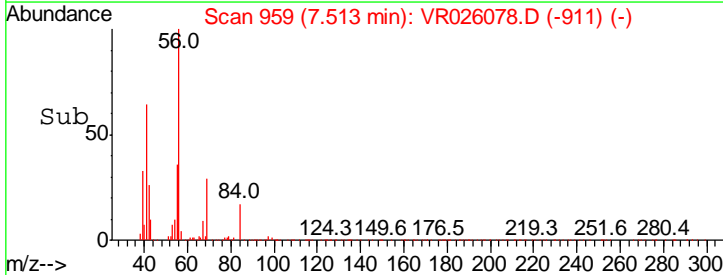
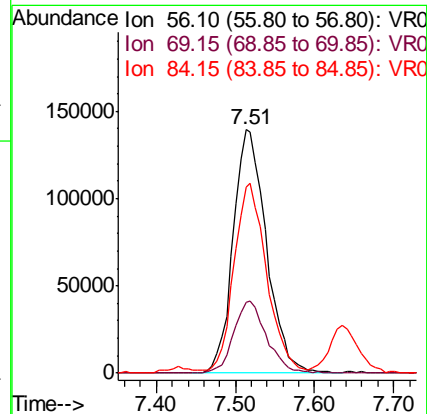
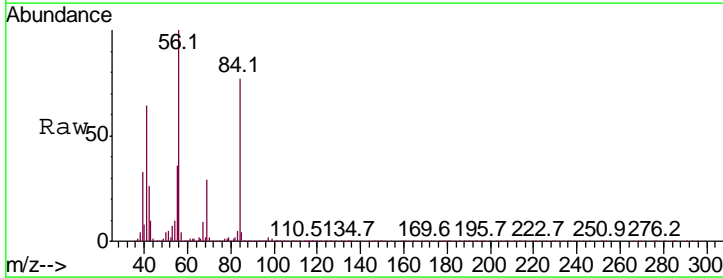
Instrument :
 MSVOA_R
 ClientSampled :

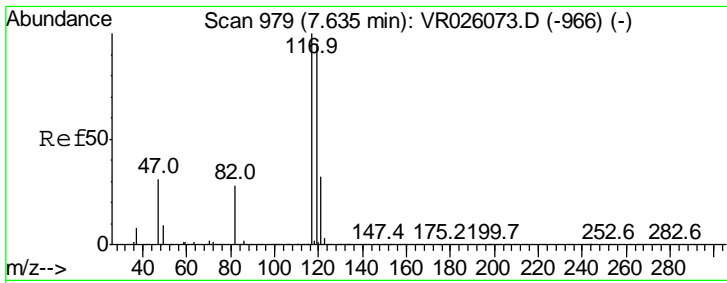
| Tgt Ion | Resp | Lower | Upper |
|---------|------|-------|-------|
| 97 | 100 | | |
| 99 | 63.9 | 51.1 | 76.7 |
| 61 | 51.4 | 42.1 | 63.1 |



#30
 Cyclohexane
 Concen: 5.149 ug/L
 RT: 7.51 min Scan# 959
 Delta R.T. -0.01 min
 Lab File: VR026078.D
 Acq: 15 Oct 2018 17:53

| Tgt Ion | Resp | Lower | Upper |
|---------|------|-------|-------|
| 56 | 100 | | |
| 69 | 29.1 | 23.8 | 35.8 |
| 84 | 76.3 | 62.2 | 93.4 |

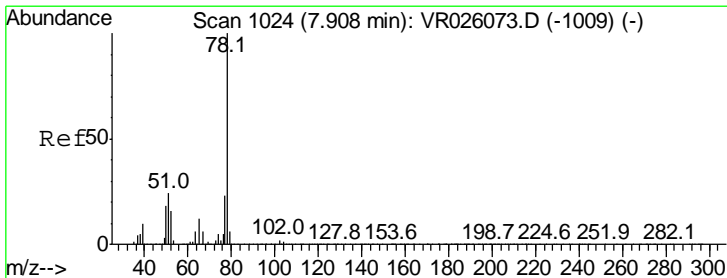
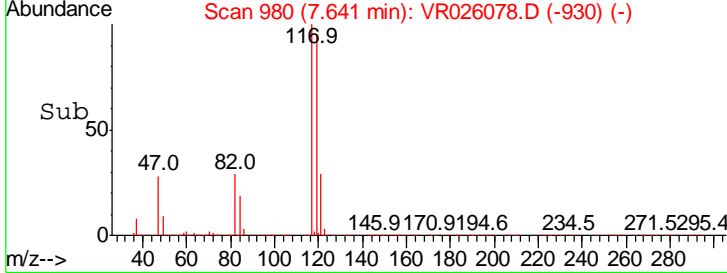
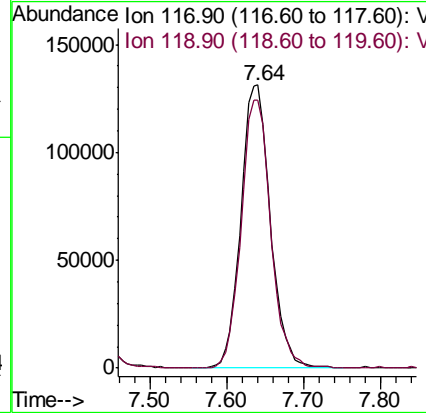
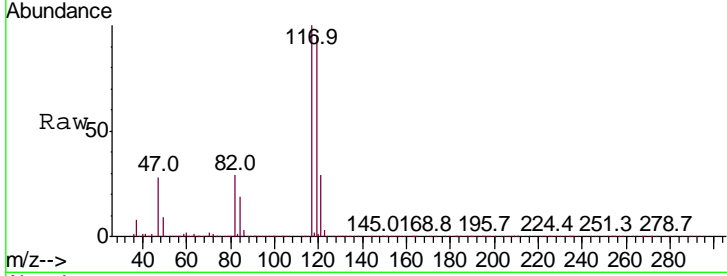




#31
 Carbon tetrachloride
 Concen: 4.846 ug/L
 RT: 7.64 min Scan# 980
 Delta R.T. 0.01 min
 Lab File: VR026078.D
 Acq: 15 Oct 2018 17:53

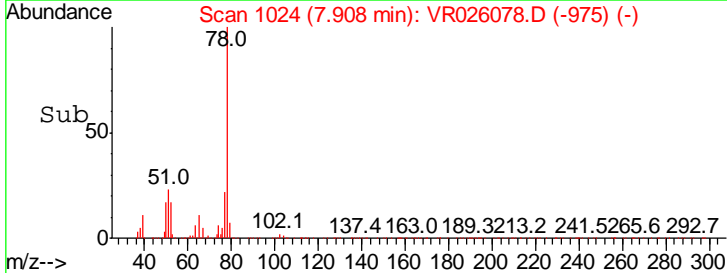
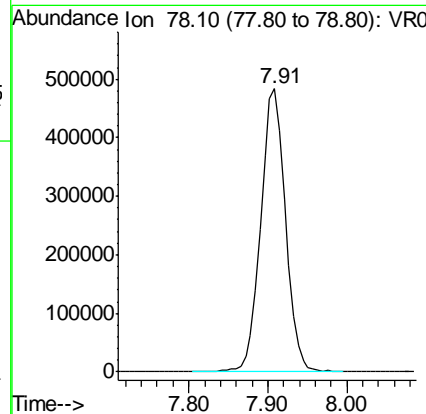
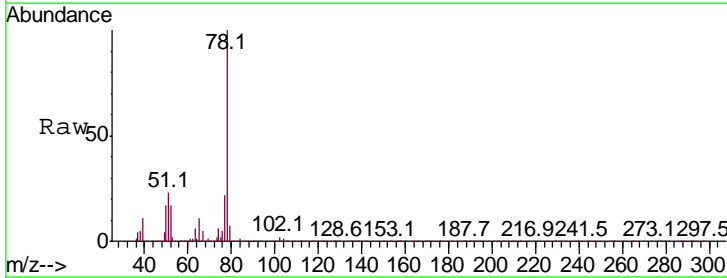
Instrument :
 MSVOA_R
 ClientSampled :

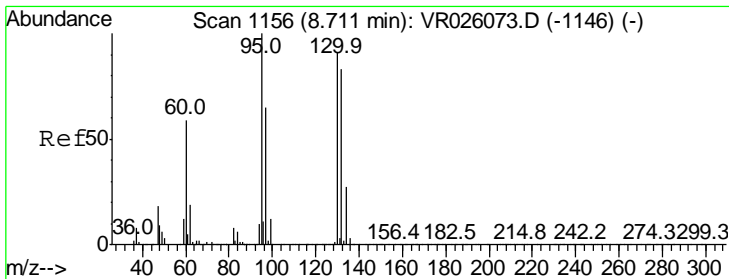
| Tgt Ion | Resp | Lower | Upper |
|---------|------|-------|-------|
| 117 | 100 | | |
| 119 | 95.0 | 74.2 | 111.2 |



#33
 Benzene
 Concen: 4.843 ug/L
 RT: 7.91 min Scan# 1024
 Delta R.T. 0.00 min
 Lab File: VR026078.D
 Acq: 15 Oct 2018 17:53

| Tgt Ion | Resp |
|---------|---------|
| 78 | 1052541 |

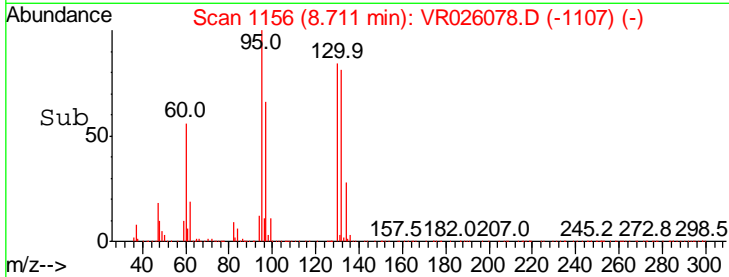
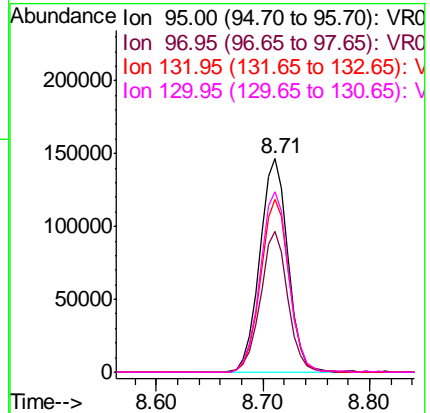
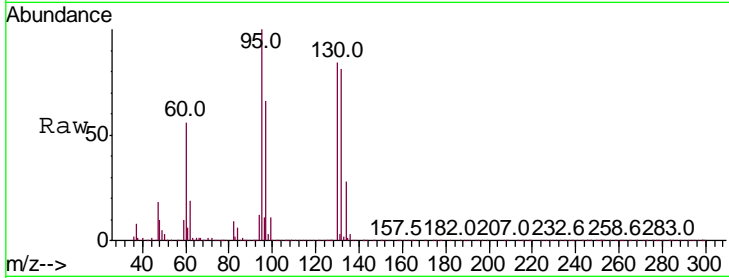




#34
 Trichloroethene
 Concen: 4.865 ug/L
 RT: 8.71 min Scan# 1156
 Delta R.T. 0.00 min
 Lab File: VR026078.D
 Acq: 15 Oct 2018 17:53

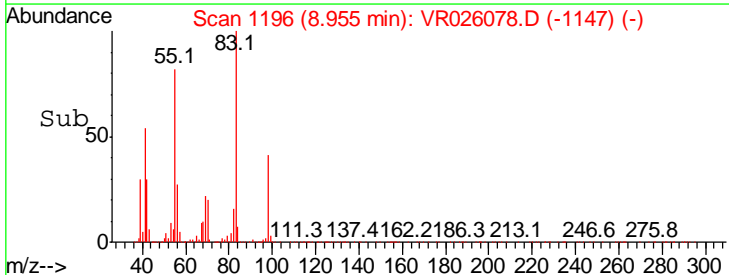
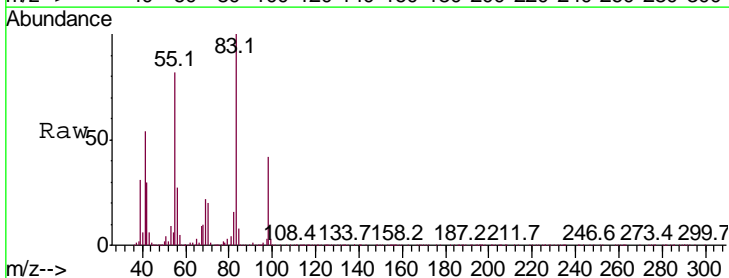
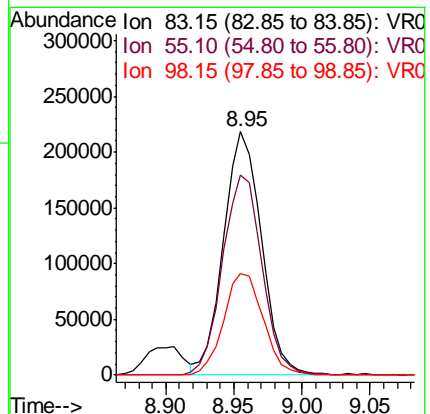
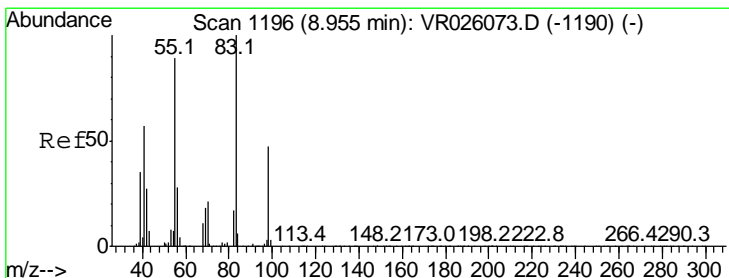
Instrument :
 MSVOA_R
 ClientSampled :

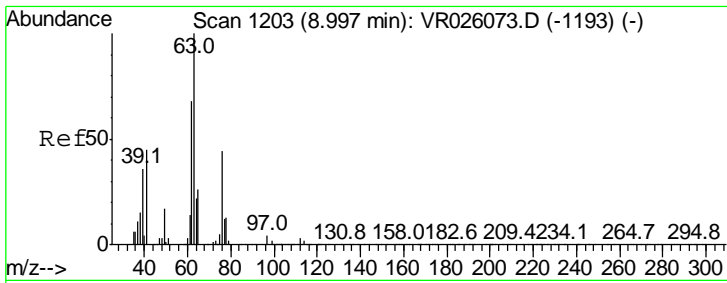
| Tgt Ion | Resp | Lower | Upper |
|---------|------|-------|-------|
| 95 | 100 | | |
| 97 | 66.1 | 45.7 | 84.9 |
| 132 | 80.9 | 58.3 | 108.3 |
| 130 | 84.4 | 64.0 | 119.0 |



#35
 Methylcyclohexane
 Concen: 5.073 ug/L
 RT: 8.95 min Scan# 1196
 Delta R.T. 0.00 min
 Lab File: VR026078.D
 Acq: 15 Oct 2018 17:53

| Tgt Ion | Resp | Lower | Upper |
|---------|------|-------|-------|
| 83 | 100 | | |
| 55 | 86.6 | 66.8 | 100.2 |
| 98 | 44.5 | 35.2 | 52.8 |

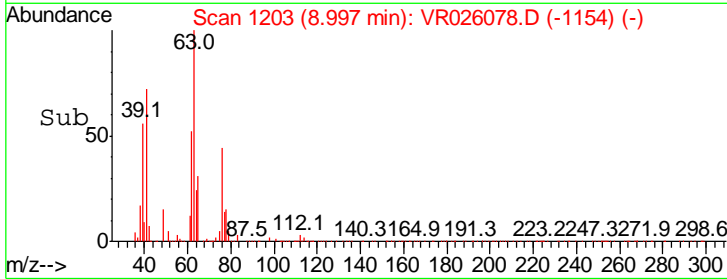
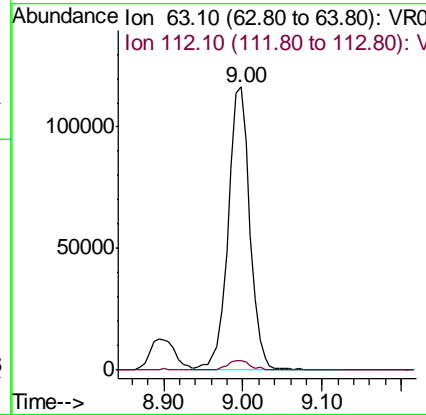
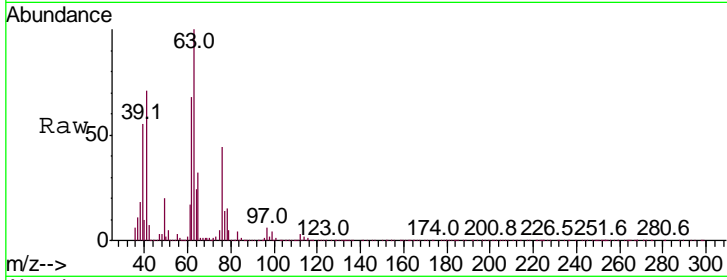




#37
 1,2-Dichloropropane
 Concen: 4.843 ug/L
 RT: 9.00 min Scan# 1203
 Delta R.T. 0.00 min
 Lab File: VR026078.D
 Acq: 15 Oct 2018 17:53

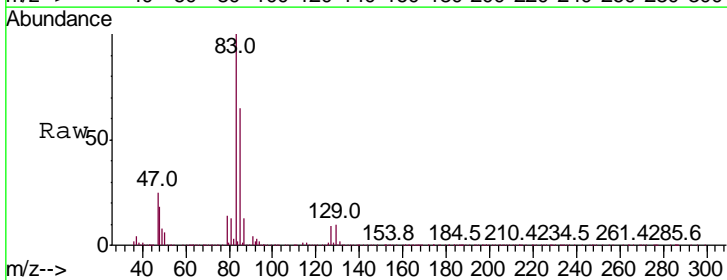
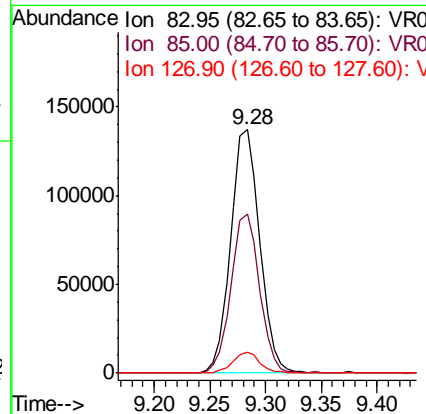
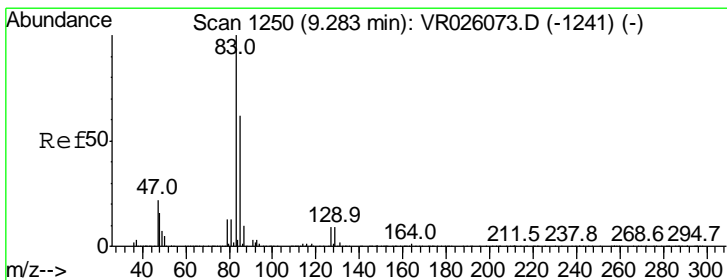
Instrument :
 MSVOA_R
 ClientSampled :

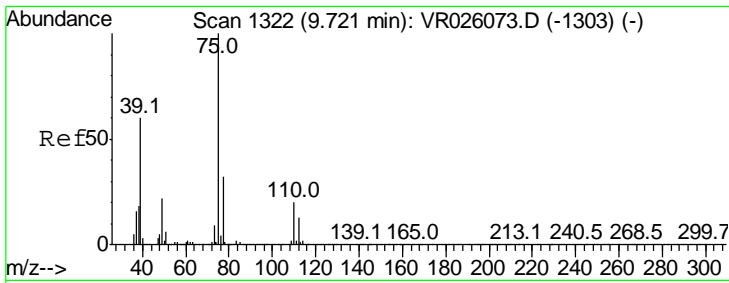
| Tgt Ion | Resp | Lower | Upper |
|---------|------|-------|-------|
| 63 | 100 | | |
| 112 | 3.7 | 2.7 | 4.1 |



#38
 Bromodichloromethane
 Concen: 5.032 ug/L
 RT: 9.28 min Scan# 1250
 Delta R.T. 0.00 min
 Lab File: VR026078.D
 Acq: 15 Oct 2018 17:53

| Tgt Ion | Resp | Lower | Upper |
|---------|------|-------|-------|
| 83 | 100 | | |
| 85 | 65.4 | 43.5 | 80.7 |
| 127 | 8.8 | 7.0 | 10.6 |

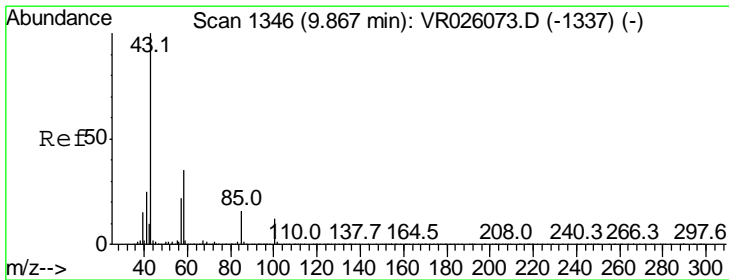
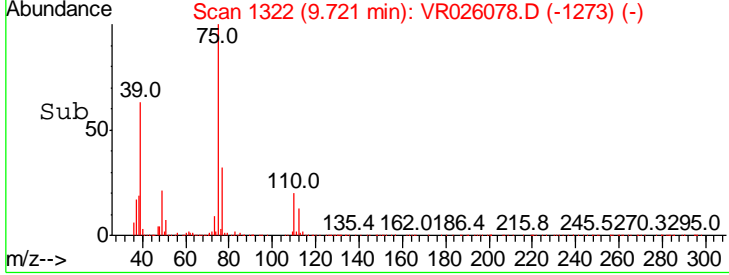
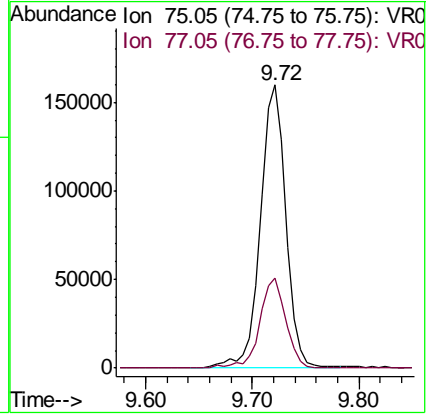
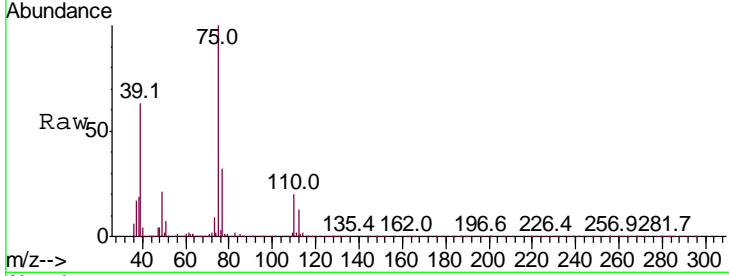




#39
 cis-1,3-Dichloropropene
 Concen: 5.107 ug/L
 RT: 9.72 min Scan# 1322
 Delta R.T. 0.00 min
 Lab File: VR026078.D
 Acq: 15 Oct 2018 17:53

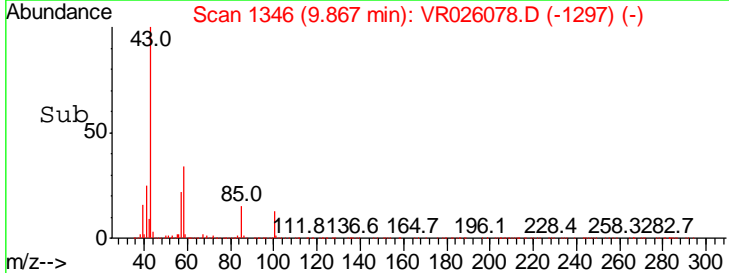
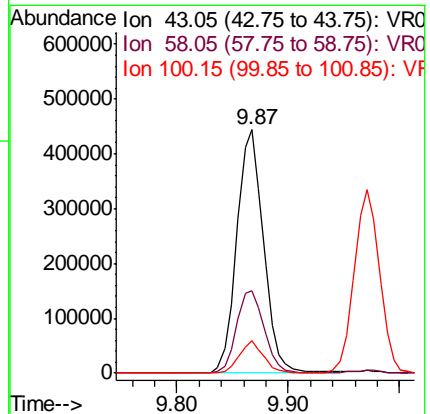
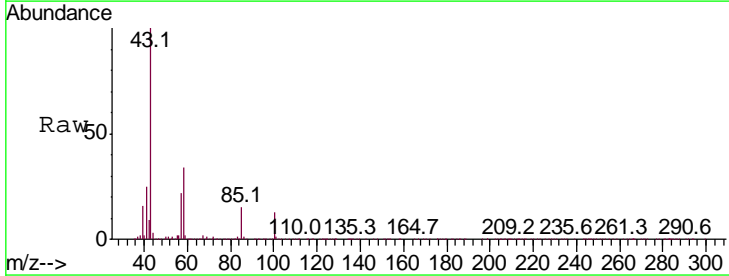
Instrument :
 MSVOA_R
 ClientSampled :

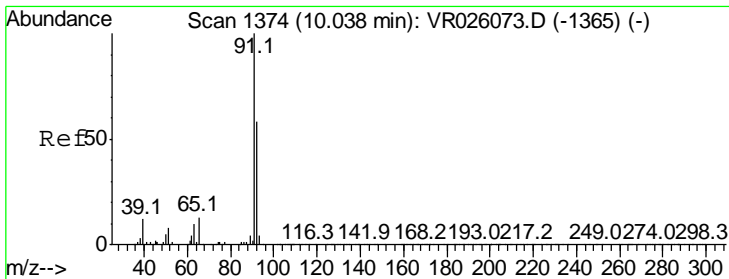
| Tgt Ion | Resp | Lower | Upper |
|---------|------|-------|-------|
| 75 | 100 | | |
| 77 | 31.9 | 22.7 | 42.1 |



#40
 4-Methyl-2-pentanone
 Concen: 52.738 ug/L
 RT: 9.87 min Scan# 1346
 Delta R.T. 0.00 min
 Lab File: VR026078.D
 Acq: 15 Oct 2018 17:53

| Tgt Ion | Resp | Lower | Upper |
|---------|------|-------|-------|
| 43 | 100 | | |
| 58 | 34.7 | 28.1 | 42.1 |
| 100 | 11.9 | 9.3 | 13.9 |

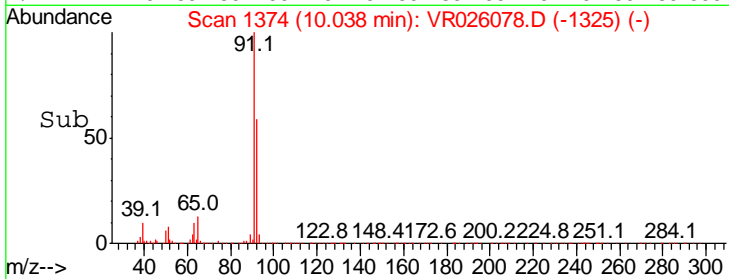
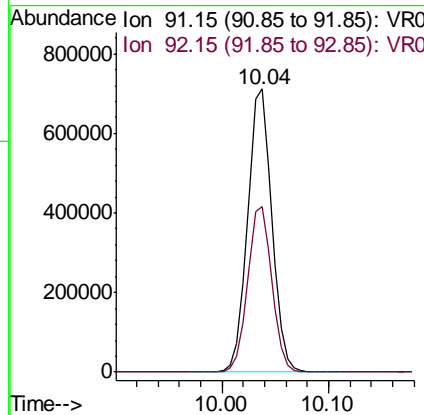
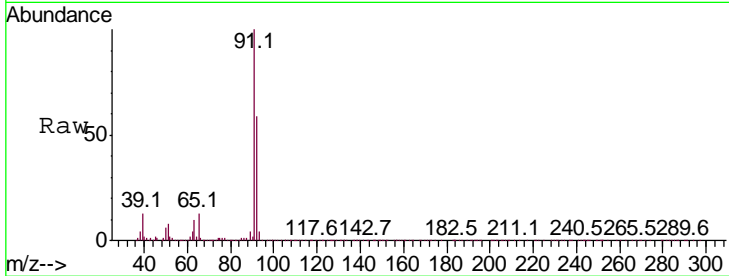




#42
 Toluene
 Concen: 4.966 ug/L
 RT: 10.04 min Scan# 1374
 Delta R.T. 0.00 min
 Lab File: VR026078.D
 Acq: 15 Oct 2018 17:53

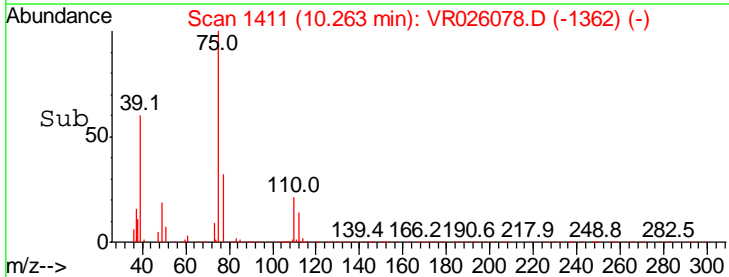
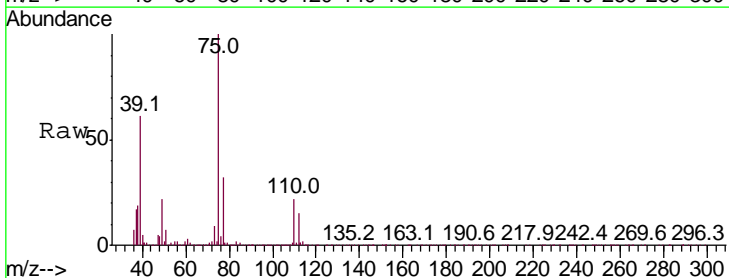
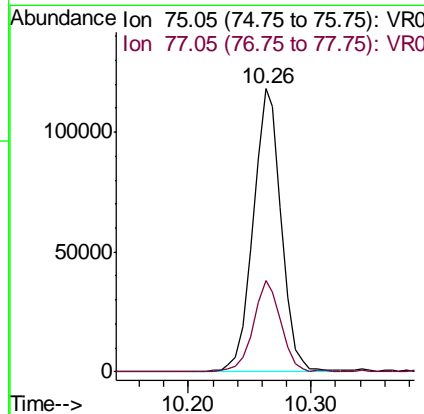
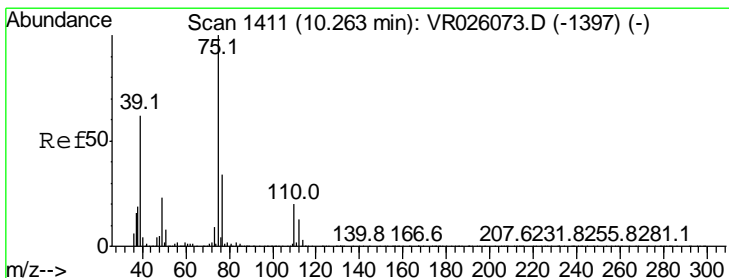
Instrument : MSVOA_R
 Client Sampled :

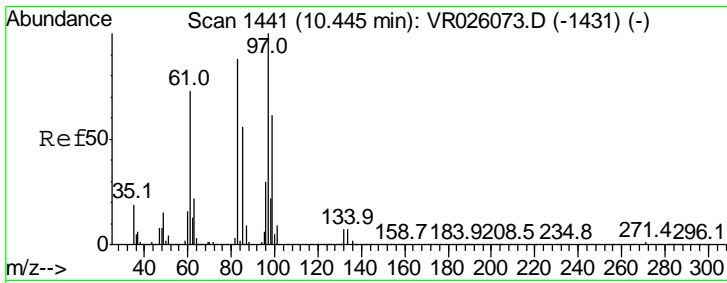
| Tgt Ion | Resp | Lower | Upper |
|---------|------|-------|-------|
| 91 | 100 | | |
| 92 | 58.7 | 40.8 | 75.8 |



#44
 trans-1,3-Dichloropropene
 Concen: 5.135 ug/L
 RT: 10.26 min Scan# 1411
 Delta R.T. 0.00 min
 Lab File: VR026078.D
 Acq: 15 Oct 2018 17:53

| Tgt Ion | Resp | Lower | Upper |
|---------|------|-------|-------|
| 75 | 100 | | |
| 77 | 32.5 | 24.1 | 44.7 |

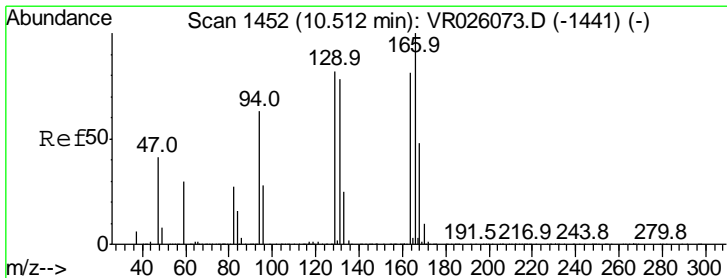
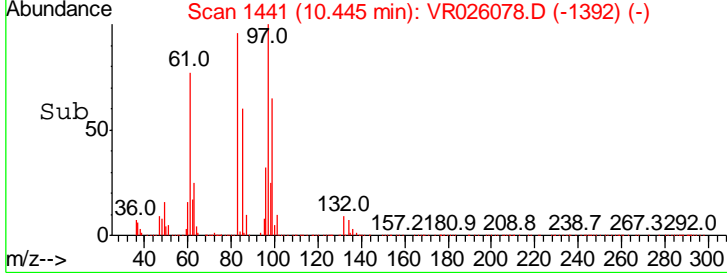
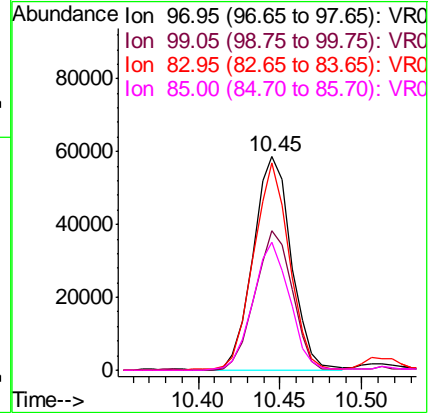
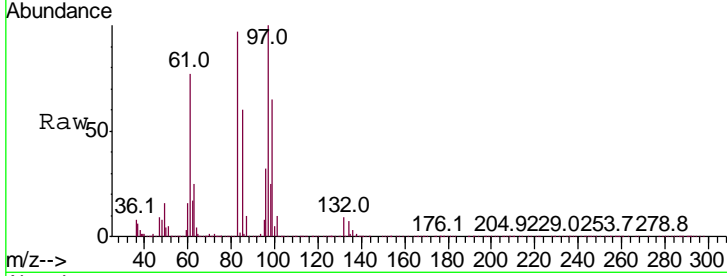




#45
 1,1,2-Trichloroethane
 Concen: 4.900 ug/L
 RT: 10.45 min Scan# 1441
 Delta R.T. 0.00 min
 Lab File: VR026078.D
 Acq: 15 Oct 2018 17:53

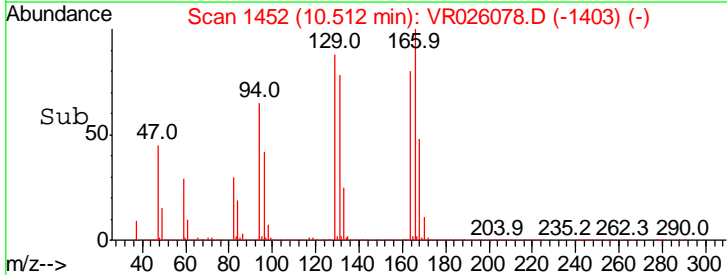
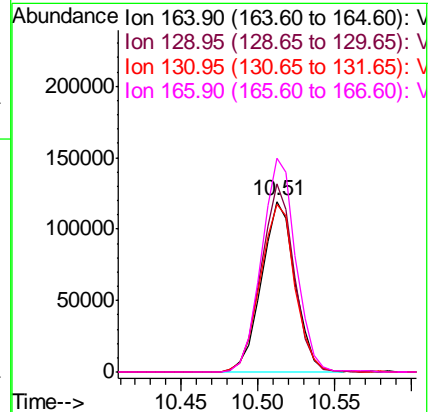
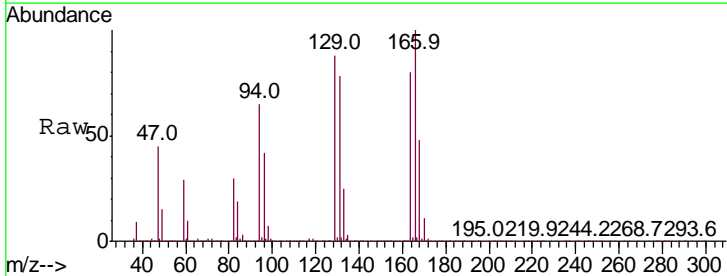
Instrument : MSVOA_R
 ClientSampled :

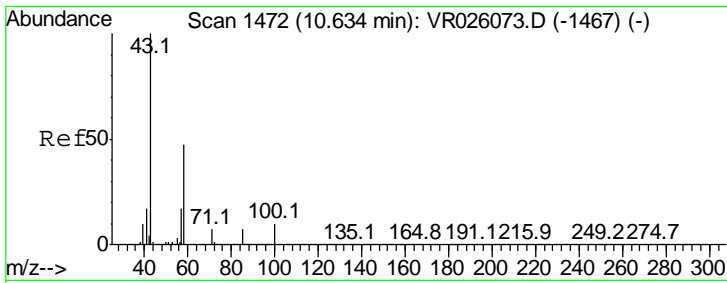
| Tgt Ion | Resp | Lower | Upper |
|---------|------|-------|-------|
| 97 | 100 | | |
| 99 | 65.4 | 42.8 | 79.4 |
| 83 | 97.0 | 61.9 | 114.9 |
| 85 | 60.0 | 39.3 | 72.9 |



#47
 Tetrachloroethene
 Concen: 4.580 ug/L
 RT: 10.51 min Scan# 1452
 Delta R.T. 0.00 min
 Lab File: VR026078.D
 Acq: 15 Oct 2018 17:53

| Tgt Ion | Resp | Lower | Upper |
|---------|-------|-------|-------|
| 164 | 100 | | |
| 129 | 110.5 | 70.3 | 130.5 |
| 131 | 98.0 | 67.3 | 125.1 |
| 166 | 125.0 | 86.1 | 159.9 |

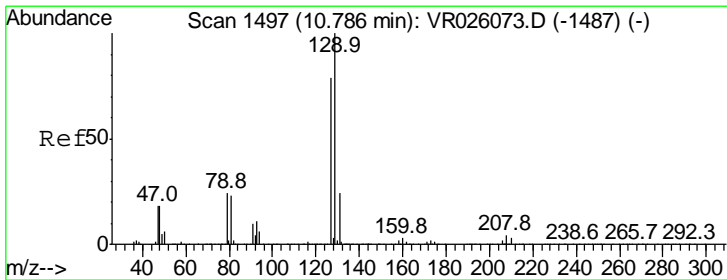
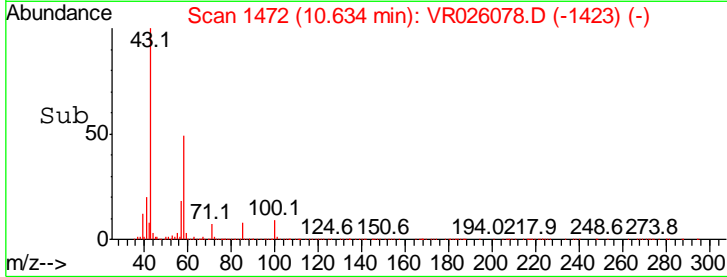
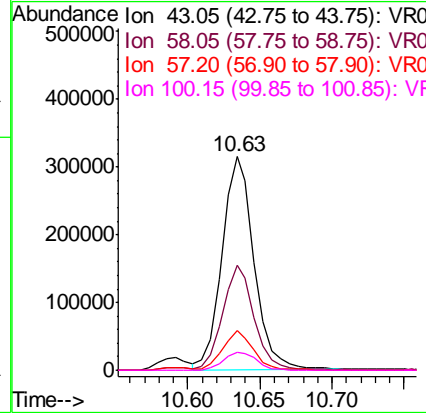
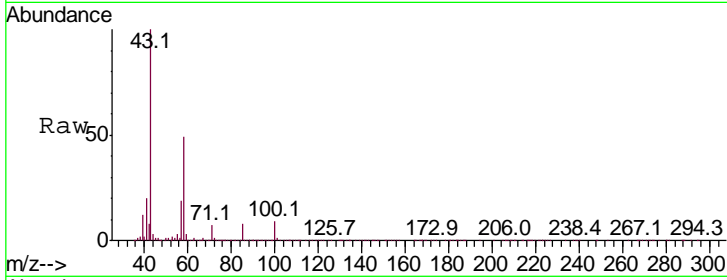




#48
 2-Hexanone
 Concen: 53.351 ug/L
 RT: 10.63 min Scan# 1472
 Delta R.T. 0.00 min
 Lab File: VR026078.D
 Acq: 15 Oct 2018 17:53

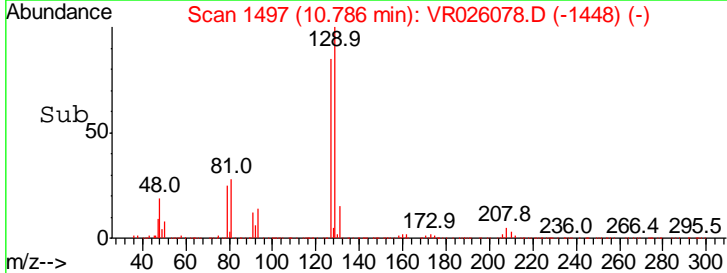
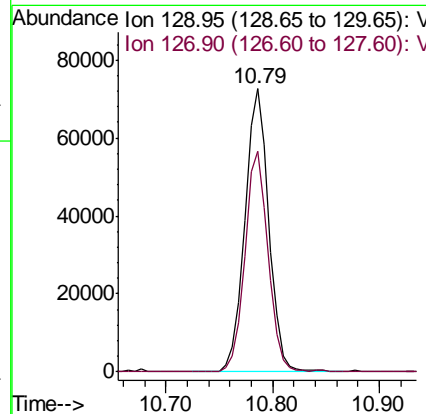
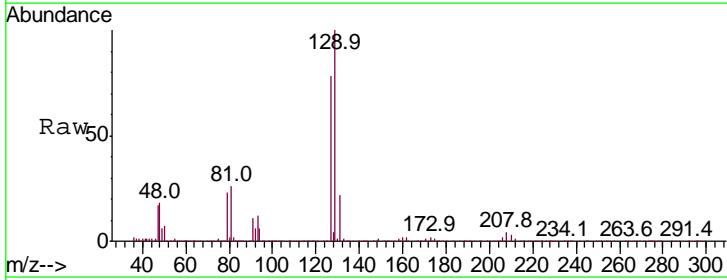
Instrument :
 MSVOA_R
 ClientSampled :

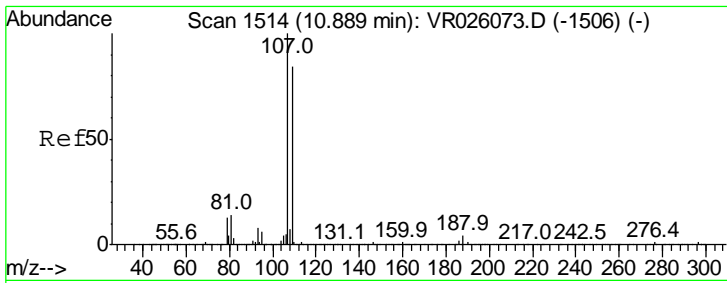
| Tgt Ion | Resp | Lower | Upper |
|---------|--------|-------|-------|
| 43 | 487962 | | |
| 58 | 50.3 | 39.6 | 59.4 |
| 57 | 17.8 | 14.0 | 21.0 |
| 100 | 9.0 | 7.0 | 10.6 |



#49
 Dibromochloromethane
 Concen: 5.235 ug/L
 RT: 10.79 min Scan# 1497
 Delta R.T. 0.00 min
 Lab File: VR026078.D
 Acq: 15 Oct 2018 17:53

| Tgt Ion | Resp | Lower | Upper |
|---------|--------|-------|-------|
| 129 | 113944 | | |
| 127 | 77.9 | 55.0 | 102.2 |

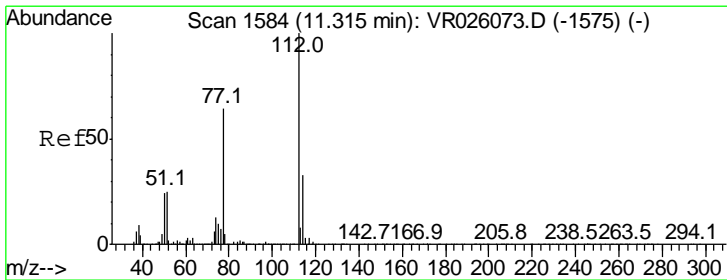
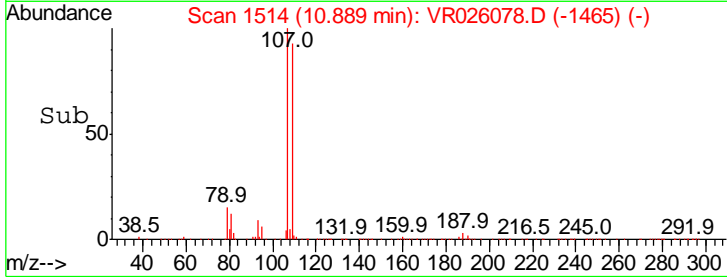
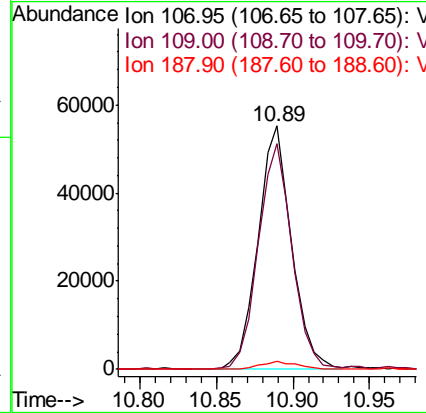
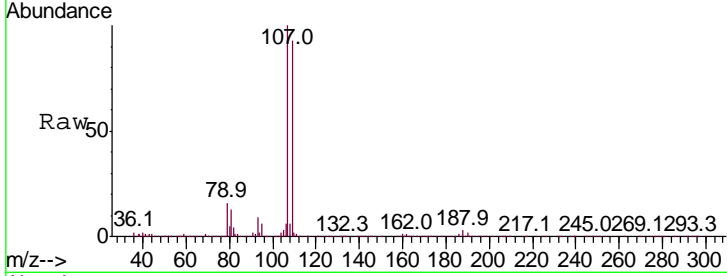




#50
 1,2-Dibromoethane
 Concen: 5.057 ug/L
 RT: 10.89 min Scan# 1514
 Delta R.T. 0.00 min
 Lab File: VR026078.D
 Acq: 15 Oct 2018 17:53

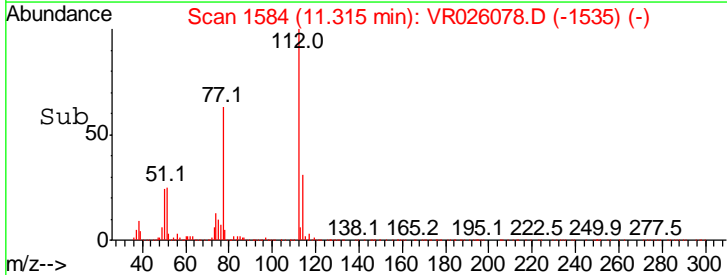
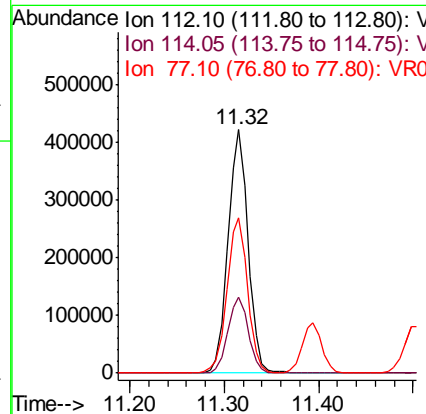
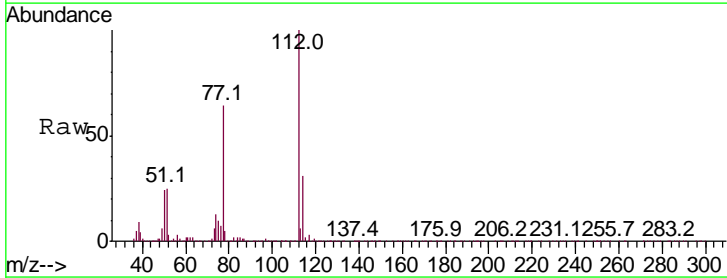
Instrument :
 MSVOA_R
 ClientSampled :

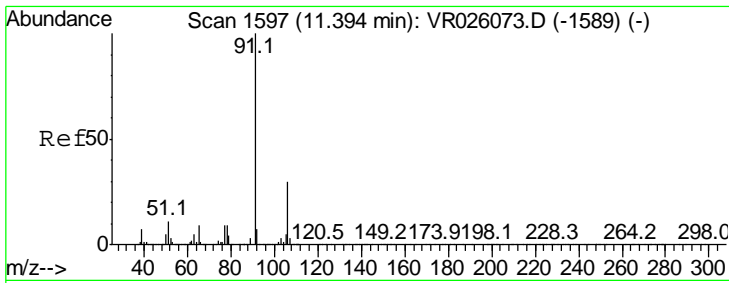
| Tgt Ion | Resp | Lower | Upper |
|---------|------|-------|-------|
| 107 | 100 | | |
| 109 | 92.8 | 58.7 | 109.1 |
| 188 | 3.4 | 2.9 | 4.3 |



#51
 Chlorobenzene
 Concen: 4.888 ug/L
 RT: 11.32 min Scan# 1584
 Delta R.T. 0.00 min
 Lab File: VR026078.D
 Acq: 15 Oct 2018 17:53

| Tgt Ion | Resp | Lower | Upper |
|---------|------|-------|-------|
| 112 | 100 | | |
| 114 | 31.0 | 22.8 | 42.4 |
| 77 | 63.5 | 51.5 | 77.3 |

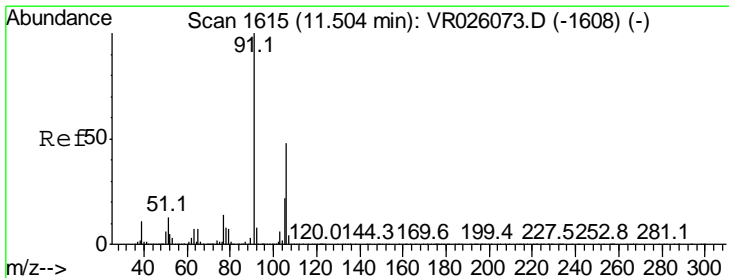
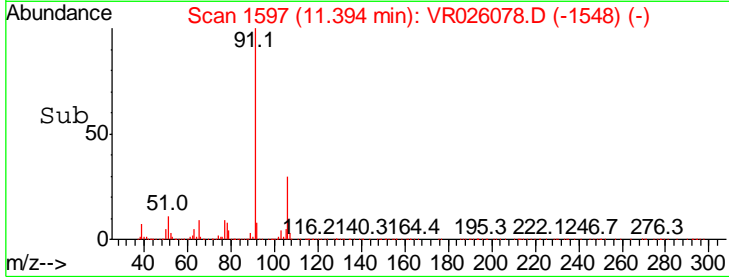
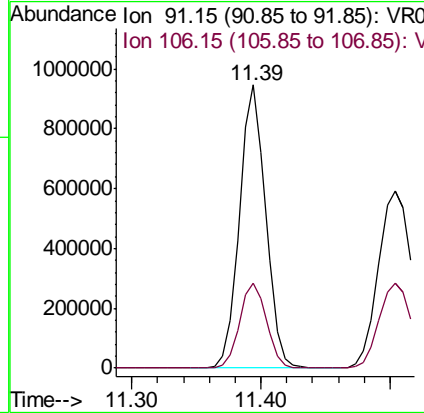
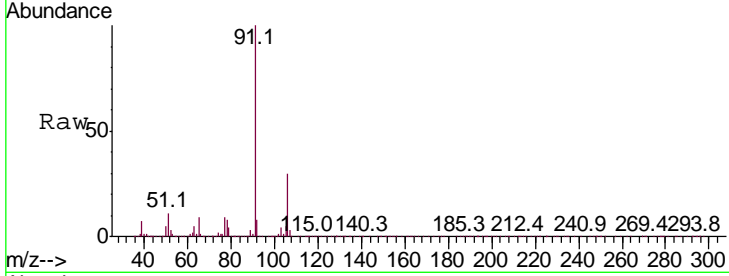




#52
 Ethylbenzene
 Concen: 5.049 ug/L
 RT: 11.39 min Scan# 1597
 Delta R.T. 0.00 min
 Lab File: VR026078.D
 Acq: 15 Oct 2018 17:53

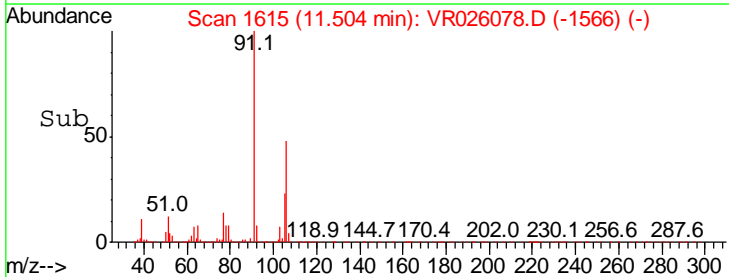
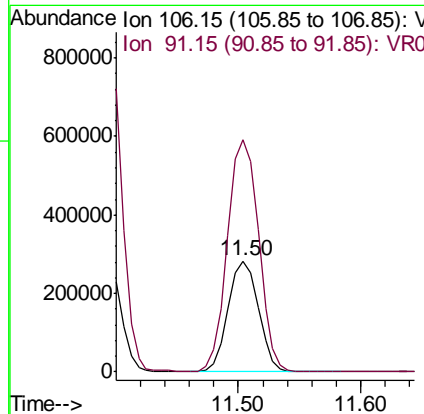
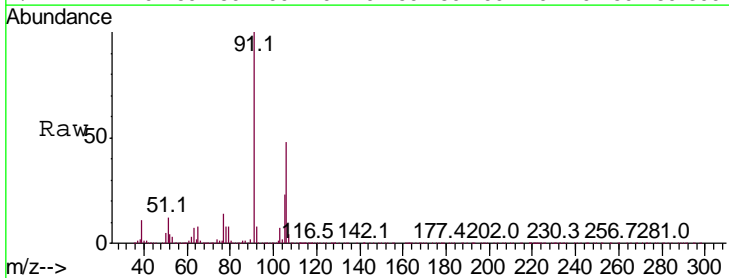
Instrument :
 MSVOA_R
 ClientSampled :

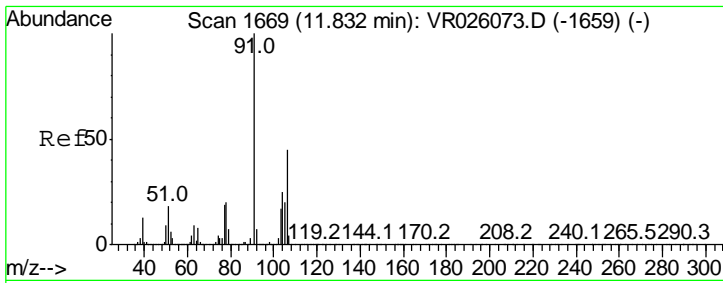
Tgt Ion: 91 Resp: 1331855
 Ion Ratio Lower Upper
 91 100
 106 30.2 21.2 39.4



#53
 m,p-Xylene
 Concen: 5.056 ug/L
 RT: 11.50 min Scan# 1615
 Delta R.T. 0.00 min
 Lab File: VR026078.D
 Acq: 15 Oct 2018 17:53

Tgt Ion: 106 Resp: 485947
 Ion Ratio Lower Upper
 106 100
 91 209.0 145.3 269.8

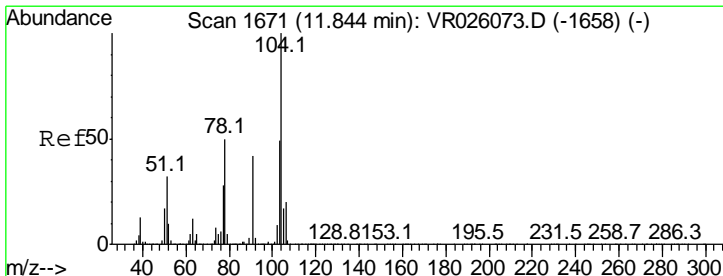
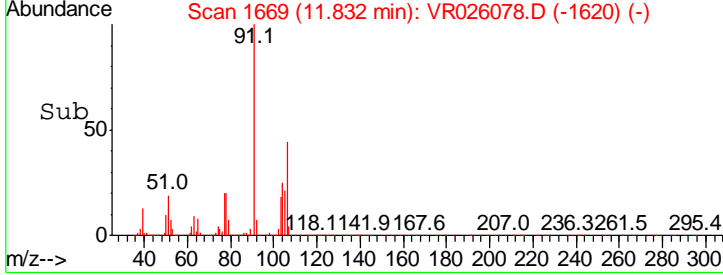
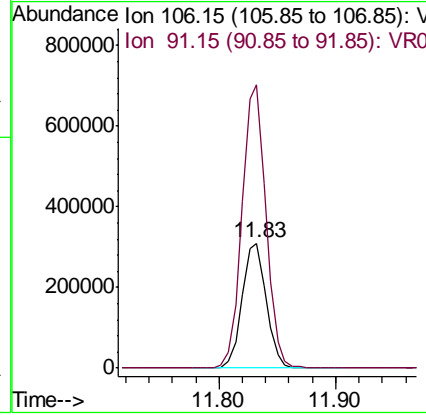
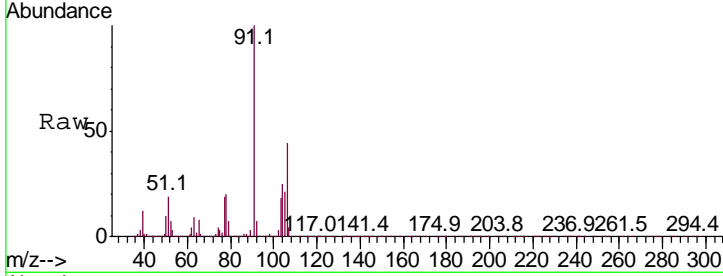




#54
 o-Xylene
 Concen: 5.081 ug/L
 RT: 11.83 min Scan# 1669
 Delta R.T. 0.00 min
 Lab File: VR026078.D
 Acq: 15 Oct 2018 17:53

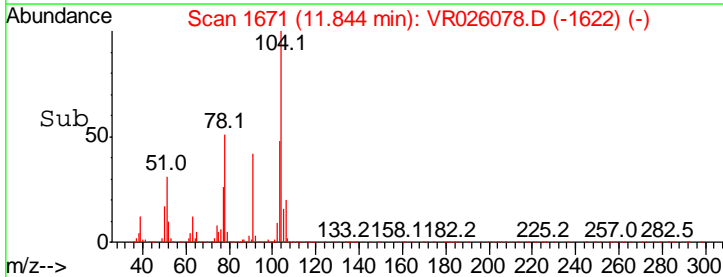
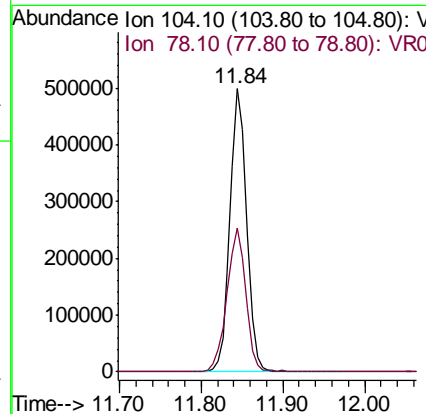
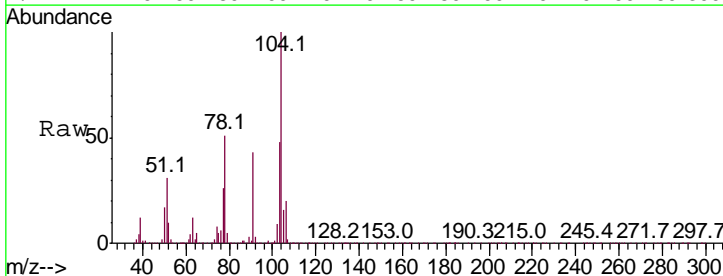
Instrument : MSVOA_R
 Client Sampled :

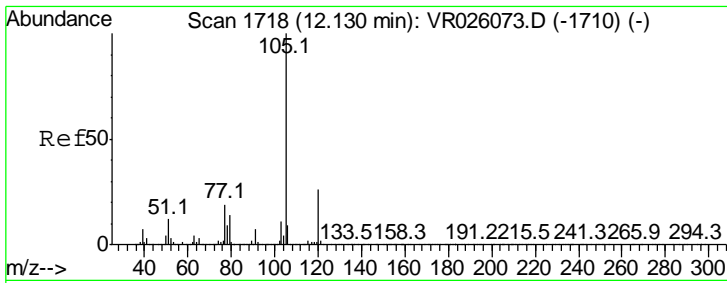
| Tgt Ion | Resp | Lower | Upper |
|---------|-------|-------|-------|
| 106 | 100 | | |
| 91 | 226.3 | 155.8 | 289.3 |



#55
 Styrene
 Concen: 5.191 ug/L
 RT: 11.84 min Scan# 1671
 Delta R.T. 0.00 min
 Lab File: VR026078.D
 Acq: 15 Oct 2018 17:53

| Tgt Ion | Resp | Lower | Upper |
|---------|------|-------|-------|
| 104 | 100 | | |
| 78 | 50.8 | 34.7 | 64.5 |

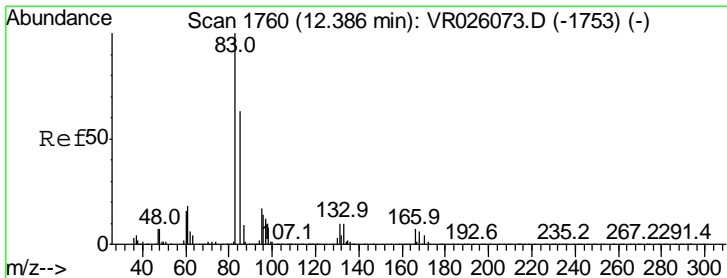
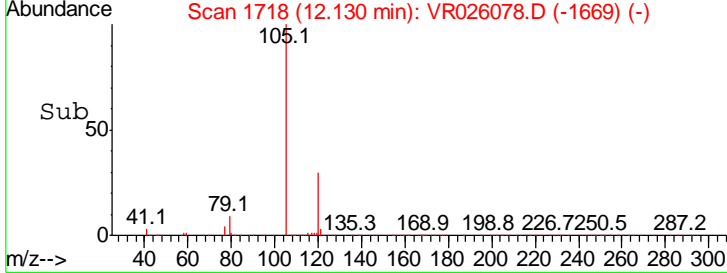
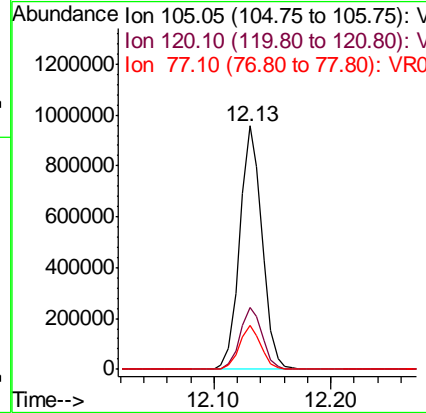
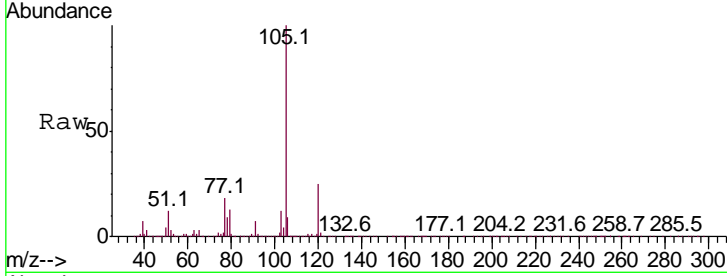




#56
 Isopropylbenzene
 Concen: 5.209 ug/L
 RT: 12.13 min Scan# 1718
 Delta R.T. 0.00 min
 Lab File: VR026078.D
 Acq: 15 Oct 2018 17:53

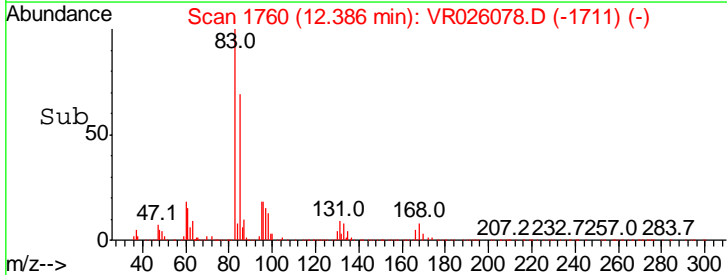
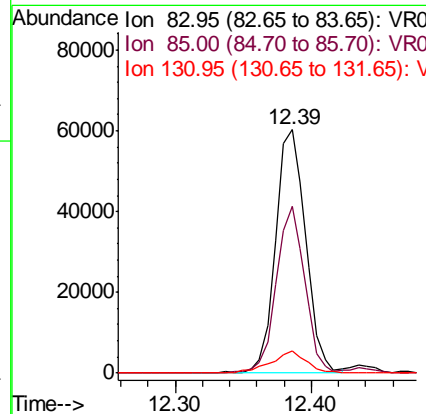
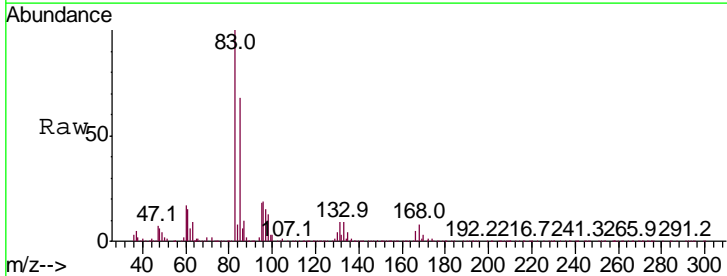
Instrument : MSVOA_R
 ClientSampled :

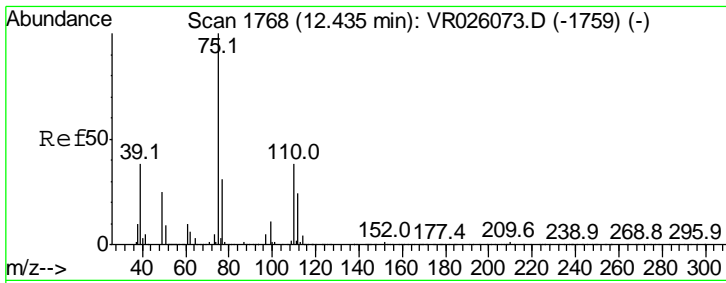
| Tgt Ion | Resp | Lower | Upper |
|---------|------|-------|-------|
| 105 | 100 | | |
| 120 | 25.3 | 21.0 | 31.4 |
| 77 | 17.5 | 14.6 | 21.8 |



#58
 1,1,2,2-Tetrachloroethane
 Concen: 4.717 ug/L
 RT: 12.39 min Scan# 1760
 Delta R.T. 0.00 min
 Lab File: VR026078.D
 Acq: 15 Oct 2018 17:53

| Tgt Ion | Resp | Lower | Upper |
|---------|------|-------|-------|
| 83 | 100 | | |
| 85 | 68.4 | 44.0 | 81.8 |
| 131 | 9.1 | 8.0 | 12.0 |

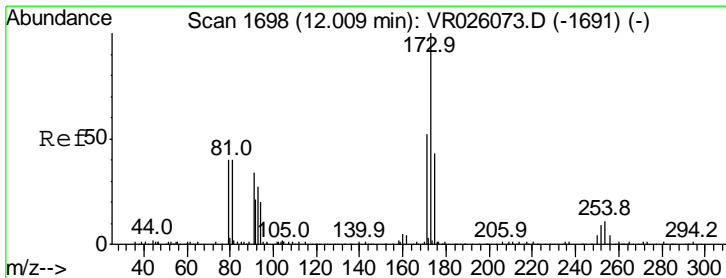
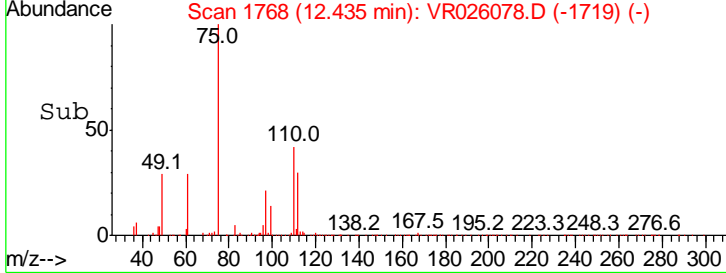
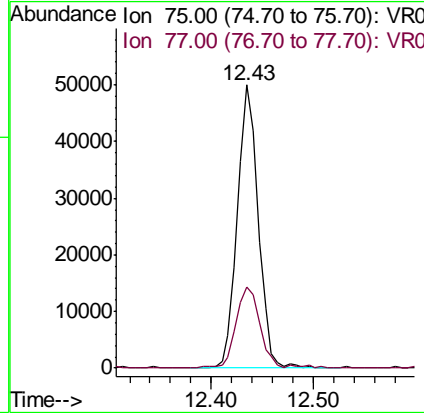
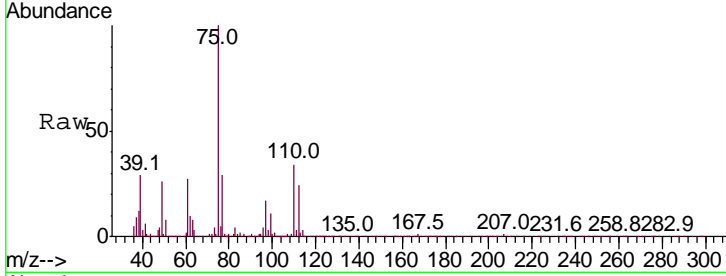




#59
 1,2,3-Trichloropropane
 Concen: 4.864 ug/L
 RT: 12.43 min Scan# 1768
 Delta R.T. 0.00 min
 Lab File: VR026078.D
 Acq: 15 Oct 2018 17:53

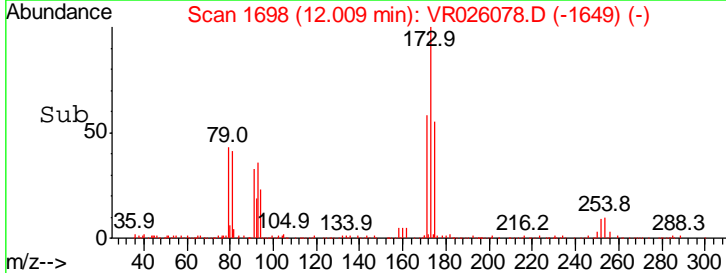
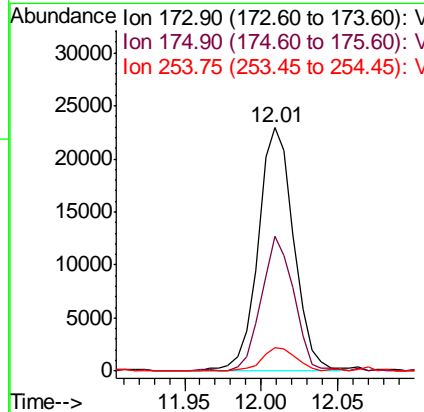
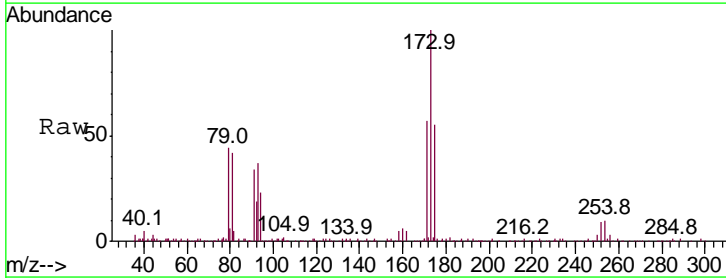
Instrument : MSVOA_R
 ClientSampled :

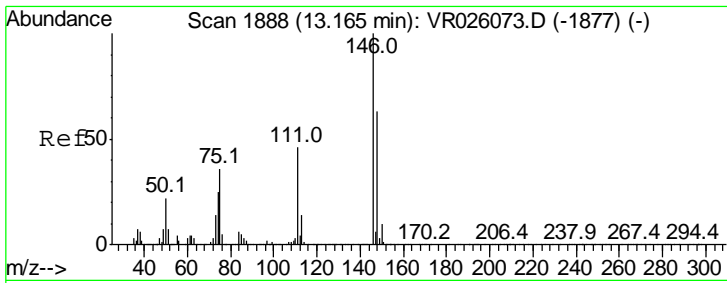
| Tgt Ion | Resp | Lower | Upper |
|---------|-------|-------|-------|
| 75 | 70194 | | |
| 75 | 100 | | |
| 77 | 32.7 | 26.2 | 39.2 |



#61
 Bromoform
 Concen: 4.823 ug/L
 RT: 12.01 min Scan# 1698
 Delta R.T. 0.00 min
 Lab File: VR026078.D
 Acq: 15 Oct 2018 17:53

| Tgt Ion | Resp | Lower | Upper |
|---------|-------|-------|-------|
| 173 | 36742 | | |
| 173 | 100 | | |
| 175 | 51.0 | 39.0 | 58.4 |
| 254 | 9.8 | 8.1 | 12.1 |

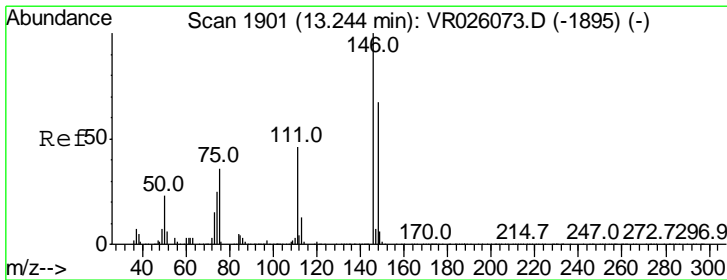
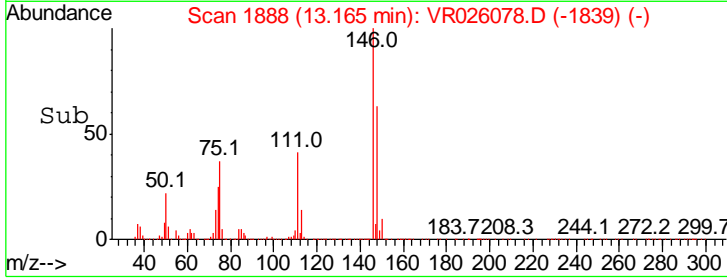
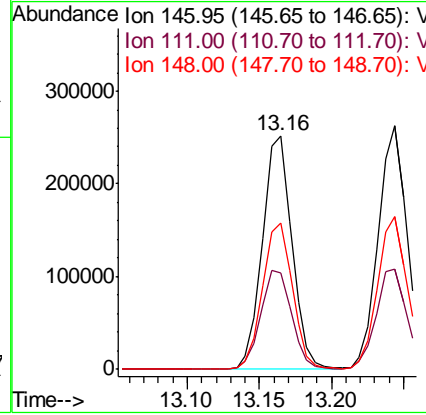
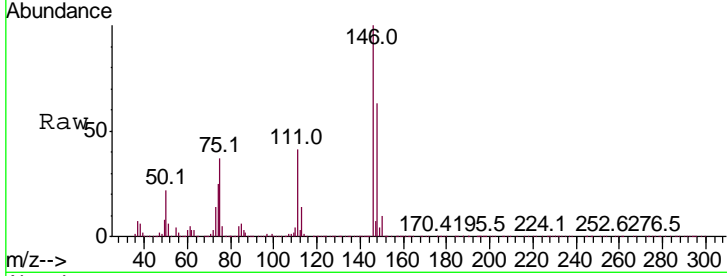




#62
 1,3-Dichlorobenzene
 Concen: 4.889 ug/L
 RT: 13.16 min Scan# 1888
 Delta R.T. 0.00 min
 Lab File: VR026078.D
 Acq: 15 Oct 2018 17:53

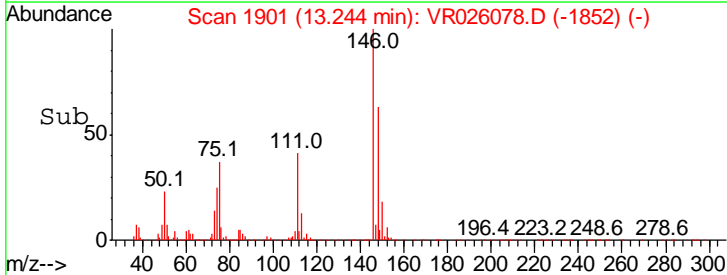
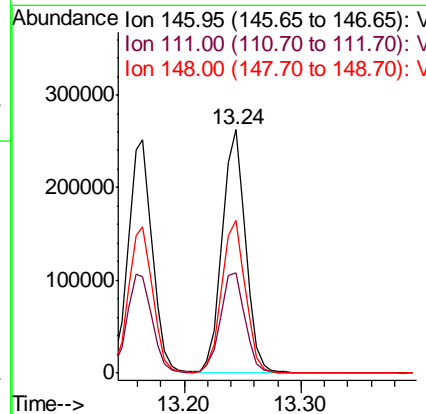
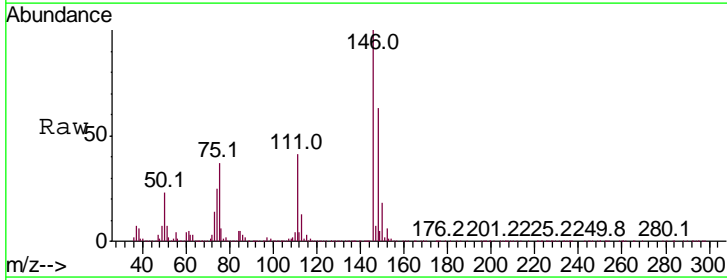
Instrument :
 MSVOA_R
 ClientSampled :

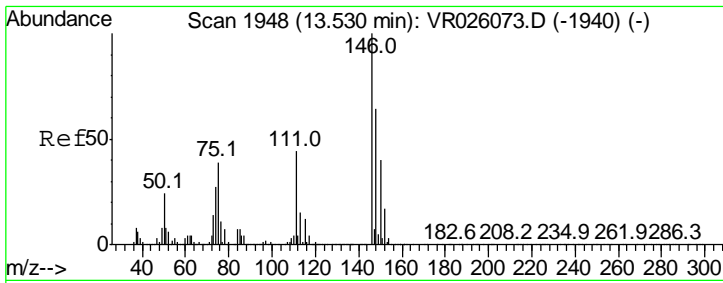
| Tgt Ion | Resp | Lower | Upper |
|---------|------|-------|-------|
| 146 | 100 | | |
| 111 | 41.3 | 32.1 | 59.7 |
| 148 | 62.6 | 43.8 | 81.3 |



#63
 1,4-Dichlorobenzene
 Concen: 4.807 ug/L
 RT: 13.24 min Scan# 1901
 Delta R.T. 0.00 min
 Lab File: VR026078.D
 Acq: 15 Oct 2018 17:53

| Tgt Ion | Resp | Lower | Upper |
|---------|------|-------|-------|
| 146 | 100 | | |
| 111 | 40.9 | 32.6 | 60.6 |
| 148 | 63.0 | 46.7 | 86.7 |

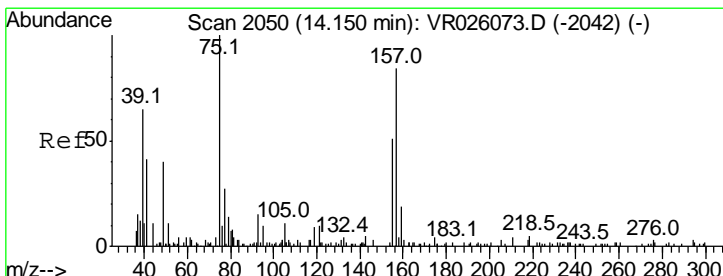
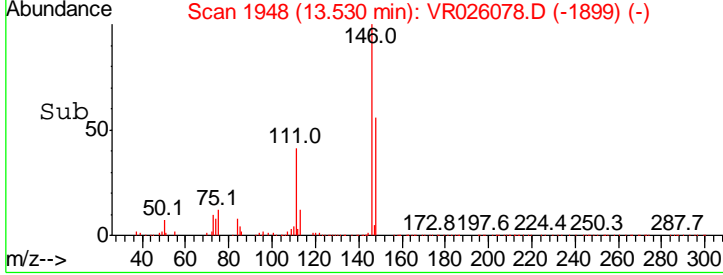
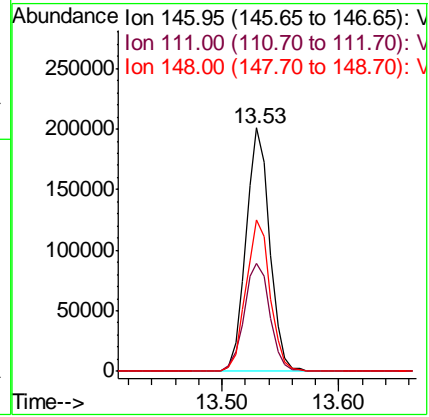
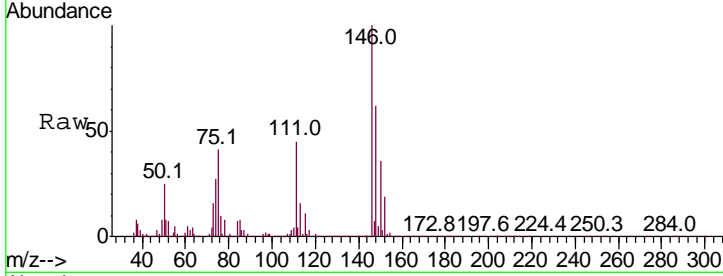




#65
 1,2-Dichlorobenzene
 Concen: 4.871 ug/L
 RT: 13.53 min Scan# 1948
 Delta R.T. 0.00 min
 Lab File: VR026078.D
 Acq: 15 Oct 2018 17:53

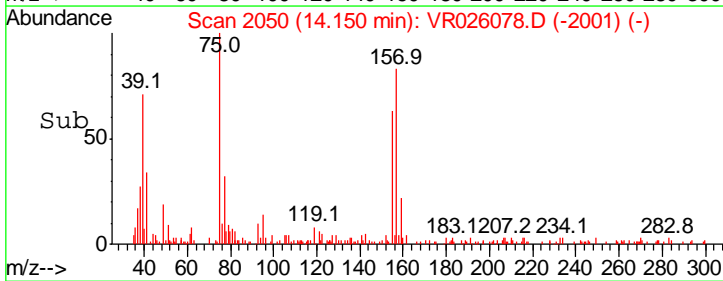
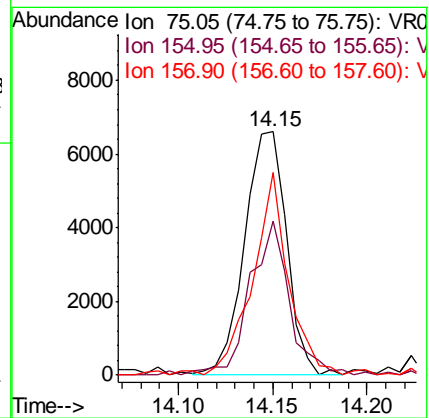
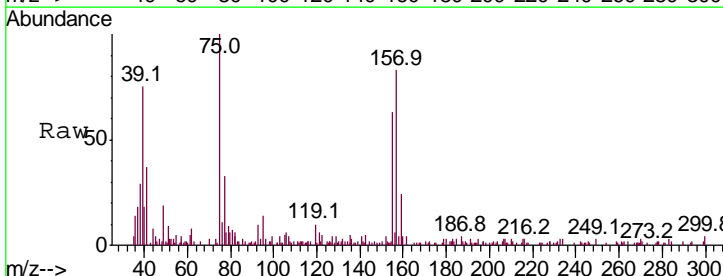
Instrument :
 MSVOA_R
 ClientSampled :

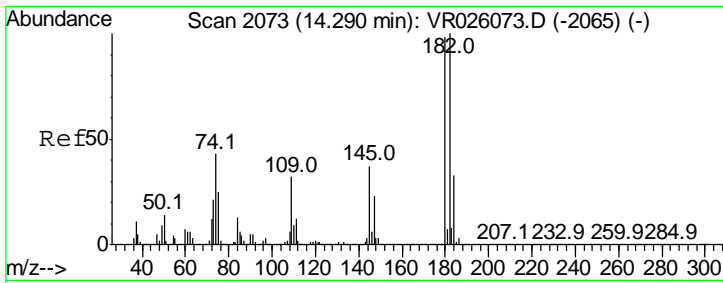
| Tgt Ion | Resp | Lower | Upper |
|---------|------|-------|-------|
| 146 | 100 | | |
| 111 | 44.5 | 35.2 | 52.8 |
| 148 | 62.3 | 51.2 | 76.8 |



#66
 1,2-Dibromo-3-chloropropane
 Concen: 4.280 ug/L
 RT: 14.15 min Scan# 2050
 Delta R.T. 0.00 min
 Lab File: VR026078.D
 Acq: 15 Oct 2018 17:53

| Tgt Ion | Resp | Lower | Upper |
|---------|------|-------|-------|
| 75 | 100 | | |
| 155 | 63.2 | 40.9 | 61.3# |
| 157 | 83.3 | 67.3 | 100.9 |

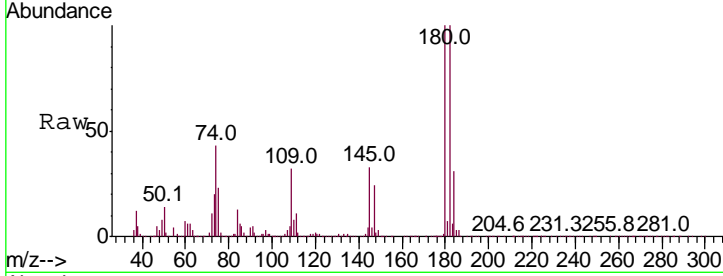




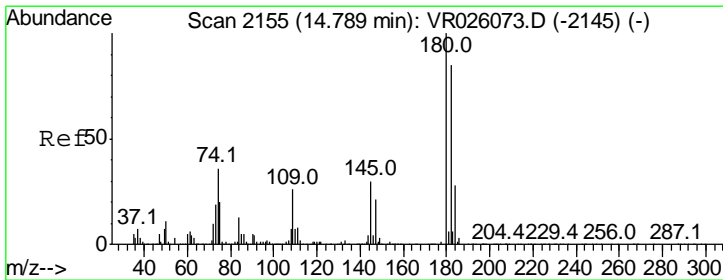
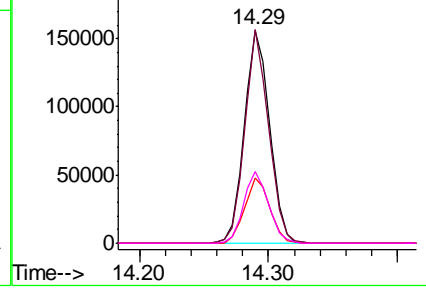
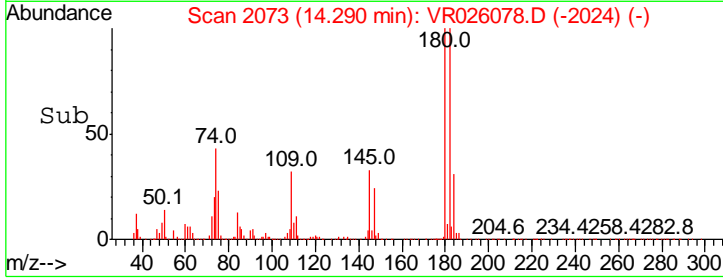
#67
 1,3,5-Trichlorobenzene
 Concen: 4.738 ug/L
 RT: 14.29 min Scan# 2073
 Delta R.T. 0.00 min
 Lab File: VR026078.D
 Acq: 15 Oct 2018 17:53

Instrument : MSVOA_R
 ClientSampled :

| Tgt Ion | Resp | Lower | Upper |
|---------|------|-------|-------|
| 180 | 100 | | |
| 182 | 94.6 | 77.5 | 116.3 |
| 184 | 30.6 | 25.0 | 37.4 |
| 145 | 33.4 | 27.6 | 41.4 |

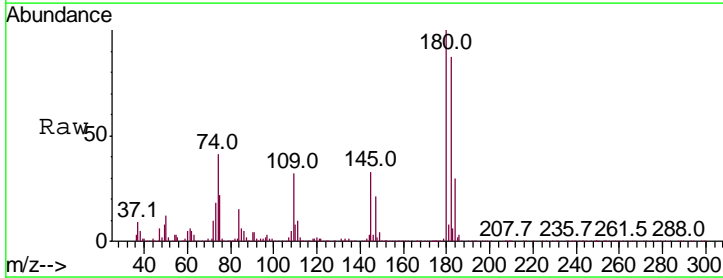


Abundance Ion 180.00 (179.70 to 180.70): V
 Ion 182.00 (181.70 to 182.70): V
 Ion 184.00 (183.70 to 184.70): V
 Ion 145.00 (144.70 to 145.70): V

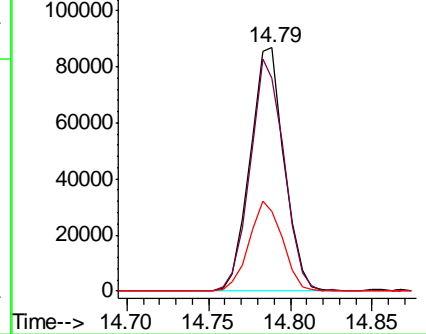
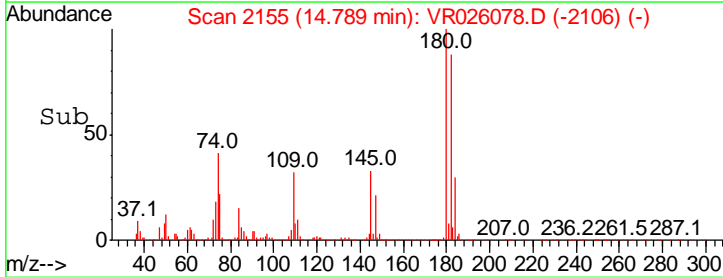


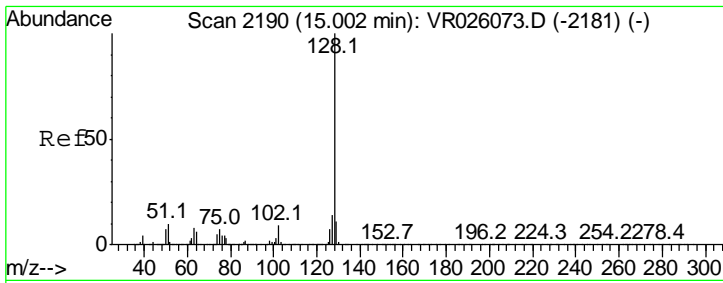
#68
 1,2,4-trichlorobenzene
 Concen: 4.871 ug/L
 RT: 14.79 min Scan# 2155
 Delta R.T. 0.00 min
 Lab File: VR026078.D
 Acq: 15 Oct 2018 17:53

| Tgt Ion | Resp | Lower | Upper |
|---------|------|-------|-------|
| 180 | 100 | | |
| 182 | 95.3 | 76.1 | 114.1 |
| 145 | 36.4 | 28.2 | 42.4 |



Abundance Ion 179.90 (179.60 to 180.60): V
 Ion 182.00 (181.70 to 182.70): V
 Ion 144.95 (144.65 to 145.65): V

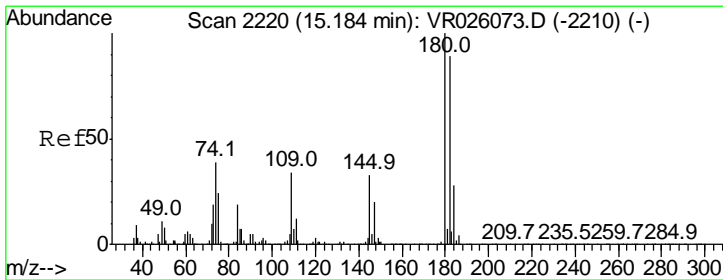
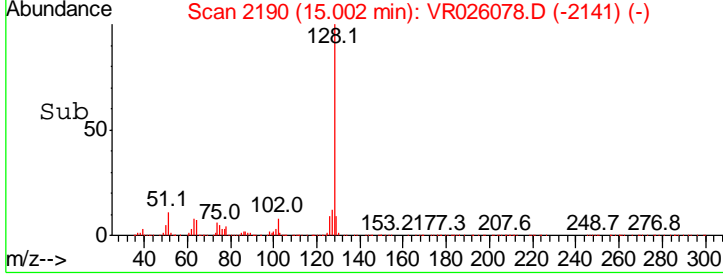
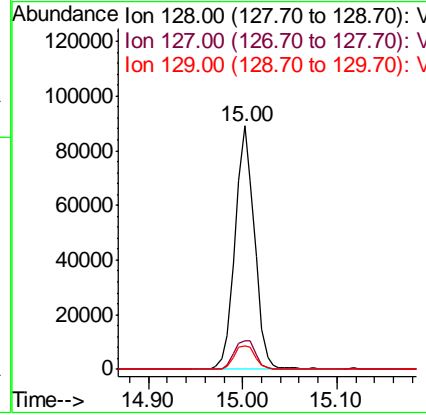
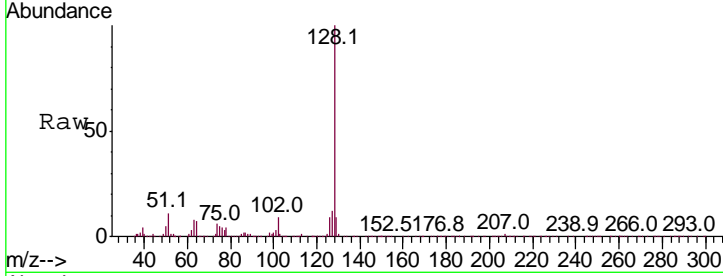




#69
 Naphthalene
 Concen: 5.032 ug/L
 RT: 15.00 min Scan# 2190
 Delta R.T. 0.00 min
 Lab File: VR026078.D
 Acq: 15 Oct 2018 17:53

Instrument : MSVOA_R
 ClientSampled :

| Tgt Ion | Resp | Lower | Upper |
|---------|--------|-------|-------|
| 128 | 126510 | | |
| 127 | 13.5 | 11.0 | 16.6 |
| 129 | 10.9 | 9.1 | 13.7 |



#70
 1,2,3-Trichlorobenzene
 Concen: 4.874 ug/L
 RT: 15.18 min Scan# 2219
 Delta R.T. -0.01 min
 Lab File: VR026078.D
 Acq: 15 Oct 2018 17:53

| Tgt Ion | Resp | Lower | Upper |
|---------|-------|-------|-------|
| 180 | 87653 | | |
| 182 | 92.3 | 75.7 | 113.5 |
| 145 | 37.6 | 28.8 | 43.2 |

