

Data Path : Z:\VOASRV\HPCHEM1\MSVOA R\DATA\VR101518\
 Data File : VR026085.D
 Acq On : 15 Oct 2018 22:22
 Operator : SY/MD
 Sample : J5379-03
 Misc : 25mL/MSVOA R/WATER
 ALS Vial : 18 Sample Multiplier: 1

Instrument :
 MSVOA_R
 ClientSampleId :

Quant Time: Oct 16 08:25:23 2018
 Quant Method : Z:\VOASRV\HPCHEM1\MSVOA_R\METHODS\SOMRTR101518WMA.M
 Quant Title : TRACE VOA SOM01.0
 QLast Update : Tue Oct 16 08:21:47 2018
 Response via : Initial Calibration

Internal Standards	R.T.	QIon	Response	Conc	Units	Dev(Min)
1) 1,4-Difluorobenzene	8.46	114	557151	5.00	ug/L	0.00
28) Chlorobenzene-d5	11.29	117	473951	5.00	ug/L	0.00
60) 1,4-Dichlorobenzene-d4	13.23	152	148188	5.00	ug/L	0.00

System Monitoring Compounds

4) Vinyl Chloride-d3	2.15	65	252518	5.18	ug/L	0.00
Spiked Amount	5.000	Range	40 - 130	Recovery	=	103.60%
7) Chloroethane-d5	2.63	69	223014	5.32	ug/L	0.00
Spiked Amount	5.000	Range	65 - 130	Recovery	=	106.40%
11) 1,1-Dichloroethene-d2	3.60	63	459996	3.84	ug/L	-0.02
Spiked Amount	5.000	Range	60 - 125	Recovery	=	76.80%
20) 2-Butanone-d5	6.59	46	233794	58.40	ug/L	0.00
Spiked Amount	50.000	Range	40 - 130	Recovery	=	116.80%
24) Chloroform-d	7.20	84	383019	4.94	ug/L	0.00
Spiked Amount	5.000	Range	70 - 125	Recovery	=	98.80%
26) 1,2-Dichloroethane-d4	7.90	65	164305	5.10	ug/L	0.00
Spiked Amount	5.000	Range	70 - 130	Recovery	=	102.00%
32) Benzene-d6	7.85	84	761390	5.00	ug/L	0.00
Spiked Amount	5.000	Range	70 - 125	Recovery	=	100.00%
36) 1,2-Dichloropropane-d6	8.90	67	216281	5.50	ug/L	0.00
Spiked Amount	5.000	Range	60 - 140	Recovery	=	110.00%
41) Toluene-d8	9.97	98	713300	4.96	ug/L	0.00
Spiked Amount	5.000	Range	70 - 130	Recovery	=	99.20%
43) trans-1,3-Dichloropropene-	10.24	79	51296	4.98	ug/L	0.00
Spiked Amount	5.000	Range	55 - 130	Recovery	=	99.60%
46) 2-Hexanone-d5	10.59	63	187124	62.83	ug/L	0.00
Spiked Amount	50.000	Range	45 - 130	Recovery	=	125.66%
57) 1,1,2,2-Tetrachloroethane-	12.36	84	78350	5.08	ug/L	0.00
Spiked Amount	5.000	Range	65 - 120	Recovery	=	101.60%
64) 1,2-Dichlorobenzene-d4	13.51	152	127895	5.46	ug/L	0.00
Spiked Amount	5.000	Range	80 - 120	Recovery	=	109.20%

Target Compounds

Target Compounds	R.T.	QIon	Response	Conc	Units	Ovalue
3) Chloromethane	2.02	50	14886	0.250	ug/L	96
12) 1,1-Dichloroethene	3.63	96	9160	0.169	ug/L #	1
13) Acetone	3.70	43	13577	3.281	ug/L	87
18) trans-1,2-Dichloroethene	4.88	96	14297	0.349	ug/L	78
19) 1,1-Dichloroethane	5.69	63	30864	0.401	ug/L #	89
22) cis-1,2-Dichloroethene	6.67	96	4691018	121.035	ug/L #	88
25) Chloroform	7.23	83	57283	0.763	ug/L	98
29) 1,1,1-Trichloroethane	7.43	97	39616	0.612	ug/L	97
34) Trichloroethene	8.71	95	13104874	287.905	ug/L	82
35) Methylcyclohexane	8.89	83	49667	0.733	ug/L #	17
37) 1,2-Dichloropropane	8.89	63	26531	0.707	ug/L #	91
44) trans-1,3-Dichloropropene	10.23	75	2925	0.097	ug/L	86
45) 1,1,2-Trichloroethane	10.45	97	8568	0.541	ug/L	90
47) Tetrachloroethene	10.51	164	58646	1.804	ug/L	96
48) 2-Hexanone	10.59	43	27806	3.715	ug/L #	69
49) Dibromochloromethane	10.51	129	49981	2.806	ug/L #	11

Data Path : Z:\VOASRV\HPCHEM1\MSVOA R\DATA\VR101518\
 Data File : VR026085.D
 Acq On : 15 Oct 2018 22:22
 Operator : SY/MD
 Sample : J5379-03
 Misc : 25mL/MSVOA R/WATER
 ALS Vial : 18 Sample Multiplier: 1

Instrument :
 MSVOA_R
 ClientSampleId :

Quant Time: Oct 16 08:25:23 2018
 Quant Method : Z:\VOASRV\HPCHEM1\MSVOA_R\METHODS\SOMRTR101518WMA.M
 Quant Title : TRACE VOA SOM01.0
 QLast Update : Tue Oct 16 08:21:47 2018
 Response via : Initial Calibration

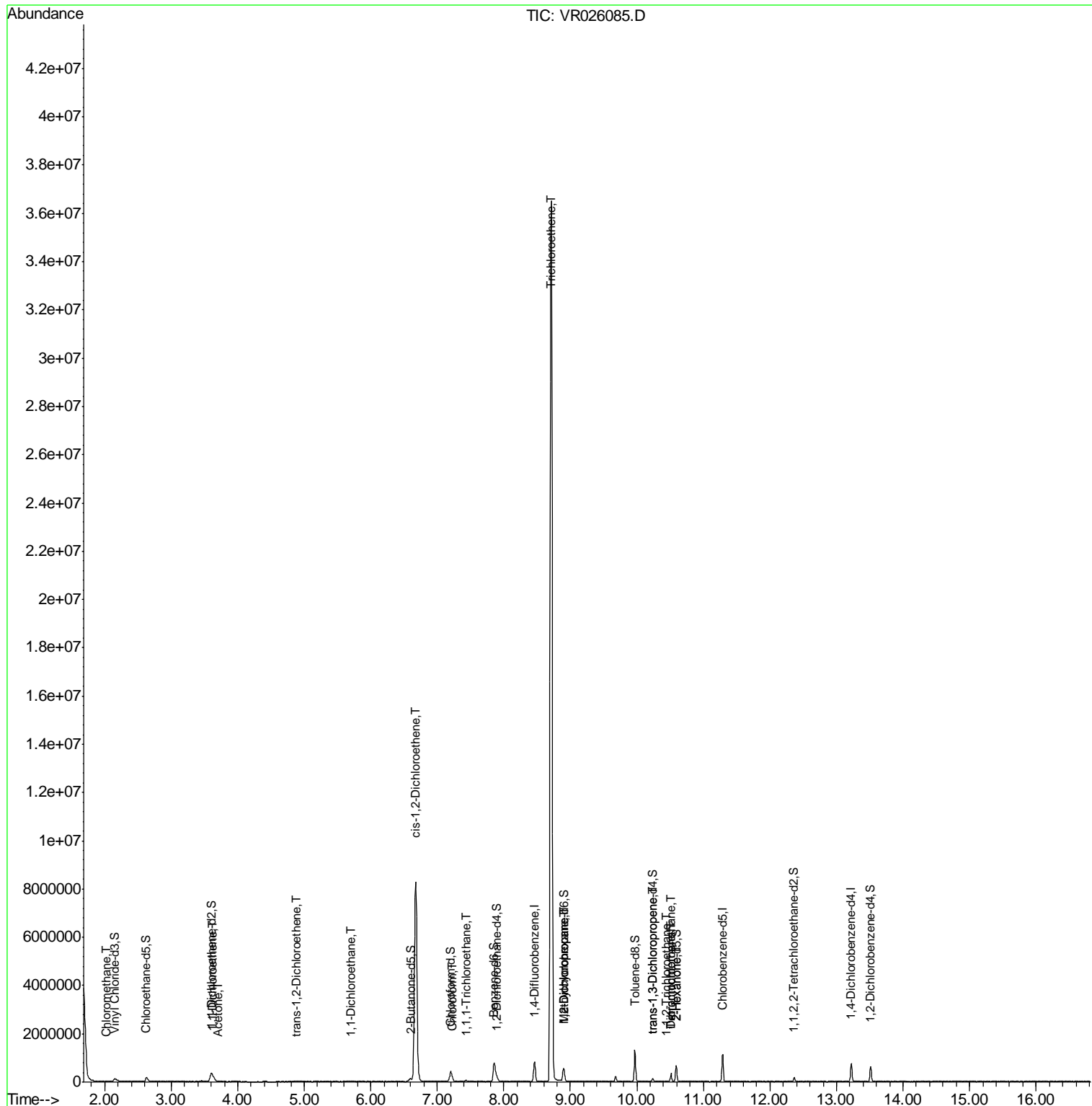
Internal Standards	R.T.	QIon	Response	Conc	Units	Dev(Min)
--------------------	------	------	----------	------	-------	----------

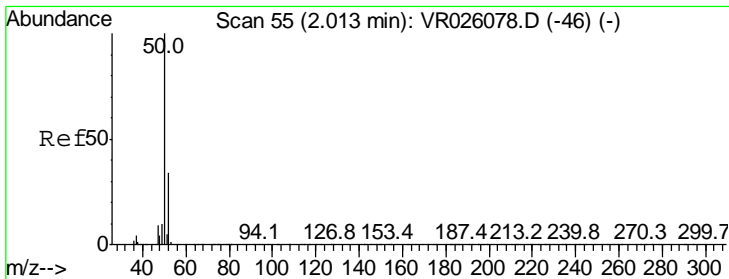
(#) = qualifier out of range (m) = manual integration (+) = signals summed

Data Path : Z:\VOASRV\HPCHEM1\MSVOA R\DATA\VR101518\
 Data File : VR026085.D
 Acq On : 15 Oct 2018 22:22
 Operator : SY/MD
 Sample : J5379-03
 Misc : 25mL/MSVOA R/WATER
 ALS Vial : 18 Sample Multiplier: 1

Instrument :
 MSVOA_R
 ClientSampled :

Quant Time: Oct 16 08:25:23 2018
 Quant Method : Z:\VOASRV\HPCHEM1\MSVOA_R\METHODS\SOMRTR101518WMA.M
 Quant Title : TRACE VOA SOM01.0
 QLast Update : Tue Oct 16 08:21:47 2018
 Response via : Initial Calibration

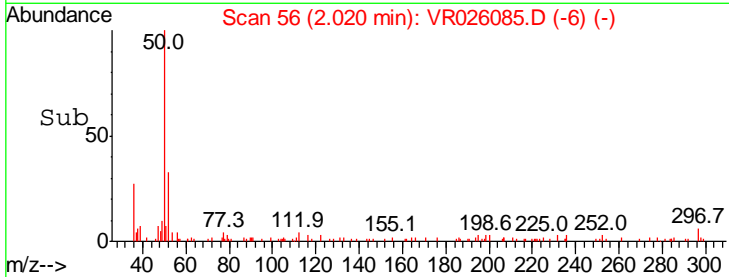
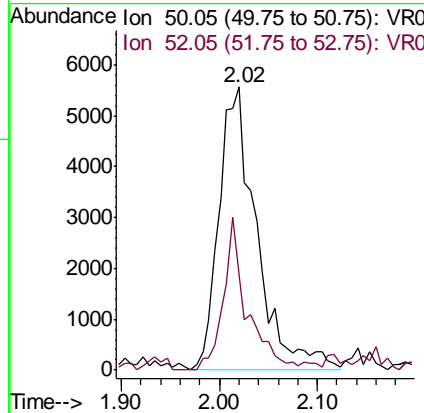
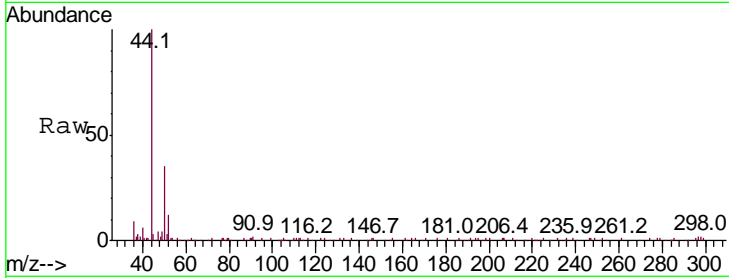




#3
 Chloromethane
 Concen: 0.250 ug/L
 RT: 2.02 min Scan# 56
 Delta R.T. 0.01 min
 Lab File: VR026085.D
 Acq: 15 Oct 2018 22:22

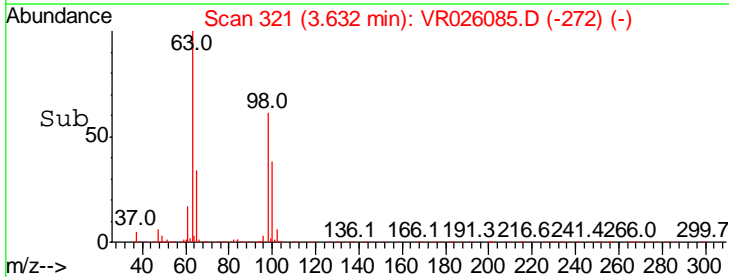
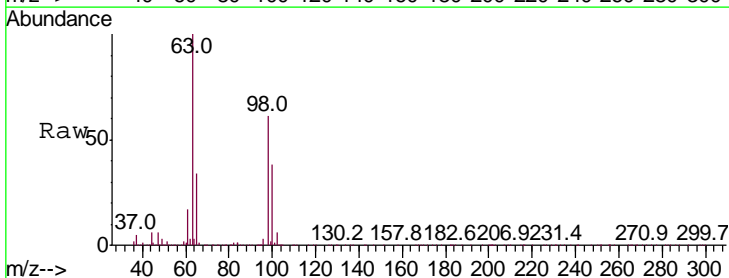
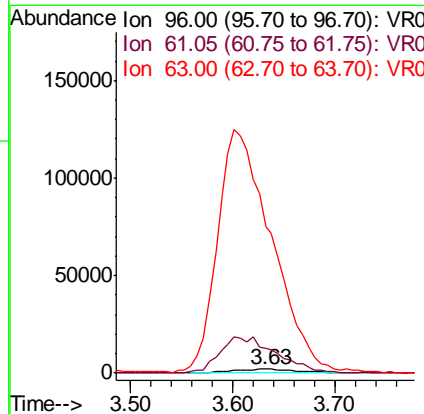
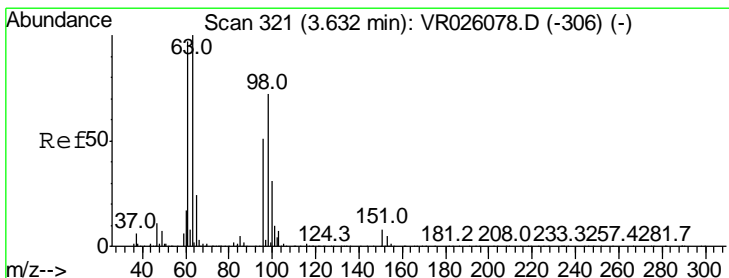
Instrument :
 MSVOA_R
 ClientSampled :

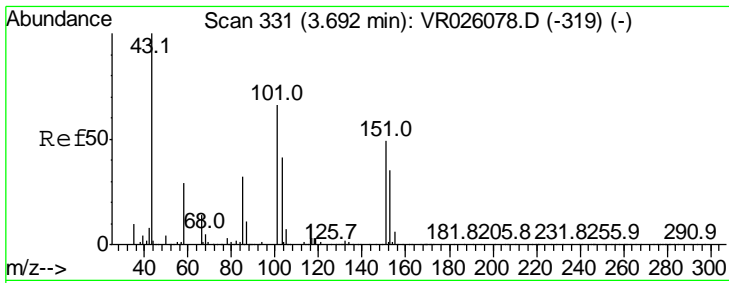
Tgt Ion	Resp	Lower	Upper
50	14886		
52	33.5	22.0	40.8



#12
 1,1-Dichloroethene
 Concen: 0.169 ug/L
 RT: 3.63 min Scan# 321
 Delta R.T. 0.00 min
 Lab File: VR026085.D
 Acq: 15 Oct 2018 22:22

Tgt Ion	Resp	Lower	Upper
96	9160		
61	582.5	126.7	235.3#
63	3482.6	125.0	232.2#

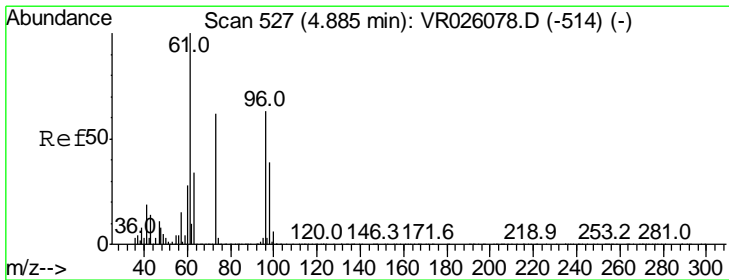
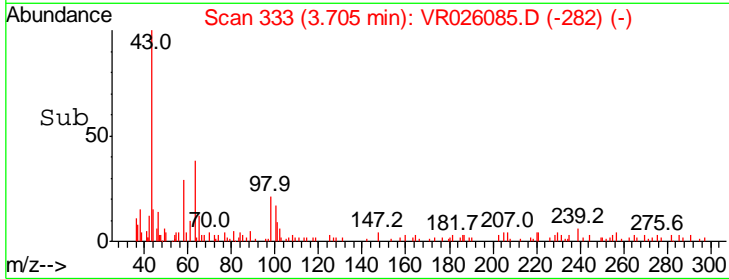
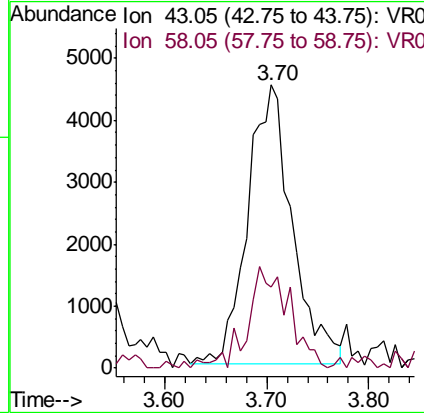
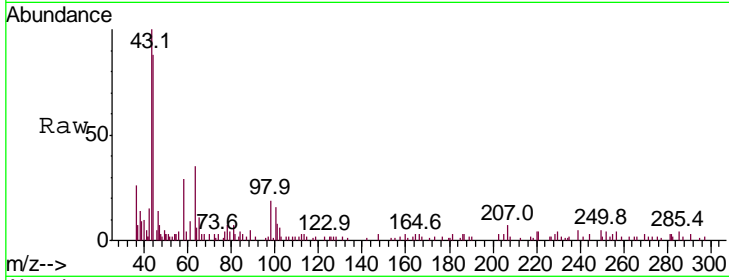




#13
 Acetone
 Concen: 3.281 ug/L
 RT: 3.70 min Scan# 333
 Delta R.T. 0.01 min
 Lab File: VR026085.D
 Acq: 15 Oct 2018 22:22

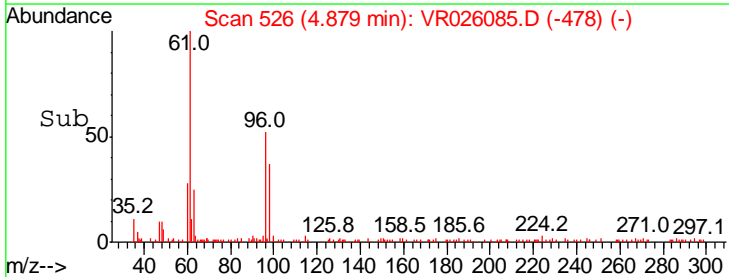
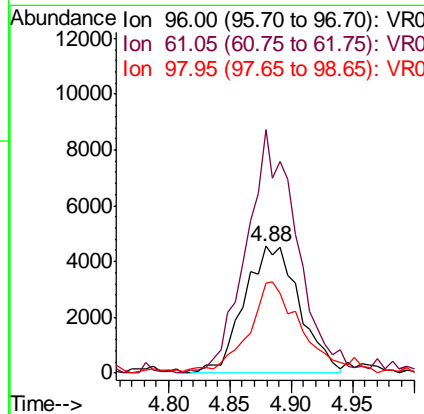
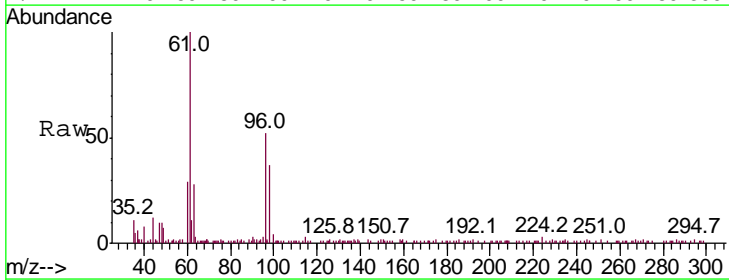
Instrument :
 MSVOA_R
 ClientSampled :

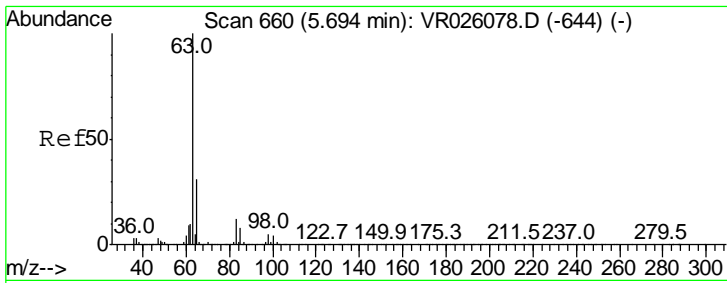
Tgt Ion: 43 Resp: 13577
 Ion Ratio Lower Upper
 43 100
 58 34.4 0.0 55.4



#18
 trans-1,2-Dichloroethene
 Concen: 0.349 ug/L
 RT: 4.88 min Scan# 526
 Delta R.T. -0.01 min
 Lab File: VR026085.D
 Acq: 15 Oct 2018 22:22

Tgt Ion: 96 Resp: 14297
 Ion Ratio Lower Upper
 96 100
 61 192.0 111.4 206.8
 98 70.7 41.4 77.0

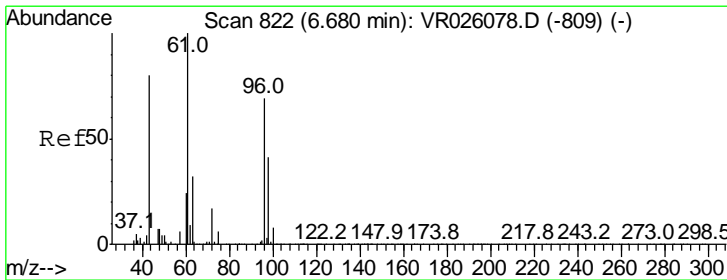
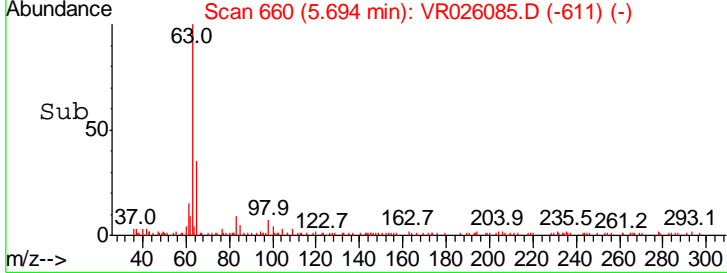
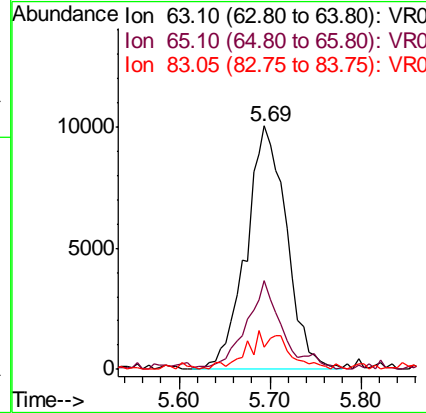
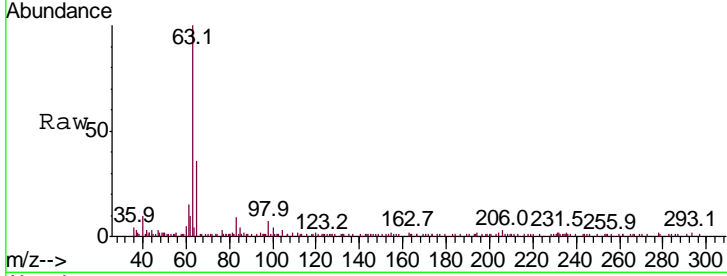




#19
 1,1-Dichloroethane
 Concen: 0.401 ug/L
 RT: 5.69 min Scan# 660
 Delta R.T. 0.00 min
 Lab File: VR026085.D
 Acq: 15 Oct 2018 22:22

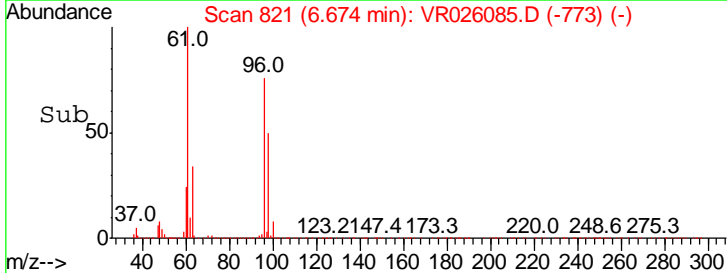
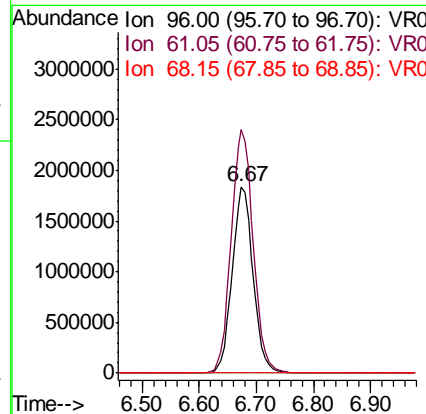
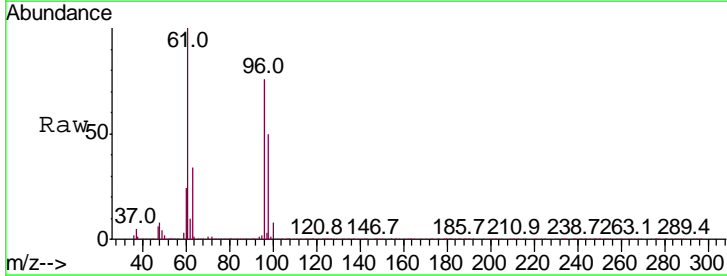
Instrument :
 MSVOA_R
 ClientSampled :

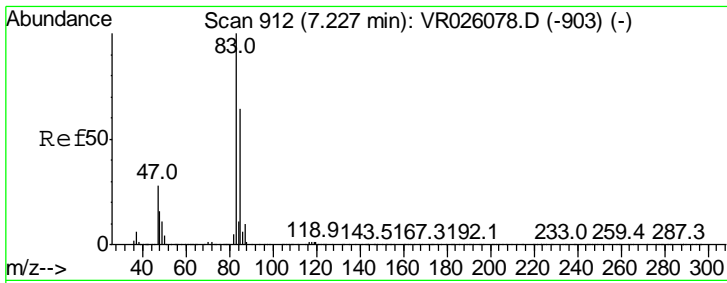
Tgt Ion	Resp	Lower	Upper
63	100		
65	36.3	21.2	39.4
83	9.0	9.2	17.2#



#22
 cis-1,2-Dichloroethene
 Concen: 121.035 ug/L
 RT: 6.67 min Scan# 821
 Delta R.T. -0.01 min
 Lab File: VR026085.D
 Acq: 15 Oct 2018 22:22

Tgt Ion	Resp	Lower	Upper
96	100		
61	130.8	101.8	189.0
68	0.0	0.1	0.3#

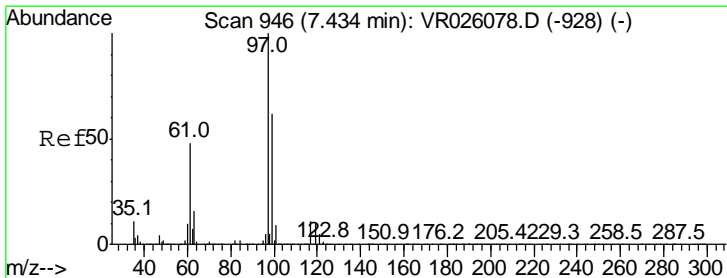
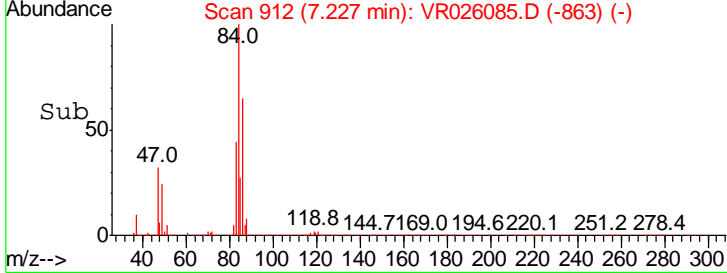
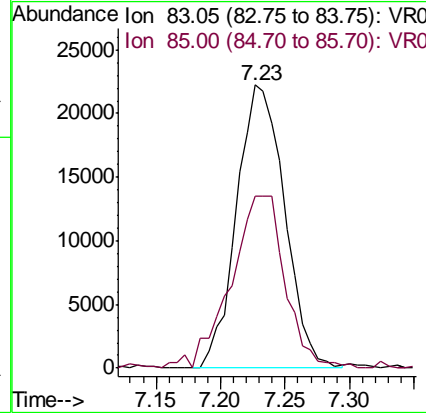
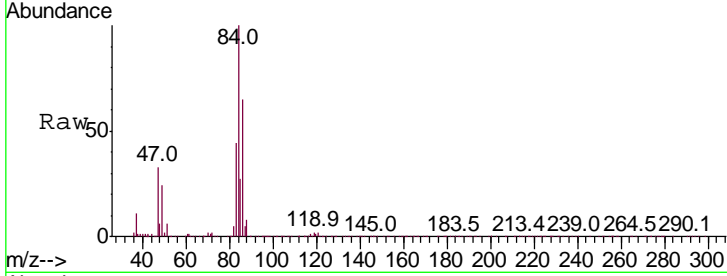




#25
 Chloroform
 Concen: 0.763 ug/L
 RT: 7.23 min Scan# 912
 Delta R.T. 0.00 min
 Lab File: VR026085.D
 Acq: 15 Oct 2018 22:22

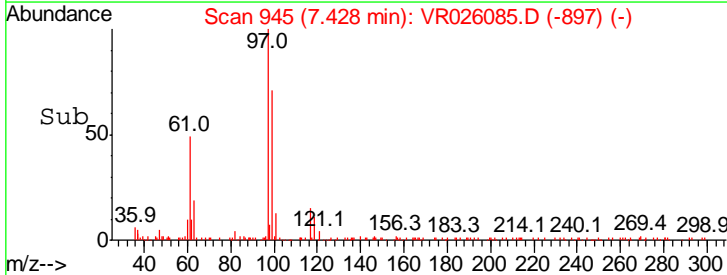
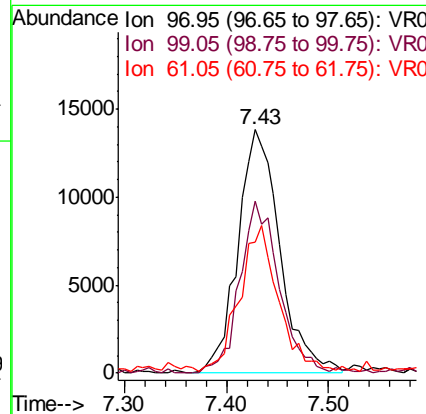
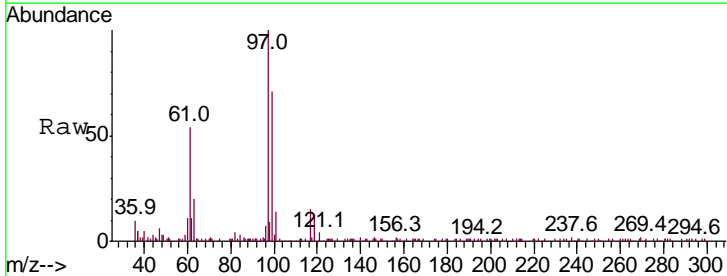
Instrument :
 MSVOA_R
 ClientSampled :

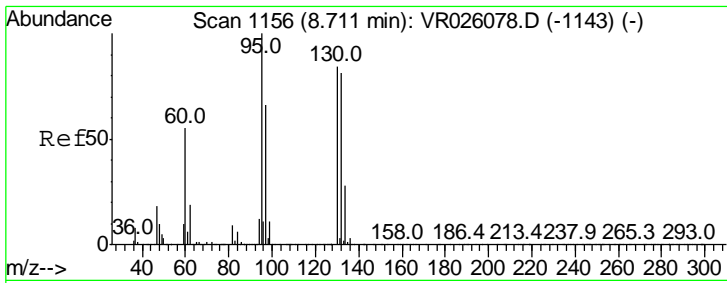
Tgt Ion	Resp	Lower	Upper
83	100		
85	60.9	43.5	80.7



#29
 1,1,1-Trichloroethane
 Concen: 0.612 ug/L
 RT: 7.43 min Scan# 945
 Delta R.T. -0.01 min
 Lab File: VR026085.D
 Acq: 15 Oct 2018 22:22

Tgt Ion	Resp	Lower	Upper
97	100		
99	65.4	51.1	76.7
61	55.4	42.1	63.1



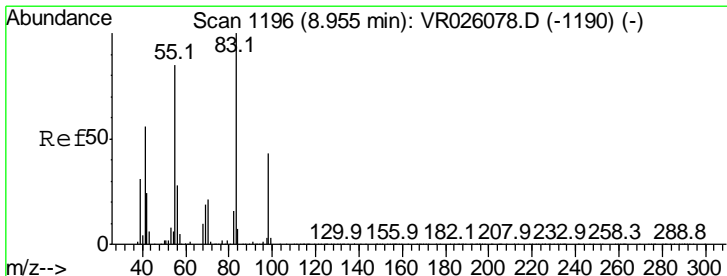
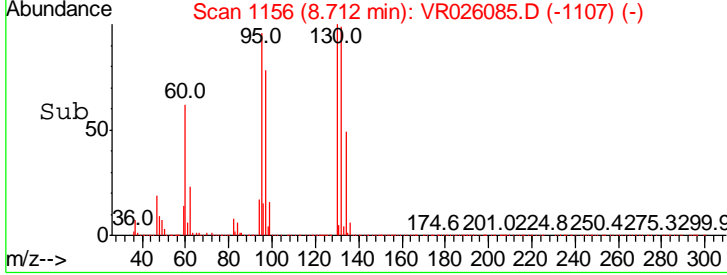
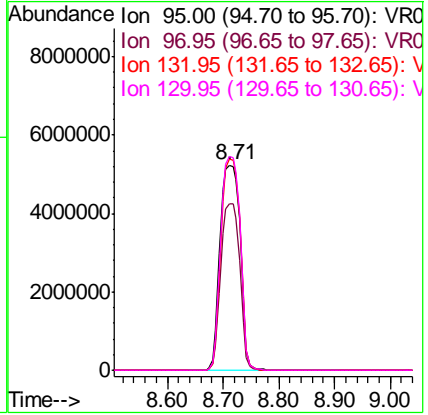
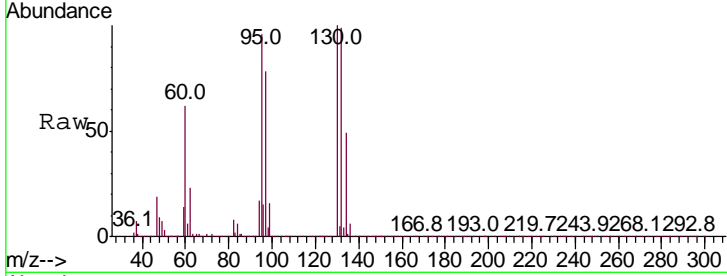


#34
 Trichloroethene
 Concen: 287.905 ug/L
 RT: 8.71 min Scan# 1156
 Delta R.T. 0.00 min
 Lab File: VR026085.D
 Acq: 15 Oct 2018 22:22

Instrument :
 MSVOA_R
 ClientSampled :

Tgt Ion: 95 Resp: 13104874

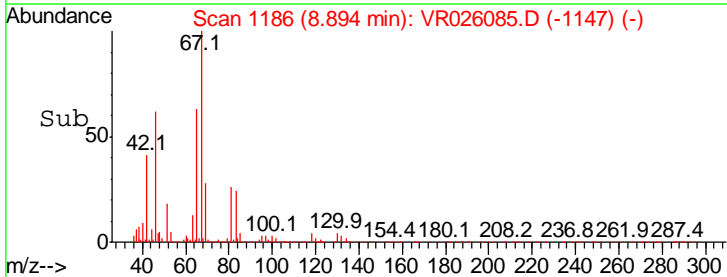
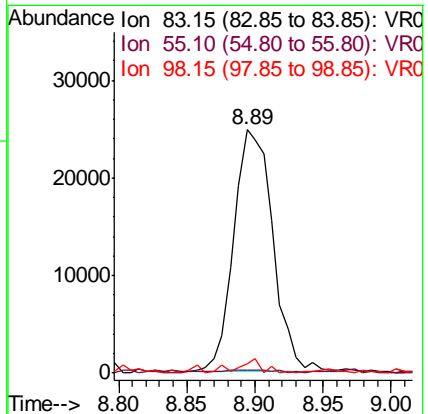
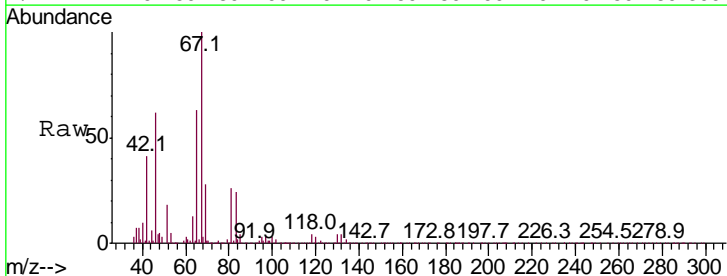
Ion	Ratio	Lower	Upper
95	100		
97	81.3	45.7	84.9
132	102.9	58.3	108.3
130	104.2	64.0	119.0

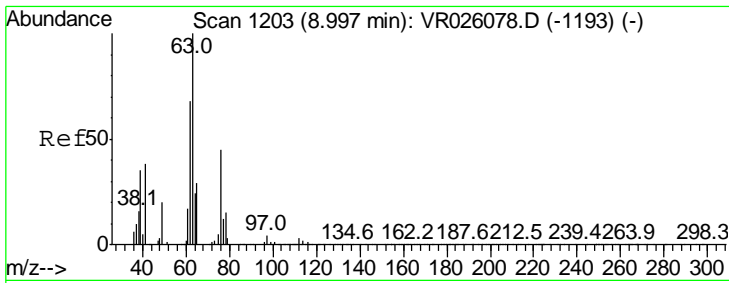


#35
 Methylcyclohexane
 Concen: 0.733 ug/L
 RT: 8.89 min Scan# 1186
 Delta R.T. -0.06 min
 Lab File: VR026085.D
 Acq: 15 Oct 2018 22:22

Tgt Ion: 83 Resp: 49667

Ion	Ratio	Lower	Upper
83	100		
55	1.7	66.8	100.2#
98	0.0	35.2	52.8#

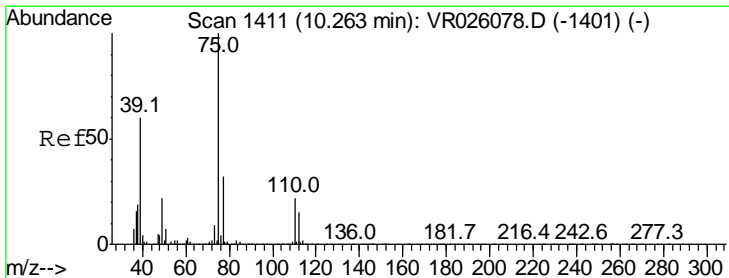
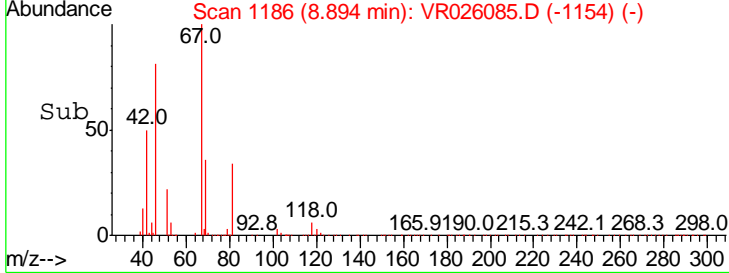
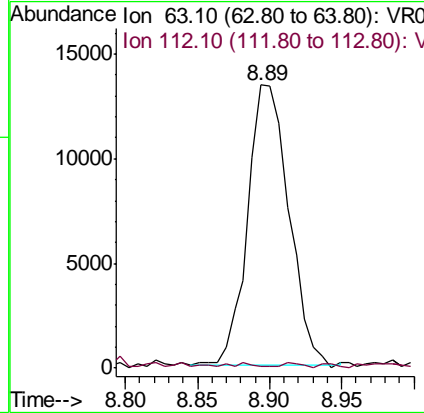
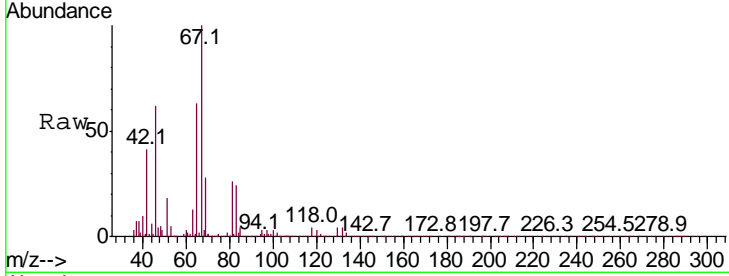




#37
 1,2-Dichloropropane
 Concen: 0.707 ug/L
 RT: 8.89 min Scan# 1186
 Delta R.T. -0.10 min
 Lab File: VR026085.D
 Acq: 15 Oct 2018 22:22

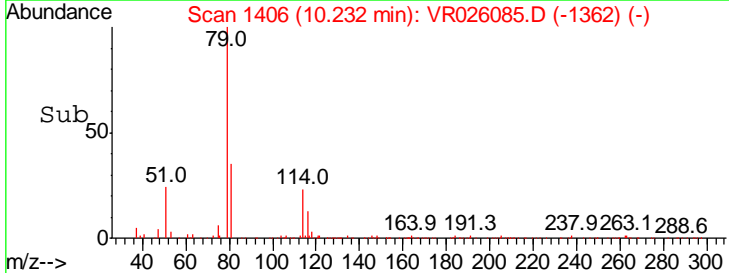
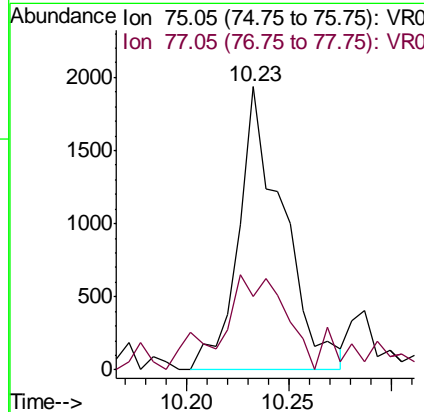
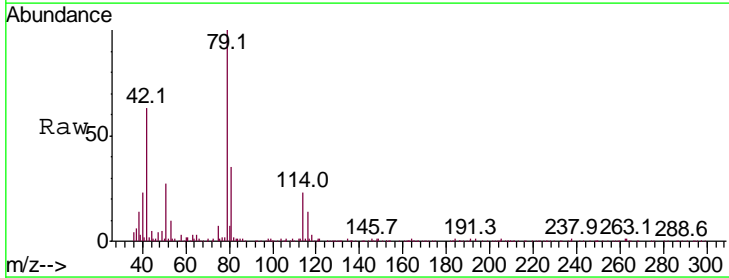
Instrument :
 MSVOA_R
 ClientSampled :

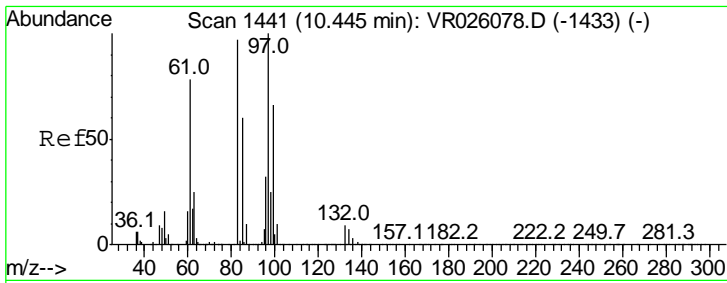
Tgt Ion	Ratio	Lower	Upper
63	100		
112	0.6	2.7	4.1#



#44
 trans-1,3-Dichloropropene
 Concen: 0.097 ug/L
 RT: 10.23 min Scan# 1406
 Delta R.T. -0.03 min
 Lab File: VR026085.D
 Acq: 15 Oct 2018 22:22

Tgt Ion	Ratio	Lower	Upper
75	100		
77	26.1	24.1	44.7

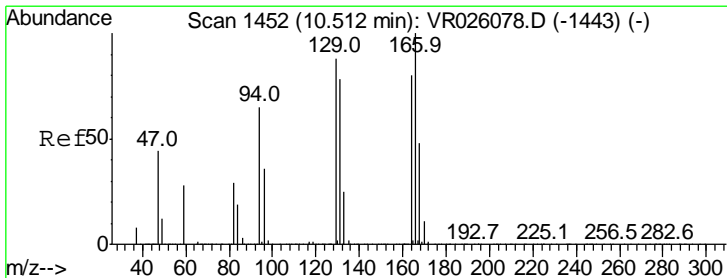
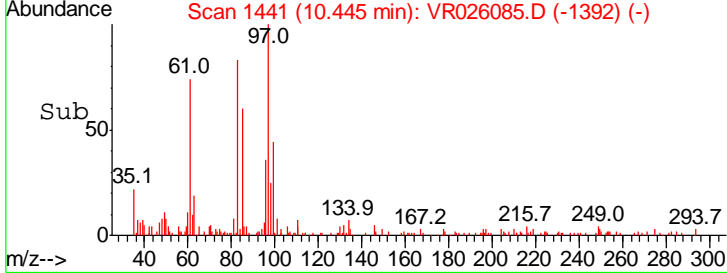
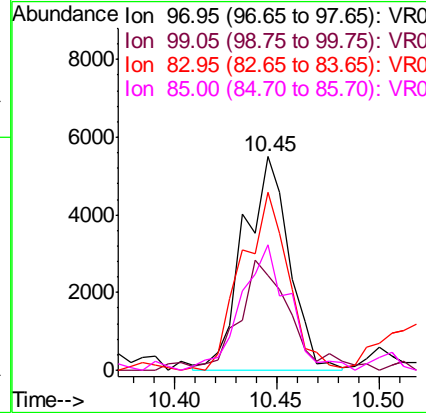
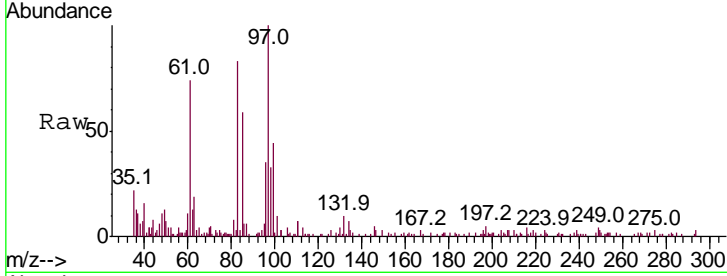




#45
 1,1,2-Trichloroethane
 Concen: 0.541 ug/L
 RT: 10.45 min Scan# 1441
 Delta R.T. 0.00 min
 Lab File: VR026085.D
 Acq: 15 Oct 2018 22:22

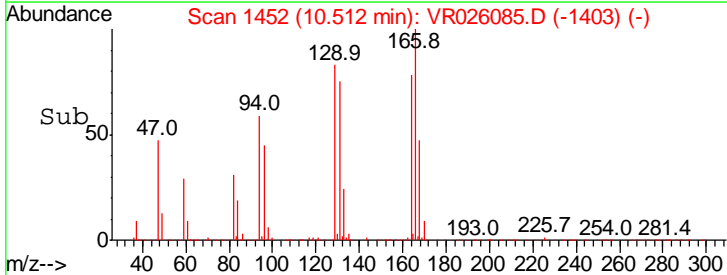
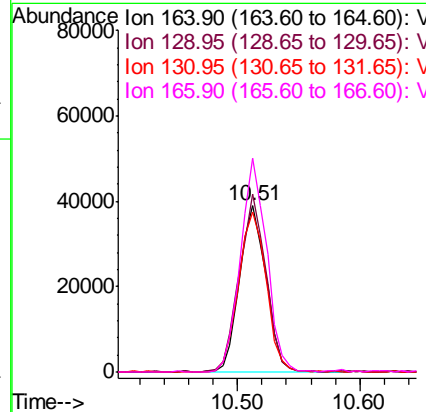
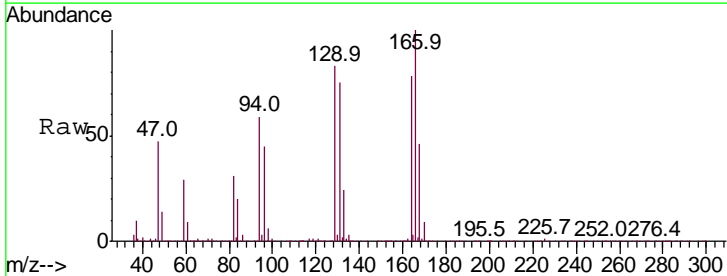
Instrument : MSVOA_R
 ClientSampled :

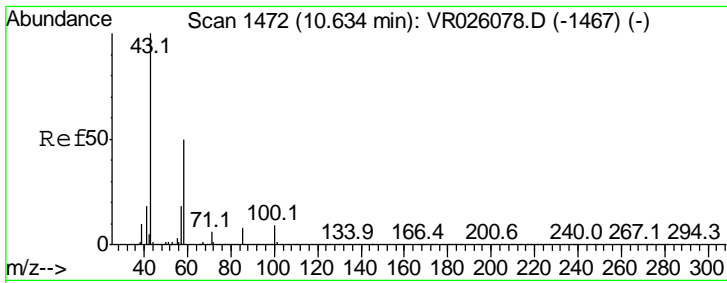
Tgt Ion	Resp	Lower	Upper
97	100		
99	44.3	42.8	79.4
83	83.1	61.9	114.9
85	58.7	39.3	72.9



#47
 Tetrachloroethene
 Concen: 1.804 ug/L
 RT: 10.51 min Scan# 1452
 Delta R.T. 0.00 min
 Lab File: VR026085.D
 Acq: 15 Oct 2018 22:22

Tgt Ion	Resp	Lower	Upper
164	100		
129	107.3	70.3	130.5
131	96.7	67.3	125.1
166	128.8	86.1	159.9



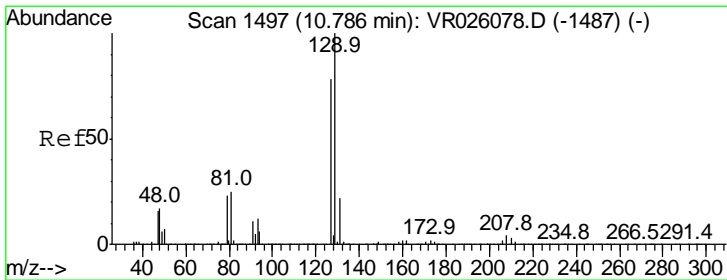
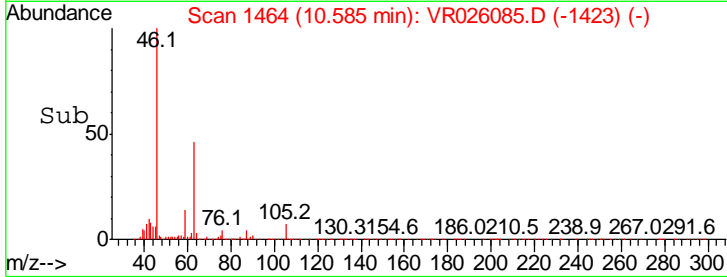
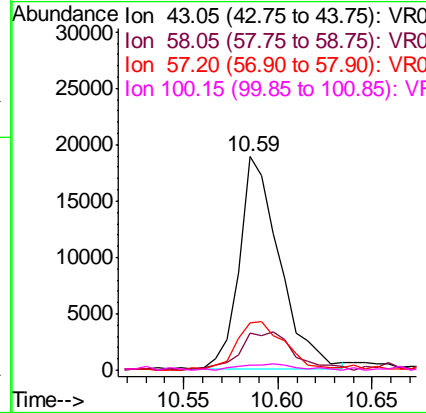
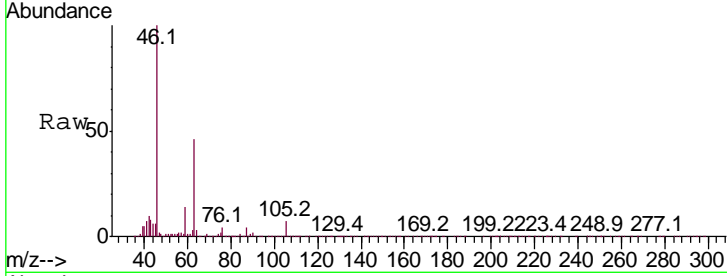


#48
 2-Hexanone
 Concen: 3.715 ug/L
 RT: 10.59 min Scan# 1464
 Delta R.T. -0.05 min
 Lab File: VR026085.D
 Acq: 15 Oct 2018 22:22

Instrument : MSVOA_R
 ClientSampled :

Tgt Ion: 43 Resp: 27806

Ion	Ratio	Lower	Upper
43	100		
58	24.4	39.6	59.4#
57	27.5	14.0	21.0#
100	4.2	7.0	10.6#



#49
 Dibromochloromethane
 Concen: 2.806 ug/L
 RT: 10.51 min Scan# 1452
 Delta R.T. -0.27 min
 Lab File: VR026085.D
 Acq: 15 Oct 2018 22:22

Tgt Ion: 129 Resp: 49981

Ion	Ratio	Lower	Upper
129	100		
127	0.5	55.0	102.2#

