

Data Path : Z:\VOASRV\HPCHEM1\MSVOA R\DATA\VR101518\
 Data File : VR026091.D
 Acq On : 16 Oct 2018 1:42
 Operator : SY/MD
 Sample : J5379-12
 Misc : 25mL/MSVOA R/WATER
 ALS Vial : 24 Sample Multiplier: 1

Instrument :
 MSVOA_R
 ClientSampleId :

Quant Time: Oct 16 08:26:25 2018
 Quant Method : Z:\VOASRV\HPCHEM1\MSVOA_R\METHODS\SOMRTR101518WMA.M
 Quant Title : TRACE VOA SOM01.0
 QLast Update : Tue Oct 16 08:21:47 2018
 Response via : Initial Calibration

Internal Standards	R.T.	QIon	Response	Conc	Units	Dev(Min)
1) 1,4-Difluorobenzene	8.46	114	546573	5.00	ug/L	0.00
28) Chlorobenzene-d5	11.29	117	460609	5.00	ug/L	0.00
60) 1,4-Dichlorobenzene-d4	13.23	152	144022	5.00	ug/L	0.00

System Monitoring Compounds

4) Vinyl Chloride-d3	2.15	65	241829	5.06	ug/L	0.00
Spiked Amount	5.000	Range	40 - 130	Recovery	=	101.20%
7) Chloroethane-d5	2.63	69	213453	5.19	ug/L	0.00
Spiked Amount	5.000	Range	65 - 130	Recovery	=	103.80%
11) 1,1-Dichloroethene-d2	3.61	63	438968	3.74	ug/L	-0.02
Spiked Amount	5.000	Range	60 - 125	Recovery	=	74.80%
20) 2-Butanone-d5	6.59	46	218455	55.63	ug/L	0.00
Spiked Amount	50.000	Range	40 - 130	Recovery	=	111.26%
24) Chloroform-d	7.20	84	366801	4.82	ug/L	0.00
Spiked Amount	5.000	Range	70 - 125	Recovery	=	96.40%
26) 1,2-Dichloroethane-d4	7.89	65	156921	4.96	ug/L	0.00
Spiked Amount	5.000	Range	70 - 130	Recovery	=	99.20%
32) Benzene-d6	7.85	84	715985	4.84	ug/L	0.00
Spiked Amount	5.000	Range	70 - 125	Recovery	=	96.80%
36) 1,2-Dichloropropane-d6	8.90	67	203925	5.34	ug/L	0.00
Spiked Amount	5.000	Range	60 - 140	Recovery	=	106.80%
41) Toluene-d8	9.97	98	681440	4.88	ug/L	0.00
Spiked Amount	5.000	Range	70 - 130	Recovery	=	97.60%
43) trans-1,3-Dichloropropene-	10.24	79	45976	4.59	ug/L	0.00
Spiked Amount	5.000	Range	55 - 130	Recovery	=	91.80%
46) 2-Hexanone-d5	10.59	63	173858	60.07	ug/L	0.00
Spiked Amount	50.000	Range	45 - 130	Recovery	=	120.14%
57) 1,1,2,2-Tetrachloroethane-	12.36	84	74896	4.99	ug/L	0.00
Spiked Amount	5.000	Range	65 - 120	Recovery	=	99.80%
64) 1,2-Dichlorobenzene-d4	13.51	152	120284	5.28	ug/L	0.00
Spiked Amount	5.000	Range	80 - 120	Recovery	=	105.60%

Target Compounds

Target Compounds	R.T.	QIon	Response	Conc	Units	Ovalue
3) Chloromethane	2.01	50	11895	0.204	ug/L #	81
5) Vinyl chloride	2.16	62	3726	0.064	ug/L #	38
8) Chloroethane	2.66	64	8500	0.236	ug/L	98
12) 1,1-Dichloroethene	3.63	96	8485	0.160	ug/L #	1
13) Acetone	3.70	43	14708	3.623	ug/L	98
16) Methylene chloride	4.41	84	7311	0.152	ug/L	83
18) trans-1,2-Dichloroethene	4.88	96	47576	1.184	ug/L	94
19) 1,1-Dichloroethane	5.69	63	109646	1.453	ug/L	97
22) cis-1,2-Dichloroethene	6.67	96	15867958	417.340	ug/L #	69
25) Chloroform	7.23	83	67093	0.911	ug/L	96
27) 1,2-Dichloroethane	7.99	62	6007	0.167	ug/L #	88
29) 1,1,1-Trichloroethane	7.43	97	57920	0.920	ug/L	99
33) Benzene	7.91	78	22844	0.132	ug/L	100
34) Trichloroethene	8.71	95	13963883	315.663	ug/L	81
35) Methylcyclohexane	8.90	83	49939	0.758	ug/L #	17
37) 1,2-Dichloropropane	8.90	63	25970	0.712	ug/L	98
44) trans-1,3-Dichloropropene	10.24	75	2929	0.100	ug/L #	37

Data Path : Z:\VOASRV\HPCHEM1\MSVOA R\DATA\VR101518\
 Data File : VR026091.D
 Acq On : 16 Oct 2018 1:42
 Operator : SY/MD
 Sample : J5379-12
 Misc : 25mL/MSVOA R/WATER
 ALS Vial : 24 Sample Multiplier: 1

Instrument :
 MSVOA_R
 ClientSampleId :

Quant Time: Oct 16 08:26:25 2018
 Quant Method : Z:\VOASRV\HPCHEM1\MSVOA_R\METHODS\SOMRTR101518WMA.M
 Quant Title : TRACE VOA SOM01.0
 QLast Update : Tue Oct 16 08:21:47 2018
 Response via : Initial Calibration

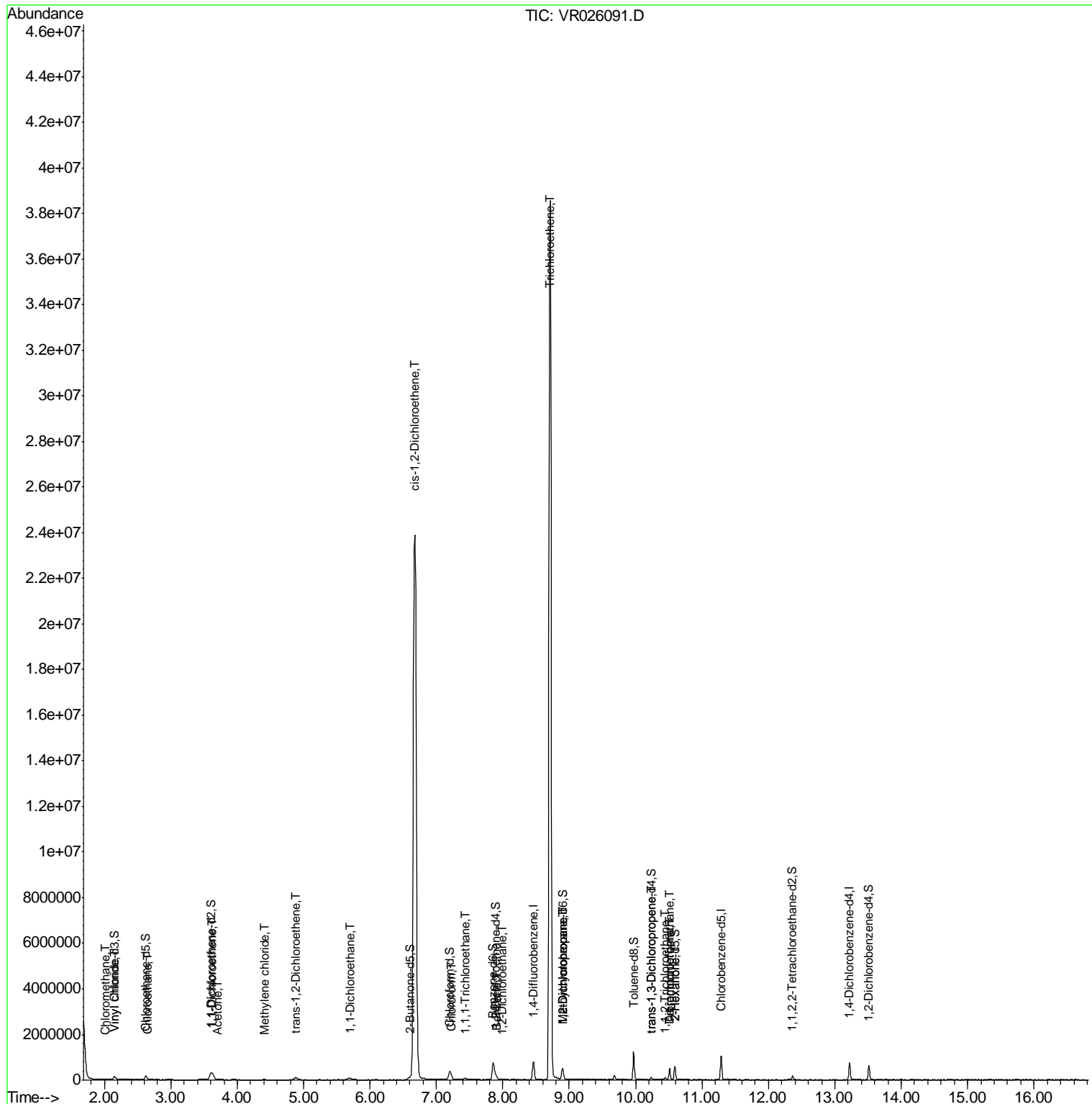
Internal Standards	R.T.	QIon	Response	Conc	Units	Dev(Min)
45) 1,1,2-Trichloroethane	10.45	97	21540	1.400	ug/L	95
47) Tetrachloroethene	10.51	164	86600	2.741	ug/L	93
48) 2-Hexanone	10.59	43	25887	3.559	ug/L #	70
49) Dibromochloromethane	10.51	129	71060	4.105	ug/L #	10

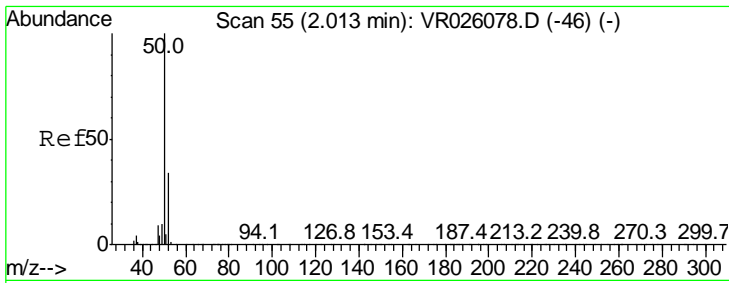
(#) = qualifier out of range (m) = manual integration (+) = signals summed

Data Path : Z:\VOASRV\HPCHEM1\MSVOA R\DATA\VR101518\
 Data File : VR026091.D
 Acq On : 16 Oct 2018 1:42
 Operator : SY/MD
 Sample : J5379-12
 Misc : 25mL/MSVOA R/WATER
 ALS Vial : 24 Sample Multiplier: 1

Instrument :
 MSVOA_R
 ClientSampled :

Quant Time: Oct 16 08:26:25 2018
 Quant Method : Z:\VOASRV\HPCHEM1\MSVOA_R\METHODS\SOMRTR101518WMA.M
 Quant Title : TRACE VOA SOM01.0
 QLast Update : Tue Oct 16 08:21:47 2018
 Response via : Initial Calibration

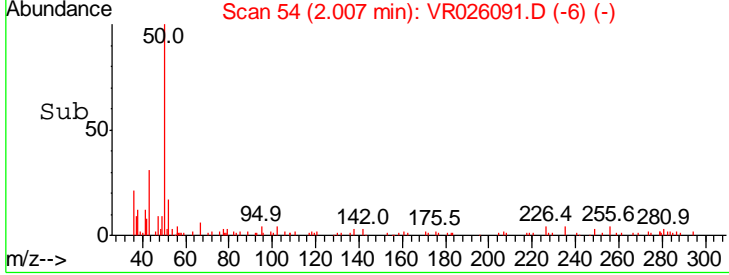
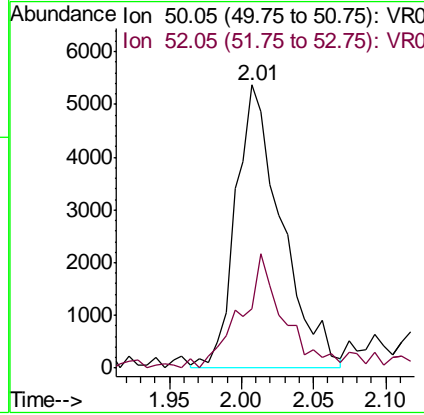
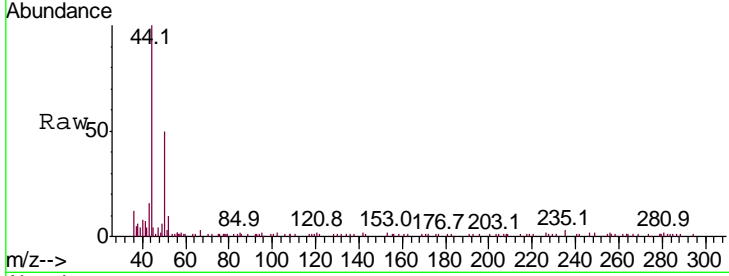




#3
 Chloromethane
 Concen: 0.204 ug/L
 RT: 2.01 min Scan# 54
 Delta R.T. -0.01 min
 Lab File: VR026091.D
 Acq: 16 Oct 2018 1:42

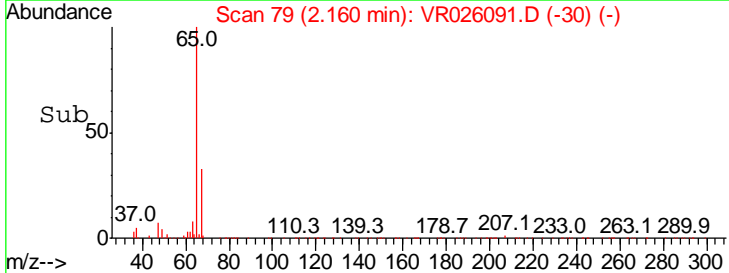
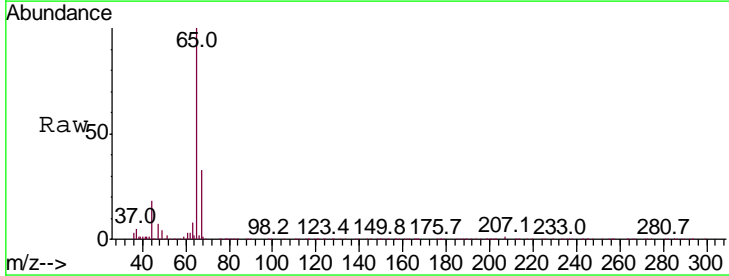
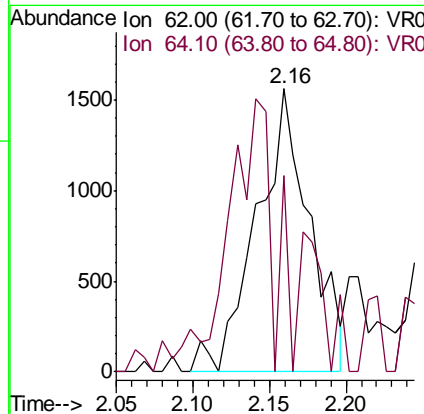
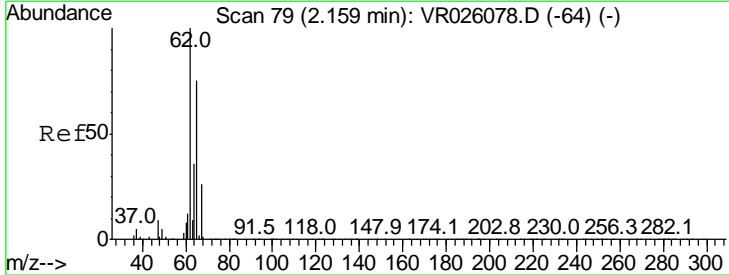
Instrument :
 MSVOA_R
 ClientSampled :

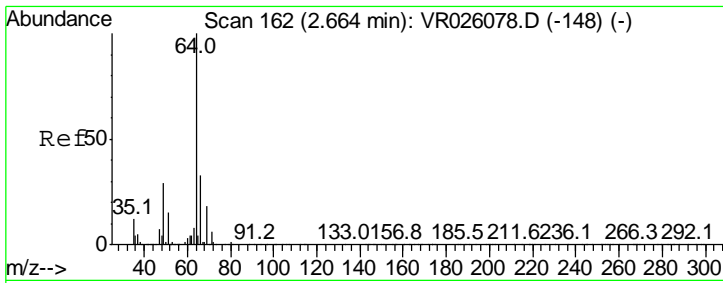
Tgt Ion	Resp	Lower	Upper
50	11895		
52	21.0	22.0	40.8#



#5
 Vinyl chloride
 Concen: 0.064 ug/L
 RT: 2.16 min Scan# 79
 Delta R.T. 0.00 min
 Lab File: VR026091.D
 Acq: 16 Oct 2018 1:42

Tgt Ion	Resp	Lower	Upper
62	3726		
64	69.5	23.9	44.3#

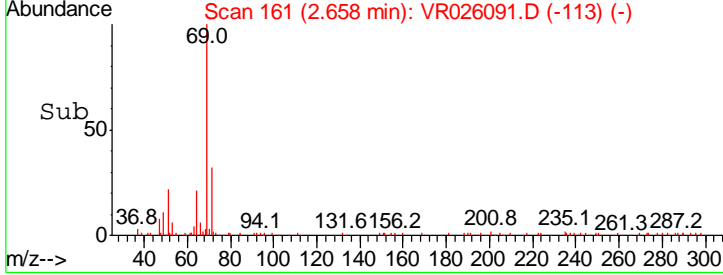
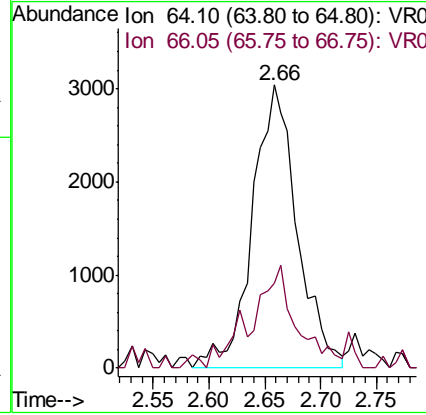
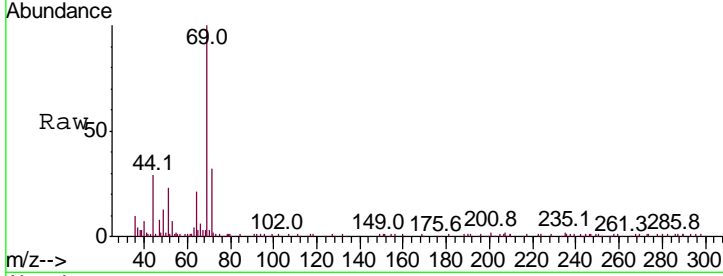




#8
 Chloroethane
 Concen: 0.236 ug/L
 RT: 2.66 min Scan# 161
 Delta R.T. -0.01 min
 Lab File: VR026091.D
 Acq: 16 Oct 2018 1:42

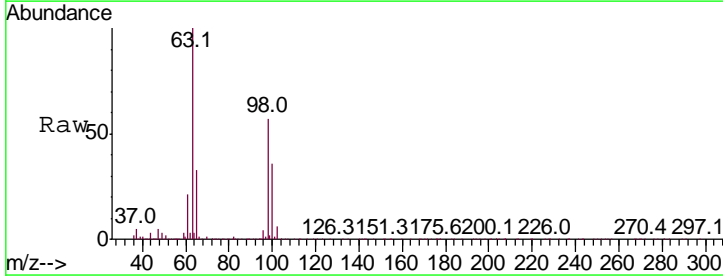
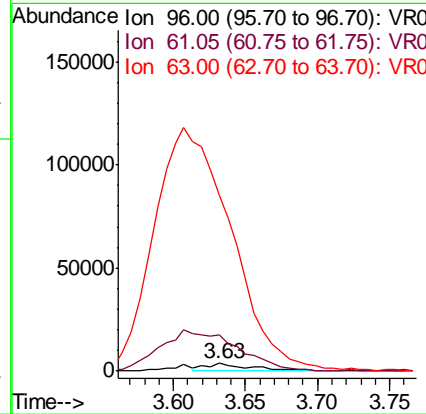
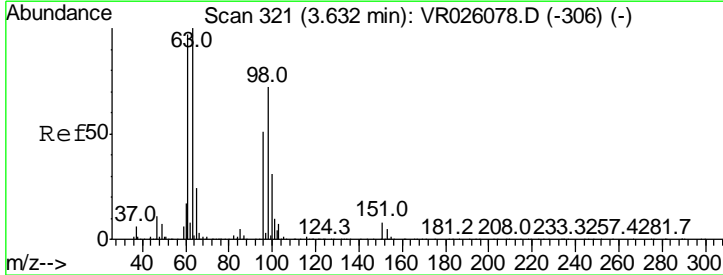
Instrument :
 MSVOA_R
 ClientSampled :

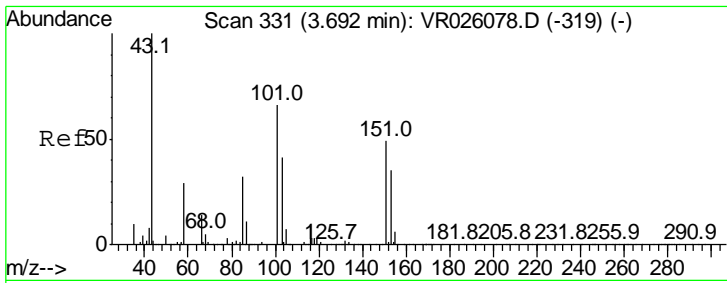
Tgt Ion	Resp	Lower	Upper
64	100		
66	30.2	22.0	40.8



#12
 1,1-Dichloroethene
 Concen: 0.160 ug/L
 RT: 3.63 min Scan# 321
 Delta R.T. 0.00 min
 Lab File: VR026091.D
 Acq: 16 Oct 2018 1:42

Tgt Ion	Resp	Lower	Upper
96	100		
61	479.9	126.7	235.3#
63	2325.2	125.0	232.2#

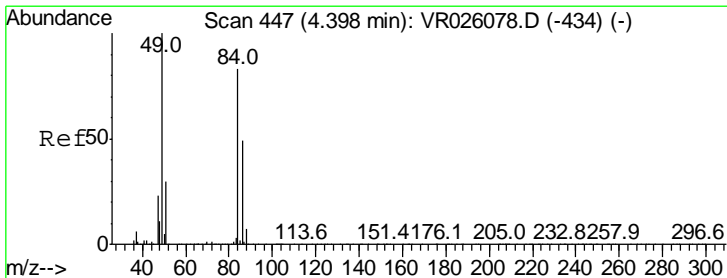
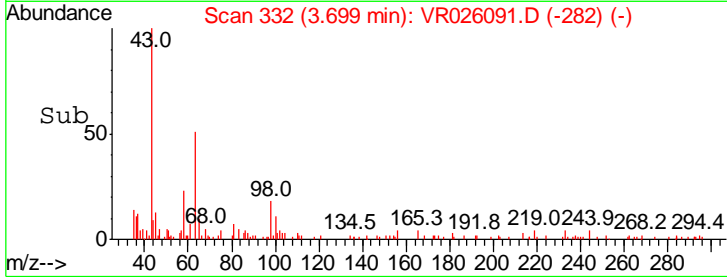
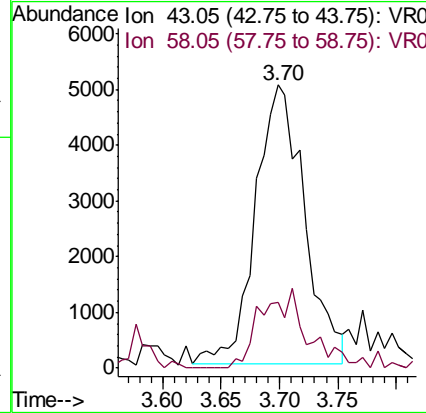
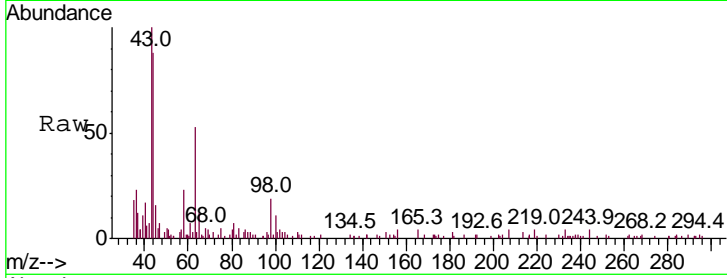




#13
 Acetone
 Concen: 3.623 ug/L
 RT: 3.70 min Scan# 332
 Delta R.T. 0.01 min
 Lab File: VR026091.D
 Acq: 16 Oct 2018 1:42

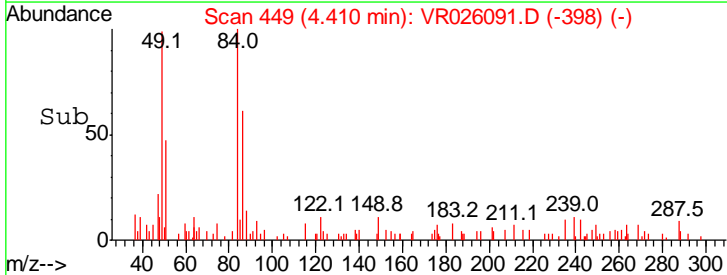
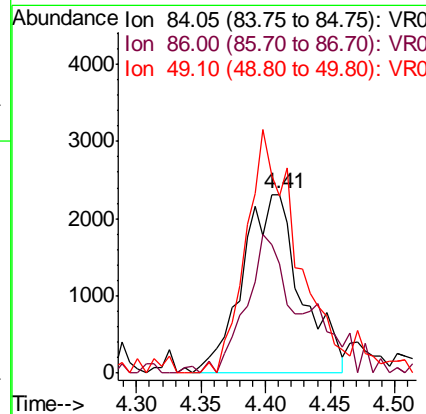
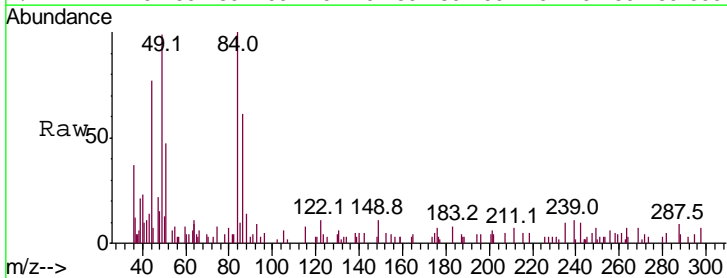
Instrument :
 MSVOA_R
 ClientSampled :

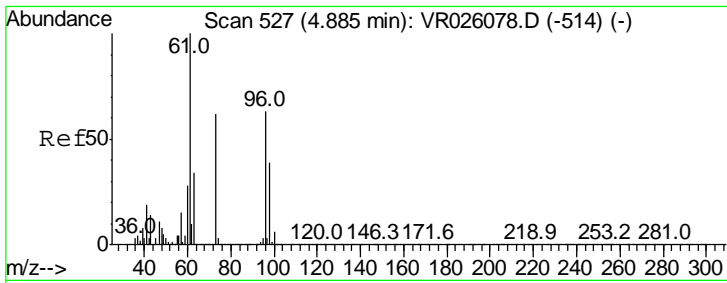
Tgt Ion: 43 Resp: 14708
 Ion Ratio Lower Upper
 43 100
 58 26.6 0.0 55.4



#16
 Methylene chloride
 Concen: 0.152 ug/L
 RT: 4.41 min Scan# 449
 Delta R.T. 0.01 min
 Lab File: VR026091.D
 Acq: 16 Oct 2018 1:42

Tgt Ion: 84 Resp: 7311
 Ion Ratio Lower Upper
 84 100
 86 60.8 43.0 79.8
 49 99.3 89.1 165.5

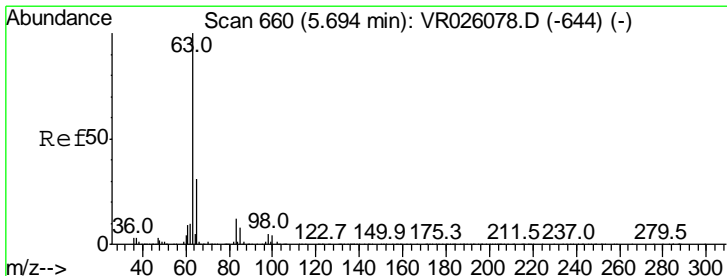
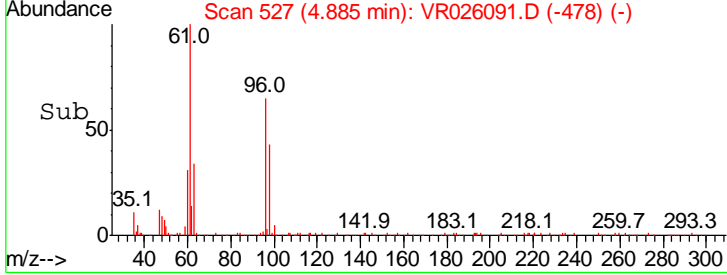
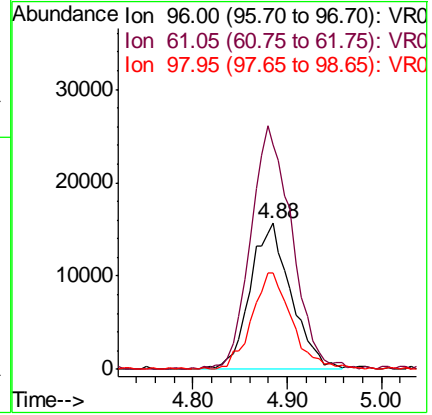
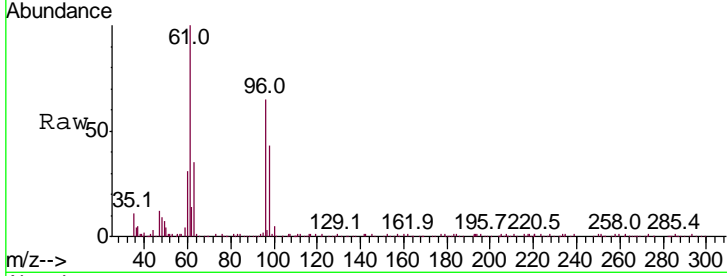




#18
 trans-1,2-Dichloroethene
 Concen: 1.184 ug/L
 RT: 4.88 min Scan# 527
 Delta R.T. 0.00 min
 Lab File: VR026091.D
 Acq: 16 Oct 2018 1:42

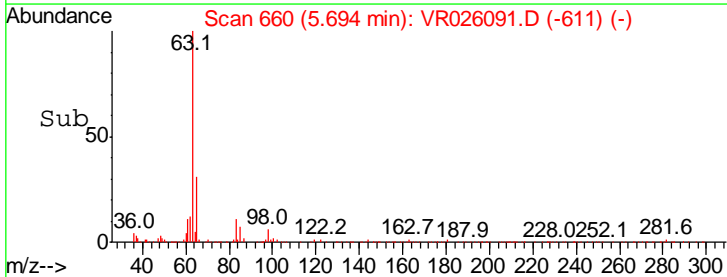
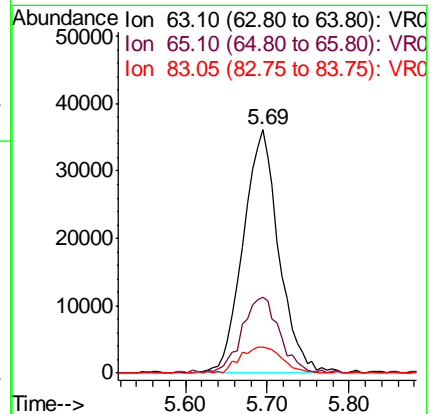
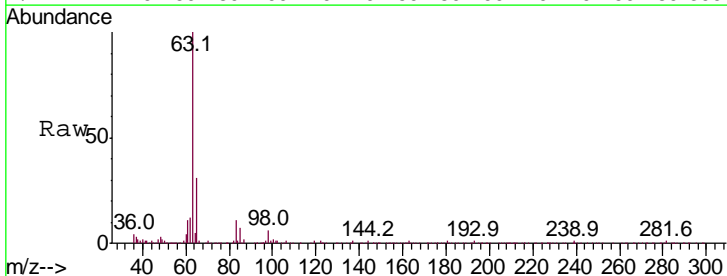
Instrument :
 MSVOA_R
 ClientSampled :

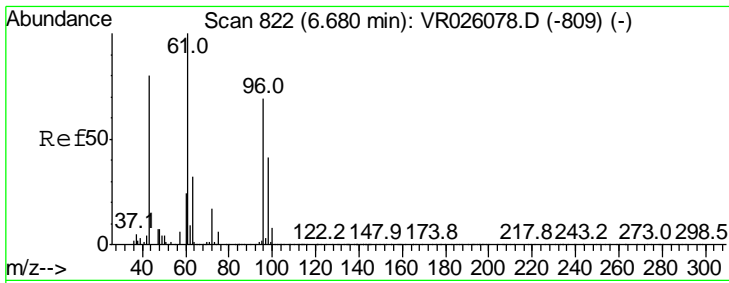
Tgt Ion	Resp	Lower	Upper
96	47576		
96	100		
61	153.2	111.4	206.8
98	65.8	41.4	77.0



#19
 1,1-Dichloroethane
 Concen: 1.453 ug/L
 RT: 5.69 min Scan# 660
 Delta R.T. 0.00 min
 Lab File: VR026091.D
 Acq: 16 Oct 2018 1:42

Tgt Ion	Resp	Lower	Upper
63	109646		
63	100		
65	31.3	21.2	39.4
83	10.8	9.2	17.2



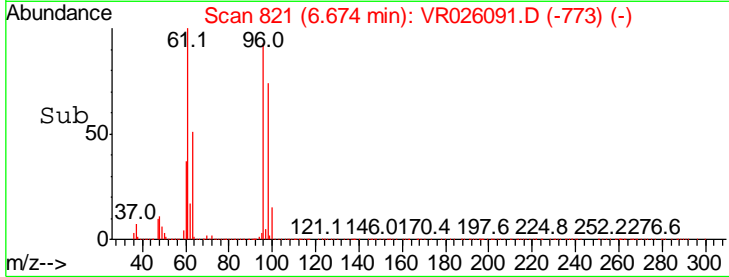
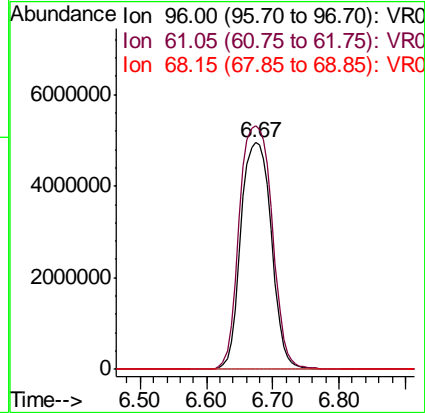
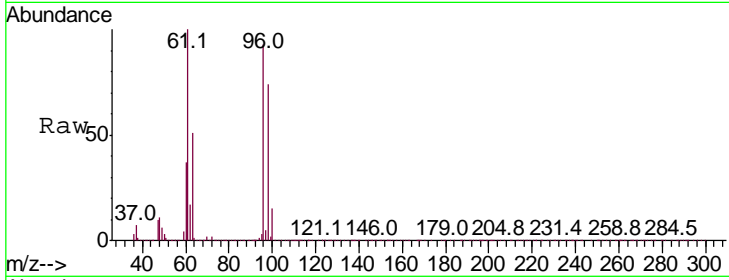


#22
 cis-1,2-Dichloroethene
 Concen: 417.340 ug/L
 RT: 6.67 min Scan# 821
 Delta R.T. -0.01 min
 Lab File: VR026091.D
 Acq: 16 Oct 2018 1:42

Instrument :
 MSVOA_R
 ClientSampled :

Tgt Ion: 96 Resp:15867958

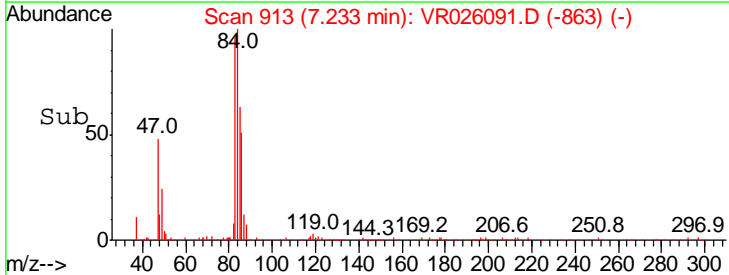
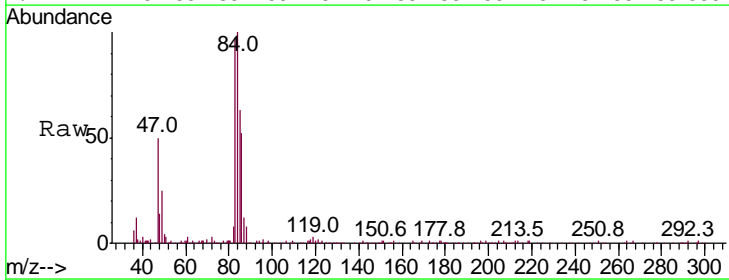
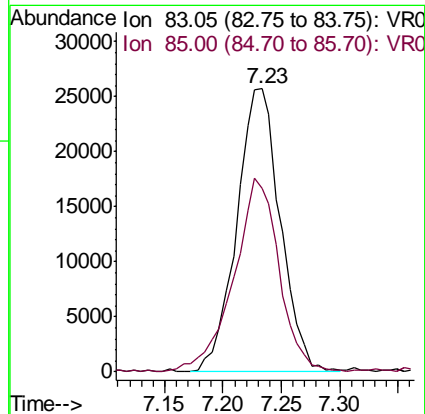
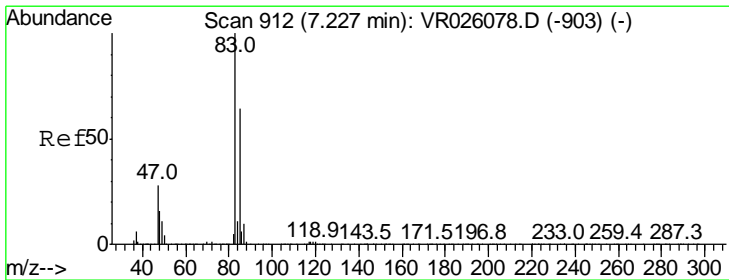
Ion	Ratio	Lower	Upper
96	100		
61	107.3	101.8	189.0
68	0.0	0.1	0.3#

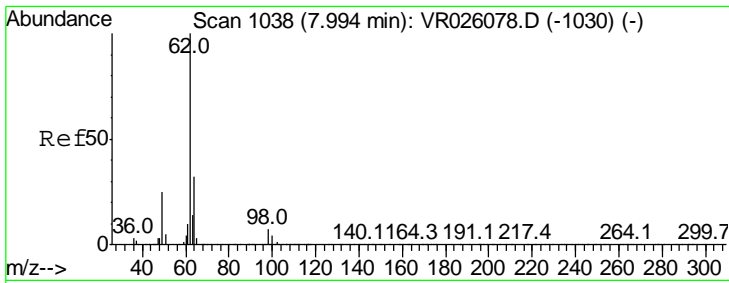


#25
 Chloroform
 Concen: 0.911 ug/L
 RT: 7.23 min Scan# 913
 Delta R.T. 0.01 min
 Lab File: VR026091.D
 Acq: 16 Oct 2018 1:42

Tgt Ion: 83 Resp: 67093

Ion	Ratio	Lower	Upper
83	100		
85	64.9	43.5	80.7

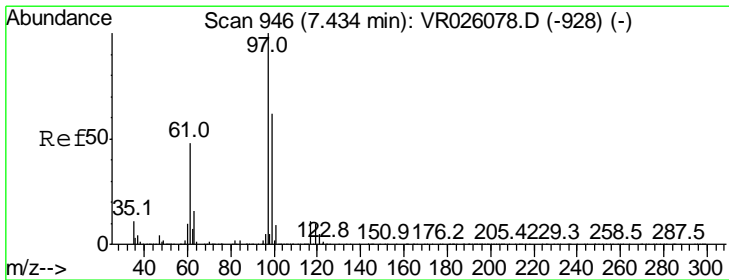
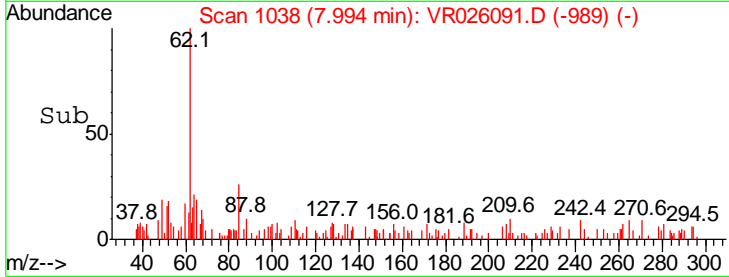
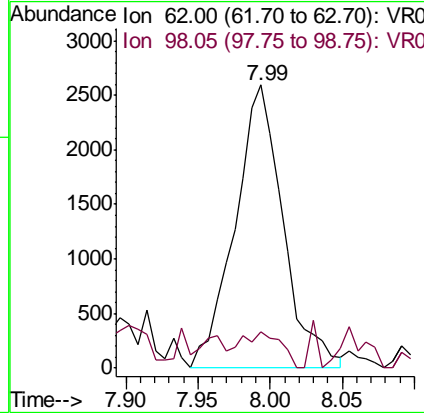
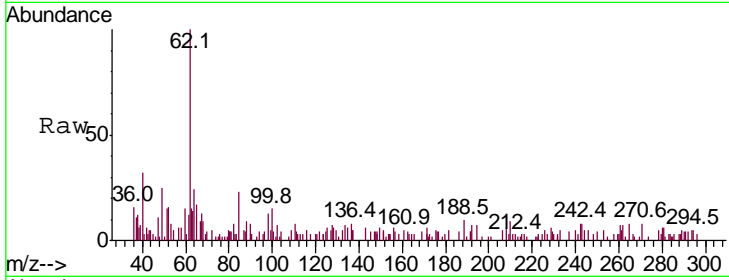




#27
 1,2-Dichloroethane
 Concen: 0.167 ug/L
 RT: 7.99 min Scan# 1038
 Delta R.T. 0.00 min
 Lab File: VR026091.D
 Acq: 16 Oct 2018 1:42

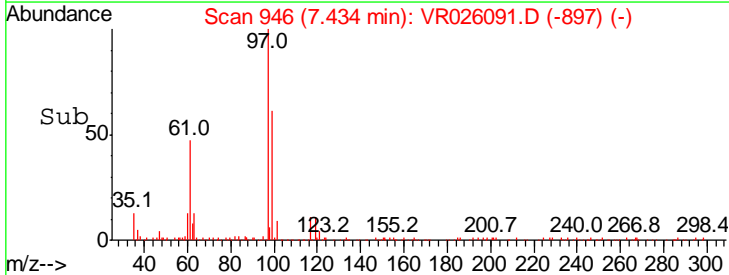
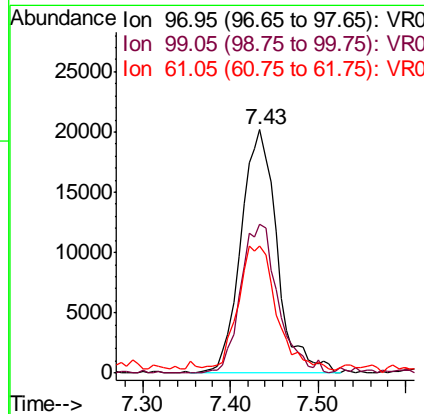
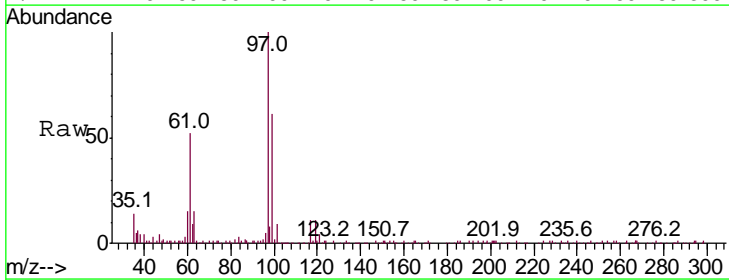
Instrument : MSVOA_R
 ClientSampled :

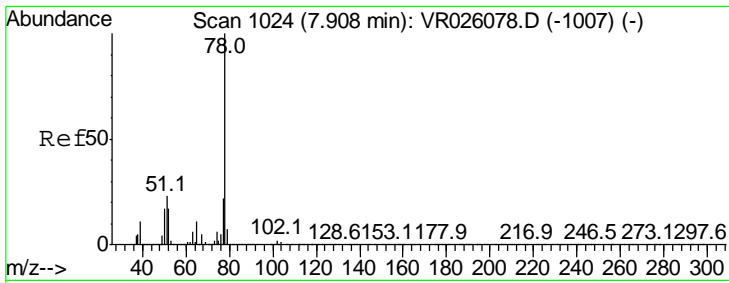
Tgt Ion	Ratio	Lower	Upper
62	100		
98	11.0	5.6	8.4#



#29
 1,1,1-Trichloroethane
 Concen: 0.920 ug/L
 RT: 7.43 min Scan# 946
 Delta R.T. 0.00 min
 Lab File: VR026091.D
 Acq: 16 Oct 2018 1:42

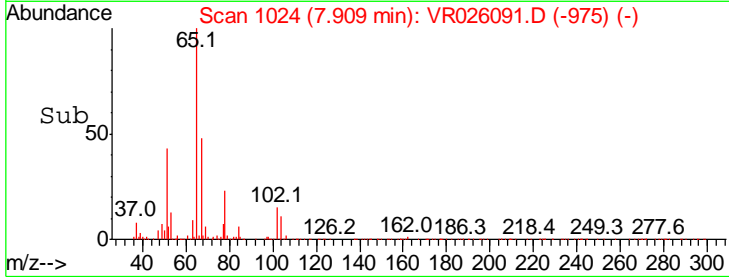
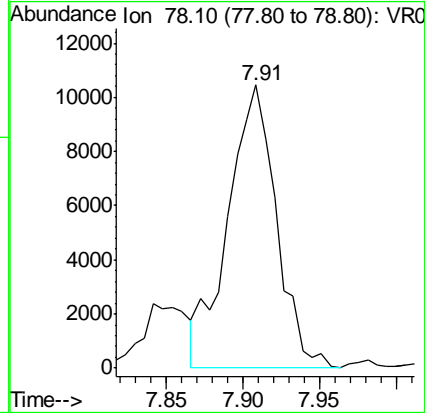
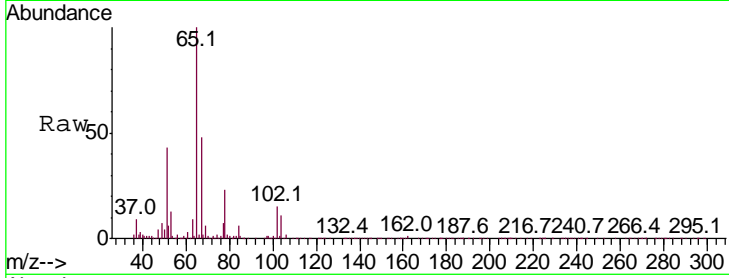
Tgt Ion	Ratio	Lower	Upper
97	100		
99	62.9	51.1	76.7
61	53.4	42.1	63.1





#33
 Benzene
 Concen: 0.132 ug/L
 RT: 7.91 min Scan# 1024
 Delta R.T. 0.00 min
 Lab File: VR026091.D
 Acq: 16 Oct 2018 1:42
 Tgt Ion: 78 Resp: 22844

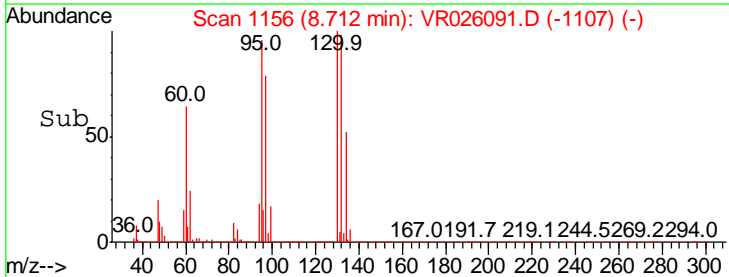
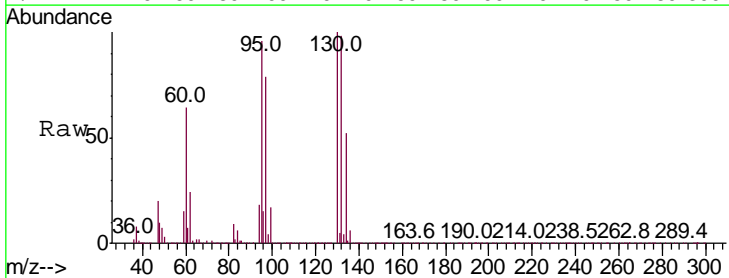
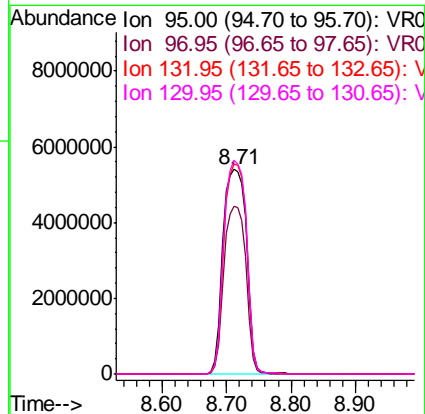
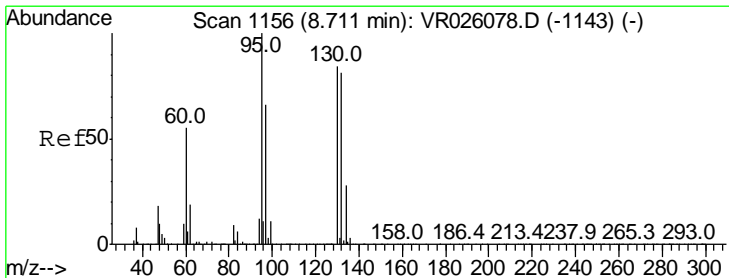
Instrument :
 MSVOA_R
 ClientSampled :

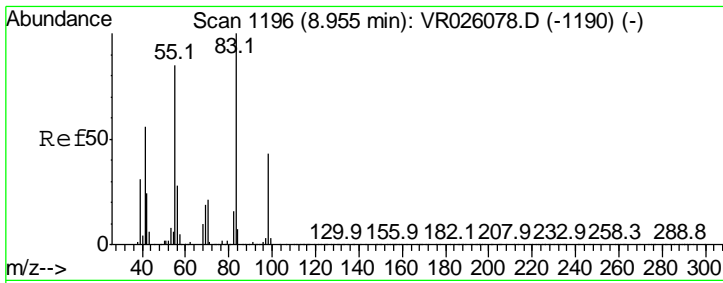


#34
 Trichloroethene
 Concen: 315.663 ug/L
 RT: 8.71 min Scan# 1156
 Delta R.T. 0.00 min
 Lab File: VR026091.D
 Acq: 16 Oct 2018 1:42

Tgt Ion: 95 Resp: 13963883

Ion	Ratio	Lower	Upper
95	100		
97	82.4	45.7	84.9
132	103.0	58.3	108.3
130	104.6	64.0	119.0

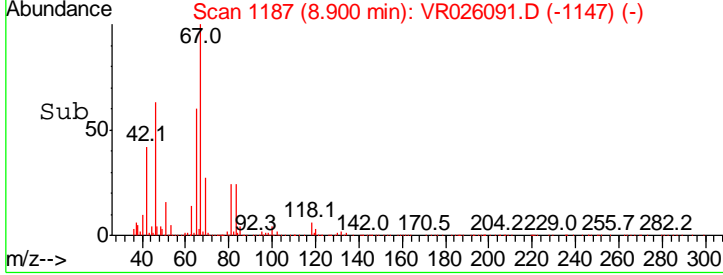
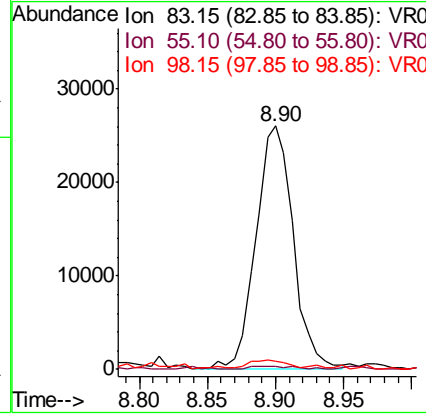
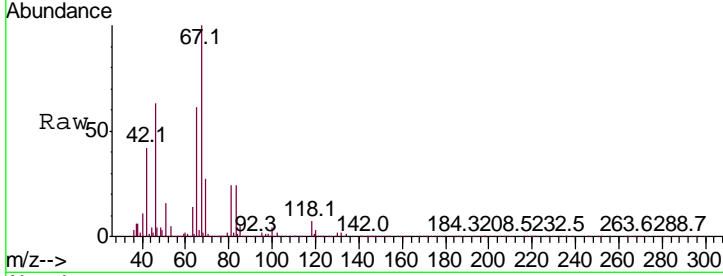




#35
 Methylcyclohexane
 Concen: 0.758 ug/L
 RT: 8.90 min Scan# 1187
 Delta R.T. -0.05 min
 Lab File: VR026091.D
 Acq: 16 Oct 2018 1:42

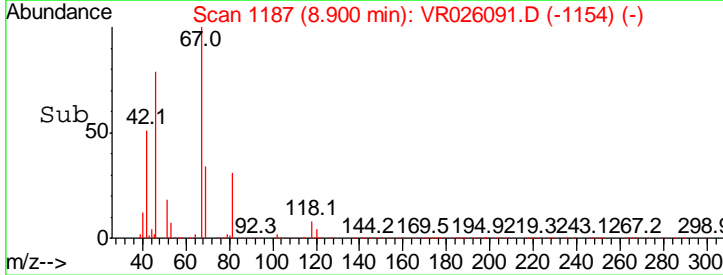
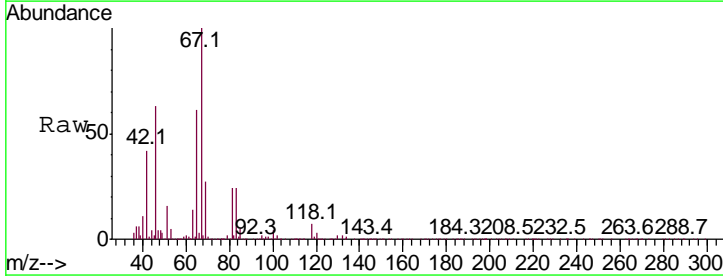
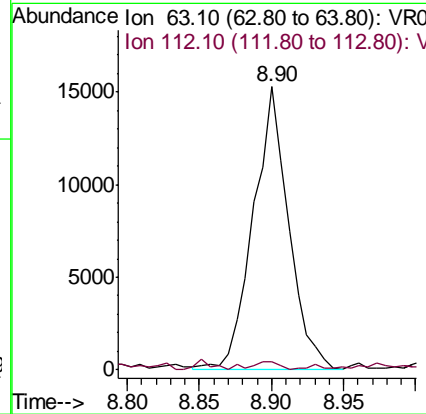
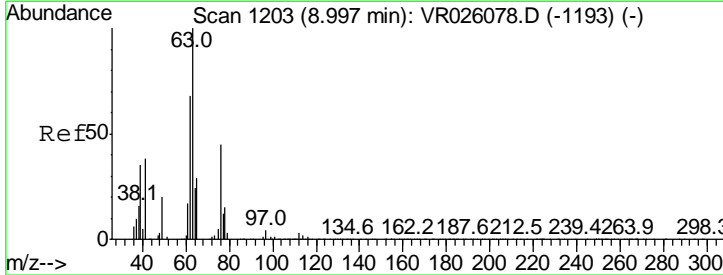
Instrument :
 MSVOA_R
 ClientSampled :

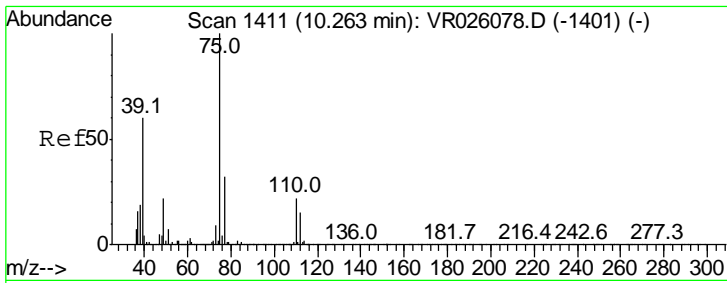
Tgt Ion	Resp	Lower	Upper
83	49939		
83	100		
55	1.8	66.8	100.2#
98	0.0	35.2	52.8#



#37
 1,2-Dichloropropane
 Concen: 0.712 ug/L
 RT: 8.90 min Scan# 1187
 Delta R.T. -0.10 min
 Lab File: VR026091.D
 Acq: 16 Oct 2018 1:42

Tgt Ion	Resp	Lower	Upper
63	25970		
63	100		
112	2.8	2.7	4.1

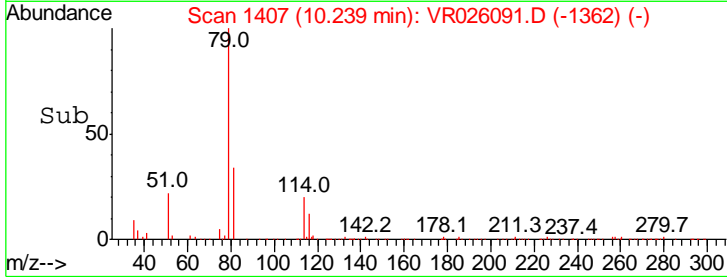
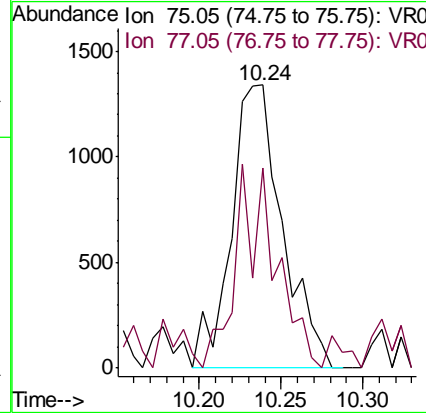
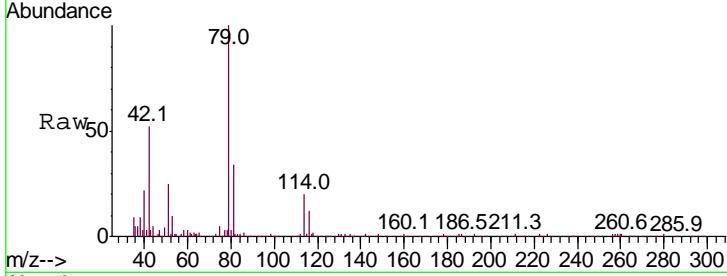




#44
 trans-1,3-Dichloropropene
 Concen: 0.100 ug/L
 RT: 10.24 min Scan# 1407
 Delta R.T. -0.02 min
 Lab File: VR026091.D
 Acq: 16 Oct 2018 1:42

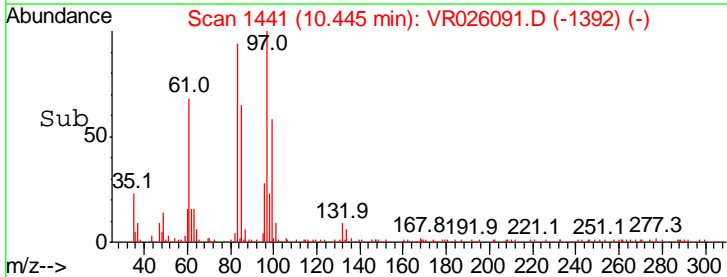
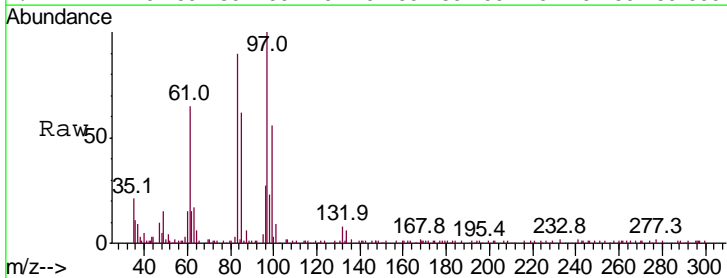
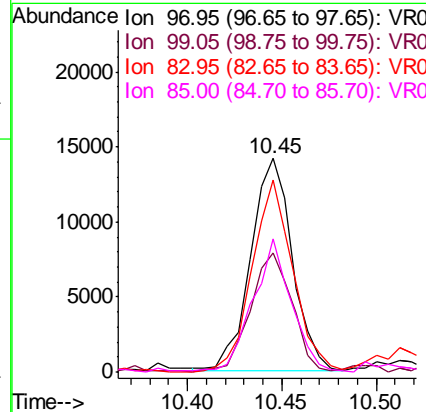
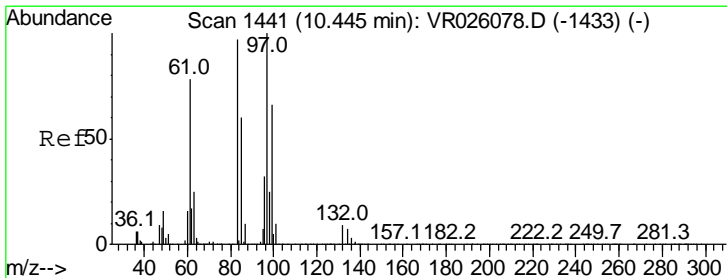
Instrument :
 MSVOA_R
 ClientSampled :

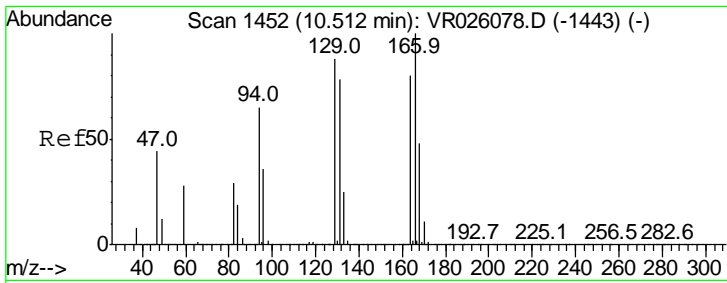
Tgt Ion: 75 Resp: 2929
 Ion Ratio Lower Upper
 75 100
 77 70.8 24.1 44.7#



#45
 1,1,2-Trichloroethane
 Concen: 1.400 ug/L
 RT: 10.45 min Scan# 1441
 Delta R.T. 0.00 min
 Lab File: VR026091.D
 Acq: 16 Oct 2018 1:42

Tgt Ion: 97 Resp: 21540
 Ion Ratio Lower Upper
 97 100
 99 56.0 42.8 79.4
 83 89.9 61.9 114.9
 85 62.2 39.3 72.9

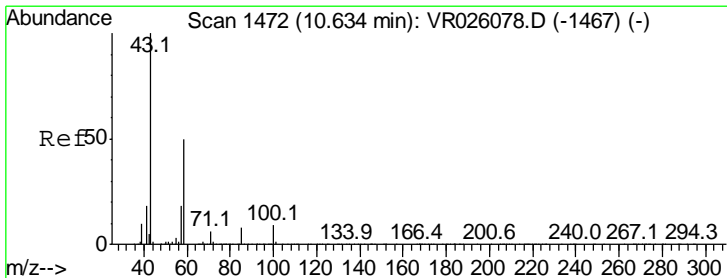
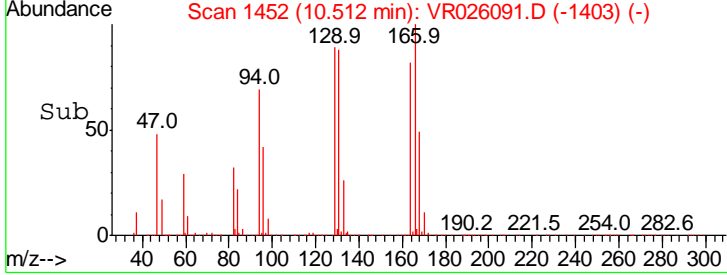
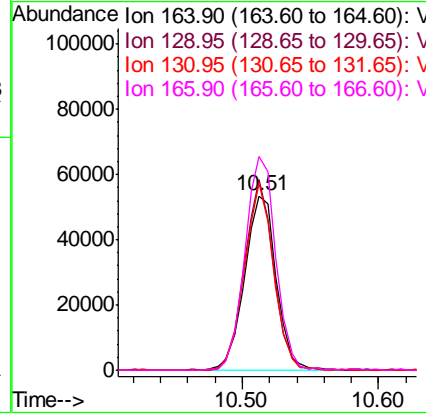
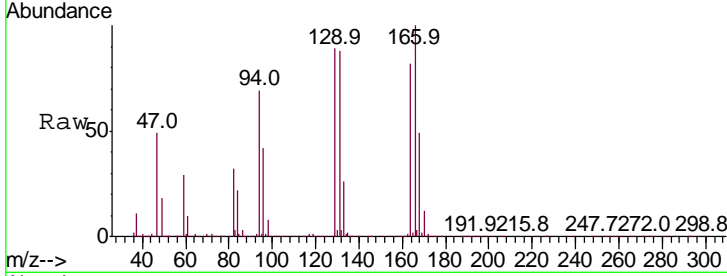




#47
 Tetrachloroethene
 Concen: 2.741 ug/L
 RT: 10.51 min Scan# 1452
 Delta R.T. 0.00 min
 Lab File: VR026091.D
 Acq: 16 Oct 2018 1:42

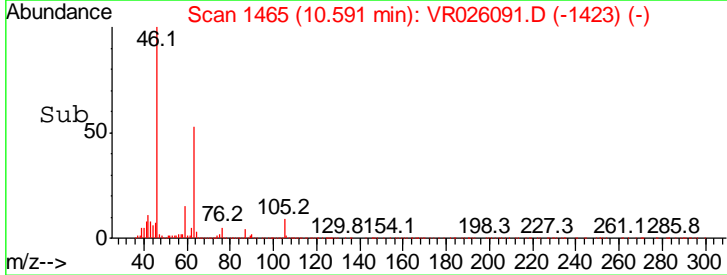
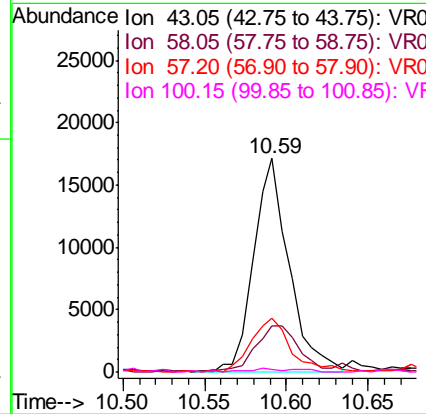
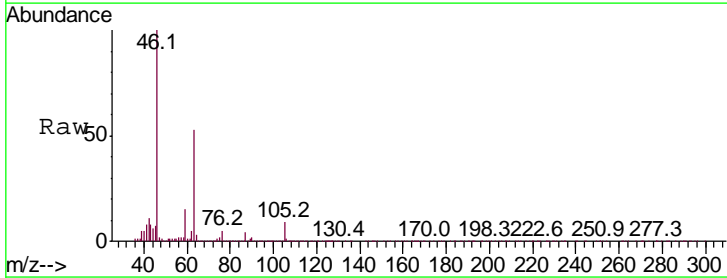
Instrument : MSVOA_R
 ClientSampled :

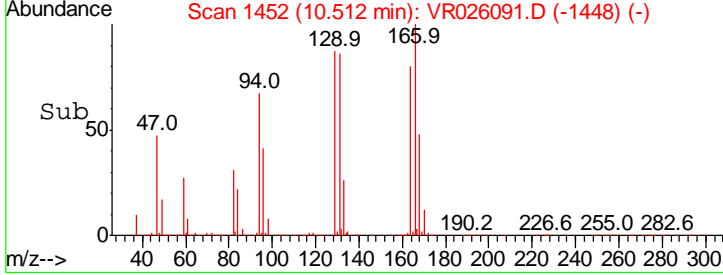
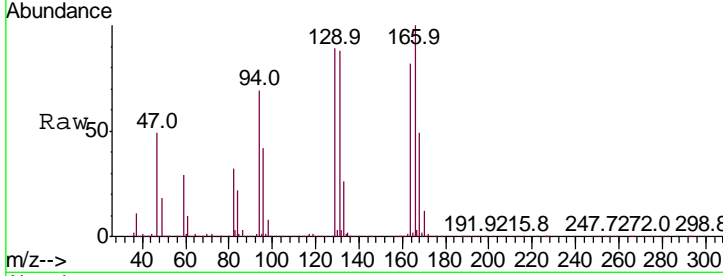
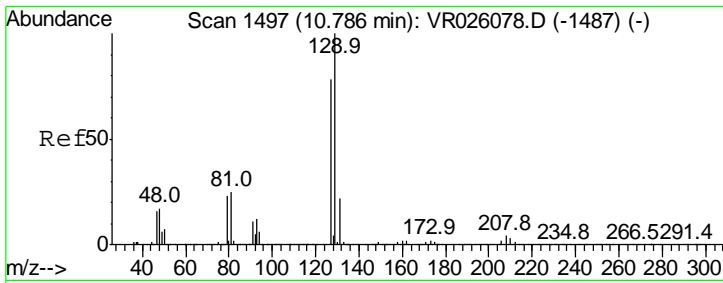
Tgt Ion	Resp	Lower	Upper
164	100		
129	109.7	70.3	130.5
131	107.5	67.3	125.1
166	122.6	86.1	159.9



#48
 2-Hexanone
 Concen: 3.559 ug/L
 RT: 10.59 min Scan# 1465
 Delta R.T. -0.04 min
 Lab File: VR026091.D
 Acq: 16 Oct 2018 1:42

Tgt Ion	Resp	Lower	Upper
43	100		
58	27.0	39.6	59.4#
57	28.8	14.0	21.0#
100	1.4	7.0	10.6#





#49
 Dibromochloromethane
 Concen: 4.105 ug/L
 RT: 10.51 min Scan# 1452
 Delta R.T. -0.27 min
 Lab File: VR026091.D
 Acq: 16 Oct 2018 1:42

Instrument :
 MSVOA_R
 ClientSampled :

Tot Ion	Ratio	Lower	Upper
129	100		
127	0.2	55.0	102.2#

