

Data Path : Z:\VOASRV\HPCHEM1\MSVOA R\DATA\VR110218\
 Data File : VR026163.D
 Acq On : 2 Nov 2018 16:38
 Operator : SY/MD
 Sample : J5802-15
 Misc : 25mL/MSVOA R/WATER
 ALS Vial : 4 Sample Multiplier: 1

Instrument :
 MSVOA_R
 ClientSampleId :
 COBE1

Quant Time: Nov 03 06:00:19 2018
 Quant Method : Z:\VOASRV\HPCHEM1\MSVOA_R\METHODS\SOMRTR101518WMA.M
 Quant Title : TRACE VOA SOM01.0
 QLast Update : Sat Nov 03 06:46:43 2018
 Response via : Initial Calibration

Internal Standards	R.T.	QIon	Response	Conc	Units	Dev(Min)
1) 1,4-Difluorobenzene	8.46	114	691625	5.00	ug/L	0.00
28) Chlorobenzene-d5	11.29	117	582495	5.00	ug/L	0.00
60) 1,4-Dichlorobenzene-d4	13.23	152	201260	5.00	ug/L	0.00

System Monitoring Compounds

4) Vinyl Chloride-d3	2.15	65	143260	2.37	ug/L	-0.02
Spiked Amount	5.000	Range	40 - 130	Recovery	=	47.40%
7) Chloroethane-d5	2.63	69	149317	2.87	ug/L	0.00
Spiked Amount	5.000	Range	65 - 130	Recovery	=	57.40%#
11) 1,1-Dichloroethene-d2	3.63	63	262714	1.77	ug/L	0.00
Spiked Amount	5.000	Range	60 - 125	Recovery	=	35.40%#
20) 2-Butanone-d5	6.59	46	233836	47.06	ug/L	0.00
Spiked Amount	50.000	Range	40 - 130	Recovery	=	94.12%
24) Chloroform-d	7.20	84	335438	3.49	ug/L	0.00
Spiked Amount	5.000	Range	70 - 125	Recovery	=	69.80%#
26) 1,2-Dichloroethane-d4	7.90	65	147482	3.69	ug/L	0.00
Spiked Amount	5.000	Range	70 - 130	Recovery	=	73.80%
32) Benzene-d6	7.85	84	587674	3.14	ug/L	0.00
Spiked Amount	5.000	Range	70 - 125	Recovery	=	62.80%#
36) 1,2-Dichloropropane-d6	8.90	67	176886	3.66	ug/L	0.00
Spiked Amount	5.000	Range	60 - 140	Recovery	=	73.20%
41) Toluene-d8	9.97	98	504988	2.86	ug/L	0.00
Spiked Amount	5.000	Range	70 - 130	Recovery	=	57.20%#
43) trans-1,3-Dichloropropene-	10.24	79	41580	3.28	ug/L	0.00
Spiked Amount	5.000	Range	55 - 130	Recovery	=	65.60%
46) 2-Hexanone-d5	10.59	63	176311	48.17	ug/L	0.00
Spiked Amount	50.000	Range	45 - 130	Recovery	=	96.34%
57) 1,1,2,2-Tetrachloroethane-	12.36	84	78957	4.16	ug/L	0.00
Spiked Amount	5.000	Range	65 - 120	Recovery	=	83.20%
64) 1,2-Dichlorobenzene-d4	13.52	152	120204	3.78	ug/L	0.00
Spiked Amount	5.000	Range	80 - 120	Recovery	=	75.60%#

Target Compounds

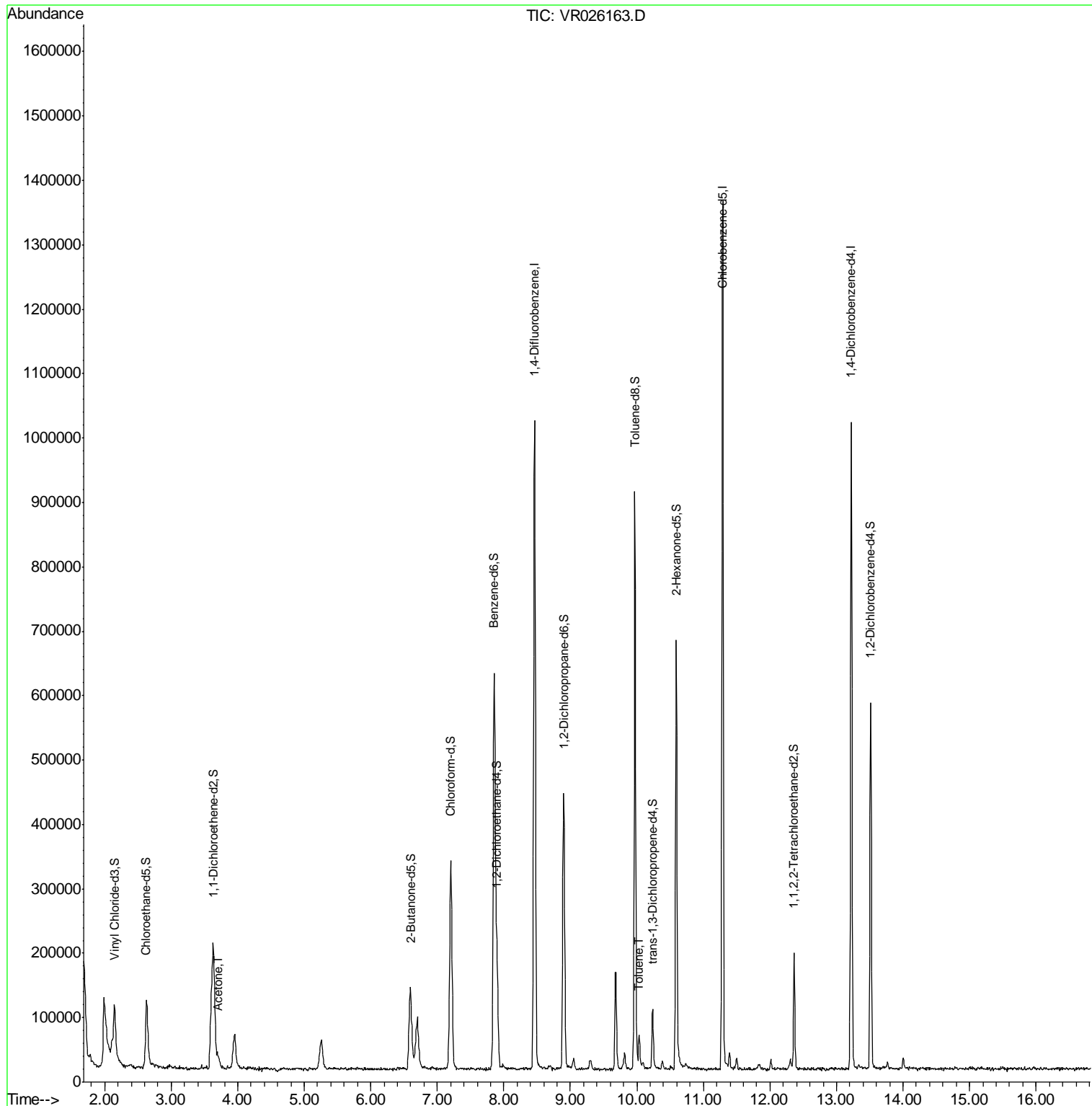
					Ovalue
13) Acetone	3.70	43	22255	4.332	ug/L 98
42) Toluene	10.03	91	30450	0.132	ug/L 99

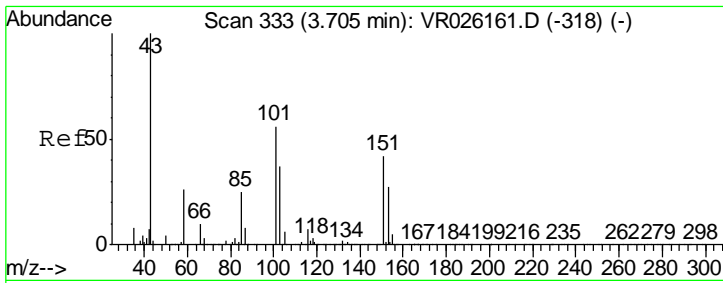
(#) = qualifier out of range (m) = manual integration (+) = signals summed

Data Path : Z:\VOASRV\HPCHEM1\MSVOA R\DATA\VR110218\
 Data File : VR026163.D
 Acq On : 2 Nov 2018 16:38
 Operator : SY/MD
 Sample : J5802-15
 Misc : 25mL/MSVOA R/WATER
 ALS Vial : 4 Sample Multiplier: 1

Instrument :
 MSVOA_R
 ClientSampled :
 COBE1

Quant Time: Nov 03 06:00:19 2018
 Quant Method : Z:\VOASRV\HPCHEM1\MSVOA_R\METHODS\SOMRTR101518WMA.M
 Quant Title : TRACE VOA SOM01.0
 QLast Update : Sat Nov 03 06:46:43 2018
 Response via : Initial Calibration

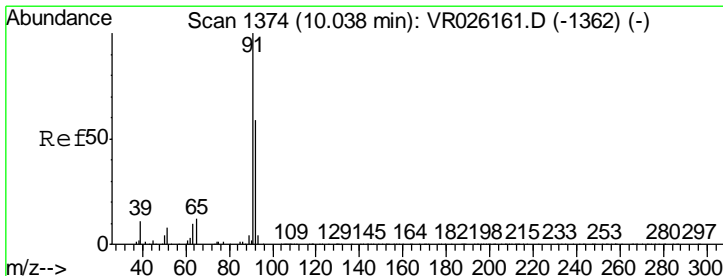
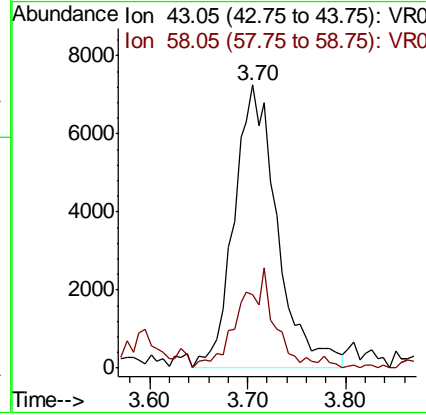
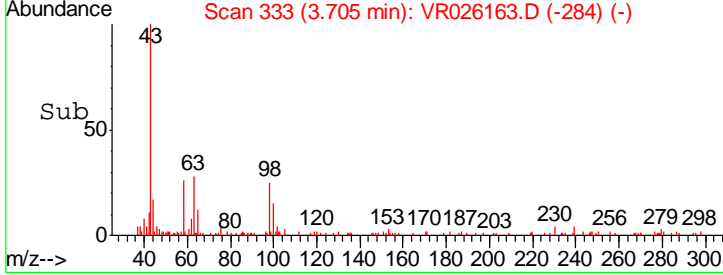
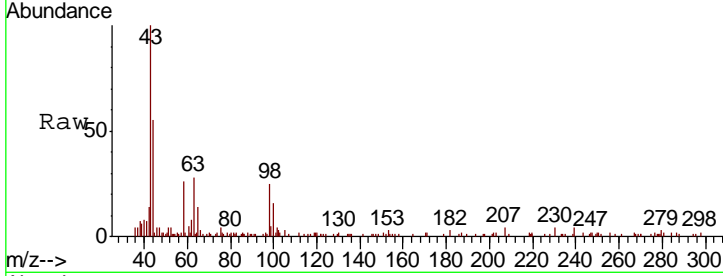




#13
 Acetone
 Concen: 4.332 ug/L
 RT: 3.70 min Scan# 333
 Delta R.T. 0.00 min
 Lab File: VR026163.D
 Acq: 2 Nov 2018 16:38

Instrument :
 MSVOA_R
 ClientSampleID :
 COBE1

Tgt Ion: 43 Resp: 22255
 Ion Ratio Lower Upper
 43 100
 58 28.7 0.0 55.4



#42
 Toluene
 Concen: 0.132 ug/L
 RT: 10.03 min Scan# 1373
 Delta R.T. -0.01 min
 Lab File: VR026163.D
 Acq: 2 Nov 2018 16:38

Tgt Ion: 91 Resp: 30450
 Ion Ratio Lower Upper
 91 100
 92 57.4 40.8 75.8

