

Data Path : Z:\voasrv\HPCHEM1\MSVOA R\Data\VR110618\
 Data File : VR026188.D
 Acq On : 6 Nov 2018 12:19
 Operator : SY/MD
 Sample : J5801-02
 Misc : 25mL/MSVOA R/WATER
 ALS Vial : 4 Sample Multiplier: 1

Instrument :
 MSVOA_R
 ClientSampleId :
 F9D01

Integration Parameters: rteint.p
 Integrator: RTE
 Smoothing : ON
 Sampling : 1
 Start Thrs: 0.2
 Stop Thrs : 0

Filtering: 5
 Min Area: 3 % of largest Peak
 Max Peaks: 100
 Peak Location: TOP

If leading or trailing edge < 100 prefer < Baseline drop else tangent >
 Peak separation: 5

Method : Z:\VOASRV\HPCHEM1\MSVOA_R\METHODS\SOMRTR101518WMA.M
 Title : TRACE VOA SOM01.0

Signal : TIC

peak #	R.T. min	first scan	max scan	last scan	PK TY	peak height	corr. area	corr. % max.	% of total
1	2.160	73	79	103	rVB2	783028	3212817	1.52%	0.231%
2	3.048	217	225	243	rVB2	792143	2365956	1.12%	0.170%
3	4.484	438	461	485	rVB2	965731	4779606	2.25%	0.344%
4	6.473	775	788	802	rBV2	1636411	5464749	2.58%	0.394%
5	6.674	812	821	845	rVB	794905	2369445	1.12%	0.171%
6	7.519	948	960	975	rBV	4146104	12775823	6.03%	0.920%
7	7.927	1002	1027	1052	rBV	49891938	211997211	100.00%	15.271%
8	8.164	1059	1066	1083	rVB	3218006	7338671	3.46%	0.529%
9	8.462	1108	1115	1126	rVB	1300960	2537119	1.20%	0.183%
10	8.955	1190	1196	1212	rVB	4237317	8793667	4.15%	0.633%
11	9.977	1356	1364	1367	rBV	1684705	3070984	1.45%	0.221%
12	10.050	1367	1376	1387	rVV	45641404	131081575	61.83%	9.443%
13	10.141	1387	1391	1403	rVB	1050549	2286057	1.08%	0.165%
14	10.299	1411	1417	1428	rVB2	914055	2176959	1.03%	0.157%
15	11.291	1573	1580	1590	rBV2	1675452	3440156	1.62%	0.248%
16	11.394	1590	1597	1607	rBV	37045438	69221702	32.65%	4.986%
17	11.510	1608	1616	1633	rVB	45982507	112367056	53.00%	8.094%
18	11.833	1663	1669	1689	rVB3	38050120	73426342	34.64%	5.289%
19	12.131	1712	1718	1726	rBV	3118513	4254554	2.01%	0.306%
20	12.471	1769	1774	1779	rBV	2381983	3279796	1.55%	0.236%
21	12.538	1779	1785	1788	rVV	15118068	21490102	10.14%	1.548%
22	12.569	1788	1790	1794	rVV	6067195	7580540	3.58%	0.546%
23	12.617	1794	1798	1809	rVB	14092777	19251834	9.08%	1.387%
24	12.769	1816	1823	1834	rBV	6229169	9709339	4.58%	0.699%
25	12.921	1836	1848	1853	rBV	27465577	42049657	19.84%	3.029%
26	12.970	1853	1856	1861	rVB	2594819	3432881	1.62%	0.247%
27	13.140	1874	1884	1893	rVB	17398140	28906380	13.64%	2.082%
28	13.256	1893	1903	1908	rBV	14321708	23401501	11.04%	1.686%
29	13.426	1920	1931	1936	rBV	38548043	71639785	33.79%	5.161%
30	13.463	1936	1937	1942	rVV2	2745517	3037588	1.43%	0.219%
31	13.530	1942	1948	1954	rVV2	10154683	15611039	7.36%	1.125%
32	13.603	1954	1960	1968	rVB	36433293	70642846	33.32%	5.089%
33	13.767	1983	1987	1992	rVB	2080297	2676838	1.26%	0.193%
34	13.871	2000	2004	2009	rBV	3797471	5412527	2.55%	0.390%

Data Path : Z:\voasrv\HPCHEM1\MSVOA R\Data\VR110618\
 Data File : VR026188.D
 Acq On : 6 Nov 2018 12:19
 Operator : SY/MD
 Sample : J5801-02
 Misc : 25mL/MSVOA R/WATER
 ALS Vial : 4 Sample Multiplier: 1

Instrument :
 MSVOA_R
 ClientSampleId :
 F9D01

Integration Parameters: rteint.p
 Integrator: RTE
 Smoothing : ON Filtering: 5
 Sampling : 1 Min Area: 3 % of largest Peak
 Start Thrs: 0.2 Max Peaks: 100
 Stop Thrs : 0 Peak Location: TOP

If leading or trailing edge < 100 prefer < Baseline drop else tangent >
 Peak separation: 5

Method : Z:\VOASRV\HPCHEM1\MSVOA_R\METHODS\SOMRTR101518WMA.M
 Title : TRACE VOA SOM01.0

35	14.059	2030	2035	2038	rVV	4325474	6804209	3.21%	0.490%
36	14.096	2038	2041	2044	rVV2	4340190	7200930	3.40%	0.519%
37	14.156	2044	2051	2058	rVV2	5207091	14346483	6.77%	1.033%
38	14.351	2079	2083	2089	rBV	3274842	4552587	2.15%	0.328%
39	14.473	2094	2103	2108	rVV3	5914198	11641547	5.49%	0.839%
40	14.534	2108	2113	2121	rVB2	5445712	8306830	3.92%	0.598%
41	14.619	2121	2127	2133	rBV	17213659	23388844	11.03%	1.685%
42	14.728	2139	2145	2150	rBV4	1698884	3042509	1.44%	0.219%
43	15.020	2183	2193	2201	rVV2	71179614	207088610	97.68%	14.918%
44	15.099	2201	2206	2213	rVB	15736498	24276677	11.45%	1.749%
45	16.006	2349	2355	2368	rVB	26278830	50282319	23.72%	3.622%
46	16.194	2379	2386	2415	rVB	16334068	30677885	14.47%	2.210%
47	16.772	2469	2481	2484	rBV	2831592	5511328	2.60%	0.397%

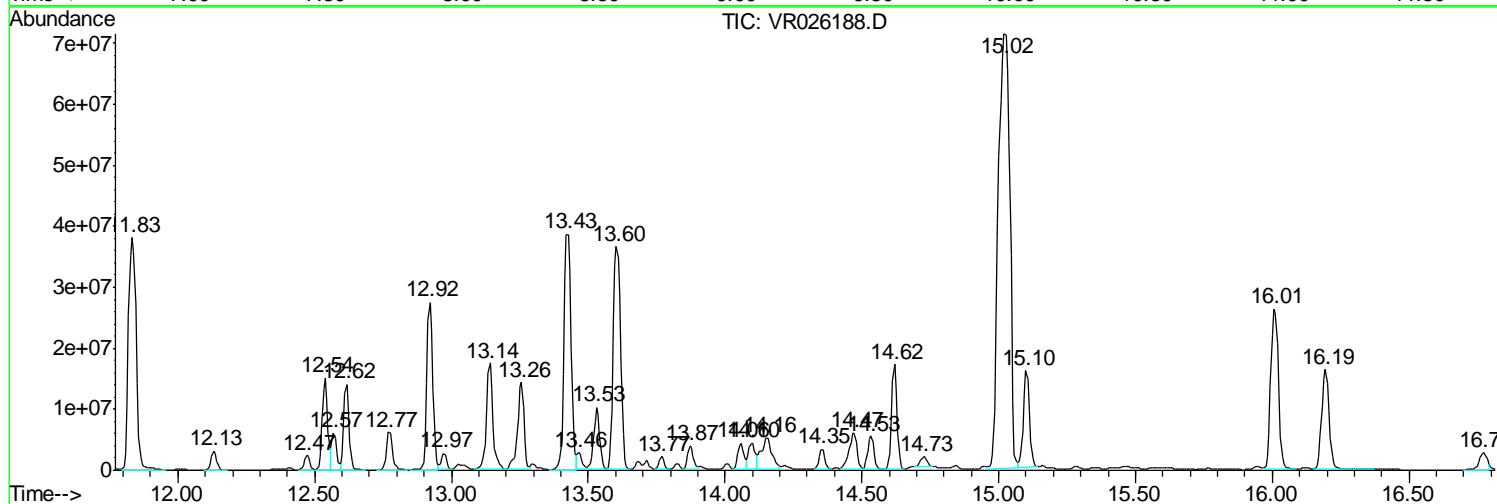
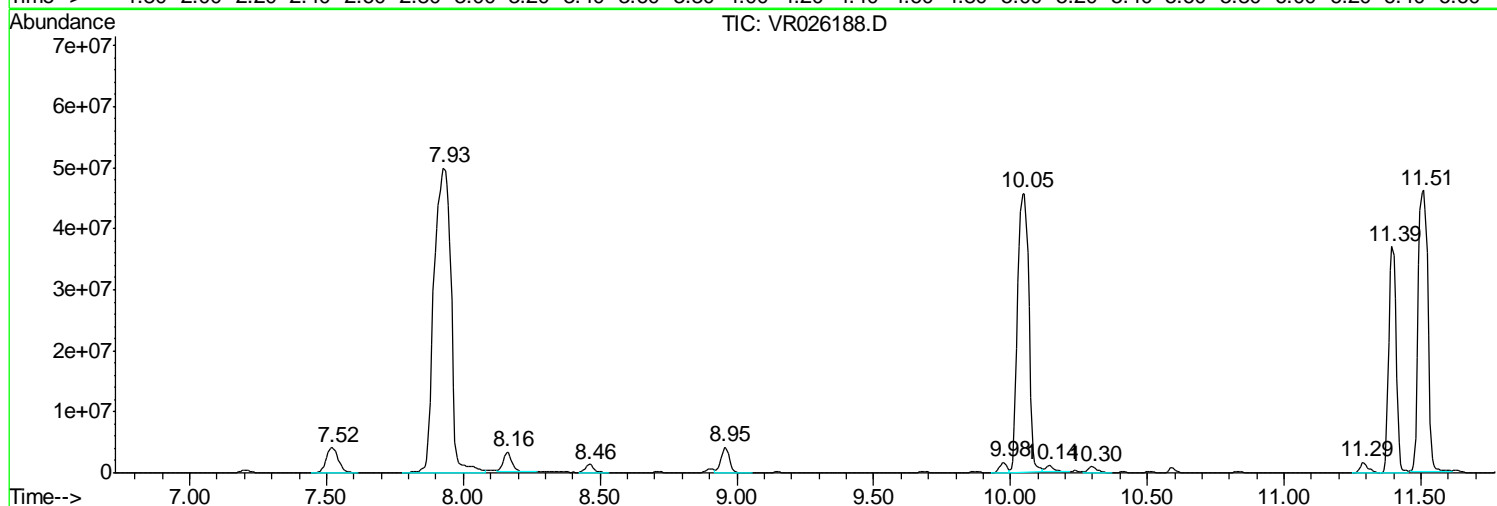
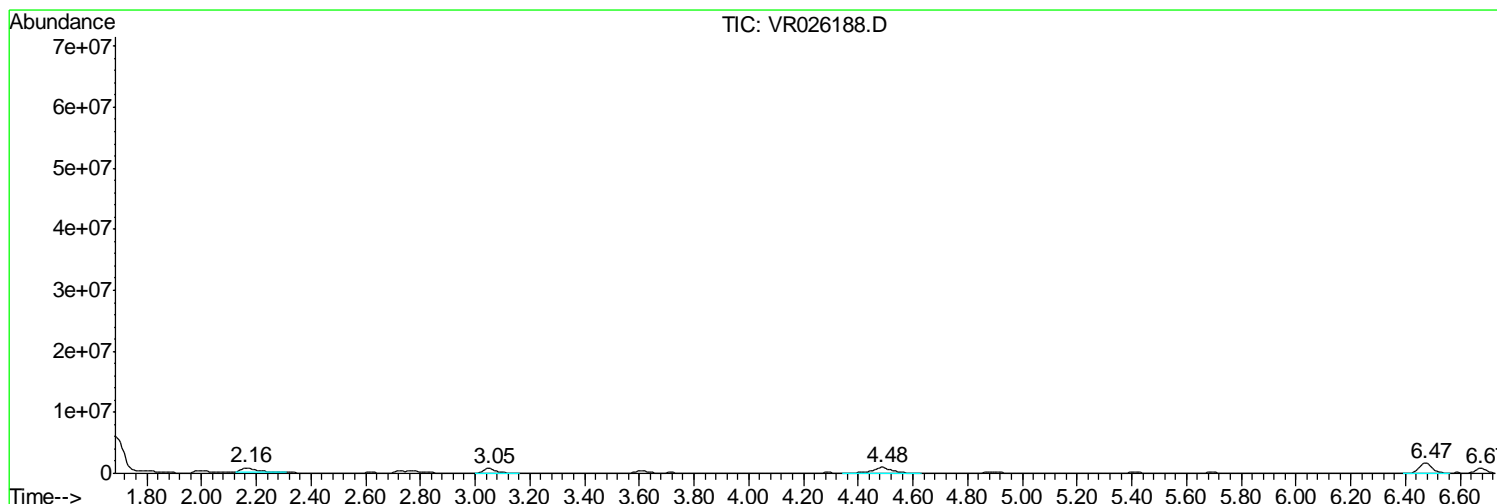
Sum of corrected areas: 1388203860

Data Path : Z:\voasrv\HPCHEM1\MSVOA R\Data\VR110618\
 Data File : VR026188.D
 Acq On : 6 Nov 2018 12:19
 Operator : SY/MD
 Sample : J5801-02
 Misc : 25mL/MSVOA R/WATER
 ALS Vial : 4 Sample Multiplier: 1

Instrument :
 MSVOA_R
 ClientSampleId :
 F9D01

Quant Method : Z:\VOASRV\HPCHEM1\MSVOA_R\METHODS\SOMRTR101518WMA.M
 Quant Title : TRACE VOA SOM01.0

TIC Library : C:\DATABASE\NIST11.L
 TIC Integration Parameters: LSCINT.P



Data Path : Z:\voasrv\HPCHEM1\MSVOA R\Data\VR110618\
 Data File : VR026188.D
 Acq On : 6 Nov 2018 12:19
 Operator : SY/MD
 Sample : J5801-02
 Misc : 25mL/MSVOA R/WATER
 ALS Vial : 4 Sample Multiplier: 1

Instrument :
 MSVOA_R
 ClientSampleID :
 F9D01

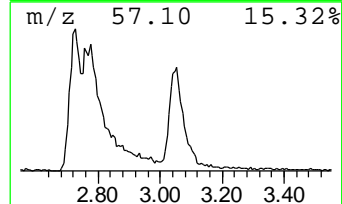
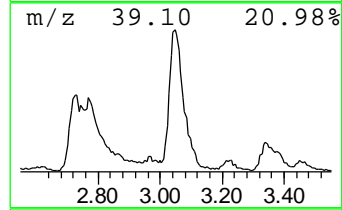
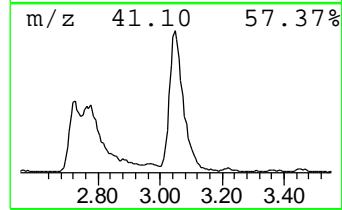
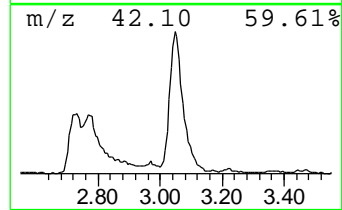
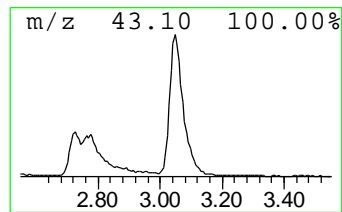
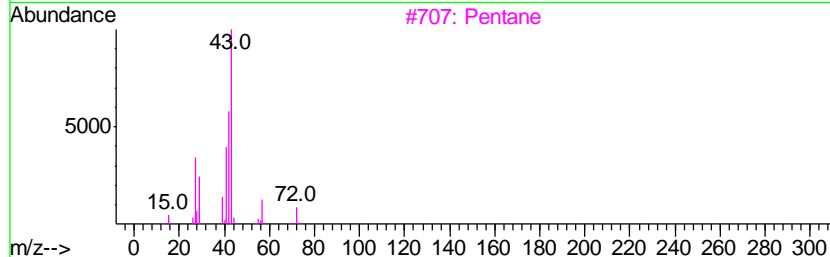
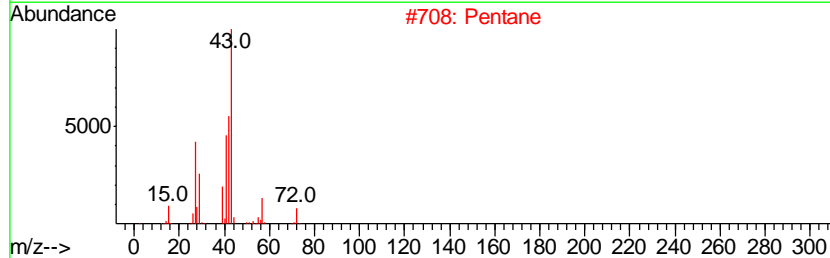
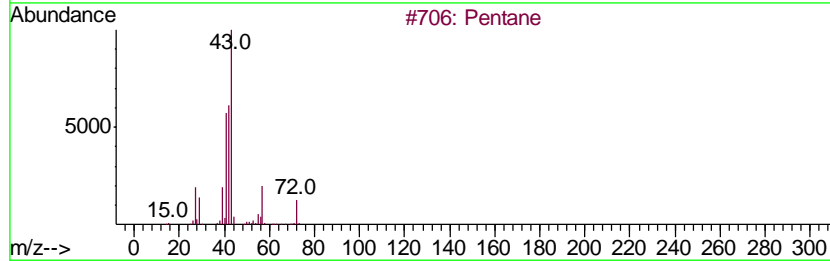
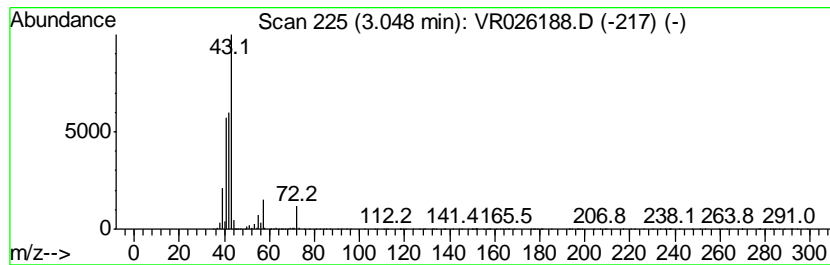
Quant Method : Z:\VOASRV\HPCHEM1\MSVOA_R\METHODS\SOMRTR101518WMA.M
 Quant Title : TRACE VOA SOM01.0

TIC Library : C:\DATABASE\NIST11.L
 TIC Integration Parameters: LSCINT.P

 Peak Number 1 (DEL) Alkane: Straight-Chai... Concentration Rank 12

R.T.	EstConc	Area	Relative to ISTD	R.T.
3.05	4.66 ug/L	2365960	1,4-Difluorobenzene	8.46

Hit#	of	Tentative ID	MW	MolForm	CAS#	Qual
1	5	Pentane	72	C5H12	000109-66-0	91
2		Pentane	72	C5H12	000109-66-0	86
3		Pentane	72	C5H12	000109-66-0	86
4		Pentane	72	C5H12	000109-66-0	64
5		Butane, 2-methyl-	72	C5H12	000078-78-4	50



Data Path : Z:\voasrv\HPCHEM1\MSVOA R\Data\VR110618\
 Data File : VR026188.D
 Acq On : 6 Nov 2018 12:19
 Operator : SY/MD
 Sample : J5801-02
 Misc : 25mL/MSVOA R/WATER
 ALS Vial : 4 Sample Multiplier: 1

Instrument :
 MSVOA_R
 ClientSampled :
 F9D01

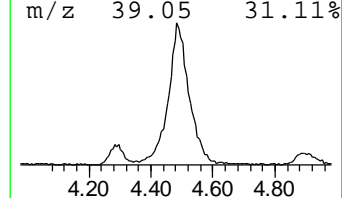
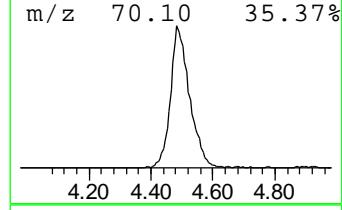
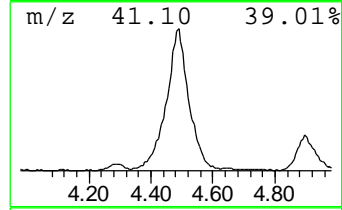
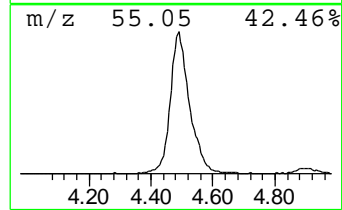
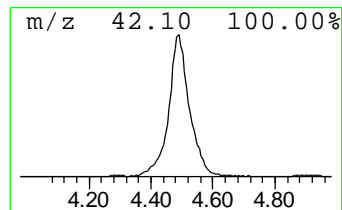
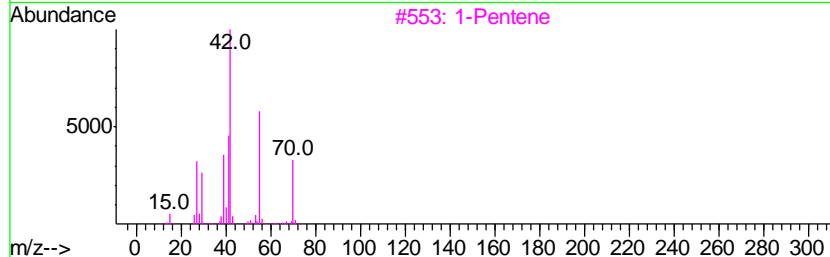
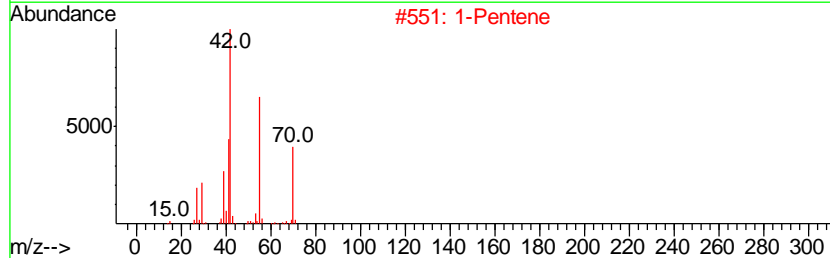
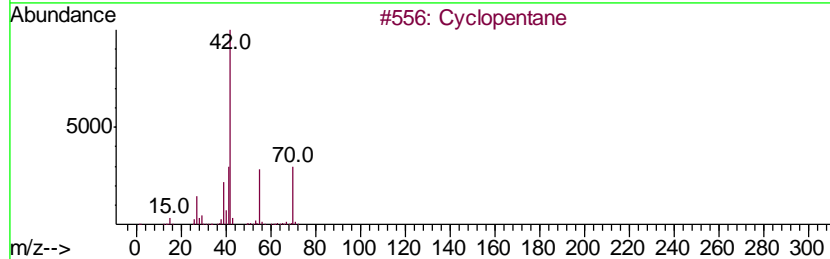
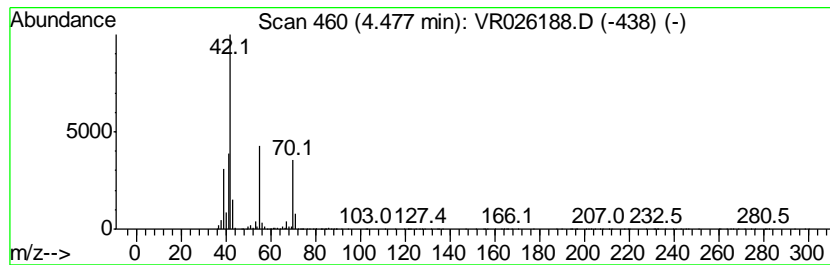
Quant Method : Z:\VOASRV\HPCHEM1\MSVOA_R\METHODS\SOMRTR101518WMA.M
 Quant Title : TRACE VOA SOM01.0

TIC Library : C:\DATABASE\NIST11.L
 TIC Integration Parameters: LSCINT.P

 Peak Number 2 (DEL) Alkane: Cyclic4.48 Concentration Rank 7

R.T.	EstConc	Area	Relative to ISTD	R.T.
4.48	9.42 ug/L	4779610	1,4-Difluorobenzene	8.46

Hit#	of	Tentative ID	MW	MolForm	CAS#	Qual
1	5	Cyclopentane	70	C5H10	000287-92-3	90
2		1-Pentene	70	C5H10	000109-67-1	80
3		1-Pentene	70	C5H10	000109-67-1	78
4		Cyclopentane	70	C5H10	000287-92-3	72
5		Cyclobutane, methyl-	70	C5H10	000598-61-8	56



Data Path : Z:\voasrv\HPCHEM1\MSVOA R\Data\VR110618\
 Data File : VR026188.D
 Acq On : 6 Nov 2018 12:19
 Operator : SY/MD
 Sample : J5801-02
 Misc : 25mL/MSVOA R/WATER
 ALS Vial : 4 Sample Multiplier: 1

Instrument :
 MSVOA_R
 ClientSampled :
 F9D01

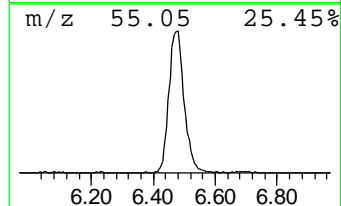
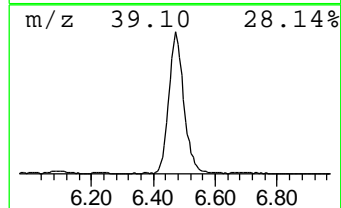
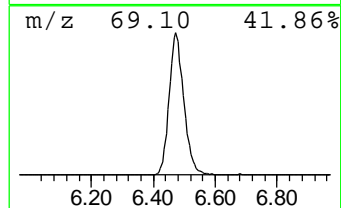
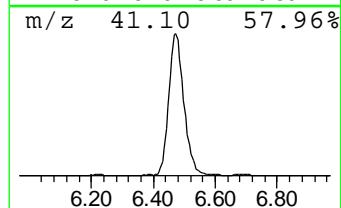
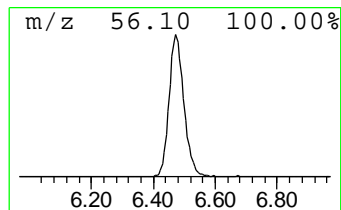
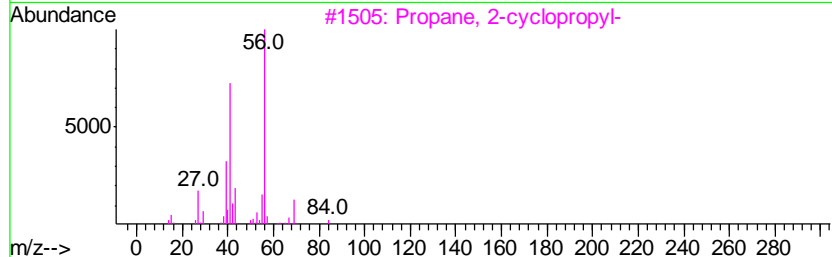
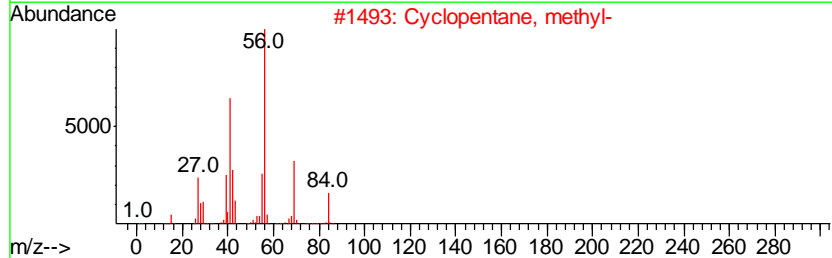
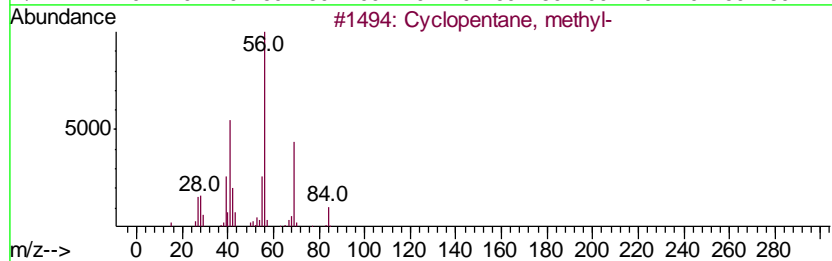
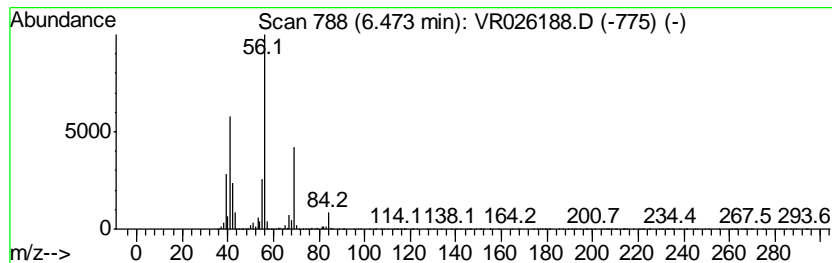
Quant Method : Z:\VOASRV\HPCHEM1\MSVOA_R\METHODS\SOMRTR101518WMA.M
 Quant Title : TRACE VOA SOM01.0

TIC Library : C:\DATABASE\NIST11.L
 TIC Integration Parameters: LSCINT.P

 Peak Number 3 (DEL) Alkane: Cyclic6.47 Concentration Rank 5

R.T.	EstConc	Area	Relative to ISTD	R.T.
6.47	10.77 ug/L	5464750	1,4-Difluorobenzene	8.46

Hit#	of	Tentative ID	MW	MolForm	CAS#	Qual
1	5	Cyclopentane, methyl-	84	C6H12	000096-37-7	91
2		Cyclopentane, methyl-	84	C6H12	000096-37-7	90
3		Propane, 2-cyclopropyl-	84	C6H12	003638-35-5	80
4		Cyclopentane, methyl-	84	C6H12	000096-37-7	78
5		Cyclobutane, ethyl-	84	C6H12	004806-61-5	72



Data Path : Z:\voasrv\HPCHEM1\MSVOA R\Data\VR110618\
 Data File : VR026188.D
 Acq On : 6 Nov 2018 12:19
 Operator : SY/MD
 Sample : J5801-02
 Misc : 25mL/MSVOA R/WATER
 ALS Vial : 4 Sample Multiplier: 1

Instrument :
 MSVOA_R
 ClientSampleID :
 F9D01

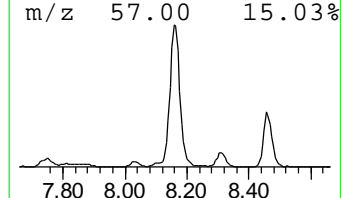
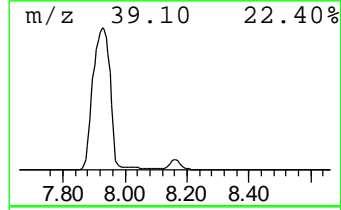
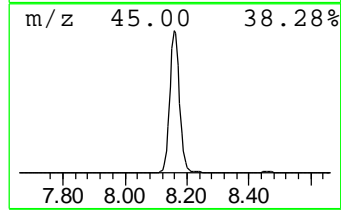
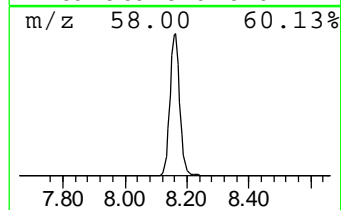
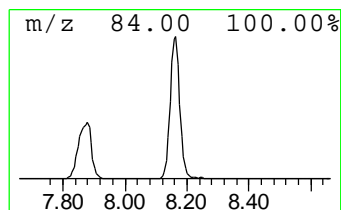
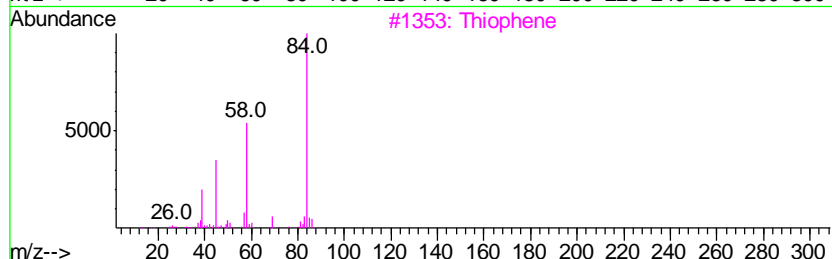
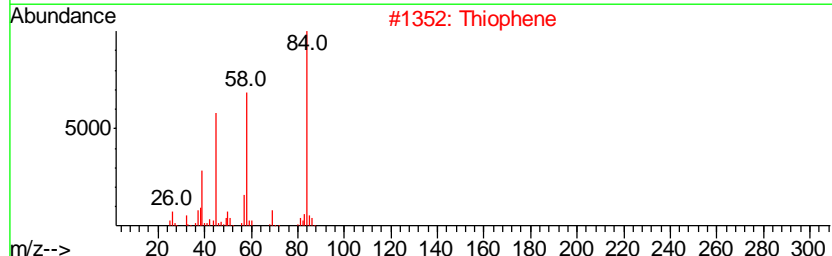
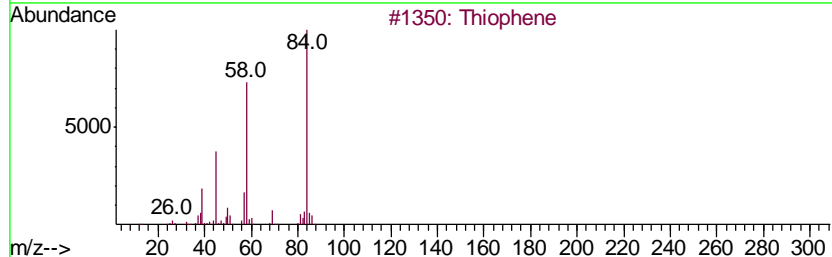
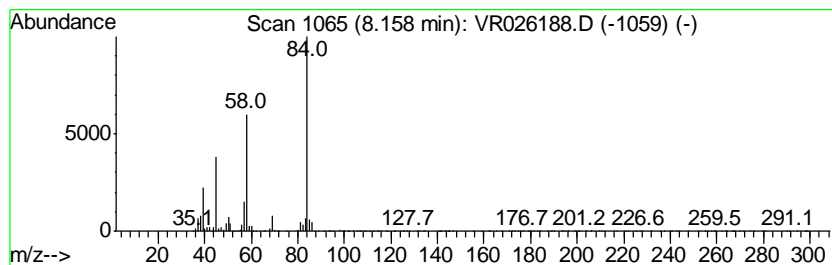
Quant Method : Z:\VOASRV\HPCHEM1\MSVOA_R\METHODS\SOMRTR101518WMA.M
 Quant Title : TRACE VOA SOM01.0

TIC Library : C:\DATABASE\NIST11.L
 TIC Integration Parameters: LSCINT.P

 Peak Number 4 Thiophene Concentration Rank 4

R.T.	EstConc	Area	Relative to ISTD	R.T.
8.16	14.46 ug/L	7338670	1,4-Difluorobenzene	8.46

Hit#	of	Tentative ID	MW	MolForm	CAS#	Qual
1	5	Thiophene	84	C4H4S	000110-02-1	97
2		Thiophene	84	C4H4S	000110-02-1	91
3		Thiophene	84	C4H4S	000110-02-1	91
4		Thiophene	84	C4H4S	000110-02-1	91
5		4H-1,2,4-Triazol-4-amine	84	C2H4N4	000584-13-4	32



Data Path : Z:\voasrv\HPCHEM1\MSVOA R\Data\VR110618\
 Data File : VR026188.D
 Acq On : 6 Nov 2018 12:19
 Operator : SY/MD
 Sample : J5801-02
 Misc : 25mL/MSVOA R/WATER
 ALS Vial : 4 Sample Multiplier: 1

Instrument :
 MSVOA_R
 ClientSampled :
 F9D01

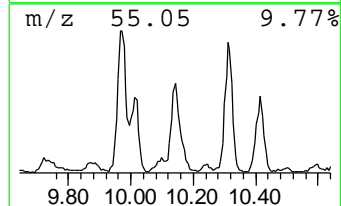
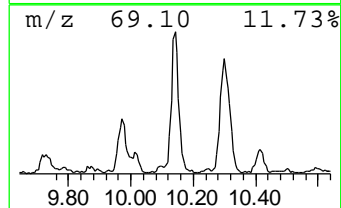
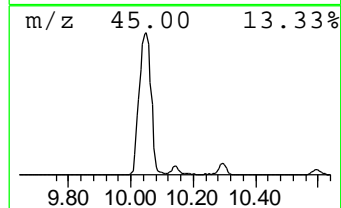
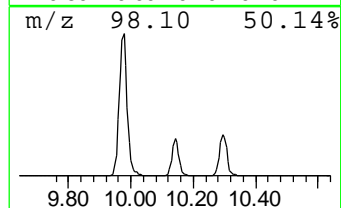
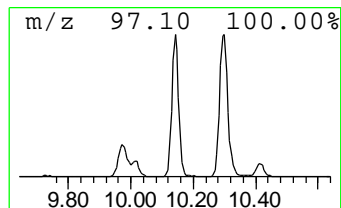
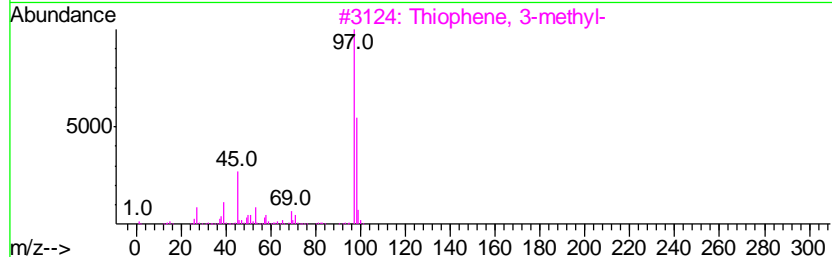
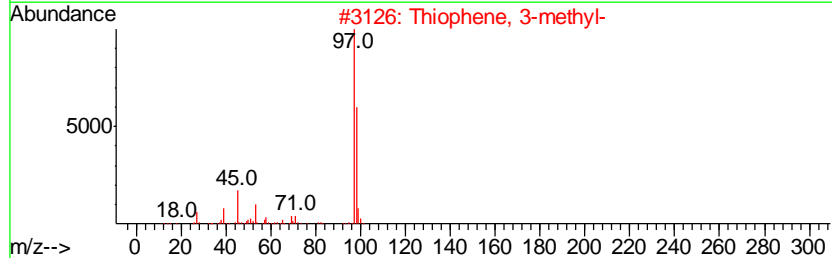
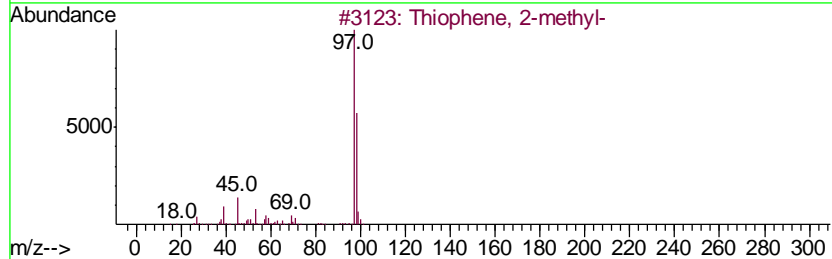
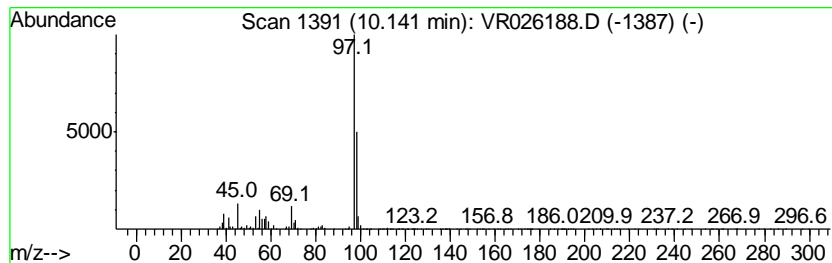
Quant Method : Z:\VOASRV\HPCHEM1\MSVOA_R\METHODS\SOMRTR101518WMA.M
 Quant Title : TRACE VOA SOM01.0

TIC Library : C:\DATABASE\NIST11.L
 TIC Integration Parameters: LSCINT.P

 Peak Number 5 Thiophene, 2-methyl- Concentration Rank 15

R.T.	EstConc	Area	Relative to ISTD	R.T.
10.14	3.32 ug/L	2286060	Chlorobenzene-d5	11.29

Hit#	of	Tentative ID	MW	MolForm	CAS#	Qual
1	5	Thiophene, 2-methyl-	98	C5H6S	000554-14-3	91
2		Thiophene, 3-methyl-	98	C5H6S	000616-44-4	91
3		Thiophene, 3-methyl-	98	C5H6S	000616-44-4	91
4		Thiophene, 3-methyl-	98	C5H6S	000616-44-4	87
5		Thiophene, 3-methyl-	98	C5H6S	000616-44-4	83



Data Path : Z:\voasrv\HPCHEM1\MSVOA R\Data\VR110618\
 Data File : VR026188.D
 Acq On : 6 Nov 2018 12:19
 Operator : SY/MD
 Sample : J5801-02
 Misc : 25mL/MSVOA R/WATER
 ALS Vial : 4 Sample Multiplier: 1

Instrument :
 MSVOA_R
 ClientSampled :
 F9D01

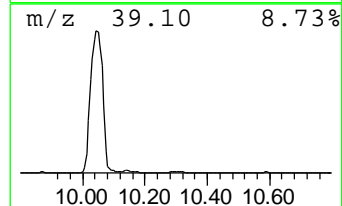
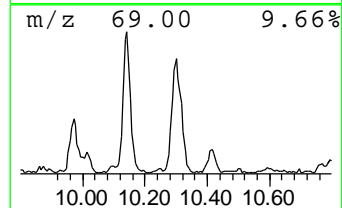
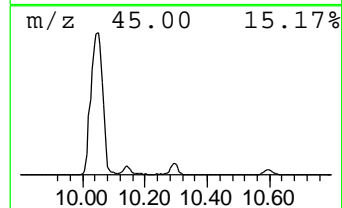
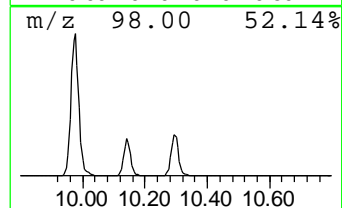
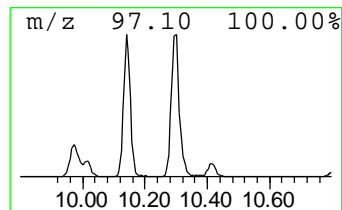
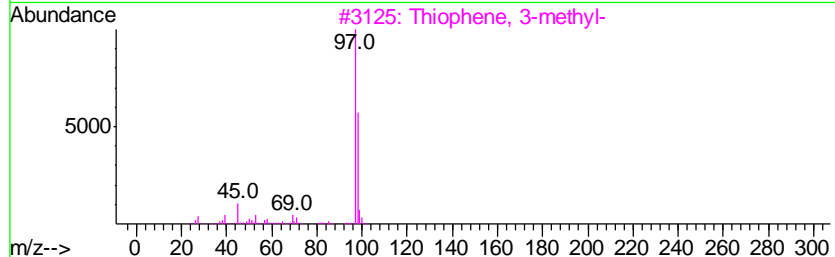
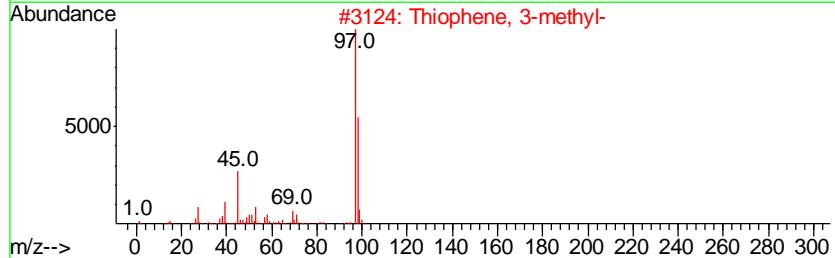
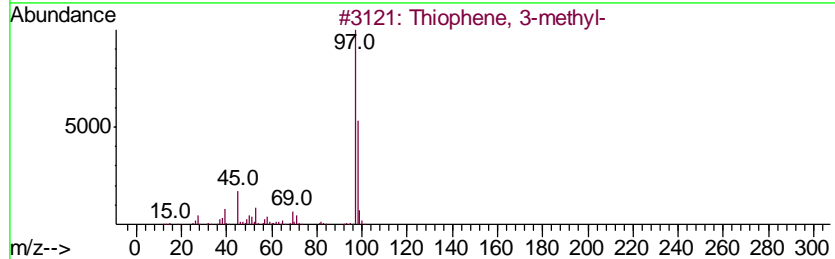
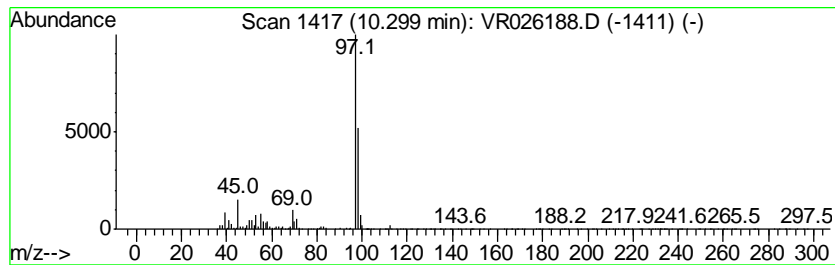
Quant Method : Z:\VOASRV\HPCHEM1\MSVOA_R\METHODS\SOMRTR101518WMA.M
 Quant Title : TRACE VOA SOM01.0

TIC Library : C:\DATABASE\NIST11.L
 TIC Integration Parameters: LSCINT.P

 Peak Number 6 Thiophene, 3-methyl- Concentration Rank 16

R.T.	EstConc	Area	Relative to ISTD	R.T.
10.30	3.16 ug/L	2176960	Chlorobenzene-d5	11.29

Hit#	of	Tentative ID	MW	MolForm	CAS#	Qual
1	5	Thiophene, 3-methyl-	98	C5H6S	000616-44-4	97
2		Thiophene, 3-methyl-	98	C5H6S	000616-44-4	95
3		Thiophene, 3-methyl-	98	C5H6S	000616-44-4	91
4		Thiophene, 2-methyl-	98	C5H6S	000554-14-3	90
5		Thiophene, 2-methyl-	98	C5H6S	000554-14-3	87



Data Path : Z:\voasrv\HPCHEM1\MSVOA R\Data\VR110618\
 Data File : VR026188.D
 Acq On : 6 Nov 2018 12:19
 Operator : SY/MD
 Sample : J5801-02
 Misc : 25mL/MSVOA R/WATER
 ALS Vial : 4 Sample Multiplier: 1

Instrument :
 MSVOA_R
 ClientSampleID :
 F9D01

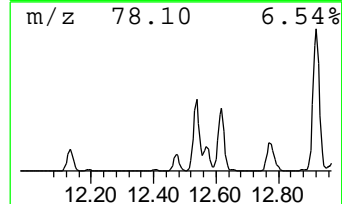
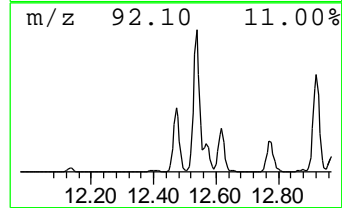
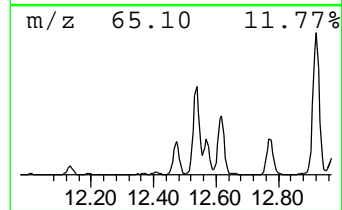
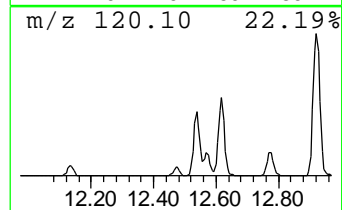
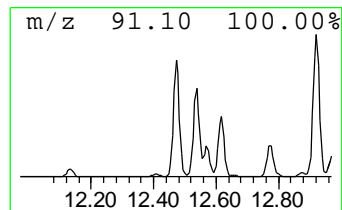
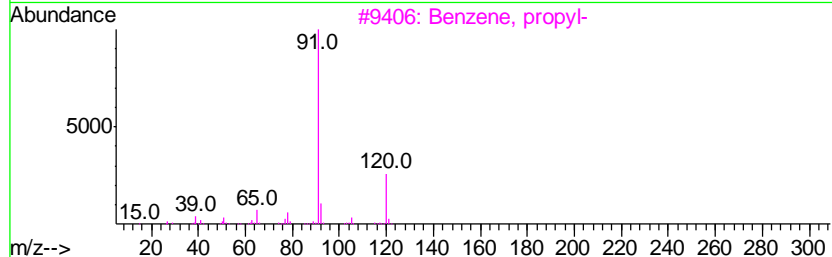
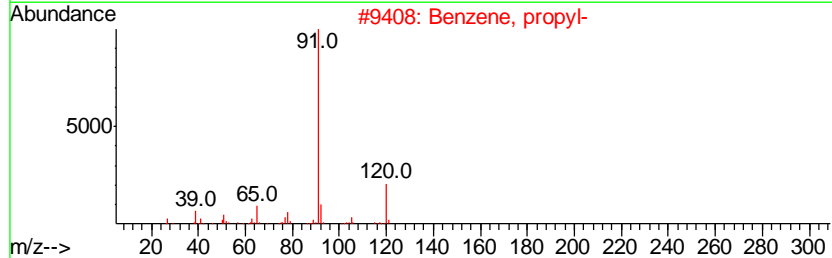
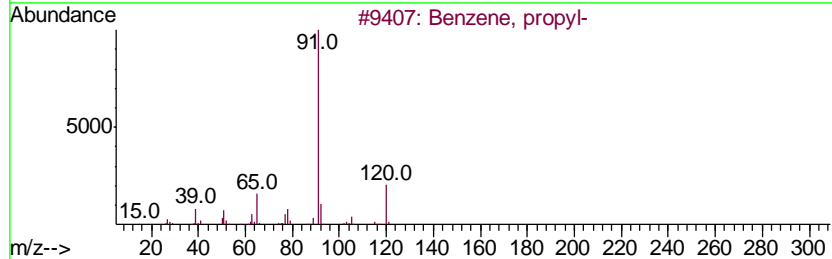
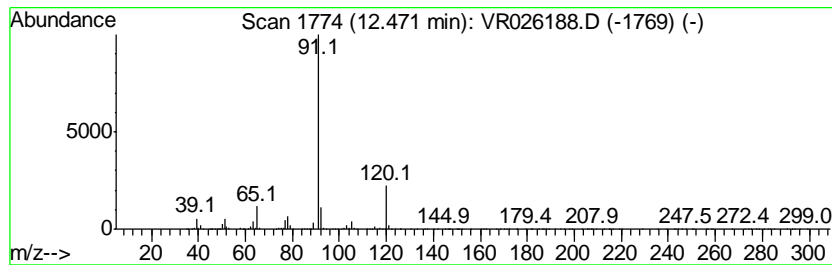
Quant Method : Z:\VOASRV\HPCHEM1\MSVOA_R\METHODS\SOMRTR101518WMA.M
 Quant Title : TRACE VOA SOM01.0

TIC Library : C:\DATABASE\NIST11.L
 TIC Integration Parameters: LSCINT.P

 Peak Number 7 Benzene, propyl- Concentration Rank 28

R.T.	EstConc	Area	Relative to ISTD	R.T.
12.47	0.70 ug/L	3279800	1,4-Dichlorobenzene-d4	13.23

Hit#	of	Tentative ID	MW	MolForm	CAS#	Qual
1	5	Benzene, propyl-	120	C9H12	000103-65-1	94
2		Benzene, propyl-	120	C9H12	000103-65-1	91
3		Benzene, propyl-	120	C9H12	000103-65-1	91
4		N-Benzyl-2-phenethylamine	211	C15H17N	003647-71-0	83
5		1,2-Ethanediamine, N,N'-bis(phen...	240	C16H20N2	000140-28-3	64



Data Path : Z:\voasrv\HPCHEM1\MSVOA R\Data\VR110618\
 Data File : VR026188.D
 Acq On : 6 Nov 2018 12:19
 Operator : SY/MD
 Sample : J5801-02
 Misc : 25mL/MSVOA R/WATER
 ALS Vial : 4 Sample Multiplier: 1

Instrument :
 MSVOA_R
 ClientSampled :
 F9D01

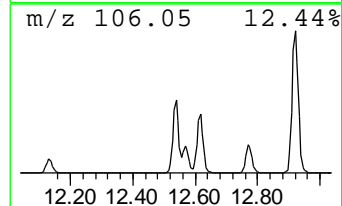
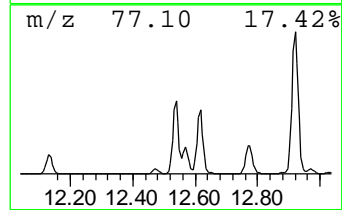
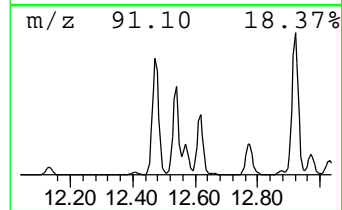
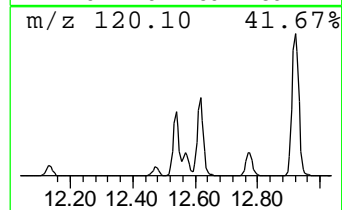
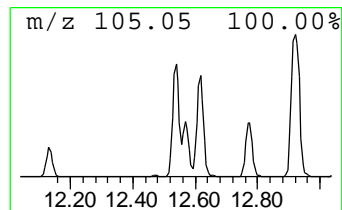
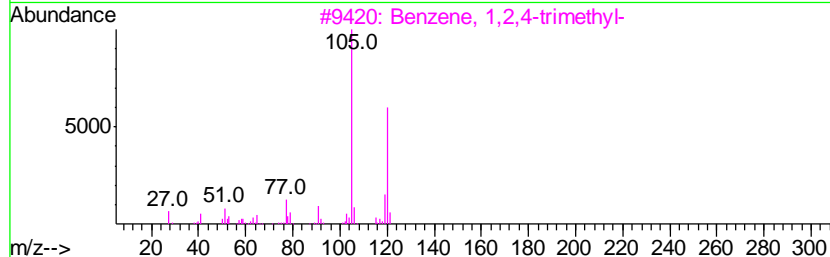
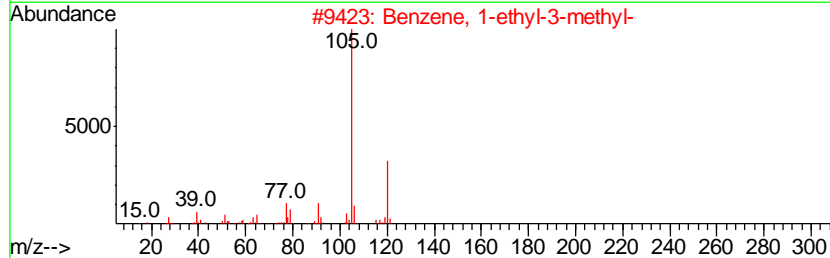
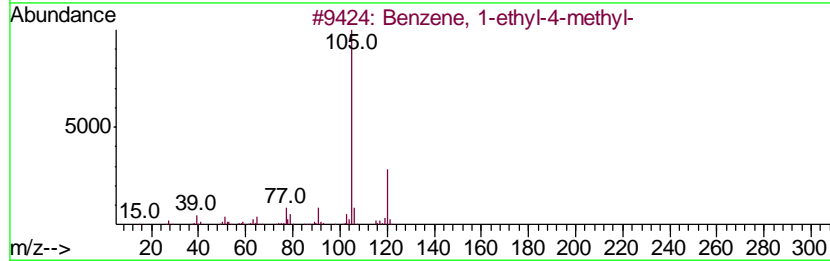
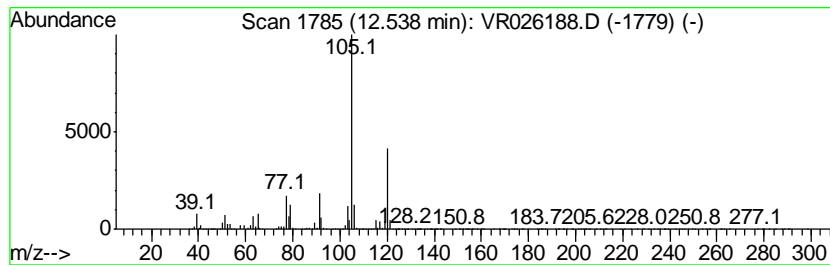
Quant Method : Z:\VOASRV\HPCHEM1\MSVOA_R\METHODS\SOMRTR101518WMA.M
 Quant Title : TRACE VOA SOM01.0

TIC Library : C:\DATABASE\NIST11.L
 TIC Integration Parameters: LSCINT.P

 Peak Number 8 Benzene, 1-ethyl-4-methyl- Concentration Rank 13

R.T.	EstConc	Area	Relative to ISTD	R.T.
12.54	4.59 ug/L	21490100	1,4-Dichlorobenzene-d4	13.23

Hit#	of	Tentative ID	MW	MolForm	CAS#	Qual
1	5	Benzene, 1-ethyl-4-methyl-	120	C9H12	000622-96-8	91
2		Benzene, 1-ethyl-3-methyl-	120	C9H12	000620-14-4	91
3		Benzene, 1,2,4-trimethyl-	120	C9H12	000095-63-6	91
4		Mesitylene	120	C9H12	000108-67-8	91
5		Benzene, 1,2,3-trimethyl-	120	C9H12	000526-73-8	90



Data Path : Z:\voasrv\HPCHEM1\MSVOA R\Data\VR110618\
 Data File : VR026188.D
 Acq On : 6 Nov 2018 12:19
 Operator : SY/MD
 Sample : J5801-02
 Misc : 25mL/MSVOA R/WATER
 ALS Vial : 4 Sample Multiplier: 1

Instrument :
 MSVOA_R
 ClientSampled :
 F9D01

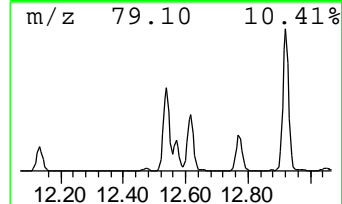
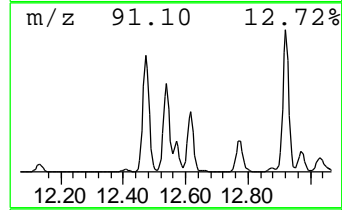
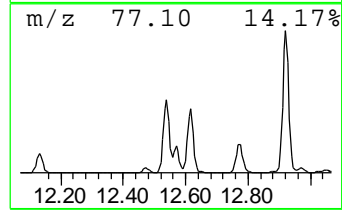
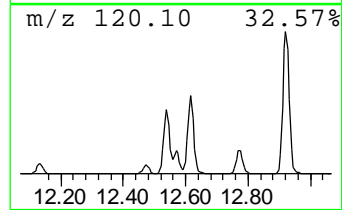
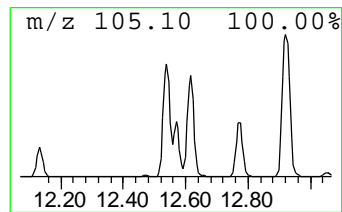
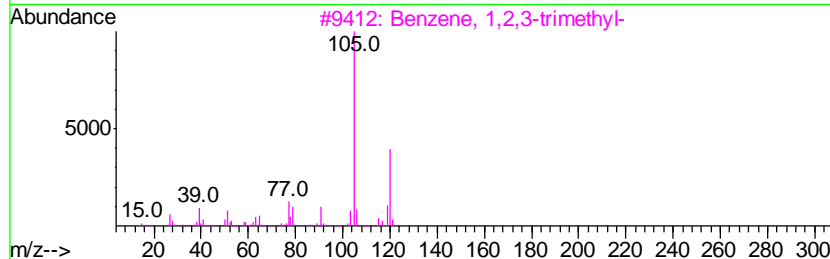
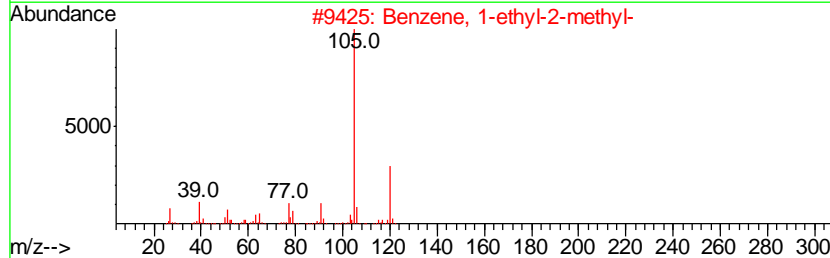
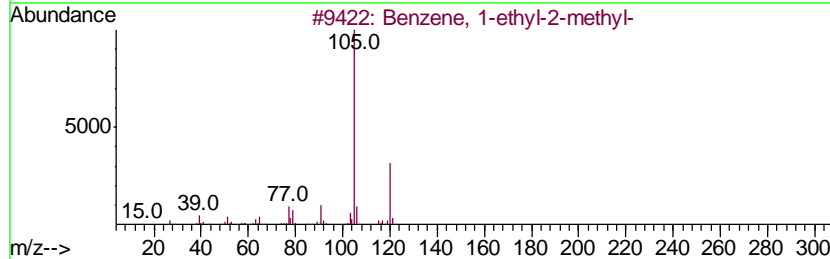
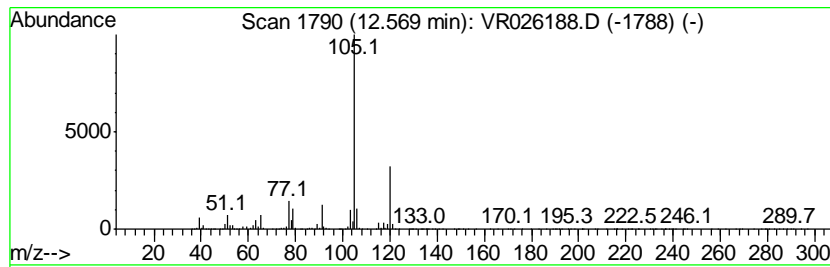
Quant Method : Z:\VOASRV\HPCHEM1\MSVOA_R\METHODS\SOMRTR101518WMA.M
 Quant Title : TRACE VOA SOM01.0

TIC Library : C:\DATABASE\NIST11.L
 TIC Integration Parameters: LSCINT.P

 Peak Number 9 Benzene, 1-ethyl-2-methyl- Concentration Rank 21

R.T.	EstConc	Area	Relative to ISTD	R.T.
12.57	1.62 ug/L	7580540	1,4-Dichlorobenzene-d4	13.23

Hit#	of	Tentative ID	MW	MolForm	CAS#	Qual
1	5	Benzene, 1-ethyl-2-methyl-	120	C9H12	000611-14-3	94
2		Benzene, 1-ethyl-2-methyl-	120	C9H12	000611-14-3	94
3		Benzene, 1,2,3-trimethyl-	120	C9H12	000526-73-8	94
4		Benzene, 1,2,3-trimethyl-	120	C9H12	000526-73-8	91
5		Mesitylene	120	C9H12	000108-67-8	91



Data Path : Z:\voasrv\HPCHEM1\MSVOA R\Data\VR110618\
 Data File : VR026188.D
 Acq On : 6 Nov 2018 12:19
 Operator : SY/MD
 Sample : J5801-02
 Misc : 25mL/MSVOA R/WATER
 ALS Vial : 4 Sample Multiplier: 1

Instrument :
 MSVOA_R
 ClientSampleID :
 F9D01

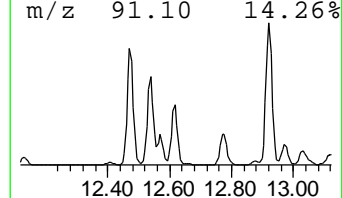
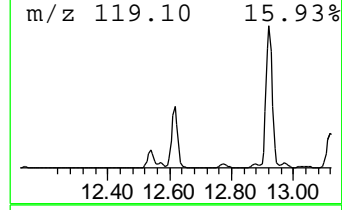
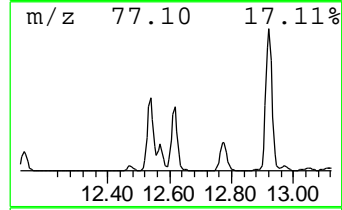
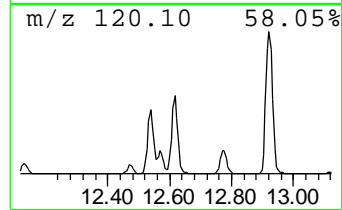
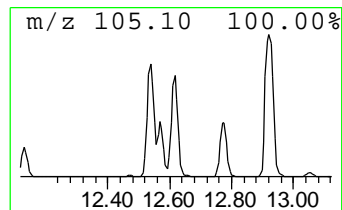
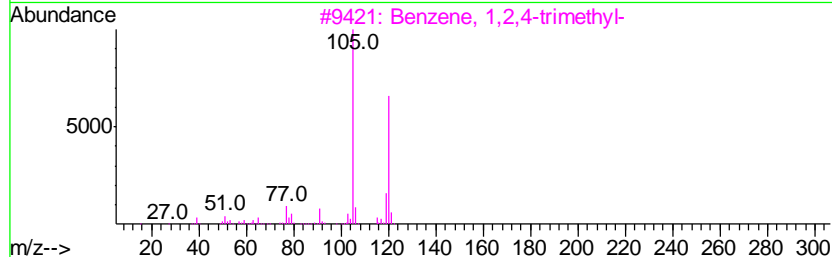
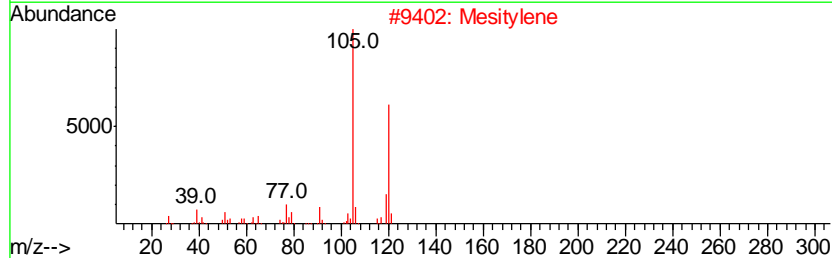
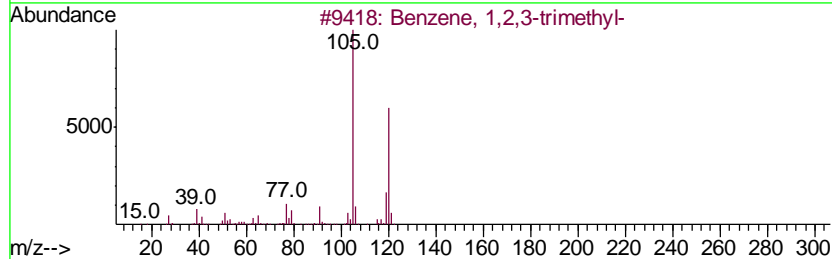
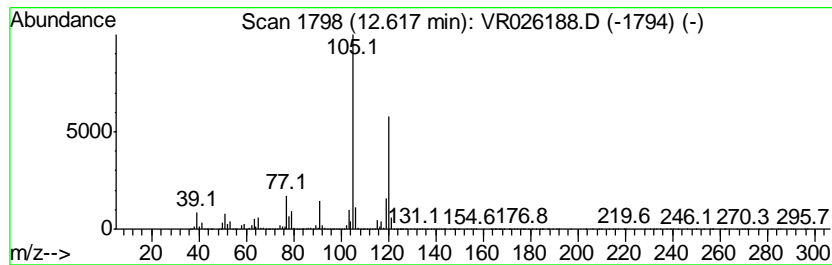
Quant Method : Z:\VOASRV\HPCHEM1\MSVOA_R\METHODS\SOMRTR101518WMA.M
 Quant Title : TRACE VOA SOM01.0

TIC Library : C:\DATABASE\NIST11.L
 TIC Integration Parameters: LSCINT.P

 Peak Number 10 Benzene, 1,2,3-trimethyl- Concentration Rank 14

R.T.	EstConc	Area	Relative to ISTD	R.T.
12.62	4.11 ug/L	19251800	1,4-Dichlorobenzene-d4	13.23

Hit#	of	Tentative ID	MW	MolForm	CAS#	Qual
1	5	Benzene, 1,2,3-trimethyl-	120	C9H12	000526-73-8	95
2		Mesitylene	120	C9H12	000108-67-8	94
3		Benzene, 1,2,4-trimethyl-	120	C9H12	000095-63-6	94
4		Benzene, 1-ethyl-2-methyl-	120	C9H12	000611-14-3	91
5		Benzene, 1-ethyl-2-methyl-	120	C9H12	000611-14-3	91



Data Path : Z:\voasrv\HPCHEM1\MSVOA R\Data\VR110618\
 Data File : VR026188.D
 Acq On : 6 Nov 2018 12:19
 Operator : SY/MD
 Sample : J5801-02
 Misc : 25mL/MSVOA R/WATER
 ALS Vial : 4 Sample Multiplier: 1

Instrument :
 MSVOA_R
 ClientSampled :
 F9D01

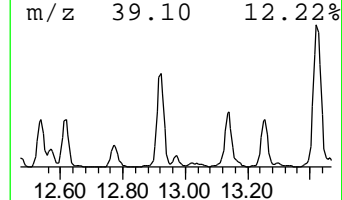
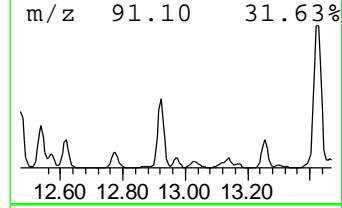
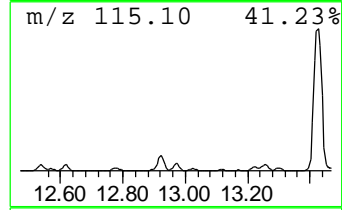
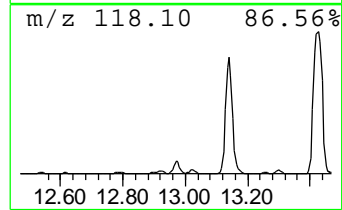
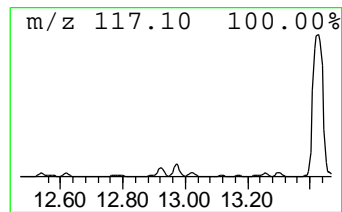
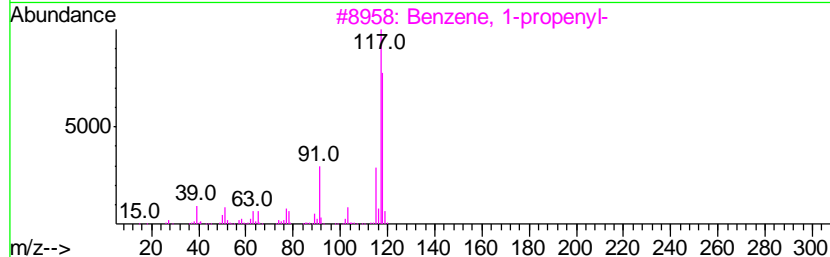
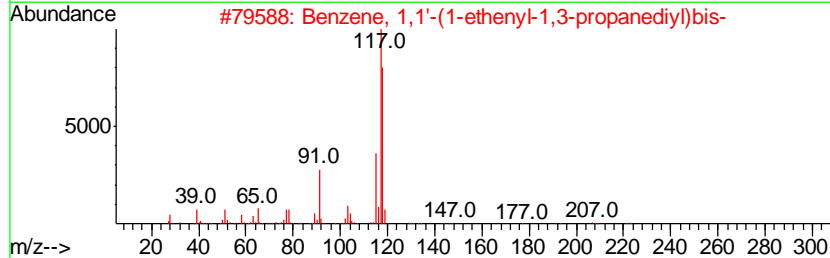
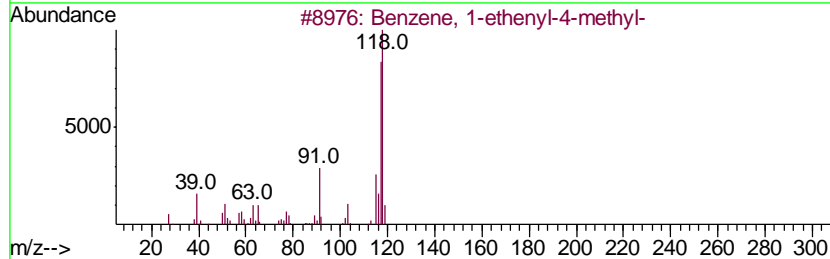
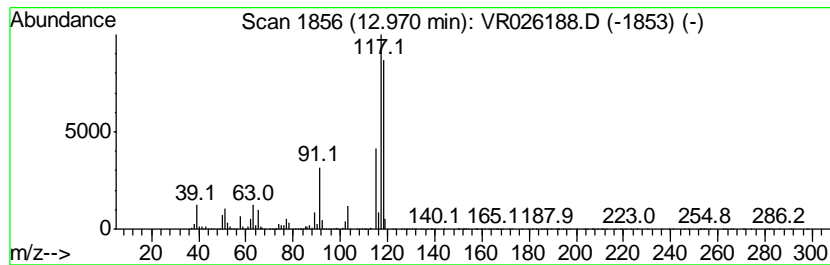
Quant Method : Z:\VOASRV\HPCHEM1\MSVOA_R\METHODS\SOMRTR101518WMA.M
 Quant Title : TRACE VOA SOM01.0

TIC Library : C:\DATABASE\NIST11.L
 TIC Integration Parameters: LSCINT.P

 Peak Number 13 Benzene, 1-ethenyl-4-methyl- Concentration Rank 27

R.T.	EstConc	Area	Relative to ISTD	R.T.
12.97	0.73 ug/L	3432880	1,4-Dichlorobenzene-d4	13.23

Hit#	of	Tentative ID	MW	MolForm	CAS#	Qual
1	5	Benzene, 1-ethenyl-4-methyl-	118	C9H10	000622-97-9	90
2		Benzene, 1,1'-(1-ethenyl-1,3-pro...	222	C17H18	061141-97-7	90
3		Benzene, 1-propenyl-	118	C9H10	000637-50-3	81
4		Benzene, 1-ethenyl-4-methyl-	118	C9H10	000622-97-9	81
5		Benzene, 2-propenyl-	118	C9H10	000300-57-2	81



Data Path : Z:\voasrv\HPCHEM1\MSVOA R\Data\VR110618\
 Data File : VR026188.D
 Acq On : 6 Nov 2018 12:19
 Operator : SY/MD
 Sample : J5801-02
 Misc : 25mL/MSVOA R/WATER
 ALS Vial : 4 Sample Multiplier: 1

Instrument :
 MSVOA_R
 ClientSampled :
 F9D01

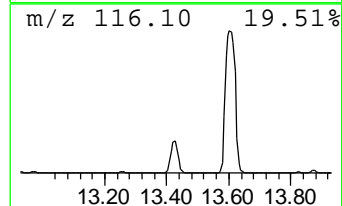
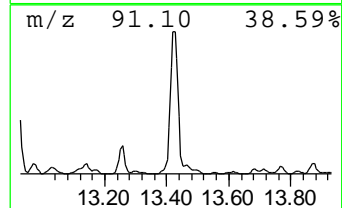
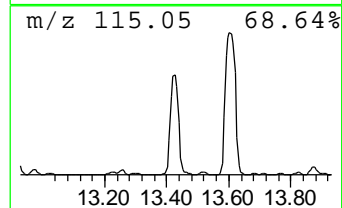
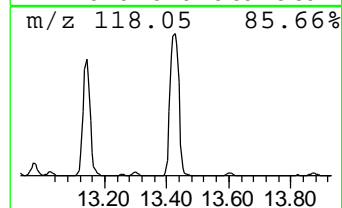
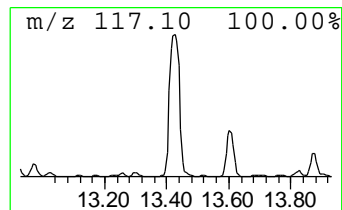
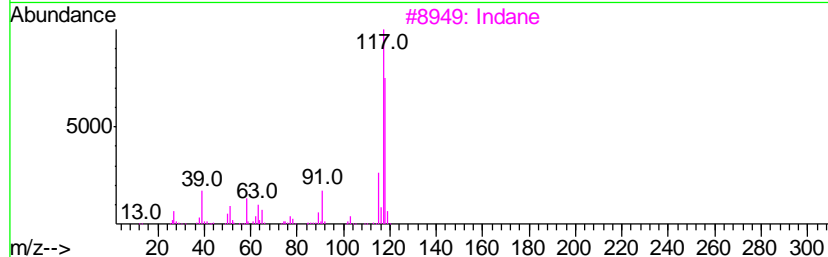
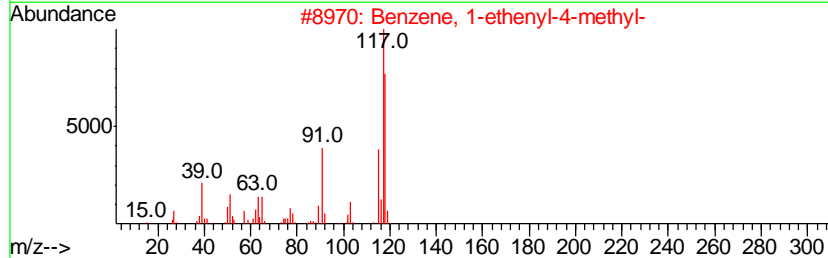
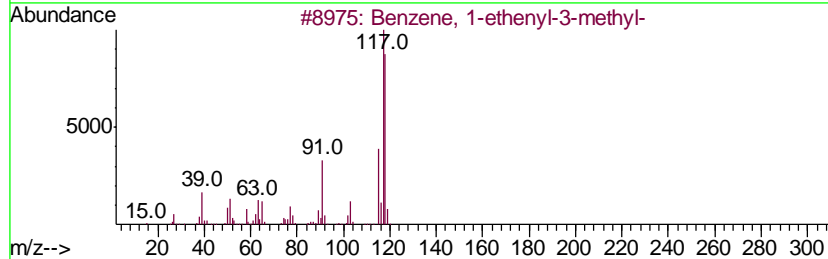
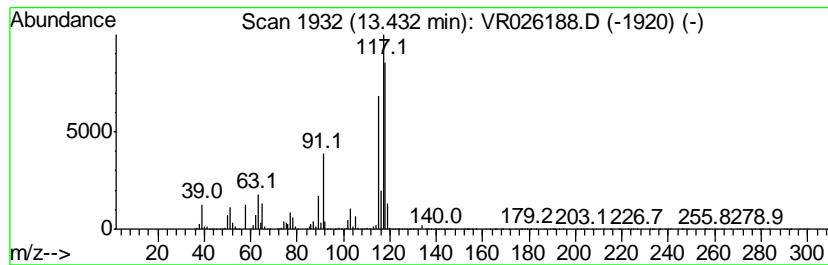
Quant Method : Z:\VOASRV\HPCHEM1\MSVOA_R\METHODS\SOMRTR101518WMA.M
 Quant Title : TRACE VOA SOM01.0

TIC Library : C:\DATABASE\NIST11.L
 TIC Integration Parameters: LSCINT.P

 Peak Number 14 Benzene, 1-ethenyl-3-methyl- Concentration Rank 2

R.T.	EstConc	Area	Relative to ISTD	R.T.
13.43	15.31 ug/L	71639800	1,4-Dichlorobenzene-d4	13.23

Hit#	of	Tentative ID	MW	MolForm	CAS#	Qual
1	5	Benzene, 1-ethenyl-3-methyl-	118	C9H10	000100-80-1	92
2		Benzene, 1-ethenyl-4-methyl-	118	C9H10	000622-97-9	91
3		Indane	118	C9H10	000496-11-7	70
4		Benzene, 1-ethenyl-2-methyl-	118	C9H10	000611-15-4	64
5		Benzene, 2-propenyl-	118	C9H10	000300-57-2	64



Data Path : Z:\voasrv\HPCHEM1\MSVOA R\Data\VR110618\
 Data File : VR026188.D
 Acq On : 6 Nov 2018 12:19
 Operator : SY/MD
 Sample : J5801-02
 Misc : 25mL/MSVOA R/WATER
 ALS Vial : 4 Sample Multiplier: 1

Instrument :
 MSVOA_R
 ClientSampled :
 F9D01

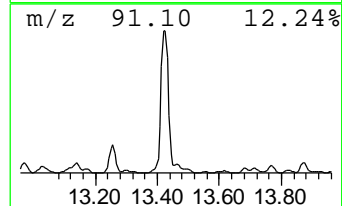
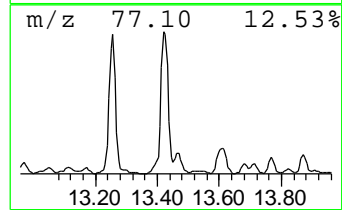
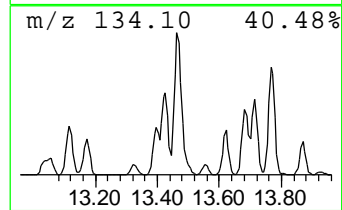
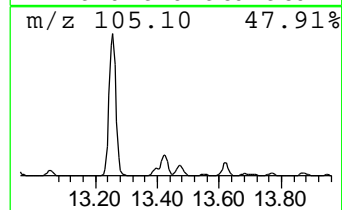
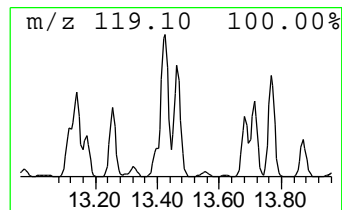
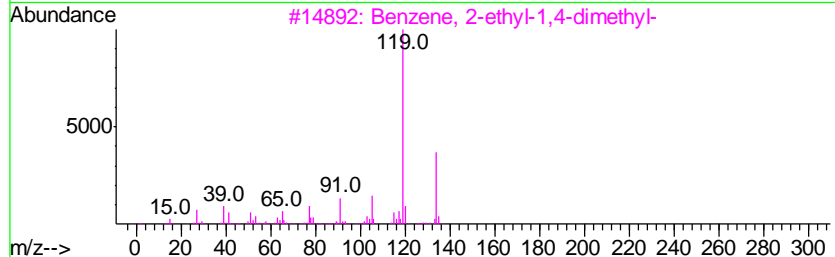
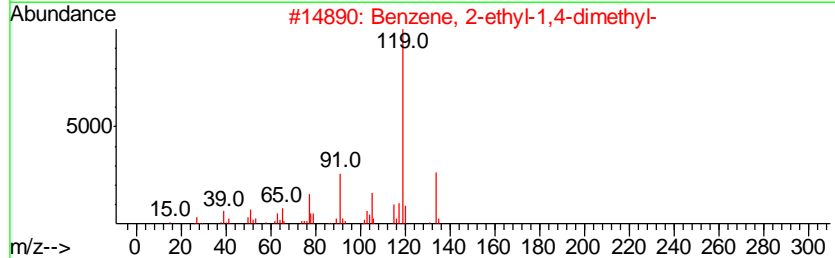
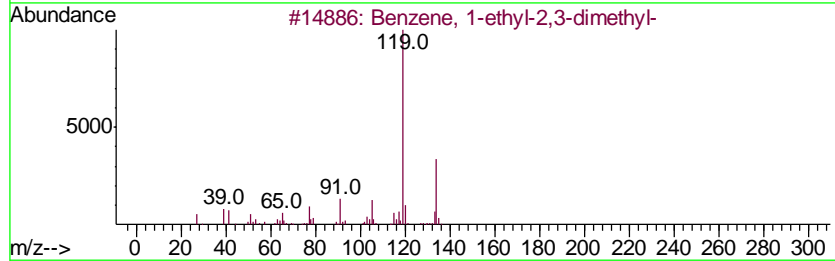
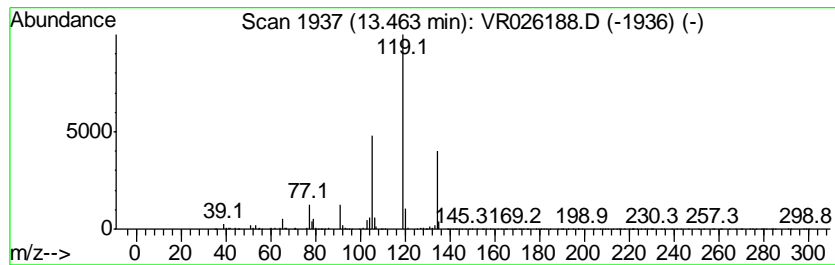
Quant Method : Z:\VOASRV\HPCHEM1\MSVOA_R\METHODS\SOMRTR101518WMA.M
 Quant Title : TRACE VOA SOM01.0

TIC Library : C:\DATABASE\NIST11.L
 TIC Integration Parameters: LSCINT.P

 Peak Number 15 Benzene, 1-ethyl-2,3-dimethyl- Concentration Rank 30

R.T.	EstConc	Area	Relative to ISTD	R.T.
13.46	0.65 ug/L	3037590	1,4-Dichlorobenzene-d4	13.23

Hit#	of	Tentative ID	MW	MolForm	CAS#	Qual
1	5	Benzene, 1-ethyl-2,3-dimethyl-	134	C10H14	000933-98-2	91
2		Benzene, 2-ethyl-1,4-dimethyl-	134	C10H14	001758-88-9	90
3		Benzene, 2-ethyl-1,4-dimethyl-	134	C10H14	001758-88-9	90
4		Benzene, 1-ethyl-2,3-dimethyl-	134	C10H14	000933-98-2	87
5		Benzene, 2-ethyl-1,4-dimethyl-	134	C10H14	001758-88-9	86



Data Path : Z:\voasrv\HPCHEM1\MSVOA R\Data\VR110618\
 Data File : VR026188.D
 Acq On : 6 Nov 2018 12:19
 Operator : SY/MD
 Sample : J5801-02
 Misc : 25mL/MSVOA R/WATER
 ALS Vial : 4 Sample Multiplier: 1

Instrument :
 MSVOA_R
 ClientSampled :
 F9D01

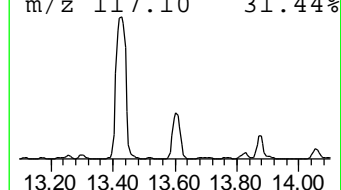
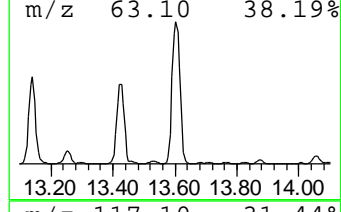
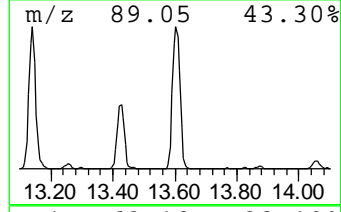
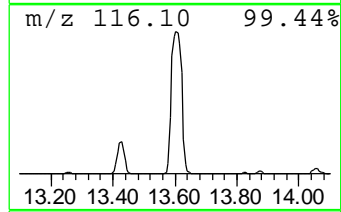
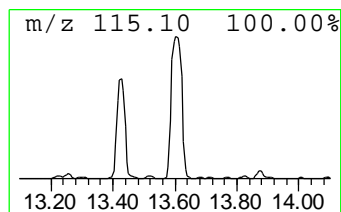
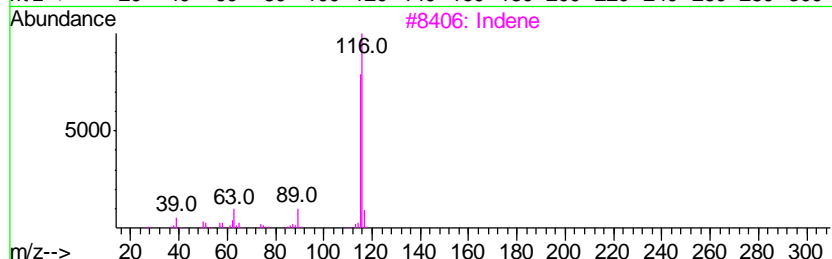
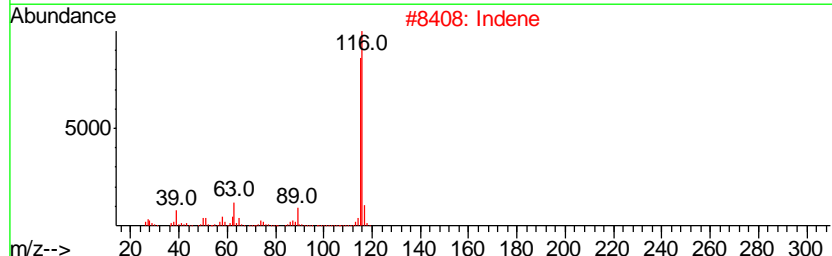
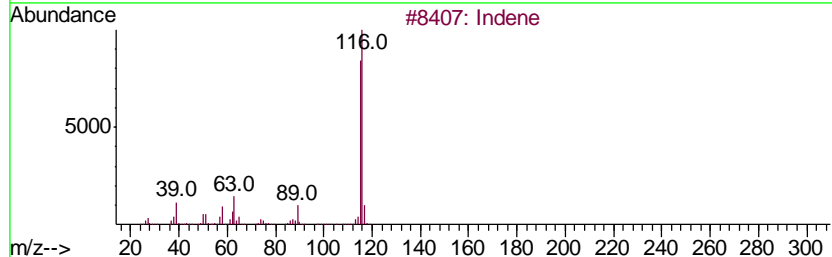
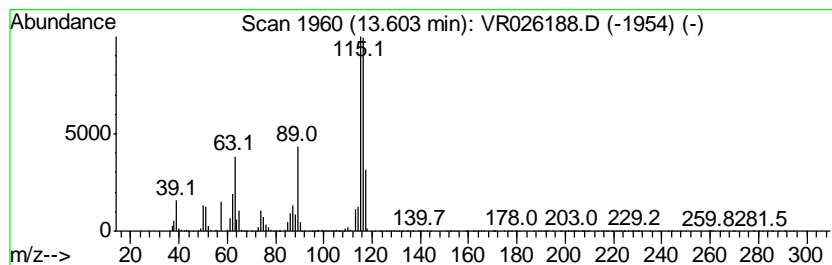
Quant Method : Z:\VOASRV\HPCHEM1\MSVOA_R\METHODS\SOMRTR101518WMA.M
 Quant Title : TRACE VOA SOM01.0

TIC Library : C:\DATABASE\NIST11.L
 TIC Integration Parameters: LSCINT.P

 Peak Number 16 Indene Concentration Rank 3

R.T.	EstConc	Area	Relative to ISTD	R.T.
13.60	15.09 ug/L	70642800	1,4-Dichlorobenzene-d4	13.23

Hit#	of	Tentative ID	MW	MolForm	CAS#	Qual
1	5	Indene	116	C9H8	000095-13-6	97
2		Indene	116	C9H8	000095-13-6	95
3		Indene	116	C9H8	000095-13-6	95
4		1-Propyne, 3-phenyl-	116	C9H8	010147-11-2	91
5		Benzene, 1-propynyl-	116	C9H8	000673-32-5	76



Data Path : Z:\voasrv\HPCHEM1\MSVOA R\Data\VR110618\
 Data File : VR026188.D
 Acq On : 6 Nov 2018 12:19
 Operator : SY/MD
 Sample : J5801-02
 Misc : 25mL/MSVOA R/WATER
 ALS Vial : 4 Sample Multiplier: 1

Instrument :
 MSVOA_R
 ClientSampled :
 F9D01

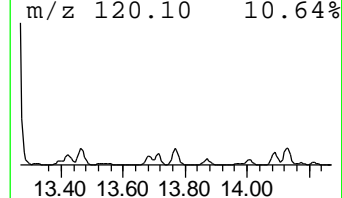
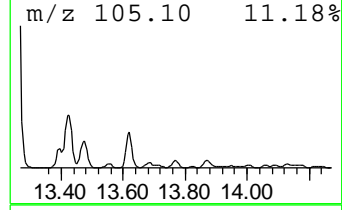
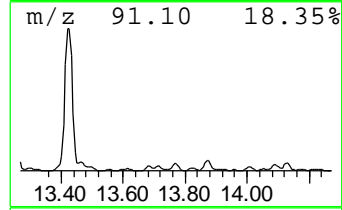
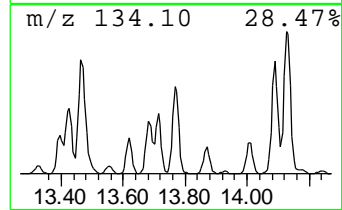
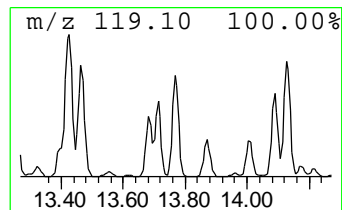
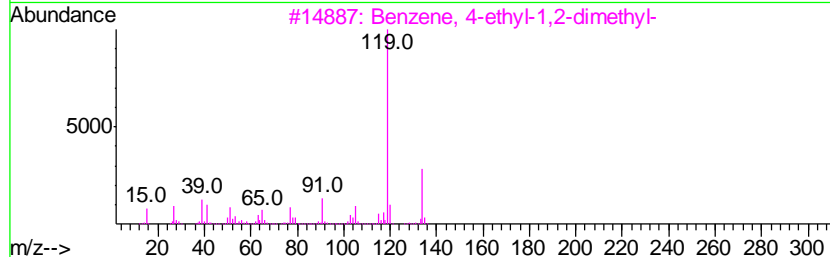
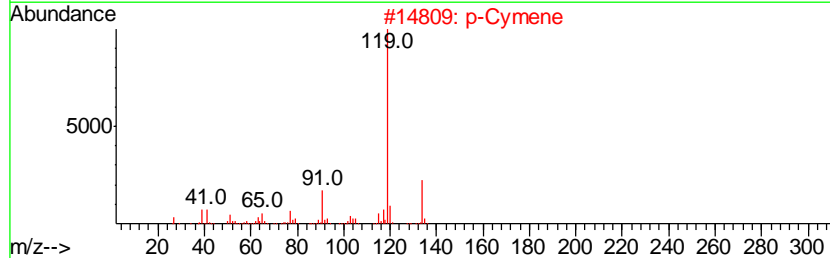
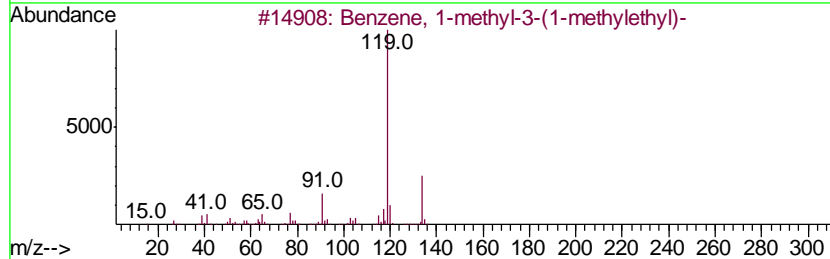
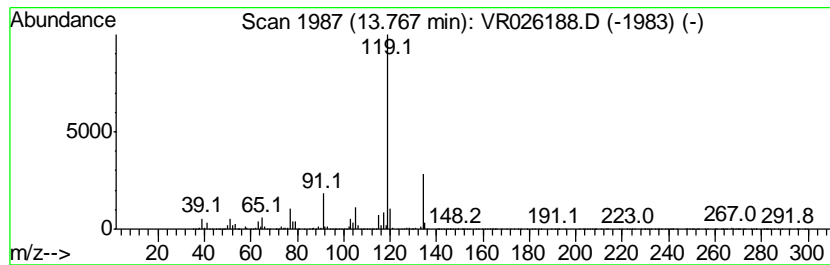
Quant Method : Z:\VOASRV\HPCHEM1\MSVOA_R\METHODS\SOMRTR101518WMA.M
 Quant Title : TRACE VOA SOM01.0

TIC Library : C:\DATABASE\NIST11.L
 TIC Integration Parameters: LSCINT.P

 Peak Number 17 Benzene, 1-methyl-3-(1-meth... Concentration Rank 31

R.T.	EstConc	Area	Relative to ISTD	R.T.
13.77	0.57 ug/L	2676840	1,4-Dichlorobenzene-d4	13.23

Hit#	of	Tentative ID	MW	MolForm	CAS#	Qual
1	5	Benzene, 1-methyl-3-(1-methyleth...	134	C10H14	000535-77-3	94
2		p-Cymene	134	C10H14	000099-87-6	94
3		Benzene, 4-ethyl-1,2-dimethyl-	134	C10H14	000934-80-5	93
4		Benzene, 1-methyl-3-(1-methyleth...	134	C10H14	000535-77-3	93
5		Benzene, 2-ethyl-1,4-dimethyl-	134	C10H14	001758-88-9	93



Data Path : Z:\voasrv\HPCHEM1\MSVOA R\Data\VR110618\
 Data File : VR026188.D
 Acq On : 6 Nov 2018 12:19
 Operator : SY/MD
 Sample : J5801-02
 Misc : 25mL/MSVOA R/WATER
 ALS Vial : 4 Sample Multiplier: 1

Instrument :
 MSVOA_R
 ClientSampled :
 F9D01

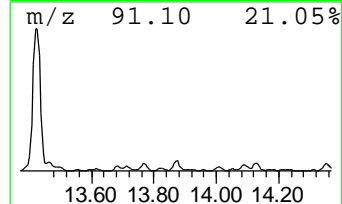
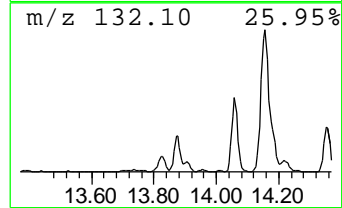
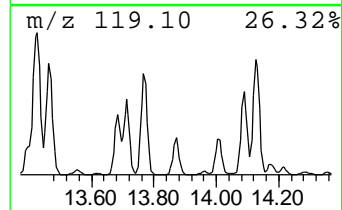
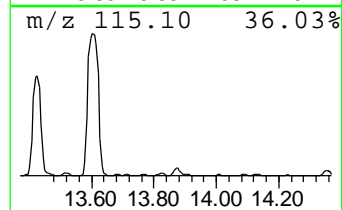
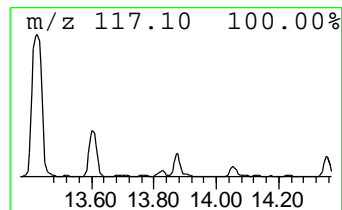
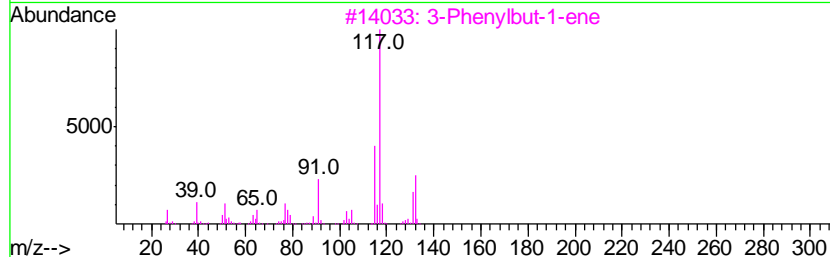
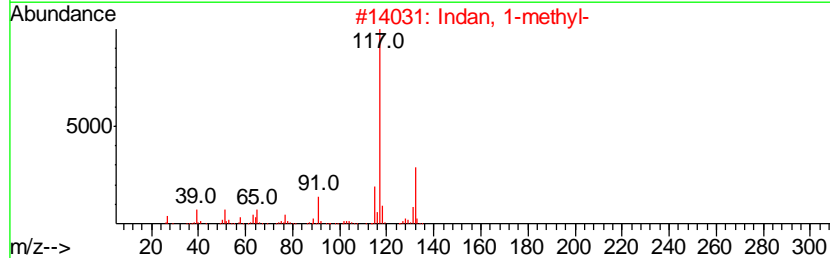
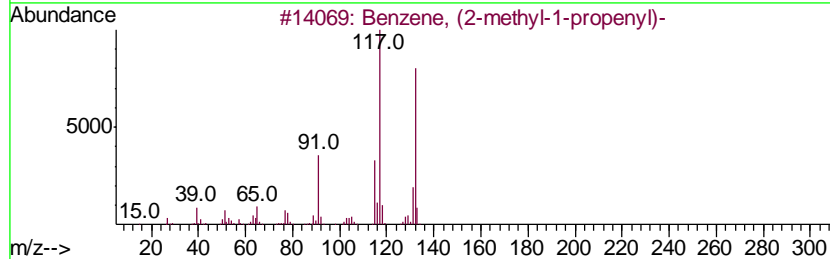
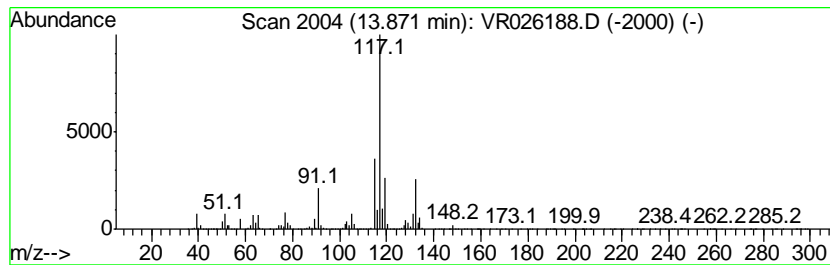
Quant Method : Z:\VOASRV\HPCHEM1\MSVOA_R\METHODS\SOMRTR101518WMA.M
 Quant Title : TRACE VOA SOM01.0

TIC Library : C:\DATABASE\NIST11.L
 TIC Integration Parameters: LSCINT.P

 Peak Number 18 Benzene, (2-methyl-1-propen... Concentration Rank 25

R.T.	EstConc	Area	Relative to ISTD	R.T.
13.87	1.16 ug/L	5412530	1,4-Dichlorobenzene-d4	13.23

Hit#	of	Tentative ID	MW	MolForm	CAS#	Qual
1	5	Benzene, (2-methyl-1-propenyl)-	132	C10H12	000768-49-0	87
2		Indan, 1-methyl-	132	C10H12	000767-58-8	81
3		3-Phenylbut-1-ene	132	C10H12	000934-10-1	81
4		Benzene, (1-methyl-1-propenyl)-,...	132	C10H12	000768-00-3	81
5		1-Phenyl-1-butene	132	C10H12	000824-90-8	81



Data Path : Z:\voasrv\HPCHEM1\MSVOA R\Data\VR110618\
 Data File : VR026188.D
 Acq On : 6 Nov 2018 12:19
 Operator : SY/MD
 Sample : J5801-02
 Misc : 25mL/MSVOA R/WATER
 ALS Vial : 4 Sample Multiplier: 1

Instrument :
 MSVOA_R
 ClientSampled :
 F9D01

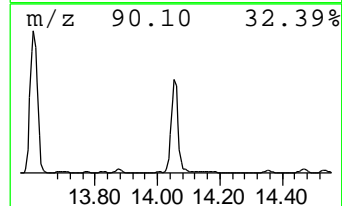
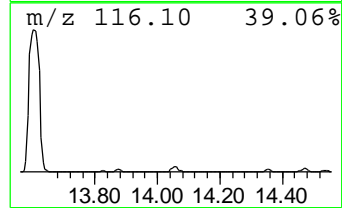
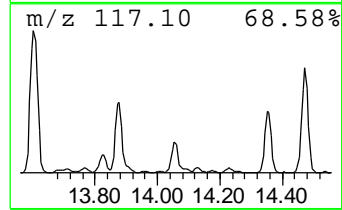
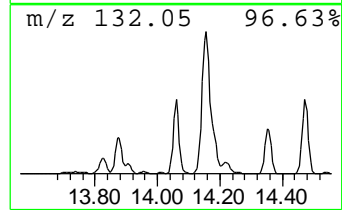
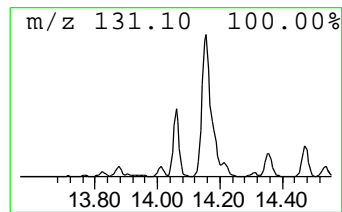
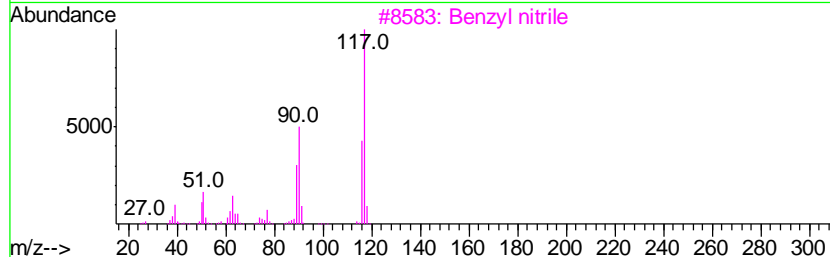
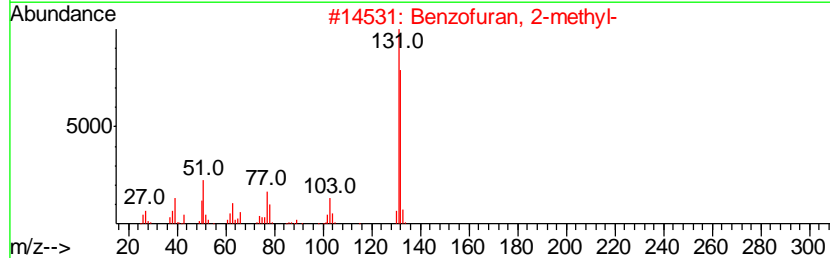
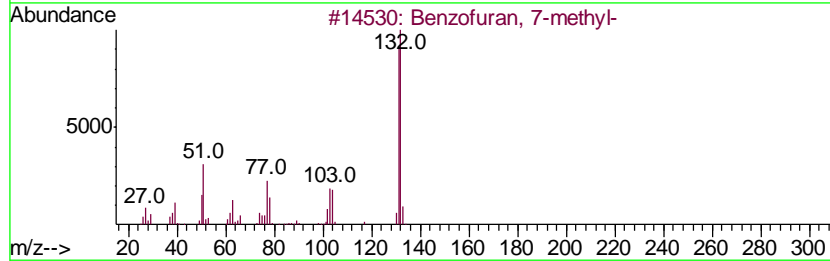
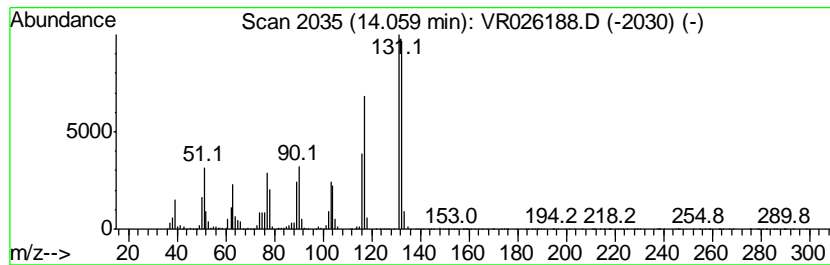
Quant Method : Z:\VOASRV\HPCHEM1\MSVOA_R\METHODS\SOMRTR101518WMA.M
 Quant Title : TRACE VOA SOM01.0

TIC Library : C:\DATABASE\NIST11.L
 TIC Integration Parameters: LSCINT.P

 Peak Number 19 Benzofuran, 7-methyl- Concentration Rank 23

R.T.	EstConc	Area	Relative to ISTD	R.T.
14.06	1.45 ug/L	6804210	1,4-Dichlorobenzene-d4	13.23

Hit#	of	Tentative ID	MW	MolForm	CAS#	Qual
1	5	Benzofuran, 7-methyl-	132	C9H8O	017059-52-8	83
2		Benzofuran, 2-methyl-	132	C9H8O	004265-25-2	78
3		Benzyl nitrile	117	C8H7N	000140-29-4	74
4		3-Phenyl-2-propyn-1-ol	132	C9H8O	001504-58-1	60
5		Benzonitrile, 3-methyl-	117	C8H7N	000620-22-4	59



Data Path : Z:\voasrv\HPCHEM1\MSVOA R\Data\VR110618\
 Data File : VR026188.D
 Acq On : 6 Nov 2018 12:19
 Operator : SY/MD
 Sample : J5801-02
 Misc : 25mL/MSVOA R/WATER
 ALS Vial : 4 Sample Multiplier: 1

Instrument :
 MSVOA_R
 ClientSampleID :
 F9D01

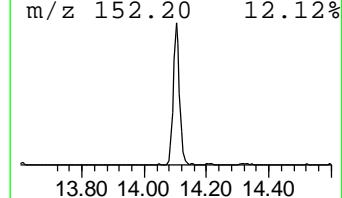
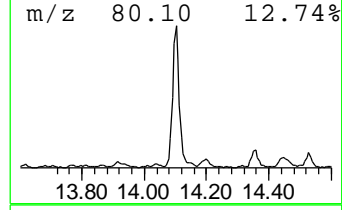
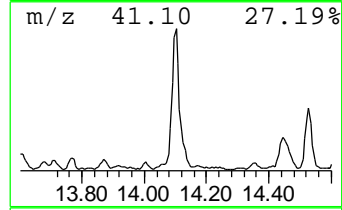
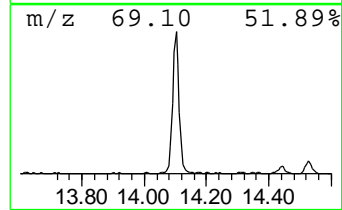
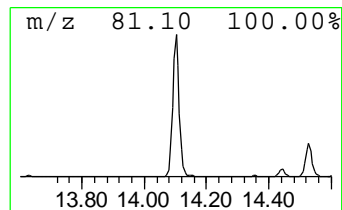
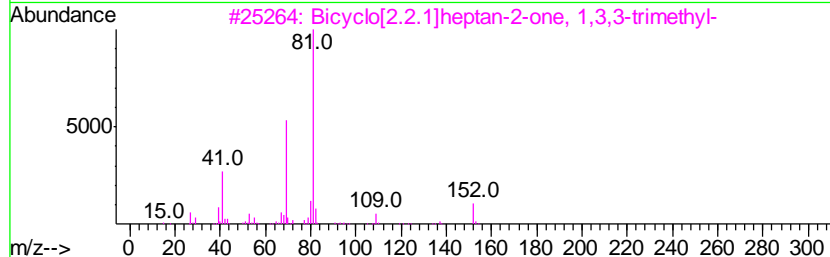
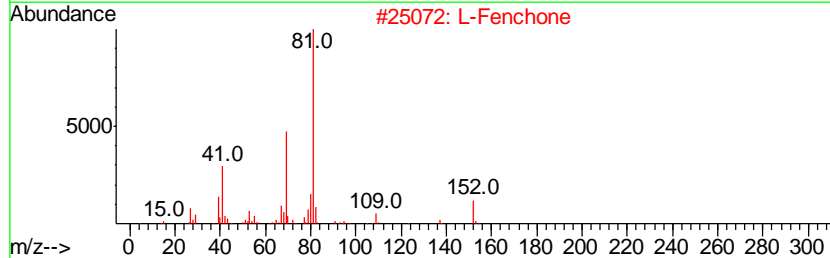
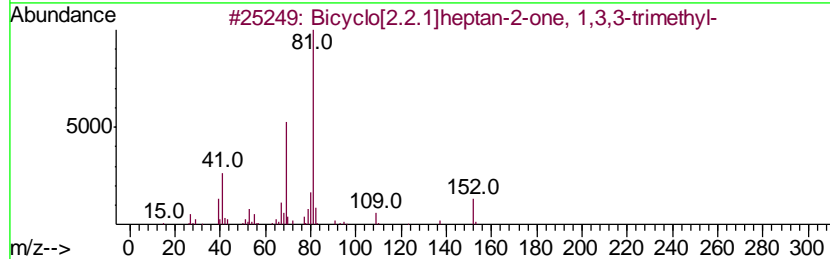
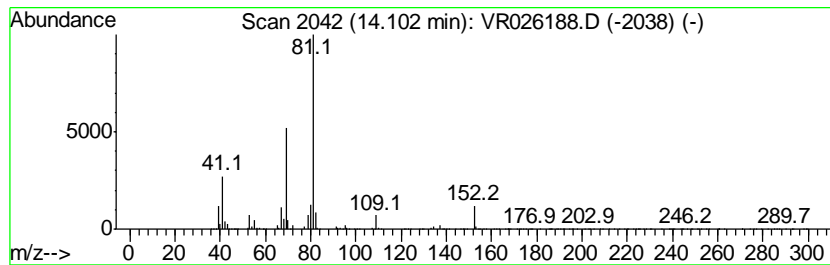
Quant Method : Z:\VOASRV\HPCHEM1\MSVOA_R\METHODS\SOMRTR101518WMA.M
 Quant Title : TRACE VOA SOM01.0

TIC Library : C:\DATABASE\NIST11.L
 TIC Integration Parameters: LSCINT.P

 Peak Number 20 Bicyclo[2.2.1]heptan-2-one,... Concentration Rank 22

R.T.	EstConc	Area	Relative to ISTD	R.T.
14.10	1.54 ug/L	7200930	1,4-Dichlorobenzene-d4	13.23

Hit#	of	Tentative ID	MW	MolForm	CAS#	Qual
1	5	Bicyclo[2.2.1]heptan-2-one, 1,3,...	152	C10H16O	001195-79-5	94
2		L-Fenchone	152	C10H16O	007787-20-4	94
3		Bicyclo[2.2.1]heptan-2-one, 1,3,...	152	C10H16O	001195-79-5	93
4		D-Fenchone	152	C10H16O	004695-62-9	81
5		L-Fenchone	152	C10H16O	007787-20-4	81



Data Path : Z:\voasrv\HPCHEM1\MSVOA R\Data\VR110618\
 Data File : VR026188.D
 Acq On : 6 Nov 2018 12:19
 Operator : SY/MD
 Sample : J5801-02
 Misc : 25mL/MSVOA R/WATER
 ALS Vial : 4 Sample Multiplier: 1

Instrument :
 MSVOA_R
 ClientSampleID :
 F9D01

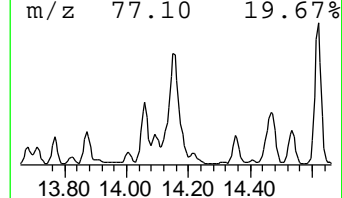
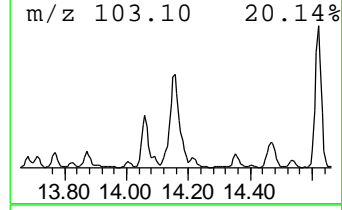
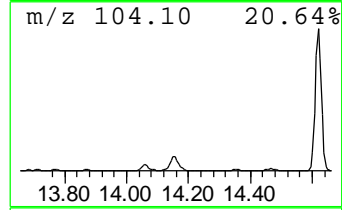
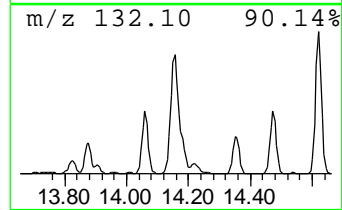
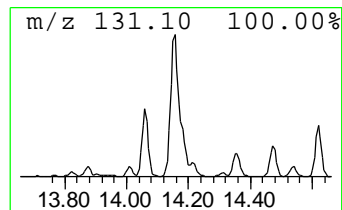
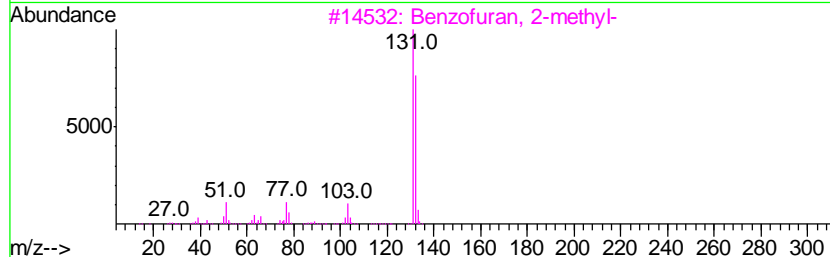
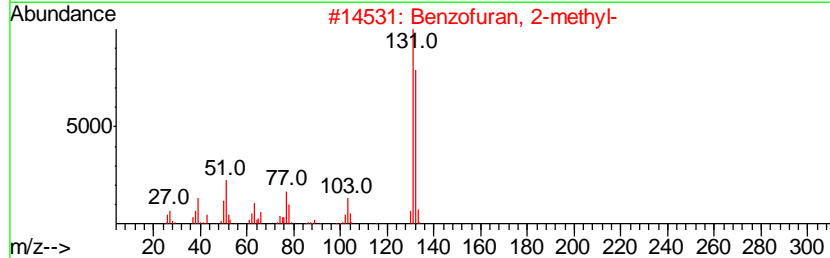
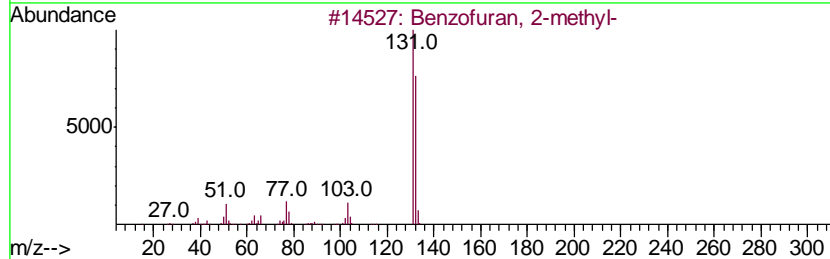
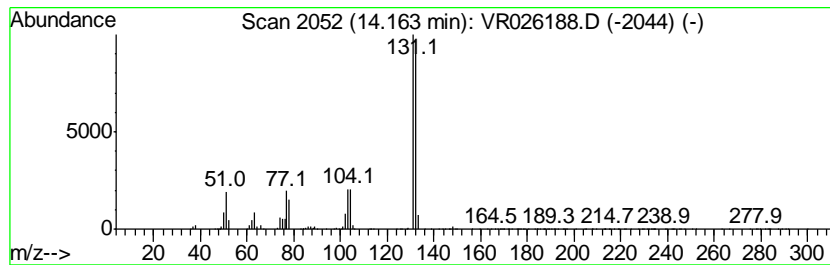
Quant Method : Z:\VOASRV\HPCHEM1\MSVOA_R\METHODS\SOMRTR101518WMA.M
 Quant Title : TRACE VOA SOM01.0

TIC Library : C:\DATABASE\NIST11.L
 TIC Integration Parameters: LSCINT.P

 Peak Number 21 Benzofuran, 2-methyl- Concentration Rank 17

R.T.	EstConc	Area	Relative to ISTD	R.T.
14.16	3.07 ug/L	14346500	1,4-Dichlorobenzene-d4	13.23

Hit#	of	Tentative ID	MW	MolForm	CAS#	Qual
1	5	Benzofuran, 2-methyl-	132	C9H8O	004265-25-2	94
2		Benzofuran, 2-methyl-	132	C9H8O	004265-25-2	94
3		Benzofuran, 2-methyl-	132	C9H8O	004265-25-2	91
4		Cinnamaldehyde, (E)-	132	C9H8O	014371-10-9	90
5		3-Phenyl-2-propyn-1-ol	132	C9H8O	001504-58-1	87



Data Path : Z:\voasrv\HPCHEM1\MSVOA R\Data\VR110618\
 Data File : VR026188.D
 Acq On : 6 Nov 2018 12:19
 Operator : SY/MD
 Sample : J5801-02
 Misc : 25mL/MSVOA R/WATER
 ALS Vial : 4 Sample Multiplier: 1

Instrument :
 MSVOA_R
 ClientSampleId :
 F9D01

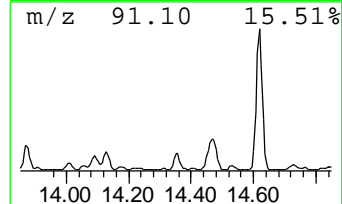
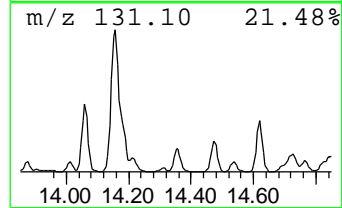
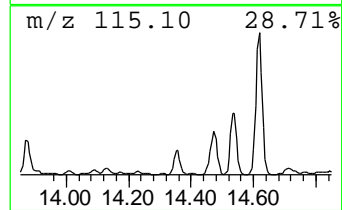
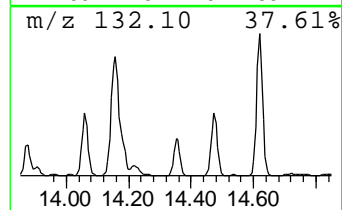
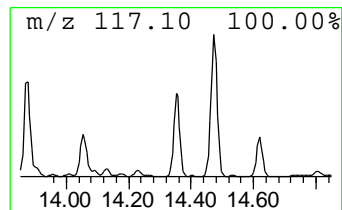
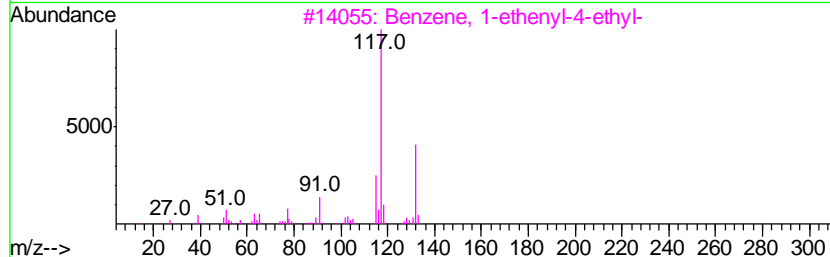
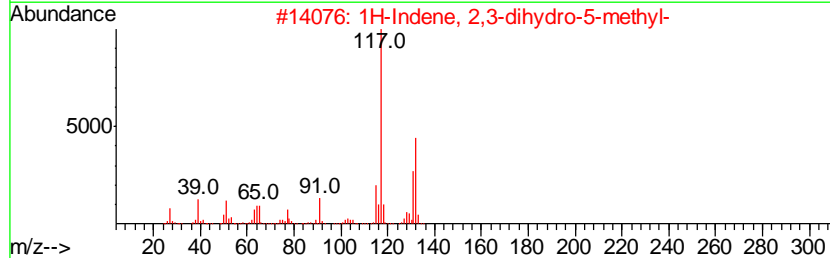
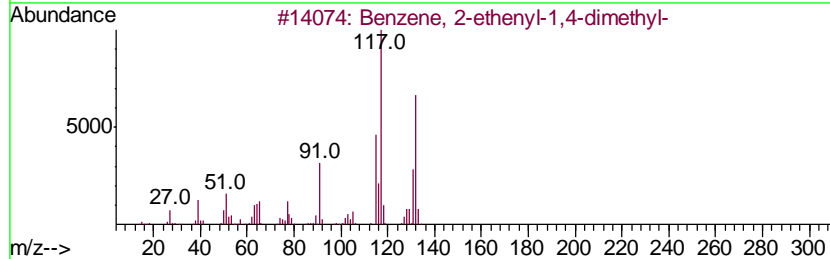
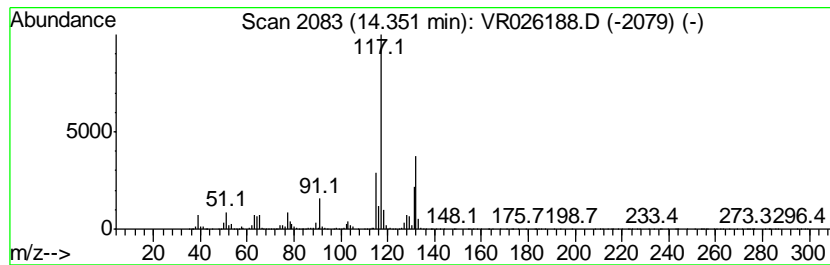
Quant Method : Z:\VOASRV\HPCHEM1\MSVOA_R\METHODS\SOMRTR101518WMA.M
 Quant Title : TRACE VOA SOM01.0

TIC Library : C:\DATABASE\NIST11.L
 TIC Integration Parameters: LSCINT.P

 Peak Number 22 Benzene, 2-ethenyl-1,4-dime... Concentration Rank 26

R.T.	EstConc	Area	Relative to ISTD	R.T.
14.35	0.97 ug/L	4552590	1,4-Dichlorobenzene-d4	13.23

Hit#	of	Tentative ID	MW	MolForm	CAS#	Qual
1	5	Benzene, 2-ethenyl-1,4-dimethyl-	132	C10H12	002039-89-6	96
2		1H-Indene, 2,3-dihydro-5-methyl-	132	C10H12	000874-35-1	94
3		Benzene, 1-ethenyl-4-ethyl-	132	C10H12	003454-07-7	94
4		1H-Indene, 2,3-dihydro-4-methyl-	132	C10H12	000824-22-6	94
5		3-Phenylbut-1-ene	132	C10H12	000934-10-1	94



Data Path : Z:\voasrv\HPCHEM1\MSVOA R\Data\VR110618\
 Data File : VR026188.D
 Acq On : 6 Nov 2018 12:19
 Operator : SY/MD
 Sample : J5801-02
 Misc : 25mL/MSVOA R/WATER
 ALS Vial : 4 Sample Multiplier: 1

Instrument :
 MSVOA_R
 ClientSampled :
 F9D01

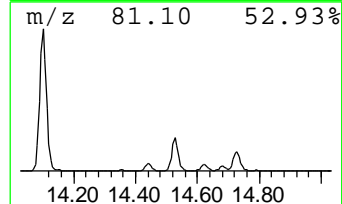
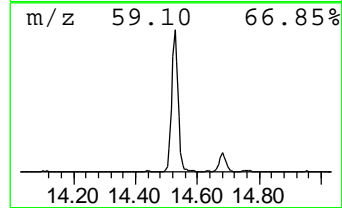
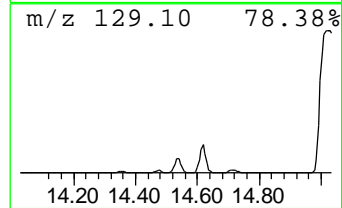
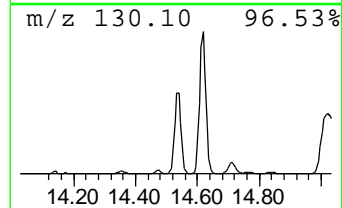
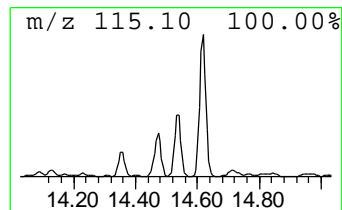
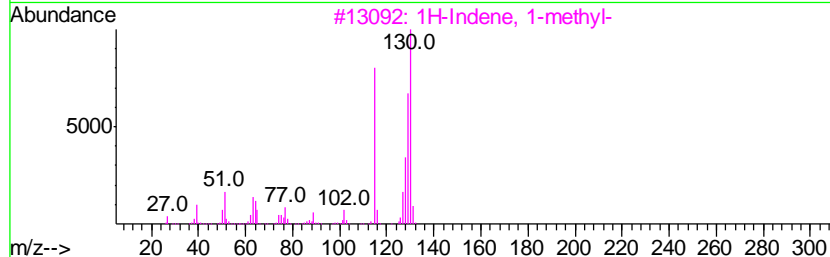
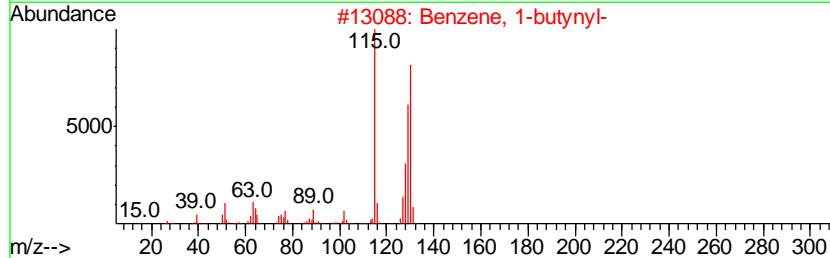
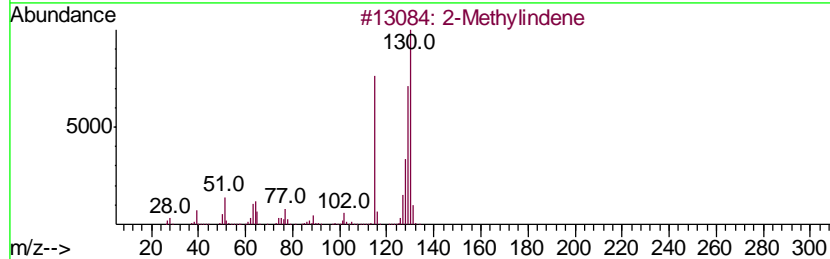
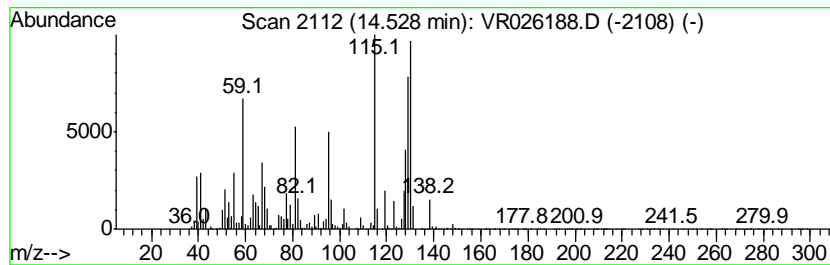
Quant Method : Z:\VOASRV\HPCHEM1\MSVOA_R\METHODS\SOMRTR101518WMA.M
 Quant Title : TRACE VOA SOM01.0

TIC Library : C:\DATABASE\NIST11.L
 TIC Integration Parameters: LSCINT.P

 Peak Number 24 2-Methylindene Concentration Rank 20

R.T.	EstConc	Area	Relative to ISTD	R.T.
14.53	1.77 ug/L	8306830	1,4-Dichlorobenzene-d4	13.23

Hit#	of	Tentative ID	MW	MolForm	CAS#	Qual
1	5	2-Methylindene	130	C10H10	002177-47-1	96
2		Benzene, 1-butynyl-	130	C10H10	000622-76-4	96
3		1H-Indene, 1-methyl-	130	C10H10	000767-59-9	96
4		Benzene, (1-methyl-2-cyclopropen...	130	C10H10	065051-83-4	94
5		Cycloprop[alindene, 1,1a,6,6a-te...	130	C10H10	015677-15-3	90



Data Path : Z:\voasrv\HPCHEM1\MSVOA R\Data\VR110618\
 Data File : VR026188.D
 Acq On : 6 Nov 2018 12:19
 Operator : SY/MD
 Sample : J5801-02
 Misc : 25mL/MSVOA R/WATER
 ALS Vial : 4 Sample Multiplier: 1

Instrument :
 MSVOA_R
 ClientSampled :
 F9D01

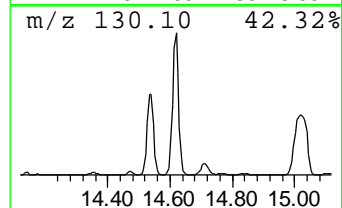
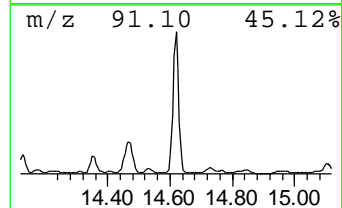
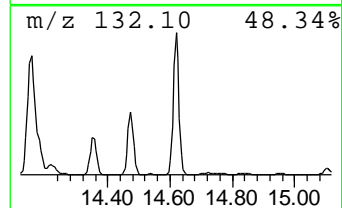
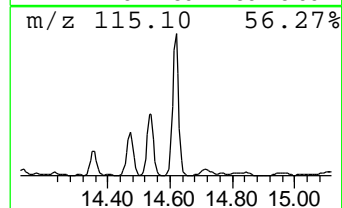
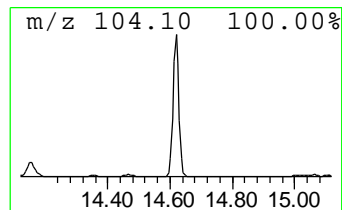
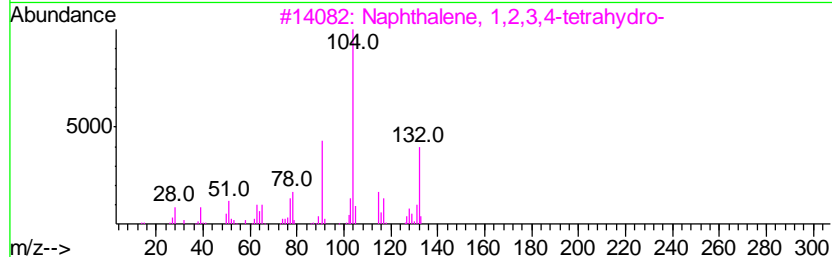
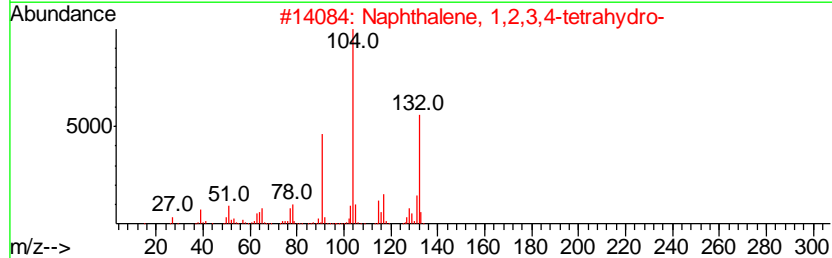
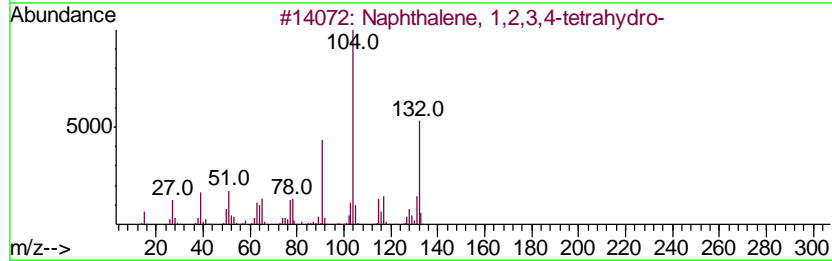
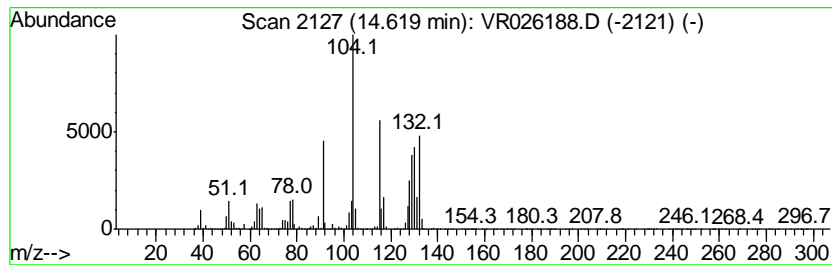
Quant Method : Z:\VOASRV\HPCHEM1\MSVOA_R\METHODS\SOMRTR101518WMA.M
 Quant Title : TRACE VOA SOM01.0

TIC Library : C:\DATABASE\NIST11.L
 TIC Integration Parameters: LSCINT.P

 Peak Number 25 Naphthalene, 1,2,3,4-tetra... Concentration Rank 11

R.T.	EstConc	Area	Relative to ISTD	R.T.
14.62	5.00 ug/L	23388800	1,4-Dichlorobenzene-d4	13.23

Hit#	of	Tentative ID	MW	MolForm	CAS#	Qual
1	5	Naphthalene, 1,2,3,4-tetrahydro-	132	C10H12	000119-64-2	95
2		Naphthalene, 1,2,3,4-tetrahydro-	132	C10H12	000119-64-2	91
3		Naphthalene, 1,2,3,4-tetrahydro-	132	C10H12	000119-64-2	90
4		Naphthalene, 1,2,3,4-tetrahydro-	132	C10H12	000119-64-2	55
5		Benzene, 1-methyl-1,2-propadienyl-	130	C10H10	022433-39-2	42



Data Path : Z:\voasrv\HPCHEM1\MSVOA R\Data\VR110618\
 Data File : VR026188.D
 Acq On : 6 Nov 2018 12:19
 Operator : SY/MD
 Sample : J5801-02
 Misc : 25mL/MSVOA R/WATER
 ALS Vial : 4 Sample Multiplier: 1

Instrument :
 MSVOA_R
 ClientSampled :
 F9D01

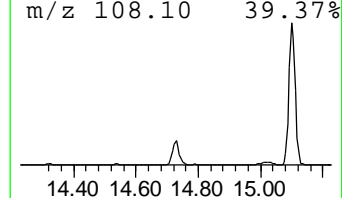
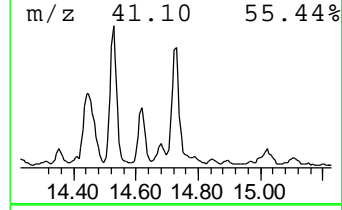
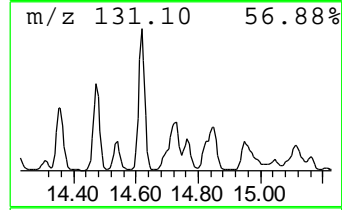
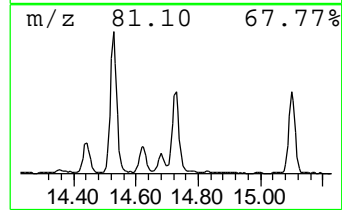
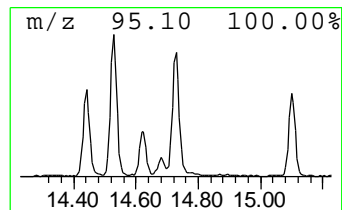
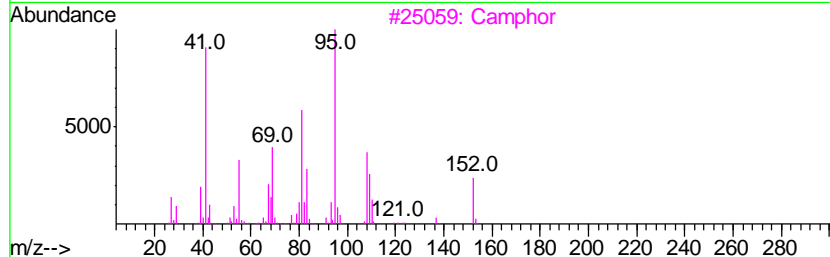
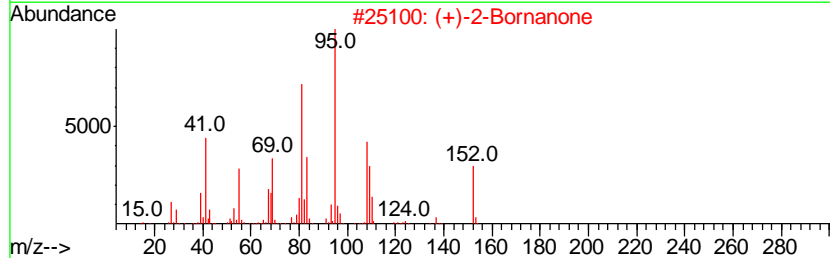
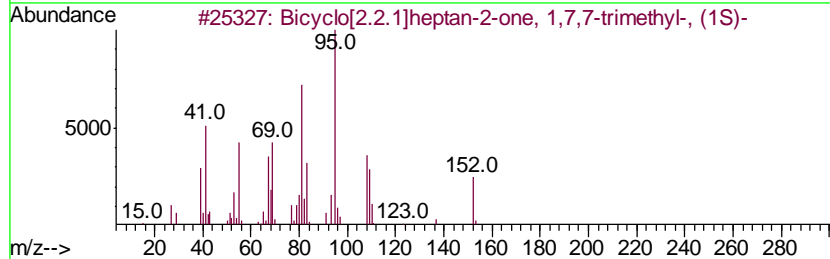
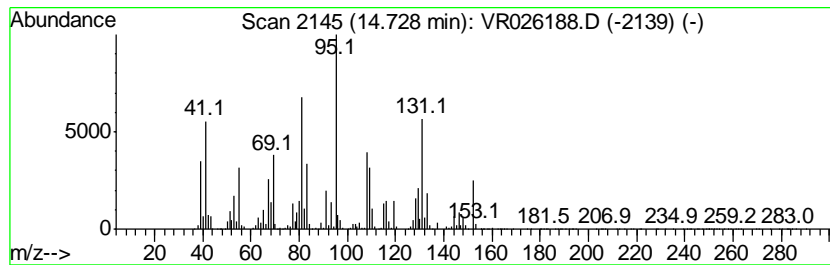
Quant Method : Z:\VOASRV\HPCHEM1\MSVOA_R\METHODS\SOMRTR101518WMA.M
 Quant Title : TRACE VOA SOM01.0

TIC Library : C:\DATABASE\NIST11.L
 TIC Integration Parameters: LSCINT.P

 Peak Number 26 Bicyclo[2.2.1]heptan-2-one,... Concentration Rank 29

R.T.	EstConc	Area	Relative to ISTD	R.T.
14.73	0.65 ug/L	3042510	1,4-Dichlorobenzene-d4	13.23

Hit#	of	Tentative ID	MW	MolForm	CAS#	Qual
1	5	Bicyclo[2.2.1]heptan-2-one, 1,7,...	152	C10H16O	000464-48-2	96
2		(+)-2-Bornanone	152	C10H16O	000464-49-3	95
3		Camphor	152	C10H16O	000076-22-2	95
4		(+)-2-Bornanone	152	C10H16O	000464-49-3	95
5		Camphor	152	C10H16O	000076-22-2	95



Data Path : Z:\voasrv\HPCHEM1\MSVOA R\Data\VR110618\
 Data File : VR026188.D
 Acq On : 6 Nov 2018 12:19
 Operator : SY/MD
 Sample : J5801-02
 Misc : 25mL/MSVOA R/WATER
 ALS Vial : 4 Sample Multiplier: 1

Instrument :
 MSVOA_R
 ClientSampled :
 F9D01

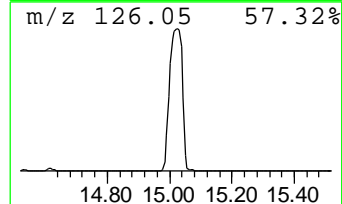
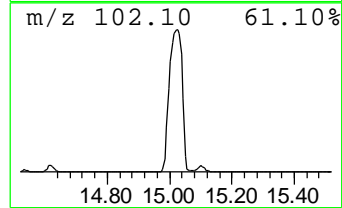
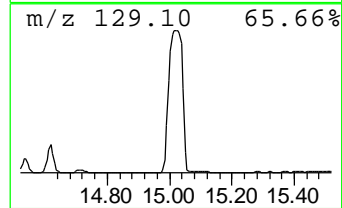
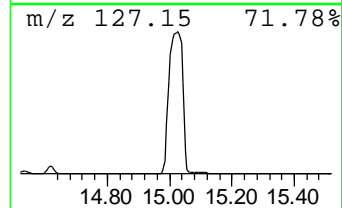
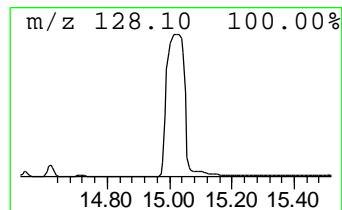
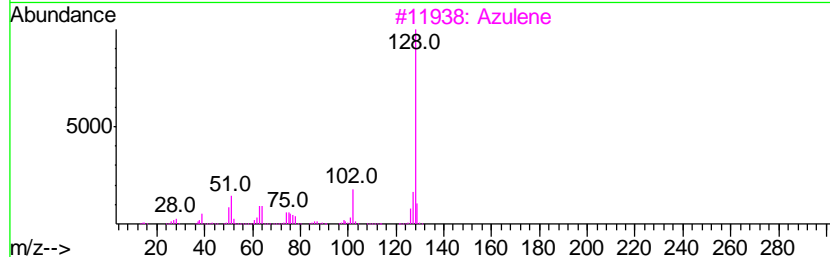
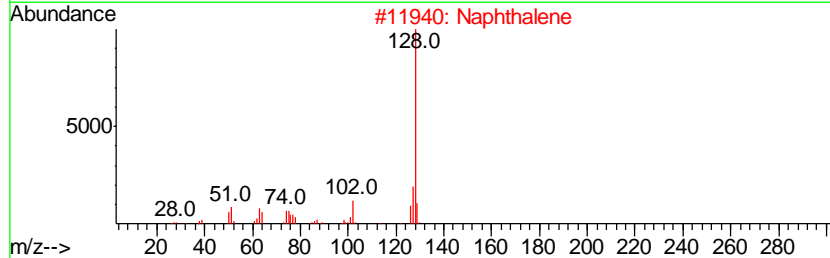
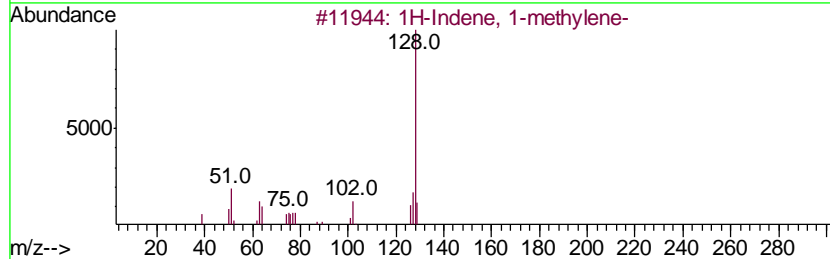
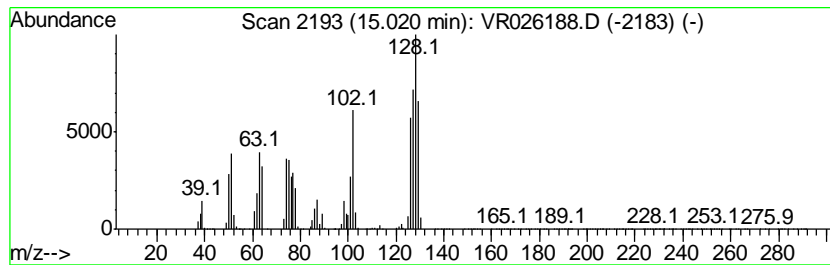
Quant Method : Z:\VOASRV\HPCHEM1\MSVOA_R\METHODS\SOMRTR101518WMA.M
 Quant Title : TRACE VOA SOM01.0

TIC Library : C:\DATABASE\NIST11.L
 TIC Integration Parameters: LSCINT.P

 Peak Number 27 1H-Indene, 1-methylene- Concentration Rank 1

R.T.	EstConc	Area	Relative to ISTD	R.T.
15.02	44.25 ug/L	207089000	1,4-Dichlorobenzene-d4	13.23

Hit#	of	Tentative ID	MW	MolForm	CAS#	Qual
1	5	1H-Indene, 1-methylene-	128	C10H8	002471-84-3	86
2		Naphthalene	128	C10H8	000091-20-3	81
3		Azulene	128	C10H8	000275-51-4	81
4		4-Phenylbut-3-ene-1-yne	128	C10H8	1000222-12-0	81
5		Azulene	128	C10H8	000275-51-4	76



Data Path : Z:\voasrv\HPCHEM1\MSVOA R\Data\VR110618\
 Data File : VR026188.D
 Acq On : 6 Nov 2018 12:19
 Operator : SY/MD
 Sample : J5801-02
 Misc : 25mL/MSVOA R/WATER
 ALS Vial : 4 Sample Multiplier: 1

Instrument :
 MSVOA_R
 ClientSampled :
 F9D01

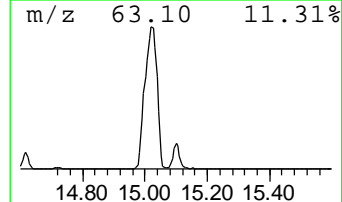
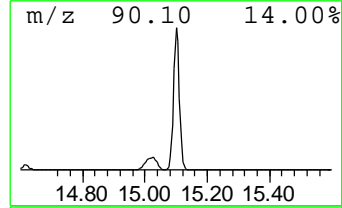
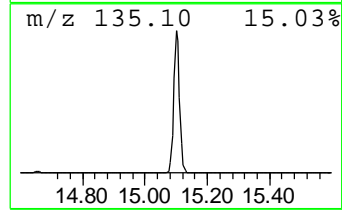
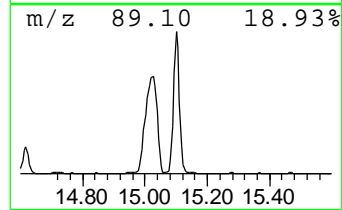
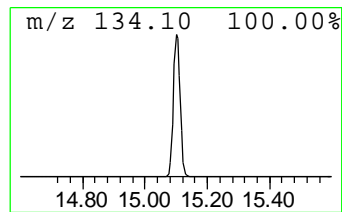
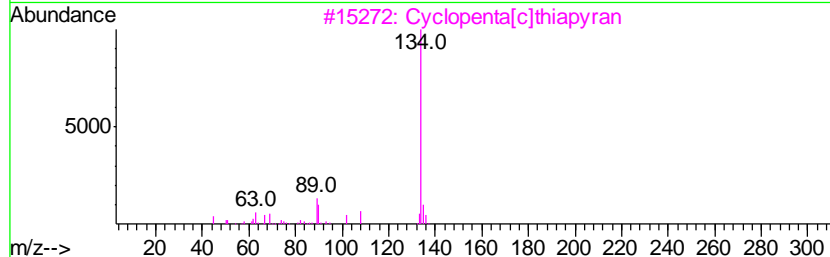
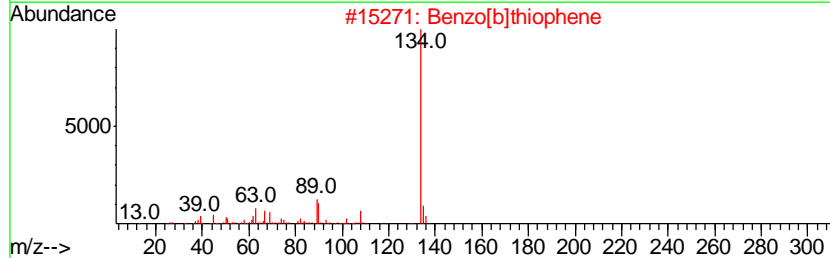
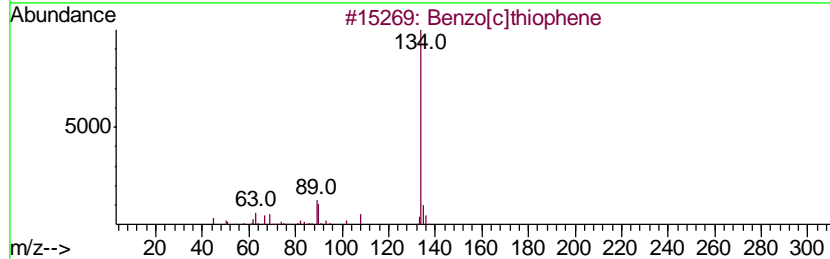
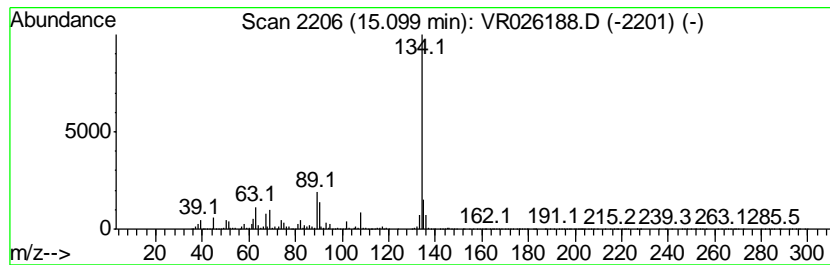
Quant Method : Z:\VOASRV\HPCHEM1\MSVOA_R\METHODS\SOMRTR101518WMA.M
 Quant Title : TRACE VOA SOM01.0

TIC Library : C:\DATABASE\NIST11.L
 TIC Integration Parameters: LSCINT.P

 Peak Number 28 Benzo[c]thiophene Concentration Rank 10

R.T.	EstConc	Area	Relative to ISTD	R.T.
15.10	5.19 ug/L	24276700	1,4-Dichlorobenzene-d4	13.23

Hit#	of	Tentative ID	MW	MolForm	CAS#	Qual
1	5	Benzo[c]thiophene	134	C8H6S	000270-82-6	96
2		Benzo[b]thiophene	134	C8H6S	000095-15-8	94
3		Cyclopenta[c]thiapyran	134	C8H6S	000270-63-3	91
4		Benzo[b]thiophene	134	C8H6S	000095-15-8	91
5		Benzo[b]thiophene	134	C8H6S	000095-15-8	91



Data Path : Z:\voasrv\HPCHEM1\MSVOA R\Data\VR110618\
 Data File : VR026188.D
 Acq On : 6 Nov 2018 12:19
 Operator : SY/MD
 Sample : J5801-02
 Misc : 25mL/MSVOA R/WATER
 ALS Vial : 4 Sample Multiplier: 1

Instrument :
 MSVOA_R
 ClientSampleId :
 F9D01

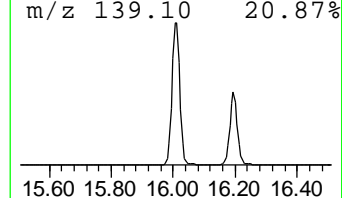
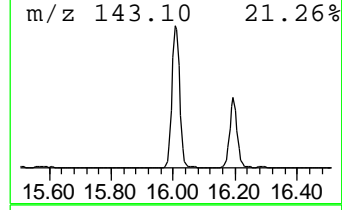
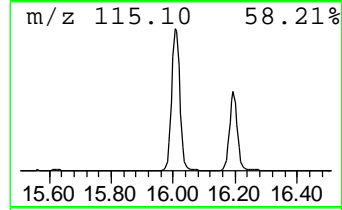
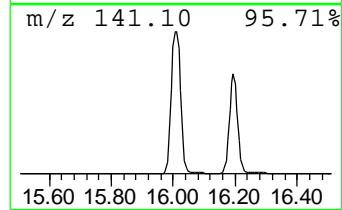
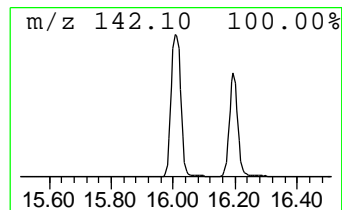
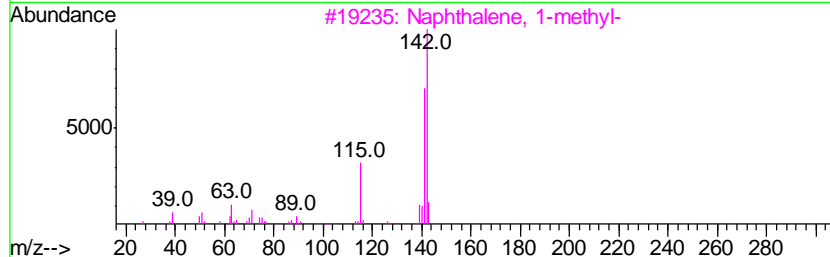
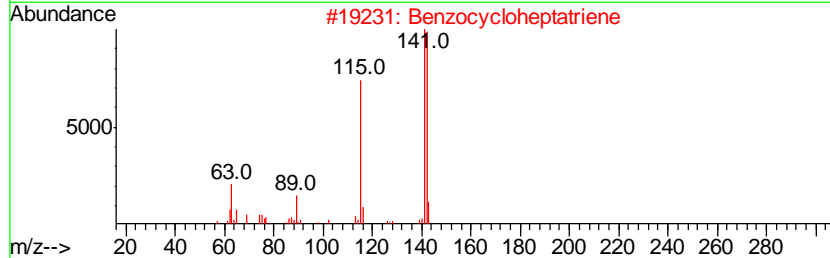
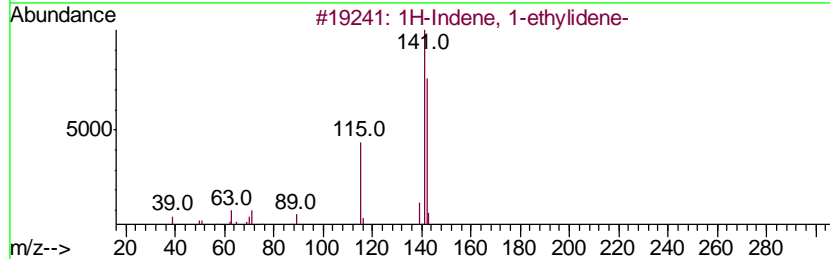
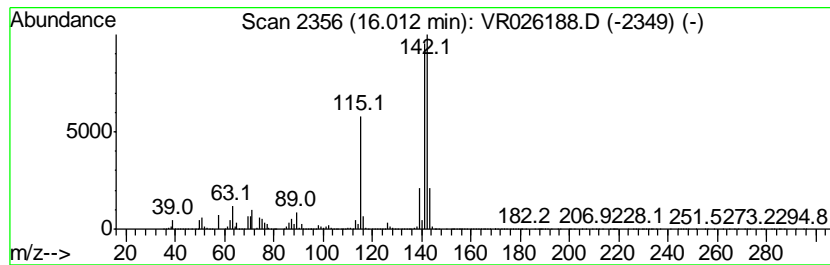
Quant Method : Z:\VOASRV\HPCHEM1\MSVOA_R\METHODS\SOMRTR101518WMA.M
 Quant Title : TRACE VOA SOM01.0

TIC Library : C:\DATABASE\NIST11.L
 TIC Integration Parameters: LSCINT.P

 Peak Number 29 1H-Indene, 1-ethylidene- Concentration Rank 6

R.T.	EstConc	Area	Relative to ISTD	R.T.
16.01	10.74 ug/L	50282300	1,4-Dichlorobenzene-d4	13.23

Hit#	of	Tentative ID	MW	MolForm	CAS#	Qual
1	5	1H-Indene, 1-ethylidene-	142	C11H10	002471-83-2	93
2		Benzocycloheptatriene	142	C11H10	000264-09-5	93
3		Naphthalene, 1-methyl-	142	C11H10	000090-12-0	90
4		Naphthalene, 2-methyl-	142	C11H10	000091-57-6	90
5		Bicyclo[4.4.1]undeca-1,3,5,7,9-p...	142	C11H10	002443-46-1	90



Data Path : Z:\voasrv\HPCHEM1\MSVOA R\Data\VR110618\
 Data File : VR026188.D
 Acq On : 6 Nov 2018 12:19
 Operator : SY/MD
 Sample : J5801-02
 Misc : 25mL/MSVOA R/WATER
 ALS Vial : 4 Sample Multiplier: 1

Instrument :
 MSVOA_R
 ClientSampleID :
 F9D01

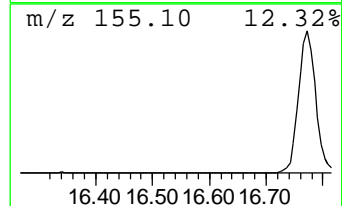
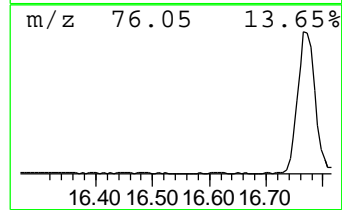
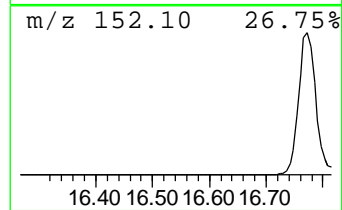
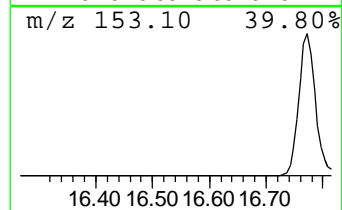
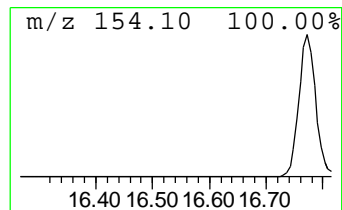
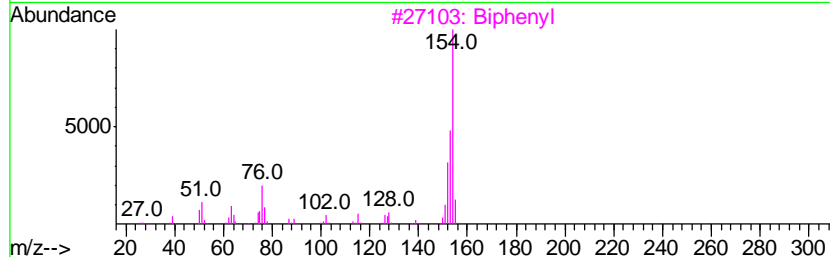
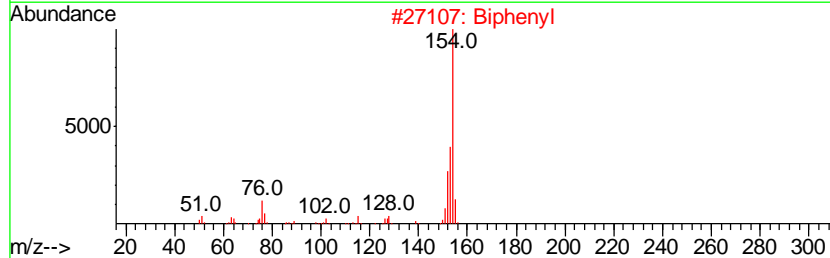
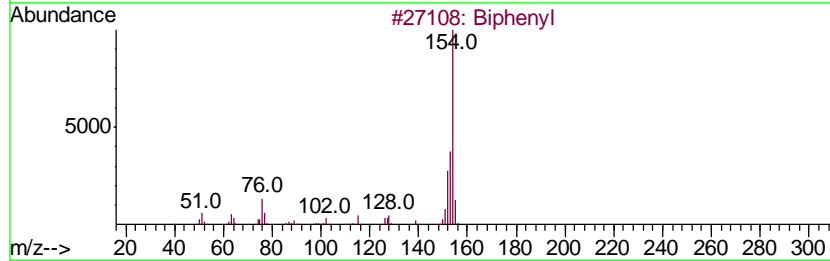
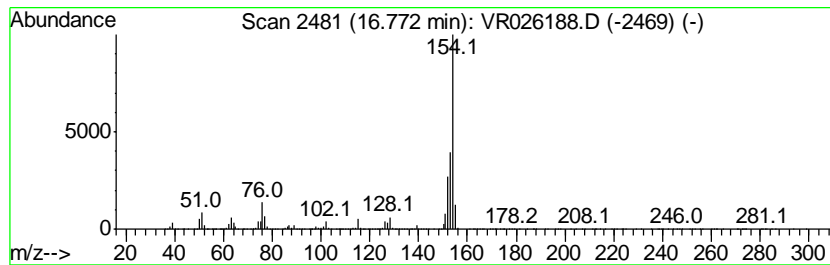
Quant Method : Z:\VOASRV\HPCHEM1\MSVOA_R\METHODS\SOMRTR101518WMA.M
 Quant Title : TRACE VOA SOM01.0

TIC Library : C:\DATABASE\NIST11.L
 TIC Integration Parameters: LSCINT.P

 Peak Number 31 Biphenyl Concentration Rank 24

R.T.	EstConc	Area	Relative to ISTD	R.T.
16.77	1.18 ug/L	5511330	1,4-Dichlorobenzene-d4	13.23

Hit#	of	Tentative ID	MW	MolForm	CAS#	Qual
1	5	Biphenyl	154	C12H10	000092-52-4	95
2		Biphenyl	154	C12H10	000092-52-4	95
3		Biphenyl	154	C12H10	000092-52-4	95
4		Naphthalene, 2-ethenyl-	154	C12H10	000827-54-3	94
5		Biphenyl	154	C12H10	000092-52-4	94



Data Path : Z:\voasrv\HPCHEM1\MSVOA_R\Data\VR110618\
 Data File : VR026188.D
 Acq On : 6 Nov 2018 12:19
 Operator : SY/MD
 Sample : J5801-02
 Misc : 25mL/MSVOA_R/WATER
 ALS Vial : 4 Sample Multiplier: 1

Instrument :
 MSVOA_R
 ClientSampleId :
 F9D01

Quant Method : Z:\VOASRV\HPCHEM1\MSVOA_R\METHODS\SOMRTR101518WMA.M
 Quant Title : TRACE VOA SOM01.0

TIC Library : C:\DATABASE\NIST11.L
 TIC Integration Parameters: LSCINT.P

TIC Top Hit name	RT	EstConc	Units	Response	--Internal Standard--			
					#	RT	Resp	Conc
(DEL) Alkane: Str...	3.05	4.7	ug/L	2365960	1	8.46	2537120	5.0
(DEL) Alkane: Cyc...	4.48	9.4	ug/L	4779610	1	8.46	2537120	5.0
(DEL) Alkane: Cyc...	6.47	10.8	ug/L	5464750	1	8.46	2537120	5.0
Thiophene	8.16	14.5	ug/L	7338670	1	8.46	2537120	5.0
Thiophene, 2-methyl-	10.14	3.3	ug/L	2286060	2	11.29	3440160	5.0
Thiophene, 3-methyl-	10.30	3.2	ug/L	2176960	2	11.29	3440160	5.0
Benzene, propyl-	12.47	0.7	ug/L	3279800	3	13.23	23401500	5.0
Benzene, 1-ethyl-...	12.54	4.6	ug/L	21490100	3	13.23	23401500	5.0
Benzene, 1-ethyl-...	12.57	1.6	ug/L	7580540	3	13.23	23401500	5.0
Benzene, 1,2,3-tr...	12.62	4.1	ug/L	19251800	3	13.23	23401500	5.0
Benzene, 1-etheny...	12.97	0.7	ug/L	3432880	3	13.23	23401500	5.0
Benzene, 1-etheny...	13.43	15.3	ug/L	71639800	3	13.23	23401500	5.0
Benzene, 1-ethyl-...	13.46	0.7	ug/L	3037590	3	13.23	23401500	5.0
Indene	13.60	15.1	ug/L	70642800	3	13.23	23401500	5.0
Benzene, 1-methyl...	13.77	0.6	ug/L	2676840	3	13.23	23401500	5.0
Benzene, (2-methy...	13.87	1.2	ug/L	5412530	3	13.23	23401500	5.0
Benzofuran, 7-met...	14.06	1.5	ug/L	6804210	3	13.23	23401500	5.0
Bicyclo[2.2.1]hep...	14.10	1.5	ug/L	7200930	3	13.23	23401500	5.0
Benzofuran, 2-met...	14.16	3.1	ug/L	14346500	3	13.23	23401500	5.0
Benzene, 2-etheny...	14.35	1.0	ug/L	4552590	3	13.23	23401500	5.0
2-Methylindene	14.53	1.8	ug/L	8306830	3	13.23	23401500	5.0
Naphthalene, 1,2,...	14.62	5.0	ug/L	23388800	3	13.23	23401500	5.0
Bicyclo[2.2.1]hep...	14.73	0.7	ug/L	3042510	3	13.23	23401500	5.0
1H-Indene, 1-meth...	15.02	44.3	ug/L	207089000	3	13.23	23401500	5.0
Benzo[c]thiophene	15.10	5.2	ug/L	24276700	3	13.23	23401500	5.0
1H-Indene, 1-ethy...	16.01	10.7	ug/L	50282300	3	13.23	23401500	5.0
Biphenyl	16.77	1.2	ug/L	5511330	3	13.23	23401500	5.0