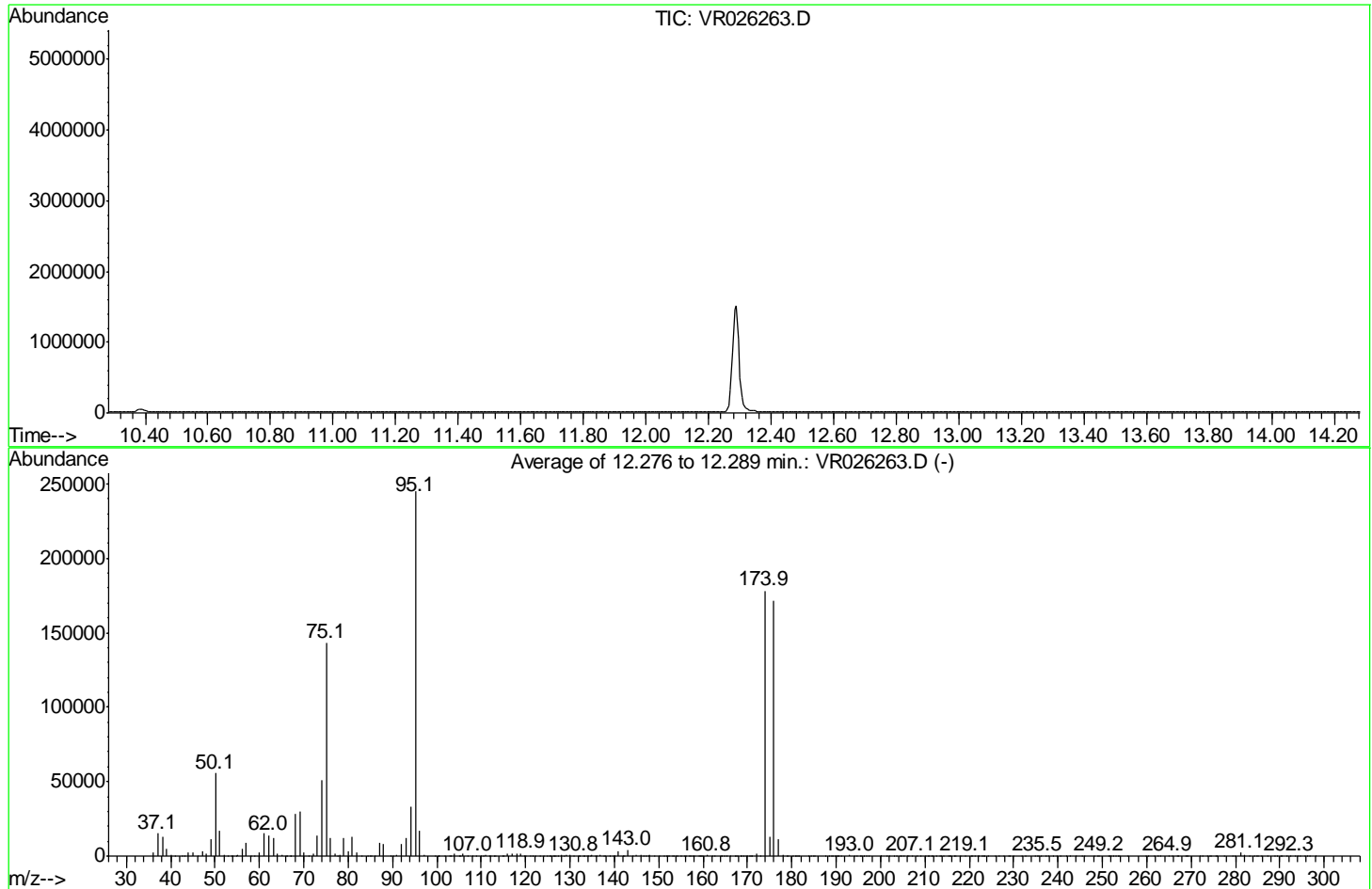


Data Path : Z:\voasrv\HPCHEM1\MSVOA_R\Data\VR121718\
 Data File : VR026263.D
 Acq On : 17 Dec 2018 13:13
 Operator : SY/MD
 Sample : BFB98
 Misc : 25mL/MSVOA_R/WATER
 ALS Vial : 1 Sample Multiplier: 1

Instrument :
 MSVOA_R
 ClientSampleId :
 BFB98

Integration File: rteint.p

Method : Z:\VOASRV\HPCHEM1\MSVOA_R\METHODS\SOMRTR121718WMA.M
 Title : TRACE VOA SOM01.0
 Last Update : Mon Dec 17 15:07:11 2018



AutoFind: Scans 1742, 1743, 1744; Background Corrected with Scan 1735

Target Mass	Rel. to Mass	Lower Limit%	Upper Limit%	Rel. Abn%	Raw Abn	Result Pass/Fail
50	95	15	40	22.8	55755	PASS
75	95	30	80	58.3	142802	PASS
95	95	100	100	100.0	244950	PASS
96	95	5	9	7.0	17247	PASS
173	174	0.00	2	0.2	380	PASS
174	95	50	120	72.7	178007	PASS
175	174	5	9	7.3	12991	PASS
176	174	95	101	96.2	171320	PASS
177	176	5	9	6.8	11701	PASS

m/z	Abundance
35.40	114.0
35.90	90.0
36.10	90.0
36.60	62.0
38.60	57.0
39.20	189.0
40.10	572.0
40.80	137.0
41.80	81.0
42.10	70.0
44.00	744.0
46.10	130.0
46.70	138.0
48.40	61.0
49.10	60.0
50.10	157.0
50.90	93.0
51.70	97.0
52.20	65.0
54.00	55.0
54.90	67.0
56.30	110.0
57.90	109.0
58.50	149.0
59.60	96.0
64.10	61.0
65.00	55.0
68.60	76.0
69.60	90.0
70.70	104.0
71.30	159.0
71.80	61.0
72.50	76.0
74.40	69.0
74.80	59.0
75.30	118.0
76.20	71.0
79.70	141.0
81.80	109.0
82.60	66.0
83.20	100.0
83.90	143.0
85.50	97.0
86.20	113.0
87.80	55.0
91.00	124.0
92.20	111.0
92.80	63.0
95.20	84.0
96.30	82.0
97.90	51.0
98.50	86.0
98.80	124.0
101.20	119.0
102.30	96.0
109.20	140.0
109.70	83.0
111.40	60.0
112.20	80.0
113.40	82.0
114.00	83.0
115.90	58.0
117.10	150.0
119.50	68.0
120.40	84.0
122.70	104.0
123.60	103.0
125.90	103.0
127.70	61.0
128.40	51.0
130.00	85.0
130.50	104.0
132.50	51.0
134.20	55.0
135.50	67.0
136.90	88.0
138.30	60.0
139.40	156.0
144.20	78.0
147.50	69.0
150.50	174.0
152.50	51.0
158.70	143.0
161.40	79.0
163.00	150.0
164.50	51.0
167.90	116.0
169.30	69.0
172.80	87.0
173.90	147.0
174.90	53.0
179.90	132.0

Instrument :
MSVOA_R
ClientSampleId :
BFB98

180.50	147.0
183.40	180.0
186.30	90.0
186.60	56.0
187.20	57.0
191.20	61.0
191.70	54.0
192.20	78.0
193.20	87.0
193.90	132.0
198.40	65.0
198.60	67.0
201.70	103.0
207.40	227.0
207.80	158.0
210.00	58.0
214.00	98.0
217.20	56.0
219.30	108.0
222.40	63.0
224.50	105.0
227.00	52.0
227.50	105.0
228.20	53.0
230.90	119.0
231.60	50.0
234.00	71.0
235.90	50.0
236.90	79.0
238.40	133.0
245.50	58.0
246.70	52.0
247.70	100.0
248.40	68.0
249.80	127.0
250.40	119.0
251.00	122.0
253.20	80.0
254.50	242.0
255.00	105.0
255.20	114.0
257.10	72.0
263.40	85.0
265.70	60.0
267.50	62.0
268.20	174.0
273.40	125.0
274.90	102.0
276.00	113.0
276.30	83.0
279.60	131.0
281.70	136.0
283.30	125.0
283.80	128.0
284.50	68.0
291.40	50.0
297.60	118.0
299.00	195.0

Instrument :
MSVOA_R
ClientSampleId :
BFB98

m/z	Abundance
36.10	1808.0
37.10	11372.0
38.10	11235.0
39.10	4323.0
40.10	827.0
40.90	173.0
42.30	138.0
43.20	245.0
44.00	2518.0
45.10	2211.0
46.00	270.0
47.10	2500.0
48.00	1508.0
49.10	8312.0
50.10	42392.0
51.10	12130.0
52.00	511.0
53.00	248.0
53.80	89.0
54.90	633.0
56.10	3458.0
57.00	7530.0
58.00	322.0
59.00	116.0
60.10	1516.0
61.00	11904.0
62.10	10448.0
63.10	10765.0
64.10	1459.0
65.10	1269.0
65.90	102.0
66.10	115.0
66.90	420.0
68.00	20736.0
69.10	20232.0
70.10	2088.0
71.10	149.0
72.10	1082.0
73.10	9418.0
74.10	34864.0
75.10	100312.0
76.10	8404.0
77.20	946.0
78.00	931.0
78.90	9721.0
80.00	2898.0
80.90	9591.0
82.00	2171.0
83.10	395.0
84.30	149.0
86.00	167.0
87.00	5278.0
88.00	5009.0
89.50	107.0
91.00	1112.0
92.10	5646.0
93.00	7801.0
94.10	20840.0
95.10	170176.0
96.00	11141.0
97.00	564.0
98.70	146.0
100.30	61.0
101.70	135.0
102.80	128.0
103.20	237.0
104.00	971.0
104.90	148.0
105.20	107.0
105.90	1036.0
107.00	445.0
108.00	149.0
109.00	131.0
110.20	170.0
110.40	181.0
111.10	415.0
112.00	101.0
112.70	154.0
113.10	245.0
113.90	60.0
114.80	376.0
115.90	824.0
116.90	1479.0
118.00	484.0
118.90	1371.0
122.00	59.0
122.50	80.0
123.10	119.0
124.00	96.0
124.90	206.0
125.40	82.0
126.10	137.0

Instrument :
MSVOA_R
ClientSampleId :
BFB98

126.90	95.0
127.20	102.0
128.00	635.0
128.70	239.0
129.10	445.0
130.00	448.0
130.90	300.0
131.80	89.0
133.30	80.0
134.00	134.0
134.70	199.0
135.40	76.0
136.10	79.0
136.90	262.0
137.60	78.0
139.60	211.0
140.20	50.0
140.90	1843.0
142.10	183.0
143.00	3167.0
144.00	201.0
145.00	1100.0
146.10	392.0
146.60	88.0
147.10	115.0
147.70	688.0
149.00	231.0
150.00	234.0
151.80	70.0
153.40	101.0
153.80	110.0
154.10	83.0
154.90	246.0
155.70	98.0
156.10	86.0
156.80	319.0
157.60	120.0
158.00	96.0
159.00	286.0
159.30	131.0
159.60	136.0
159.90	115.0
160.80	68.0
162.30	71.0
162.90	53.0
164.20	77.0
164.80	122.0
165.20	70.0
167.40	152.0
168.40	201.0
169.20	182.0
171.20	171.0
172.00	1638.0
173.00	1402.0
174.00	100096.0
175.00	7746.0
176.00	97896.0
177.00	6712.0
178.10	177.0
178.80	100.0
180.80	61.0
181.40	61.0
183.20	65.0
184.70	53.0
185.20	249.0
186.10	85.0
187.60	50.0
188.30	198.0
189.30	91.0
190.10	74.0
190.30	69.0
193.00	114.0
193.70	174.0
196.80	55.0
200.20	114.0
202.00	75.0
205.20	50.0
206.40	84.0
208.00	123.0
208.90	99.0
210.00	202.0
210.80	58.0
211.40	67.0
211.80	59.0
215.30	145.0
216.90	66.0
219.10	149.0
220.30	56.0
221.90	54.0
223.10	53.0
227.80	56.0
235.20	65.0
236.90	59.0
237.90	50.0
242.00	65.0
242.70	78.0

Instrument :
MSVOA_R
ClientSampleId :
BFB98

245.90	53.0
248.00	110.0
248.90	76.0
251.30	66.0
253.00	77.0
255.70	53.0
261.70	53.0
263.00	55.0
272.10	123.0
274.50	97.0
275.80	74.0
276.00	80.0
276.30	137.0
279.70	91.0
281.00	267.0
281.70	106.0
282.10	191.0
283.20	60.0
287.10	57.0
288.70	53.0
291.60	60.0
293.40	51.0
294.40	51.0
296.10	116.0
296.80	107.0
298.10	53.0
298.90	86.0

Instrument :
MSVOA_R
ClientSampleId :
BFB98

m/z	Abundance
36.00	2894.0
37.10	18768.0
38.10	14640.0
39.10	5943.0
40.10	1181.0
40.70	138.0
42.50	166.0
43.20	411.0
44.10	3457.0
45.10	3243.0
46.00	322.0
47.10	4256.0
48.10	1934.0
49.10	14314.0
50.10	63408.0
51.10	20416.0
52.10	890.0
52.90	219.0
54.20	189.0
55.10	1301.0
56.00	5800.0
57.10	9826.0
58.10	391.0
58.80	88.0
60.10	3218.0
61.00	16480.0
62.10	15090.0
63.10	13905.0
64.10	1782.0
65.00	1514.0
66.10	369.0
68.10	33216.0
69.00	34640.0
70.10	2832.0
71.00	284.0
72.00	1971.0
73.00	15359.0
74.10	60664.0
75.10	165696.0
76.00	14560.0
77.00	2283.0
77.70	875.0
79.00	13952.0
80.00	3604.0
80.90	15391.0
81.90	2793.0
83.00	630.0
84.40	185.0
85.00	106.0
86.10	449.0
87.00	11238.0
88.00	9585.0
89.40	51.0
90.00	63.0
90.90	1643.0
92.00	8719.0
93.00	14466.0
94.10	37416.0
95.10	285632.0
96.10	20000.0
96.90	701.0
97.70	63.0
98.80	56.0
99.60	77.0
102.80	311.0
103.90	1636.0
105.00	660.0
105.90	2181.0
106.80	225.0
107.90	195.0
110.00	317.0
110.90	450.0
111.70	446.0
112.00	376.0
112.70	278.0
113.80	57.0
115.00	229.0
116.00	1241.0
116.90	2122.0
117.90	1421.0
118.90	2423.0
119.80	227.0
121.20	113.0
123.10	224.0
124.10	260.0
124.80	206.0
125.80	200.0
126.50	103.0
127.90	1116.0
129.00	663.0
129.80	1014.0
130.80	211.0

Instrument :
MSVOA_R
ClientSampleId :
BFB98

131.90	221.0
133.00	253.0
133.70	201.0
134.10	218.0
134.90	798.0
136.00	153.0
137.00	752.0
139.00	203.0
140.10	143.0
141.00	4626.0
141.80	470.0
143.00	4472.0
143.80	95.0
144.10	112.0
144.30	104.0
145.00	977.0
146.00	697.0
147.00	159.0
148.00	695.0
148.90	91.0
150.00	474.0
151.10	156.0
152.00	217.0
153.10	245.0
153.90	217.0
155.00	467.0
155.80	268.0
156.90	462.0
158.00	225.0
158.90	600.0
160.00	50.0
160.90	720.0
162.10	126.0
162.70	131.0
164.30	125.0
164.60	81.0
164.90	109.0
167.10	51.0
167.50	77.0
167.70	79.0
168.00	50.0
168.60	96.0
169.20	78.0
169.50	71.0
169.90	73.0
170.80	386.0
172.00	2278.0
174.00	200384.0
175.00	14268.0
176.00	196224.0
177.00	14048.0
178.00	482.0
179.00	118.0
180.10	109.0
181.30	184.0
183.80	224.0
189.80	80.0
190.50	54.0
191.30	228.0
193.00	830.0
195.30	85.0
196.20	50.0
197.30	151.0
199.90	57.0
200.10	56.0
201.30	85.0
202.90	86.0
204.30	133.0
207.20	186.0
208.20	74.0
210.70	55.0
212.60	127.0
213.20	129.0
213.70	55.0
214.00	78.0
214.20	66.0
215.90	52.0
218.00	127.0
219.10	59.0
221.10	60.0
222.80	85.0
223.30	50.0
224.70	71.0
227.00	115.0
228.00	63.0
229.20	57.0
231.90	86.0
232.50	102.0
235.50	151.0
237.30	56.0
238.90	53.0
239.70	119.0
240.60	229.0
241.90	61.0
245.30	63.0
245.80	184.0

Instrument :
MSVOA_R
ClientSampleId :
BFB98

249.30	256.0
249.90	169.0
251.70	90.0
252.50	60.0
253.20	165.0
254.80	82.0
257.30	67.0
259.70	149.0
260.20	81.0
265.00	195.0
267.20	50.0
268.10	115.0
268.60	50.0
272.50	115.0
273.20	60.0
274.20	75.0
275.50	160.0
279.40	91.0
279.90	174.0
281.10	977.0
281.90	118.0
282.20	176.0
283.20	413.0
284.80	94.0
289.40	117.0
290.40	141.0
292.20	67.0
297.70	54.0
298.90	59.0

Instrument :
MSVOA_R
ClientSampleId :
BFB98

m/z	Abundance
36.10	2744.0
37.10	15167.0
38.10	14175.0
39.00	5490.0
40.20	1156.0
40.80	104.0
41.70	65.0
42.40	173.0
43.00	415.0
44.10	3246.0
45.00	2957.0
47.00	2938.0
47.90	1813.0
49.10	12458.0
50.10	61936.0
51.10	17968.0
51.90	961.0
54.00	211.0
55.00	1032.0
56.10	4980.0
57.00	9285.0
58.00	627.0
59.00	354.0
60.00	3051.0
61.00	17264.0
62.00	16920.0
63.10	12868.0
64.00	971.0
65.20	700.0
66.10	201.0
67.10	1263.0
68.10	31768.0
69.00	34888.0
70.00	2315.0
70.90	336.0
72.10	1871.0
73.10	16608.0
74.00	56216.0
75.10	162752.0
76.10	13321.0
77.00	1669.0
78.10	1156.0
79.00	12629.0
79.90	3717.0
80.90	13234.0
82.00	2830.0
83.00	515.0
83.70	83.0
84.40	51.0
85.20	198.0
85.90	266.0
86.10	268.0
87.00	10722.0
88.00	10740.0
89.30	131.0
90.90	1195.0
92.00	10599.0
93.00	15452.0
94.00	40328.0
95.10	279296.0
96.10	20600.0
97.10	402.0
100.50	140.0
102.20	109.0
102.90	271.0
104.00	2002.0
104.90	359.0
105.90	2182.0
107.10	331.0
108.00	106.0
108.70	86.0
109.90	518.0
111.00	575.0
112.00	377.0
112.80	249.0
115.00	623.0
116.00	2059.0
116.90	2571.0
117.90	2262.0
118.90	2043.0
119.60	111.0
120.00	123.0
121.10	75.0
121.50	97.0
122.50	110.0
123.80	162.0
125.00	436.0
125.60	155.0
126.10	366.0
126.70	111.0
127.00	90.0
128.00	1502.0

Instrument :
MSVOA_R
ClientSampleId :
BFB98

129.10	386.0
130.00	1255.0
130.90	377.0
132.20	169.0
132.90	483.0
133.80	409.0
134.90	1178.0
135.80	108.0
137.00	641.0
137.90	110.0
138.90	108.0
139.70	313.0
141.00	4042.0
141.80	561.0
143.00	4161.0
144.00	246.0
144.90	369.0
145.90	476.0
147.00	427.0
147.90	651.0
148.90	272.0
150.00	360.0
151.90	288.0
152.20	217.0
153.00	138.0
153.80	155.0
154.90	542.0
156.10	228.0
157.10	563.0
157.90	227.0
159.00	404.0
160.70	385.0
160.90	423.0
161.50	53.0
162.00	51.0
162.20	59.0
162.50	54.0
162.90	160.0
164.00	93.0
165.10	106.0
166.10	205.0
167.20	71.0
168.40	330.0
169.10	148.0
170.40	342.0
170.70	383.0
171.00	333.0
172.10	1389.0
174.00	233984.0
175.00	17120.0
176.00	219840.0
177.00	14343.0
177.90	1143.0
179.10	136.0
180.20	67.0
181.00	118.0
181.70	55.0
184.40	85.0
188.90	70.0
191.10	519.0
191.70	146.0
192.00	189.0
193.00	1421.0
194.10	132.0
194.70	107.0
195.80	64.0
196.60	65.0
197.20	76.0
203.50	84.0
204.10	50.0
204.70	87.0
205.20	349.0
206.10	130.0
207.00	601.0
207.80	63.0
208.20	117.0
208.90	194.0
210.00	56.0
211.00	143.0
215.50	79.0
216.60	55.0
216.80	62.0
218.90	92.0
219.50	52.0
220.30	51.0
220.80	51.0
222.10	76.0
223.40	127.0
224.10	130.0
225.90	52.0
226.60	59.0
228.80	75.0
229.90	79.0
234.80	111.0
235.80	126.0
236.10	55.0

Instrument :
MSVOA_R
ClientSampleId :
BFB98

236.70	79.0
237.70	67.0
243.90	201.0
245.50	68.0
245.80	63.0
248.30	50.0
249.10	336.0
249.90	57.0
250.90	152.0
251.90	106.0
253.60	54.0
253.90	64.0
254.80	231.0
260.30	54.0
262.60	79.0
264.90	667.0
265.80	314.0
266.80	204.0
268.90	60.0
269.40	62.0
273.70	80.0
274.00	73.0
277.50	94.0
280.00	77.0
281.10	5006.0
282.00	1198.0
283.10	665.0
284.10	343.0
285.10	149.0
285.70	51.0
288.70	54.0
289.30	56.0
290.10	65.0
291.30	68.0
292.30	67.0
294.00	57.0
295.50	93.0

Instrument :
MSVOA_R
ClientSampleId :
BFB98