

Data Path : Z:\VOASRV\HPCHEM1\MSVOA R\DATA\VR092818\
 Data File : VR025901.D
 Acq On : 28 Sep 2018 15:16
 Operator : SY/MD
 Sample : J5156-02MS
 Misc : 25mL/MSVOA R/WATER
 ALS Vial : 8 Sample Multiplier: 1

Instrument :
 MSVOA_R
 ClientSampled :

Quant Time: Sep 29 05:15:57 2018
 Quant Method : Z:\VOASRV\HPCHEM1\MSVOA_R\METHODS\SOMRTR092718WMA.M
 Quant Title : TRACE VOA SOM01.0
 QLast Update : Sat Sep 29 05:14:56 2018
 Response via : Initial Calibration

Internal Standards	R.T.	QIon	Response	Conc	Units	Dev(Min)
1) 1,4-Difluorobenzene	8.46	114	497264	5.00	ug/L	0.00
28) Chlorobenzene-d5	11.29	117	413498	5.00	ug/L	0.00
60) 1,4-Dichlorobenzene-d4	13.22	152	139934	5.00	ug/L	0.00

System Monitoring Compounds

4) Vinyl Chloride-d3	2.15	65	193092	4.92	ug/L	0.00
Spiked Amount	5.000	Range	40 - 130	Recovery	=	98.40%
7) Chloroethane-d5	2.63	69	171637	5.36	ug/L	0.00
Spiked Amount	5.000	Range	65 - 130	Recovery	=	107.20%
11) 1,1-Dichloroethene-d2	3.63	63	484504	5.26	ug/L	0.01
Spiked Amount	5.000	Range	60 - 125	Recovery	=	105.20%
20) 2-Butanone-d5	6.59	46	231450	52.94	ug/L	0.00
Spiked Amount	50.000	Range	40 - 130	Recovery	=	105.88%
24) Chloroform-d	7.20	84	328116	4.81	ug/L	0.00
Spiked Amount	5.000	Range	70 - 125	Recovery	=	96.20%
26) 1,2-Dichloroethane-d4	7.89	65	145900	4.97	ug/L	0.00
Spiked Amount	5.000	Range	70 - 130	Recovery	=	99.40%
32) Benzene-d6	7.85	84	681940	4.96	ug/L	0.00
Spiked Amount	5.000	Range	70 - 125	Recovery	=	99.20%
36) 1,2-Dichloropropane-d6	8.90	67	184731	4.98	ug/L	0.00
Spiked Amount	5.000	Range	60 - 140	Recovery	=	99.60%
41) Toluene-d8	9.97	98	628329	4.86	ug/L	0.00
Spiked Amount	5.000	Range	70 - 130	Recovery	=	97.20%
43) trans-1,3-Dichloropropene-	10.24	79	36654	4.36	ug/L	0.00
Spiked Amount	5.000	Range	55 - 130	Recovery	=	87.20%
46) 2-Hexanone-d5	10.59	63	174233	54.27	ug/L	0.00
Spiked Amount	50.000	Range	45 - 130	Recovery	=	108.54%
57) 1,1,2,2-Tetrachloroethane-	12.36	84	70978	4.72	ug/L	0.00
Spiked Amount	5.000	Range	65 - 120	Recovery	=	94.40%
64) 1,2-Dichlorobenzene-d4	13.51	152	111909	4.99	ug/L	0.00
Spiked Amount	5.000	Range	80 - 120	Recovery	=	99.80%

Target Compounds

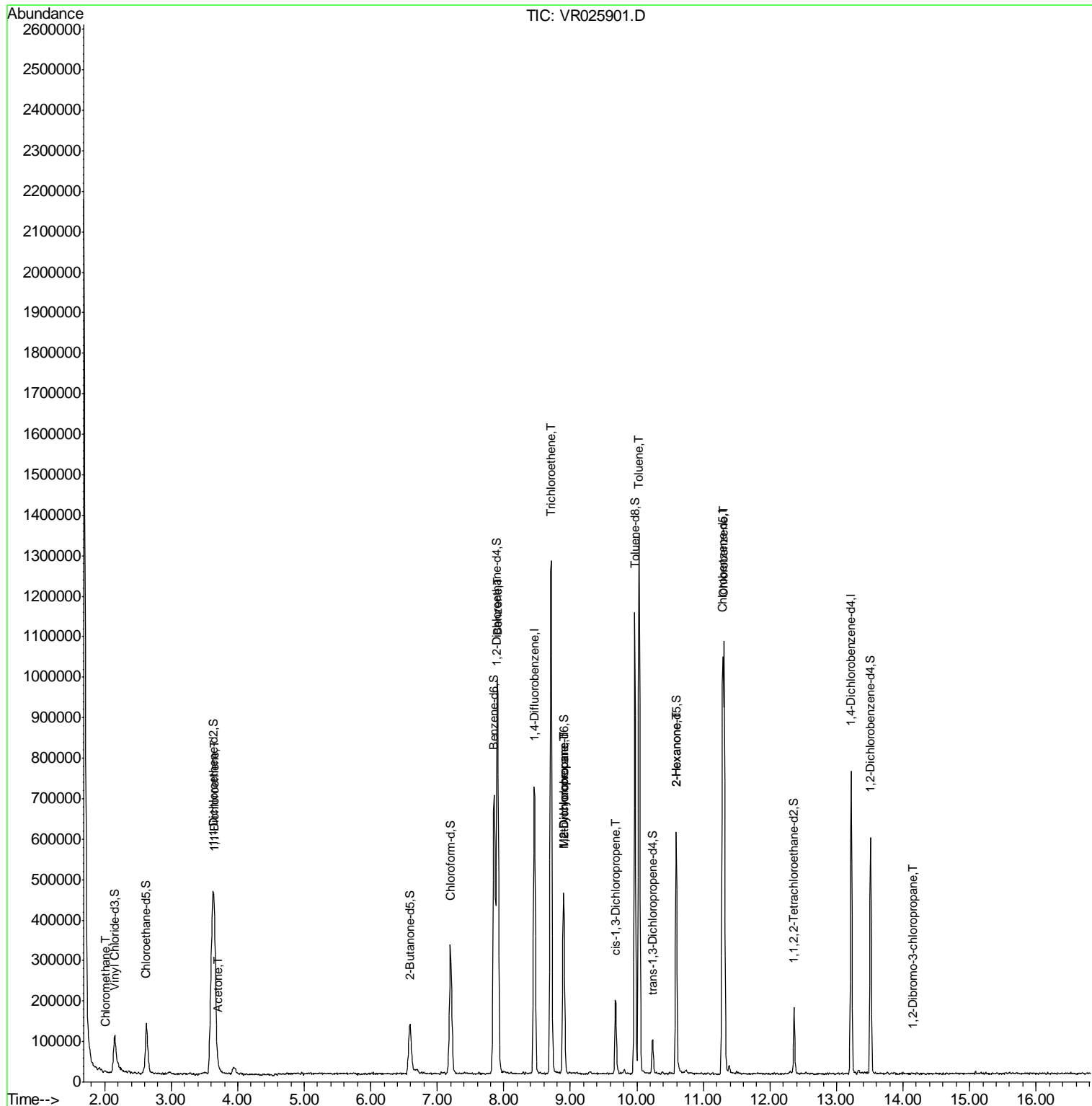
Target Compounds	R.T.	QIon	Response	Conc	Units	Ovalue
3) Chloromethane	2.01	50	4007	0.093	ug/L	83
12) 1,1-Dichloroethene	3.65	96	211968	5.647	ug/L	90
13) Acetone	3.70	43	18372	5.798	ug/L	99
33) Benzene	7.91	78	785319	5.662	ug/L	100
34) Trichloroethene	8.71	95	424169	11.607	ug/L	93
35) Methylcyclohexane	8.90	83	43602	0.794	ug/L #	16
37) 1,2-Dichloropropane	8.90	63	24562	0.826	ug/L #	92
39) cis-1,3-Dichloropropene	9.69	75	5275	0.158	ug/L #	46
42) Toluene	10.04	91	835914	5.800	ug/L	96
48) 2-Hexanone	10.59	43	24806	3.621	ug/L #	72
51) Chlorobenzene	11.32	112	425029	5.560	ug/L	96
66) 1,2-Dibromo-3-chloropropan	14.14	75	219	0.159	ug/L #	72

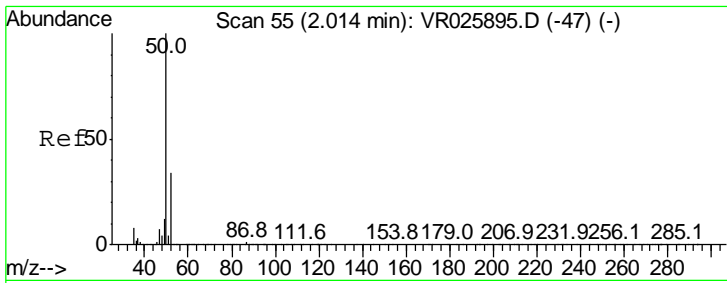
(#) = qualifier out of range (m) = manual integration (+) = signals summed

Data Path : Z:\VOASRV\HPCHEM1\MSVOA R\DATA\VR092818\
 Data File : VR025901.D
 Acq On : 28 Sep 2018 15:16
 Operator : SY/MD
 Sample : J5156-02MS
 Misc : 25mL/MSVOA R/WATER
 ALS Vial : 8 Sample Multiplier: 1

Instrument :
 MSVOA_R
 ClientSampleId :

Quant Time: Sep 29 05:15:57 2018
 Quant Method : Z:\VOASRV\HPCHEM1\MSVOA_R\METHODS\SOMRTR092718WMA.M
 Quant Title : TRACE VOA SOM01.0
 QLast Update : Sat Sep 29 05:14:56 2018
 Response via : Initial Calibration

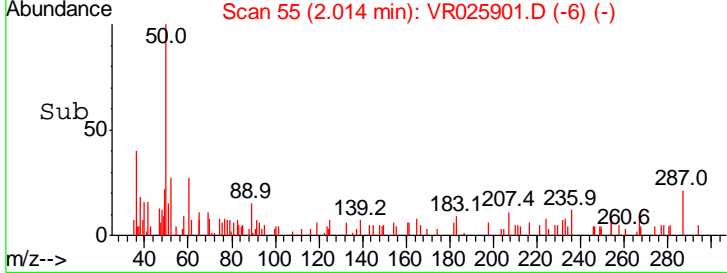
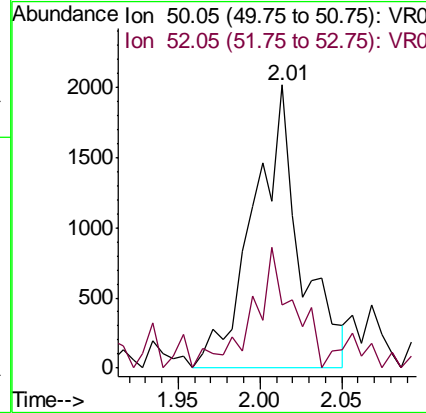
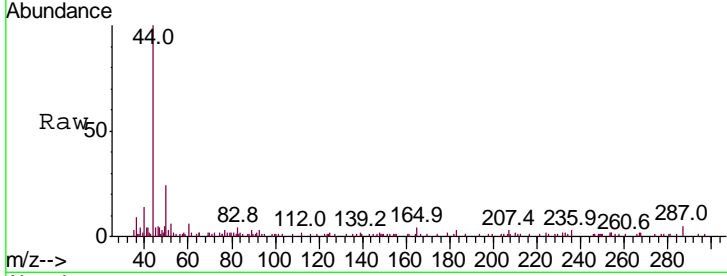




#3
 Chloromethane
 Concen: 0.093 ug/L
 RT: 2.01 min Scan# 55
 Delta R.T. 0.00 min
 Lab File: VR025901.D
 Acq: 28 Sep 2018 15:16

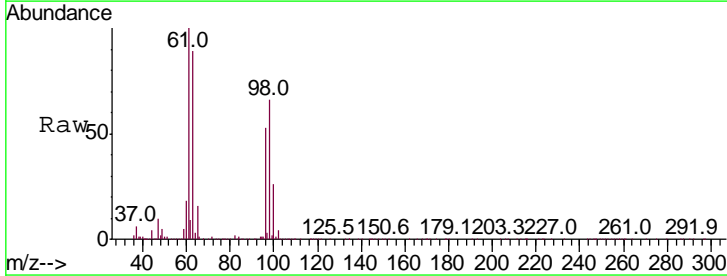
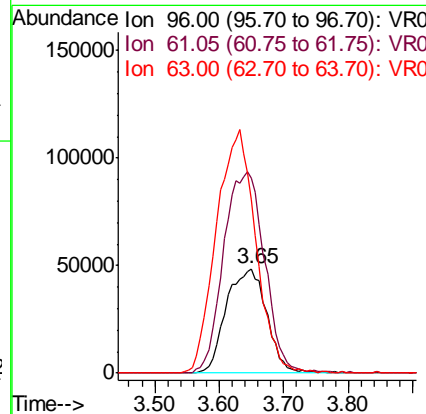
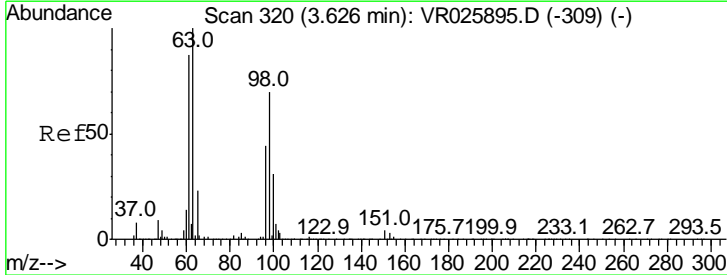
Instrument :
 MSVOA_R
 ClientSampled :

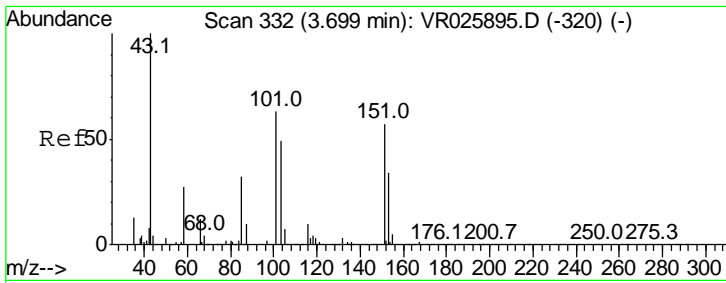
Tgt Ion	Resp	Lower	Upper
50	100		
52	22.2	22.1	41.1



#12
 1,1-Dichloroethene
 Concen: 5.647 ug/L
 RT: 3.65 min Scan# 324
 Delta R.T. 0.02 min
 Lab File: VR025901.D
 Acq: 28 Sep 2018 15:16

Tgt Ion	Resp	Lower	Upper
96	100		
61	187.7	145.0	269.4
63	166.2	123.8	230.0

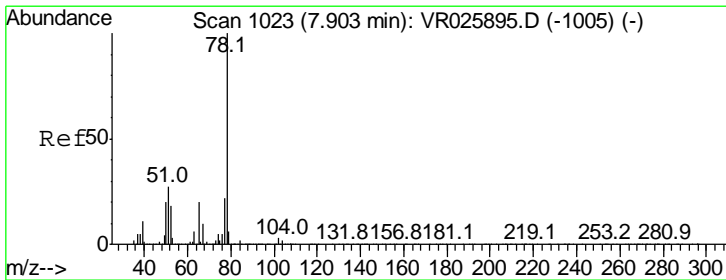
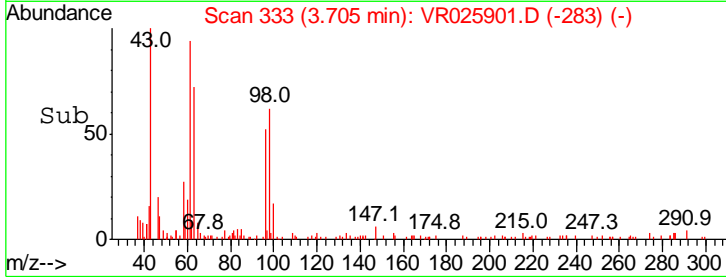
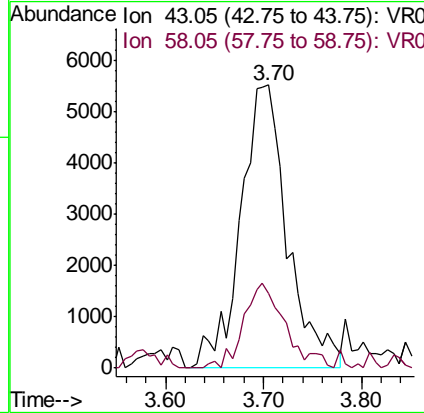
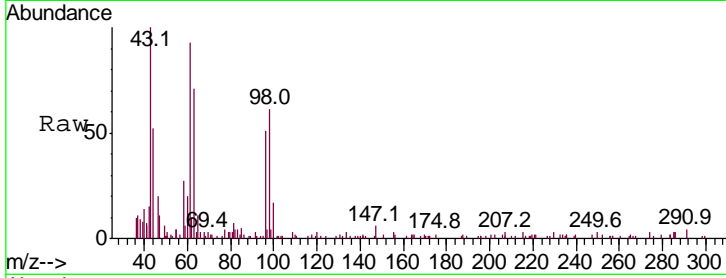




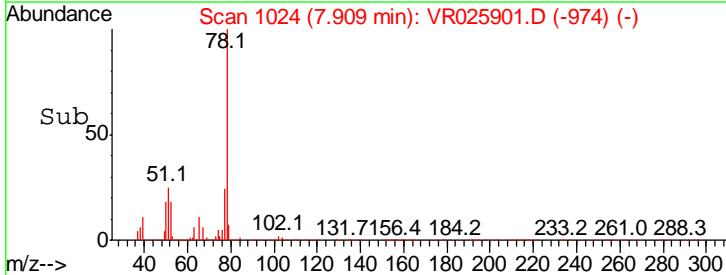
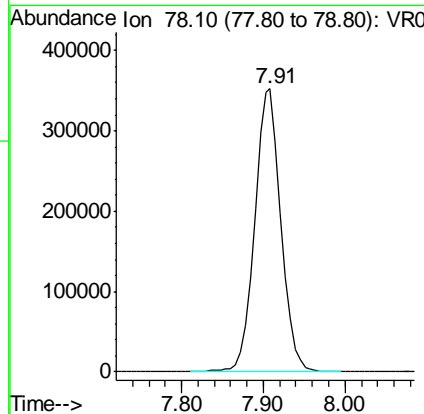
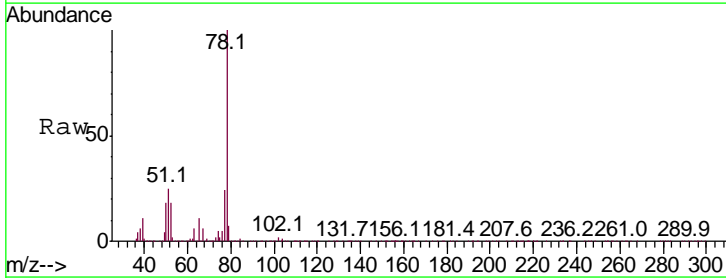
#13
 Acetone
 Concen: 5.798 ug/L
 RT: 3.70 min Scan# 333
 Delta R.T. 0.01 min
 Lab File: VR025901.D
 Acq: 28 Sep 2018 15:16

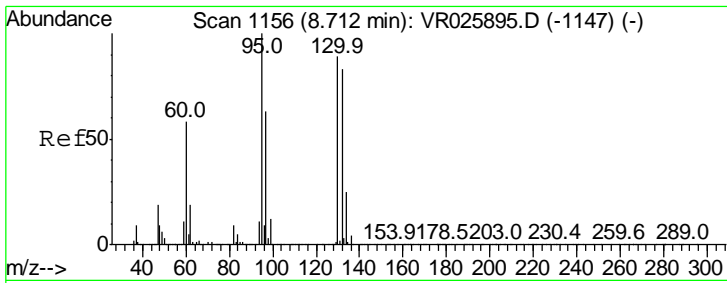
Instrument : MSVOA_R
 ClientSampled :

Tgt Ion: 43 Resp: 18372
 Ion Ratio Lower Upper
 43 100
 58 26.4 0.0 51.4



#33
 Benzene
 Concen: 5.662 ug/L
 RT: 7.91 min Scan# 1024
 Delta R.T. 0.01 min
 Lab File: VR025901.D
 Acq: 28 Sep 2018 15:16
 Tgt Ion: 78 Resp: 785319

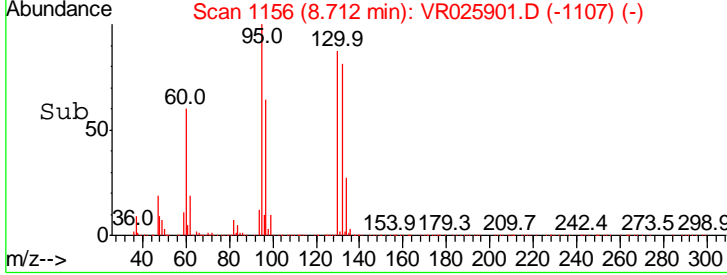
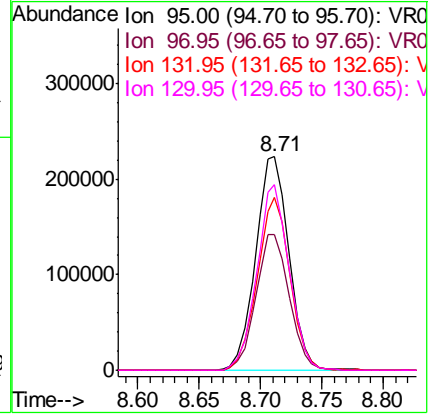
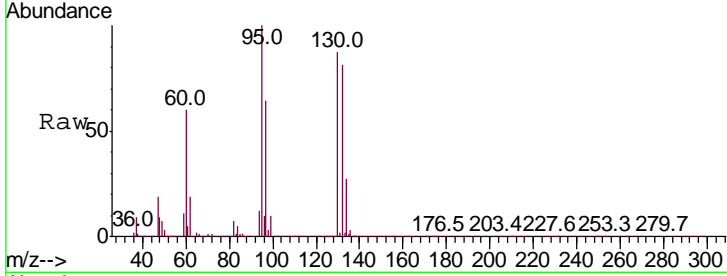




#34
 Trichloroethene
 Concen: 11.607 ug/L
 RT: 8.71 min Scan# 1156
 Delta R.T. 0.00 min
 Lab File: VR025901.D
 Acq: 28 Sep 2018 15:16

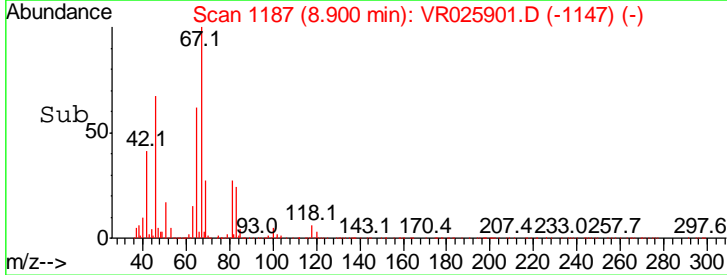
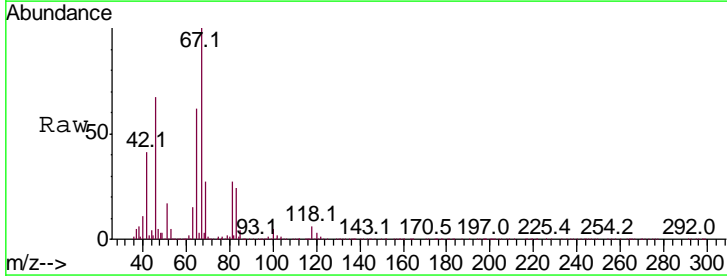
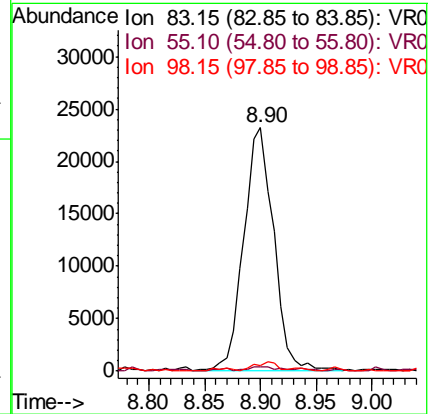
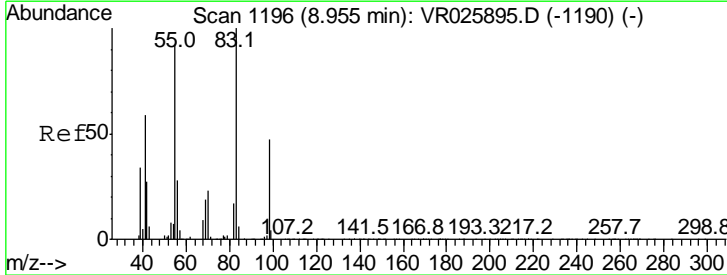
Instrument :
 MSVOA_R
 ClientSampled :

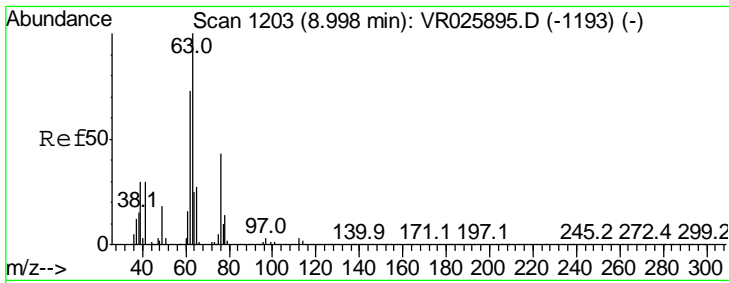
Tgt Ion	Resp	Lower	Upper
95	424169		
97	63.7	43.9	81.5
132	80.9	53.3	98.9
130	87.1	53.8	99.8



#35
 Methylcyclohexane
 Concen: 0.794 ug/L
 RT: 8.90 min Scan# 1187
 Delta R.T. -0.05 min
 Lab File: VR025901.D
 Acq: 28 Sep 2018 15:16

Tgt Ion	Resp	Lower	Upper
83	43602		
55	1.3	71.8	107.6#
98	2.9	34.2	51.4#

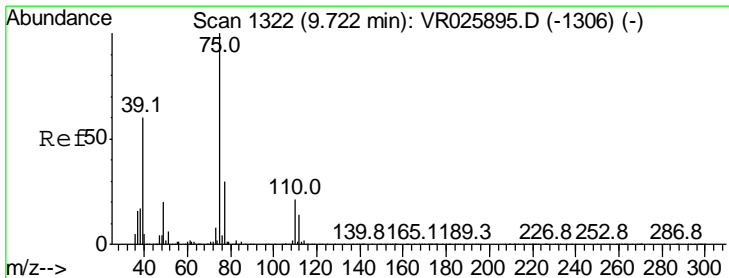
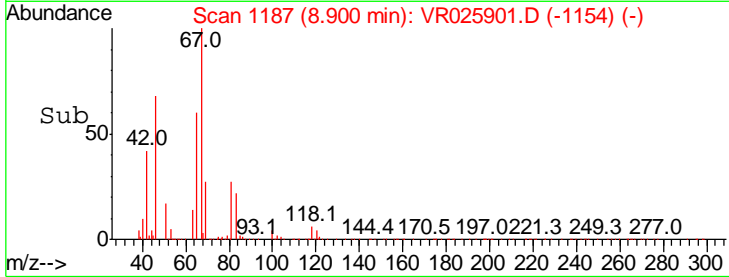
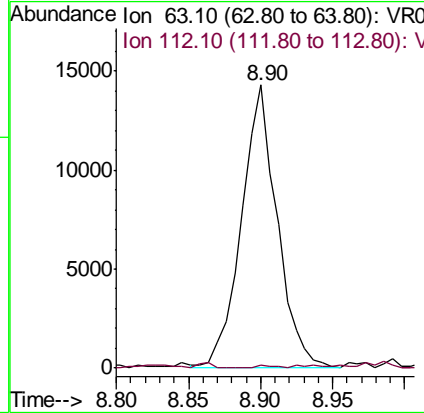
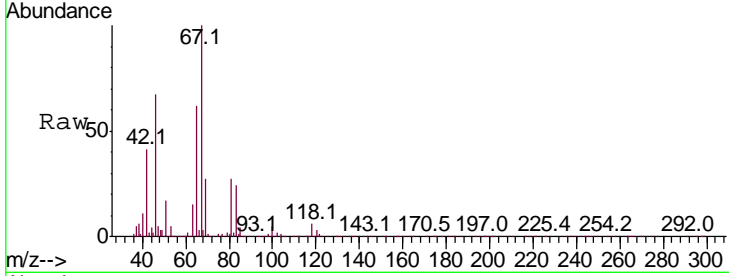




#37
 1,2-Dichloropropane
 Concen: 0.826 ug/L
 RT: 8.90 min Scan# 1187
 Delta R.T. -0.10 min
 Lab File: VR025901.D
 Acq: 28 Sep 2018 15:16

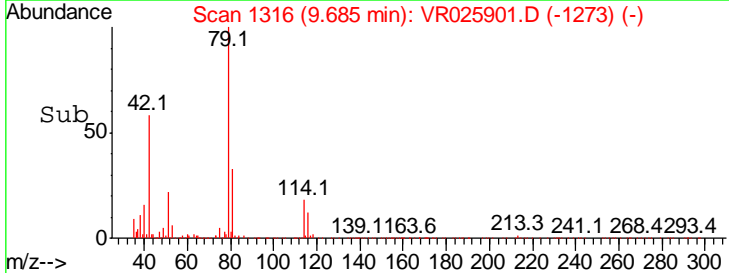
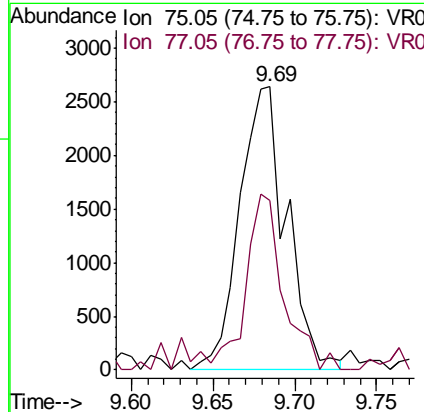
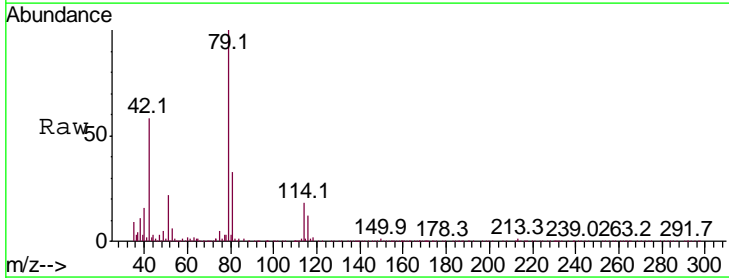
Instrument :
 MSVOA_R
 ClientSampled :

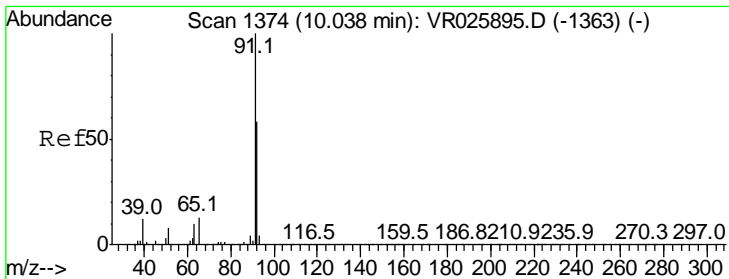
Tgt Ion	Ratio	Lower	Upper
63	100		
112	0.5	2.5	3.7#



#39
 cis-1,3-Dichloropropene
 Concen: 0.158 ug/L
 RT: 9.69 min Scan# 1316
 Delta R.T. -0.04 min
 Lab File: VR025901.D
 Acq: 28 Sep 2018 15:16

Tgt Ion	Ratio	Lower	Upper
75	100		
77	60.0	21.5	39.9#

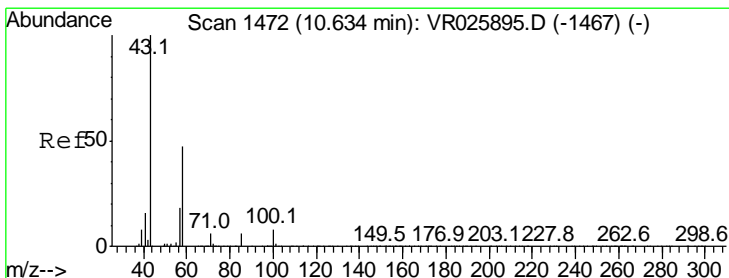
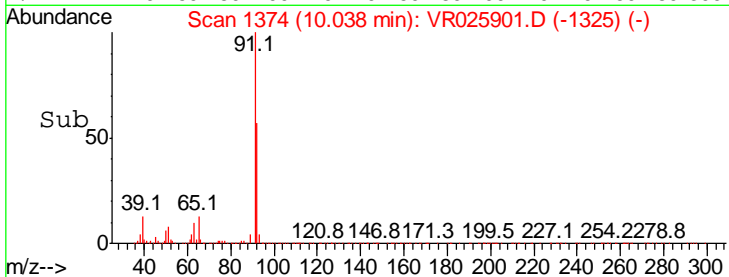
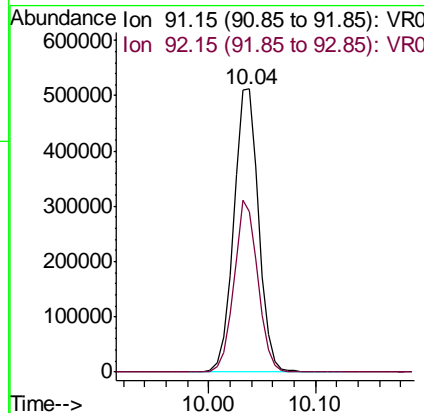
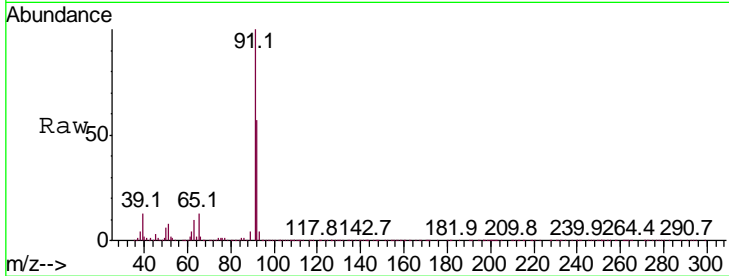




#42
 Toluene
 Concen: 5.800 ug/L
 RT: 10.04 min Scan# 1374
 Delta R.T. 0.00 min
 Lab File: VR025901.D
 Acq: 28 Sep 2018 15:16

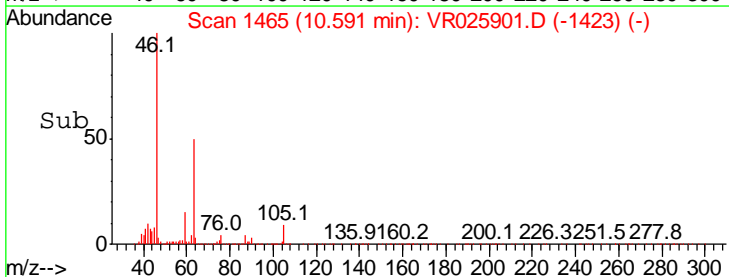
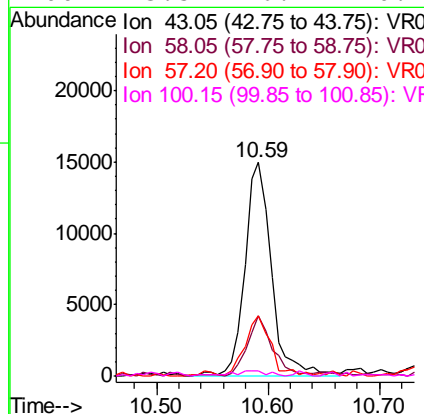
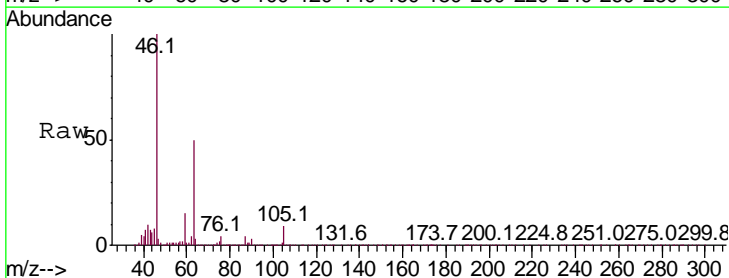
Instrument :
 MSVOA_R
 ClientSampled :

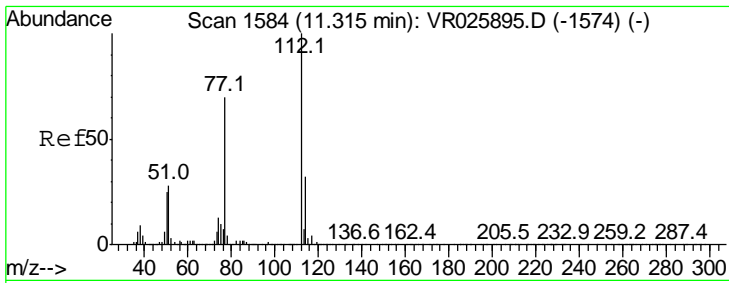
Tgt Ion	Resp	Lower	Upper
91	100		
92	56.9	41.8	77.6



#48
 2-Hexanone
 Concen: 3.621 ug/L
 RT: 10.59 min Scan# 1465
 Delta R.T. -0.04 min
 Lab File: VR025901.D
 Acq: 28 Sep 2018 15:16

Tgt Ion	Resp	Lower	Upper
43	100		
58	26.6	39.5	59.3#
57	27.1	14.6	21.8#
100	3.5	6.7	10.1#

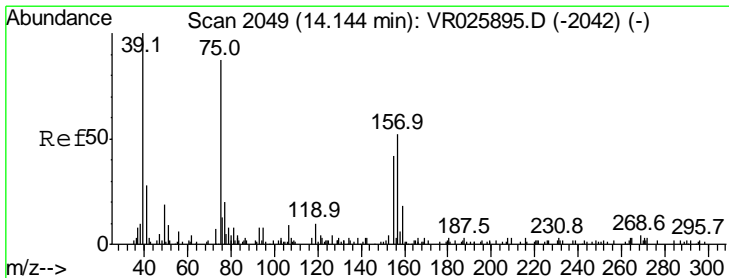
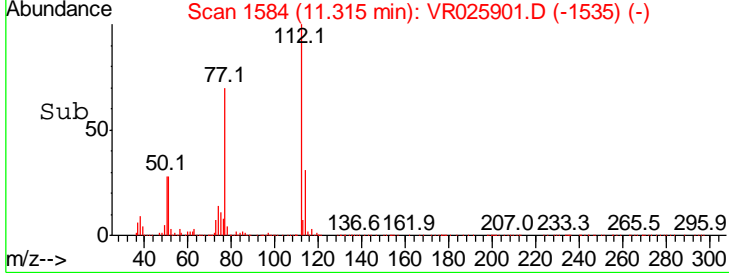
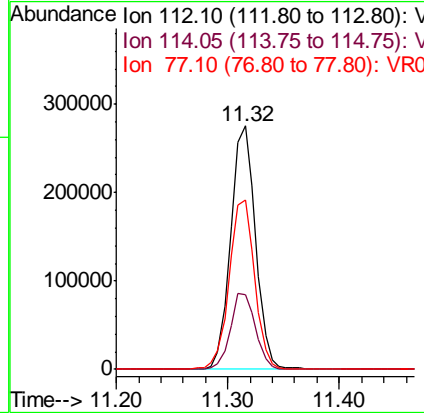
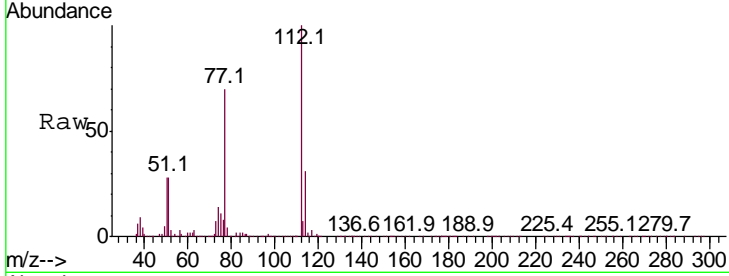




#51
 Chlorobenzene
 Concen: 5.560 ug/L
 RT: 11.32 min Scan# 1584
 Delta R.T. 0.00 min
 Lab File: VR025901.D
 Acq: 28 Sep 2018 15:16

Instrument : MSVOA_R
 ClientSampled :

Tgt Ion	Resp	Lower	Upper
112	100		
114	30.9	22.7	42.3
77	69.7	58.5	87.7



#66
 1,2-Dibromo-3-chloropropane
 Concen: 0.159 ug/L
 RT: 14.14 min Scan# 2048
 Delta R.T. -0.01 min
 Lab File: VR025901.D
 Acq: 28 Sep 2018 15:16

Tgt Ion	Resp	Lower	Upper
75	100		
155	44.4	37.8	56.6
157	98.3	49.7	74.5#

