

Data Path : Z:\VOASRV\HPCHEM1\MSVOA R\DATA\VR092818\
 Data File : VR025896.D
 Acq On : 28 Sep 2018 12:24
 Operator : SY/MD
 Sample : VR0928WBL01
 Misc : 25mL/MSVOA R/WATER
 ALS Vial : 3 Sample Multiplier: 1

Instrument :
 MSVOA_R
 ClientSampleId :
 VBLK06

Integration Parameters: rteint.p
 Integrator: RTE
 Smoothing : ON Filtering: 5
 Sampling : 1 Min Area: 3 % of largest Peak
 Start Thrs: 0.2 Max Peaks: 100
 Stop Thrs : 0 Peak Location: TOP

If leading or trailing edge < 100 prefer < Baseline drop else tangent >
 Peak separation: 5

Method : Z:\VOASRV\HPCHEM1\MSVOA_R\METHODS\SOMRTR092718WMA.M
 Title : TRACE VOA SOM01.0

Signal : TIC

peak #	R.T. min	first scan	max scan	last scan	PK TY	peak height	corr. area	corr. % max.	% of total
1	2.147	68	77	96	rBV	82581	287578	15.40%	2.194%
2	2.628	141	156	167	rBV	121909	333456	17.86%	2.544%
3	3.607	304	317	318	rBV2	206457	437405	23.43%	3.337%
4	6.595	796	808	819	rBV	110718	342305	18.34%	2.611%
5	7.203	897	908	918	rBV	313430	805090	43.13%	6.141%
6	7.854	1006	1015	1031	rBV3	686289	1866809	100.00%	14.240%
7	8.456	1105	1114	1125	rBV	778968	1486780	79.64%	11.342%
8	8.900	1179	1187	1199	rBV	420870	828094	44.36%	6.317%
9	9.679	1306	1315	1322	rBV	172516	300097	16.08%	2.289%
10	9.971	1354	1363	1370	rBV	1054888	1700413	91.09%	12.971%
11	10.239	1400	1407	1413	rBV	78413	128228	6.87%	0.978%
12	10.591	1459	1465	1473	rBV	502134	816630	43.74%	6.229%
13	11.285	1573	1579	1589	rBV	1057270	1586326	84.98%	12.101%
14	12.362	1751	1756	1762	rBV	162879	220749	11.82%	1.684%
15	13.220	1891	1897	1906	rBV	802215	1155156	61.88%	8.812%
16	13.512	1940	1945	1955	rBV	567987	814068	43.61%	6.210%

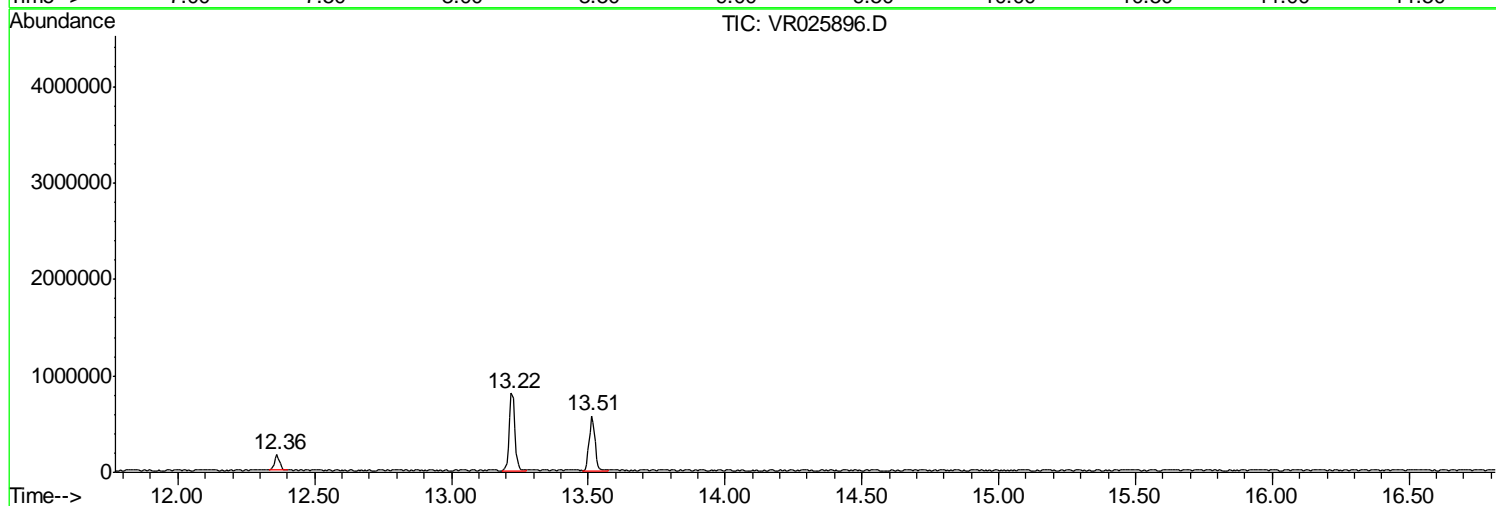
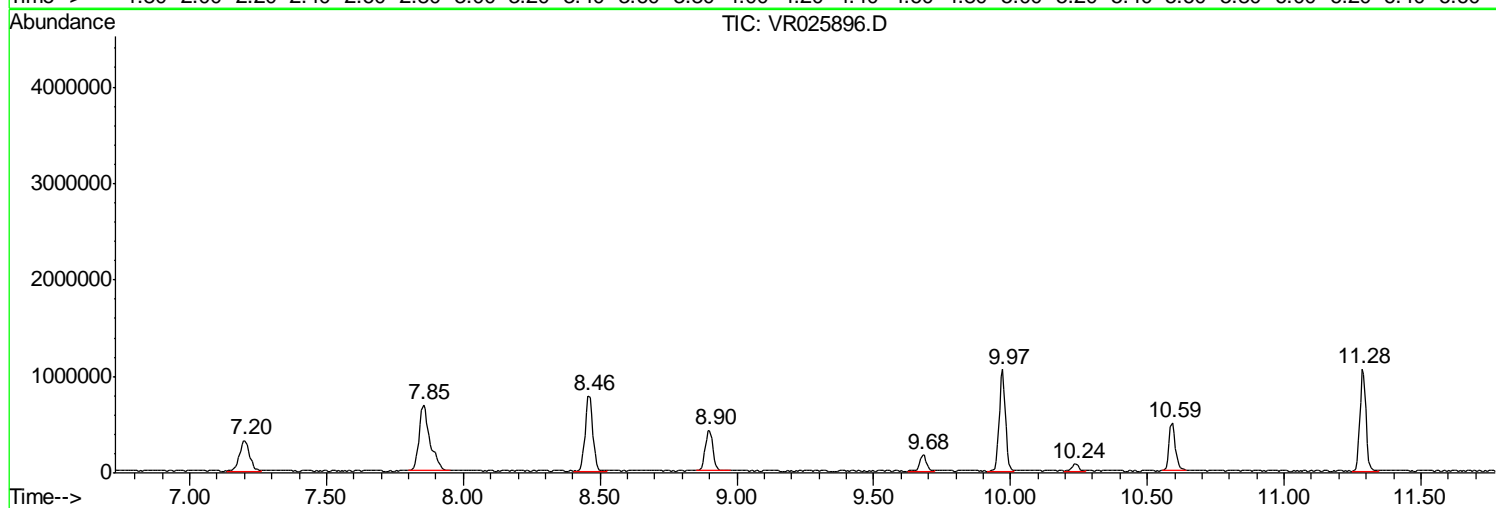
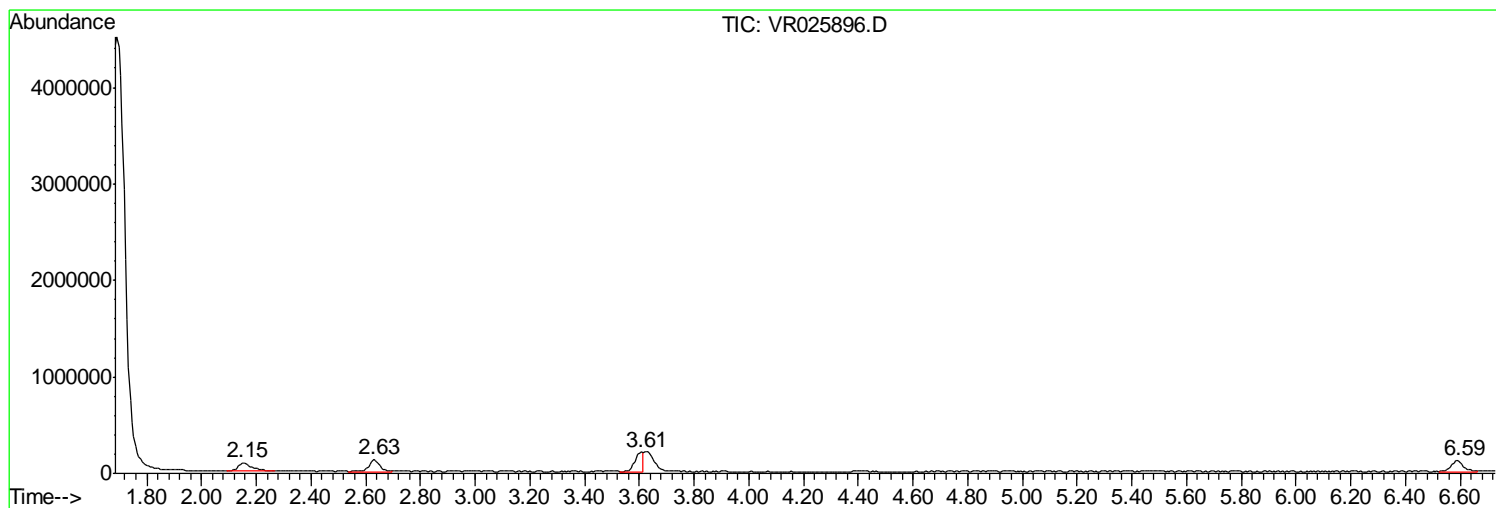
Sum of corrected areas: 13109184

Data Path : Z:\VOASRV\HPCHEM1\MSVOA R\DATA\VR092818\
Data File : VR025896.D
Acq On : 28 Sep 2018 12:24
Operator : SY/MD
Sample : VR0928WBL01
Misc : 25mL/MSVOA R/WATER
ALS Vial : 3 Sample Multiplier: 1

Instrument :
MSVOA_R
ClientSampled :
VBLK06

Quant Method : Z:\VOASRV\HPCHEM1\MSVOA_R\METHODS\SOMRTR092718WMA.M
Quant Title : TRACE VOA SOM01.0

TIC Library : C:\DATABASE\NIST11.L
TIC Integration Parameters: LSCINT.P



Data Path : Z:\VOASRV\HPCHEM1\MSVOA_R\DATA\VR092818\
Data File : VR025896.D
Acq On : 28 Sep 2018 12:24
Operator : SY/MD
Sample : VR0928WBL01
Misc : 25mL/MSVOA_R/WATER
ALS Vial : 3 Sample Multiplier: 1

Instrument :
MSVOA_R
ClientSampleId :
VBLK06

Quant Method : Z:\VOASRV\HPCHEM1\MSVOA_R\METHODS\SOMRTR092718WMA.M
Quant Title : TRACE VOA SOM01.0

TIC Library : C:\DATABASE\NIST11.L
TIC Integration Parameters: LSCINT.P

No Library Search Compounds Detected

Data Path : Z:\VOASRV\HPCHEM1\MSVOA_R\DATA\VR092818\
Data File : VR025896.D
Acq On : 28 Sep 2018 12:24
Operator : SY/MD
Sample : VR0928WBL01
Misc : 25mL/MSVOA_R/WATER
ALS Vial : 3 Sample Multiplier: 1

Instrument :
MSVOA_R
ClientSampleId :
VBLK06

Quant Method : Z:\VOASRV\HPCHEM1\MSVOA_R\METHODS\SOMRTR092718WMA.M
Quant Title : TRACE VOA SOM01.0

TIC Library : C:\DATABASE\NIST11.L
TIC Integration Parameters: LSCINT.P

TIC Top Hit name	RT	EstConc	Units	Response	--Internal Standard--			
					#	RT	Resp	Conc
