

Data Path : Z:\VOASRV\HPCHEM1\MSVOA R\DATA\VR100518\
 Data File : VR025967.D
 Acq On : 5 Oct 2018 22:36
 Operator : SY/MD
 Sample : J5276-12
 Misc : 25mL/MSVOA R/WATER
 ALS Vial : 21 Sample Multiplier: 1

Instrument :
 MSVOA_R
 ClientSampled :

Quant Time: Oct 06 05:31:21 2018
 Quant Method : Z:\VOASRV\HPCHEM1\MSVOA_R\METHODS\SOMRTR092718WMA.M
 Quant Title : TRACE VOA SOM01.0
 QLast Update : Sat Oct 06 05:30:02 2018
 Response via : Initial Calibration

Internal Standards	R.T.	QIon	Response	Conc	Units	Dev(Min)
1) 1,4-Difluorobenzene	8.46	114	394215	5.00	ug/L	0.00
28) Chlorobenzene-d5	11.29	117	336577	5.00	ug/L	0.00
60) 1,4-Dichlorobenzene-d4	13.22	152	111831	5.00	ug/L	0.00

System Monitoring Compounds

4) Vinyl Chloride-d3	2.15	65	101646	3.27	ug/L	-0.01
Spiked Amount	5.000	Range	40 - 130	Recovery	=	65.40%
7) Chloroethane-d5	2.63	69	111792	4.40	ug/L	0.00
Spiked Amount	5.000	Range	65 - 130	Recovery	=	88.00%
11) 1,1-Dichloroethene-d2	3.63	63	196486	2.69	ug/L	0.00
Spiked Amount	5.000	Range	60 - 125	Recovery	=	53.80%#
20) 2-Butanone-d5	6.59	46	180791	52.17	ug/L	0.00
Spiked Amount	50.000	Range	40 - 130	Recovery	=	104.34%
24) Chloroform-d	7.20	84	215024	3.97	ug/L	0.00
Spiked Amount	5.000	Range	70 - 125	Recovery	=	79.40%
26) 1,2-Dichloroethane-d4	7.90	65	101654	4.37	ug/L	0.00
Spiked Amount	5.000	Range	70 - 130	Recovery	=	87.40%
32) Benzene-d6	7.86	84	396925	3.54	ug/L	0.00
Spiked Amount	5.000	Range	70 - 125	Recovery	=	70.80%
36) 1,2-Dichloropropane-d6	8.90	67	119894	3.97	ug/L	0.00
Spiked Amount	5.000	Range	60 - 140	Recovery	=	79.40%
41) Toluene-d8	9.97	98	337814	3.21	ug/L	0.00
Spiked Amount	5.000	Range	70 - 130	Recovery	=	64.20%#
43) trans-1,3-Dichloropropene-	10.24	79	23488	3.43	ug/L	0.00
Spiked Amount	5.000	Range	55 - 130	Recovery	=	68.60%
46) 2-Hexanone-d5	10.59	63	137576	52.65	ug/L	0.00
Spiked Amount	50.000	Range	45 - 130	Recovery	=	105.30%
57) 1,1,2,2-Tetrachloroethane-	12.36	84	54487	4.45	ug/L	0.00
Spiked Amount	5.000	Range	65 - 120	Recovery	=	89.00%
64) 1,2-Dichlorobenzene-d4	13.51	152	74956	4.19	ug/L	0.00
Spiked Amount	5.000	Range	80 - 120	Recovery	=	83.80%

Target Compounds

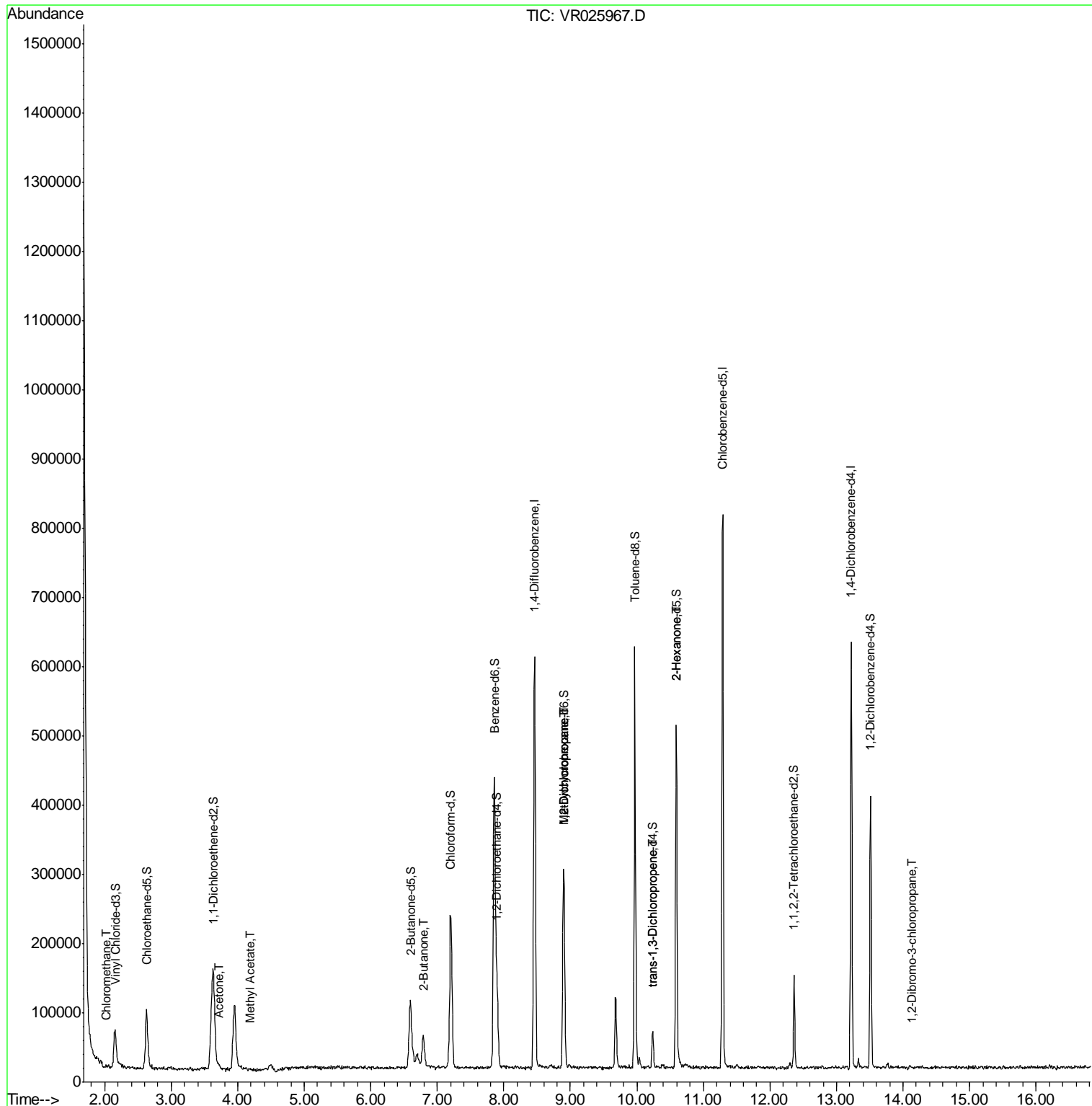
Target Compounds	R.T.	QIon	Response	Conc	Units	Ovalue
3) Chloromethane	2.01	50	3357	0.099	ug/L #	58
13) Acetone	3.72	43	9276	3.693	ug/L	98
15) Methyl Acetate	4.19	43	2139	0.307	ug/L	94
21) 2-Butanone	6.78	43	78940	22.848	ug/L #	52
35) Methylcyclohexane	8.89	83	27759	0.621	ug/L #	16
37) 1,2-Dichloropropane	8.90	63	16436	0.679	ug/L	98
44) trans-1,3-Dichloropropene	10.24	75	1967	0.111	ug/L	88
48) 2-Hexanone	10.59	43	22979	4.121	ug/L #	71
66) 1,2-Dibromo-3-chloropropan	14.14	75	386	0.350	ug/L #	53

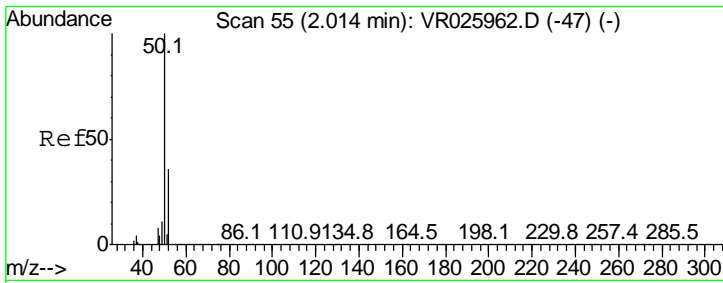
(#) = qualifier out of range (m) = manual integration (+) = signals summed

Data Path : Z:\VOASRV\HPCHEM1\MSVOA R\DATA\VR100518\
 Data File : VR025967.D
 Acq On : 5 Oct 2018 22:36
 Operator : SY/MD
 Sample : J5276-12
 Misc : 25mL/MSVOA R/WATER
 ALS Vial : 21 Sample Multiplier: 1

Instrument :
 MSVOA_R
 ClientSampleId :

Quant Time: Oct 06 05:31:21 2018
 Quant Method : Z:\VOASRV\HPCHEM1\MSVOA_R\METHODS\SOMRTR092718WMA.M
 Quant Title : TRACE VOA SOM01.0
 QLast Update : Sat Oct 06 05:30:02 2018
 Response via : Initial Calibration

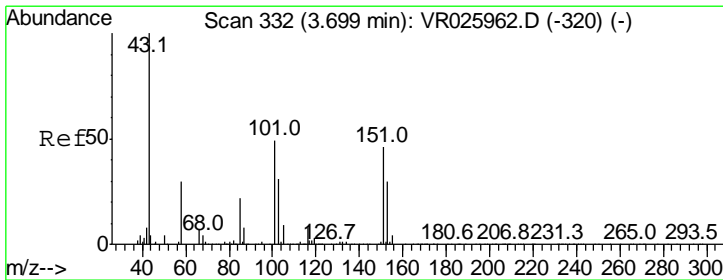
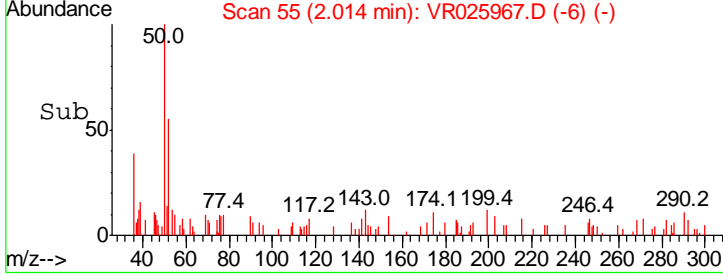
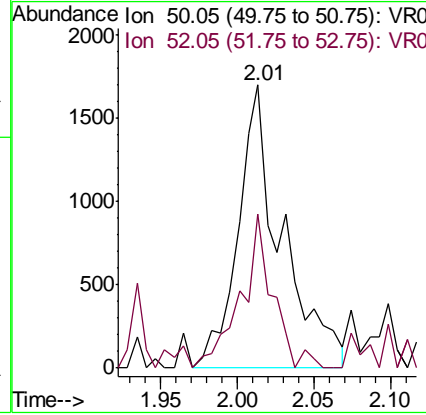
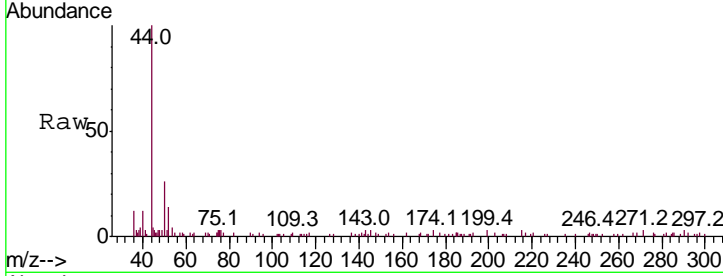




#3
 Chloromethane
 Concen: 0.099 ug/L
 RT: 2.01 min Scan# 55
 Delta R.T. -0.00 min
 Lab File: VR025967.D
 Acq: 5 Oct 2018 22:36

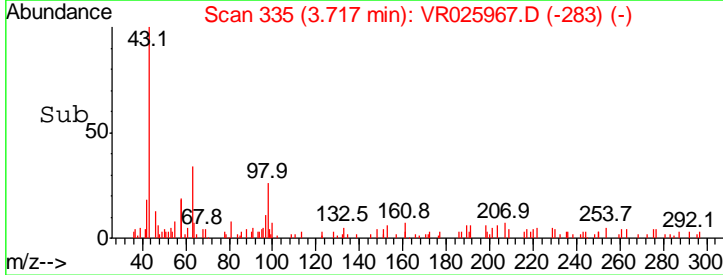
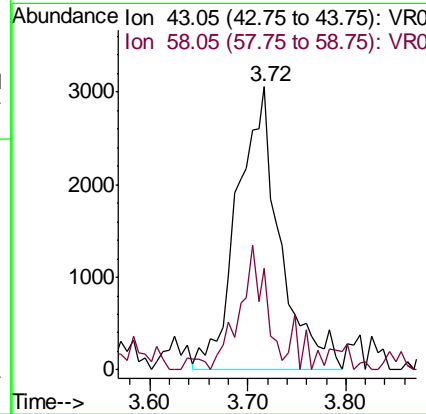
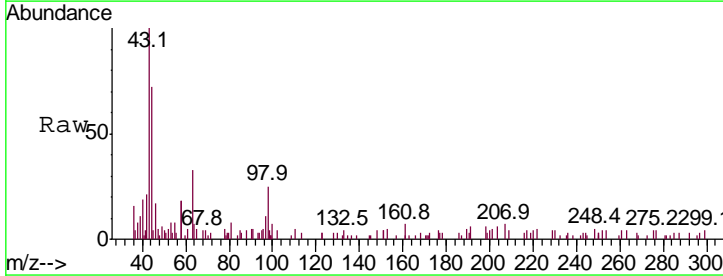
Instrument :
 MSVOA_R
 ClientSampled :

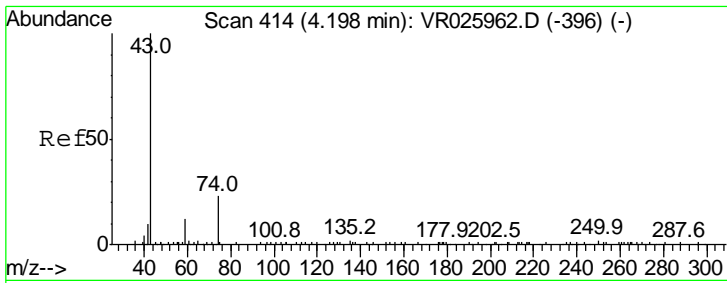
Tgt Ion	Ratio	Lower	Upper
50	100		
52	54.7	22.1	41.1#



#13
 Acetone
 Concen: 3.693 ug/L
 RT: 3.72 min Scan# 335
 Delta R.T. 0.02 min
 Lab File: VR025967.D
 Acq: 5 Oct 2018 22:36

Tgt Ion	Ratio	Lower	Upper
43	100		
58	26.6	0.0	51.4

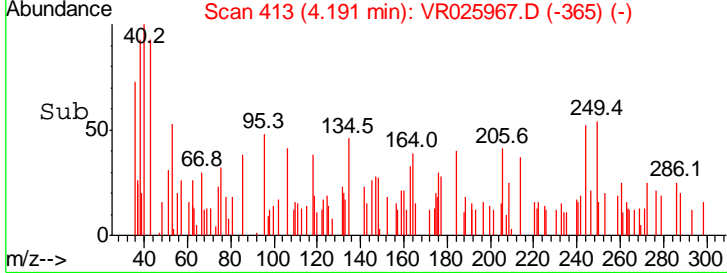
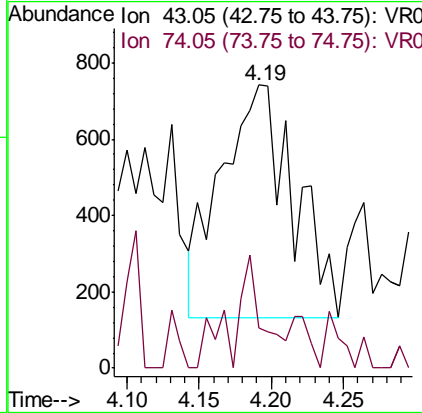
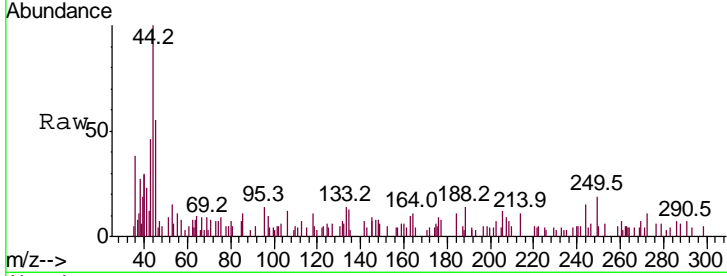




#15
 Methyl Acetate
 Concen: 0.307 ug/L
 RT: 4.19 min Scan# 413
 Delta R.T. -0.01 min
 Lab File: VR025967.D
 Acq: 5 Oct 2018 22:36

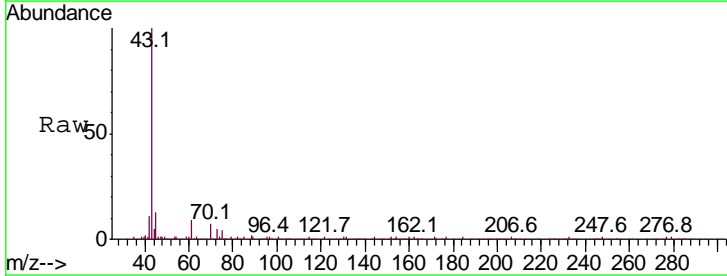
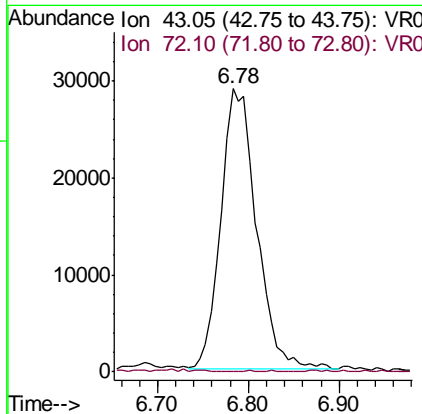
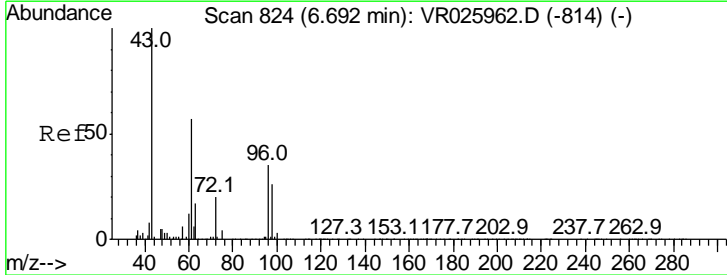
Instrument :
 MSVOA_R
 ClientSampled :

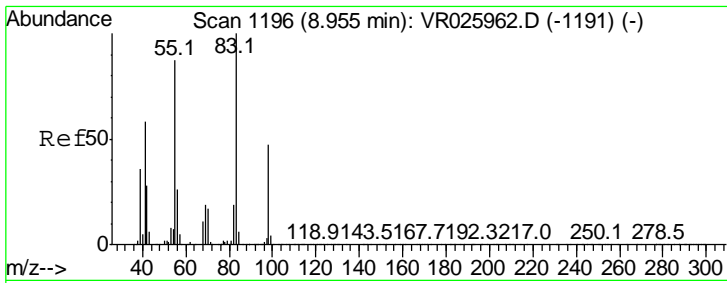
Tgt Ion	Ratio	Lower	Upper
43	100		
74	20.5	19.0	28.4



#21
 2-Butanone
 Concen: 22.848 ug/L
 RT: 6.78 min Scan# 839
 Delta R.T. 0.09 min
 Lab File: VR025967.D
 Acq: 5 Oct 2018 22:36

Tgt Ion	Ratio	Lower	Upper
43	100		
72	0.3	11.9	35.7#

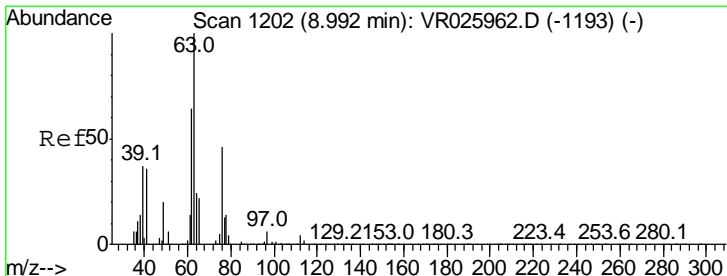
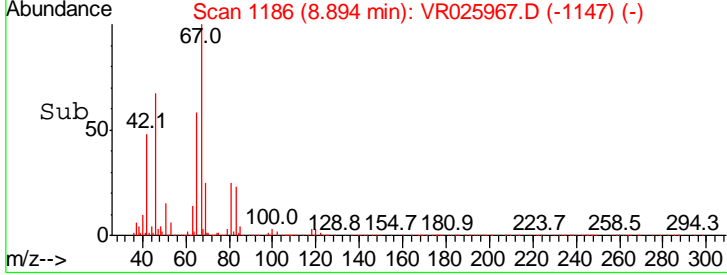
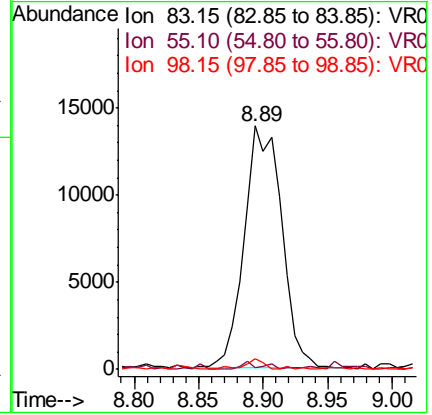
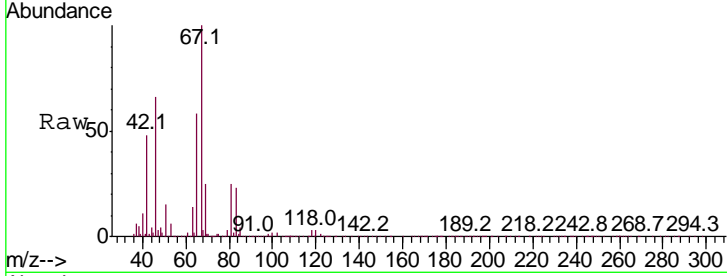




#35
 Methylcyclohexane
 Concen: 0.621 ug/L
 RT: 8.89 min Scan# 1186
 Delta R.T. -0.06 min
 Lab File: VR025967.D
 Acq: 5 Oct 2018 22:36

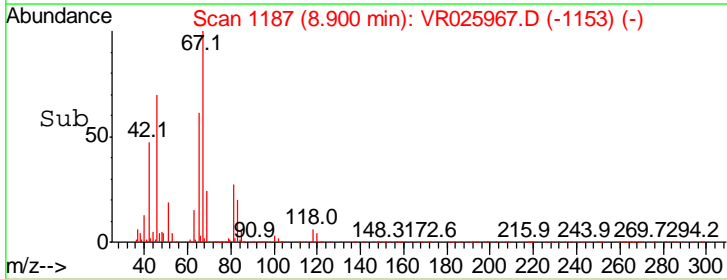
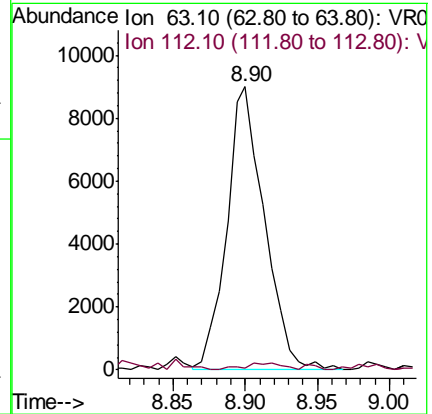
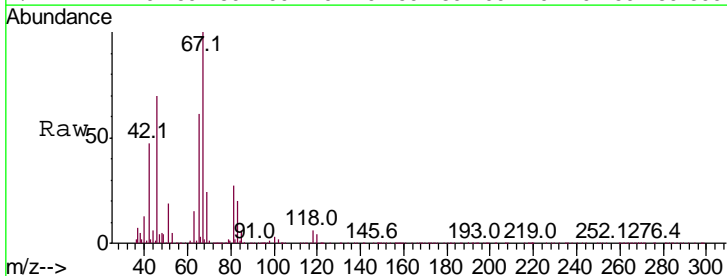
Instrument :
 MSVOA_R
 ClientSampled :

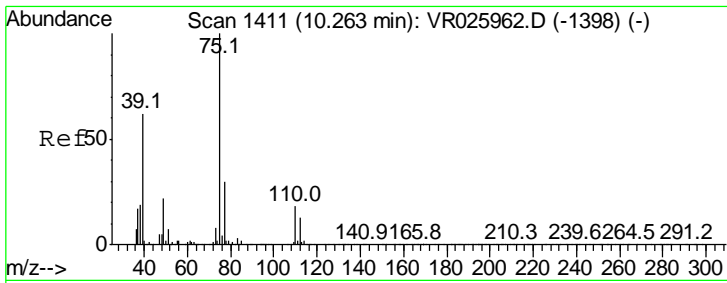
Tgt Ion	Resp	Lower	Upper
83	100		
55	1.1	71.8	107.6#
98	2.2	34.2	51.4#



#37
 1,2-Dichloropropane
 Concen: 0.679 ug/L
 RT: 8.90 min Scan# 1187
 Delta R.T. -0.09 min
 Lab File: VR025967.D
 Acq: 5 Oct 2018 22:36

Tgt Ion	Resp	Lower	Upper
63	100		
112	2.5	2.5	3.7

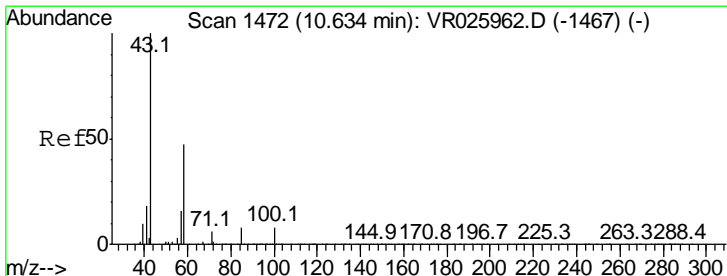
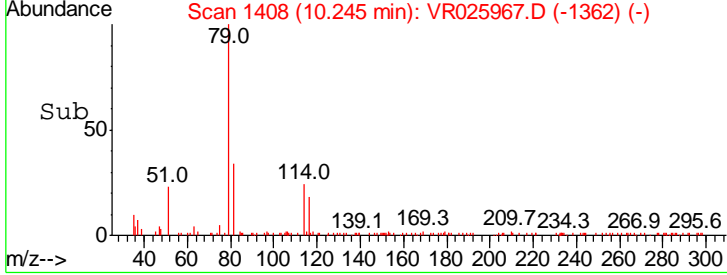
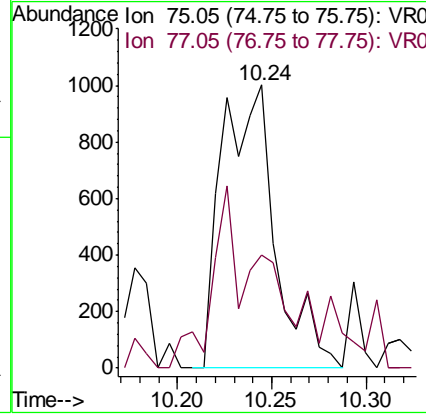
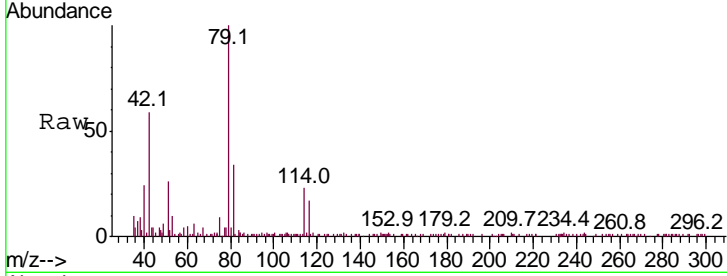




#44
 trans-1,3-Dichloropropene
 Concen: 0.111 ug/L
 RT: 10.24 min Scan# 1408
 Delta R.T. -0.02 min
 Lab File: VR025967.D
 Acq: 5 Oct 2018 22:36

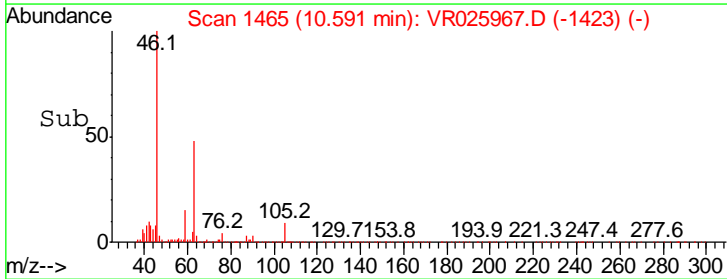
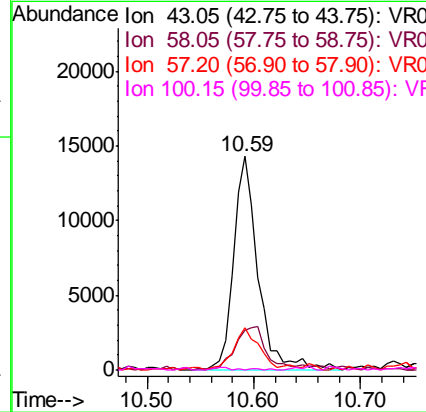
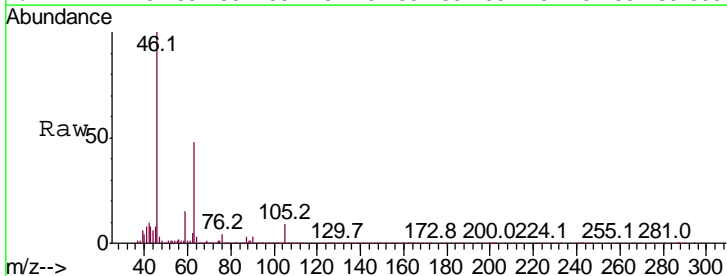
Instrument : MSVOA_R
 ClientSampled :

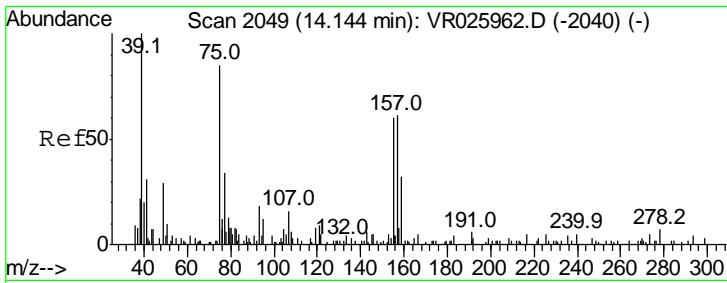
Tgt Ion	Resp	Lower	Upper
75	1967		
75	100		
77	39.9	23.0	42.8



#48
 2-Hexanone
 Concen: 4.121 ug/L
 RT: 10.59 min Scan# 1465
 Delta R.T. -0.04 min
 Lab File: VR025967.D
 Acq: 5 Oct 2018 22:36

Tgt Ion	Resp	Lower	Upper
43	22979		
43	100		
58	23.8	39.5	59.3#
57	21.5	14.6	21.8
100	0.5	6.7	10.1#





#66
 1,2-Dibromo-3-chloropropane
 Concen: 0.350 ug/L
 RT: 14.14 min Scan# 2048
 Delta R.T. -0.01 min
 Lab File: VR025967.D
 Acq: 5 Oct 2018 22:36

Instrument :
 MSVOA_R
 ClientSampled :

Tot Ion	Resp	Lower	Upper
75	386		
75	100		
155	108.6	37.8	56.6#
157	52.2	49.7	74.5

