

Data Path : Z:\VOASRV\HPCHEM1\MSVOA R\DATA\VR100818\  
 Data File : VR025991.D  
 Acq On : 8 Oct 2018 17:53  
 Operator : SY/MD  
 Sample : J5279-05  
 Misc : 25mL/MSVOA R/WATER  
 ALS Vial : 14 Sample Multiplier: 1

Instrument :  
 MSVOA\_R  
 ClientSampled :  
 BEYG2

Integration Parameters: rteint.p  
 Integrator: RTE  
 Smoothing : ON  
 Sampling : 1  
 Start Thrs: 0.2  
 Stop Thrs : 0

Filtering: 5  
 Min Area: 3 % of largest Peak  
 Max Peaks: 100  
 Peak Location: TOP

If leading or trailing edge < 100 prefer < Baseline drop else tangent >  
 Peak separation: 5

Method : Z:\VOASRV\HPCHEM1\MSVOA\_R\METHODS\SOMRTR092718WMA.M  
 Title : TRACE VOA SOM01.0

Signal : TIC

peak #	R.T. min	first scan	max scan	last scan	PK TY	peak height	corr. area	corr. % max.	% of total
1	2.147	70	77	79	rBV3	78928	135047	8.09%	1.110%
2	2.628	148	156	166	rBV	120310	301395	18.04%	2.477%
3	3.632	305	321	332	rBV2	232512	868636	52.01%	7.138%
4	3.948	364	373	385	rBV	80058	251723	15.07%	2.068%
5	6.594	799	808	819	rBV2	110059	328938	19.69%	2.703%
6	7.209	895	909	920	rBV	299746	750813	44.95%	6.170%
7	7.854	1005	1015	1031	rBV2	598141	1670254	100.00%	13.725%
8	8.462	1106	1115	1123	rBV	608722	1131889	67.77%	9.301%
9	8.900	1179	1187	1195	rBV	383619	745772	44.65%	6.128%
10	9.679	1307	1315	1323	rBV	160555	273730	16.39%	2.249%
11	9.971	1355	1363	1371	rBV	940397	1487124	89.04%	12.220%
12	10.238	1400	1407	1416	rBV	81791	144502	8.65%	1.187%
13	10.384	1426	1431	1435	rBV5	11323	21759	1.30%	0.179%
14	10.591	1458	1465	1475	rBV	571895	903063	54.07%	7.421%
15	11.291	1573	1580	1590	rBV	831146	1242480	74.39%	10.210%
16	12.301	1741	1746	1751	rBV6	11700	21590	1.29%	0.177%
17	12.362	1751	1756	1762	rVB	150495	225789	13.52%	1.855%
18	13.219	1891	1897	1906	rBV	615162	885409	53.01%	7.276%
19	13.511	1939	1945	1953	rBV	533055	779483	46.67%	6.405%

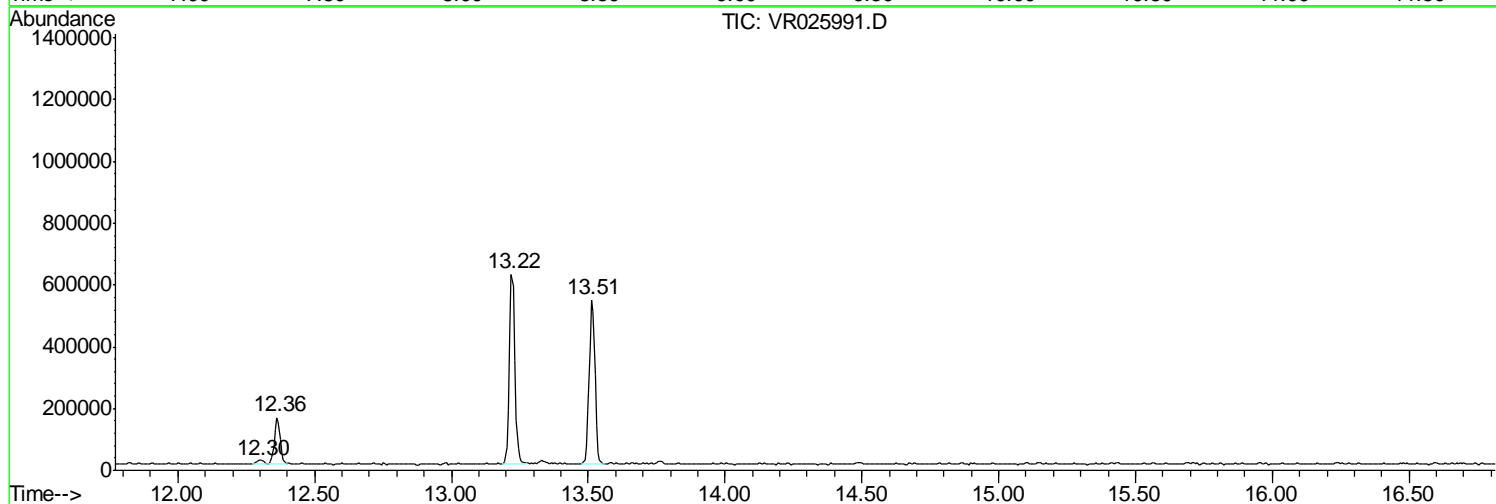
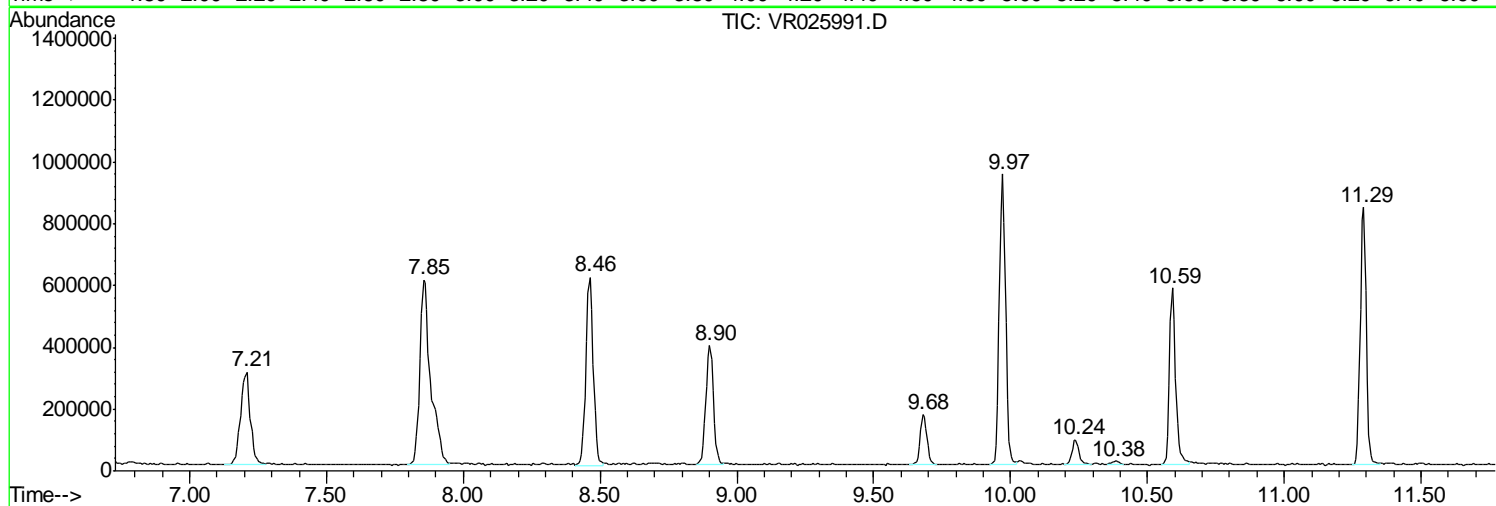
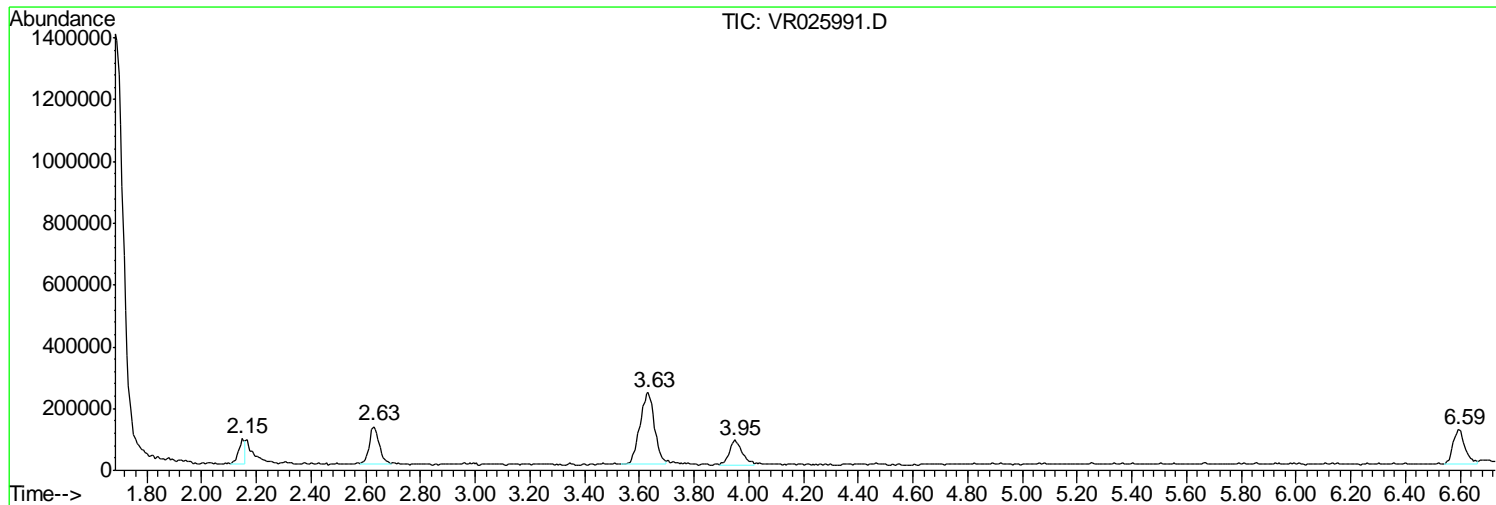
Sum of corrected areas: 12169396

Data Path : Z:\VOASRV\HPCHEM1\MSVOA R\DATA\VR100818\  
Data File : VR025991.D  
Acq On : 8 Oct 2018 17:53  
Operator : SY/MD  
Sample : J5279-05  
Misc : 25mL/MSVOA R/WATER  
ALS Vial : 14 Sample Multiplier: 1

Instrument :  
MSVOA\_R  
ClientSampled :  
BEYG2

Quant Method : Z:\VOASRV\HPCHEM1\MSVOA\_R\METHODS\SOMRTR092718WMA.M  
Quant Title : TRACE VOA SOM01.0

TIC Library : C:\DATABASE\NIST11.L  
TIC Integration Parameters: LSCINT.P



Data Path : Z:\VOASRV\HPCHEM1\MSVOA R\DATA\VR100818\  
 Data File : VR025991.D  
 Acq On : 8 Oct 2018 17:53  
 Operator : SY/MD  
 Sample : J5279-05  
 Misc : 25mL/MSVOA R/WATER  
 ALS Vial : 14 Sample Multiplier: 1

Instrument :  
 MSVOA\_R  
 ClientSampleID :  
 BEYG2

Quant Method : Z:\VOASRV\HPCHEM1\MSVOA\_R\METHODS\SOMRTR092718WMA.M  
 Quant Title : TRACE VOA SOM01.0

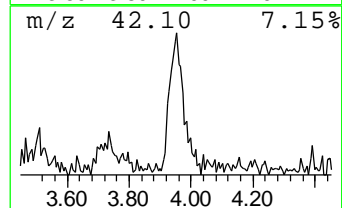
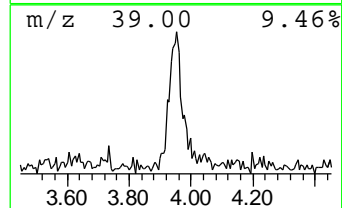
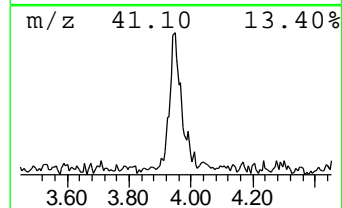
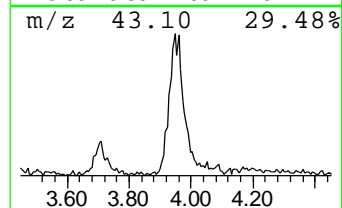
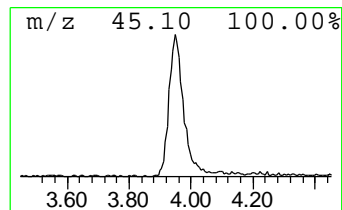
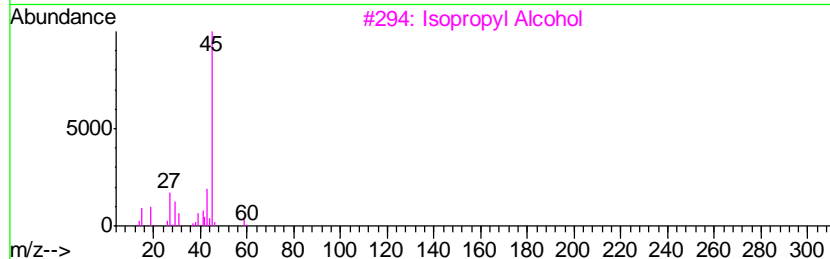
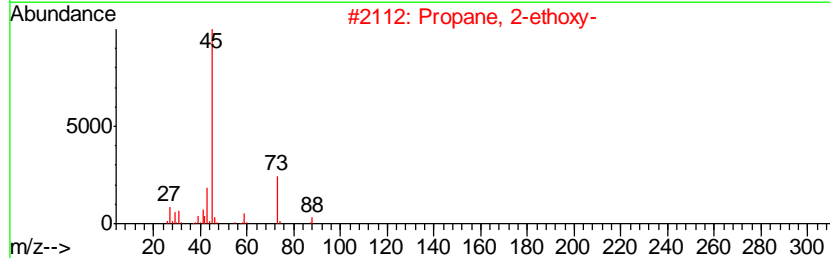
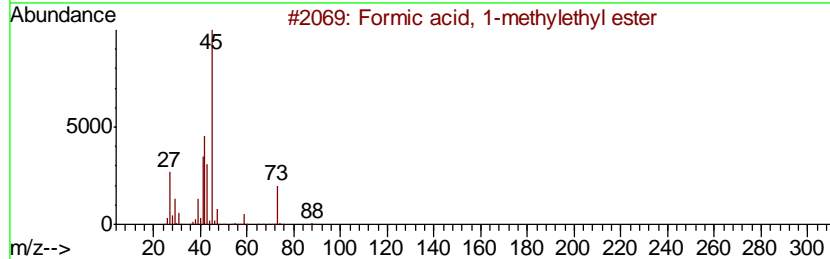
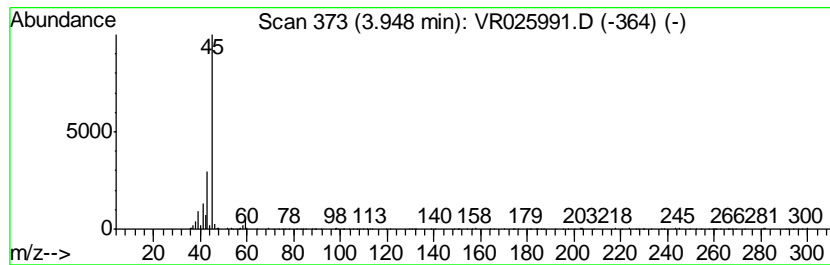
TIC Library : C:\DATABASE\NIST11.L  
 TIC Integration Parameters: LSCINT.P

\*\*\*\*\*  
 Peak Number 1 Isopropyl Alcohol Concentration Rank 2

R.T.	EstConc	Area	Relative to ISTD	R.T.
3.95	1.11 ug/L	251723	1,4-Difluorobenzene	8.46

Hit#	of	Tentative ID	MW	MolForm	CAS#	Qual
1	5	Formic acid, 1-methylethyl ester	88	C4H8O2	000625-55-8	50
2		Propane, 2-ethoxy-	88	C5H12O	000625-54-7	50
3		Isopropyl Alcohol	60	C3H8O	000067-63-0	50
4		Isopropyl Alcohol	60	C3H8O	000067-63-0	50
5		Propane, 2-ethoxy-	88	C5H12O	000625-54-7	50



Data Path : Z:\VOASRV\HPCHEM1\MSVOA\_R\DATA\VR100818\  
Data File : VR025991.D  
Acq On : 8 Oct 2018 17:53  
Operator : SY/MD  
Sample : J5279-05  
Misc : 25mL/MSVOA\_R/WATER  
ALS Vial : 14 Sample Multiplier: 1

Instrument :  
MSVOA\_R  
ClientSampleId :  
BEYG2

Quant Method : Z:\VOASRV\HPCHEM1\MSVOA\_R\METHODS\SOMRTR092718WMA.M  
Quant Title : TRACE VOA SOM01.0

TIC Library : C:\DATABASE\NIST11.L  
TIC Integration Parameters: LSCINT.P

TIC Top Hit name	RT	EstConc	Units	Response	--Internal Standard--			
					#	RT	Resp	Conc
Isopropyl Alcohol	3.95	1.1	ug/L	251723	1	8.46	1131890	5.0