

Data Path : Z:\VOASRV\HPCHEM1\MSVOA R\DATA\VR101018\
 Data File : VR026028.D
 Acq On : 10 Oct 2018 14:15
 Operator : SY/MD
 Sample : J5380-01
 Misc : 25mL/MSVOA R/WATER
 ALS Vial : 9 Sample Multiplier: 1

Instrument :
 MSVOA_R
 ClientSampleId :
 C0T17

Quant Time: Oct 11 04:48:31 2018
 Quant Method : Z:\VOASRV\HPCHEM1\MSVOA_R\METHODS\SOMRTR092718WMA.M
 Quant Title : TRACE VOA SOM01.0
 QLast Update : Thu Oct 11 04:11:41 2018
 Response via : Initial Calibration

Internal Standards	R.T.	QIon	Response	Conc	Units	Dev(Min)
1) 1,4-Difluorobenzene	8.46	114	451647	5.00	ug/L	0.00
28) Chlorobenzene-d5	11.29	117	384386	5.00	ug/L	0.00
60) 1,4-Dichlorobenzene-d4	13.22	152	128207	5.00	ug/L	0.00

System Monitoring Compounds

4) Vinyl Chloride-d3	2.15	65	149171	4.19	ug/L	0.00
Spiked Amount	5.000	Range	40 - 130	Recovery	=	83.80%
7) Chloroethane-d5	2.63	69	143289	4.92	ug/L	0.00
Spiked Amount	5.000	Range	65 - 130	Recovery	=	98.40%
11) 1,1-Dichloroethene-d2	3.61	63	268418	3.21	ug/L	-0.02
Spiked Amount	5.000	Range	60 - 125	Recovery	=	64.20%
20) 2-Butanone-d5	6.59	46	189860	47.82	ug/L	0.00
Spiked Amount	50.000	Range	40 - 130	Recovery	=	95.64%
24) Chloroform-d	7.20	84	257587	4.16	ug/L	0.00
Spiked Amount	5.000	Range	70 - 125	Recovery	=	83.20%
26) 1,2-Dichloroethane-d4	7.90	65	116573	4.37	ug/L	0.01
Spiked Amount	5.000	Range	70 - 130	Recovery	=	87.40%
32) Benzene-d6	7.85	84	480857	3.76	ug/L	0.00
Spiked Amount	5.000	Range	70 - 125	Recovery	=	75.20%
36) 1,2-Dichloropropane-d6	8.90	67	140926	4.09	ug/L	0.00
Spiked Amount	5.000	Range	60 - 140	Recovery	=	81.80%
41) Toluene-d8	9.97	98	423431	3.52	ug/L	0.00
Spiked Amount	5.000	Range	70 - 130	Recovery	=	70.40%
43) trans-1,3-Dichloropropene-	10.24	79	30223	3.86	ug/L	0.00
Spiked Amount	5.000	Range	55 - 130	Recovery	=	77.20%
46) 2-Hexanone-d5	10.59	63	140148	46.96	ug/L	0.00
Spiked Amount	50.000	Range	45 - 130	Recovery	=	93.92%
57) 1,1,2,2-Tetrachloroethane-	12.36	84	56717	4.05	ug/L	0.00
Spiked Amount	5.000	Range	65 - 120	Recovery	=	81.00%
64) 1,2-Dichlorobenzene-d4	13.52	152	91803	4.47	ug/L	0.00
Spiked Amount	5.000	Range	80 - 120	Recovery	=	89.40%

Target Compounds

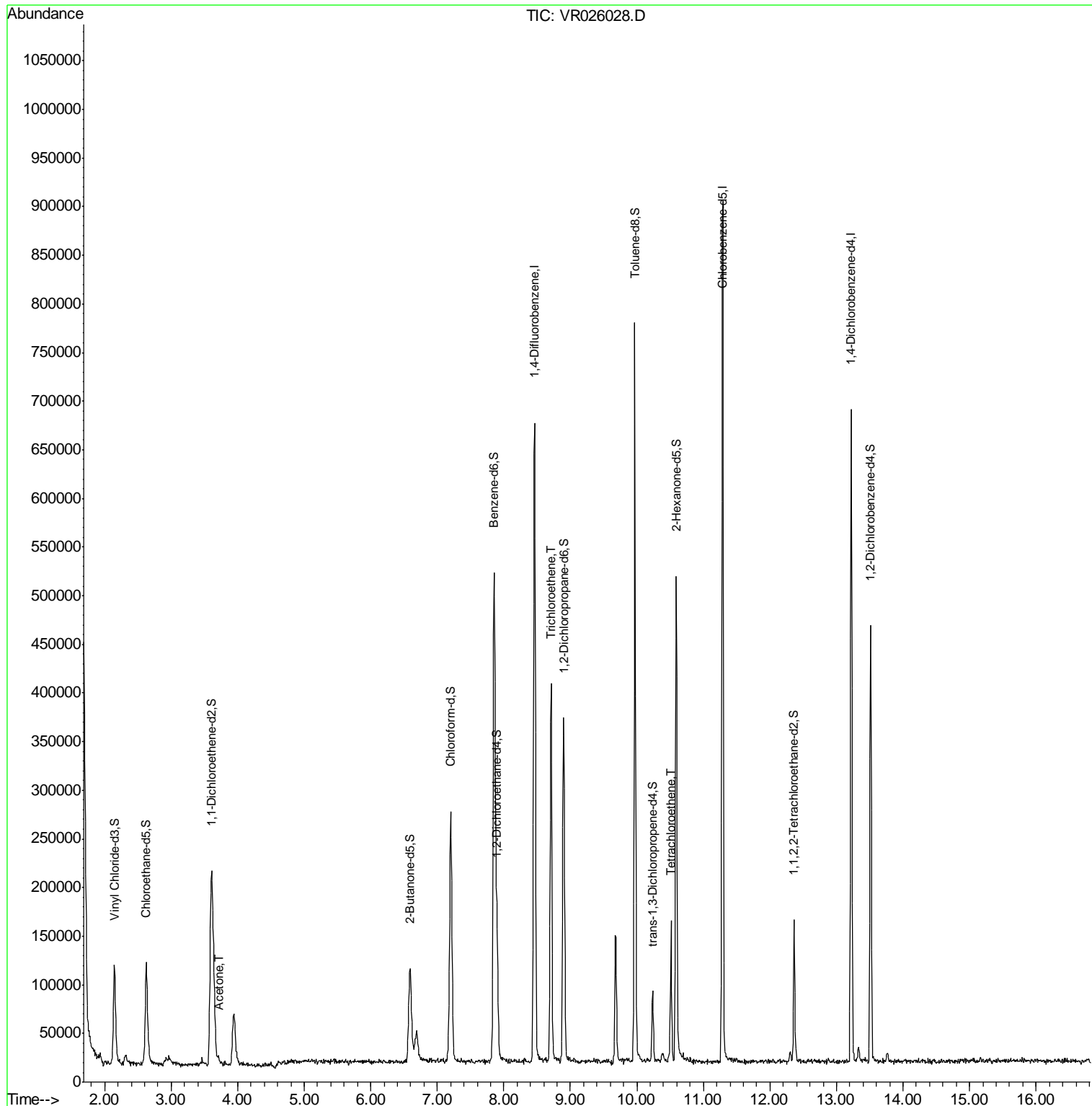
Target Compounds	R.T.	QIon	Response	Conc	Units	Ovalue
13) Acetone	3.70	43	6234	2.166	ug/L	65
34) Trichloroethene	8.71	95	115524	3.401	ug/L	89
47) Tetrachloroethene	10.51	164	22723	1.086	ug/L	93

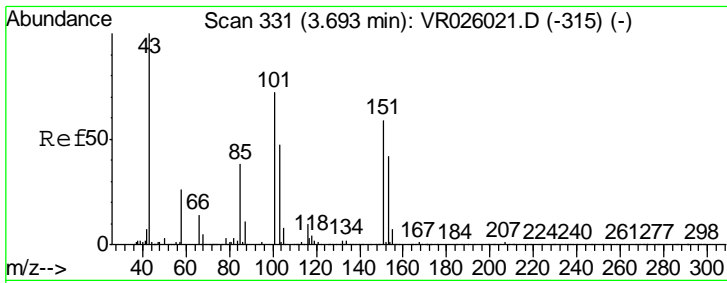
(#) = qualifier out of range (m) = manual integration (+) = signals summed

Data Path : Z:\VOASRV\HPCHEM1\MSVOA R\DATA\VR101018\
 Data File : VR026028.D
 Acq On : 10 Oct 2018 14:15
 Operator : SY/MD
 Sample : J5380-01
 Misc : 25mL/MSVOA R/WATER
 ALS Vial : 9 Sample Multiplier: 1

Instrument :
 MSVOA_R
 ClientSampled :
 C0T17

Quant Time: Oct 11 04:48:31 2018
 Quant Method : Z:\VOASRV\HPCHEM1\MSVOA_R\METHODS\SOMRTR092718WMA.M
 Quant Title : TRACE VOA SOM01.0
 QLast Update : Thu Oct 11 04:11:41 2018
 Response via : Initial Calibration

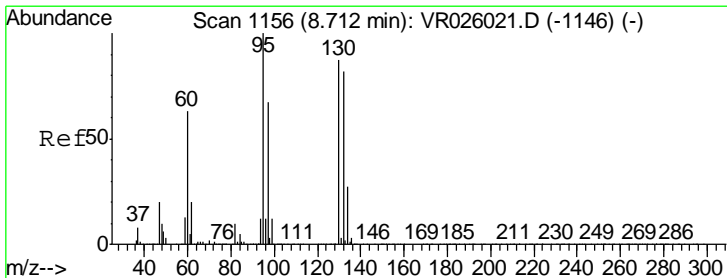
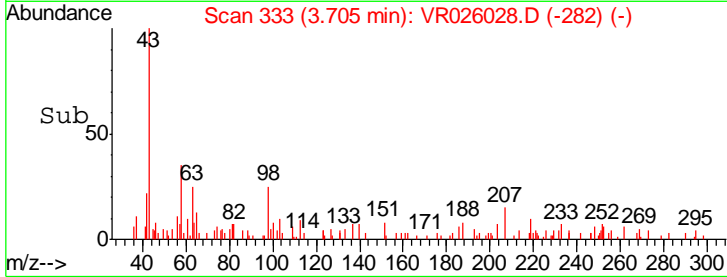
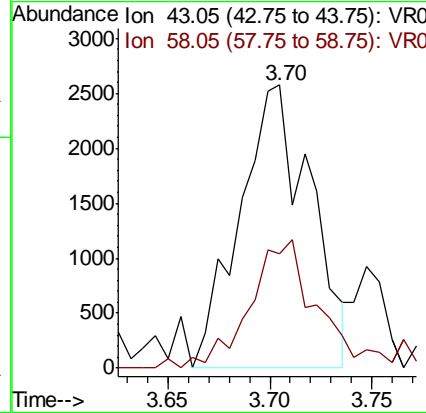
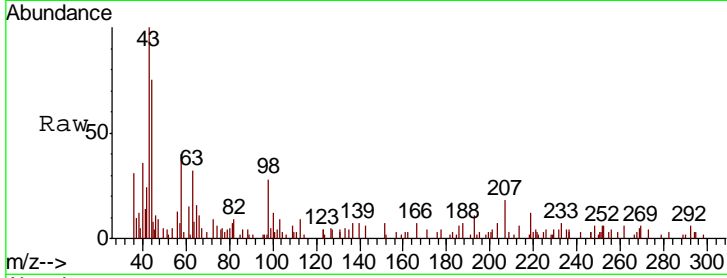




#13
 Acetone
 Concen: 2.166 ug/L
 RT: 3.70 min Scan# 333
 Delta R.T. 0.01 min
 Lab File: VR026028.D
 Acq: 10 Oct 2018 14:15

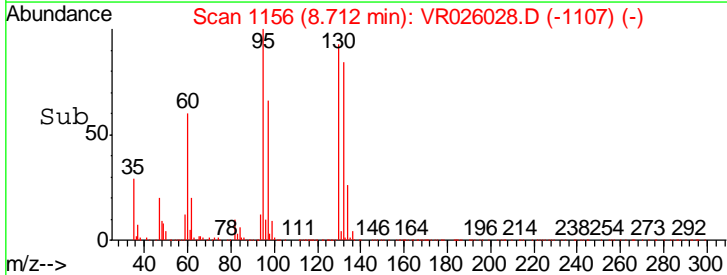
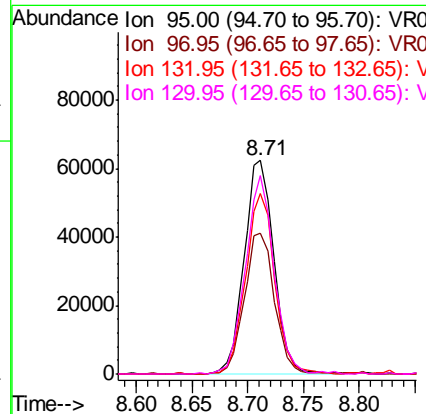
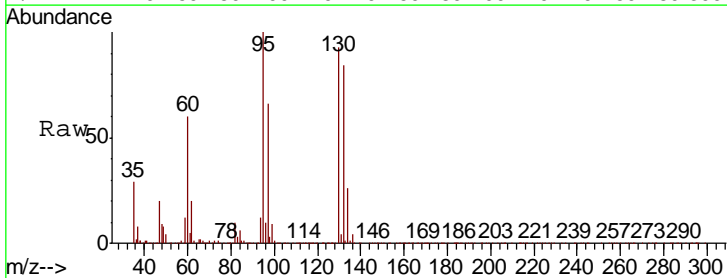
Instrument :
 MSVOA_R
 ClientSampled :
 C0T17

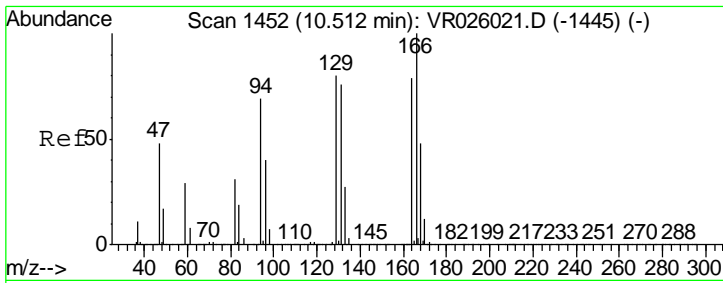
Tgt Ion: 43 Resp: 6234
 Ion Ratio Lower Upper
 43 100
 58 43.3 0.0 51.4



#34
 Trichloroethene
 Concen: 3.401 ug/L
 RT: 8.71 min Scan# 1156
 Delta R.T. 0.00 min
 Lab File: VR026028.D
 Acq: 10 Oct 2018 14:15

Tgt Ion: 95 Resp: 115524
 Ion Ratio Lower Upper
 95 100
 97 65.9 43.9 81.5
 132 84.2 53.3 98.9
 130 93.1 53.8 99.8



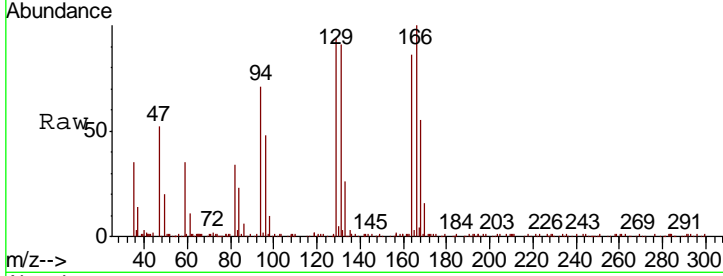


#47
 Tetrachloroethene
 Concen: 1.086 ug/L
 RT: 10.51 min Scan# 1452
 Delta R.T. 0.00 min
 Lab File: VR026028.D
 Acq: 10 Oct 2018 14:15

Instrument : MSVOA_R
 ClientSampled : COT17

Tot Ion:164 Resp: 22723

Ion	Ratio	Lower	Upper
164	100		
129	109.6	80.8	150.2
131	106.4	74.5	138.3
166	116.7	92.5	171.7



Abundance Ion 163.90 (163.60 to 164.60): V
 Ion 128.95 (128.65 to 129.65): V
 Ion 130.95 (130.65 to 131.65): V
 Ion 165.90 (165.60 to 166.60): V

