

Data File : VR026210.D
 Acq On : 8 Nov 2018 11:40
 Operator : SY/MD
 Sample : VR1108WBL01
 Misc : 25mL/MSVOA_R/WATER
 ALS Vial : 3 Sample Multiplier: 1

Instrument :
 MSVOA_R
 ClientSampleId :
 VBLK94

Quant Time: Nov 08 14:21:35 2018
 Quant Method : Z:\VOASRV\HPCHEM1\MSVOA_R\METHODS\SOMRTR101518WMA.M
 Quant Title : TRACE VOA SOM01.0
 QLast Update : Tue Nov 06 15:50:53 2018
 Response via : Initial Calibration

Internal Standards	R.T.	QIon	Response	Conc	Units	Dev(Min)
1) 1,4-Difluorobenzene	8.46	114	583130	5.00	ug/L	0.00
28) Chlorobenzene-d5	11.29	117	474858	5.00	ug/L	0.00
60) 1,4-Dichlorobenzene-d4	13.23	152	145192	5.00	ug/L	0.00

System Monitoring Compounds

4) Vinyl Chloride-d3	2.15	65	255931	5.01	ug/L	0.00
Spiked Amount	5.000	Range	40 - 130	Recovery	=	100.20%
7) Chloroethane-d5	2.63	69	227839	5.19	ug/L	0.00
Spiked Amount	5.000	Range	65 - 130	Recovery	=	103.80%
11) 1,1-Dichloroethene-d2	3.61	63	478863	3.82	ug/L	0.00
Spiked Amount	5.000	Range	60 - 125	Recovery	=	76.40%
20) 2-Butanone-d5	6.59	46	202552	48.34	ug/L	0.01
Spiked Amount	50.000	Range	40 - 130	Recovery	=	96.68%
24) Chloroform-d	7.20	84	387725	4.78	ug/L	0.00
Spiked Amount	5.000	Range	70 - 125	Recovery	=	95.60%
26) 1,2-Dichloroethane-d4	7.90	65	155068	4.60	ug/L	0.00
Spiked Amount	5.000	Range	70 - 130	Recovery	=	92.00%
32) Benzene-d6	7.85	84	784163	5.14	ug/L	0.00
Spiked Amount	5.000	Range	70 - 125	Recovery	=	102.80%
36) 1,2-Dichloropropane-d6	8.90	67	204325	5.19	ug/L	0.00
Spiked Amount	5.000	Range	60 - 140	Recovery	=	103.80%
41) Toluene-d8	9.97	98	744138	5.16	ug/L	0.00
Spiked Amount	5.000	Range	70 - 130	Recovery	=	103.20%
43) trans-1,3-Dichloropropene-	10.24	79	46278	4.48	ug/L	0.00
Spiked Amount	5.000	Range	55 - 130	Recovery	=	89.60%
46) 2-Hexanone-d5	10.59	63	146314	49.04	ug/L	0.00
Spiked Amount	50.000	Range	45 - 130	Recovery	=	98.08%
57) 1,1,2,2-Tetrachloroethane-	12.36	84	71827	4.65	ug/L	0.00
Spiked Amount	5.000	Range	65 - 120	Recovery	=	93.00%
64) 1,2-Dichlorobenzene-d4	13.52	152	129961	5.66	ug/L	0.00
Spiked Amount	5.000	Range	80 - 120	Recovery	=	113.20%

Target Compounds

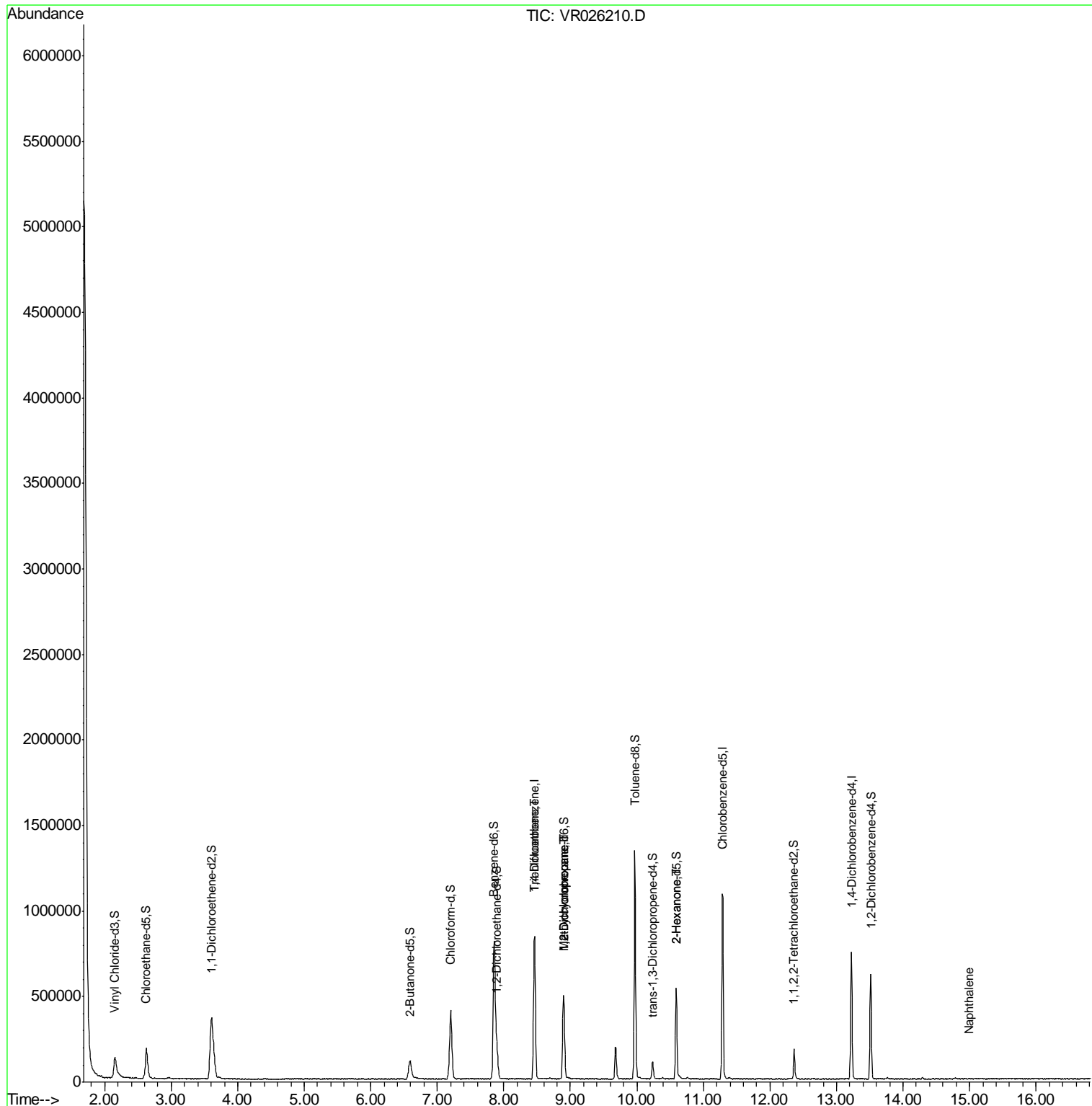
					Qvalue
34) Trichloroethene	8.46	95	19843	0.435 ug/L #	10
35) Methylcyclohexane	8.89	83	47522	0.700 ug/L #	18
37) 1,2-Dichloropropane	8.90	63	26443	0.703 ug/L #	92
48) 2-Hexanone	10.59	43	21865	2.916 ug/L #	69
69) Naphthalene	15.00	128	1360	0.082 ug/L #	72

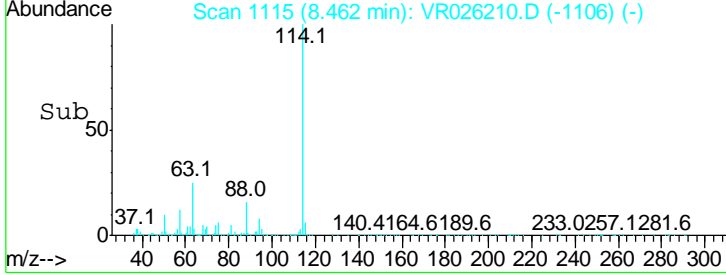
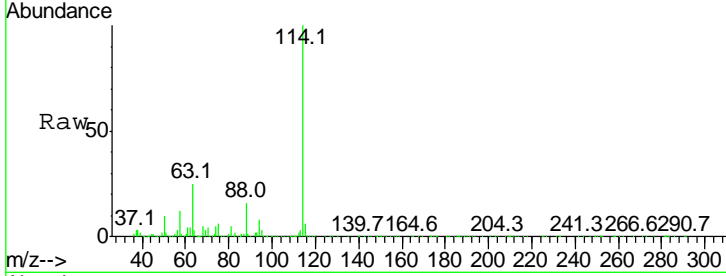
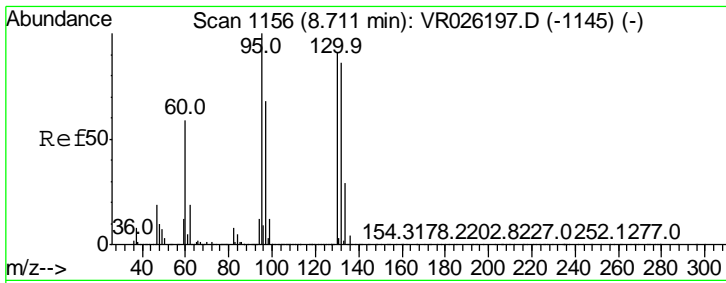
(#) = qualifier out of range (m) = manual integration (+) = signals summed

Data File : VR026210.D
Acq On : 8 Nov 2018 11:40
Operator : SY/MD
Sample : VR1108WBL01
Misc : 25mL/MSVOA_R/WATER
ALS Vial : 3 Sample Multiplier: 1

Instrument :
MSVOA_R
ClientSampleId :
VBLK94

Quant Time: Nov 08 14:21:35 2018
Quant Method : Z:\VOASRV\HPCHEM1\MSVOA_R\METHODS\SOMRTR101518WMA.M
Quant Title : TRACE VOA SOM01.0
QLast Update : Tue Nov 06 15:50:53 2018
Response via : Initial Calibration

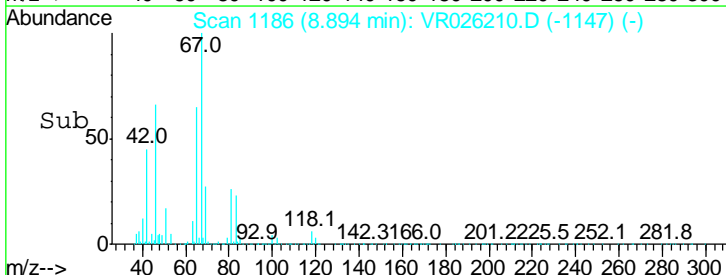
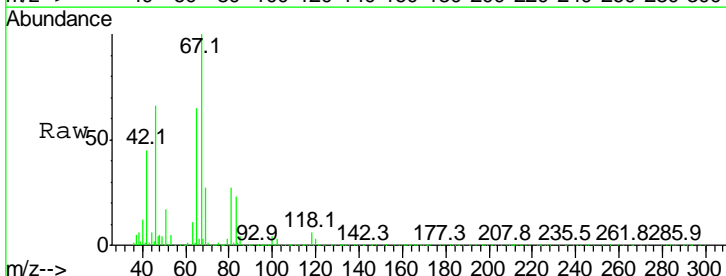
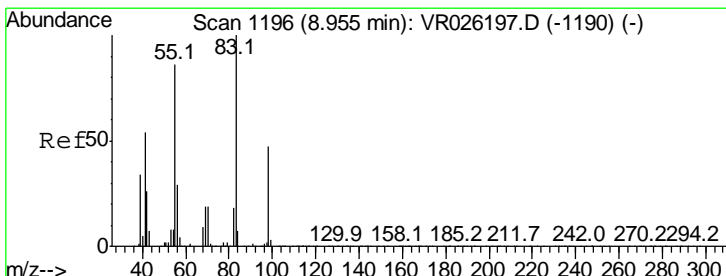
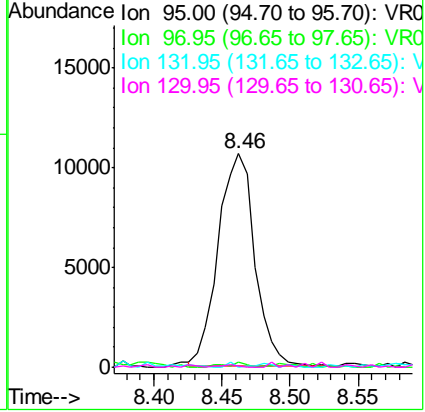




#34
 Trichloroethene
 Concen: 0.435 ug/L
 RT: 8.46 min Scan# 1115
 Delta R.T. -0.24 min
 Lab File: VR026210.D
 Acq: 8 Nov 2018 11:40

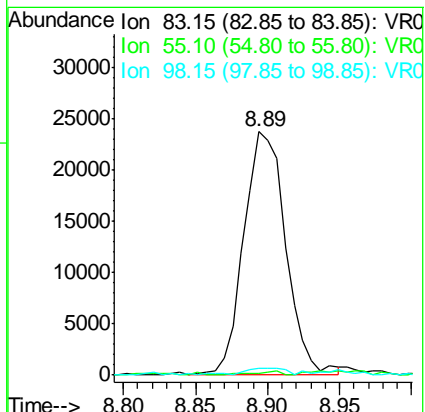
Tgt Ion	Resp	Lower	Upper
95	19843		
95	100		
97	2.2	45.7	84.9#
132	0.0	58.3	108.3#
130	0.5	64.0	119.0#

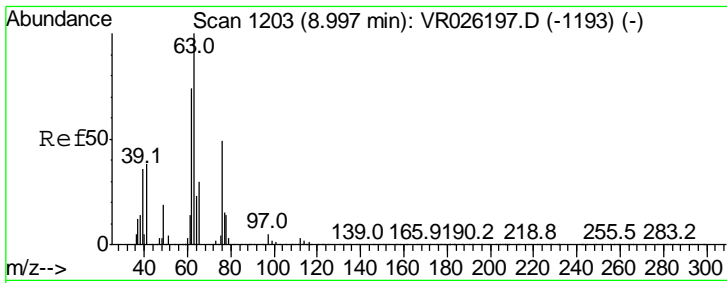
Instrument : MSVOA_R
 ClientSampled : VBLK94



#35
 Methylcyclohexane
 Concen: 0.700 ug/L
 RT: 8.89 min Scan# 1186
 Delta R.T. -0.06 min
 Lab File: VR026210.D
 Acq: 8 Nov 2018 11:40

Tgt Ion	Resp	Lower	Upper
83	47522		
83	100		
55	1.2	66.8	100.2#
98	2.7	35.2	52.8#

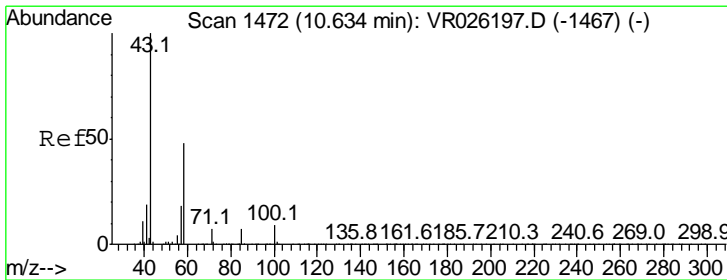
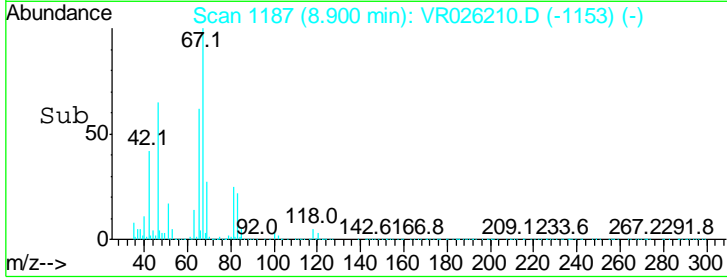
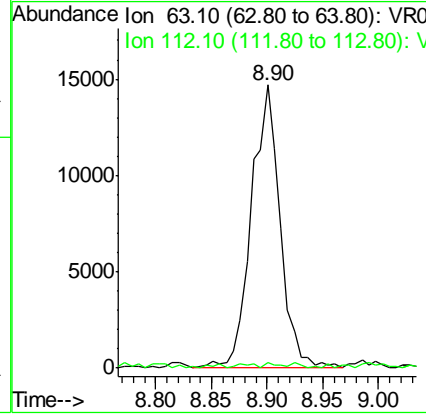
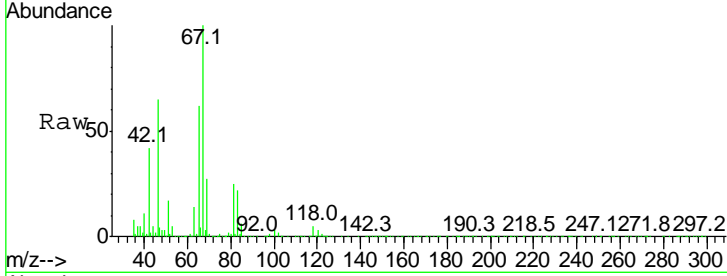




#37
 1,2-Dichloropropane
 Concen: 0.703 ug/L
 RT: 8.90 min Scan# 1187
 Delta R.T. -0.09 min
 Lab File: VR026210.D
 Acq: 8 Nov 2018 11:40

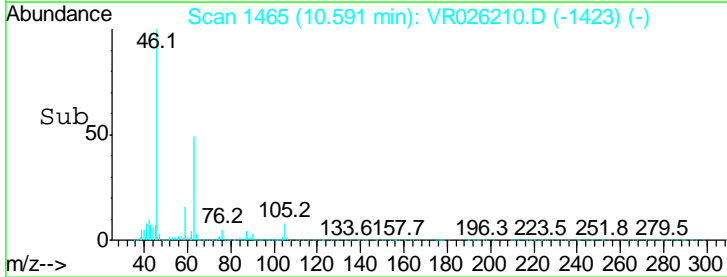
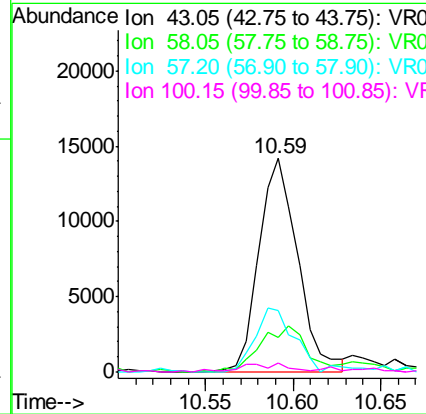
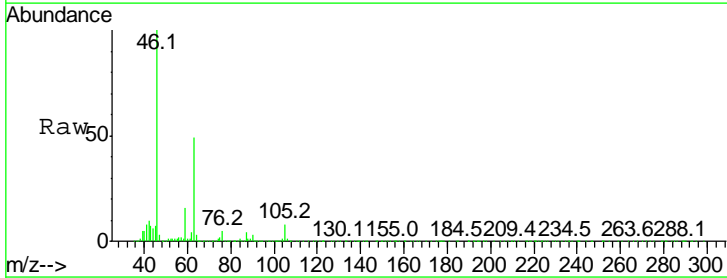
Instrument :
 MSVOA_R
 ClientSampled :
 VBLK94

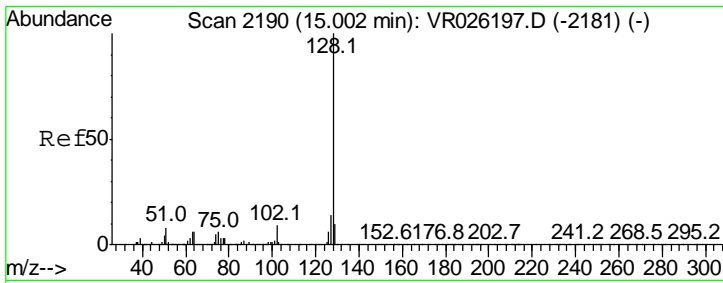
Tgt Ion: 63 Resp: 26443
 Ion Ratio Lower Upper
 63 100
 112 0.7 2.7 4.1#



#48
 2-Hexanone
 Concen: 2.916 ug/L
 RT: 10.59 min Scan# 1465
 Delta R.T. -0.04 min
 Lab File: VR026210.D
 Acq: 8 Nov 2018 11:40

Tgt Ion: 43 Resp: 21865
 Ion Ratio Lower Upper
 43 100
 58 25.7 39.6 59.4#
 57 30.9 14.0 21.0#
 100 5.3 7.0 10.6#





#69
 Naphthalene
 Concen: 0.082 ug/L
 RT: 15.00 min Scan# 2189
 Delta R.T. -0.01 min
 Lab File: VR026210.D
 Acq: 8 Nov 2018 11:40

Instrument : MSVOA_R
 ClientSampled : VBLK94

Tgt Ion	Resp	Lower	Upper
128	1360		
127	31.5	11.0	16.6#
129	8.1	9.1	13.7#

