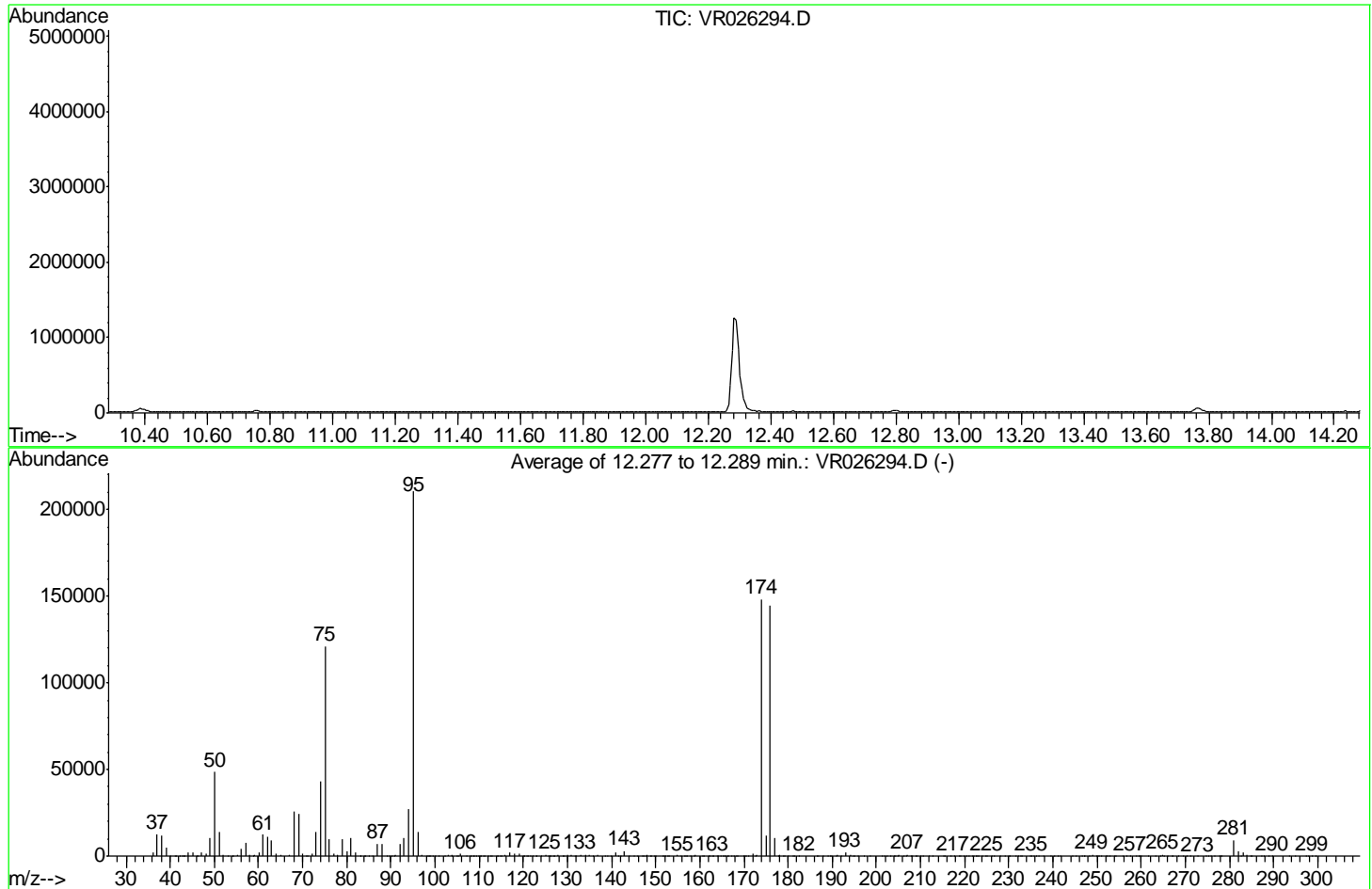


Data Path : Z:\VOASRV\HPCHEM1\MSVOA_R\DATA\VR122418\
 Data File : VR026294.D
 Acq On : 24 Dec 2018 9:39
 Operator : SY/MD
 Sample : BFB81
 Misc : 25mL/MSVOA_R/WATER
 ALS Vial : 1 Sample Multiplier: 1

Instrument :
 MSVOA_R
 ClientSampleId :
 BFB81

Integration File: rteint.p

Method : Z:\VOASRV\HPCHEM1\MSVOA_R\METHODS\SOMRTR121718WMA.M
 Title : TRACE VOA SOM01.0
 Last Update : Mon Dec 24 22:50:14 2018



AutoFind: Scans 1742, 1743, 1744; Background Corrected with Scan 1730

Target Mass	Rel. to Mass	Lower Limit%	Upper Limit%	Rel. Abn%	Raw Abn	Result Pass/Fail
50	95	15	40	23.1	48522	PASS
75	95	30	80	57.5	120929	PASS
95	95	100	100	100.0	210482	PASS
96	95	5	9	6.7	14040	PASS
173	174	0.00	2	0.6	909	PASS
174	95	50	120	70.5	148333	PASS
175	174	5	9	7.8	11581	PASS
176	174	95	101	97.6	144794	PASS
177	176	5	9	7.0	10179	PASS

m/z	Abundance
36.00	1668.0
37.10	10613.0
38.10	11342.0
39.10	4936.0
40.00	862.0
41.00	237.0
41.50	81.0
41.70	75.0
42.70	234.0
44.10	1812.0
45.10	1918.0
46.00	282.0
47.00	1497.0
48.10	932.0
49.10	9721.0
50.10	40960.0
51.10	12981.0
52.00	816.0
53.00	343.0
54.10	107.0
55.10	679.0
56.10	2896.0
57.10	8037.0
58.00	511.0
58.80	338.0
60.00	2107.0
61.10	9381.0
62.10	8330.0
63.10	7890.0
64.00	1237.0
65.10	1054.0
66.20	184.0
67.10	798.0
68.00	21960.0
69.00	19792.0
70.10	1310.0
71.00	267.0
72.10	1445.0
73.10	11098.0
74.10	34384.0
75.10	97912.0
76.10	8142.0
77.10	1421.0
77.90	619.0
79.00	8268.0
79.90	2295.0
81.00	9009.0
81.90	2319.0
83.00	373.0
84.30	64.0
84.90	62.0
85.90	296.0
87.10	4728.0
88.00	5279.0
90.80	685.0
92.00	5758.0
93.00	8223.0
94.00	21288.0
95.10	167552.0
96.10	11329.0
97.00	350.0
103.00	372.0
103.80	531.0
105.00	273.0
105.90	1067.0
106.80	193.0
107.20	133.0
107.80	98.0
108.60	148.0
109.30	69.0
109.90	162.0
110.50	263.0
110.80	389.0
111.90	200.0
112.70	271.0
114.90	263.0
115.90	832.0
116.90	1166.0
118.00	740.0
118.90	1062.0
120.10	99.0
121.80	105.0
124.00	98.0
125.00	250.0
126.00	80.0
126.70	163.0
127.00	154.0
127.90	791.0
128.90	429.0
130.00	553.0
130.90	198.0
133.10	466.0

Instrument :
MSVOA_R
ClientSampleId :
BFB81

134.10	264.0
135.00	482.0
135.70	174.0
136.90	349.0
137.90	102.0
139.20	210.0
139.90	85.0
140.10	96.0
141.00	1808.0
141.60	250.0
142.90	1813.0
144.00	286.0
145.00	478.0
145.90	187.0
146.80	66.0
147.20	99.0
147.80	236.0
148.80	428.0
149.60	107.0
150.10	212.0
151.70	174.0
152.20	109.0
152.90	63.0
154.10	219.0
155.10	376.0
155.50	130.0
156.10	215.0
156.80	159.0
157.90	99.0
159.00	351.0
160.60	139.0
162.30	130.0
164.90	86.0
165.70	80.0
166.20	174.0
167.10	173.0
168.30	92.0
169.20	83.0
169.80	151.0
170.20	84.0
170.40	80.0
170.70	77.0
171.00	121.0
172.00	1367.0
172.70	941.0
173.00	1232.0
174.00	100296.0
175.00	7750.0
176.00	96656.0
177.00	5959.0
177.70	340.0
178.10	153.0
178.80	50.0
179.30	65.0
180.00	87.0
181.00	134.0
182.60	51.0
186.00	60.0
186.90	72.0
190.80	243.0
192.00	96.0
193.10	331.0
194.00	69.0
194.90	217.0
195.80	125.0
199.40	56.0
200.80	185.0
202.00	67.0
204.80	144.0
205.90	60.0
206.80	212.0
208.90	77.0
209.30	56.0
210.50	147.0
211.90	70.0
216.50	57.0
217.30	89.0
217.70	116.0
218.30	63.0
219.70	51.0
220.40	53.0
222.20	80.0
222.60	51.0
222.80	50.0
223.10	54.0
225.10	155.0
227.20	80.0
229.20	115.0
231.20	76.0
232.10	52.0
232.90	192.0
235.40	56.0
239.40	52.0
244.50	54.0
245.20	62.0
246.50	70.0

Instrument :
MSVOA_R
ClientSampleId :
BFB81

247.00	149.0
247.60	62.0
248.20	126.0
249.00	206.0
249.80	128.0
251.00	59.0
251.70	80.0
254.00	150.0
256.00	55.0
258.80	135.0
260.10	57.0
262.10	70.0
265.20	417.0
268.20	91.0
269.40	72.0
269.60	73.0
270.20	148.0
272.90	79.0
274.70	130.0
275.70	90.0
279.30	51.0
281.10	1361.0
282.10	314.0
282.70	136.0
284.10	186.0
287.60	105.0
288.90	70.0
291.90	112.0
293.50	82.0
297.80	71.0
298.90	116.0

Instrument :
MSVOA_R
ClientSampleId :
BFB81

m/z	Abundance
35.10	323.0
35.80	335.0
38.10	183.0
39.10	103.0
40.00	817.0
40.90	125.0
41.20	110.0
41.90	245.0
43.10	209.0
43.80	561.0
44.70	183.0
45.70	66.0
49.80	144.0
51.00	116.0
52.40	70.0
52.80	67.0
53.00	71.0
53.90	116.0
54.70	101.0
55.30	176.0
56.10	91.0
59.80	132.0
62.40	125.0
63.00	97.0
63.60	83.0
64.50	53.0
65.40	76.0
66.20	112.0
67.20	180.0
70.10	91.0
71.60	51.0
72.60	53.0
74.50	116.0
75.10	164.0
77.00	52.0
78.10	202.0
78.90	95.0
79.20	94.0
80.00	73.0
80.70	83.0
81.60	50.0
83.20	71.0
84.70	87.0
85.40	146.0
87.00	56.0
88.70	52.0
92.00	96.0
92.30	111.0
93.30	81.0
95.10	99.0
96.20	75.0
96.90	137.0
97.70	63.0
101.10	85.0
101.70	54.0
102.70	114.0
104.10	51.0
105.60	102.0
106.10	59.0
106.90	101.0
109.00	171.0
110.40	104.0
111.70	64.0
112.60	65.0
117.10	80.0
119.40	104.0
120.00	105.0
121.70	330.0
123.90	138.0
124.50	79.0
125.30	143.0
127.90	153.0
130.10	53.0
130.30	63.0
131.30	89.0
133.10	184.0
133.50	116.0
134.70	60.0
136.00	136.0
137.20	83.0
138.00	96.0
140.00	104.0
142.70	123.0
143.70	65.0
144.80	65.0
145.80	62.0
151.10	134.0
153.40	161.0
153.90	135.0
155.40	70.0
156.20	120.0
158.00	64.0

Instrument :
MSVOA_R
ClientSampleId :
BFB81

160.30	58.0
162.10	58.0
164.50	109.0
166.60	50.0
168.10	164.0
169.40	124.0
170.80	117.0
173.50	75.0
175.30	118.0
176.40	67.0
176.90	223.0
178.20	66.0
179.90	131.0
182.00	101.0
182.90	98.0
184.00	72.0
185.80	96.0
189.70	84.0
192.70	110.0
193.60	189.0
194.90	78.0
196.70	59.0
198.40	210.0
199.40	108.0
200.10	81.0
200.90	93.0
201.60	50.0
202.80	91.0
203.40	52.0
205.80	50.0
209.30	61.0
212.30	100.0
213.70	135.0
216.10	57.0
216.50	89.0
217.20	61.0
218.40	56.0
220.00	68.0
221.00	59.0
224.70	51.0
227.40	109.0
229.00	53.0
229.50	83.0
231.20	55.0
234.40	121.0
237.00	74.0
238.10	119.0
238.80	111.0
246.10	88.0
247.60	148.0
248.70	128.0
249.30	62.0
250.20	52.0
251.60	90.0
253.10	141.0
253.30	123.0
254.60	55.0
255.20	58.0
257.20	122.0
262.10	94.0
262.70	130.0
264.50	141.0
268.00	145.0
268.50	110.0
269.10	124.0
271.80	158.0
272.80	91.0
274.00	57.0
279.30	104.0
280.10	50.0
281.90	162.0
287.30	73.0
288.60	63.0
290.80	135.0
291.40	78.0
292.00	151.0
295.70	53.0
296.60	93.0

Instrument :
MSVOA_R
ClientSampleId :
BFB81

m/z	Abundance
36.10	1970.0
37.10	12244.0
38.10	11220.0
39.10	4606.0
40.00	1383.0
40.80	250.0
41.10	286.0
41.30	276.0
42.00	216.0
43.00	252.0
43.30	215.0
44.10	2547.0
45.10	2852.0
46.00	207.0
47.10	2527.0
48.00	1389.0
49.10	9788.0
50.10	49120.0
51.10	14469.0
52.10	959.0
52.70	68.0
53.20	89.0
53.70	139.0
54.20	70.0
55.20	767.0
56.00	4632.0
57.10	7510.0
58.00	626.0
59.10	1454.0
60.00	2649.0
61.00	11967.0
62.00	12082.0
63.00	9789.0
64.10	1180.0
65.00	899.0
67.10	1052.0
68.00	26608.0
69.10	24120.0
70.10	1661.0
70.70	214.0
72.10	1846.0
73.10	15296.0
74.00	44136.0
75.10	127640.0
76.10	9518.0
76.90	1694.0
78.10	1196.0
78.90	10080.0
80.00	3131.0
81.00	10496.0
82.00	2186.0
83.10	510.0
83.90	137.0
84.20	161.0
85.00	197.0
85.90	398.0
87.10	7948.0
88.00	6713.0
89.10	238.0
89.50	296.0
90.20	220.0
90.90	1268.0
92.00	6688.0
93.00	10047.0
94.10	28176.0
95.10	221248.0
96.10	14890.0
97.10	759.0
98.10	80.0
98.30	62.0
98.80	88.0
99.40	64.0
100.10	57.0
100.80	94.0
101.10	86.0
101.80	87.0
102.20	64.0
103.00	835.0
103.90	1538.0
104.80	227.0
105.90	1474.0
107.00	345.0
107.80	139.0
108.10	84.0
108.60	134.0
109.00	109.0
110.20	344.0
110.90	429.0
111.70	168.0
112.10	256.0
112.60	183.0
113.00	343.0

Instrument :
MSVOA_R
ClientSampleId :
BFB81

113.80	158.0
115.10	416.0
116.00	887.0
117.00	1875.0
117.90	1612.0
119.00	2415.0
119.80	200.0
120.30	102.0
121.10	290.0
122.00	276.0
123.00	93.0
124.00	129.0
125.00	1509.0
125.70	320.0
125.90	328.0
126.20	285.0
127.10	94.0
128.00	891.0
129.10	286.0
130.00	848.0
131.00	700.0
131.70	183.0
132.00	217.0
133.00	2233.0
134.10	675.0
134.90	685.0
135.10	654.0
135.80	146.0
136.90	540.0
138.20	57.0
139.00	199.0
139.80	413.0
140.90	2348.0
142.00	422.0
143.00	3496.0
143.80	81.0
144.90	211.0
145.90	453.0
146.90	803.0
147.90	1219.0
148.90	354.0
149.90	268.0
151.90	260.0
152.60	76.0
153.40	112.0
153.60	115.0
155.00	484.0
156.90	553.0
158.00	99.0
159.00	604.0
160.80	455.0
162.10	186.0
163.00	478.0
164.10	182.0
165.10	351.0
165.70	97.0
166.30	79.0
167.00	91.0
167.60	71.0
169.80	335.0
170.90	191.0
172.00	936.0
172.90	1495.0
174.00	173504.0
175.00	12869.0
176.00	169664.0
177.00	12904.0
178.00	610.0
178.90	655.0
179.90	340.0
181.90	62.0
182.50	143.0
182.90	90.0
184.00	69.0
186.80	177.0
187.00	188.0
189.10	171.0
189.90	280.0
191.10	1884.0
192.00	498.0
193.00	4764.0
194.00	734.0
195.00	828.0
197.10	194.0
198.60	55.0
199.40	66.0
201.30	94.0
202.30	57.0
203.10	151.0
204.30	93.0
205.00	871.0
207.10	2425.0
207.90	392.0
209.10	399.0
210.10	149.0
215.20	111.0

Instrument :
MSVOA_R
ClientSampleId :
BFB81

215.90	53.0
216.90	53.0
217.50	78.0
218.40	100.0
219.00	81.0
221.00	196.0
221.70	94.0
222.00	177.0
222.90	62.0
223.80	50.0
224.90	132.0
226.20	61.0
226.60	69.0
227.90	69.0
230.20	213.0
231.10	66.0
231.60	106.0
232.70	130.0
234.60	315.0
234.90	232.0
235.10	210.0
236.30	164.0
236.80	59.0
237.00	59.0
246.10	55.0
248.10	91.0
249.00	1819.0
250.00	507.0
251.00	724.0
251.90	141.0
252.70	102.0
253.00	166.0
254.30	52.0
256.70	53.0
259.30	86.0
259.70	155.0
259.90	194.0
260.20	137.0
261.50	70.0
262.00	69.0
263.20	159.0
265.00	1921.0
266.10	672.0
267.10	412.0
267.80	187.0
269.20	81.0
271.10	79.0
271.80	179.0
277.70	109.0
278.00	104.0
278.30	99.0
279.20	116.0
281.10	19480.0
282.10	5627.0
283.00	4547.0
284.10	857.0
285.10	291.0
287.70	82.0
290.60	60.0
294.90	94.0
296.60	60.0
297.30	83.0
298.70	74.0
299.60	156.0

Instrument :
MSVOA_R
ClientSampleId :
BFB81

m/z	Abundance
35.20	146.0
36.00	2882.0
37.00	14846.0
38.10	13691.0
39.10	4602.0
40.00	1317.0
41.10	430.0
42.20	284.0
43.10	410.0
44.00	2690.0
45.10	2474.0
45.80	342.0
46.20	294.0
47.10	2116.0
48.00	1729.0
49.10	11213.0
50.10	55488.0
51.10	15526.0
52.10	1317.0
53.10	286.0
53.80	137.0
54.30	55.0
55.10	1019.0
56.10	4315.0
57.10	8365.0
57.90	427.0
59.00	610.0
60.10	2026.0
61.10	15889.0
62.00	12551.0
63.10	9934.0
64.00	1364.0
65.10	850.0
66.20	123.0
67.10	809.0
68.00	28952.0
69.10	29912.0
70.00	2370.0
71.90	1448.0
73.10	14679.0
74.10	51392.0
75.10	137728.0
76.00	10883.0
77.10	1719.0
78.00	1199.0
79.00	10780.0
79.90	3515.0
81.00	11818.0
82.00	2753.0
82.90	440.0
83.20	450.0
83.80	118.0
85.30	112.0
85.80	256.0
87.00	8858.0
88.10	8172.0
91.00	1563.0
92.00	8189.0
93.00	12414.0
94.00	31992.0
95.10	242944.0
96.10	16126.0
97.10	583.0
98.60	61.0
100.10	52.0
100.70	75.0
101.00	86.0
102.30	93.0
103.10	424.0
104.00	1552.0
105.10	358.0
105.70	886.0
107.10	351.0
107.90	170.0
108.80	63.0
110.40	379.0
111.10	483.0
112.00	258.0
112.90	451.0
114.30	67.0
114.80	330.0
116.00	980.0
117.00	2700.0
117.90	1695.0
119.00	1342.0
119.80	222.0
120.80	53.0
121.50	152.0
121.80	97.0
122.10	167.0
122.80	118.0
123.80	271.0

Instrument :
MSVOA_R
ClientSampleId :
BFB81

125.00	385.0
126.00	87.0
126.70	173.0
128.00	678.0
128.90	344.0
129.10	348.0
129.90	1181.0
130.90	515.0
131.80	176.0
133.00	903.0
134.00	704.0
134.90	590.0
136.00	218.0
137.00	509.0
138.40	109.0
139.00	268.0
140.90	2659.0
142.10	441.0
143.00	3542.0
144.00	294.0
145.10	329.0
146.00	210.0
147.00	156.0
148.00	435.0
149.00	387.0
149.70	252.0
149.90	275.0
150.90	201.0
151.60	114.0
152.20	257.0
153.00	183.0
153.60	120.0
154.10	91.0
154.90	706.0
155.70	111.0
156.40	146.0
157.00	542.0
158.00	211.0
158.70	209.0
159.00	206.0
160.90	472.0
161.90	102.0
162.80	155.0
163.80	86.0
164.10	101.0
164.80	383.0
165.40	252.0
166.40	53.0
167.00	95.0
167.90	148.0
168.60	141.0
169.60	100.0
170.10	95.0
171.00	184.0
172.00	1318.0
174.00	171200.0
175.00	14126.0
176.00	168064.0
177.00	12345.0
177.90	505.0
179.10	360.0
180.00	132.0
181.20	416.0
184.00	123.0
186.60	166.0
188.00	163.0
189.00	143.0
189.40	125.0
191.10	992.0
192.00	403.0
192.90	2076.0
194.10	341.0
194.60	61.0
195.10	258.0
197.30	86.0
198.70	56.0
200.90	65.0
201.80	89.0
203.00	196.0
203.60	92.0
204.10	98.0
205.10	269.0
206.20	52.0
207.00	675.0
208.20	144.0
210.40	103.0
212.80	88.0
215.50	60.0
218.80	92.0
220.40	53.0
223.20	93.0
224.70	203.0
229.00	65.0
229.80	55.0
232.50	76.0
235.20	87.0

Instrument :
MSVOA_R
ClientSampleId :
BFB81

235.70	76.0
236.30	79.0
236.70	131.0
237.70	100.0
239.50	125.0
240.30	88.0
241.00	135.0
241.60	75.0
246.60	146.0
247.20	111.0
248.10	72.0
248.80	452.0
249.10	452.0
250.40	106.0
250.80	107.0
252.20	122.0
255.90	52.0
257.50	71.0
264.20	141.0
264.90	799.0
266.00	246.0
266.90	180.0
267.20	139.0
268.30	59.0
272.80	212.0
273.90	50.0
274.60	141.0
275.30	68.0
276.60	51.0
280.00	54.0
281.00	6725.0
282.10	2162.0
283.00	1635.0
283.90	309.0
284.70	85.0
285.30	71.0
287.10	231.0
289.80	78.0
291.40	79.0

Instrument :
MSVOA_R
ClientSampleId :
BFB81