

Data Path : Z:\VOASRV\HPCHEM1\MSVOA Y\DATA\VY010421\
 Data File : VY003872.D
 Acq On : 04 Jan 2021 15:34
 Operator : SY/MD
 Sample : L4485-07
 Misc : 5.00G/10ML/MSVOA Y/SOIL
 ALS Vial : 9 Sample Multiplier: 1

Instrument :
 MSVOA_Y
 ClientSampleId :
 MDL-SOIL-07

Quant Time: Jan 05 04:10:34 2021
 Quant Method : Z:\VOASRV\HPCHEM1\MSVOA_Y\METHODS\SFAMYLM122920SMA.M
 Quant Title : VOC Analysis
 QLast Update : Tue Jan 05 04:09:14 2021
 Response via : Initial Calibration

Internal Standards	R.T.	QIon	Response	Conc	Units	Dev(Min)
1) 1,4-Difluorobenzene	8.69	114	304462	25.00	ug/L	0.00
28) Chlorobenzene-d5	11.49	117	290552	25.00	ug/L	0.00
58) 1,4-Dichlorobenzene-d4	13.42	152	160985	25.00	ug/L	0.00

System Monitoring Compounds

4) Vinyl Chloride-d3	2.25	65	142836	27.73	ug/L	0.00
Spiked Amount	25.000	Range	30 - 150	Recovery	=	110.92%
7) Chloroethane-d5	2.77	69	114430	28.08	ug/L	0.00
Spiked Amount	25.000	Range	30 - 150	Recovery	=	112.32%
11) 1,1-Dichloroethene-d2	3.86	63	193972	21.82	ug/L	0.00
Spiked Amount	25.000	Range	45 - 110	Recovery	=	87.28%
21) 2-Butanone-d5	6.89	46	108473	55.38	ug/L	0.00
Spiked Amount	50.000	Range	20 - 135	Recovery	=	110.76%
24) Chloroform-d	7.48	84	229302	27.27	ug/L	0.00
Spiked Amount	25.000	Range	40 - 150	Recovery	=	109.08%
26) 1,2-Dichloroethane-d4	8.15	65	151479	28.28	ug/L	0.00
Spiked Amount	25.000	Range	70 - 130	Recovery	=	113.12%
32) Benzene-d6	8.11	84	464941	28.78	ug/L	0.00
Spiked Amount	25.000	Range	20 - 135	Recovery	=	115.12%
36) 1,2-Dichloropropane-d6	9.12	67	137332	28.82	ug/L	0.00
Spiked Amount	25.000	Range	70 - 120	Recovery	=	115.28%
41) Toluene-d8	10.18	98	440791	28.82	ug/L	0.00
Spiked Amount	25.000	Range	30 - 130	Recovery	=	115.28%
43) trans-1,3-Dichloropropene-	10.43	79	76207	28.35	ug/L	0.00
Spiked Amount	25.000	Range	30 - 135	Recovery	=	113.40%
47) 2-Hexanone-d5	10.79	63	84669	57.30	ug/L	0.00
Spiked Amount	50.000	Range	20 - 135	Recovery	=	114.60%
56) 1,1,2,2-Tetrachloroethane-	12.56	84	132157	28.21	ug/L	0.00
Spiked Amount	25.000	Range	45 - 120	Recovery	=	112.84%
66) 1,2-Dichlorobenzene-d4	13.72	152	175002	29.75	ug/L	0.00
Spiked Amount	25.000	Range	75 - 120	Recovery	=	119.00%

Target Compounds

Target Compounds	R.T.	QIon	Response	Conc	Units	Ovalue
2) Dichlorodifluoromethane	1.91	85	5628	1.103	ug/L	91
3) Chloromethane	2.12	50	7256	1.270	ug/L	93
5) Vinyl chloride	2.25	62	6727	1.110	ug/L #	37
6) Bromomethane	2.66	94	3931	1.061	ug/L	87
9) Trichlorofluoromethane	3.13	101	8926	1.102	ug/L	99
12) 1,1-Dichloroethene	3.88	96	3865	0.968	ug/L #	1
13) Acetone	3.96	43	3001	2.054	ug/L	92
14) Carbon disulfide	4.20	76	11871	0.884	ug/L #	91
16) Methylene chloride	4.73	84	12289	2.517	ug/L	93
17) trans-1,2-Dichloroethene	5.23	96	4152	0.951	ug/L	81
18) Methyl tert-butyl Ether	5.22	73	12317	0.955	ug/L #	74
19) 1,1-Dichloroethane	6.02	63	5036	0.638	ug/L #	81
20) cis-1,2-Dichloroethene	7.00	96	3254	0.689	ug/L	79
22) 2-Butanone	7.00	43	5856	2.586	ug/L #	69
27) 1,2-Dichloroethane	8.24	62	7028	1.093	ug/L #	91
29) Cyclohexane	7.79	56	6735	0.885	ug/L	96
30) 1,1,1-Trichloroethane	7.71	97	7439	0.951	ug/L	90

Data Path : Z:\VOASRV\HPCHEM1\MSVOA Y\DATA\VY010421\
 Data File : VY003872.D
 Acq On : 04 Jan 2021 15:34
 Operator : SY/MD
 Sample : L4485-07
 Misc : 5.00G/10ML/MSVOA Y/SOIL
 ALS Vial : 9 Sample Multiplier: 1

Instrument :
 MSVOA_Y
 ClientSampleId :
 MDL-SOIL-07

Quant Time: Jan 05 04:10:34 2021
 Quant Method : Z:\VOASRV\HPCHEM1\MSVOA_Y\METHODS\SFAMYL122920SMA.M
 Quant Title : VOC Analysis
 QLast Update : Tue Jan 05 04:09:14 2021
 Response via : Initial Calibration

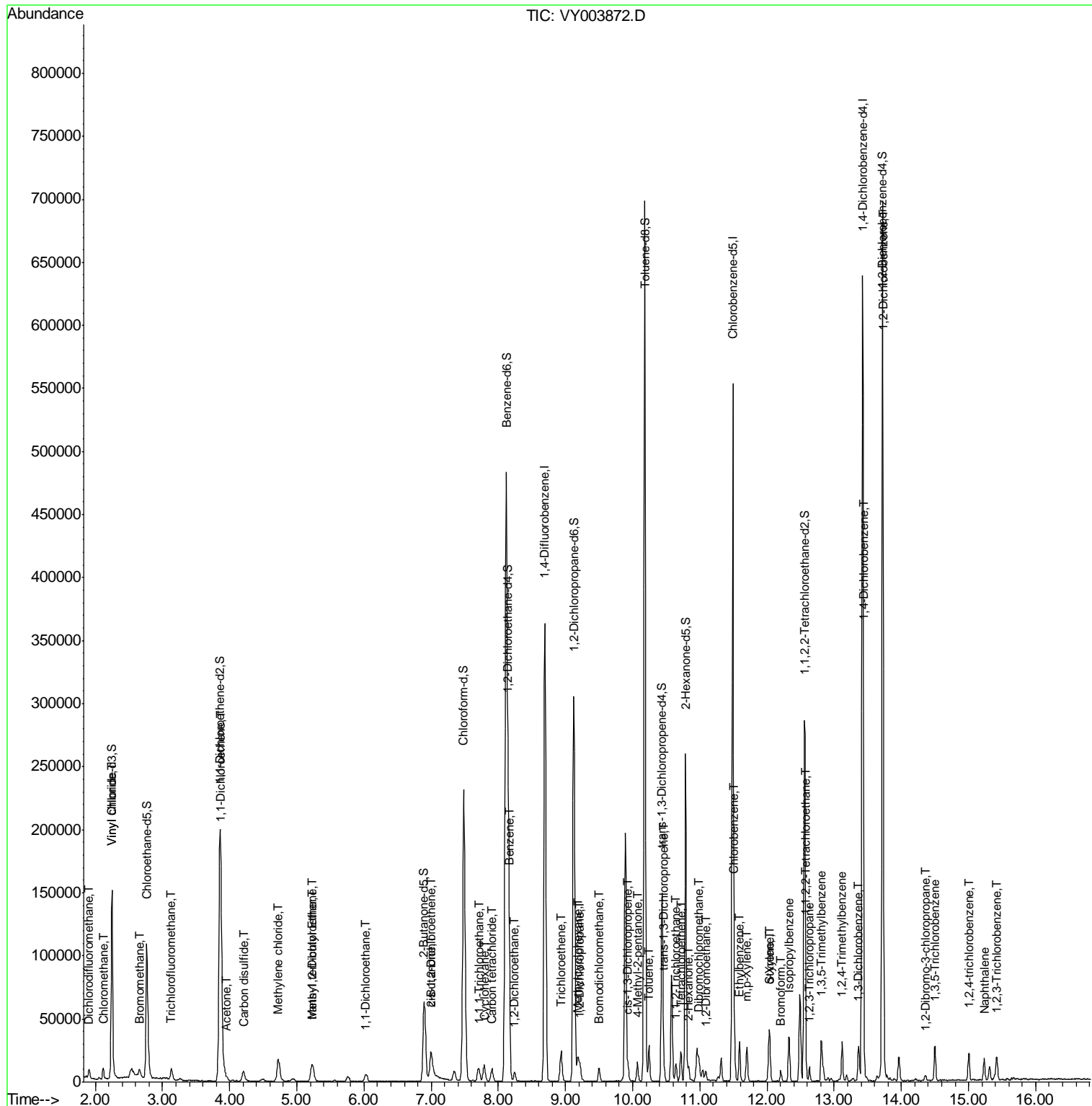
Internal Standards	R.T.	QIon	Response	Conc	Units	Dev(Min)
31) Carbon tetrachloride	7.90	117	7654	1.058	ug/L	98
33) Benzene	8.17	78	18597	1.047	ug/L	100
34) Trichloroethene	8.94	95	4704	0.958	ug/L	94
35) Methylcyclohexane	9.19	83	6873	0.860	ug/L	91
37) 1,2-Dichloropropane	9.21	63	4601	1.018	ug/L #	92
38) Bromodichloromethane	9.50	83	6670	1.047	ug/L #	93
39) cis-1,3-Dichloropropene	9.93	75	7342	0.950	ug/L	97
40) 4-Methyl-2-pentanone	10.07	43	9448	1.957	ug/L	97
42) Toluene	10.24	91	19948	1.015	ug/L	96
44) trans-1,3-Dichloropropene	10.46	75	10835	1.453	ug/L	100
45) 1,1,2-Trichloroethane	10.64	97	3805	0.980	ug/L	96
46) Tetrachloroethene	10.72	164	4323	1.018	ug/L	97
48) 2-Hexanone	10.83	43	6876	1.955	ug/L	96
49) Dibromochloromethane	10.98	129	4951	1.007	ug/L	96
50) 1,2-Dibromoethane	11.09	107	4084	1.065	ug/L #	98
51) Chlorobenzene	11.51	112	12567	0.989	ug/L	98
52) Ethylbenzene	11.59	91	21105	0.959	ug/L	94
53) m,p-Xylene	11.70	106	8078	0.968	ug/L	96
54) o-Xylene	12.03	106	7751	0.954	ug/L	96
55) Styrene	12.04	104	12723	0.905	ug/L	93
57) 1,1,2,2-Tetrachloroethane	12.58	83	5759	1.253	ug/L #	94
59) Bromoform	12.21	173	3451	0.993	ug/L #	88
60) Isopropylbenzene	12.33	105	19879	0.934	ug/L	98
61) 1,2,3-Trichloropropane	12.63	75	4567	1.155	ug/L	95
62) 1,3,5-Trimethylbenzene	12.81	105	16113	0.912	ug/L	94
63) 1,2,4-Trimethylbenzene	13.12	105	16901	0.944	ug/L	100
64) 1,3-Dichlorobenzene	13.36	146	10486	1.017	ug/L	97
65) 1,4-Dichlorobenzene	13.44	146	11349	1.087	ug/L	96
67) 1,2-Dichlorobenzene	13.73	146	9924	1.028	ug/L #	90
68) 1,2-Dibromo-3-chloropropan	14.35	75	1316	1.339	ug/L #	82
69) 1,3,5-Trichlorobenzene	14.50	180	8591	1.069	ug/L	100
70) 1,2,4-trichlorobenzene	15.01	180	6930	1.017	ug/L	99
71) Naphthalene	15.23	128	13816	0.971	ug/L	96
72) 1,2,3-Trichlorobenzene	15.42	180	6383	1.060	ug/L	99

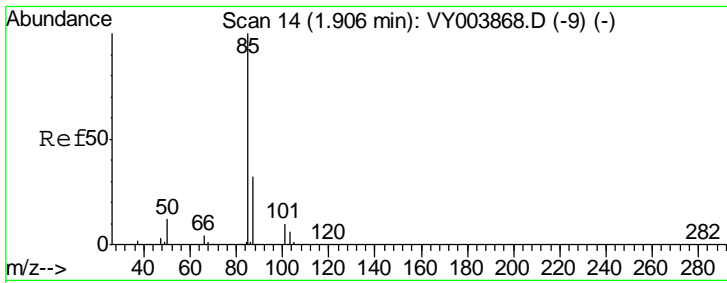
(#) = qualifier out of range (m) = manual integration (+) = signals summed

Data Path : Z:\VOASRV\HPCHEM1\MSVOA Y\DATA\VY010421\
 Data File : VY003872.D
 Acq On : 04 Jan 2021 15:34
 Operator : SY/MD
 Sample : L4485-07
 Misc : 5.00G/10ML/MSVOA Y/SOIL
 ALS Vial : 9 Sample Multiplier: 1

Instrument :
 MSVOA_Y
 Client Sampled :
 MDL-SOIL-07

Quant Time: Jan 05 04:10:34 2021
 Quant Method : Z:\VOASRV\HPCHEM1\MSVOA_Y\METHODS\SFAMYL122920SMA.M
 Quant Title : VOC Analysis
 QLast Update : Tue Jan 05 04:09:14 2021
 Response via : Initial Calibration

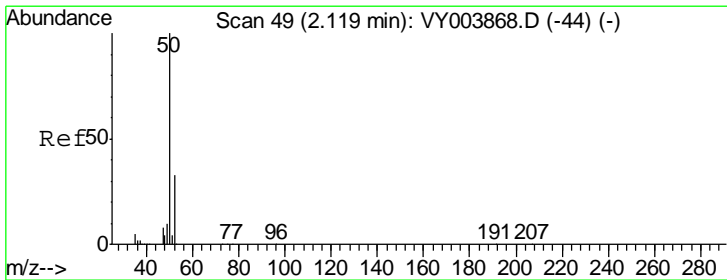
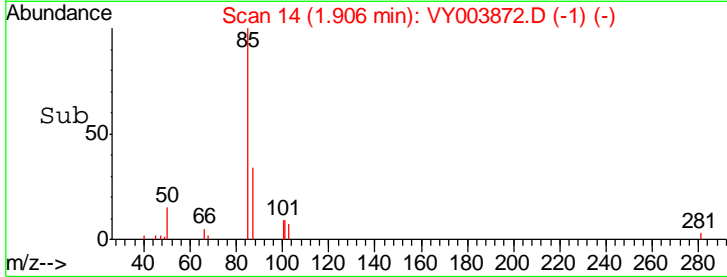
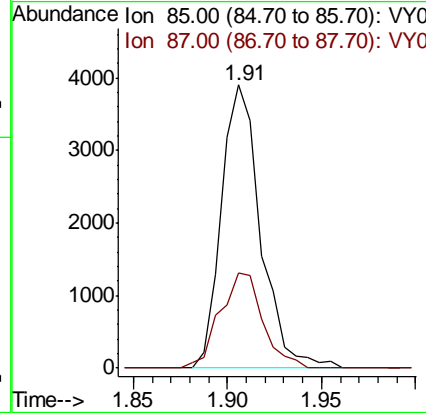
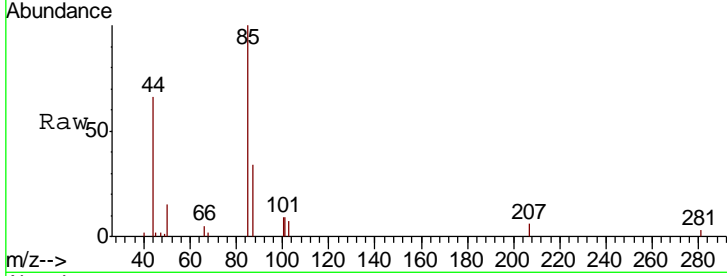




#2
 Dichlorodifluoromethane
 Concen: 1.103 ug/L
 RT: 1.91 min Scan# 14
 Delta R.T. 0.00 min
 Lab File: VY003872.D
 Acq: 04 Jan 2021 15:34

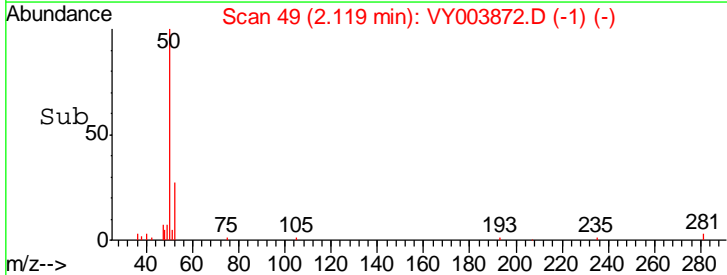
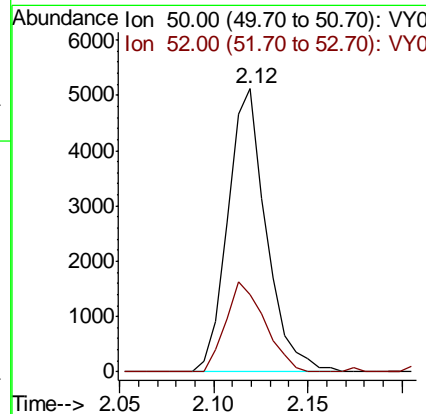
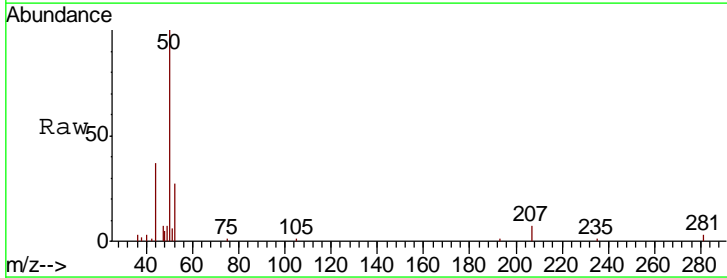
Instrument :
 MSVOA_Y
ClientSampled :
 MDL-SOIL-07

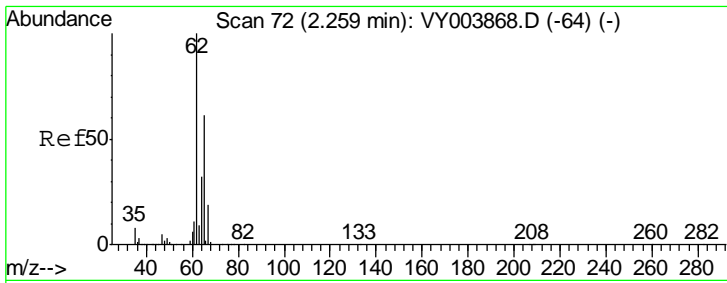
Tgt Ion: 85 Resp: 5628
 Ion Ratio Lower Upper
 85 100
 87 37.0 25.4 38.2



#3
 Chloromethane
 Concen: 1.270 ug/L
 RT: 2.12 min Scan# 49
 Delta R.T. 0.00 min
 Lab File: VY003872.D
 Acq: 04 Jan 2021 15:34

Tgt Ion: 50 Resp: 7256
 Ion Ratio Lower Upper
 50 100
 52 27.4 22.0 41.0

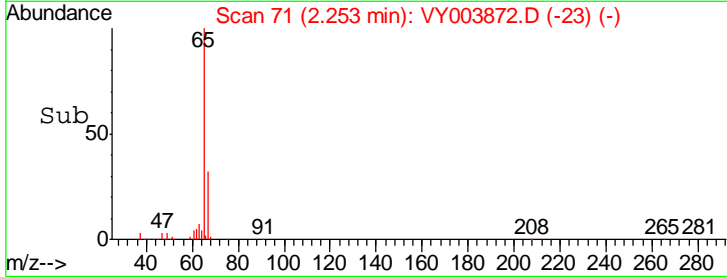
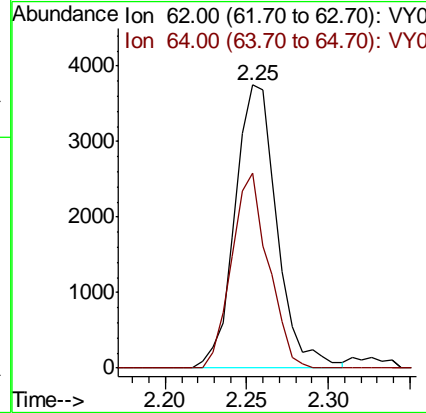
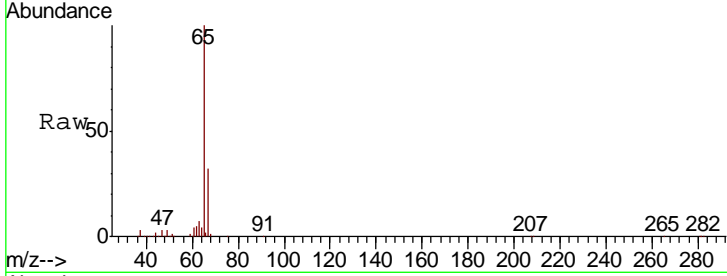




#5
 Vinyl chloride
 Concen: 1.110 ug/L
 RT: 2.25 min Scan# 71
 Delta R.T. -0.01 min
 Lab File: VY003872.D
 Acq: 04 Jan 2021 15:34

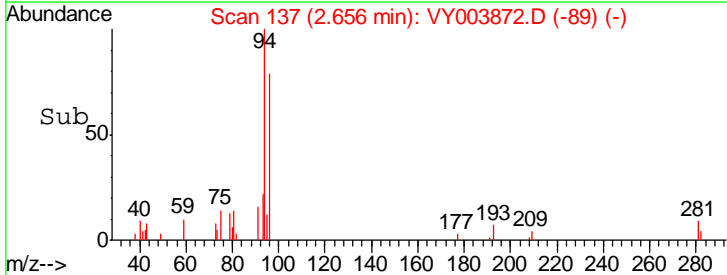
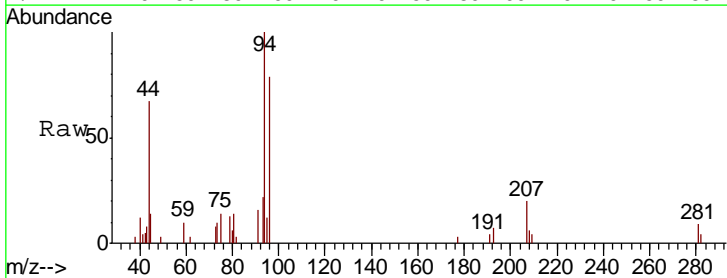
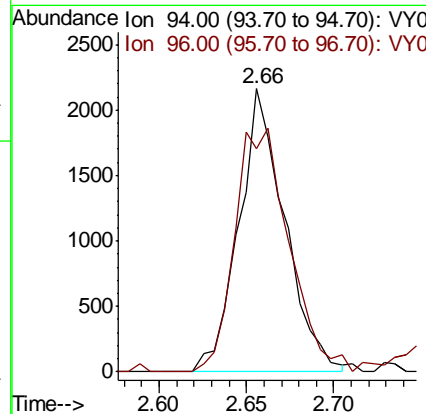
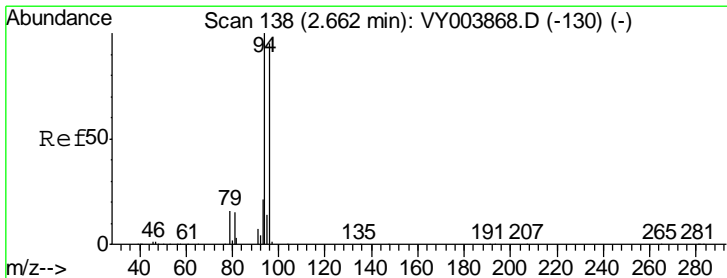
Instrument :
 MSVOA_Y
ClientSampled :
 MDL-SOIL-07

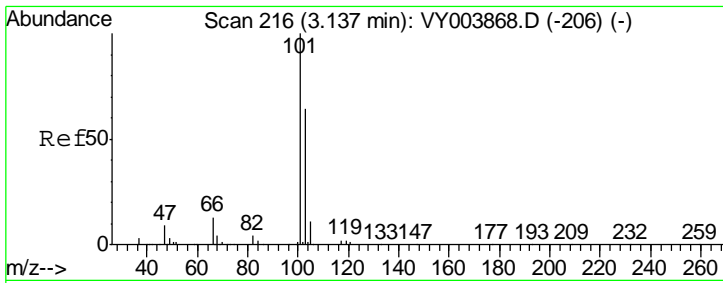
Tgt Ion	Resp	Lower	Upper
62	100		
64	68.7	23.2	43.2#



#6
 Bromomethane
 Concen: 1.061 ug/L
 RT: 2.66 min Scan# 137
 Delta R.T. -0.01 min
 Lab File: VY003872.D
 Acq: 04 Jan 2021 15:34

Tgt Ion	Resp	Lower	Upper
94	100		
96	79.0	64.3	119.3

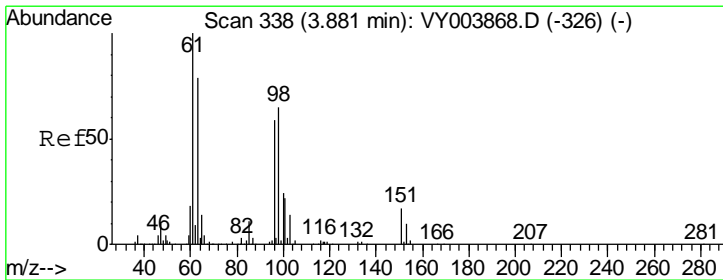
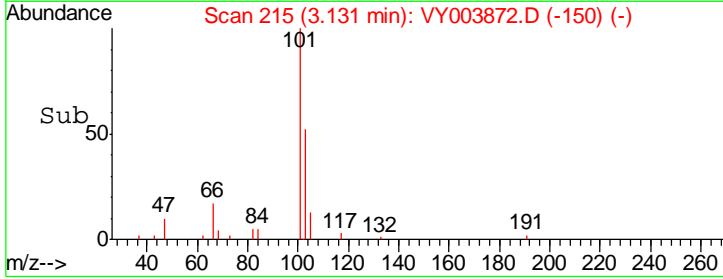
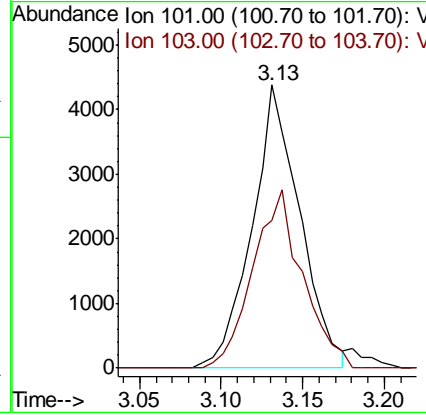
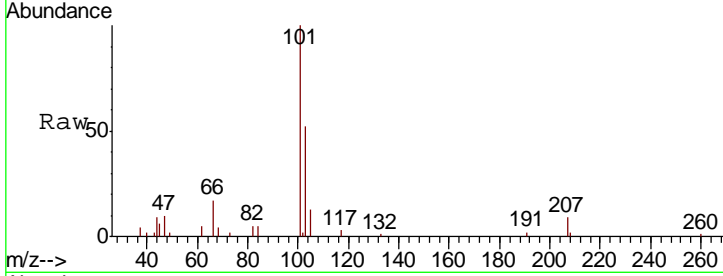




#9
 Trichlorofluoromethane
 Concen: 1.102 ug/L
 RT: 3.13 min Scan# 215
 Delta R.T. -0.01 min
 Lab File: VY003872.D
 Acq: 04 Jan 2021 15:34

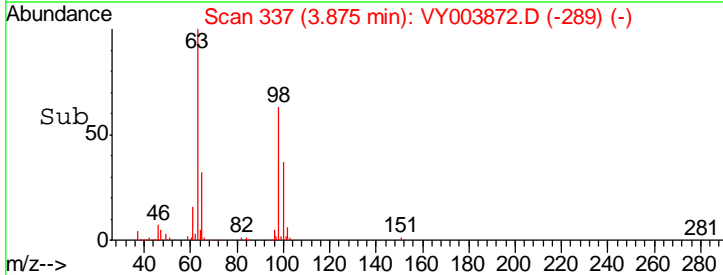
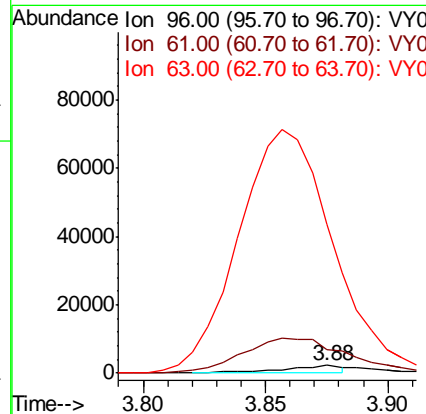
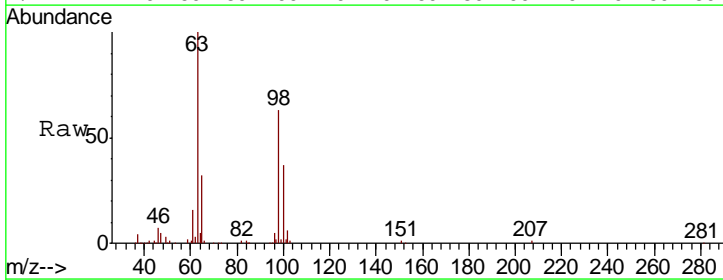
Instrument :
 MSVOA_Y
 ClientSampleId :
 MDL-SOIL-07

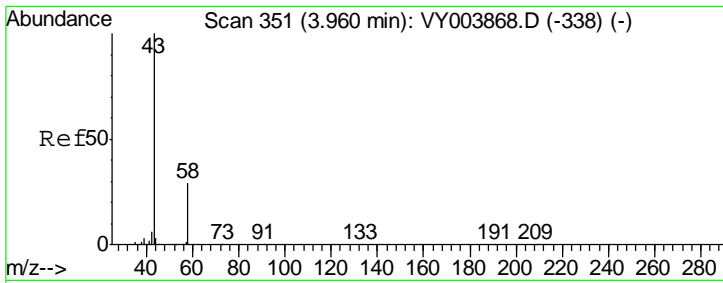
Tgt Ion	Resp	Lower	Upper
101	8926		
103	65.3	51.4	77.0



#12
 1,1-Dichloroethene
 Concen: 0.968 ug/L
 RT: 3.88 min Scan# 337
 Delta R.T. -0.01 min
 Lab File: VY003872.D
 Acq: 04 Jan 2021 15:34

Tgt Ion	Resp	Lower	Upper
96	3865		
96	100		
61	303.0	123.8	230.0#
63	1928.8	85.3	158.3#

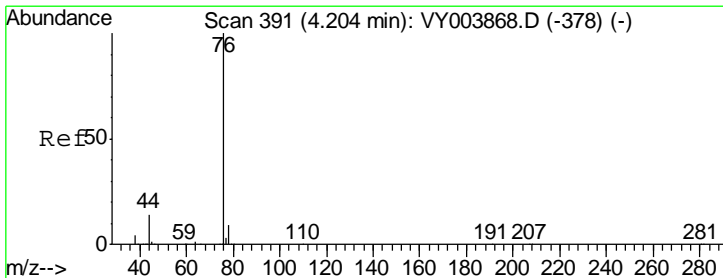
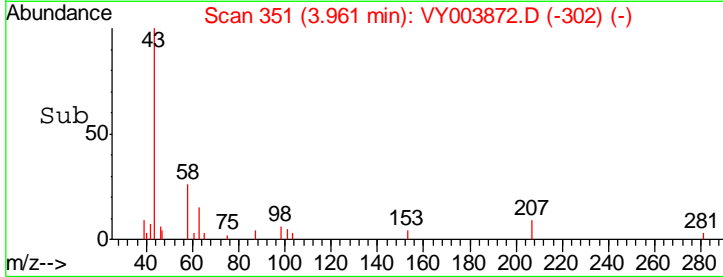
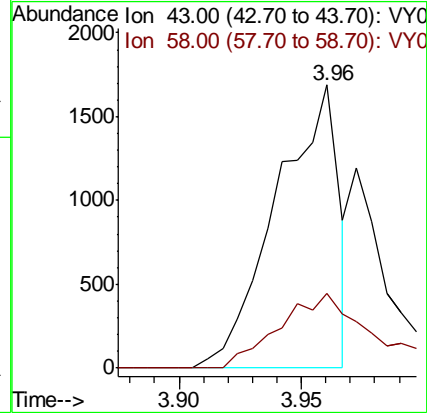
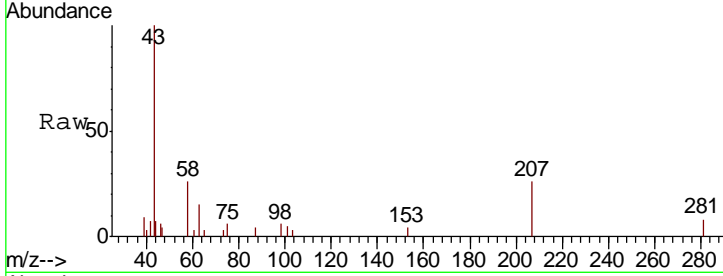




#13
 Acetone
 Concen: 2.054 ug/L
 RT: 3.96 min Scan# 351
 Delta R.T. 0.00 min
 Lab File: VY003872.D
 Acq: 04 Jan 2021 15:34

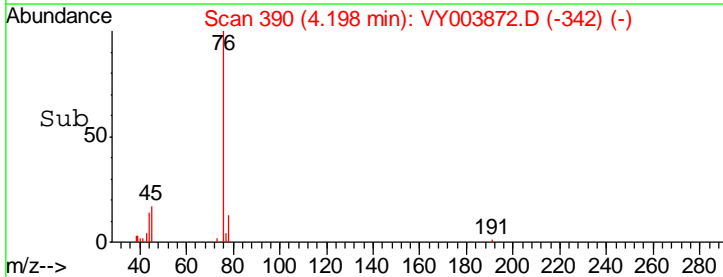
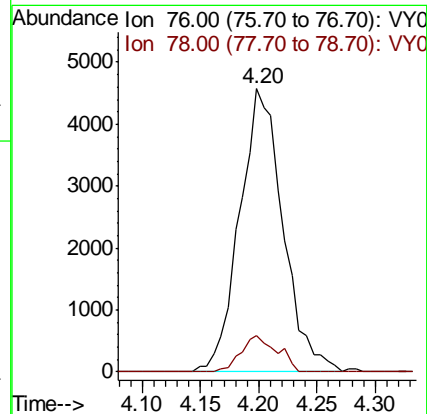
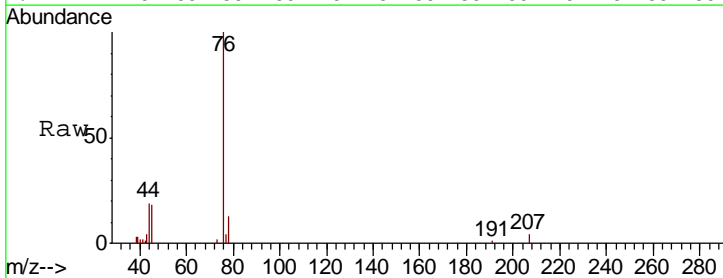
Instrument :
 MSVOA_Y
 ClientSampled :
 MDL-SOIL-07

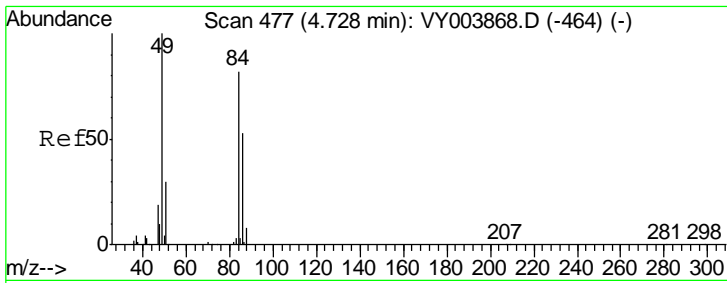
Tgt Ion	Ratio	Lower	Upper
43	100		
58	33.7	0.0	58.4



#14
 Carbon disulfide
 Concen: 0.884 ug/L
 RT: 4.20 min Scan# 390
 Delta R.T. -0.01 min
 Lab File: VY003872.D
 Acq: 04 Jan 2021 15:34

Tgt Ion	Ratio	Lower	Upper
76	100		
78	12.6	7.4	11.2#

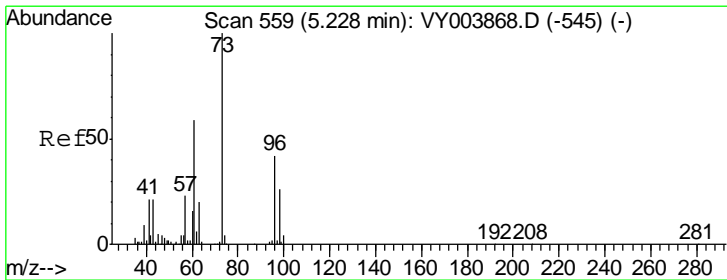
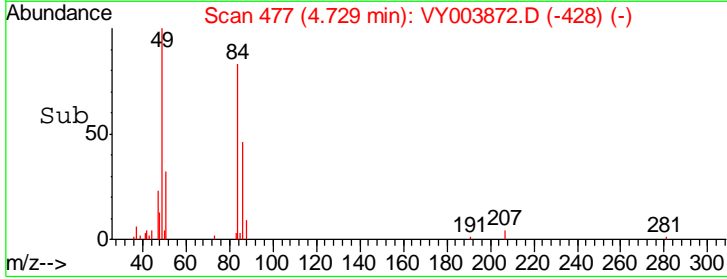
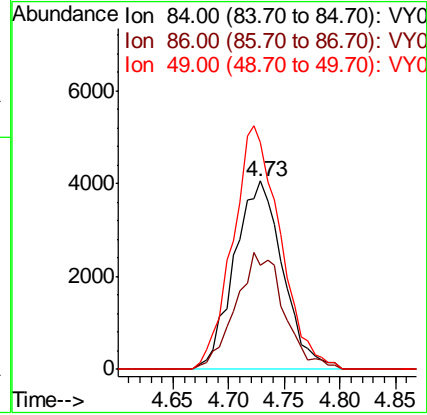
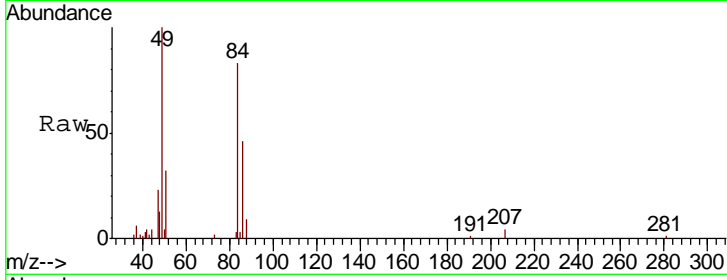




#16
 Methylene chloride
 Concen: 2.517 ug/L
 RT: 4.73 min Scan# 477
 Delta R.T. 0.00 min
 Lab File: VY003872.D
 Acq: 04 Jan 2021 15:34

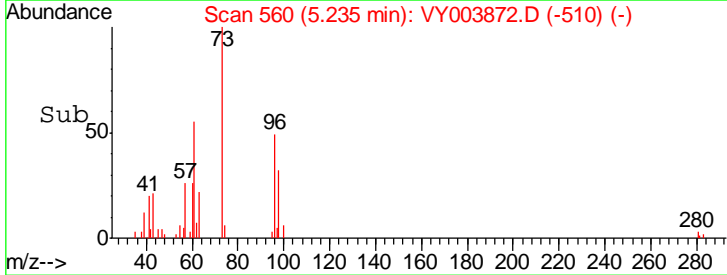
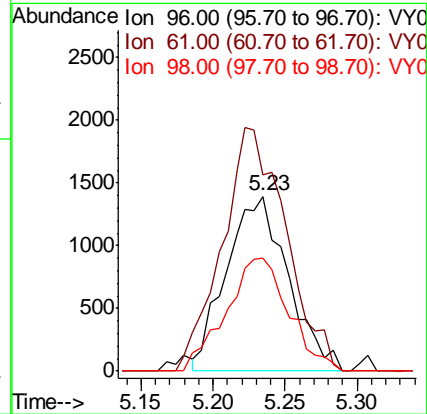
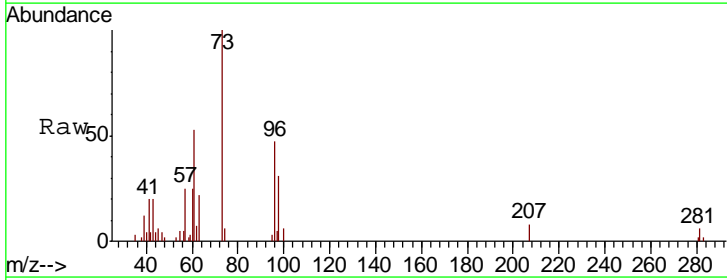
Instrument :
 MSVOA_Y
ClientSampled :
 MDL-SOIL-07

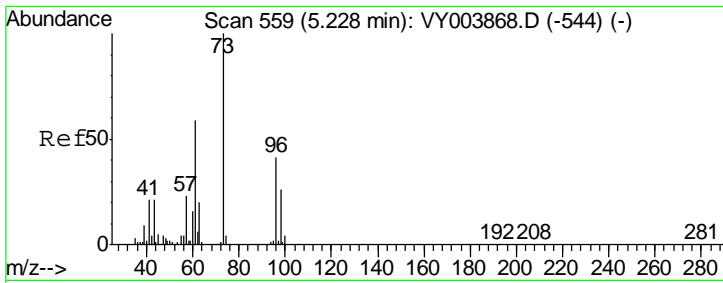
Tgt Ion	Resp	Lower	Upper
84	100		
86	55.3	42.1	78.3
49	120.5	90.3	167.7



#17
 trans-1,2-Dichloroethene
 Concen: 0.951 ug/L
 RT: 5.23 min Scan# 560
 Delta R.T. 0.01 min
 Lab File: VY003872.D
 Acq: 04 Jan 2021 15:34

Tgt Ion	Resp	Lower	Upper
96	100		
61	112.4	101.7	188.9
98	65.0	44.3	82.3

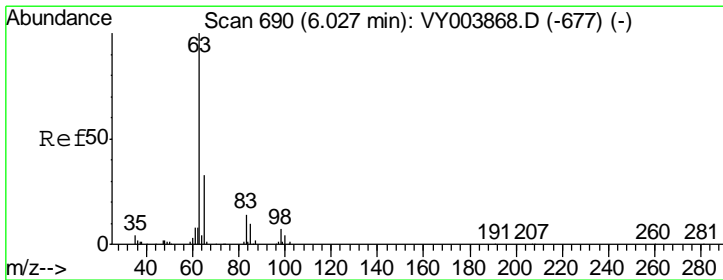
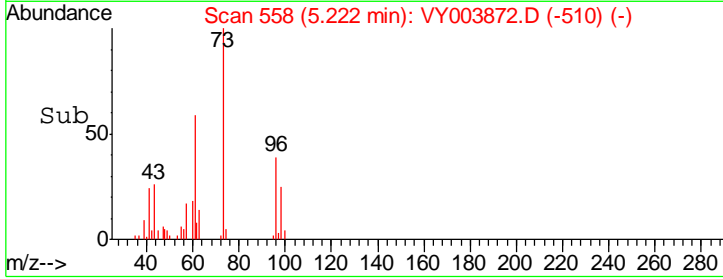
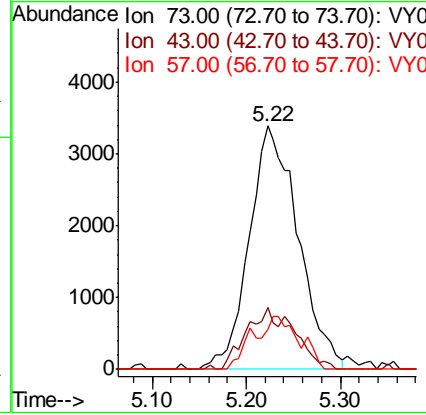
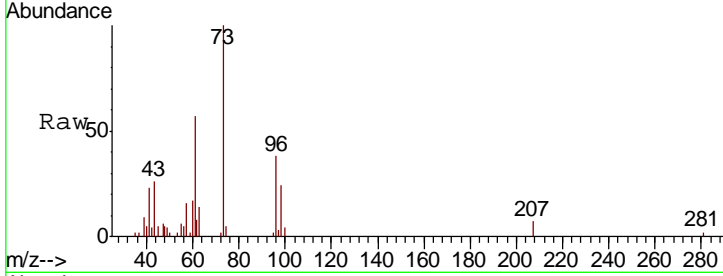




#18
 Methyl tert-butyl Ether
 Concen: 0.955 ug/L
 RT: 5.22 min Scan# 558
 Delta R.T. -0.01 min
 Lab File: VY003872.D
 Acq: 04 Jan 2021 15:34

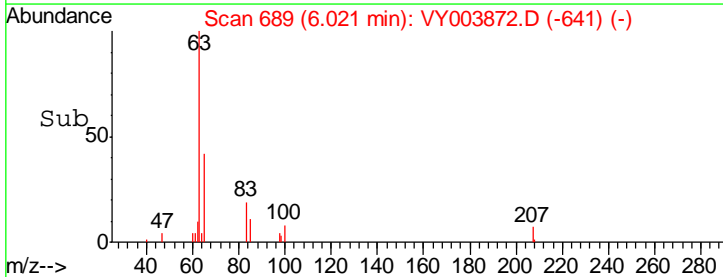
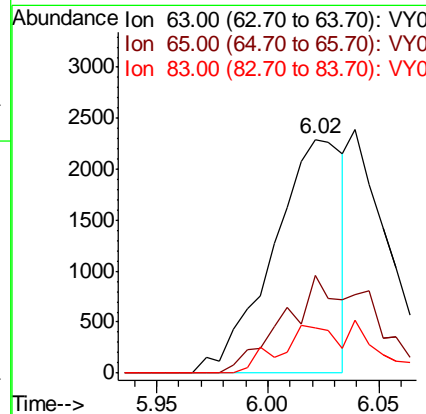
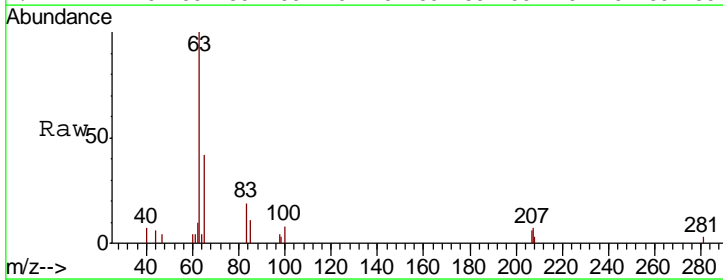
Instrument :
 MSVOA_Y
ClientSampled :
 MDL-SOIL-07

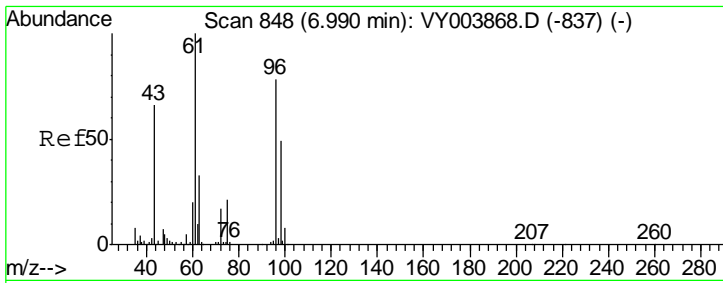
Tgt Ion	Resp	Lower	Upper
73	12317		
43	8.2	18.4	27.6#
57	11.8	17.6	26.4#



#19
 1,1-Dichloroethane
 Concen: 0.638 ug/L
 RT: 6.02 min Scan# 689
 Delta R.T. -0.01 min
 Lab File: VY003872.D
 Acq: 04 Jan 2021 15:34

Tgt Ion	Resp	Lower	Upper
63	5036		
65	41.9	21.9	40.7#
83	19.2	8.7	16.1#

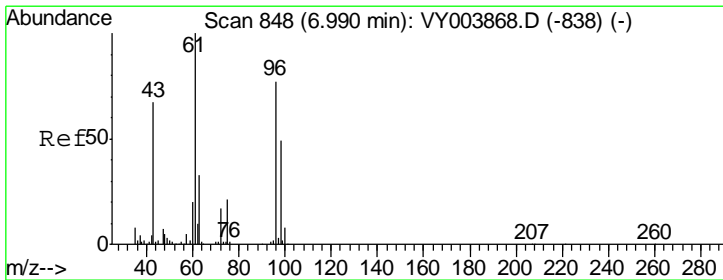
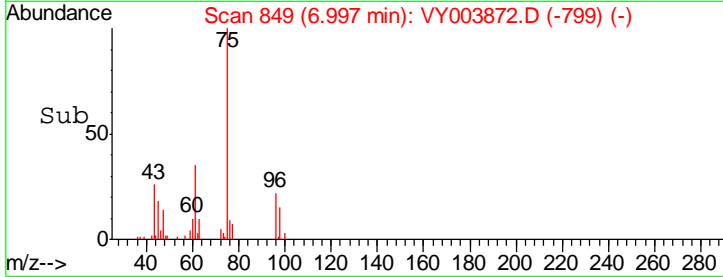
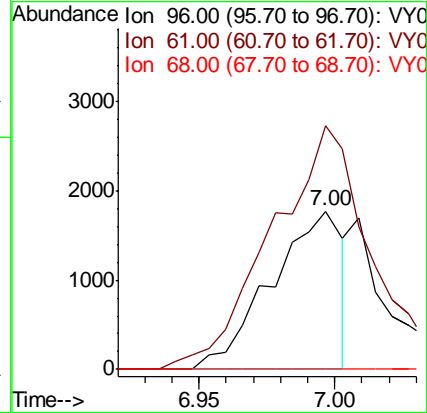
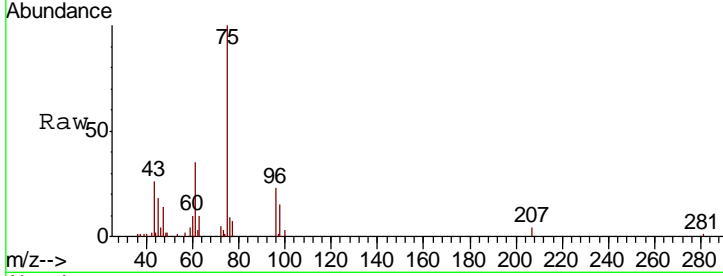




#20
 cis-1,2-Dichloroethene
 Concen: 0.689 ug/L
 RT: 7.00 min Scan# 849
 Delta R.T. 0.01 min
 Lab File: VY003872.D
 Acq: 04 Jan 2021 15:34

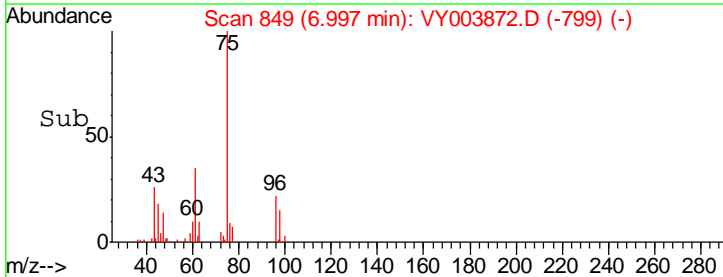
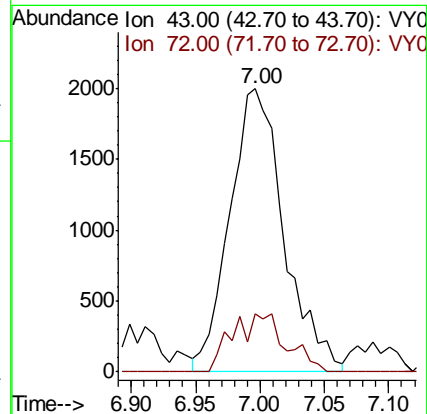
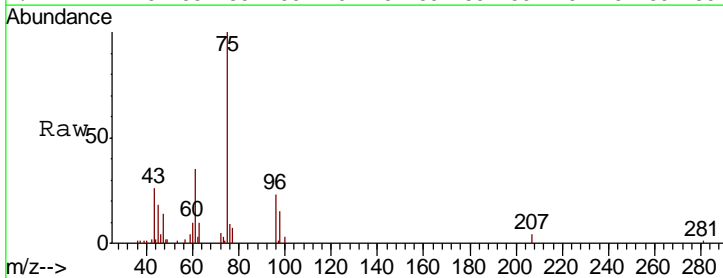
Instrument :
 MSVOA_Y
 ClientSampled :
 MDL-SOIL-07

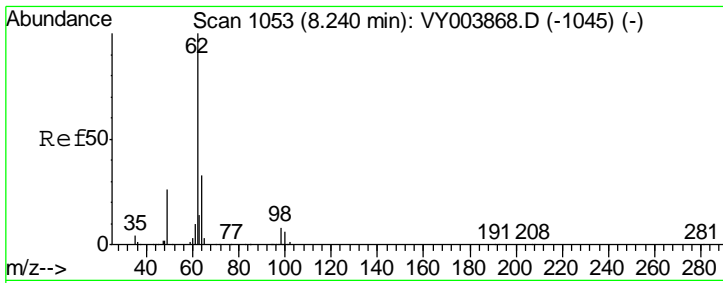
Tgt Ion	Resp	Lower	Upper
96	3254		
96	100		
61	153.8	90.6	168.3
68	0.0	0.0	0.0



#22
 2-Butanone
 Concen: 2.586 ug/L
 RT: 7.00 min Scan# 849
 Delta R.T. 0.01 min
 Lab File: VY003872.D
 Acq: 04 Jan 2021 15:34

Tgt Ion	Resp	Lower	Upper
43	5856		
43	100		
72	9.6	12.6	37.8#

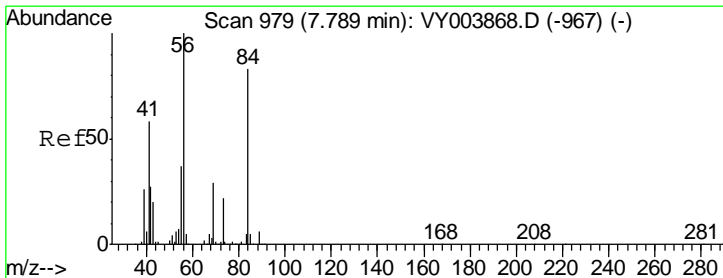
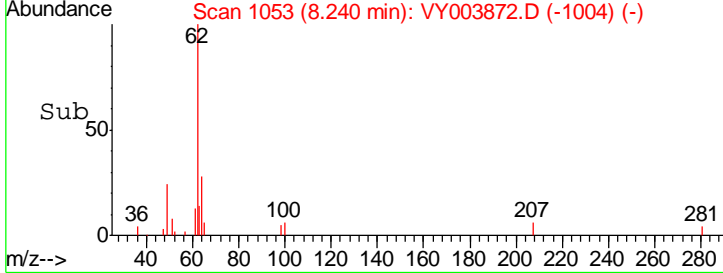
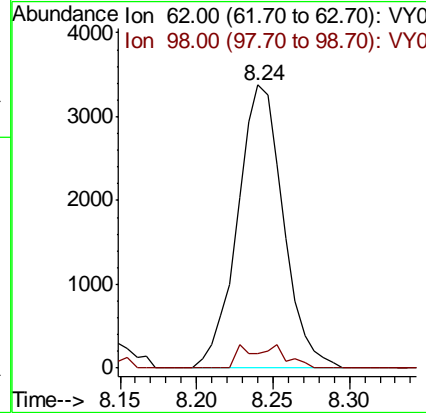
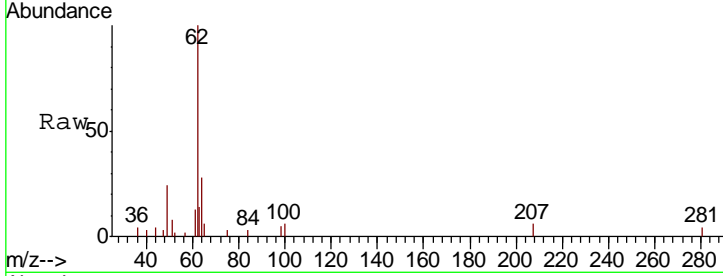




#27
 1,2-Dichloroethane
 Concen: 1.093 ug/L
 RT: 8.24 min Scan# 1053
 Delta R.T. 0.00 min
 Lab File: VY003872.D
 Acq: 04 Jan 2021 15:34

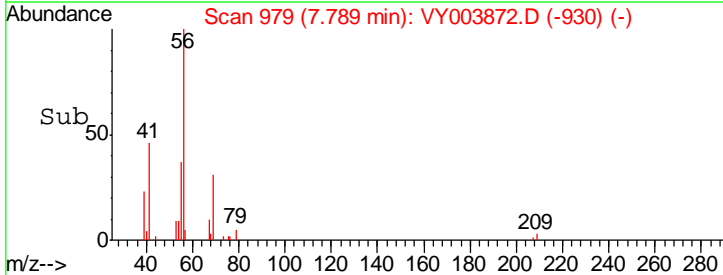
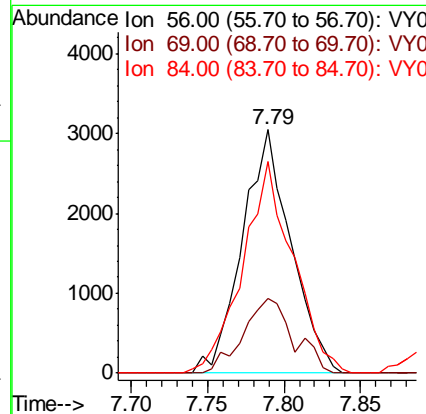
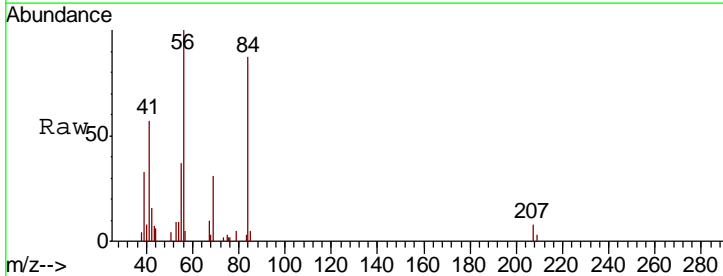
Instrument :
 MSVOA_Y
 ClientSampled :
 MDL-SOIL-07

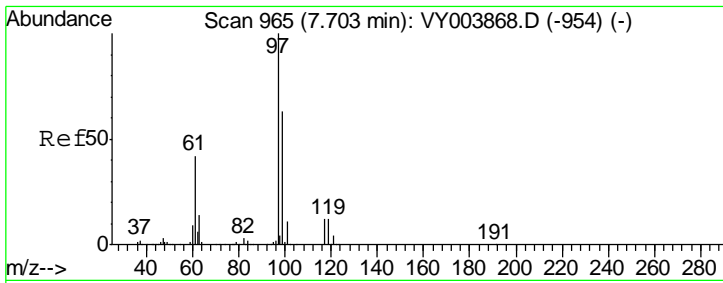
Tgt Ion	Resp	Lower	Upper
62	100		
98	5.1	6.8	10.2#



#29
 Cyclohexane
 Concen: 0.885 ug/L
 RT: 7.79 min Scan# 979
 Delta R.T. 0.00 min
 Lab File: VY003872.D
 Acq: 04 Jan 2021 15:34

Tgt Ion	Resp	Lower	Upper
56	100		
69	27.5	24.2	36.2
84	89.5	68.7	103.1

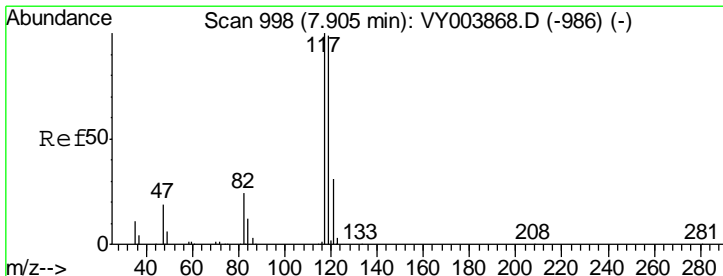
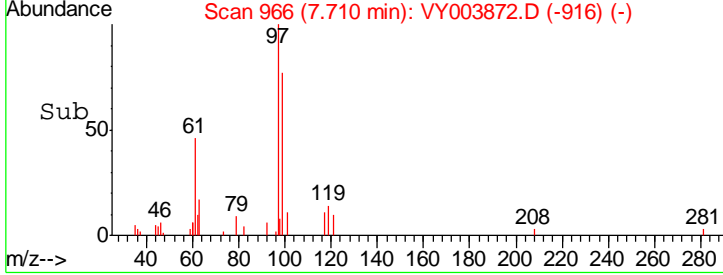
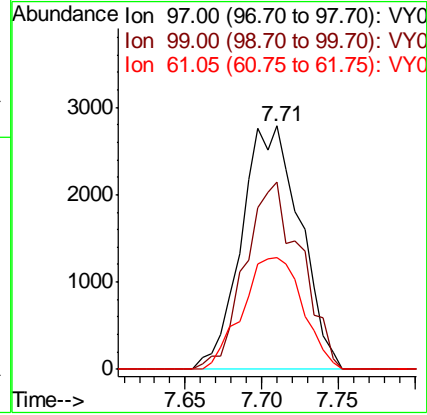
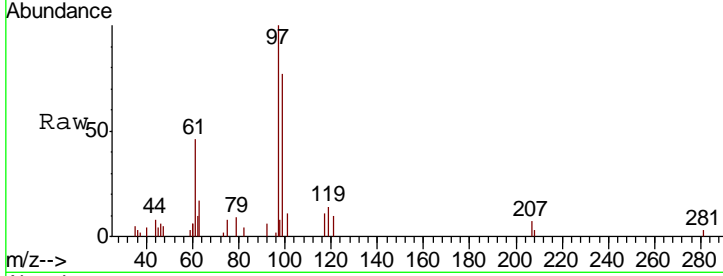




#30
 1,1,1-Trichloroethane
 Concen: 0.951 ug/L
 RT: 7.71 min Scan# 966
 Delta R.T. 0.01 min
 Lab File: VY003872.D
 Acq: 04 Jan 2021 15:34

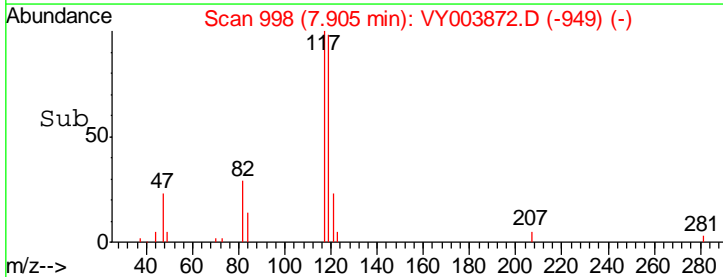
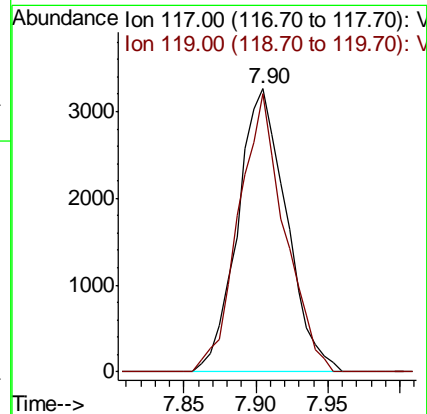
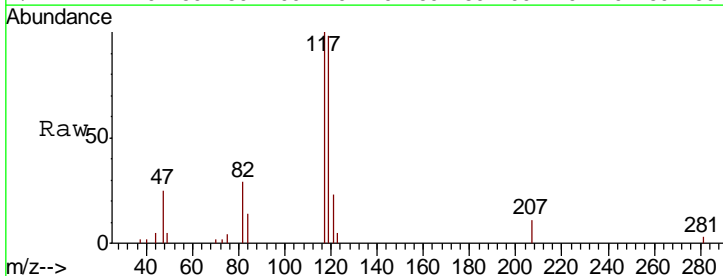
Instrument :
 MSVOA_Y
ClientSampled :
 MDL-SOIL-07

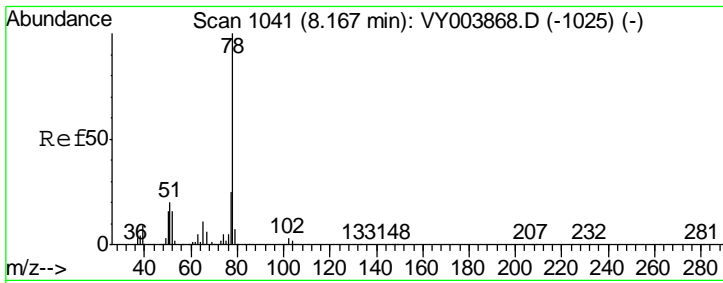
Tgt Ion	Resp	Lower	Upper
97	100		
99	52.4	50.5	75.7
61	47.0	35.5	53.3



#31
 Carbon tetrachloride
 Concen: 1.058 ug/L
 RT: 7.90 min Scan# 998
 Delta R.T. 0.00 min
 Lab File: VY003872.D
 Acq: 04 Jan 2021 15:34

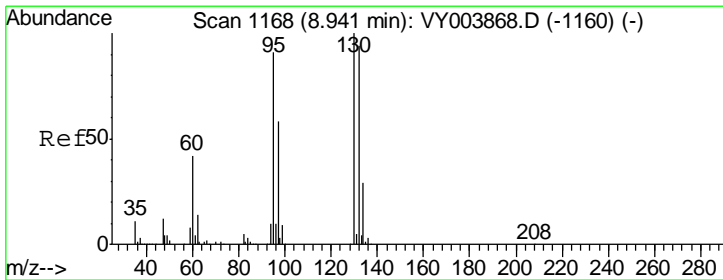
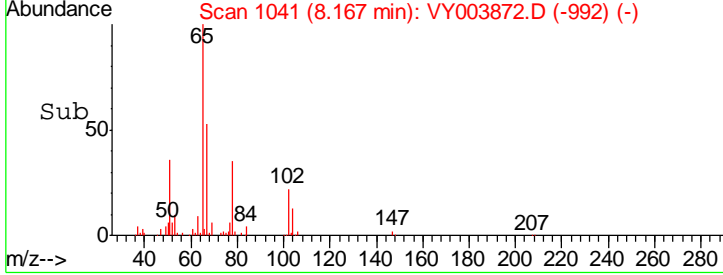
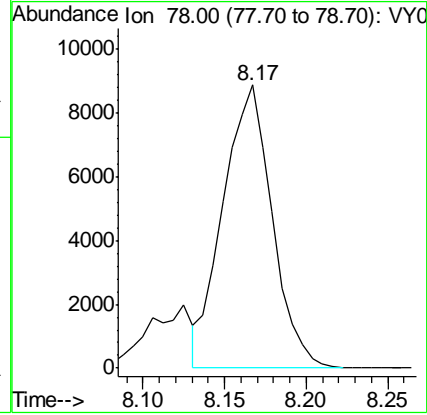
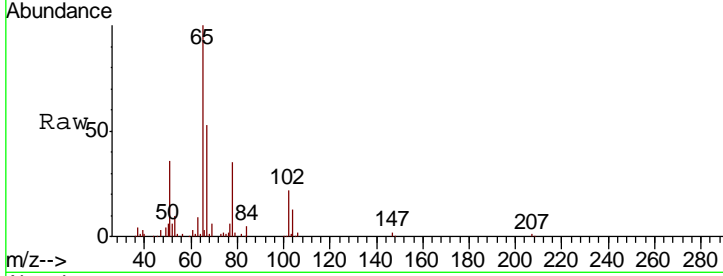
Tgt Ion	Resp	Lower	Upper
117	100		
119	92.9	76.2	114.4





#33
 Benzene
 Concen: 1.047 ug/L
 RT: 8.17 min Scan# 1041
 Delta R.T. 0.00 min
 Lab File: VY003872.D
 Acq: 04 Jan 2021 15:34
 Tgt Ion: 78 Resp: 18597

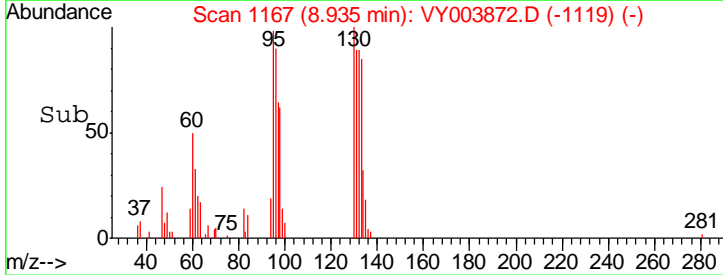
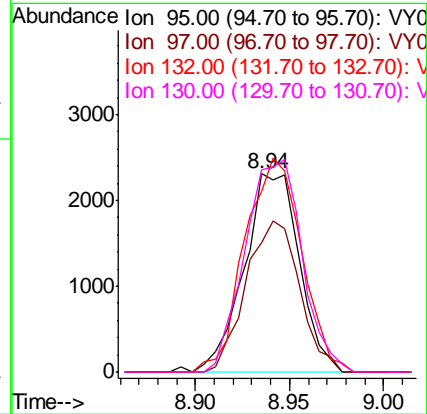
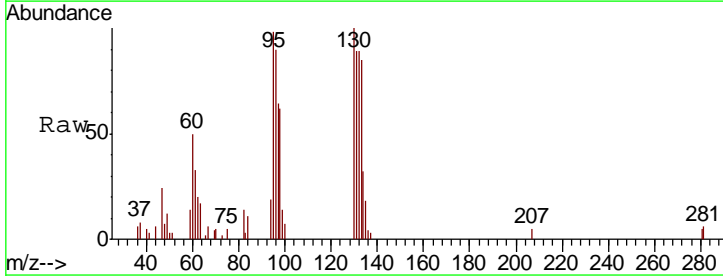
Instrument : MSVOA_Y
 ClientSampleId : MDL-SOIL-07

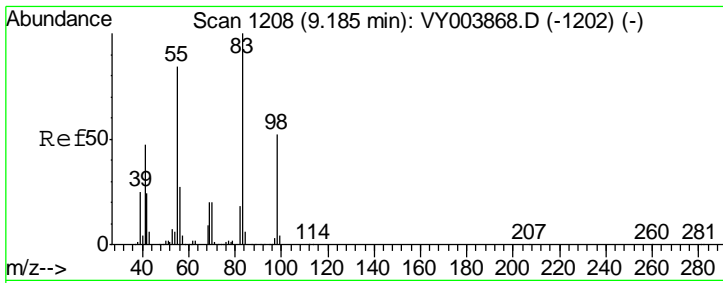


#34
 Trichloroethene
 Concen: 0.958 ug/L
 RT: 8.94 min Scan# 1167
 Delta R.T. -0.01 min
 Lab File: VY003872.D
 Acq: 04 Jan 2021 15:34

Tgt Ion: 95 Resp: 4704

Ion	Ratio	Lower	Upper
95	100		
97	65.2	44.4	82.5
132	91.0	71.8	133.4
130	102.3	74.4	138.2

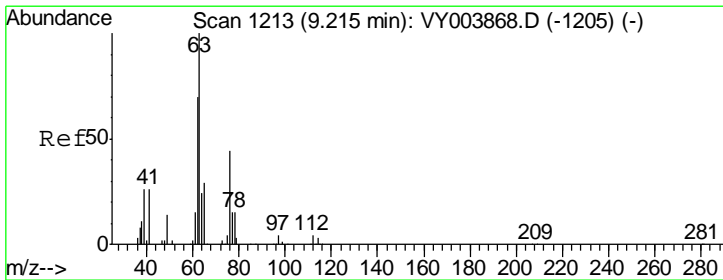
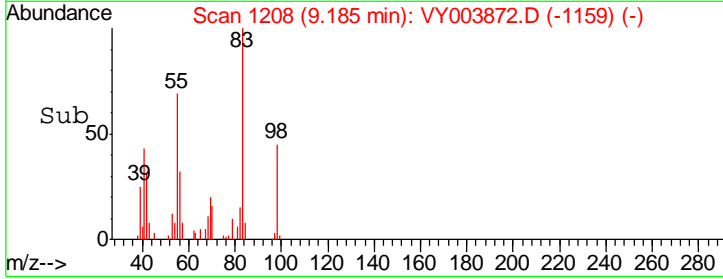
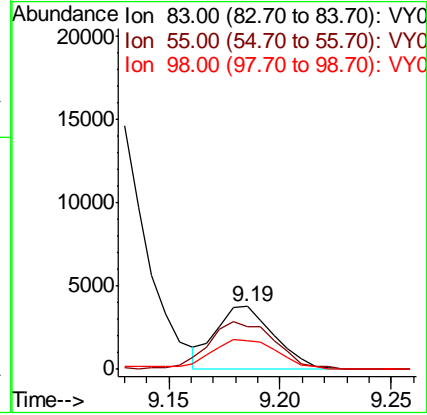
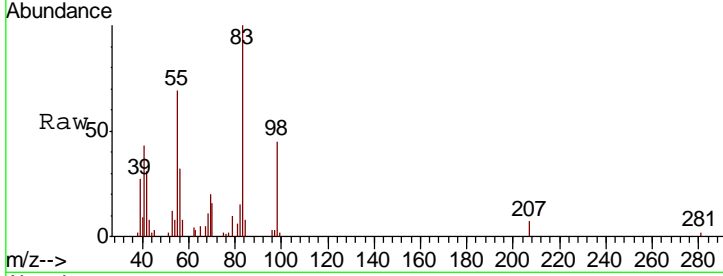




#35
 Methylcyclohexane
 Concen: 0.860 ug/L
 RT: 9.19 min Scan# 1208
 Delta R.T. 0.00 min
 Lab File: VY003872.D
 Acq: 04 Jan 2021 15:34

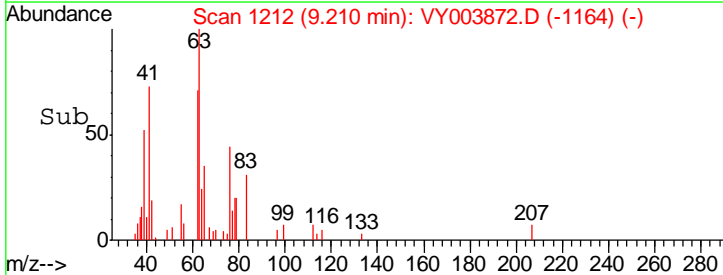
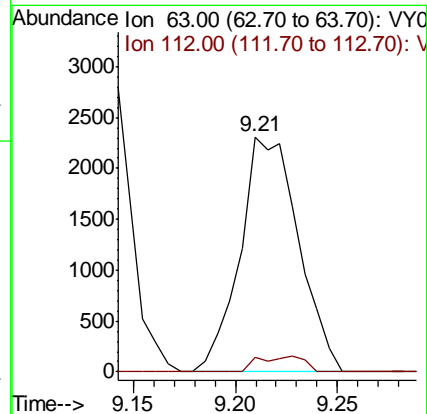
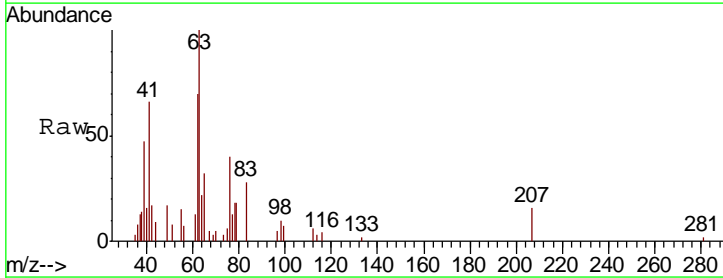
Instrument :
 MSVOA_Y
 ClientSampled :
 MDL-SOIL-07

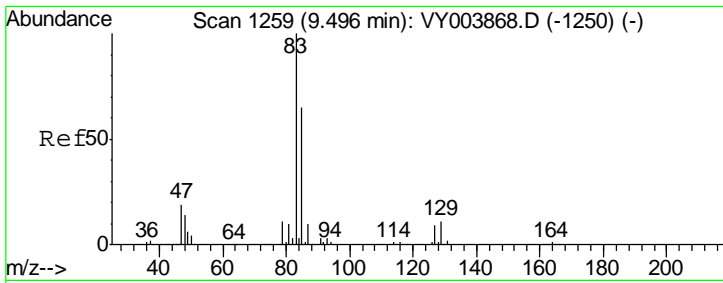
Tgt Ion	Resp	Lower	Upper
83	6873		
55	87.8	62.9	94.3
98	54.2	39.7	59.5



#37
 1,2-Dichloropropane
 Concen: 1.018 ug/L
 RT: 9.21 min Scan# 1212
 Delta R.T. -0.01 min
 Lab File: VY003872.D
 Acq: 04 Jan 2021 15:34

Tgt Ion	Resp	Lower	Upper
63	4601		
112	2.0	3.7	5.5#

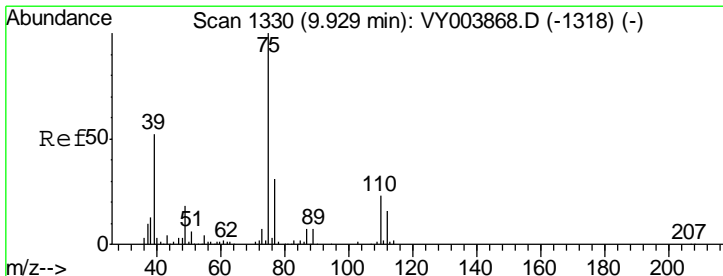
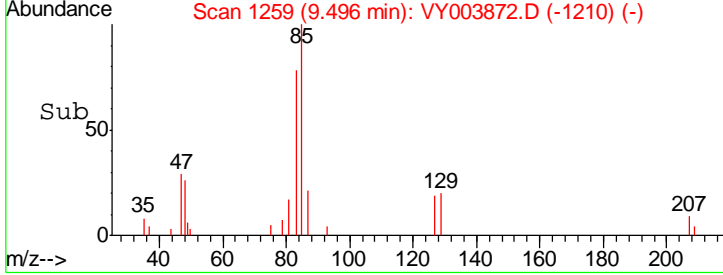
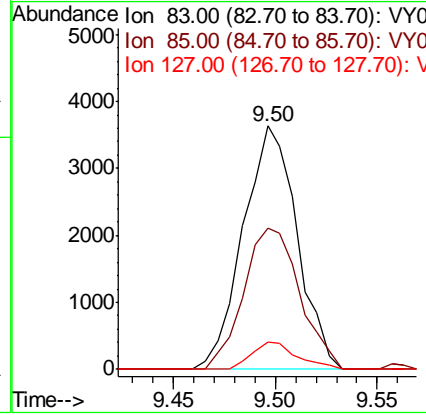
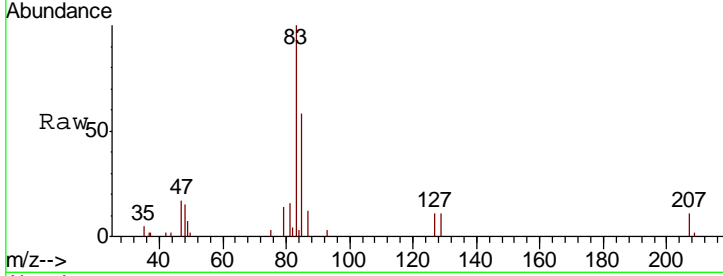




#38
 Bromodichloromethane
 Concen: 1.047 ug/L
 RT: 9.50 min Scan# 1259
 Delta R.T. 0.00 min
 Lab File: VY003872.D
 Acq: 04 Jan 2021 15:34

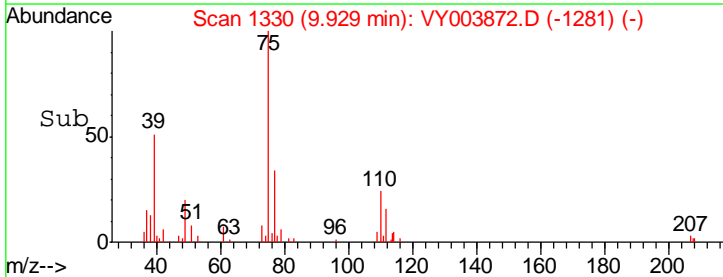
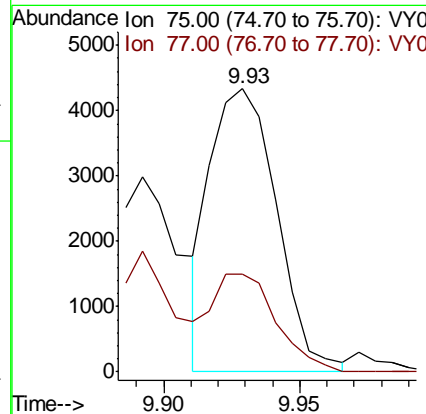
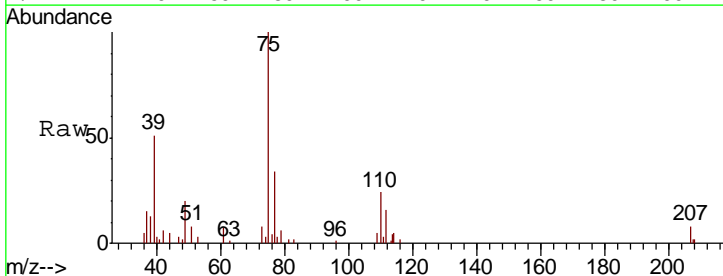
Instrument : MSVOA_Y
 ClientSampled : MDL-SOIL-07

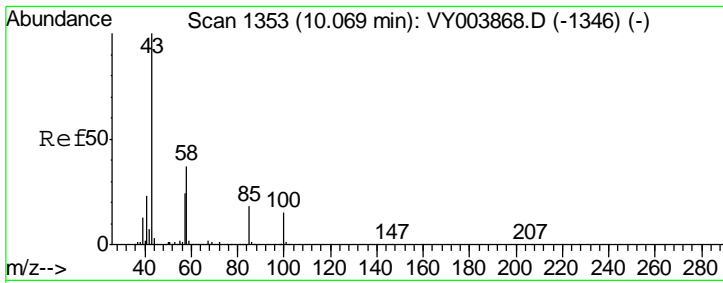
Tgt Ion	Resp	Lower	Upper
83	100		
85	57.8	44.2	82.0
127	11.1	7.3	10.9#



#39
 cis-1,3-Dichloropropene
 Concen: 0.950 ug/L
 RT: 9.93 min Scan# 1330
 Delta R.T. 0.00 min
 Lab File: VY003872.D
 Acq: 04 Jan 2021 15:34

Tgt Ion	Resp	Lower	Upper
75	100		
77	34.5	23.0	42.6

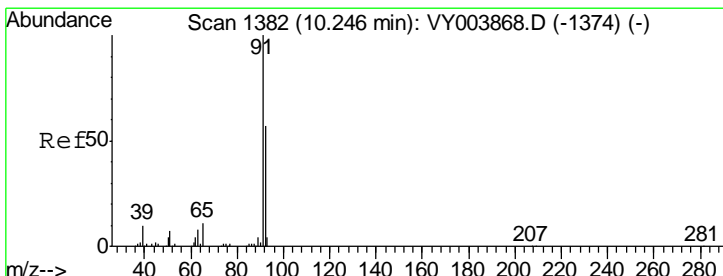
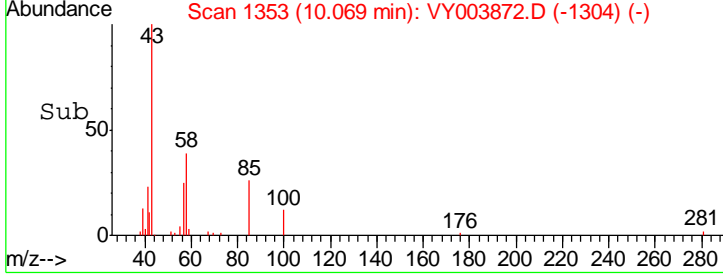
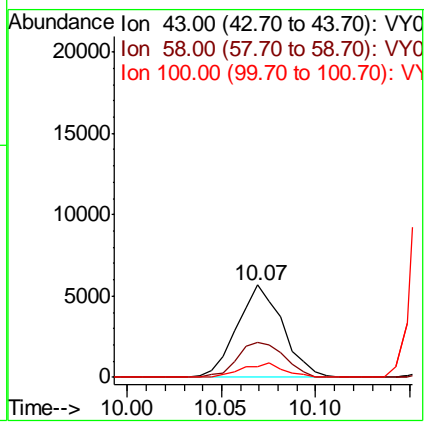
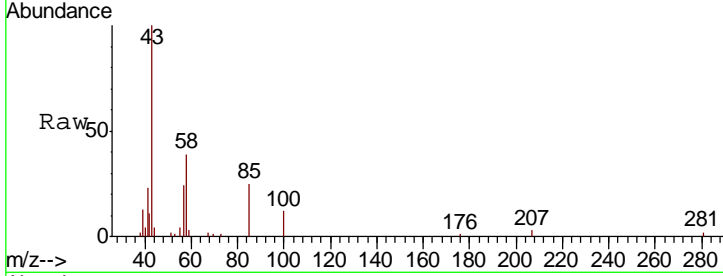




#40
 4-Methyl-2-pentanone
 Concen: 1.957 ug/L
 RT: 10.07 min Scan# 1353
 Delta R.T. 0.00 min
 Lab File: VY003872.D
 Acq: 04 Jan 2021 15:34

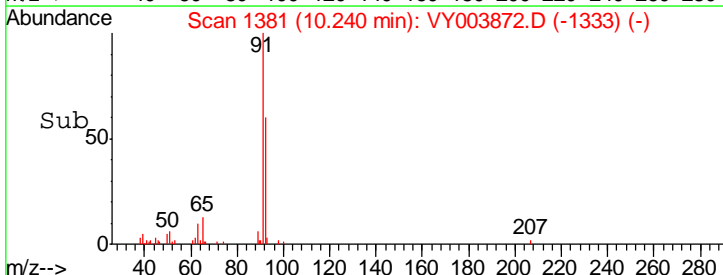
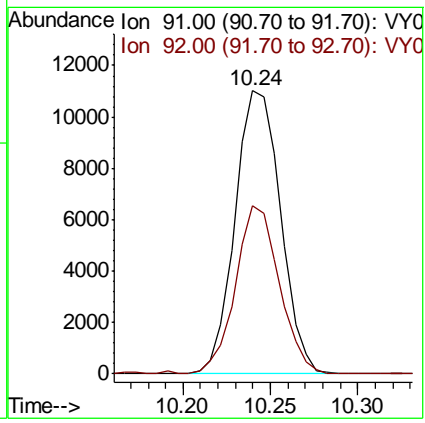
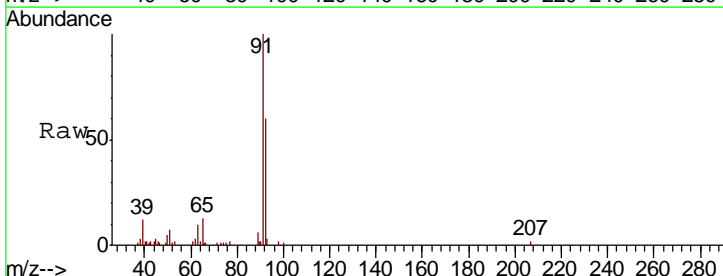
Instrument : MSVOA_Y
 ClientSampled : MDL-SOIL-07

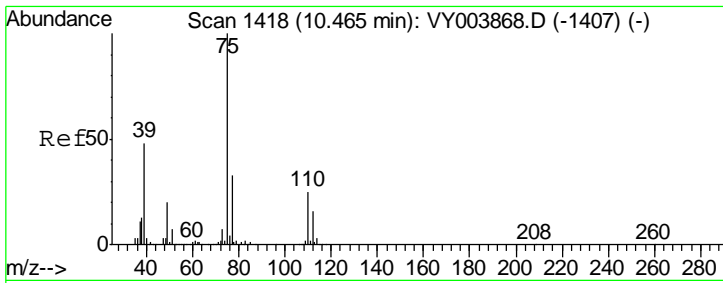
Tgt Ion	Resp	Lower	Upper
43	100		
58	39.1	29.6	44.4
100	14.6	11.8	17.6



#42
 Toluene
 Concen: 1.015 ug/L
 RT: 10.24 min Scan# 1381
 Delta R.T. -0.01 min
 Lab File: VY003872.D
 Acq: 04 Jan 2021 15:34

Tgt Ion	Resp	Lower	Upper
91	100		
92	59.6	39.9	74.1

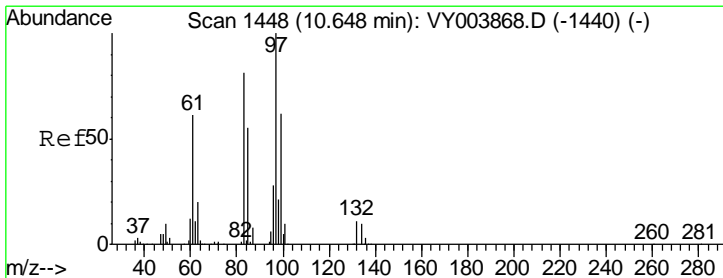
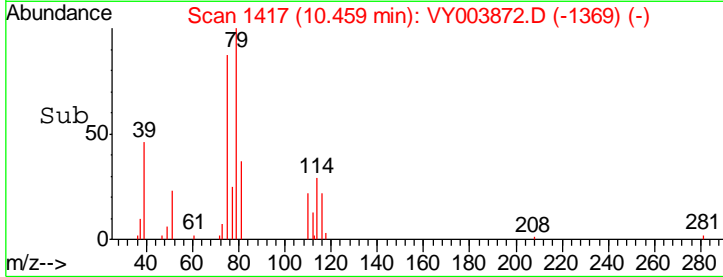
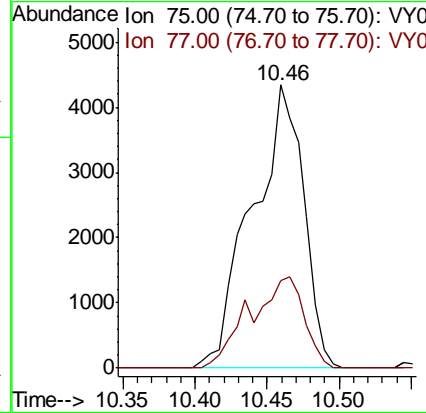
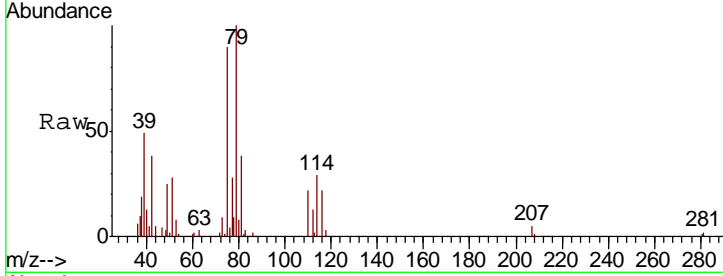




#44
 trans-1,3-Dichloropropene
 Concen: 1.453 ug/L
 RT: 10.46 min Scan# 1417
 Delta R.T. -0.01 min
 Lab File: VY003872.D
 Acq: 04 Jan 2021 15:34

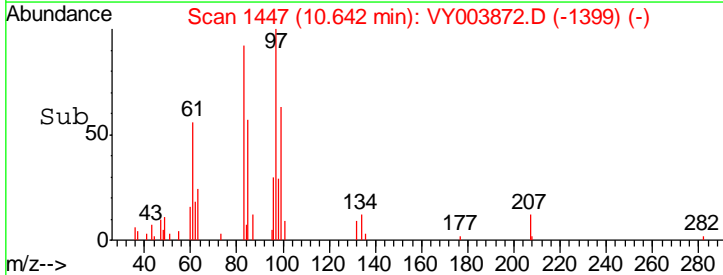
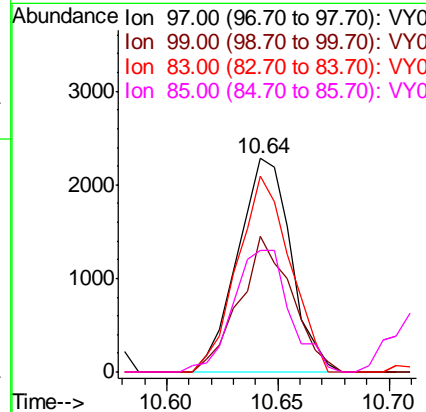
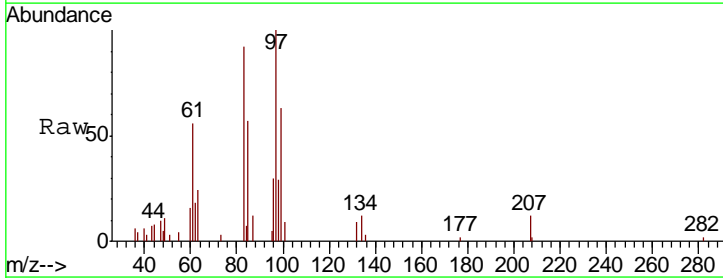
Instrument : MSVOA_Y
 ClientSampled : MDL-SOIL-07

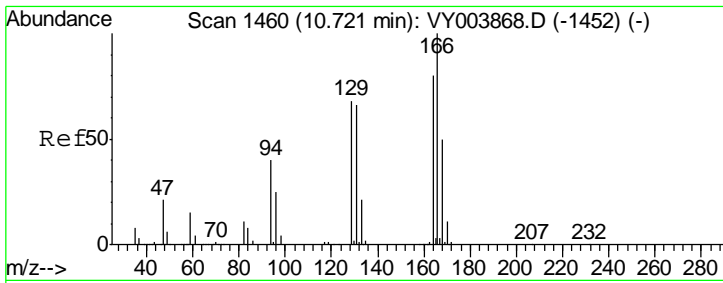
Tgt Ion	Resp	Lower	Upper
75	10835		
77	31.0	21.9	40.7



#45
 1,1,2-Trichloroethane
 Concen: 0.980 ug/L
 RT: 10.64 min Scan# 1447
 Delta R.T. -0.01 min
 Lab File: VY003872.D
 Acq: 04 Jan 2021 15:34

Tgt Ion	Resp	Lower	Upper
97	3805		
99	63.3	46.0	85.4
83	91.5	60.8	112.8
85	57.2	38.4	71.2



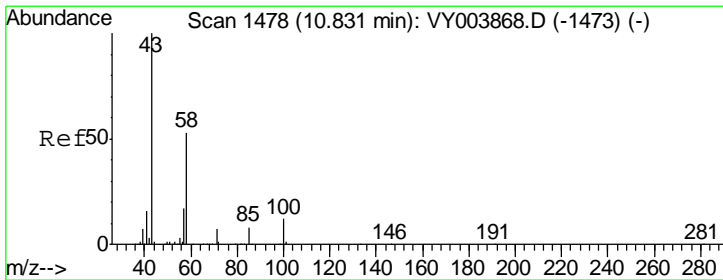
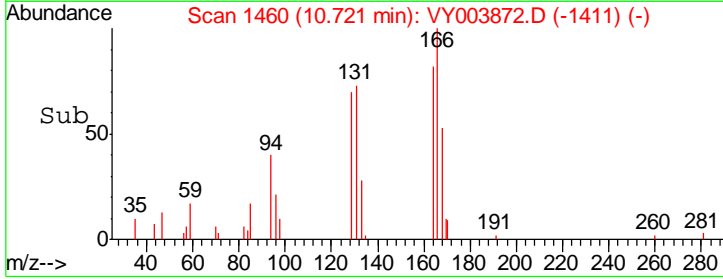
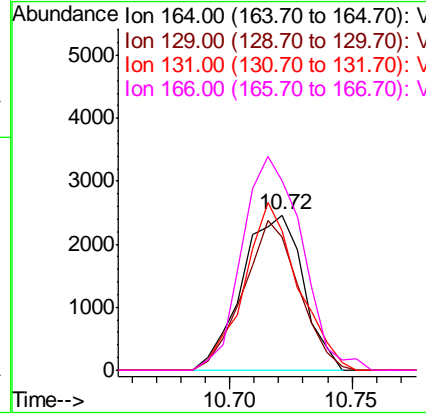
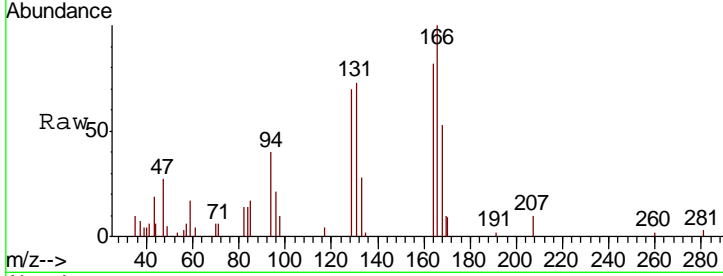


#46
 Tetrachloroethene
 Concen: 1.018 ug/L
 RT: 10.72 min Scan# 1460
 Delta R.T. 0.00 min
 Lab File: VY003872.D
 Acq: 04 Jan 2021 15:34

Instrument : MSVOA_Y
 ClientSampled : MDL-SOIL-07

Tot Ion: 164 Resp: 4323

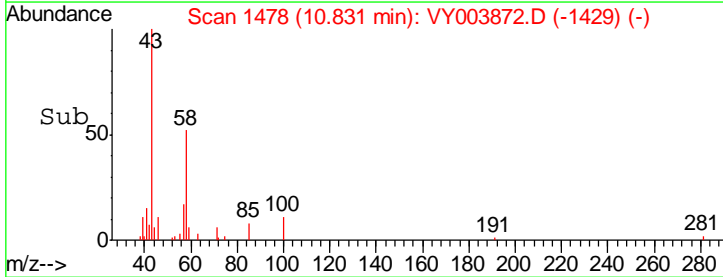
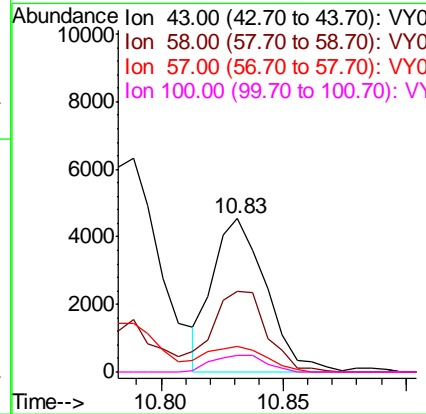
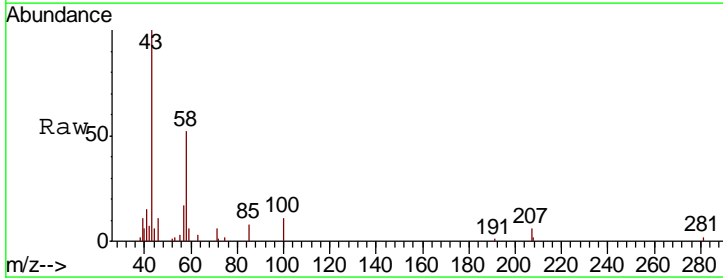
Ion	Ratio	Lower	Upper
164	100		
129	85.8	62.5	116.1
131	89.5	60.7	112.7
166	122.0	87.2	162.0

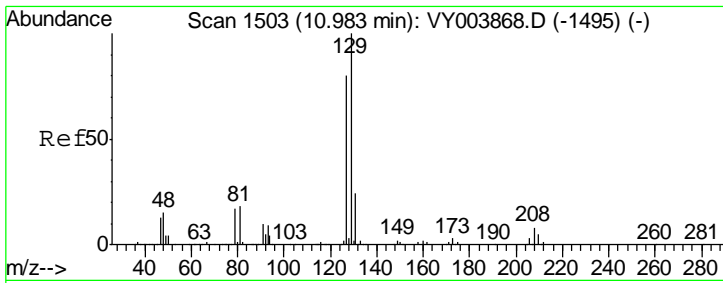


#48
 2-Hexanone
 Concen: 1.955 ug/L
 RT: 10.83 min Scan# 1478
 Delta R.T. 0.00 min
 Lab File: VY003872.D
 Acq: 04 Jan 2021 15:34

Tgt Ion: 43 Resp: 6876

Ion	Ratio	Lower	Upper
43	100		
58	54.2	40.6	60.8
57	20.0	14.5	21.7
100	11.0	9.1	13.7

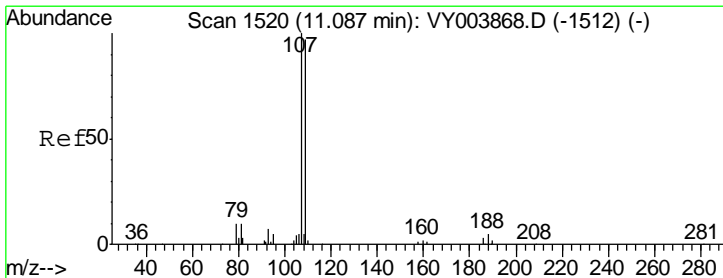
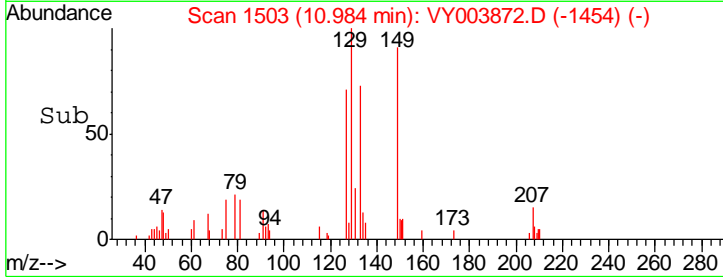
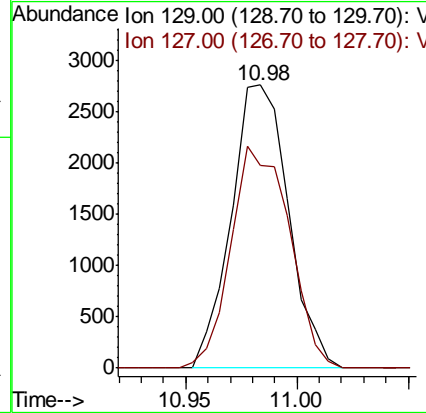
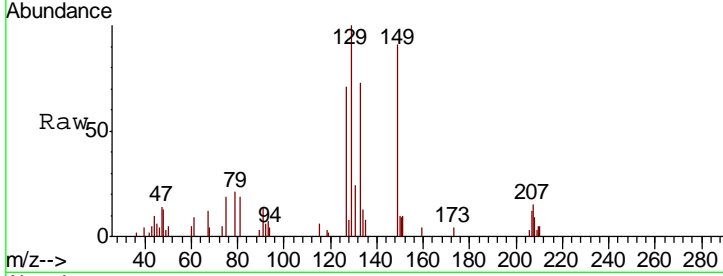




#49
 Dibromochloromethane
 Concen: 1.007 ug/L
 RT: 10.98 min Scan# 1503
 Delta R.T. 0.00 min
 Lab File: VY003872.D
 Acq: 04 Jan 2021 15:34

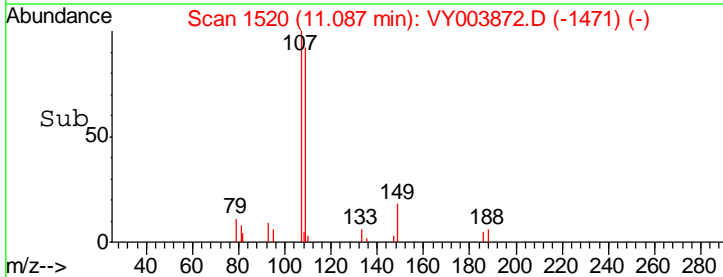
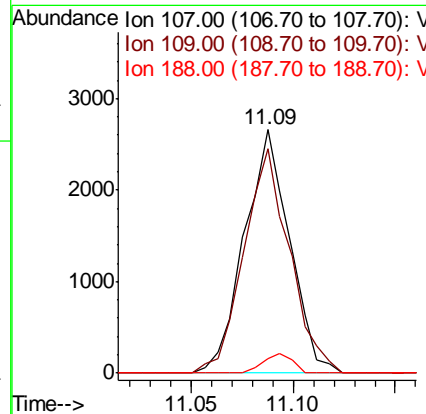
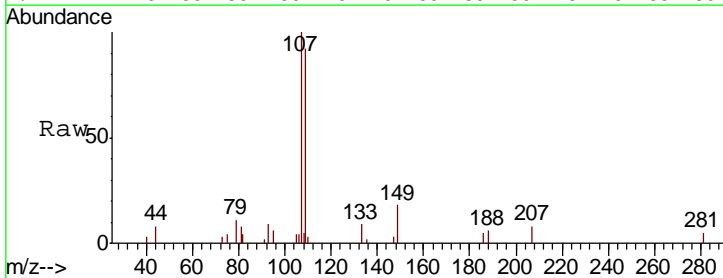
Instrument :
 MSVOA_Y
 ClientSampled :
 MDL-SOIL-07

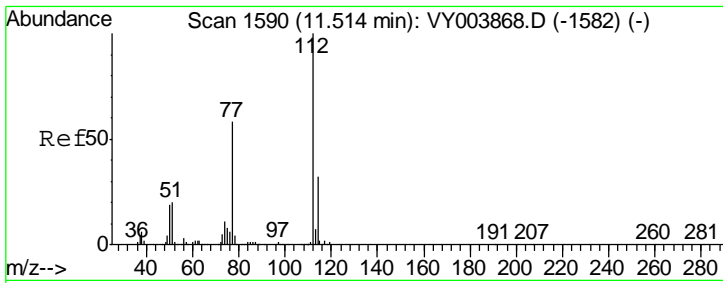
Tgt Ion	Resp	Lower	Upper
129	4951		
127	71.5	52.7	97.9



#50
 1,2-Dibromoethane
 Concen: 1.065 ug/L
 RT: 11.09 min Scan# 1520
 Delta R.T. 0.00 min
 Lab File: VY003872.D
 Acq: 04 Jan 2021 15:34

Tgt Ion	Resp	Lower	Upper
107	4084		
109	91.9	65.5	121.7
188	6.1	3.6	5.4#

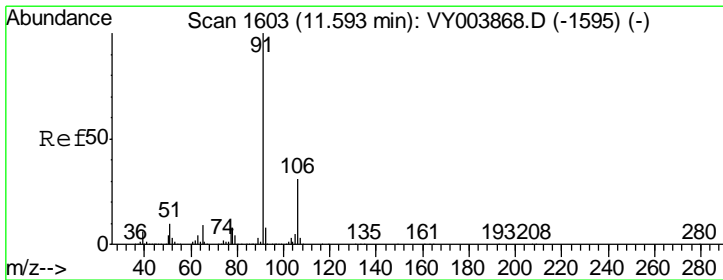
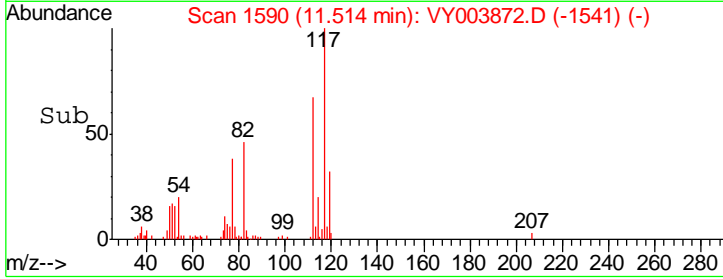
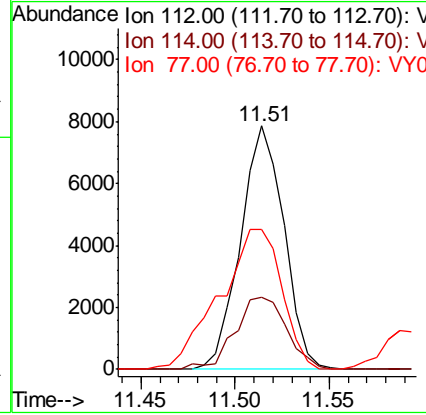
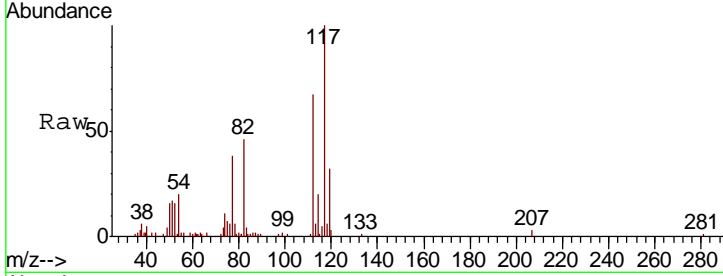




#51
 Chlorobenzene
 Concen: 0.989 ug/L
 RT: 11.51 min Scan# 1590
 Delta R.T. 0.00 min
 Lab File: VY003872.D
 Acq: 04 Jan 2021 15:34

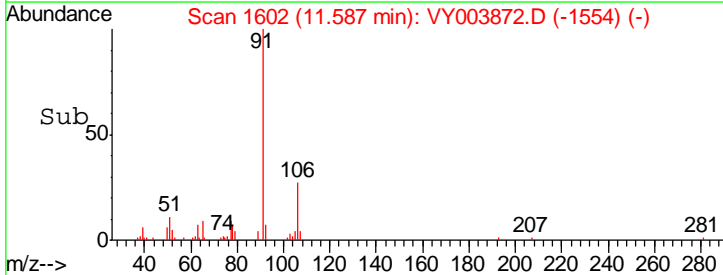
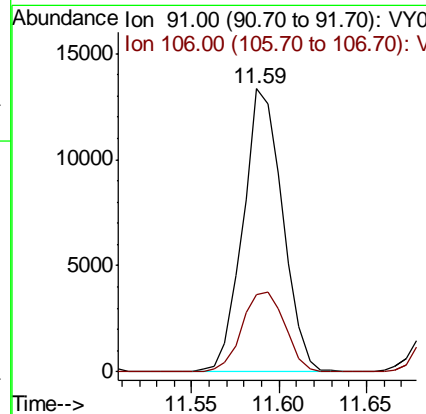
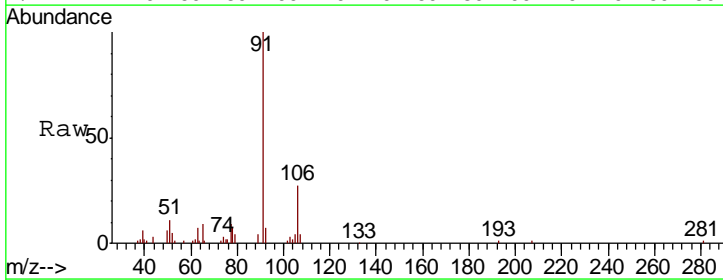
Instrument :
 MSVOA_Y
 ClientSampled :
 MDL-SOIL-07

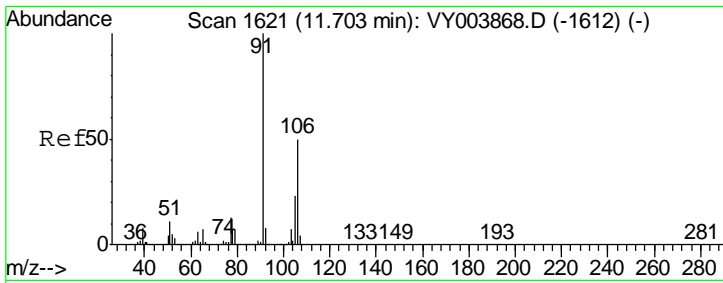
Tgt Ion	Resp	Lower	Upper
112	12567		
114	29.8	22.5	41.9
77	57.4	45.2	67.8



#52
 Ethylbenzene
 Concen: 0.959 ug/L
 RT: 11.59 min Scan# 1602
 Delta R.T. -0.01 min
 Lab File: VY003872.D
 Acq: 04 Jan 2021 15:34

Tgt Ion	Resp	Lower	Upper
91	21105		
106	27.5	21.6	40.0

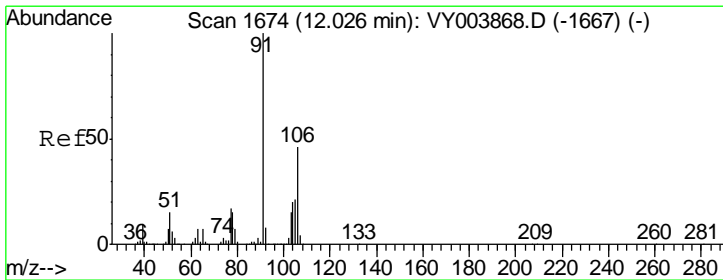
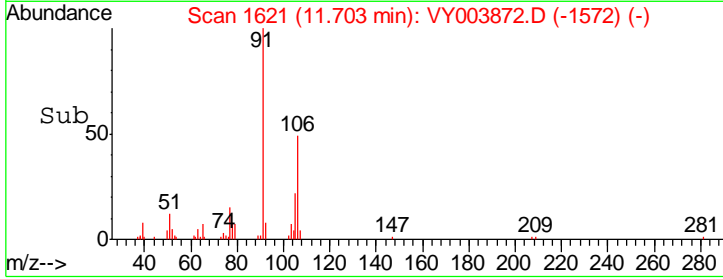
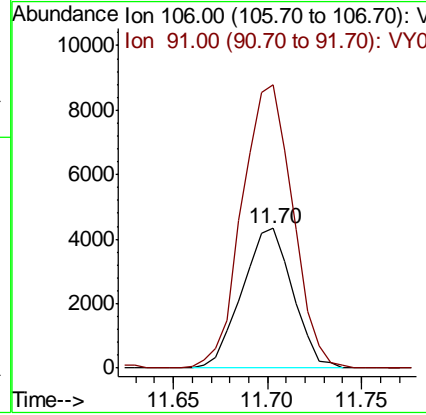
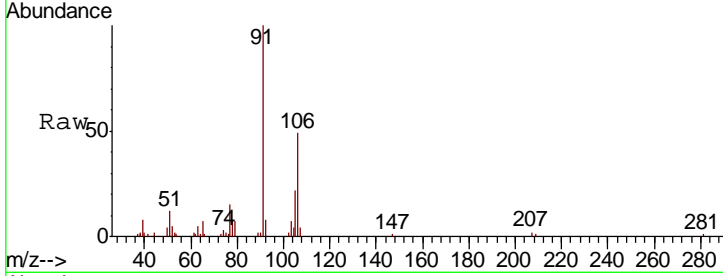




#53
 m,p-Xylene
 Concen: 0.968 ug/L
 RT: 11.70 min Scan# 1621
 Delta R.T. 0.00 min
 Lab File: VY003872.D
 Acq: 04 Jan 2021 15:34

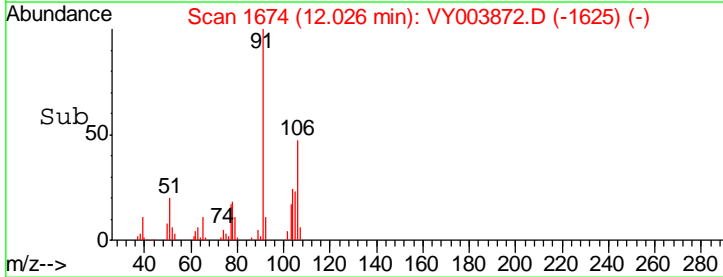
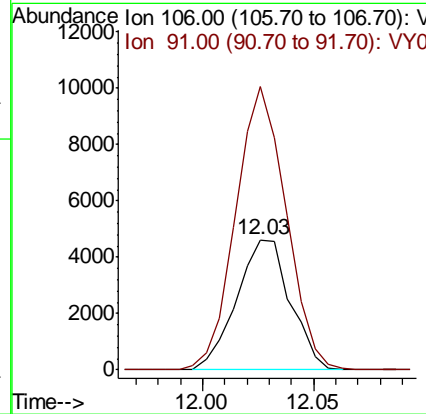
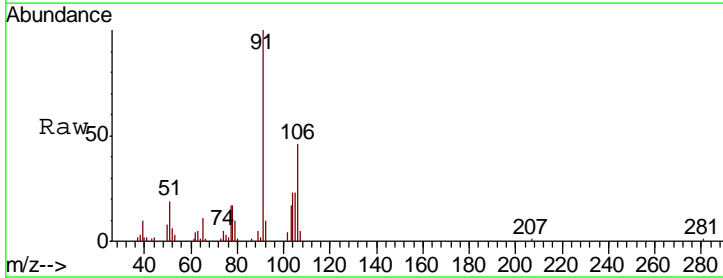
Instrument : MSVOA_Y
 ClientSampled : MDL-SOIL-07

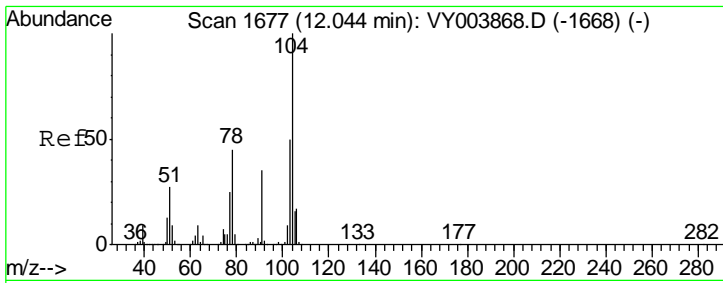
Tgt Ion:106 Resp: 8078
 Ion Ratio Lower Upper
 106 100
 91 202.3 146.3 271.7



#54
 o-Xylene
 Concen: 0.954 ug/L
 RT: 12.03 min Scan# 1674
 Delta R.T. 0.00 min
 Lab File: VY003872.D
 Acq: 04 Jan 2021 15:34

Tgt Ion:106 Resp: 7751
 Ion Ratio Lower Upper
 106 100
 91 217.7 147.7 274.3

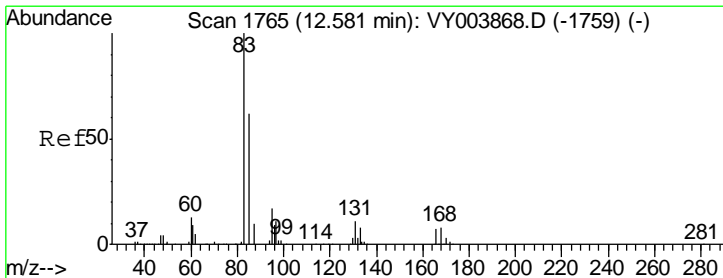
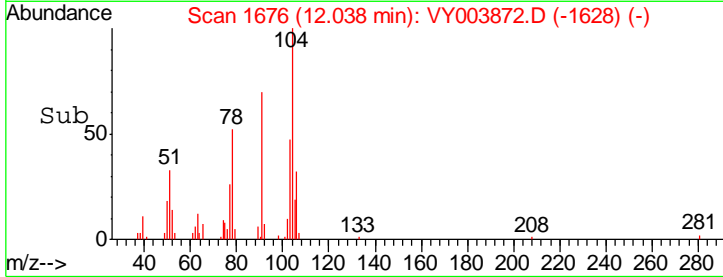
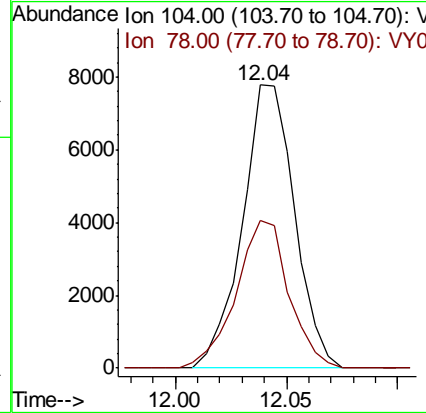
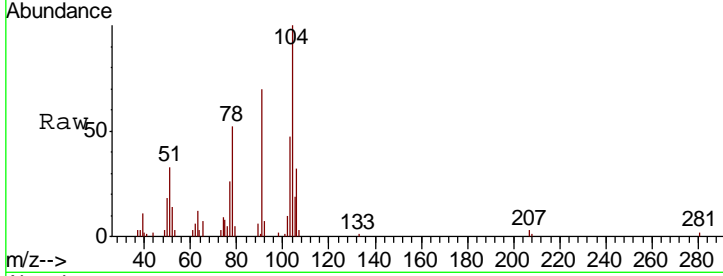




#55
 Styrene
 Concen: 0.905 ug/L
 RT: 12.04 min Scan# 1676
 Delta R.T. -0.01 min
 Lab File: VY003872.D
 Acq: 04 Jan 2021 15:34

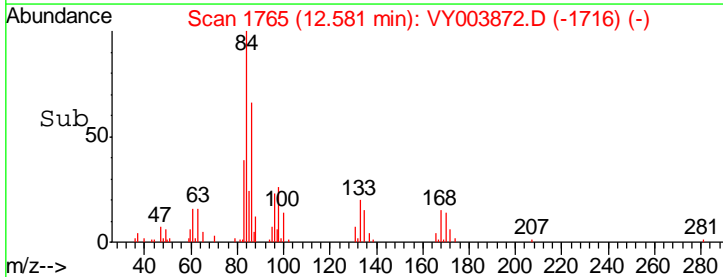
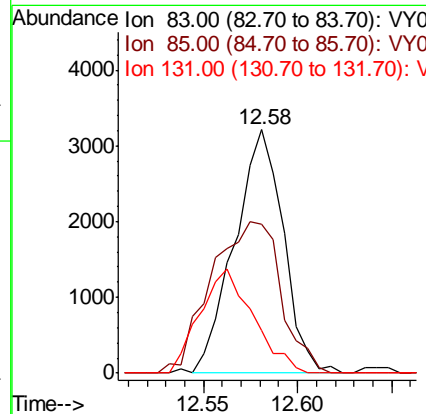
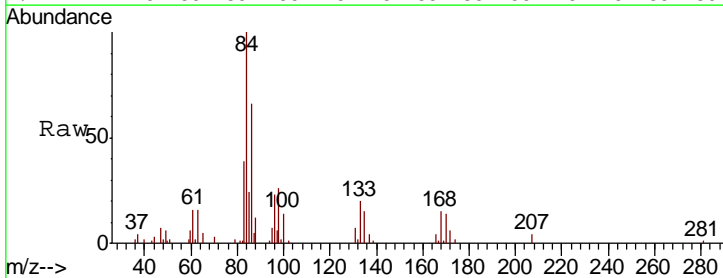
Instrument :
 MSVOA_Y
 ClientSampled :
 MDL-SOIL-07

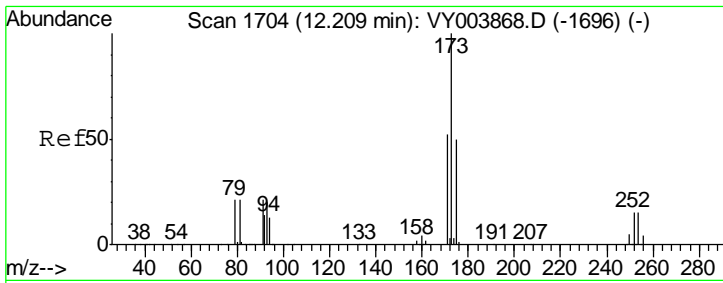
Tgt Ion: 104 Resp: 12723
 Ion Ratio Lower Upper
 104 100
 78 52.3 33.2 61.7



#57
 1,1,2,2-Tetrachloroethane
 Concen: 1.253 ug/L
 RT: 12.58 min Scan# 1765
 Delta R.T. 0.00 min
 Lab File: VY003872.D
 Acq: 04 Jan 2021 15:34

Tgt Ion: 83 Resp: 5759
 Ion Ratio Lower Upper
 83 100
 85 61.3 44.9 83.3
 131 17.7 9.0 13.6#

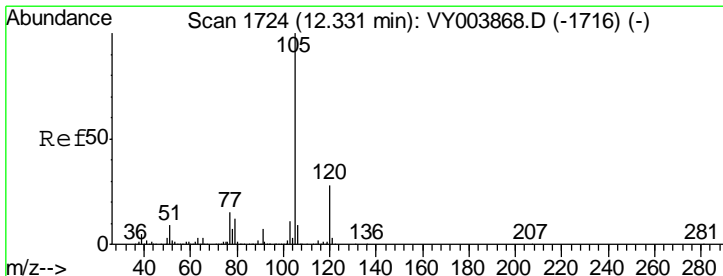
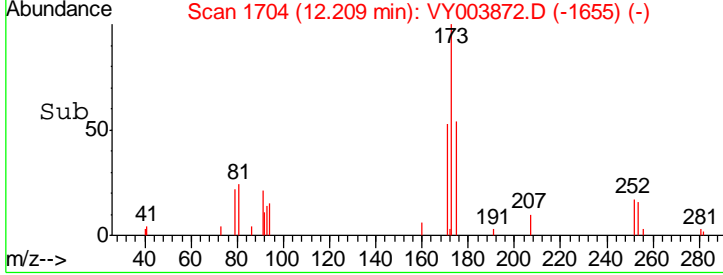
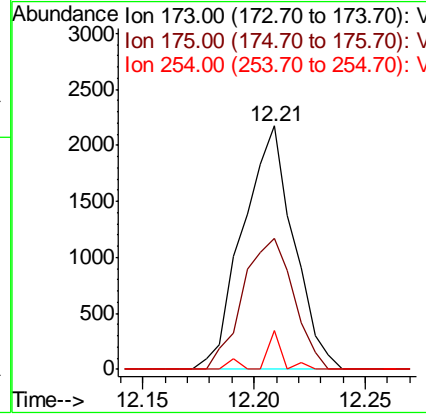
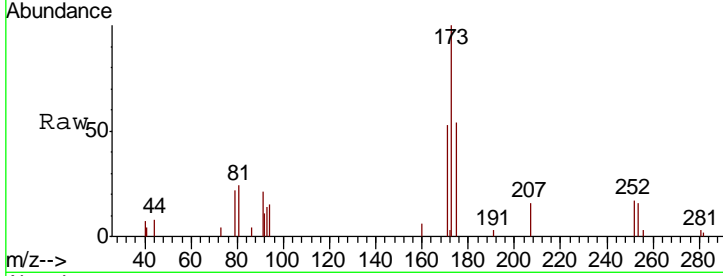




#59
 Bromoform
 Concen: 0.993 ug/L
 RT: 12.21 min Scan# 1704
 Delta R.T. 0.00 min
 Lab File: VY003872.D
 Acq: 04 Jan 2021 15:34

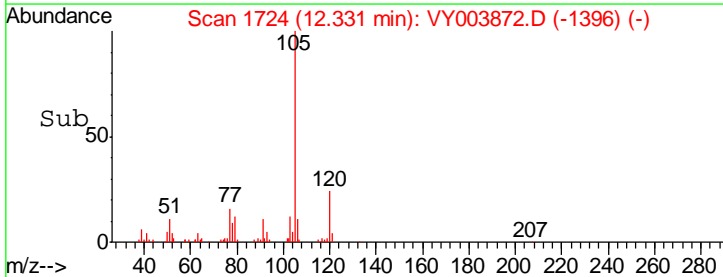
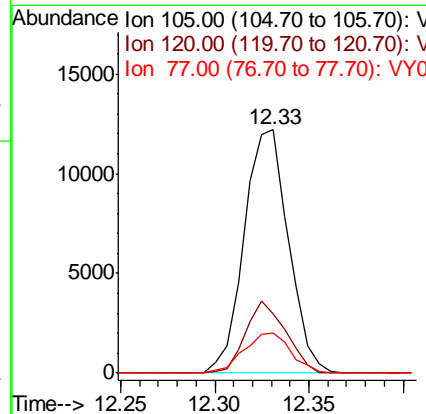
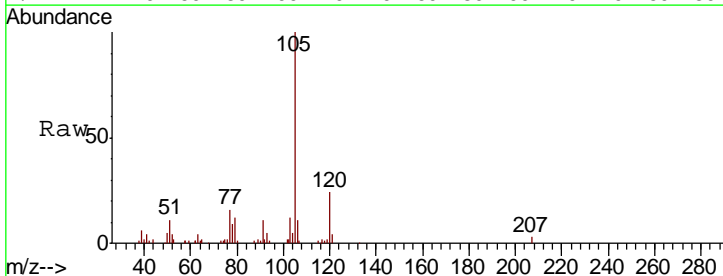
Instrument : MSVOA_Y
 ClientSampled : MDL-SOIL-07

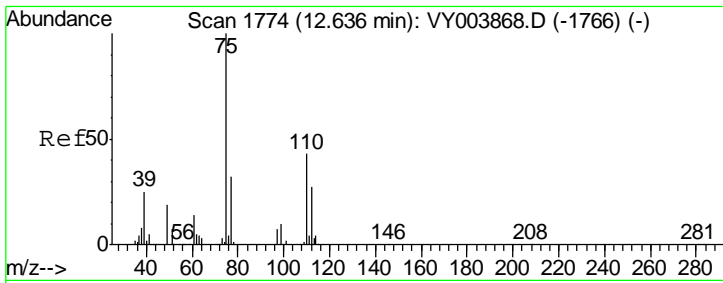
Tgt Ion	Resp	Lower	Upper
173	100		
175	53.9	38.9	58.3
254	3.6	11.5	17.3#



#60
 Isopropylbenzene
 Concen: 0.934 ug/L
 RT: 12.33 min Scan# 1724
 Delta R.T. 0.00 min
 Lab File: VY003872.D
 Acq: 04 Jan 2021 15:34

Tgt Ion	Resp	Lower	Upper
105	100		
120	26.6	21.7	32.5
77	17.3	12.9	19.3

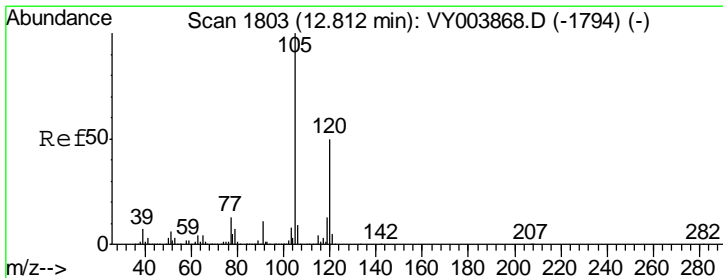
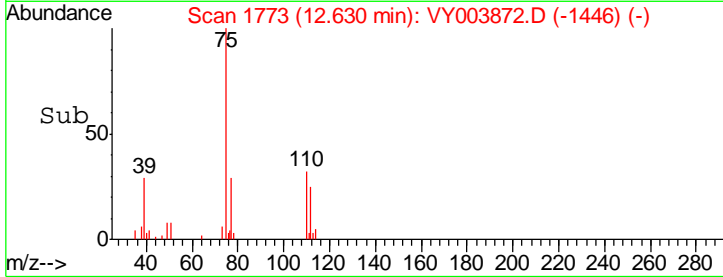
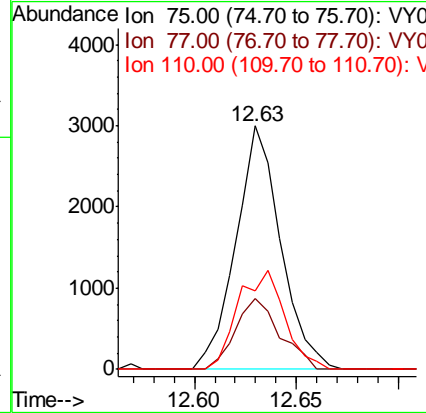
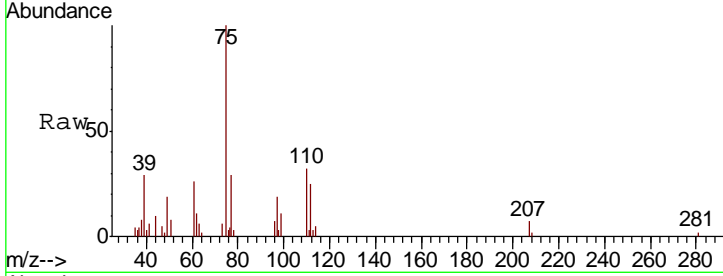




#61
 1,2,3-Trichloropropane
 Concen: 1.155 ug/L
 RT: 12.63 min Scan# 1773
 Delta R.T. -0.01 min
 Lab File: VY003872.D
 Acq: 04 Jan 2021 15:34

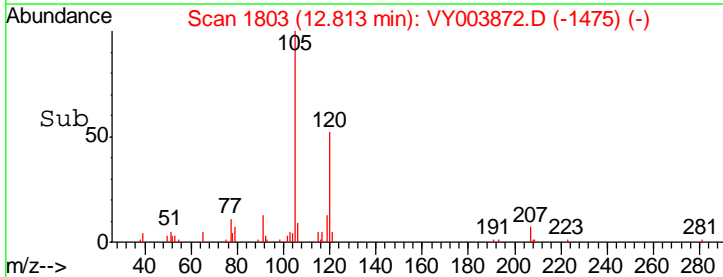
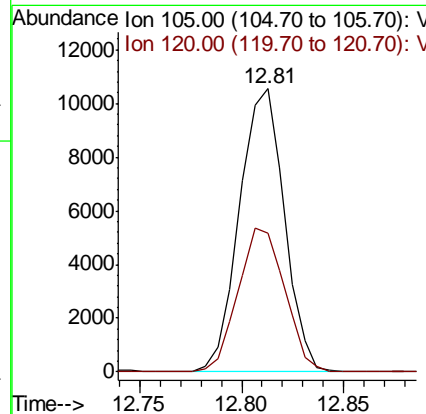
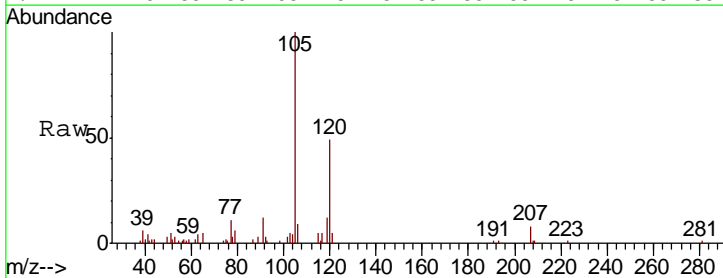
Instrument : MSVOA_Y
 ClientSampled : MDL-SOIL-07

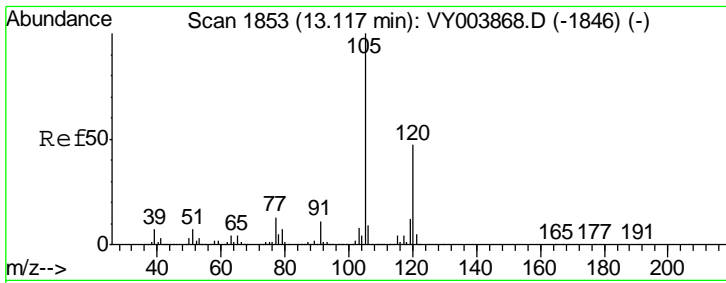
Tgt Ion	Resp	Lower	Upper
75	4567		
77	28.8	26.2	39.4
110	42.3	32.4	48.6



#62
 1,3,5-Trimethylbenzene
 Concen: 0.912 ug/L
 RT: 12.81 min Scan# 1803
 Delta R.T. 0.00 min
 Lab File: VY003872.D
 Acq: 04 Jan 2021 15:34

Tgt Ion	Resp	Lower	Upper
105	16113		
120	52.8	39.0	58.4

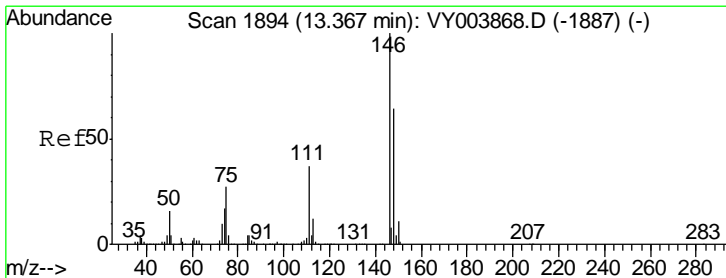
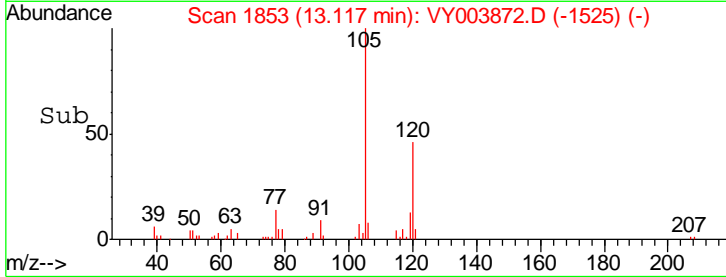
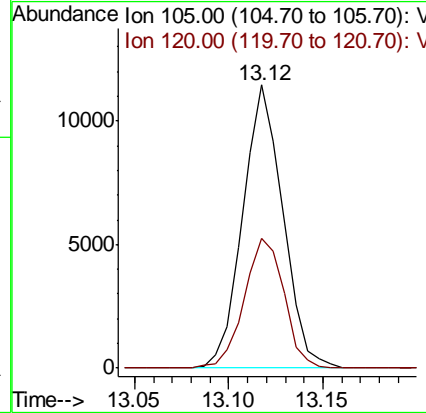
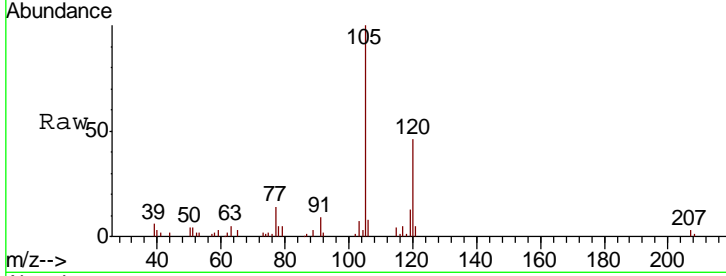




#63
 1,2,4-Trimethylbenzene
 Concen: 0.944 ug/L
 RT: 13.12 min Scan# 1853
 Delta R.T. 0.00 min
 Lab File: VY003872.D
 Acq: 04 Jan 2021 15:34

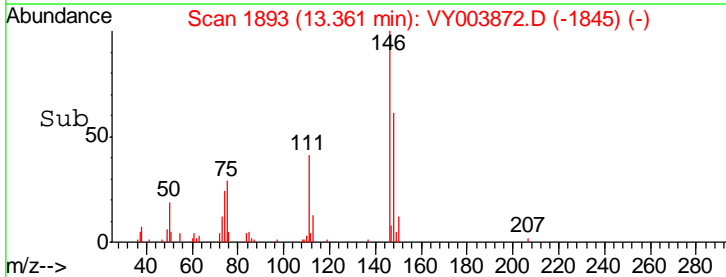
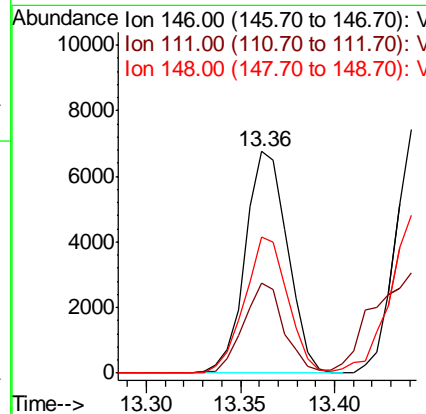
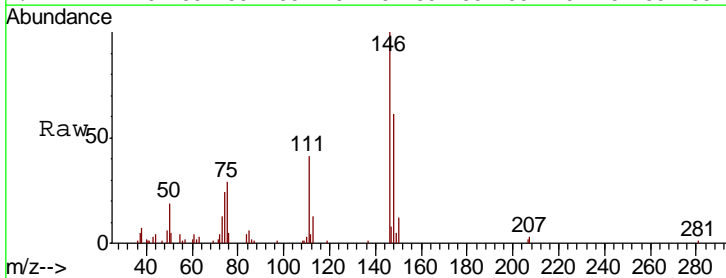
Instrument :
 MSVOA_Y
 ClientSampled :
 MDL-SOIL-07

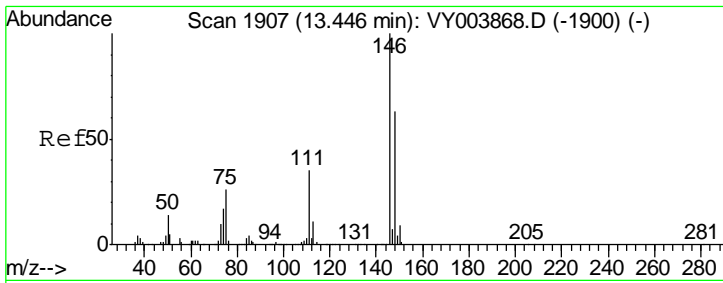
Tgt Ion	Resp	Lower	Upper
105	16901		
120	45.6	36.5	54.7



#64
 1,3-Dichlorobenzene
 Concen: 1.017 ug/L
 RT: 13.36 min Scan# 1893
 Delta R.T. -0.01 min
 Lab File: VY003872.D
 Acq: 04 Jan 2021 15:34

Tgt Ion	Resp	Lower	Upper
146	10486		
111	40.7	27.7	51.5
148	61.4	45.4	84.4

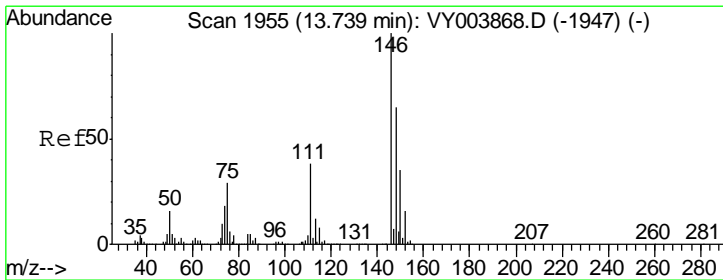
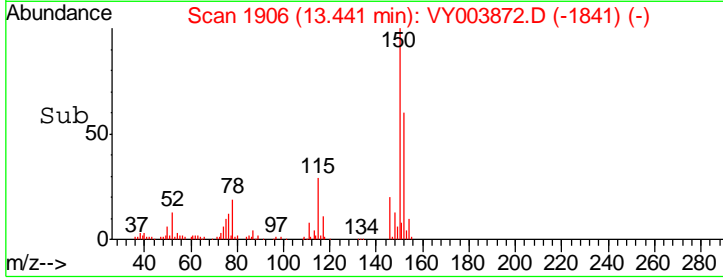
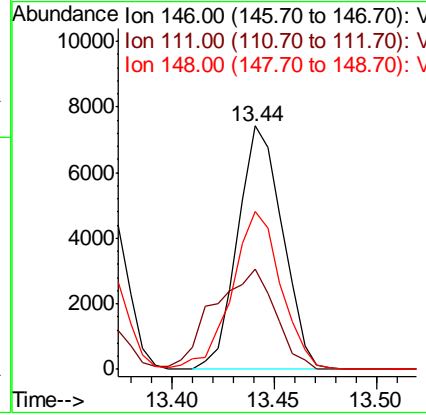
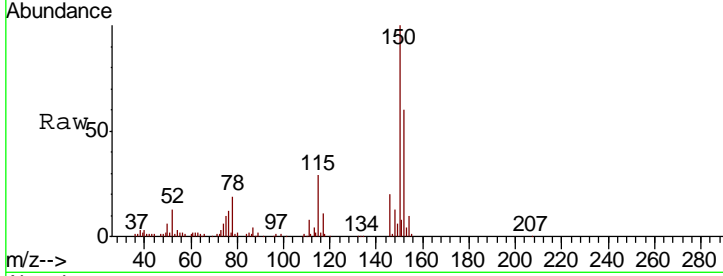




#65
 1,4-Dichlorobenzene
 Concen: 1.087 ug/L
 RT: 13.44 min Scan# 1906
 Delta R.T. -0.01 min
 Lab File: VY003872.D
 Acq: 04 Jan 2021 15:34

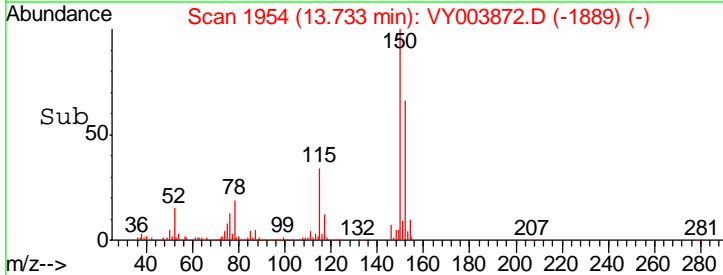
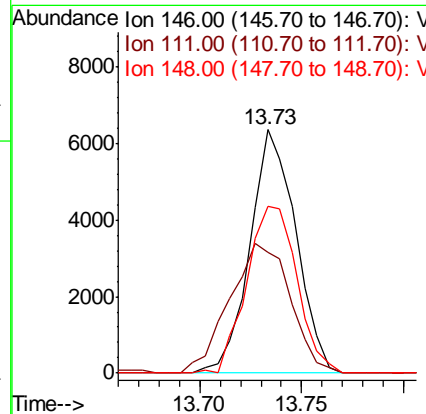
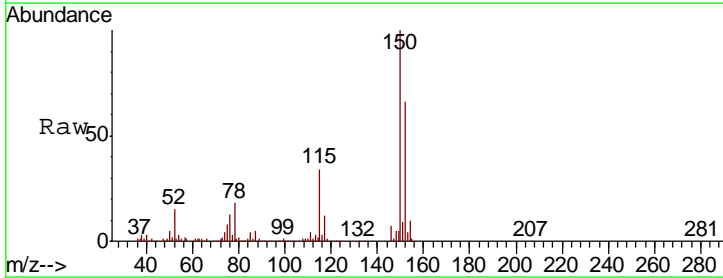
Instrument :
 MSVOA_Y
 ClientSampled :
 MDL-SOIL-07

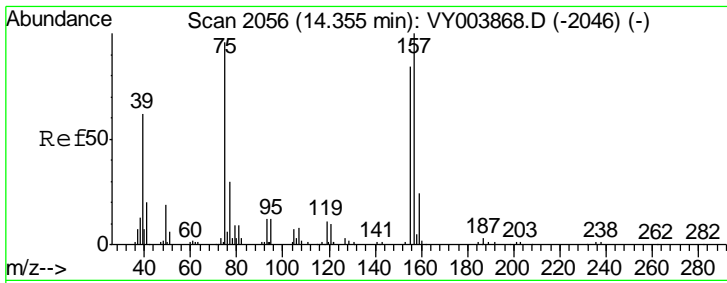
Tgt Ion	Resp	Lower	Upper
146	11349		
111	41.1	25.7	47.7
148	65.1	44.4	82.4



#67
 1,2-Dichlorobenzene
 Concen: 1.028 ug/L
 RT: 13.73 min Scan# 1954
 Delta R.T. -0.01 min
 Lab File: VY003872.D
 Acq: 04 Jan 2021 15:34

Tgt Ion	Resp	Lower	Upper
146	9924		
111	49.8	31.3	46.9
148	68.5	51.0	76.4

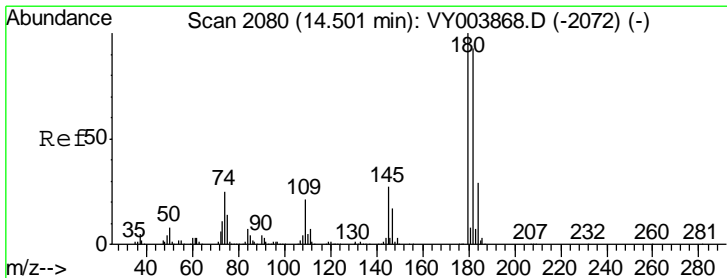
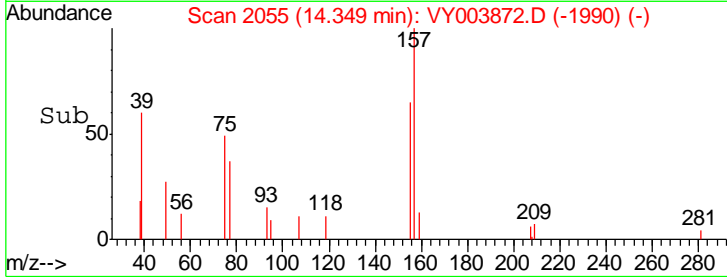
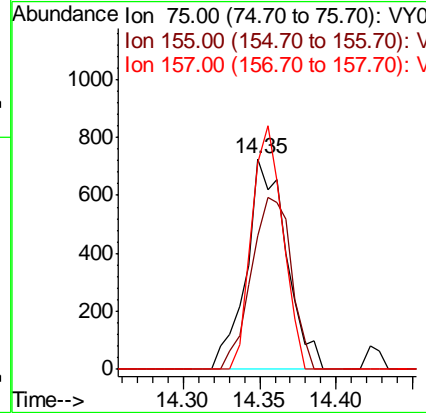
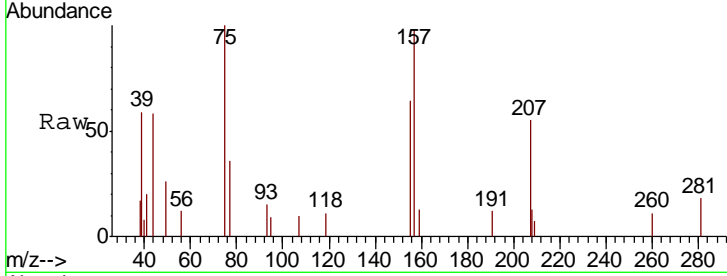




#68
 1,2-Dibromo-3-chloropropane
 Concen: 1.339 ug/L
 RT: 14.35 min Scan# 2055
 Delta R.T. -0.01 min
 Lab File: VY003872.D
 Acq: 04 Jan 2021 15:34

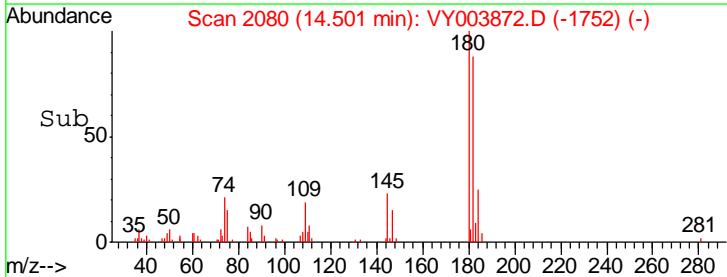
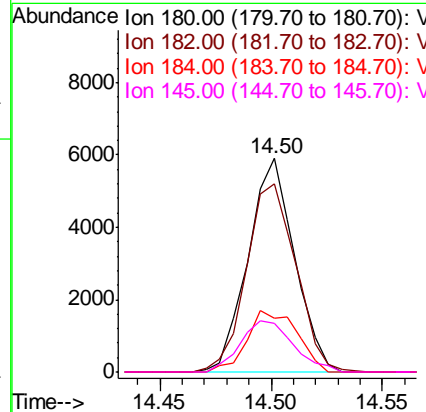
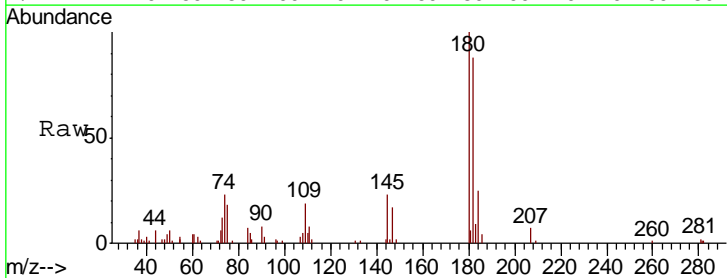
Instrument :
 MSVOA_Y
 ClientSampleId :
 MDL-SOIL-07

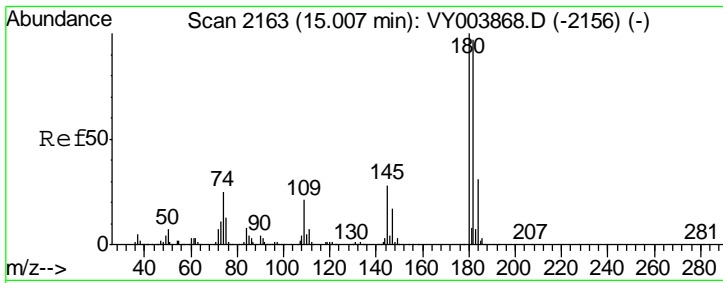
Tgt Ion	Resp	Lower	Upper
75	100		
155	63.6	68.2	102.4#
157	98.2	90.2	135.4



#69
 1,3,5-Trichlorobenzene
 Concen: 1.069 ug/L
 RT: 14.50 min Scan# 2080
 Delta R.T. 0.00 min
 Lab File: VY003872.D
 Acq: 04 Jan 2021 15:34

Tgt Ion	Resp	Lower	Upper
180	100		
182	94.0	75.6	113.4
184	30.7	24.9	37.3
145	27.2	21.8	32.6

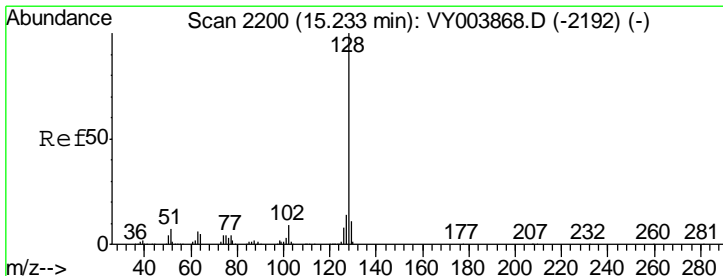
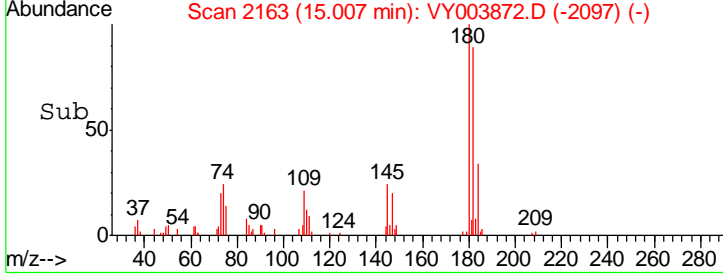
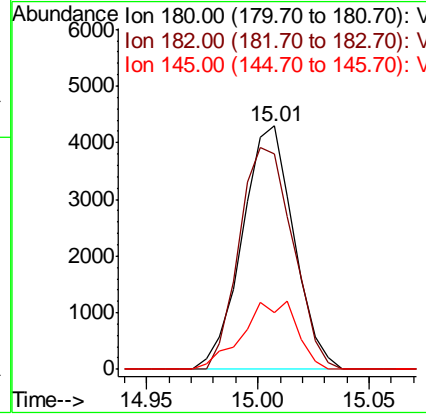
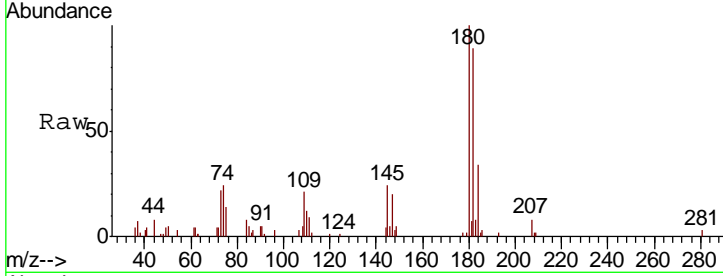




#70
 1,2,4-trichlorobenzene
 Concen: 1.017 ug/L
 RT: 15.01 min Scan# 2163
 Delta R.T. 0.00 min
 Lab File: VY003872.D
 Acq: 04 Jan 2021 15:34

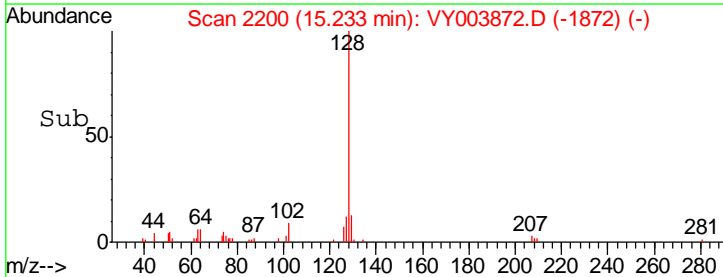
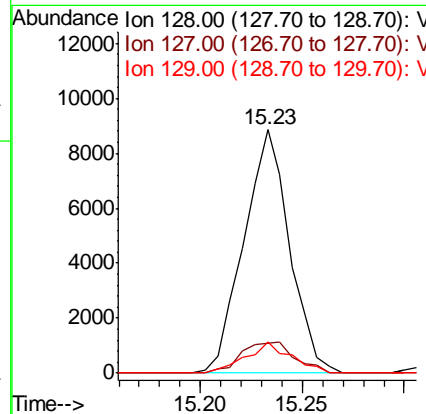
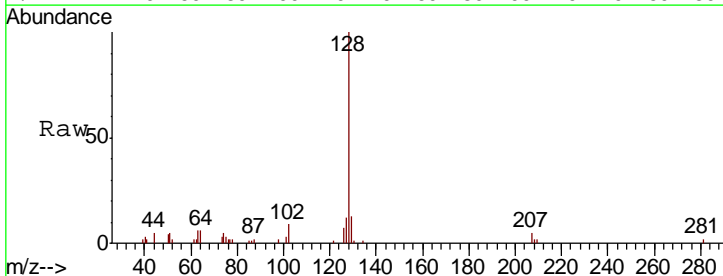
Instrument :
 MSVOA_Y
 ClientSampled :
 MDL-SOIL-07

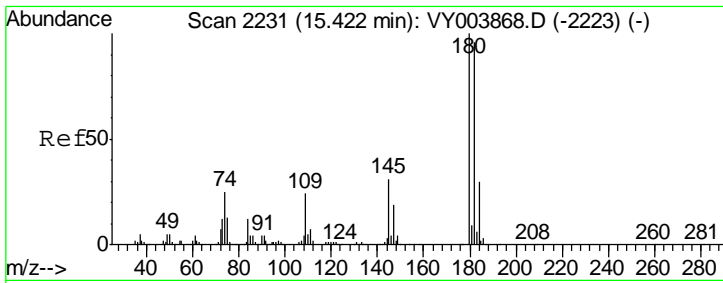
Tgt Ion	Resp	Lower	Upper
180	6930		
182	94.9	76.1	114.1
145	29.4	22.6	33.8



#71
 Naphthalene
 Concen: 0.971 ug/L
 RT: 15.23 min Scan# 2200
 Delta R.T. 0.00 min
 Lab File: VY003872.D
 Acq: 04 Jan 2021 15:34

Tgt Ion	Resp	Lower	Upper
128	13816		
127	14.8	10.7	16.1
129	12.5	8.9	13.3

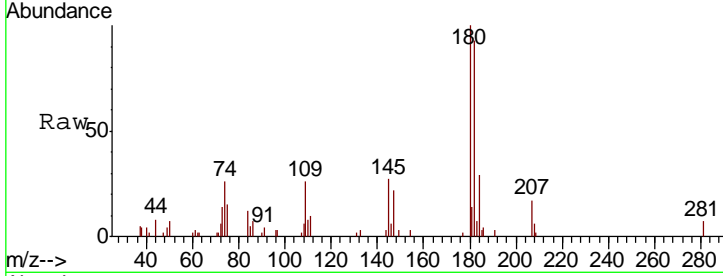




#72
 1,2,3-Trichlorobenzene
 Concen: 1.060 ug/L
 RT: 15.42 min Scan# 2231
 Delta R.T. 0.00 min
 Lab File: VY003872.D
 Acq: 04 Jan 2021 15:34

Instrument : MSVOA_Y
 ClientSampleId : MDL-SOIL-07

Tot Ion	180	182	145	Resp	Lower	Upper
	100	93.7	30.6	6383	74.6	111.8
					23.3	34.9



Abundance
 Ion 180.00 (179.70 to 180.70): V
 Ion 182.00 (181.70 to 182.70): V
 Ion 145.00 (144.70 to 145.70): V

