

Data Path : Z:\voasrv\HPCHEM1\MSVOA_Y\Data\VY010622\
 Data File : VY007043.D
 Acq On : 06 Jan 2022 19:26
 Operator : SY/MD
 Sample : N1051-02
 Misc : 7.07g/5.0mL/MSVOA_Y/SOIL
 ALS Vial : 23 Sample Multiplier: 1

Instrument :
 MSVOA_Y
 ClientSampleId :
 SB-2-(9-9.5)

Quant Time: Jan 07 11:49:20 2022
 Quant Method : Z:\voasrv\HPCHEM1\MSVOA_Y\methods\82Y010522S.M
 Quant Title : SW846 8260
 QLast Update : Thu Jan 06 04:51:57 2022
 Response via : Initial Calibration

Compound	R.T.	QIon	Response	Conc	Units	Dev(Min)

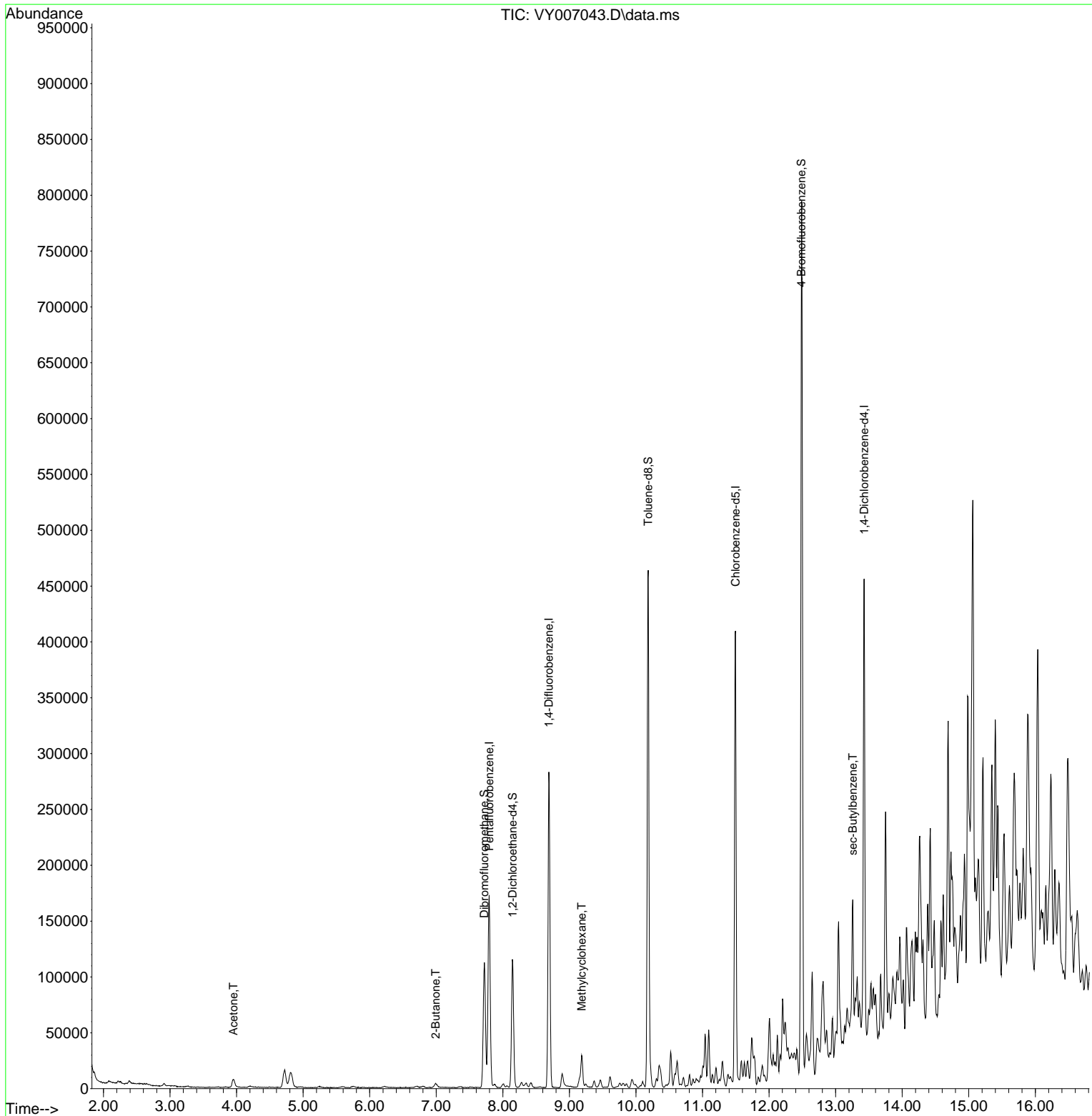
Internal Standards						
1) Pentafluorobenzene	7.795	168	128215	50.000	ug/l	0.00
34) 1,4-Difluorobenzene	8.691	114	241242	50.000	ug/l	0.00
63) Chlorobenzene-d5	11.496	117	228924	50.000	ug/l	0.00
72) 1,4-Dichlorobenzene-d4	13.428	152	103864	50.000	ug/l	0.00
System Monitoring Compounds						
33) 1,2-Dichloroethane-d4	8.149	65	90998	60.125	ug/l	0.00
Spiked Amount	50.000	Range	50 - 163	Recovery	=	120.260%
35) Dibromofluoromethane	7.722	113	81418	51.342	ug/l	0.00
Spiked Amount	50.000	Range	54 - 147	Recovery	=	102.680%
50) Toluene-d8	10.185	98	298549	50.671	ug/l	0.00
Spiked Amount	50.000	Range	49 - 140	Recovery	=	101.340%
62) 4-Bromofluorobenzene	12.483	95	113209	51.019	ug/l	0.00
Spiked Amount	50.000	Range	25 - 144	Recovery	=	102.040%
Target Compounds						
					Qvalue	
16) Acetone	3.954	43	14227	42.668	ug/l	100
25) 2-Butanone	6.990	43	4134	8.611	ug/l #	83
39) Methylcyclohexane	9.185	83	12832	3.705	ug/l	99
85) sec-Butylbenzene	13.258	105	71973	7.345	ug/l	98

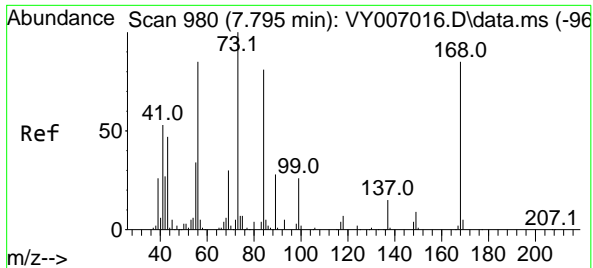
(#) = qualifier out of range (m) = manual integration (+) = signals summed

Data Path : Z:\voasrv\HPCHEM1\MSVOA_Y\Data\VY010622\
 Data File : VY007043.D
 Acq On : 06 Jan 2022 19:26
 Operator : SY/MD
 Sample : N1051-02
 Misc : 7.07g/5.0mL/MSVOA_Y/SOIL
 ALS Vial : 23 Sample Multiplier: 1

Instrument :
 MSVOA_Y
 ClientSampleId :
 SB-2-(9-9.5)

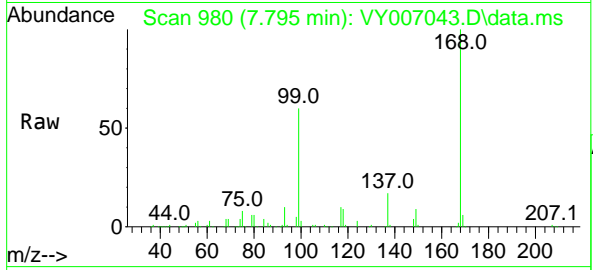
Quant Time: Jan 07 11:49:20 2022
 Quant Method : Z:\voasrv\HPCHEM1\MSVOA_Y\methods\82Y010522S.M
 Quant Title : SW846 8260
 QLast Update : Thu Jan 06 04:51:57 2022
 Response via : Initial Calibration



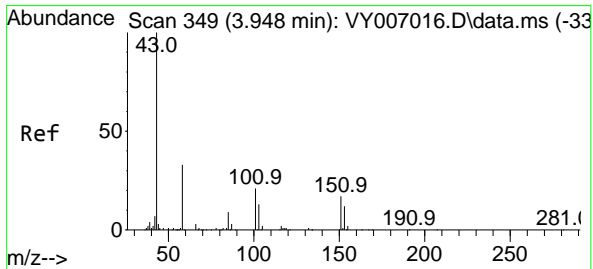
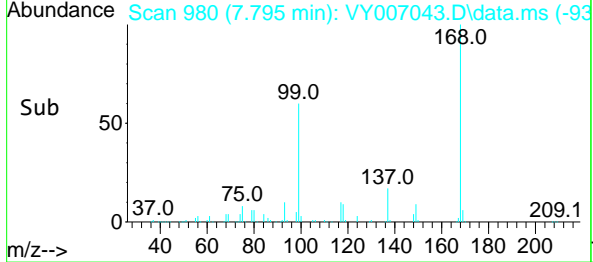
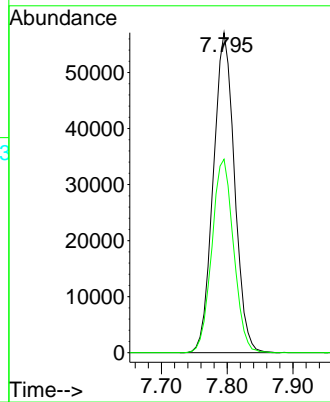


#1
 Pentafluorobenzene
 Concen: 50.000 ug/l
 RT: 7.795 min Scan# 91
 Delta R.T. 0.000 min
 Lab File: VY007043.D
 Acq: 06 Jan 2022 19:26

Instrument :
 MSVOA_Y
 ClientSampleId :
 SB-2-(9-9.5)

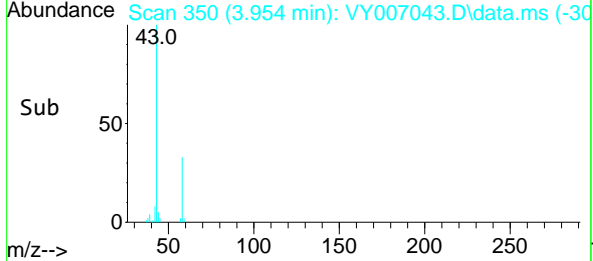
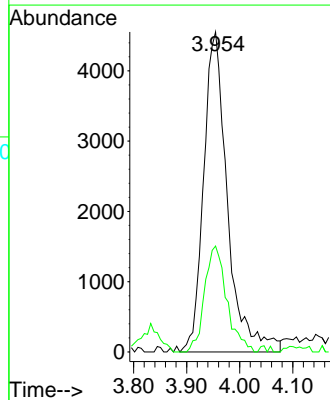
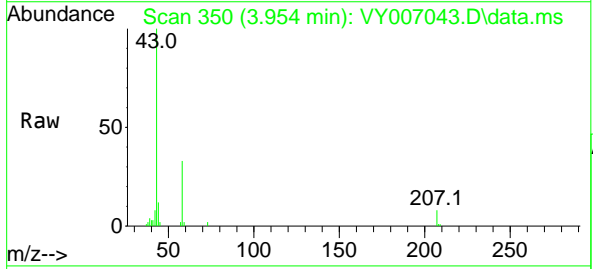


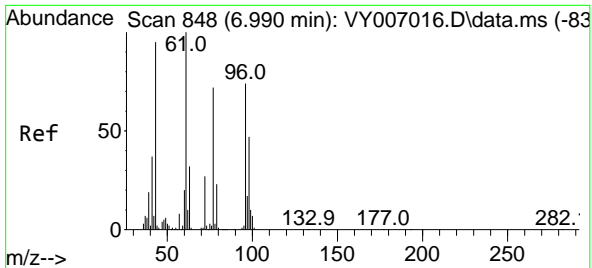
Tgt Ion:168 Resp: 128215
 Ion Ratio Lower Upper
 168 100
 99 60.4 48.9 73.3



#16
 Acetone
 Concen: 42.668 ug/l
 RT: 3.954 min Scan# 350
 Delta R.T. 0.006 min
 Lab File: VY007043.D
 Acq: 06 Jan 2022 19:26

Tgt Ion: 43 Resp: 14227
 Ion Ratio Lower Upper
 43 100
 58 33.1 26.3 39.5

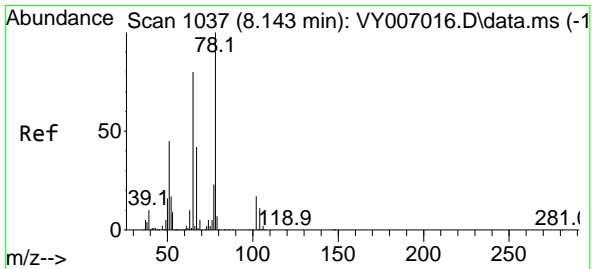
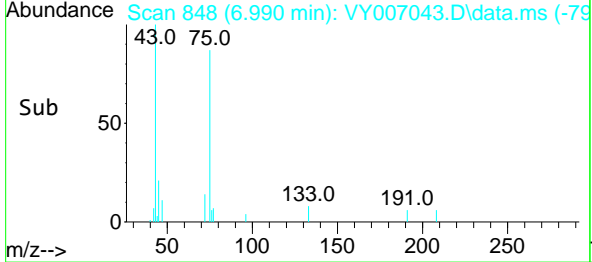
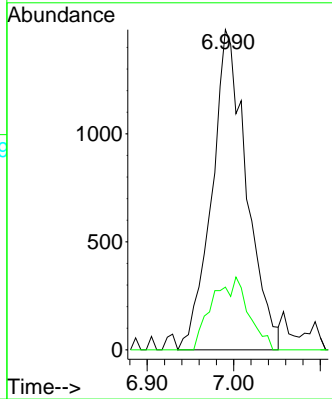
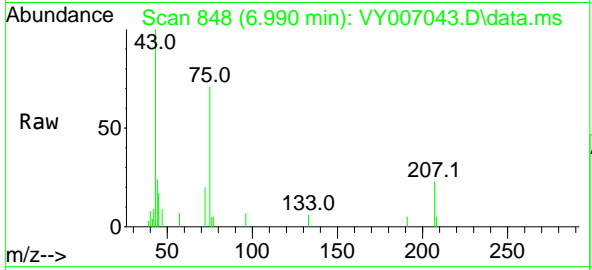




#25
 2-Butanone
 Concen: 8.611 ug/l
 RT: 6.990 min Scan# 84
 Delta R.T. 0.000 min
 Lab File: VY007043.D
 Acq: 06 Jan 2022 19:26

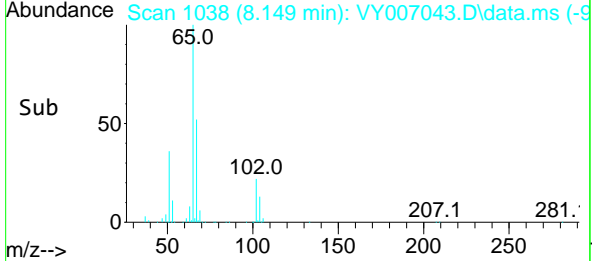
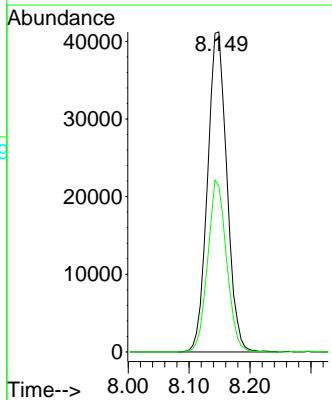
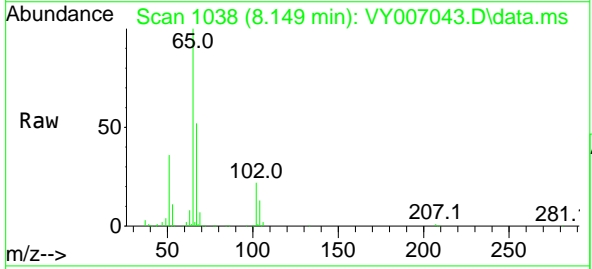
Instrument :
 MSVOA_Y
 ClientSampleId :
 SB-2-(9-9.5)

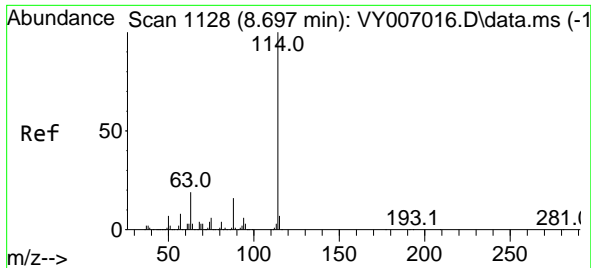
Tgt Ion: 43 Resp: 4134
 Ion Ratio Lower Upper
 43 100
 72 19.6 22.6 34.0#



#33
 1,2-Dichloroethane-d4
 Concen: 60.125 ug/l
 RT: 8.149 min Scan# 1038
 Delta R.T. 0.006 min
 Lab File: VY007043.D
 Acq: 06 Jan 2022 19:26

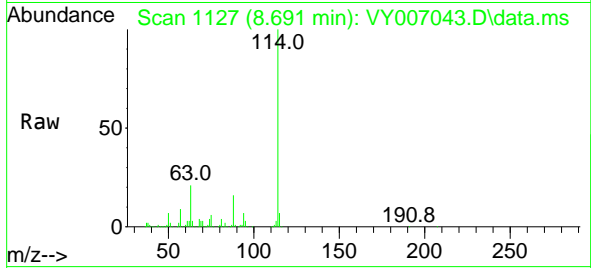
Tgt Ion: 65 Resp: 90998
 Ion Ratio Lower Upper
 65 100
 67 52.4 0.0 105.8





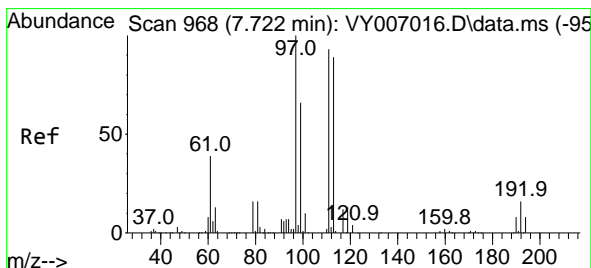
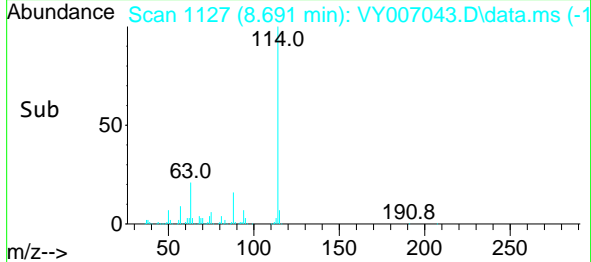
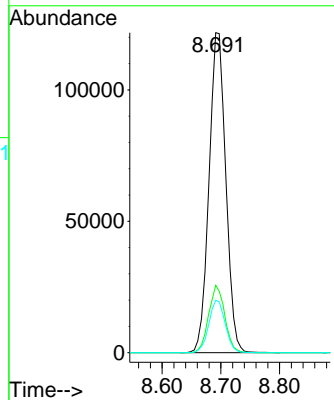
#34
 1,4-Difluorobenzene
 Concen: 50.000 ug/l
 RT: 8.691 min Scan# 1127
 Delta R.T. -0.006 min
 Lab File: VY007043.D
 Acq: 06 Jan 2022 19:26

Instrument : MSVOA_Y
 ClientSampleId : SB-2-(9-9.5)



Tgt Ion:114 Resp: 241242

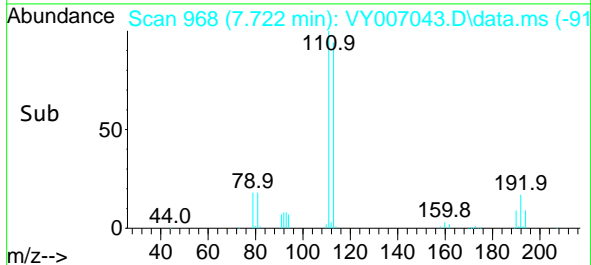
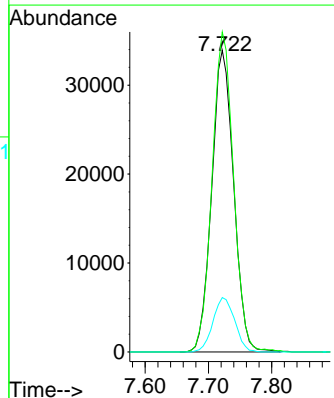
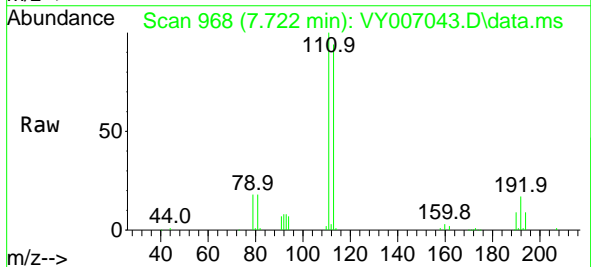
Ion	Ratio	Lower	Upper
114	100		
63	21.0	0.0	37.6
88	16.4	0.0	31.8

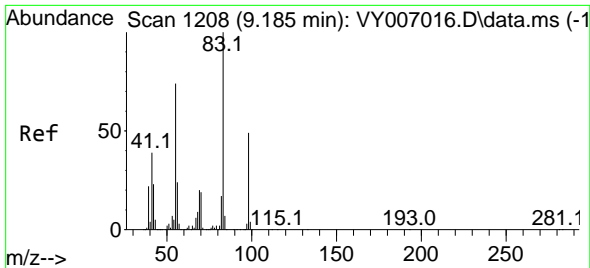


#35
 Dibromofluoromethane
 Concen: 51.342 ug/l
 RT: 7.722 min Scan# 968
 Delta R.T. 0.000 min
 Lab File: VY007043.D
 Acq: 06 Jan 2022 19:26

Tgt Ion:113 Resp: 81418

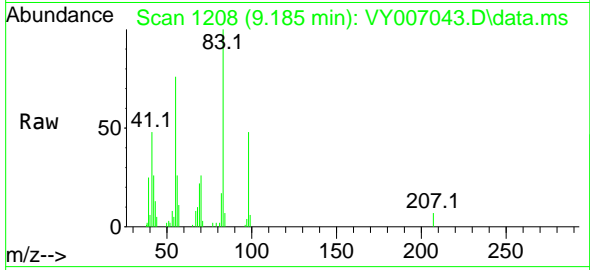
Ion	Ratio	Lower	Upper
113	100		
111	104.0	81.9	122.9
192	17.9	14.6	21.8



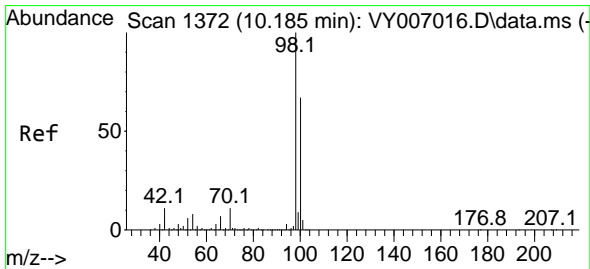
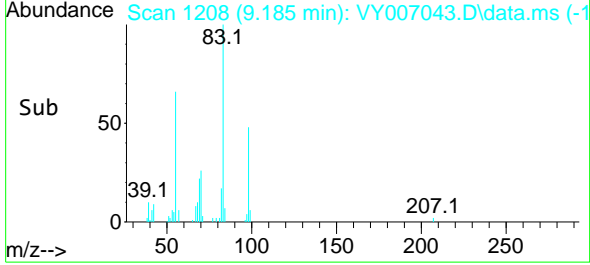
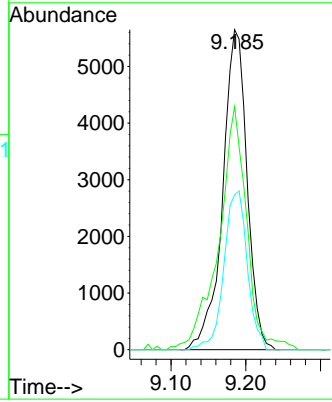


#39
 Methylcyclohexane
 Concen: 3.705 ug/l
 RT: 9.185 min Scan# 11
 Delta R.T. 0.000 min
 Lab File: VY007043.D
 Acq: 06 Jan 2022 19:26

Instrument :
 MSVOA_Y
 ClientSampleId :
 SB-2-(9-9.5)

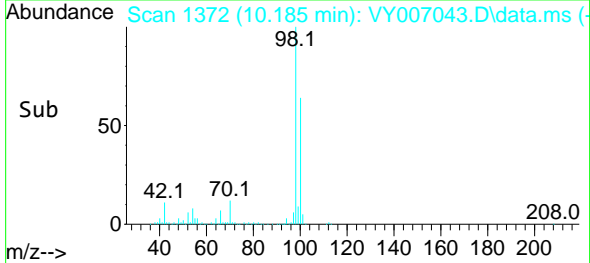
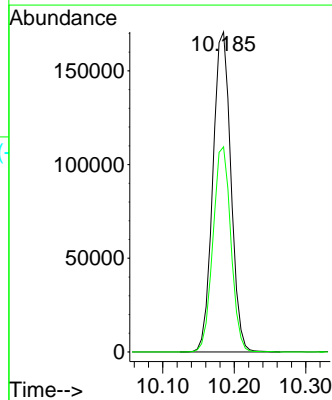
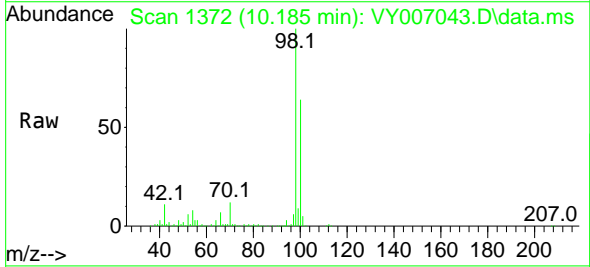


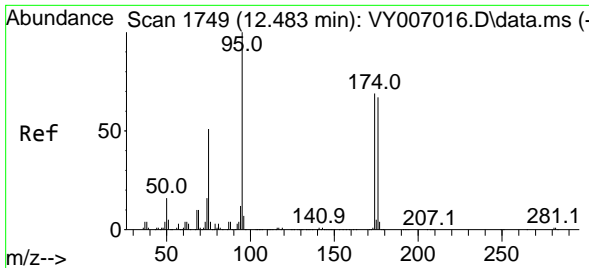
Tgt Ion: 83 Resp: 12832
 Ion Ratio Lower Upper
 83 100
 55 74.1 59.0 88.6
 98 48.4 39.1 58.7



#50
 Toluene-d8
 Concen: 50.671 ug/l
 RT: 10.185 min Scan# 1372
 Delta R.T. 0.000 min
 Lab File: VY007043.D
 Acq: 06 Jan 2022 19:26

Tgt Ion: 98 Resp: 298549
 Ion Ratio Lower Upper
 98 100
 100 63.8 52.8 79.2



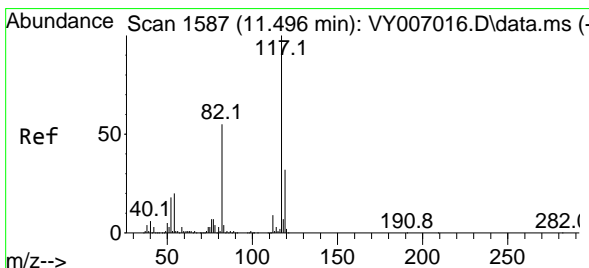
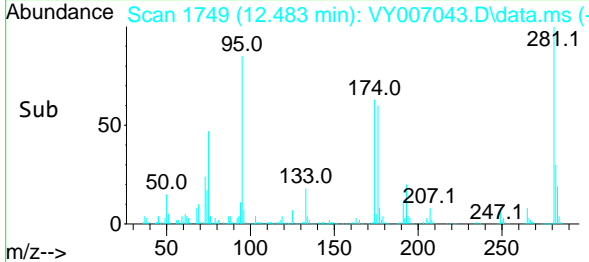
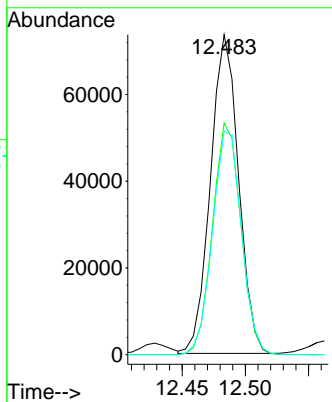
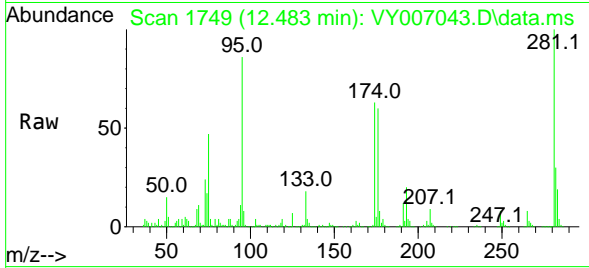


#62
 4-Bromofluorobenzene
 Concen: 51.019 ug/l
 RT: 12.483 min Scan# 11
 Delta R.T. 0.000 min
 Lab File: VY007043.D
 Acq: 06 Jan 2022 19:26

Instrument : MSVOA_Y
 ClientSampleId : SB-2-(9-9.5)

Tgt Ion: 95 Resp: 113209

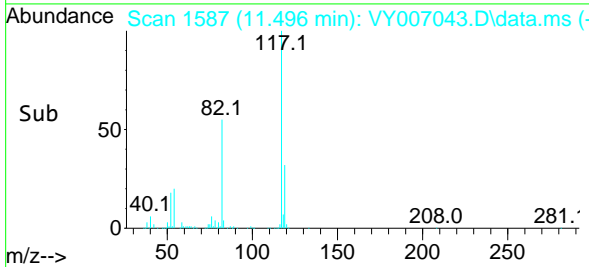
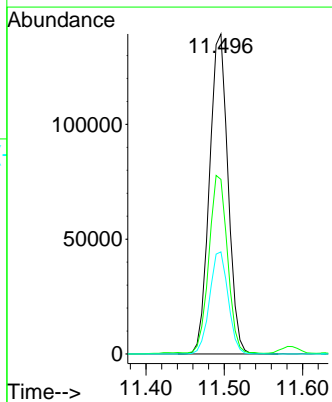
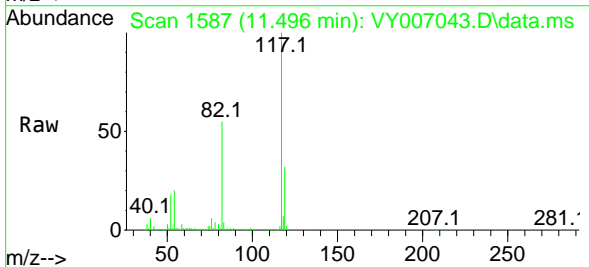
Ion	Ratio	Lower	Upper
95	100		
174	73.5	0.0	144.6
176	72.7	0.0	141.0

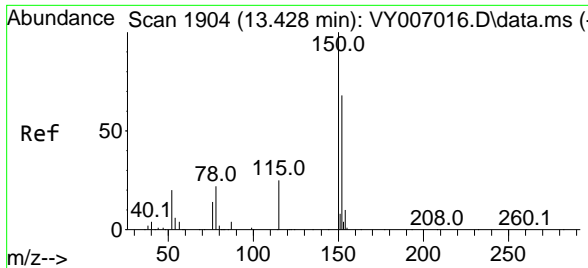


#63
 Chlorobenzene-d5
 Concen: 50.000 ug/l
 RT: 11.496 min Scan# 1587
 Delta R.T. 0.000 min
 Lab File: VY007043.D
 Acq: 06 Jan 2022 19:26

Tgt Ion: 117 Resp: 228924

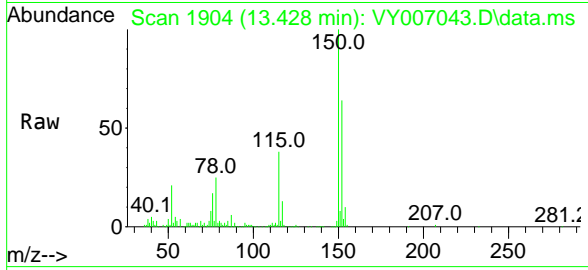
Ion	Ratio	Lower	Upper
117	100		
82	54.1	44.1	66.1
119	31.9	25.3	37.9





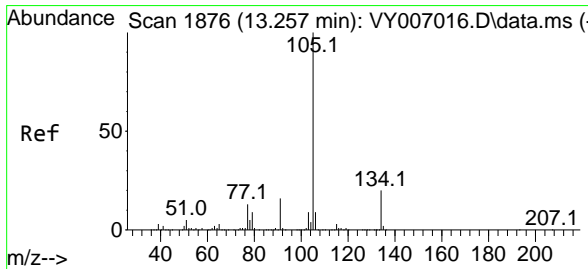
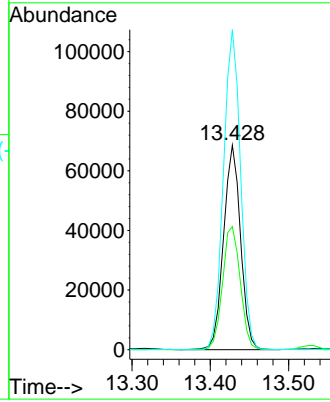
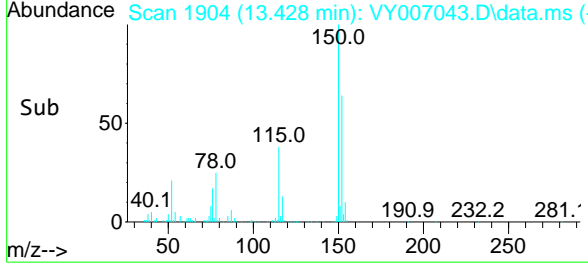
#72
 1,4-Dichlorobenzene-d4
 Concen: 50.000 ug/l
 RT: 13.428 min Scan# 1904
 Delta R.T. 0.000 min
 Lab File: VY007043.D
 Acq: 06 Jan 2022 19:26

Instrument : MSVOA_Y
 ClientSampleId : SB-2-(9-9.5)

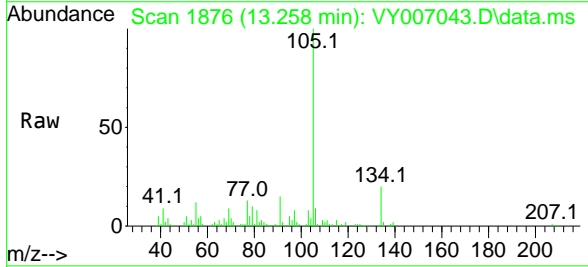


Tgt Ion:152 Resp: 103864

Ion	Ratio	Lower	Upper
152	100		
115	62.5	31.9	95.5
150	156.9	0.0	358.0



#85
 sec-Butylbenzene
 Concen: 7.345 ug/l
 RT: 13.258 min Scan# 1876
 Delta R.T. 0.000 min
 Lab File: VY007043.D
 Acq: 06 Jan 2022 19:26



Tgt Ion:105 Resp: 71973

Ion	Ratio	Lower	Upper
105	100		
134	20.9	10.0	29.8

