

Data Path : Z:\voasrv\HPCHEM1\MSVOA_Y\Data\VY010824\
 Data File : VY016937.D
 Acq On : 08 Jan 2024 16:50
 Operator : SY/MD
 Sample : P1055-07RE
 Misc : 5.08g/5.0mL/MSVOA_Y/SOIL/B
 ALS Vial : 14 Sample Multiplier: 1

Instrument :
 MSVOA_Y
 ClientSampleId :

Quant Time: Jan 09 06:37:00 2024
 Quant Method : Z:\voasrv\HPCHEM1\MSVOA_Y\methods\82Y010224S.M
 Quant Title : SW846 8260
 QLast Update : Tue Jan 02 14:25:32 2024
 Response via : Initial Calibration

Compound	R.T.	QIon	Response	Conc	Units	Dev(Min)

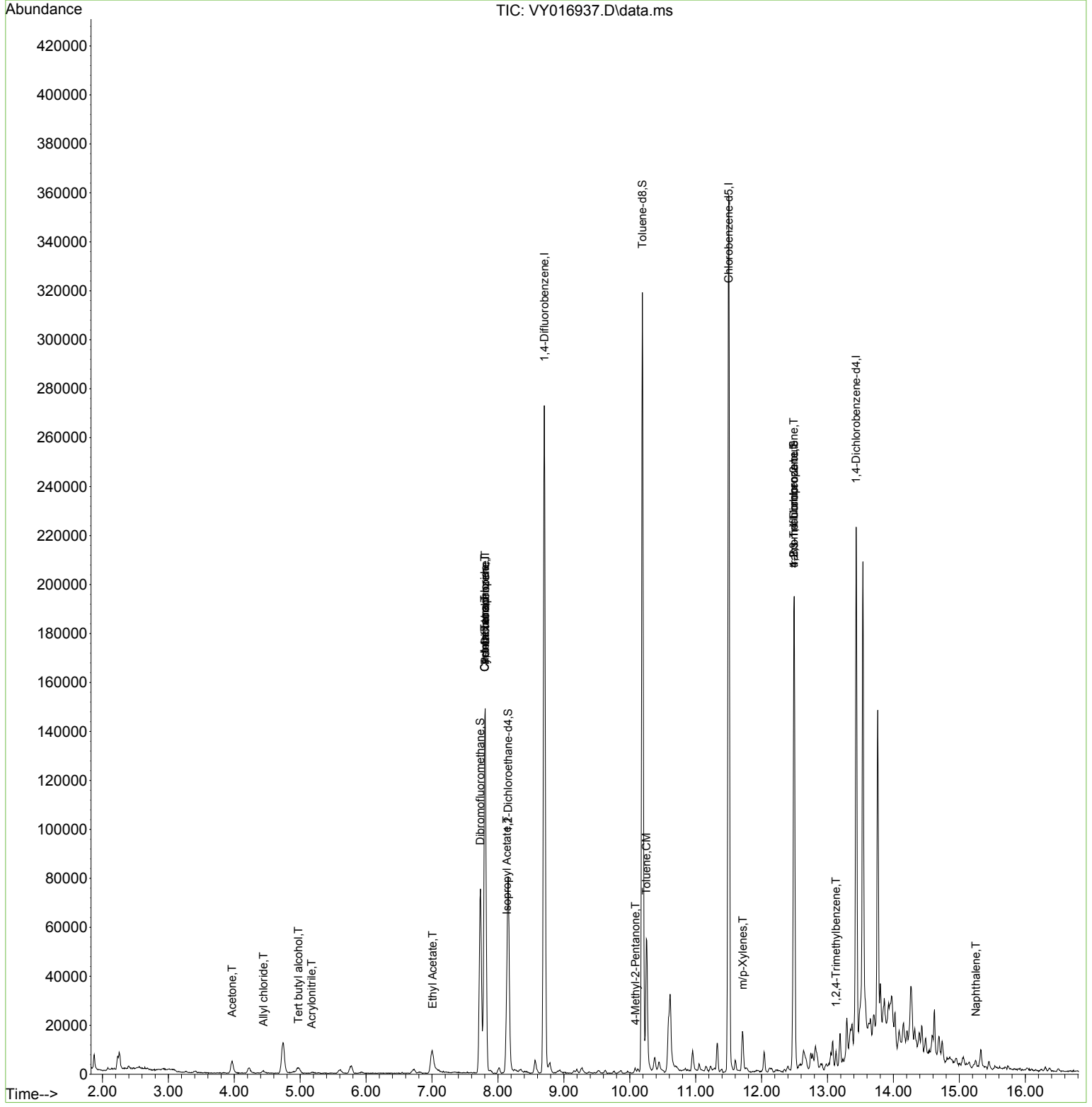
Internal Standards						
1) Pentafluorobenzene	7.807	168	109899	50.000	ug/l	0.00
34) 1,4-Difluorobenzene	8.703	114	230378	50.000	ug/l	0.00
63) Chlorobenzene-d5	11.502	117	194749	50.000	ug/l	0.00
72) 1,4-Dichlorobenzene-d4	13.434	152	50746	50.000	ug/l	0.00
System Monitoring Compounds						
33) 1,2-Dichloroethane-d4	8.155	65	50027	46.057	ug/l	0.00
Spiked Amount	50.000	Range	50 - 163	Recovery	=	92.120%
35) Dibromofluoromethane	7.734	113	54727	37.279	ug/l	0.00
Spiked Amount	50.000	Range	54 - 147	Recovery	=	74.560%
50) Toluene-d8	10.191	98	197757	39.119	ug/l	0.00
Spiked Amount	50.000	Range	58 - 134	Recovery	=	78.240%
62) 4-Bromofluorobenzene	12.489	95	53961	31.638	ug/l	0.00
Spiked Amount	50.000	Range	30 - 143	Recovery	=	63.280%
Target Compounds						
					Qvalue	
2) Dichlorodifluoromethane	1.924	85	57	Below Cal	#	40
11) Tert butyl alcohol	4.972	59	4528	27.790	ug/l #	94
14) Allyl chloride	4.442	41	1715	1.036	ug/l #	31
15) Acrylonitrile	5.173	53	305	1.087	ug/l #	50
16) Acetone	3.966	43	8983	10.422	ug/l	93
20) Methylene Chloride	4.741	84	9710	Below Cal		92
25) 2-Butanone	7.009	43	2800	Below Cal	#	89
31) Cyclohexane	7.801	56	5339	2.864	ug/l #	72
36) 1,1-Dichloropropene	7.807	75	9878	4.617	ug/l #	49
37) Ethyl Acetate	7.009	43	2800	2.880	ug/l #	83
38) Carbon Tetrachloride	7.801	117	10672	4.910	ug/l #	18
43) Isopropyl Acetate	8.136	43	16497	8.860	ug/l #	60
51) 4-Methyl-2-Pentanone	10.087	43	1573	1.589	ug/l	92
52) Toluene	10.252	92	21939	5.664	ug/l	99
68) m/p-Xylenes	11.715	106	4597	1.715	ug/l	94
76) 1,2,3-Trichloropropane	12.489	75	28850	52.389	ug/l #	100
81) trans-1,4-Dichloro-2-b...	12.489	75	28850	118.963	ug/l #	13
84) 1,2,4-Trimethylbenzene	13.129	105	3994	1.237	ug/l	100
95) Naphthalene	15.251	128	2619	2.596	ug/l	98

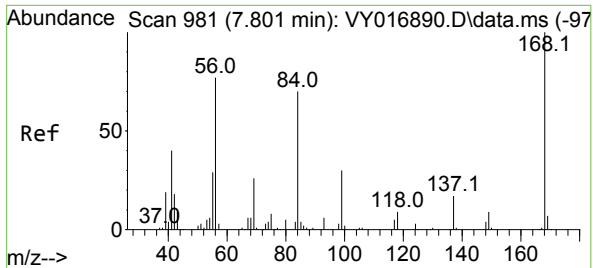
(#) = qualifier out of range (m) = manual integration (+) = signals summed

Data Path : Z:\voasrv\HPCHEM1\MSVOA_Y\Data\VY010824\
 Data File : VY016937.D
 Acq On : 08 Jan 2024 16:50
 Operator : SY/MD
 Sample : P1055-07RE
 Misc : 5.08g/5.0mL/MSVOA_Y/SOIL/B
 ALS Vial : 14 Sample Multiplier: 1

Instrument :
 MSVOA_Y
 ClientSampleId :

Quant Time: Jan 09 06:37:00 2024
 Quant Method : Z:\voasrv\HPCHEM1\MSVOA_Y\methods\82Y010224S.M
 Quant Title : SW846 8260
 QLast Update : Tue Jan 02 14:25:32 2024
 Response via : Initial Calibration

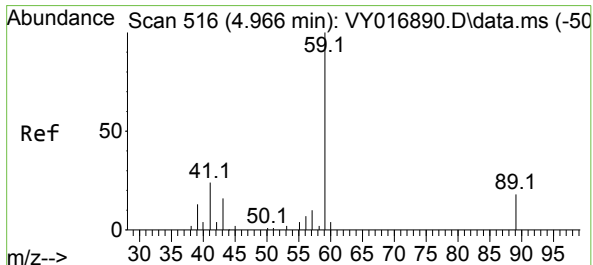
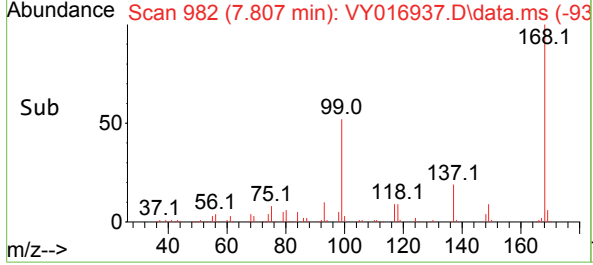
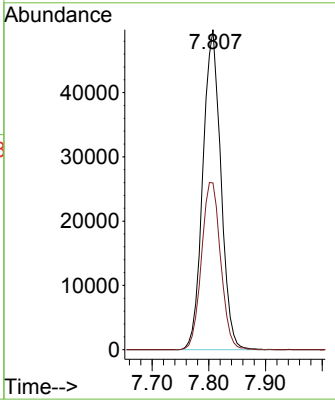
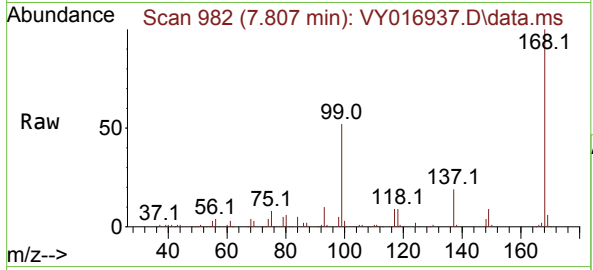




#1
 Pentafluorobenzene
 Concen: 50.000 ug/l
 RT: 7.807 min Scan# 99
 Delta R.T. 0.006 min
 Lab File: VY016937.D
 Acq: 08 Jan 2024 16:50

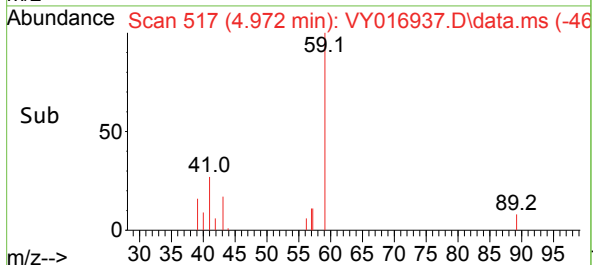
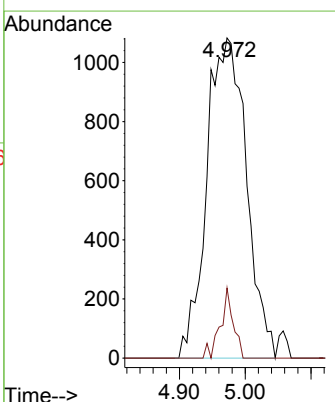
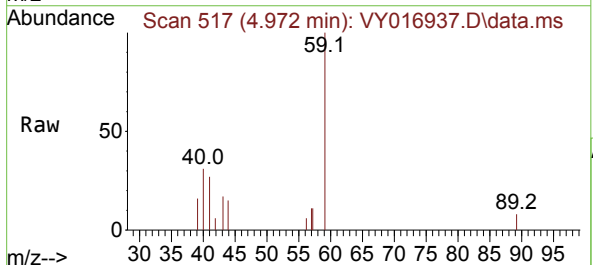
Instrument :
 MSVOA_Y
 ClientSampleId :

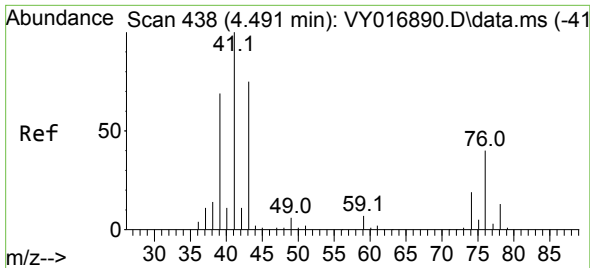
Tgt Ion:168 Resp: 109899
 Ion Ratio Lower Upper
 168 100
 99 52.1 44.2 66.4



#11
 Tert butyl alcohol
 Concen: 27.790 ug/l
 RT: 4.972 min Scan# 517
 Delta R.T. 0.006 min
 Lab File: VY016937.D
 Acq: 08 Jan 2024 16:50

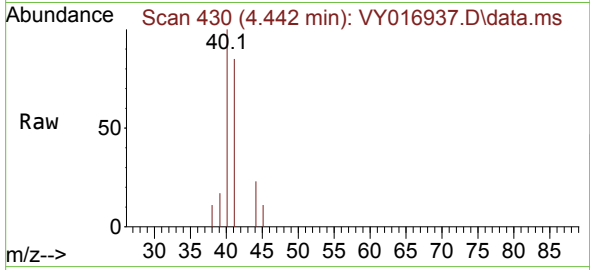
Tgt Ion: 59 Resp: 4528
 Ion Ratio Lower Upper
 59 100
 57 7.2 7.4 11.0#



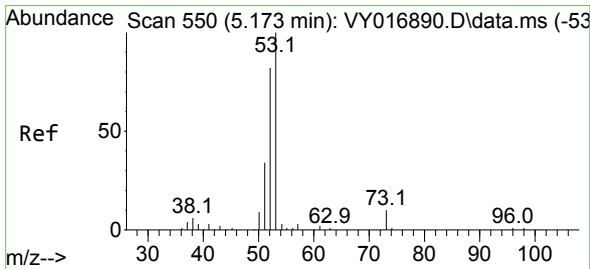
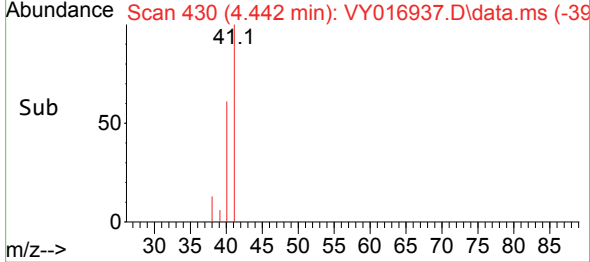
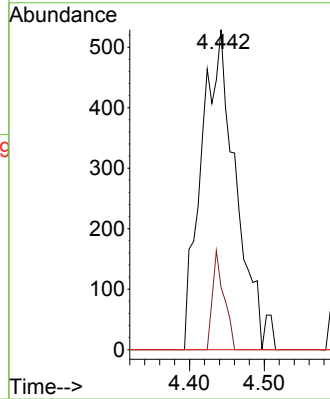


#14
 Allyl chloride
 Concen: 1.036 ug/l
 RT: 4.442 min Scan# 41
 Delta R.T. -0.055 min
 Lab File: VY016937.D
 Acq: 08 Jan 2024 16:50

Instrument :
 MSVOA_Y
 ClientSampleId :

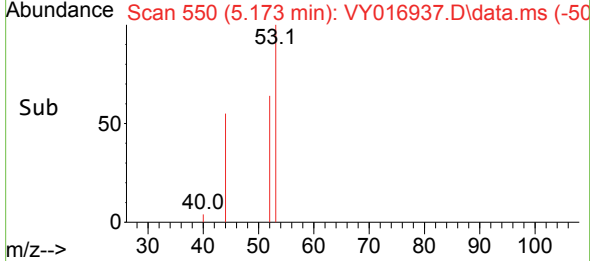
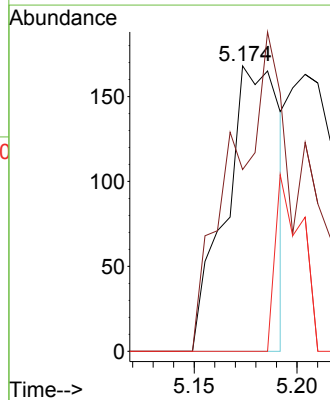
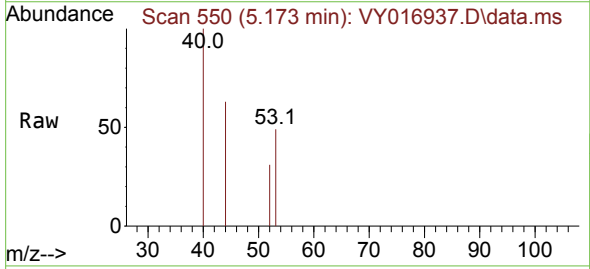


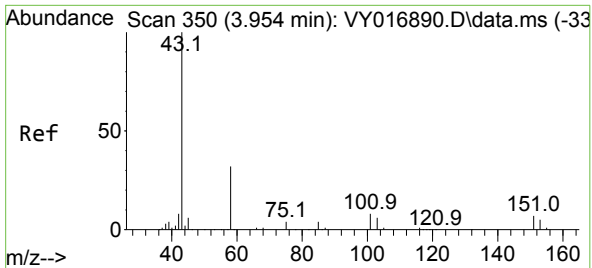
Tgt Ion	Resp	Lower	Upper
41	1715		
41	100		
39	10.2	54.7	82.1#
76	0.0	31.8	47.6#



#15
 Acrylonitrile
 Concen: 1.087 ug/l
 RT: 5.173 min Scan# 550
 Delta R.T. -0.006 min
 Lab File: VY016937.D
 Acq: 08 Jan 2024 16:50

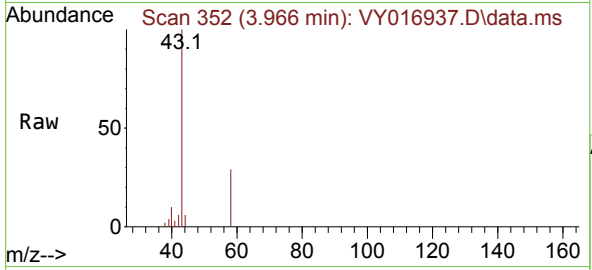
Tgt Ion	Resp	Lower	Upper
53	305		
53	100		
52	141.3	65.1	97.7#
51	30.2	29.0	43.4



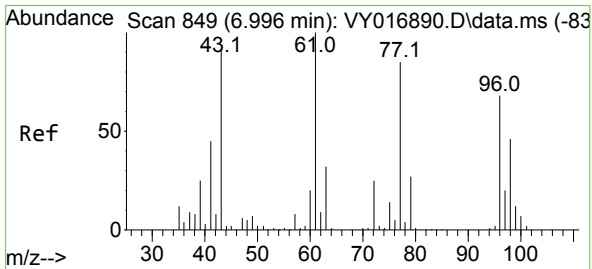
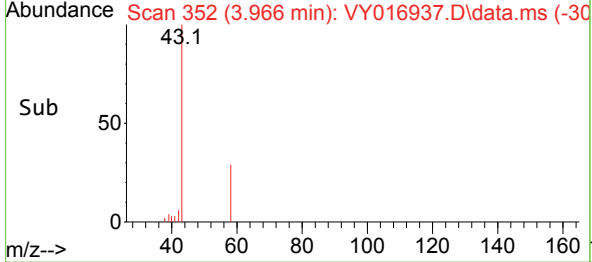
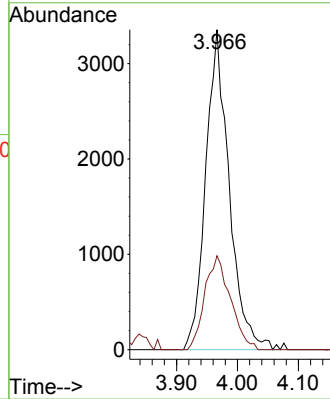


#16
 Acetone
 Concen: 10.422 ug/l
 RT: 3.966 min Scan# 31
 Delta R.T. 0.006 min
 Lab File: VY016937.D
 Acq: 08 Jan 2024 16:50

Instrument :
 MSVOA_Y
 ClientSampleId :

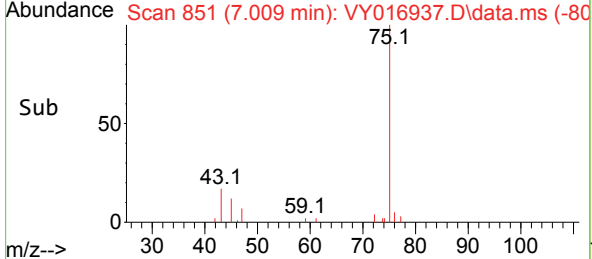
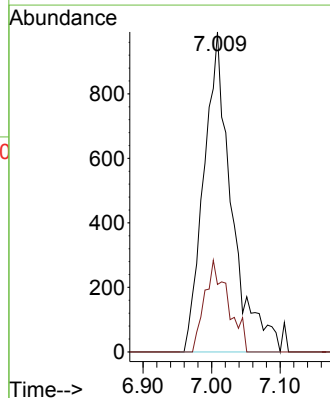
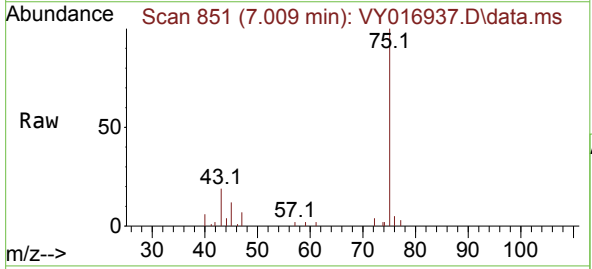


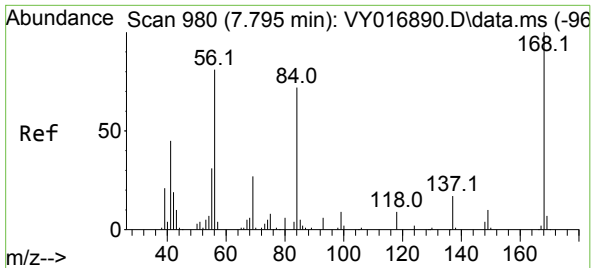
Tgt Ion: 43 Resp: 8983
 Ion Ratio Lower Upper
 43 100
 58 29.4 26.6 39.8



#25
 2-Butanone
 Concen: Below Cal
 RT: 7.009 min Scan# 851
 Delta R.T. 0.013 min
 Lab File: VY016937.D
 Acq: 08 Jan 2024 16:50

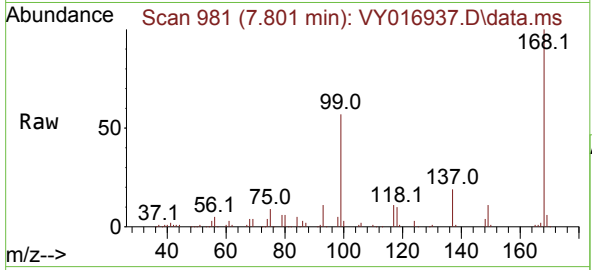
Tgt Ion: 43 Resp: 2800
 Ion Ratio Lower Upper
 43 100
 72 21.1 21.4 32.2#



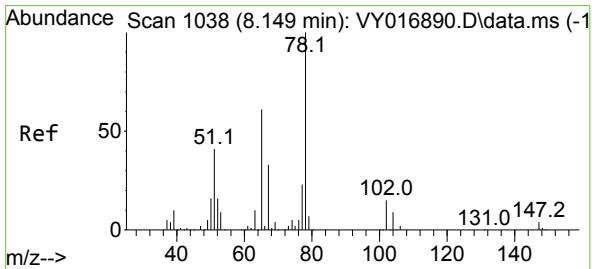
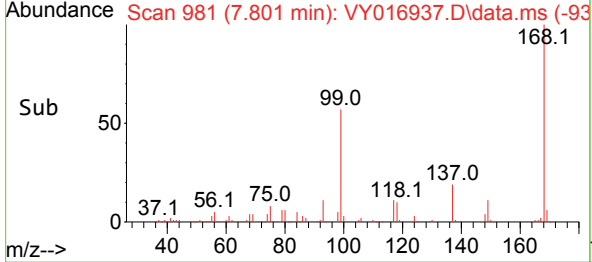
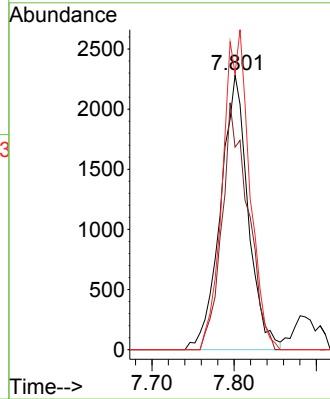


#31
 Cyclohexane
 Concen: 2.864 ug/l
 RT: 7.801 min Scan# 91
 Delta R.T. 0.000 min
 Lab File: VY016937.D
 Acq: 08 Jan 2024 16:50

Instrument :
 MSVOA_Y
 ClientSampleId :

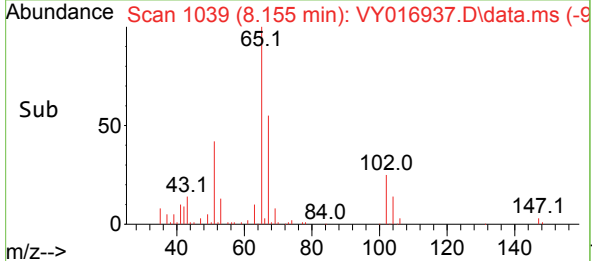
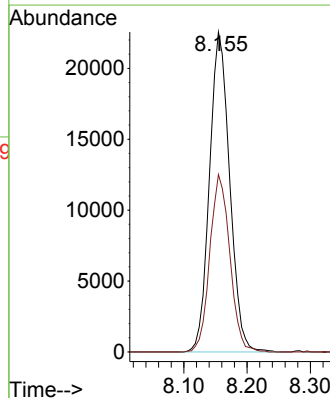
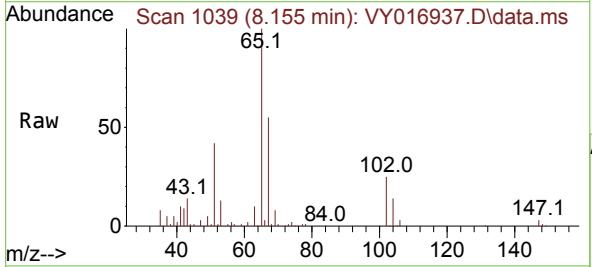


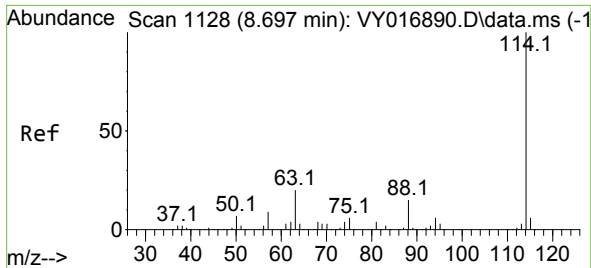
Tgt Ion: 56 Resp: 5339
 Ion Ratio Lower Upper
 56 100
 69 73.8 27.0 40.6#
 84 100.6 71.8 107.6



#33
 1,2-Dichloroethane-d4
 Concen: 46.057 ug/l
 RT: 8.155 min Scan# 1039
 Delta R.T. -0.000 min
 Lab File: VY016937.D
 Acq: 08 Jan 2024 16:50

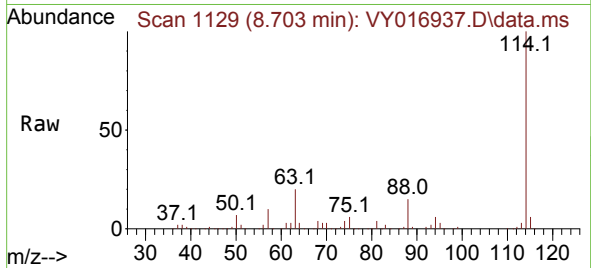
Tgt Ion: 65 Resp: 50027
 Ion Ratio Lower Upper
 65 100
 67 54.9 0.0 109.0



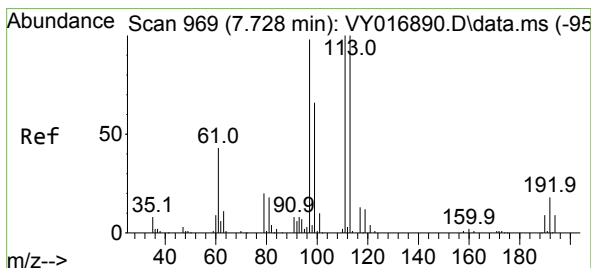
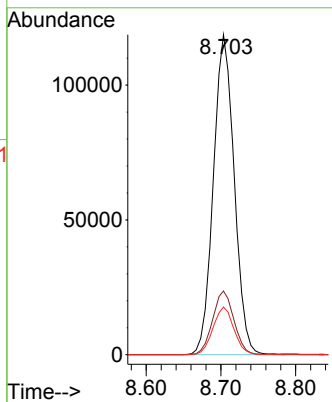
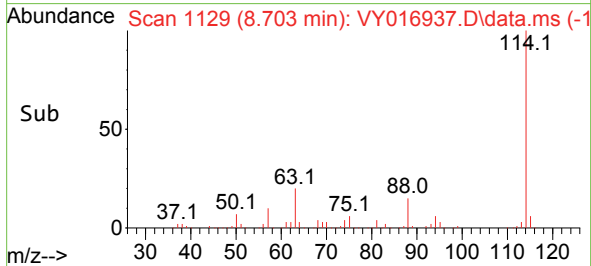


#34
 1,4-Difluorobenzene
 Concen: 50.000 ug/l
 RT: 8.703 min Scan# 1129
 Delta R.T. 0.000 min
 Lab File: VY016937.D
 Acq: 08 Jan 2024 16:50

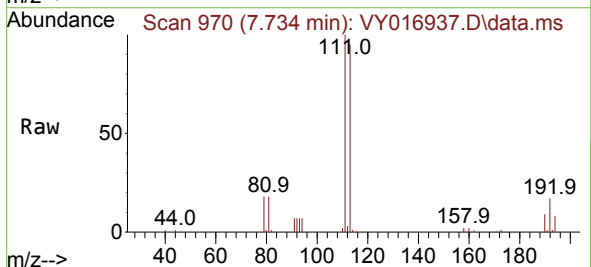
Instrument :
 MSVOA_Y
 ClientSampleId :



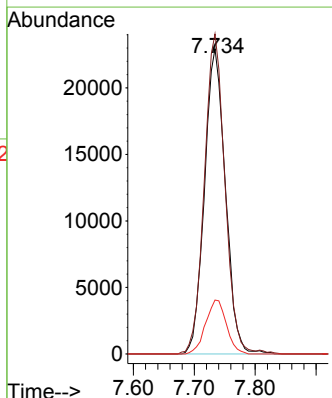
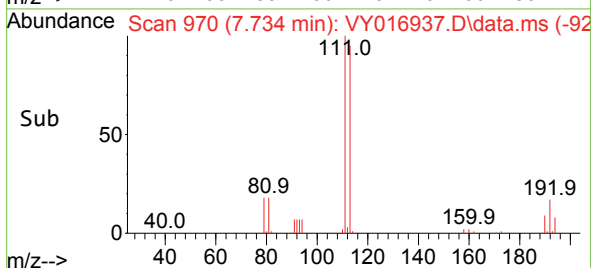
Tgt Ion:114 Resp: 230378
 Ion Ratio Lower Upper
 114 100
 63 19.9 0.0 37.4
 88 14.9 0.0 29.0

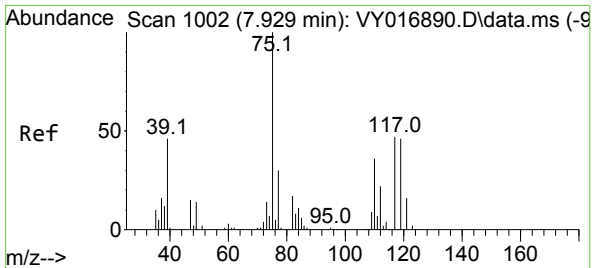


#35
 Dibromofluoromethane
 Concen: 37.279 ug/l
 RT: 7.734 min Scan# 970
 Delta R.T. 0.006 min
 Lab File: VY016937.D
 Acq: 08 Jan 2024 16:50



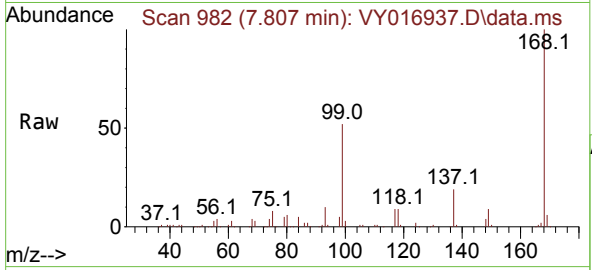
Tgt Ion:113 Resp: 54727
 Ion Ratio Lower Upper
 113 100
 111 103.5 83.8 125.6
 192 17.6 14.5 21.7





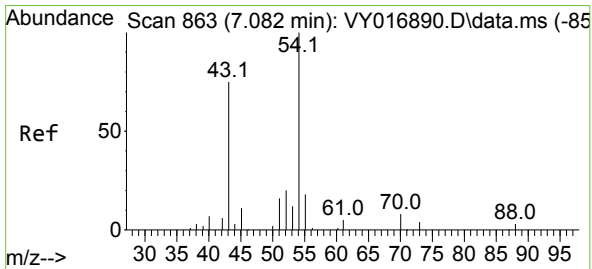
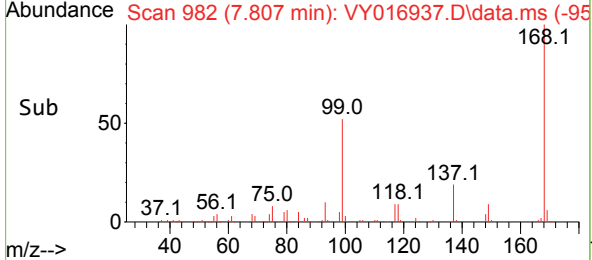
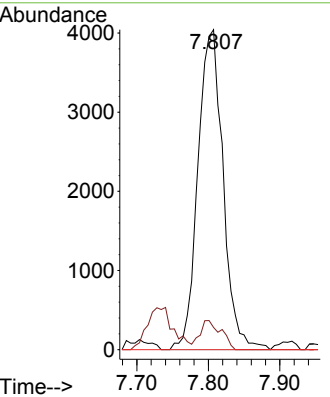
#36
 1,1-Dichloropropene
 Concen: 4.617 ug/l
 RT: 7.807 min Scan# 91
 Delta R.T. -0.122 min
 Lab File: VY016937.D
 Acq: 08 Jan 2024 16:50

Instrument : MSVOA_Y
 ClientSampleId :



Tgt Ion: 75 Resp: 9878

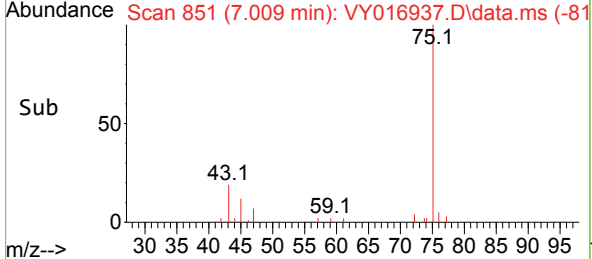
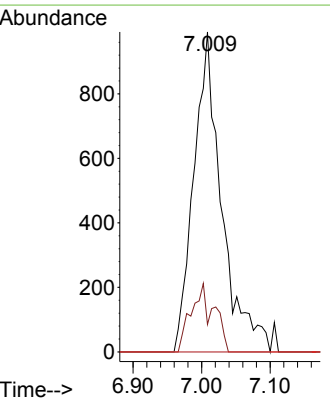
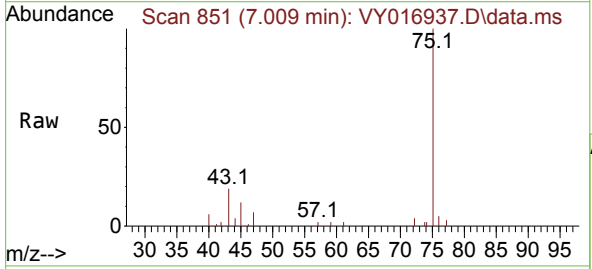
Ion	Ratio	Lower	Upper
75	100		
110	7.6	17.4	52.3#
77	0.0	24.7	37.1#

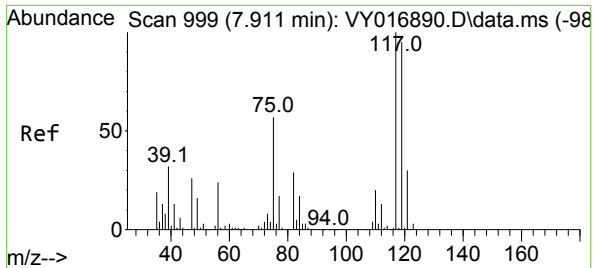


#37
 Ethyl Acetate
 Concen: 2.880 ug/l
 RT: 7.009 min Scan# 851
 Delta R.T. -0.079 min
 Lab File: VY016937.D
 Acq: 08 Jan 2024 16:50

Tgt Ion: 43 Resp: 2800

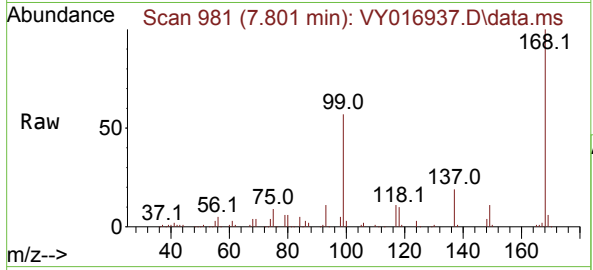
Ion	Ratio	Lower	Upper
43	100		
61	17.5	11.0	16.6#
70	0.0	8.1	12.1#





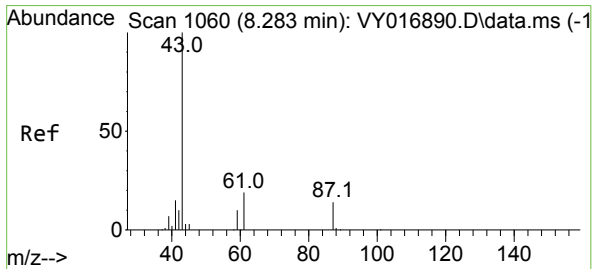
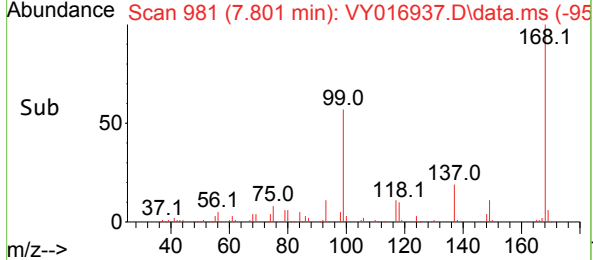
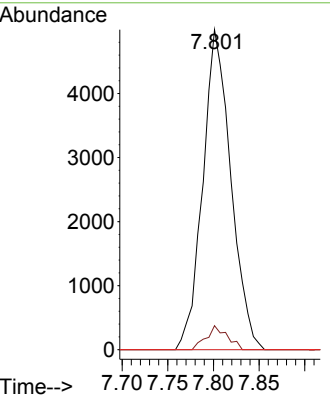
#38
 Carbon Tetrachloride
 Concen: 4.910 ug/l
 RT: 7.801 min Scan# 91
 Delta R.T. -0.116 min
 Lab File: VY016937.D
 Acq: 08 Jan 2024 16:50

Instrument : MSVOA_Y
 ClientSampleId :



Tgt Ion: 117 Resp: 10672

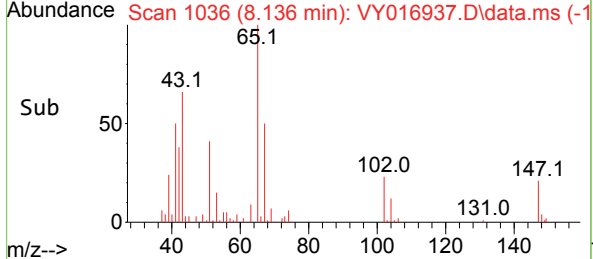
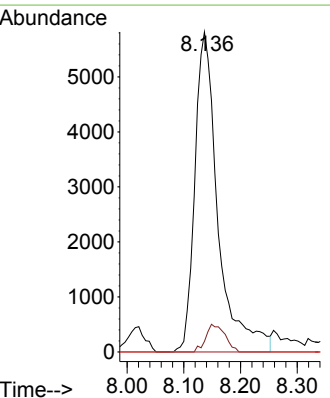
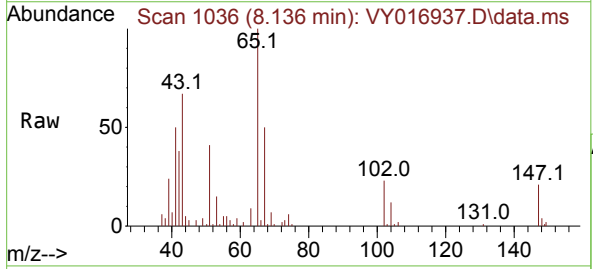
Ion	Ratio	Lower	Upper
117	100		
119	7.5	76.0	114.0#
121	0.0	24.2	36.2#

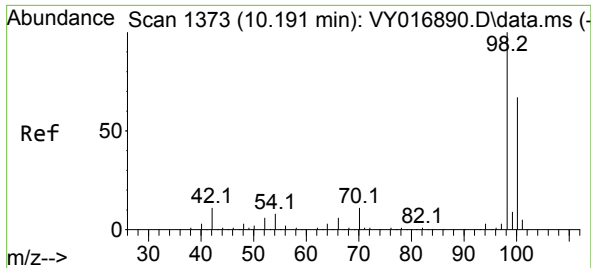


#43
 Isopropyl Acetate
 Concen: 8.860 ug/l
 RT: 8.136 min Scan# 1036
 Delta R.T. -0.147 min
 Lab File: VY016937.D
 Acq: 08 Jan 2024 16:50

Tgt Ion: 43 Resp: 16497

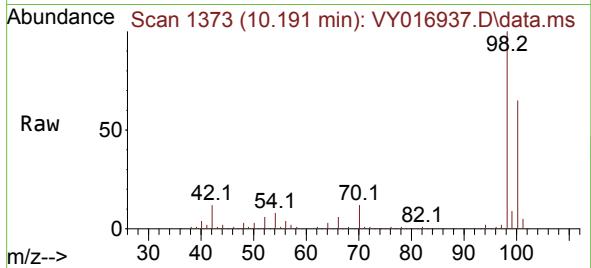
Ion	Ratio	Lower	Upper
43	100		
61	7.1	24.8	37.2#
87	0.0	10.7	16.1#



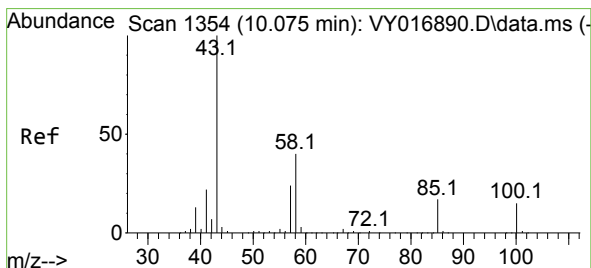
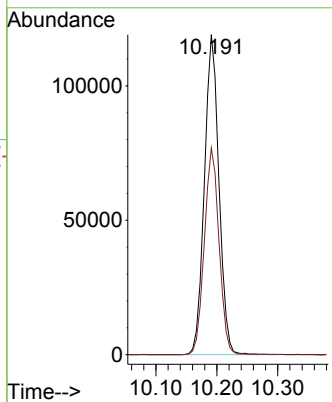
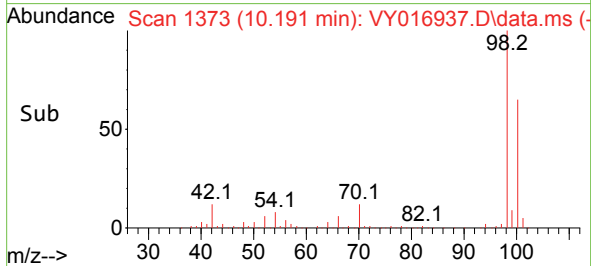


#50
 Toluene-d8
 Concen: 39.119 ug/l
 RT: 10.191 min Scan# 11
 Delta R.T. -0.000 min
 Lab File: VY016937.D
 Acq: 08 Jan 2024 16:50

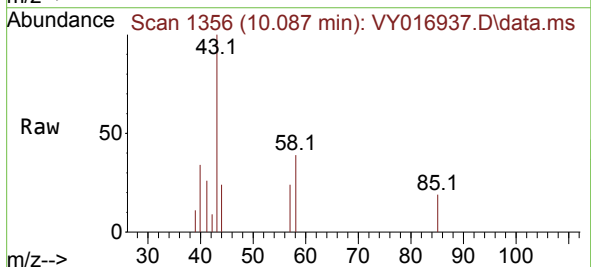
Instrument :
 MSVOA_Y
 ClientSampleId :



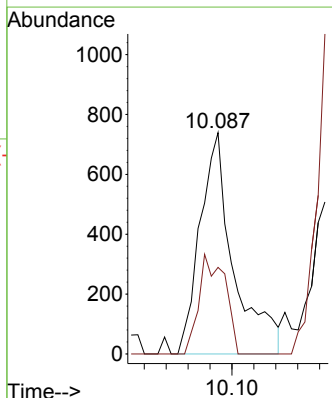
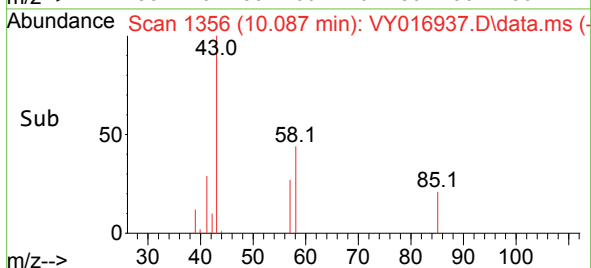
Tgt Ion: 98 Resp: 197757
 Ion Ratio Lower Upper
 98 100
 100 65.3 52.3 78.5

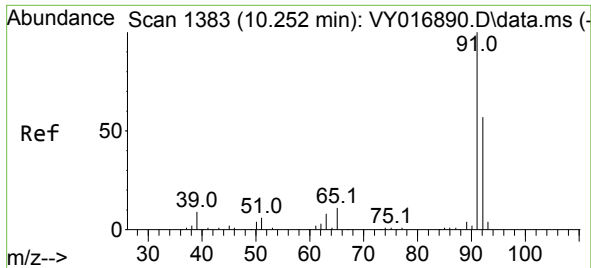


#51
 4-Methyl-2-Pentanone
 Concen: 1.589 ug/l
 RT: 10.087 min Scan# 1356
 Delta R.T. 0.006 min
 Lab File: VY016937.D
 Acq: 08 Jan 2024 16:50



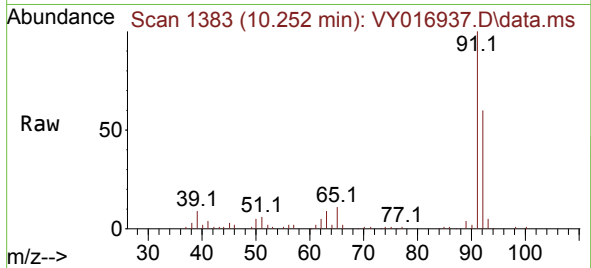
Tgt Ion: 43 Resp: 1573
 Ion Ratio Lower Upper
 43 100
 58 35.0 32.2 48.2



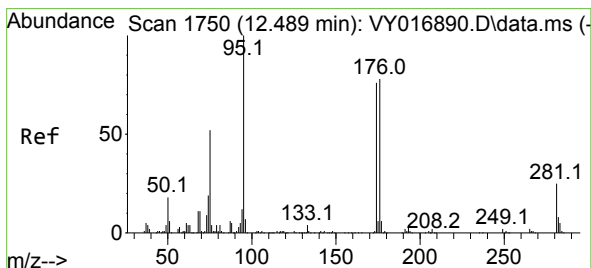
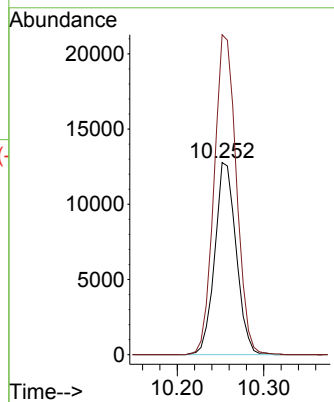
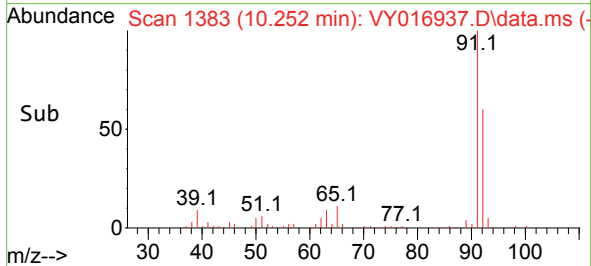


#52
 Toluene
 Concen: 5.664 ug/l
 RT: 10.252 min Scan# 11
 Delta R.T. -0.000 min
 Lab File: VY016937.D
 Acq: 08 Jan 2024 16:50

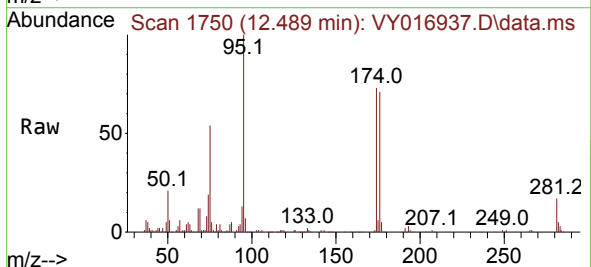
Instrument :
 MSVOA_Y
 ClientSampleId :



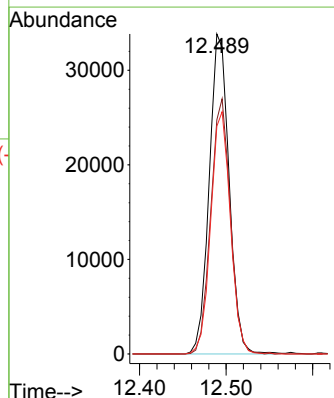
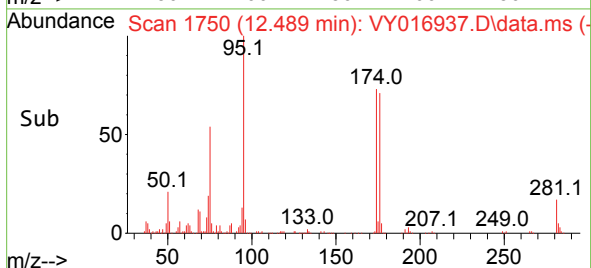
Tgt Ion: 92 Resp: 21939
 Ion Ratio Lower Upper
 92 100
 91 173.1 137.6 206.4

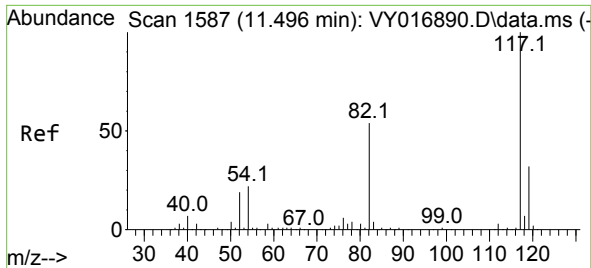


#62
 4-Bromofluorobenzene
 Concen: 31.638 ug/l
 RT: 12.489 min Scan# 1750
 Delta R.T. 0.000 min
 Lab File: VY016937.D
 Acq: 08 Jan 2024 16:50



Tgt Ion: 95 Resp: 53961
 Ion Ratio Lower Upper
 95 100
 174 78.9 0.0 160.0
 176 74.9 0.0 151.8



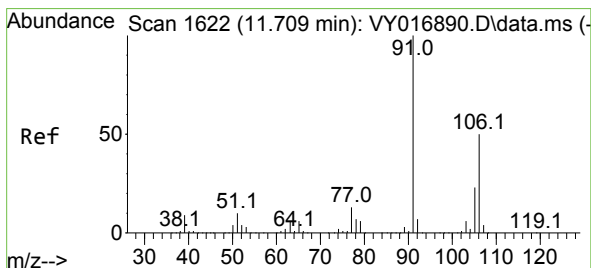
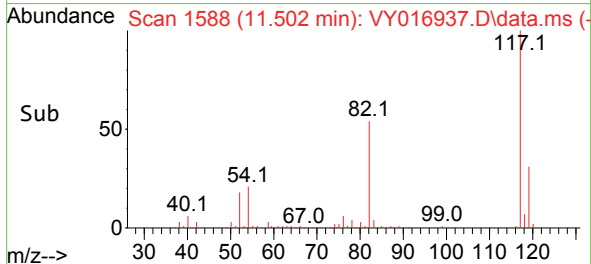
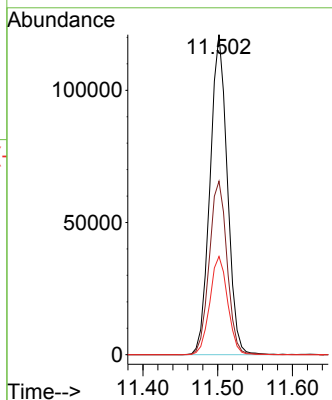
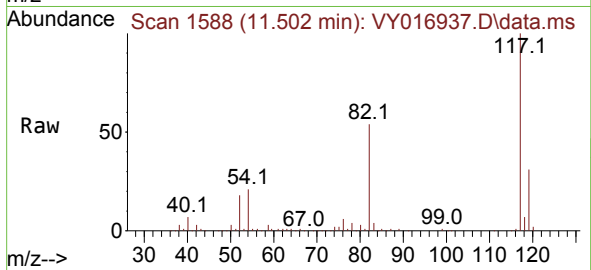


#63
 Chlorobenzene-d5
 Concen: 50.000 ug/l
 RT: 11.502 min Scan# 117
 Delta R.T. -0.000 min
 Lab File: VY016937.D
 Acq: 08 Jan 2024 16:50

Instrument :
 MSVOA_Y
 ClientSampleId :

Tgt Ion:117 Resp: 194749

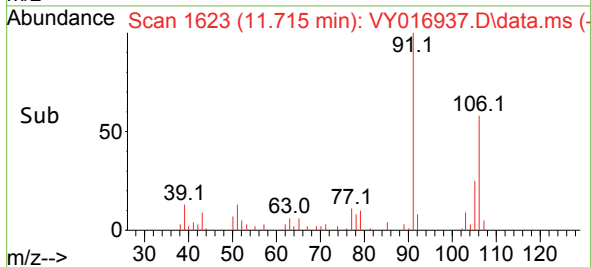
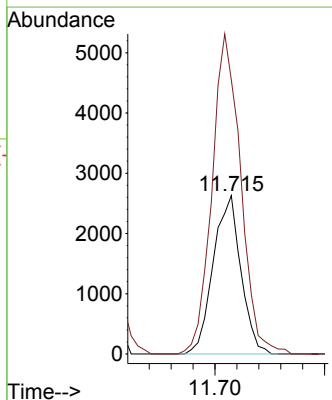
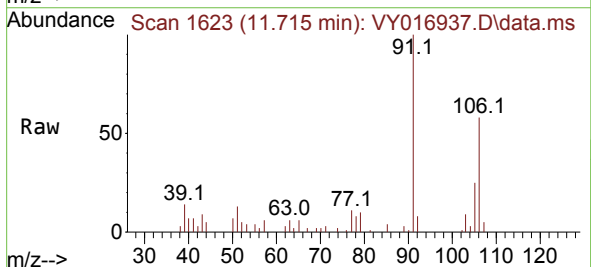
Ion	Ratio	Lower	Upper
117	100		
82	54.2	43.8	65.8
119	30.7	26.5	39.7

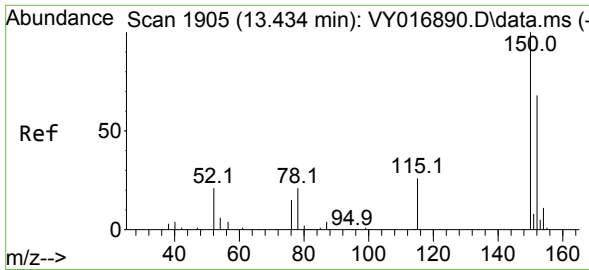


#68
 m/p-Xylenes
 Concen: 1.715 ug/l
 RT: 11.715 min Scan# 1623
 Delta R.T. 0.006 min
 Lab File: VY016937.D
 Acq: 08 Jan 2024 16:50

Tgt Ion:106 Resp: 4597

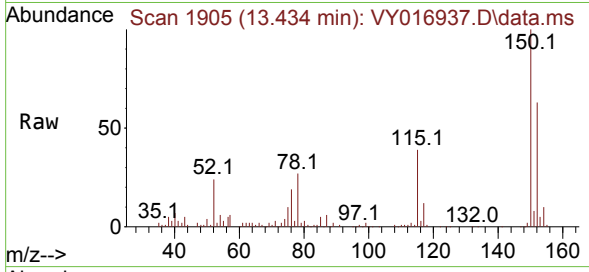
Ion	Ratio	Lower	Upper
106	100		
91	210.0	160.7	241.1



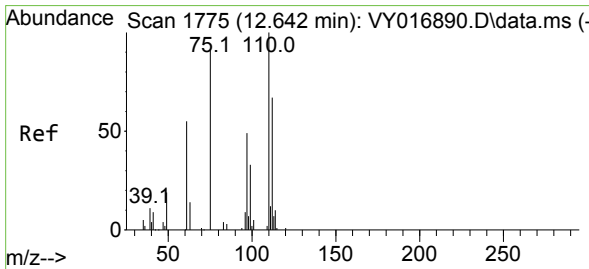
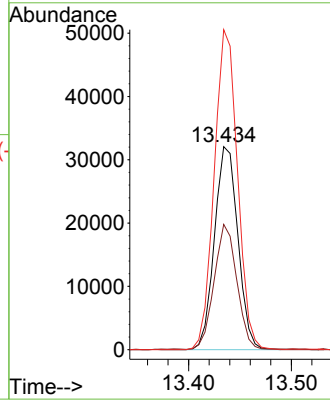
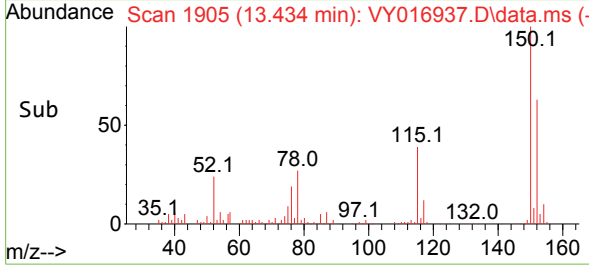


#72
 1,4-Dichlorobenzene-d4
 Concen: 50.000 ug/l
 RT: 13.434 min Scan# 1905
 Delta R.T. 0.000 min
 Lab File: VY016937.D
 Acq: 08 Jan 2024 16:50

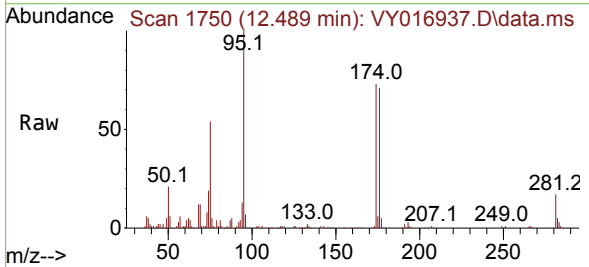
Instrument : MSVOA_Y
 ClientSampleId :



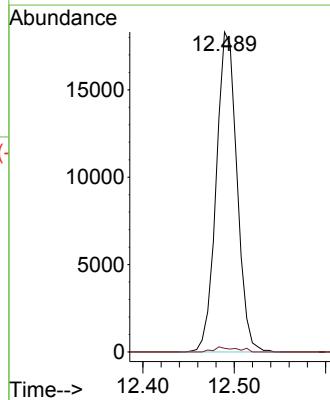
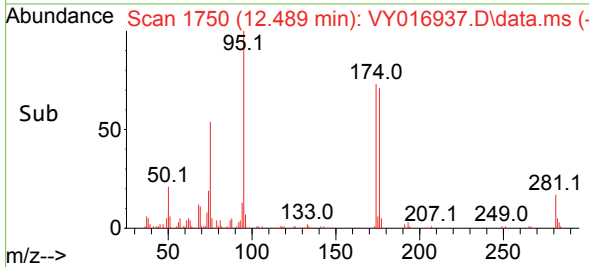
Tgt Ion:152 Resp: 50746
 Ion Ratio Lower Upper
 152 100
 115 60.0 30.0 90.0
 150 156.6 0.0 344.6

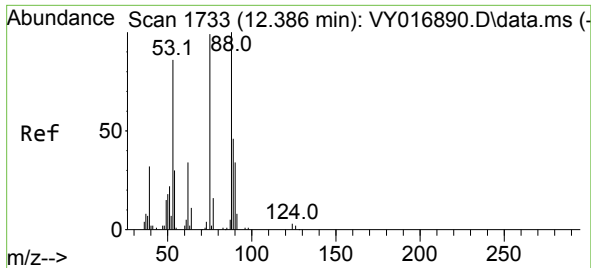


#76
 1,2,3-Trichloropropane
 Concen: 52.389 ug/l
 RT: 12.489 min Scan# 1750
 Delta R.T. -0.153 min
 Lab File: VY016937.D
 Acq: 08 Jan 2024 16:50



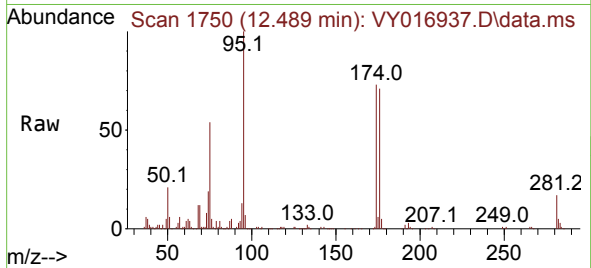
Tgt Ion: 75 Resp: 28850
 Ion Ratio Lower Upper
 75 100
 77 1.7 0.0 0.0#



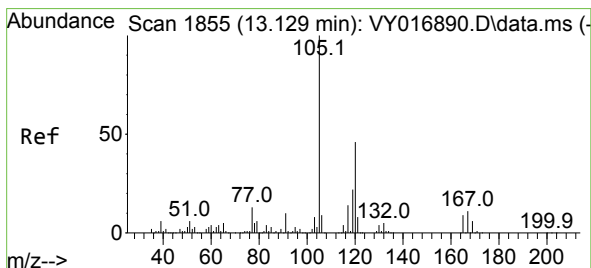
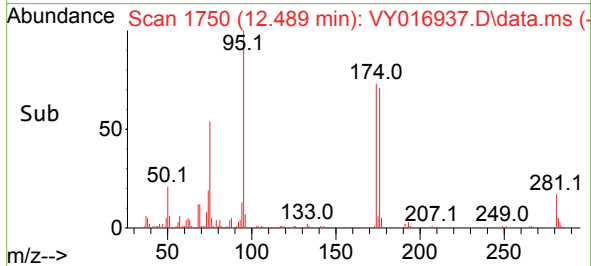
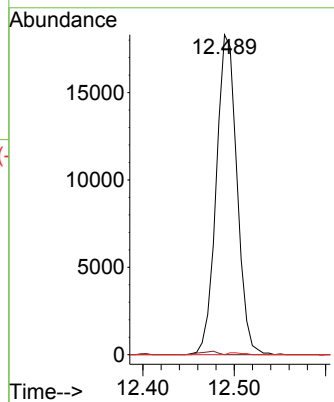


#81
 trans-1,4-Dichloro-2-butene
 Concen: 118.963 ug/l
 RT: 12.489 min Scan# 1750
 Delta R.T. 0.104 min
 Lab File: VY016937.D
 Acq: 08 Jan 2024 16:50

Instrument : MSVOA_Y
 ClientSampleId :

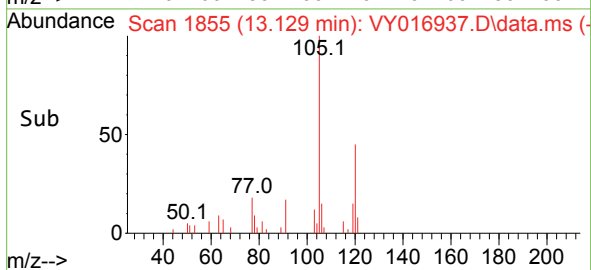
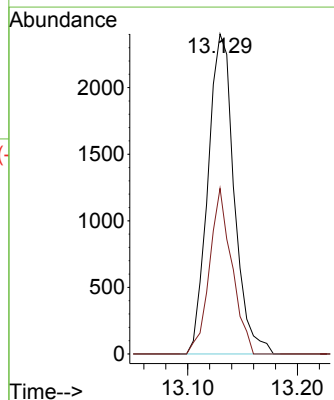
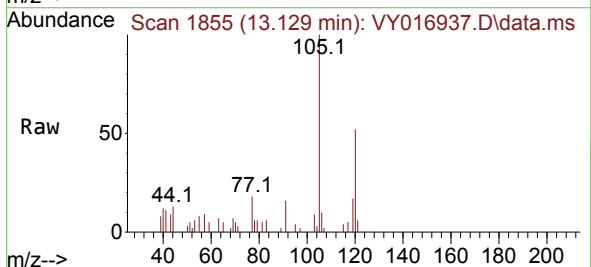


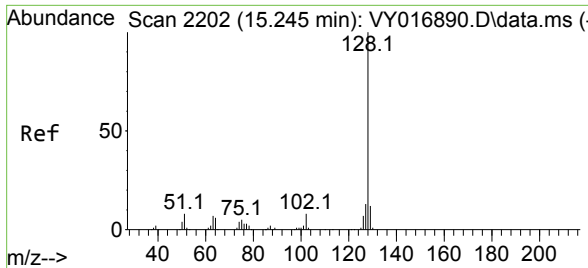
Tgt Ion: 75 Resp: 28850
 Ion Ratio Lower Upper
 75 100
 53 0.8 74.0 111.0#
 89 0.4 36.5 54.7#



#84
 1,2,4-Trimethylbenzene
 Concen: 1.237 ug/l
 RT: 13.129 min Scan# 1855
 Delta R.T. 0.000 min
 Lab File: VY016937.D
 Acq: 08 Jan 2024 16:50

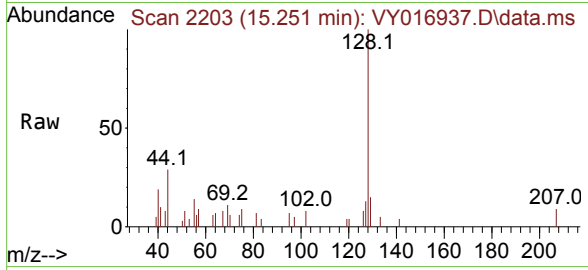
Tgt Ion: 105 Resp: 3994
 Ion Ratio Lower Upper
 105 100
 120 44.1 22.1 66.3





#95
 Naphthalene
 Concen: 2.596 ug/l
 RT: 15.251 min Scan# 21
 Delta R.T. 0.006 min
 Lab File: VY016937.D
 Acq: 08 Jan 2024 16:50

Instrument :
 MSVOA_Y
 ClientSampleId :



Tgt Ion:128 Resp: 2619

Ion	Ratio	Lower	Upper
128	100		
127	13.9	10.2	15.4
129	10.1	8.6	12.8

