

Data Path : Z:\VOASRV\HPCHEM1\MSVOA Y\DATA\VY011420\
 Data File : VY001202.D
 Acq On : 14 Jan 2020 14:26
 Operator : SY/MD
 Sample : L1108-02
 Misc : 3.51G/5ML/MSVOA Y/SOIL
 ALS Vial : 14 Sample Multiplier: 1

Instrument :
 MSVOA_Y
 ClientSampleId :
 INWOOD-BH-01-B

Integration Parameters: RTEINT.P

Integrator: RTE
 Smoothing : ON
 Sampling : 1
 Start Thrs: 0.2
 Stop Thrs : 0

Filtering: 5
 Min Area: 3 % of largest Peak
 Max Peaks: 100
 Peak Location: TOP

If leading or trailing edge < 100 prefer < Baseline drop else tangent >
 Peak separation: 5

Method : Z:\VOASRV\HPCHEM1\MSVOA_Y\METHODS\82Y011020S.M
 Title : SW846 8260

Signal : TIC

peak #	R.T. min	first scan	max scan	last scan	PK TY	peak height	corr. area	corr. % max.	% of total
1	4.731	478	491	501	rBV4	14067	46676	4.77%	0.831%
2	6.998	850	863	872	rBV2	33088	98390	10.05%	1.751%
3	7.730	972	983	989	rBV2	131359	315678	32.23%	5.619%
4	7.803	989	995	1007	rVB	216933	492303	50.27%	8.763%
5	8.151	1039	1052	1063	rBV2	143542	335147	34.22%	5.966%
6	8.699	1133	1142	1154	rVB	359750	710136	72.51%	12.641%
7	10.181	1377	1385	1393	rBV	577252	979333	100.00%	17.433%
8	10.577	1443	1450	1457	rBV	41741	74597	7.62%	1.328%
9	10.949	1503	1511	1522	rBV2	30269	51452	5.25%	0.916%
10	11.315	1566	1571	1578	rVB2	17707	30631	3.13%	0.545%
11	11.492	1587	1600	1609	rBV	514501	852322	87.03%	15.172%
12	12.479	1753	1762	1770	rBV2	427083	687283	70.18%	12.234%
13	12.821	1810	1818	1825	rBV6	4382	12121	1.24%	0.216%
14	12.985	1837	1845	1851	rBV6	5338	11571	1.18%	0.206%
15	13.071	1855	1859	1864	rVB2	11211	17308	1.77%	0.308%
16	13.180	1873	1877	1883	rVB3	12409	19616	2.00%	0.349%
17	13.278	1885	1893	1900	rBV2	17146	32644	3.33%	0.581%
18	13.424	1908	1917	1923	rBV	491865	763693	77.98%	13.594%
19	13.479	1923	1926	1932	rVB3	15269	29054	2.97%	0.517%
20	13.644	1947	1953	1956	rBV3	7162	12776	1.30%	0.227%
21	13.967	2000	2006	2019	rVB2	12063	24831	2.54%	0.442%
22	15.314	2222	2227	2233	rVB2	11968	20292	2.07%	0.361%

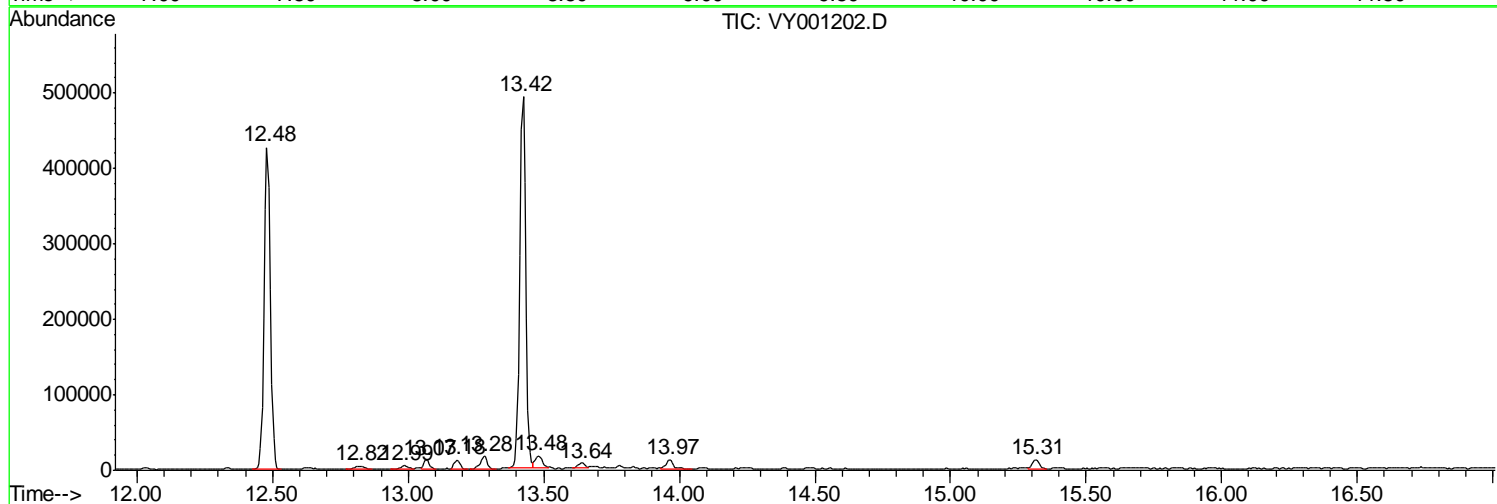
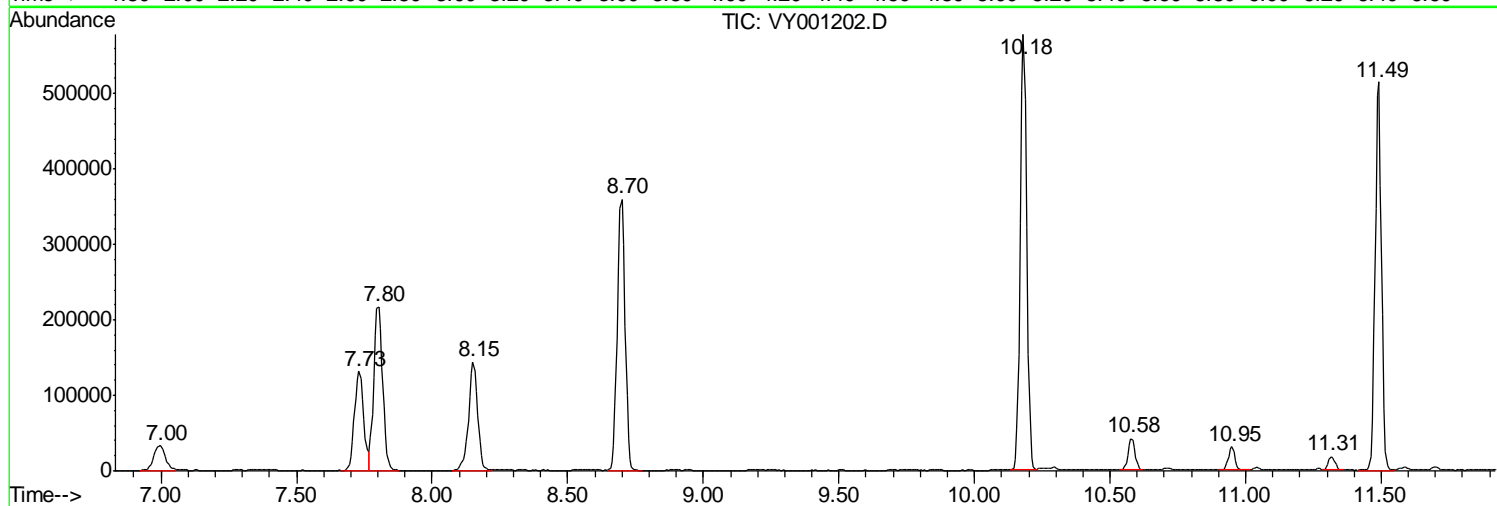
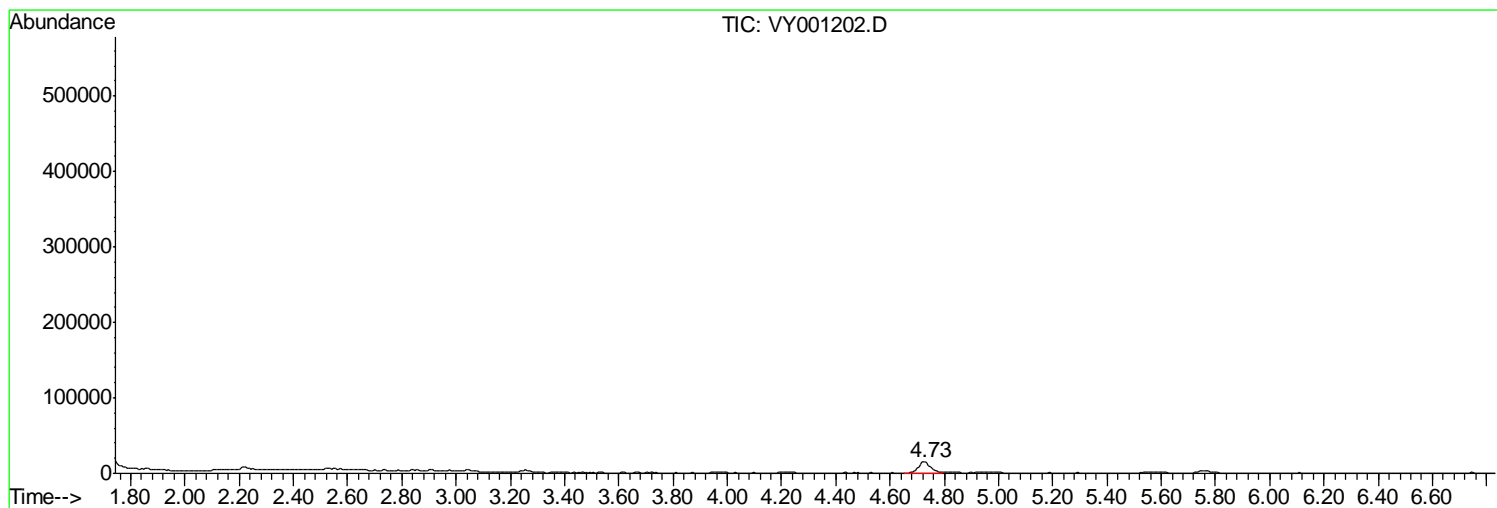
Sum of corrected areas: 5617854

Data Path : Z:\VOASRV\HPCHEM1\MSVOA Y\DATA\VY011420\
 Data File : VY001202.D
 Acq On : 14 Jan 2020 14:26
 Operator : SY/MD
 Sample : L1108-02
 Misc : 3.51G/5ML/MSVOA Y/SOIL
 ALS Vial : 14 Sample Multiplier: 1

Instrument :
 MSVOA_Y
 ClientSampleId :
 INWOOD-BH-01-B

Quant Method : Z:\VOASRV\HPCHEM1\MSVOA_Y\METHODS\82Y011020S.M
 Quant Title : SW846 8260

TIC Library : C:\DATABASE\NIST11.L
 TIC Integration Parameters: LSCINT.P



Data Path : Z:\VOASRV\HPCHEM1\MSVOA_Y\DATA\VY011420\
Data File : VY001202.D
Acq On : 14 Jan 2020 14:26
Operator : SY/MD
Sample : L1108-02
Misc : 3.51G/5ML/MSVOA_Y/SOIL
ALS Vial : 14 Sample Multiplier: 1

Instrument :
MSVOA_Y
ClientSampleId :
INWOOD-BH-01-B

Quant Method : Z:\VOASRV\HPCHEM1\MSVOA_Y\METHODS\82Y011020S.M
Quant Title : SW846 8260

TIC Library : C:\DATABASE\NIST11.L
TIC Integration Parameters: LSCINT.P

No Library Search Compounds Detected

Data Path : Z:\VOASRV\HPCHEM1\MSVOA_Y\DATA\VY011420\
Data File : VY001202.D
Acq On : 14 Jan 2020 14:26
Operator : SY/MD
Sample : L1108-02
Misc : 3.51G/5ML/MSVOA_Y/SOIL
ALS Vial : 14 Sample Multiplier: 1

Instrument :
MSVOA_Y
ClientSampleId :
INWOOD-BH-01-B

Quant Method : Z:\VOASRV\HPCHEM1\MSVOA_Y\METHODS\82Y011020S.M
Quant Title : SW846 8260

TIC Library : C:\DATABASE\NIST11.L
TIC Integration Parameters: LSCINT.P

TIC Top Hit name	RT	EstConc	Units	Response	--Internal Standard--			
					#	RT	Resp	Conc
