

Data Path : Z:\VOASRV\HPCHEM1\MSVOA\_Y\DATA\VY011520\  
 Data File : VY001246.D  
 Acq On : 16 Jan 2020 02:40  
 Operator : SY/MD  
 Sample : L1136-10  
 Misc : 7.51G/5ML/MSVOA\_Y/SOIL  
 ALS Vial : 43 Sample Multiplier: 1

Instrument :  
 MSVOA\_Y  
 ClientSampleId :  
 WP022SB458\_200113\_23-25

Quant Time: Jan 16 04:57:14 2020  
 Quant Method : Z:\VOASRV\HPCHEM1\MSVOA\_Y\METHODS\82Y011020S.M  
 Quant Title : SW846 8260  
 QLast Update : Fri Jan 10 16:01:58 2020  
 Response via : Initial Calibration

Internal Standards	R.T.	QIon	Response	Conc	Units	Dev(Min)
1) Pentafluorobenzene	7.80	168	176127	50.00	ug/l	0.00
34) 1,4-Difluorobenzene	8.70	114	320919	50.00	ug/l	0.00
63) Chlorobenzene-d5	11.49	117	282441	50.00	ug/l	0.00
72) 1,4-Dichlorobenzene-d4	13.42	152	104920	50.00	ug/l	0.00

System Monitoring Compounds	R.T.	QIon	Response	Conc	Units	Dev(Min)
33) 1,2-Dichloroethane-d4	8.15	65	105799	56.87	ug/l	0.00
Spiked Amount				50.000		
			Recovery	=	113.74%	
35) Dibromofluoromethane	7.73	113	93991	50.02	ug/l	0.00
Spiked Amount				50.000		
			Recovery	=	100.04%	
50) Toluene-d8	10.18	98	379139	52.37	ug/l	0.00
Spiked Amount				50.000		
			Recovery	=	104.74%	
62) 4-Bromofluorobenzene	12.48	95	130184	43.98	ug/l	0.00
Spiked Amount				50.000		
			Recovery	=	87.96%	

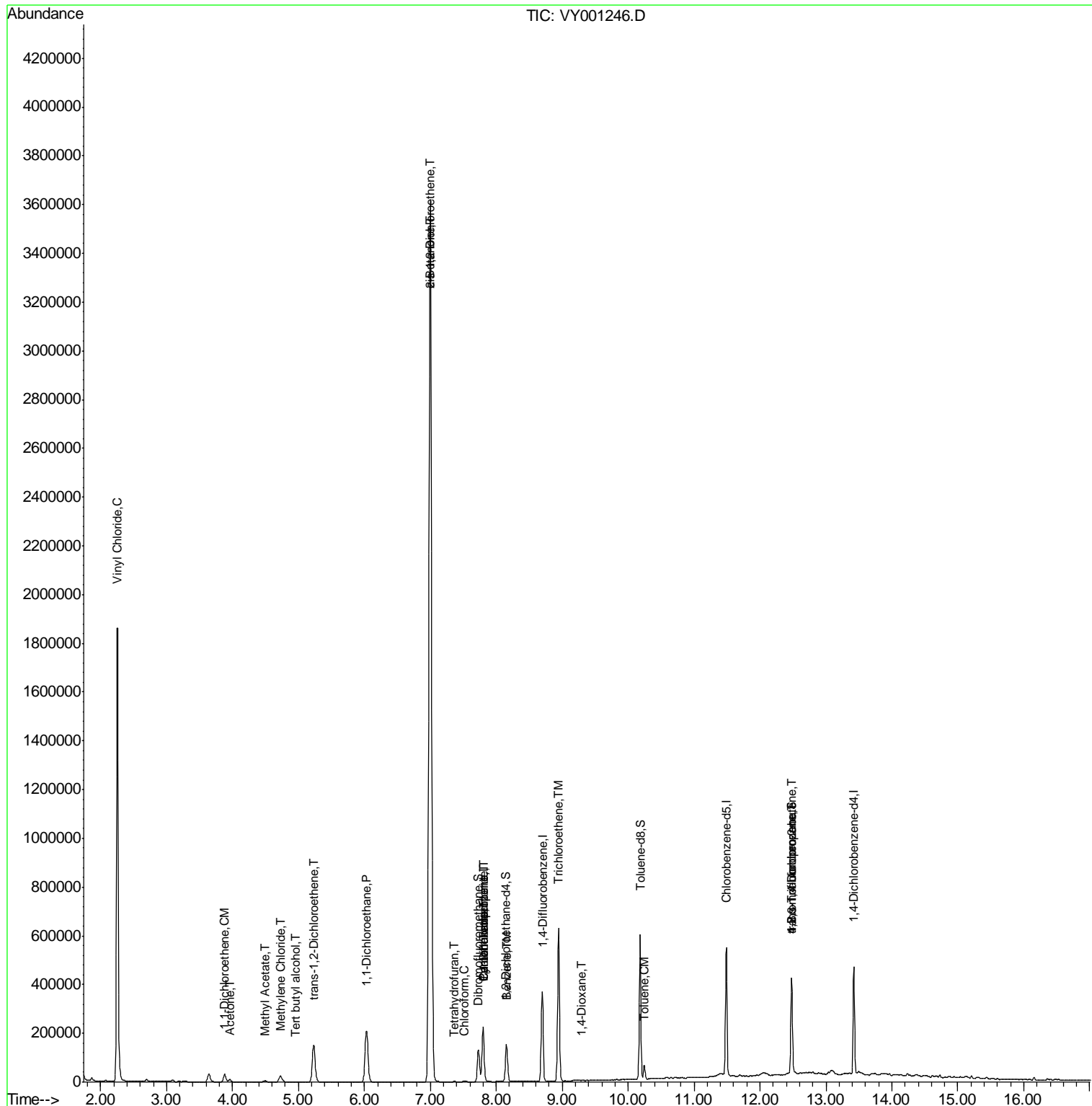
Target Compounds	R.T.	QIon	Response	Conc	Units	Qvalue
4) Vinyl Chloride	2.26	62	1845602	939.608	ug/l	100
11) Tert butyl alcohol	4.96	59	954	5.097	ug/l #	83
12) 1,1-Dichloroethene	3.88	96	18098	10.051	ug/l	94
16) Acetone	3.96	43	16243	37.598	ug/l	99
18) Methyl Acetate	4.49	43	11260	7.883	ug/l	96
20) Methylene Chloride	4.72	84	19416	4.632	ug/l	92
21) trans-1,2-Dichloroethene	5.23	96	104013	50.947	ug/l	99
24) 1,1-Dichloroethane	6.03	63	323172	95.108	ug/l	99
25) 2-Butanone	7.00	43	2516	3.742	ug/l #	1
27) cis-1,2-Dichloroethene	7.00	96	2326974	1040.183	ug/l	92
29) Tetrahydrofuran	7.36	42	1073	2.329	ug/l #	81
30) Chloroform	7.52	83	3910	1.174	ug/l	89
31) Cyclohexane	7.80	56	4735	1.316	ug/l #	1
36) 1,1-Dichloropropene	7.80	75	14035	4.798	ug/l #	49
38) Carbon Tetrachloride	7.80	117	17371	6.480	ug/l #	14
40) Benzene	8.16	78	26842	3.144	ug/l	96
44) Trichloroethene	8.94	130	220561	99.137	ug/l	98
49) 1,4-Dioxane	9.30	88	350	24.954	ug/l #	55
52) Toluene	10.25	92	23450	4.306	ug/l	98
76) 1,2,3-Trichloropropane	12.48	75	62499	55.645	ug/l #	100
81) trans-1,4-Dichloro-2-buten	12.48	75	62499	94.361	ug/l #	6

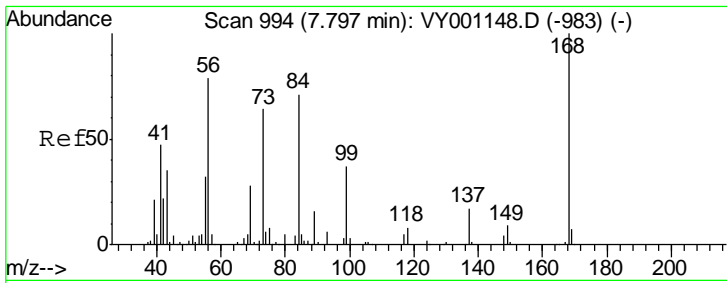
(#) = qualifier out of range (m) = manual integration (+) = signals summed

Data Path : Z:\VOASRV\HPCHEM1\MSVOA\_Y\DATA\VY011520\  
 Data File : VY001246.D  
 Acq On : 16 Jan 2020 02:40  
 Operator : SY/MD  
 Sample : L1136-10  
 Misc : 7.51G/5ML/MSVOA\_Y/SOIL  
 ALS Vial : 43 Sample Multiplier: 1

Instrument :  
 MSVOA\_Y  
 ClientSampled :  
 WP022SB458\_200113\_23-25

Quant Time: Jan 16 04:57:14 2020  
 Quant Method : Z:\VOASRV\HPCHEM1\MSVOA\_Y\METHODS\82Y011020S.M  
 Quant Title : SW846 8260  
 QLast Update : Fri Jan 10 16:01:58 2020  
 Response via : Initial Calibration

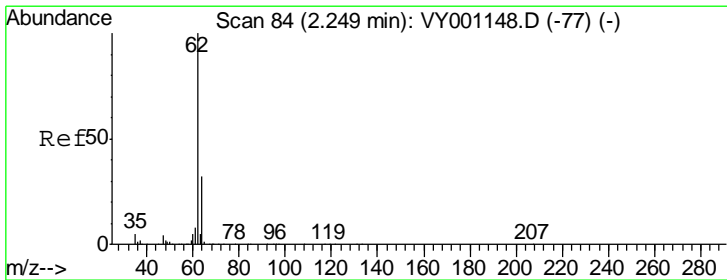
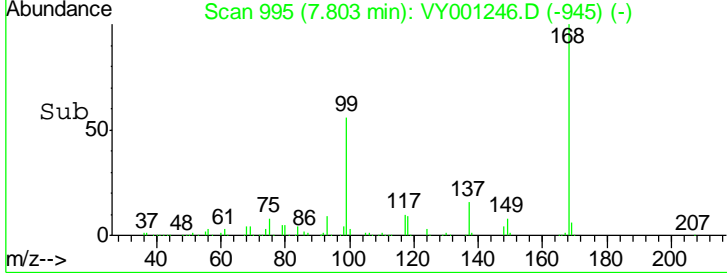
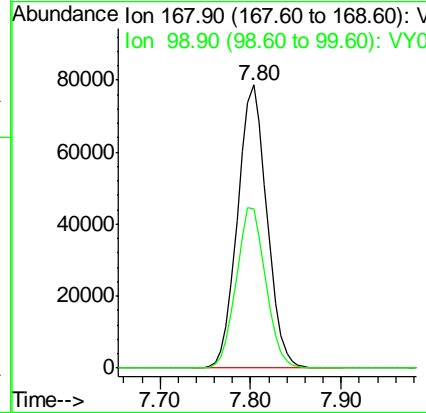
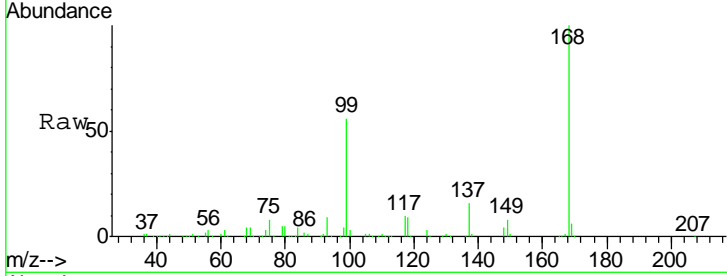




#1  
 Pentafluorobenzene  
 Concen: 50.000 ug/l  
 RT: 7.80 min Scan# 995  
 Delta R.T. 0.01 min  
 Lab File: VY001246.D  
 Acq: 16 Jan 2020 02:40

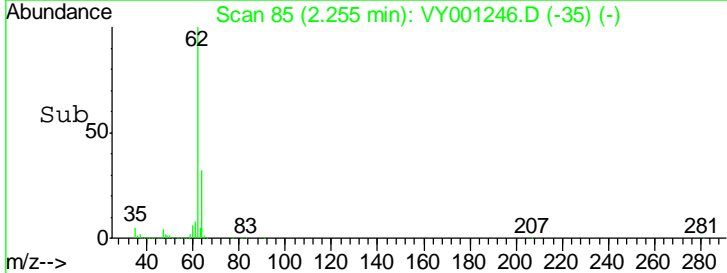
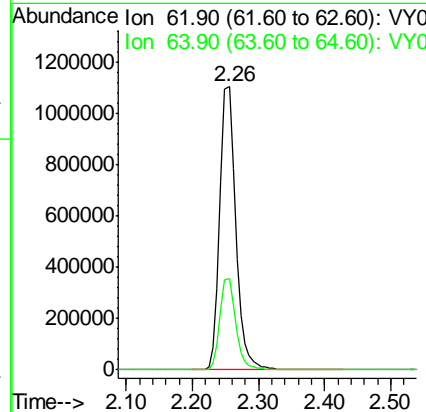
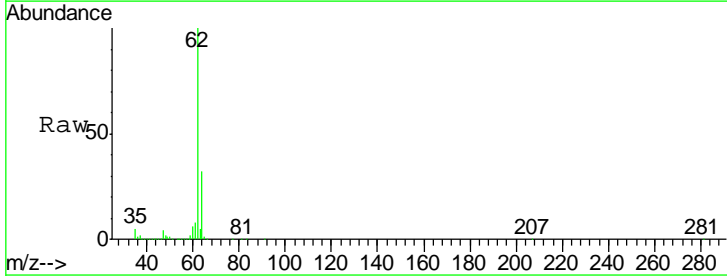
Instrument : MSVOA\_Y  
 ClientSampleId : WP022SB458\_200113\_23-25

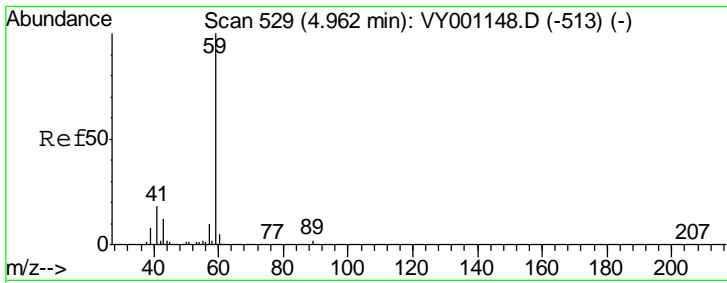
Tgt Ion: 168 Resp: 176127  
 Ion Ratio Lower Upper  
 168 100  
 99 56.3 47.9 71.9



#4  
 Vinyl Chloride  
 Concen: 939.608 ug/l  
 RT: 2.26 min Scan# 85  
 Delta R.T. 0.01 min  
 Lab File: VY001246.D  
 Acq: 16 Jan 2020 02:40

Tgt Ion: 62 Resp: 1845602  
 Ion Ratio Lower Upper  
 62 100  
 64 32.1 25.8 38.8

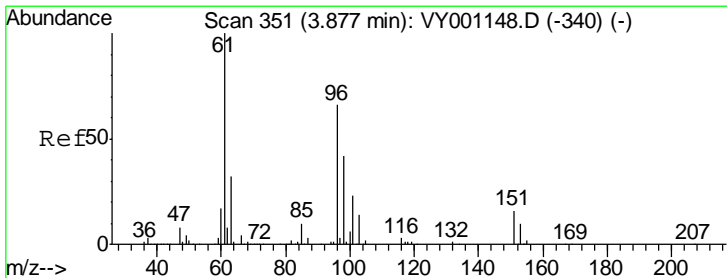
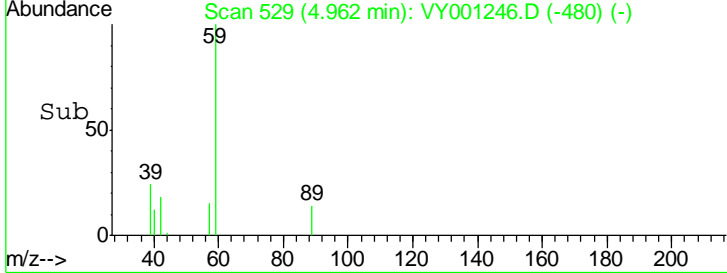
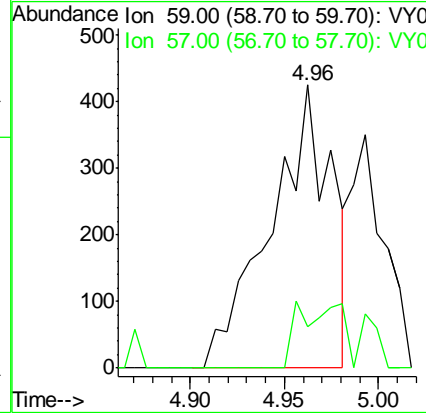
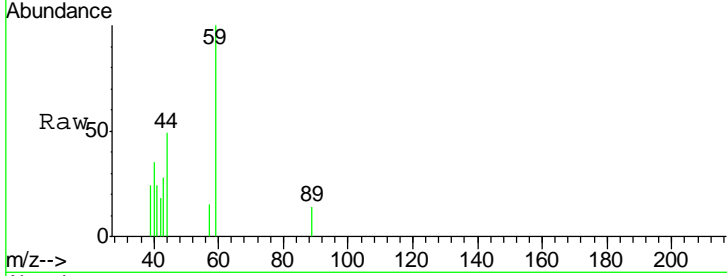




#11  
 Tert butyl alcohol  
 Concen: 5.097 ug/l  
 RT: 4.96 min Scan# 529  
 Delta R.T. 0.00 min  
 Lab File: VY001246.D  
 Acq: 16 Jan 2020 02:40

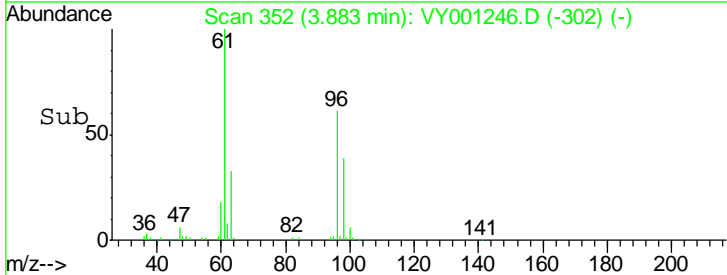
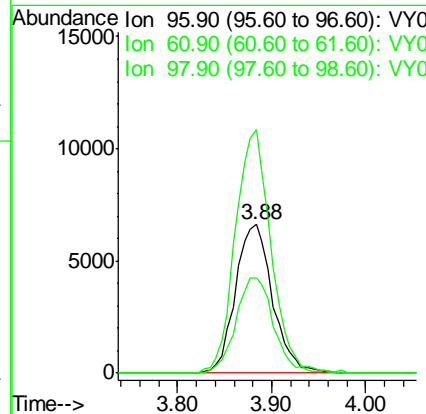
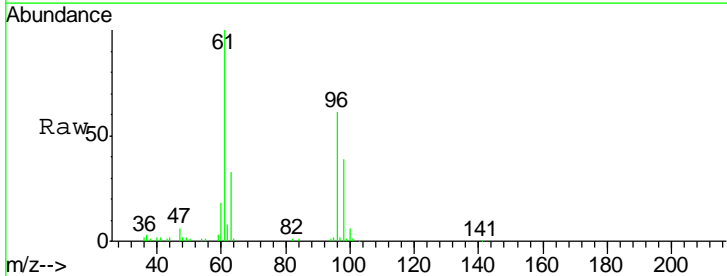
Instrument :  
 MSVOA\_Y  
 ClientSampled :  
 WP022SB458\_200113\_23-25

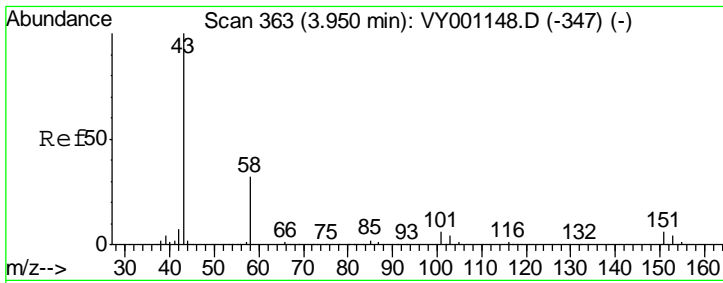
Tgt Ion: 59 Resp: 954  
 Ion Ratio Lower Upper  
 59 100  
 57 16.2 7.8 11.8#



#12  
 1,1-Dichloroethene  
 Concen: 10.051 ug/l  
 RT: 3.88 min Scan# 352  
 Delta R.T. 0.01 min  
 Lab File: VY001246.D  
 Acq: 16 Jan 2020 02:40

Tgt Ion: 96 Resp: 18098  
 Ion Ratio Lower Upper  
 96 100  
 61 164.0 122.1 183.1  
 98 63.9 51.0 76.6

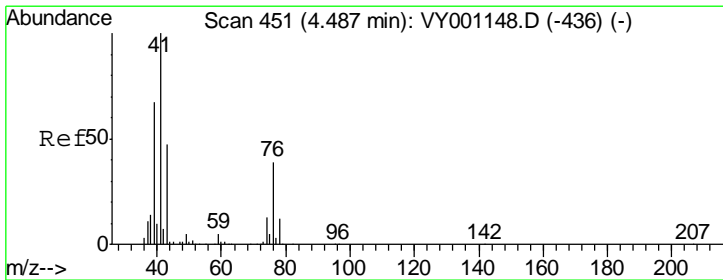
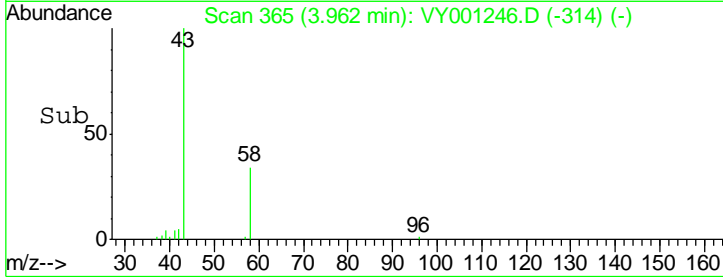
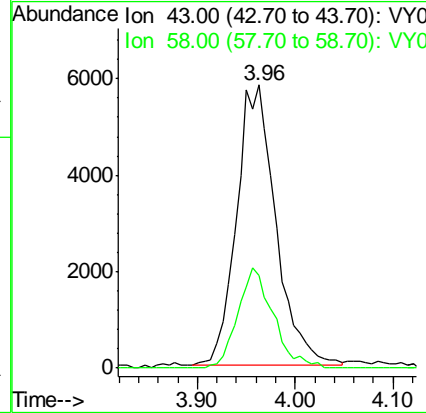
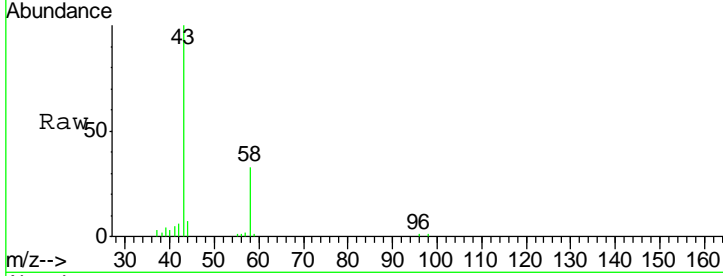




#16  
 Acetone  
 Concen: 37.598 ug/l  
 RT: 3.96 min Scan# 365  
 Delta R.T. 0.01 min  
 Lab File: VY001246.D  
 Acq: 16 Jan 2020 02:40

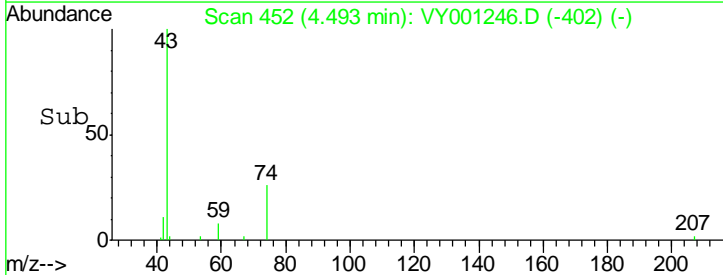
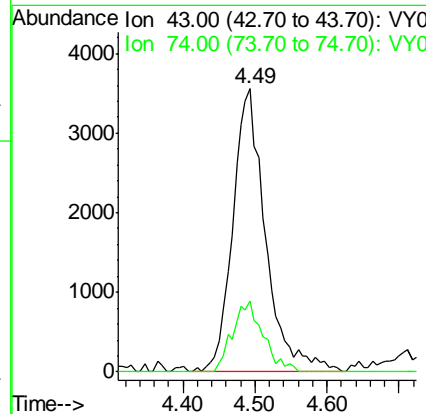
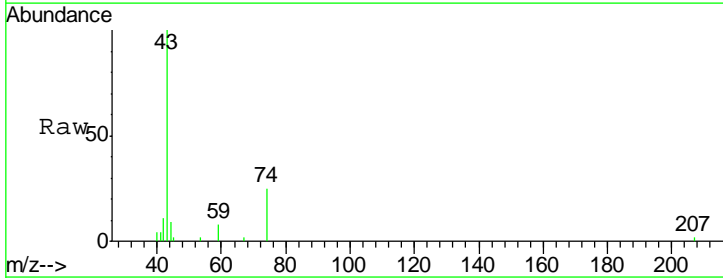
Instrument : MSVOA\_Y  
 ClientSampled : WP022SB458\_200113\_23-25

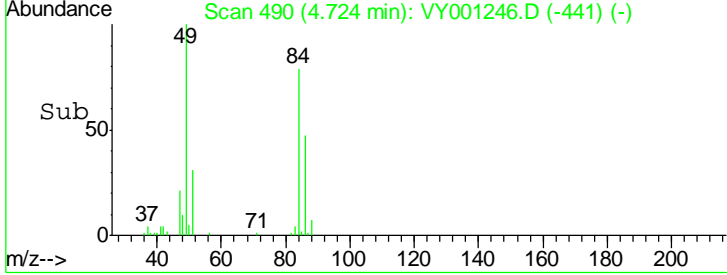
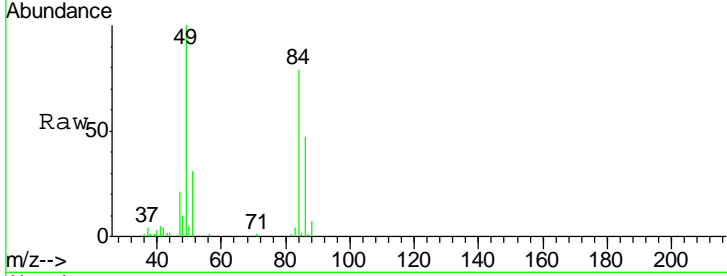
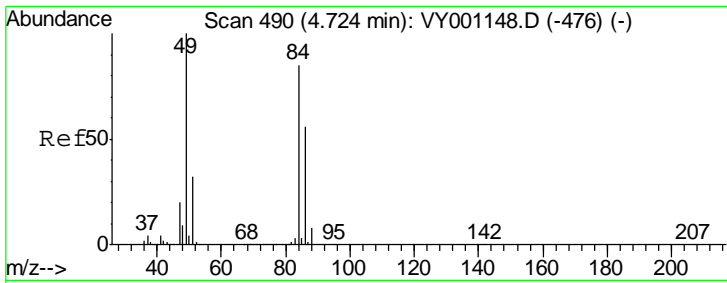
Tgt Ion: 43 Resp: 16243  
 Ion Ratio Lower Upper  
 43 100  
 58 33.0 25.8 38.6



#18  
 Methyl Acetate  
 Concen: 7.883 ug/l  
 RT: 4.49 min Scan# 452  
 Delta R.T. 0.01 min  
 Lab File: VY001246.D  
 Acq: 16 Jan 2020 02:40

Tgt Ion: 43 Resp: 11260  
 Ion Ratio Lower Upper  
 43 100  
 74 23.3 20.2 30.2

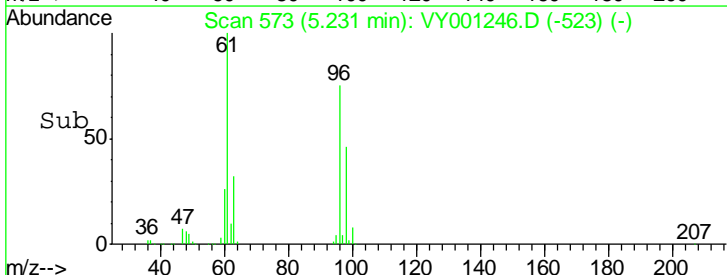
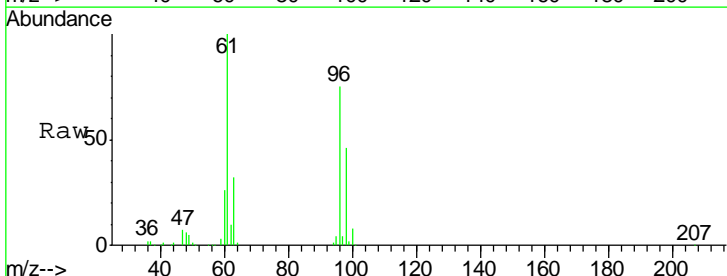
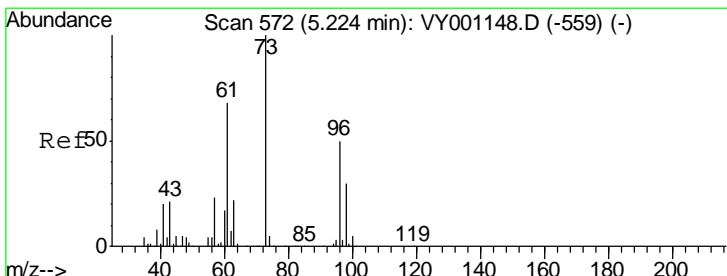
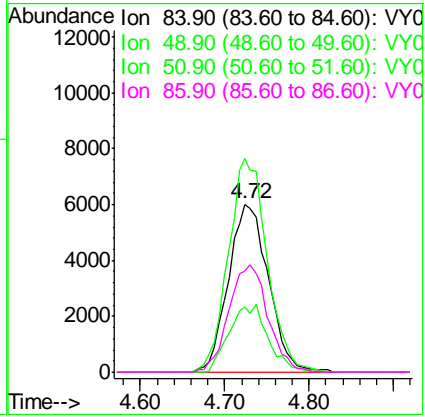




#20  
 Methylene Chloride  
 Concen: 4.632 ug/l  
 RT: 4.72 min Scan# 490  
 Delta R.T. 0.00 min  
 Lab File: VY001246.D  
 Acq: 16 Jan 2020 02:40

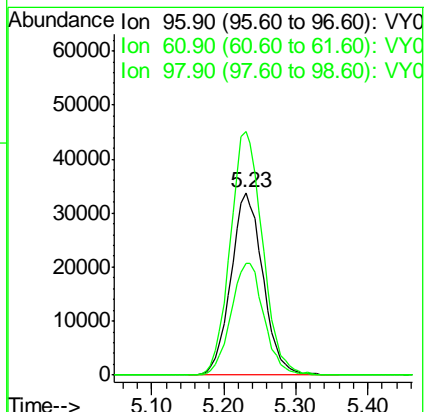
Instrument : MSVOA\_Y  
 ClientSampleId : WP022SB458\_200113\_23-25

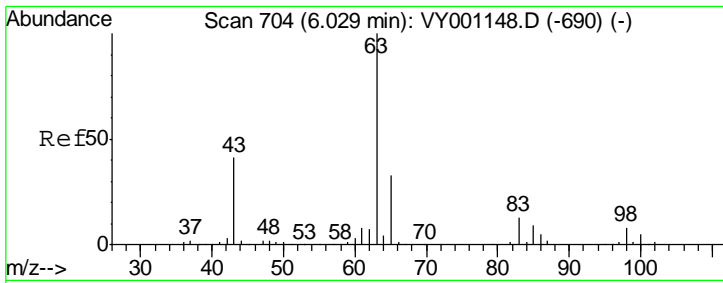
Tgt Ion	Resp	Lower	Upper
84	19416		
84	100		
49	127.3	93.8	140.6
51	39.2	29.9	44.9
86	60.1	52.6	78.8



#21  
 trans-1,2-Dichloroethene  
 Concen: 50.947 ug/l  
 RT: 5.23 min Scan# 573  
 Delta R.T. 0.01 min  
 Lab File: VY001246.D  
 Acq: 16 Jan 2020 02:40

Tgt Ion	Resp	Lower	Upper
96	104013		
96	100		
61	133.5	107.6	161.4
98	61.1	47.6	71.4

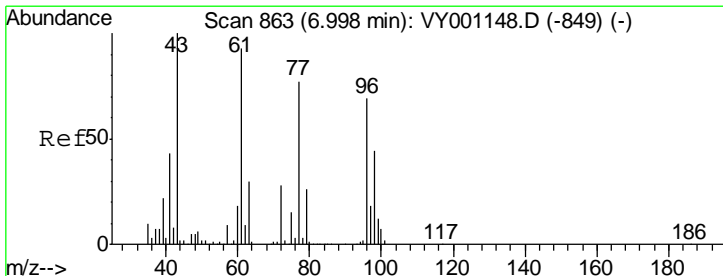
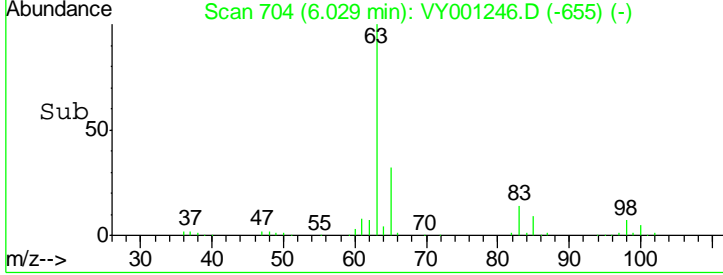
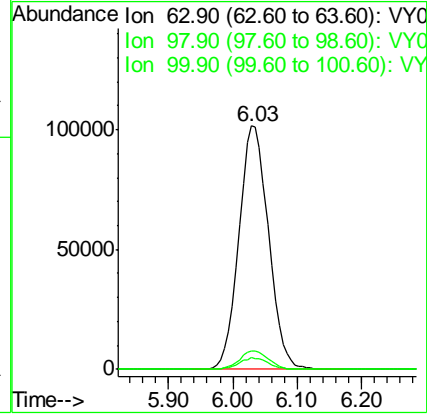
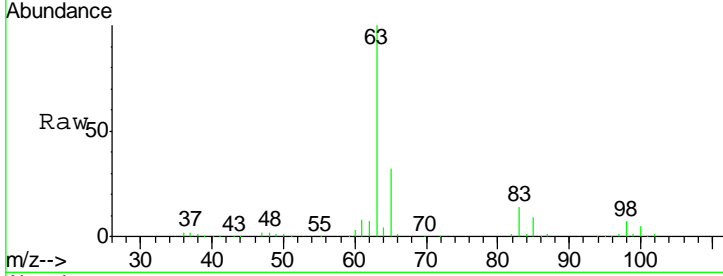




#24  
 1,1-Dichloroethane  
 Concen: 95.108 ug/l  
 RT: 6.03 min Scan# 704  
 Delta R.T. 0.00 min  
 Lab File: VY001246.D  
 Acq: 16 Jan 2020 02:40

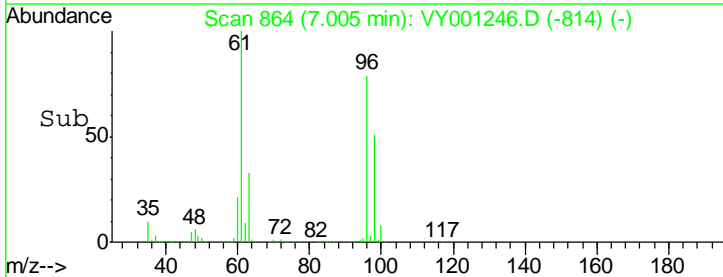
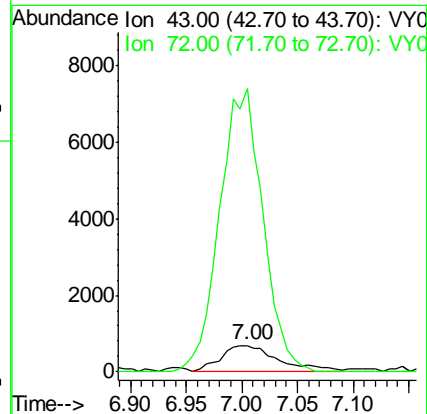
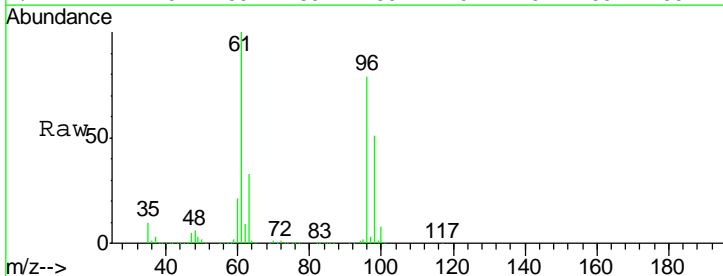
Instrument :  
 MSVOA\_Y  
 ClientSampleId :  
 WP022SB458\_200113\_23-25

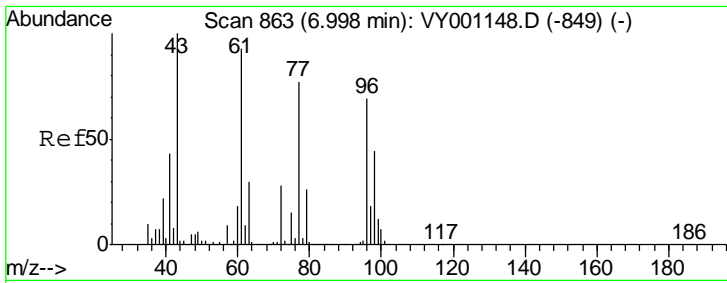
Tgt Ion	Resp	Lower	Upper
63	100		
98	7.3	3.9	11.7
100	4.8	2.4	7.2



#25  
 2-Butanone  
 Concen: 3.742 ug/l  
 RT: 7.00 min Scan# 864  
 Delta R.T. 0.01 min  
 Lab File: VY001246.D  
 Acq: 16 Jan 2020 02:40

Tgt Ion	Resp	Lower	Upper
43	100		
72	1072.4	22.2	33.2#



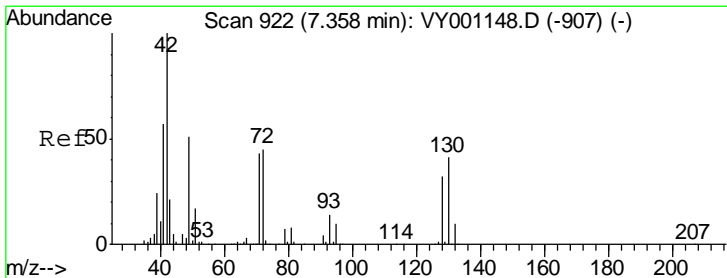
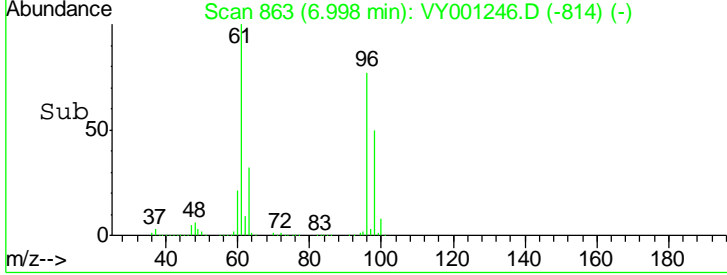
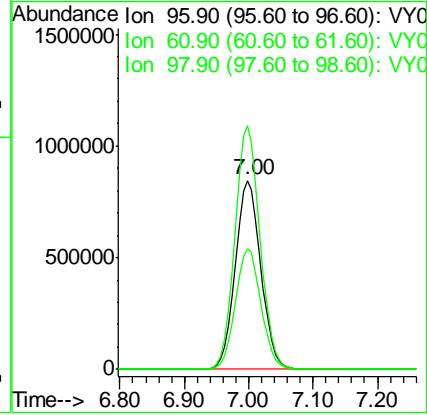
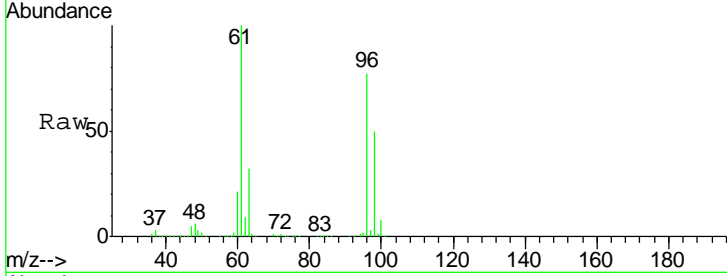


#27  
 cis-1,2-Dichloroethene  
 Concen: 1040.183 ug/l  
 RT: 7.00 min Scan# 863  
 Delta R.T. 0.00 min  
 Lab File: VY001246.D  
 Acq: 16 Jan 2020 02:40

Instrument :  
 MSVOA\_Y  
 ClientSampled :  
 WP022SB458\_200113\_23-25

Tgt Ion: 96 Resp: 2326974

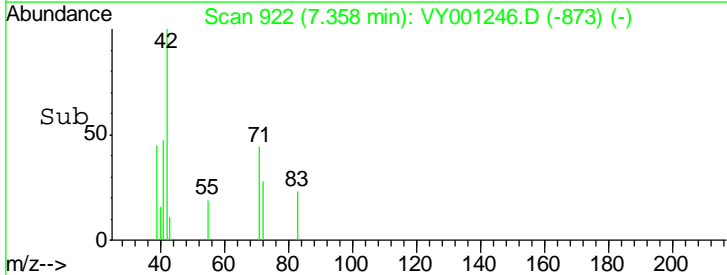
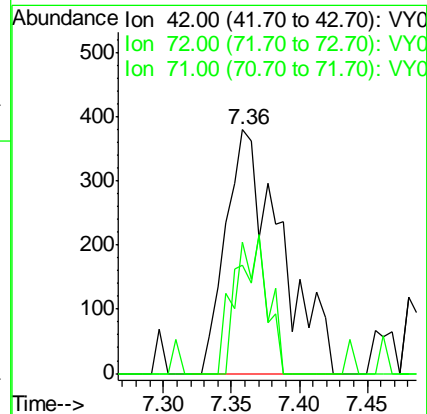
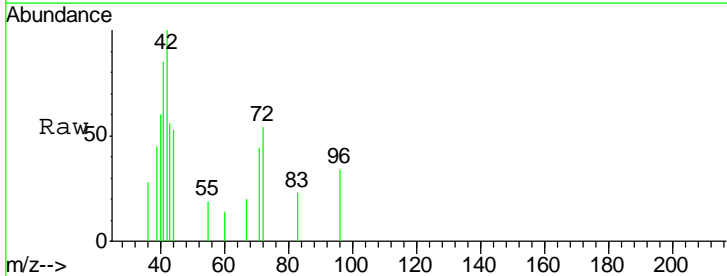
Ion	Ratio	Lower	Upper
96	100		
61	127.5	0.0	284.0
98	64.2	0.0	130.2



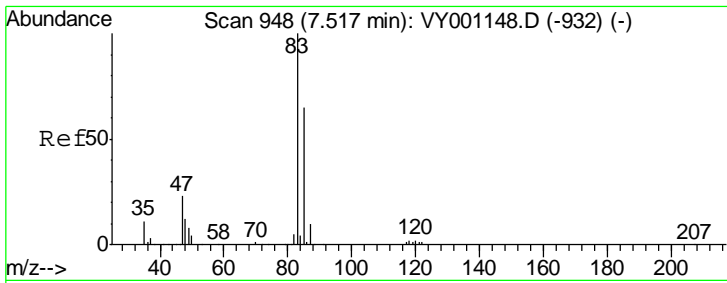
#29  
 Tetrahydrofuran  
 Concen: 2.329 ug/l  
 RT: 7.36 min Scan# 922  
 Delta R.T. 0.00 min  
 Lab File: VY001246.D  
 Acq: 16 Jan 2020 02:40

Tgt Ion: 42 Resp: 1073

Ion	Ratio	Lower	Upper
42	100		
72	32.8	36.9	55.3#
71	30.8	34.0	51.0#



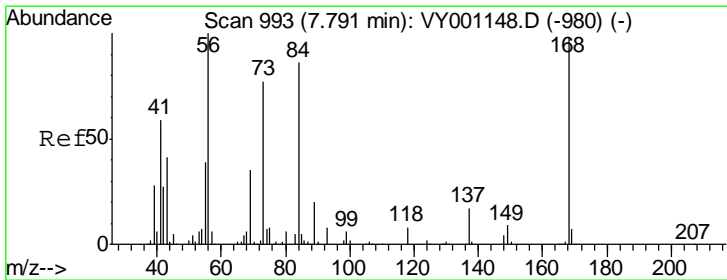
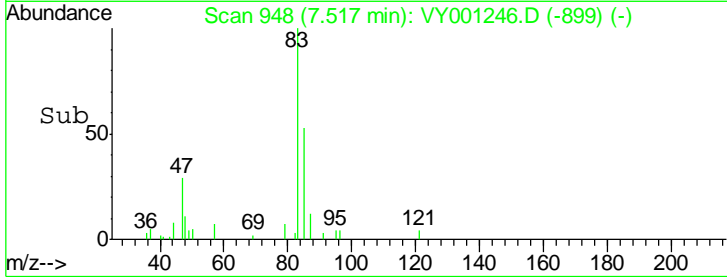
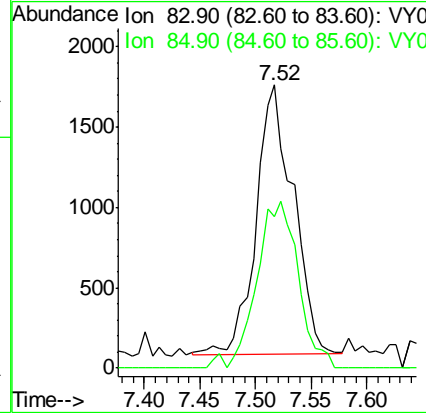
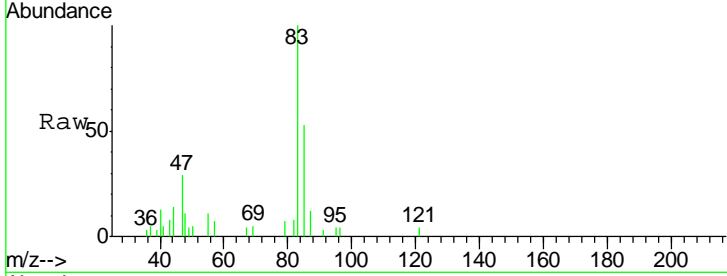




#30  
 Chloroform  
 Concen: 1.174 ug/l  
 RT: 7.52 min Scan# 948  
 Delta R.T. 0.00 min  
 Lab File: VY001246.D  
 Acq: 16 Jan 2020 02:40

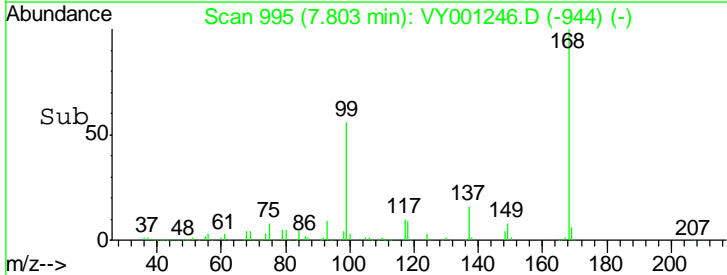
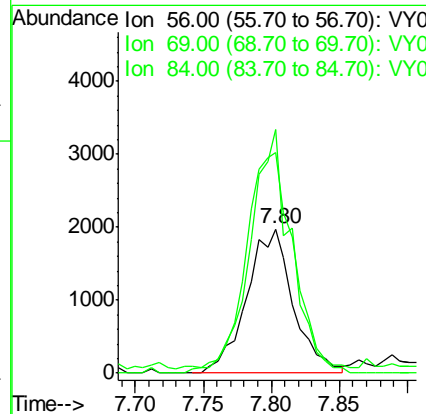
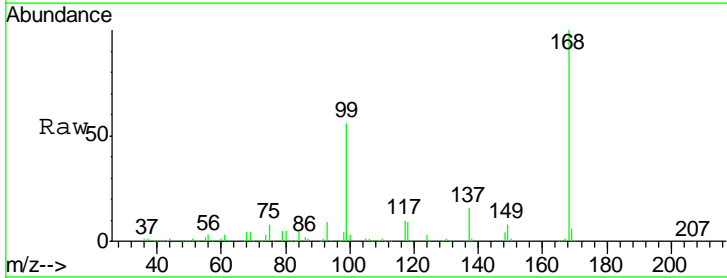
Instrument :  
 MSVOA\_Y  
 ClientSampleId :  
 WP022SB458\_200113\_23-25

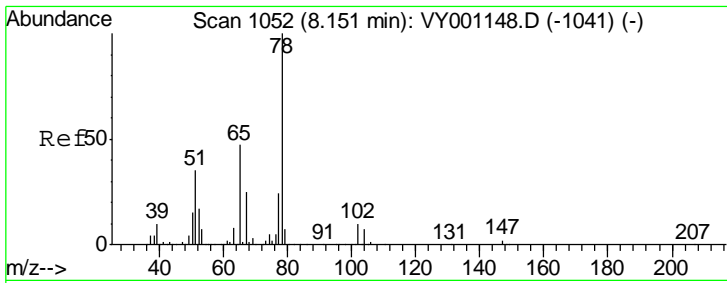
Tgt Ion	Resp	Ion Ratio	Lower	Upper
83	3910	100		
85		56.6	51.9	77.9



#31  
 Cyclohexane  
 Concen: 1.316 ug/l  
 RT: 7.80 min Scan# 995  
 Delta R.T. 0.01 min  
 Lab File: VY001246.D  
 Acq: 16 Jan 2020 02:40

Tgt Ion	Resp	Ion Ratio	Lower	Upper
56	4735	100		
69		148.6	27.8	41.8#
84		165.8	68.9	103.3#

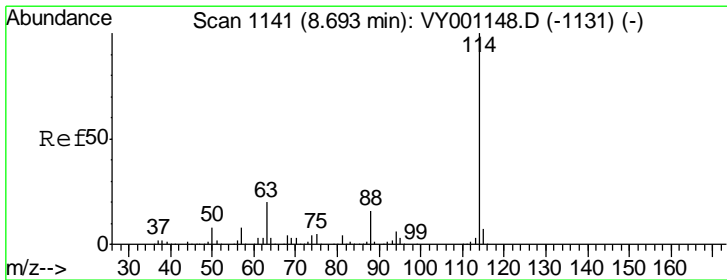
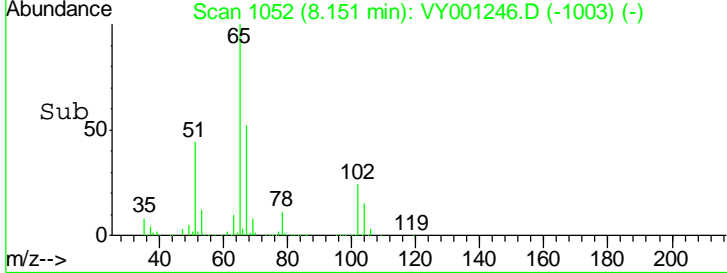
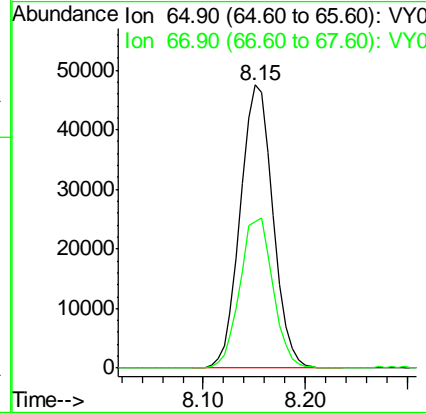
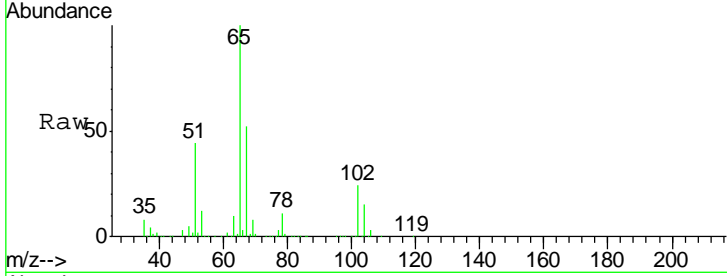




#33  
 1,2-Dichloroethane-d4  
 Concen: 56.875 ug/l  
 RT: 8.15 min Scan# 1052  
 Delta R.T. 0.00 min  
 Lab File: VY001246.D  
 Acq: 16 Jan 2020 02:40

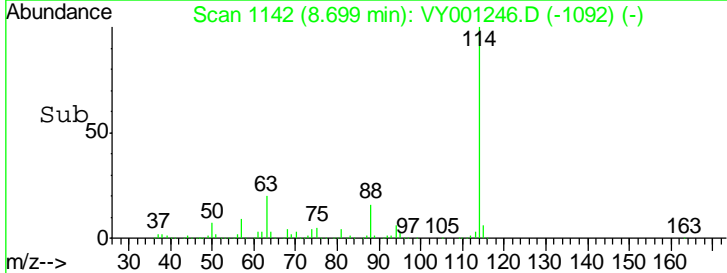
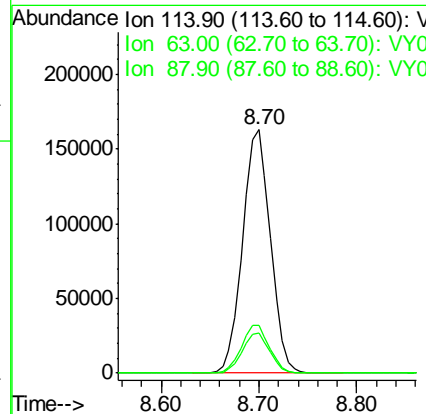
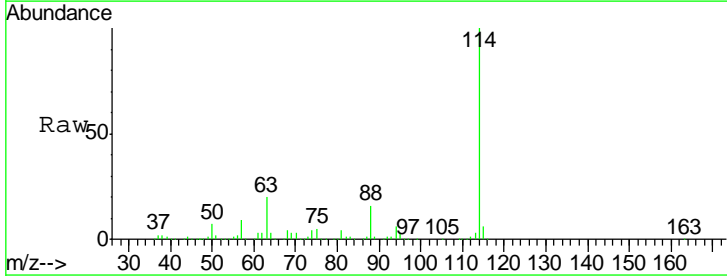
Instrument :  
 MSVOA\_Y  
 ClientSampled :  
 WP022SB458\_200113\_23-25

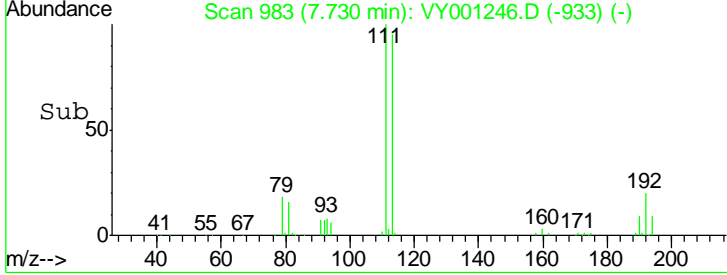
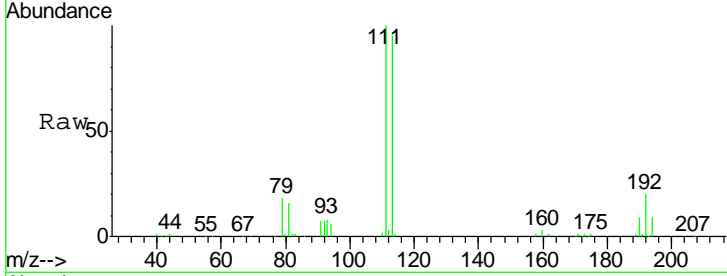
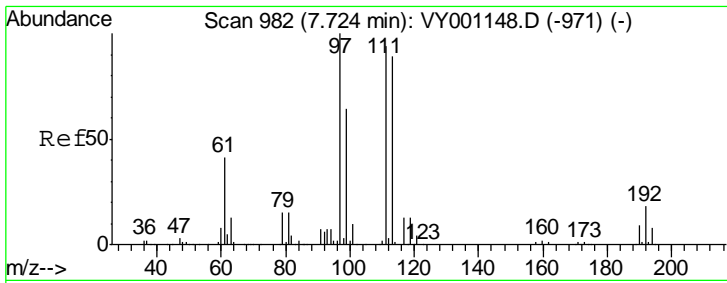
Tgt Ion: 65 Resp: 105799  
 Ion Ratio Lower Upper  
 65 100  
 67 53.9 0.0 105.2



#34  
 1,4-Difluorobenzene  
 Concen: 50.000 ug/l  
 RT: 8.70 min Scan# 1142  
 Delta R.T. 0.01 min  
 Lab File: VY001246.D  
 Acq: 16 Jan 2020 02:40

Tgt Ion: 114 Resp: 320919  
 Ion Ratio Lower Upper  
 114 100  
 63 19.7 0.0 40.8  
 88 16.4 0.0 32.4

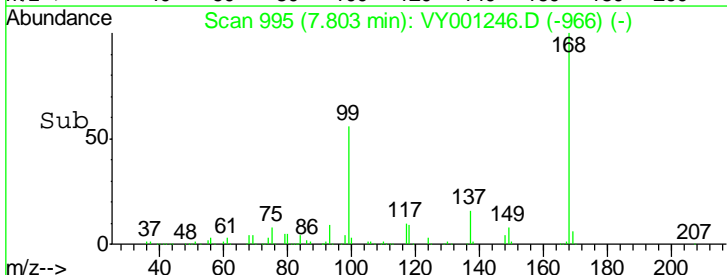
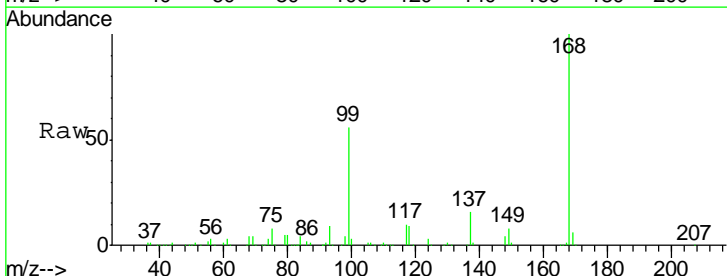
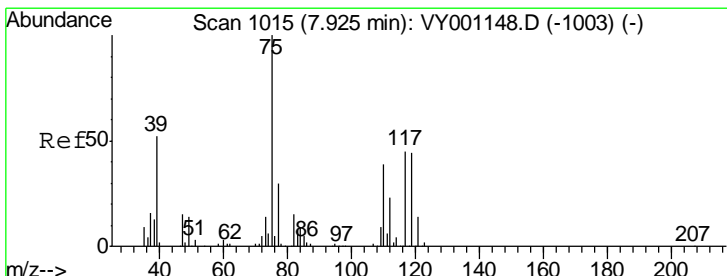
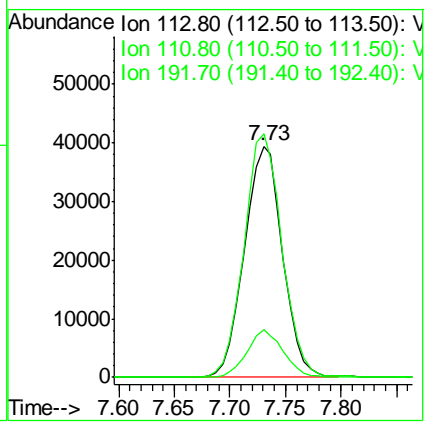




#35  
 Dibromofluoromethane  
 Concen: 50.022 ug/l  
 RT: 7.73 min Scan# 983  
 Delta R.T. 0.01 min  
 Lab File: VY001246.D  
 Acq: 16 Jan 2020 02:40

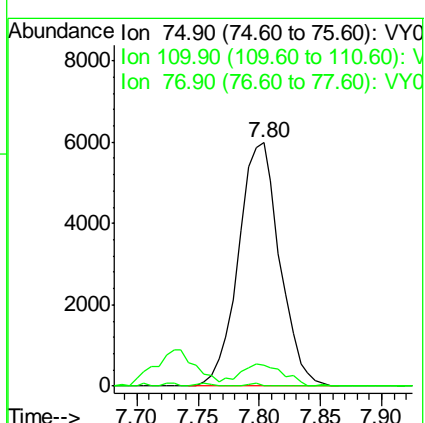
Instrument : MSVOA\_Y  
 ClientSampleId : WP022SB458\_200113\_23-25

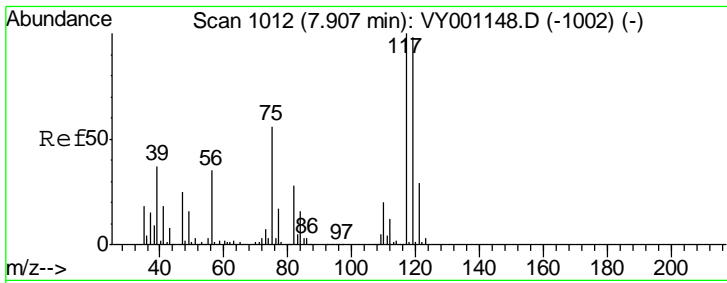
Tgt Ion	Resp	Lower	Upper
113	93991		
113	100		
111	105.4	82.9	124.3
192	19.6	15.4	23.2



#36  
 1,1-Dichloropropene  
 Concen: 4.798 ug/l  
 RT: 7.80 min Scan# 995  
 Delta R.T. -0.12 min  
 Lab File: VY001246.D  
 Acq: 16 Jan 2020 02:40

Tgt Ion	Resp	Lower	Upper
75	14035		
75	100		
110	9.7	18.3	54.8#
77	0.0	25.1	37.7#

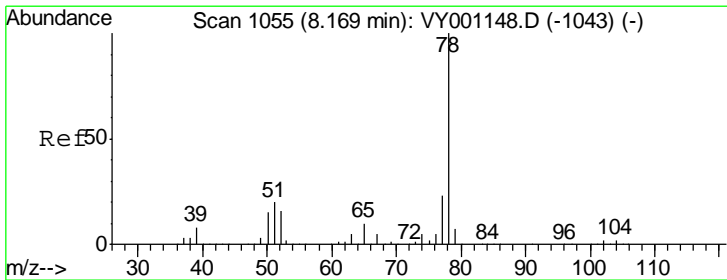
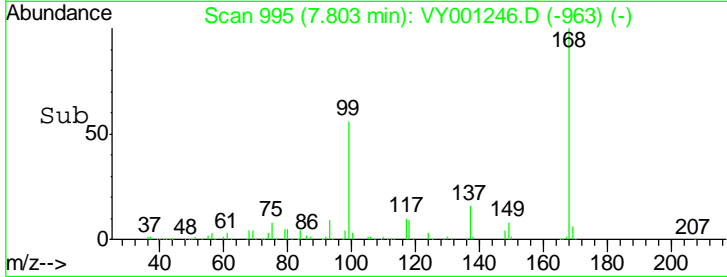
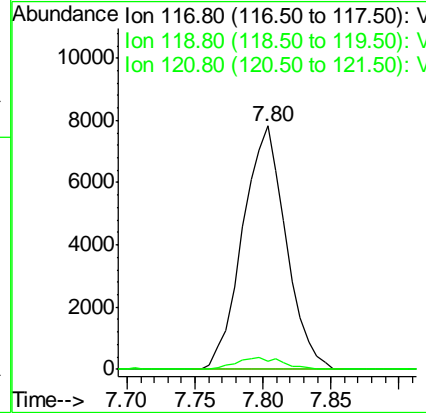
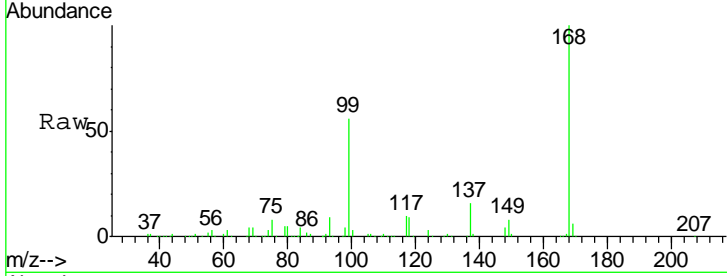




#38  
 Carbon Tetrachloride  
 Concen: 6.480 ug/l  
 RT: 7.80 min Scan# 995  
 Delta R.T. -0.10 min  
 Lab File: VY001246.D  
 Acq: 16 Jan 2020 02:40

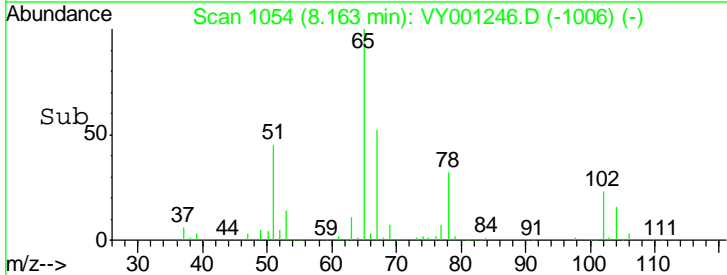
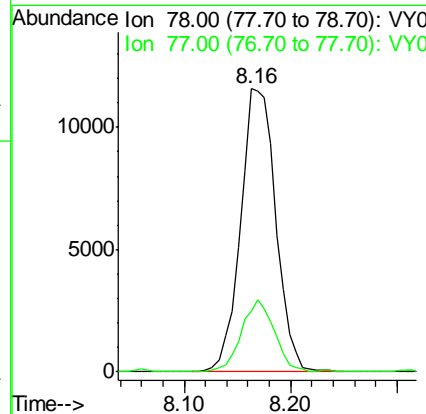
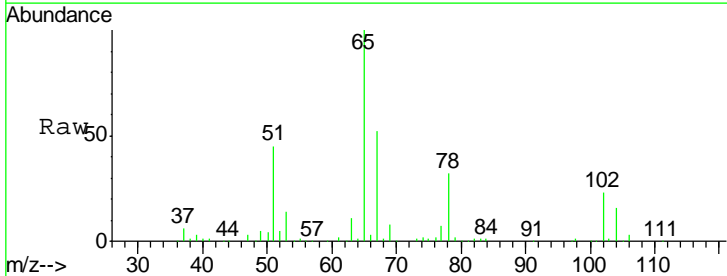
Instrument :  
 MSVOA\_Y  
 ClientSampleId :  
 WP022SB458\_200113\_23-25

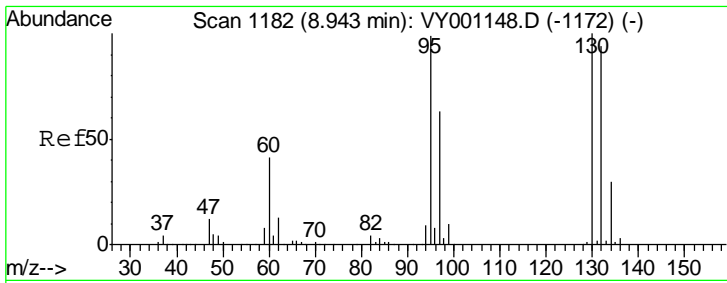
Tgt Ion	Resp	Lower	Upper
117	17371		
119	3.5	78.3	117.5#
121	0.0	23.5	35.3#



#40  
 Benzene  
 Concen: 3.144 ug/l  
 RT: 8.16 min Scan# 1054  
 Delta R.T. -0.01 min  
 Lab File: VY001246.D  
 Acq: 16 Jan 2020 02:40

Tgt Ion	Resp	Lower	Upper
78	26842		
77	21.3	18.8	28.2



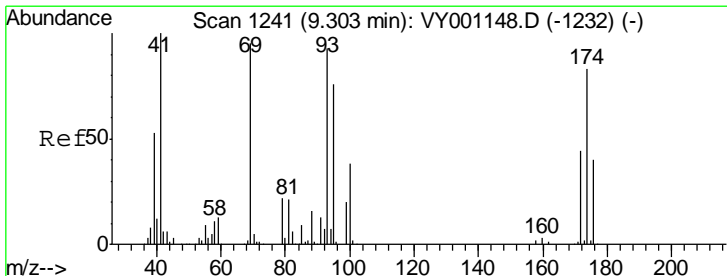
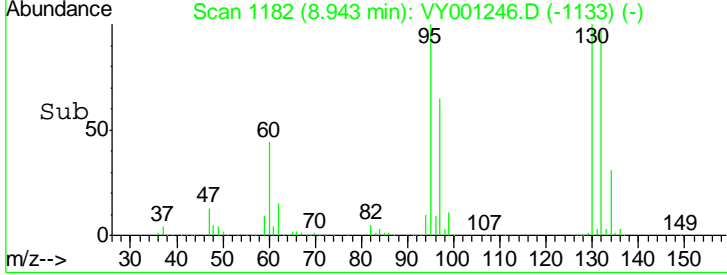
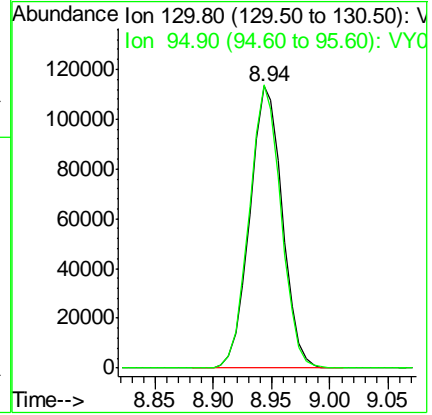
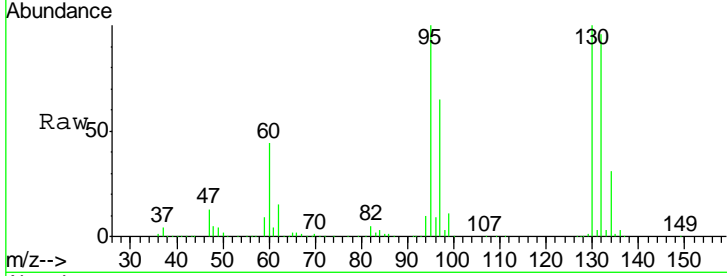


#44

Trichloroethene  
 Concen: 99.137 ug/l  
 RT: 8.94 min Scan# 1182  
 Delta R.T. 0.00 min  
 Lab File: VY001246.D  
 Acq: 16 Jan 2020 02:40

Instrument : MSVOA\_Y  
 ClientSampled : WP022SB458\_200113\_23-25

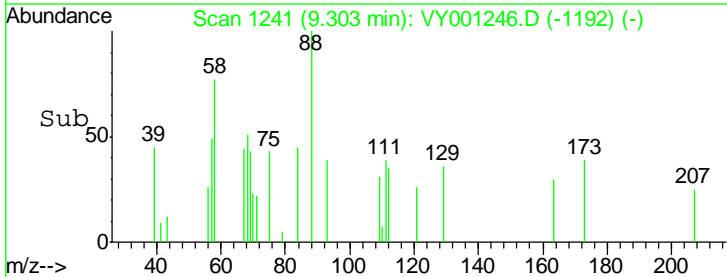
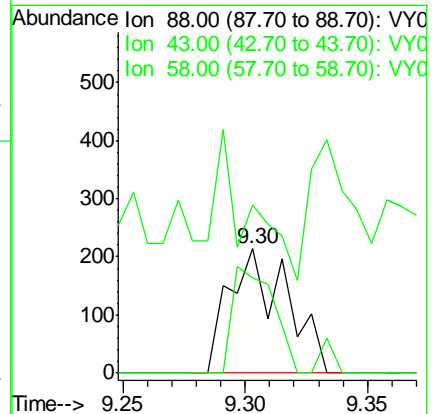
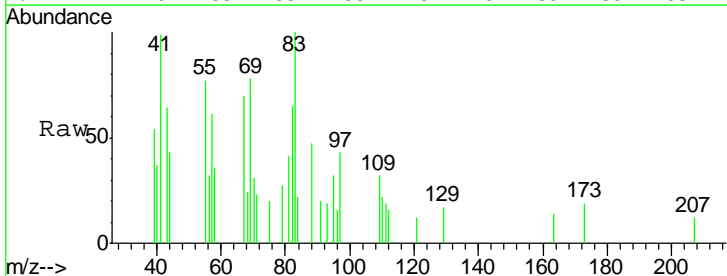
Tgt Ion	Resp	Lower	Upper
130	100		
95	100.4	0.0	197.6

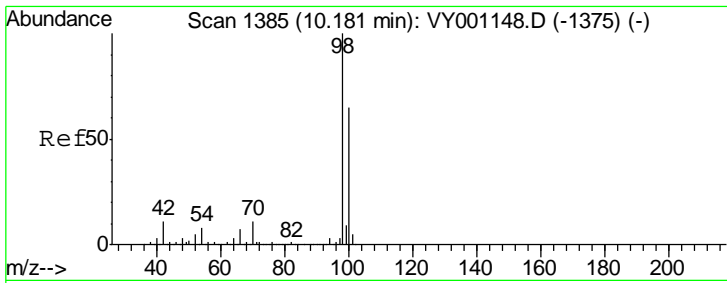


#49

1,4-Dioxane  
 Concen: 24.954 ug/l  
 RT: 9.30 min Scan# 1241  
 Delta R.T. 0.00 min  
 Lab File: VY001246.D  
 Acq: 16 Jan 2020 02:40

Tgt Ion	Resp	Lower	Upper
88	100		
43	94.3	22.4	33.6#
58	60.6	58.0	87.0

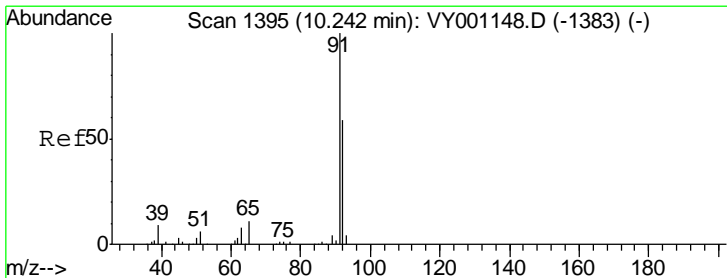
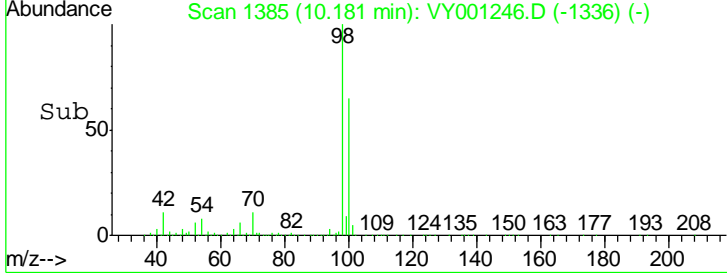
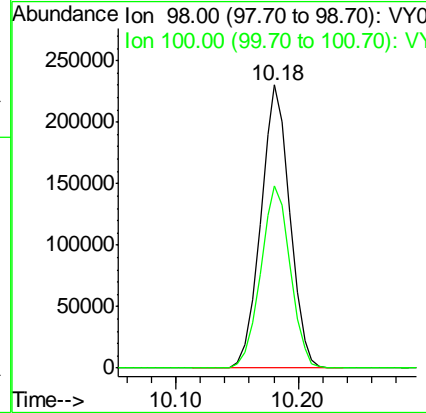
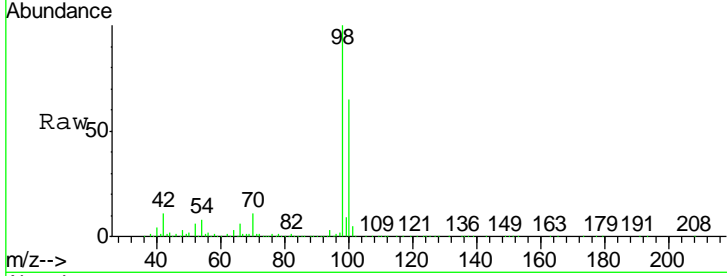




#50  
 Toluene-d8  
 Concen: 52.367 ug/l  
 RT: 10.18 min Scan# 1385  
 Delta R.T. 0.00 min  
 Lab File: VY001246.D  
 Acq: 16 Jan 2020 02:40

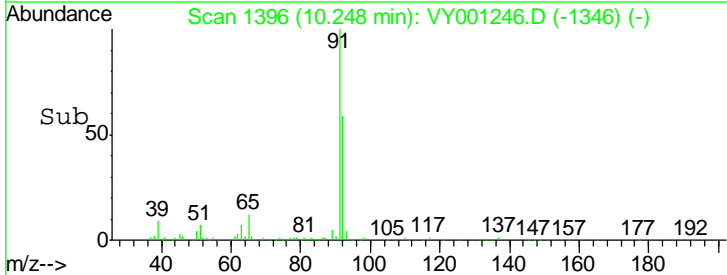
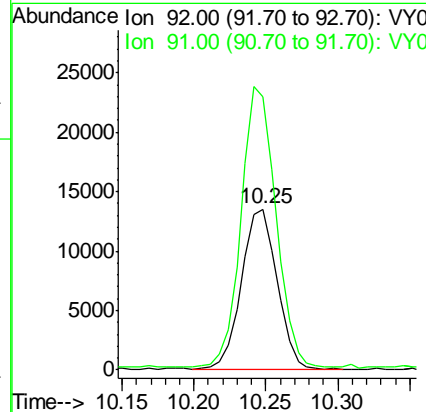
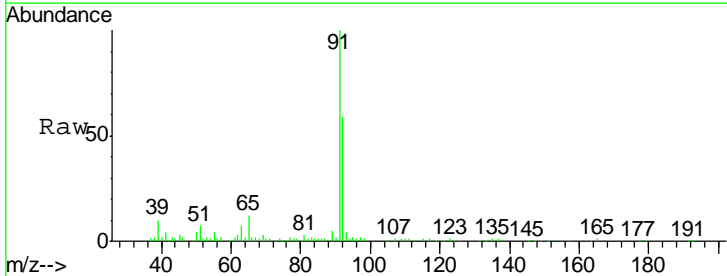
Instrument : MSVOA\_Y  
 ClientSampled : WP022SB458\_200113\_23-25

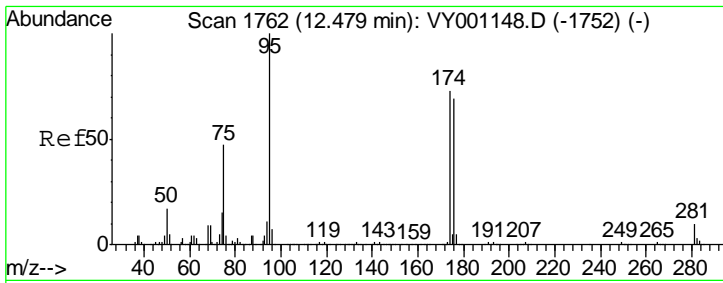
Tgt Ion: 98 Resp: 379139  
 Ion Ratio Lower Upper  
 98 100  
 100 65.8 53.1 79.7



#52  
 Toluene  
 Concen: 4.306 ug/l  
 RT: 10.25 min Scan# 1396  
 Delta R.T. 0.01 min  
 Lab File: VY001246.D  
 Acq: 16 Jan 2020 02:40

Tgt Ion: 92 Resp: 23450  
 Ion Ratio Lower Upper  
 92 100  
 91 168.5 136.6 204.8

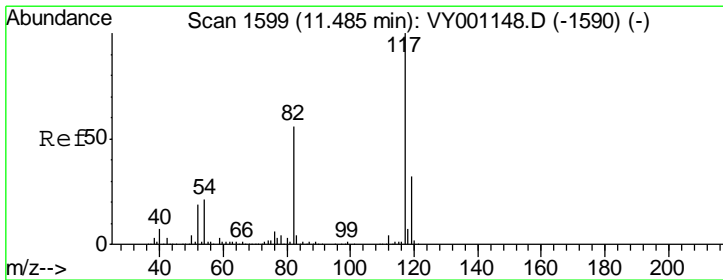
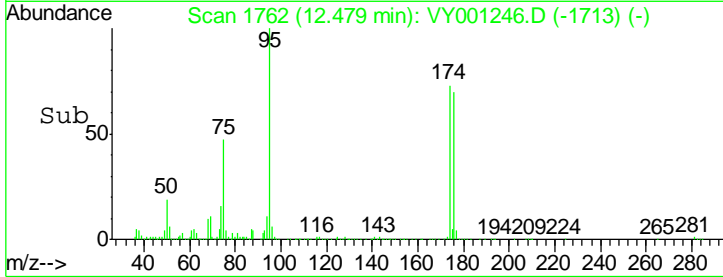
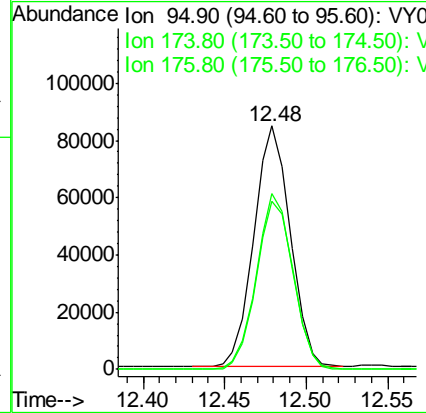
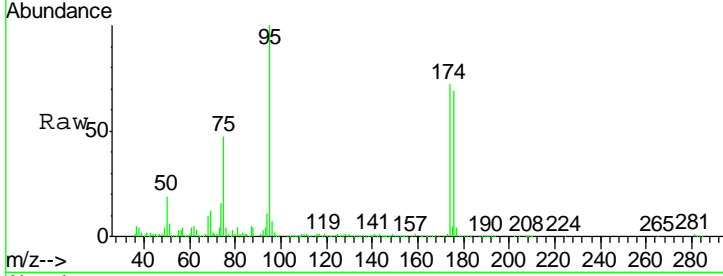




#62  
 4-Bromofluorobenzene  
 Concen: 43.982 ug/l  
 RT: 12.48 min Scan# 1762  
 Delta R.T. 0.00 min  
 Lab File: VY001246.D  
 Acq: 16 Jan 2020 02:40

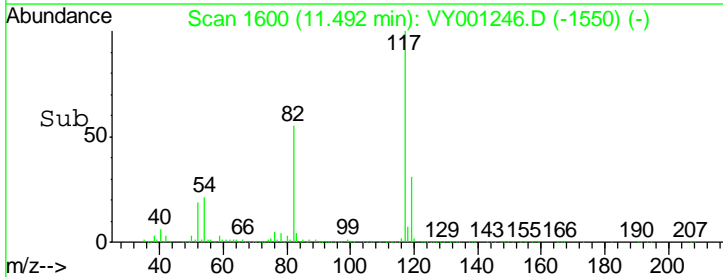
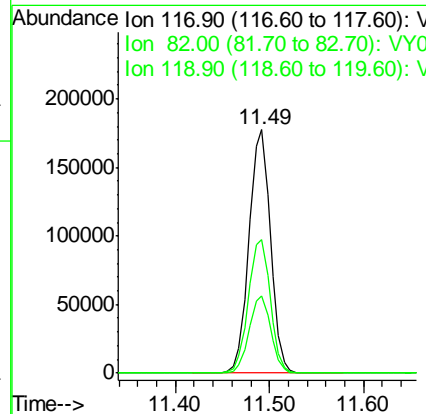
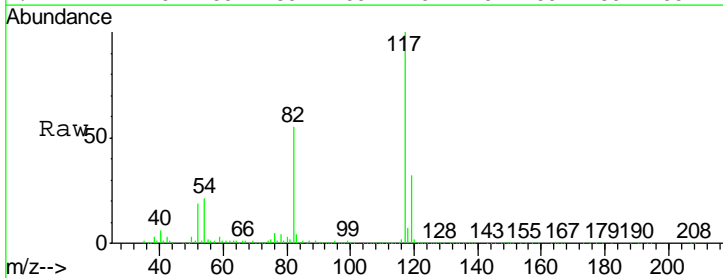
Instrument :  
 MSVOA\_Y  
 ClientSampled :  
 WP022SB458\_200113\_23-25

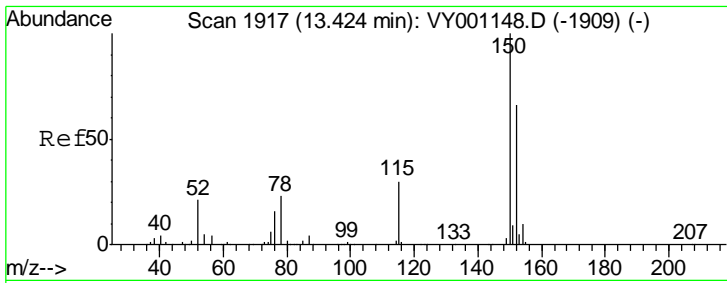
Tgt Ion	Resp	Lower	Upper
95	130184		
174	73.2	0.0	143.2
176	71.2	0.0	136.0



#63  
 Chlorobenzene-d5  
 Concen: 50.000 ug/l  
 RT: 11.49 min Scan# 1600  
 Delta R.T. 0.01 min  
 Lab File: VY001246.D  
 Acq: 16 Jan 2020 02:40

Tgt Ion	Resp	Lower	Upper
117	282441		
82	54.7	44.9	67.3
119	31.3	25.7	38.5

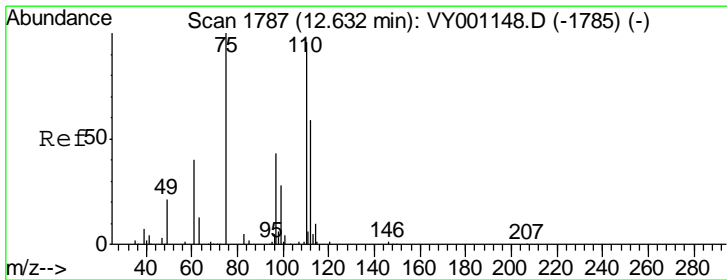
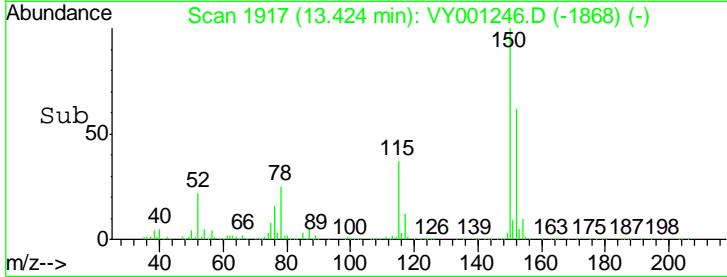
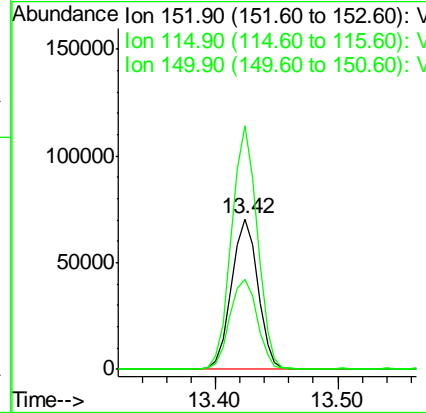
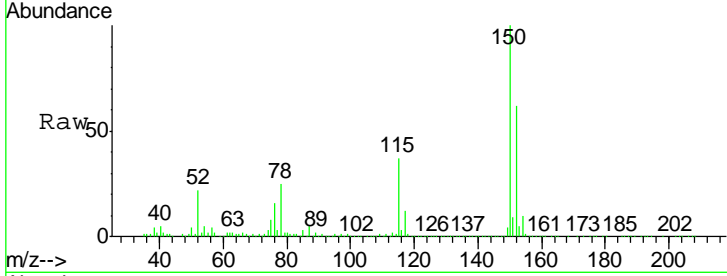




#72  
 1,4-Dichlorobenzene-d4  
 Concen: 50.000 ug/l  
 RT: 13.42 min Scan# 1917  
 Delta R.T. 0.00 min  
 Lab File: VY001246.D  
 Acq: 16 Jan 2020 02:40

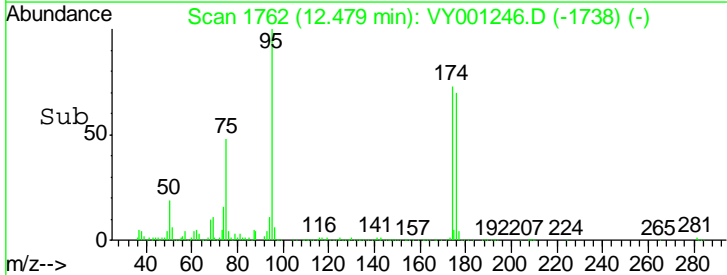
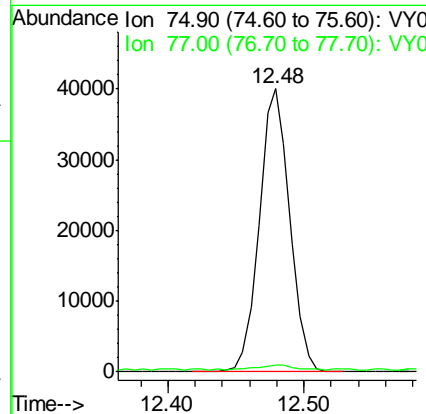
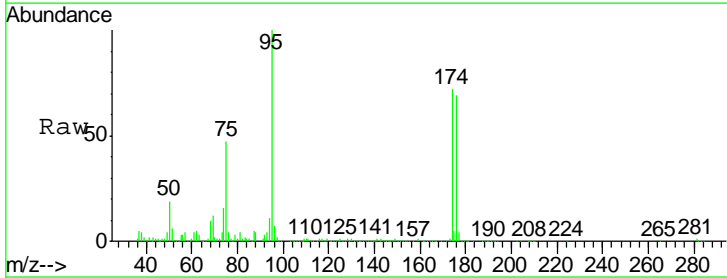
Instrument : MSVOA\_Y  
 ClientSampled : WP022SB458\_200113\_23-25

Tgt Ion	Resp	Lower	Upper
152	104920		
115	61.7	30.9	92.5
150	157.6	0.0	346.8

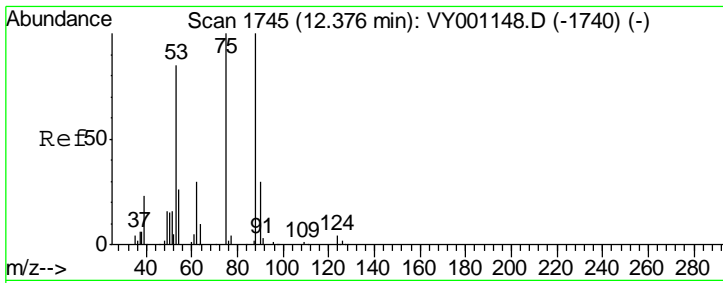


#76  
 1,2,3-Trichloropropane  
 Concen: 55.645 ug/l  
 RT: 12.48 min Scan# 1762  
 Delta R.T. -0.15 min  
 Lab File: VY001246.D  
 Acq: 16 Jan 2020 02:40

Tgt Ion	Resp	Lower	Upper
75	62499		
75	100		
77	3.0	0.0	0.0#







#81  
 trans-1,4-Dichloro-2-butene  
 Concen: 94.361 ug/l  
 RT: 12.48 min Scan# 1762  
 Delta R.T. 0.10 min  
 Lab File: VY001246.D  
 Acq: 16 Jan 2020 02:40

Instrument : MSVOA\_Y  
 ClientSampleId : WP022SB458\_200113\_23-25

Tgt Ion	Resp	Lower	Upper
75	100		
53	0.4	69.4	104.2#
89	0.2	0.0	0.0#

