

Data Path : Z:\voasrv\HPCHEM1\MSVOA_Y\Data\VY011923\
 Data File : VY012261.D
 Acq On : 19 Jan 2023 13:27
 Operator : KP/MD
 Sample : 01214-01
 Misc : 6.13g/5.0mL/MSVOA_Y/SOIL
 ALS Vial : 11 Sample Multiplier: 1

Instrument :
 MSVOA_Y
 ClientSampleId :
 TJRC-011723-B3-0-10

Integration Parameters: RTEINT.P
 Integrator: RTE
 Smoothing : ON Filtering: 5
 Sampling : 1 Min Area: 3 % of largest Peak
 Start Thrs: 0.2 Max Peaks: 100
 Stop Thrs : 0 Peak Location: TOP

If leading or trailing edge < 100 prefer < Baseline drop else tangent >
 Peak separation: 5

Method : Z:\voasrv\HPCHEM1\MSVOA_Y\methods\82Y011623S.M
 Title : SW846 8260

Signal : TIC: VY012261.D\data.ms

peak #	R.T. min	first scan	max scan	last scan	PK TY	peak height	corr. area	corr. % max.	% of total
1	4.716	464	475	486	rBV2	13687	42470	4.41%	0.819%
2	7.716	957	967	973	rBV	134177	324042	33.63%	6.250%
3	7.789	973	979	991	rVB	246734	556460	57.76%	10.733%
4	8.143	1028	1037	1050	rBV	131760	292382	30.35%	5.640%
5	8.691	1118	1127	1142	rBV	357854	705641	73.24%	13.611%
6	10.179	1363	1371	1389	rBV	561209	963454	100.00%	18.584%
7	11.490	1579	1586	1598	rBV	518400	842812	87.48%	16.257%
8	12.483	1742	1749	1759	rVB	412834	657973	68.29%	12.691%
9	12.806	1797	1802	1808	rVB4	8101	12307	1.28%	0.237%
10	13.428	1897	1904	1911	rVB	475972	741410	76.95%	14.301%
11	13.526	1916	1920	1928	rVB2	5908	9944	1.03%	0.192%
12	13.965	1987	1992	1998	rVB3	8948	14097	1.46%	0.272%
13	14.611	2094	2098	2103	rVB	6954	10422	1.08%	0.201%
14	15.434	2229	2233	2240	rVB3	6521	11005	1.14%	0.212%

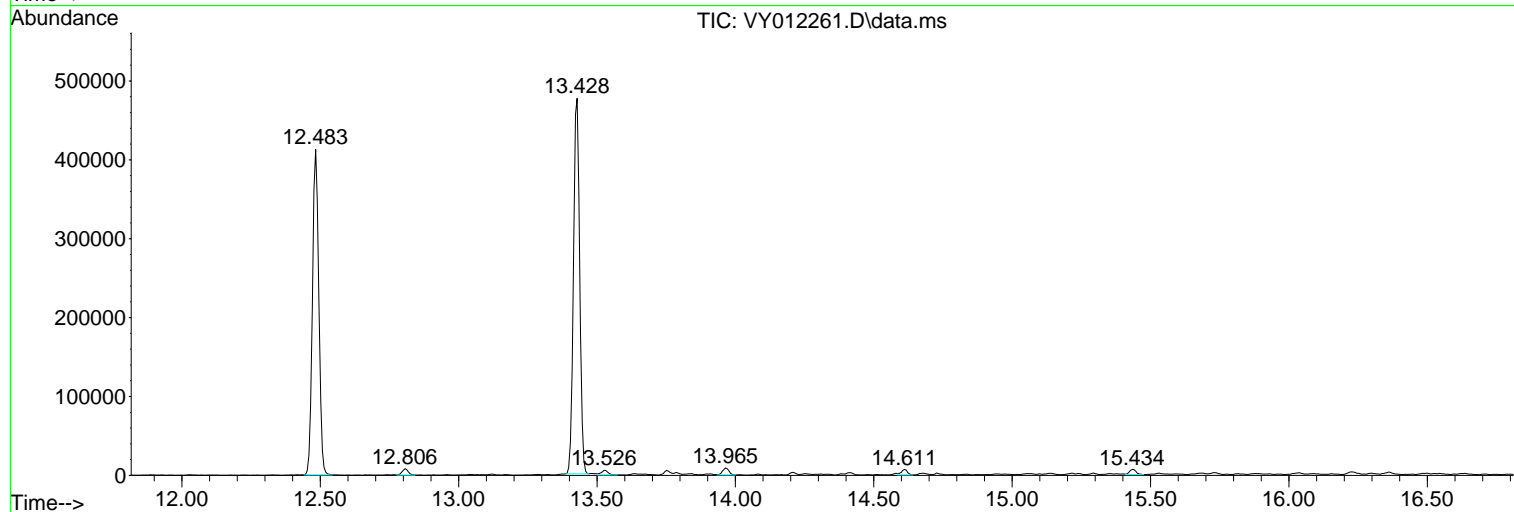
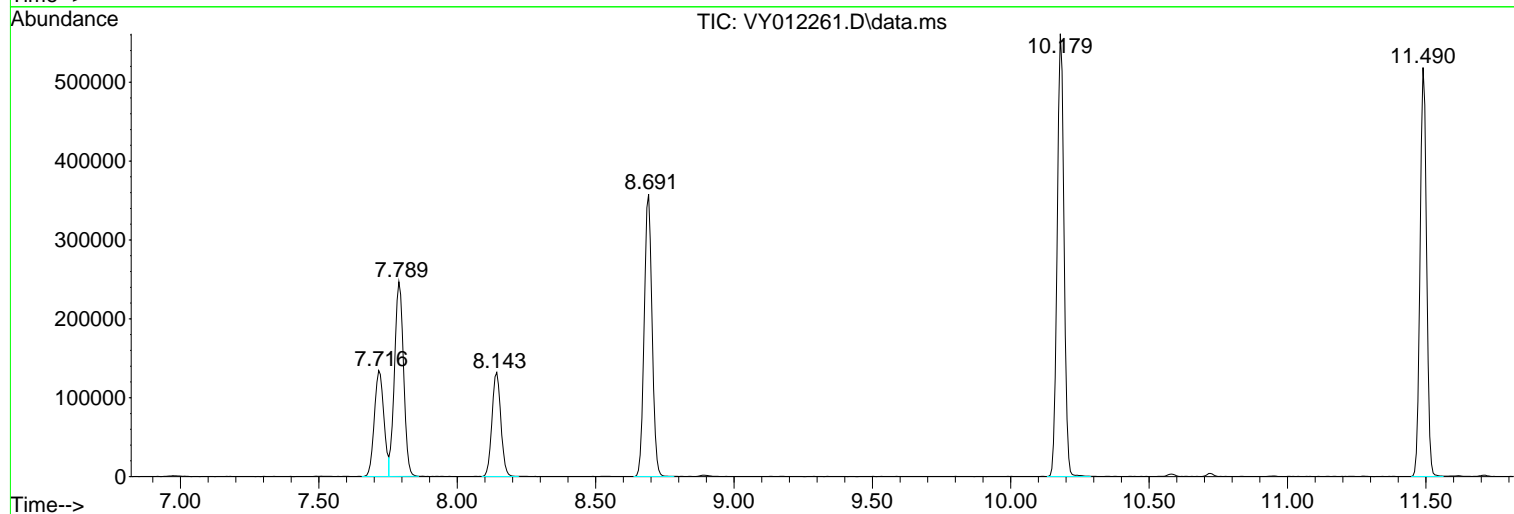
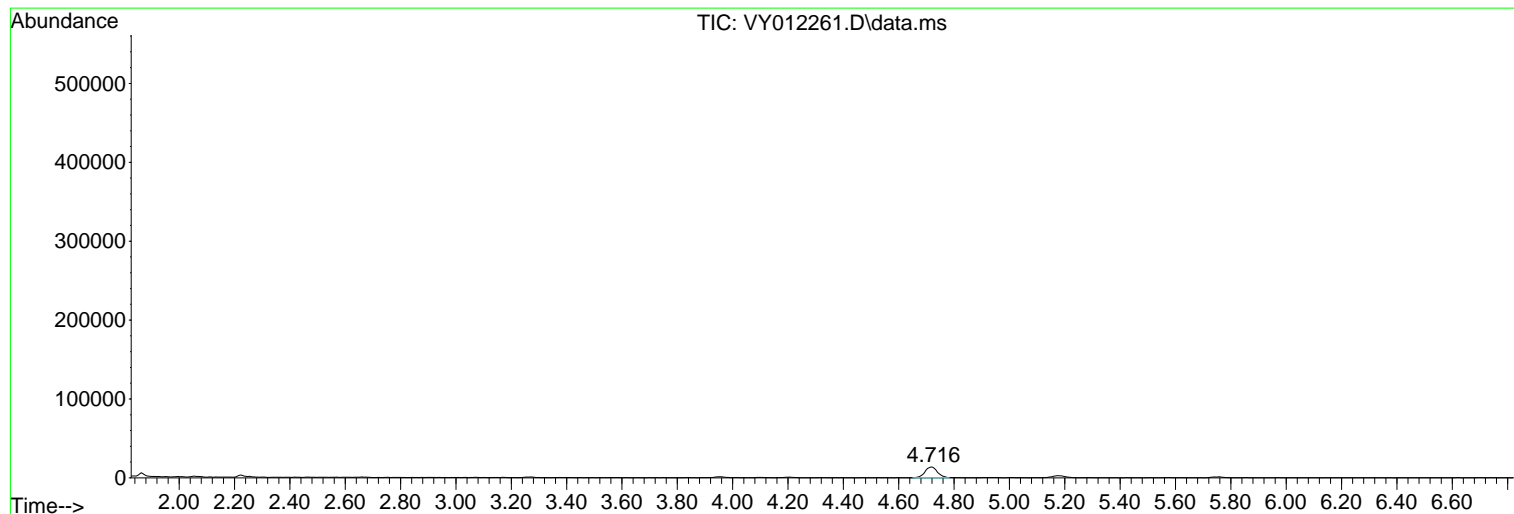
Sum of corrected areas: 5184419

Data Path : Z:\voasrv\HPCHEM1\MSVOA_Y\Data\VY011923\
Data File : VY012261.D
Acq On : 19 Jan 2023 13:27
Operator : KP/MD
Sample : 01214-01
Misc : 6.13g/5.0mL/MSVOA_Y/SOIL
ALS Vial : 11 Sample Multiplier: 1

Instrument :
MSVOA_Y
ClientSampleId :
TJRC-011723-B3-0-10

Quant Method : Z:\voasrv\HPCHEM1\MSVOA_Y\methods\82Y011623S.M
Quant Title : SW846 8260

TIC Library : C:\Database\NIST0.L
TIC Integration Parameters: LSCINT.P



Library Search Compound Report

Data Path : Z:\voasrv\HPCHEM1\MSVOA_Y\Data\VY011923\
Data File : VY012261.D
Acq On : 19 Jan 2023 13:27
Operator : KP/MD
Sample : 01214-01
Misc : 6.13g/5.0mL/MSVOA_Y/SOIL
ALS Vial : 11 Sample Multiplier: 1

Instrument :
MSVOA_Y
ClientSampleId :
TJRC-011723-B3-0-10

Quant Method : Z:\voasrv\HPCHEM1\MSVOA_Y\methods\82Y011623S.M
Quant Title : SW846 8260

TIC Library : C:\Database\NIST20.L
TIC Integration Parameters: LSCINT.P

No Library Search Compounds Detected

Data Path : Z:\voasrv\HPCHEM1\MSVOA_Y\Data\VY011923\
Data File : VY012261.D
Acq On : 19 Jan 2023 13:27
Operator : KP/MD
Sample : 01214-01
Misc : 6.13g/5.0mL/MSVOA_Y/SOIL
ALS Vial : 11 Sample Multiplier: 1

Instrument :
MSVOA_Y
ClientSampleId :
TJRC-011723-B3-0-10

Quant Method : Z:\voasrv\HPCHEM1\MSVOA_Y\methods\82Y011623S.M
Quant Title : SW846 8260

TIC Library : C:\Database\NIST20.L
TIC Integration Parameters: LSCINT.P

TIC Top Hit name	RT	EstConc	Units	Response	#	RT	Resp	Conc
------------------	----	---------	-------	----------	---	----	------	------
