

Data Path : Z:\VOASRV\HPCHEM1\MSVOA Y\DATA\VY012020\
 Data File : VY001306.D
 Acq On : 20 Jan 2020 19:13
 Operator : SY/MD
 Sample : L1210-03
 Misc : 7.21G/5ML/MSVOA Y/SOIL
 ALS Vial : 18 Sample Multiplier: 1

Instrument :
 MSVOA_Y
 ClientSampleId :
 Q012-SB3

Integration Parameters: RTEINT.P

Integrator: RTE
 Smoothing : ON Filtering: 5
 Sampling : 1 Min Area: 3 % of largest Peak
 Start Thrs: 0.2 Max Peaks: 100
 Stop Thrs : 0 Peak Location: TOP

If leading or trailing edge < 100 prefer < Baseline drop else tangent >
 Peak separation: 5

Method : Z:\VOASRV\HPCHEM1\MSVOA_Y\METHODS\82Y011020S.M
 Title : SW846 8260

Signal : TIC

peak #	R.T. min	first scan	max scan	last scan	PK TY	peak height	corr. area	corr. % max.	% of total
1	1.877	18	23	31	rVB	26999	41517	4.05%	0.733%
2	4.742	480	493	503	rBV2	21023	65226	6.36%	1.152%
3	7.748	976	986	991	rBV2	136761	321491	31.35%	5.677%
4	7.815	991	997	1009	rVB	226540	529474	51.64%	9.350%
5	8.169	1045	1055	1068	rVB2	143307	312918	30.52%	5.526%
6	8.711	1136	1144	1153	rBV	379440	745785	72.73%	13.170%
7	10.199	1379	1388	1396	rBV	591336	1025354	100.00%	18.106%
8	11.503	1594	1602	1611	rBV	568242	907920	88.55%	16.033%
9	12.491	1756	1764	1771	rBV	464003	710284	69.27%	12.543%
10	12.814	1812	1817	1821	rBV6	6134	11626	1.13%	0.205%
11	13.430	1912	1918	1926	rBV	576455	916239	89.36%	16.180%
12	13.753	1965	1971	1976	rBV7	9899	17748	1.73%	0.313%
13	14.265	2050	2055	2060	rBV6	7206	14621	1.43%	0.258%
14	14.424	2076	2081	2086	rVB6	10229	18991	1.85%	0.335%
15	14.619	2109	2113	2118	rVB5	7170	10389	1.01%	0.183%
16	15.240	2209	2215	2219	rBV2	7223	13347	1.30%	0.236%

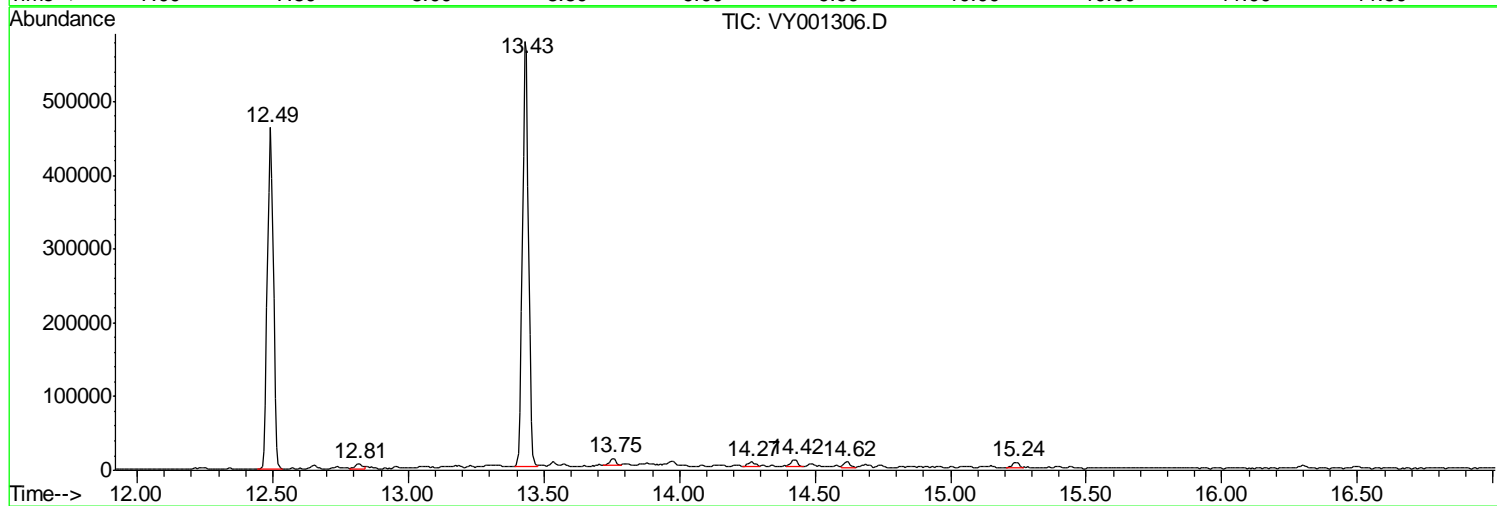
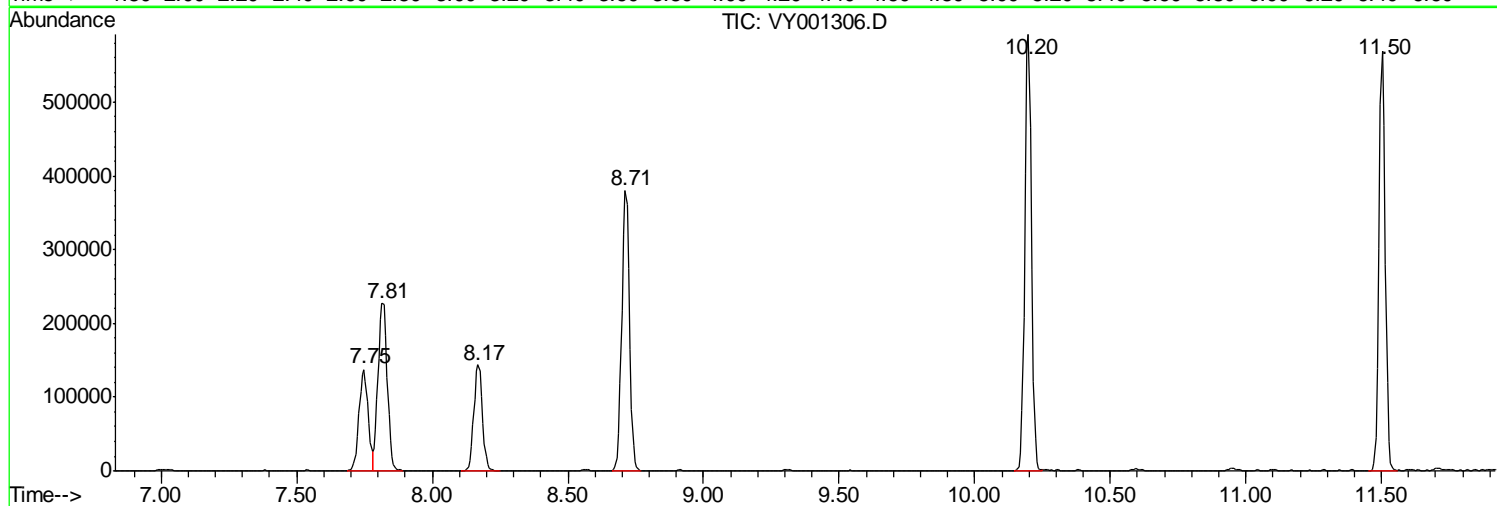
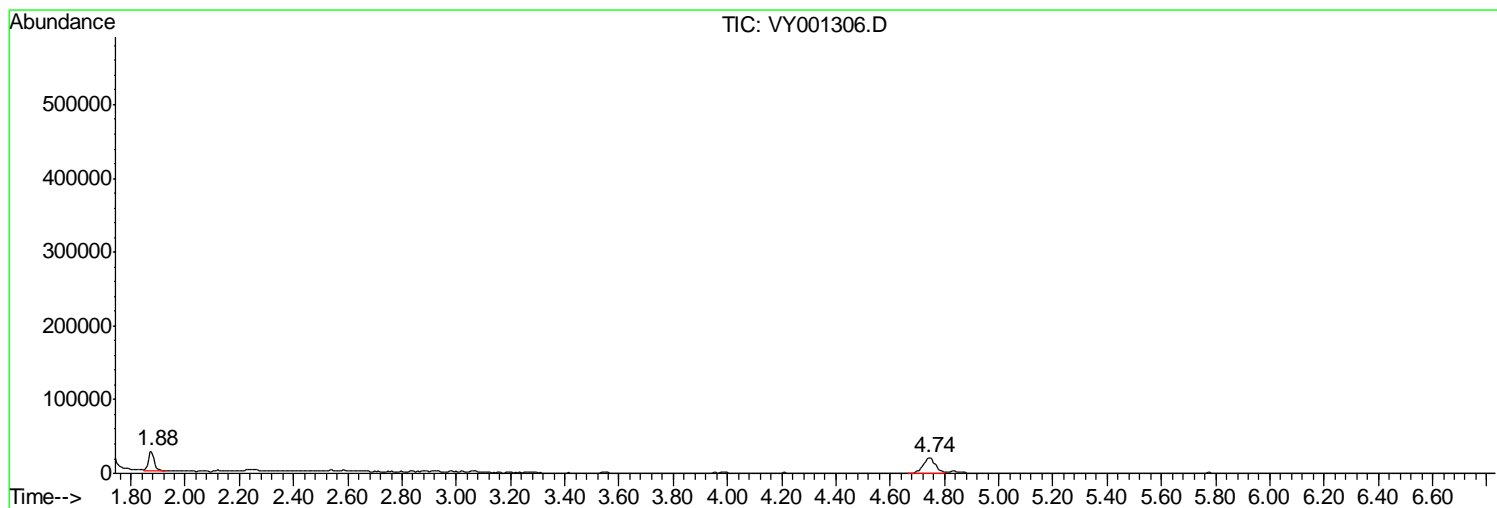
Sum of corrected areas: 5662930

Data Path : Z:\VOASRV\HPCHEM1\MSVOA Y\DATA\VY012020\
 Data File : VY001306.D
 Acq On : 20 Jan 2020 19:13
 Operator : SY/MD
 Sample : L1210-03
 Misc : 7.21G/5ML/MSVOA Y/SOIL
 ALS Vial : 18 Sample Multiplier: 1

Instrument :
 MSVOA_Y
 ClientSampleId :
 Q012-SB3

Quant Method : Z:\VOASRV\HPCHEM1\MSVOA_Y\METHODS\82Y011020S.M
 Quant Title : SW846 8260

TIC Library : C:\DATABASE\NIST11.L
 TIC Integration Parameters: LSCINT.P



Data Path : Z:\VOASRV\HPCHEM1\MSVOA_Y\DATA\VY012020\
Data File : VY001306.D
Acq On : 20 Jan 2020 19:13
Operator : SY/MD
Sample : L1210-03
Misc : 7.21G/5ML/MSVOA_Y/SOIL
ALS Vial : 18 Sample Multiplier: 1

Instrument :
MSVOA_Y
ClientSampleId :
Q012-SB3

Quant Method : Z:\VOASRV\HPCHEM1\MSVOA_Y\METHODS\82Y011020S.M
Quant Title : SW846 8260

TIC Library : C:\DATABASE\NIST11.L
TIC Integration Parameters: LSCINT.P

No Library Search Compounds Detected

Data Path : Z:\VOASRV\HPCHEM1\MSVOA_Y\DATA\VY012020\
Data File : VY001306.D
Acq On : 20 Jan 2020 19:13
Operator : SY/MD
Sample : L1210-03
Misc : 7.21G/5ML/MSVOA_Y/SOIL
ALS Vial : 18 Sample Multiplier: 1

Instrument :
MSVOA_Y
ClientSampleId :
Q012-SB3

Quant Method : Z:\VOASRV\HPCHEM1\MSVOA_Y\METHODS\82Y011020S.M
Quant Title : SW846 8260

TIC Library : C:\DATABASE\NIST11.L
TIC Integration Parameters: LSCINT.P

TIC Top Hit name	RT	EstConc	Units	Response	--Internal Standard--			
					#	RT	Resp	Conc
