

Data Path : Z:\voasrv\HPCHEM1\MSVOA\_Y\Data\VY012025\  
 Data File : VY020879.D  
 Acq On : 20 Jan 2025 14:15  
 Operator : SY/MD  
 Sample : Q1132-01  
 Misc : 5.05g/5.0mL/MSVOA\_Y/SOIL  
 ALS Vial : 12 Sample Multiplier: 1

Instrument :  
 MSVOA\_Y  
 ClientSampleId :

Quant Time: Jan 21 00:41:52 2025  
 Quant Method : Z:\voasrv\HPCHEM1\MSVOA\_Y\methods\82Y010625S.M  
 Quant Title : SW846 8260  
 QLast Update : Tue Jan 07 01:31:46 2025  
 Response via : Initial Calibration

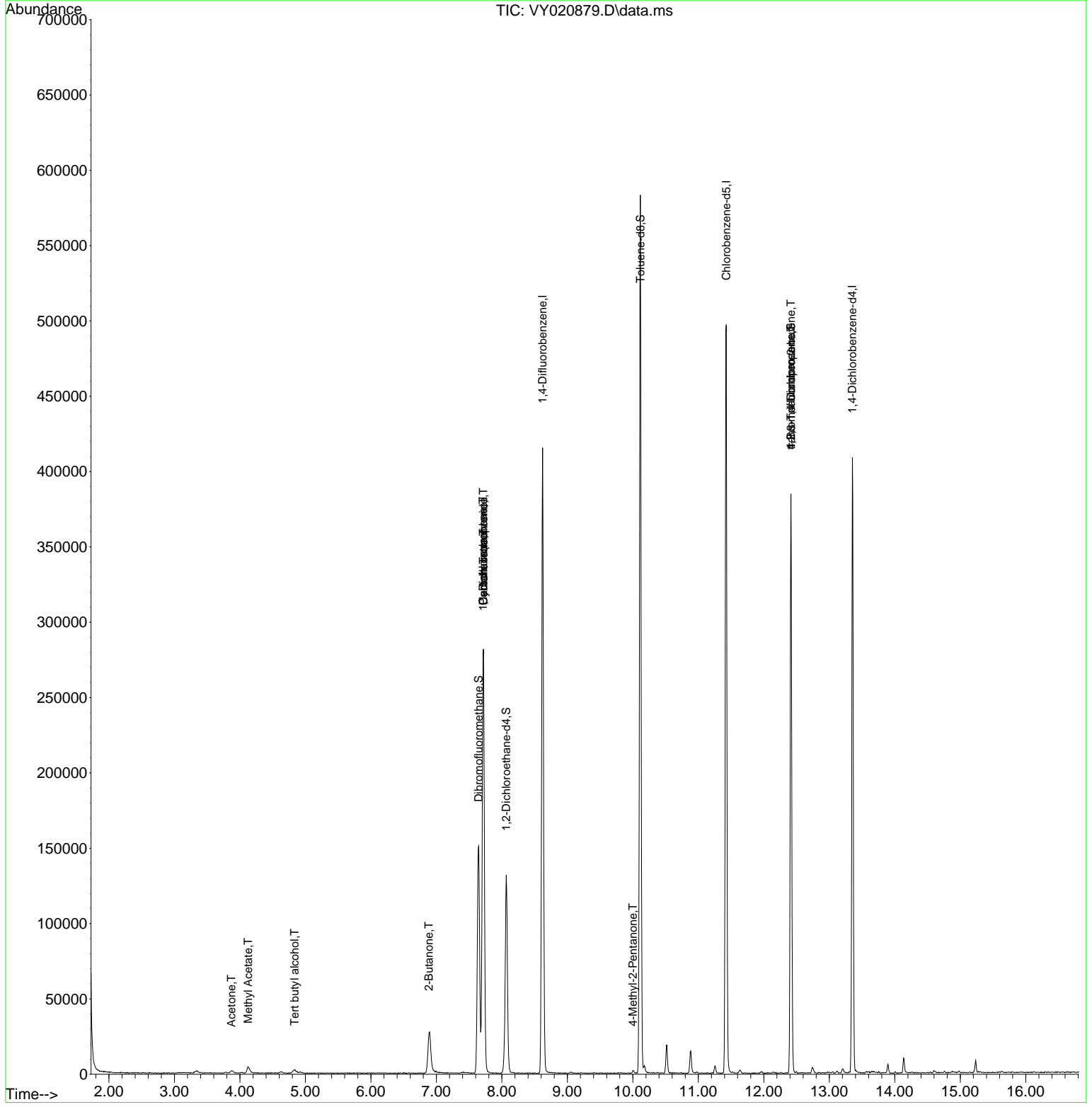
Compound	R.T.	QIon	Response	Conc	Units	Dev(Min)
-----						
Internal Standards						
1) Pentafluorobenzene	7.719	168	233863	50.000	ug/l	0.00
34) 1,4-Difluorobenzene	8.621	114	361460	50.000	ug/l	0.00
63) Chlorobenzene-d5	11.426	117	282473	50.000	ug/l	0.00
72) 1,4-Dichlorobenzene-d4	13.352	152	110670	50.000	ug/l	0.00
System Monitoring Compounds						
33) 1,2-Dichloroethane-d4	8.067	65	100742	50.681	ug/l	0.00
Spiked Amount	50.000	Range	50 - 163	Recovery	=	101.360%
35) Dibromofluoromethane	7.646	113	110321	48.717	ug/l	0.00
Spiked Amount	50.000	Range	54 - 147	Recovery	=	97.440%
50) Toluene-d8	10.115	98	390221	49.432	ug/l	0.00
Spiked Amount	50.000	Range	58 - 134	Recovery	=	98.860%
62) 4-Bromofluorobenzene	12.413	95	112817	38.700	ug/l	0.00
Spiked Amount	50.000	Range	29 - 146	Recovery	=	77.400%
Target Compounds						
					Qvalue	
11) Tert butyl alcohol	4.835	59	2545	16.944	ug/l #	73
16) Acetone	3.872	43	3239	11.459	ug/l #	71
18) Methyl Acetate	4.128	43	1563	1.638	ug/l #	46
25) 2-Butanone	6.884	43	1494	3.218	ug/l #	45
31) Cyclohexane	7.719	56	3894	1.346	ug/l #	1
36) 1,1-Dichloropropene	7.713	75	16306	5.645	ug/l #	50
38) Carbon Tetrachloride	7.719	117	22247	5.533	ug/l #	15
51) 4-Methyl-2-Pentanone	9.999	43	1345	1.152	ug/l	91
76) 1,2,3-Trichloropropane	12.413	75	56556	58.405	ug/l #	100
81) trans-1,4-Dichloro-2-b...	12.413	75	56556	123.149	ug/l #	14
-----						

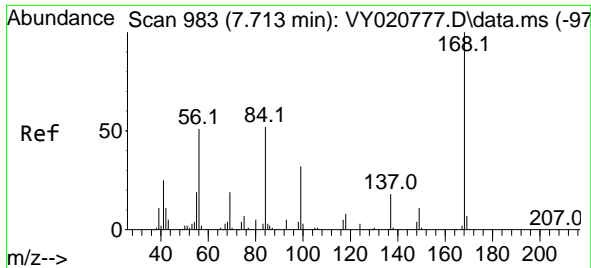
(#) = qualifier out of range (m) = manual integration (+) = signals summed

Data Path : Z:\voasrv\HPCHEM1\MSVOA\_Y\Data\VY012025\  
 Data File : VY020879.D  
 Acq On : 20 Jan 2025 14:15  
 Operator : SY/MD  
 Sample : Q1132-01  
 Misc : 5.05g/5.0mL/MSVOA\_Y/SOIL  
 ALS Vial : 12 Sample Multiplier: 1

Instrument :  
 MSVOA\_Y  
 ClientSampleId :

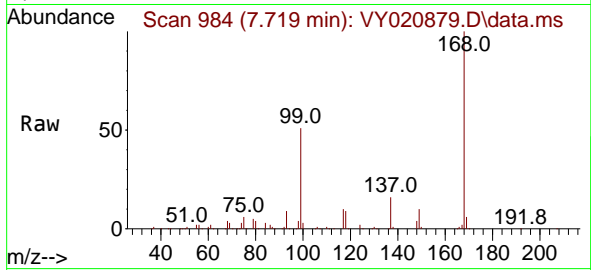
Quant Time: Jan 21 00:41:52 2025  
 Quant Method : Z:\voasrv\HPCHEM1\MSVOA\_Y\methods\82Y010625S.M  
 Quant Title : SW846 8260  
 QLast Update : Tue Jan 07 01:31:46 2025  
 Response via : Initial Calibration



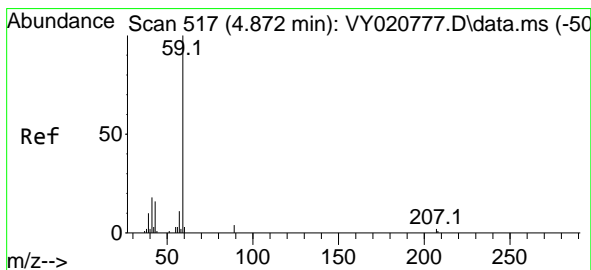
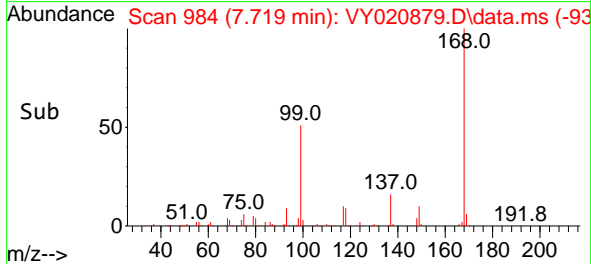
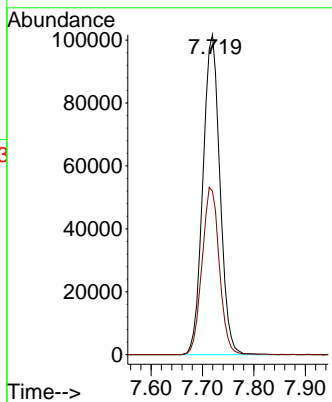


#1  
 Pentafluorobenzene  
 Concen: 50.000 ug/l  
 RT: 7.719 min Scan# 91  
 Delta R.T. 0.006 min  
 Lab File: VY020879.D  
 Acq: 20 Jan 2025 14:15

Instrument :  
 MSVOA\_Y  
 ClientSampleId :

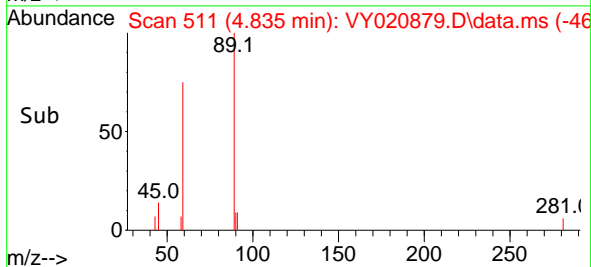
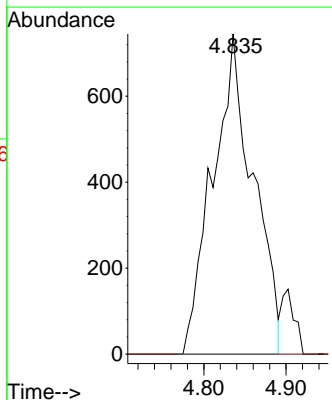
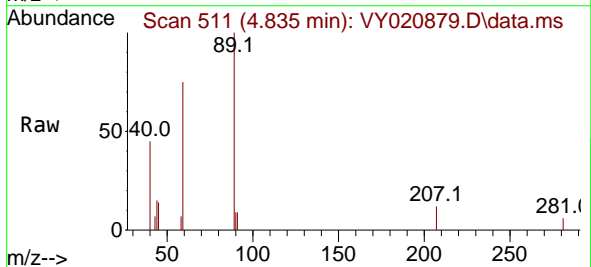


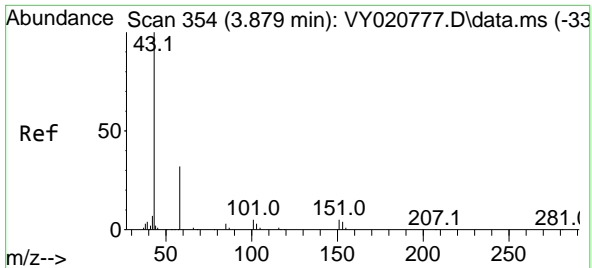
Tgt Ion:168 Resp: 233863  
 Ion Ratio Lower Upper  
 168 100  
 99 51.1 44.3 66.5



#11  
 Tert butyl alcohol  
 Concen: 16.944 ug/l  
 RT: 4.835 min Scan# 511  
 Delta R.T. -0.037 min  
 Lab File: VY020879.D  
 Acq: 20 Jan 2025 14:15

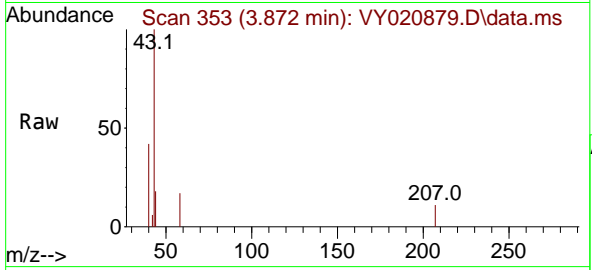
Tgt Ion: 59 Resp: 2545  
 Ion Ratio Lower Upper  
 59 100  
 57 0.0 7.8 11.8#



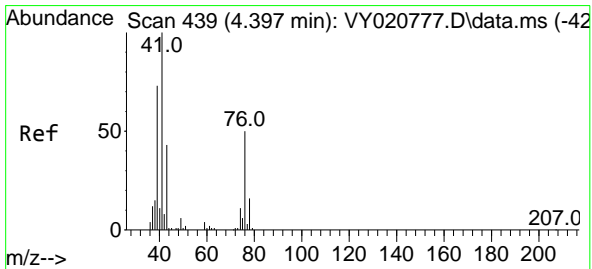
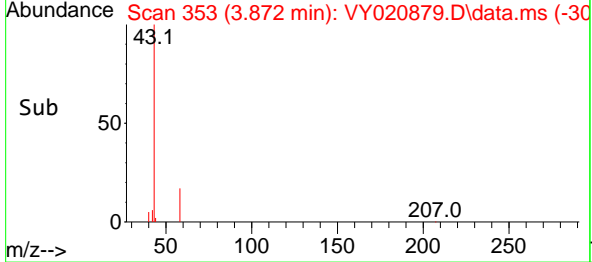
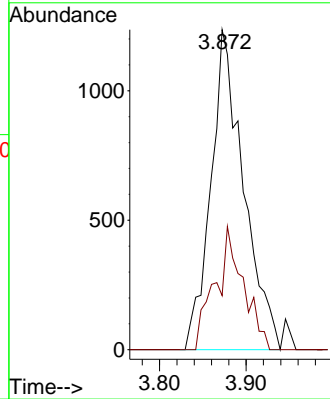


#16  
 Acetone  
 Concen: 11.459 ug/l  
 RT: 3.872 min Scan# 311  
 Delta R.T. -0.006 min  
 Lab File: VY020879.D  
 Acq: 20 Jan 2025 14:15

Instrument :  
 MSVOA\_Y  
 ClientSampleId :

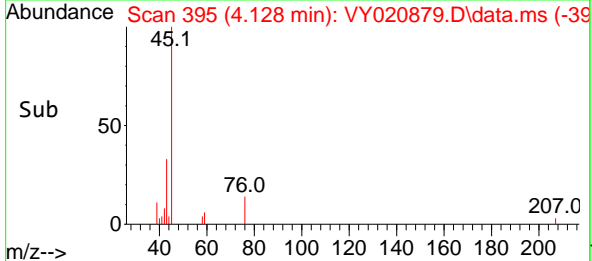
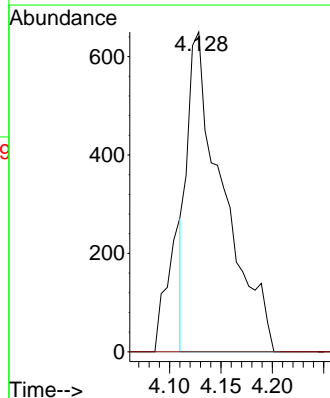
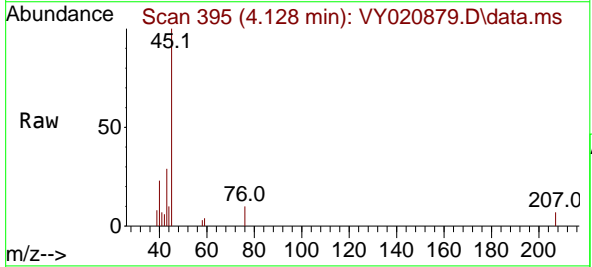


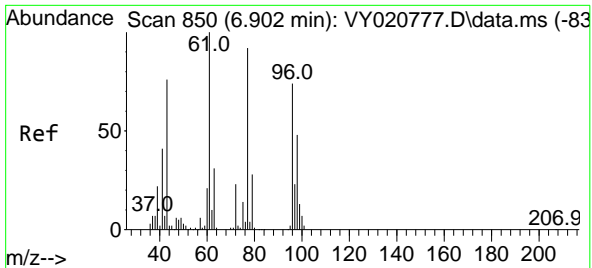
Tgt Ion: 43 Resp: 3239  
 Ion Ratio Lower Upper  
 43 100  
 58 16.9 26.7 40.1#



#18  
 Methyl Acetate  
 Concen: 1.638 ug/l  
 RT: 4.128 min Scan# 395  
 Delta R.T. -0.269 min  
 Lab File: VY020879.D  
 Acq: 20 Jan 2025 14:15

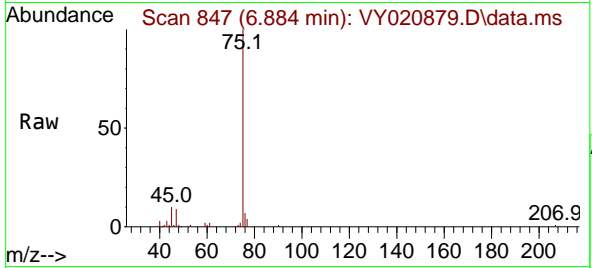
Tgt Ion: 43 Resp: 1563  
 Ion Ratio Lower Upper  
 43 100  
 74 0.0 23.0 34.6#



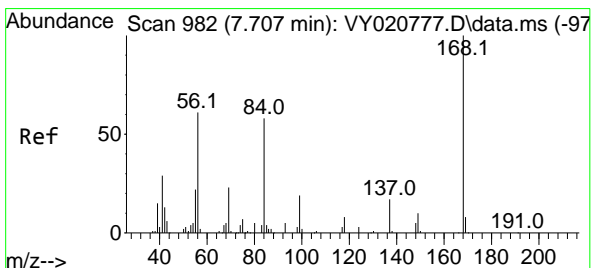
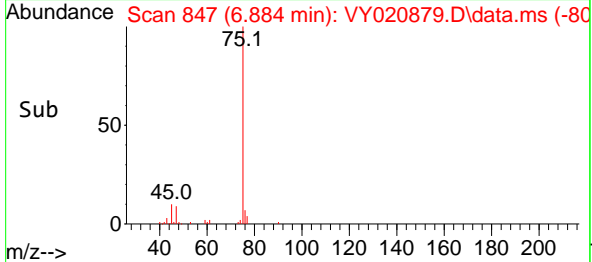
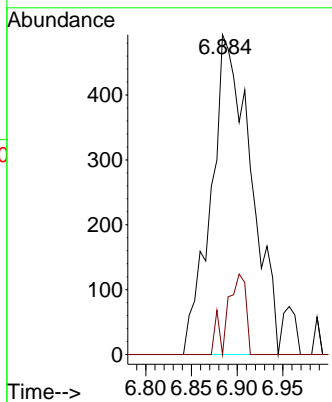


#25  
 2-Butanone  
 Concen: 3.218 ug/l  
 RT: 6.884 min Scan# 847  
 Delta R.T. -0.019 min  
 Lab File: VY020879.D  
 Acq: 20 Jan 2025 14:15

Instrument :  
 MSVOA\_Y  
 ClientSampleId :

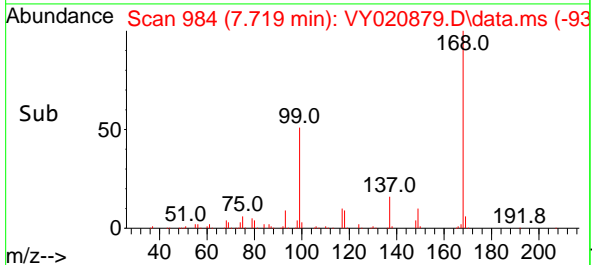
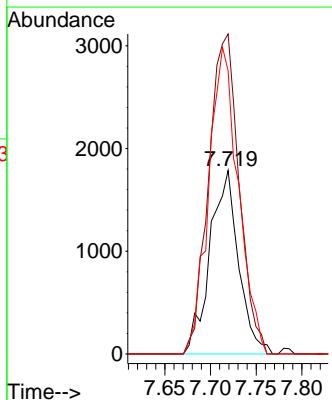
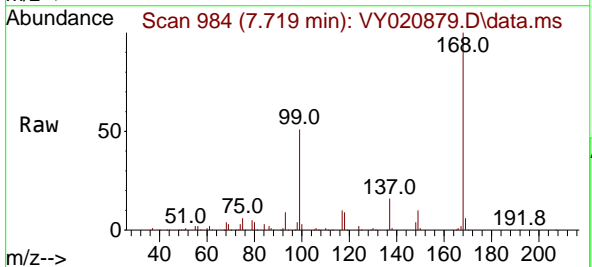


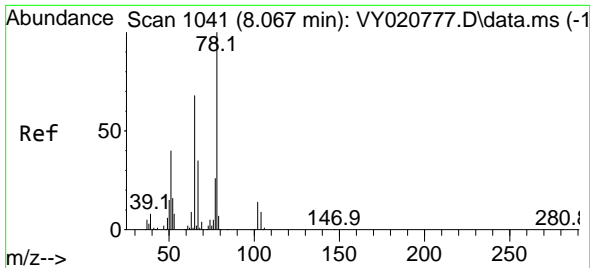
Tgt Ion: 43 Resp: 1494  
 Ion Ratio Lower Upper  
 43 100  
 72 0.0 24.0 36.0#



#31  
 Cyclohexane  
 Concen: 1.346 ug/l  
 RT: 7.719 min Scan# 984  
 Delta R.T. 0.012 min  
 Lab File: VY020879.D  
 Acq: 20 Jan 2025 14:15

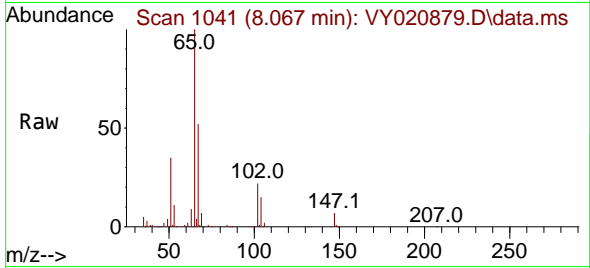
Tgt Ion: 56 Resp: 3894  
 Ion Ratio Lower Upper  
 56 100  
 69 174.4 30.5 45.7#  
 84 154.4 76.6 115.0#



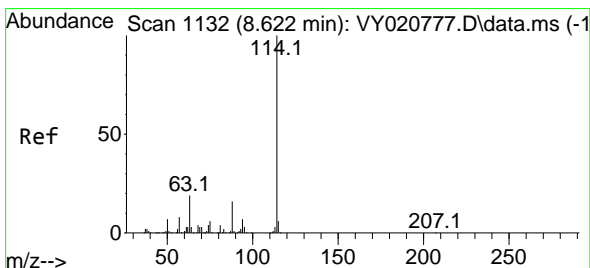
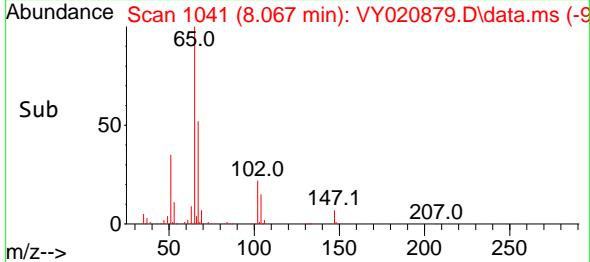
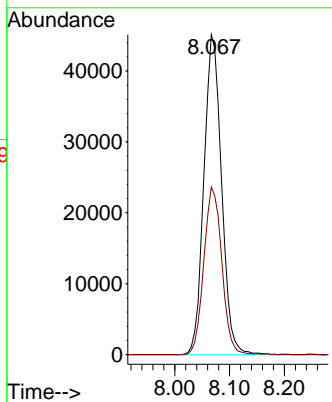


#33  
 1,2-Dichloroethane-d4  
 Concen: 50.681 ug/l  
 RT: 8.067 min Scan# 1041  
 Delta R.T. -0.000 min  
 Lab File: VY020879.D  
 Acq: 20 Jan 2025 14:15

Instrument : MSVOA\_Y  
 ClientSampleId :

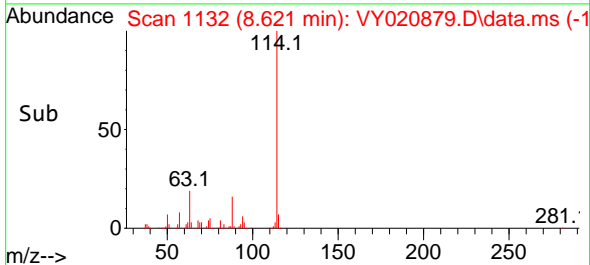
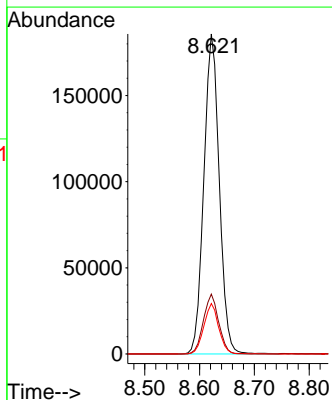
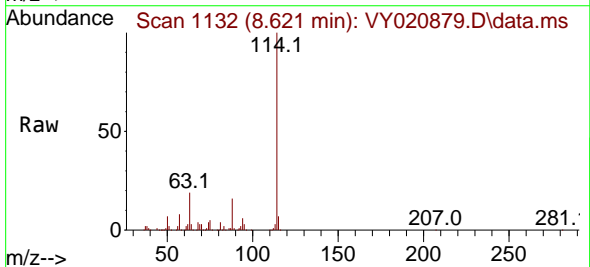


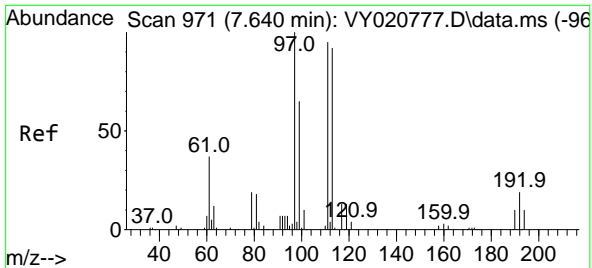
Tgt Ion: 65 Resp: 100742  
 Ion Ratio Lower Upper  
 65 100  
 67 53.5 0.0 102.8



#34  
 1,4-Difluorobenzene  
 Concen: 50.000 ug/l  
 RT: 8.621 min Scan# 1132  
 Delta R.T. -0.000 min  
 Lab File: VY020879.D  
 Acq: 20 Jan 2025 14:15

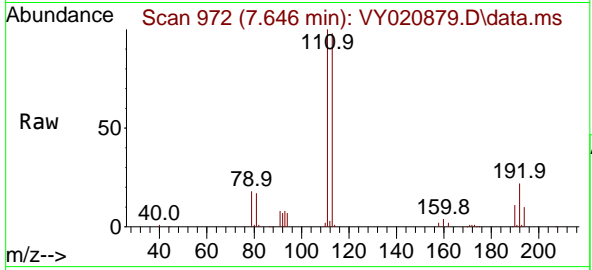
Tgt Ion:114 Resp: 361460  
 Ion Ratio Lower Upper  
 114 100  
 63 18.7 0.0 38.4  
 88 15.8 0.0 31.2



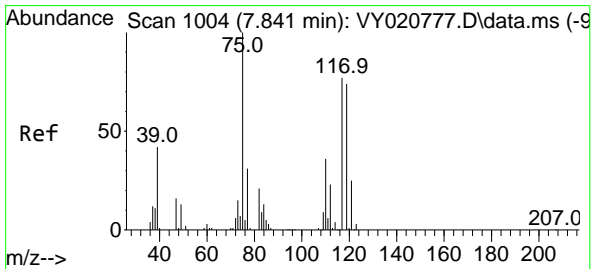
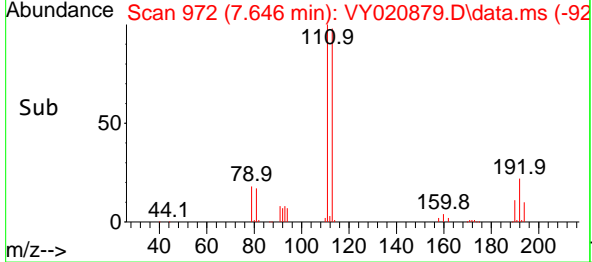
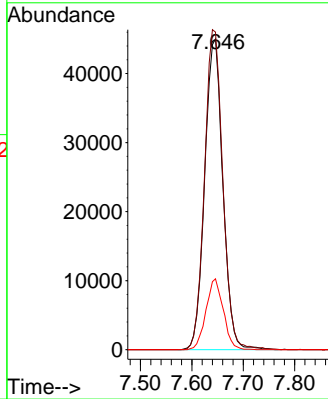


#35  
 Dibromofluoromethane  
 Concen: 48.717 ug/l  
 RT: 7.646 min Scan# 91  
 Delta R.T. 0.006 min  
 Lab File: VY020879.D  
 Acq: 20 Jan 2025 14:15

Instrument :  
 MSVOA\_Y  
 ClientSampleId :

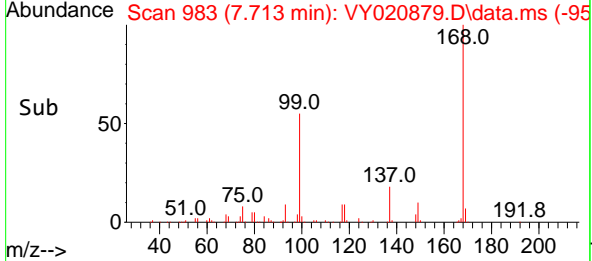
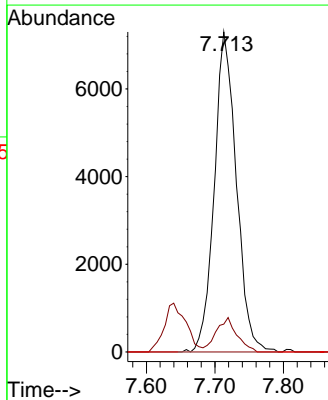
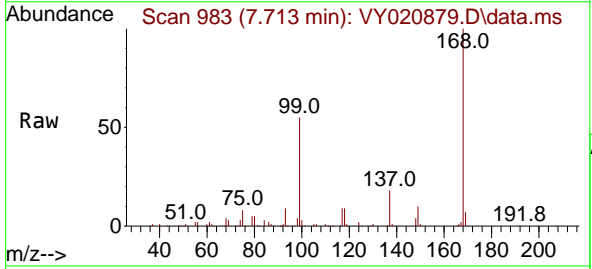


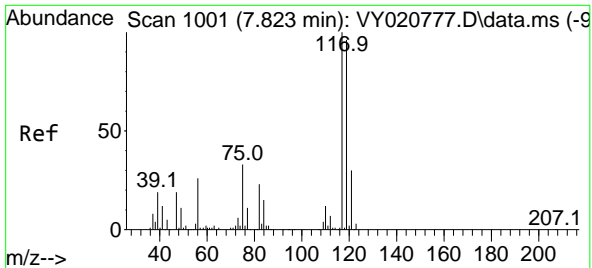
Tgt Ion:113 Resp: 110321  
 Ion Ratio Lower Upper  
 113 100  
 111 103.7 81.7 122.5  
 192 21.8 16.7 25.1



#36  
 1,1-Dichloropropene  
 Concen: 5.645 ug/l  
 RT: 7.713 min Scan# 983  
 Delta R.T. -0.128 min  
 Lab File: VY020879.D  
 Acq: 20 Jan 2025 14:15

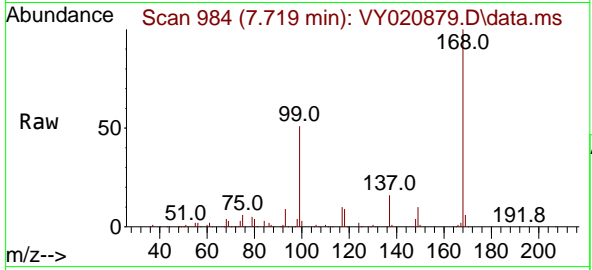
Tgt Ion: 75 Resp: 16306  
 Ion Ratio Lower Upper  
 75 100  
 110 10.1 18.5 55.5#  
 77 0.0 25.0 37.4#



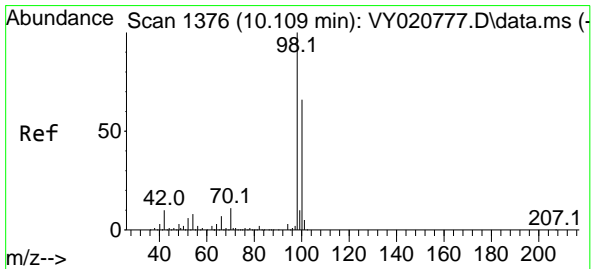
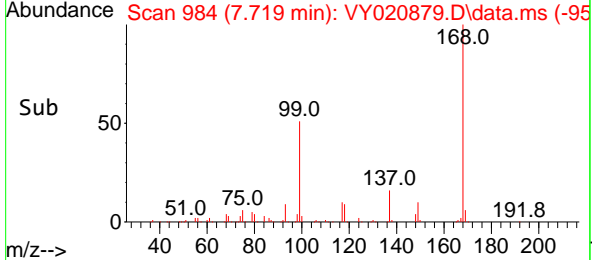
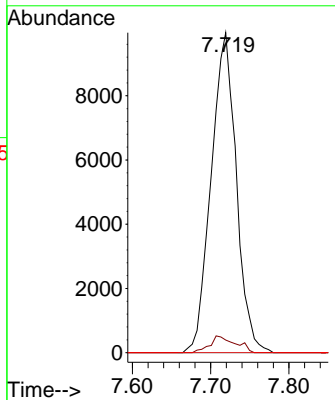


#38  
 Carbon Tetrachloride  
 Concen: 5.533 ug/l  
 RT: 7.719 min Scan# 91  
 Delta R.T. -0.104 min  
 Lab File: VY020879.D  
 Acq: 20 Jan 2025 14:15

Instrument : MSVOA\_Y  
 ClientSampleId :

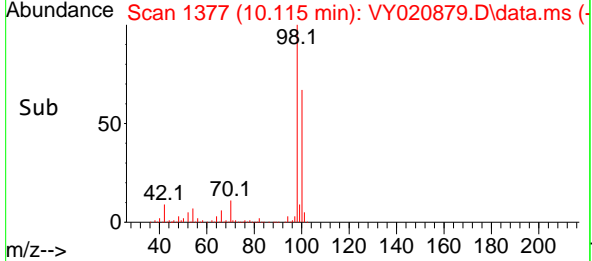
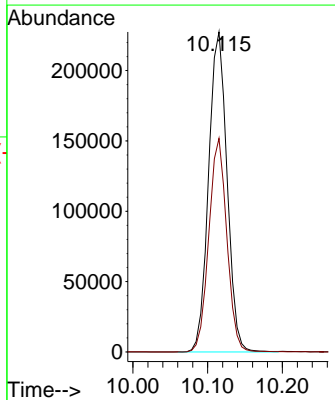
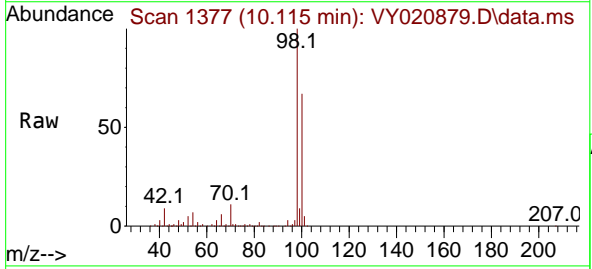


Tgt Ion:117 Resp: 22247  
 Ion Ratio Lower Upper  
 117 100  
 119 4.0 76.5 114.7#  
 121 0.0 24.3 36.5#

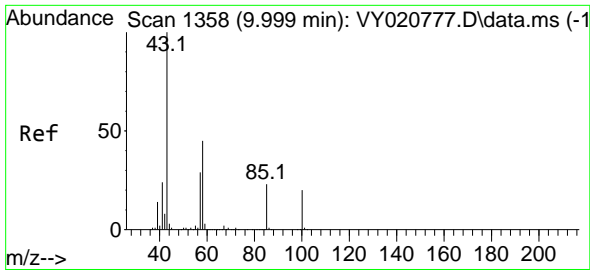


#50  
 Toluene-d8  
 Concen: 49.432 ug/l  
 RT: 10.115 min Scan# 1377  
 Delta R.T. 0.006 min  
 Lab File: VY020879.D  
 Acq: 20 Jan 2025 14:15

Tgt Ion: 98 Resp: 390221  
 Ion Ratio Lower Upper  
 98 100  
 100 65.3 52.5 78.7

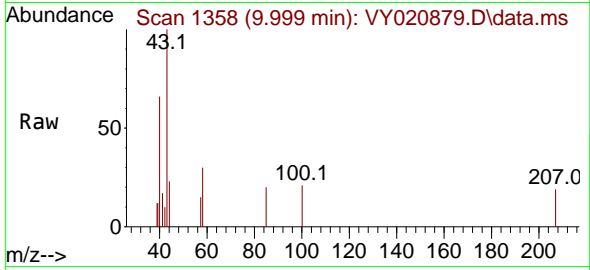




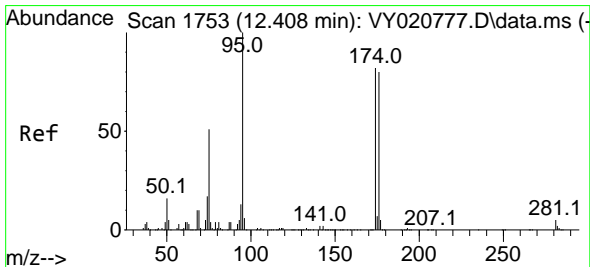
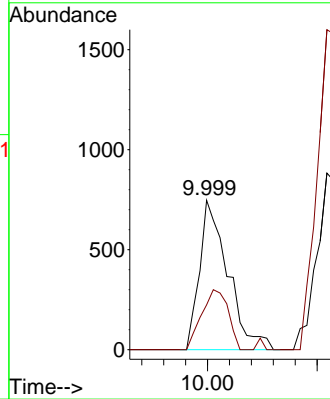
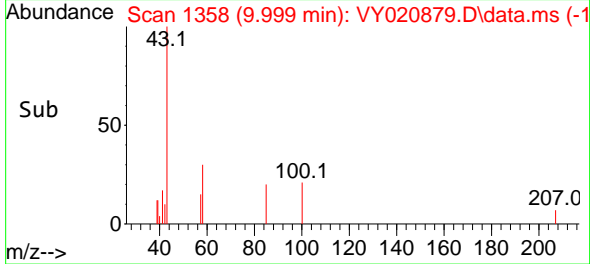


#51  
 4-Methyl-2-Pentanone  
 Concen: 1.152 ug/l  
 RT: 9.999 min Scan# 11  
 Delta R.T. -0.000 min  
 Lab File: VY020879.D  
 Acq: 20 Jan 2025 14:15

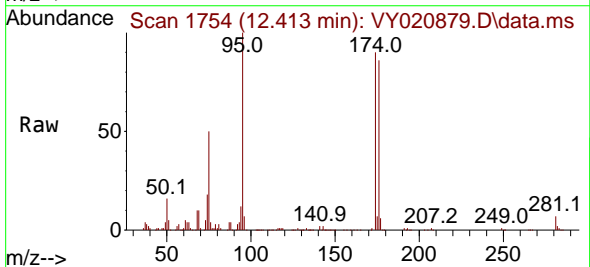
Instrument :  
 MSVOA\_Y  
 ClientSampleId :



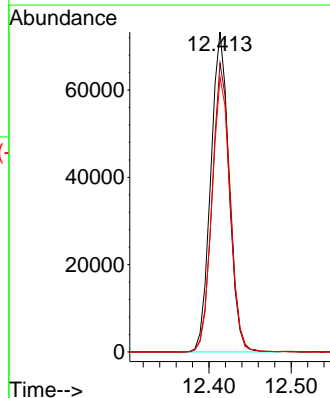
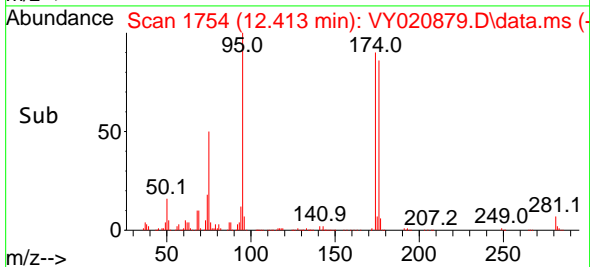
Tgt Ion: 43 Resp: 1345  
 Ion Ratio Lower Upper  
 43 100  
 58 37.5 34.8 52.2

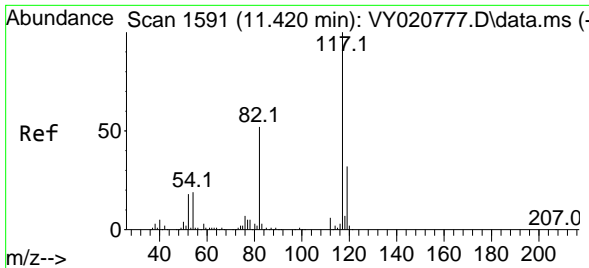


#62  
 4-Bromofluorobenzene  
 Concen: 38.700 ug/l  
 RT: 12.413 min Scan# 1754  
 Delta R.T. 0.006 min  
 Lab File: VY020879.D  
 Acq: 20 Jan 2025 14:15



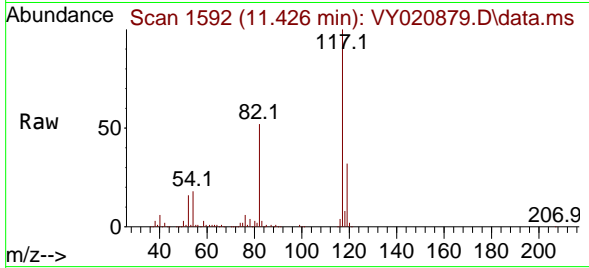
Tgt Ion: 95 Resp: 112817  
 Ion Ratio Lower Upper  
 95 100  
 174 89.2 0.0 178.0  
 176 85.9 0.0 172.0



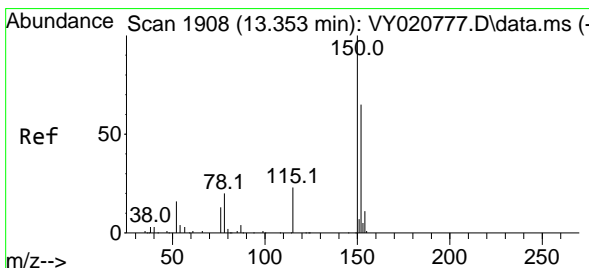
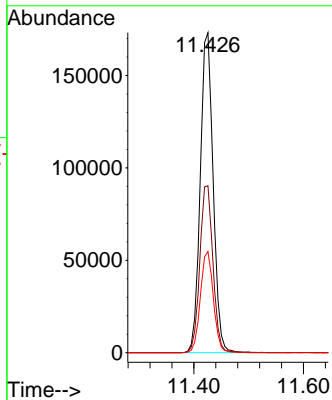
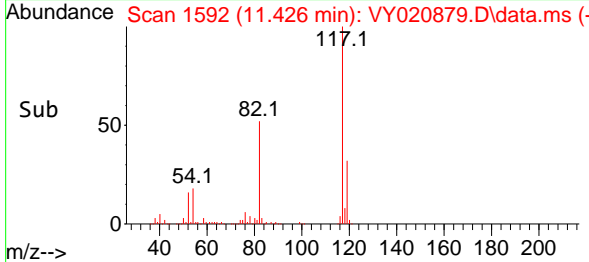


#63  
 Chlorobenzene-d5  
 Concen: 50.000 ug/l  
 RT: 11.426 min Scan# 11  
 Delta R.T. 0.006 min  
 Lab File: VY020879.D  
 Acq: 20 Jan 2025 14:15

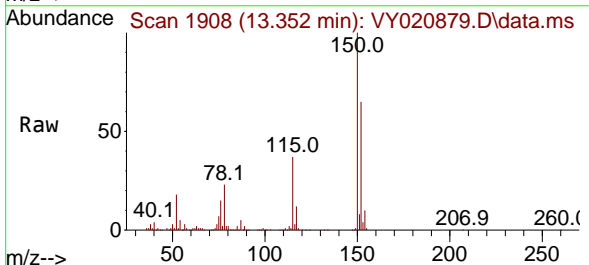
Instrument :  
 MSVOA\_Y  
 ClientSampleId :



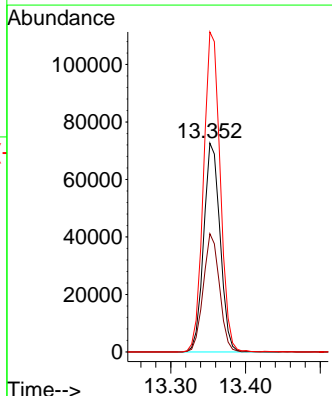
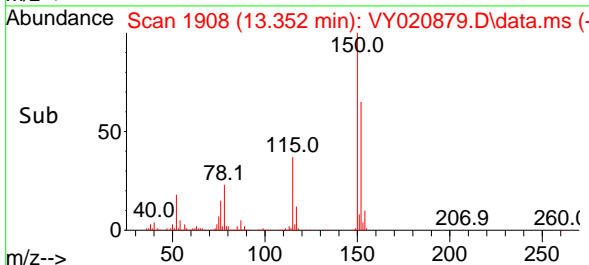
Tgt Ion:117 Resp: 282473  
 Ion Ratio Lower Upper  
 117 100  
 82 52.1 41.8 62.6  
 119 31.6 25.8 38.8

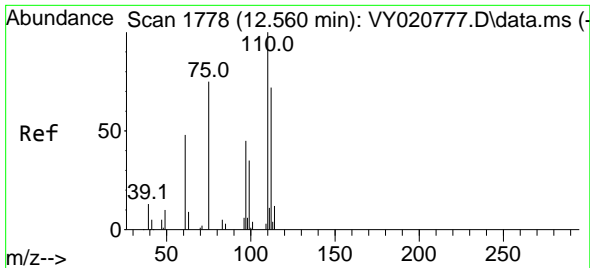


#72  
 1,4-Dichlorobenzene-d4  
 Concen: 50.000 ug/l  
 RT: 13.352 min Scan# 1908  
 Delta R.T. -0.000 min  
 Lab File: VY020879.D  
 Acq: 20 Jan 2025 14:15



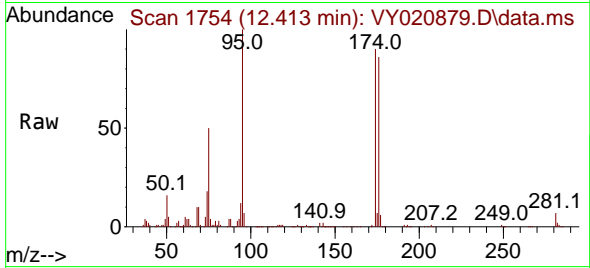
Tgt Ion:152 Resp: 110670  
 Ion Ratio Lower Upper  
 152 100  
 115 56.0 29.0 87.0  
 150 155.7 0.0 347.4



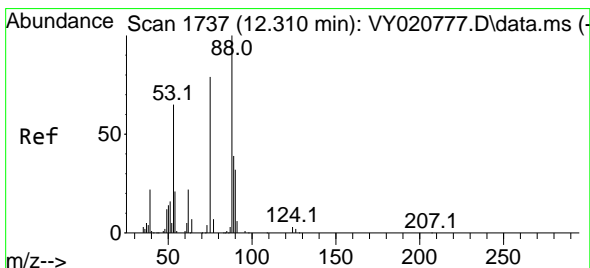
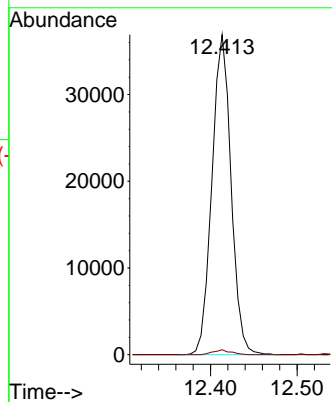
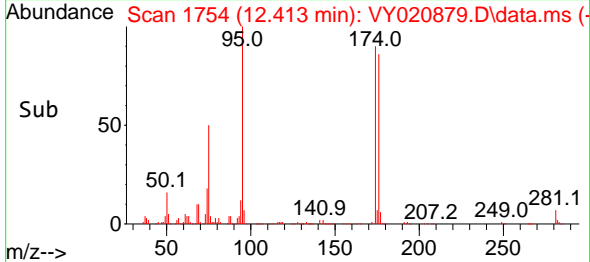


#76  
 1,2,3-Trichloropropane  
 Concen: 58.405 ug/l  
 RT: 12.413 min Scan# 1754  
 Delta R.T. -0.147 min  
 Lab File: VY020879.D  
 Acq: 20 Jan 2025 14:15

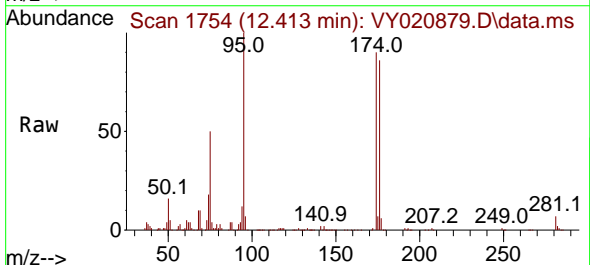
Instrument : MSVOA\_Y  
 ClientSampleId :



Tgt Ion: 75 Resp: 56556  
 Ion Ratio Lower Upper  
 75 100  
 77 1.4 0.0 0.0#



#81  
 trans-1,4-Dichloro-2-butene  
 Concen: 123.149 ug/l  
 RT: 12.413 min Scan# 1754  
 Delta R.T. 0.103 min  
 Lab File: VY020879.D  
 Acq: 20 Jan 2025 14:15



Tgt Ion: 75 Resp: 56556  
 Ion Ratio Lower Upper  
 75 100  
 53 0.0 69.4 104.0#  
 89 0.1 39.6 59.4#

