

Data Path : Z:\voasrv\HPCHEM1\MSVOA_Y\Data\VY012323\
 Data File : VY012312.D
 Acq On : 23 Jan 2023 14:37
 Operator : KP/MD
 Sample : 01232-06
 Misc : 5.07g/5.0mL/MSVOA_Y/SOIL
 ALS Vial : 8 Sample Multiplier: 1

Instrument :
 MSVOA_Y
 ClientSampleId :
 B-P-19A

Integration Parameters: RTEINT.P

Integrator: RTE
 Smoothing : ON Filtering: 5
 Sampling : 1 Min Area: 3 % of largest Peak
 Start Thrs: 0.2 Max Peaks: 100
 Stop Thrs : 0 Peak Location: TOP

If leading or trailing edge < 100 prefer < Baseline drop else tangent >
 Peak separation: 5

Method : Z:\voasrv\HPCHEM1\MSVOA_Y\methods\82Y011623S.M
 Title : SW846 8260

Signal : TIC: VY012312.D\data.ms

peak #	R.T. min	first scan	max scan	last scan	PK TY	peak height	corr. area	corr. % max.	% of total
1	3.948	341	349	362	rBV	3728	10990	1.54%	0.256%
2	4.710	465	474	487	rVB2	8070	25902	3.63%	0.604%
3	4.942	497	512	520	rBV3	3566	12654	1.77%	0.295%
4	6.978	834	846	861	rBV	43655	134663	18.85%	3.139%
5	7.716	956	967	973	rBV	101243	244327	34.21%	5.696%
6	7.789	973	979	994	rVB	181825	409955	57.40%	9.557%
7	8.143	1023	1037	1050	rVB	104899	234722	32.86%	5.472%
8	8.691	1118	1127	1140	rBV	267818	525886	73.63%	12.260%
9	10.179	1364	1371	1379	rBV	420430	714257	100.00%	16.651%
10	10.581	1431	1437	1443	rVB	13049	22122	3.10%	0.516%
11	10.947	1491	1497	1507	rBV	57412	100304	14.04%	2.338%
12	11.490	1579	1586	1599	rBV	416160	663686	92.92%	15.472%
13	12.483	1742	1749	1760	rBV2	336508	531455	74.41%	12.390%
14	12.825	1797	1805	1813	rBV	9899	16562	2.32%	0.386%
15	13.428	1897	1904	1911	rBV	402117	625044	87.51%	14.572%
16	13.965	1986	1992	1999	rVB2	5322	8762	1.23%	0.204%
17	15.318	2210	2214	2219	rVB	5591	8205	1.15%	0.191%

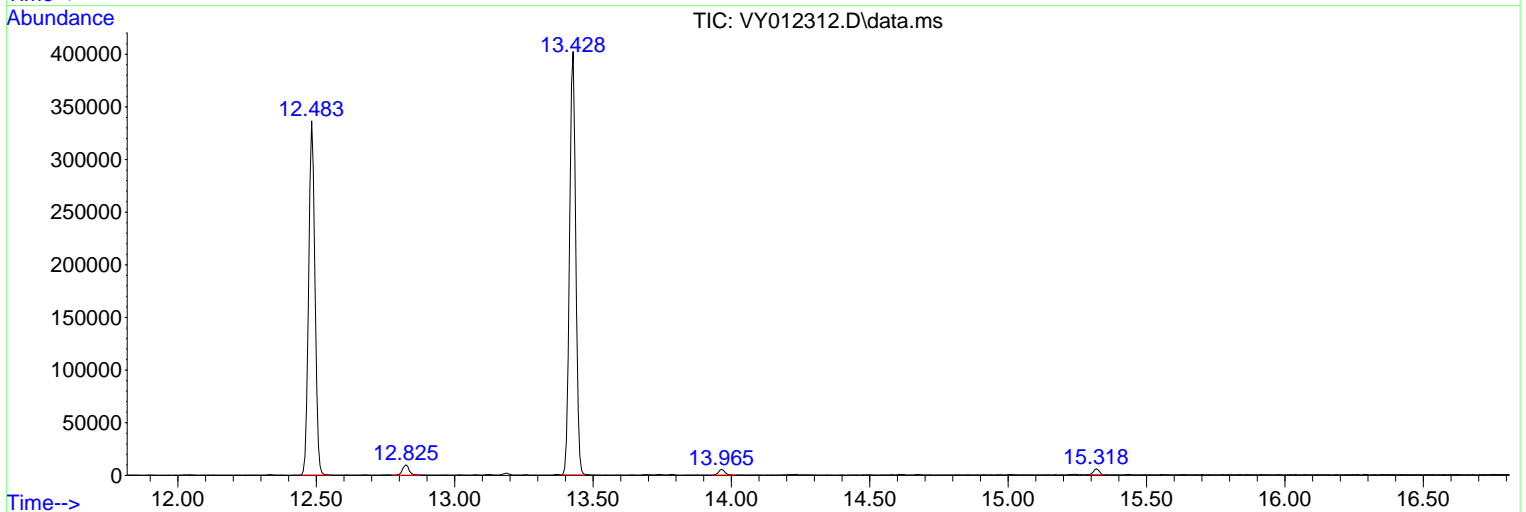
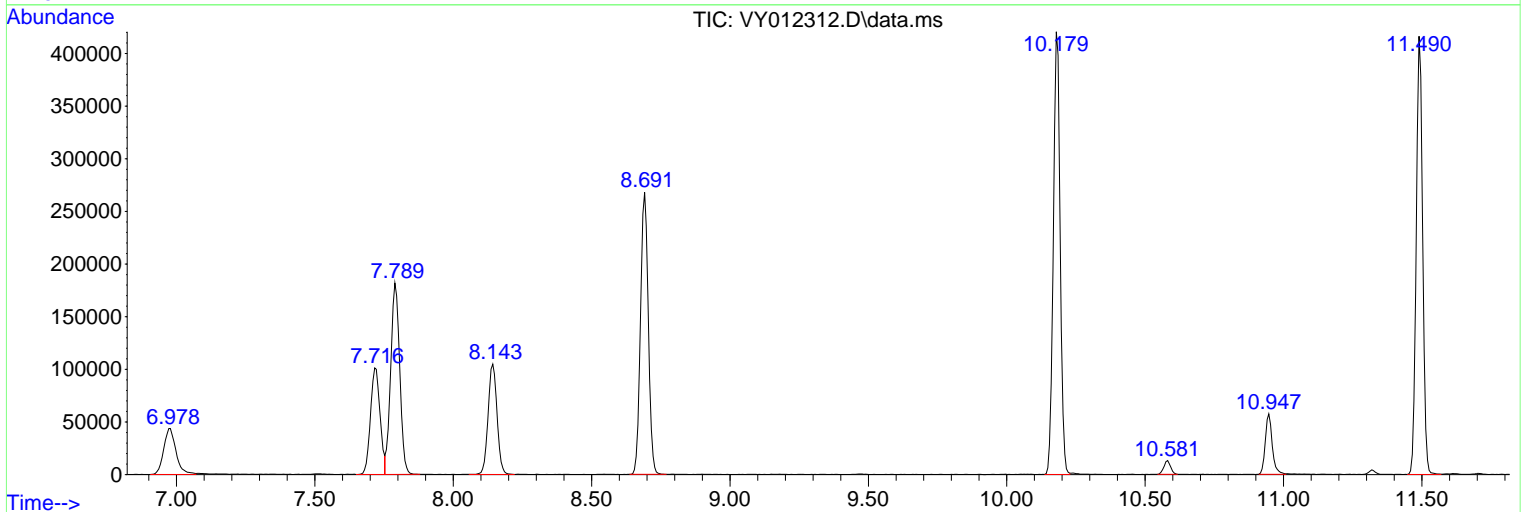
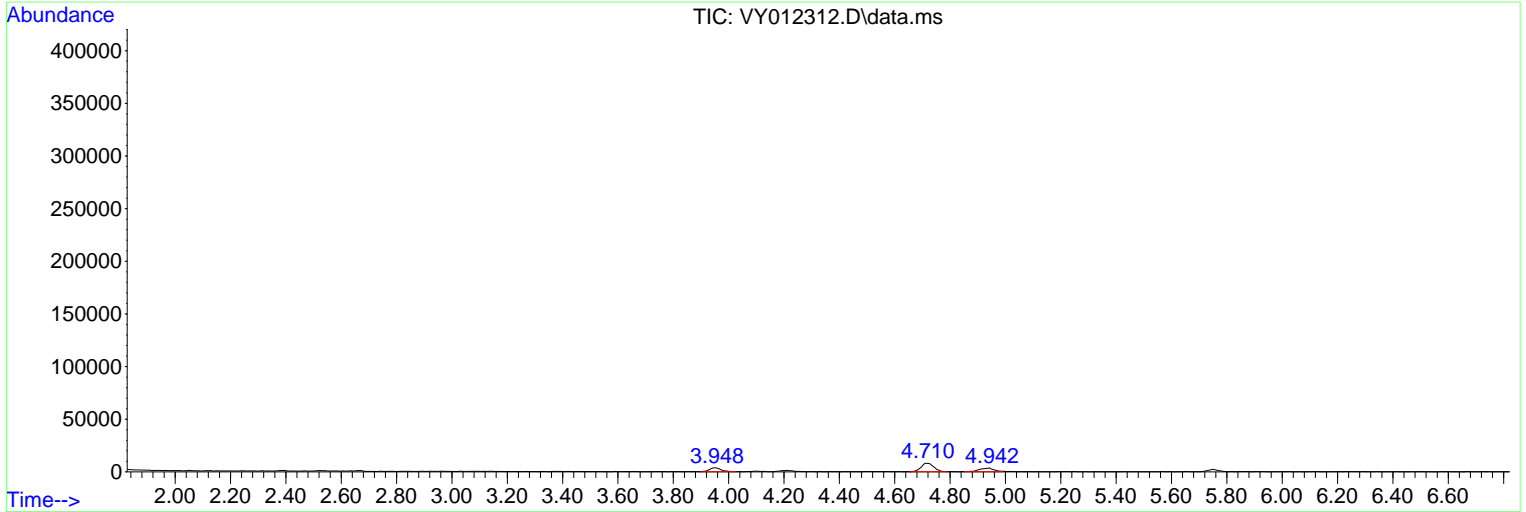
Sum of corrected areas: 4289496

Data Path : Z:\voasrv\HPCHEM1\MSVOA_Y\Data\VY012312\
 Data File : VY012312.D
 Acq On : 23 Jan 2023 14:37
 Operator : KP/MD
 Sample : 01232-06
 Misc : 5.07g/5.0mL/MSVOA_Y/SOIL
 ALS Vial : 8 Sample Multiplier: 1

Instrument :
 MSVOA_Y
 ClientSampleId :
 B-P-19A

Quant Method : Z:\voasrv\HPCHEM1\MSVOA_Y\methods\82Y011623S.M
 Quant Title : SW846 8260

TIC Library : C:\Database\NIST20.L
 TIC Integration Parameters: LSCINT.P



Data Path : Z:\voasrv\HPCHEM1\MSVOA_Y\Data\VY012323\
 Data File : VY012312.D
 Acq On : 23 Jan 2023 14:37
 Operator : KP/MD
 Sample : 01232-06
 Misc : 5.07g/5.0mL/MSVOA_Y/SOIL
 ALS Vial : 8 Sample Multiplier: 1

Instrument :
 MSVOA_Y
 ClientSampleId :
 B-P-19A

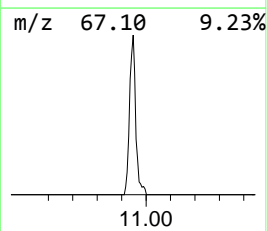
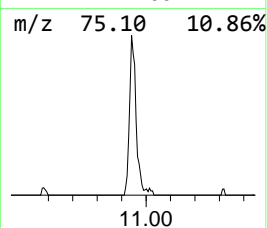
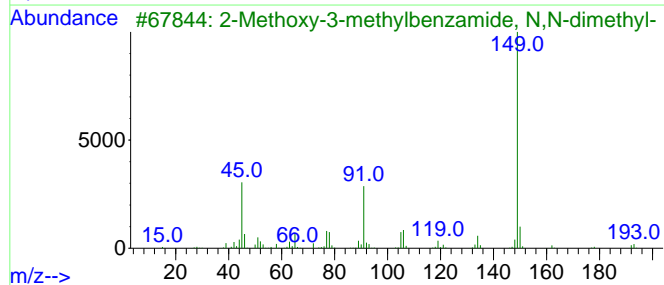
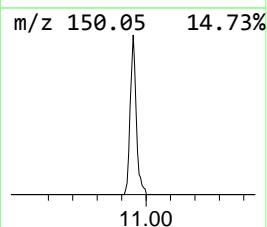
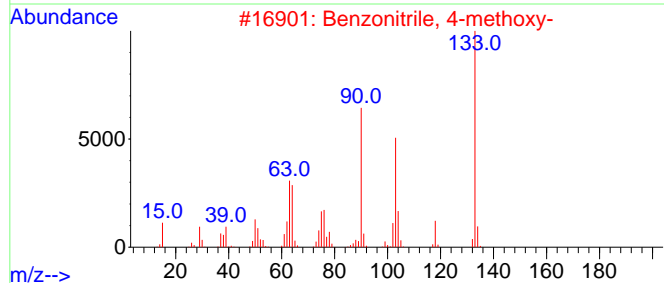
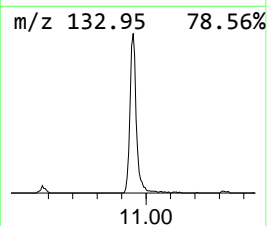
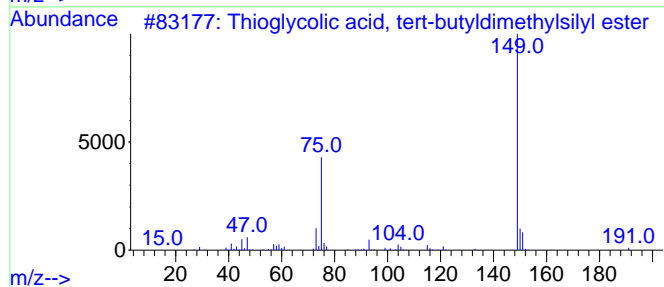
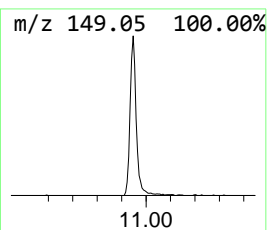
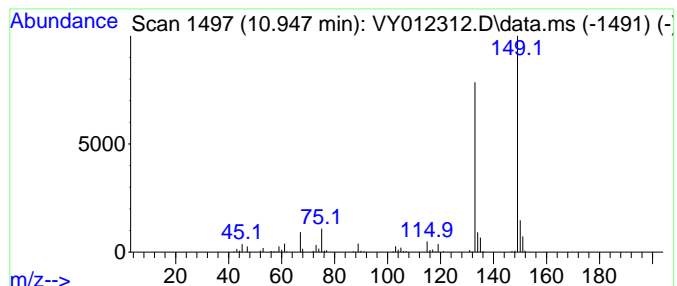
Quant Method : Z:\voasrv\HPCHEM1\MSVOA_Y\methods\82Y011623S.M
 Quant Title : SW846 8260

TIC Library : C:\Database\NIST20.L
 TIC Integration Parameters: LSCINT.P

 Peak Number 1 unknown10.947 Concentration Rank 1

R.T.	EstConc	Area	Relative to ISTD	R.T.
10.947	7.56 ug/l	100304	Chlorobenzene-d5	11.490

Hit#	of	5	Tentative ID	MW	MolForm	CAS#	Qual
1			Thioglycolic acid, tert-butyl dimethylsilyl ester	206	C8H18O2SSi	1000476-01-2	25
2			Benzonitrile, 4-methoxy-	133	C8H7NO	000874-90-8	25
3			2-Methoxy-3-methylbenzamide, N,N-dimethyl-	193	C11H15NO2	1369798-01-5	23
4			1H-Indole-3-thiol	149	C8H7NS	000480-94-4	17
5			1,2-Benzenediol, 0,0'-di(4-ethylphenyl) ether	374	C24H22O4	1000325-97-5	17



Data Path : Z:\voasrv\HPCHEM1\MSVOA_Y\Data\VY012323\
Data File : VY012312.D
Acq On : 23 Jan 2023 14:37
Operator : KP/MD
Sample : 01232-06
Misc : 5.07g/5.0mL/MSVOA_Y/SOIL
ALS Vial : 8 Sample Multiplier: 1

Instrument :
MSVOA_Y
ClientSampleId :
B-P-19A

Quant Method : Z:\voasrv\HPCHEM1\MSVOA_Y\methods\82Y011623S.M
Quant Title : SW846 8260

TIC Library : C:\Database\NIST0.L
TIC Integration Parameters: LSCINT.P

TIC Top Hit name	RT	EstConc	Units	Response	--Internal Standard--			
					#	RT	Resp	Conc
unknown10.947	10.947	7.6	ug/l	100304	3	11.490	663686	50.0