

Data Path : Z:\voasrv\HPCHEM1\MSVOA_Y\Data\VY012725\
 Data File : VY020953.D
 Acq On : 27 Jan 2025 17:11
 Operator : SY/MD
 Sample : Q1187-01RE
 Misc : 5.03g/5.0mL/MSVOA_Y/SOIL/B
 ALS Vial : 9 Sample Multiplier: 1

Instrument :
 MSVOA_Y
 ClientSampleId :

Quant Time: Jan 28 01:15:55 2025
 Quant Method : Z:\voasrv\HPCHEM1\MSVOA_Y\methods\82Y012425S.M
 Quant Title : SW846 8260
 QLast Update : Sat Jan 25 01:12:18 2025
 Response via : Initial Calibration

Compound	R.T.	QIon	Response	Conc	Units	Dev(Min)

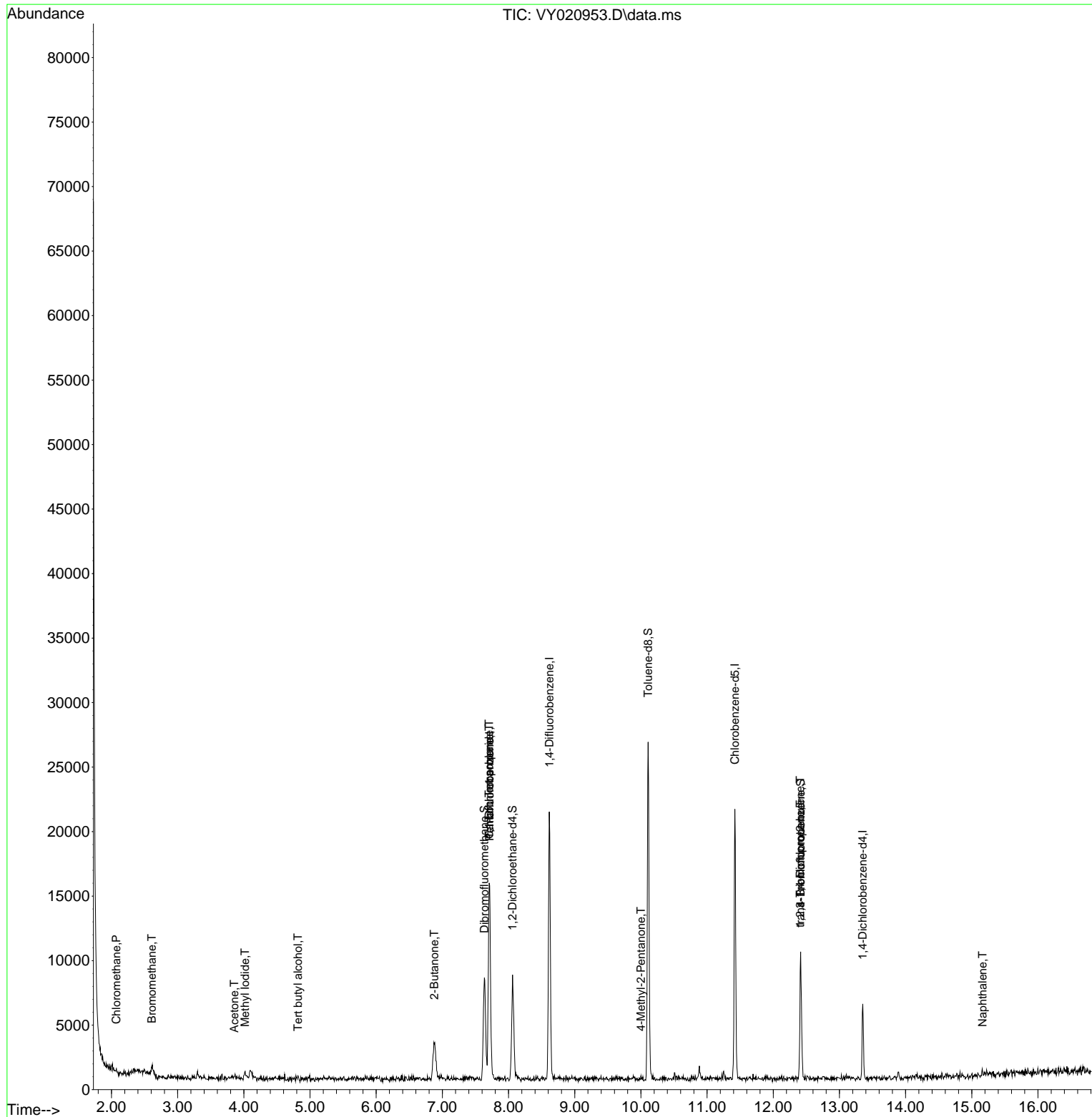
Internal Standards						
1) Pentafluorobenzene	7.713	168	13229	50.000	ug/l	0.00
34) 1,4-Difluorobenzene	8.616	114	18529	50.000	ug/l	-0.01
63) Chlorobenzene-d5	11.420	117	12308	50.000	ug/l	0.00
72) 1,4-Dichlorobenzene-d4	13.353	152	1570	50.000	ug/l	0.00
System Monitoring Compounds						
33) 1,2-Dichloroethane-d4	8.061	65	6012	56.999	ug/l	-0.01
Spiked Amount	50.000	Range	50 - 163	Recovery	=	114.000%
35) Dibromofluoromethane	7.634	113	5990	56.312	ug/l	-0.01
Spiked Amount	50.000	Range	54 - 147	Recovery	=	112.620%
50) Toluene-d8	10.109	98	18533	44.918	ug/l	0.00
Spiked Amount	50.000	Range	58 - 134	Recovery	=	89.840%
62) 4-Bromofluorobenzene	12.414	95	2709	19.728	ug/l	0.00
Spiked Amount	50.000	Range	29 - 146	Recovery	=	39.460%
Target Compounds						
					Qvalue	
3) Chloromethane	2.074	50	142	1.908	ug/l #	40
5) Bromomethane	2.611	94	290	5.279	ug/l #	61
10) Methyl Iodide	4.019	142	721	5.321	ug/l #	82
11) Tert butyl alcohol	4.818	59	40	4.913	ug/l #	74
16) Acetone	3.854	43	247	17.284	ug/l #	43
25) 2-Butanone	6.878	43	26	1.074	ug/l #	42
36) 1,1-Dichloropropene	7.707	75	963	6.484	ug/l #	40
38) Carbon Tetrachloride	7.707	117	1308	7.303	ug/l #	12
51) 4-Methyl-2-Pentanone	10.000	43	106	1.924	ug/l #	34
76) 1,2,3-Trichloropropane	12.408	75	1386	124.859	ug/l #	100
81) trans-1,4-Dichloro-2-b...	12.408	75	1386	241.227	ug/l #	15
95) Naphthalene	15.163	128	59	1.454	ug/l #	69

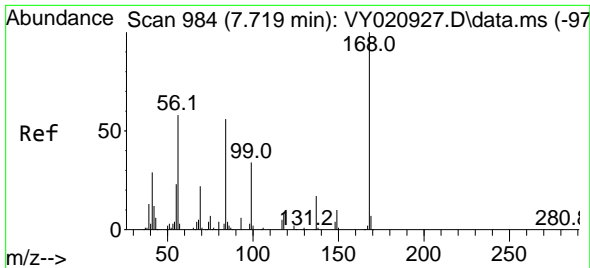
(#) = qualifier out of range (m) = manual integration (+) = signals summed

Data Path : Z:\voasrv\HPCHEM1\MSVOA_Y\Data\VY012725\
 Data File : VY020953.D
 Acq On : 27 Jan 2025 17:11
 Operator : SY/MD
 Sample : Q1187-01RE
 Misc : 5.03g/5.0mL/MSVOA_Y/SOIL/B
 ALS Vial : 9 Sample Multiplier: 1

Instrument :
 MSVOA_Y
 ClientSampleId :

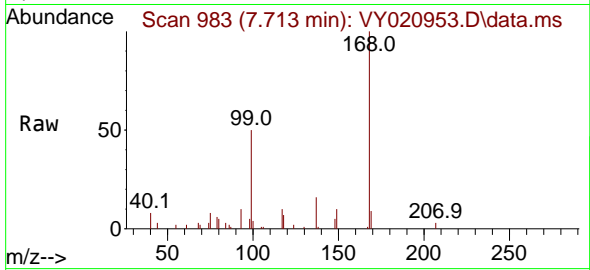
Quant Time: Jan 28 01:15:55 2025
 Quant Method : Z:\voasrv\HPCHEM1\MSVOA_Y\methods\82Y012425S.M
 Quant Title : SW846 8260
 QLast Update : Sat Jan 25 01:12:18 2025
 Response via : Initial Calibration



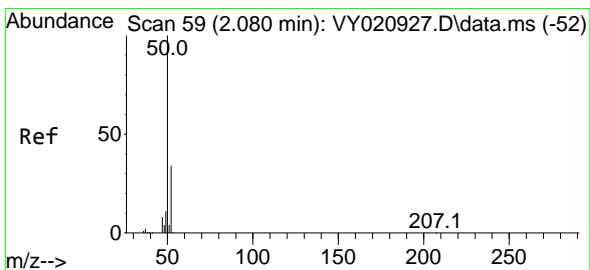
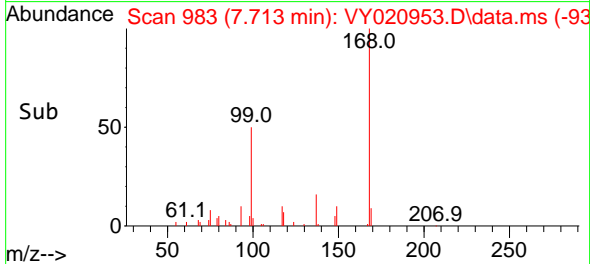
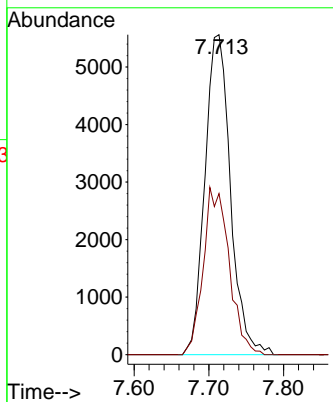


#1
 Pentafluorobenzene
 Concen: 50.000 ug/l
 RT: 7.713 min Scan# 99
 Delta R.T. -0.006 min
 Lab File: VY020953.D
 Acq: 27 Jan 2025 17:11

Instrument :
 MSVOA_Y
 ClientSampleId :

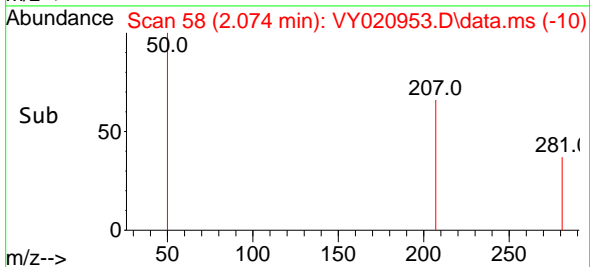
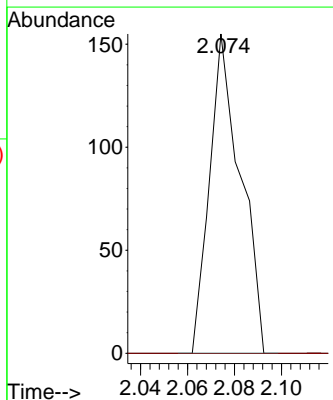
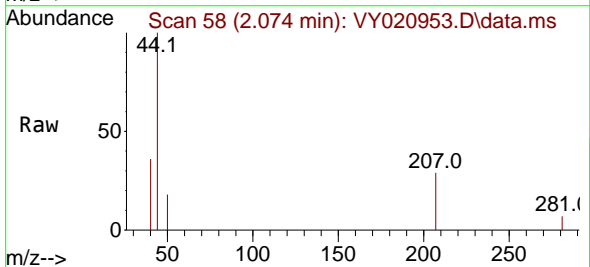


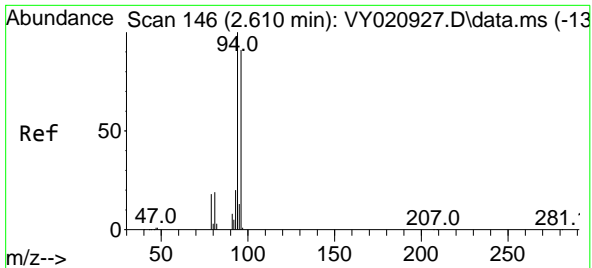
Tgt Ion:168 Resp: 13229
 Ion Ratio Lower Upper
 168 100
 99 50.4 43.0 64.6



#3
 Chloromethane
 Concen: 1.908 ug/l
 RT: 2.074 min Scan# 58
 Delta R.T. -0.006 min
 Lab File: VY020953.D
 Acq: 27 Jan 2025 17:11

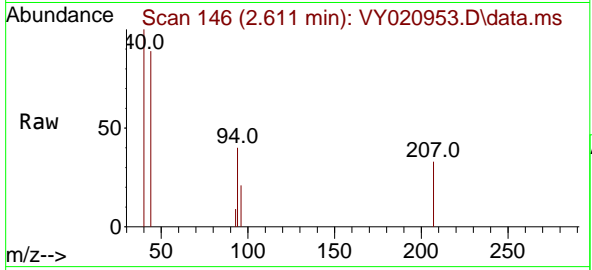
Tgt Ion: 50 Resp: 142
 Ion Ratio Lower Upper
 50 100
 52 0.0 27.4 41.0#



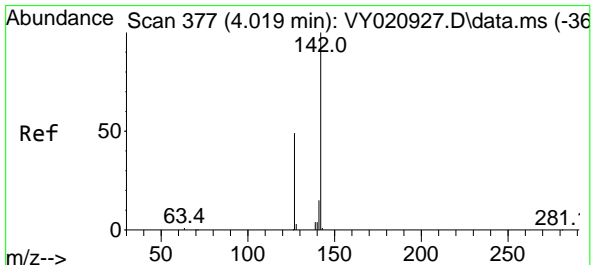
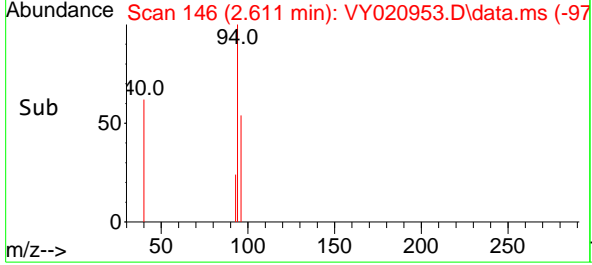
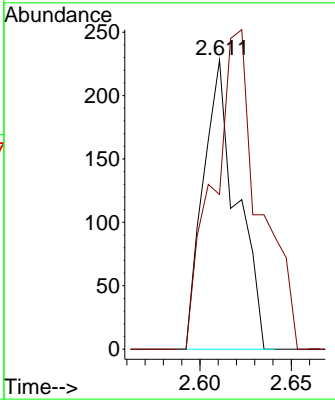


#5
 Bromomethane
 Concen: 5.279 ug/l
 RT: 2.611 min Scan# 14
 Delta R.T. 0.000 min
 Lab File: VY020953.D
 Acq: 27 Jan 2025 17:11

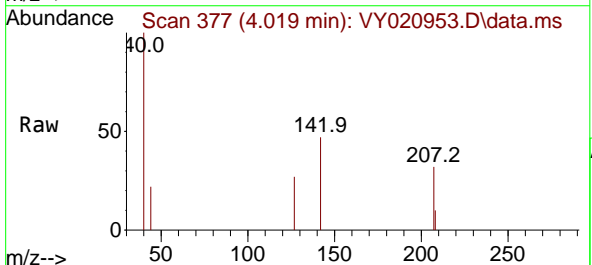
Instrument :
 MSVOA_Y
 ClientSampleId :



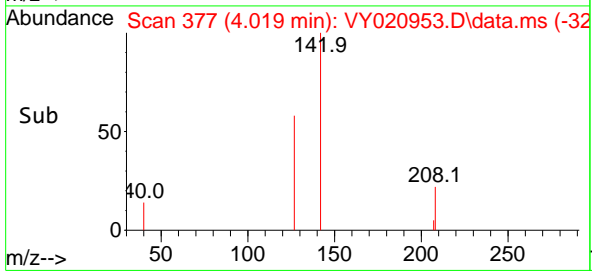
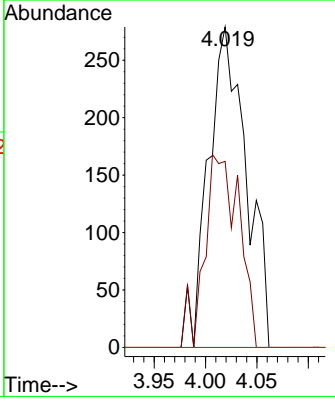
Tgt Ion: 94 Resp: 290
 Ion Ratio Lower Upper
 94 100
 96 53.5 72.6 109.0#

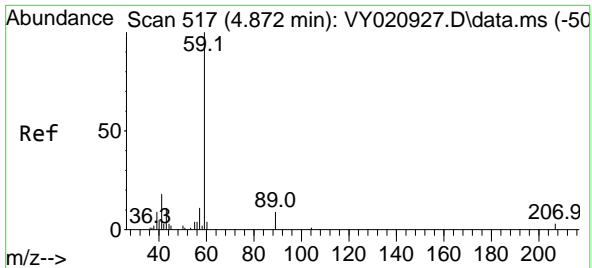


#10
 Methyl Iodide
 Concen: 5.321 ug/l
 RT: 4.019 min Scan# 377
 Delta R.T. 0.000 min
 Lab File: VY020953.D
 Acq: 27 Jan 2025 17:11



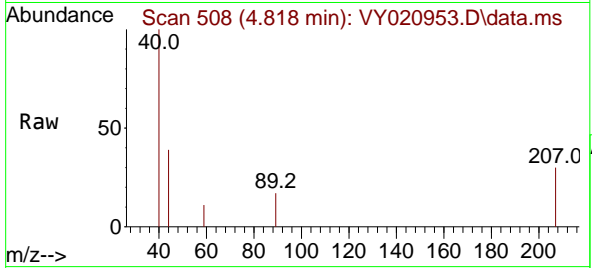
Tgt Ion:142 Resp: 721
 Ion Ratio Lower Upper
 142 100
 127 54.8 37.3 55.9
 141 0.0 11.4 17.2#



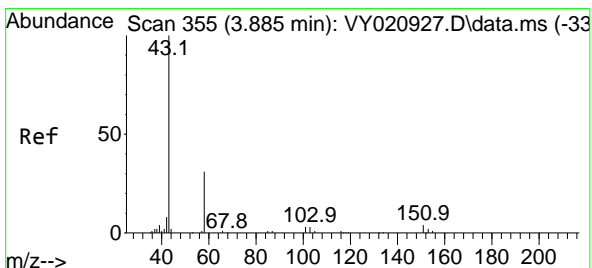
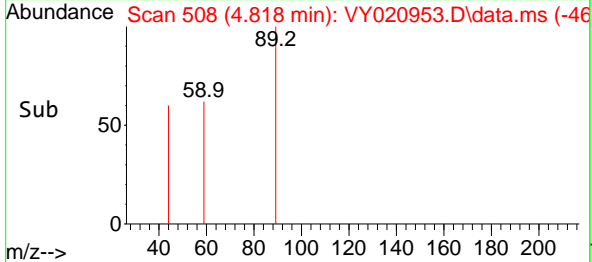
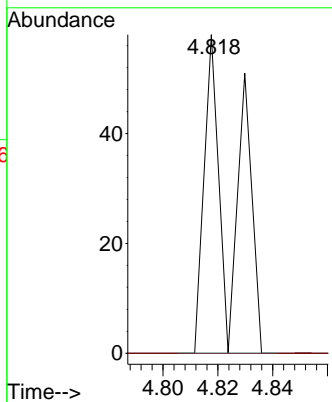


#11
 Tert butyl alcohol
 Concen: 4.913 ug/l
 RT: 4.818 min Scan# 50
 Delta R.T. -0.055 min
 Lab File: VY020953.D
 Acq: 27 Jan 2025 17:11

Instrument :
 MSVOA_Y
 ClientSampleId :

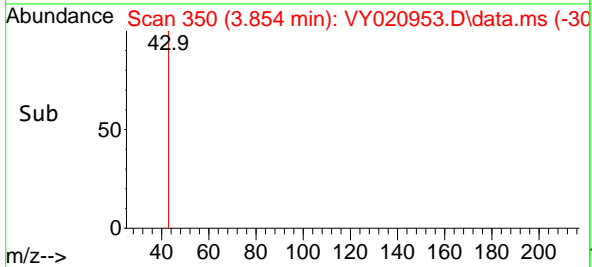
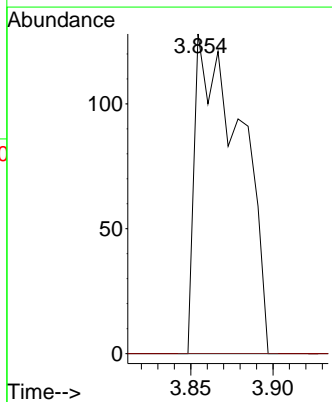
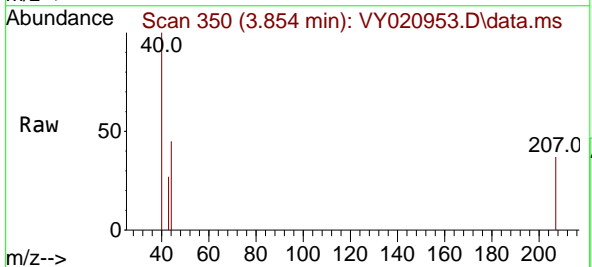


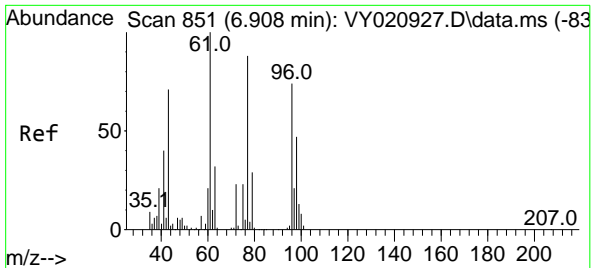
Tgt Ion: 59 Resp: 40
 Ion Ratio Lower Upper
 59 100
 57 0.0 7.7 11.5#



#16
 Acetone
 Concen: 17.284 ug/l
 RT: 3.854 min Scan# 350
 Delta R.T. -0.030 min
 Lab File: VY020953.D
 Acq: 27 Jan 2025 17:11

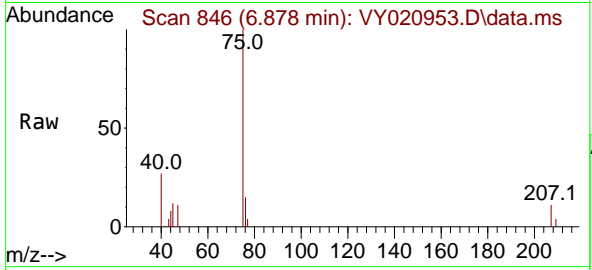
Tgt Ion: 43 Resp: 247
 Ion Ratio Lower Upper
 43 100
 58 0.0 25.6 38.4#



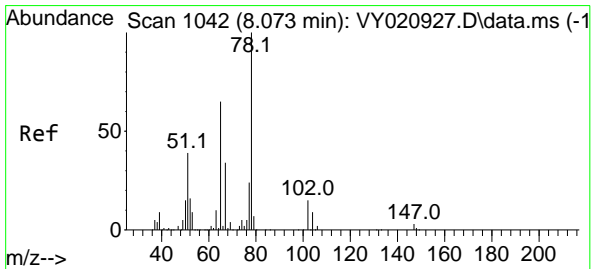
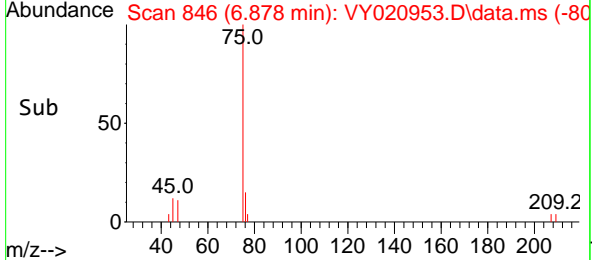
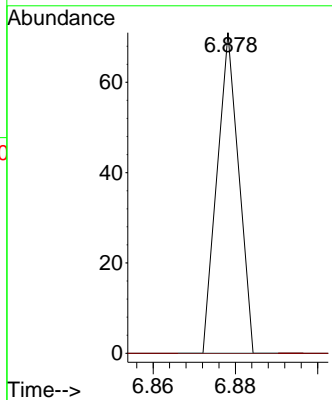


#25
 2-Butanone
 Concen: 1.074 ug/l
 RT: 6.878 min Scan# 84
 Delta R.T. -0.030 min
 Lab File: VY020953.D
 Acq: 27 Jan 2025 17:11

Instrument :
 MSVOA_Y
 ClientSampleId :

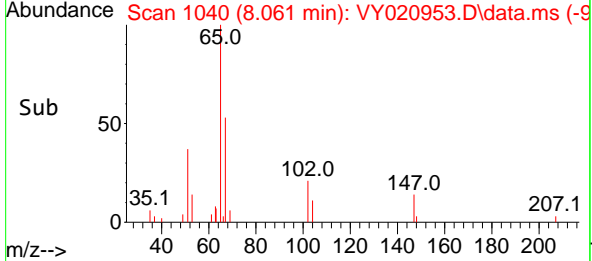
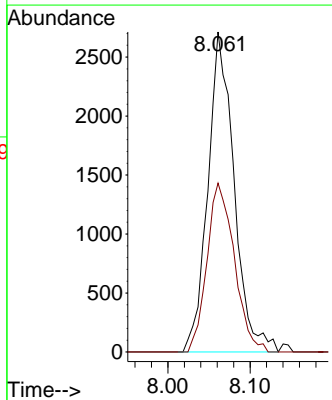
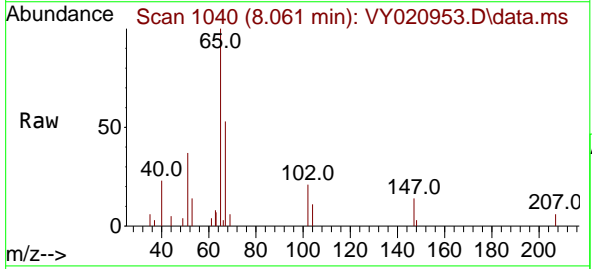


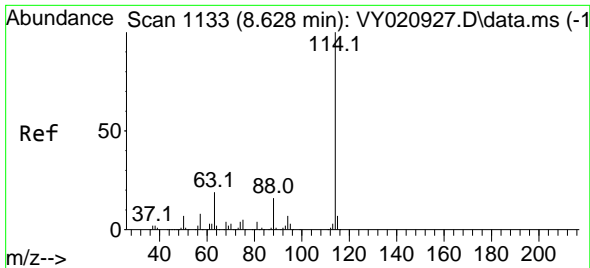
Tgt Ion: 43 Resp: 26
 Ion Ratio Lower Upper
 43 100
 72 0.0 25.8 38.8#



#33
 1,2-Dichloroethane-d4
 Concen: 56.999 ug/l
 RT: 8.061 min Scan# 1040
 Delta R.T. -0.012 min
 Lab File: VY020953.D
 Acq: 27 Jan 2025 17:11

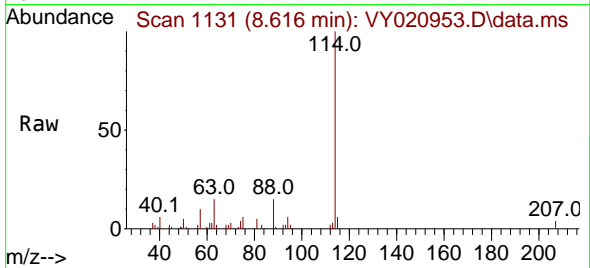
Tgt Ion: 65 Resp: 6012
 Ion Ratio Lower Upper
 65 100
 67 55.0 0.0 105.8





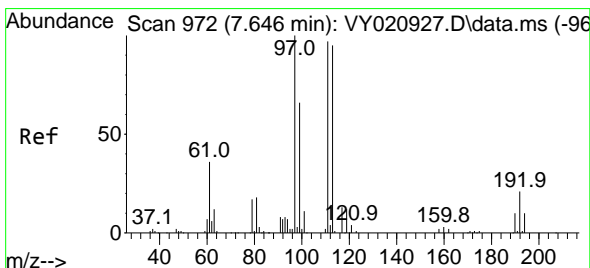
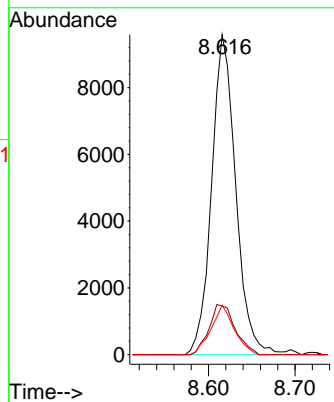
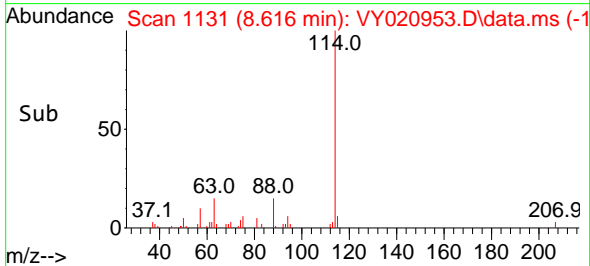
#34
 1,4-Difluorobenzene
 Concen: 50.000 ug/l
 RT: 8.616 min Scan# 1131
 Delta R.T. -0.012 min
 Lab File: VY020953.D
 Acq: 27 Jan 2025 17:11

Instrument : MSVOA_Y
 ClientSampleId :

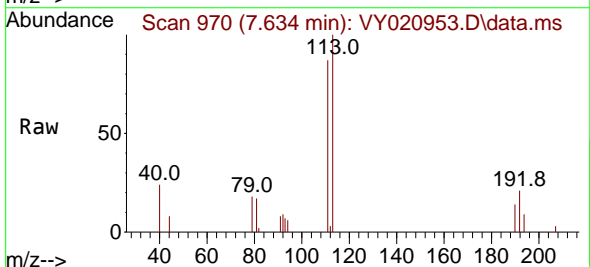


Tgt Ion:114 Resp: 18529

Ion	Ratio	Lower	Upper
114	100		
63	15.2	0.0	38.4
88	15.5	0.0	31.6

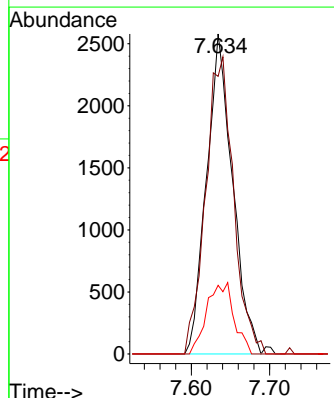
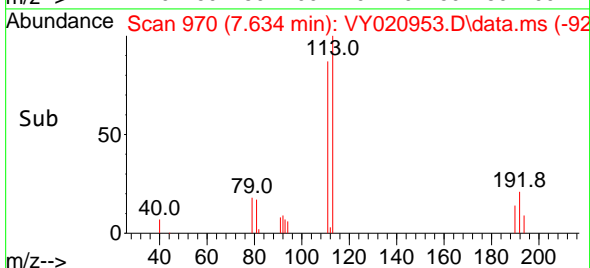


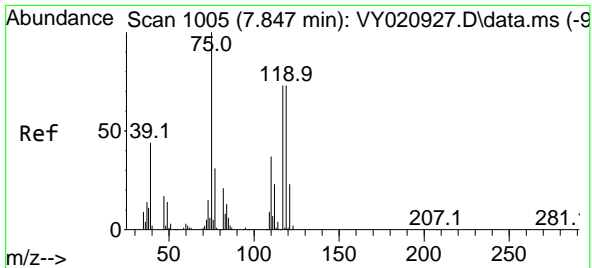
#35
 Dibromofluoromethane
 Concen: 56.312 ug/l
 RT: 7.634 min Scan# 970
 Delta R.T. -0.012 min
 Lab File: VY020953.D
 Acq: 27 Jan 2025 17:11



Tgt Ion:113 Resp: 5990

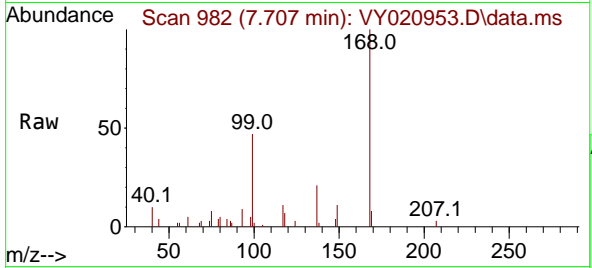
Ion	Ratio	Lower	Upper
113	100		
111	99.1	82.3	123.5
192	23.1	17.4	26.2



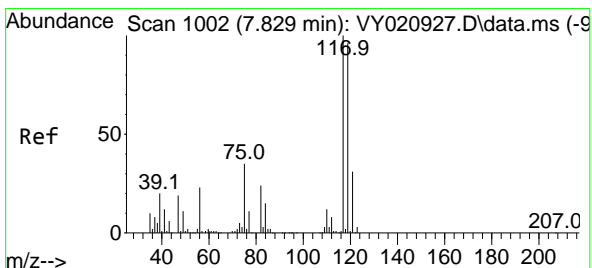
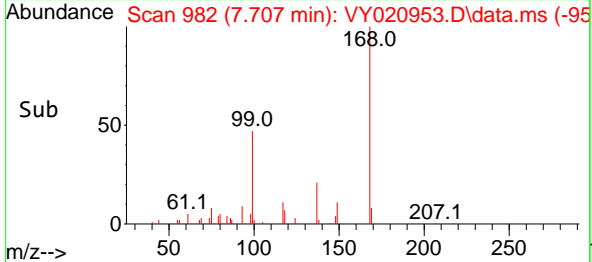
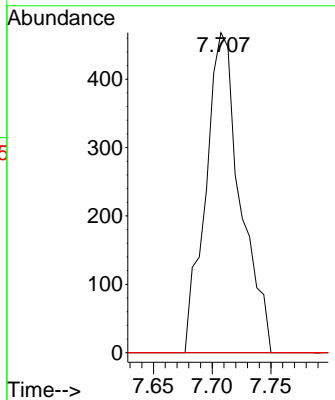


#36
 1,1-Dichloropropene
 Concen: 6.484 ug/l
 RT: 7.707 min Scan# 982
 Delta R.T. -0.140 min
 Lab File: VY020953.D
 Acq: 27 Jan 2025 17:11

Instrument : MSVOA_Y
 ClientSampleId :

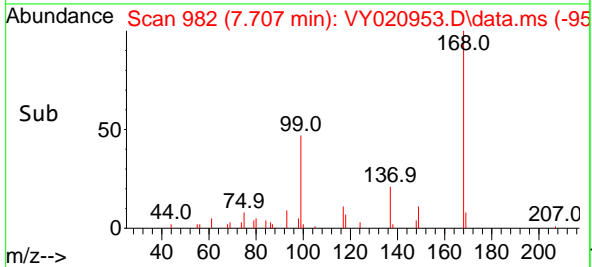
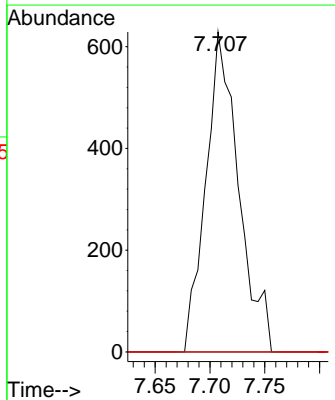
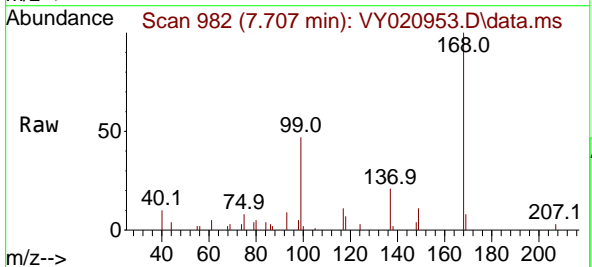


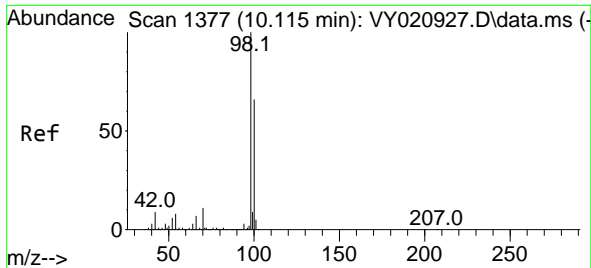
Tgt Ion: 75 Resp: 963
 Ion Ratio Lower Upper
 75 100
 110 0.0 18.5 55.5#
 77 0.0 25.0 37.4#



#38
 Carbon Tetrachloride
 Concen: 7.303 ug/l
 RT: 7.707 min Scan# 982
 Delta R.T. -0.122 min
 Lab File: VY020953.D
 Acq: 27 Jan 2025 17:11

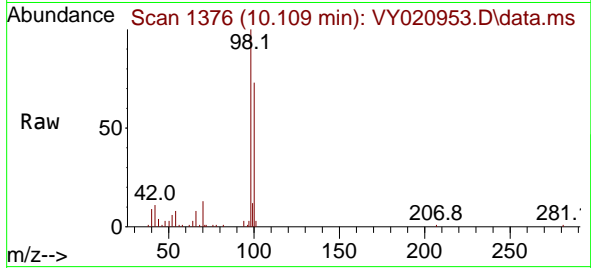
Tgt Ion: 117 Resp: 1308
 Ion Ratio Lower Upper
 117 100
 119 0.0 76.5 114.7#
 121 0.0 25.0 37.4#



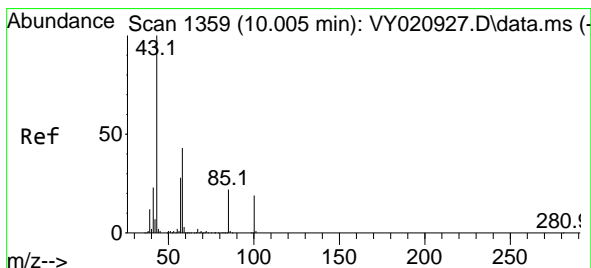
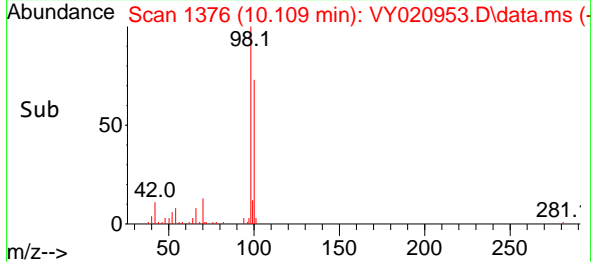
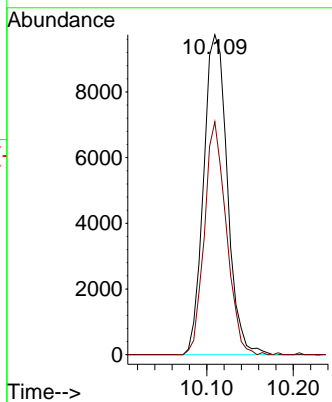


#50
 Toluene-d8
 Concen: 44.918 ug/l
 RT: 10.109 min Scan# 11
 Delta R.T. -0.006 min
 Lab File: VY020953.D
 Acq: 27 Jan 2025 17:11

Instrument :
 MSVOA_Y
 ClientSampleId :

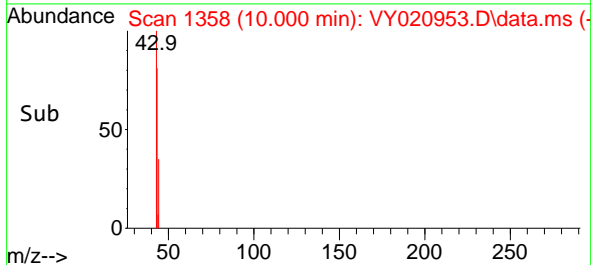
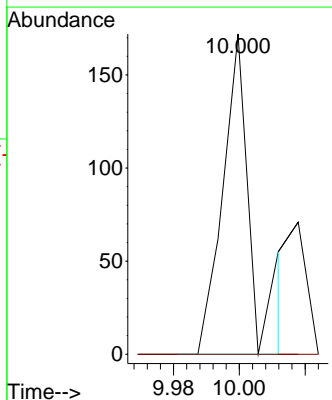
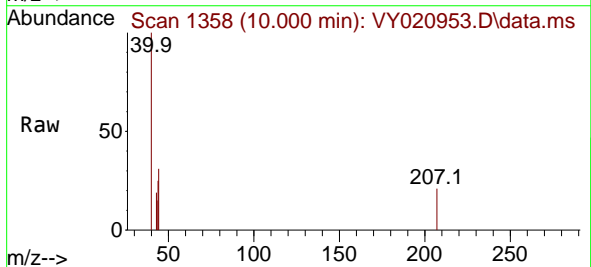


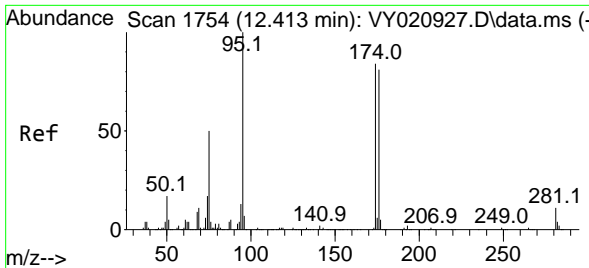
Tgt Ion: 98 Resp: 18533
 Ion Ratio Lower Upper
 98 100
 100 67.1 52.3 78.5



#51
 4-Methyl-2-Pentanone
 Concen: 1.924 ug/l
 RT: 10.000 min Scan# 1358
 Delta R.T. -0.006 min
 Lab File: VY020953.D
 Acq: 27 Jan 2025 17:11

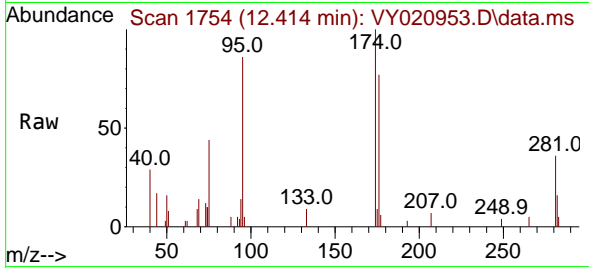
Tgt Ion: 43 Resp: 106
 Ion Ratio Lower Upper
 43 100
 58 0.0 33.7 50.5#





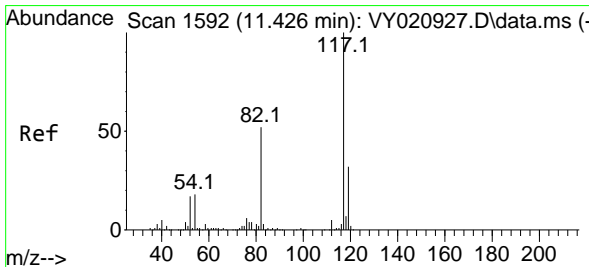
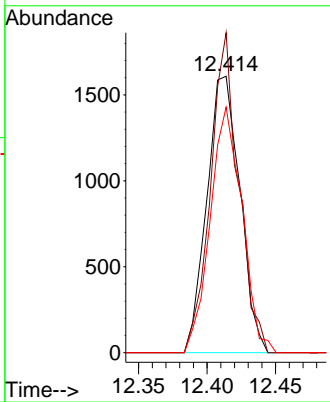
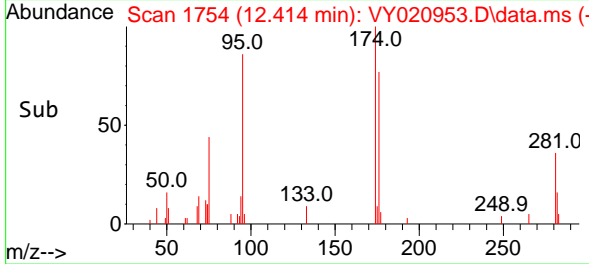
#62
 4-Bromofluorobenzene
 Concen: 19.728 ug/l
 RT: 12.414 min Scan# 11
 Delta R.T. 0.000 min
 Lab File: VY020953.D
 Acq: 27 Jan 2025 17:11

Instrument :
 MSVOA_Y
 ClientSampleId :

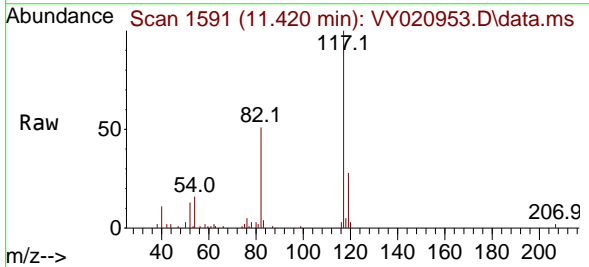


Tgt Ion: 95 Resp: 2709

Ion	Ratio	Lower	Upper
95	100		
174	97.6	0.0	177.4
176	85.2	0.0	172.2

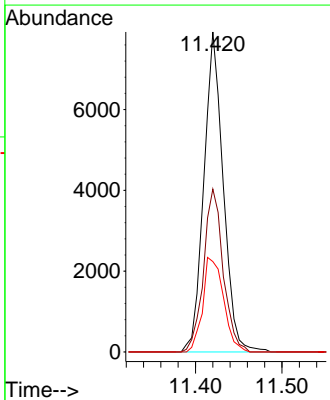
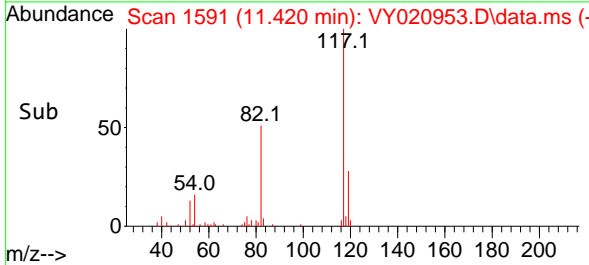


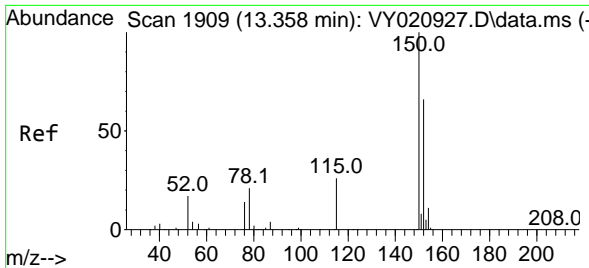
#63
 Chlorobenzene-d5
 Concen: 50.000 ug/l
 RT: 11.420 min Scan# 1591
 Delta R.T. -0.006 min
 Lab File: VY020953.D
 Acq: 27 Jan 2025 17:11



Tgt Ion: 117 Resp: 12308

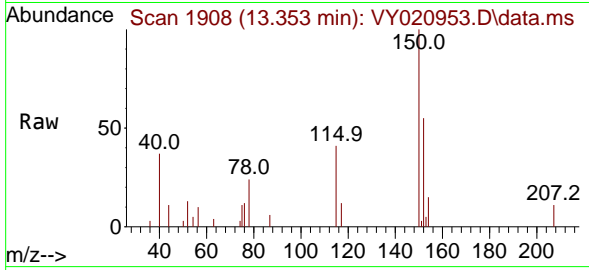
Ion	Ratio	Lower	Upper
117	100		
82	50.9	41.8	62.8
119	28.2	26.0	39.0



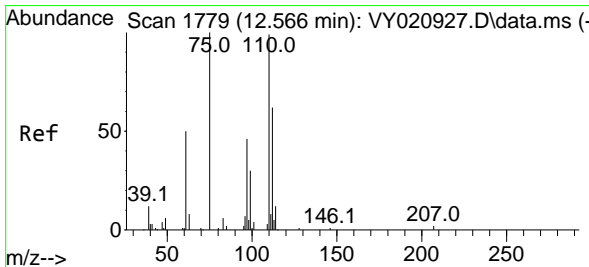
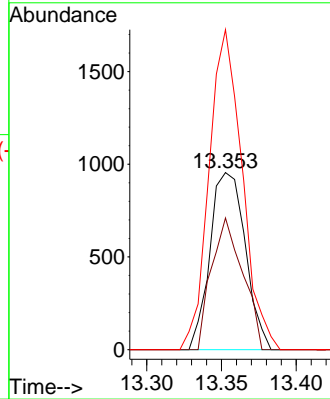
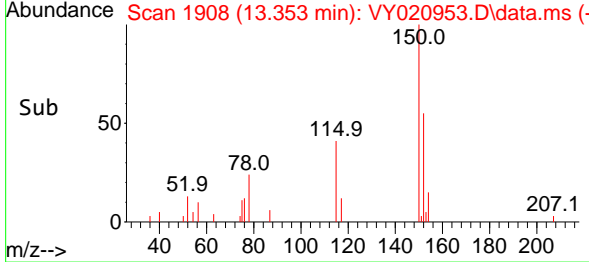


#72
 1,4-Dichlorobenzene-d4
 Concen: 50.000 ug/l
 RT: 13.353 min Scan# 1909
 Delta R.T. -0.006 min
 Lab File: VY020953.D
 Acq: 27 Jan 2025 17:11

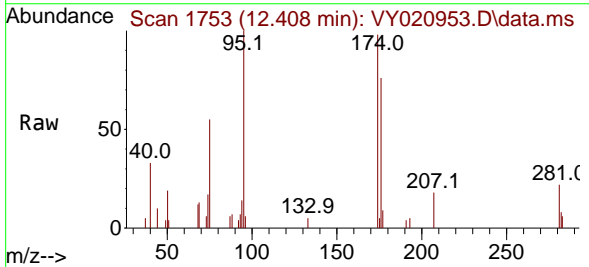
Instrument :
 MSVOA_Y
 ClientSampleId :



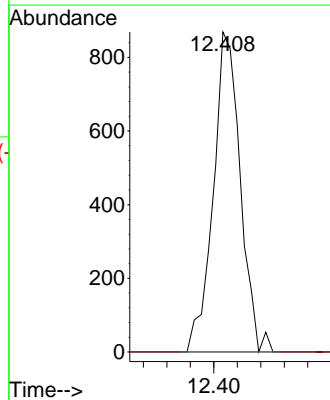
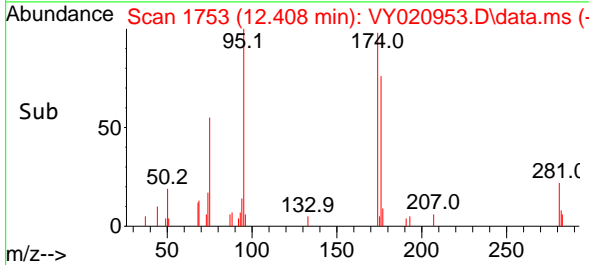
Tgt Ion:152 Resp: 1570
 Ion Ratio Lower Upper
 152 100
 115 65.7 29.0 87.0
 150 169.2 0.0 347.6

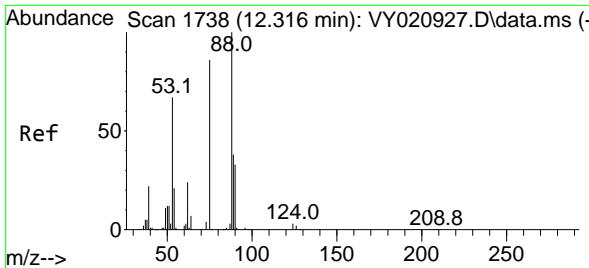


#76
 1,2,3-Trichloropropane
 Concen: 124.859 ug/l
 RT: 12.408 min Scan# 1753
 Delta R.T. -0.158 min
 Lab File: VY020953.D
 Acq: 27 Jan 2025 17:11



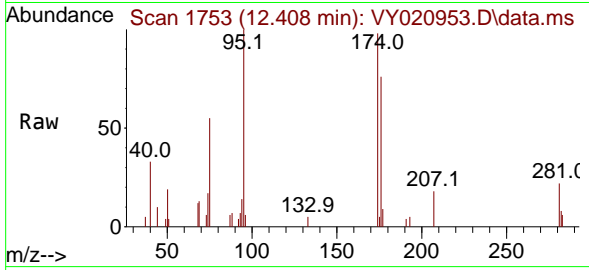
Tgt Ion: 75 Resp: 1386
 Ion Ratio Lower Upper
 75 100
 77 0.0 0.0 0.0



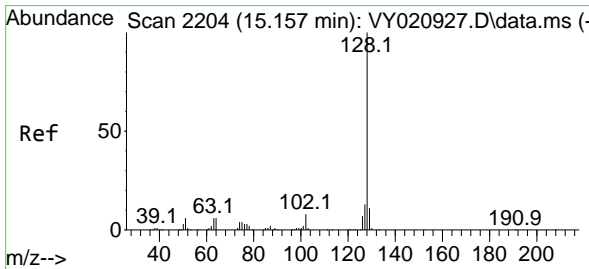
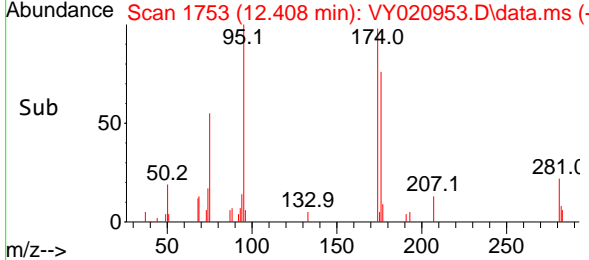
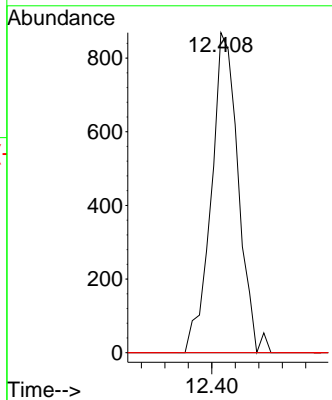


#81
 trans-1,4-Dichloro-2-butene
 Concen: 241.227 ug/l
 RT: 12.408 min Scan# 1
 Delta R.T. 0.092 min
 Lab File: VY020953.D
 Acq: 27 Jan 2025 17:11

Instrument :
 MSVOA_Y
 ClientSampleId :



Tgt Ion	Resp	Lower	Upper
75	1386		
75	100		
53	0.0	67.7	101.5#
89	0.0	38.4	57.6#



#95
 Naphthalene
 Concen: 1.454 ug/l
 RT: 15.163 min Scan# 2205
 Delta R.T. 0.006 min
 Lab File: VY020953.D
 Acq: 27 Jan 2025 17:11

Tgt Ion	Resp	Lower	Upper
128	59		
128	100		
127	0.0	10.3	15.5#
129	0.0	8.8	13.2#

