

Data Path : Z:\voasrv\HPCHEM1\MSVOA_Y\Data\VY012822\
 Data File : VY007331.D
 Acq On : 28 Jan 2022 19:16
 Operator : SY/MD
 Sample : N1333-03
 Misc : 4.63g/5.0mL/MSVOA_Y/SOIL
 ALS Vial : 18 Sample Multiplier: 1

Instrument :
 MSVOA_Y
 ClientSampleId :
 SB-3

Integration Parameters: RTEINT.P

Integrator: RTE
 Smoothing : ON Filtering: 5
 Sampling : 1 Min Area: 3 % of largest Peak
 Start Thrs: 0.2 Max Peaks: 100
 Stop Thrs : 0 Peak Location: TOP

If leading or trailing edge < 100 prefer < Baseline drop else tangent >
 Peak separation: 5

Method : Z:\voasrv\HPCHEM1\MSVOA_Y\methods\82Y011322S.M
 Title : SW846 8260

Signal : TIC: VY007331.D\data.ms

peak #	R.T. min	first scan	max scan	last scan	PK TY	peak height	corr. area	corr. % max.	% of total
1	4.716	466	475	483	rBV2	2843	8104	1.31%	0.243%
2	7.716	958	967	973	rBV	89868	213023	34.41%	6.382%
3	7.789	973	979	993	rVB	141455	314768	50.84%	9.430%
4	8.143	1027	1037	1048	rVB2	89686	190579	30.78%	5.709%
5	8.691	1118	1127	1138	rBV	225628	446570	72.13%	13.379%
6	10.179	1363	1371	1380	rBV	366066	619151	100.00%	18.549%
7	11.490	1577	1586	1599	rBV	353338	565338	91.31%	16.937%
8	12.483	1741	1749	1758	rVB	271988	435139	70.28%	13.036%
9	13.282	1872	1880	1885	rBV3	4214	7219	1.17%	0.216%
10	13.422	1894	1903	1910	rBV	336431	531635	85.87%	15.927%
11	13.965	1985	1992	1997	rBV	4345	6437	1.04%	0.193%

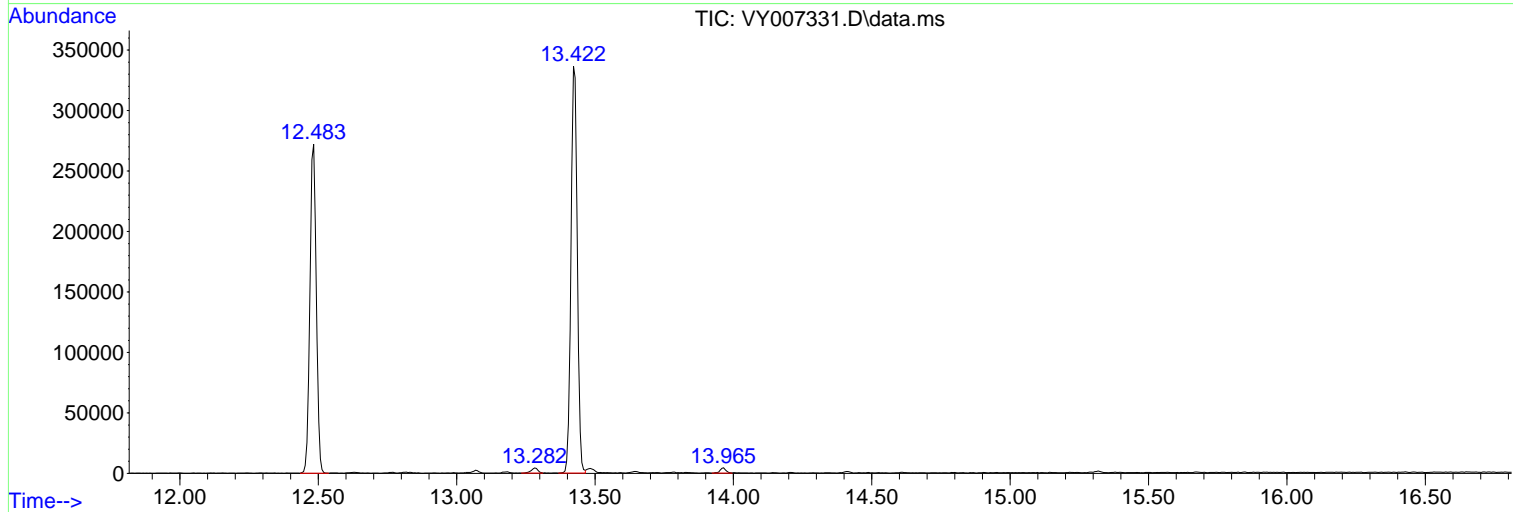
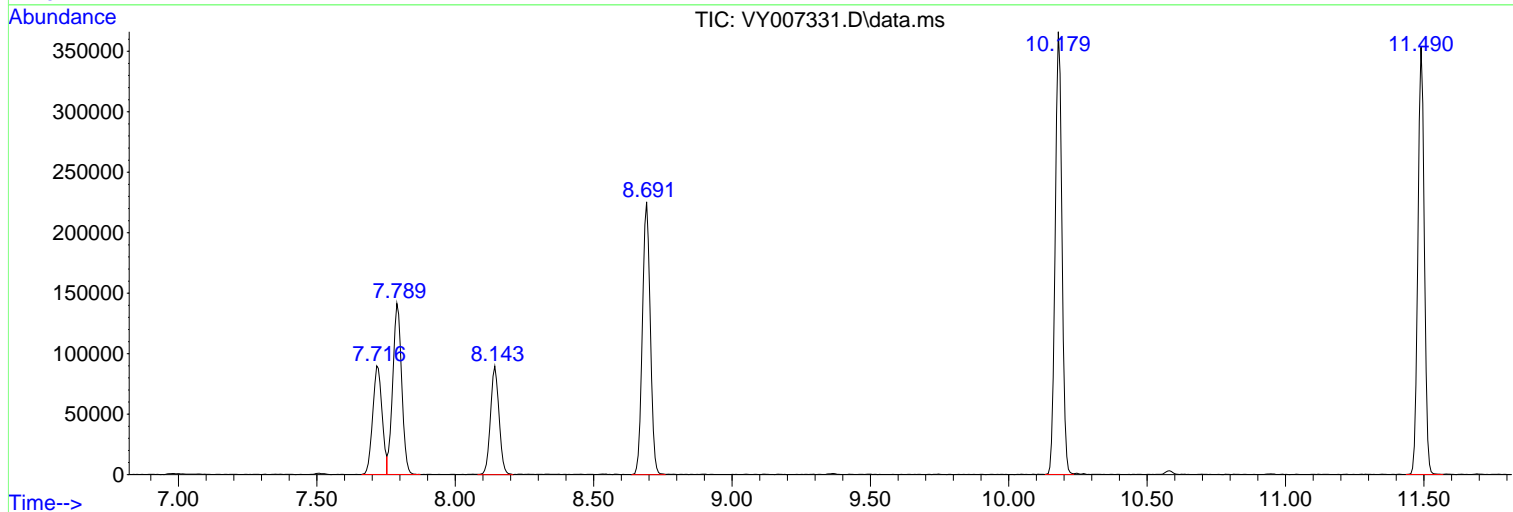
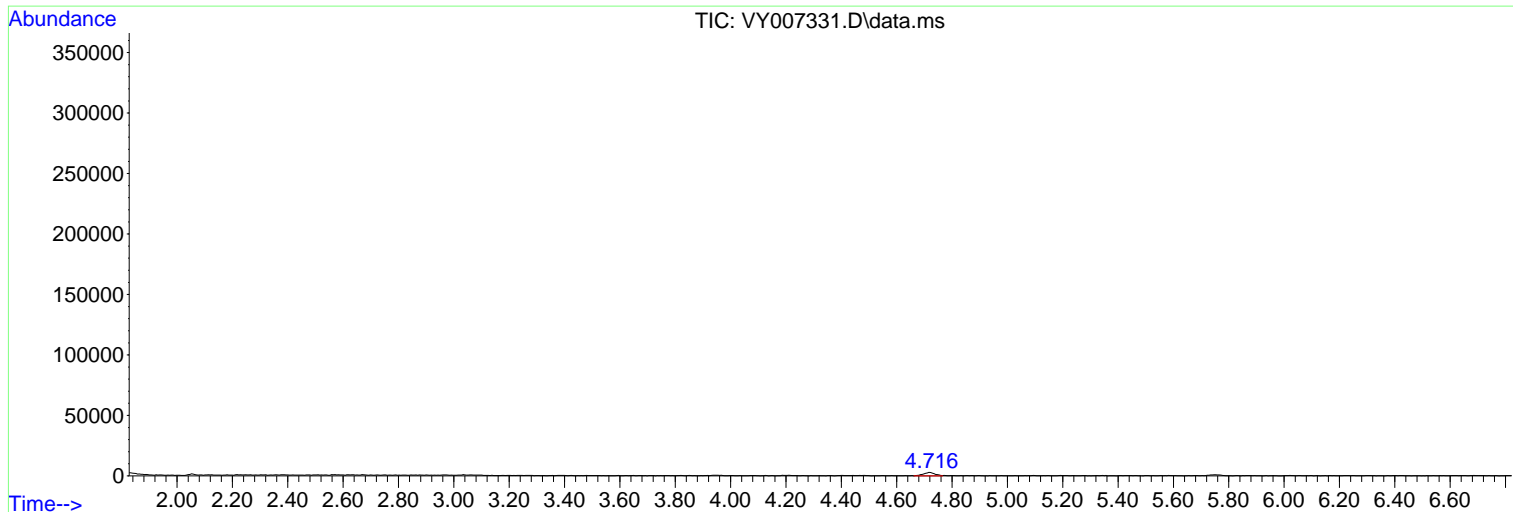
Sum of corrected areas: 3337963

Data Path : Z:\voasrv\HPCHEM1\MSVOA_Y\Data\VY012822\
 Data File : VY007331.D
 Acq On : 28 Jan 2022 19:16
 Operator : SY/MD
 Sample : N1333-03
 Misc : 4.63g/5.0mL/MSVOA_Y/SOIL
 ALS Vial : 18 Sample Multiplier: 1

Instrument :
 MSVOA_Y
 ClientSampleId :
 SB-3

Quant Method : Z:\voasrv\HPCHEM1\MSVOA_Y\methods\82Y011322S.M
 Quant Title : SW846 8260

TIC Library : C:\Database\NIST20.L
 TIC Integration Parameters: LSCINT.P



Library Search Compound Report

Data Path : Z:\voasrv\HPCHEM1\MSVOA_Y\Data\VY012822\
Data File : VY007331.D
Acq On : 28 Jan 2022 19:16
Operator : SY/MD
Sample : N1333-03
Misc : 4.63g/5.0mL/MSVOA_Y/SOIL
ALS Vial : 18 Sample Multiplier: 1

Instrument :
MSVOA_Y
ClientSampleId :
SB-3

Quant Method : Z:\voasrv\HPCHEM1\MSVOA_Y\methods\82Y011322S.M
Quant Title : SW846 8260

TIC Library : C:\Database\NIST20.L
TIC Integration Parameters: LSCINT.P

No Library Search Compounds Detected

Data Path : Z:\voasrv\HPCHEM1\MSVOA_Y\Data\VY012822\
Data File : VY007331.D
Acq On : 28 Jan 2022 19:16
Operator : SY/MD
Sample : N1333-03
Misc : 4.63g/5.0mL/MSVOA_Y/SOIL
ALS Vial : 18 Sample Multiplier: 1

Instrument :
MSVOA_Y
ClientSampleId :
SB-3

Quant Method : Z:\voasrv\HPCHEM1\MSVOA_Y\methods\82Y011322S.M
Quant Title : SW846 8260

TIC Library : C:\Database\NIST0.L
TIC Integration Parameters: LSCINT.P

TIC Top Hit name	RT	EstConc	Units	Response	--Internal Standard--			
					#	RT	Resp	Conc
