

Data Path : Z:\voasrv\HPCHEM1\MSVOA_Y\Data\VY012925\
 Data File : VY020970.D
 Acq On : 29 Jan 2025 17:28
 Operator : SY/MD
 Sample : VIBLK
 Misc : 5.00g/5.0mL/MSVOA_Y/SOIL
 ALS Vial : 4 Sample Multiplier: 1

Instrument :
 MSVOA_Y
 ClientSampleId :
 VIBLK

Quant Time: Jan 30 00:37:21 2025
 Quant Method : Z:\voasrv\HPCHEM1\MSVOA_Y\methods\82Y012425S.M
 Quant Title : SW846 8260
 QLast Update : Sat Jan 25 01:12:18 2025
 Response via : Initial Calibration

Compound	R.T.	QIon	Response	Conc	Units	Dev(Min)

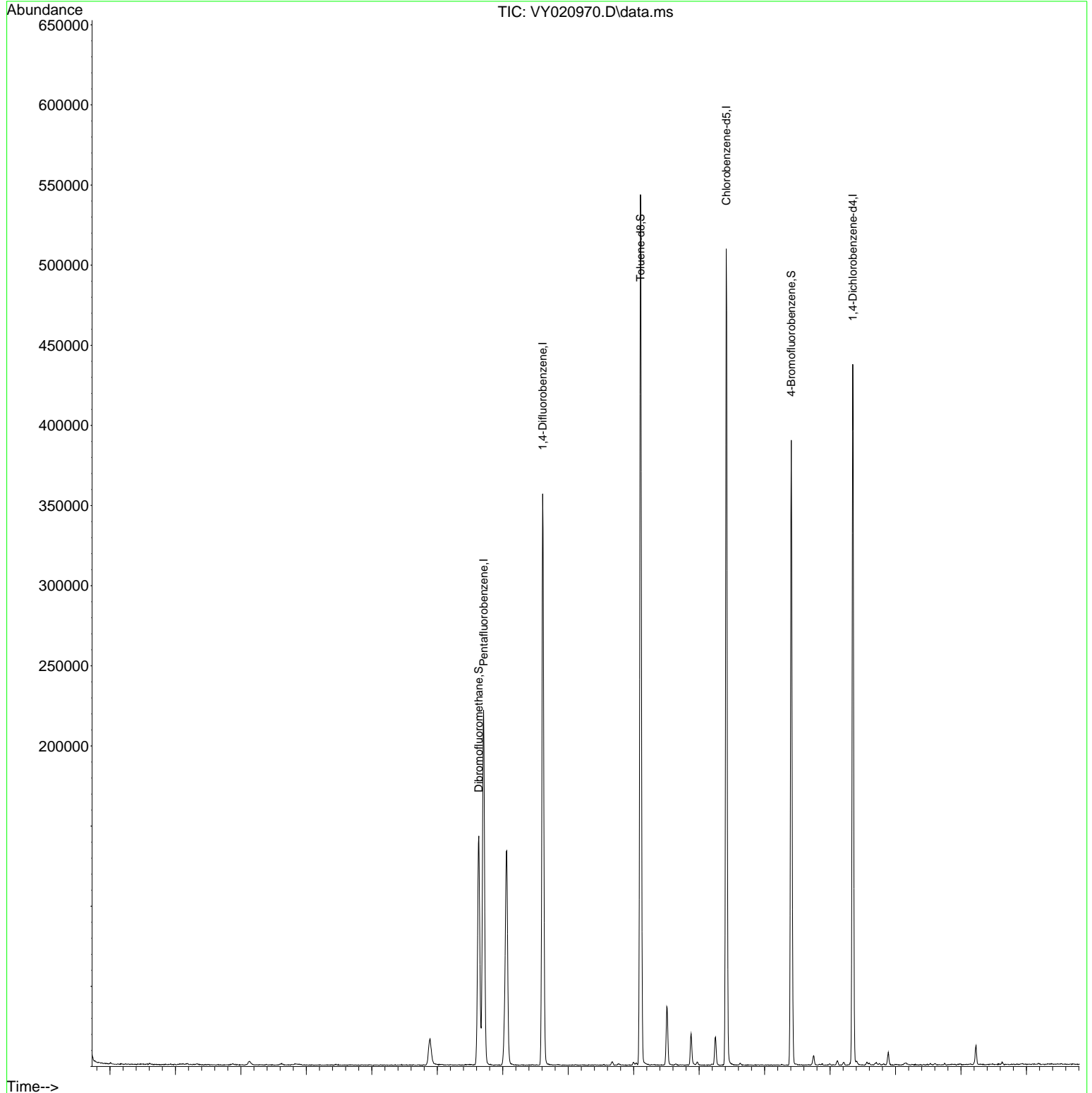
Internal Standards						
1) Pentafluorobenzene	7.707	168	181674	50.000	ug/l	-0.01
34) 1,4-Difluorobenzene	8.610	114	309941	50.000	ug/l	-0.02
63) Chlorobenzene-d5	11.414	117	279348	50.000	ug/l	-0.01
72) 1,4-Dichlorobenzene-d4	13.346	152	114838	50.000	ug/l	-0.01
System Monitoring Compounds						
33) 1,2-Dichloroethane-d4	8.061	65	95488	65.922	ug/l	-0.01
Spiked Amount	50.000	Range 50 - 163	Recovery	=	131.840%	
35) Dibromofluoromethane	7.634	113	101825	57.227	ug/l	-0.01
Spiked Amount	50.000	Range 54 - 147	Recovery	=	114.460%	
50) Toluene-d8	10.103	98	368400	53.379	ug/l	-0.01
Spiked Amount	50.000	Range 58 - 134	Recovery	=	106.760%	
62) 4-Bromofluorobenzene	12.408	95	116677	50.797	ug/l	0.00
Spiked Amount	50.000	Range 29 - 146	Recovery	=	101.600%	
Target Compounds						
16) Acetone	3.873	43	1044	5.320	ug/l #	87

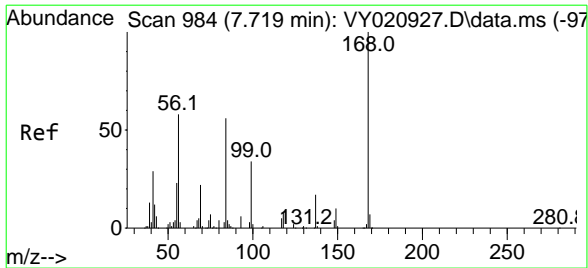
(#) = qualifier out of range (m) = manual integration (+) = signals summed

Data Path : Z:\voasrv\HPCHEM1\MSVOA_Y\Data\VY012925\
Data File : VY020970.D
Acq On : 29 Jan 2025 17:28
Operator : SY/MD
Sample : VI BLK
Misc : 5.00g/5.0mL/MSVOA_Y/SOIL
ALS Vial : 4 Sample Multiplier: 1

Instrument :
MSVOA_Y
ClientSampleId :
VI BLK

Quant Time: Jan 30 00:37:21 2025
Quant Method : Z:\voasrv\HPCHEM1\MSVOA_Y\methods\82Y012425S.M
Quant Title : SW846 8260
QLast Update : Sat Jan 25 01:12:18 2025
Response via : Initial Calibration

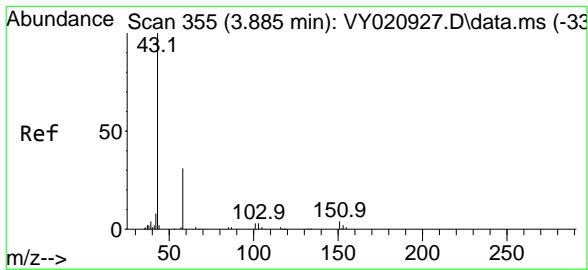
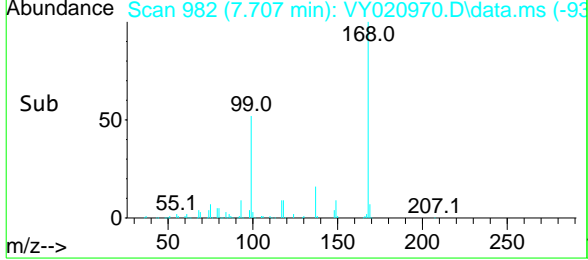
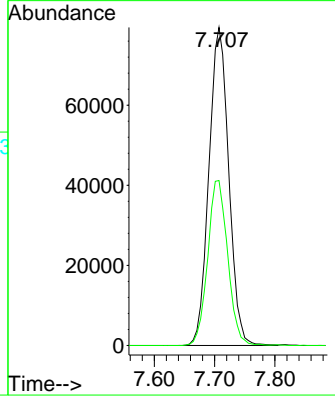
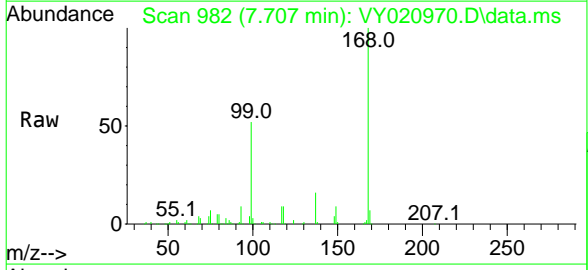




#1
 Pentafluorobenzene
 Concen: 50.000 ug/l
 RT: 7.707 min Scan# 98
 Delta R.T. -0.012 min
 Lab File: VY020970.D
 Acq: 29 Jan 2025 17:28

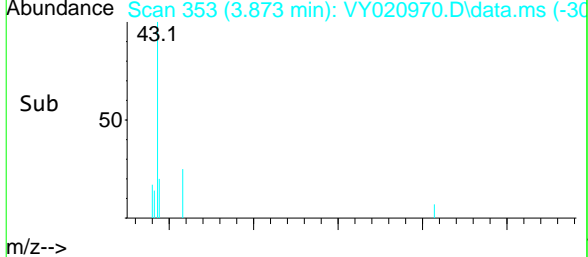
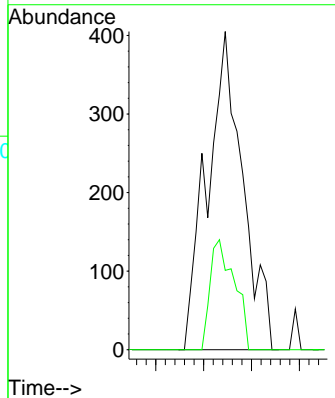
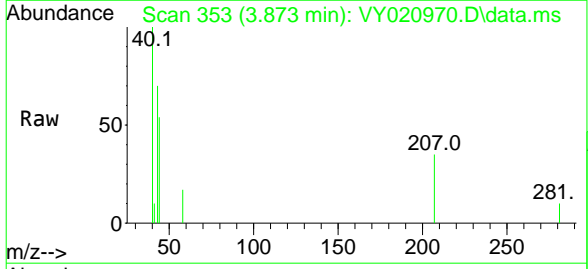
Instrument : MSVOA_Y
 ClientSampleId : VIBLK

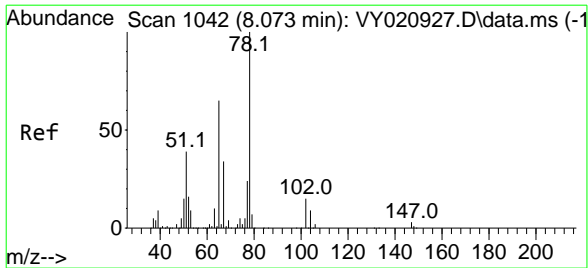
Tgt Ion: 168 Resp: 181674
 Ion Ratio Lower Upper
 168 100
 99 51.9 43.0 64.6



#16
 Acetone
 Concen: 5.320 ug/l
 RT: 3.873 min Scan# 353
 Delta R.T. -0.012 min
 Lab File: VY020970.D
 Acq: 29 Jan 2025 17:28

Tgt Ion: 43 Resp: 1044
 Ion Ratio Lower Upper
 43 100
 58 24.9 25.6 38.4#

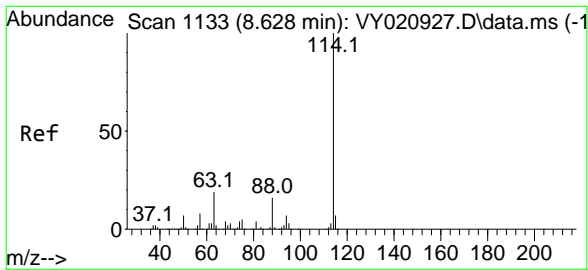
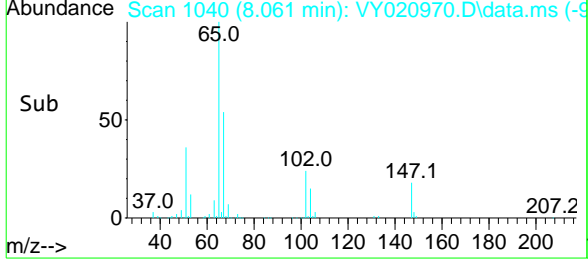
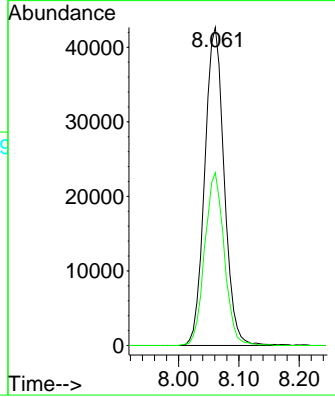
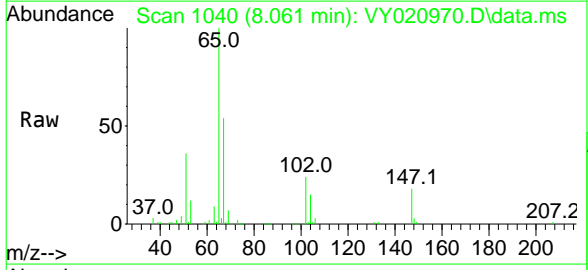




#33
 1,2-Dichloroethane-d4
 Concen: 65.922 ug/l
 RT: 8.061 min Scan# 1040
 Delta R.T. -0.012 min
 Lab File: VY020970.D
 Acq: 29 Jan 2025 17:28

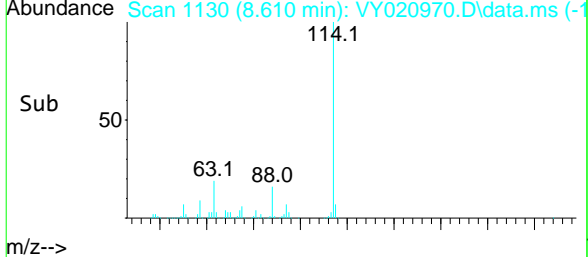
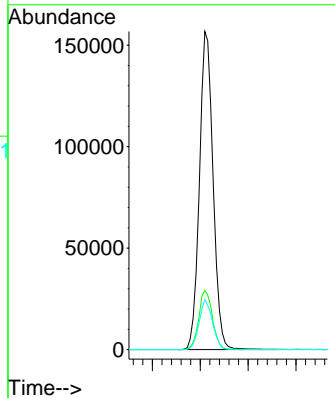
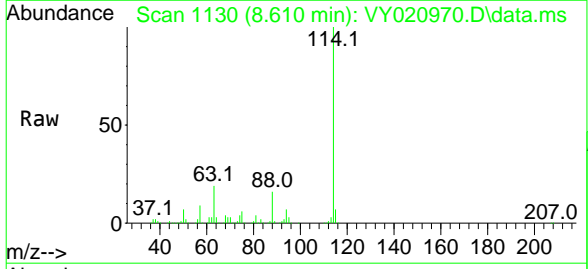
Instrument : MSVOA_Y
 ClientSampleId : VIBLK

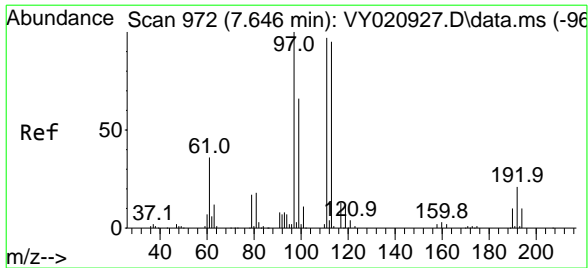
Tgt Ion: 65 Resp: 95488
 Ion Ratio Lower Upper
 65 100
 67 54.6 0.0 105.8



#34
 1,4-Difluorobenzene
 Concen: 50.000 ug/l
 RT: 8.610 min Scan# 1130
 Delta R.T. -0.018 min
 Lab File: VY020970.D
 Acq: 29 Jan 2025 17:28

Tgt Ion: 114 Resp: 309941
 Ion Ratio Lower Upper
 114 100
 63 18.6 0.0 38.4
 88 15.7 0.0 31.6

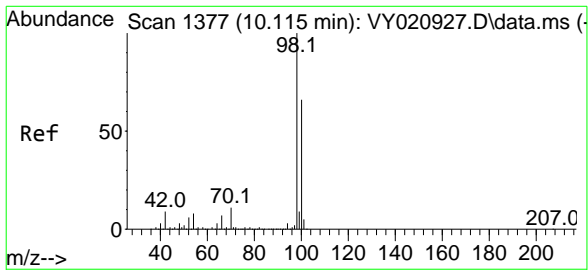
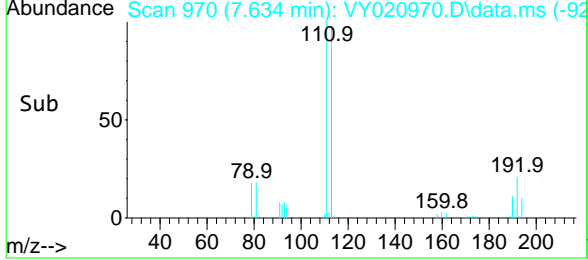
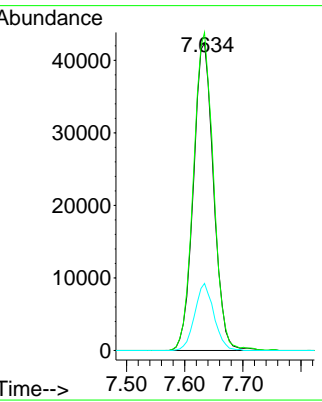
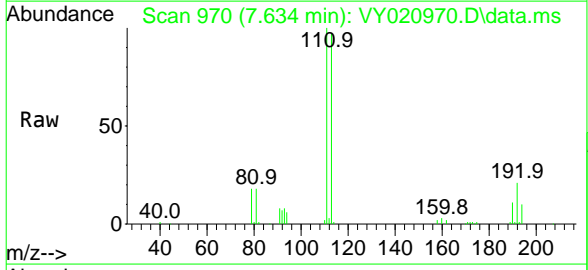




#35
 Dibromofluoromethane
 Concen: 57.227 ug/l
 RT: 7.634 min Scan# 97
 Delta R.T. -0.012 min
 Lab File: VY020970.D
 Acq: 29 Jan 2025 17:28

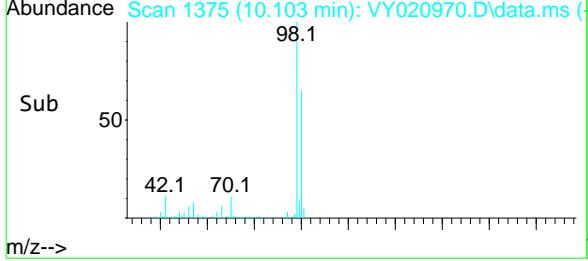
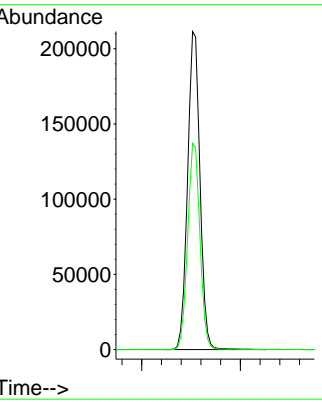
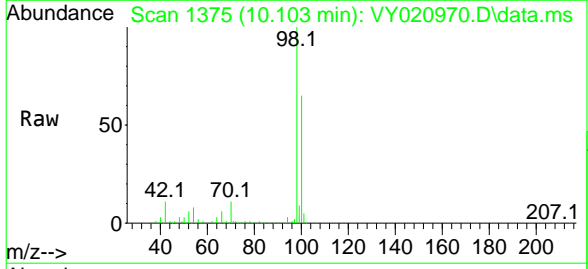
Instrument : MSVOA_Y
 ClientSampleId : VIBLK

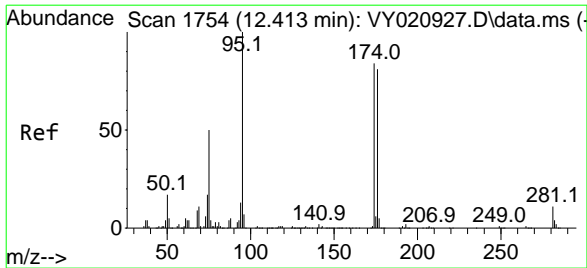
Tgt Ion	Resp	Lower	Upper
113	101825		
113	100		
111	103.0	82.3	123.5
192	20.9	17.4	26.2



#50
 Toluene-d8
 Concen: 53.379 ug/l
 RT: 10.103 min Scan# 1375
 Delta R.T. -0.012 min
 Lab File: VY020970.D
 Acq: 29 Jan 2025 17:28

Tgt Ion	Resp	Lower	Upper
98	368400		
98	100		
100	64.4	52.3	78.5

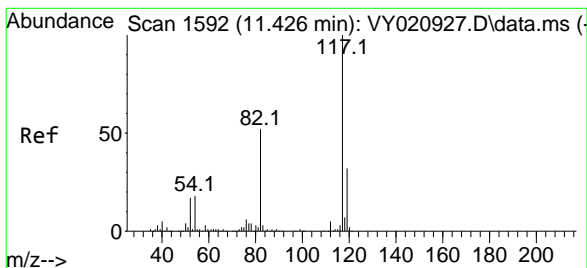
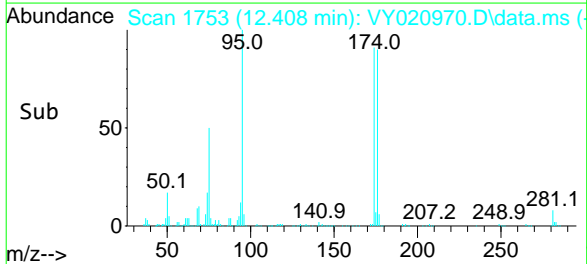
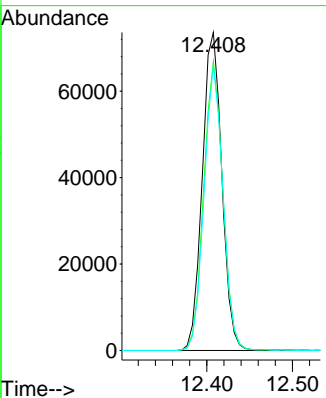
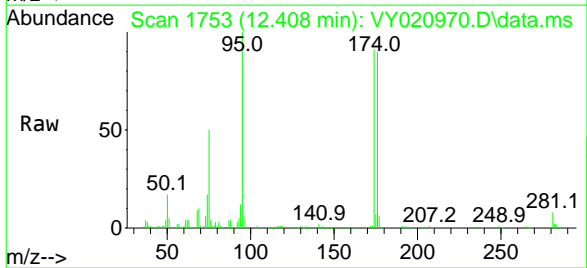




#62
 4-Bromofluorobenzene
 Concen: 50.797 ug/l
 RT: 12.408 min Scan# 17
 Delta R.T. -0.006 min
 Lab File: VY020970.D
 Acq: 29 Jan 2025 17:28

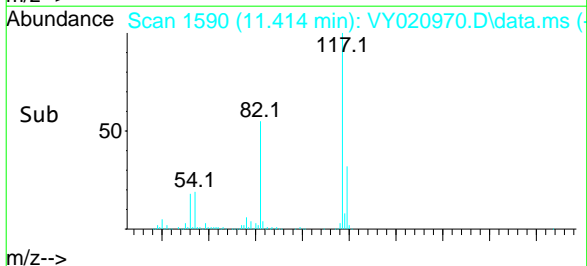
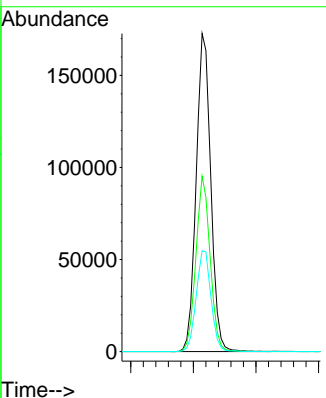
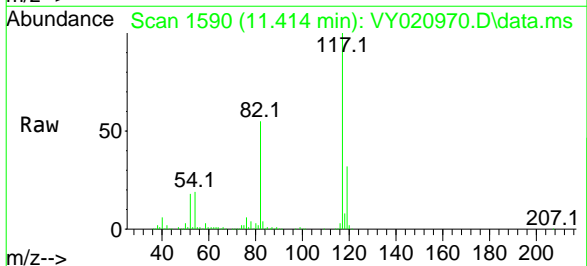
Instrument : MSVOA_Y
 ClientSampleId : VIBLK

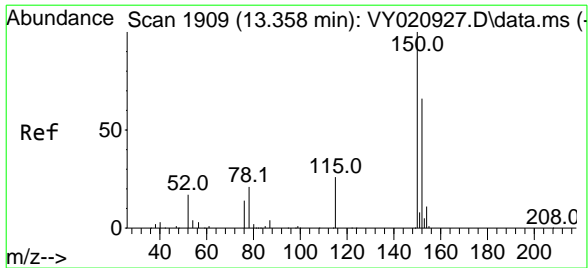
Tgt Ion	Resp	Lower	Upper
95	116677		
174	89.4	0.0	177.4
176	86.8	0.0	172.2



#63
 Chlorobenzene-d5
 Concen: 50.000 ug/l
 RT: 11.414 min Scan# 1590
 Delta R.T. -0.012 min
 Lab File: VY020970.D
 Acq: 29 Jan 2025 17:28

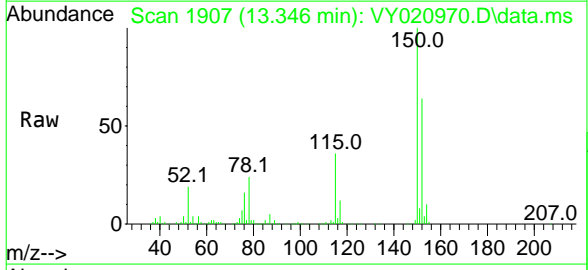
Tgt Ion	Resp	Lower	Upper
117	279348		
82	55.2	41.8	62.8
119	31.7	26.0	39.0





#72
 1,4-Dichlorobenzene-d4
 Concen: 50.000 ug/l
 RT: 13.346 min Scan# 19
 Delta R.T. -0.012 min
 Lab File: VY020970.D
 Acq: 29 Jan 2025 17:28

Instrument : MSVOA_Y
 ClientSampleId : VIBLK



Tgt Ion:152 Resp: 114838

Ion	Ratio	Lower	Upper
152	100		
115	57.3	29.0	87.0
150	158.5	0.0	347.6

