

Data Path : Z:\voasrv\HPCHEM1\MSVOA\_Y\Data\VY013025\  
 Data File : VY020985.D  
 Acq On : 30 Jan 2025 15:04  
 Operator : SY/MD  
 Sample : Q1206-01  
 Misc : 4.99g/5.0mL/MSVOA\_Y/SOIL/A  
 ALS Vial : 4 Sample Multiplier: 1

Instrument :  
 MSVOA\_Y  
 ClientSampleId :

Quant Time: Jan 31 04:41:14 2025  
 Quant Method : Z:\voasrv\HPCHEM1\MSVOA\_Y\methods\82Y013025S.M  
 Quant Title : SW846 8260  
 QLast Update : Fri Jan 31 02:19:37 2025  
 Response via : Initial Calibration

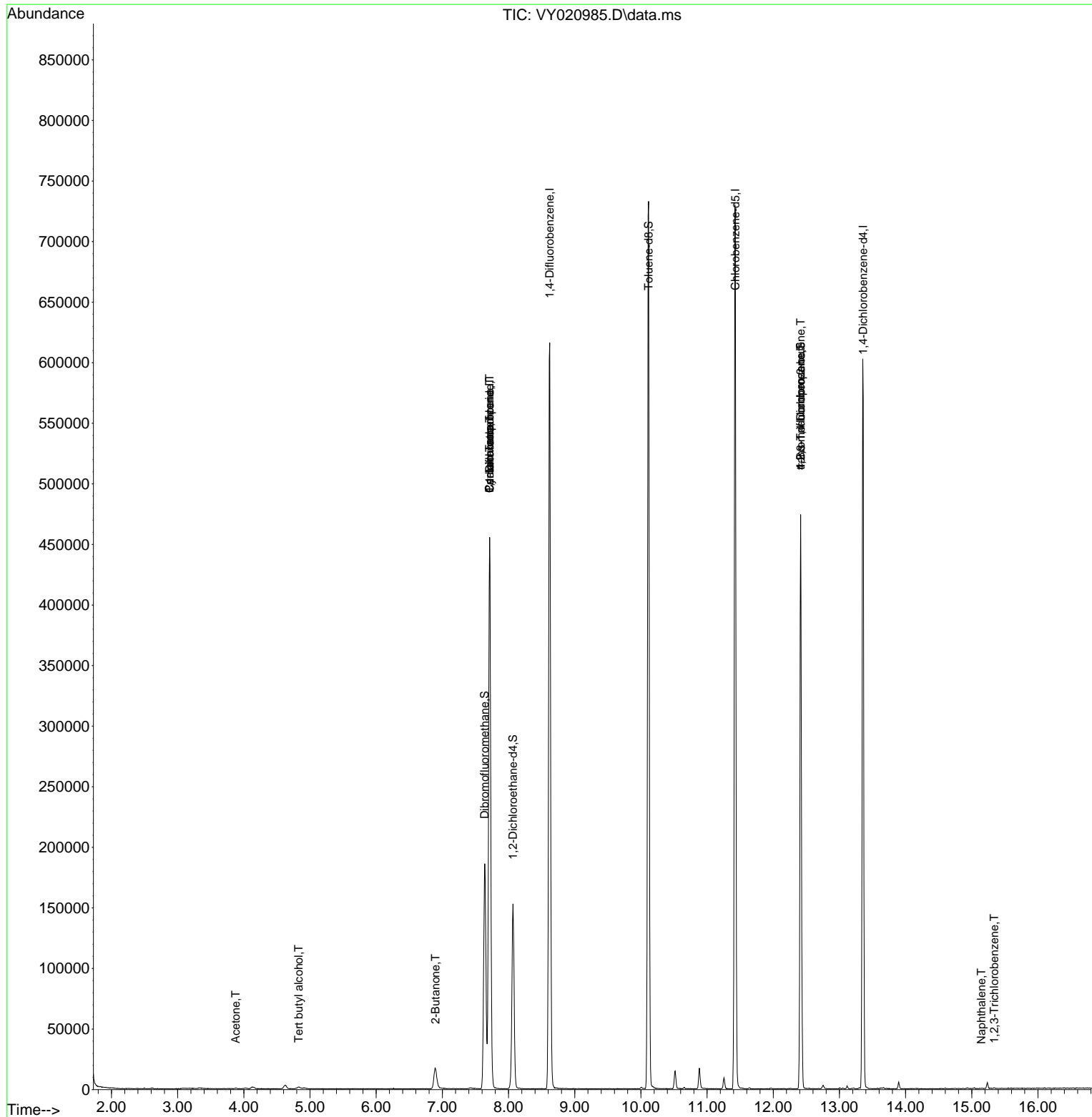
Compound	R.T.	QIon	Response	Conc	Units	Dev(Min)
-----						
Internal Standards						
1) Pentafluorobenzene	7.713	168	373692	50.000	ug/l	0.00
34) 1,4-Difluorobenzene	8.622	114	552163	50.000	ug/l	0.00
63) Chlorobenzene-d5	11.426	117	420163	50.000	ug/l	0.00
72) 1,4-Dichlorobenzene-d4	13.358	152	162403	50.000	ug/l	0.00
System Monitoring Compounds						
33) 1,2-Dichloroethane-d4	8.067	65	120334	37.821	ug/l	0.00
Spiked Amount	50.000	Range	50 - 163	Recovery	=	75.640%
35) Dibromofluoromethane	7.640	113	132917	40.041	ug/l	0.00
Spiked Amount	50.000	Range	54 - 147	Recovery	=	80.080%
50) Toluene-d8	10.115	98	501230	38.686	ug/l	0.00
Spiked Amount	50.000	Range	58 - 134	Recovery	=	77.380%
62) 4-Bromofluorobenzene	12.414	95	138642	31.890	ug/l	0.00
Spiked Amount	50.000	Range	29 - 146	Recovery	=	63.780%
Target Compounds						
					Qvalue	
11) Tert butyl alcohol	4.830	59	1809	7.783	ug/l #	73
16) Acetone	3.878	43	679	1.566	ug/l #	82
25) 2-Butanone	6.896	43	803	1.092	ug/l #	44
31) Cyclohexane	7.713	56	5815	1.039	ug/l #	1
36) 1,1-Dichloropropene	7.713	75	25360	5.355	ug/l #	50
38) Carbon Tetrachloride	7.713	117	35637	6.081	ug/l #	17
76) 1,2,3-Trichloropropane	12.414	75	68254	53.090	ug/l #	100
81) trans-1,4-Dichloro-2-b...	12.414	75	68254	110.206	ug/l #	15
95) Naphthalene	15.145	128	581	4.100	ug/l #	69
96) 1,2,3-Trichlorobenzene	15.340	180	248	4.579	ug/l #	44

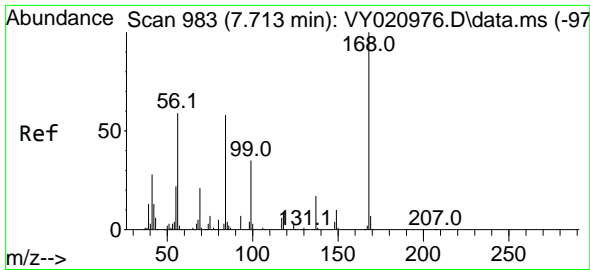
(#) = qualifier out of range (m) = manual integration (+) = signals summed

Data Path : Z:\voasrv\HPCHEM1\MSVOA\_Y\Data\VY013025\  
 Data File : VY020985.D  
 Acq On : 30 Jan 2025 15:04  
 Operator : SY/MD  
 Sample : Q1206-01  
 Misc : 4.99g/5.0mL/MSVOA\_Y/SOIL/A  
 ALS Vial : 4 Sample Multiplier: 1

Instrument :  
 MSVOA\_Y  
 ClientSampleId :

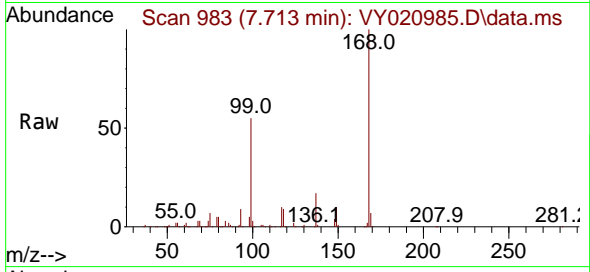
Quant Time: Jan 31 04:41:14 2025  
 Quant Method : Z:\voasrv\HPCHEM1\MSVOA\_Y\methods\82Y013025S.M  
 Quant Title : SW846 8260  
 QLast Update : Fri Jan 31 02:19:37 2025  
 Response via : Initial Calibration



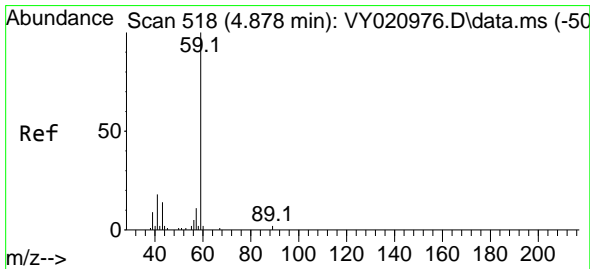
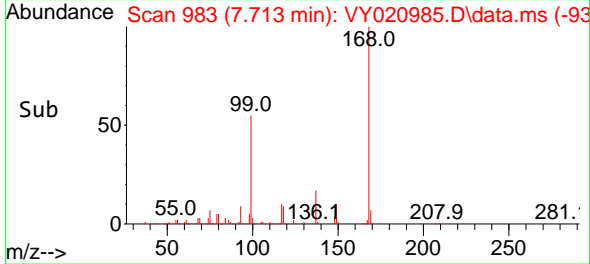
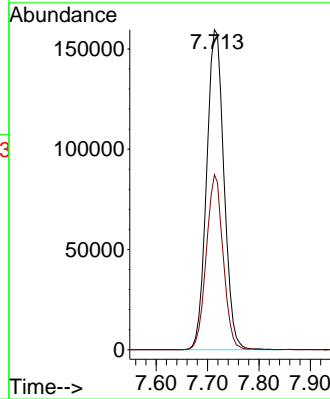


#1  
 Pentafluorobenzene  
 Concen: 50.000 ug/l  
 RT: 7.713 min Scan# 983  
 Delta R.T. 0.000 min  
 Lab File: VY020985.D  
 Acq: 30 Jan 2025 15:04

Instrument :  
 MSVOA\_Y  
 ClientSampleId :

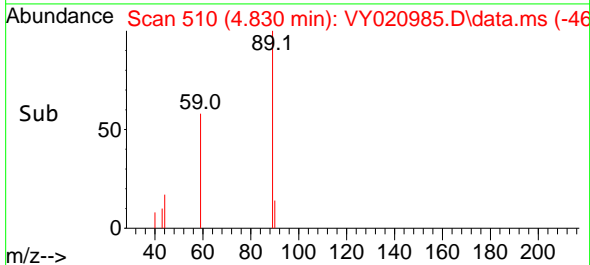
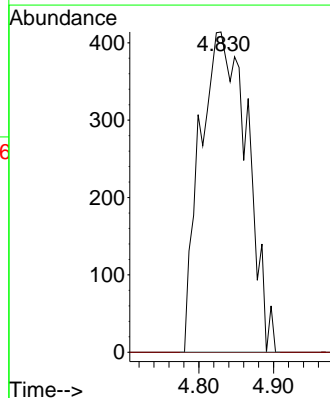
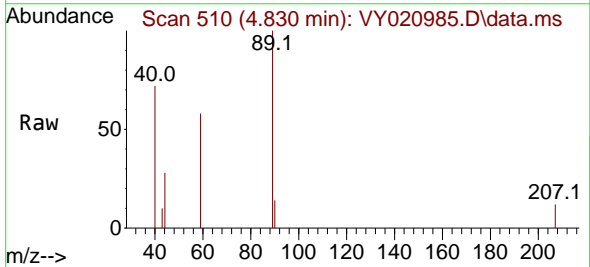


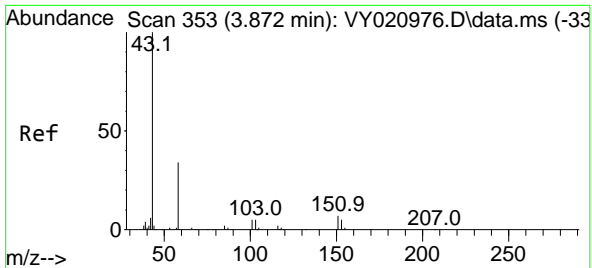
Tgt Ion:168 Resp: 373692  
 Ion Ratio Lower Upper  
 168 100  
 99 54.7 42.2 63.2



#11  
 Tert butyl alcohol  
 Concen: 7.783 ug/l  
 RT: 4.830 min Scan# 510  
 Delta R.T. -0.048 min  
 Lab File: VY020985.D  
 Acq: 30 Jan 2025 15:04

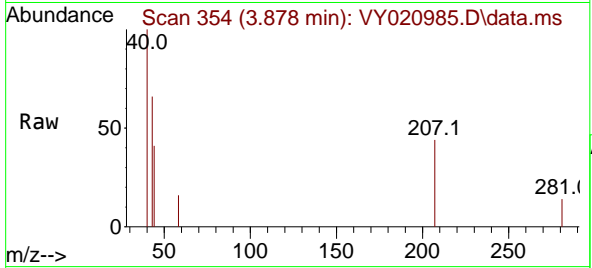
Tgt Ion: 59 Resp: 1809  
 Ion Ratio Lower Upper  
 59 100  
 57 0.0 7.8 11.8#



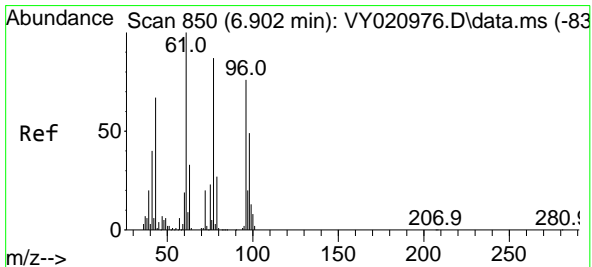
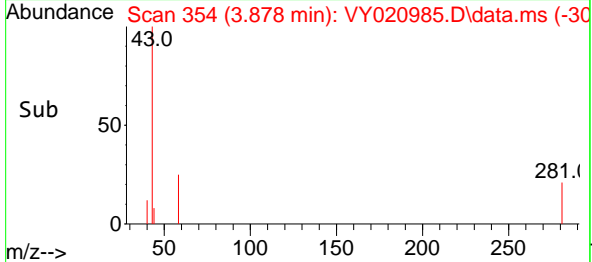
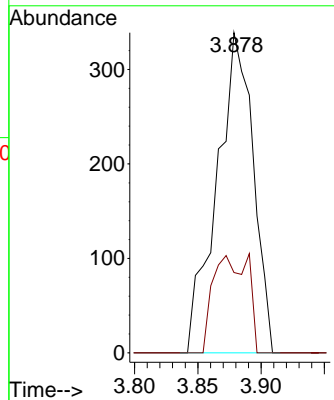


#16  
 Acetone  
 Concen: 1.566 ug/l  
 RT: 3.878 min Scan# 31  
 Delta R.T. 0.006 min  
 Lab File: VY020985.D  
 Acq: 30 Jan 2025 15:04

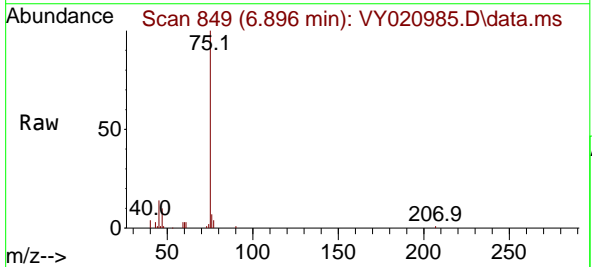
Instrument :  
 MSVOA\_Y  
 ClientSampleId :



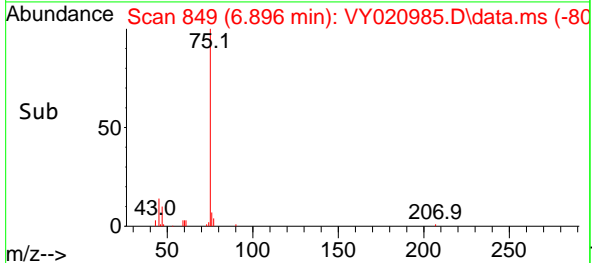
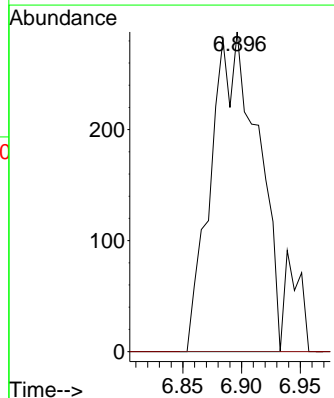
Tgt Ion: 43 Resp: 679  
 Ion Ratio Lower Upper  
 43 100  
 58 25.1 28.4 42.6#

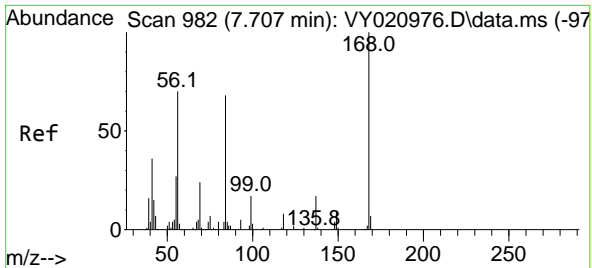


#25  
 2-Butanone  
 Concen: 1.092 ug/l  
 RT: 6.896 min Scan# 849  
 Delta R.T. -0.006 min  
 Lab File: VY020985.D  
 Acq: 30 Jan 2025 15:04



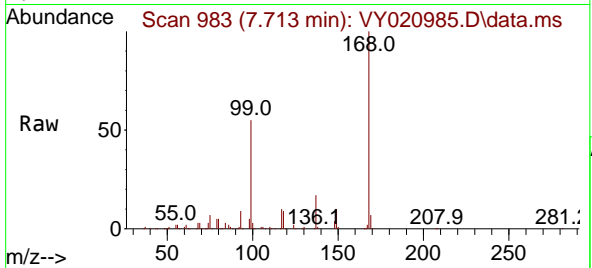
Tgt Ion: 43 Resp: 803  
 Ion Ratio Lower Upper  
 43 100  
 72 0.0 24.3 36.5#





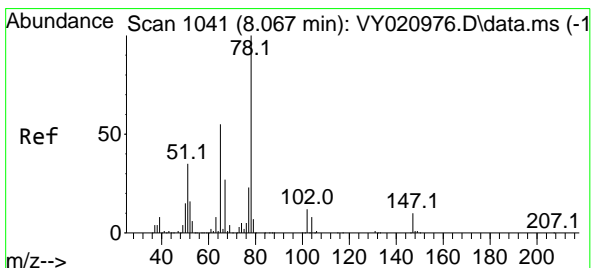
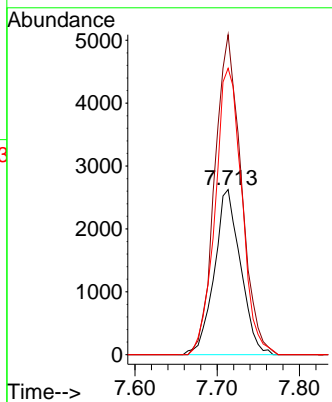
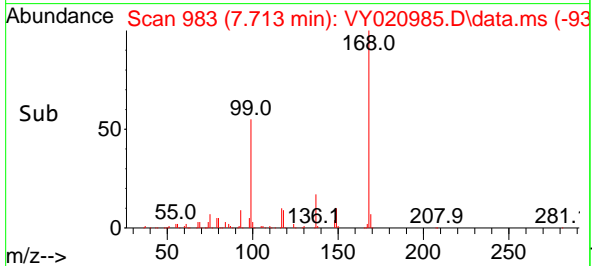
#31  
 Cyclohexane  
 Concen: 1.039 ug/l  
 RT: 7.713 min Scan# 983  
 Delta R.T. 0.006 min  
 Lab File: VY020985.D  
 Acq: 30 Jan 2025 15:04

Instrument : MSVOA\_Y  
 ClientSampleId :

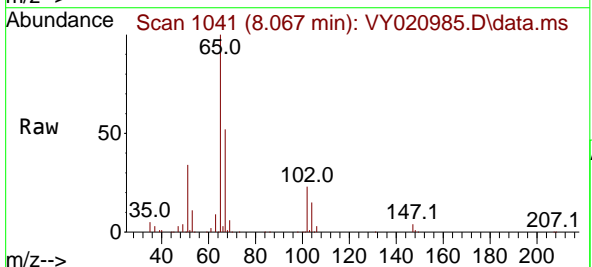


Tgt Ion: 56 Resp: 5815

Ion	Ratio	Lower	Upper
56	100		
69	193.9	27.7	41.5#
84	173.5	77.5	116.3#

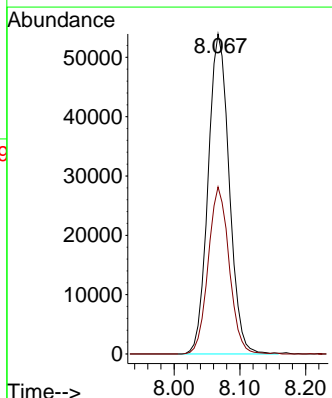
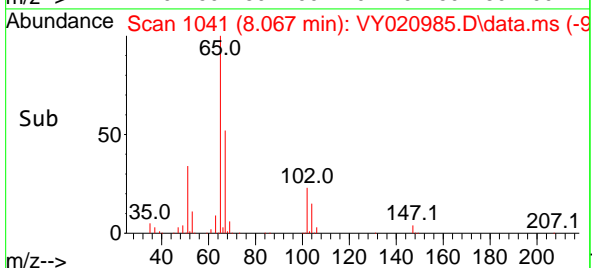


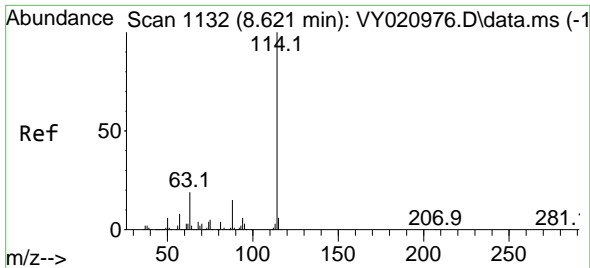
#33  
 1,2-Dichloroethane-d4  
 Concen: 37.821 ug/l  
 RT: 8.067 min Scan# 1041  
 Delta R.T. 0.000 min  
 Lab File: VY020985.D  
 Acq: 30 Jan 2025 15:04



Tgt Ion: 65 Resp: 120334

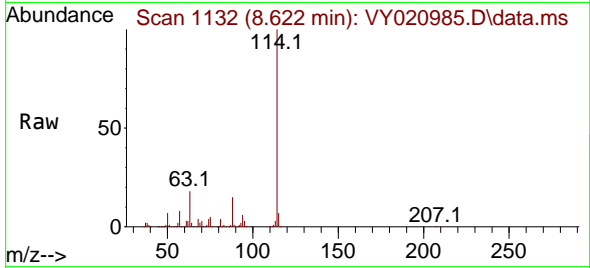
Ion	Ratio	Lower	Upper
65	100		
67	51.9	0.0	104.4





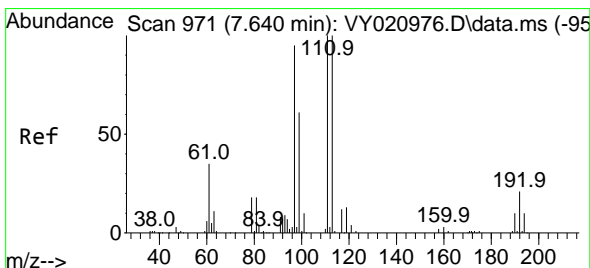
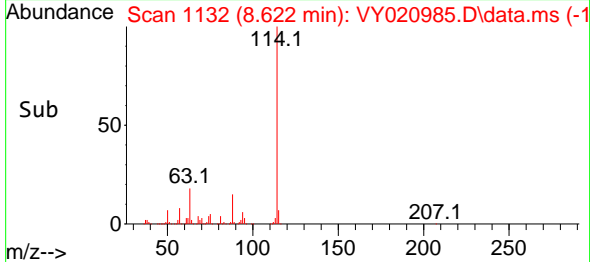
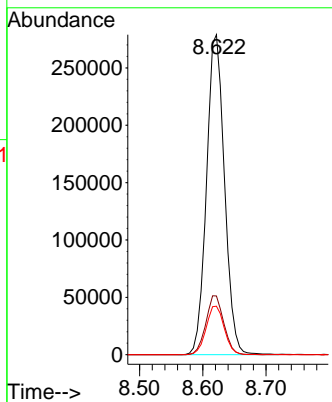
#34  
 1,4-Difluorobenzene  
 Concen: 50.000 ug/l  
 RT: 8.622 min Scan# 1132  
 Delta R.T. 0.000 min  
 Lab File: VY020985.D  
 Acq: 30 Jan 2025 15:04

Instrument : MSVOA\_Y  
 ClientSampleId :



Tgt Ion:114 Resp: 552163

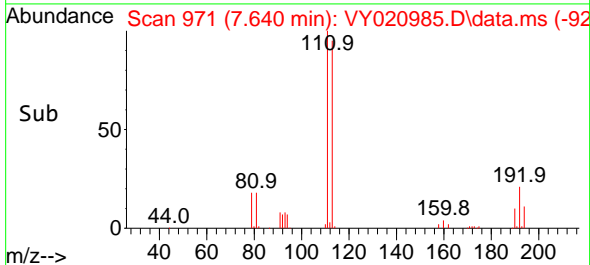
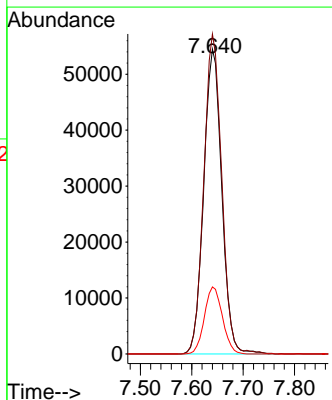
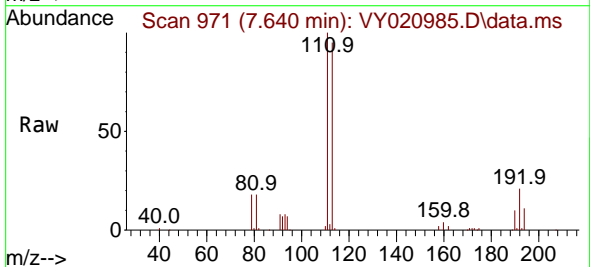
Ion	Ratio	Lower	Upper
114	100		
63	18.4	0.0	37.2
88	15.2	0.0	29.6

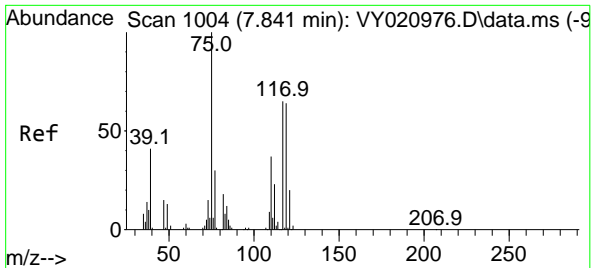


#35  
 Dibromofluoromethane  
 Concen: 40.041 ug/l  
 RT: 7.640 min Scan# 971  
 Delta R.T. 0.000 min  
 Lab File: VY020985.D  
 Acq: 30 Jan 2025 15:04

Tgt Ion:113 Resp: 132917

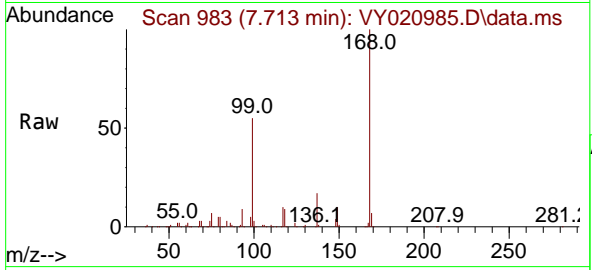
Ion	Ratio	Lower	Upper
113	100		
111	104.1	82.6	123.8
192	21.9	16.8	25.2





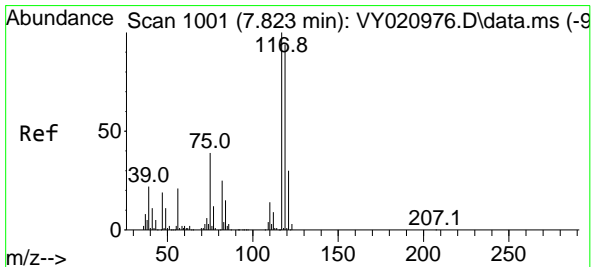
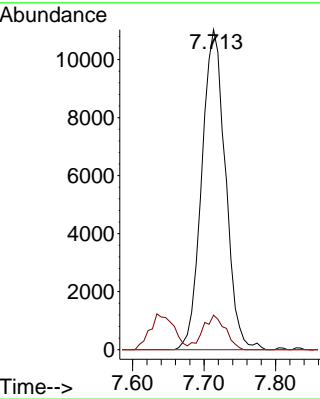
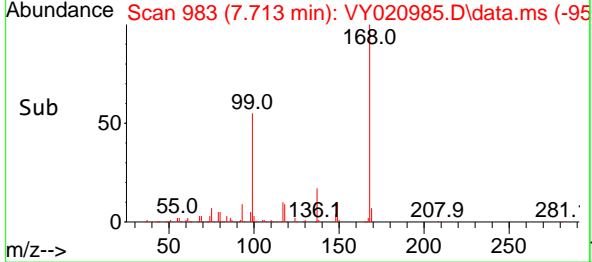
#36  
 1,1-Dichloropropene  
 Concen: 5.355 ug/l  
 RT: 7.713 min Scan# 983  
 Delta R.T. -0.128 min  
 Lab File: VY020985.D  
 Acq: 30 Jan 2025 15:04

Instrument : MSVOA\_Y  
 ClientSampleId :

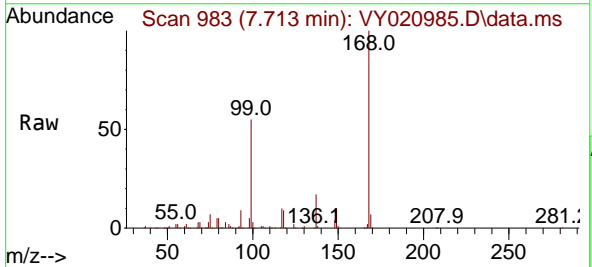


Tgt Ion: 75 Resp: 25360

Ion	Ratio	Lower	Upper
75	100		
110	10.3	18.4	55.2#
77	0.0	24.9	37.3#

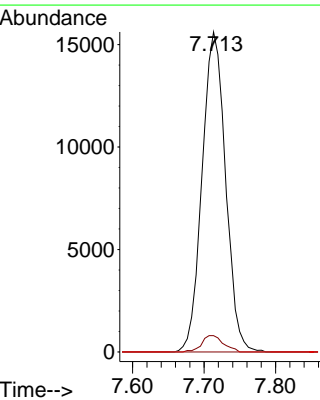
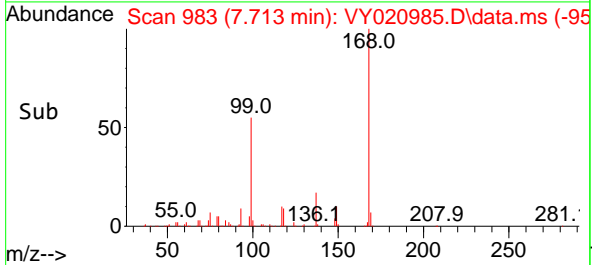


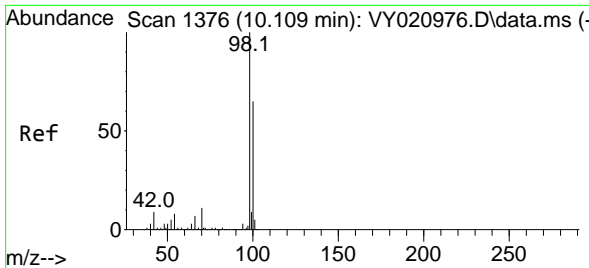
#38  
 Carbon Tetrachloride  
 Concen: 6.081 ug/l  
 RT: 7.713 min Scan# 983  
 Delta R.T. -0.110 min  
 Lab File: VY020985.D  
 Acq: 30 Jan 2025 15:04



Tgt Ion: 117 Resp: 35637

Ion	Ratio	Lower	Upper
117	100		
119	5.1	75.0	112.6#
121	0.0	24.2	36.2#

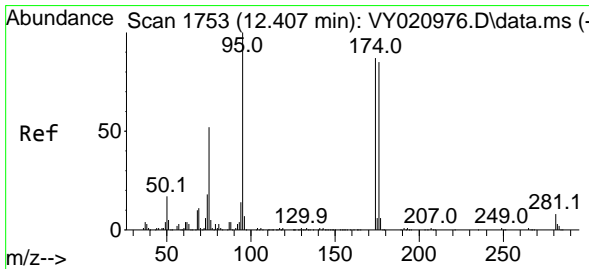
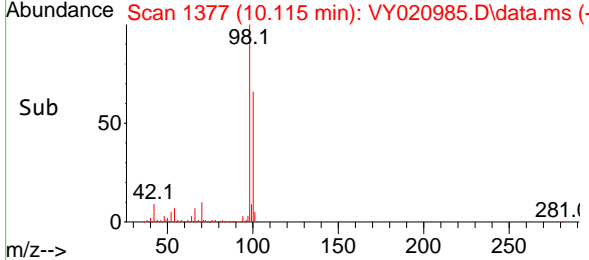
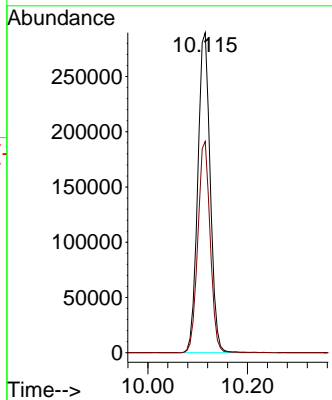
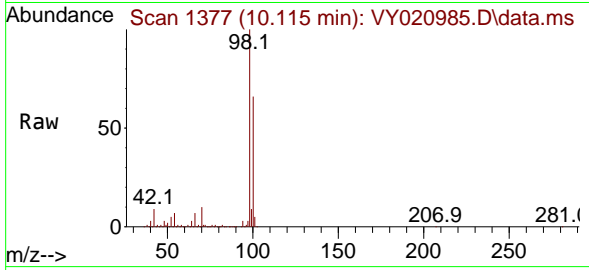




#50  
 Toluene-d8  
 Concen: 38.686 ug/l  
 RT: 10.115 min Scan# 11  
 Delta R.T. 0.006 min  
 Lab File: VY020985.D  
 Acq: 30 Jan 2025 15:04

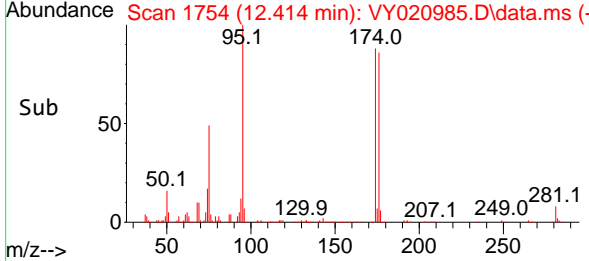
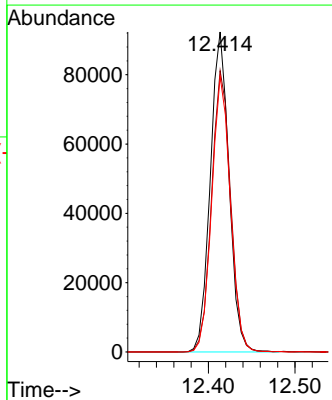
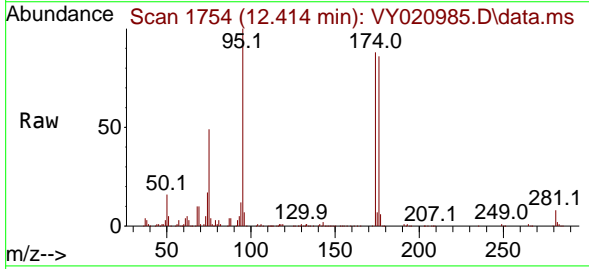
Instrument :  
 MSVOA\_Y  
 ClientSampleId :

Tgt Ion: 98 Resp: 501230  
 Ion Ratio Lower Upper  
 98 100  
 100 65.3 52.6 79.0

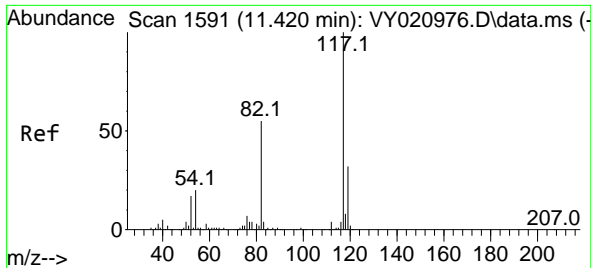


#62  
 4-Bromofluorobenzene  
 Concen: 31.890 ug/l  
 RT: 12.414 min Scan# 1754  
 Delta R.T. 0.006 min  
 Lab File: VY020985.D  
 Acq: 30 Jan 2025 15:04

Tgt Ion: 95 Resp: 138642  
 Ion Ratio Lower Upper  
 95 100  
 174 89.5 0.0 181.2  
 176 86.1 0.0 175.2

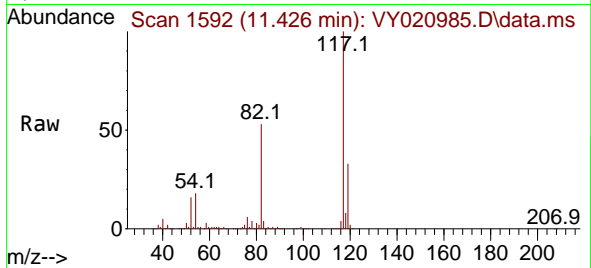






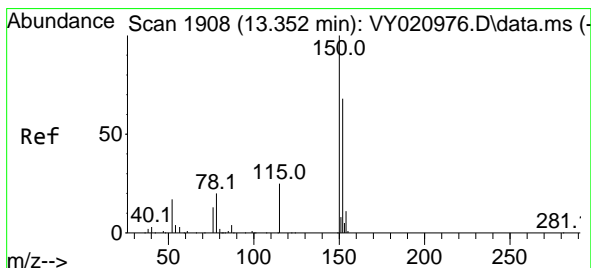
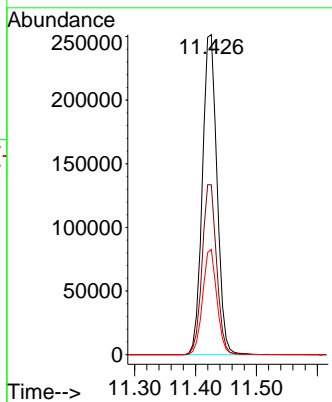
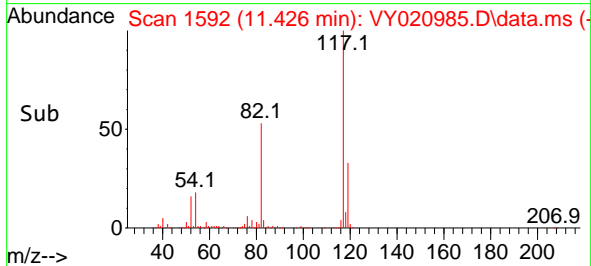
#63  
 Chlorobenzene-d5  
 Concen: 50.000 ug/l  
 RT: 11.426 min Scan# 11  
 Delta R.T. 0.006 min  
 Lab File: VY020985.D  
 Acq: 30 Jan 2025 15:04

Instrument : MSVOA\_Y  
 ClientSampleId :

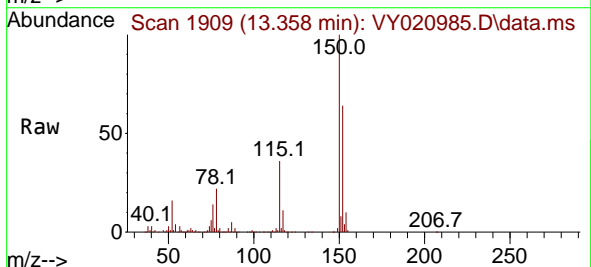


Tgt Ion:117 Resp: 420163

Ion	Ratio	Lower	Upper
117	100		
82	53.1	44.2	66.2
119	32.9	25.9	38.9

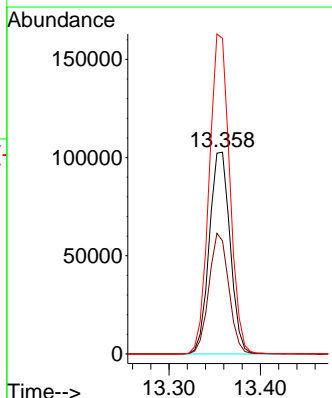
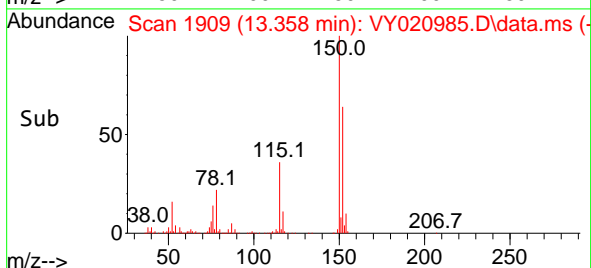


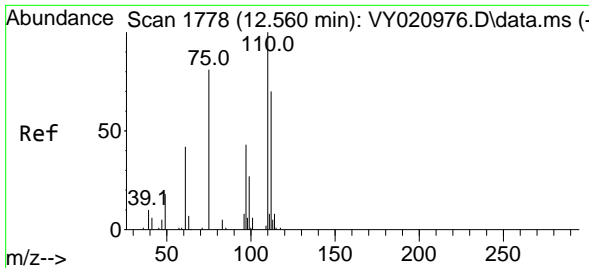
#72  
 1,4-Dichlorobenzene-d4  
 Concen: 50.000 ug/l  
 RT: 13.358 min Scan# 1909  
 Delta R.T. 0.006 min  
 Lab File: VY020985.D  
 Acq: 30 Jan 2025 15:04



Tgt Ion:152 Resp: 162403

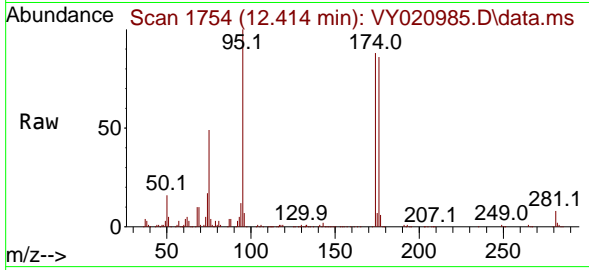
Ion	Ratio	Lower	Upper
152	100		
115	57.3	28.4	85.2
150	156.5	0.0	342.8



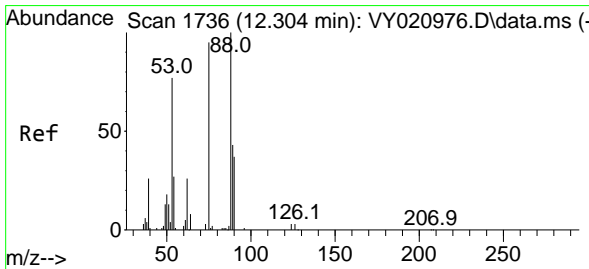
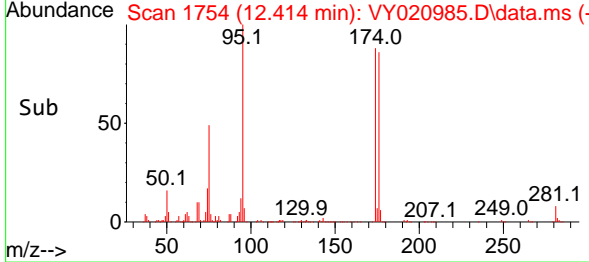
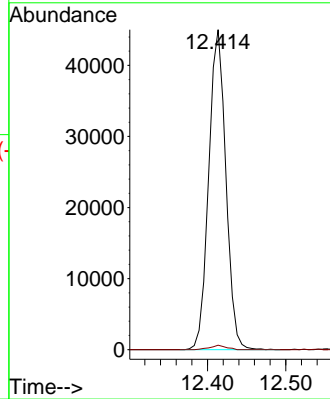


#76  
 1,2,3-Trichloropropane  
 Concen: 53.090 ug/l  
 RT: 12.414 min Scan# 1754  
 Delta R.T. -0.146 min  
 Lab File: VY020985.D  
 Acq: 30 Jan 2025 15:04

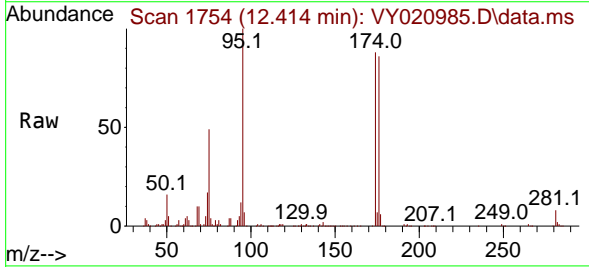
Instrument :  
 MSVOA\_Y  
 ClientSampleId :



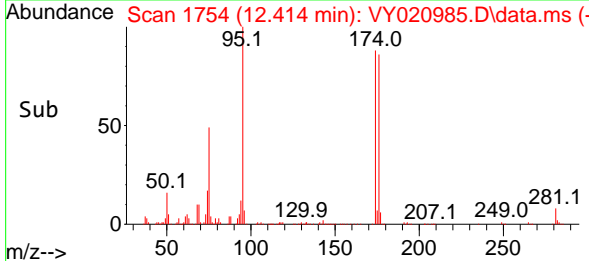
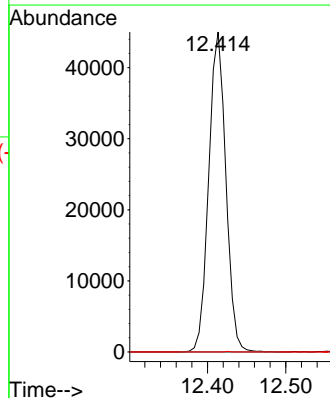
Tgt Ion: 75 Resp: 68254  
 Ion Ratio Lower Upper  
 75 100  
 77 1.3 0.0 0.0#

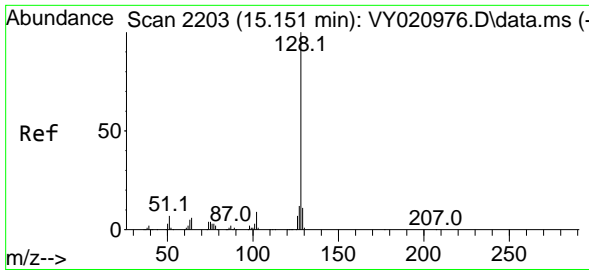


#81  
 trans-1,4-Dichloro-2-butene  
 Concen: 110.206 ug/l  
 RT: 12.414 min Scan# 1754  
 Delta R.T. 0.110 min  
 Lab File: VY020985.D  
 Acq: 30 Jan 2025 15:04



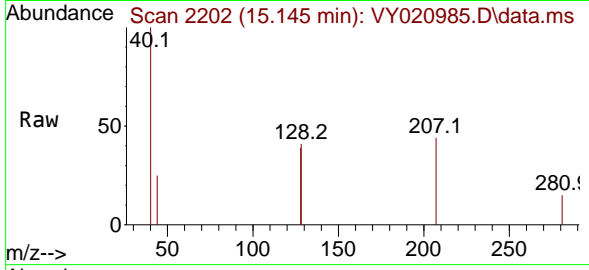
Tgt Ion: 75 Resp: 68254  
 Ion Ratio Lower Upper  
 75 100  
 53 0.0 68.6 103.0#  
 89 0.1 38.1 57.1#





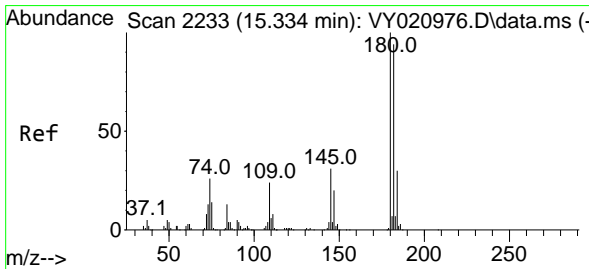
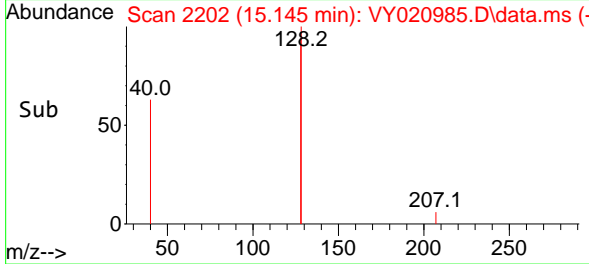
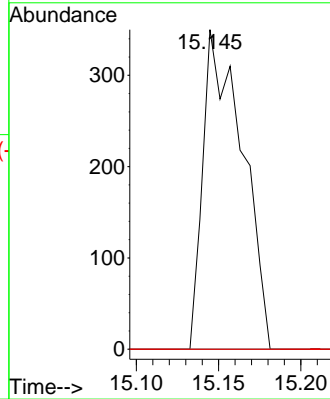
#95  
 Naphthalene  
 Concen: 4.100 ug/l  
 RT: 15.145 min Scan# 21  
 Delta R.T. -0.006 min  
 Lab File: VY020985.D  
 Acq: 30 Jan 2025 15:04

Instrument :  
 MSVOA\_Y  
 ClientSampleId :

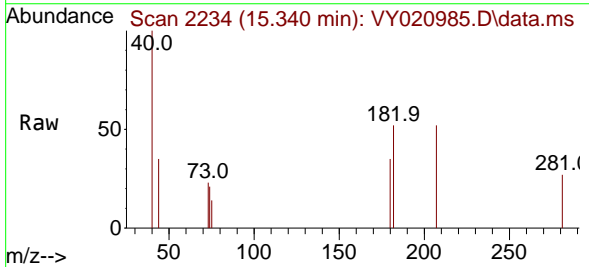


Tgt Ion:128 Resp: 581

Ion	Ratio	Lower	Upper
128	100		
127	0.0	10.2	15.4#
129	0.0	8.8	13.2#



#96  
 1,2,3-Trichlorobenzene  
 Concen: 4.579 ug/l  
 RT: 15.340 min Scan# 2234  
 Delta R.T. 0.006 min  
 Lab File: VY020985.D  
 Acq: 30 Jan 2025 15:04



Tgt Ion:180 Resp: 248

Ion	Ratio	Lower	Upper
180	100		
182	150.0	47.7	143.1#
145	0.0	15.6	46.7#

