

Data Path : Z:\voasrv\HPCHEM1\MSVOA_Y\Data\VY020123\
 Data File : VY012438.D
 Acq On : 01 Feb 2023 13:30
 Operator : KP/MD
 Sample : 01383-02
 Misc : 5.06g/5.0mL/MSVOA_Y/SOIL
 ALS Vial : 8 Sample Multiplier: 1

Instrument :
 MSVOA_Y
 ClientSampleId :
 2875

Quant Time: Feb 01 23:04:21 2023
 Quant Method : Z:\voasrv\HPCHEM1\MSVOA_Y\methods\82Y011623S.M
 Quant Title : SW846 8260
 QLast Update : Tue Jan 17 04:31:47 2023
 Response via : Initial Calibration

Compound	R.T.	QIon	Response	Conc	Units	Dev(Min)

Internal Standards						
1) Pentafluorobenzene	7.789	168	199309	50.000	ug/l	0.00
34) 1,4-Difluorobenzene	8.691	114	331745	50.000	ug/l	0.00
63) Chlorobenzene-d5	11.490	117	305587	50.000	ug/l	0.00
72) 1,4-Dichlorobenzene-d4	13.428	152	129564	50.000	ug/l	0.00
System Monitoring Compounds						
33) 1,2-Dichloroethane-d4	8.143	65	116113	72.016	ug/l	0.00
Spiked Amount	50.000	Range	50 - 163	Recovery	=	144.040%
35) Dibromofluoromethane	7.716	113	99236	56.494	ug/l	0.00
Spiked Amount	50.000	Range	54 - 147	Recovery	=	112.980%
50) Toluene-d8	10.179	98	385693	64.639	ug/l	0.00
Spiked Amount	50.000	Range	49 - 140	Recovery	=	129.280%
62) 4-Bromofluorobenzene	12.483	95	123980	50.068	ug/l	0.00
Spiked Amount	50.000	Range	25 - 144	Recovery	=	100.140%

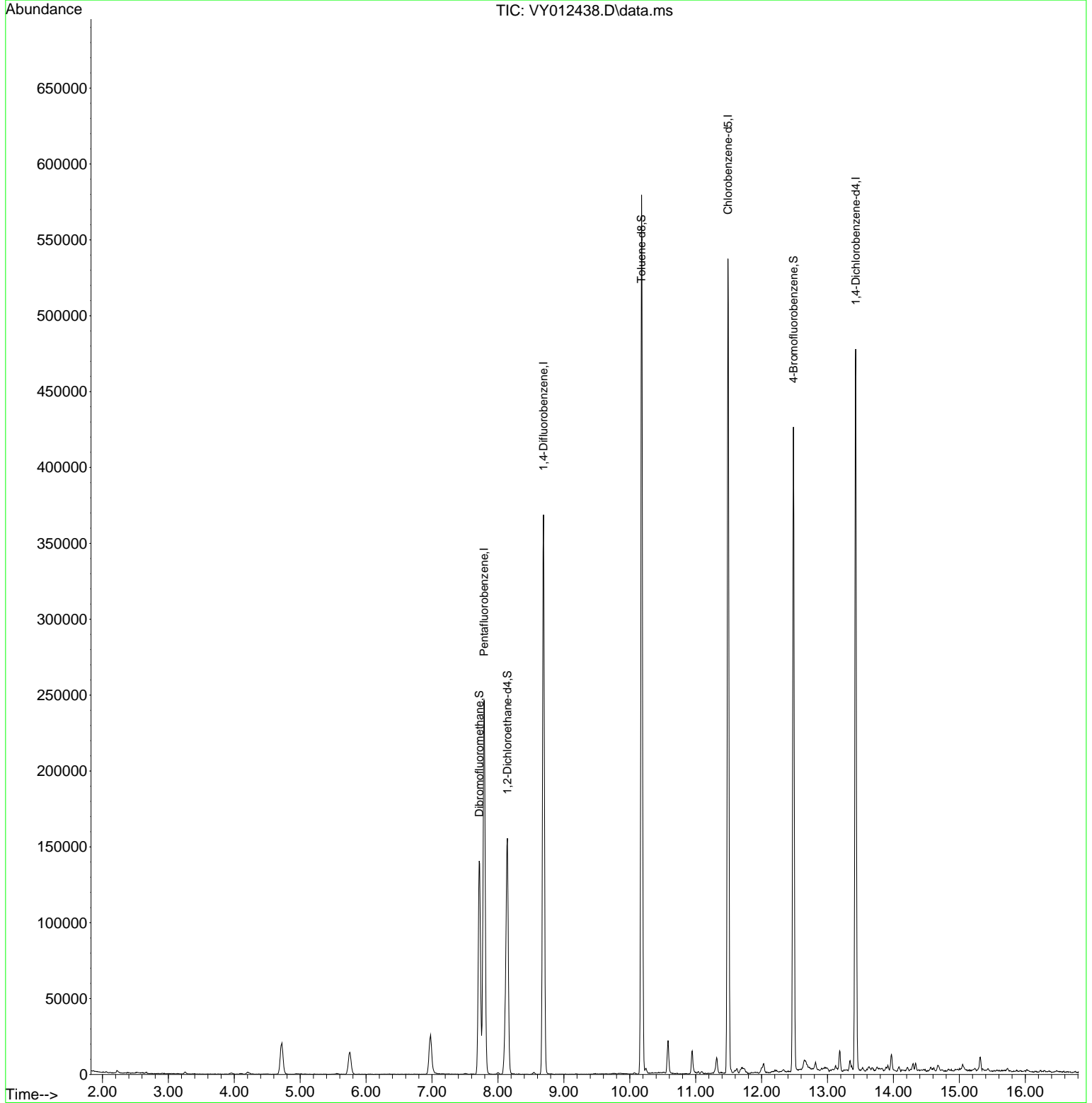
Target Compounds Qvalue

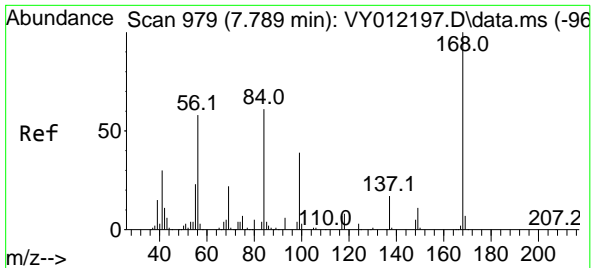
(#) = qualifier out of range (m) = manual integration (+) = signals summed

Data Path : Z:\voasrv\HPCHEM1\MSVOA_Y\Data\VY020123\
 Data File : VY012438.D
 Acq On : 01 Feb 2023 13:30
 Operator : KP/MD
 Sample : 01383-02
 Misc : 5.06g/5.0mL/MSVOA_Y/SOIL
 ALS Vial : 8 Sample Multiplier: 1

Instrument :
 MSVOA_Y
 ClientSampleId :
 2875

Quant Time: Feb 01 23:04:21 2023
 Quant Method : Z:\voasrv\HPCHEM1\MSVOA_Y\methods\82Y011623S.M
 Quant Title : SW846 8260
 QLast Update : Tue Jan 17 04:31:47 2023
 Response via : Initial Calibration

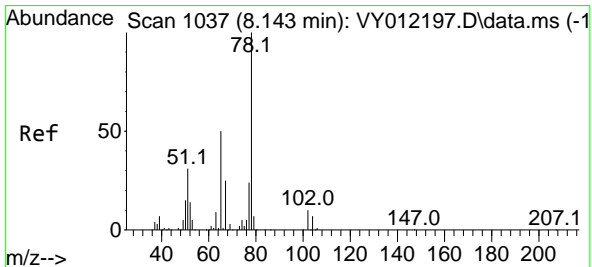
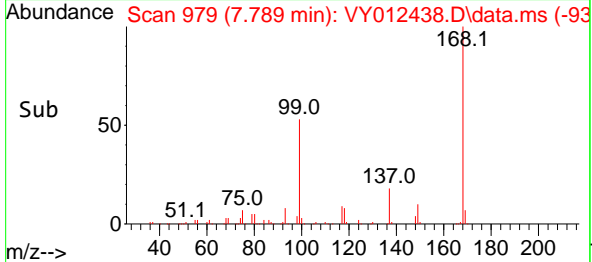
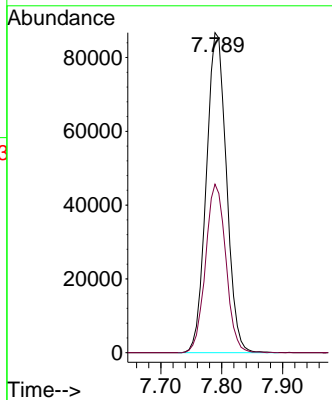
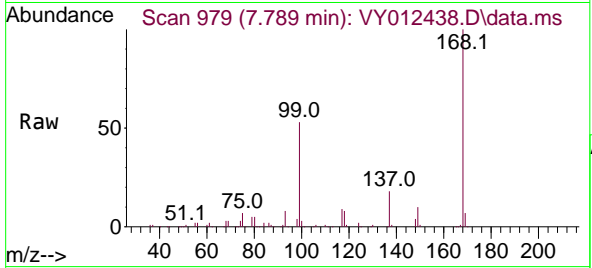




#1
 Pentafluorobenzene
 Concen: 50.000 ug/l
 RT: 7.789 min Scan# 91
 Delta R.T. -0.000 min
 Lab File: VY012438.D
 Acq: 01 Feb 2023 13:30

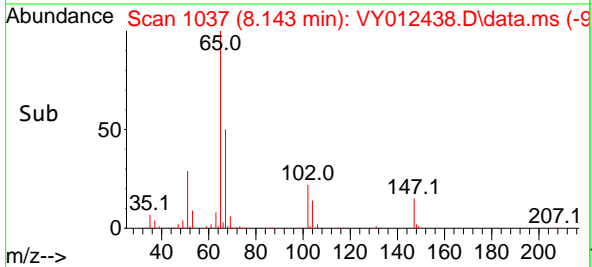
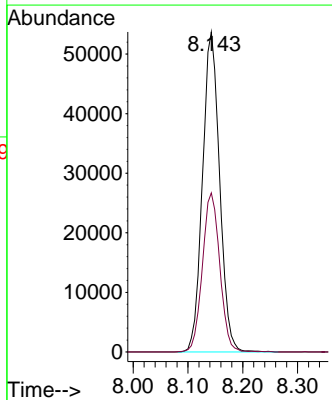
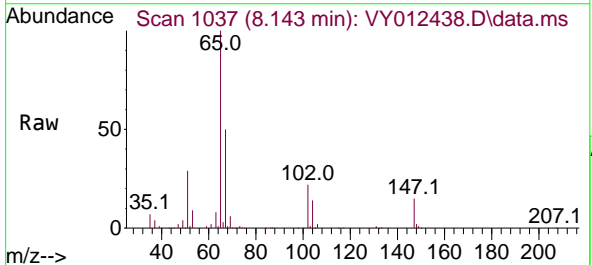
Instrument :
 MSVOA_Y
 ClientSampleId :
 2875

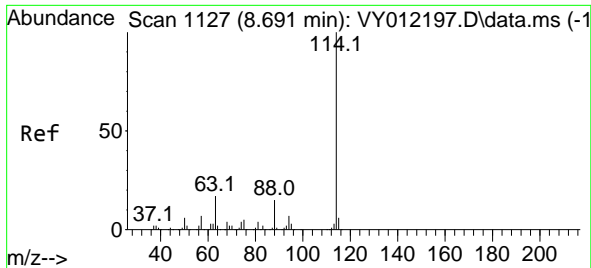
Tgt Ion:168 Resp: 199309
 Ion Ratio Lower Upper
 168 100
 99 52.7 44.0 66.0



#33
 1,2-Dichloroethane-d4
 Concen: 72.016 ug/l
 RT: 8.143 min Scan# 1037
 Delta R.T. -0.000 min
 Lab File: VY012438.D
 Acq: 01 Feb 2023 13:30

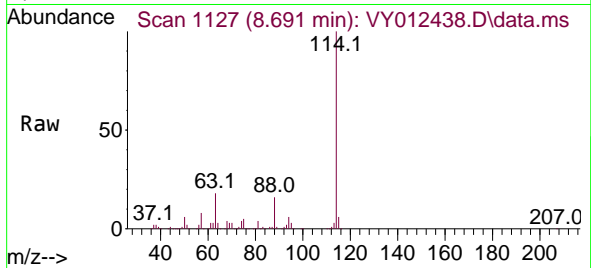
Tgt Ion: 65 Resp: 116113
 Ion Ratio Lower Upper
 65 100
 67 50.5 0.0 103.2



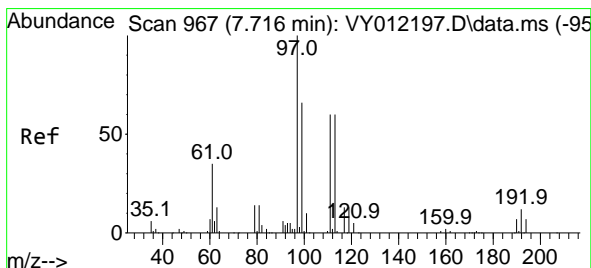
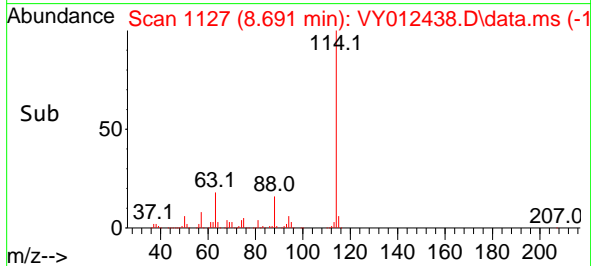
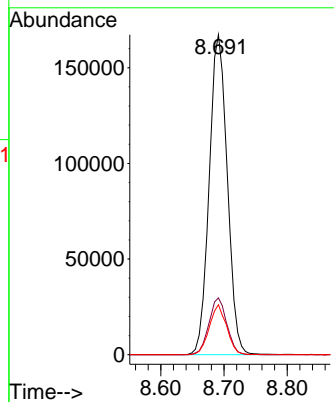


#34
 1,4-Difluorobenzene
 Concen: 50.000 ug/l
 RT: 8.691 min Scan# 1127
 Delta R.T. 0.000 min
 Lab File: VY012438.D
 Acq: 01 Feb 2023 13:30

Instrument : MSVOA_Y
 ClientSampleId : 2875

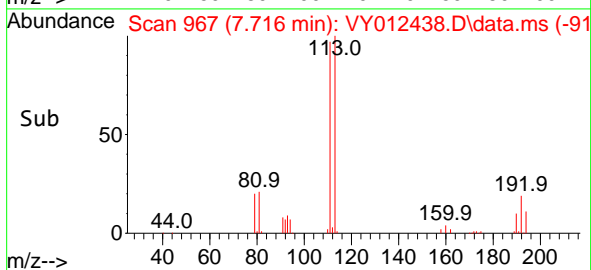
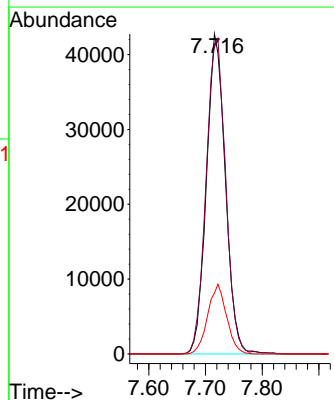
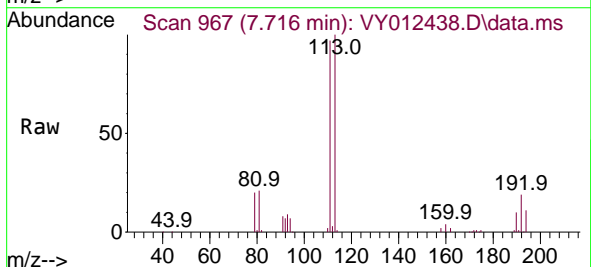


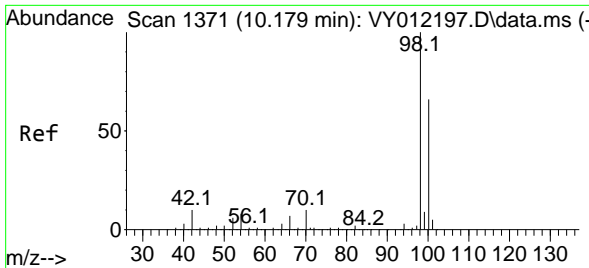
Tgt Ion:114 Resp: 331745
 Ion Ratio Lower Upper
 114 100
 63 17.7 0.0 39.6
 88 15.6 0.0 32.2



#35
 Dibromofluoromethane
 Concen: 56.494 ug/l
 RT: 7.716 min Scan# 967
 Delta R.T. -0.000 min
 Lab File: VY012438.D
 Acq: 01 Feb 2023 13:30

Tgt Ion:113 Resp: 99236
 Ion Ratio Lower Upper
 113 100
 111 102.5 83.0 124.4
 192 21.7 16.0 24.0

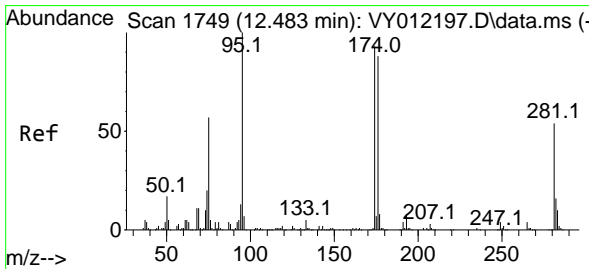
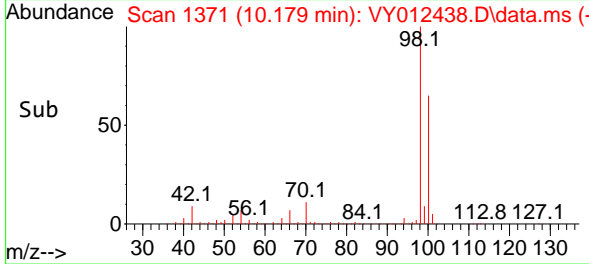
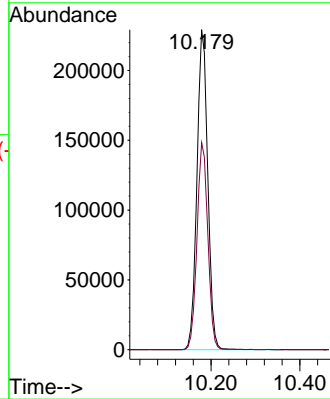
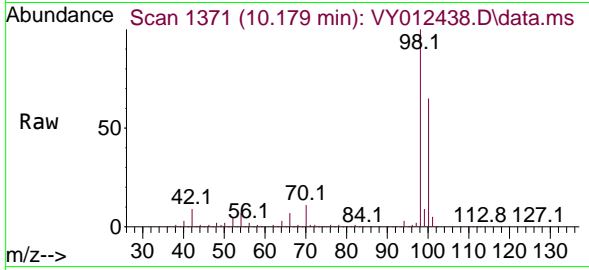




#50
 Toluene-d8
 Concen: 64.639 ug/l
 RT: 10.179 min Scan# 11
 Delta R.T. -0.000 min
 Lab File: VY012438.D
 Acq: 01 Feb 2023 13:30

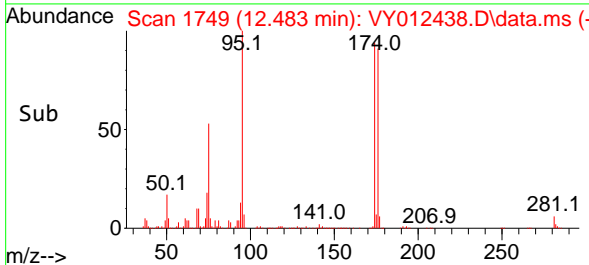
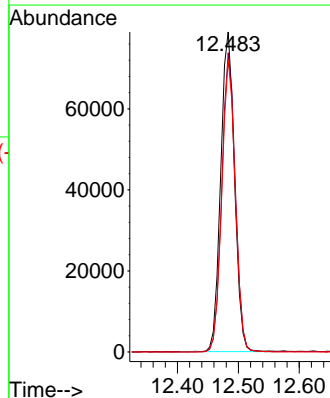
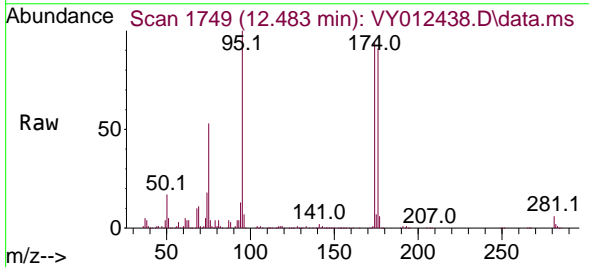
Instrument :
 MSVOA_Y
 ClientSampleId :
 2875

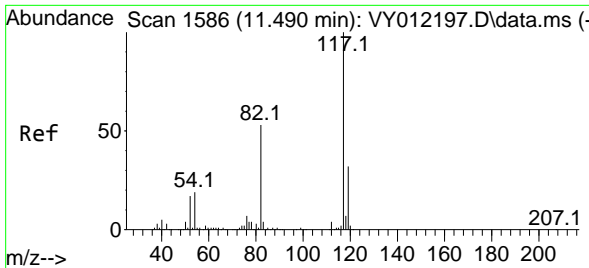
Tgt Ion: 98 Resp: 385693
 Ion Ratio Lower Upper
 98 100
 100 65.0 51.9 77.9



#62
 4-Bromofluorobenzene
 Concen: 50.068 ug/l
 RT: 12.483 min Scan# 1749
 Delta R.T. 0.000 min
 Lab File: VY012438.D
 Acq: 01 Feb 2023 13:30

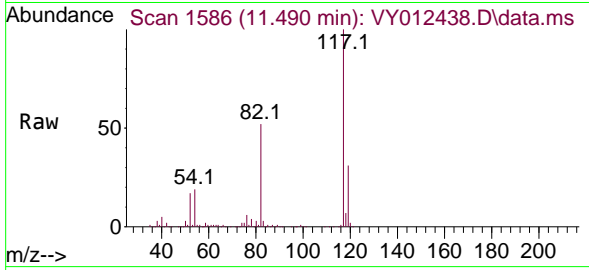
Tgt Ion: 95 Resp: 123980
 Ion Ratio Lower Upper
 95 100
 174 92.2 0.0 172.0
 176 89.0 0.0 167.6





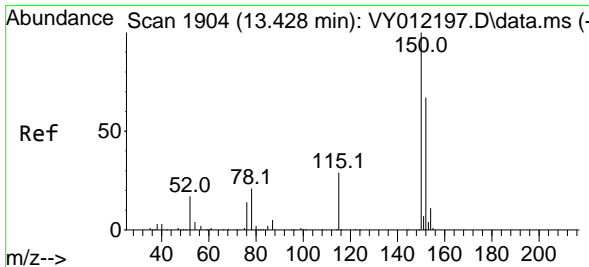
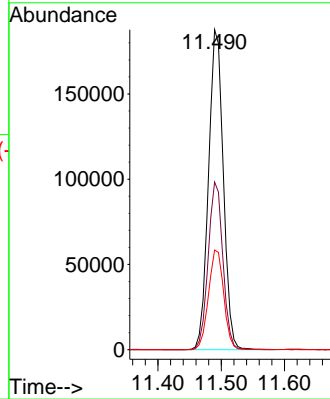
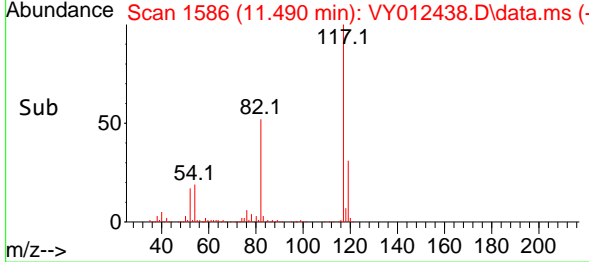
#63
 Chlorobenzene-d5
 Concen: 50.000 ug/l
 RT: 11.490 min Scan# 111
 Delta R.T. -0.000 min
 Lab File: VY012438.D
 Acq: 01 Feb 2023 13:30

Instrument : MSVOA_Y
 ClientSampleId : 2875

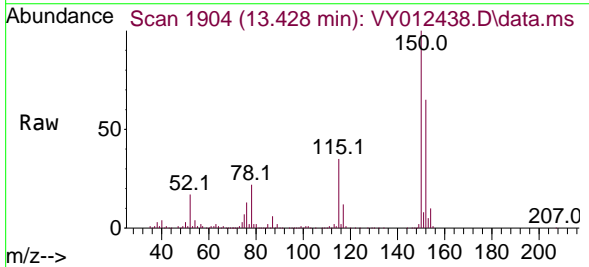


Tgt Ion:117 Resp: 305587

Ion	Ratio	Lower	Upper
117	100		
82	52.4	44.8	67.2
119	31.2	25.4	38.2



#72
 1,4-Dichlorobenzene-d4
 Concen: 50.000 ug/l
 RT: 13.428 min Scan# 1904
 Delta R.T. 0.006 min
 Lab File: VY012438.D
 Acq: 01 Feb 2023 13:30



Tgt Ion:152 Resp: 129564

Ion	Ratio	Lower	Upper
152	100		
115	55.7	29.1	87.3
150	155.5	0.0	342.6

