

Data Path : Z:\voasrv\HPCHEM1\MSVOA_Y\Data\VY020123\
 Data File : VY012444.D
 Acq On : 01 Feb 2023 16:02
 Operator : KP/MD
 Sample : 01386-09
 Misc : 6.58g/5.0mL/MSVOA_Y/SOIL
 ALS Vial : 14 Sample Multiplier: 1

Instrument :
 MSVOA_Y
 ClientSampleId :
 JPP-14-013123

Integration Parameters: RTEINT.P

Integrator: RTE
 Smoothing : ON Filtering: 5
 Sampling : 1 Min Area: 3 % of largest Peak
 Start Thrs: 0.2 Max Peaks: 100
 Stop Thrs : 0 Peak Location: TOP

If leading or trailing edge < 100 prefer < Baseline drop else tangent >
 Peak separation: 5

Method : Z:\voasrv\HPCHEM1\MSVOA_Y\methods\82Y011623S.M
 Title : SW846 8260

Signal : TIC: VY012444.D\data.ms

peak #	R.T. min	first scan	max scan	last scan	PK TY	peak height	corr. area	corr. % max.	% of total
1	4.716	466	475	487	rVB2	7321	21560	2.38%	0.432%
2	7.716	957	967	973	rBV	127380	305262	33.64%	6.118%
3	7.789	973	979	994	rVB	221716	504345	55.58%	10.107%
4	8.142	1027	1037	1049	rBV	131234	283717	31.26%	5.686%
5	8.691	1119	1127	1141	rBV	340182	658955	72.61%	13.206%
6	10.179	1363	1371	1380	rBV	543670	907477	100.00%	18.186%
7	11.489	1578	1586	1598	rBV	514784	828528	91.30%	16.604%
8	12.483	1742	1749	1768	rVB2	422610	668383	73.65%	13.395%
9	13.428	1893	1904	1911	rBV	503813	785195	86.53%	15.736%
10	13.526	1917	1920	1928	rVB	7388	11785	1.30%	0.236%
11	13.965	1986	1992	2003	rVB	8732	14642	1.61%	0.293%

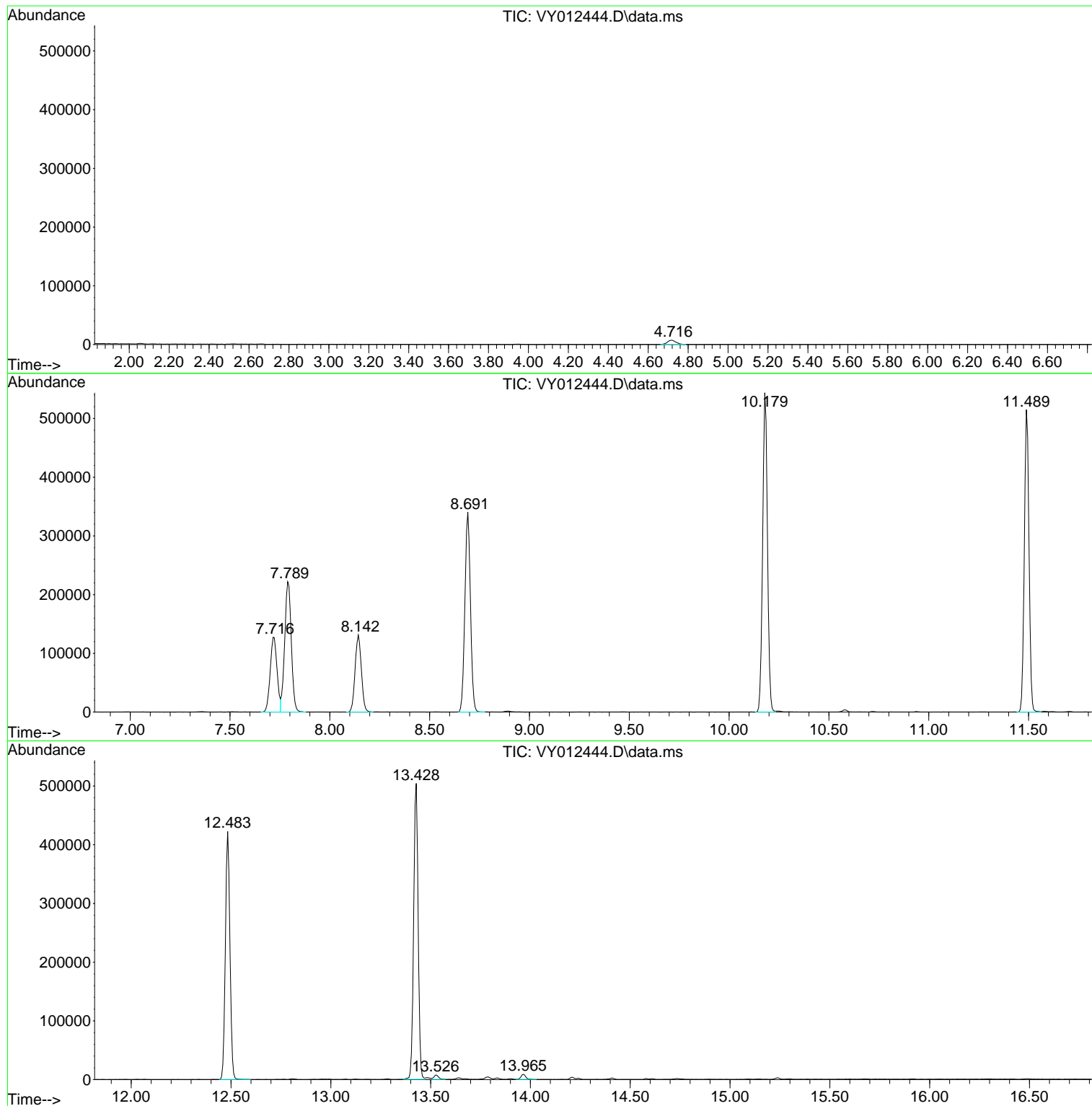
Sum of corrected areas: 4989849

Data Path : Z:\voasrv\HPCHEM1\MSVOA_Y\Data\VY020123\
Data File : VY012444.D
Acq On : 01 Feb 2023 16:02
Operator : KP/MD
Sample : 01386-09
Misc : 6.58g/5.0mL/MSVOA_Y/SOIL
ALS Vial : 14 Sample Multiplier: 1

Instrument :
MSVOA_Y
ClientSampleId :
JPP-14-013123

Quant Method : Z:\voasrv\HPCHEM1\MSVOA_Y\methods\82Y011623S.M
Quant Title : SW846 8260

TIC Library : C:\Database\NIST0.L
TIC Integration Parameters: LSCINT.P



Library Search Compound Report

Data Path : Z:\voasrv\HPCHEM1\MSVOA_Y\Data\VY020123\
Data File : VY012444.D
Acq On : 01 Feb 2023 16:02
Operator : KP/MD
Sample : 01386-09
Misc : 6.58g/5.0mL/MSVOA_Y/SOIL
ALS Vial : 14 Sample Multiplier: 1

Instrument :
MSVOA_Y
ClientSampleId :
JPP-14-013123

Quant Method : Z:\voasrv\HPCHEM1\MSVOA_Y\methods\82Y011623S.M
Quant Title : SW846 8260

TIC Library : C:\Database\NIST20.L
TIC Integration Parameters: LSCINT.P

No Library Search Compounds Detected

Data Path : Z:\voasrv\HPCHEM1\MSVOA_Y\Data\VY020123\
Data File : VY012444.D
Acq On : 01 Feb 2023 16:02
Operator : KP/MD
Sample : 01386-09
Misc : 6.58g/5.0mL/MSVOA_Y/SOIL
ALS Vial : 14 Sample Multiplier: 1

Instrument :
MSVOA_Y
ClientSampleId :
JPP-14-013123

Quant Method : Z:\voasrv\HPCHEM1\MSVOA_Y\methods\82Y011623S.M
Quant Title : SW846 8260

TIC Library : C:\Database\NIST0.L
TIC Integration Parameters: LSCINT.P

TIC Top Hit name	RT	EstConc	Units	Response	--Internal Standard--		
					#	RT	Resp Conc
