

Data Path : Z:\voasrv\HPCHEM1\MSVOA_Y\Data\VY020223\
 Data File : VY012453.D
 Acq On : 02 Feb 2023 13:38
 Operator : KP/MD
 Sample : VY0202SBL07
 Misc : 5.00g/5.0mL/MSVOA_Y/SOIL
 ALS Vial : 6 Sample Multiplier: 1

Instrument :
 MSVOA_Y
 ClientSampleId :
 VY0202SBL07

Integration Parameters: RTEINT.P

Integrator: RTE
 Smoothing : ON Filtering: 5
 Sampling : 1 Min Area: 3 % of largest Peak
 Start Thrs: 0.2 Max Peaks: 100
 Stop Thrs : 0 Peak Location: TOP

If leading or trailing edge < 100 prefer < Baseline drop else tangent >
 Peak separation: 5

Method : Z:\voasrv\HPCHEM1\MSVOA_Y\methods\82Y011623S.M
 Title : SW846 8260

Signal : TIC: VY012453.D\data.ms

peak #	R.T. min	first scan	max scan	last scan	PK TY	peak height	corr. area	corr. % max.	% of total
1	4.716	465	475	488	rBV2	12984	39647	5.88%	0.880%
2	4.930	498	510	522	rBV	5533	20378	3.02%	0.452%
3	5.753	636	645	657	rVB3	4203	13260	1.97%	0.294%
4	6.972	835	845	862	rBV	37043	110037	16.33%	2.442%
5	7.722	957	968	973	rBV	97527	229724	34.09%	5.098%
6	7.789	973	979	993	rVB	213603	480598	71.33%	10.666%
7	8.136	1023	1036	1049	rBV3	105866	309138	45.88%	6.861%
8	8.691	1116	1127	1141	rBV	304361	584371	86.73%	12.969%
9	10.179	1364	1371	1380	rBV	339637	572182	84.92%	12.699%
10	10.581	1431	1437	1445	rBV	42874	76362	11.33%	1.695%
11	10.947	1491	1497	1509	rBV	31572	55239	8.20%	1.226%
12	11.319	1552	1558	1565	rVB	14639	23970	3.56%	0.532%
13	11.490	1579	1586	1597	rBV	414634	673806	100.00%	14.954%
14	12.483	1742	1749	1760	rBV2	343533	605307	89.83%	13.434%
15	12.825	1799	1805	1815	rBV2	7091	11627	1.73%	0.258%
16	13.428	1897	1904	1911	rVB	424911	643006	95.43%	14.271%
17	13.965	1985	1992	2000	rVB2	22483	36908	5.48%	0.819%
18	15.318	2208	2214	2221	rBV2	12493	20253	3.01%	0.449%

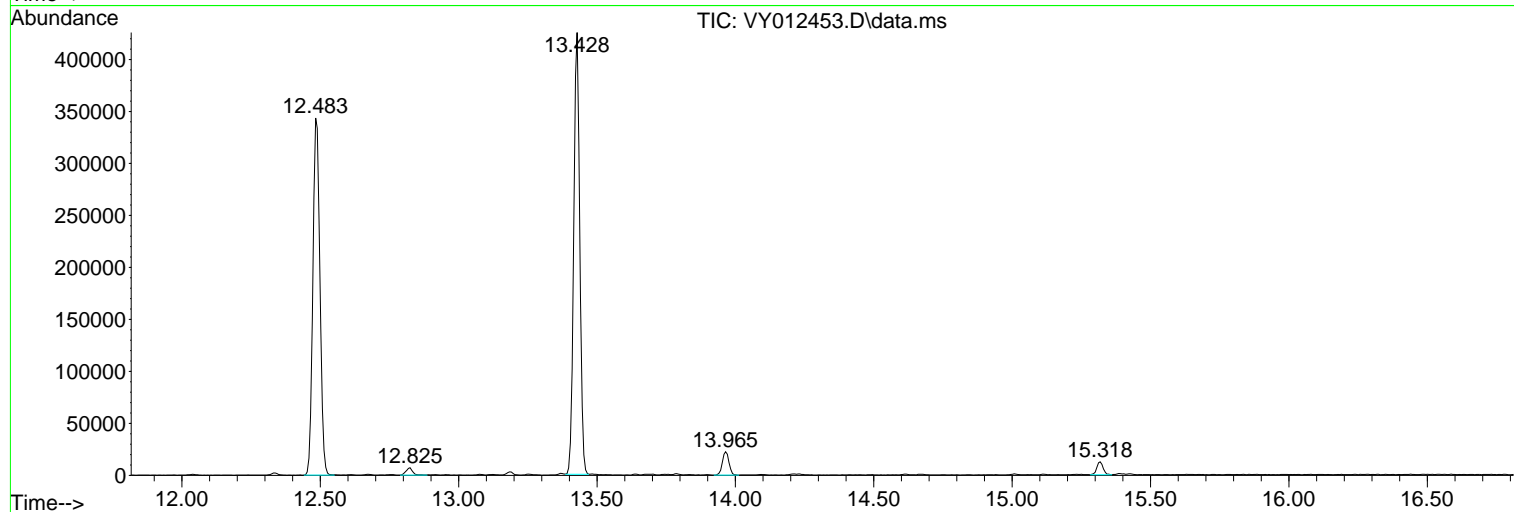
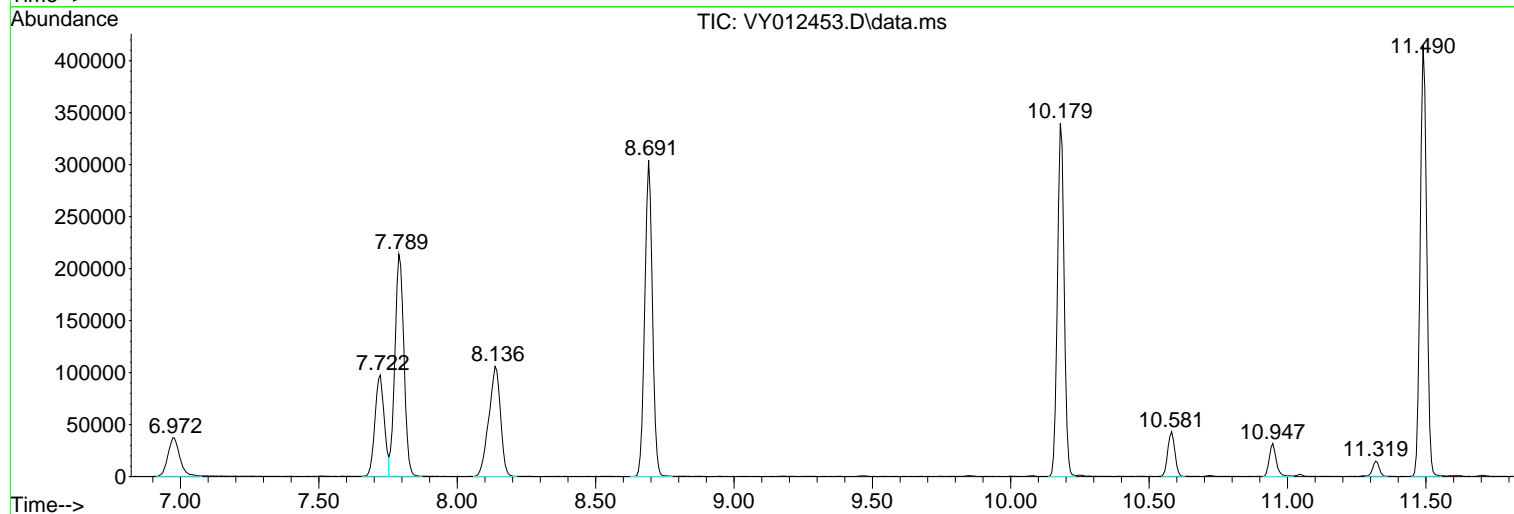
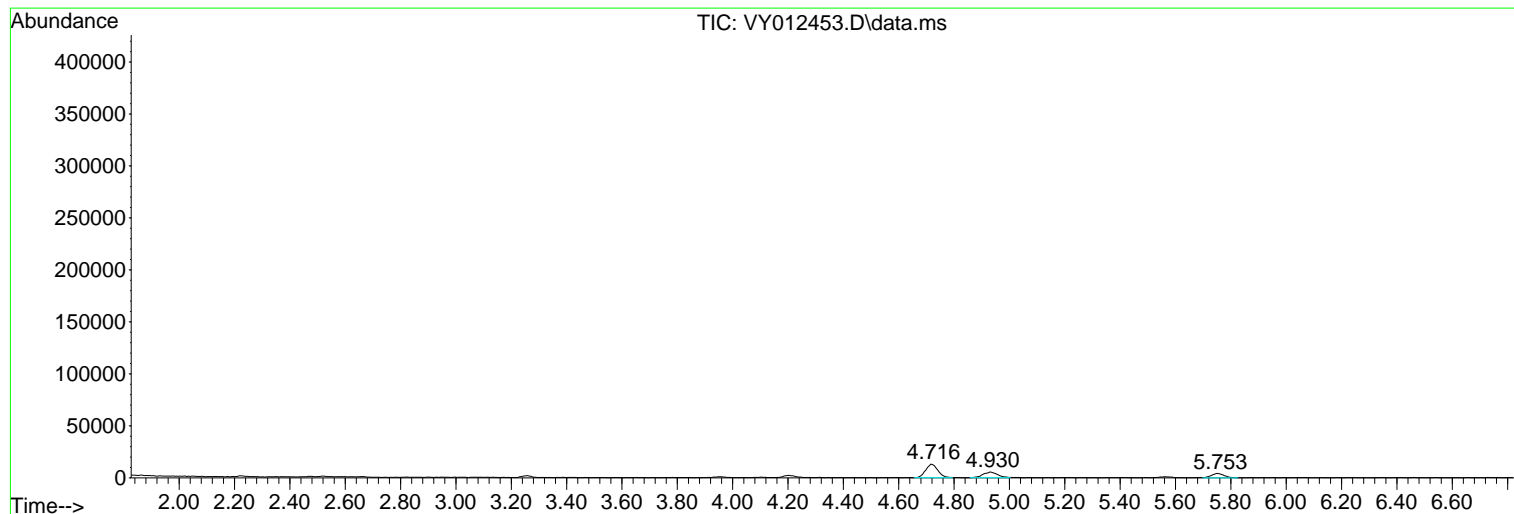
Sum of corrected areas: 4505813

Data Path : Z:\voasrv\HPCHEM1\MSVOA_Y\Data\VY020223\
Data File : VY012453.D
Acq On : 02 Feb 2023 13:38
Operator : KP/MD
Sample : VY0202SBL07
Misc : 5.00g/5.0mL/MSVOA_Y/SOIL
ALS Vial : 6 Sample Multiplier: 1

Instrument :
MSVOA_Y
ClientSampleId :
VY0202SBL07

Quant Method : Z:\voasrv\HPCHEM1\MSVOA_Y\methods\82Y011623S.M
Quant Title : SW846 8260

TIC Library : C:\Database\NIST20.L
TIC Integration Parameters: LSCINT.P



Library Search Compound Report

Data Path : Z:\voasrv\HPCHEM1\MSVOA_Y\Data\VY020223\
Data File : VY012453.D
Acq On : 02 Feb 2023 13:38
Operator : KP/MD
Sample : VY0202SBL07
Misc : 5.00g/5.0mL/MSVOA_Y/SOIL
ALS Vial : 6 Sample Multiplier: 1

Instrument :
MSVOA_Y
ClientSampleId :
VY0202SBL07

Quant Method : Z:\voasrv\HPCHEM1\MSVOA_Y\methods\82Y011623S.M
Quant Title : SW846 8260

TIC Library : C:\Database\NIST20.L
TIC Integration Parameters: LSCINT.P

No Library Search Compounds Detected

Data Path : Z:\voasrv\HPCHEM1\MSVOA_Y\Data\VY020223\
Data File : VY012453.D
Acq On : 02 Feb 2023 13:38
Operator : KP/MD
Sample : VY0202SBL07
Misc : 5.00g/5.0mL/MSVOA_Y/SOIL
ALS Vial : 6 Sample Multiplier: 1

Instrument :
MSVOA_Y
ClientSampleId :
VY0202SBL07

Quant Method : Z:\voasrv\HPCHEM1\MSVOA_Y\methods\82Y011623S.M
Quant Title : SW846 8260

TIC Library : C:\Database\NIST0.L
TIC Integration Parameters: LSCINT.P

TIC Top Hit name	RT	EstConc	Units	Response	#	RT	Resp	Conc
------------------	----	---------	-------	----------	---	----	------	------
