

Data Path : Z:\VOASRV\HPCHEM1\MSVOA Y\DATA\VY020320\
 Data File : VY001464.D
 Acq On : 03 Feb 2020 11:13
 Operator : SY/MD
 Sample : VY0203SBL01
 Misc : 5.00G/5ML/MSVOA Y/SOIL
 ALS Vial : 3 Sample Multiplier: 1

Instrument :
 MSVOA_Y
 ClientSampleId :
 VY0203SBL01

Integration Parameters: RTEINT.P

Integrator: RTE
 Smoothing : ON Filtering: 5
 Sampling : 1 Min Area: 3 % of largest Peak
 Start Thrs: 0.2 Max Peaks: 100
 Stop Thrs : 0 Peak Location: TOP

If leading or trailing edge < 100 prefer < Baseline drop else tangent >
 Peak separation: 5

Method : Z:\VOASRV\HPCHEM1\MSVOA_Y\METHODS\82Y012120S.M
 Title : SW846 8260

Signal : TIC

peak #	R.T. min	first scan	max scan	last scan	PK TY	peak height	corr. area	corr. % max.	% of total
1	4.749	482	494	509	rBV3	10576	35984	3.70%	0.653%
2	5.779	654	663	675	rBV5	3108	10005	1.03%	0.182%
3	7.010	850	865	875	rBV	24231	73777	7.58%	1.340%
4	7.748	975	986	991	rBV	130099	301725	31.00%	5.478%
5	7.815	991	997	1008	rVB	213514	485599	49.89%	8.817%
6	8.169	1042	1055	1067	rVB2	134826	323290	33.22%	5.870%
7	8.711	1136	1144	1155	rBV	364533	707250	72.66%	12.842%
8	10.193	1379	1387	1396	rBV	564451	973308	100.00%	17.672%
9	10.589	1446	1452	1460	rBV	50644	88984	9.14%	1.616%
10	10.961	1505	1513	1524	rBV	47512	80993	8.32%	1.471%
11	11.327	1568	1573	1583	rVB2	21406	35289	3.63%	0.641%
12	11.504	1593	1602	1613	rBV	514809	857732	88.13%	15.574%
13	12.491	1757	1764	1773	rBV2	435228	693235	71.22%	12.587%
14	13.436	1912	1919	1926	rVB	515312	812394	83.47%	14.751%
15	13.973	2002	2007	2015	rVB	8370	14287	1.47%	0.259%
16	15.320	2220	2228	2234	rVB2	8303	13676	1.41%	0.248%

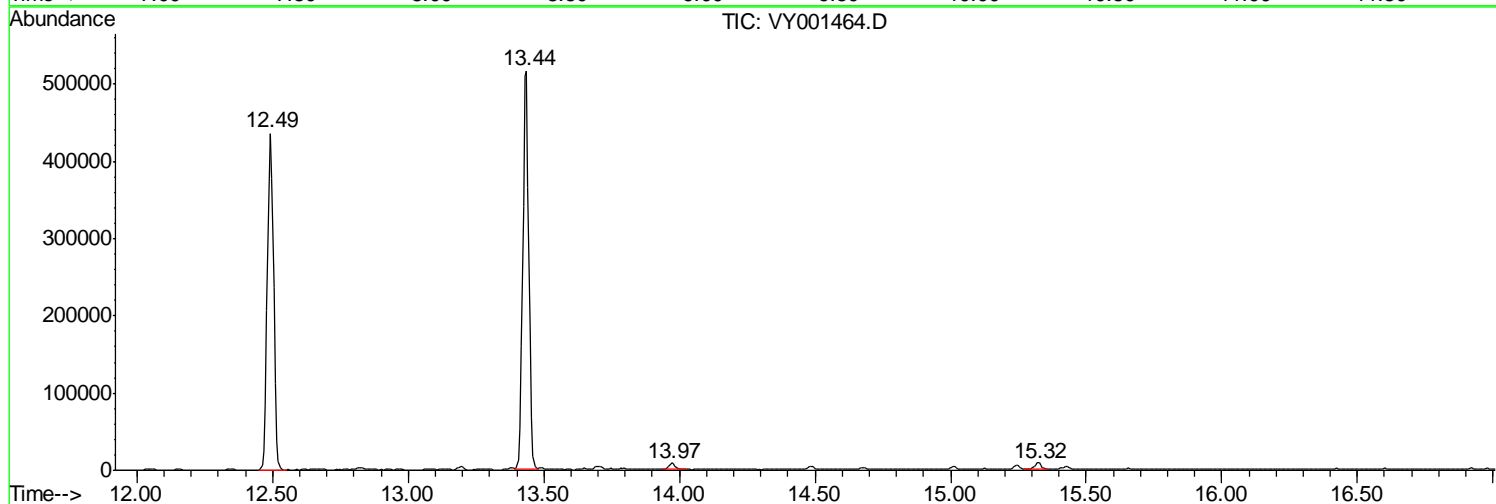
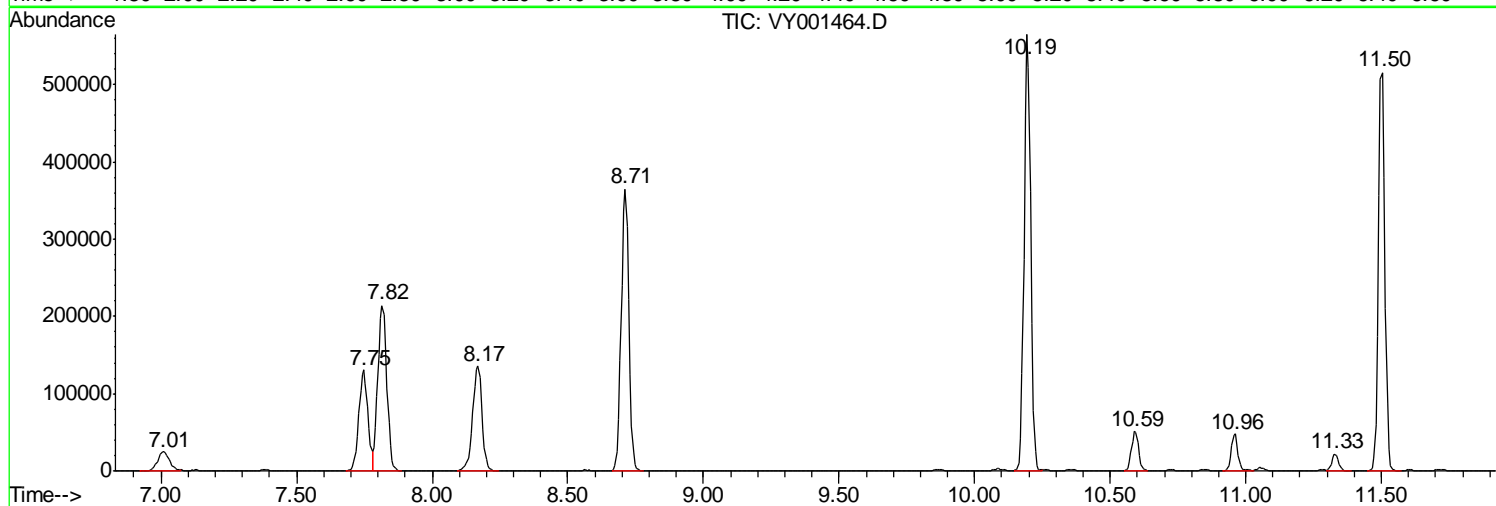
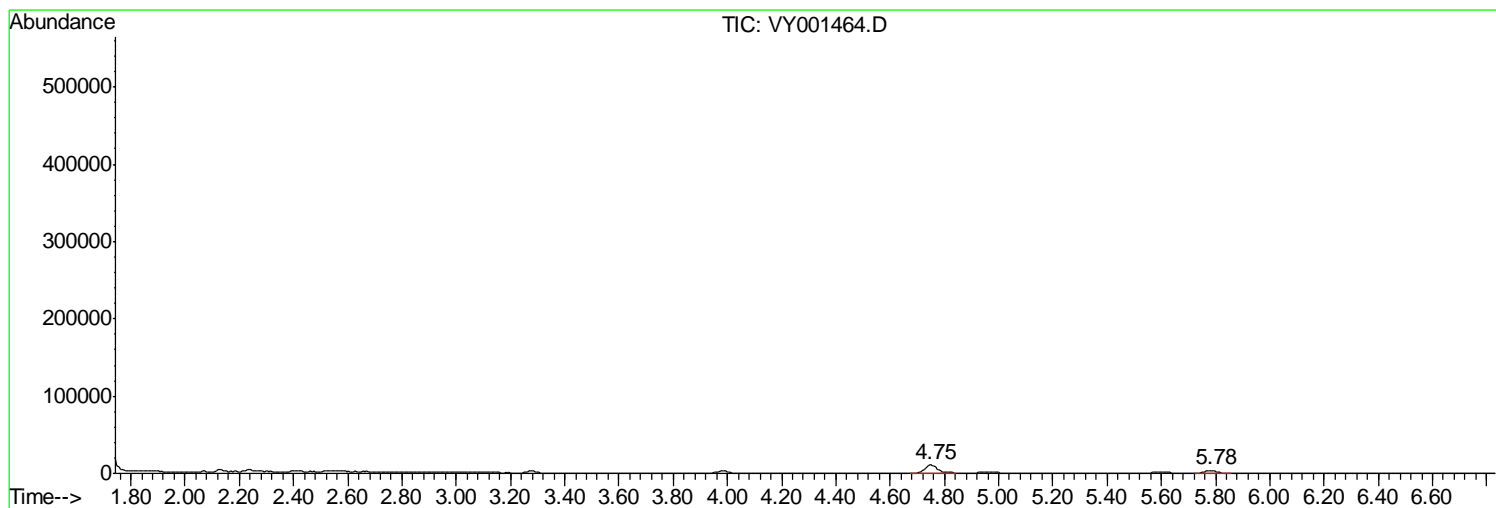
Sum of corrected areas: 5507528

Data Path : Z:\VOASRV\HPCHEM1\MSVOA Y\DATA\VY020320\
Data File : VY001464.D
Acq On : 03 Feb 2020 11:13
Operator : SY/MD
Sample : VY0203SBL01
Misc : 5.00G/5ML/MSVOA Y/SOIL
ALS Vial : 3 Sample Multiplier: 1

Instrument :
MSVOA_Y
ClientSampleId :
VY0203SBL01

Quant Method : Z:\VOASRV\HPCHEM1\MSVOA_Y\METHODS\82Y012120S.M
Quant Title : SW846 8260

TIC Library : C:\DATABASE\NIST11.L
TIC Integration Parameters: LSCINT.P



Data Path : Z:\VOASRV\HPCHEM1\MSVOA_Y\DATA\VY020320\
Data File : VY001464.D
Acq On : 03 Feb 2020 11:13
Operator : SY/MD
Sample : VY0203SBL01
Misc : 5.00G/5ML/MSVOA_Y/SOIL
ALS Vial : 3 Sample Multiplier: 1

Instrument :
MSVOA_Y
ClientSampleId :
VY0203SBL01

Quant Method : Z:\VOASRV\HPCHEM1\MSVOA_Y\METHODS\82Y012120S.M
Quant Title : SW846 8260

TIC Library : C:\DATABASE\NIST11.L
TIC Integration Parameters: LSCINT.P

No Library Search Compounds Detected

Data Path : Z:\VOASRV\HPCHEM1\MSVOA_Y\DATA\VY020320\
Data File : VY001464.D
Acq On : 03 Feb 2020 11:13
Operator : SY/MD
Sample : VY0203SBL01
Misc : 5.00G/5ML/MSVOA_Y/SOIL
ALS Vial : 3 Sample Multiplier: 1

Instrument :
MSVOA_Y
ClientSampleId :
VY0203SBL01

Quant Method : Z:\VOASRV\HPCHEM1\MSVOA_Y\METHODS\82Y012120S.M
Quant Title : SW846 8260

TIC Library : C:\DATABASE\NIST11.L
TIC Integration Parameters: LSCINT.P

TIC Top Hit name	RT	EstConc	Units	Response	--Internal Standard--			
					#	RT	Resp	Conc
