

Data Path : Z:\voasrv\HPCHEM1\MSVOA_Y\Data\VY020425\
 Data File : VY021052.D
 Acq On : 04 Feb 2025 12:42
 Operator : SY/MD
 Sample : Q1207-13
 Misc : 5.02g/5.0mL/MSVOA_Y/SOIL/B
 ALS Vial : 8 Sample Multiplier: 1

Instrument :
 MSVOA_Y
ClientSampleId :
 JPP-16.2-012725

Quant Time: Feb 05 00:45:32 2025
 Quant Method : Z:\voasrv\HPCHEM1\MSVOA_Y\methods\82Y020325S.M
 Quant Title : SW846 8260
 QLast Update : Mon Feb 03 13:08:38 2025
 Response via : Initial Calibration

Compound	R.T.	QIon	Response	Conc	Units	Dev(Min)

Internal Standards						
1) Pentafluorobenzene	7.707	168	164435	50.000	ug/l	0.00
34) 1,4-Difluorobenzene	8.616	114	308184	50.000	ug/l	0.00
63) Chlorobenzene-d5	11.420	117	283566	50.000	ug/l	0.00
72) 1,4-Dichlorobenzene-d4	13.346	152	116417	50.000	ug/l	0.00

System Monitoring Compounds						
33) 1,2-Dichloroethane-d4	8.061	65	99123	58.835	ug/l	0.00
Spiked Amount	50.000	Range	50 - 163	Recovery	=	117.660%
35) Dibromofluoromethane	7.634	113	101293	51.286	ug/l	0.00
Spiked Amount	50.000	Range	54 - 147	Recovery	=	102.580%
50) Toluene-d8	10.109	98	376112	50.021	ug/l	0.00
Spiked Amount	50.000	Range	58 - 134	Recovery	=	100.040%
62) 4-Bromofluorobenzene	12.408	95	120696	49.134	ug/l	0.00
Spiked Amount	50.000	Range	30 - 143	Recovery	=	98.260%

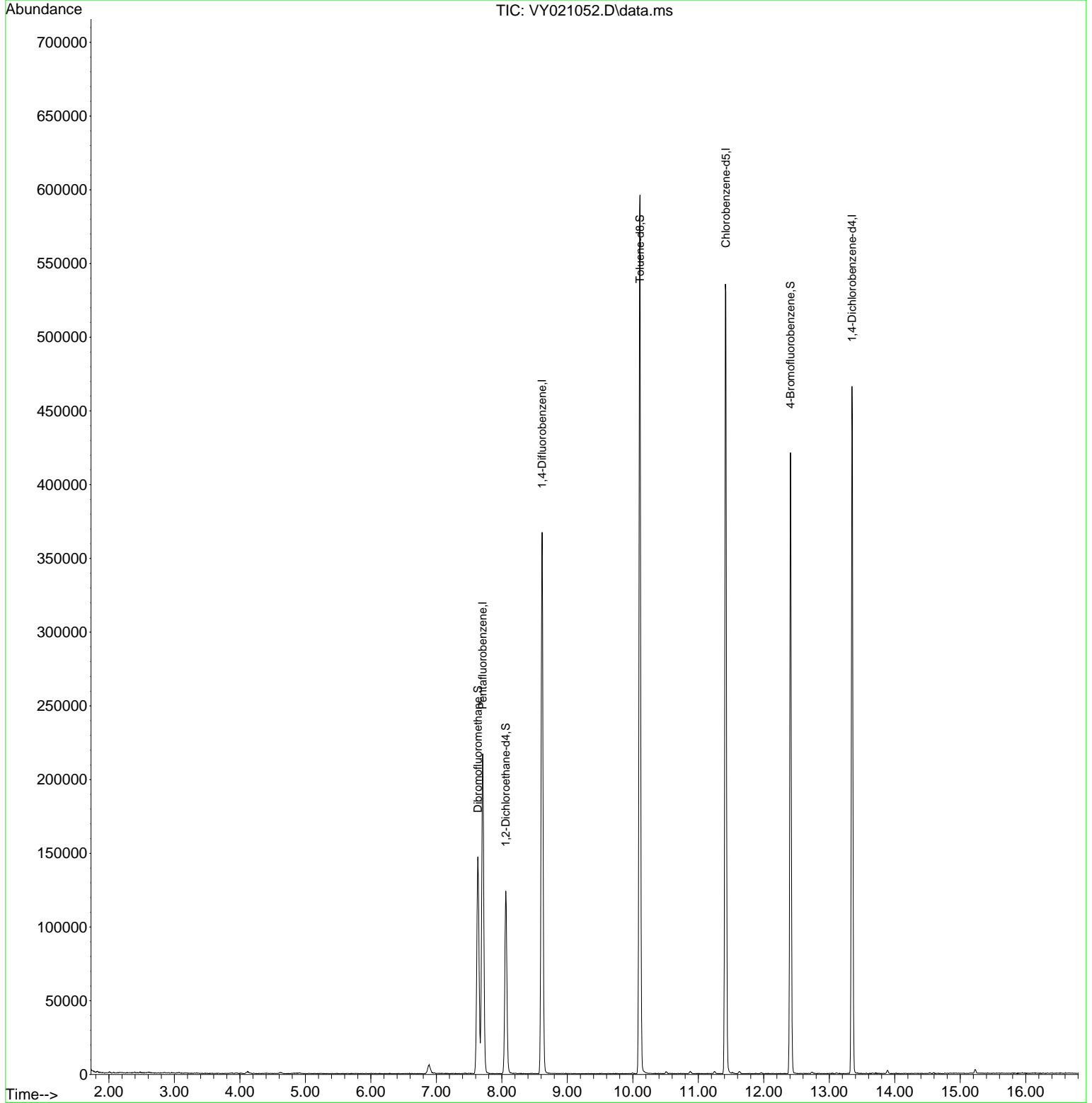
Target Compounds Qvalue

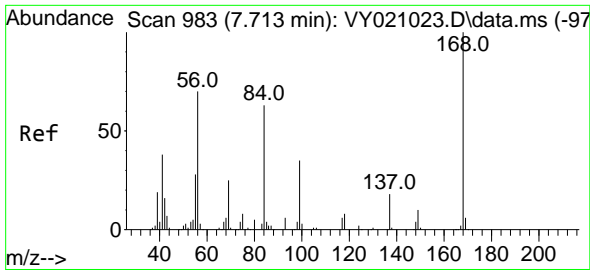
(#) = qualifier out of range (m) = manual integration (+) = signals summed

Data Path : Z:\voasrv\HPCHEM1\MSVOA_Y\Data\VY020425\
 Data File : VY021052.D
 Acq On : 04 Feb 2025 12:42
 Operator : SY/MD
 Sample : Q1207-13
 Misc : 5.02g/5.0mL/MSVOA_Y/SOIL/B
 ALS Vial : 8 Sample Multiplier: 1

Instrument :
 MSVOA_Y
 ClientSampleId :
 JPP-16.2-012725

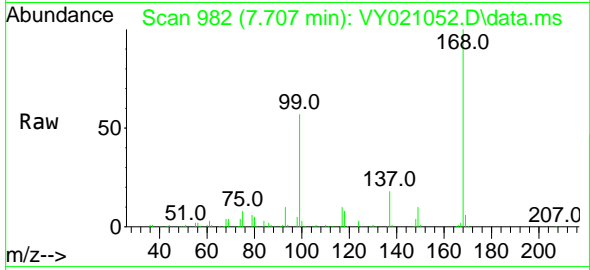
Quant Time: Feb 05 00:45:32 2025
 Quant Method : Z:\voasrv\HPCHEM1\MSVOA_Y\methods\82Y020325S.M
 Quant Title : SW846 8260
 QLast Update : Mon Feb 03 13:08:38 2025
 Response via : Initial Calibration



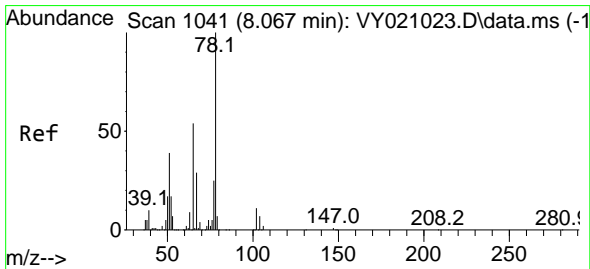
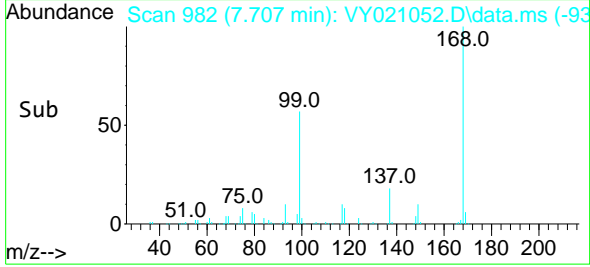
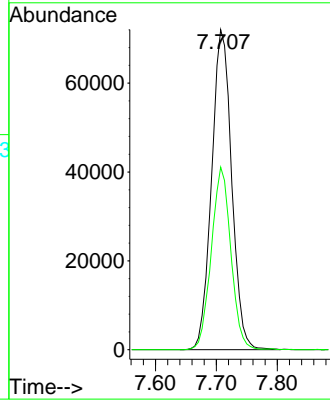


#1
 Pentafluorobenzene
 Concen: 50.000 ug/l
 RT: 7.707 min Scan# 91
 Delta R.T. -0.006 min
 Lab File: VY021052.D
 Acq: 04 Feb 2025 12:42

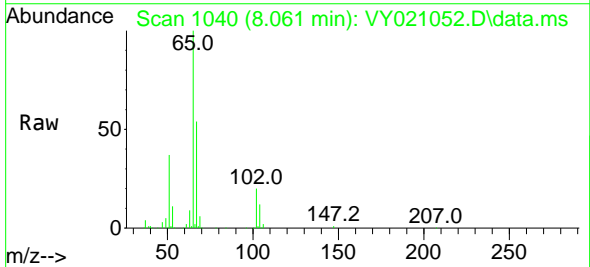
Instrument :
 MSVOA_Y
 ClientSampleId :
 JPP-16.2-012725



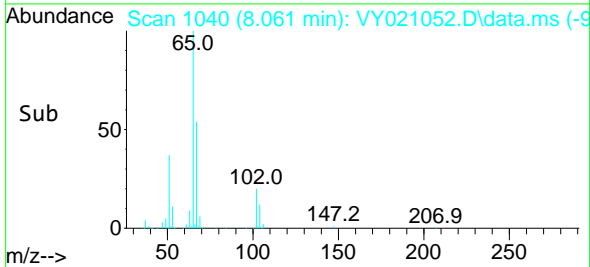
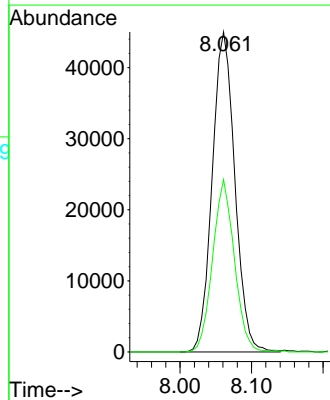
Tgt Ion:168 Resp: 164435
 Ion Ratio Lower Upper
 168 100
 99 57.0 44.2 66.4

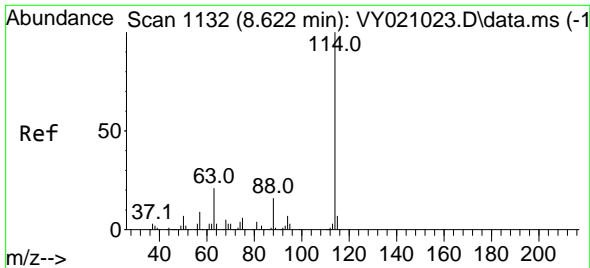


#33
 1,2-Dichloroethane-d4
 Concen: 58.835 ug/l
 RT: 8.061 min Scan# 1040
 Delta R.T. -0.006 min
 Lab File: VY021052.D
 Acq: 04 Feb 2025 12:42



Tgt Ion: 65 Resp: 99123
 Ion Ratio Lower Upper
 65 100
 67 51.6 0.0 109.0

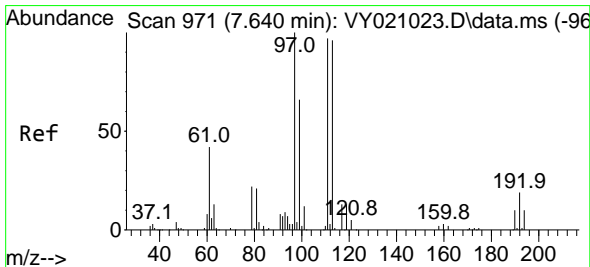
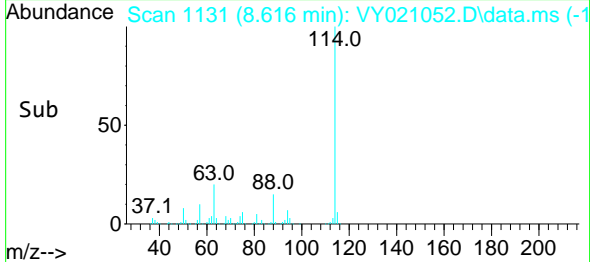
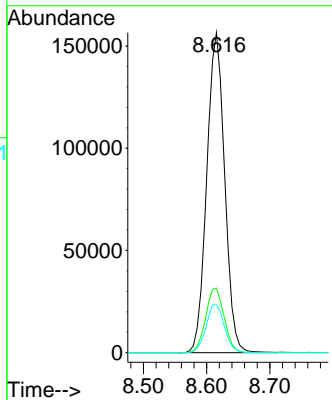
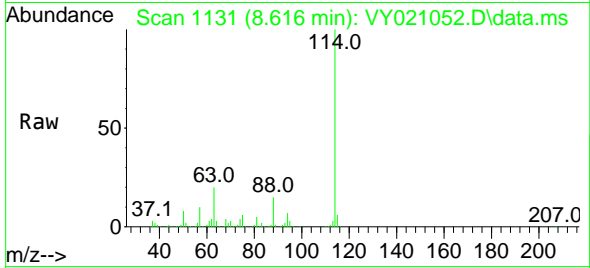




#34
 1,4-Difluorobenzene
 Concen: 50.000 ug/l
 RT: 8.616 min Scan# 1131
 Delta R.T. -0.006 min
 Lab File: VY021052.D
 Acq: 04 Feb 2025 12:42

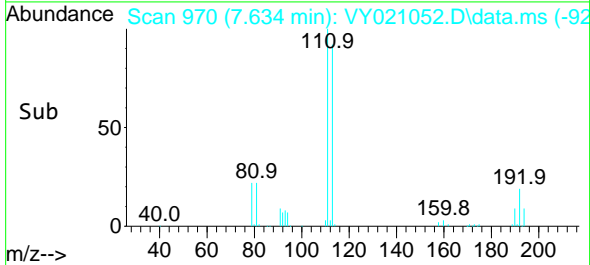
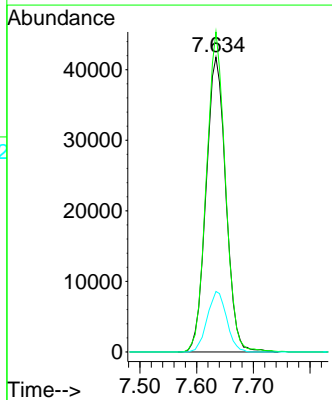
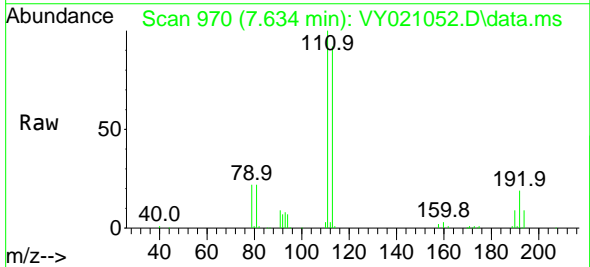
Instrument : MSVOA_Y
 ClientSampleId : JPP-16.2-012725

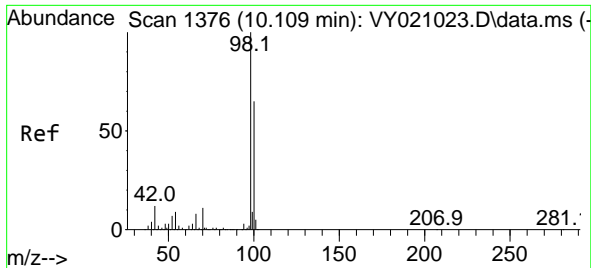
Tgt Ion	Resp	Lower	Upper
114	100		
63	20.2	0.0	37.4
88	14.9	0.0	29.0



#35
 Dibromofluoromethane
 Concen: 51.286 ug/l
 RT: 7.634 min Scan# 970
 Delta R.T. -0.006 min
 Lab File: VY021052.D
 Acq: 04 Feb 2025 12:42

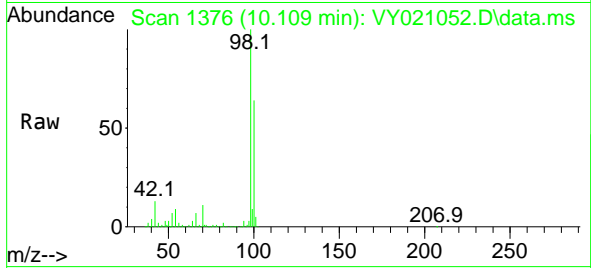
Tgt Ion	Resp	Lower	Upper
113	100		
111	104.1	83.8	125.6
192	20.1	14.5	21.7



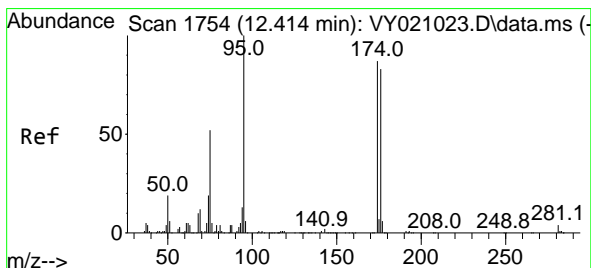
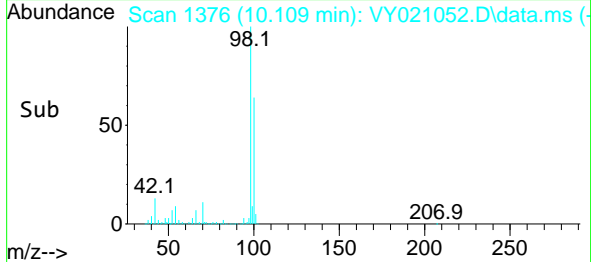
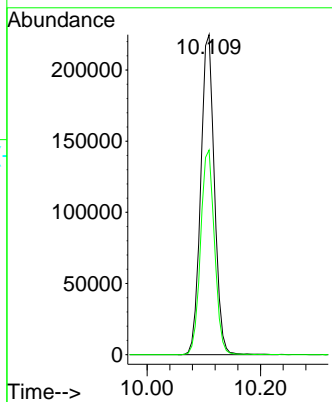


#50
 Toluene-d8
 Concen: 50.021 ug/l
 RT: 10.109 min Scan# 1376
 Delta R.T. -0.000 min
 Lab File: VY021052.D
 Acq: 04 Feb 2025 12:42

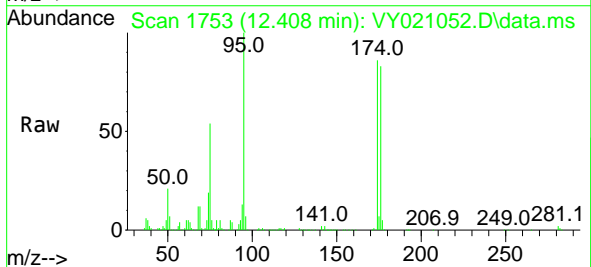
Instrument : MSVOA_Y
 ClientSampleId : JPP-16.2-012725



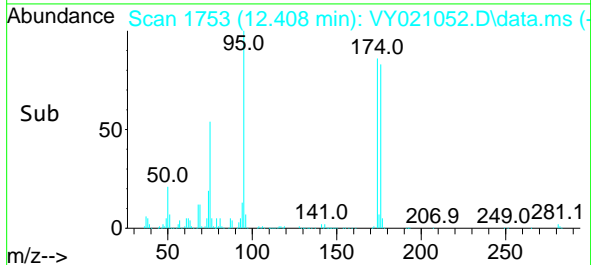
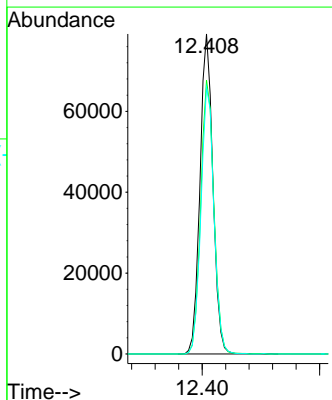
Tgt Ion: 98 Resp: 376112
 Ion Ratio Lower Upper
 98 100
 100 65.1 52.3 78.5

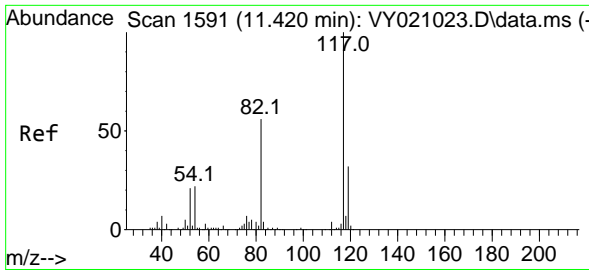


#62
 4-Bromofluorobenzene
 Concen: 49.134 ug/l
 RT: 12.408 min Scan# 1753
 Delta R.T. -0.006 min
 Lab File: VY021052.D
 Acq: 04 Feb 2025 12:42



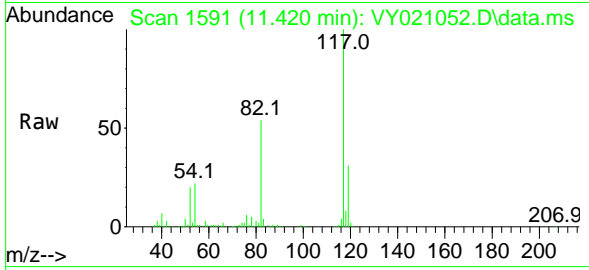
Tgt Ion: 95 Resp: 120696
 Ion Ratio Lower Upper
 95 100
 174 87.1 0.0 160.0
 176 84.1 0.0 151.8





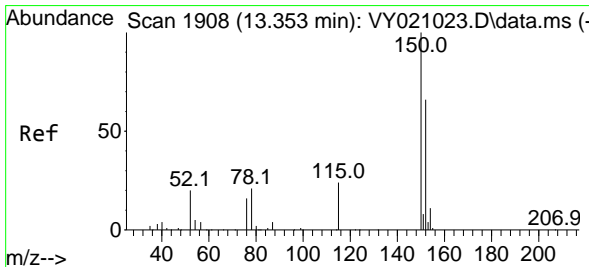
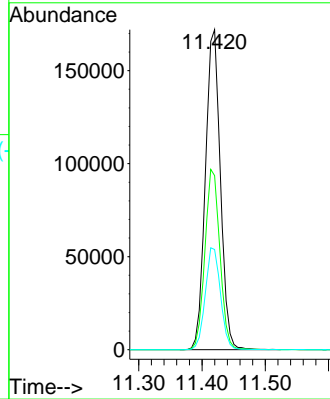
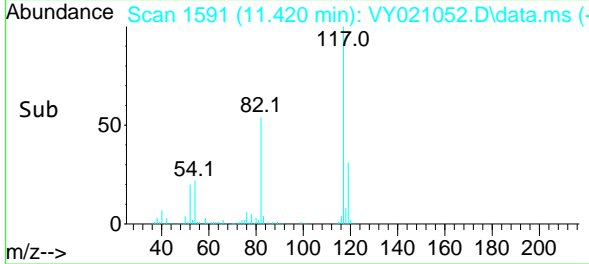
#63
 Chlorobenzene-d5
 Concen: 50.000 ug/l
 RT: 11.420 min Scan# 111
 Delta R.T. -0.000 min
 Lab File: VY021052.D
 Acq: 04 Feb 2025 12:42

Instrument : MSVOA_Y
 ClientSampleId : JPP-16.2-012725

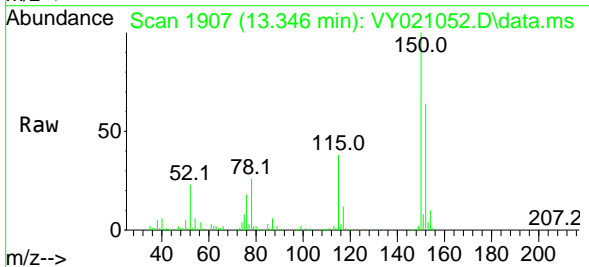


Tgt Ion:117 Resp: 283566

Ion	Ratio	Lower	Upper
117	100		
82	54.4	43.8	65.8
119	31.3	26.5	39.7



#72
 1,4-Dichlorobenzene-d4
 Concen: 50.000 ug/l
 RT: 13.346 min Scan# 1907
 Delta R.T. -0.006 min
 Lab File: VY021052.D
 Acq: 04 Feb 2025 12:42



Tgt Ion:152 Resp: 116417

Ion	Ratio	Lower	Upper
152	100		
115	57.2	30.0	90.0
150	156.7	0.0	344.6

