

Data Path : Z:\voasrv\HPCHEM1\MSVOA\_Y\Data\VY020425\  
 Data File : VY021054.D  
 Acq On : 04 Feb 2025 13:29  
 Operator : SY/MD  
 Sample : Q1215-01  
 Misc : 5.08g/5.0mL/MSVOA\_Y/SOIL/B  
 ALS Vial : 10 Sample Multiplier: 1

Instrument :  
 MSVOA\_Y  
 ClientSampleId :  
 JPP-29.1-012825

Quant Time: Feb 05 00:46:09 2025  
 Quant Method : Z:\voasrv\HPCHEM1\MSVOA\_Y\methods\82Y020325S.M  
 Quant Title : SW846 8260  
 QLast Update : Mon Feb 03 13:08:38 2025  
 Response via : Initial Calibration

Compound	R.T.	QIon	Response	Conc	Units	Dev(Min)
-----						
Internal Standards						
1) Pentafluorobenzene	7.713	168	989	50.000	ug/l	0.00
34) 1,4-Difluorobenzene	8.616	114	1789	50.000	ug/l	0.00
63) Chlorobenzene-d5	11.420	117	818	50.000	ug/l	# 0.00
72) 1,4-Dichlorobenzene-d4	13.347	152	358	50.000	ug/l	# 0.00

System Monitoring Compounds						
33) 1,2-Dichloroethane-d4	8.061	65	1053	103.917	ug/l	0.00
Spiked Amount	50.000	Range	50 - 163	Recovery	=	207.840%#
35) Dibromofluoromethane	7.634	113	872	76.057	ug/l	0.00
Spiked Amount	50.000	Range	54 - 147	Recovery	=	152.120%#
50) Toluene-d8	10.109	98	1608	36.840	ug/l	0.00
Spiked Amount	50.000	Range	58 - 134	Recovery	=	73.680%
62) 4-Bromofluorobenzene	12.414	95	200	14.026	ug/l	0.00
Spiked Amount	50.000	Range	30 - 143	Recovery	=	28.060%#

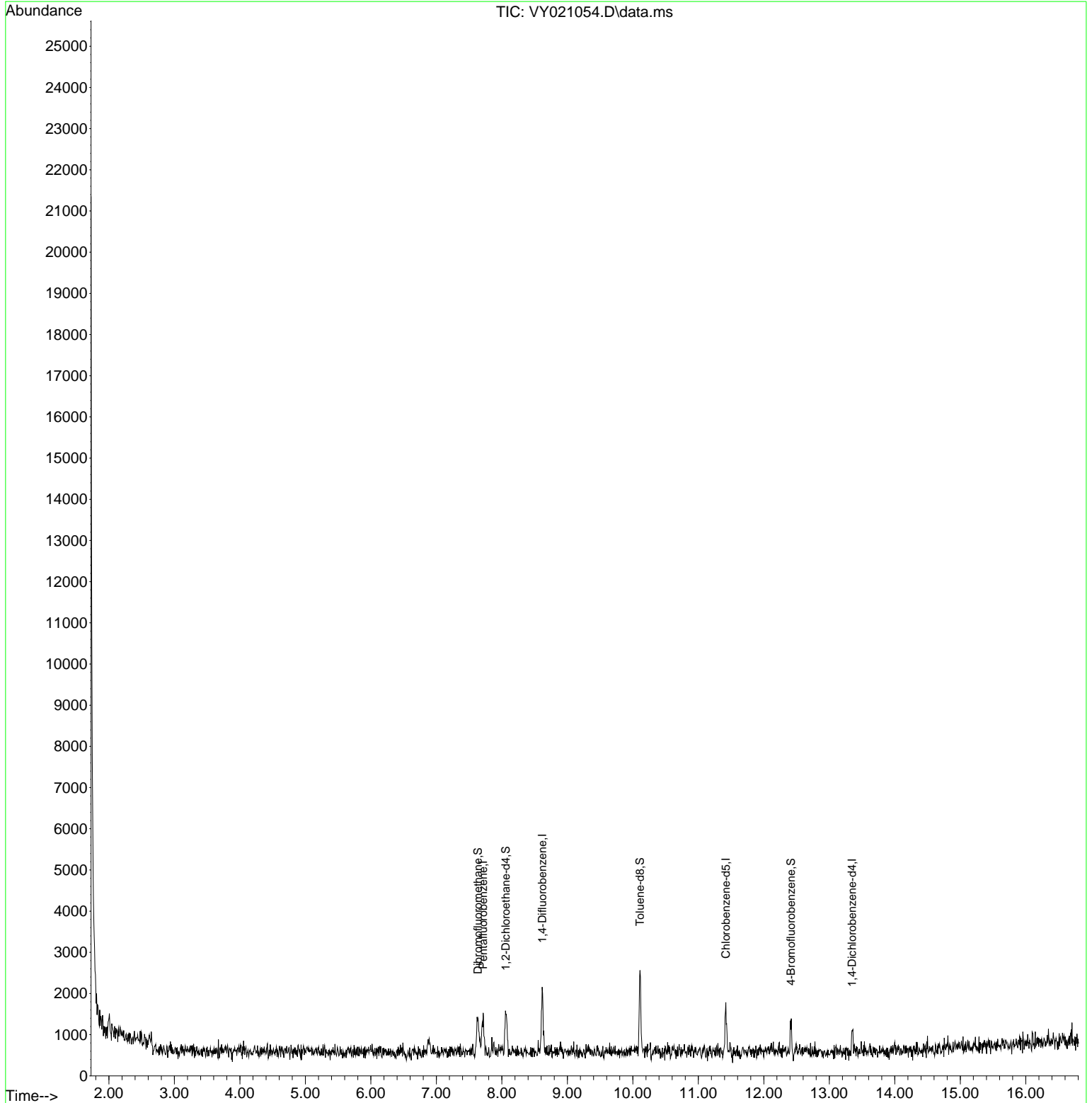
Target Compounds	Qvalue
-----	

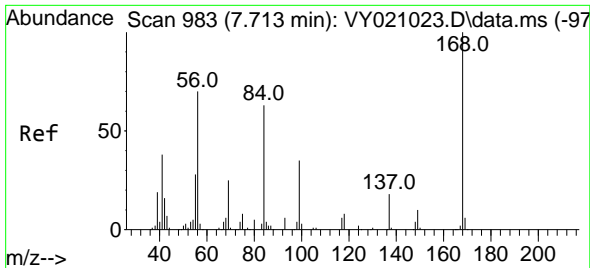
(#) = qualifier out of range (m) = manual integration (+) = signals summed

Data Path : Z:\voasrv\HPCHEM1\MSVOA\_Y\Data\VY020425\  
Data File : VY021054.D  
Acq On : 04 Feb 2025 13:29  
Operator : SY/MD  
Sample : Q1215-01  
Misc : 5.08g/5.0mL/MSVOA\_Y/SOIL/B  
ALS Vial : 10 Sample Multiplier: 1

Instrument :  
MSVOA\_Y  
ClientSampleId :  
JPP-29.1-012825

Quant Time: Feb 05 00:46:09 2025  
Quant Method : Z:\voasrv\HPCHEM1\MSVOA\_Y\methods\82Y020325S.M  
Quant Title : SW846 8260  
QLast Update : Mon Feb 03 13:08:38 2025  
Response via : Initial Calibration

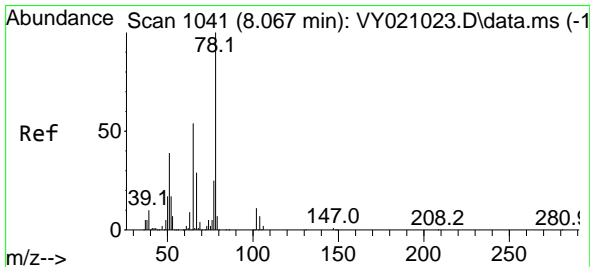
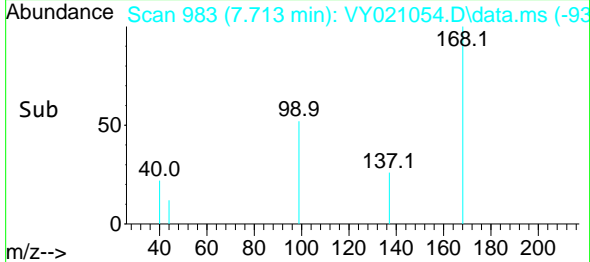
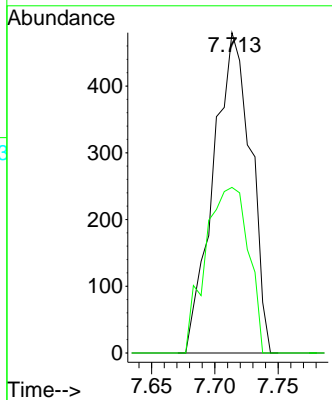
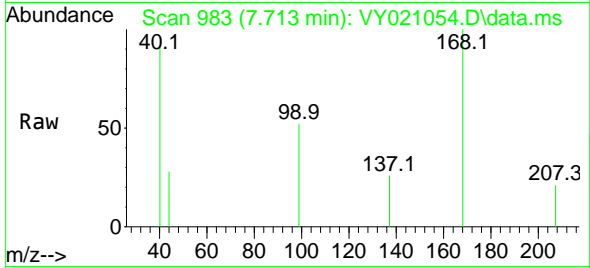




#1  
 Pentafluorobenzene  
 Concen: 50.000 ug/l  
 RT: 7.713 min Scan# 91  
 Delta R.T. 0.000 min  
 Lab File: VY021054.D  
 Acq: 04 Feb 2025 13:29

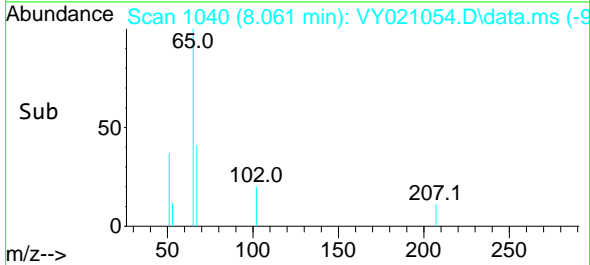
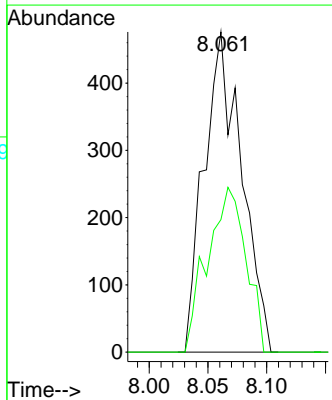
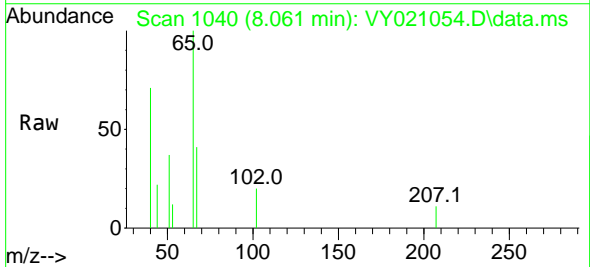
Instrument : MSVOA\_Y  
 ClientSampleId : JPP-29.1-012825

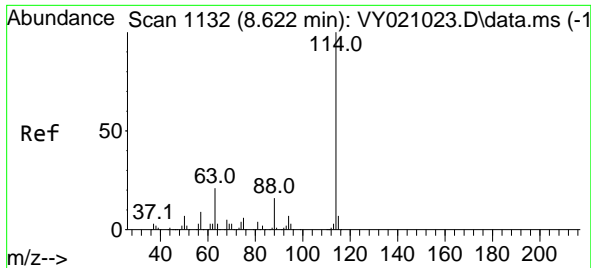
Tgt Ion:168 Resp: 989  
 Ion Ratio Lower Upper  
 168 100  
 99 51.7 44.2 66.4



#33  
 1,2-Dichloroethane-d4  
 Concen: 103.917 ug/l  
 RT: 8.061 min Scan# 1040  
 Delta R.T. -0.006 min  
 Lab File: VY021054.D  
 Acq: 04 Feb 2025 13:29

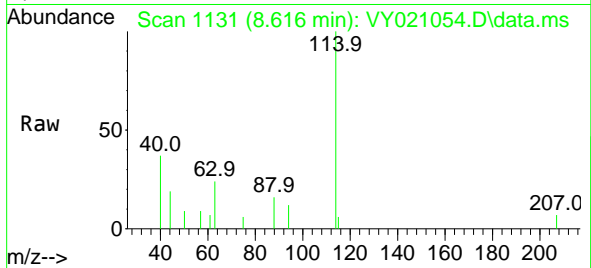
Tgt Ion: 65 Resp: 1053  
 Ion Ratio Lower Upper  
 65 100  
 67 53.1 0.0 109.0





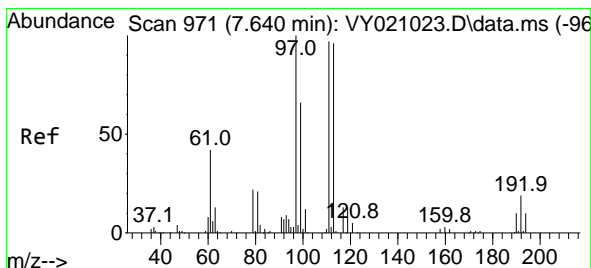
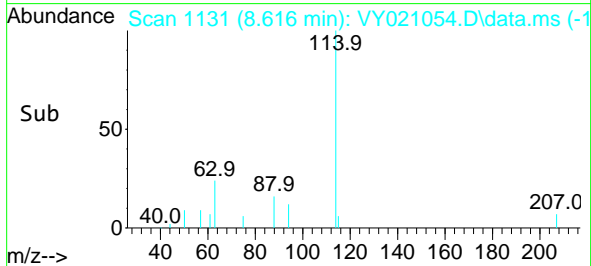
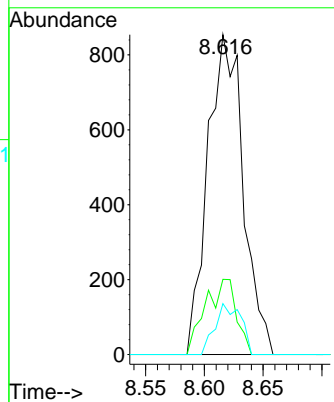
#34  
 1,4-Difluorobenzene  
 Concen: 50.000 ug/l  
 RT: 8.616 min Scan# 1131  
 Delta R.T. -0.006 min  
 Lab File: VY021054.D  
 Acq: 04 Feb 2025 13:29

Instrument : MSVOA\_Y  
 ClientSampleId : JPP-29.1-012825



Tgt Ion:114 Resp: 1789

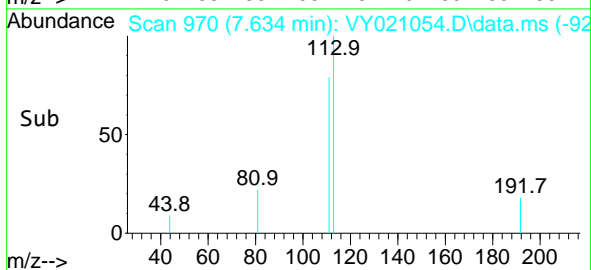
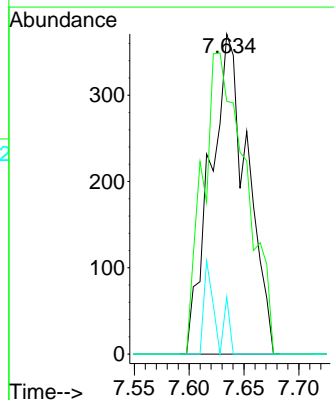
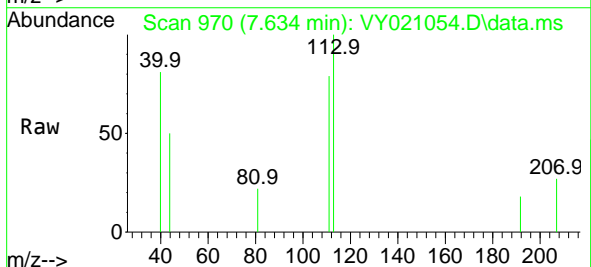
Ion	Ratio	Lower	Upper
114	100		
63	23.5	0.0	37.4
88	15.9	0.0	29.0

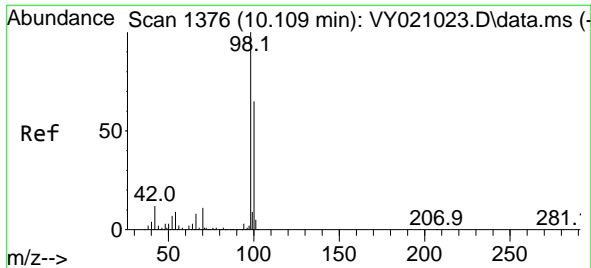


#35  
 Dibromofluoromethane  
 Concen: 76.057 ug/l  
 RT: 7.634 min Scan# 970  
 Delta R.T. -0.006 min  
 Lab File: VY021054.D  
 Acq: 04 Feb 2025 13:29

Tgt Ion:113 Resp: 872

Ion	Ratio	Lower	Upper
113	100		
111	109.3	83.8	125.6
192	6.9	14.5	21.7#

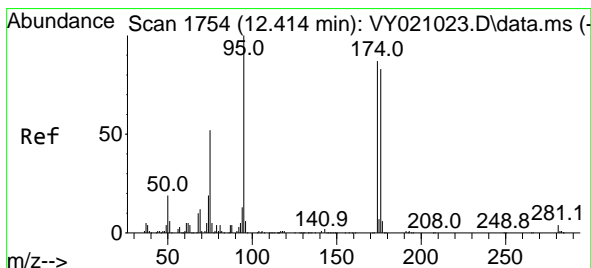
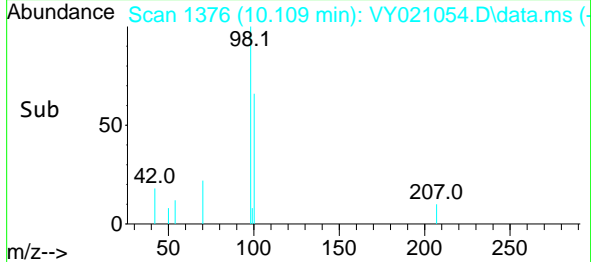
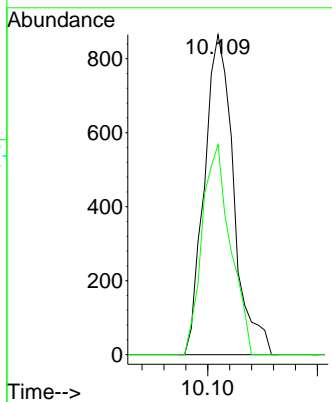
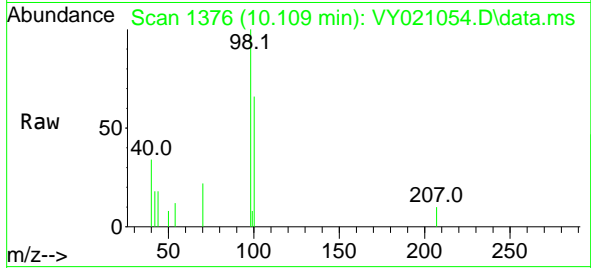




#50  
 Toluene-d8  
 Concen: 36.840 ug/l  
 RT: 10.109 min Scan# 11  
 Delta R.T. -0.000 min  
 Lab File: VY021054.D  
 Acq: 04 Feb 2025 13:29

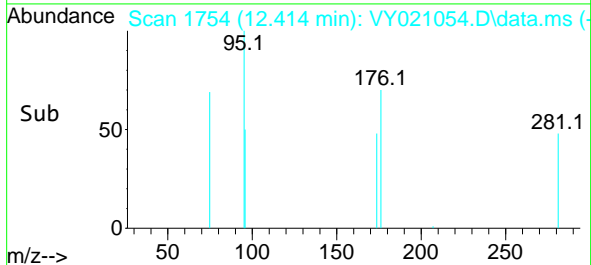
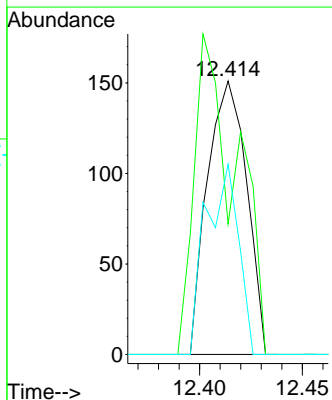
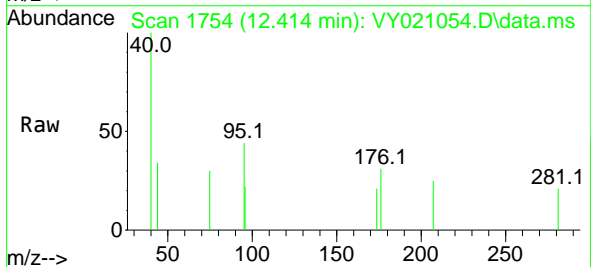
Instrument :  
 MSVOA\_Y  
 ClientSampleId :  
 JPP-29.1-012825

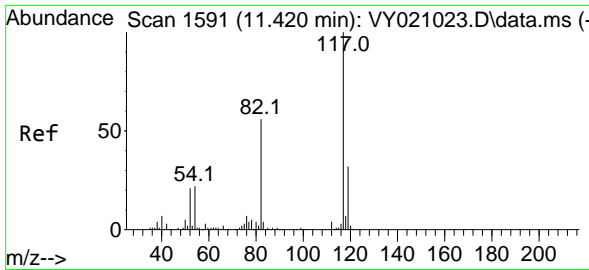
Tgt Ion: 98 Resp: 1608  
 Ion Ratio Lower Upper  
 98 100  
 100 63.1 52.3 78.5



#62  
 4-Bromofluorobenzene  
 Concen: 14.026 ug/l  
 RT: 12.414 min Scan# 1754  
 Delta R.T. -0.000 min  
 Lab File: VY021054.D  
 Acq: 04 Feb 2025 13:29

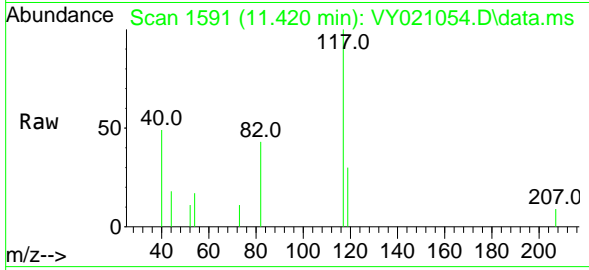
Tgt Ion: 95 Resp: 200  
 Ion Ratio Lower Upper  
 95 100  
 174 124.5 0.0 160.0  
 176 58.0 0.0 151.8





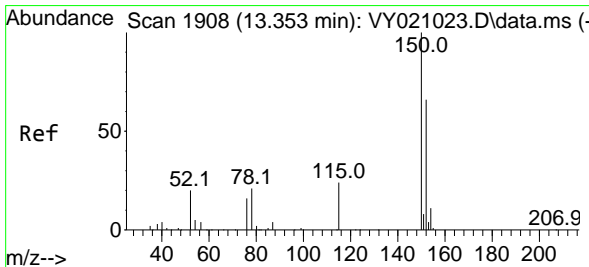
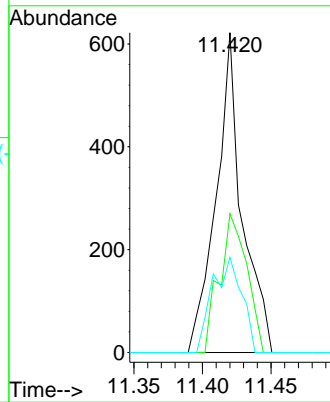
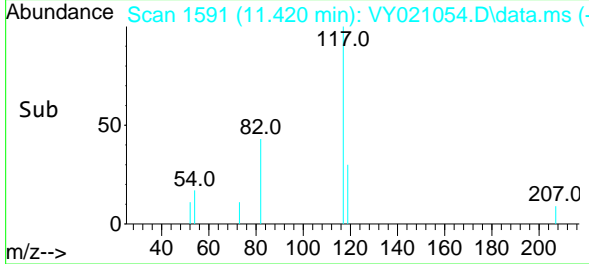
#63  
 Chlorobenzene-d5  
 Concen: 50.000 ug/l  
 RT: 11.420 min Scan# 1111  
 Delta R.T. -0.000 min  
 Lab File: VY021054.D  
 Acq: 04 Feb 2025 13:29

Instrument : MSVOA\_Y  
 ClientSampleId : JPP-29.1-012825

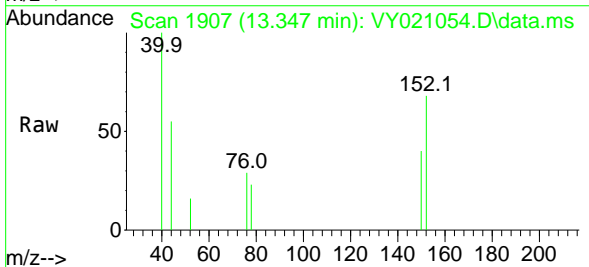


Tgt Ion:117 Resp: 818

Ion	Ratio	Lower	Upper
117	100		
82	43.4	43.8	65.8#
119	29.7	26.5	39.7



#72  
 1,4-Dichlorobenzene-d4  
 Concen: 50.000 ug/l  
 RT: 13.347 min Scan# 1907  
 Delta R.T. -0.006 min  
 Lab File: VY021054.D  
 Acq: 04 Feb 2025 13:29



Tgt Ion:152 Resp: 358

Ion	Ratio	Lower	Upper
152	100		
115	5.6	30.0	90.0#
150	102.2	0.0	344.6

