

Data Path : Z:\voasrv\HPCHEM1\MSVOA_Y\Data\VY020624\
 Data File : VY017272.D
 Acq On : 06 Feb 2024 18:11
 Operator : SY/MD
 Sample : P1355-01
 Misc : 5.67g/5.0mL/MSVOA_Y/SOIL/A
 ALS Vial : 23 Sample Multiplier: 1

Instrument :
 MSVOA_Y
 ClientSampleId :
 VNJ-214

Quant Time: Feb 07 00:11:01 2024
 Quant Method : Z:\voasrv\HPCHEM1\MSVOA_Y\methods\82Y020124S.M
 Quant Title : SW846 8260
 QLast Update : Fri Feb 02 00:56:04 2024
 Response via : Initial Calibration

Compound	R.T.	QIon	Response	Conc	Units	Dev(Min)

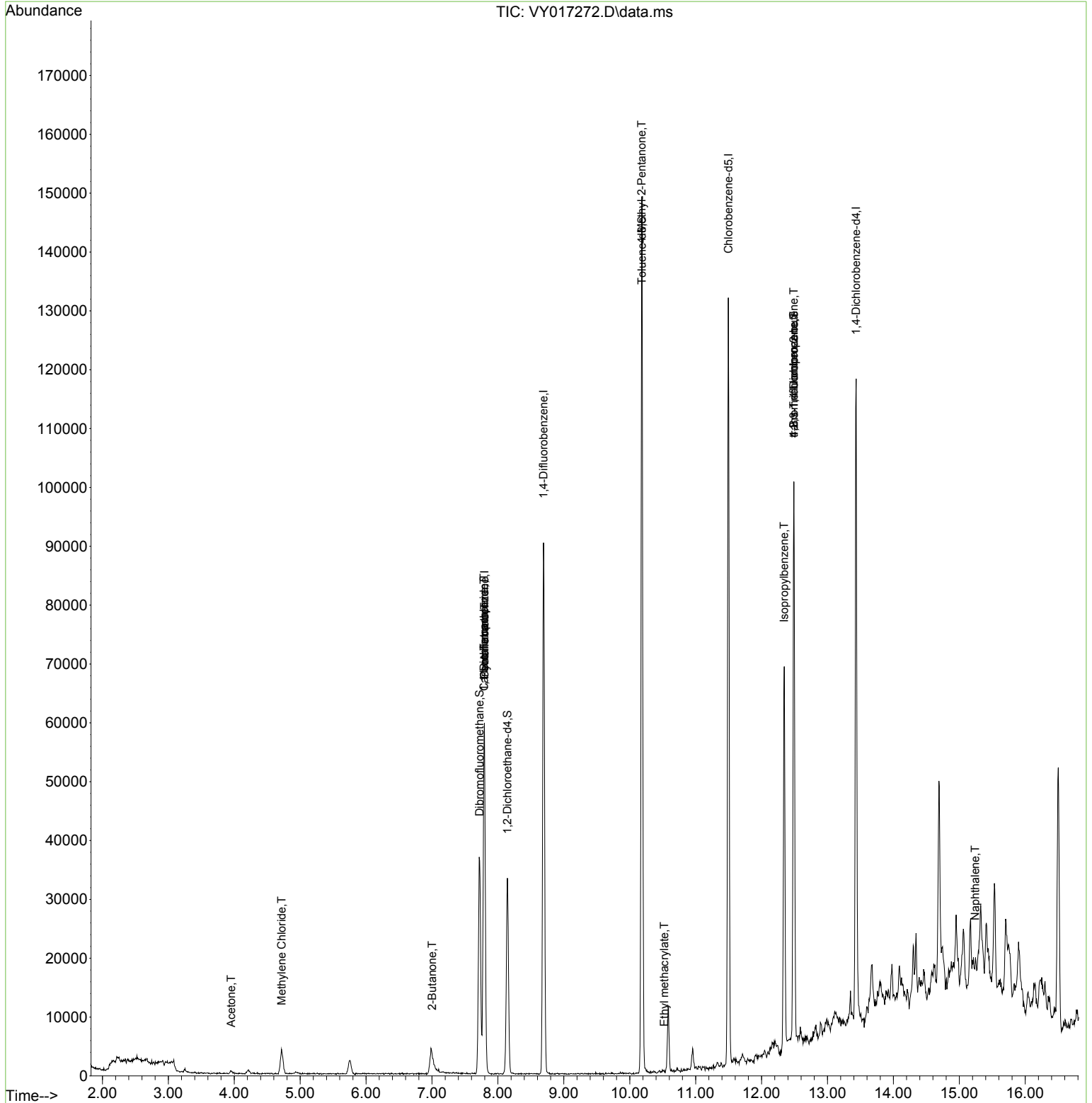
Internal Standards						
1) Pentafluorobenzene	7.795	168	44717	50.000	ug/l	0.00
34) 1,4-Difluorobenzene	8.691	114	78512	50.000	ug/l	0.00
63) Chlorobenzene-d5	11.496	117	69694	50.000	ug/l	0.00
72) 1,4-Dichlorobenzene-d4	13.434	152	26860	50.000	ug/l	0.00
System Monitoring Compounds						
33) 1,2-Dichloroethane-d4	8.143	65	25392	63.564	ug/l	0.00
Spiked Amount	50.000	Range 50 - 163	Recovery	=	127.120%	
35) Dibromofluoromethane	7.722	113	26664	62.899	ug/l	0.00
Spiked Amount	50.000	Range 54 - 147	Recovery	=	125.800%	
50) Toluene-d8	10.185	98	94812	61.429	ug/l	0.00
Spiked Amount	50.000	Range 58 - 134	Recovery	=	122.860%	
62) 4-Bromofluorobenzene	12.489	95	27589	54.567	ug/l	0.00
Spiked Amount	50.000	Range 30 - 143	Recovery	=	109.140%	
Target Compounds						
					Qvalue	
11) Tert butyl alcohol	4.972	59	294	Below Cal	#	75
16) Acetone	3.954	43	886	7.546	ug/l	98
20) Methylene Chloride	4.716	84	2835	2.572	ug/l	94
25) 2-Butanone	7.003	43	214	1.371	ug/l	# 48
31) Cyclohexane	7.795	56	1042	1.294	ug/l	# 22
36) 1,1-Dichloropropene	7.789	75	4208	5.755	ug/l	# 49
38) Carbon Tetrachloride	7.789	117	4676	6.679	ug/l	# 17
51) 4-Methyl-2-Pentanone	10.179	43	510	1.585	ug/l	# 1
56) Ethyl methacrylate	10.526	69	68	3.131	ug/l	# 27
73) Isopropylbenzene	12.343	105	2737	1.387	ug/l	# 70
76) 1,2,3-Trichloropropane	12.489	75	15405	62.139	ug/l	# 100
81) trans-1,4-Dichloro-2-b...	12.489	75	15405	129.116	ug/l	# 13
95) Naphthalene	15.239	128	1388	5.246	ug/l	# 55

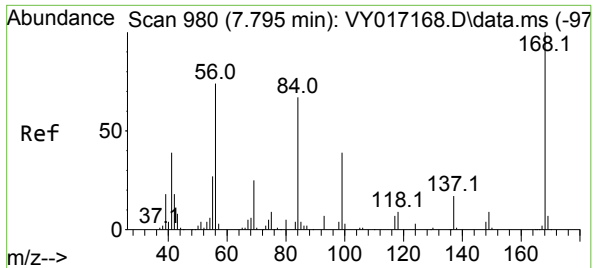
(#) = qualifier out of range (m) = manual integration (+) = signals summed

Data Path : Z:\voasrv\HPCHEM1\MSVOA_Y\Data\VY020624\
 Data File : VY017272.D
 Acq On : 06 Feb 2024 18:11
 Operator : SY/MD
 Sample : P1355-01
 Misc : 5.67g/5.0mL/MSVOA_Y/SOIL/A
 ALS Vial : 23 Sample Multiplier: 1

Instrument :
 MSVOA_Y
 ClientSampleId :
 VNJ-214

Quant Time: Feb 07 00:11:01 2024
 Quant Method : Z:\voasrv\HPCHEM1\MSVOA_Y\methods\82Y020124S.M
 Quant Title : SW846 8260
 QLast Update : Fri Feb 02 00:56:04 2024
 Response via : Initial Calibration

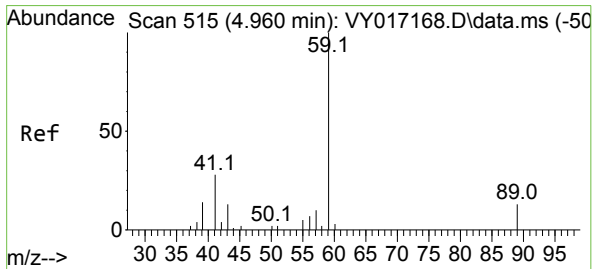
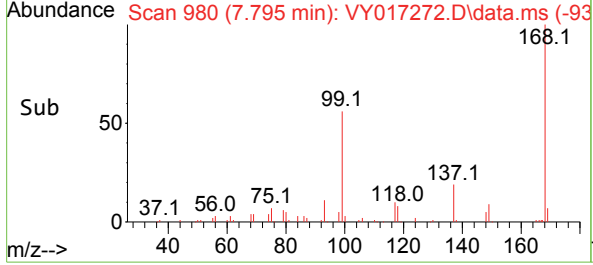
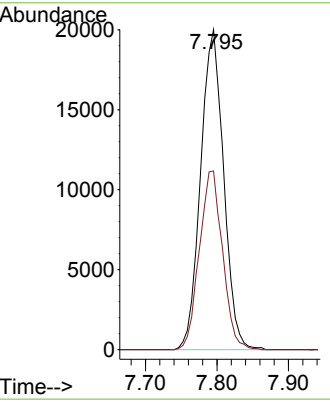
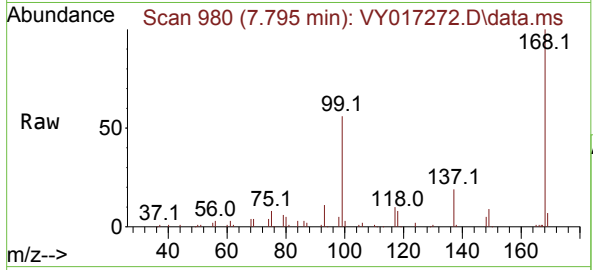




#1
 Pentafluorobenzene
 Concen: 50.000 ug/l
 RT: 7.795 min Scan# 91
 Delta R.T. 0.000 min
 Lab File: VY017272.D
 Acq: 06 Feb 2024 18:11

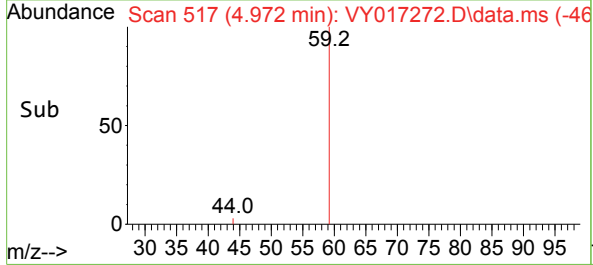
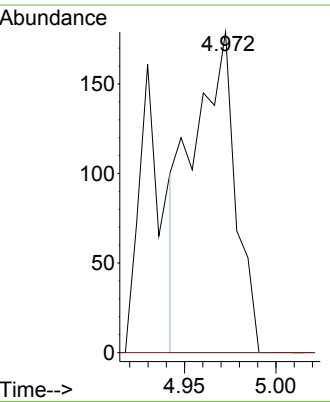
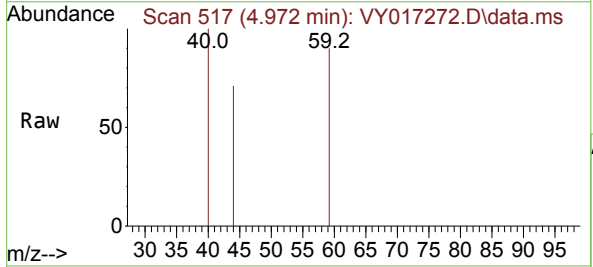
Instrument : MSVOA_Y
 Client Sample Id : VNJ-214

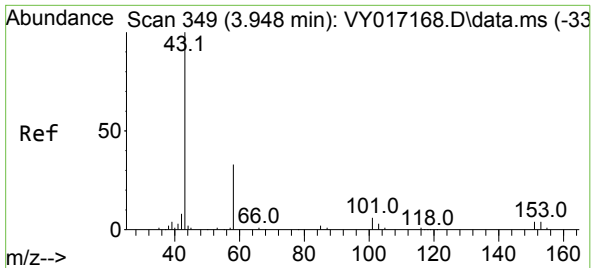
Tgt Ion: 168 Resp: 44717
 Ion Ratio Lower Upper
 168 100
 99 55.9 44.2 66.4



#11
 Tert butyl alcohol
 Concen: Below Cal
 RT: 4.972 min Scan# 517
 Delta R.T. 0.012 min
 Lab File: VY017272.D
 Acq: 06 Feb 2024 18:11

Tgt Ion: 59 Resp: 294
 Ion Ratio Lower Upper
 59 100
 57 0.0 7.4 11.0#

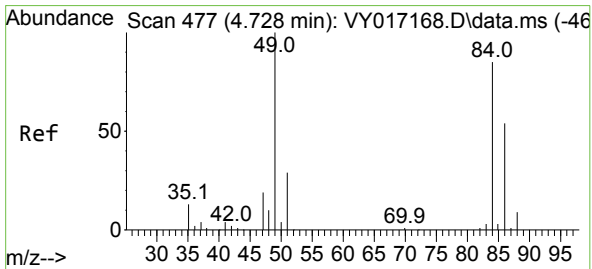
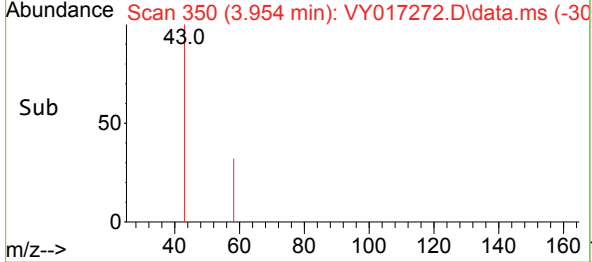
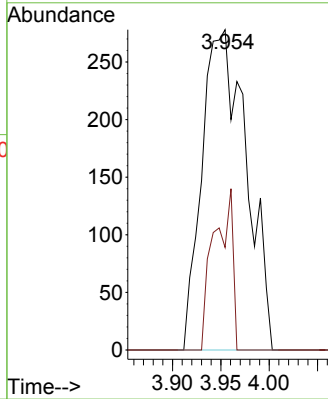
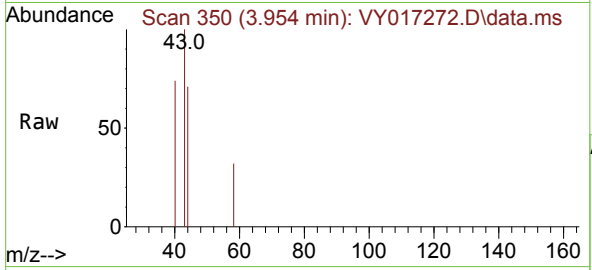




#16
 Acetone
 Concen: 7.546 ug/l
 RT: 3.954 min Scan# 31
 Delta R.T. 0.007 min
 Lab File: VY017272.D
 Acq: 06 Feb 2024 18:11

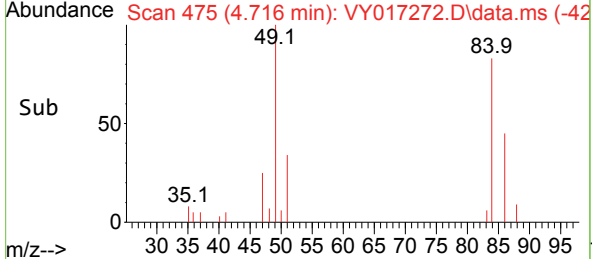
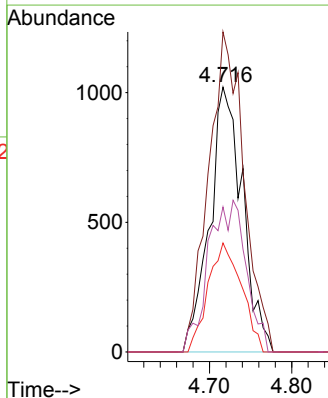
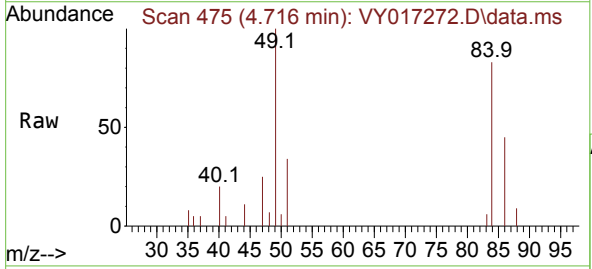
Instrument : MSVOA_Y
 ClientSampleId : VNJ-214

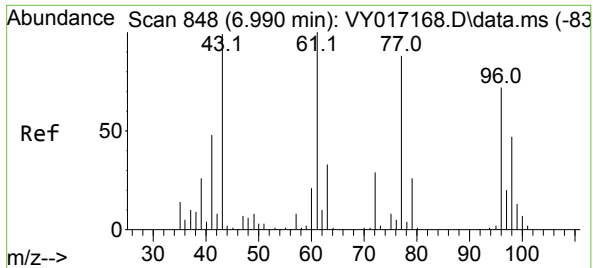
Tgt Ion	Resp	Lower	Upper
43	100		
58	32.0	26.6	39.8



#20
 Methylene Chloride
 Concen: 2.572 ug/l
 RT: 4.716 min Scan# 475
 Delta R.T. -0.012 min
 Lab File: VY017272.D
 Acq: 06 Feb 2024 18:11

Tgt Ion	Resp	Lower	Upper
84	100		
49	120.9	95.2	142.8
51	41.1	29.9	44.9
86	54.8	52.2	78.4

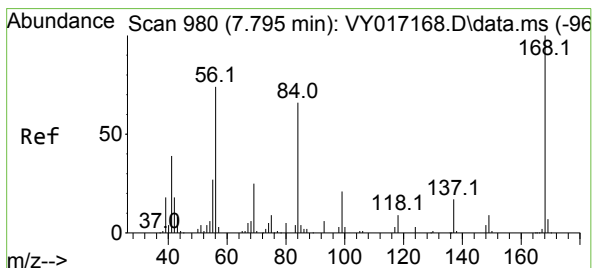
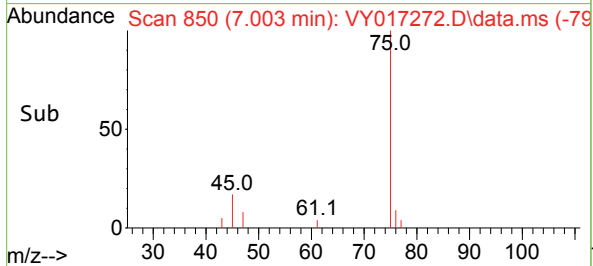
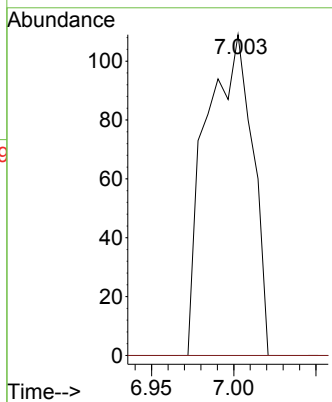
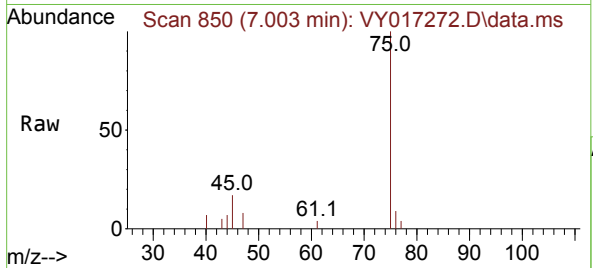




#25
 2-Butanone
 Concen: 1.371 ug/l
 RT: 7.003 min Scan# 81
 Delta R.T. 0.013 min
 Lab File: VY017272.D
 Acq: 06 Feb 2024 18:11

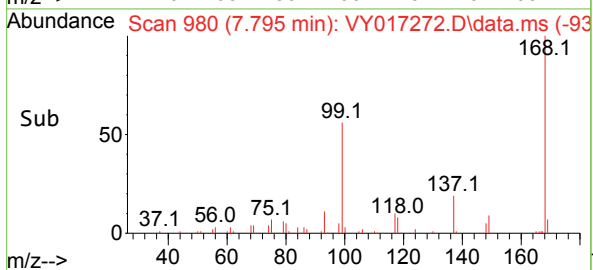
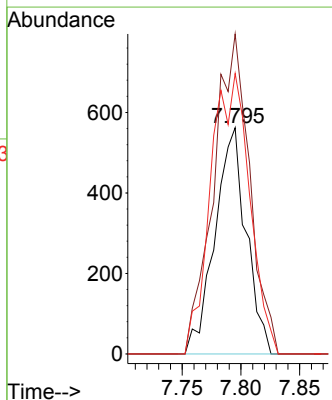
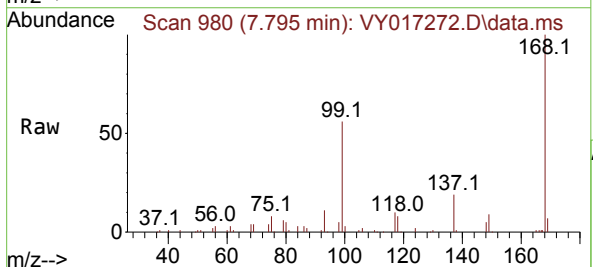
Instrument : MSVOA_Y
 ClientSampleId : VNJ-214

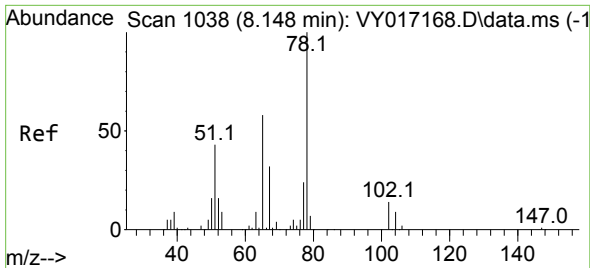
Tgt Ion: 43 Resp: 214
 Ion Ratio Lower Upper
 43 100
 72 0.0 21.4 32.2#



#31
 Cyclohexane
 Concen: 1.294 ug/l
 RT: 7.795 min Scan# 980
 Delta R.T. 0.000 min
 Lab File: VY017272.D
 Acq: 06 Feb 2024 18:11

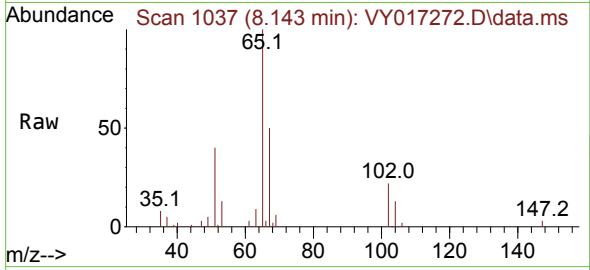
Tgt Ion: 56 Resp: 1042
 Ion Ratio Lower Upper
 56 100
 69 141.5 27.0 40.6#
 84 124.0 71.8 107.6#



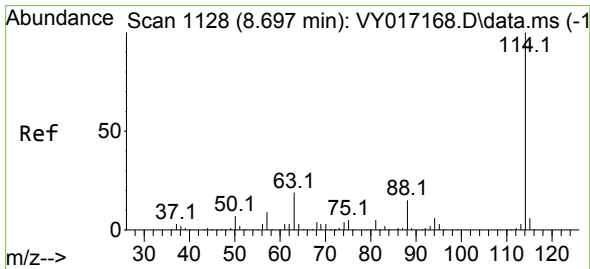
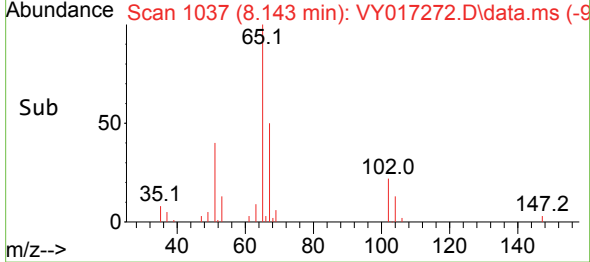
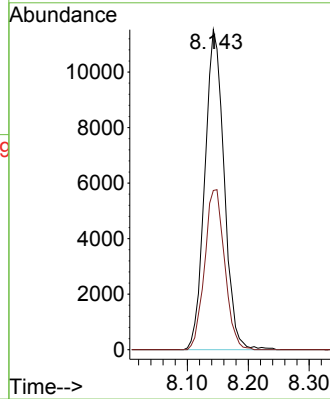


#33
 1,2-Dichloroethane-d4
 Concen: 63.564 ug/l
 RT: 8.143 min Scan# 1037
 Delta R.T. -0.006 min
 Lab File: VY017272.D
 Acq: 06 Feb 2024 18:11

Instrument : MSVOA_Y
 ClientSampleId : VNJ-214

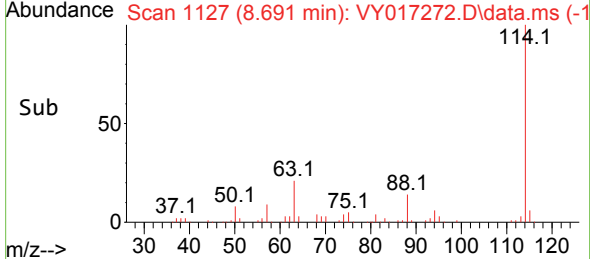
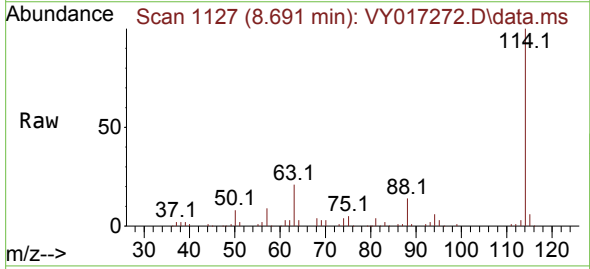
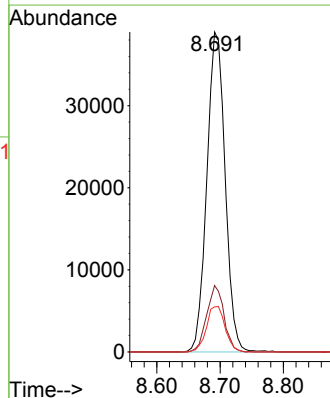


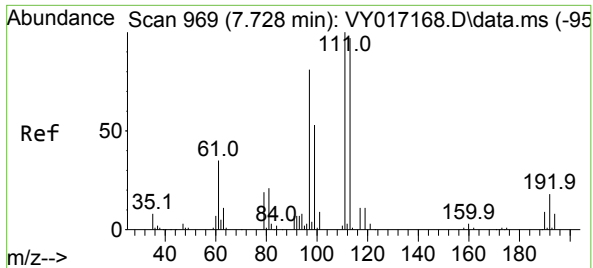
Tgt Ion: 65 Resp: 25392
 Ion Ratio Lower Upper
 65 100
 67 51.8 0.0 109.0



#34
 1,4-Difluorobenzene
 Concen: 50.000 ug/l
 RT: 8.691 min Scan# 1127
 Delta R.T. -0.006 min
 Lab File: VY017272.D
 Acq: 06 Feb 2024 18:11

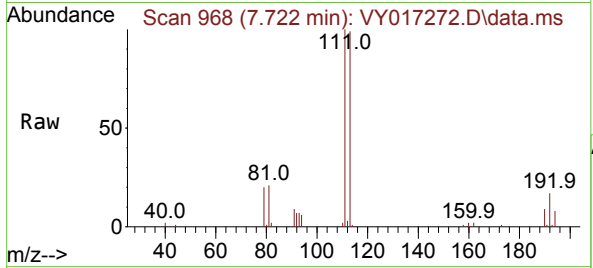
Tgt Ion: 114 Resp: 78512
 Ion Ratio Lower Upper
 114 100
 63 20.8 0.0 37.4
 88 14.1 0.0 29.0



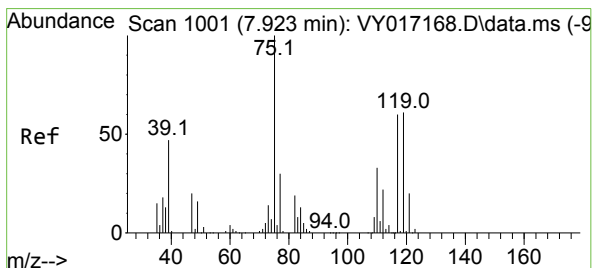
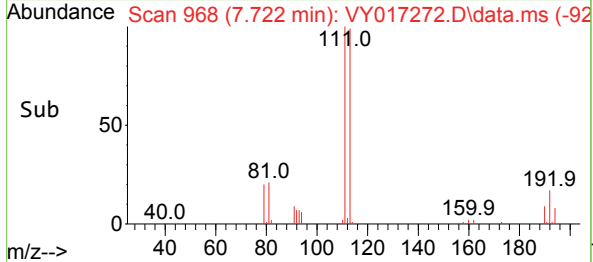
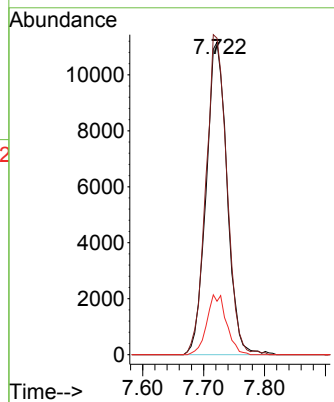


#35
 Dibromofluoromethane
 Concen: 62.899 ug/l
 RT: 7.722 min Scan# 909
 Delta R.T. -0.006 min
 Lab File: VY017272.D
 Acq: 06 Feb 2024 18:11

Instrument : MSVOA_Y
 ClientSampleId : VNJ-214

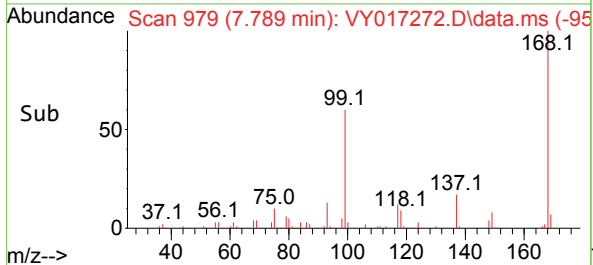
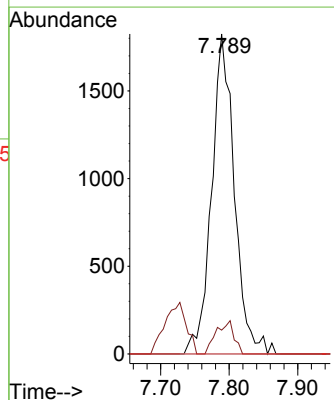
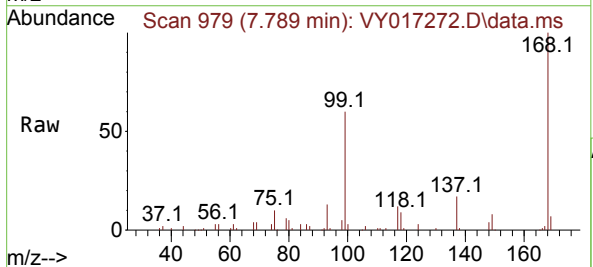


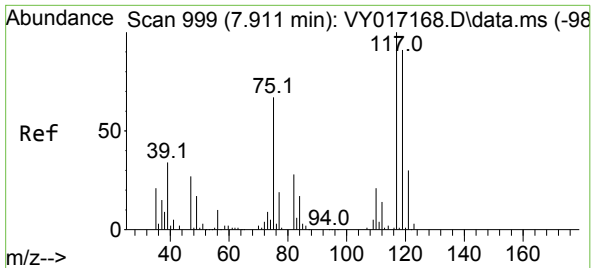
Tgt Ion:113 Resp: 26664
 Ion Ratio Lower Upper
 113 100
 111 102.4 83.8 125.6
 192 18.1 14.5 21.7



#36
 1,1-Dichloropropene
 Concen: 5.755 ug/l
 RT: 7.789 min Scan# 979
 Delta R.T. -0.134 min
 Lab File: VY017272.D
 Acq: 06 Feb 2024 18:11

Tgt Ion: 75 Resp: 4208
 Ion Ratio Lower Upper
 75 100
 110 8.1 17.4 52.3#
 77 0.0 24.7 37.1#



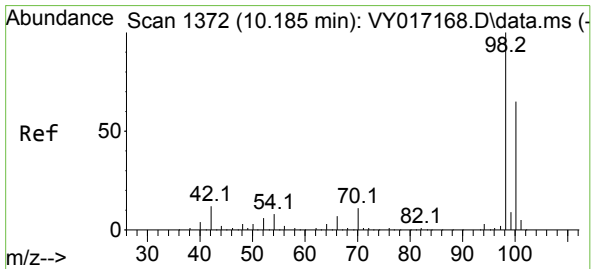
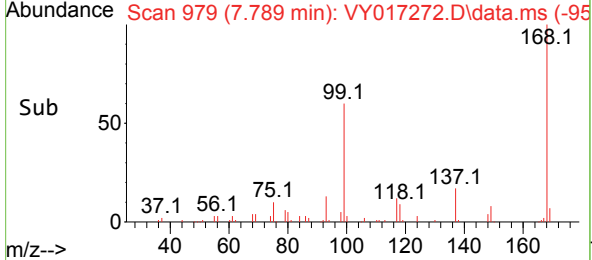
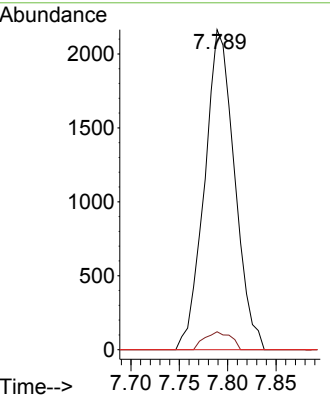
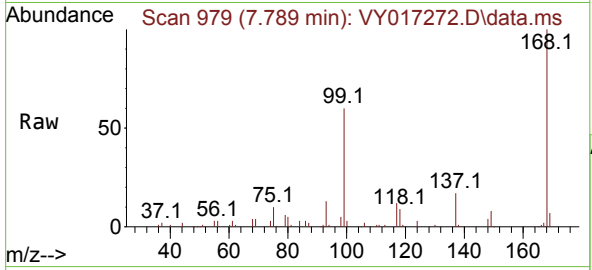


#38
 Carbon Tetrachloride
 Concen: 6.679 ug/l
 RT: 7.789 min Scan# 91
 Delta R.T. -0.122 min
 Lab File: VY017272.D
 Acq: 06 Feb 2024 18:11

Instrument : MSVOA_Y
 ClientSampleId : VNJ-214

Tgt Ion:117 Resp: 4676

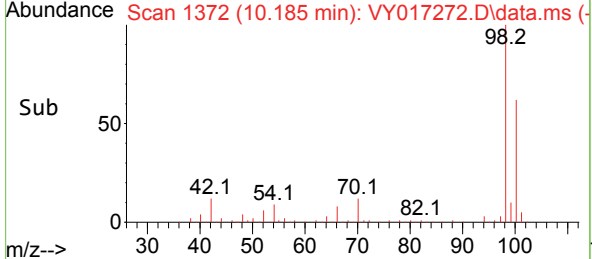
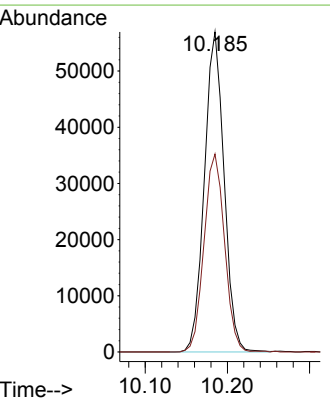
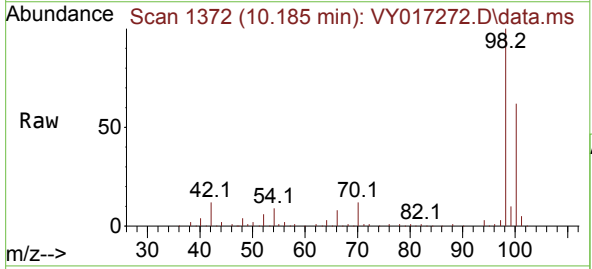
Ion	Ratio	Lower	Upper
117	100		
119	5.6	76.0	114.0#
121	0.0	24.2	36.2#

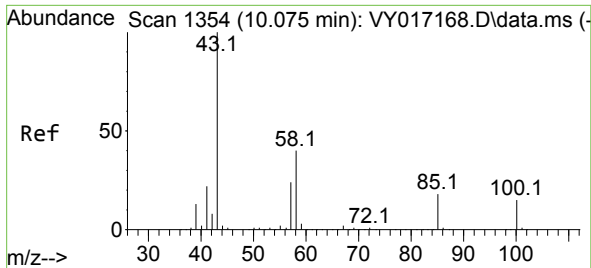


#50
 Toluene-d8
 Concen: 61.429 ug/l
 RT: 10.185 min Scan# 1372
 Delta R.T. 0.000 min
 Lab File: VY017272.D
 Acq: 06 Feb 2024 18:11

Tgt Ion: 98 Resp: 94812

Ion	Ratio	Lower	Upper
98	100		
100	64.5	52.3	78.5

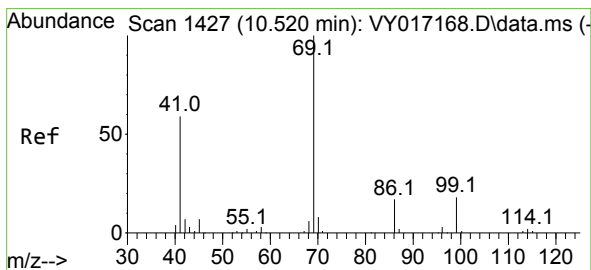
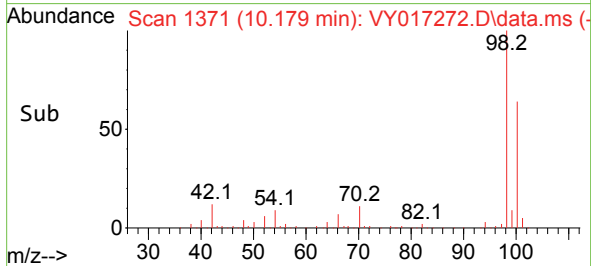
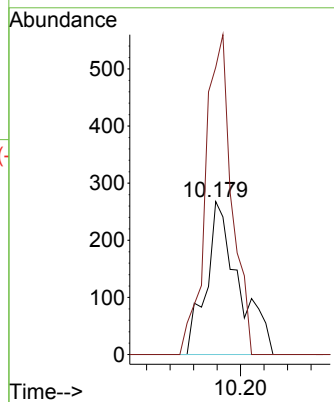
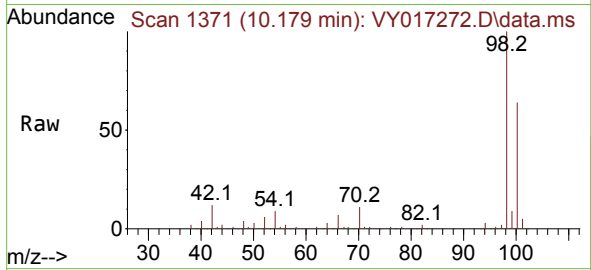




#51
 4-Methyl-2-Pentanone
 Concen: 1.585 ug/l
 RT: 10.179 min Scan# 11
 Delta R.T. 0.104 min
 Lab File: VY017272.D
 Acq: 06 Feb 2024 18:11

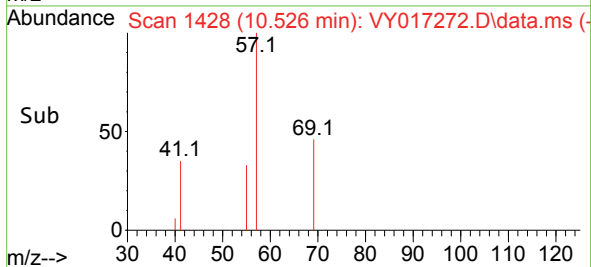
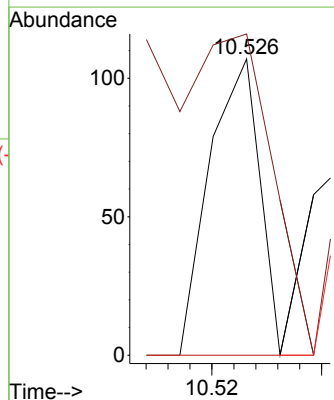
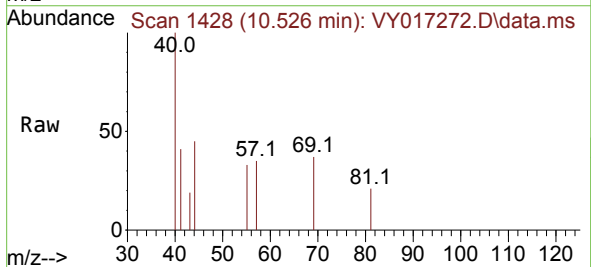
Instrument :
 MSVOA_Y
 ClientSampleId :
 VNJ-214

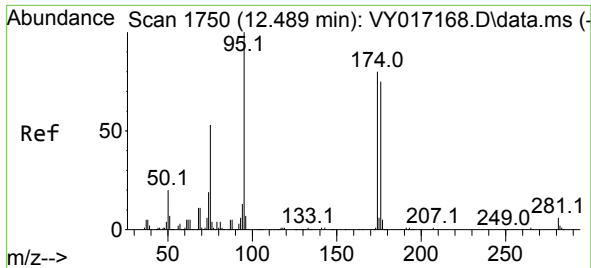
Tgt Ion: 43 Resp: 510
 Ion Ratio Lower Upper
 43 100
 58 171.2 32.2 48.2#



#56
 Ethyl methacrylate
 Concen: 3.131 ug/l
 RT: 10.526 min Scan# 1428
 Delta R.T. 0.006 min
 Lab File: VY017272.D
 Acq: 06 Feb 2024 18:11

Tgt Ion: 69 Resp: 68
 Ion Ratio Lower Upper
 69 100
 41 0.0 49.2 73.8#
 39 0.0 26.8 40.2#



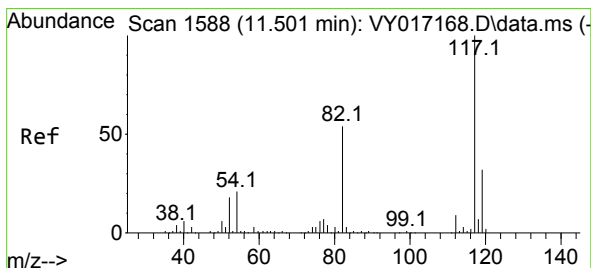
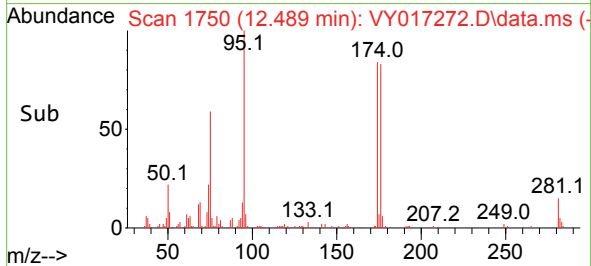
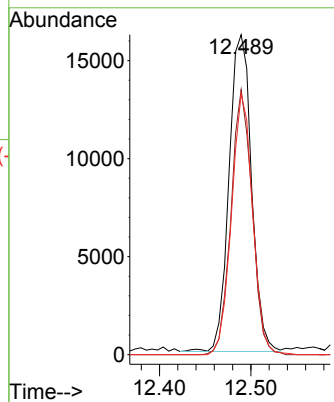
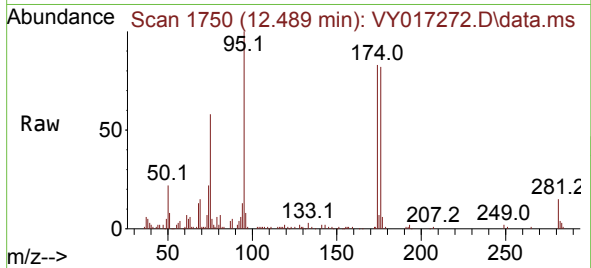


#62
 4-Bromofluorobenzene
 Concen: 54.567 ug/l
 RT: 12.489 min Scan# 1750
 Delta R.T. 0.000 min
 Lab File: VY017272.D
 Acq: 06 Feb 2024 18:11

Instrument : MSVOA_Y
 ClientSampleId : VNJ-214

Tgt Ion: 95 Resp: 27589

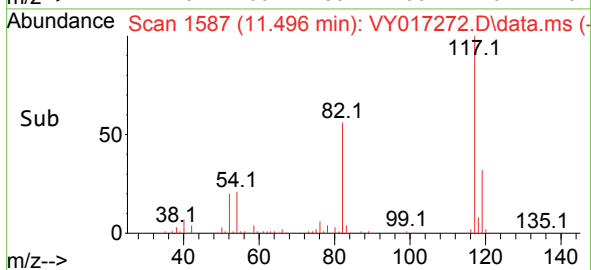
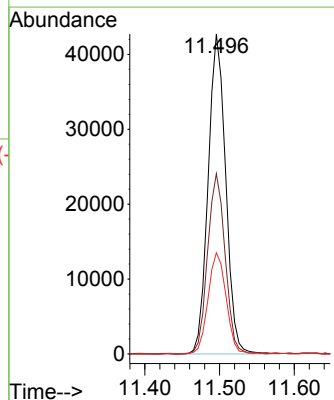
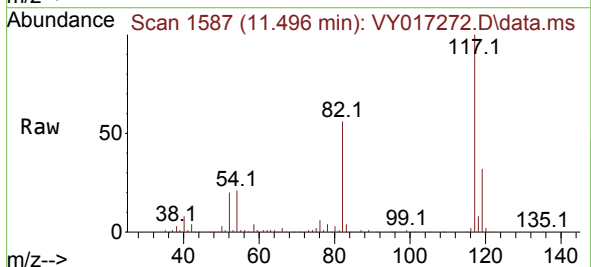
Ion	Ratio	Lower	Upper
95	100		
174	78.7	0.0	160.0
176	77.5	0.0	151.8

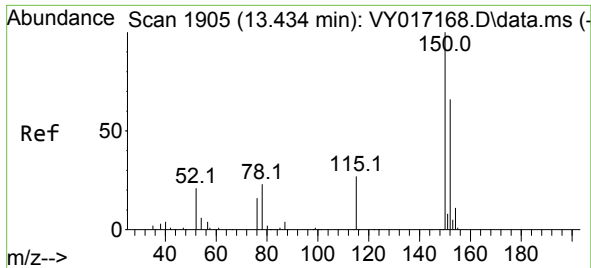


#63
 Chlorobenzene-d5
 Concen: 50.000 ug/l
 RT: 11.496 min Scan# 1587
 Delta R.T. -0.006 min
 Lab File: VY017272.D
 Acq: 06 Feb 2024 18:11

Tgt Ion: 117 Resp: 69694

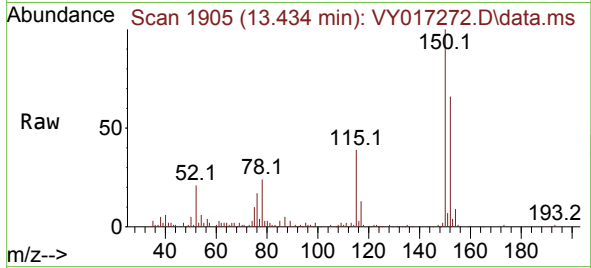
Ion	Ratio	Lower	Upper
117	100		
82	56.4	43.8	65.8
119	31.6	26.5	39.7



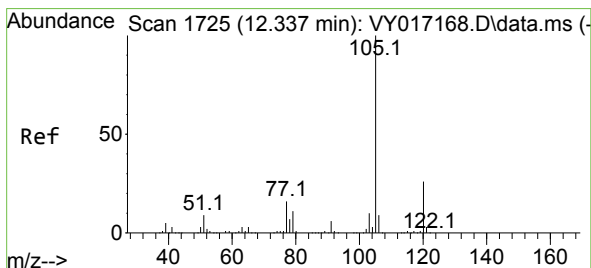
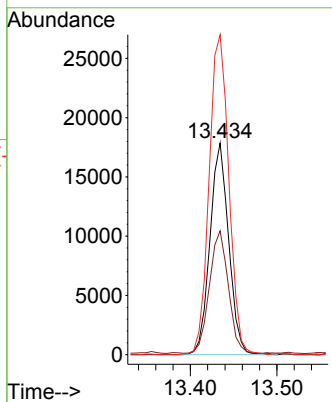
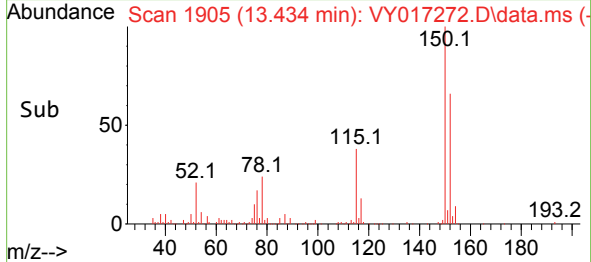


#72
 1,4-Dichlorobenzene-d4
 Concen: 50.000 ug/l
 RT: 13.434 min Scan# 1905
 Delta R.T. 0.000 min
 Lab File: VY017272.D
 Acq: 06 Feb 2024 18:11

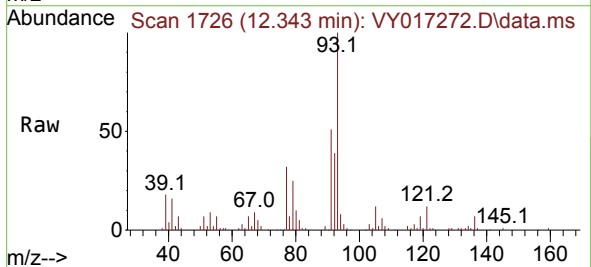
Instrument : MSVOA_Y
 ClientSampleId : VNJ-214



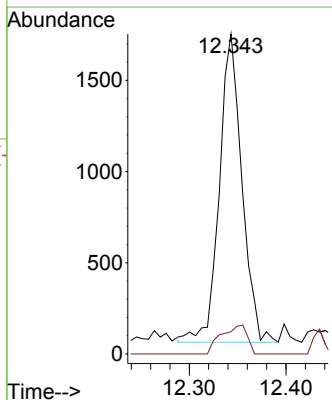
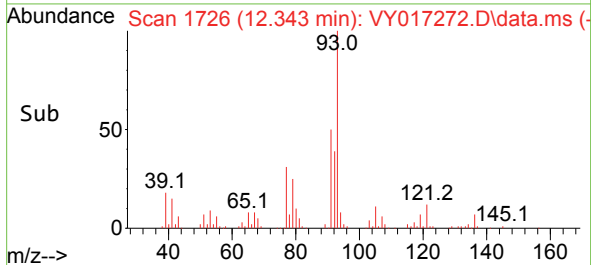
Tgt Ion:152 Resp: 26860
 Ion Ratio Lower Upper
 152 100
 115 58.5 30.0 90.0
 150 159.0 0.0 344.6

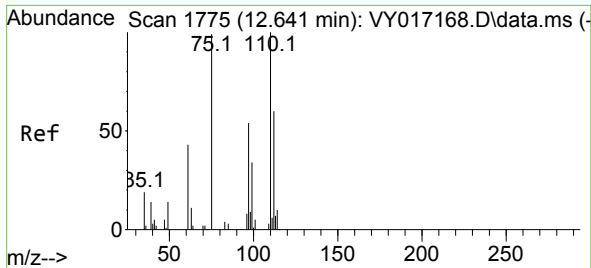


#73
 Isopropylbenzene
 Concen: 1.387 ug/l
 RT: 12.343 min Scan# 1726
 Delta R.T. 0.007 min
 Lab File: VY017272.D
 Acq: 06 Feb 2024 18:11



Tgt Ion:105 Resp: 2737
 Ion Ratio Lower Upper
 105 100
 120 10.7 13.0 39.0#

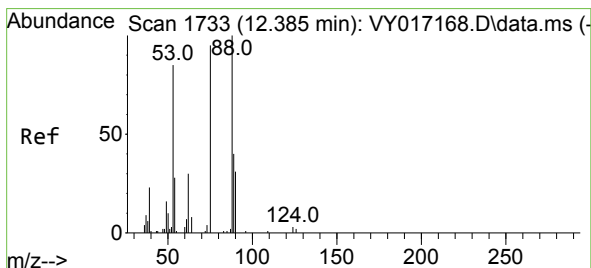
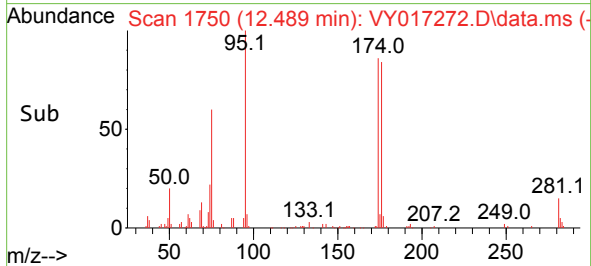
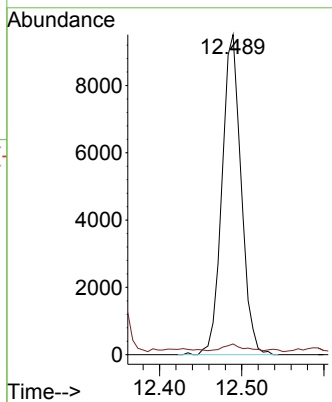
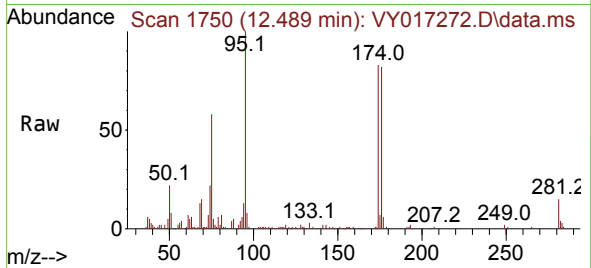




#76
 1,2,3-Trichloropropane
 Concen: 62.139 ug/l
 RT: 12.489 min Scan# 1750
 Delta R.T. -0.152 min
 Lab File: VY017272.D
 Acq: 06 Feb 2024 18:11

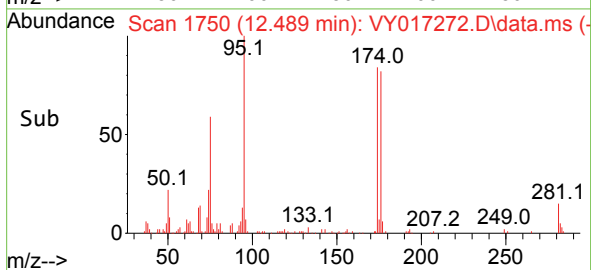
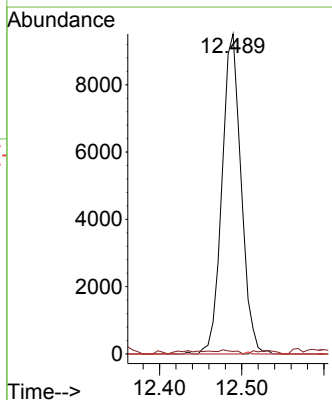
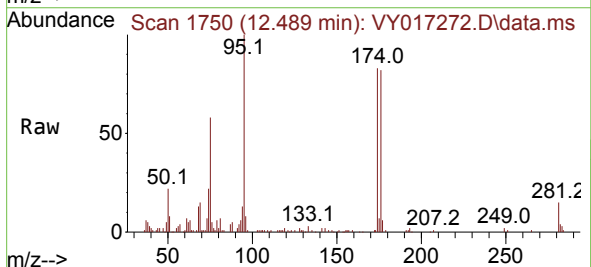
Instrument : MSVOA_Y
 ClientSampleId : VNJ-214

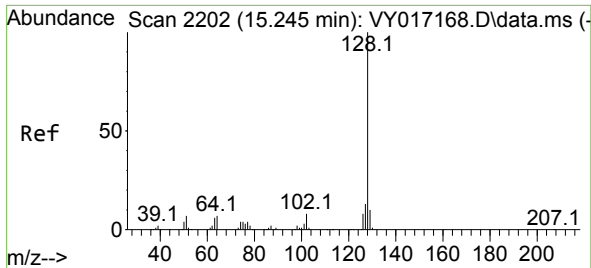
Tgt Ion: 75 Resp: 15405
 Ion Ratio Lower Upper
 75 100
 77 2.5 0.0 0.0#



#81
 trans-1,4-Dichloro-2-butene
 Concen: 129.116 ug/l
 RT: 12.489 min Scan# 1750
 Delta R.T. 0.104 min
 Lab File: VY017272.D
 Acq: 06 Feb 2024 18:11

Tgt Ion: 75 Resp: 15405
 Ion Ratio Lower Upper
 75 100
 53 0.9 74.0 111.0#
 89 0.0 36.5 54.7#





#95
 Naphthalene
 Concen: 5.246 ug/l
 RT: 15.239 min Scan# 21
 Delta R.T. -0.006 min
 Lab File: VY017272.D
 Acq: 06 Feb 2024 18:11

Instrument :
 MSVOA_Y
 ClientSampleId :
 VNJ-214

Tgt Ion	Resp	Lower	Upper
128	1388		
127	41.1	10.2	15.4#
129	5.8	8.6	12.8#

