

Data Path : Z:\voasrv\HPCHEM1\MSVOA_Y\Data\VY020723\
 Data File : VY012526.D
 Acq On : 07 Feb 2023 18:11
 Operator : KP/MD
 Sample : 01445-09
 Misc : 4.72g/5.0mL/MSVOA_Y/SOIL
 ALS Vial : 21 Sample Multiplier: 1

Instrument :
 MSVOA_Y
 ClientSampleId :
 JPP-34-020323

Quant Time: Feb 08 01:48:11 2023
 Quant Method : Z:\voasrv\HPCHEM1\MSVOA_Y\methods\82Y020723S.M
 Quant Title : SW846 8260
 QLast Update : Wed Feb 08 01:09:03 2023
 Response via : Initial Calibration

Compound	R.T.	QIon	Response	Conc	Units	Dev(Min)

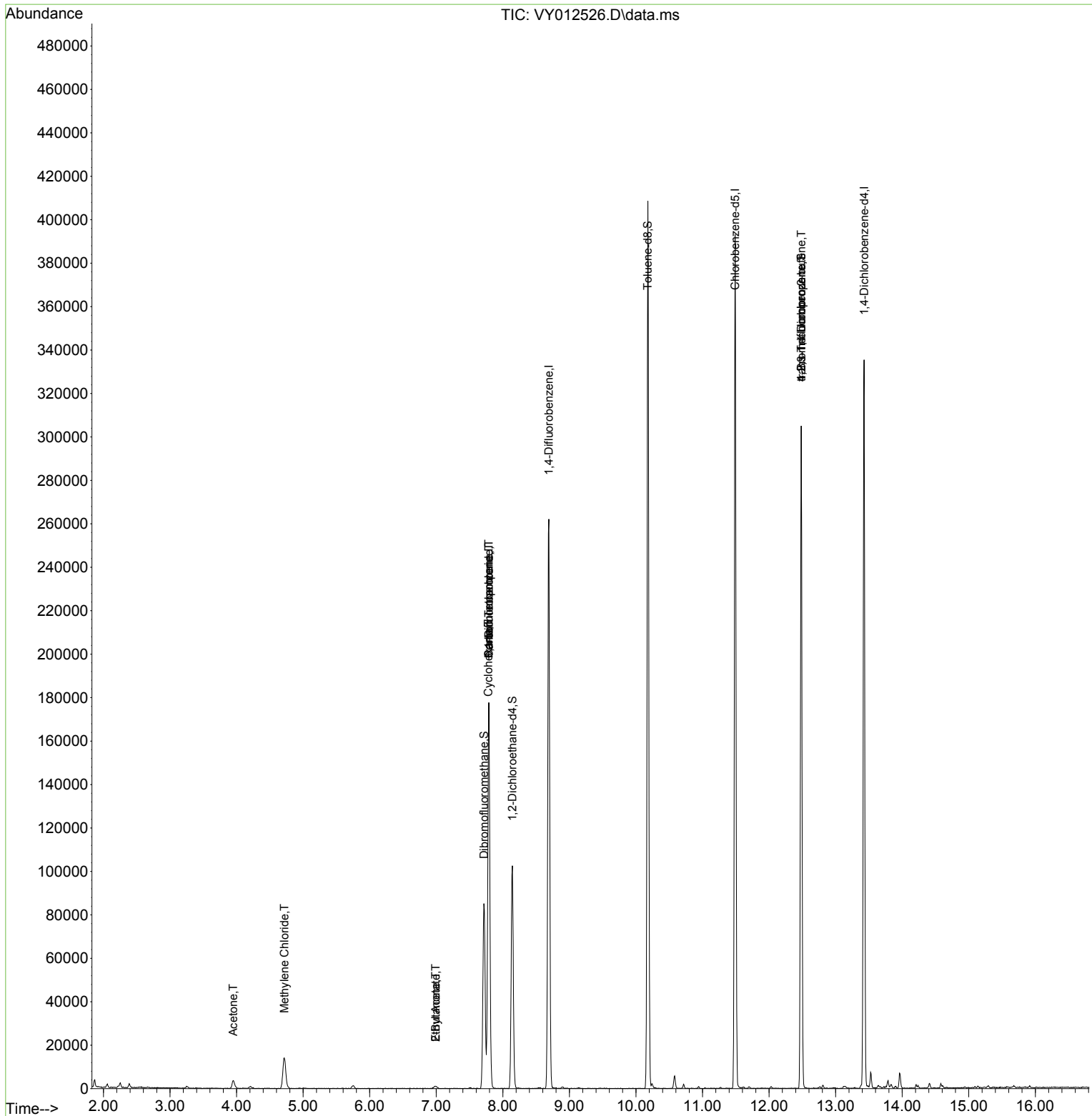
Internal Standards						
1) Pentafluorobenzene	7.789	168	138634	50.000	ug/l	0.00
34) 1,4-Difluorobenzene	8.691	114	234329	50.000	ug/l	0.00
63) Chlorobenzene-d5	11.490	117	222065	50.000	ug/l	0.00
72) 1,4-Dichlorobenzene-d4	13.428	152	92259	50.000	ug/l	0.00
System Monitoring Compounds						
33) 1,2-Dichloroethane-d4	8.143	65	87342	49.544	ug/l	0.00
Spiked Amount	50.000	Range	50 - 163	Recovery	=	99.080%
35) Dibromofluoromethane	7.716	113	59267	34.730	ug/l	0.00
Spiked Amount	50.000	Range	54 - 147	Recovery	=	69.460%
50) Toluene-d8	10.179	98	273627	38.522	ug/l	0.00
Spiked Amount	50.000	Range	49 - 140	Recovery	=	77.040%
62) 4-Bromofluorobenzene	12.483	95	85783	34.624	ug/l	0.00
Spiked Amount	50.000	Range	25 - 144	Recovery	=	69.240%
Target Compounds						
						Qvalue
2) Dichlorodifluoromethane	1.906	85	23	Below Cal	#	41
5) Bromomethane	2.668	94	100	Below Cal		92
11) Tert butyl alcohol	4.942	59	131	Below Cal	#	75
16) Acetone	3.948	43	6370	15.013	ug/l	92
20) Methylene Chloride	4.716	84	11921	3.608	ug/l	92
25) 2-Butanone	6.990	43	1469	3.120	ug/l	# 82
31) Cyclohexane	7.783	56	2546	1.249	ug/l	# 48
36) 1,1-Dichloropropene	7.789	75	9159	3.966	ug/l	# 50
37) Ethyl Acetate	6.990	43	1469	1.410	ug/l	# 64
38) Carbon Tetrachloride	7.789	117	13270	4.280	ug/l	# 17
76) 1,2,3-Trichloropropane	12.483	75	45669	44.307	ug/l	# 100
81) trans-1,4-Dichloro-2-b...	12.483	75	45669	99.914	ug/l	# 12

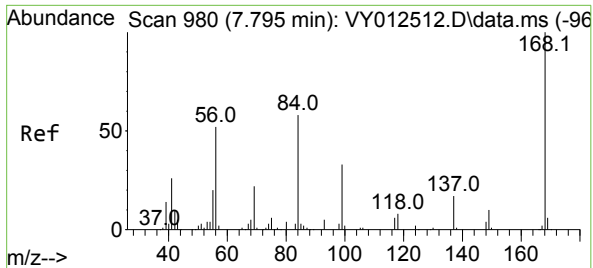
(#) = qualifier out of range (m) = manual integration (+) = signals summed

Data Path : Z:\voasrv\HPCHEM1\MSVOA_Y\Data\VY020723\
 Data File : VY012526.D
 Acq On : 07 Feb 2023 18:11
 Operator : KP/MD
 Sample : 01445-09
 Misc : 4.72g/5.0mL/MSVOA_Y/SOIL
 ALS Vial : 21 Sample Multiplier: 1

Instrument :
 MSVOA_Y
 ClientSampleId :
 JPP-34-020323

Quant Time: Feb 08 01:48:11 2023
 Quant Method : Z:\voasrv\HPCHEM1\MSVOA_Y\methods\82Y020723S.M
 Quant Title : SW846 8260
 QLast Update : Wed Feb 08 01:09:03 2023
 Response via : Initial Calibration

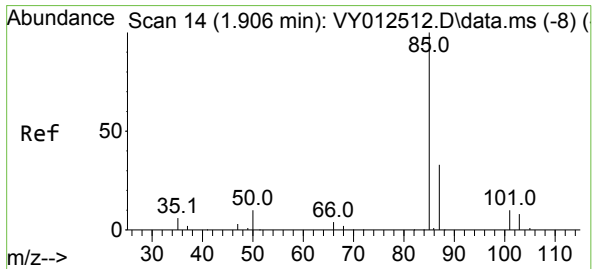
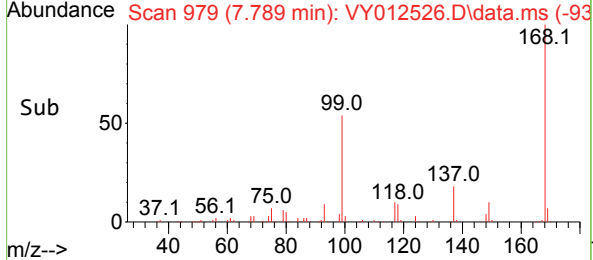
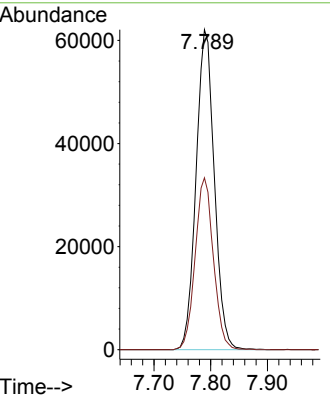
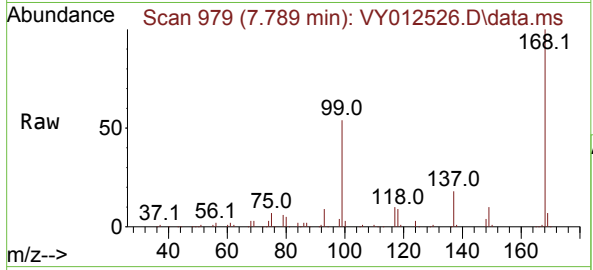




#1
 Pentafluorobenzene
 Concen: 50.000 ug/l
 RT: 7.789 min Scan# 91
 Delta R.T. -0.006 min
 Lab File: VY012526.D
 Acq: 07 Feb 2023 18:11

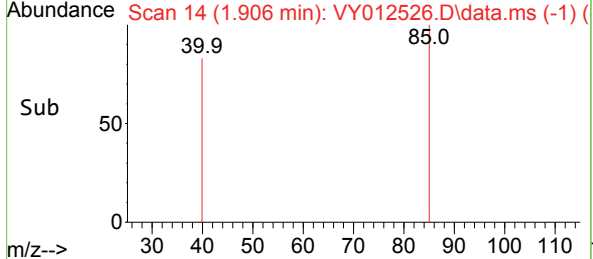
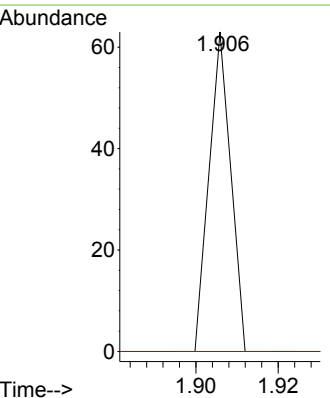
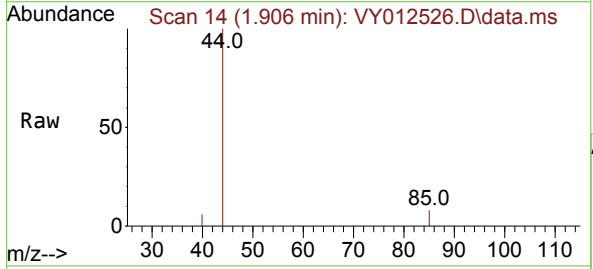
Instrument : MSVOA_Y
 ClientSampleId : JPP-34-020323

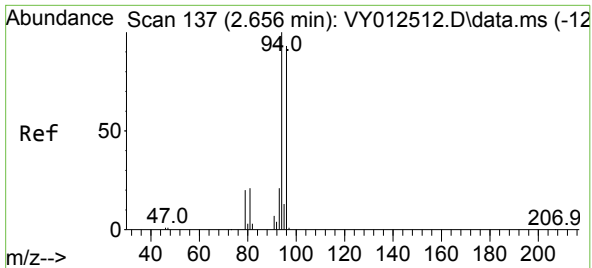
Tgt Ion:168 Resp: 138634
 Ion Ratio Lower Upper
 168 100
 99 53.7 40.8 61.2



#2
 Dichlorodifluoromethane
 Concen: Below Cal
 RT: 1.906 min Scan# 14
 Delta R.T. -0.000 min
 Lab File: VY012526.D
 Acq: 07 Feb 2023 18:11

Tgt Ion: 85 Resp: 23
 Ion Ratio Lower Upper
 85 100
 87 0.0 16.6 49.8#

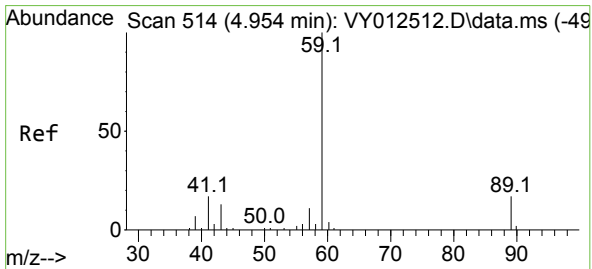
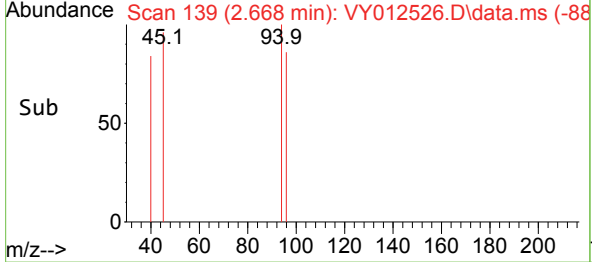
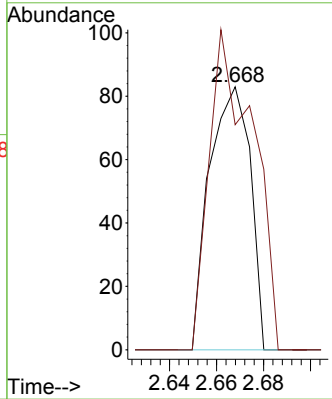
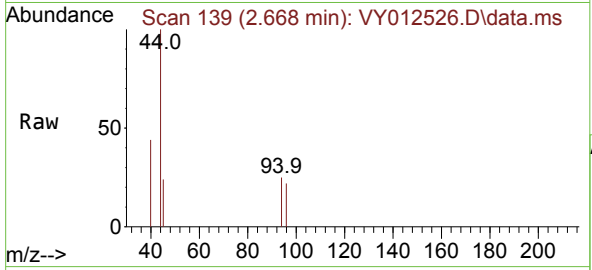




#5
 Bromomethane
 Concen: Below Cal
 RT: 2.668 min Scan# 111
 Delta R.T. 0.012 min
 Lab File: VY012526.D
 Acq: 07 Feb 2023 18:11

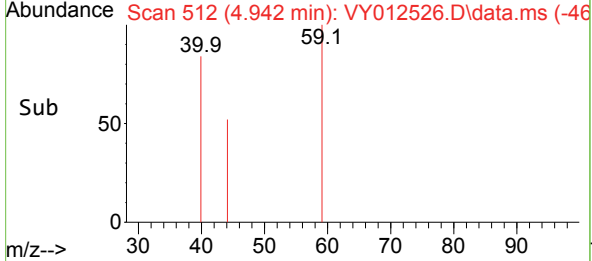
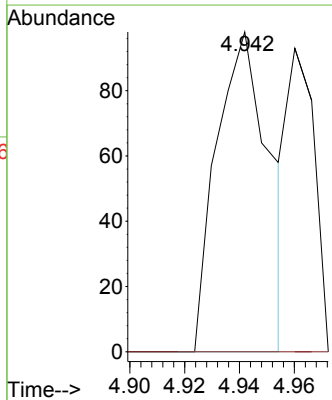
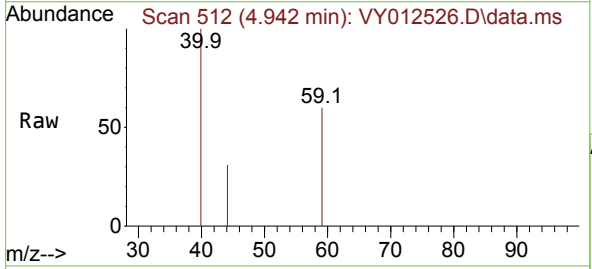
Instrument : MSVOA_Y
 ClientSampleId : JPP-34-020323

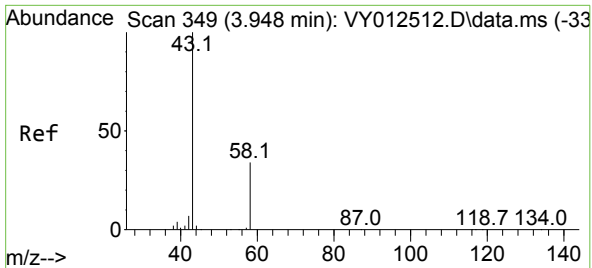
Tgt Ion: 94 Resp: 100
 Ion Ratio Lower Upper
 94 100
 96 85.5 74.7 112.1



#11
 Tert butyl alcohol
 Concen: Below Cal
 RT: 4.942 min Scan# 512
 Delta R.T. -0.012 min
 Lab File: VY012526.D
 Acq: 07 Feb 2023 18:11

Tgt Ion: 59 Resp: 131
 Ion Ratio Lower Upper
 59 100
 57 0.0 7.2 10.8#

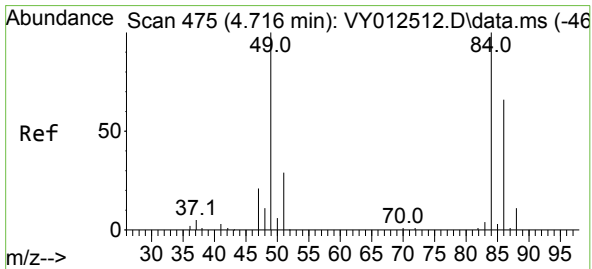
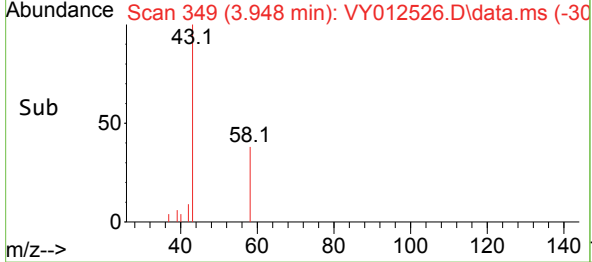
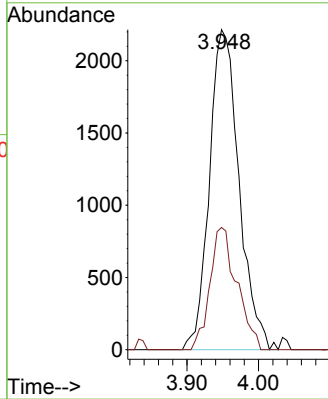
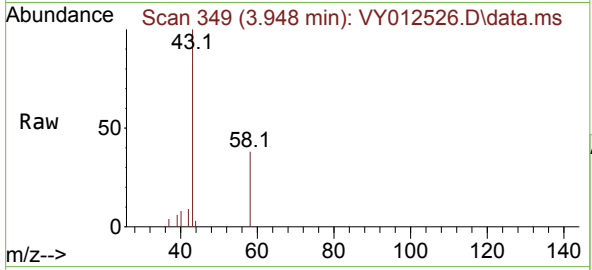




#16
 Acetone
 Concen: 15.013 ug/l
 RT: 3.948 min Scan# 349
 Delta R.T. 0.000 min
 Lab File: VY012526.D
 Acq: 07 Feb 2023 18:11

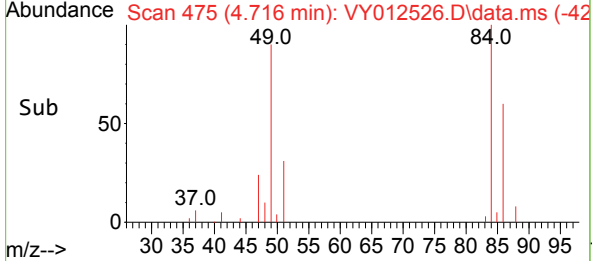
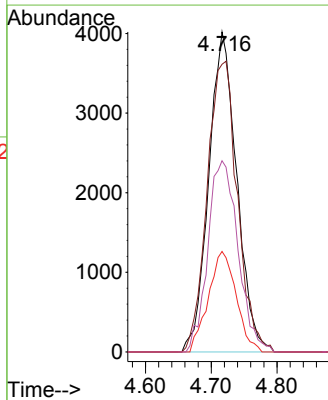
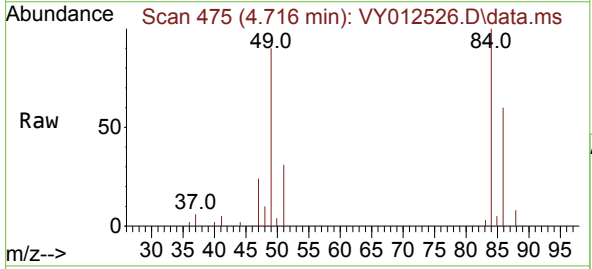
Instrument : MSVOA_Y
 ClientSampleId : JPP-34-020323

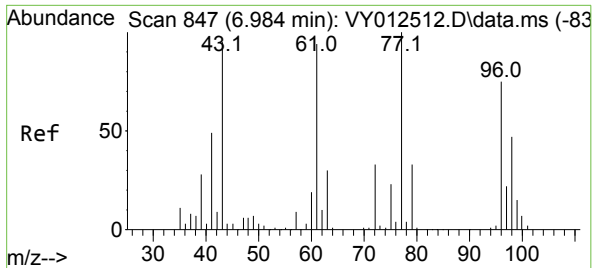
Tgt Ion	Resp	Lower	Upper
43	100		
58	38.2	27.1	40.7



#20
 Methylene Chloride
 Concen: 3.608 ug/l
 RT: 4.716 min Scan# 475
 Delta R.T. 0.000 min
 Lab File: VY012526.D
 Acq: 07 Feb 2023 18:11

Tgt Ion	Resp	Lower	Upper
84	100		
49	89.9	79.8	119.6
51	31.4	23.4	35.2
86	59.7	52.5	78.7

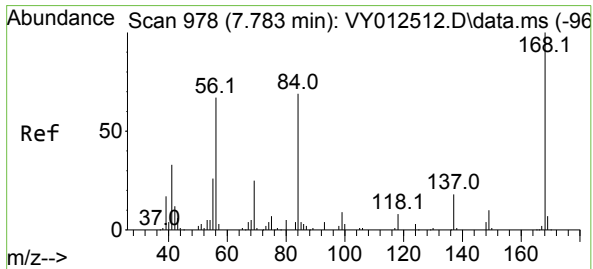
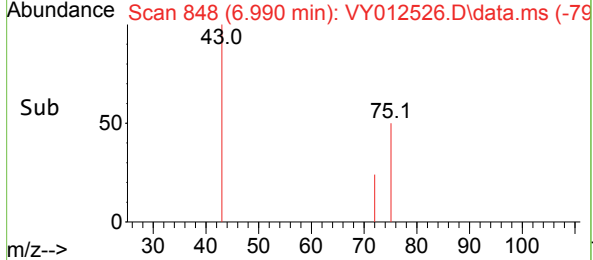
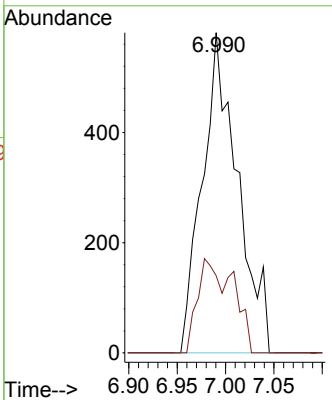
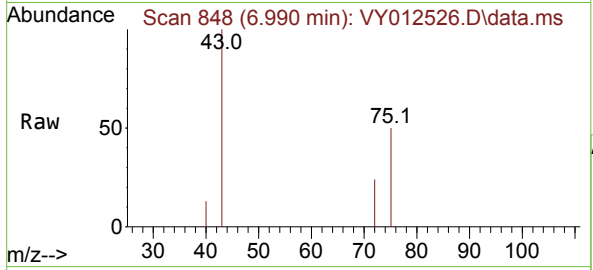




#25
 2-Butanone
 Concen: 3.120 ug/l
 RT: 6.990 min Scan# 847
 Delta R.T. 0.006 min
 Lab File: VY012526.D
 Acq: 07 Feb 2023 18:11

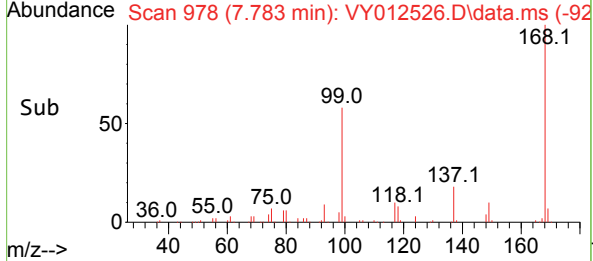
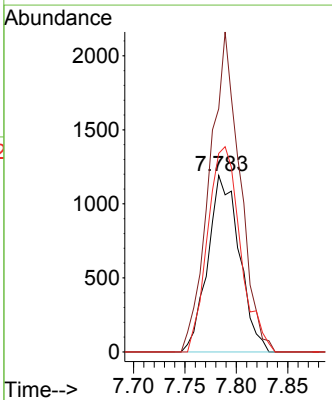
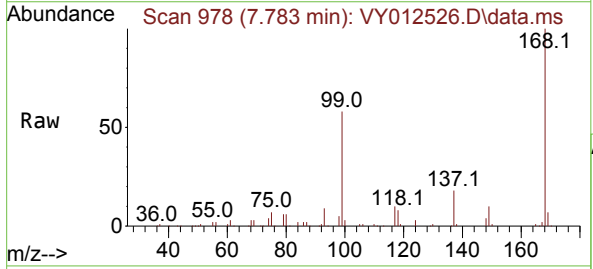
Instrument : MSVOA_Y
 ClientSampleId : JPP-34-020323

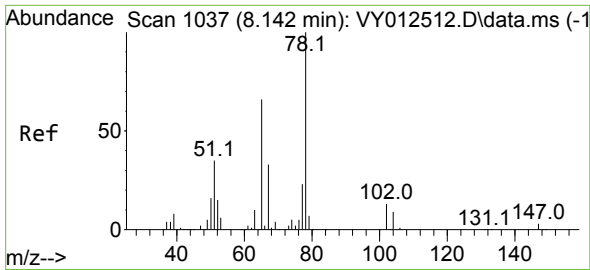
Tgt Ion: 43 Resp: 1469
 Ion Ratio Lower Upper
 43 100
 72 24.1 27.4 41.2#



#31
 Cyclohexane
 Concen: 1.249 ug/l
 RT: 7.783 min Scan# 978
 Delta R.T. 0.000 min
 Lab File: VY012526.D
 Acq: 07 Feb 2023 18:11

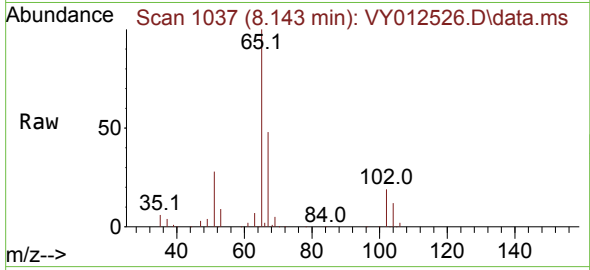
Tgt Ion: 56 Resp: 2546
 Ion Ratio Lower Upper
 56 100
 69 137.8 29.5 44.3#
 84 112.5 81.9 122.9



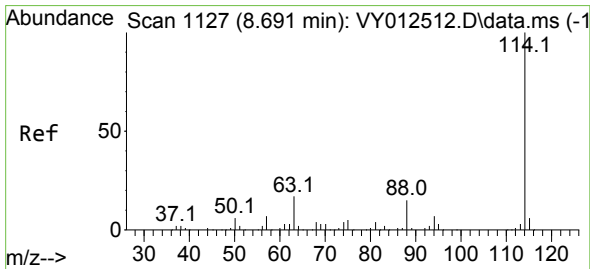
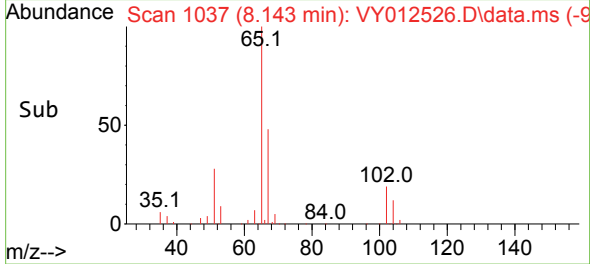
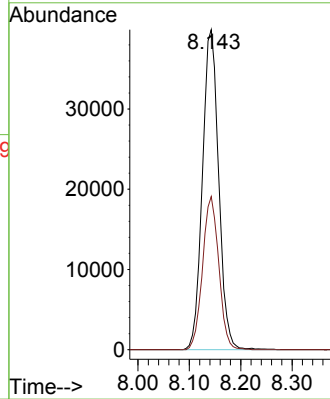


#33
 1,2-Dichloroethane-d4
 Concen: 49.544 ug/l
 RT: 8.143 min Scan# 1037
 Delta R.T. 0.000 min
 Lab File: VY012526.D
 Acq: 07 Feb 2023 18:11

Instrument : MSVOA_Y
 ClientSampleId : JPP-34-020323

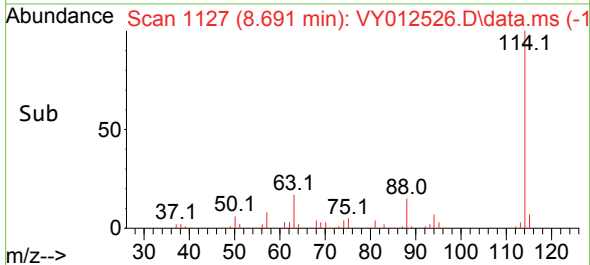
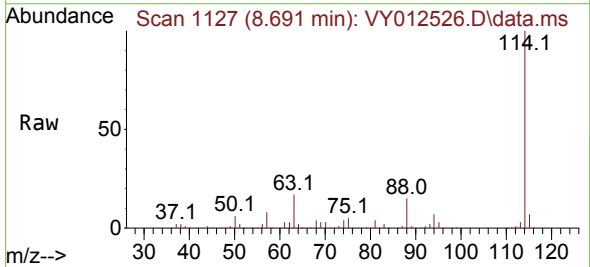
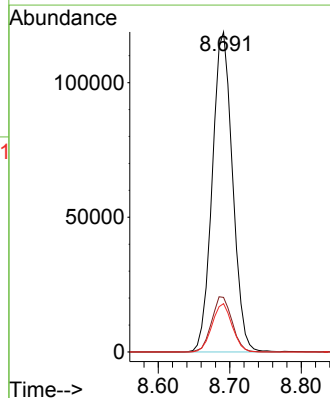


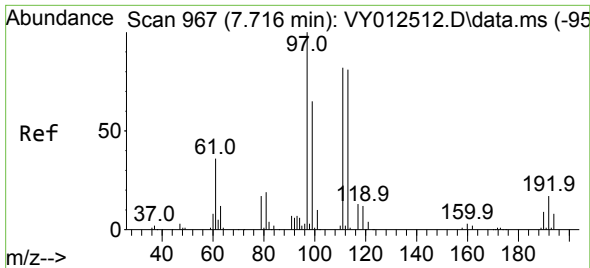
Tgt Ion: 65 Resp: 87342
 Ion Ratio Lower Upper
 65 100
 67 47.8 0.0 98.6



#34
 1,4-Difluorobenzene
 Concen: 50.000 ug/l
 RT: 8.691 min Scan# 1127
 Delta R.T. 0.000 min
 Lab File: VY012526.D
 Acq: 07 Feb 2023 18:11

Tgt Ion: 114 Resp: 234329
 Ion Ratio Lower Upper
 114 100
 63 17.1 0.0 33.6
 88 15.1 0.0 29.8

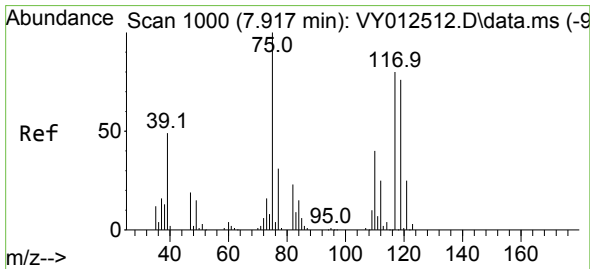
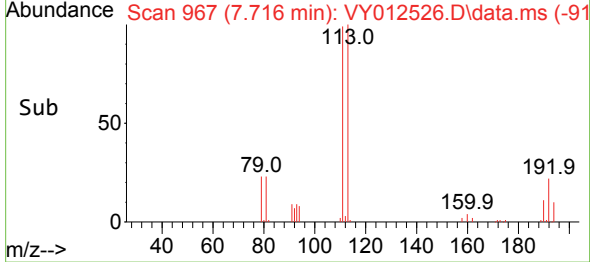
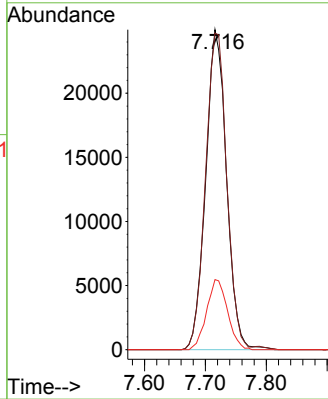
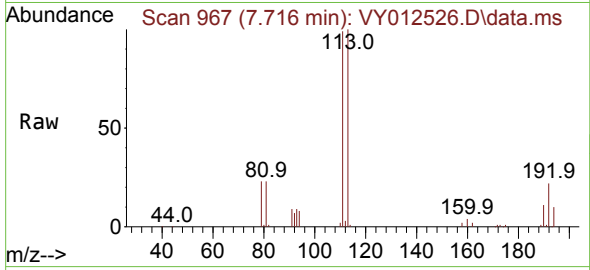




#35
 Dibromofluoromethane
 Concen: 34.730 ug/l
 RT: 7.716 min Scan# 909
 Delta R.T. 0.000 min
 Lab File: VY012526.D
 Acq: 07 Feb 2023 18:11

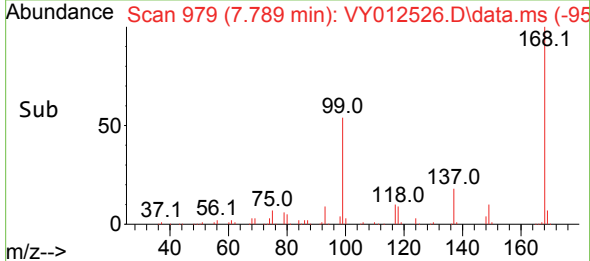
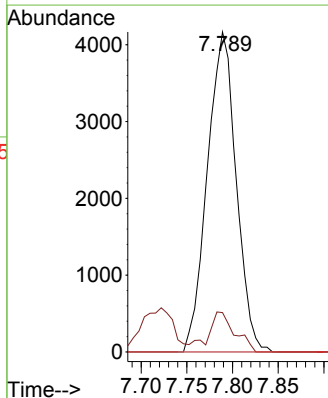
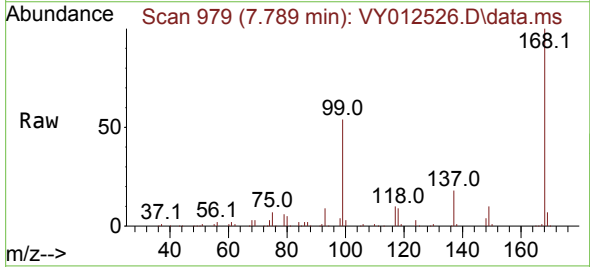
Instrument :
 MSVOA_Y
 ClientSampleId :
 JPP-34-020323

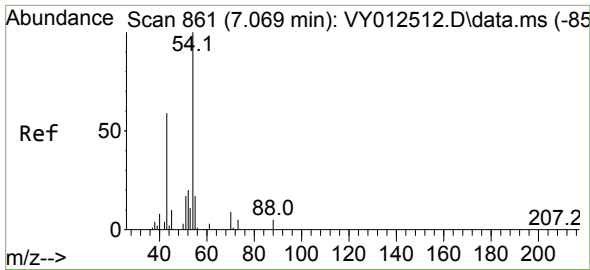
Tgt Ion	Resp	Lower	Upper
113	100		
111	100.8	81.9	122.9
192	22.0	17.5	26.3



#36
 1,1-Dichloropropene
 Concen: 3.966 ug/l
 RT: 7.789 min Scan# 979
 Delta R.T. -0.128 min
 Lab File: VY012526.D
 Acq: 07 Feb 2023 18:11

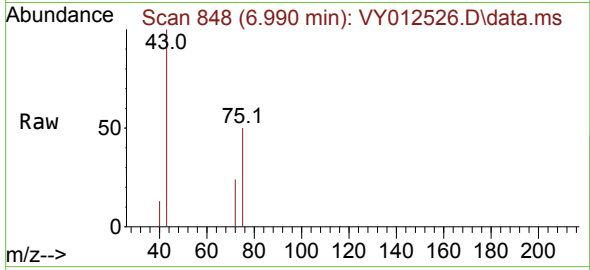
Tgt Ion	Resp	Lower	Upper
75	100		
110	11.4	19.5	58.5#
77	0.0	24.9	37.3#



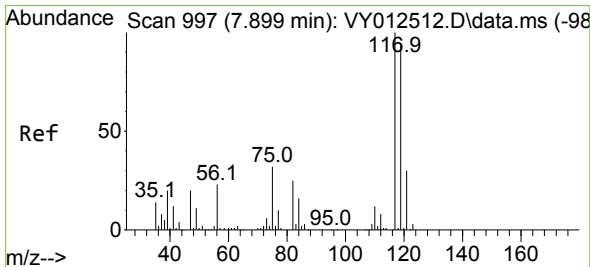
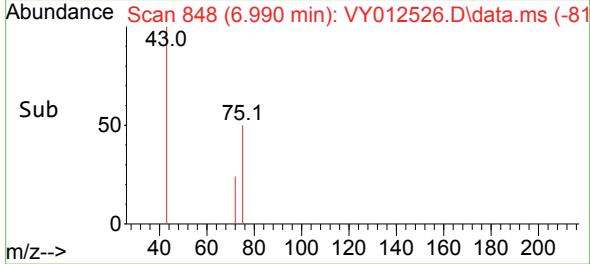
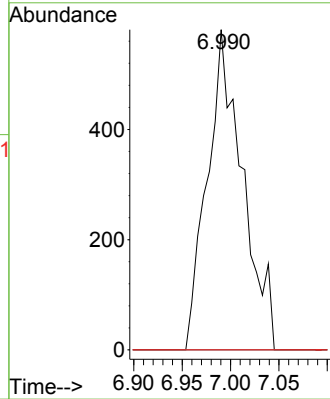


#37
 Ethyl Acetate
 Concen: 1.410 ug/l
 RT: 6.990 min Scan# 848
 Delta R.T. -0.079 min
 Lab File: VY012526.D
 Acq: 07 Feb 2023 18:11

Instrument :
 MSVOA_Y
 ClientSampleId :
 JPP-34-020323

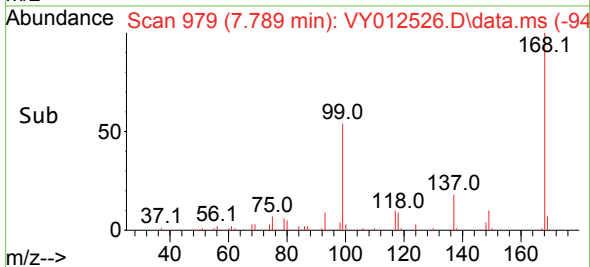
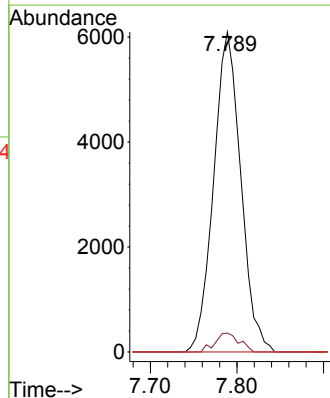
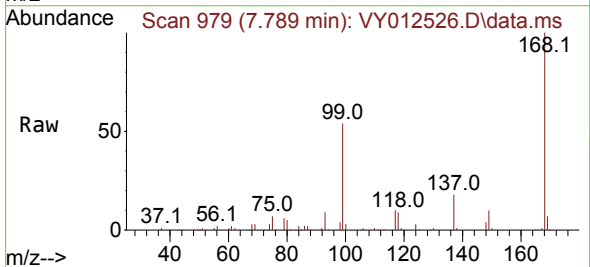


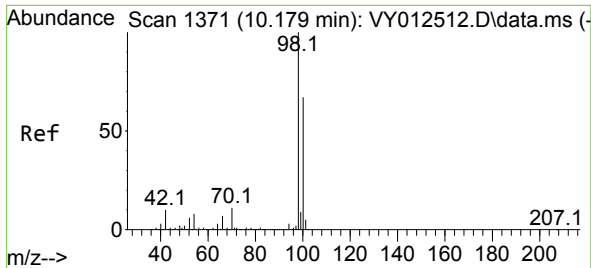
Tgt Ion: 43 Resp: 1469
 Ion Ratio Lower Upper
 43 100
 61 0.0 12.5 18.7#
 70 0.0 11.0 16.4#



#38
 Carbon Tetrachloride
 Concen: 4.280 ug/l
 RT: 7.789 min Scan# 979
 Delta R.T. -0.110 min
 Lab File: VY012526.D
 Acq: 07 Feb 2023 18:11

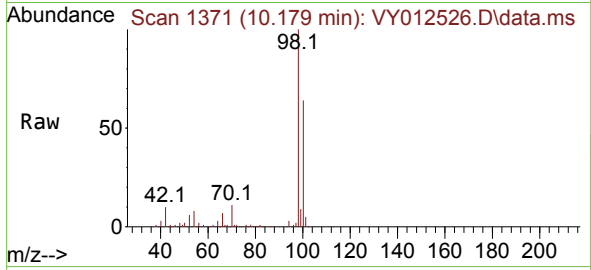
Tgt Ion: 117 Resp: 13270
 Ion Ratio Lower Upper
 117 100
 119 5.9 75.1 112.7#
 121 0.0 24.3 36.5#



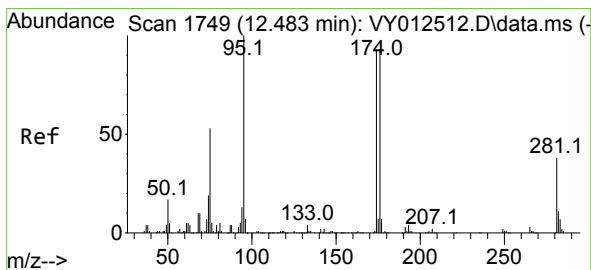
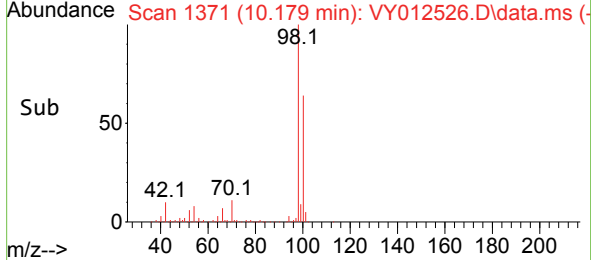
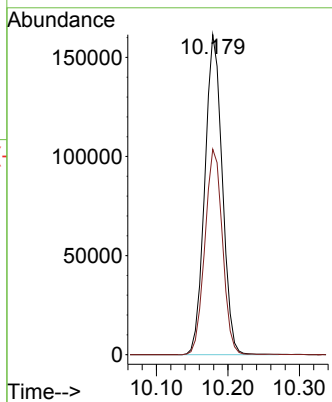


#50
 Toluene-d8
 Concen: 38.522 ug/l
 RT: 10.179 min Scan# 11
 Delta R.T. 0.000 min
 Lab File: VY012526.D
 Acq: 07 Feb 2023 18:11

Instrument :
 MSVOA_Y
 ClientSampleId :
 JPP-34-020323

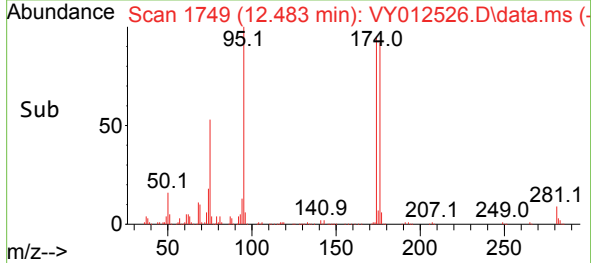
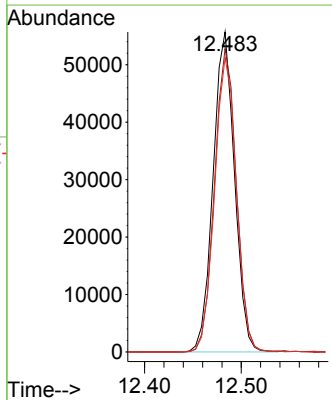
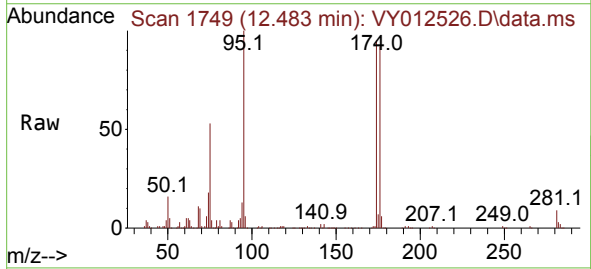


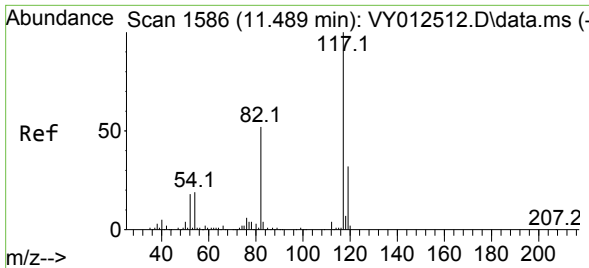
Tgt Ion: 98 Resp: 273627
 Ion Ratio Lower Upper
 98 100
 100 64.7 52.2 78.2



#62
 4-Bromofluorobenzene
 Concen: 34.624 ug/l
 RT: 12.483 min Scan# 1749
 Delta R.T. 0.000 min
 Lab File: VY012526.D
 Acq: 07 Feb 2023 18:11

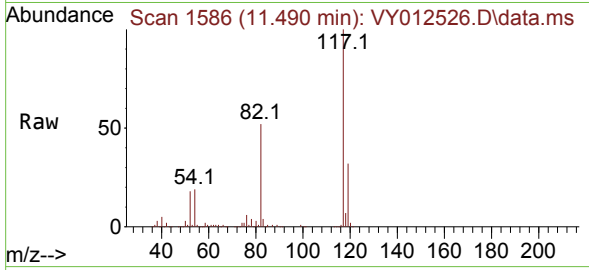
Tgt Ion: 95 Resp: 85783
 Ion Ratio Lower Upper
 95 100
 174 96.4 0.0 188.0
 176 93.8 0.0 183.6





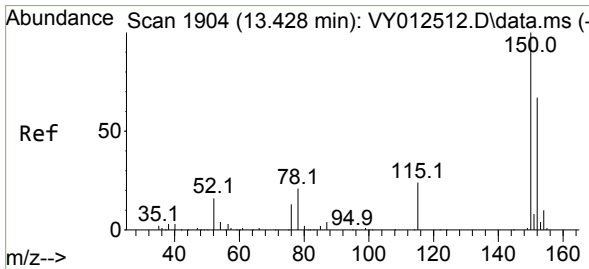
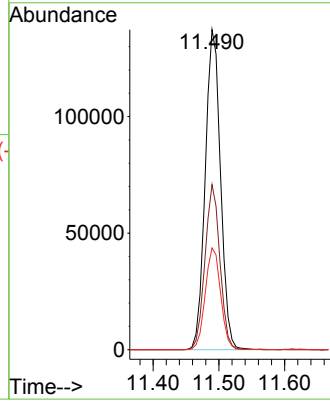
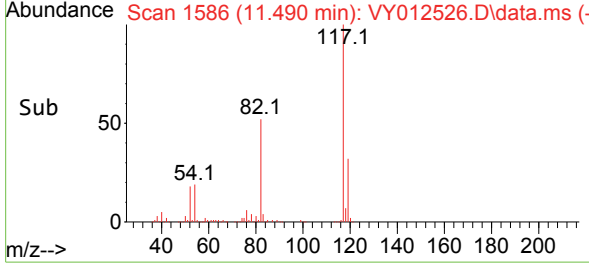
#63
 Chlorobenzene-d5
 Concen: 50.000 ug/l
 RT: 11.490 min Scan# 11
 Delta R.T. 0.000 min
 Lab File: VY012526.D
 Acq: 07 Feb 2023 18:11

Instrument : MSVOA_Y
 ClientSampleId : JPP-34-020323

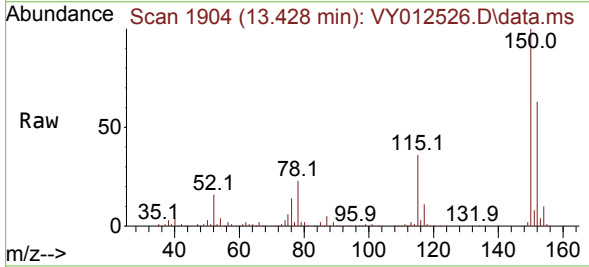


Tgt Ion:117 Resp: 222065

Ion	Ratio	Lower	Upper
117	100		
82	51.6	41.7	62.5
119	31.8	25.8	38.8

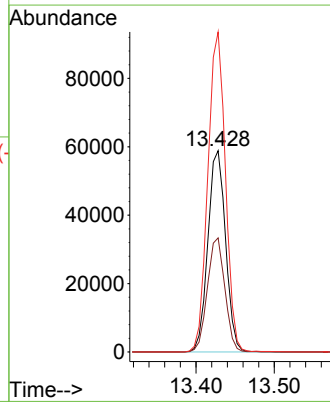
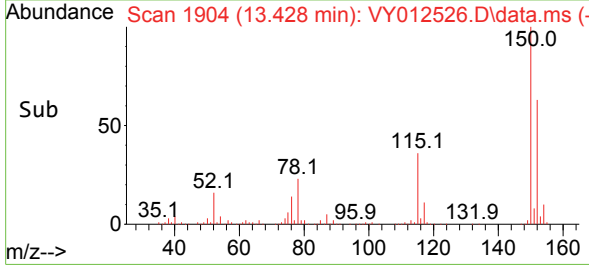


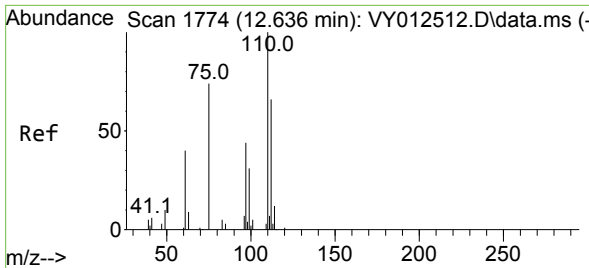
#72
 1,4-Dichlorobenzene-d4
 Concen: 50.000 ug/l
 RT: 13.428 min Scan# 1904
 Delta R.T. 0.000 min
 Lab File: VY012526.D
 Acq: 07 Feb 2023 18:11



Tgt Ion:152 Resp: 92259

Ion	Ratio	Lower	Upper
152	100		
115	56.1	28.1	84.3
150	158.1	0.0	351.0

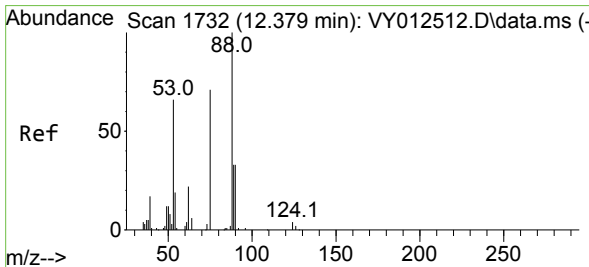
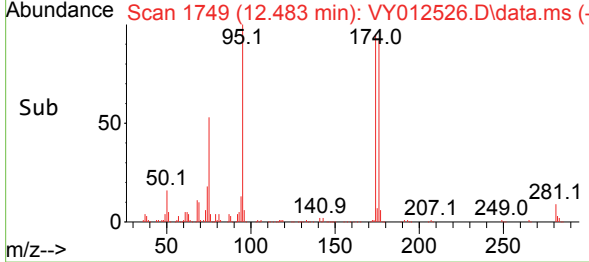
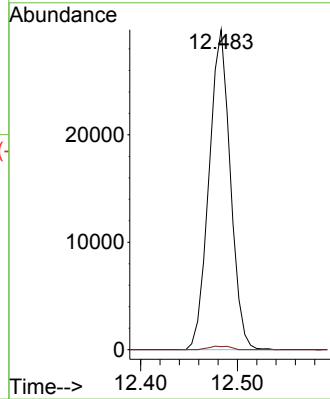
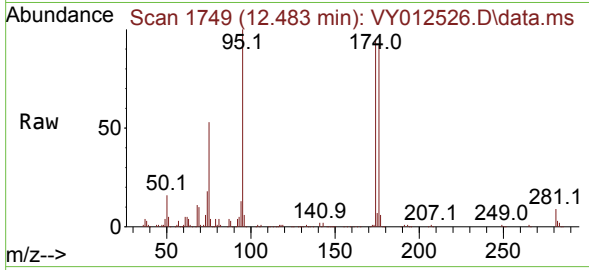




#76
 1,2,3-Trichloropropane
 Concen: 44.307 ug/l
 RT: 12.483 min Scan# 1749
 Delta R.T. -0.152 min
 Lab File: VY012526.D
 Acq: 07 Feb 2023 18:11

Instrument : MSVOA_Y
 ClientSampleId : JPP-34-020323

Tgt Ion: 75 Resp: 45669
 Ion Ratio Lower Upper
 75 100
 77 1.1 0.0 0.0#



#81
 trans-1,4-Dichloro-2-butene
 Concen: 99.914 ug/l
 RT: 12.483 min Scan# 1749
 Delta R.T. 0.104 min
 Lab File: VY012526.D
 Acq: 07 Feb 2023 18:11

Tgt Ion: 75 Resp: 45669
 Ion Ratio Lower Upper
 75 100
 53 0.0 73.1 109.7#
 89 0.1 39.9 59.9#

