

Data Path : Z:\voasrv\HPCHEM1\MSVOA_Y\Data\VY022124\
 Data File : VY017442.D
 Acq On : 21 Feb 2024 16:52
 Operator : SY/MD
 Sample : P1537-09
 Misc : 3.86g/5.0mL/MSVOA_Y/SOIL/A
 ALS Vial : 18 Sample Multiplier: 1

Instrument :
 MSVOA_Y
 ClientSampleId :
 9

Integration Parameters: RTEINT.P

Integrator: RTE
 Smoothing : ON Filtering: 5
 Sampling : 1 Min Area: 3 % of largest Peak
 Start Thrs: 0.2 Max Peaks: 100
 Stop Thrs : 0 Peak Location: TOP

If leading or trailing edge < 100 prefer < Baseline drop else tangent >
 Peak separation: 5

Method : Z:\voasrv\HPCHEM1\MSVOA_Y\methods\82Y021924S.M
 Title : SW846 8260

Signal : TIC: VY017442.D\data.ms

peak #	R.T. min	first scan	max scan	last scan	PK TY	peak height	corr. area	corr. % max.	% of total
1	4.728	466	477	494	rVB2	25472	79593	13.94%	2.675%
2	5.759	639	646	656	rVB5	2119	6552	1.15%	0.220%
3	7.728	959	969	975	rBV2	77536	182999	32.05%	6.150%
4	7.801	975	981	993	rVB	145401	325989	57.09%	10.956%
5	8.155	1028	1039	1049	rBV	63367	137072	24.01%	4.607%
6	8.697	1120	1128	1142	rBV	247228	495106	86.71%	16.640%
7	10.191	1364	1373	1387	rBV	291706	491754	86.12%	16.527%
8	11.502	1581	1588	1601	rBV	349049	570998	100.00%	19.190%
9	12.495	1743	1751	1760	rBV	167369	273660	47.93%	9.197%
10	13.434	1893	1905	1914	rBV	266332	405952	71.10%	13.643%
11	13.971	1988	1993	2000	rVB2	3712	5752	1.01%	0.193%

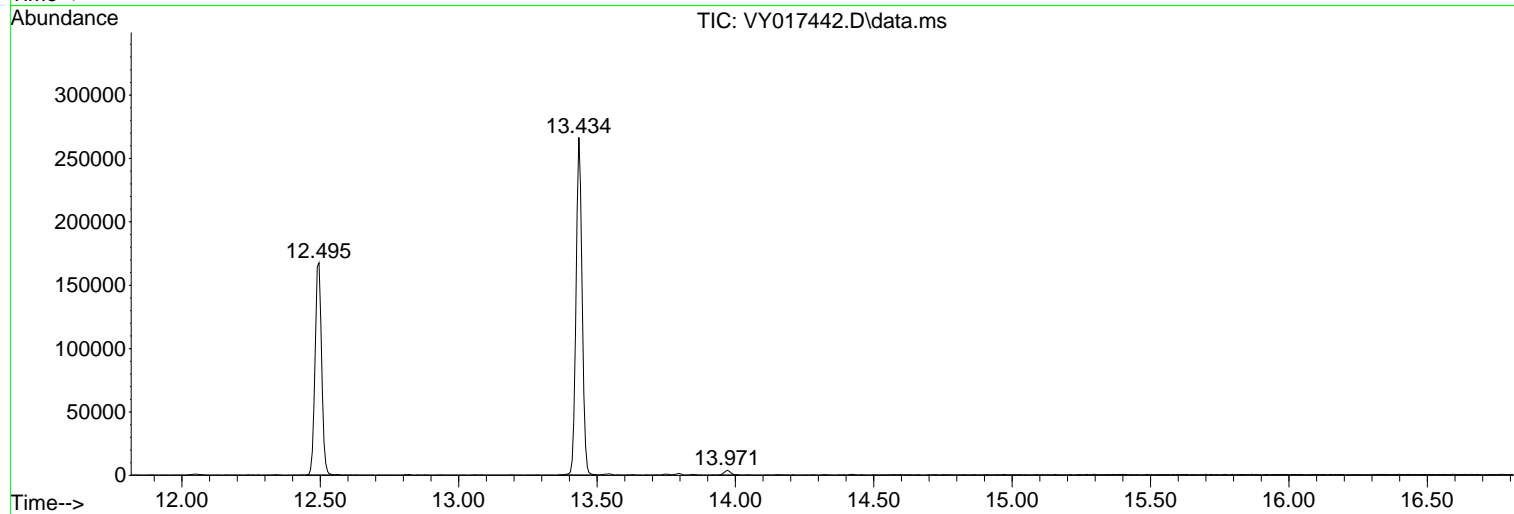
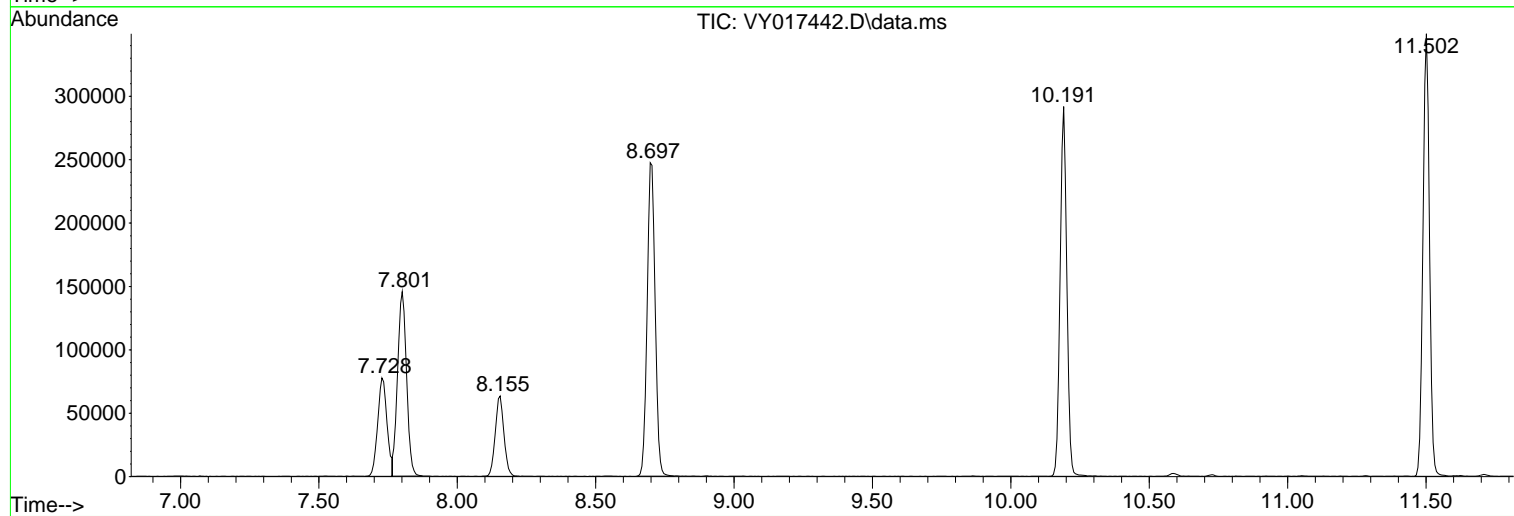
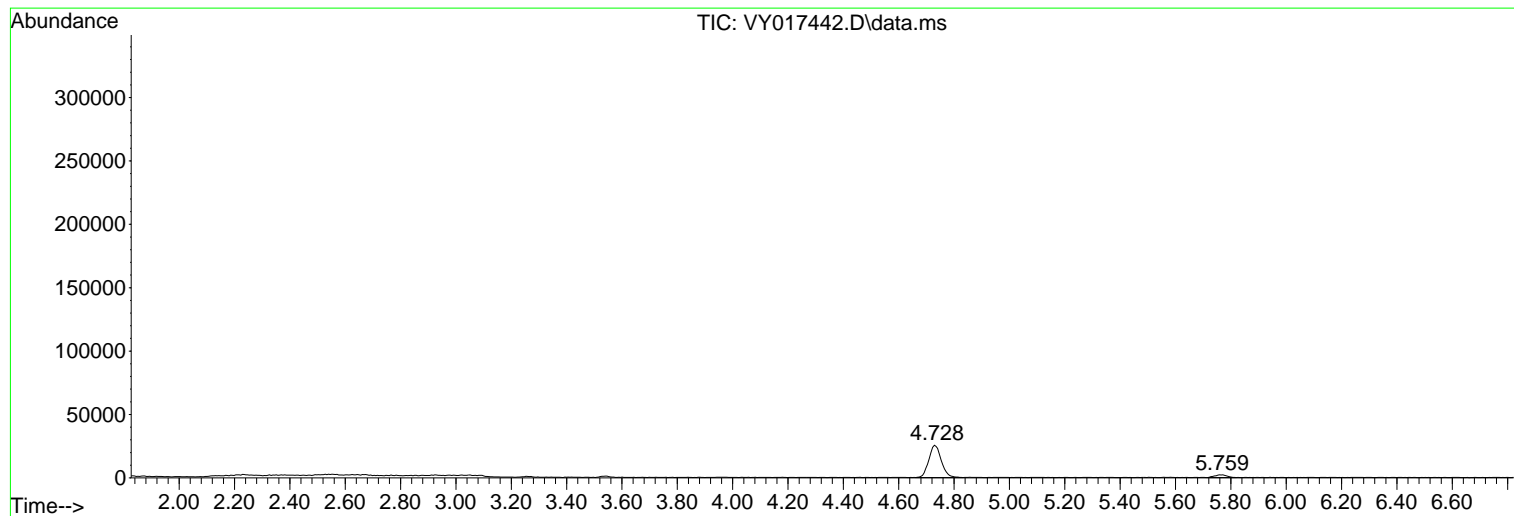
Sum of corrected areas: 2975427

Data Path : Z:\voasrv\HPCHEM1\MSVOA_Y\Data\VY022124\
Data File : VY017442.D
Acq On : 21 Feb 2024 16:52
Operator : SY/MD
Sample : P1537-09
Misc : 3.86g/5.0mL/MSVOA_Y/SOIL/A
ALS Vial : 18 Sample Multiplier: 1

Instrument :
MSVOA_Y
ClientSampleId :
9

Quant Method : Z:\voasrv\HPCHEM1\MSVOA_Y\methods\82Y021924S.M
Quant Title : SW846 8260

TIC Library : C:\Database\NIST0.L
TIC Integration Parameters: LSCINT.P



Library Search Compound Report

Data Path : Z:\voasrv\HPCHEM1\MSVOA_Y\Data\VY022124\
Data File : VY017442.D
Acq On : 21 Feb 2024 16:52
Operator : SY/MD
Sample : P1537-09
Misc : 3.86g/5.0mL/MSVOA_Y/SOIL/A
ALS Vial : 18 Sample Multiplier: 1

Instrument :
MSVOA_Y
ClientSampleId :
9

Quant Method : Z:\voasrv\HPCHEM1\MSVOA_Y\methods\82Y021924S.M
Quant Title : SW846 8260

TIC Library : C:\Database\NIST20.L
TIC Integration Parameters: LSCINT.P

No Library Search Compounds Detected

Data Path : Z:\voasrv\HPCHEM1\MSVOA_Y\Data\VY022124\
Data File : VY017442.D
Acq On : 21 Feb 2024 16:52
Operator : SY/MD
Sample : P1537-09
Misc : 3.86g/5.0mL/MSVOA_Y/SOIL/A
ALS Vial : 18 Sample Multiplier: 1

Instrument :
MSVOA_Y
ClientSampleId :
9

Quant Method : Z:\voasrv\HPCHEM1\MSVOA_Y\methods\82Y021924S.M
Quant Title : SW846 8260

TIC Library : C:\Database\NIST0.L
TIC Integration Parameters: LSCINT.P

TIC Top Hit name	RT	EstConc	Units	Response	--Internal Standard--			
					#	RT	Resp	Conc
