

Data Path : Z:\voasrv\HPCHEM1\MSVOA_Y\Data\VY022124\
 Data File : VY017446.D
 Acq On : 21 Feb 2024 18:26
 Operator : SY/MD
 Sample : P1537-13
 Misc : 4.31g/5.0mL/MSVOA_Y/SOIL/A
 ALS Vial : 22 Sample Multiplier: 1

Instrument :
 MSVOA_Y
 ClientSampleId :
 13

Integration Parameters: RTEINT.P

Integrator: RTE
 Smoothing : ON Filtering: 5
 Sampling : 1 Min Area: 3 % of largest Peak
 Start Thrs: 0.2 Max Peaks: 100
 Stop Thrs : 0 Peak Location: TOP

If leading or trailing edge < 100 prefer < Baseline drop else tangent >
 Peak separation: 5

Method : Z:\voasrv\HPCHEM1\MSVOA_Y\methods\82Y021924S.M
 Title : SW846 8260

Signal : TIC: VY017446.D\data.ms

peak #	R.T. min	first scan	max scan	last scan	PK TY	peak height	corr. area	corr. % max.	% of total
1	2.217	61	65	77	rVB4	2628	7023	1.25%	0.227%
2	2.692	136	143	150	rVB	11544	23205	4.14%	0.749%
3	3.954	340	350	359	rBV	10523	28371	5.07%	0.916%
4	4.722	464	476	491	rVB	27679	88201	15.75%	2.849%
5	5.753	635	645	654	rVB5	3246	9687	1.73%	0.313%
6	6.996	840	849	858	rBV4	3815	11183	2.00%	0.361%
7	7.722	957	968	974	rBV	76055	184913	33.03%	5.972%
8	7.795	974	980	997	rVB	153462	341292	60.96%	11.022%
9	8.149	1028	1038	1049	rBV	64160	144446	25.80%	4.665%
10	8.691	1119	1127	1139	rBV	250831	495001	88.41%	15.987%
11	10.185	1364	1372	1378	rBV	291383	485146	86.65%	15.668%
12	10.252	1378	1383	1392	rVB	18936	32884	5.87%	1.062%
13	11.495	1579	1587	1599	rBV	344149	559901	100.00%	18.083%
14	12.489	1743	1750	1763	rBV2	174136	280397	50.08%	9.056%
15	13.434	1898	1905	1914	rVB	255432	395326	70.61%	12.767%
16	13.971	1986	1993	1998	rVB2	5769	9390	1.68%	0.303%

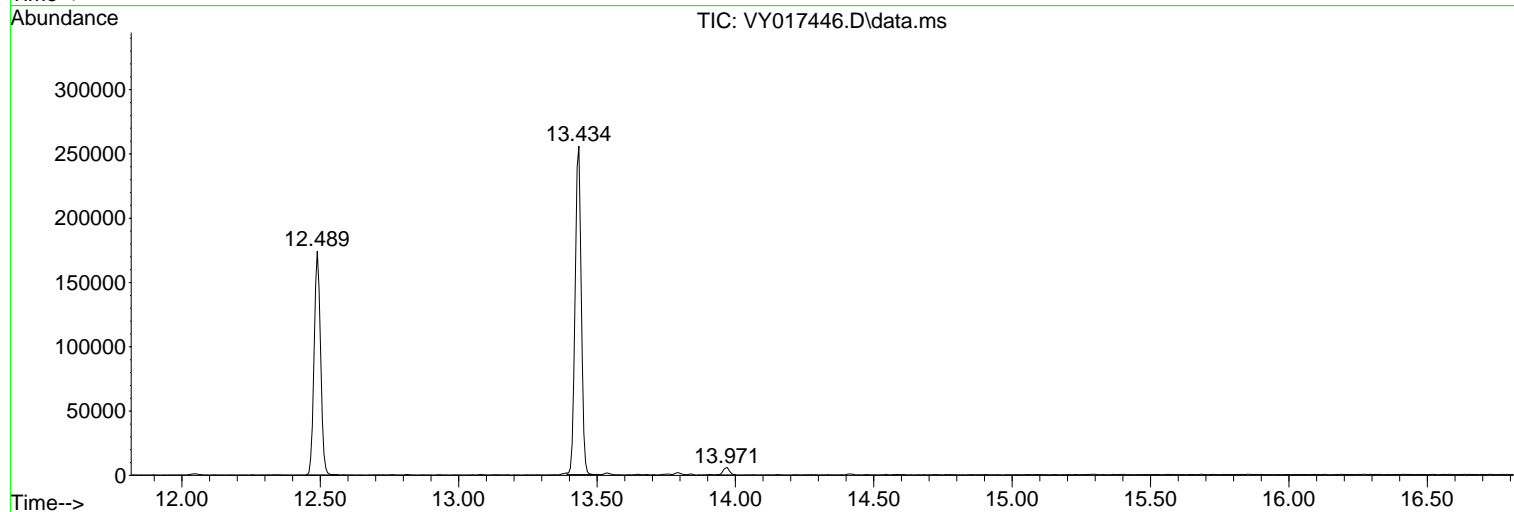
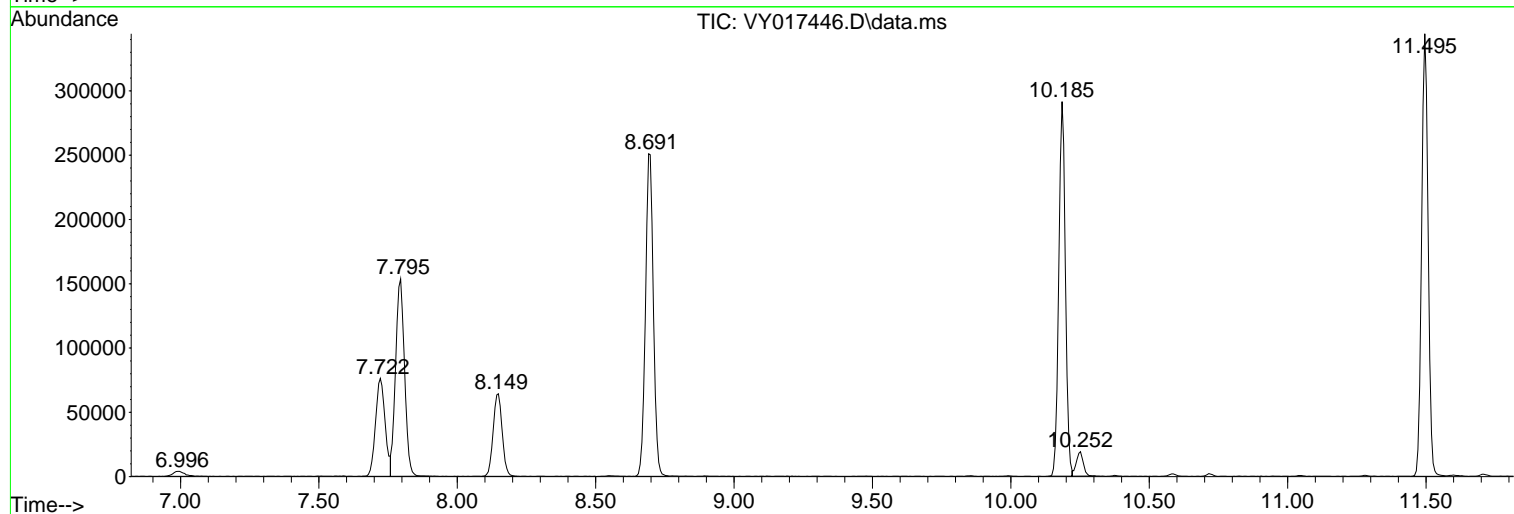
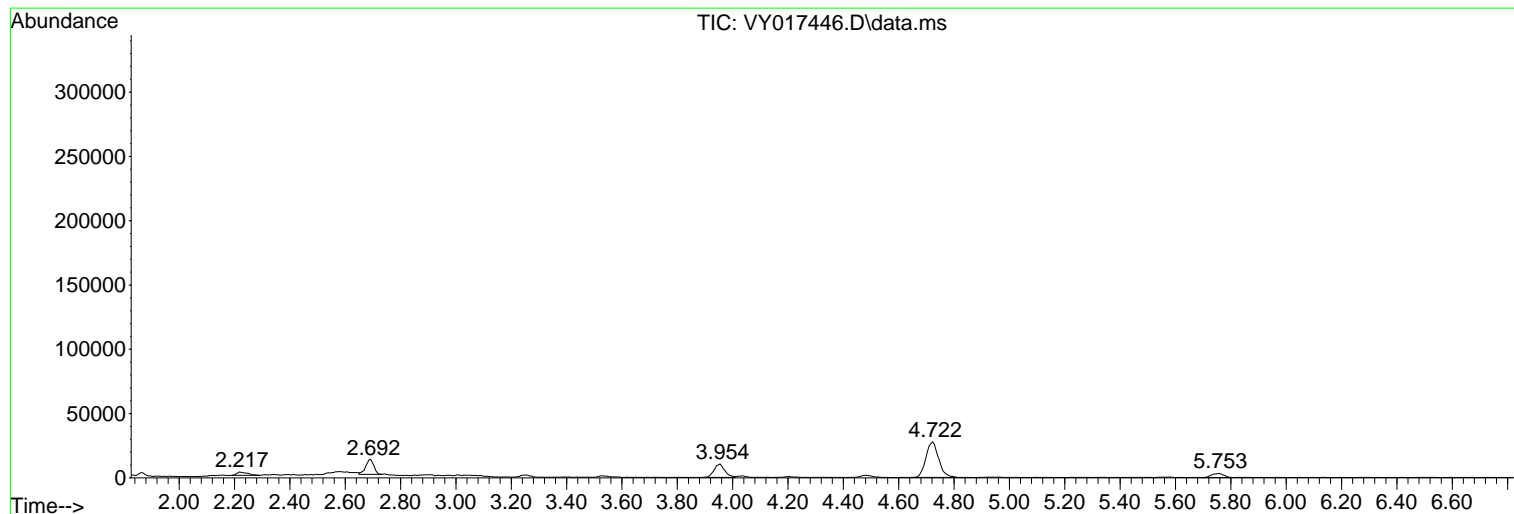
Sum of corrected areas: 3096366

Data Path : Z:\voasrv\HPCHEM1\MSVOA_Y\Data\VY022124\
Data File : VY017446.D
Acq On : 21 Feb 2024 18:26
Operator : SY/MD
Sample : P1537-13
Misc : 4.31g/5.0mL/MSVOA_Y/SOIL/A
ALS Vial : 22 Sample Multiplier: 1

Instrument :
MSVOA_Y
ClientSampleId :
13

Quant Method : Z:\voasrv\HPCHEM1\MSVOA_Y\methods\82Y021924S.M
Quant Title : SW846 8260

TIC Library : C:\Database\NIST20.L
TIC Integration Parameters: LSCINT.P



Library Search Compound Report

Data Path : Z:\voasrv\HPCHEM1\MSVOA_Y\Data\VY022124\
Data File : VY017446.D
Acq On : 21 Feb 2024 18:26
Operator : SY/MD
Sample : P1537-13
Misc : 4.31g/5.0mL/MSVOA_Y/SOIL/A
ALS Vial : 22 Sample Multiplier: 1

Instrument :
MSVOA_Y
ClientSampleId :
13

Quant Method : Z:\voasrv\HPCHEM1\MSVOA_Y\methods\82Y021924S.M
Quant Title : SW846 8260

TIC Library : C:\Database\NIST20.L
TIC Integration Parameters: LSCINT.P

No Library Search Compounds Detected

Data Path : Z:\voasrv\HPCHEM1\MSVOA_Y\Data\VY022124\
Data File : VY017446.D
Acq On : 21 Feb 2024 18:26
Operator : SY/MD
Sample : P1537-13
Misc : 4.31g/5.0mL/MSVOA_Y/SOIL/A
ALS Vial : 22 Sample Multiplier: 1

Instrument :
MSVOA_Y
ClientSampleId :
13

Quant Method : Z:\voasrv\HPCHEM1\MSVOA_Y\methods\82Y021924S.M
Quant Title : SW846 8260

TIC Library : C:\Database\NIST0.L
TIC Integration Parameters: LSCINT.P

TIC Top Hit name	RT	EstConc	Units	Response	--Internal Standard--		
					#	RT	Resp Conc
