

Data Path : Z:\voasrv\HPCHEM1\MSVOA\_Y\Data\VY030323\  
 Data File : VY012801.D  
 Acq On : 03 Mar 2023 17:12  
 Operator : KP/MD  
 Sample : 01749-07  
 Misc : 7.06g/5.0mL/MSVOA\_Y/SOIL  
 ALS Vial : 19 Sample Multiplier: 1

Instrument :  
 MSVOA\_Y  
 ClientSampleId :  
 CF-9

Quant Time: Mar 04 01:25:39 2023  
 Quant Method : Z:\voasrv\HPCHEM1\MSVOA\_Y\methods\82Y030223S.M  
 Quant Title : SW846 8260  
 QLast Update : Fri Mar 03 01:13:13 2023  
 Response via : Initial Calibration

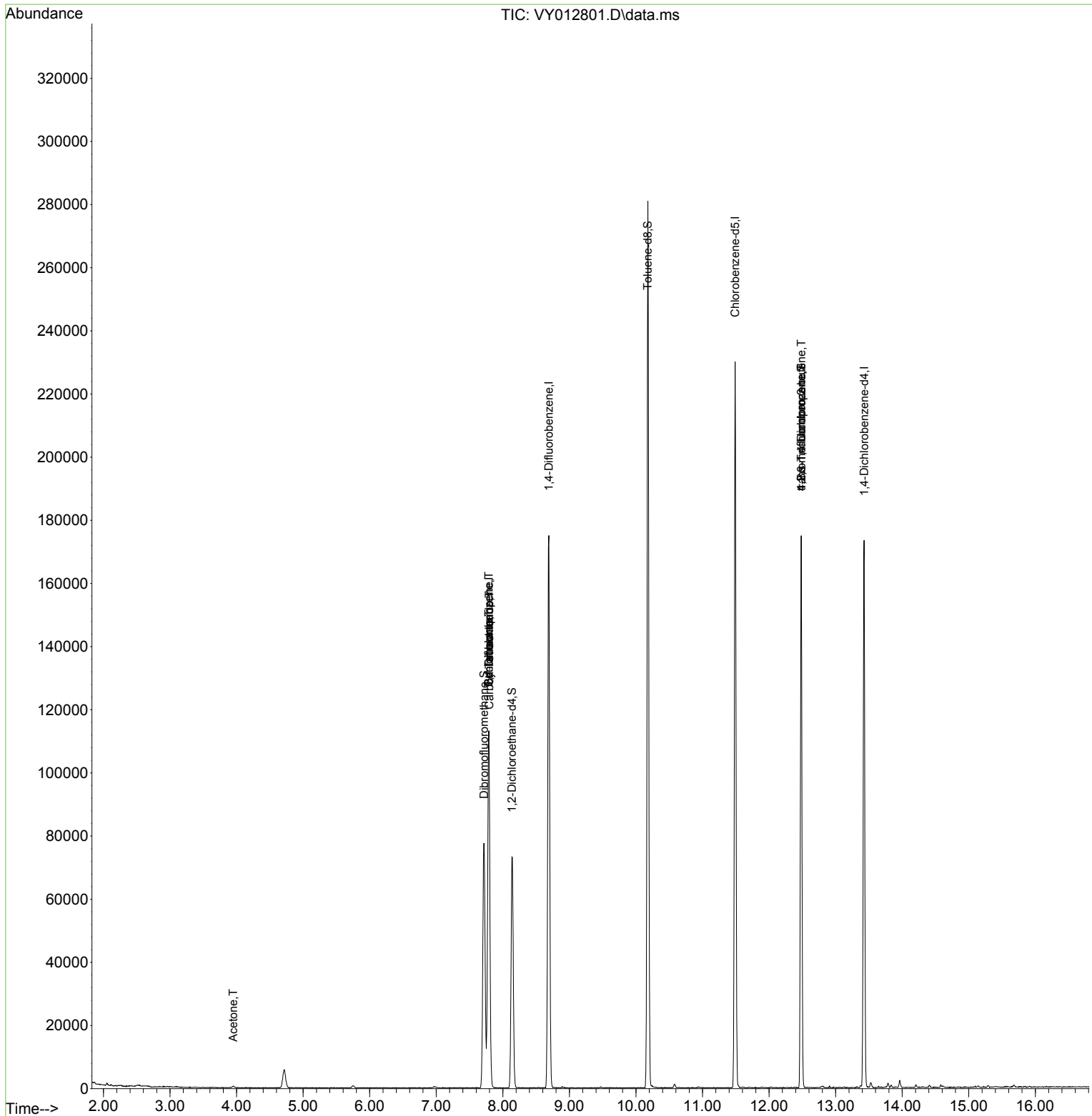
Compound	R.T.	QIon	Response	Conc	Units	Dev(Min)
-----						
Internal Standards						
1) Pentafluorobenzene	7.789	168	91406	50.000	ug/l	0.00
34) 1,4-Difluorobenzene	8.691	114	148213	50.000	ug/l	0.00
63) Chlorobenzene-d5	11.489	117	120823	50.000	ug/l	0.00
72) 1,4-Dichlorobenzene-d4	13.428	152	45551	50.000	ug/l	0.00
System Monitoring Compounds						
33) 1,2-Dichloroethane-d4	8.136	65	58357	64.302	ug/l	0.00
Spiked Amount	50.000	Range	50 - 163	Recovery	=	128.600%
35) Dibromofluoromethane	7.716	113	54769	61.231	ug/l	0.00
Spiked Amount	50.000	Range	54 - 147	Recovery	=	122.460%
50) Toluene-d8	10.179	98	178077	54.458	ug/l	0.00
Spiked Amount	50.000	Range	49 - 140	Recovery	=	108.920%
62) 4-Bromofluorobenzene	12.483	95	48697	44.122	ug/l	0.00
Spiked Amount	50.000	Range	25 - 144	Recovery	=	88.240%
Target Compounds						
					Qvalue	
16) Acetone	3.948	43	962	2.701	ug/l	93
20) Methylene Chloride	4.716	84	4288	Below Cal		95
31) Cyclohexane	7.789	56	1996	1.148	ug/l #	1
36) 1,1-Dichloropropene	7.789	75	6778	4.522	ug/l #	50
38) Carbon Tetrachloride	7.795	117	8737	5.644	ug/l #	16
76) 1,2,3-Trichloropropane	12.483	75	26137	48.050	ug/l #	100
81) trans-1,4-Dichloro-2-b...	12.483	75	26137	99.562	ug/l #	13

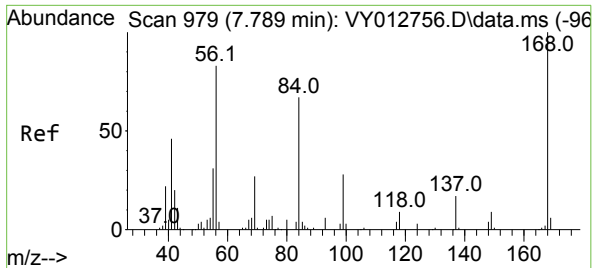
(#) = qualifier out of range (m) = manual integration (+) = signals summed

Data Path : Z:\voasrv\HPCHEM1\MSVOA\_Y\Data\VY030323\  
 Data File : VY012801.D  
 Acq On : 03 Mar 2023 17:12  
 Operator : KP/MD  
 Sample : 01749-07  
 Misc : 7.06g/5.0mL/MSVOA\_Y/SOIL  
 ALS Vial : 19 Sample Multiplier: 1

Instrument :  
 MSVOA\_Y  
 ClientSampleId :  
 CF-9

Quant Time: Mar 04 01:25:39 2023  
 Quant Method : Z:\voasrv\HPCHEM1\MSVOA\_Y\methods\82Y030223S.M  
 Quant Title : SW846 8260  
 QLast Update : Fri Mar 03 01:13:13 2023  
 Response via : Initial Calibration

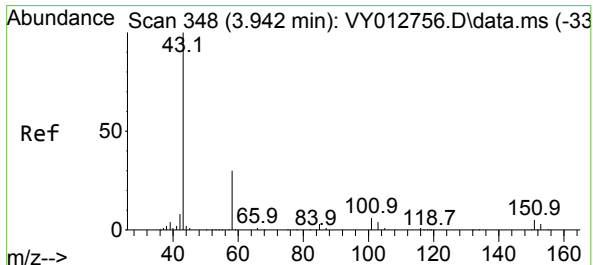
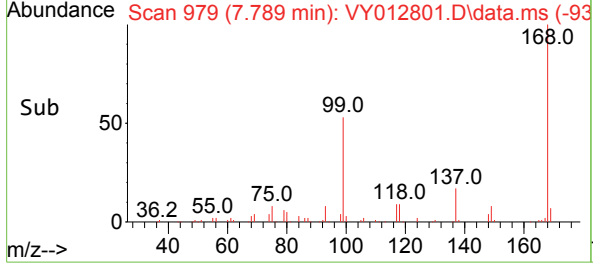
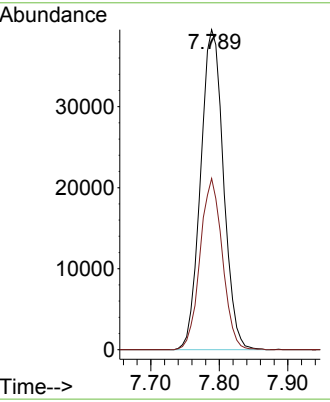
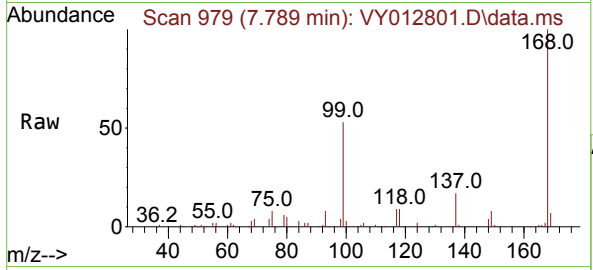




#1  
 Pentafluorobenzene  
 Concen: 50.000 ug/l  
 RT: 7.789 min Scan# 91  
 Delta R.T. -0.000 min  
 Lab File: VY012801.D  
 Acq: 03 Mar 2023 17:12

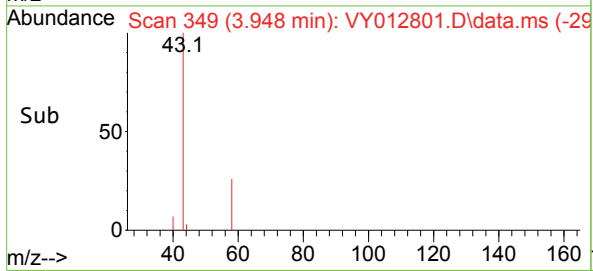
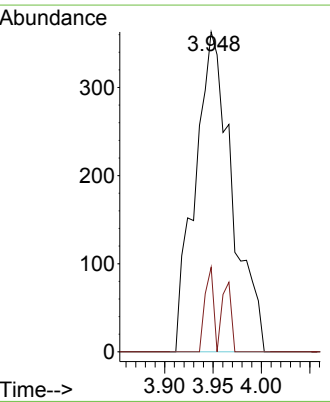
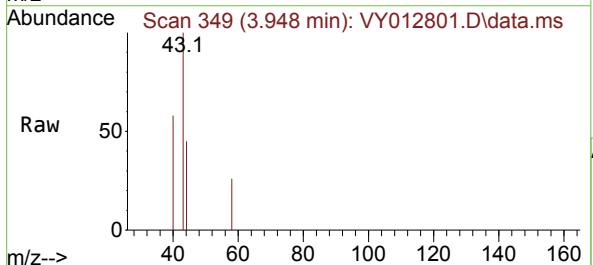
Instrument : MSVOA\_Y  
 ClientSampleId : CF-9

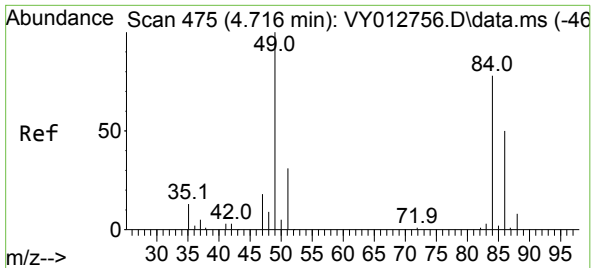
Tgt Ion:168 Resp: 91406  
 Ion Ratio Lower Upper  
 168 100  
 99 53.5 41.7 62.5



#16  
 Acetone  
 Concen: 2.701 ug/l  
 RT: 3.948 min Scan# 349  
 Delta R.T. 0.006 min  
 Lab File: VY012801.D  
 Acq: 03 Mar 2023 17:12

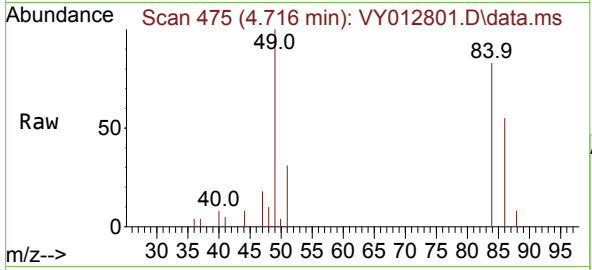
Tgt Ion: 43 Resp: 962  
 Ion Ratio Lower Upper  
 43 100  
 58 26.4 24.2 36.2





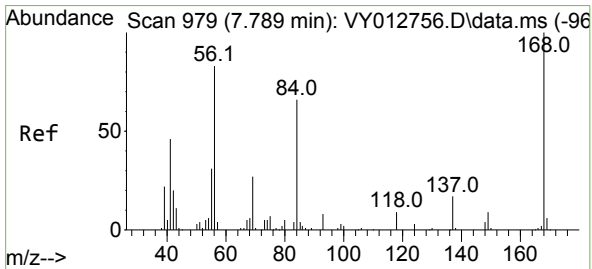
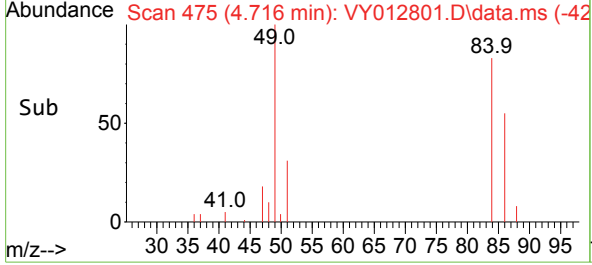
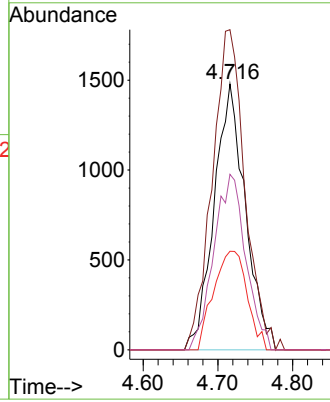
#20  
Methylene Chloride  
Concen: Below Cal  
RT: 4.716 min Scan# 41  
Delta R.T. 0.000 min  
Lab File: VY012801.D  
Acq: 03 Mar 2023 17:12

Instrument :  
MSVOA\_Y  
ClientSampleId :  
CF-9



Tgt Ion: 84 Resp: 4288

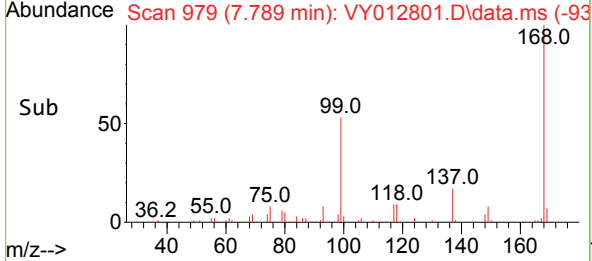
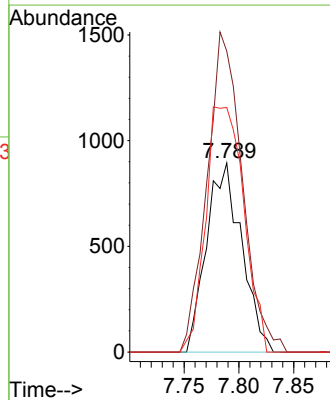
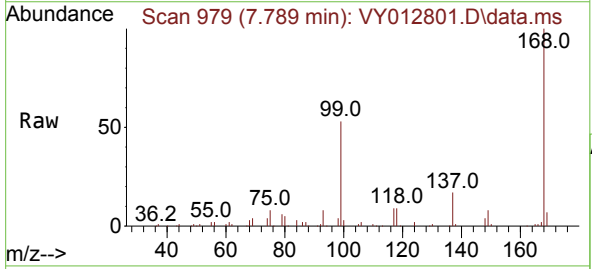
Ion	Ratio	Lower	Upper
84	100		
49	120.4	102.6	154.0
51	37.1	31.9	47.9
86	66.0	51.0	76.6

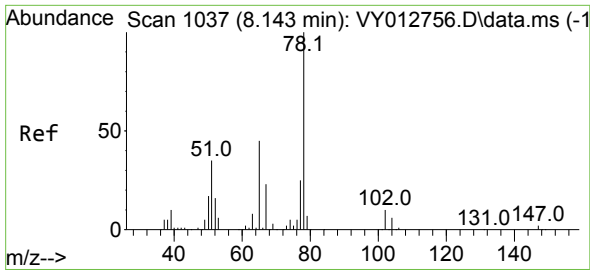


#31  
Cyclohexane  
Concen: 1.148 ug/l  
RT: 7.789 min Scan# 979  
Delta R.T. -0.000 min  
Lab File: VY012801.D  
Acq: 03 Mar 2023 17:12

Tgt Ion: 56 Resp: 1996

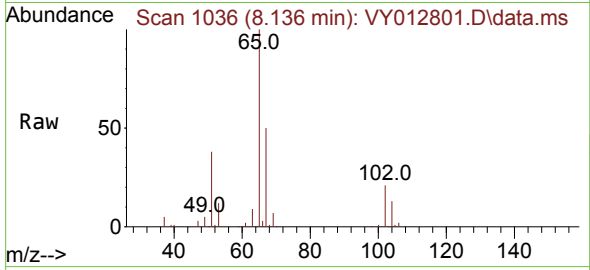
Ion	Ratio	Lower	Upper
56	100		
69	159.2	25.7	38.5#
84	129.4	64.3	96.5#



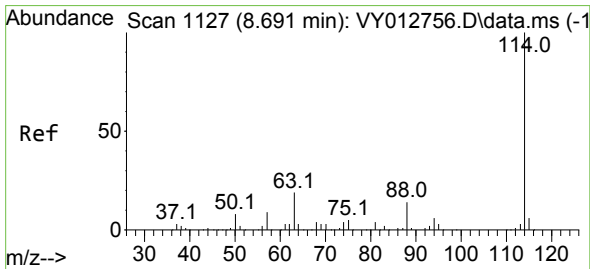
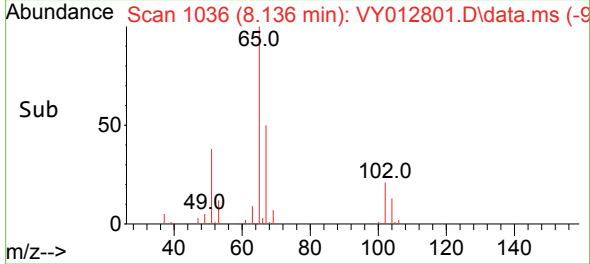
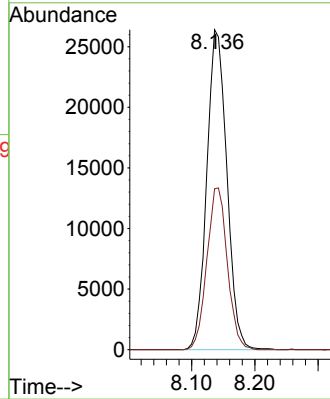


#33  
 1,2-Dichloroethane-d4  
 Concen: 64.302 ug/l  
 RT: 8.136 min Scan# 1036  
 Delta R.T. -0.007 min  
 Lab File: VY012801.D  
 Acq: 03 Mar 2023 17:12

Instrument : MSVOA\_Y  
 ClientSampleId : CF-9

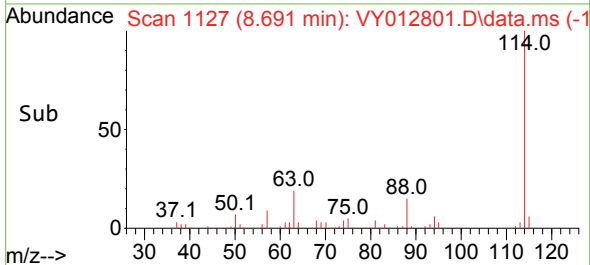
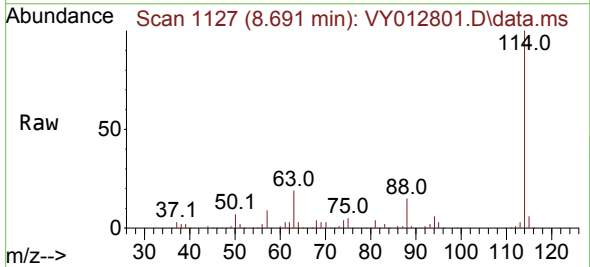
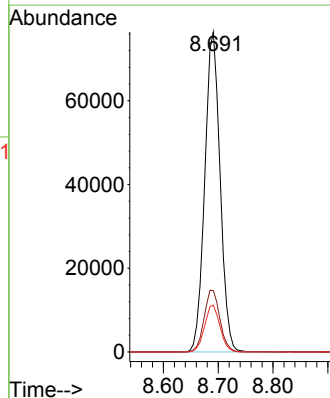


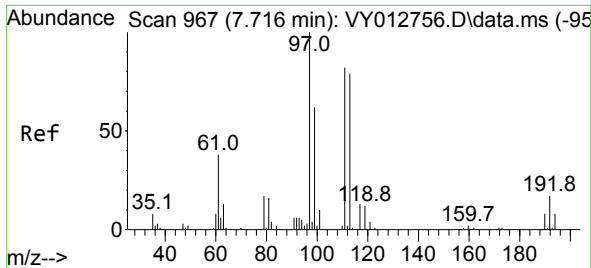
Tgt Ion: 65 Resp: 58357  
 Ion Ratio Lower Upper  
 65 100  
 67 51.5 0.0 104.0



#34  
 1,4-Difluorobenzene  
 Concen: 50.000 ug/l  
 RT: 8.691 min Scan# 1127  
 Delta R.T. -0.000 min  
 Lab File: VY012801.D  
 Acq: 03 Mar 2023 17:12

Tgt Ion: 114 Resp: 148213  
 Ion Ratio Lower Upper  
 114 100  
 63 19.2 0.0 37.4  
 88 14.6 0.0 28.6

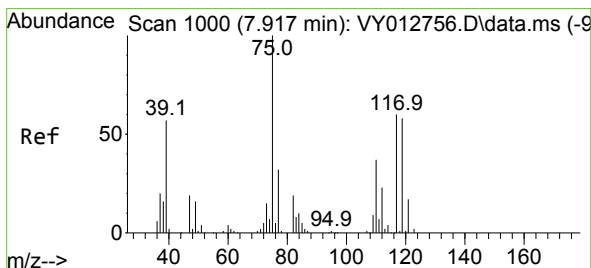
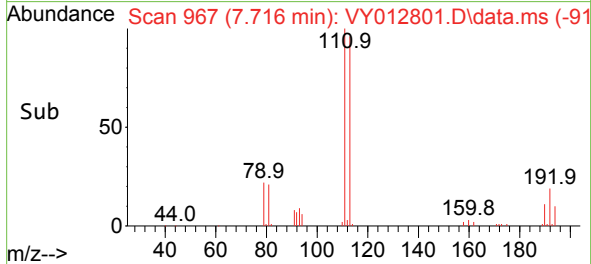
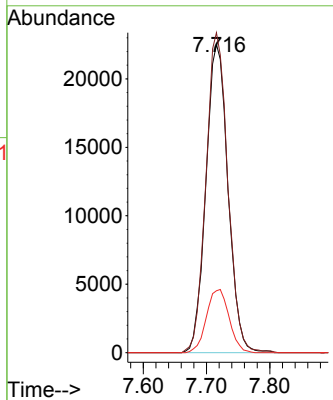
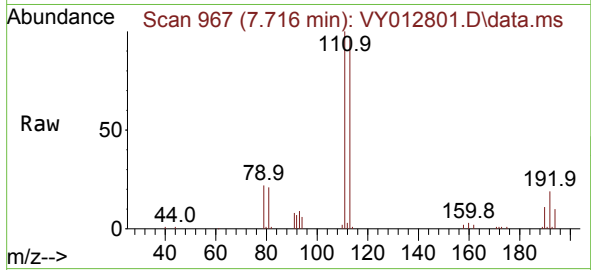




#35  
 Dibromofluoromethane  
 Concen: 61.231 ug/l  
 RT: 7.716 min Scan# 909  
 Delta R.T. -0.000 min  
 Lab File: VY012801.D  
 Acq: 03 Mar 2023 17:12

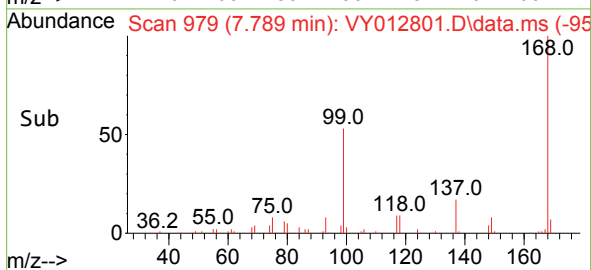
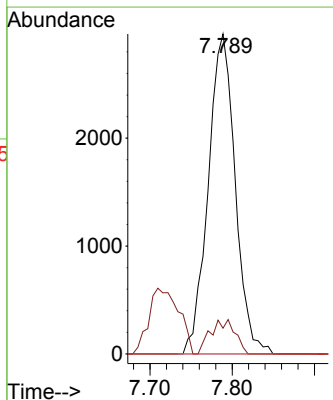
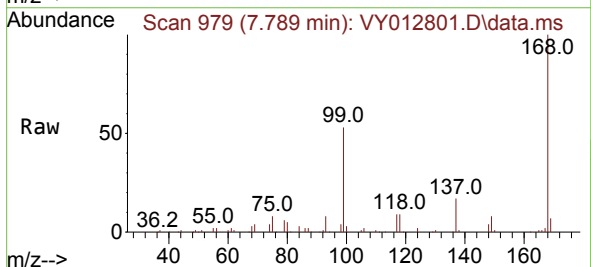
Instrument : MSVOA\_Y  
 ClientSampleId : CF-9

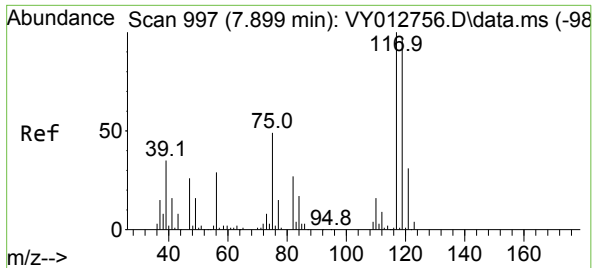
Tgt Ion	Resp	Lower	Upper
113	54769		
113	100		
111	102.7	82.2	123.2
192	21.0	16.8	25.2



#36  
 1,1-Dichloropropene  
 Concen: 4.522 ug/l  
 RT: 7.789 min Scan# 979  
 Delta R.T. -0.128 min  
 Lab File: VY012801.D  
 Acq: 03 Mar 2023 17:12

Tgt Ion	Resp	Lower	Upper
75	6778		
75	100		
110	9.8	17.8	53.3#
77	0.0	25.0	37.4#

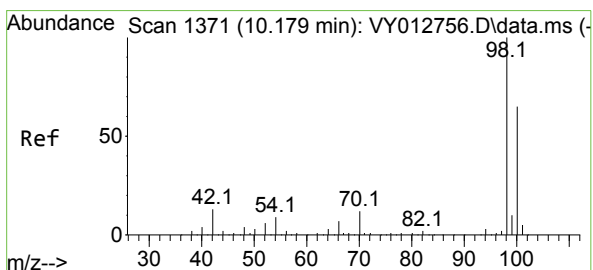
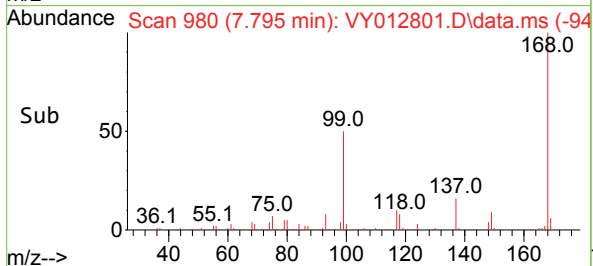
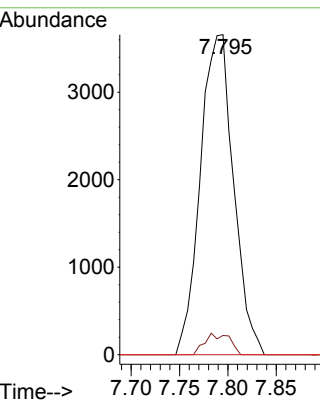
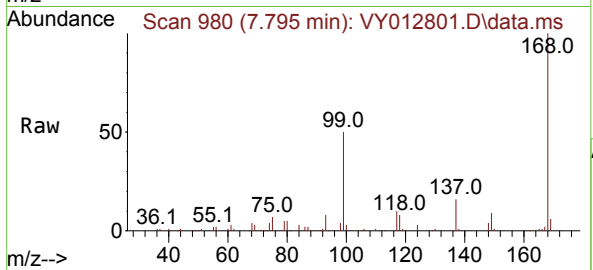




#38  
 Carbon Tetrachloride  
 Concen: 5.644 ug/l  
 RT: 7.795 min Scan# 91  
 Delta R.T. -0.104 min  
 Lab File: VY012801.D  
 Acq: 03 Mar 2023 17:12

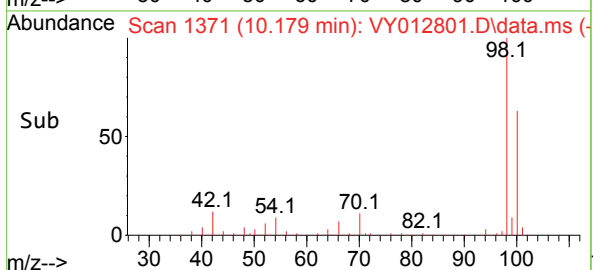
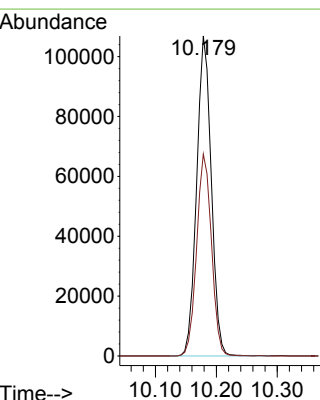
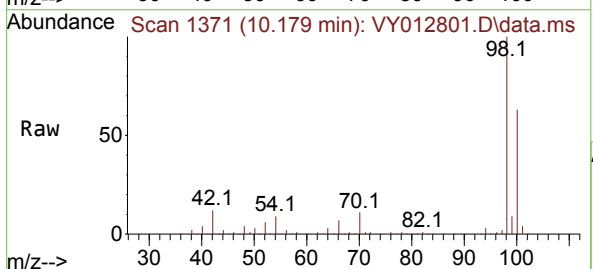
Instrument : MSVOA\_Y  
 ClientSampleId : CF-9

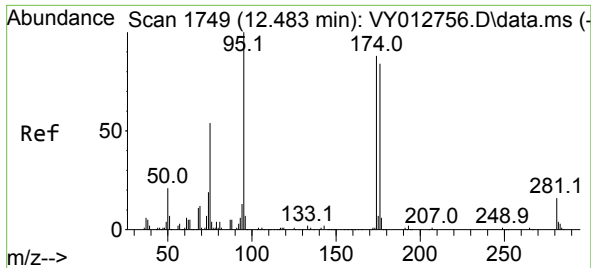
Tgt Ion:117 Resp: 8737  
 Ion Ratio Lower Upper  
 117 100  
 119 6.0 77.2 115.8#  
 121 0.0 24.7 37.1#



#50  
 Toluene-d8  
 Concen: 54.458 ug/l  
 RT: 10.179 min Scan# 1371  
 Delta R.T. -0.000 min  
 Lab File: VY012801.D  
 Acq: 03 Mar 2023 17:12

Tgt Ion: 98 Resp: 178077  
 Ion Ratio Lower Upper  
 98 100  
 100 64.0 50.9 76.3



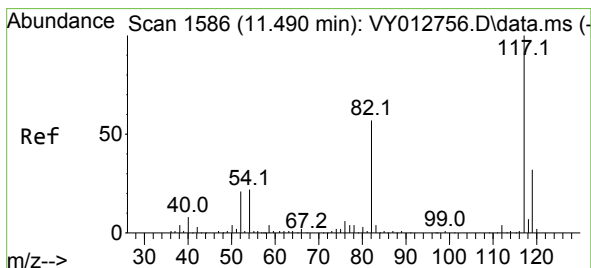
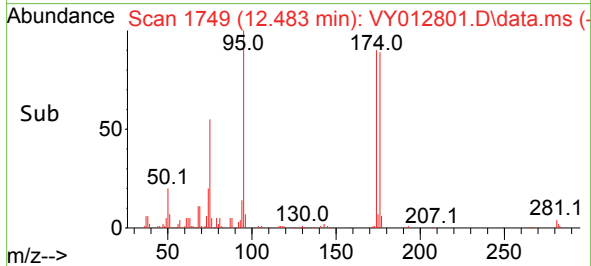
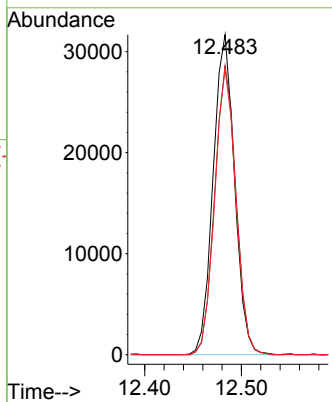
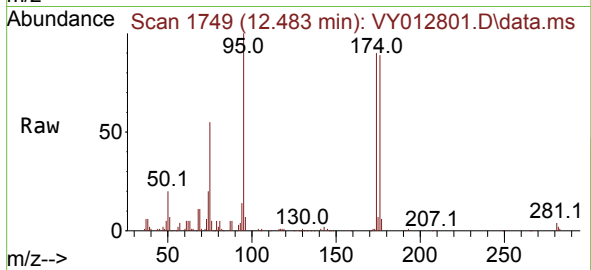


#62  
 4-Bromofluorobenzene  
 Concen: 44.122 ug/l  
 RT: 12.483 min Scan# 1749  
 Delta R.T. -0.000 min  
 Lab File: VY012801.D  
 Acq: 03 Mar 2023 17:12

Instrument : MSVOA\_Y  
 ClientSampleId : CF-9

Tgt Ion: 95 Resp: 48697

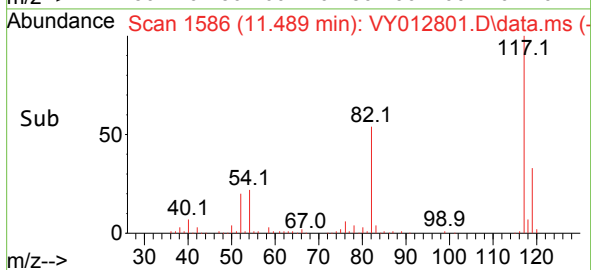
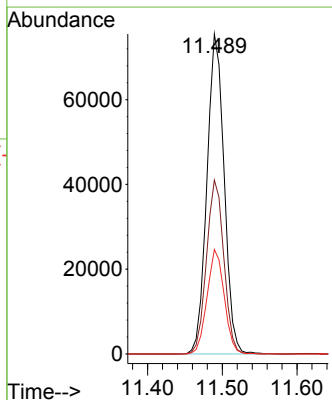
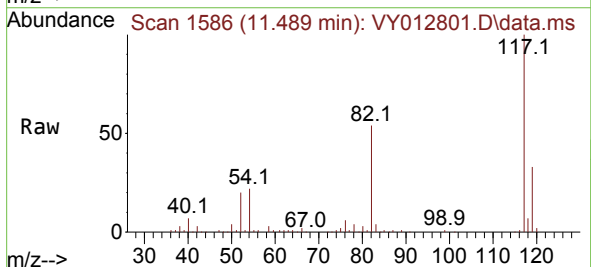
Ion	Ratio	Lower	Upper
95	100		
174	90.1	0.0	176.6
176	88.3	0.0	170.2



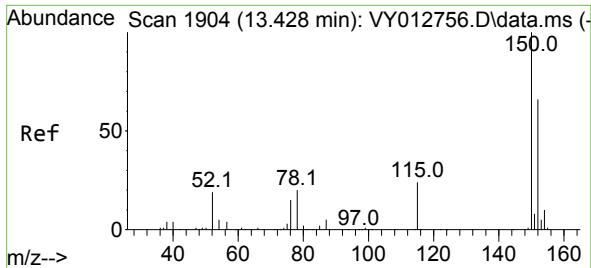
#63  
 Chlorobenzene-d5  
 Concen: 50.000 ug/l  
 RT: 11.489 min Scan# 1586  
 Delta R.T. -0.000 min  
 Lab File: VY012801.D  
 Acq: 03 Mar 2023 17:12

Tgt Ion: 117 Resp: 120823

Ion	Ratio	Lower	Upper
117	100		
82	54.4	45.4	68.0
119	32.6	25.6	38.4

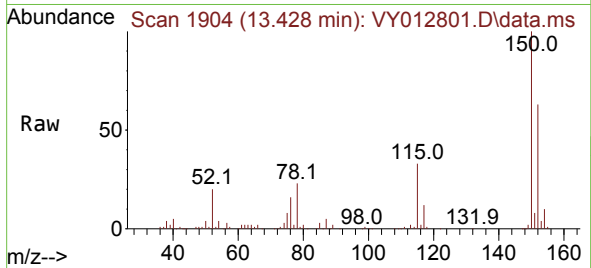




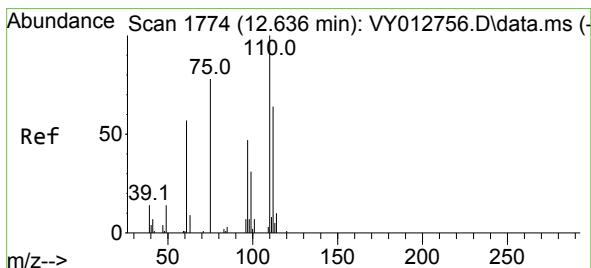
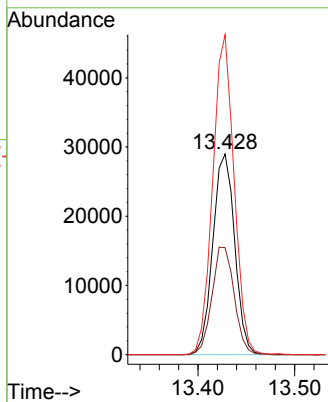
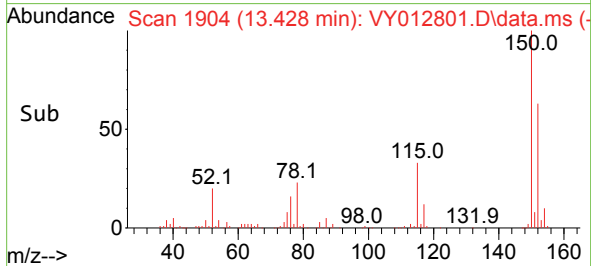


#72  
 1,4-Dichlorobenzene-d4  
 Concen: 50.000 ug/l  
 RT: 13.428 min Scan# 1904  
 Delta R.T. -0.000 min  
 Lab File: VY012801.D  
 Acq: 03 Mar 2023 17:12

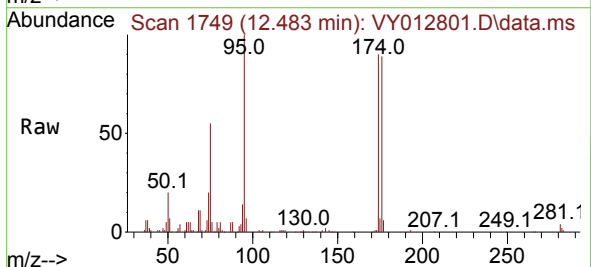
Instrument : MSVOA\_Y  
 ClientSampleId : CF-9



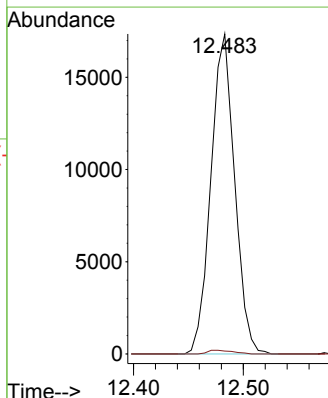
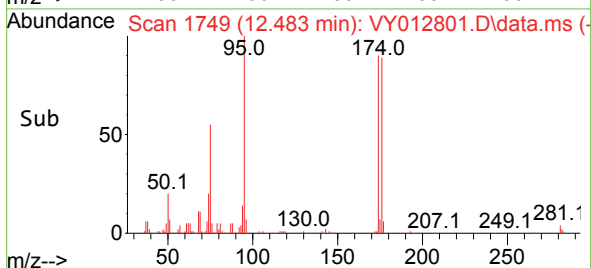
Tgt Ion:152 Resp: 45551  
 Ion Ratio Lower Upper  
 152 100  
 115 54.5 27.1 81.3  
 150 155.7 0.0 347.8

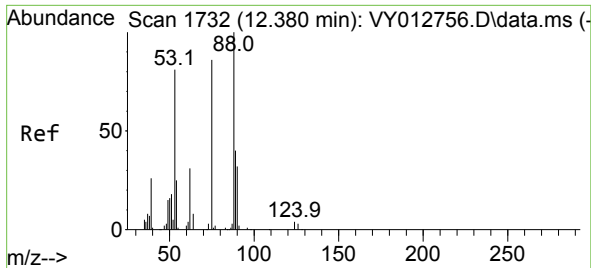


#76  
 1,2,3-Trichloropropane  
 Concen: 48.050 ug/l  
 RT: 12.483 min Scan# 1749  
 Delta R.T. -0.153 min  
 Lab File: VY012801.D  
 Acq: 03 Mar 2023 17:12



Tgt Ion: 75 Resp: 26137  
 Ion Ratio Lower Upper  
 75 100  
 77 1.2 0.0 0.0#





#81  
 trans-1,4-Dichloro-2-butene  
 Concen: 99.562 ug/l  
 RT: 12.483 min Scan# 1  
 Delta R.T. 0.103 min  
 Lab File: VY012801.D  
 Acq: 03 Mar 2023 17:12

Instrument :  
 MSVOA\_Y  
 ClientSampleId :  
 CF-9

Tgt Ion: 75 Resp: 26137  
 Ion Ratio Lower Upper  
 75 100  
 53 0.0 73.4 110.0#  
 89 0.0 36.6 55.0#

