

Data Path : Z:\VOASRV\HPCHEM1\MSVOA Y\DATA\VY030520\  
 Data File : VY001877.D  
 Acq On : 05 Mar 2020 13:28  
 Operator : SY/MD  
 Sample : L1783-02  
 Misc : 7.83G/5ML/MSVOA Y/SOIL  
 ALS Vial : 11 Sample Multiplier: 1

Instrument :  
 MSVOA\_Y  
 ClientSampleId :  
 GP-11-030220

Integration Parameters: RTEINT.P

Integrator: RTE  
 Smoothing : ON Filtering: 5  
 Sampling : 1 Min Area: 3 % of largest Peak  
 Start Thrs: 0.2 Max Peaks: 100  
 Stop Thrs : 0 Peak Location: TOP

If leading or trailing edge < 100 prefer < Baseline drop else tangent >  
 Peak separation: 5

Method : Z:\VOASRV\HPCHEM1\MSVOA\_Y\METHODS\82Y030420S.M  
 Title : SW846 8260

Signal : TIC

peak #	R.T. min	first scan	max scan	last scan	PK TY	peak height	corr. area	corr. % max.	% of total
1	1.871	18	22	28	rVB3	5018	10291	1.30%	0.291%
2	3.968	359	366	375	rBV2	3304	8710	1.10%	0.246%
3	4.218	396	407	420	rBV2	6198	17577	2.21%	0.497%
4	4.749	484	494	500	rBV2	6143	19483	2.45%	0.551%
5	4.828	500	507	521	rVB3	8028	26208	3.30%	0.742%
6	7.742	974	985	990	rBV	106376	250269	31.53%	7.082%
7	7.809	990	996	1008	rVB	179140	409970	51.66%	11.602%
8	8.163	1045	1054	1069	rBV	112455	245369	30.92%	6.944%
9	8.705	1132	1143	1153	rBV	300670	587242	73.99%	16.618%
10	10.193	1379	1387	1395	rBV	455963	793659	100.00%	22.459%
11	11.498	1594	1601	1612	rVB	346882	559800	70.53%	15.842%
12	12.491	1757	1764	1775	rBV	191080	309490	39.00%	8.758%
13	13.430	1911	1918	1925	rBV	188855	295674	37.25%	8.367%

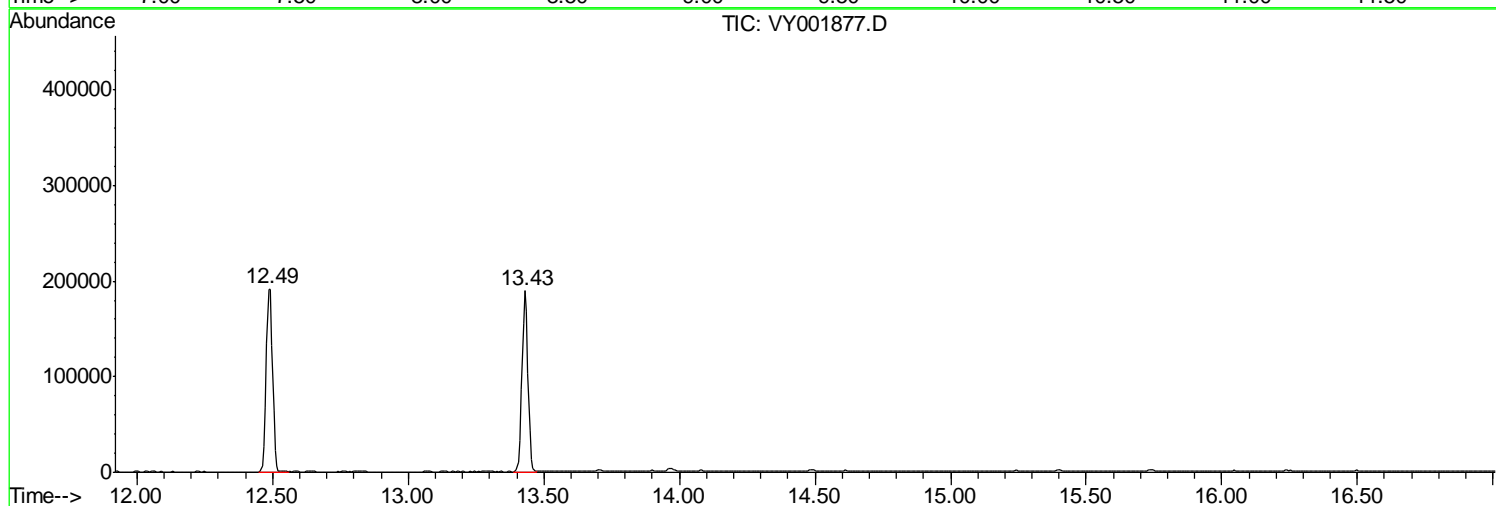
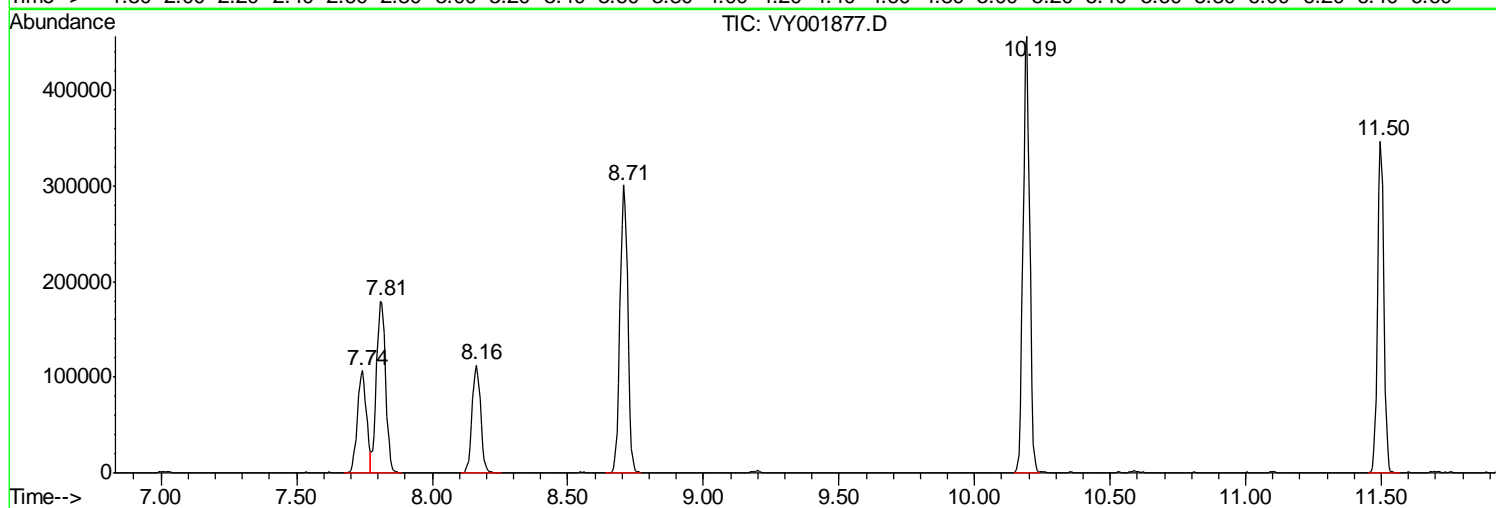
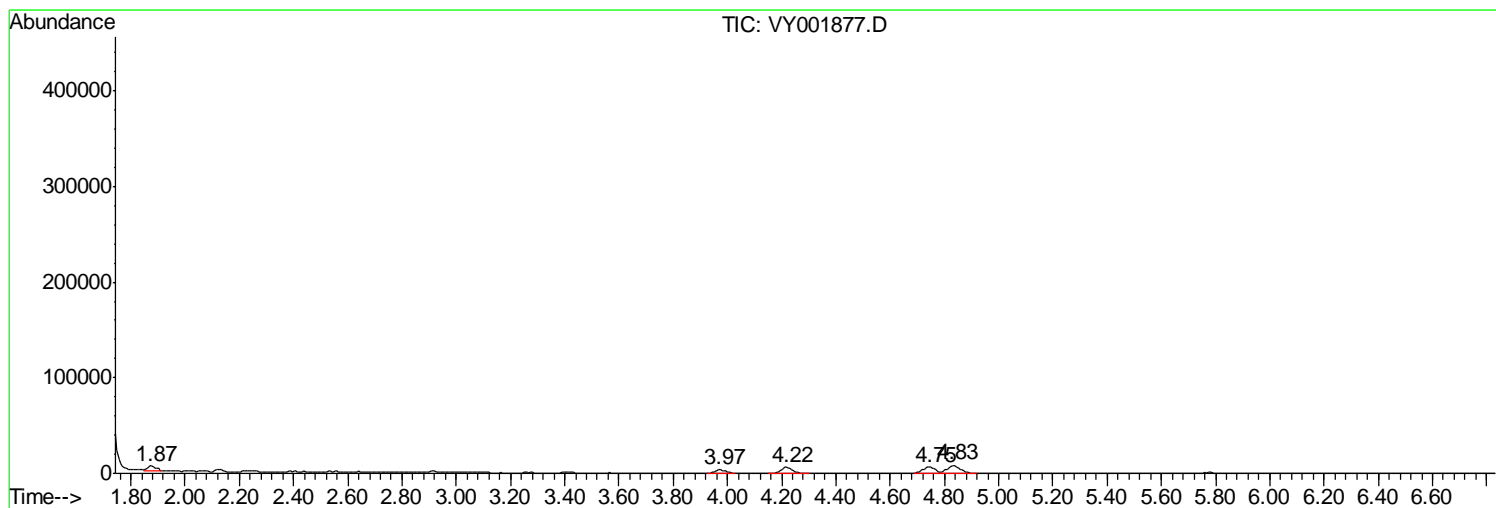
Sum of corrected areas: 3533742

Data Path : Z:\VOASRV\HPCHEM1\MSVOA Y\DATA\VY030520\  
Data File : VY001877.D  
Acq On : 05 Mar 2020 13:28  
Operator : SY/MD  
Sample : L1783-02  
Misc : 7.83G/5ML/MSVOA Y/SOIL  
ALS Vial : 11 Sample Multiplier: 1

Instrument :  
MSVOA\_Y  
ClientSampleId :  
GP-11-030220

Quant Method : Z:\VOASRV\HPCHEM1\MSVOA\_Y\METHODS\82Y030420S.M  
Quant Title : SW846 8260

TIC Library : C:\DATABASE\NIST11.L  
TIC Integration Parameters: LSCINT.P



Data Path : Z:\VOASRV\HPCHEM1\MSVOA\_Y\DATA\VY030520\  
Data File : VY001877.D  
Acq On : 05 Mar 2020 13:28  
Operator : SY/MD  
Sample : L1783-02  
Misc : 7.83G/5ML/MSVOA\_Y/SOIL  
ALS Vial : 11 Sample Multiplier: 1

Instrument :  
MSVOA\_Y  
ClientSampleId :  
GP-11-030220

Quant Method : Z:\VOASRV\HPCHEM1\MSVOA\_Y\METHODS\82Y030420S.M  
Quant Title : SW846 8260

TIC Library : C:\DATABASE\NIST11.L  
TIC Integration Parameters: LSCINT.P

No Library Search Compounds Detected

\*\*\*\*\*

Data Path : Z:\VOASRV\HPCHEM1\MSVOA\_Y\DATA\VY030520\  
Data File : VY001877.D  
Acq On : 05 Mar 2020 13:28  
Operator : SY/MD  
Sample : L1783-02  
Misc : 7.83G/5ML/MSVOA\_Y/SOIL  
ALS Vial : 11 Sample Multiplier: 1

Instrument :  
MSVOA\_Y  
ClientSampleId :  
GP-11-030220

Quant Method : Z:\VOASRV\HPCHEM1\MSVOA\_Y\METHODS\82Y030420S.M  
Quant Title : SW846 8260

TIC Library : C:\DATABASE\NIST11.L  
TIC Integration Parameters: LSCINT.P

TIC Top Hit name	RT	EstConc	Units	Response	--Internal Standard--			
					#	RT	Resp	Conc

---