

Data Path : Z:\voasrv\HPCHEM1\MSVOA_Y\Data\VY030625\
 Data File : VY021441.D
 Acq On : 06 Mar 2025 17:46
 Operator : SY/MD
 Sample : Q1463-01
 Misc : 6.09g/5.0mL/MSVOA_Y/SOIL/B
 ALS Vial : 18 Sample Multiplier: 1

Instrument :
 MSVOA_Y
 ClientSampleId :
 T1

Integration Parameters: RTEINT.P

Integrator: RTE
 Smoothing : ON Filtering: 5
 Sampling : 1 Min Area: 3 % of largest Peak
 Start Thrs: 0.2 Max Peaks: 100
 Stop Thrs : 0 Peak Location: TOP

If leading or trailing edge < 100 prefer < Baseline drop else tangent >
 Peak separation: 5

Method : Z:\voasrv\HPCHEM1\MSVOA_Y\methods\82Y030425S.M
 Title : SW846 8260

Signal : TIC: VY021441.D\data.ms

| peak # | R.T. min | first scan | max scan | last scan | PK TY | peak height | corr. area | corr. % max. | % of total |
|--------|----------|------------|----------|-----------|-------|-------------|------------|--------------|------------|
| 1 | 7.634 | 960 | 970 | 976 | rBV | 207157 | 496975 | 42.82% | 7.317% |
| 2 | 7.707 | 976 | 982 | 995 | rVB | 301551 | 683209 | 58.87% | 10.060% |
| 3 | 8.061 | 1029 | 1040 | 1060 | rBV | 188663 | 421544 | 36.32% | 6.207% |
| 4 | 8.616 | 1122 | 1131 | 1143 | rBV | 517781 | 1011640 | 87.17% | 14.895% |
| 5 | 10.109 | 1368 | 1376 | 1390 | rBV | 666404 | 1138831 | 98.13% | 16.768% |
| 6 | 11.414 | 1581 | 1590 | 1603 | rBV | 702077 | 1160529 | 100.00% | 17.088% |
| 7 | 12.408 | 1746 | 1753 | 1765 | rVB2 | 550146 | 899906 | 77.54% | 13.250% |
| 8 | 13.347 | 1900 | 1907 | 1916 | rBV | 590193 | 887870 | 76.51% | 13.073% |
| 9 | 13.889 | 1989 | 1996 | 2003 | rVB | 55142 | 91170 | 7.86% | 1.342% |

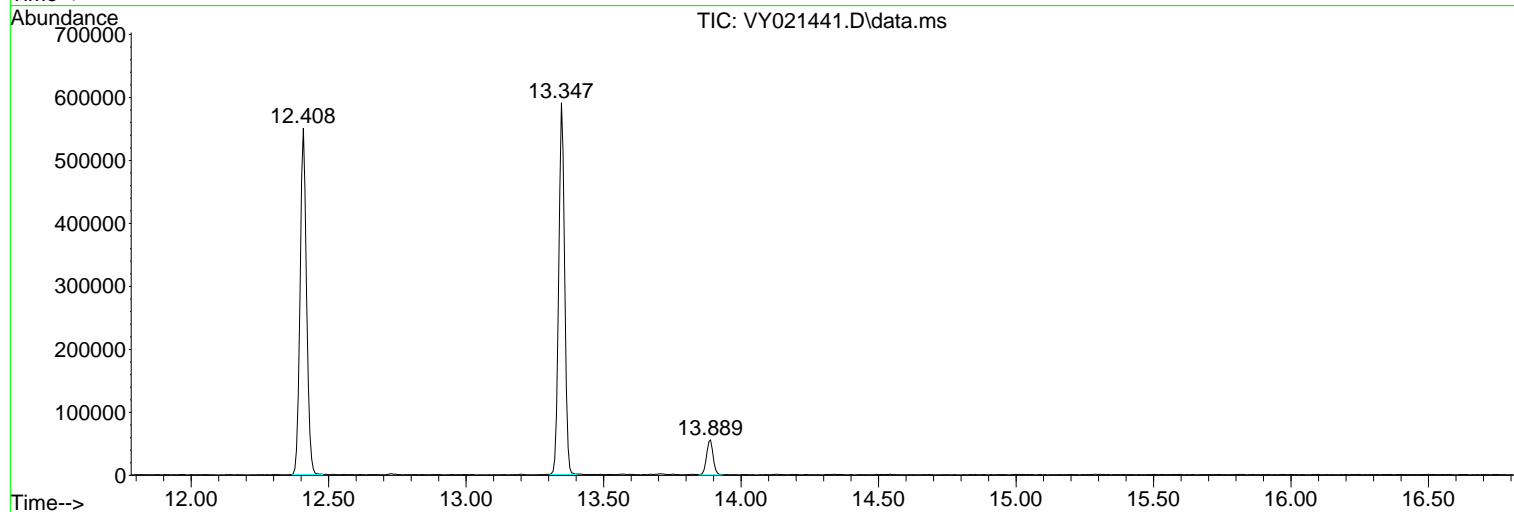
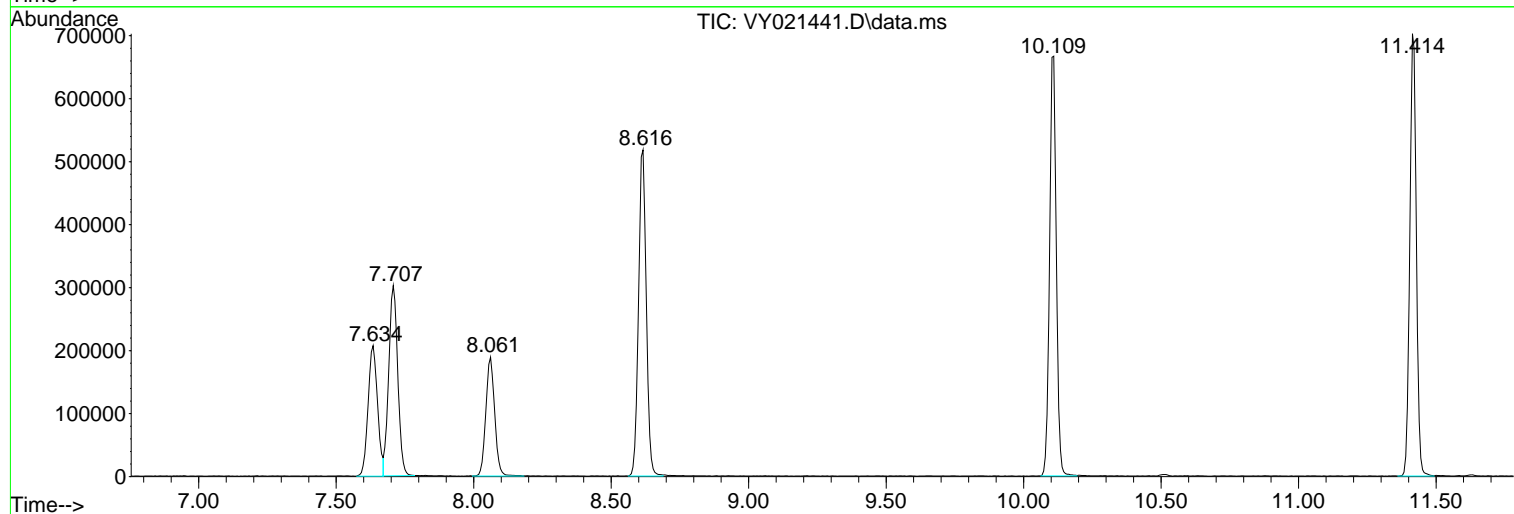
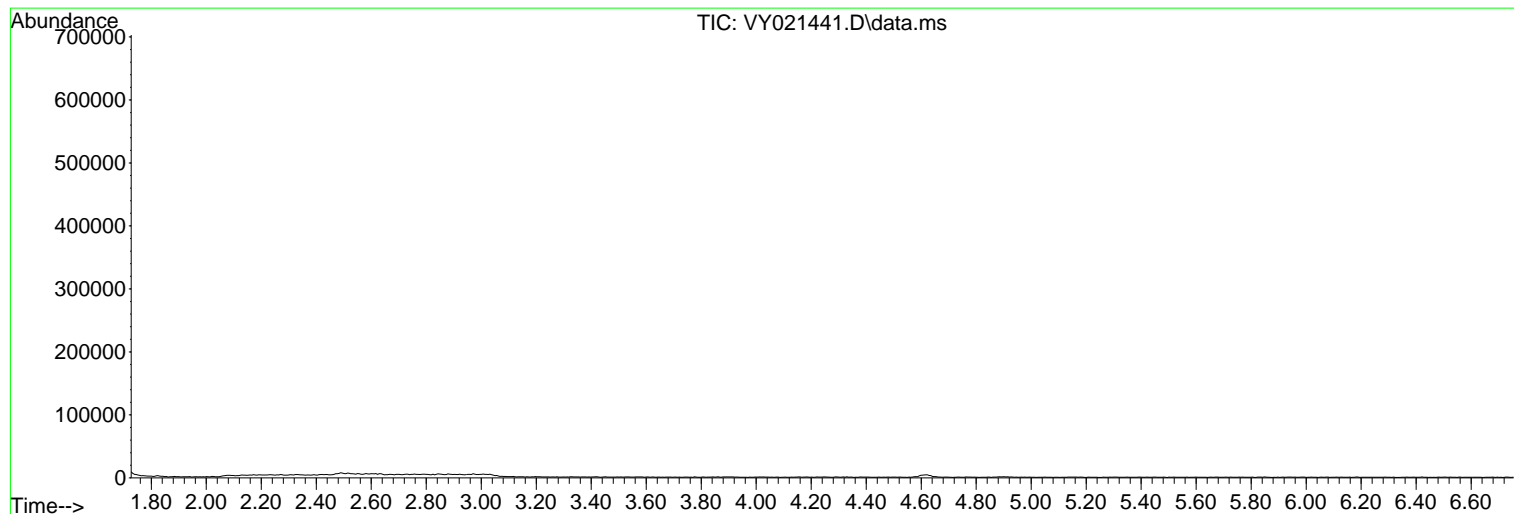
Sum of corrected areas: 6791674

Data Path : Z:\voasrv\HPCHEM1\MSVOA_Y\Data\VY030625\
Data File : VY021441.D
Acq On : 06 Mar 2025 17:46
Operator : SY/MD
Sample : Q1463-01
Misc : 6.09g/5.0mL/MSVOA_Y/SOIL/B
ALS Vial : 18 Sample Multiplier: 1

Instrument :
MSVOA_Y
ClientSampleId :
T1

Quant Method : Z:\voasrv\HPCHEM1\MSVOA_Y\methods\82Y030425S.M
Quant Title : SW846 8260

TIC Library : C:\Database\NIST20.L
TIC Integration Parameters: LSCINT.P



Library Search Compound Report

Data Path : Z:\voasrv\HPCHEM1\MSVOA_Y\Data\VY030625\
Data File : VY021441.D
Acq On : 06 Mar 2025 17:46
Operator : SY/MD
Sample : Q1463-01
Misc : 6.09g/5.0mL/MSVOA_Y/SOIL/B
ALS Vial : 18 Sample Multiplier: 1

Instrument :
MSVOA_Y
ClientSampleId :
T1

Quant Method : Z:\voasrv\HPCHEM1\MSVOA_Y\methods\82Y030425S.M
Quant Title : SW846 8260

TIC Library : C:\Database\NIST20.L
TIC Integration Parameters: LSCINT.P

No Library Search Compounds Detected

Data Path : Z:\voasrv\HPCHEM1\MSVOA_Y\Data\VY030625\
Data File : VY021441.D
Acq On : 06 Mar 2025 17:46
Operator : SY/MD
Sample : Q1463-01
Misc : 6.09g/5.0mL/MSVOA_Y/SOIL/B
ALS Vial : 18 Sample Multiplier: 1

Instrument :
MSVOA_Y
ClientSampleId :
T1

Quant Method : Z:\voasrv\HPCHEM1\MSVOA_Y\methods\82Y030425S.M
Quant Title : SW846 8260

TIC Library : C:\Database\NIST20.L
TIC Integration Parameters: LSCINT.P

| TIC Top Hit name | RT | EstConc | Units | Response | # | RT | Resp | Conc |
|------------------|----|---------|-------|----------|---|----|------|------|
|------------------|----|---------|-------|----------|---|----|------|------|
