

Data Path : Z:\VOASRV\HPCHEM1\MSVOA Y\DATA\VY031120\
 Data File : VY001949.D
 Acq On : 11 Mar 2020 17:30
 Operator : SY/MD
 Sample : L1893-13
 Misc : 8.19G/5ML/MSVOA Y/SOIL
 ALS Vial : 17 Sample Multiplier: 1

Instrument :
 MSVOA_Y
 ClientSampleId :
 TP-4(3-4)

Integration Parameters: RTEINT.P

Integrator: RTE
 Smoothing : ON
 Sampling : 1
 Start Thrs: 0.2
 Stop Thrs : 0

Filtering: 5
 Min Area: 3 % of largest Peak
 Max Peaks: 100
 Peak Location: TOP

If leading or trailing edge < 100 prefer < Baseline drop else tangent >
 Peak separation: 5

Method : Z:\VOASRV\HPCHEM1\MSVOA_Y\METHODS\82Y030420S.M
 Title : SW846 8260

Signal : TIC

peak #	R.T. min	first scan	max scan	last scan	PK TY	peak height	corr. area	corr. % max.	% of total
1	4.743	484	493	498	rBV5	3506	11199	1.07%	0.138%
2	6.810	823	832	842	rVB4	4211	13396	1.28%	0.165%
3	7.736	974	984	989	rBV	128687	306457	29.23%	3.766%
4	7.803	989	995	1006	rVB	226222	528503	50.41%	6.495%
5	8.017	1022	1030	1035	rBV3	5644	12918	1.23%	0.159%
6	8.157	1043	1053	1064	rVB	132319	288406	27.51%	3.544%
7	8.291	1064	1075	1081	rVV7	4557	11534	1.10%	0.142%
8	8.425	1092	1097	1105	rVB4	4709	11561	1.10%	0.142%
9	8.559	1110	1119	1126	rBV4	14995	30810	2.94%	0.379%
10	8.699	1134	1142	1155	rBV	362095	724013	69.05%	8.897%
11	9.193	1211	1223	1230	rBV2	35768	82309	7.85%	1.011%
12	9.376	1243	1253	1259	rBV4	5414	10841	1.03%	0.133%
13	9.827	1321	1327	1331	rBV2	15331	26596	2.54%	0.327%
14	9.961	1340	1349	1360	rBV4	10226	26060	2.49%	0.320%
15	10.065	1360	1366	1371	rBV3	5817	11171	1.07%	0.137%
16	10.187	1378	1386	1398	rBV	605719	1048479	100.00%	12.884%
17	10.376	1409	1417	1424	rVB3	37969	74583	7.11%	0.917%
18	10.528	1437	1442	1448	rVB3	11462	19934	1.90%	0.245%
19	10.620	1450	1457	1465	rVV7	12511	31006	2.96%	0.381%
20	10.809	1483	1488	1493	rVB	10784	16481	1.57%	0.203%
21	10.912	1493	1505	1511	rBV6	7588	26240	2.50%	0.322%
22	10.973	1511	1515	1518	rVV5	7976	14160	1.35%	0.174%
23	11.040	1522	1526	1531	rVV	25633	44704	4.26%	0.549%
24	11.095	1531	1535	1541	rVV	20889	37129	3.54%	0.456%
25	11.156	1541	1545	1548	rVV5	6856	11144	1.06%	0.137%
26	11.205	1548	1553	1558	rVV3	10214	18527	1.77%	0.228%
27	11.284	1558	1566	1577	rVB5	23784	62448	5.96%	0.767%
28	11.388	1577	1583	1592	rBV	21829	41372	3.95%	0.508%
29	11.498	1592	1601	1610	rVV	535964	879691	83.90%	10.810%
30	11.601	1612	1618	1622	rVV2	21091	41951	4.00%	0.516%
31	11.711	1626	1636	1645	rVV4	57767	169917	16.21%	2.088%
32	11.784	1645	1648	1652	rVB3	14284	21914	2.09%	0.269%
33	12.004	1678	1684	1692	rBV6	17012	46677	4.45%	0.574%
34	12.126	1700	1704	1708	rVB	18415	25877	2.47%	0.318%

Data Path : Z:\VOASRV\HPCHEM1\MSVOA Y\DATA\VY031120\
 Data File : VY001949.D
 Acq On : 11 Mar 2020 17:30
 Operator : SY/MD
 Sample : L1893-13
 Misc : 8.19G/5ML/MSVOA Y/SOIL
 ALS Vial : 17 Sample Multiplier: 1

Instrument :
 MSVOA_Y
 ClientSampleId :
 TP-4(3-4)

Integration Parameters: RTEINT.P

Integrator: RTE
 Smoothing : ON
 Sampling : 1
 Start Thrs: 0.2
 Stop Thrs : 0

Filtering: 5
 Min Area: 3 % of largest Peak
 Max Peaks: 100
 Peak Location: TOP

If leading or trailing edge < 100 prefer < Baseline drop else tangent >
 Peak separation: 5

Method : Z:\VOASRV\HPCHEM1\MSVOA_Y\METHODS\82Y030420S.M
 Title : SW846 8260

35	12.211	1713	1718	1720	rVV3	16840	28318	2.70%	0.348%
36	12.254	1720	1725	1729	rVB4	22359	41026	3.91%	0.504%
37	12.333	1734	1738	1742	rBV2	7117	10787	1.03%	0.133%
38	12.388	1742	1747	1749	rBV4	9571	15953	1.52%	0.196%
39	12.485	1758	1763	1769	rBV	410275	629451	60.03%	7.735%
40	12.650	1786	1790	1792	rBV3	14260	20826	1.99%	0.256%
41	12.741	1798	1805	1808	rBV3	36505	68624	6.55%	0.843%
42	12.772	1808	1810	1812	rVV	31838	40545	3.87%	0.498%
43	12.815	1812	1817	1822	rVV5	75484	140323	13.38%	1.724%
44	12.863	1822	1825	1831	rVB3	12492	20246	1.93%	0.249%
45	12.973	1831	1843	1852	rBV3	24452	82257	7.85%	1.011%
46	13.046	1852	1855	1862	rVB	26578	39353	3.75%	0.484%
47	13.125	1862	1868	1873	rBV	94141	142237	13.57%	1.748%
48	13.321	1893	1900	1904	rBV4	36169	70598	6.73%	0.868%
49	13.369	1904	1908	1911	rVV4	22652	38015	3.63%	0.467%
50	13.430	1911	1918	1928	rVV	566651	913265	87.10%	11.223%
51	13.510	1928	1931	1936	rVB5	9998	13251	1.26%	0.163%
52	13.631	1947	1951	1954	rVV2	31148	43938	4.19%	0.540%
53	13.674	1954	1958	1966	rVB3	33352	63240	6.03%	0.777%
54	13.759	1966	1972	1976	rBV2	70946	110578	10.55%	1.359%
55	13.894	1990	1994	1996	rBV	14114	21900	2.09%	0.269%
56	13.924	1996	1999	2003	rVB	30665	41067	3.92%	0.505%
57	13.979	2003	2008	2012	rVB	43657	62620	5.97%	0.770%
58	14.028	2012	2016	2020	rVB6	10738	17525	1.67%	0.215%
59	14.089	2020	2026	2031	rBV	50046	84539	8.06%	1.039%
60	14.137	2031	2034	2042	rBV8	8912	21527	2.05%	0.265%
61	14.223	2042	2048	2050	rBV3	13310	25748	2.46%	0.316%
62	14.265	2052	2055	2059	rVB4	8721	12535	1.20%	0.154%
63	14.345	2064	2068	2071	rVB	25596	39694	3.79%	0.488%
64	14.387	2071	2075	2078	rBV3	22580	29979	2.86%	0.368%
65	14.430	2078	2082	2089	rBV7	14563	19930	1.90%	0.245%
66	14.570	2101	2105	2109	rVV2	21591	37148	3.54%	0.457%
67	14.619	2109	2113	2117	rVB	55929	78191	7.46%	0.961%
68	14.680	2117	2123	2129	rBV2	60133	130982	12.49%	1.610%
69	14.741	2129	2133	2140	rVB5	21600	41398	3.95%	0.509%
70	14.948	2163	2167	2173	rBV4	16189	24086	2.30%	0.296%
71	15.064	2180	2186	2191	rVB3	19229	39343	3.75%	0.483%

Data Path : Z:\VOASRV\HPCHEM1\MSVOA Y\DATA\VY031120\
Data File : VY001949.D
Acq On : 11 Mar 2020 17:30
Operator : SY/MD
Sample : L1893-13
Misc : 8.19G/5ML/MSVOA Y/SOIL
ALS Vial : 17 Sample Multiplier: 1

Instrument :
MSVOA_Y
ClientSampleId :
TP-4(3-4)

Integration Parameters: RTEINT.P
Integrator: RTE
Smoothing : ON Filtering: 5
Sampling : 1 Min Area: 3 % of largest Peak
Start Thrs: 0.2 Max Peaks: 100
Stop Thrs : 0 Peak Location: TOP

If leading or trailing edge < 100 prefer < Baseline drop else tangent >
Peak separation: 5

Method : Z:\VOASRV\HPCHEM1\MSVOA_Y\METHODS\82Y030420S.M
Title : SW846 8260

72	15.223	2204	2212	2213	rVV6	12778	23237	2.22%	0.286%
73	15.241	2213	2215	2222	rVB	16784	24730	2.36%	0.304%
74	15.351	2228	2233	2239	rBV5	9172	20795	1.98%	0.256%
75	15.442	2245	2248	2256	rVB2	16621	28924	2.76%	0.355%
76	15.534	2256	2263	2270	rBV2	5877	15822	1.51%	0.194%
77	16.308	2383	2390	2396	rBV3	10356	21803	2.08%	0.268%
78	16.503	2415	2422	2429	rBV2	5448	13185	1.26%	0.162%

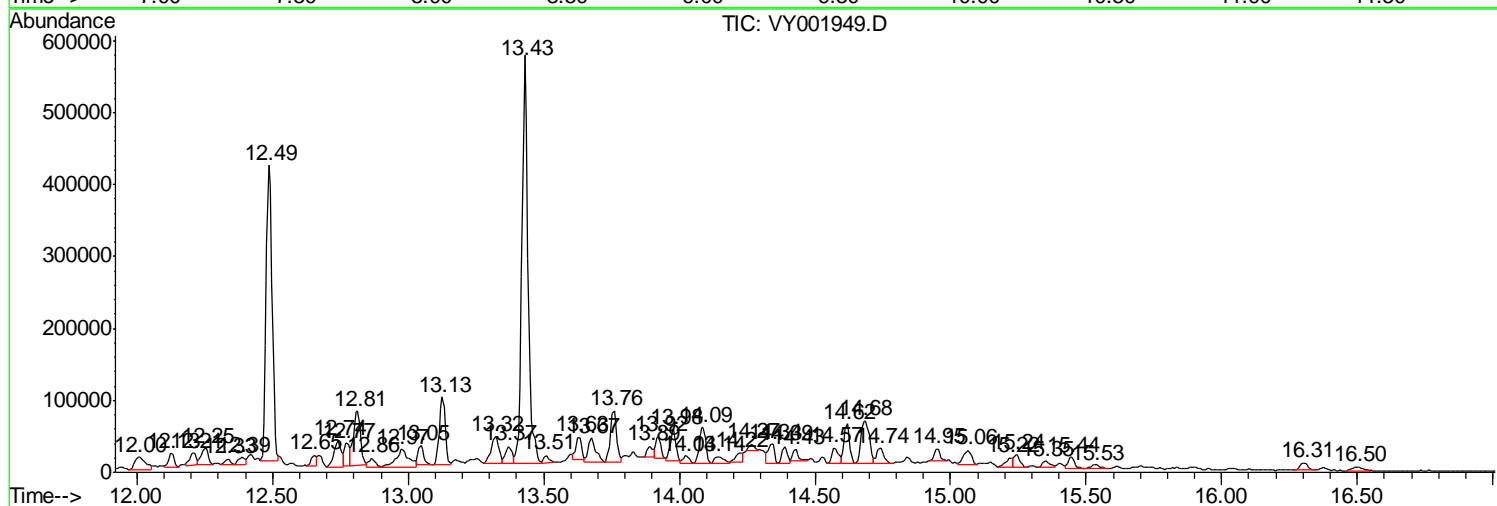
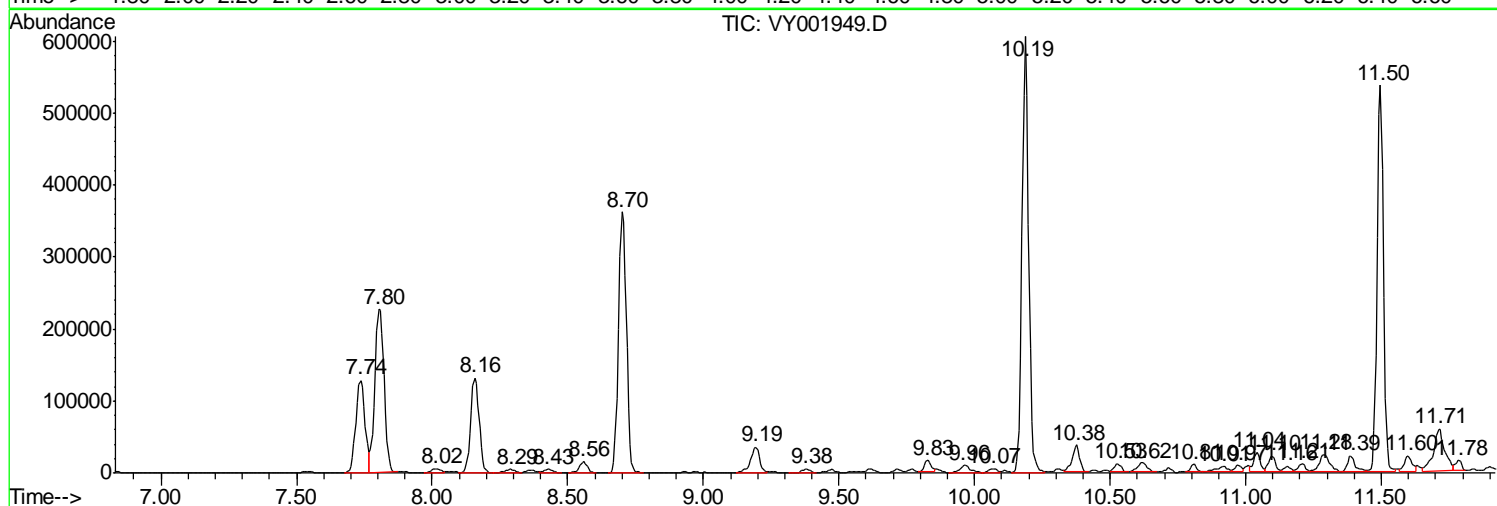
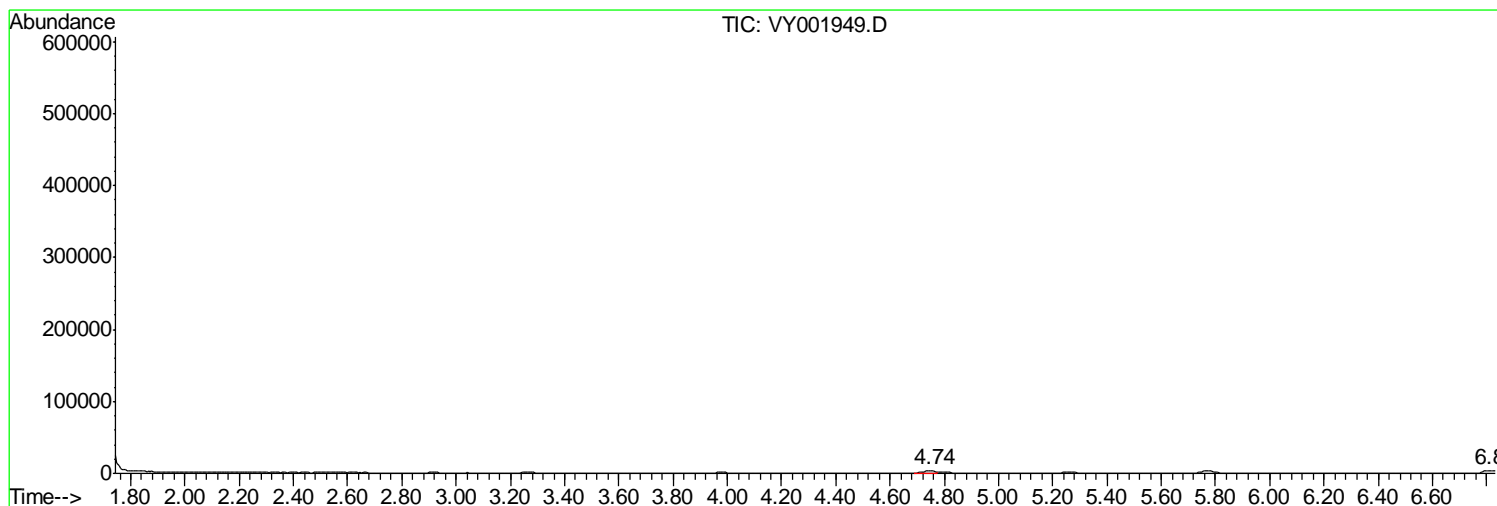
Sum of corrected areas: 8137547

Data Path : Z:\VOASRV\HPCHEM1\MSVOA Y\DATA\VY031120\
 Data File : VY001949.D
 Acq On : 11 Mar 2020 17:30
 Operator : SY/MD
 Sample : L1893-13
 Misc : 8.19G/5ML/MSVOA Y/SOIL
 ALS Vial : 17 Sample Multiplier: 1

Instrument :
 MSVOA_Y
 ClientSampleId :
 TP-4(3-4)

Quant Method : Z:\VOASRV\HPCHEM1\MSVOA_Y\METHODS\82Y030420S.M
 Quant Title : SW846 8260

TIC Library : C:\DATABASE\NIST11.L
 TIC Integration Parameters: LSCINT.P



Data Path : Z:\VOASRV\HPCHEM1\MSVOA Y\DATA\VY031120\
 Data File : VY001949.D
 Acq On : 11 Mar 2020 17:30
 Operator : SY/MD
 Sample : L1893-13
 Misc : 8.19G/5ML/MSVOA Y/SOIL
 ALS Vial : 17 Sample Multiplier: 1

Instrument :
 MSVOA_Y
 ClientSampled :
 TP-4(3-4)

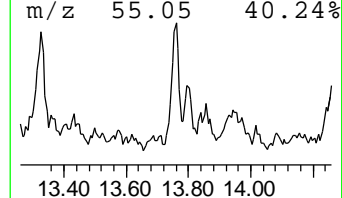
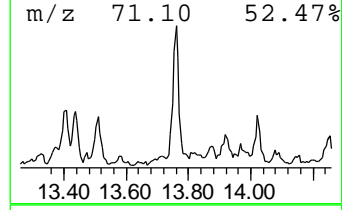
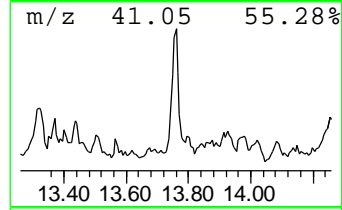
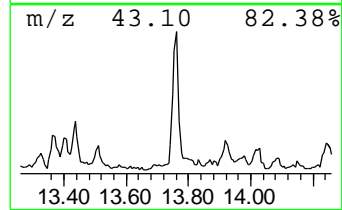
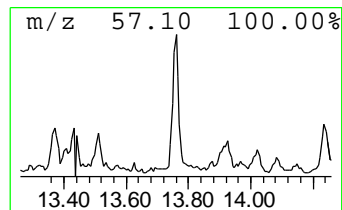
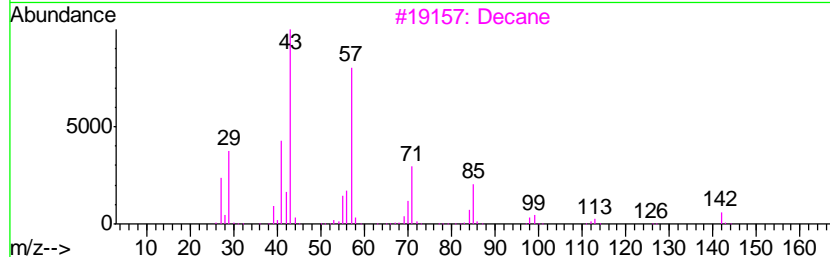
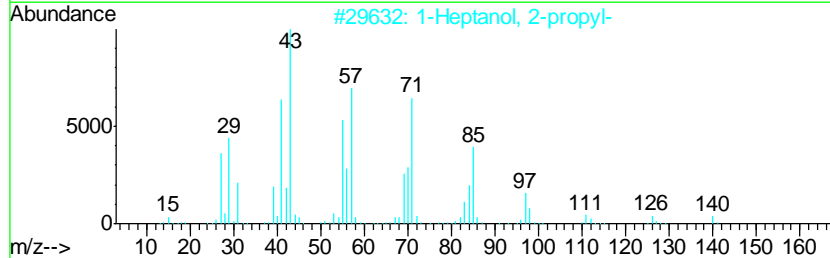
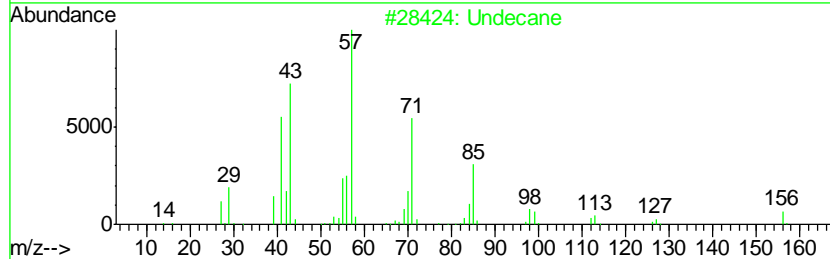
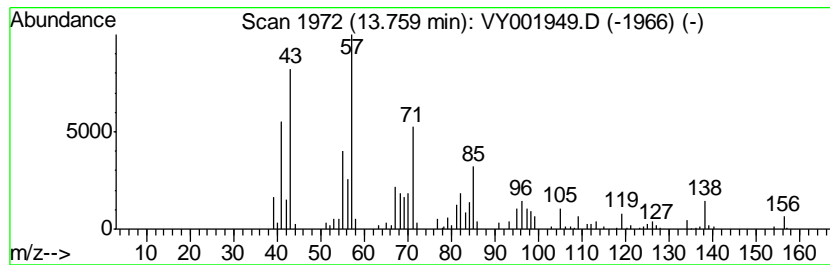
Quant Method : Z:\VOASRV\HPCHEM1\MSVOA_Y\METHODS\82Y030420S.M
 Quant Title : SW846 8260

TIC Library : C:\DATABASE\NIST11.L
 TIC Integration Parameters: LSCINT.P

 Peak Number 1 Undecane Concentration Rank 2

R.T.	EstConc	Area	Relative to ISTD	R.T.
13.76	6.05 ug/l	110578	1,4-Dichlorobenzene-d4	13.43

Hit#	of	Tentative ID	MW	MolForm	CAS#	Qual
1	5	Undecane	156	C11H24	001120-21-4	91
2		1-Heptanol, 2-propyl-	158	C10H22O	010042-59-8	49
3		Decane	142	C10H22	000124-18-5	46
4		Undecane, 5,7-dimethyl-	184	C13H28	017312-83-3	38
5		Hexadecane	226	C16H34	000544-76-3	35



Data Path : Z:\VOASRV\HPCHEM1\MSVOA Y\DATA\VY031120\
 Data File : VY001949.D
 Acq On : 11 Mar 2020 17:30
 Operator : SY/MD
 Sample : L1893-13
 Misc : 8.19G/5ML/MSVOA Y/SOIL
 ALS Vial : 17 Sample Multiplier: 1

Instrument :
 MSVOA_Y
 ClientSampled :
 TP-4(3-4)

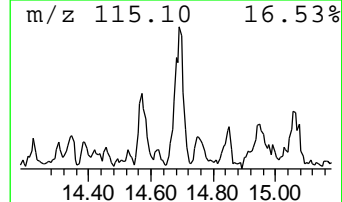
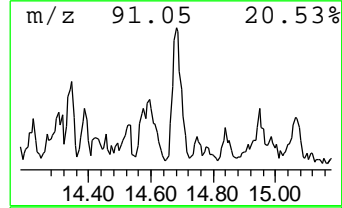
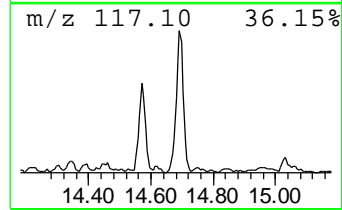
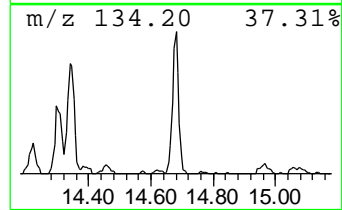
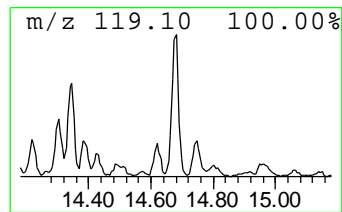
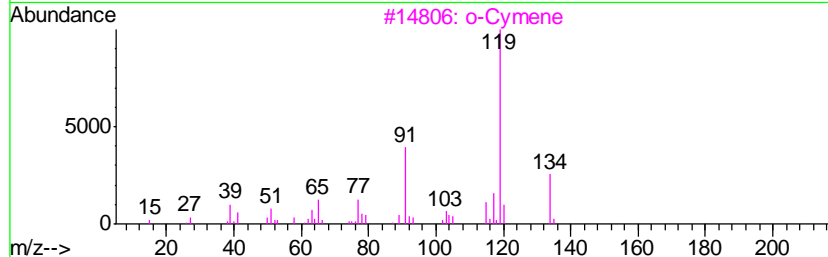
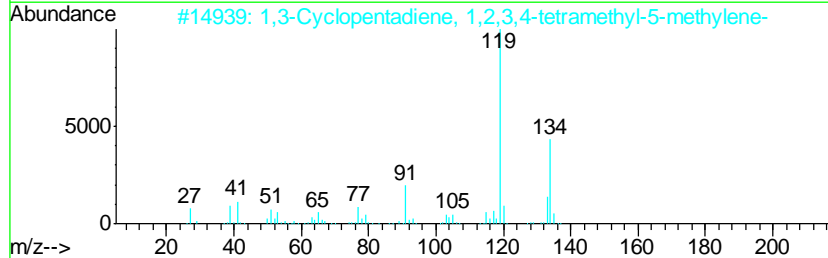
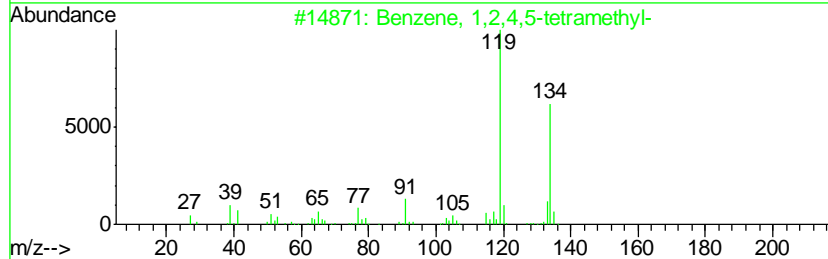
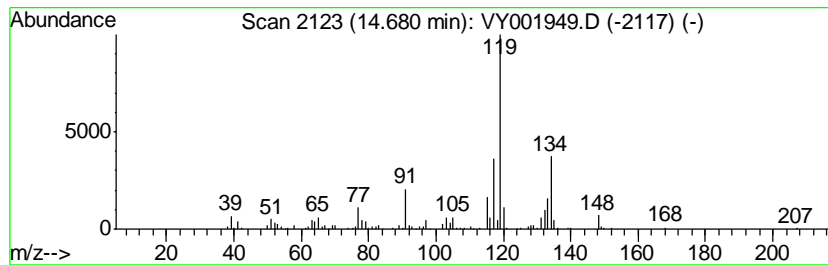
Quant Method : Z:\VOASRV\HPCHEM1\MSVOA_Y\METHODS\82Y030420S.M
 Quant Title : SW846 8260

TIC Library : C:\DATABASE\NIST11.L
 TIC Integration Parameters: LSCINT.P

 Peak Number 2 Benzene, 1,2,4,5-tetramethyl- Concentration Rank 1

R.T.	EstConc	Area	Relative to ISTD	R.T.
14.68	7.17 ug/l	130982	1,4-Dichlorobenzene-d4	13.43

Hit#	of	Tentative ID	MW	MolForm	CAS#	Qual
1	5	Benzene, 1,2,4,5-tetramethyl-	134	C10H14	000095-93-2	81
2		1,3-Cyclopentadiene, 1,2,3,4-tet...	134	C10H14	076089-59-3	81
3		o-Cymene	134	C10H14	000527-84-4	76
4		Benzene, 1,2,3,5-tetramethyl-	134	C10H14	000527-53-7	74
5		p-Cymene	134	C10H14	000099-87-6	70



Data Path : Z:\VOASRV\HPCHEM1\MSVOA_Y\DATA\VY031120\
Data File : VY001949.D
Acq On : 11 Mar 2020 17:30
Operator : SY/MD
Sample : L1893-13
Misc : 8.19G/5ML/MSVOA_Y/SOIL
ALS Vial : 17 Sample Multiplier: 1

Instrument :
MSVOA_Y
ClientSampleId :
TP-4(3-4)

Quant Method : Z:\VOASRV\HPCHEM1\MSVOA_Y\METHODS\82Y030420S.M
Quant Title : SW846 8260

TIC Library : C:\DATABASE\NIST11.L
TIC Integration Parameters: LSCINT.P

TIC Top Hit name	RT	EstConc	Units	Response	--Internal Standard--			
					#	RT	Resp	Conc
Undecane	13.76	6.0	ug/l	110578	4	13.43	913265	50.0
Benzene, 1,2,4,5-...	14.68	7.2	ug/l	130982	4	13.43	913265	50.0