

Data Path : Z:\voasrv\HPCHEM1\MSVOA_Y\Data\VY031623\
 Data File : VY012969.D
 Acq On : 16 Mar 2023 14:29
 Operator : KP/MD
 Sample : 01932-05
 Misc : 5.18g/5.0mL/MSVOA_Y/SOIL
 ALS Vial : 12 Sample Multiplier: 1

Instrument :
 MSVOA_Y
 ClientSampleId :
 CE-81-031423

Quant Time: Mar 17 01:35:50 2023
 Quant Method : Z:\voasrv\HPCHEM1\MSVOA_Y\methods\82Y030223S.M
 Quant Title : SW846 8260
 QLast Update : Fri Mar 03 01:13:13 2023
 Response via : Initial Calibration

Compound	R.T.	QIon	Response	Conc	Units	Dev(Min)

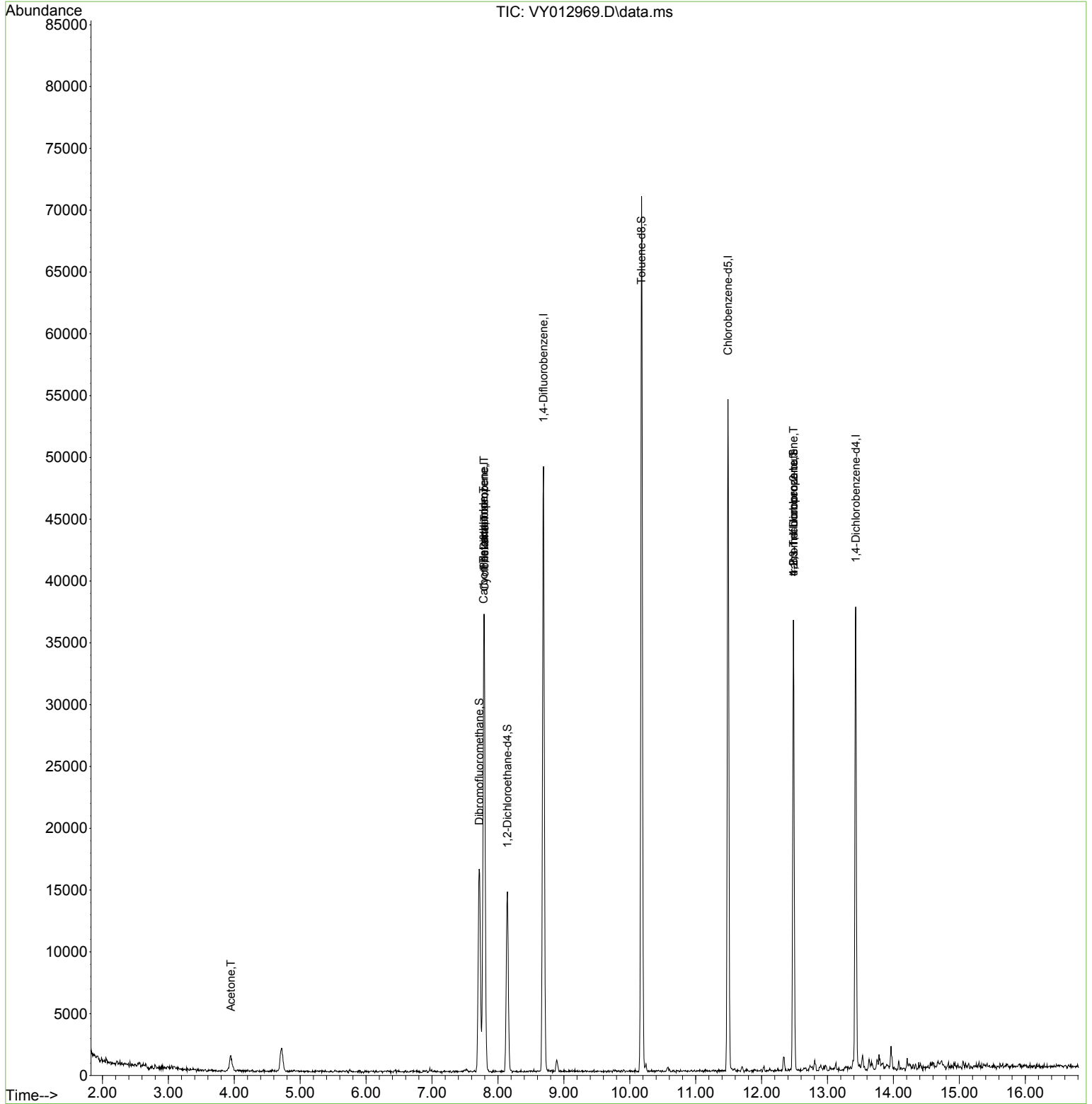
Internal Standards						
1) Pentafluorobenzene	7.789	168	28701	50.000	ug/l	0.00
34) 1,4-Difluorobenzene	8.691	114	39348	50.000	ug/l	0.00
63) Chlorobenzene-d5	11.489	117	29388	50.000	ug/l	0.00
72) 1,4-Dichlorobenzene-d4	13.428	152	9719	50.000	ug/l	0.00
System Monitoring Compounds						
33) 1,2-Dichloroethane-d4	8.142	65	11140	39.093	ug/l	0.00
Spiked Amount	50.000	Range	50 - 163	Recovery	=	78.180%
35) Dibromofluoromethane	7.716	113	12308	51.831	ug/l	0.00
Spiked Amount	50.000	Range	54 - 147	Recovery	=	103.660%
50) Toluene-d8	10.179	98	45830	52.792	ug/l	0.00
Spiked Amount	50.000	Range	49 - 140	Recovery	=	105.580%
62) 4-Bromofluorobenzene	12.483	95	9701	33.108	ug/l	0.00
Spiked Amount	50.000	Range	25 - 144	Recovery	=	66.220%
Target Compounds						
						Qvalue
16) Acetone	3.948	43	2501	22.360	ug/l #	87
20) Methylene Chloride	4.722	84	1505	Below Cal		95
31) Cyclohexane	7.795	56	612	1.121	ug/l #	1
36) 1,1-Dichloropropene	7.789	75	2314	5.815	ug/l #	43
38) Carbon Tetrachloride	7.783	117	2967	7.220	ug/l #	17
76) 1,2,3-Trichloropropane	12.483	75	5126	44.167	ug/l #	100
81) trans-1,4-Dichloro-2-b...	12.483	75	5126	91.515	ug/l #	13

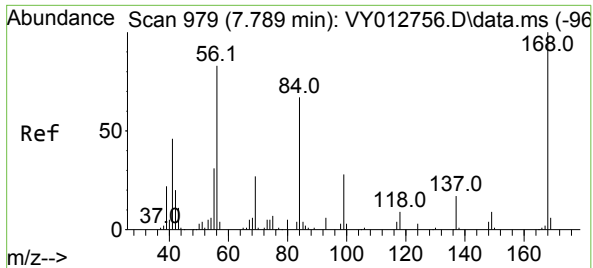
(#) = qualifier out of range (m) = manual integration (+) = signals summed

Data Path : Z:\voasrv\HPCHEM1\MSVOA_Y\Data\VY031623\
 Data File : VY012969.D
 Acq On : 16 Mar 2023 14:29
 Operator : KP/MD
 Sample : 01932-05
 Misc : 5.18g/5.0mL/MSVOA_Y/SOIL
 ALS Vial : 12 Sample Multiplier: 1

Instrument :
 MSVOA_Y
 ClientSampleId :
 CE-81-031423

Quant Time: Mar 17 01:35:50 2023
 Quant Method : Z:\voasrv\HPCHEM1\MSVOA_Y\methods\82Y030223S.M
 Quant Title : SW846 8260
 QLast Update : Fri Mar 03 01:13:13 2023
 Response via : Initial Calibration

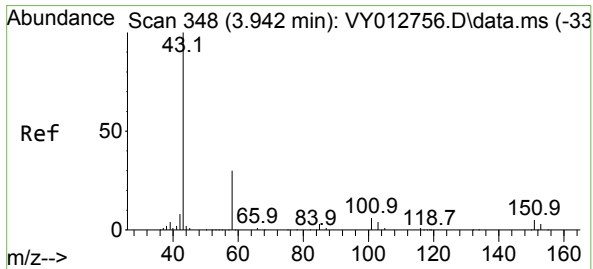
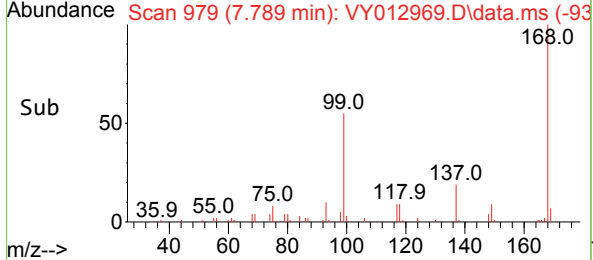
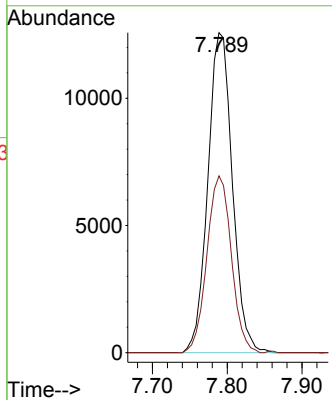
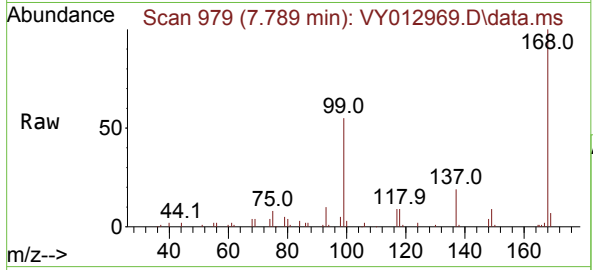




#1
 Pentafluorobenzene
 Concen: 50.000 ug/l
 RT: 7.789 min Scan# 91
 Delta R.T. -0.000 min
 Lab File: VY012969.D
 Acq: 16 Mar 2023 14:29

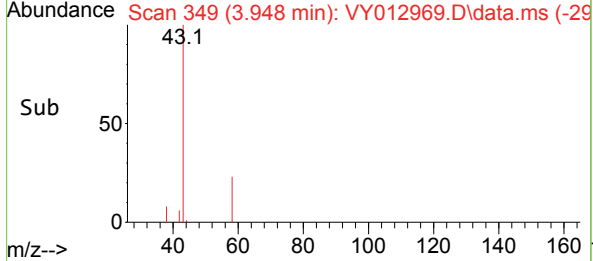
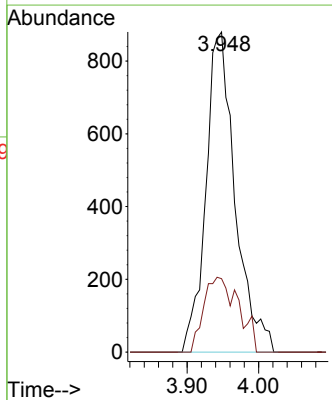
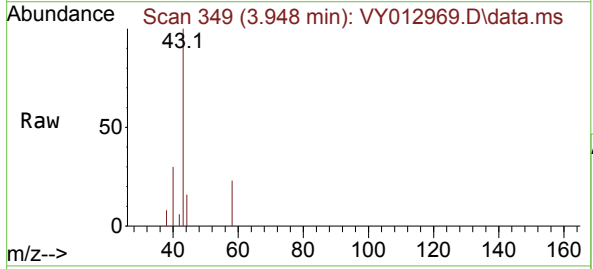
Instrument : MSVOA_Y
 ClientSampleId : CE-81-031423

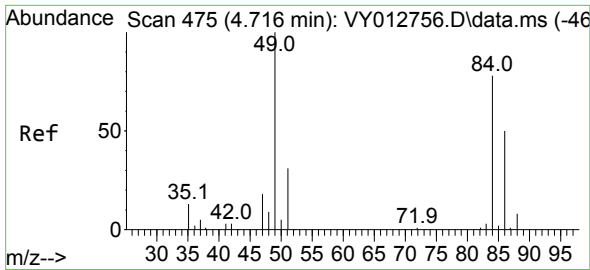
Tgt Ion:168 Resp: 28701
 Ion Ratio Lower Upper
 168 100
 99 55.2 41.7 62.5



#16
 Acetone
 Concen: 22.360 ug/l
 RT: 3.948 min Scan# 349
 Delta R.T. 0.006 min
 Lab File: VY012969.D
 Acq: 16 Mar 2023 14:29

Tgt Ion: 43 Resp: 2501
 Ion Ratio Lower Upper
 43 100
 58 23.0 24.2 36.2#

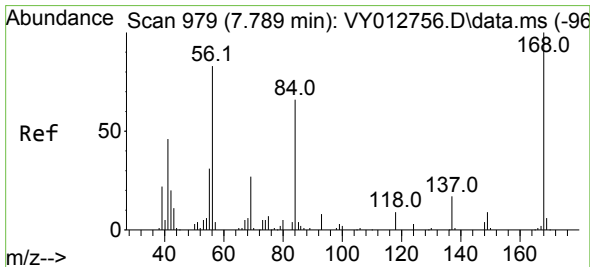
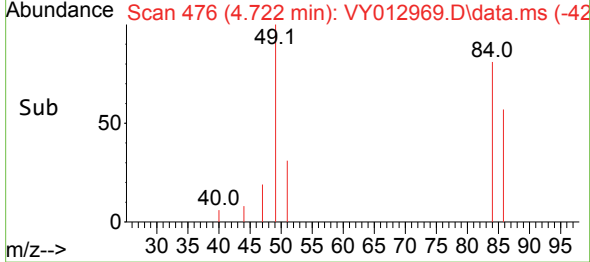
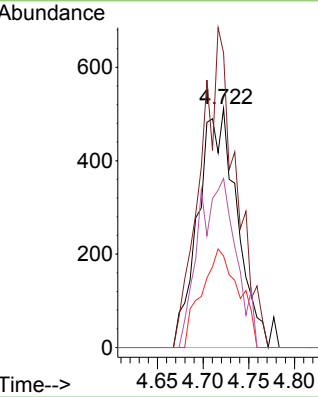
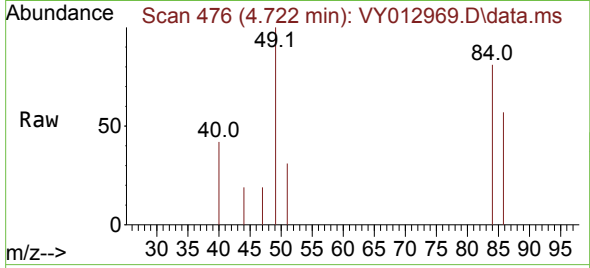




#20
Methylene Chloride
Concen: Below Cal
RT: 4.722 min Scan# 41
Delta R.T. 0.006 min
Lab File: VY012969.D
Acq: 16 Mar 2023 14:29

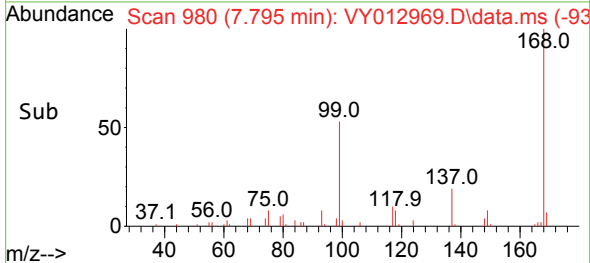
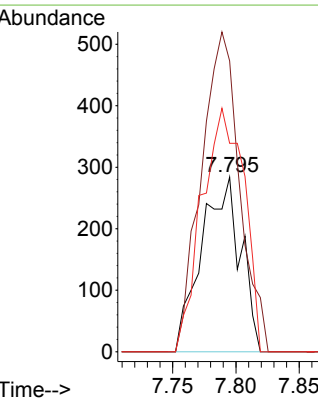
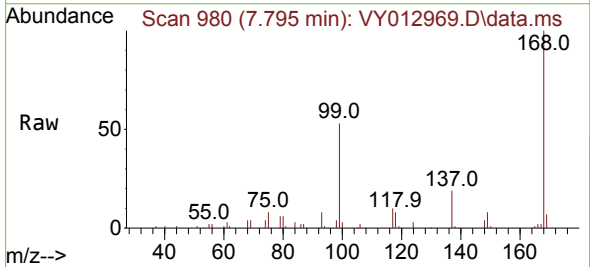
Instrument :
MSVOA_Y
ClientSampleId :
CE-81-031423

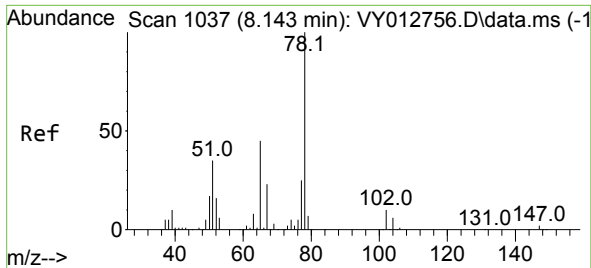
Tgt Ion	Resp	Lower	Upper
84	1505		
49	123.2	102.6	154.0
51	38.3	31.9	47.9
86	70.7	51.0	76.6



#31
Cyclohexane
Concen: 1.121 ug/l
RT: 7.795 min Scan# 980
Delta R.T. 0.006 min
Lab File: VY012969.D
Acq: 16 Mar 2023 14:29

Tgt Ion	Resp	Lower	Upper
56	612		
69	166.5	25.7	38.5#
84	119.4	64.3	96.5#

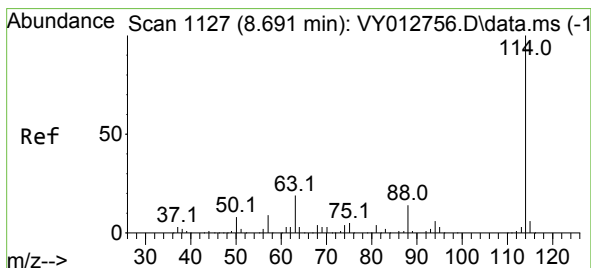
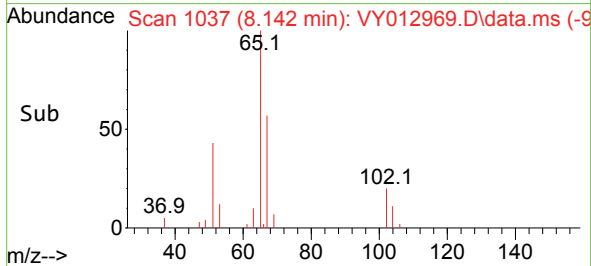
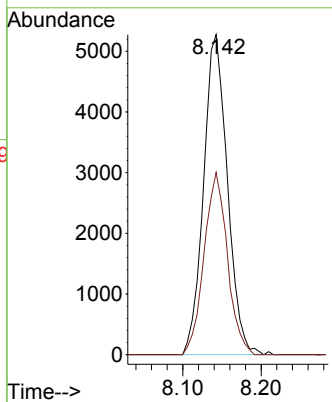
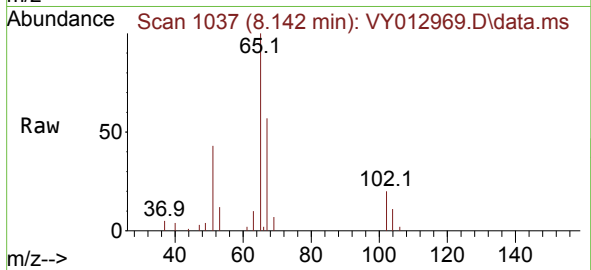




#33
 1,2-Dichloroethane-d4
 Concen: 39.093 ug/l
 RT: 8.142 min Scan# 1037
 Delta R.T. -0.001 min
 Lab File: VY012969.D
 Acq: 16 Mar 2023 14:29

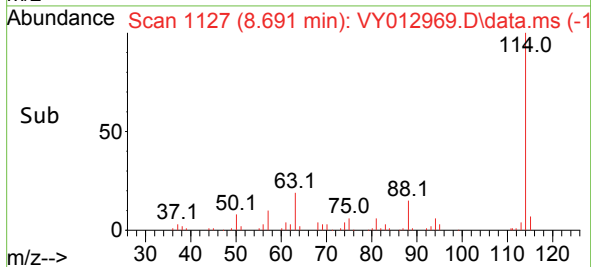
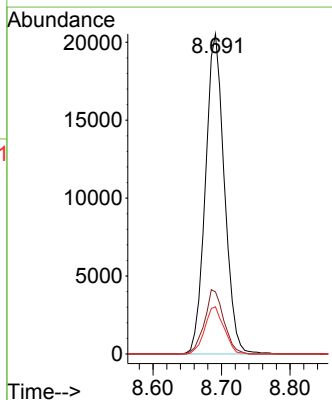
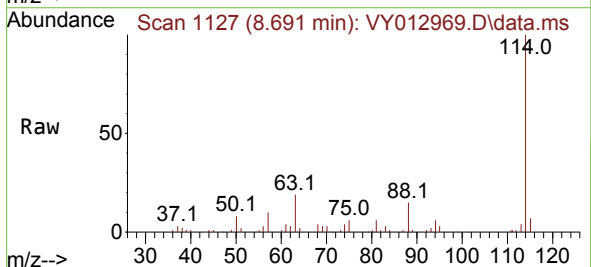
Instrument : MSVOA_Y
 ClientSampleId : CE-81-031423

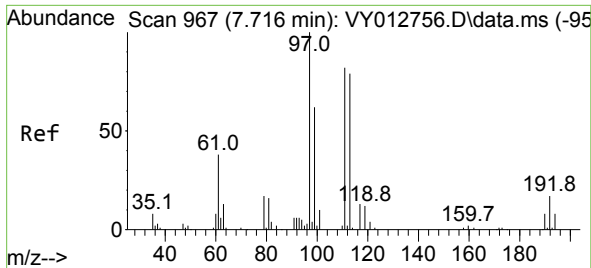
Tgt Ion: 65 Resp: 11140
 Ion Ratio Lower Upper
 65 100
 67 55.8 0.0 104.0



#34
 1,4-Difluorobenzene
 Concen: 50.000 ug/l
 RT: 8.691 min Scan# 1127
 Delta R.T. -0.000 min
 Lab File: VY012969.D
 Acq: 16 Mar 2023 14:29

Tgt Ion:114 Resp: 39348
 Ion Ratio Lower Upper
 114 100
 63 19.4 0.0 37.4
 88 14.8 0.0 28.6





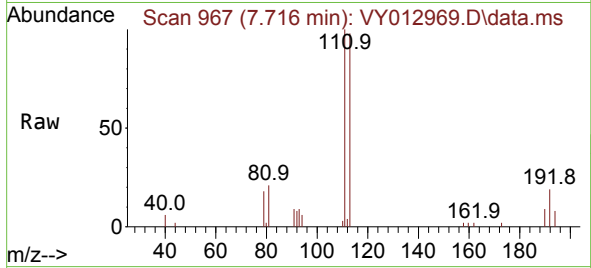
#35
 Dibromofluoromethane
 Concen: 51.831 ug/l
 RT: 7.716 min Scan# 909
 Delta R.T. -0.000 min
 Lab File: VY012969.D
 Acq: 16 Mar 2023 14:29

Instrument :

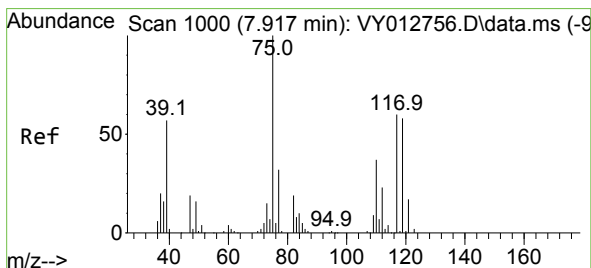
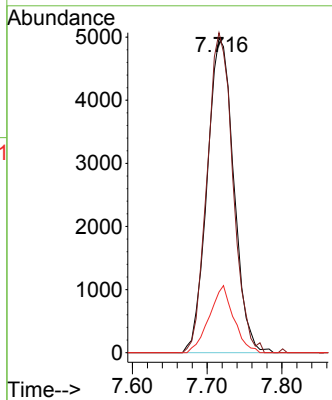
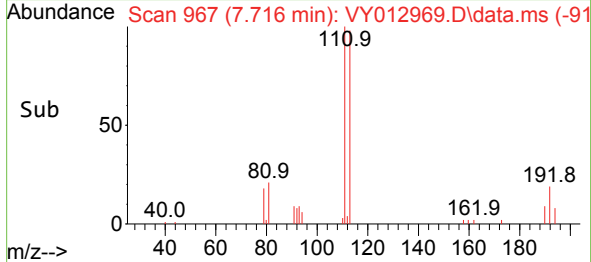
MSVOA_Y

ClientSampleId :

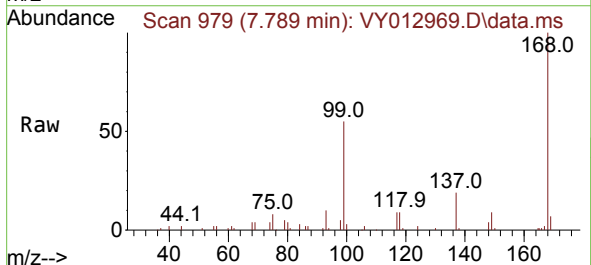
CE-81-031423



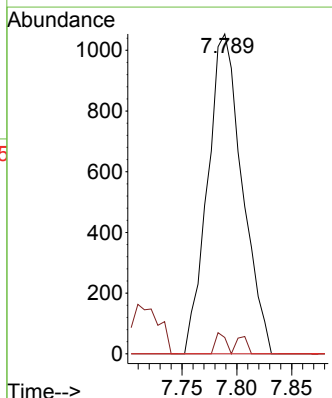
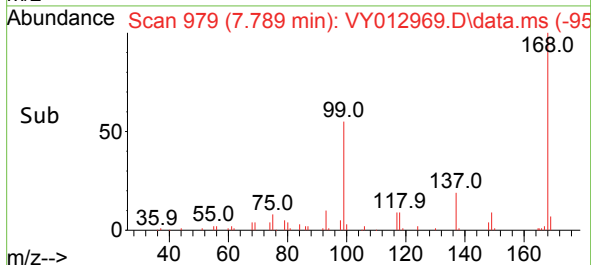
Tgt Ion:113 Resp: 12308
 Ion Ratio Lower Upper
 113 100
 111 98.9 82.2 123.2
 192 19.6 16.8 25.2

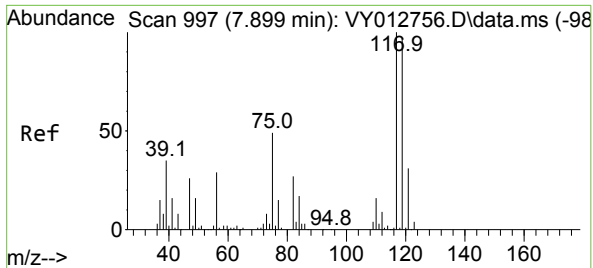


#36
 1,1-Dichloropropene
 Concen: 5.815 ug/l
 RT: 7.789 min Scan# 979
 Delta R.T. -0.128 min
 Lab File: VY012969.D
 Acq: 16 Mar 2023 14:29



Tgt Ion: 75 Resp: 2314
 Ion Ratio Lower Upper
 75 100
 110 1.9 17.8 53.3#
 77 0.0 25.0 37.4#

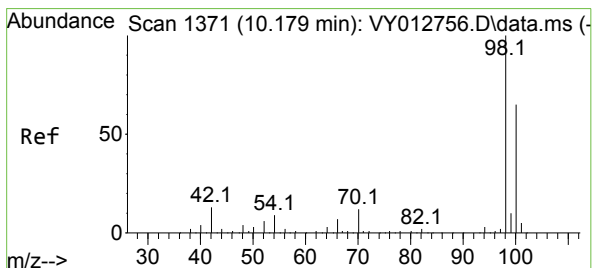
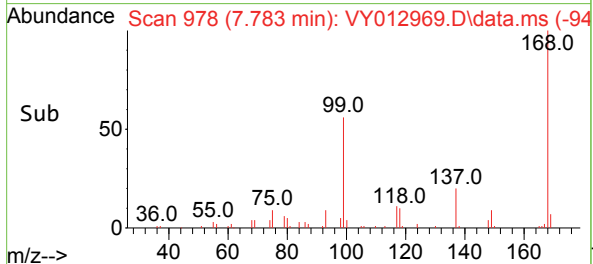
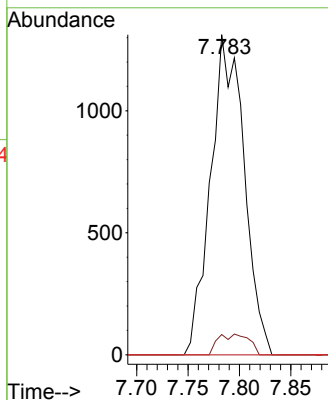
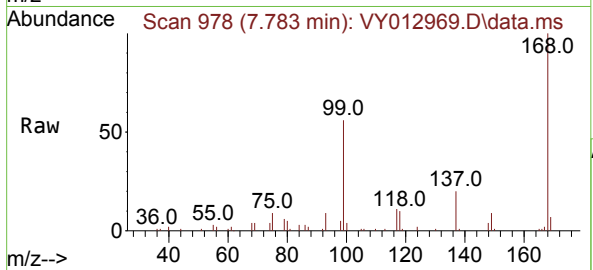




#38
 Carbon Tetrachloride
 Concen: 7.220 ug/l
 RT: 7.783 min Scan# 91
 Delta R.T. -0.116 min
 Lab File: VY012969.D
 Acq: 16 Mar 2023 14:29

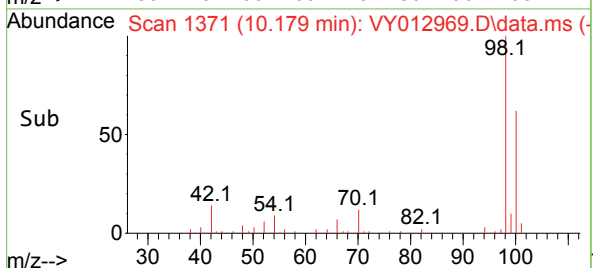
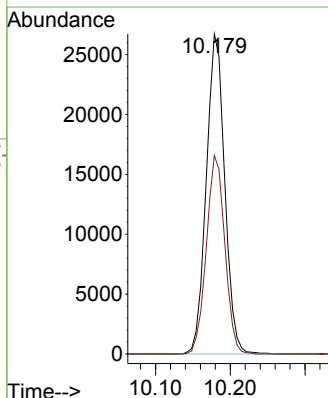
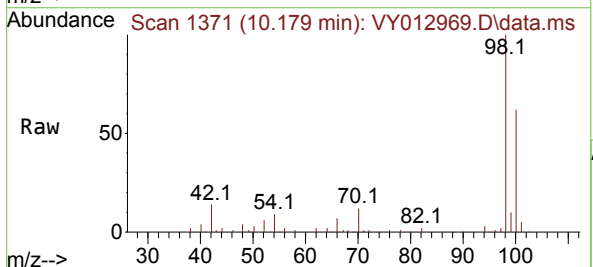
Instrument : MSVOA_Y
 ClientSampleId : CE-81-031423

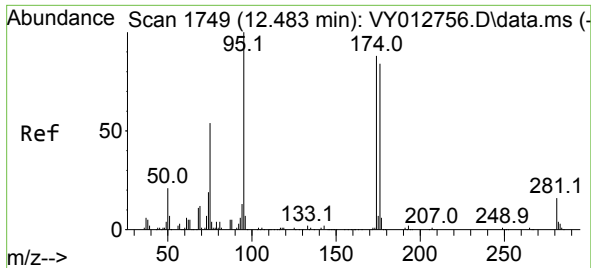
Tgt Ion	Resp	Lower	Upper
117	2967		
119	6.3	77.2	115.8#
121	0.0	24.7	37.1#



#50
 Toluene-d8
 Concen: 52.792 ug/l
 RT: 10.179 min Scan# 1371
 Delta R.T. -0.000 min
 Lab File: VY012969.D
 Acq: 16 Mar 2023 14:29

Tgt Ion	Resp	Lower	Upper
98	45830		
100	62.2	50.9	76.3





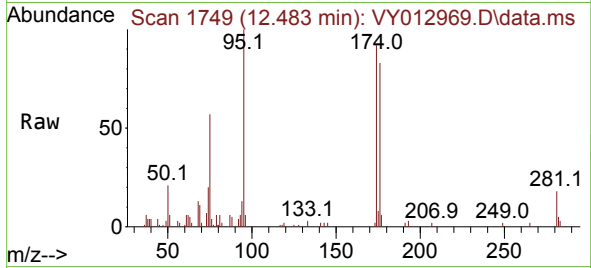
#62
 4-Bromofluorobenzene
 Concen: 33.108 ug/l
 RT: 12.483 min Scan# 1749
 Delta R.T. -0.000 min
 Lab File: VY012969.D
 Acq: 16 Mar 2023 14:29

Instrument :

MSVOA_Y

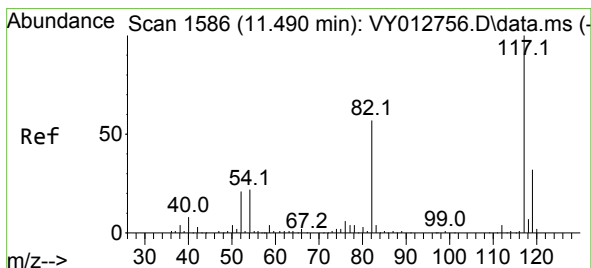
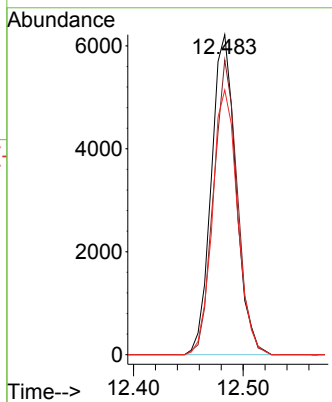
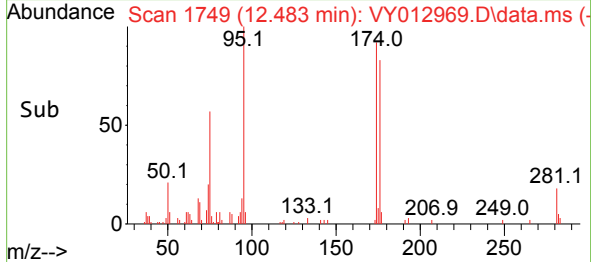
ClientSampleId :

CE-81-031423

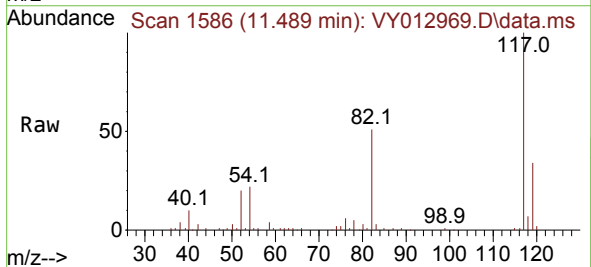


Tgt Ion: 95 Resp: 9701

Ion	Ratio	Lower	Upper
95	100		
174	89.2	0.0	176.6
176	84.3	0.0	170.2

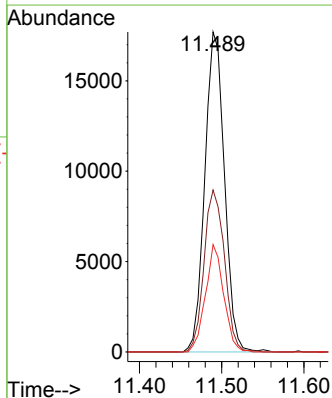
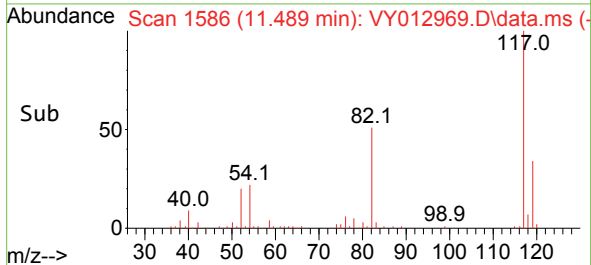


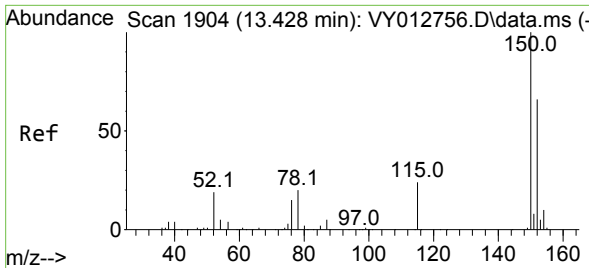
#63
 Chlorobenzene-d5
 Concen: 50.000 ug/l
 RT: 11.489 min Scan# 1586
 Delta R.T. -0.000 min
 Lab File: VY012969.D
 Acq: 16 Mar 2023 14:29



Tgt Ion: 117 Resp: 29388

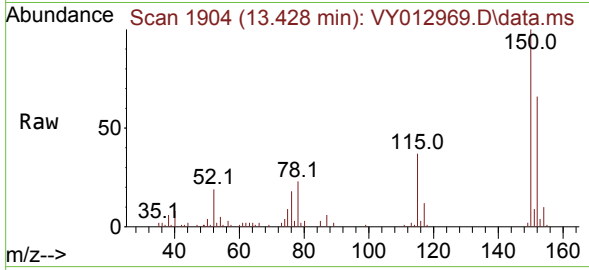
Ion	Ratio	Lower	Upper
117	100		
82	50.6	45.4	68.0
119	33.6	25.6	38.4



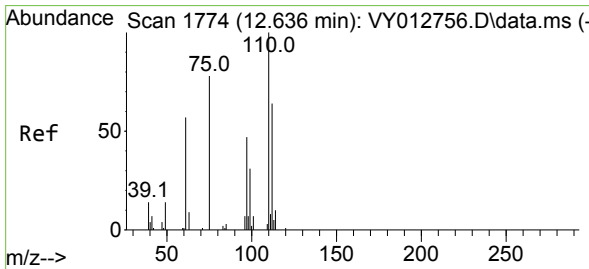
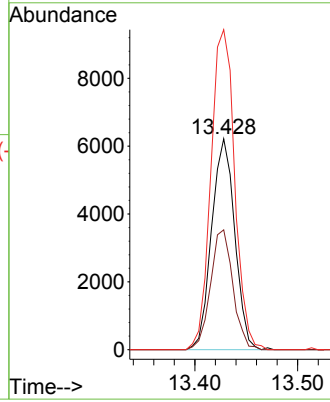
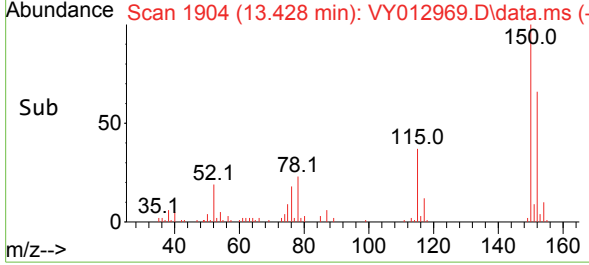


#72
 1,4-Dichlorobenzene-d4
 Concen: 50.000 ug/l
 RT: 13.428 min Scan# 1904
 Delta R.T. -0.000 min
 Lab File: VY012969.D
 Acq: 16 Mar 2023 14:29

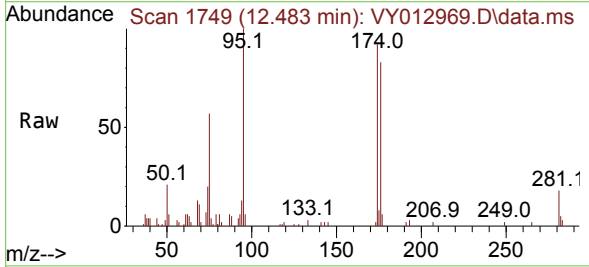
Instrument : MSVOA_Y
 ClientSampleId : CE-81-031423



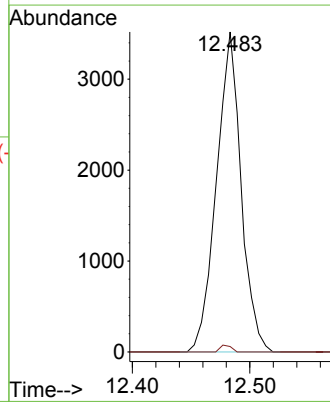
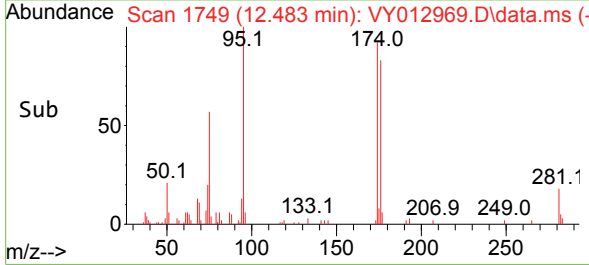
Tgt Ion:152 Resp: 9719
 Ion Ratio Lower Upper
 152 100
 115 55.1 27.1 81.3
 150 155.6 0.0 347.8

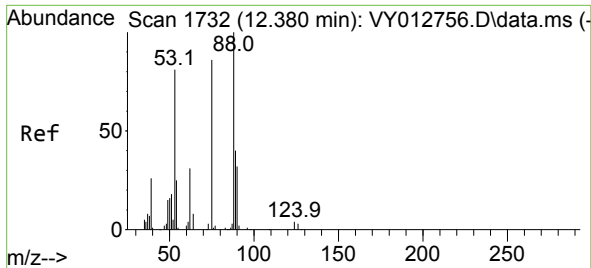


#76
 1,2,3-Trichloropropane
 Concen: 44.167 ug/l
 RT: 12.483 min Scan# 1749
 Delta R.T. -0.153 min
 Lab File: VY012969.D
 Acq: 16 Mar 2023 14:29



Tgt Ion: 75 Resp: 5126
 Ion Ratio Lower Upper
 75 100
 77 1.0 0.0 0.0#





#81
 trans-1,4-Dichloro-2-butene
 Concen: 91.515 ug/l
 RT: 12.483 min Scan# 11
 Delta R.T. 0.104 min
 Lab File: VY012969.D
 Acq: 16 Mar 2023 14:29

Instrument :
 MSVOA_Y
 ClientSampleId :
 CE-81-031423

Tgt Ion	Resp	Lower	Upper
75	5126		
75	100		
53	0.0	73.4	110.0#
89	0.0	36.6	55.0#

