

Data Path : Z:\voasrv\HPCHEM1\MSVOA_Y\Data\VY031723\
 Data File : VY012992.D
 Acq On : 17 Mar 2023 17:22
 Operator : KP/MD
 Sample : 01954-05
 Misc : 5.29g/5.0mL/MSVOA_Y/SOIL
 ALS Vial : 11 Sample Multiplier: 1

Instrument :
 MSVOA_Y
 ClientSampleId :

Quant Time: Mar 18 05:47:54 2023
 Quant Method : Z:\voasrv\HPCHEM1\MSVOA_Y\methods\82Y030223S.M
 Quant Title : SW846 8260
 QLast Update : Fri Mar 03 01:13:13 2023
 Response via : Initial Calibration

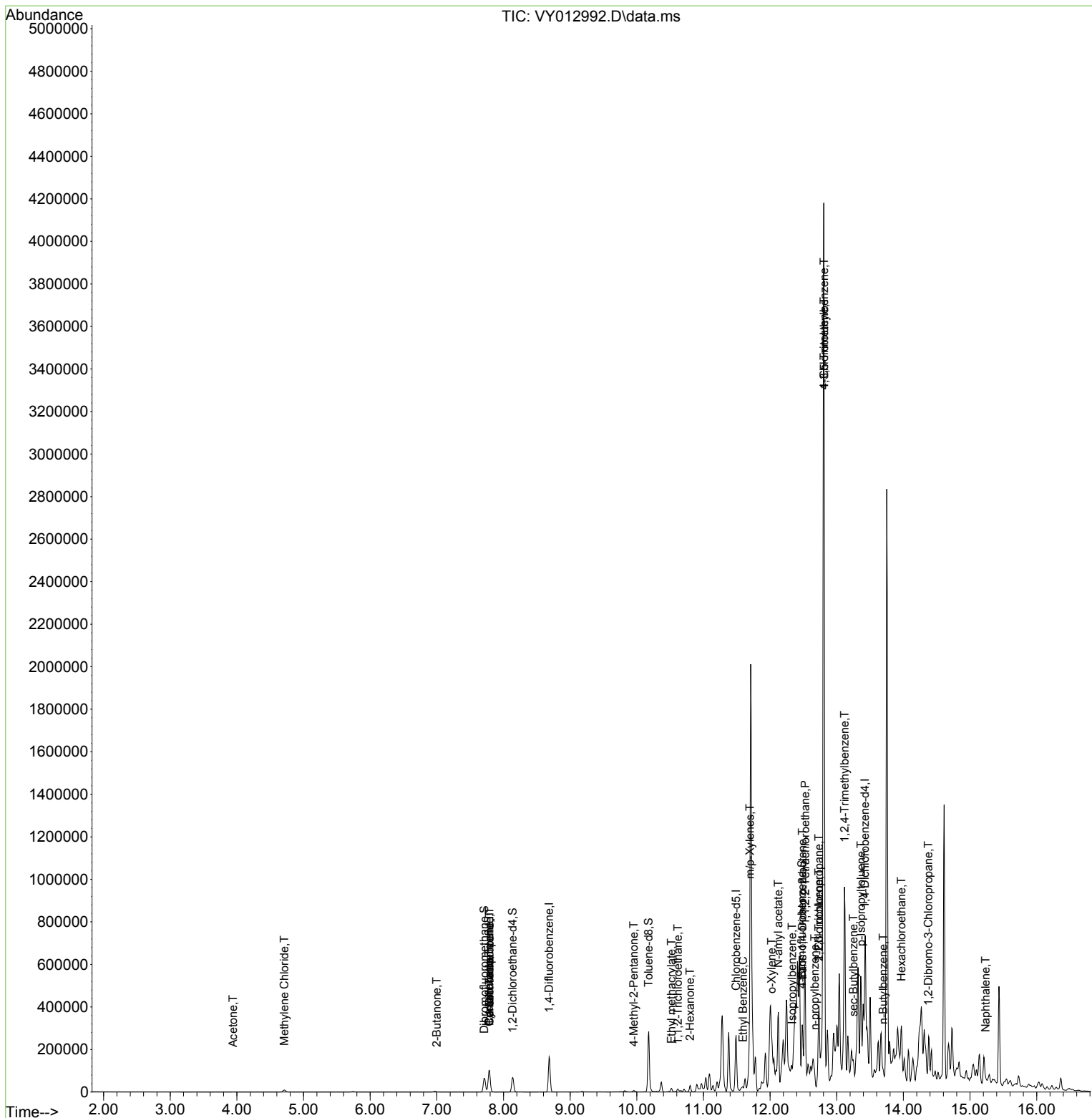
Compound	R.T.	QIon	Response	Conc	Units	Dev(Min)
Internal Standards						
1) Pentafluorobenzene	7.789	168	80047	50.000	ug/l	0.00
34) 1,4-Difluorobenzene	8.685	114	134863	50.000	ug/l	0.00
63) Chlorobenzene-d5	11.489	117	137288	50.000	ug/l	0.00
72) 1,4-Dichlorobenzene-d4	13.422	152	67362	50.000	ug/l	0.00
System Monitoring Compounds						
33) 1,2-Dichloroethane-d4	8.136	65	52816	66.455	ug/l	0.00
Spiked Amount	50.000	Range	50 - 163	Recovery	=	132.920%
35) Dibromofluoromethane	7.710	113	46949	57.684	ug/l	0.00
Spiked Amount	50.000	Range	54 - 147	Recovery	=	115.360%
50) Toluene-d8	10.179	98	167862	56.416	ug/l	0.00
Spiked Amount	50.000	Range	49 - 140	Recovery	=	112.840%
62) 4-Bromofluorobenzene	12.477	95	65186	64.908	ug/l	0.00
Spiked Amount	50.000	Range	25 - 144	Recovery	=	129.820%
Target Compounds						
					Qvalue	
11) Tert butyl alcohol	4.930	59	143	Below Cal	#	74
16) Acetone	3.942	43	791	2.536	ug/l #	44
20) Methylene Chloride	4.710	84	6299	1.394	ug/l	90
25) 2-Butanone	6.996	43	542	1.403	ug/l #	52
31) Cyclohexane	7.783	56	1711	1.124	ug/l #	17
36) 1,1-Dichloropropene	7.789	75	6092	4.467	ug/l #	49
38) Carbon Tetrachloride	7.789	117	7615	5.407	ug/l #	16
51) 4-Methyl-2-Pentanone	9.953	43	2580	3.101	ug/l #	38
55) 1,1,2-Trichloroethane	10.618	97	4905	6.340	ug/l #	21
56) Ethyl methacrylate	10.520	69	1973	1.913	ug/l #	12
59) 2-Hexanone	10.800	43	11477	18.981	ug/l #	30
67) Ethyl Benzene	11.593	91	8892	1.755	ug/l	94
68) m/p-Xylenes	11.697	106	46444	23.832	ug/l	95
69) o-Xylene	12.026	106	27033	14.863	ug/l	99
73) Isopropylbenzene	12.331	105	12397	2.597	ug/l	98
74) N-acyl acetate	12.123	43	73634	49.021	ug/l #	62
75) 1,1,2,2-Tetrachloroethane	12.526	83	4765	4.440	ug/l #	1
76) 1,2,3-Trichloropropane	12.733	75	1709	2.125	ug/l #	100
78) n-propylbenzene	12.672	91	35926	6.104	ug/l	98
79) 2-Chlorotoluene	12.733	91	23657	7.232	ug/l #	40
80) 1,3,5-Trimethylbenzene	12.812	105	224856	57.073	ug/l	99
81) trans-1,4-Dichloro-2-b...	12.483	75	32886	84.709	ug/l #	13
82) 4-Chlorotoluene	12.812	91	26321	7.773	ug/l #	46
84) 1,2,4-Trimethylbenzene	13.117	105	434244	112.716	ug/l	100
85) sec-Butylbenzene	13.251	105	17643	3.401	ug/l #	65
86) p-Isopropyltoluene	13.367	119	19701	4.647	ug/l	99
89) n-Butylbenzene	13.696	91	17526	4.318	ug/l #	68
90) Hexachloroethane	13.971	117	6264	7.093	ug/l #	10
92) 1,2-Dibromo-3-Chloropr...	14.373	75	185	1.067	ug/l #	10
95) Naphthalene	15.233	128	5969	2.393	ug/l #	81

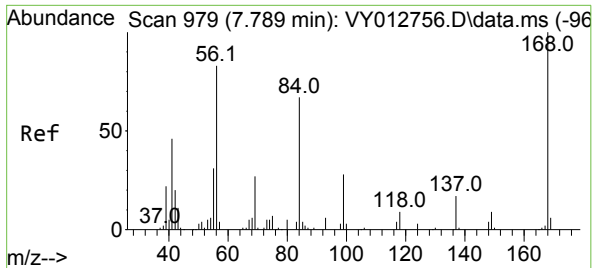
(#) = qualifier out of range (m) = manual integration (+) = signals summed

Data Path : Z:\voasrv\HPCHEM1\MSVOA_Y\Data\VY031723\
 Data File : VY012992.D
 Acq On : 17 Mar 2023 17:22
 Operator : KP/MD
 Sample : 01954-05
 Misc : 5.29g/5.0mL/MSVOA_Y/SOIL
 ALS Vial : 11 Sample Multiplier: 1

Instrument :
 MSVOA_Y
 ClientSampleId :

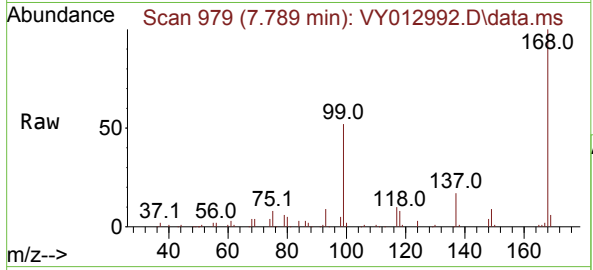
Quant Time: Mar 18 05:47:54 2023
 Quant Method : Z:\voasrv\HPCHEM1\MSVOA_Y\methods\82Y030223S.M
 Quant Title : SW846 8260
 QLast Update : Fri Mar 03 01:13:13 2023
 Response via : Initial Calibration



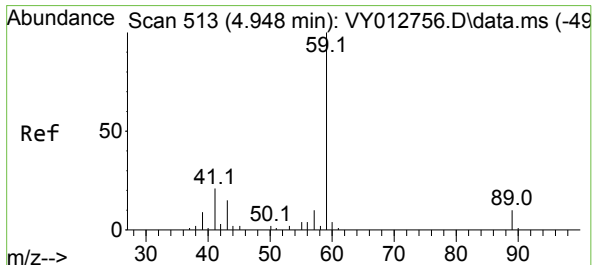
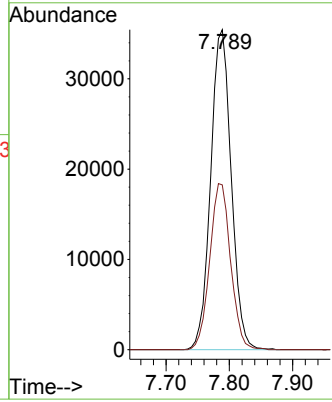
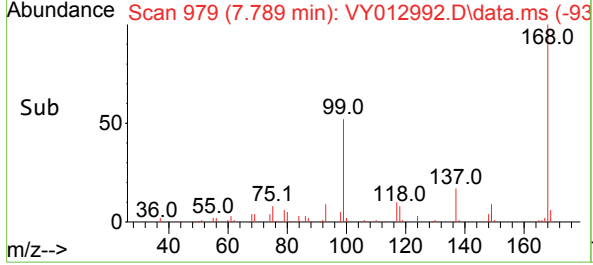


#1
 Pentafluorobenzene
 Concen: 50.000 ug/l
 RT: 7.789 min Scan# 91
 Delta R.T. -0.000 min
 Lab File: VY012992.D
 Acq: 17 Mar 2023 17:22

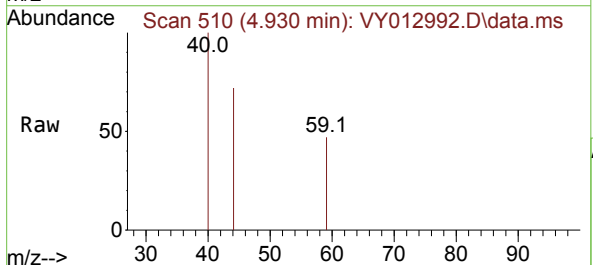
Instrument :
 MSVOA_Y
 ClientSampleId :



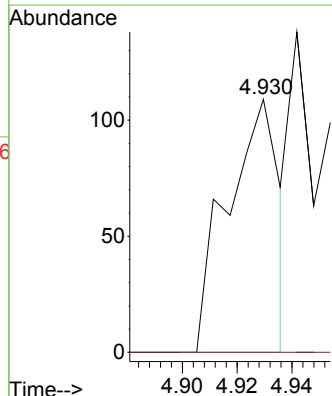
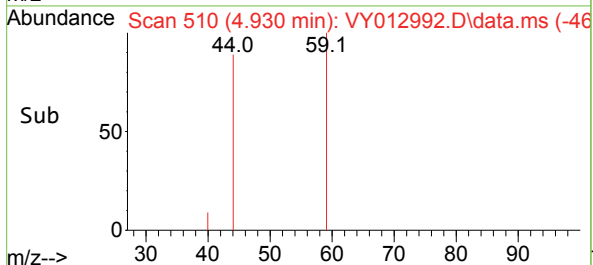
Tgt Ion:168 Resp: 80047
 Ion Ratio Lower Upper
 168 100
 99 51.5 41.7 62.5

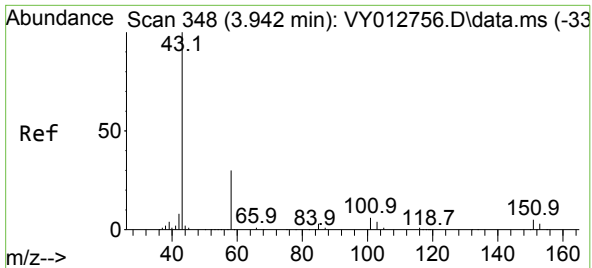


#11
 Tert butyl alcohol
 Concen: Below Cal
 RT: 4.930 min Scan# 510
 Delta R.T. -0.018 min
 Lab File: VY012992.D
 Acq: 17 Mar 2023 17:22



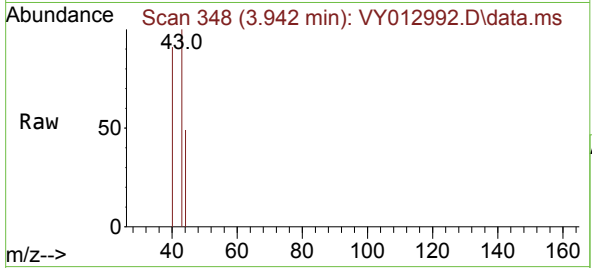
Tgt Ion: 59 Resp: 143
 Ion Ratio Lower Upper
 59 100
 57 0.0 7.7 11.5#



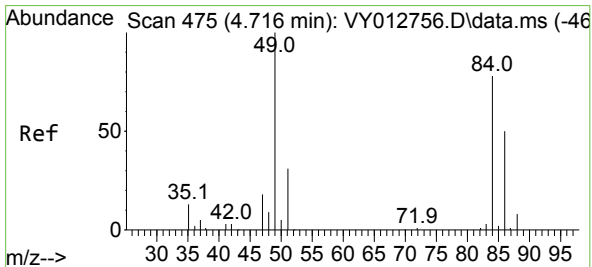
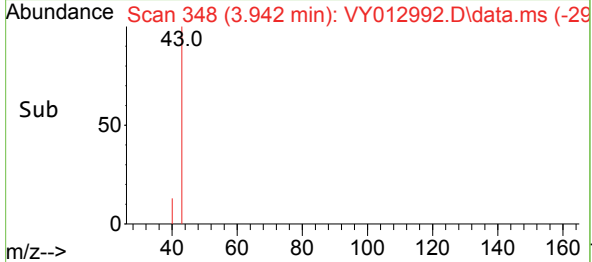
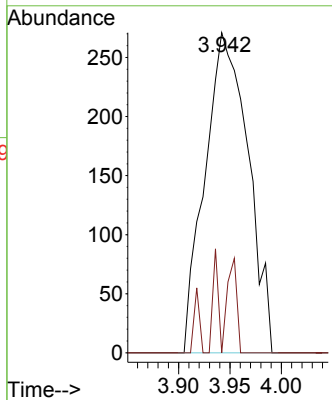


#16
 Acetone
 Concen: 2.536 ug/l
 RT: 3.942 min Scan# 34
 Delta R.T. -0.000 min
 Lab File: VY012992.D
 Acq: 17 Mar 2023 17:22

Instrument :
 MSVOA_Y
 ClientSampleId :

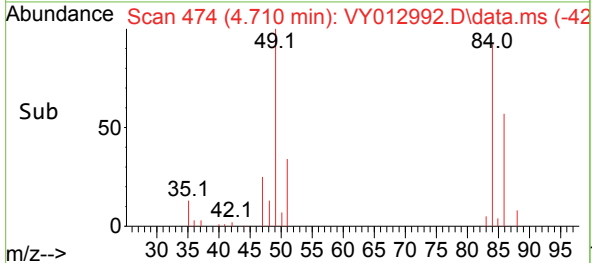
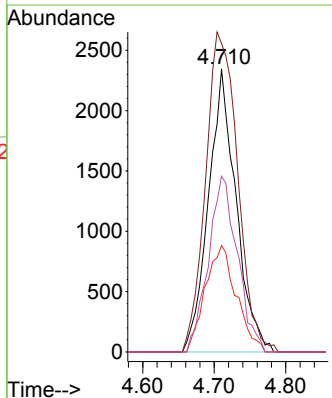
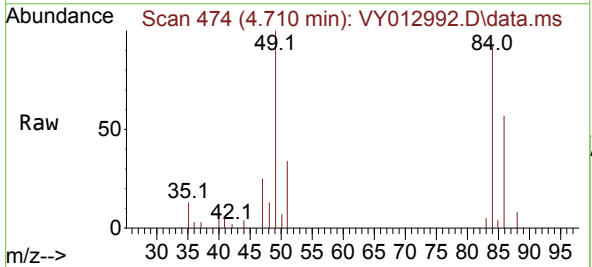


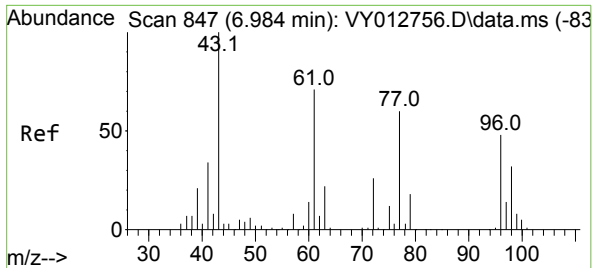
Tgt Ion: 43 Resp: 791
 Ion Ratio Lower Upper
 43 100
 58 0.0 24.2 36.2#



#20
 Methylene Chloride
 Concen: 1.394 ug/l
 RT: 4.710 min Scan# 474
 Delta R.T. -0.006 min
 Lab File: VY012992.D
 Acq: 17 Mar 2023 17:22

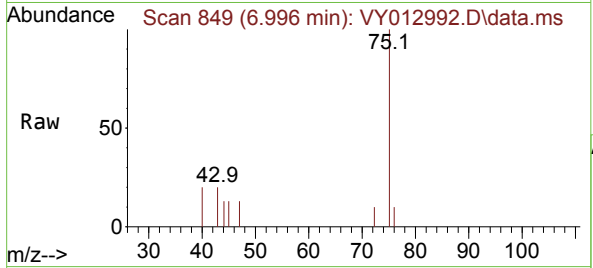
Tgt Ion: 84 Resp: 6299
 Ion Ratio Lower Upper
 84 100
 49 109.0 102.6 154.0
 51 37.6 31.9 47.9
 86 62.1 51.0 76.6



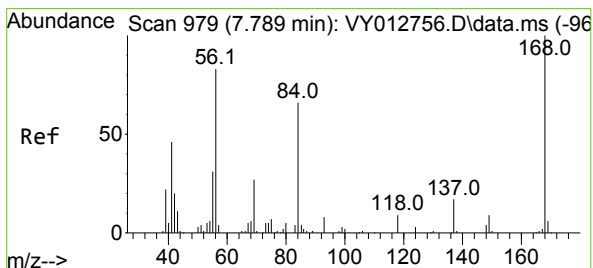
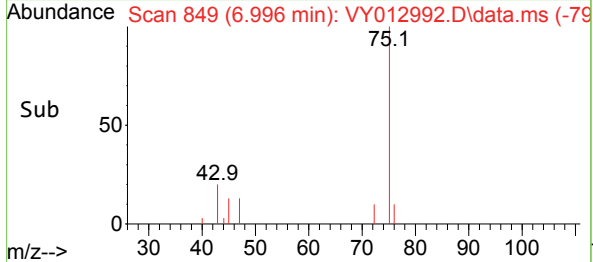
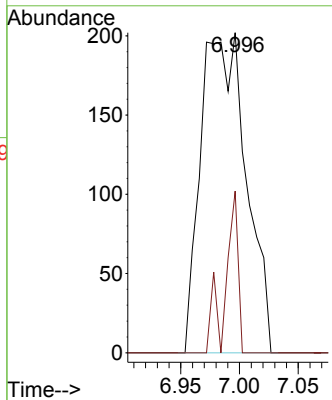


#25
 2-Butanone
 Concen: 1.403 ug/l
 RT: 6.996 min Scan# 849
 Delta R.T. 0.012 min
 Lab File: VY012992.D
 Acq: 17 Mar 2023 17:22

Instrument :
 MSVOA_Y
 ClientSampleId :

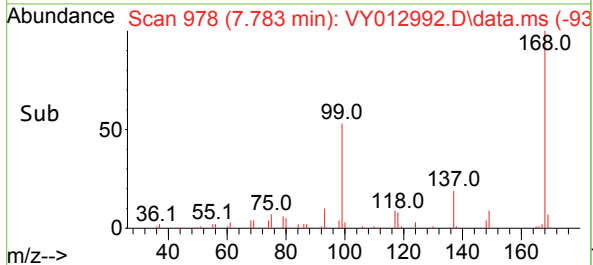
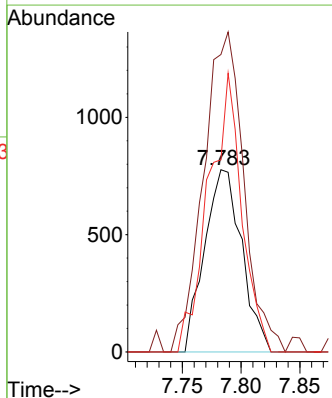
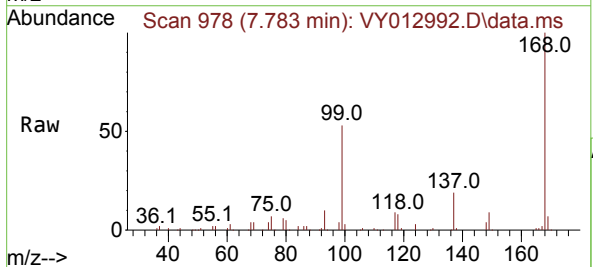


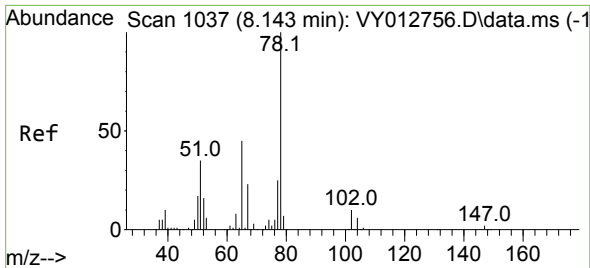
Tgt Ion: 43 Resp: 542
 Ion Ratio Lower Upper
 43 100
 72 50.5 21.0 31.4#



#31
 Cyclohexane
 Concen: 1.124 ug/l
 RT: 7.783 min Scan# 978
 Delta R.T. -0.006 min
 Lab File: VY012992.D
 Acq: 17 Mar 2023 17:22

Tgt Ion: 56 Resp: 1711
 Ion Ratio Lower Upper
 56 100
 69 154.6 25.7 38.5#
 84 105.4 64.3 96.5#

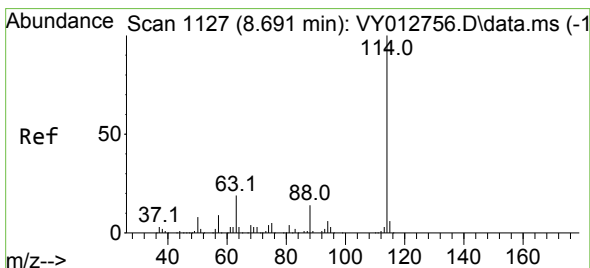
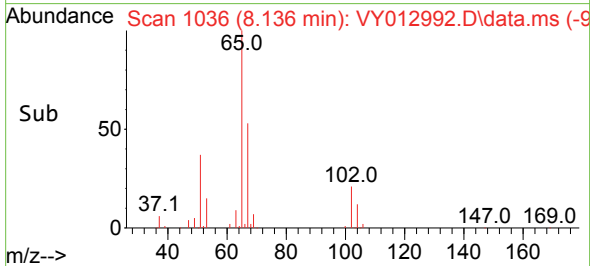
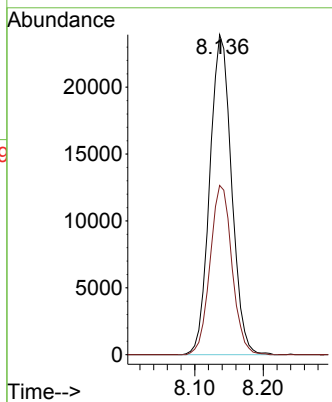
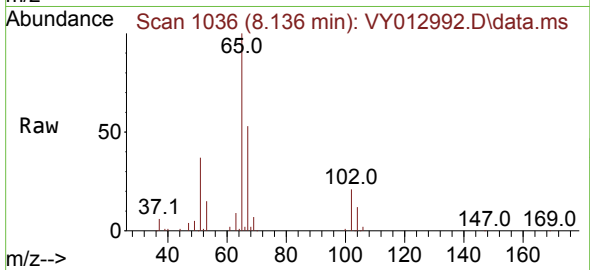




#33
 1,2-Dichloroethane-d4
 Concen: 66.455 ug/l
 RT: 8.136 min Scan# 1036
 Delta R.T. -0.007 min
 Lab File: VY012992.D
 Acq: 17 Mar 2023 17:22

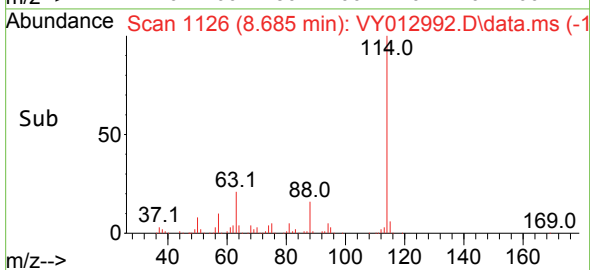
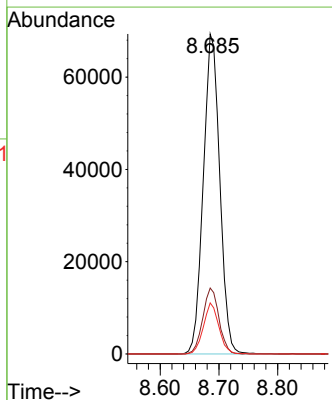
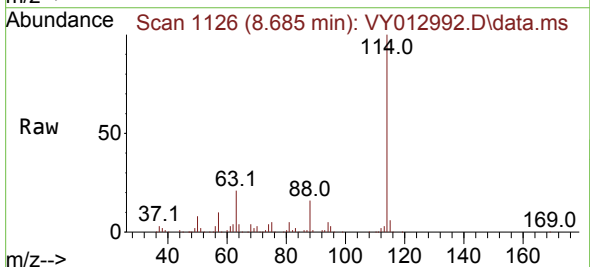
Instrument : MSVOA_Y
 ClientSampleId :

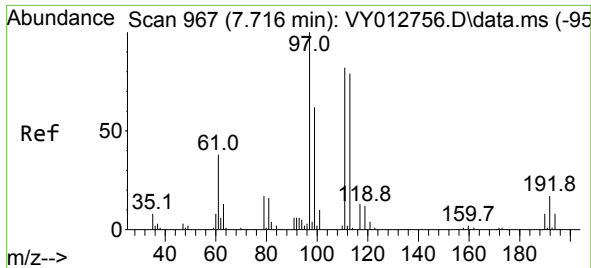
Tgt Ion: 65 Resp: 52816
 Ion Ratio Lower Upper
 65 100
 67 53.1 0.0 104.0



#34
 1,4-Difluorobenzene
 Concen: 50.000 ug/l
 RT: 8.685 min Scan# 1126
 Delta R.T. -0.006 min
 Lab File: VY012992.D
 Acq: 17 Mar 2023 17:22

Tgt Ion:114 Resp: 134863
 Ion Ratio Lower Upper
 114 100
 63 20.6 0.0 37.4
 88 16.0 0.0 28.6

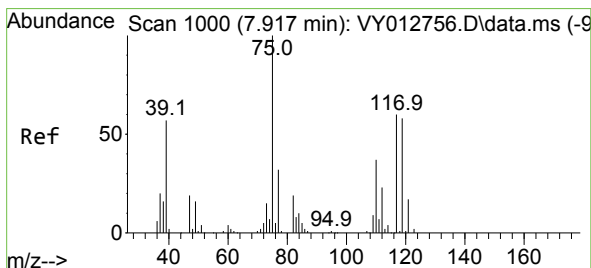
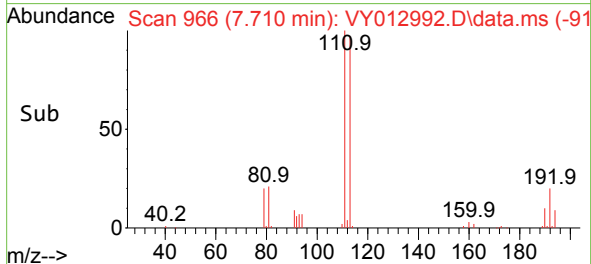
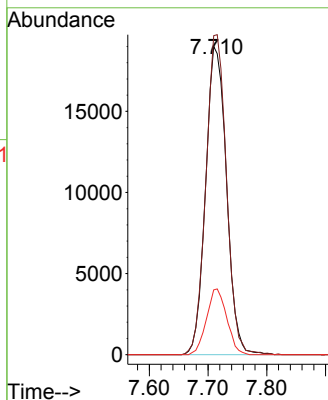
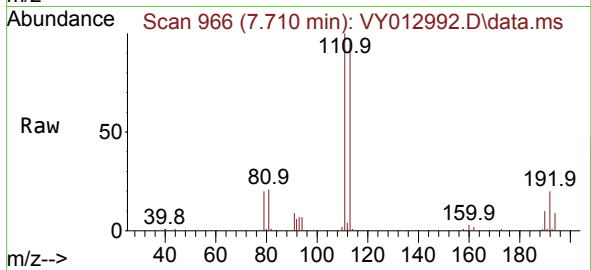




#35
 Dibromofluoromethane
 Concen: 57.684 ug/l
 RT: 7.710 min Scan# 900
 Delta R.T. -0.006 min
 Lab File: VY012992.D
 Acq: 17 Mar 2023 17:22

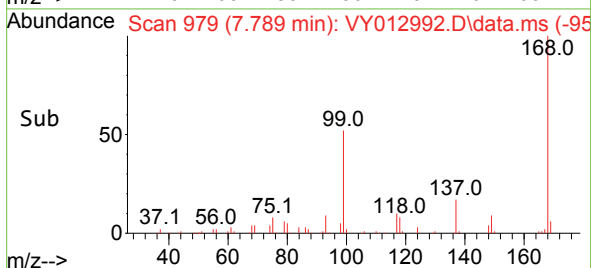
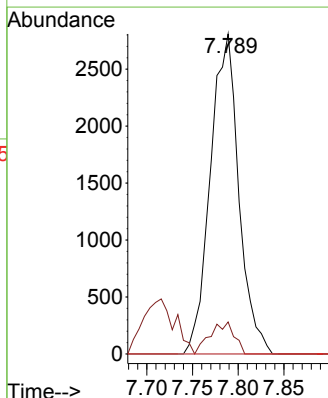
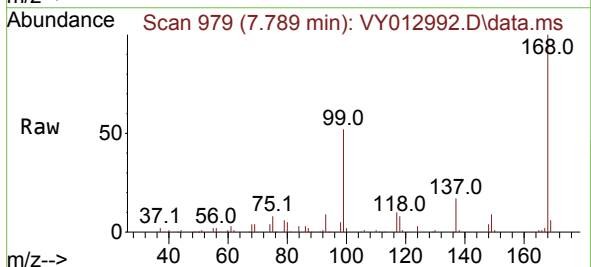
Instrument :
 MSVOA_Y
 ClientSampleId :

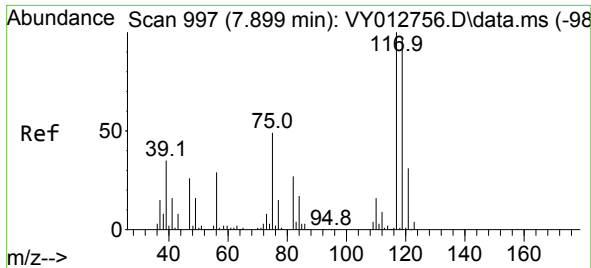
Tgt Ion	Resp	Lower	Upper
113	46949		
113	100		
111	102.3	82.2	123.2
192	20.7	16.8	25.2



#36
 1,1-Dichloropropene
 Concen: 4.467 ug/l
 RT: 7.789 min Scan# 979
 Delta R.T. -0.128 min
 Lab File: VY012992.D
 Acq: 17 Mar 2023 17:22

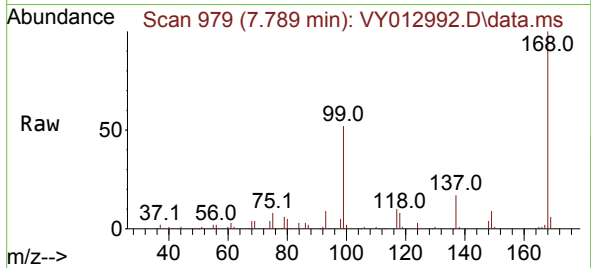
Tgt Ion	Resp	Lower	Upper
75	6092		
75	100		
110	8.5	17.8	53.3#
77	0.0	25.0	37.4#



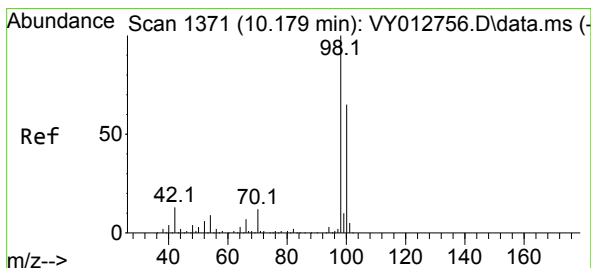
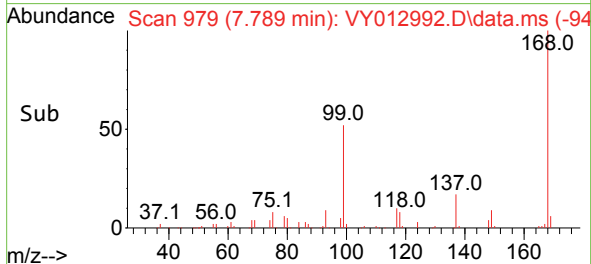
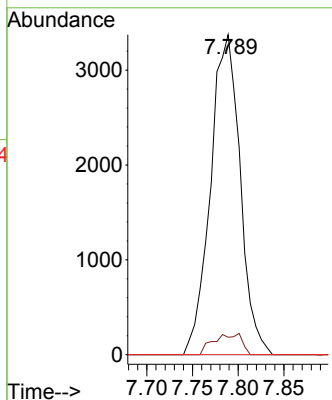


#38
 Carbon Tetrachloride
 Concen: 5.407 ug/l
 RT: 7.789 min Scan# 91
 Delta R.T. -0.110 min
 Lab File: VY012992.D
 Acq: 17 Mar 2023 17:22

Instrument :
 MSVOA_Y
 ClientSampleId :

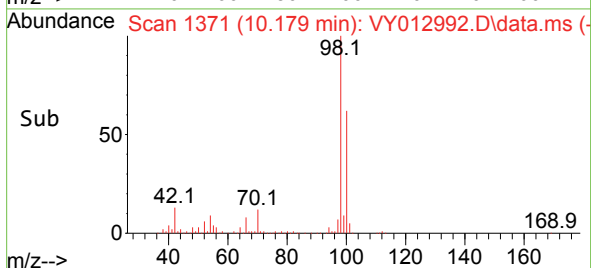
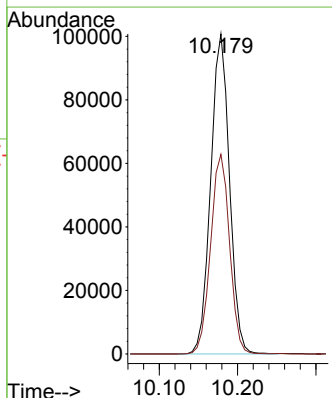
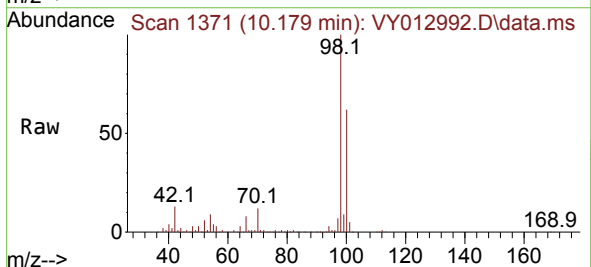


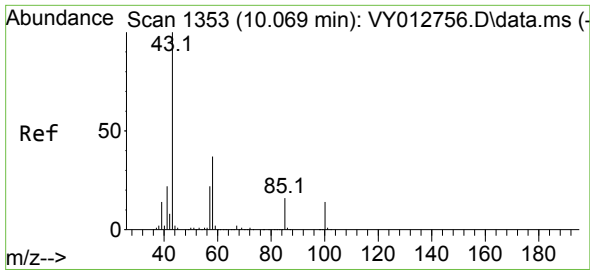
Tgt Ion:117 Resp: 7615
 Ion Ratio Lower Upper
 117 100
 119 5.5 77.2 115.8#
 121 0.0 24.7 37.1#



#50
 Toluene-d8
 Concen: 56.416 ug/l
 RT: 10.179 min Scan# 1371
 Delta R.T. -0.000 min
 Lab File: VY012992.D
 Acq: 17 Mar 2023 17:22

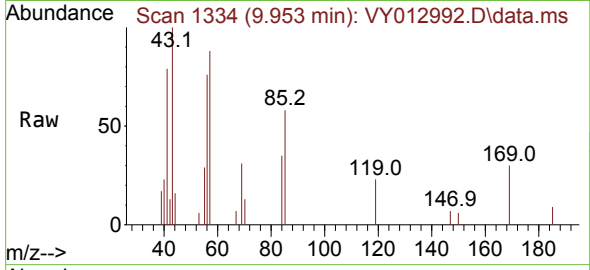
Tgt Ion: 98 Resp: 167862
 Ion Ratio Lower Upper
 98 100
 100 63.0 50.9 76.3



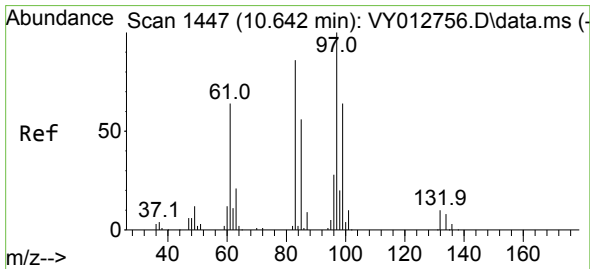
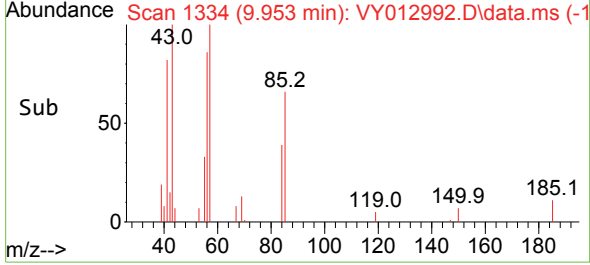
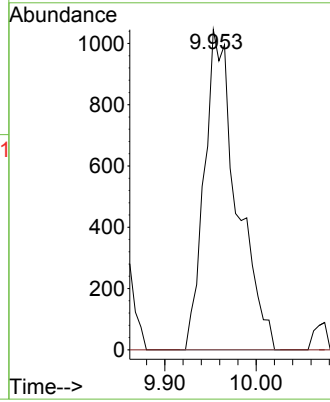


#51
 4-Methyl-2-Pentanone
 Concen: 3.101 ug/l
 RT: 9.953 min Scan# 11
 Delta R.T. -0.116 min
 Lab File: VY012992.D
 Acq: 17 Mar 2023 17:22

Instrument :
 MSVOA_Y
 ClientSampleId :

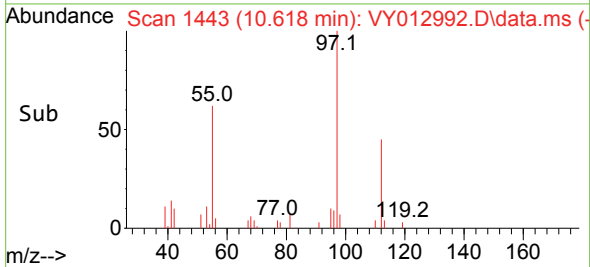
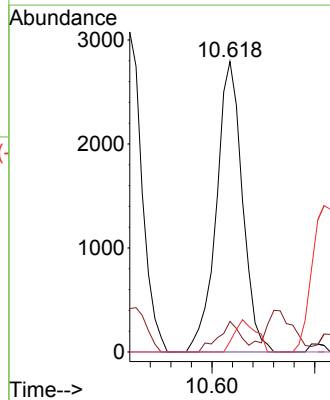
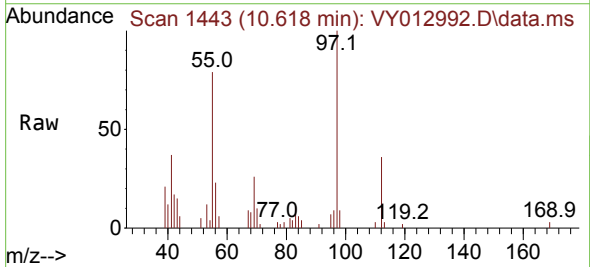


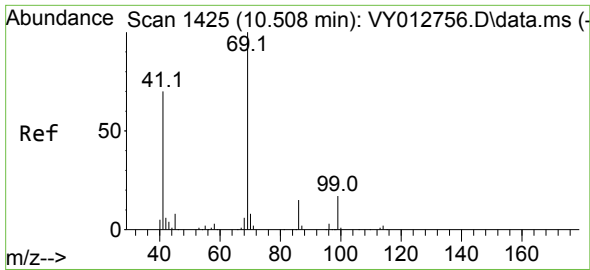
Tgt Ion: 43 Resp: 2580
 Ion Ratio Lower Upper
 43 100
 58 0.0 29.8 44.6#



#55
 1,1,2-Trichloroethane
 Concen: 6.340 ug/l
 RT: 10.618 min Scan# 1443
 Delta R.T. -0.025 min
 Lab File: VY012992.D
 Acq: 17 Mar 2023 17:22

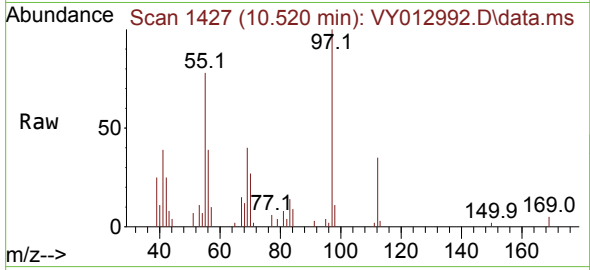
Tgt Ion: 97 Resp: 4905
 Ion Ratio Lower Upper
 97 100
 83 10.5 69.0 103.6#
 85 3.6 44.9 67.3#
 99 0.0 50.8 76.2#



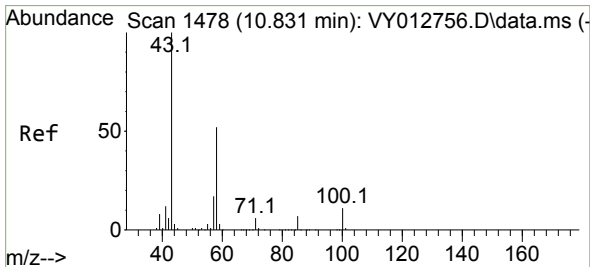
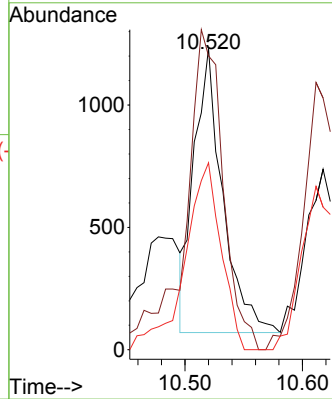
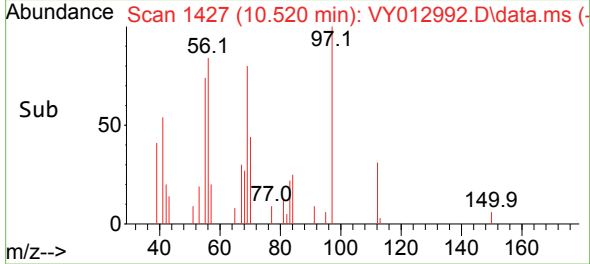


#56
 Ethyl methacrylate
 Concen: 1.913 ug/l
 RT: 10.520 min Scan# 1425
 Delta R.T. 0.012 min
 Lab File: VY012992.D
 Acq: 17 Mar 2023 17:22

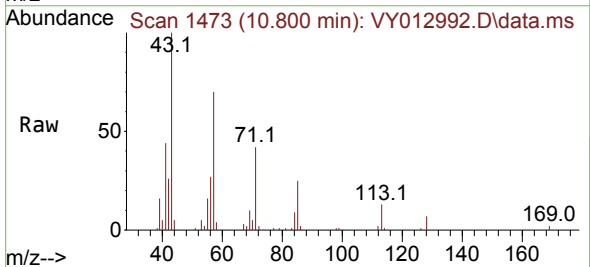
Instrument :
 MSVOA_Y
 ClientSampleId :



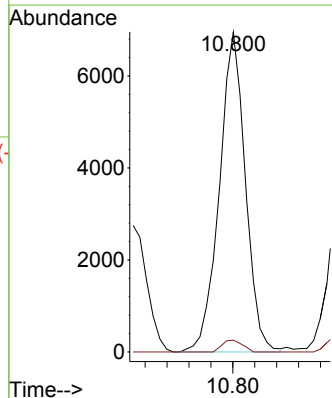
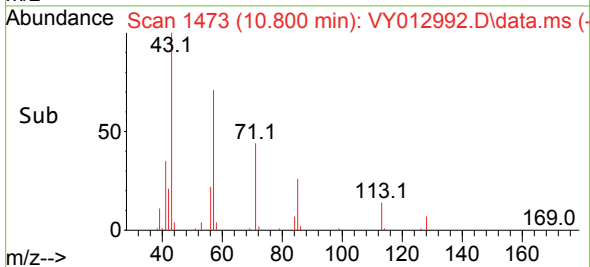
Tgt Ion: 69 Resp: 1973
 Ion Ratio Lower Upper
 69 100
 41 149.2 56.4 84.6#
 39 83.1 30.8 46.2#

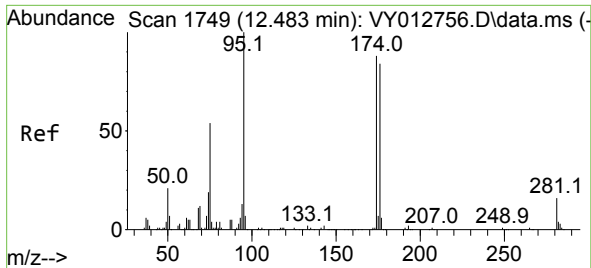


#59
 2-Hexanone
 Concen: 18.981 ug/l
 RT: 10.800 min Scan# 1473
 Delta R.T. -0.031 min
 Lab File: VY012992.D
 Acq: 17 Mar 2023 17:22



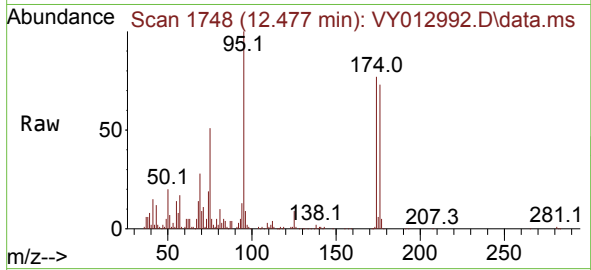
Tgt Ion: 43 Resp: 11477
 Ion Ratio Lower Upper
 43 100
 58 2.9 25.9 77.8#



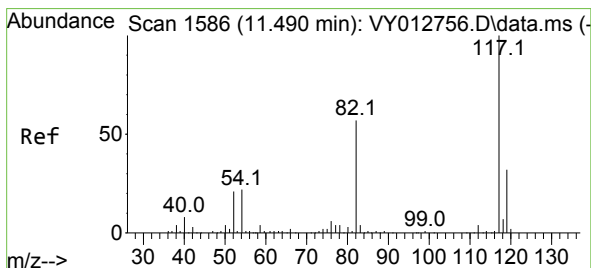
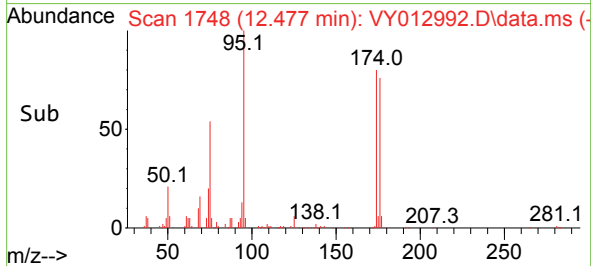
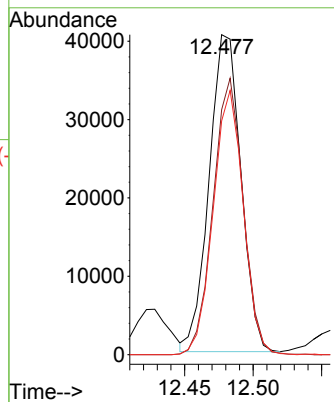


#62
 4-Bromofluorobenzene
 Concen: 64.908 ug/l
 RT: 12.477 min Scan# 1748
 Delta R.T. -0.006 min
 Lab File: VY012992.D
 Acq: 17 Mar 2023 17:22

Instrument : MSVOA_Y
 ClientSampleId :

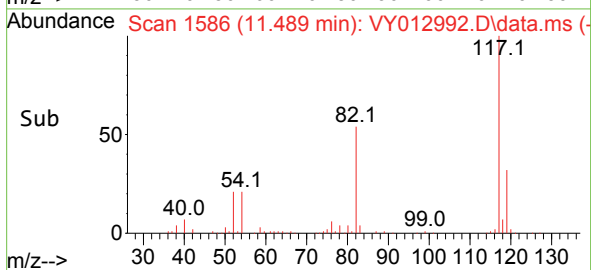
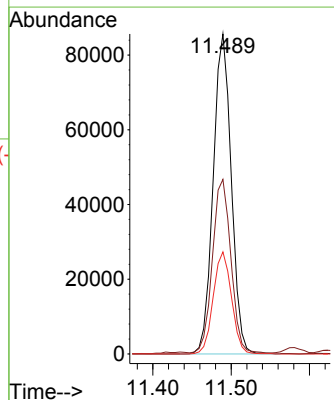
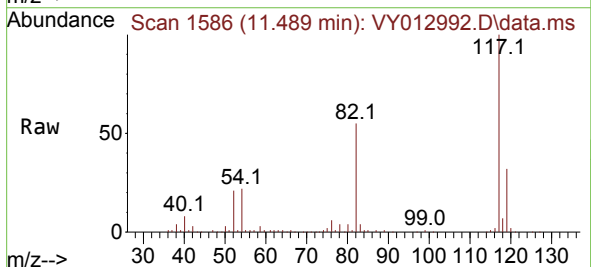


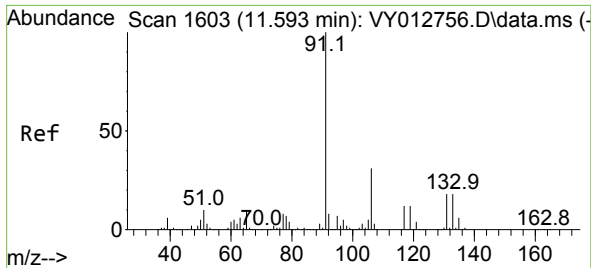
Tgt Ion: 95 Resp: 65186
 Ion Ratio Lower Upper
 95 100
 174 82.8 0.0 176.6
 176 79.2 0.0 170.2



#63
 Chlorobenzene-d5
 Concen: 50.000 ug/l
 RT: 11.489 min Scan# 1586
 Delta R.T. -0.000 min
 Lab File: VY012992.D
 Acq: 17 Mar 2023 17:22

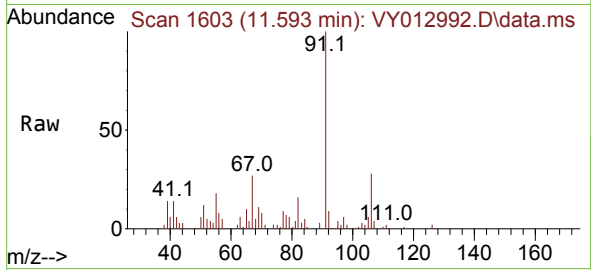
Tgt Ion: 117 Resp: 137288
 Ion Ratio Lower Upper
 117 100
 82 54.0 45.4 68.0
 119 31.9 25.6 38.4



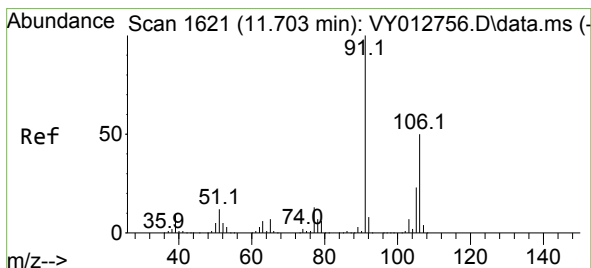
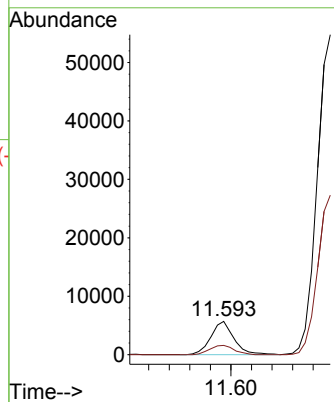
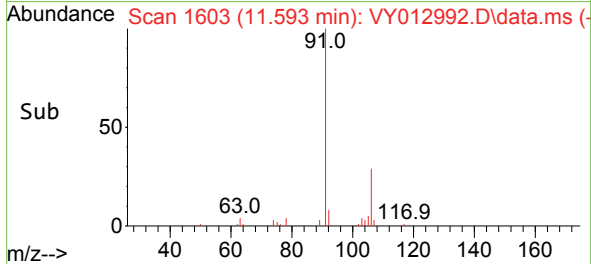


#67
 Ethyl Benzene
 Concen: 1.755 ug/l
 RT: 11.593 min Scan# 1603
 Delta R.T. -0.000 min
 Lab File: VY012992.D
 Acq: 17 Mar 2023 17:22

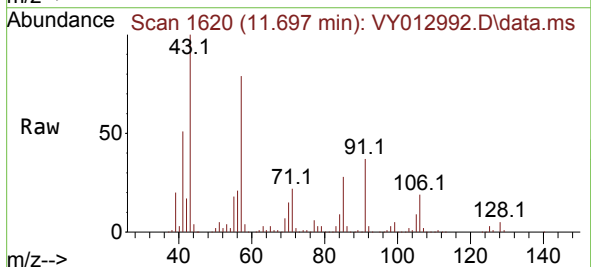
Instrument : MSVOA_Y
 ClientSampleId :



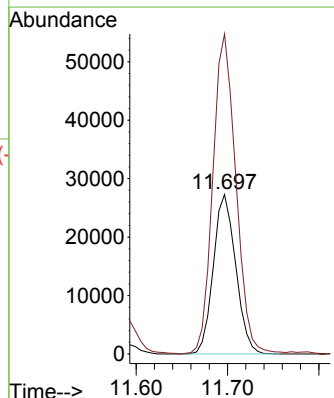
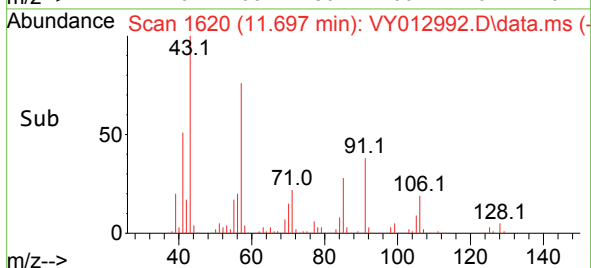
Tgt Ion: 91 Resp: 8892
 Ion Ratio Lower Upper
 91 100
 106 27.9 25.1 37.7

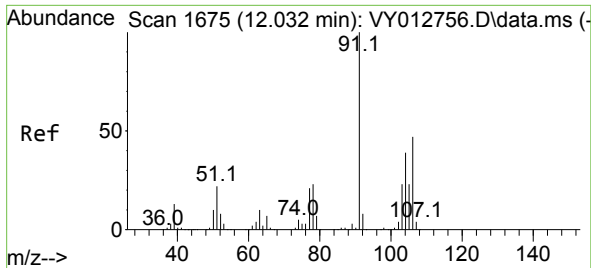


#68
 m/p-Xylenes
 Concen: 23.832 ug/l
 RT: 11.697 min Scan# 1620
 Delta R.T. -0.006 min
 Lab File: VY012992.D
 Acq: 17 Mar 2023 17:22



Tgt Ion: 106 Resp: 46444
 Ion Ratio Lower Upper
 106 100
 91 206.7 159.8 239.8

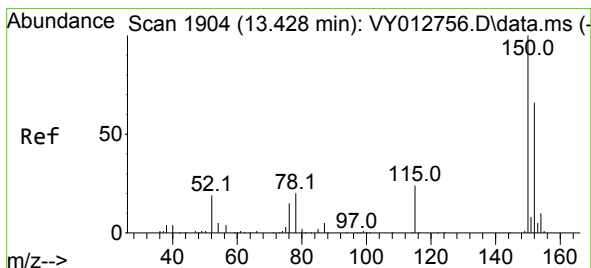
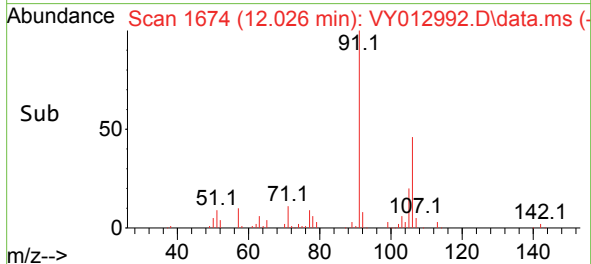
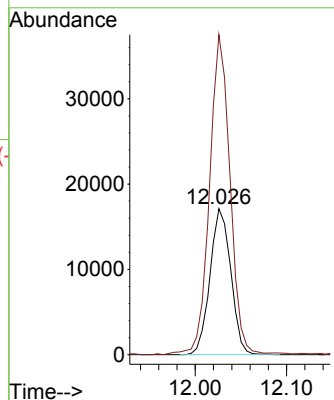
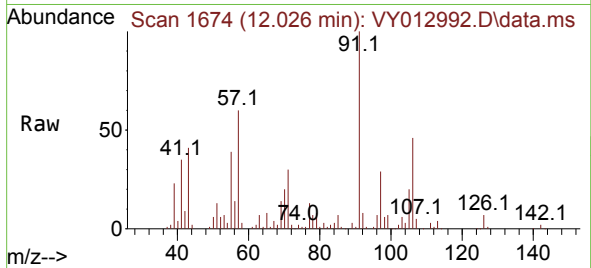




#69
 o-Xylene
 Concen: 14.863 ug/l
 RT: 12.026 min Scan# 1
 Delta R.T. -0.006 min
 Lab File: VY012992.D
 Acq: 17 Mar 2023 17:22

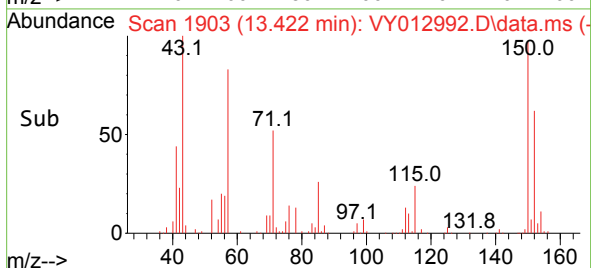
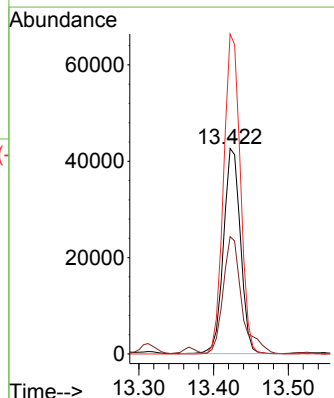
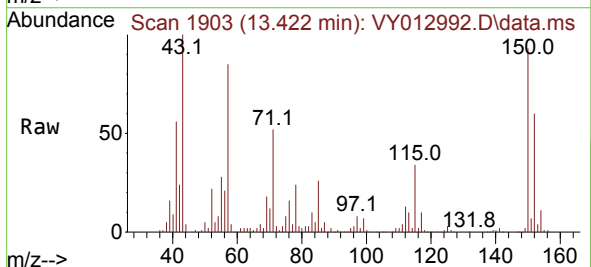
Instrument :
 MSVOA_Y
 ClientSampleId :

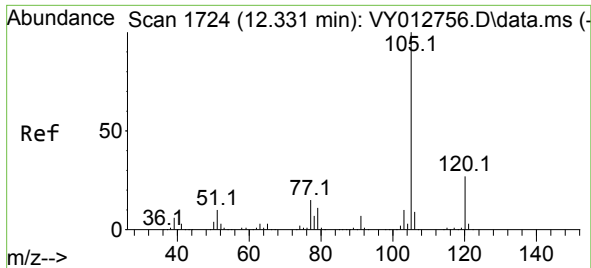
Tgt Ion:106 Resp: 27033
 Ion Ratio Lower Upper
 106 100
 91 216.1 107.2 321.6



#72
 1,4-Dichlorobenzene-d4
 Concen: 50.000 ug/l
 RT: 13.422 min Scan# 1903
 Delta R.T. -0.006 min
 Lab File: VY012992.D
 Acq: 17 Mar 2023 17:22

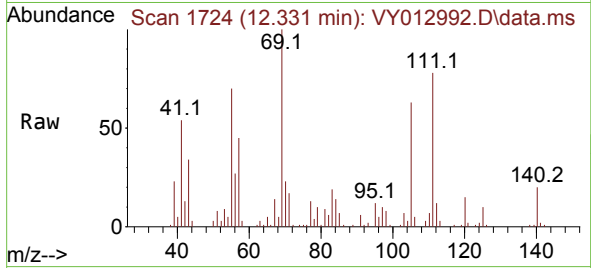
Tgt Ion:152 Resp: 67362
 Ion Ratio Lower Upper
 152 100
 115 62.6 27.1 81.3
 150 154.0 0.0 347.8



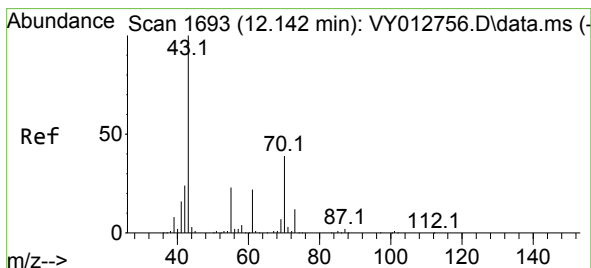
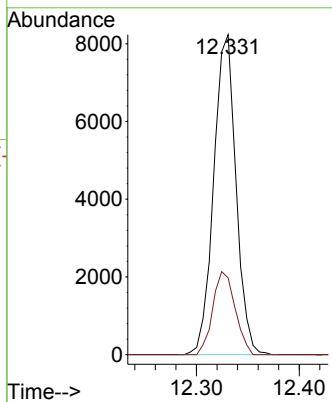
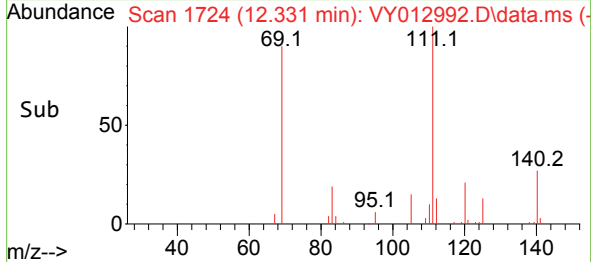


#73
 Isopropylbenzene
 Concen: 2.597 ug/l
 RT: 12.331 min Scan# 1724
 Delta R.T. -0.000 min
 Lab File: VY012992.D
 Acq: 17 Mar 2023 17:22

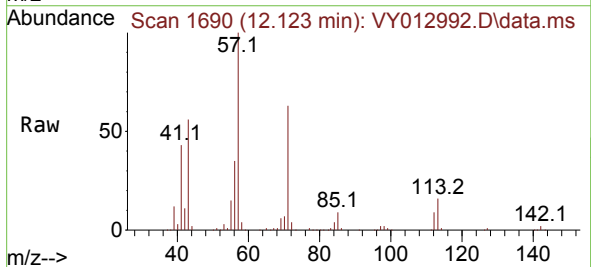
Instrument : MSVOA_Y
 ClientSampleId :



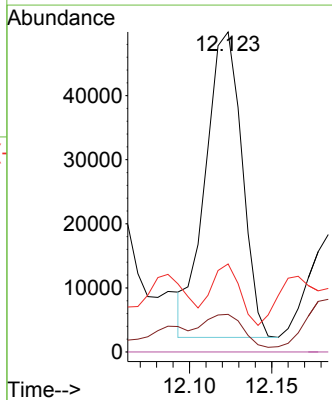
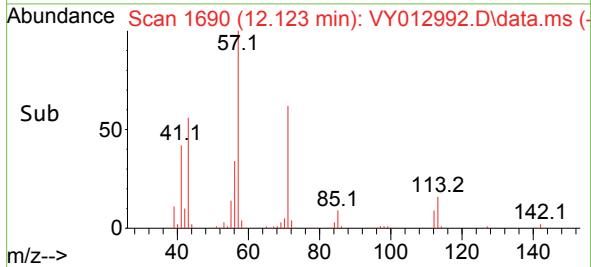
Tgt Ion:105 Resp: 12397
 Ion Ratio Lower Upper
 105 100
 120 26.0 13.4 40.2

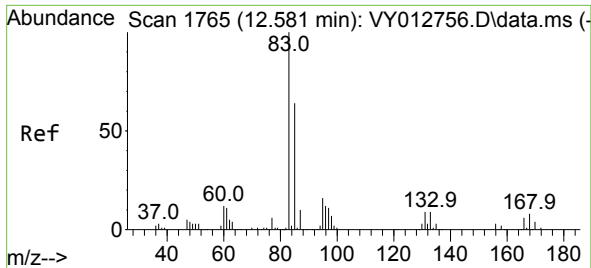


#74
 N-amy1 acetate
 Concen: 49.021 ug/l
 RT: 12.123 min Scan# 1690
 Delta R.T. -0.018 min
 Lab File: VY012992.D
 Acq: 17 Mar 2023 17:22



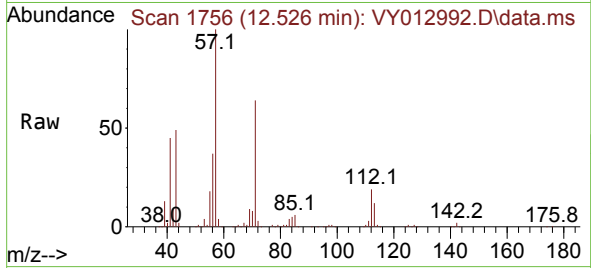
Tgt Ion: 43 Resp: 73634
 Ion Ratio Lower Upper
 43 100
 70 11.9 31.6 47.4#
 55 15.5 18.8 28.2#
 61 0.0 17.8 26.8#



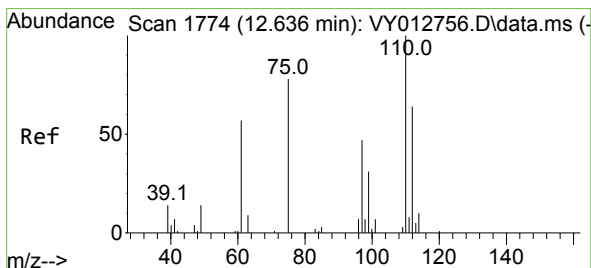
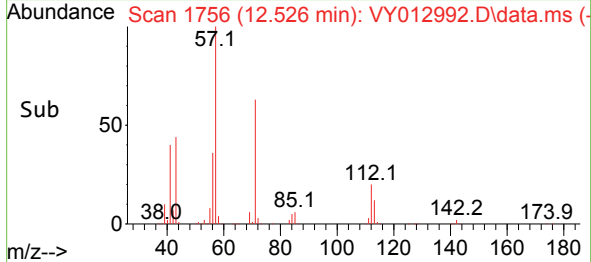
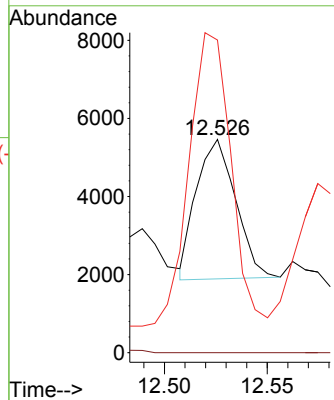


#75
 1,1,2,2-Tetrachloroethane
 Concen: 4.440 ug/l
 RT: 12.526 min Scan# 1756
 Delta R.T. -0.055 min
 Lab File: VY012992.D
 Acq: 17 Mar 2023 17:22

Instrument : MSVOA_Y
 ClientSampleId :

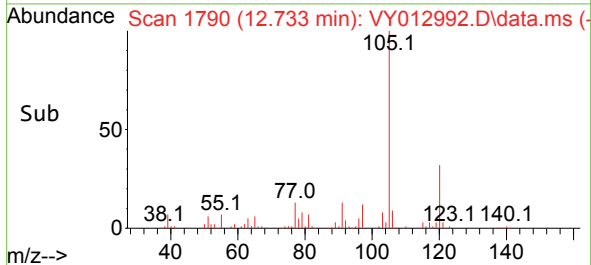
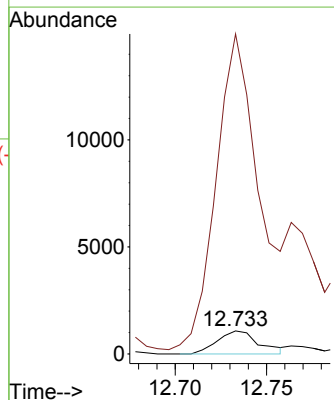
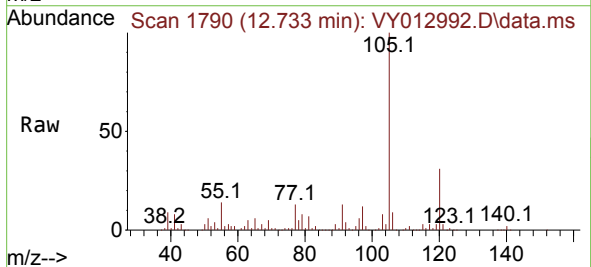


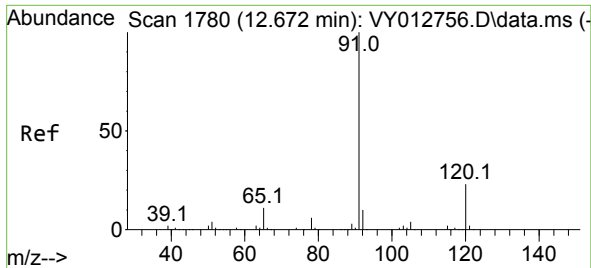
Tgt Ion: 83 Resp: 4765
 Ion Ratio Lower Upper
 83 100
 131 0.0 5.1 15.2#
 85 223.4 31.8 95.3#



#76
 1,2,3-Trichloropropane
 Concen: 2.125 ug/l
 RT: 12.733 min Scan# 1790
 Delta R.T. 0.097 min
 Lab File: VY012992.D
 Acq: 17 Mar 2023 17:22

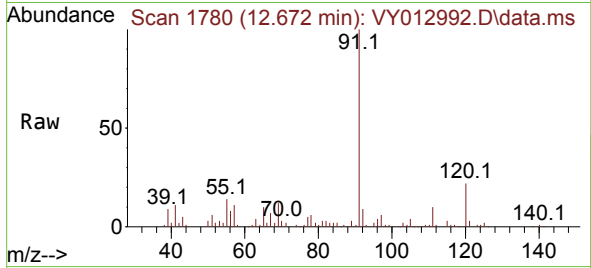
Tgt Ion: 75 Resp: 1709
 Ion Ratio Lower Upper
 75 100
 77 1409.4 0.0 0.0#



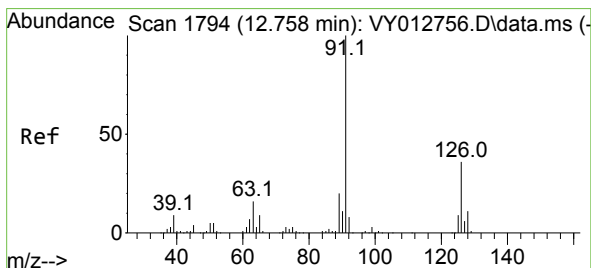
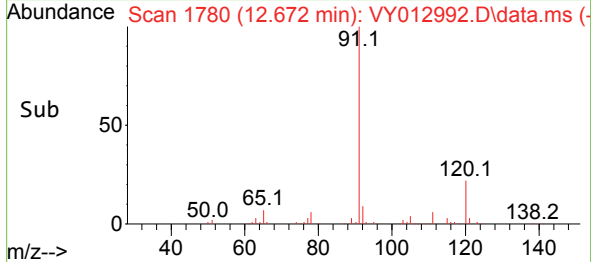
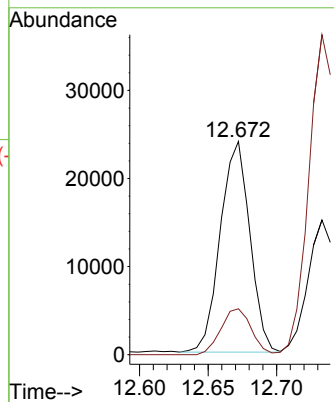


#78
 n-propylbenzene
 Concen: 6.104 ug/l
 RT: 12.672 min Scan# 1780
 Delta R.T. -0.000 min
 Lab File: VY012992.D
 Acq: 17 Mar 2023 17:22

Instrument : MSVOA_Y
 ClientSampleId :

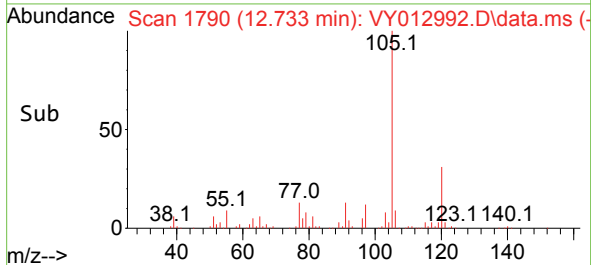
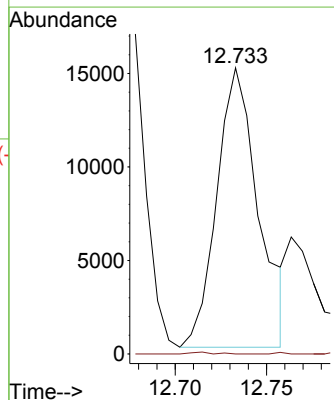
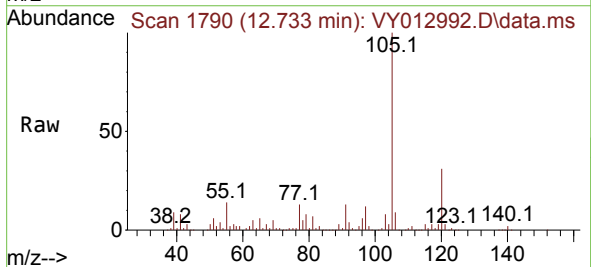


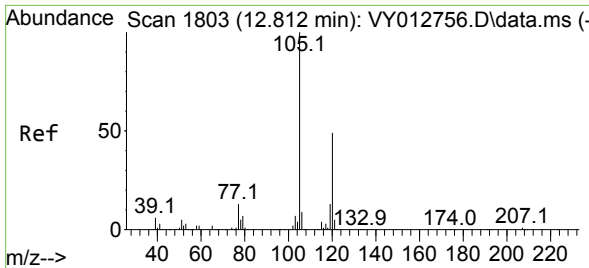
Tgt Ion: 91 Resp: 35926
 Ion Ratio Lower Upper
 91 100
 120 22.4 11.6 34.8



#79
 2-Chlorotoluene
 Concen: 7.232 ug/l
 RT: 12.733 min Scan# 1790
 Delta R.T. -0.025 min
 Lab File: VY012992.D
 Acq: 17 Mar 2023 17:22

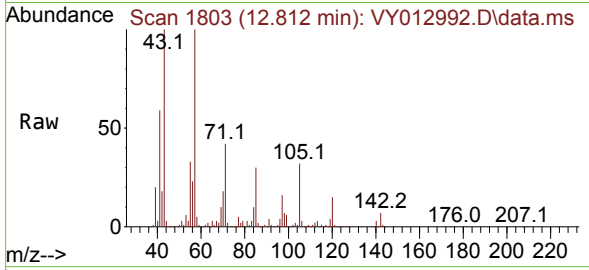
Tgt Ion: 91 Resp: 23657
 Ion Ratio Lower Upper
 91 100
 126 0.3 17.4 52.2#



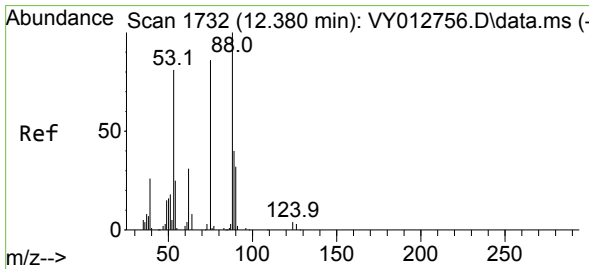
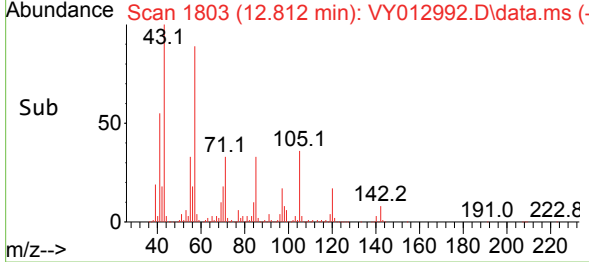
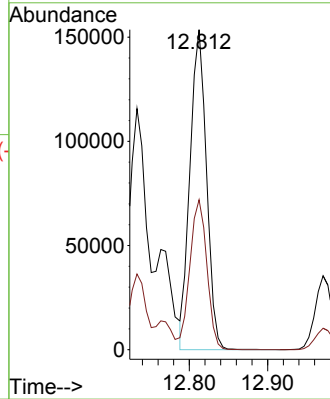


#80
 1,3,5-Trimethylbenzene
 Concen: 57.073 ug/l
 RT: 12.812 min Scan# 1749
 Delta R.T. -0.000 min
 Lab File: VY012992.D
 Acq: 17 Mar 2023 17:22

Instrument : MSVOA_Y
 ClientSampleId :

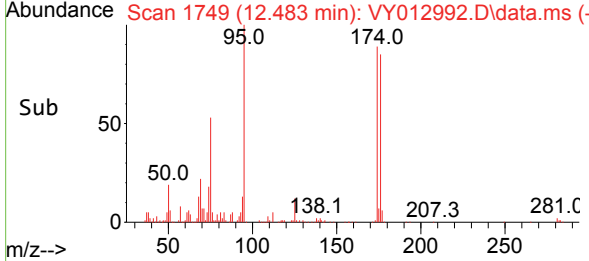
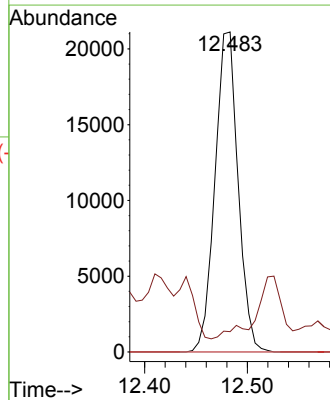
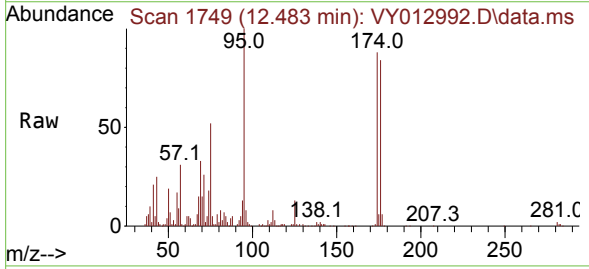


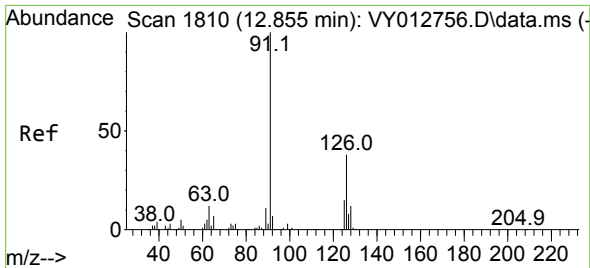
Tgt Ion:105 Resp: 224856
 Ion Ratio Lower Upper
 105 100
 120 48.8 24.8 74.4



#81
 trans-1,4-Dichloro-2-butene
 Concen: 84.709 ug/l
 RT: 12.483 min Scan# 1749
 Delta R.T. 0.104 min
 Lab File: VY012992.D
 Acq: 17 Mar 2023 17:22

Tgt Ion: 75 Resp: 32886
 Ion Ratio Lower Upper
 75 100
 53 0.0 73.4 110.0#
 89 0.0 36.6 55.0#

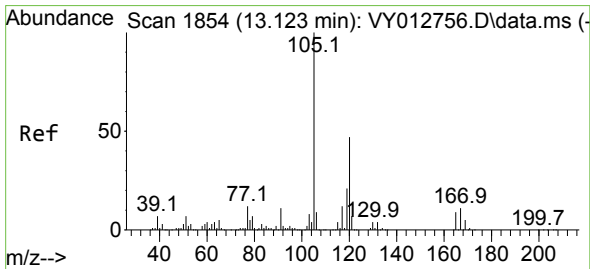
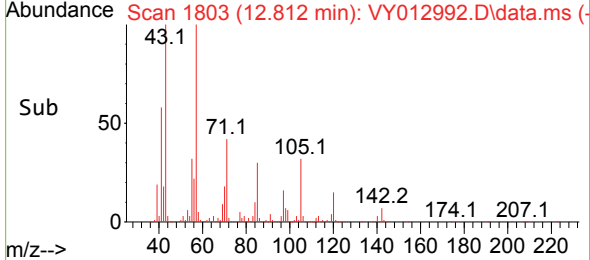
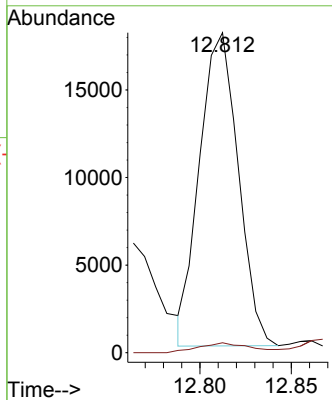
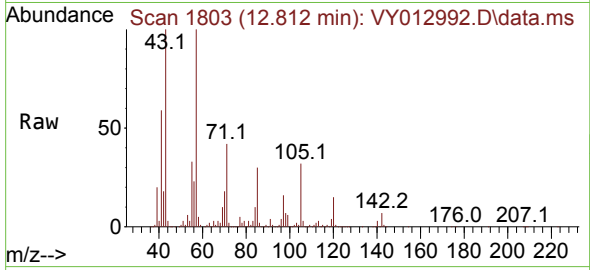




#82
 4-Chlorotoluene
 Concen: 7.773 ug/l
 RT: 12.812 min Scan# 1810
 Delta R.T. -0.043 min
 Lab File: VY012992.D
 Acq: 17 Mar 2023 17:22

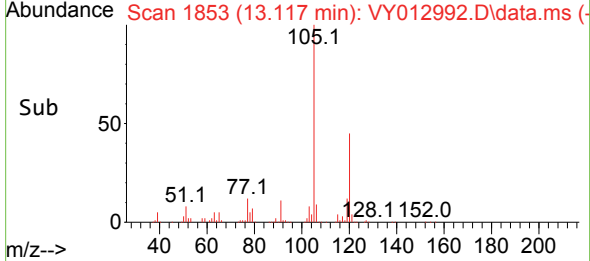
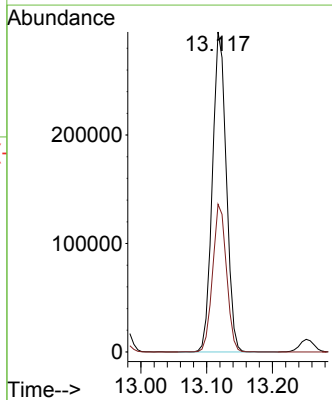
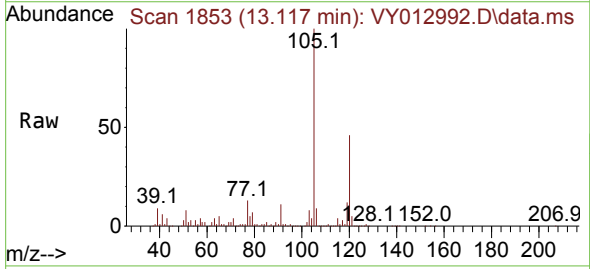
Instrument : MSVOA_Y
 ClientSampleId :

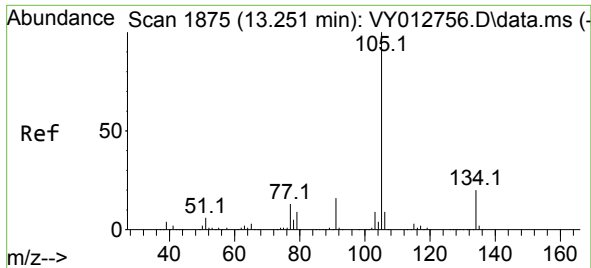
Tgt Ion: 91 Resp: 26321
 Ion Ratio Lower Upper
 91 100
 126 4.0 17.7 53.1#



#84
 1,2,4-Trimethylbenzene
 Concen: 112.716 ug/l
 RT: 13.117 min Scan# 1853
 Delta R.T. -0.006 min
 Lab File: VY012992.D
 Acq: 17 Mar 2023 17:22

Tgt Ion: 105 Resp: 434244
 Ion Ratio Lower Upper
 105 100
 120 46.0 23.0 69.0

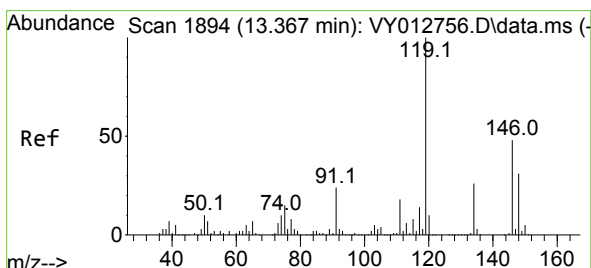
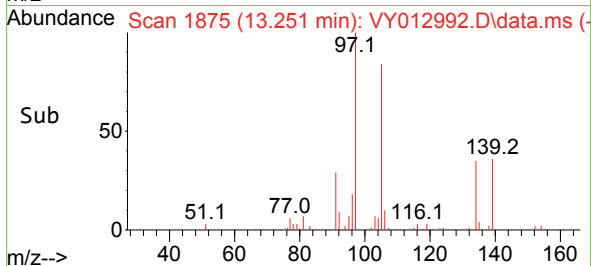
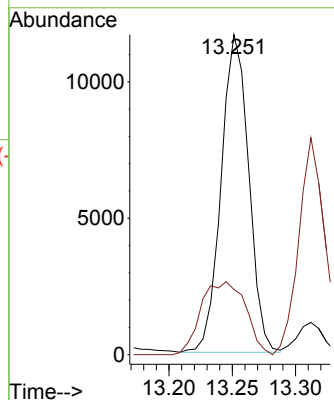
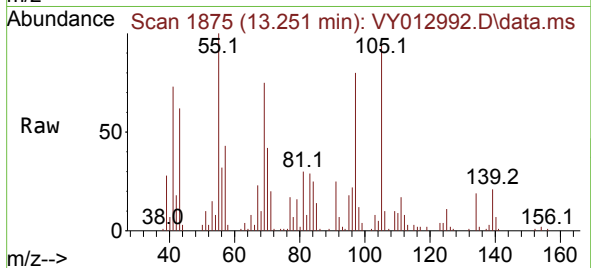




#85
 sec-Butylbenzene
 Concen: 3.401 ug/l
 RT: 13.251 min Scan# 1875
 Delta R.T. -0.000 min
 Lab File: VY012992.D
 Acq: 17 Mar 2023 17:22

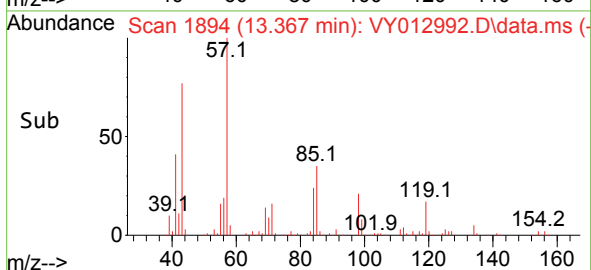
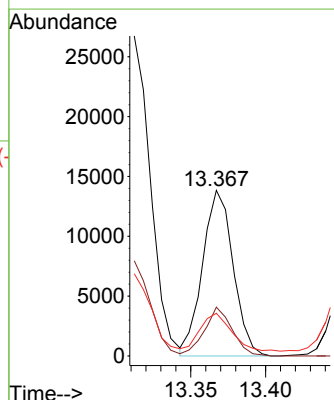
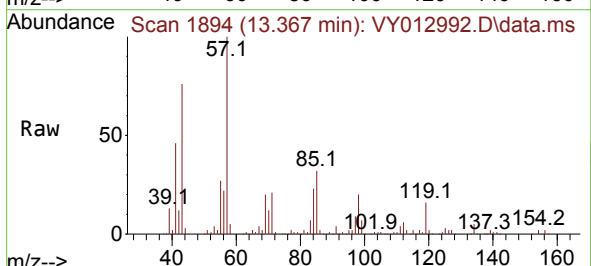
Instrument : MSVOA_Y
 ClientSampleId :

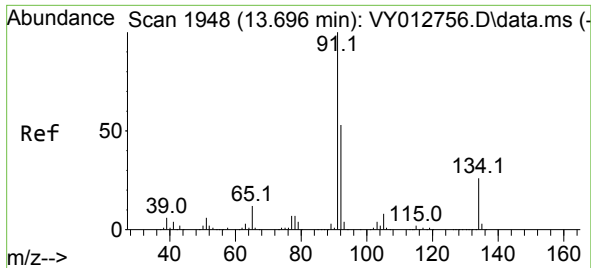
Tgt Ion:105 Resp: 17643
 Ion Ratio Lower Upper
 105 100
 134 37.1 10.4 31.1#



#86
 p-Isopropyltoluene
 Concen: 4.647 ug/l
 RT: 13.367 min Scan# 1894
 Delta R.T. -0.000 min
 Lab File: VY012992.D
 Acq: 17 Mar 2023 17:22

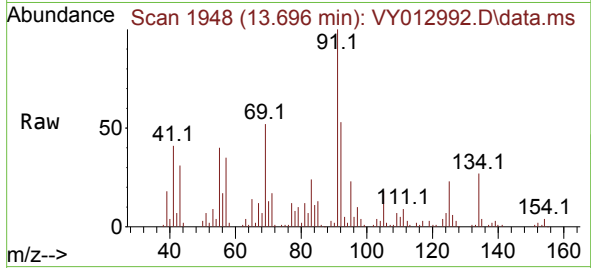
Tgt Ion:119 Resp: 19701
 Ion Ratio Lower Upper
 119 100
 134 26.8 13.2 39.6
 91 23.2 11.8 35.3



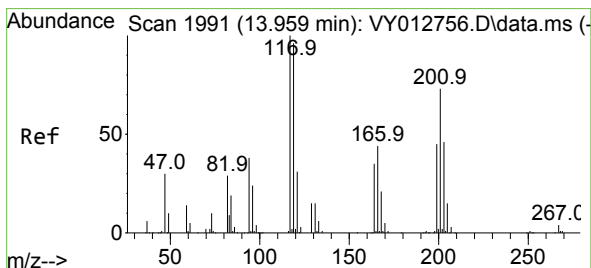
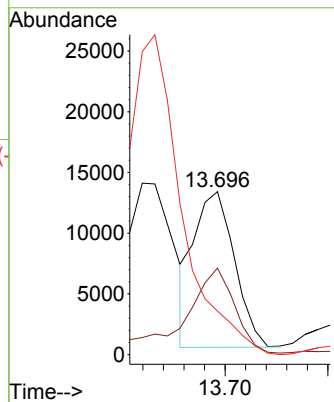
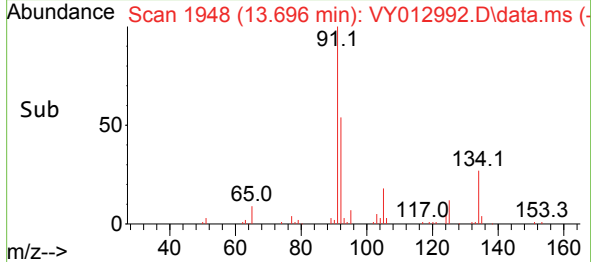


#89
 n-Butylbenzene
 Concen: 4.318 ug/l
 RT: 13.696 min Scan# 1948
 Delta R.T. -0.000 min
 Lab File: VY012992.D
 Acq: 17 Mar 2023 17:22

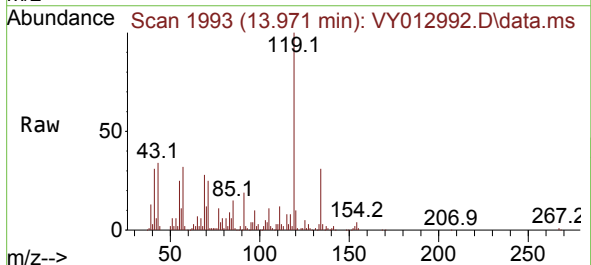
Instrument : MSVOA_Y
 ClientSampleId :



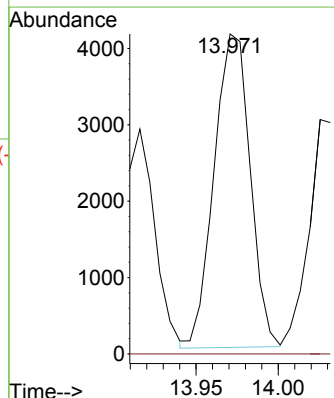
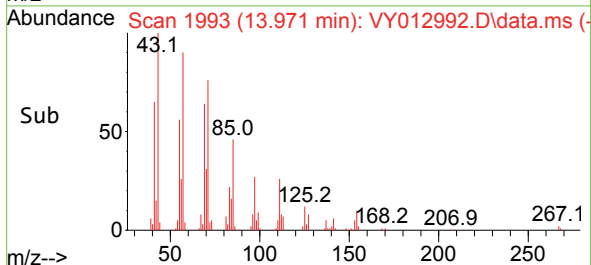
Tgt Ion: 91 Resp: 17526
 Ion Ratio Lower Upper
 91 100
 92 69.1 26.4 79.0
 134 0.0 13.0 38.9#

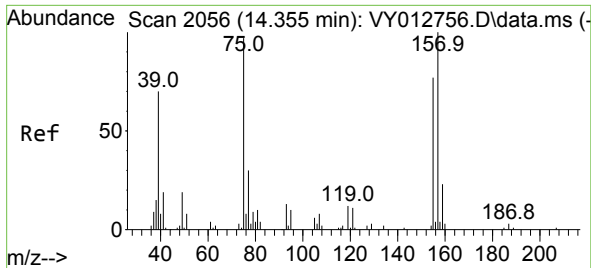


#90
 Hexachloroethane
 Concen: 7.093 ug/l
 RT: 13.971 min Scan# 1993
 Delta R.T. 0.012 min
 Lab File: VY012992.D
 Acq: 17 Mar 2023 17:22



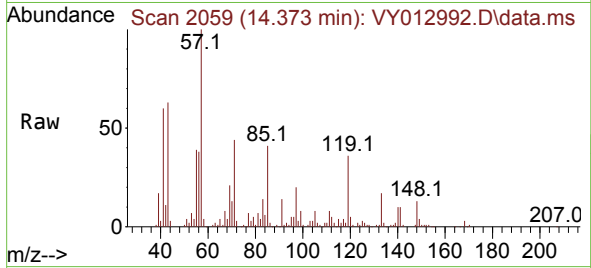
Tgt Ion: 117 Resp: 6264
 Ion Ratio Lower Upper
 117 100
 201 0.0 39.4 118.1#



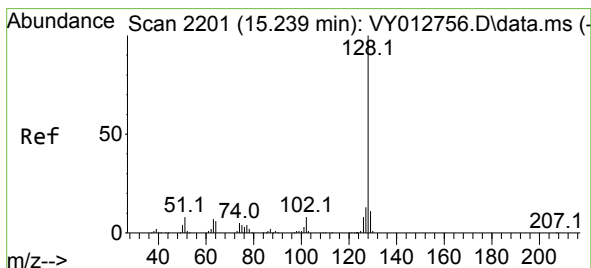
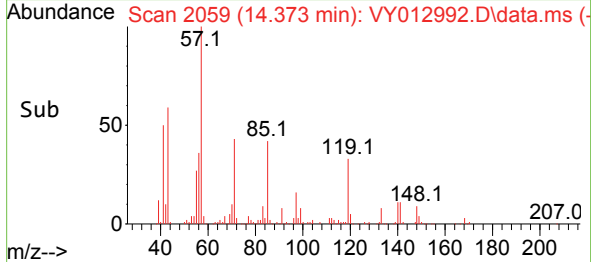
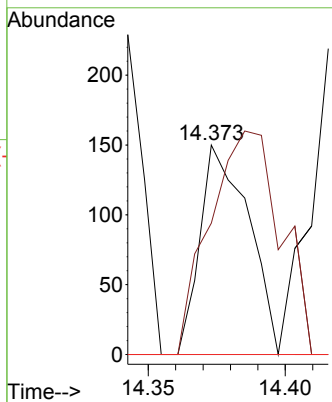


#92
 1,2-Dibromo-3-Chloropropane
 Concen: 1.067 ug/l
 RT: 14.373 min Scan# 2059
 Delta R.T. 0.018 min
 Lab File: VY012992.D
 Acq: 17 Mar 2023 17:22

Instrument :
 MSVOA_Y
 ClientSampleId :



Tgt Ion: 75 Resp: 185
 Ion Ratio Lower Upper
 75 100
 155 156.2 43.8 131.4#
 157 0.0 54.1 162.3#



#95
 Naphthalene
 Concen: 2.393 ug/l
 RT: 15.233 min Scan# 2200
 Delta R.T. -0.006 min
 Lab File: VY012992.D
 Acq: 17 Mar 2023 17:22

Tgt Ion: 128 Resp: 5969
 Ion Ratio Lower Upper
 128 100
 127 0.0 10.3 15.5#
 129 11.8 8.6 13.0

