

Data Path : Z:\VOASRV\HPCHEM1\MSVOA Y\DATA\VY031820\  
 Data File : VY002006.D  
 Acq On : 18 Mar 2020 12:09  
 Operator : SY/MD  
 Sample : L1958-04RE  
 Misc : 6.11G/5ML/MSVOA Y/SOIL  
 ALS Vial : 6 Sample Multiplier: 1

Instrument :  
 MSVOA\_Y  
 ClientSampled :  
 GHD1-SB-03-1.5-2.5

Quant Time: Mar 19 01:26:07 2020  
 Quant Method : Z:\VOASRV\HPCHEM1\MSVOA\_Y\METHODS\82Y030420S.M  
 Quant Title : SW846 8260  
 QLast Update : Thu Mar 05 04:05:33 2020  
 Response via : Initial Calibration

Internal Standards	R.T.	QIon	Response	Conc	Units	Dev(Min)
1) Pentafluorobenzene	7.82	168	137793	50.00	ug/l	0.00
34) 1,4-Difluorobenzene	8.71	114	265841	50.00	ug/l	0.00
63) Chlorobenzene-d5	11.50	117	221243	50.00	ug/l	0.00
72) 1,4-Dichlorobenzene-d4	13.43	152	69478	50.00	ug/l	0.00

System Monitoring Compounds	R.T.	QIon	Response	Conc	Units	Dev(Min)
33) 1,2-Dichloroethane-d4	8.16	65	83665	56.88	ug/l	0.00
Spiked Amount				50.000		
Recovery						113.76%
35) Dibromofluoromethane	7.74	113	78089	53.79	ug/l	0.00
Spiked Amount				50.000		
Recovery						107.58%
50) Toluene-d8	10.19	98	316877	51.77	ug/l	0.00
Spiked Amount				50.000		
Recovery						103.54%
62) 4-Bromofluorobenzene	12.49	95	89729	42.16	ug/l	0.00
Spiked Amount				50.000		
Recovery						84.32%

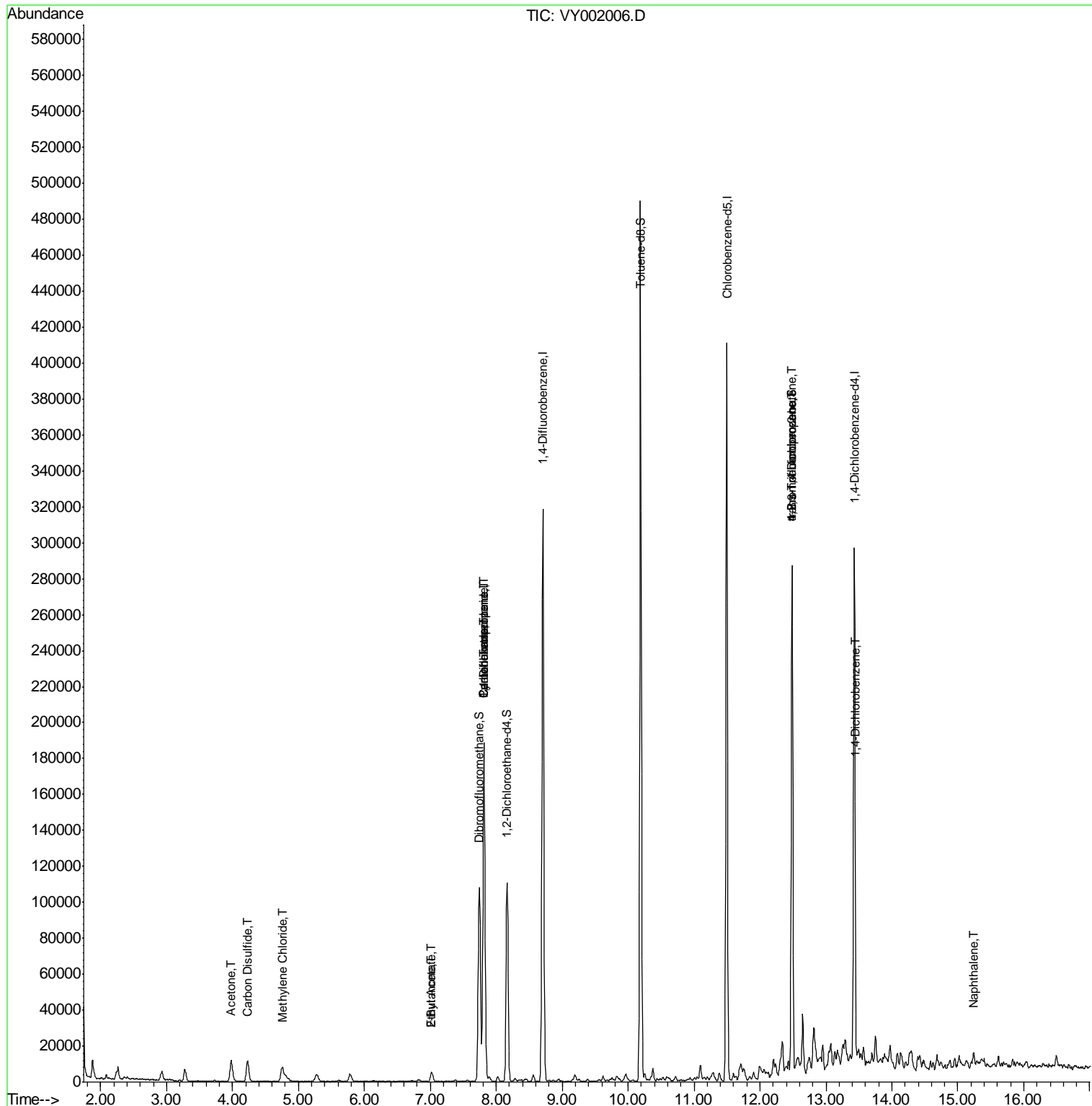
Target Compounds	R.T.	QIon	Response	Conc	Units	Qvalue
5) Bromomethane	2.69	94	19	Below Cal	#	4
11) Tert butyl alcohol	5.00	59	66	Below Cal	#	74
16) Acetone	3.98	43	19432	45.354	ug/l	91
17) Carbon Disulfide	4.23	76	22465	4.362	ug/l #	94
20) Methylene Chloride	4.75	84	5711	3.110	ug/l	92
25) 2-Butanone	7.02	43	6922	10.624	ug/l	95
31) Cyclohexane	7.82	56	3764	1.164	ug/l #	1
36) 1,1-Dichloropropene	7.82	75	12297	4.807	ug/l #	50
37) Ethyl Acetate	7.02	43	6922	4.656	ug/l #	85
38) Carbon Tetrachloride	7.82	117	14197	6.496	ug/l #	16
76) 1,2,3-Trichloropropane	12.49	75	45811	55.569	ug/l #	100
81) trans-1,4-Dichloro-2-buten	12.49	75	45811	112.246	ug/l #	17
88) 1,4-Dichlorobenzene	13.45	146	3695	1.654	ug/l #	68
95) Naphthalene	15.24	128	6680	2.171	ug/l	96

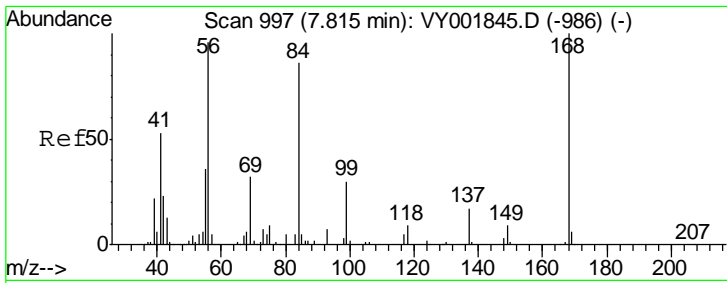
(#) = qualifier out of range (m) = manual integration (+) = signals summed

Data Path : Z:\VOASRV\HPCHEM1\MSVOA Y\DATA\VY031820\  
 Data File : VY002006.D  
 Acq On : 18 Mar 2020 12:09  
 Operator : SY/MD  
 Sample : L1958-04RE  
 Misc : 6.11G/5ML/MSVOA Y/SOIL  
 ALS Vial : 6 Sample Multiplier: 1

Instrument :  
 MSVOA\_Y  
 Client Sampled :  
 GHD1-SB-03-1.5-2.5

Quant Time: Mar 19 01:26:07 2020  
 Quant Method : Z:\VOASRV\HPCHEM1\MSVOA\_Y\METHODS\82Y030420S.M  
 Quant Title : SW846 8260  
 QLast Update : Thu Mar 05 04:05:33 2020  
 Response via : Initial Calibration

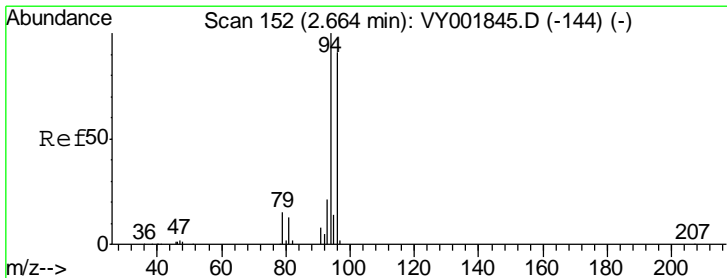
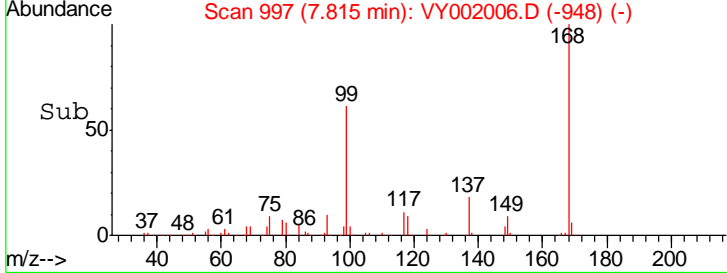
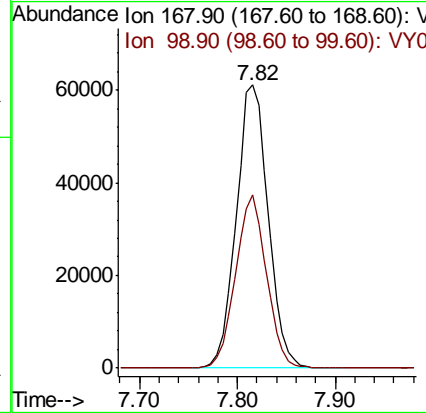
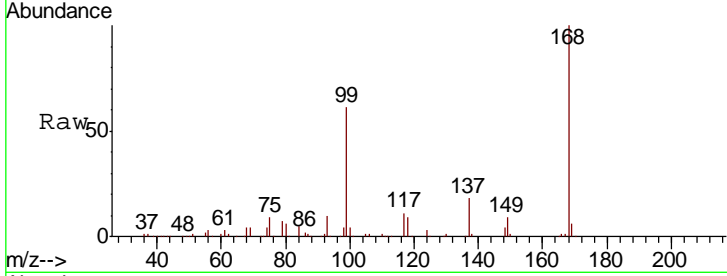




#1  
 Pentafluorobenzene  
 Concen: 50.000 ug/l  
 RT: 7.82 min Scan# 997  
 Delta R.T. 0.00 min  
 Lab File: VY002006.D  
 Acq: 18 Mar 2020 12:09

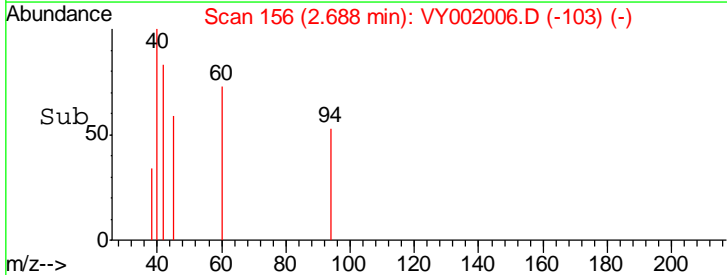
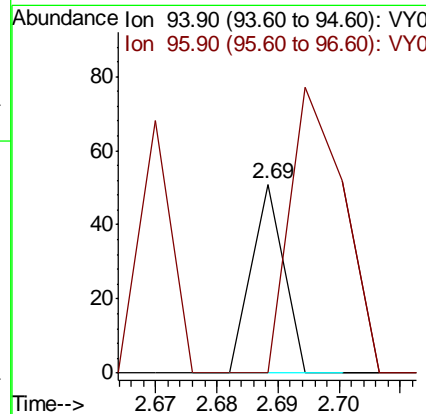
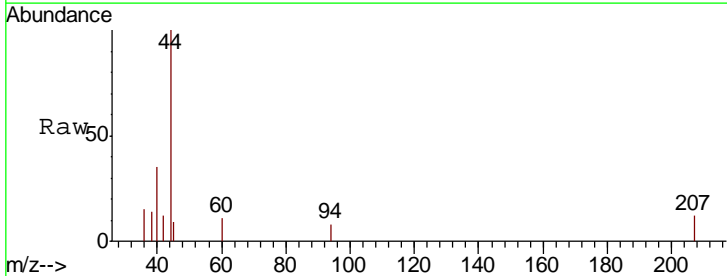
Instrument :  
 MSVOA\_Y  
 ClientSampleId :  
 GHD1-SB-03-1.5-2.5

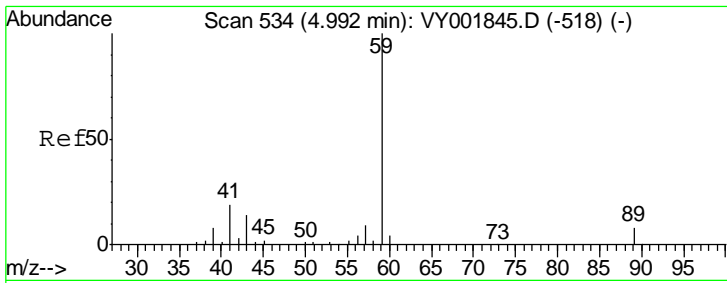
Tgt Ion: 168 Resp: 137793  
 Ion Ratio Lower Upper  
 168 100  
 99 61.3 46.7 70.1



#5  
 Bromomethane  
 Concen: Below Cal  
 RT: 2.69 min Scan# 156  
 Delta R.T. 0.03 min  
 Lab File: VY002006.D  
 Acq: 18 Mar 2020 12:09

Tgt Ion: 94 Resp: 19  
 Ion Ratio Lower Upper  
 94 100  
 96 0.0 73.2 109.8#

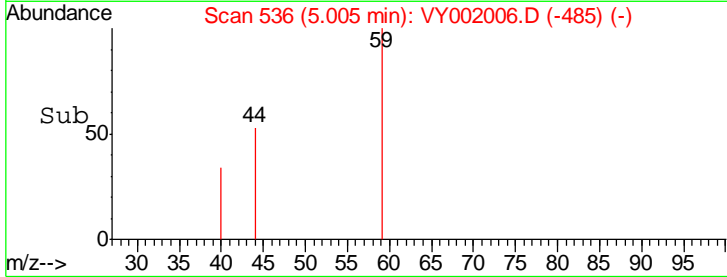
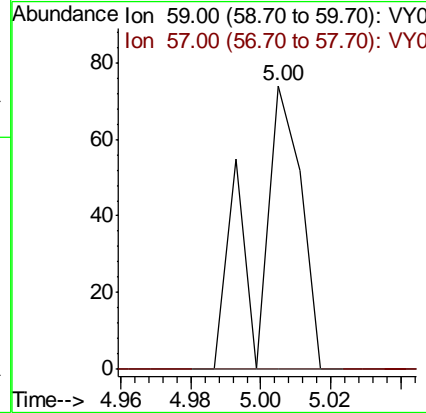
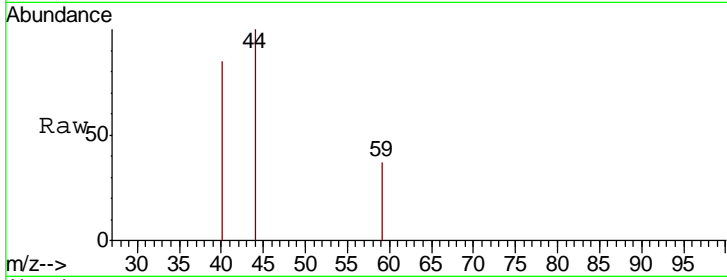




#11  
 Tert butyl alcohol  
 Concen: Below Cal  
 RT: 5.00 min Scan# 536  
 Delta R.T. 0.01 min  
 Lab File: VY002006.D  
 Acq: 18 Mar 2020 12:09

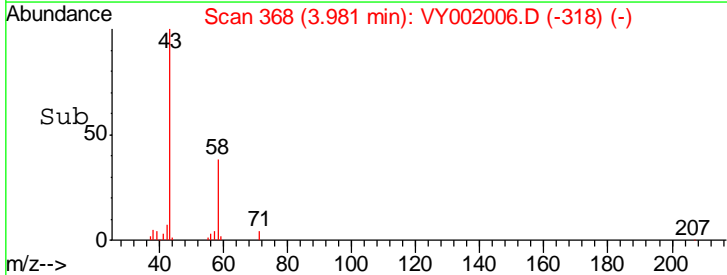
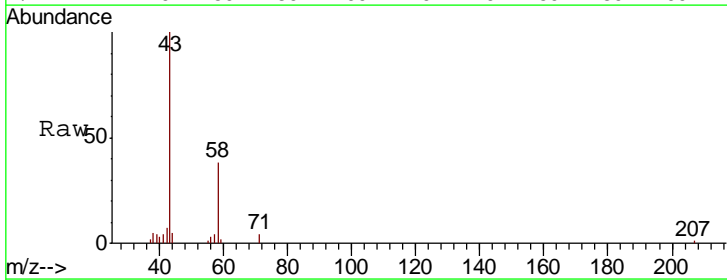
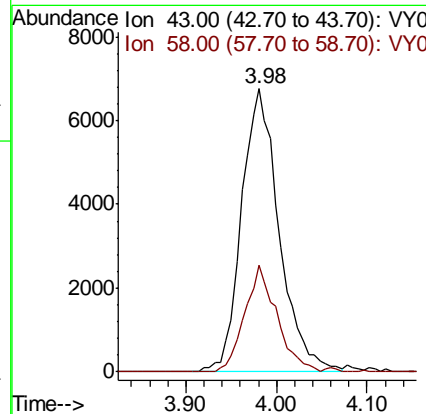
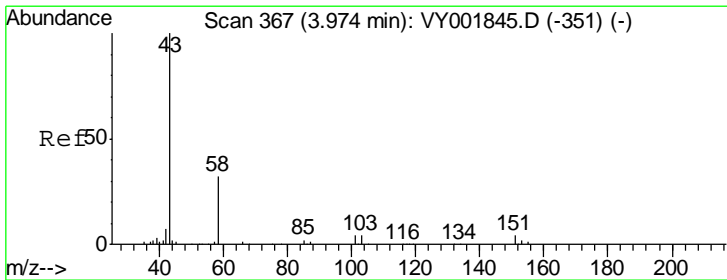
Instrument :  
 MSVOA\_Y  
 ClientSampled :  
 GHD1-SB-03-1.5-2.5

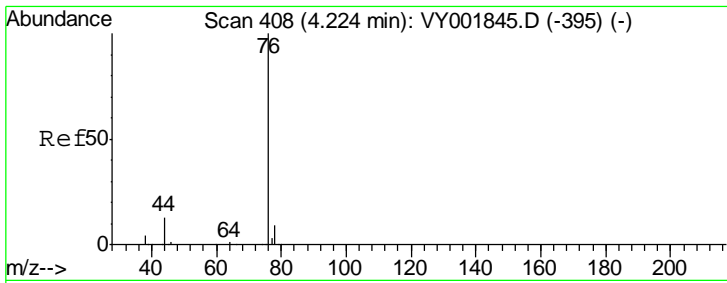
Tgt Ion: 59 Resp: 66  
 Ion Ratio Lower Upper  
 59 100  
 57 0.0 7.4 11.2#



#16  
 Acetone  
 Concen: 45.354 ug/l  
 RT: 3.98 min Scan# 368  
 Delta R.T. 0.01 min  
 Lab File: VY002006.D  
 Acq: 18 Mar 2020 12:09

Tgt Ion: 43 Resp: 19432  
 Ion Ratio Lower Upper  
 43 100  
 58 37.7 25.9 38.9

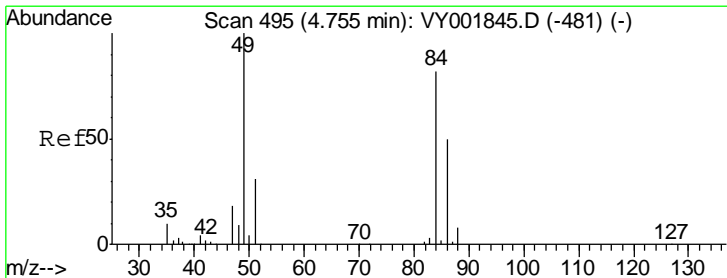
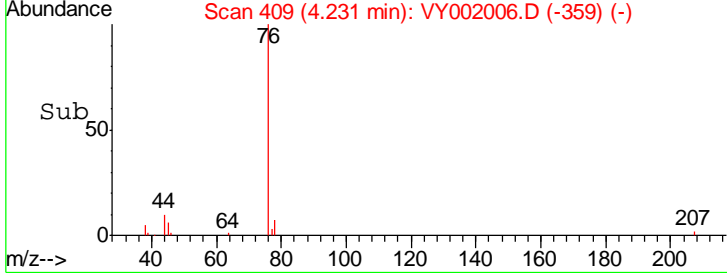
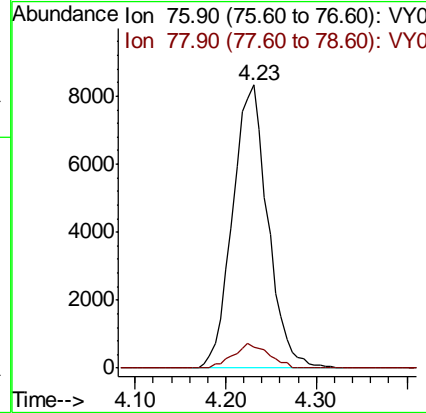
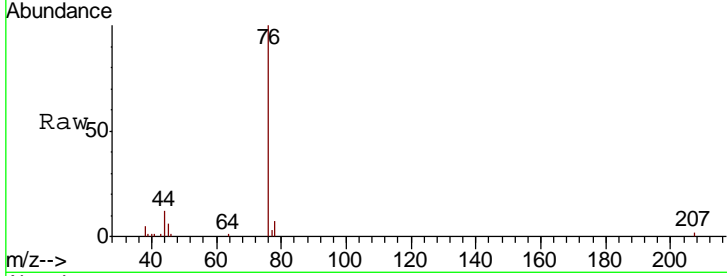




#17  
 Carbon Disulfide  
 Concen: 4.362 ug/l  
 RT: 4.23 min Scan# 409  
 Delta R.T. 0.01 min  
 Lab File: VY002006.D  
 Acq: 18 Mar 2020 12:09

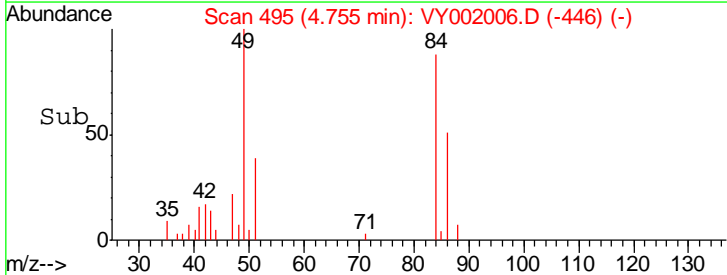
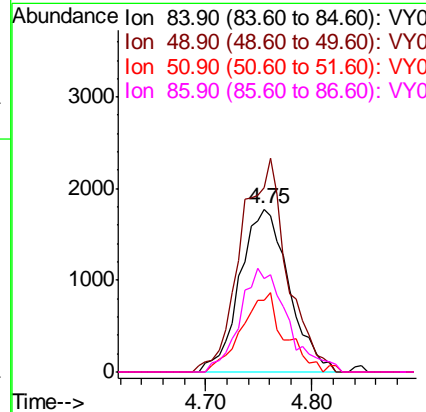
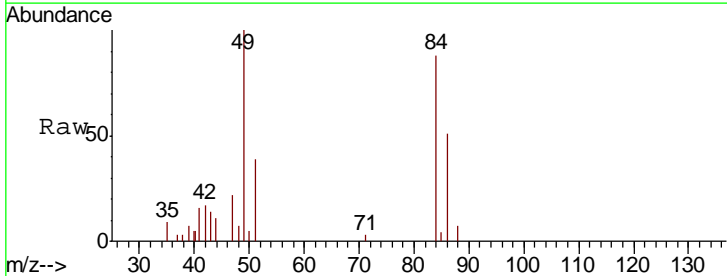
**Instrument :**  
 MSVOA\_Y  
**ClientSampled :**  
 GHD1-SB-03-1.5-2.5

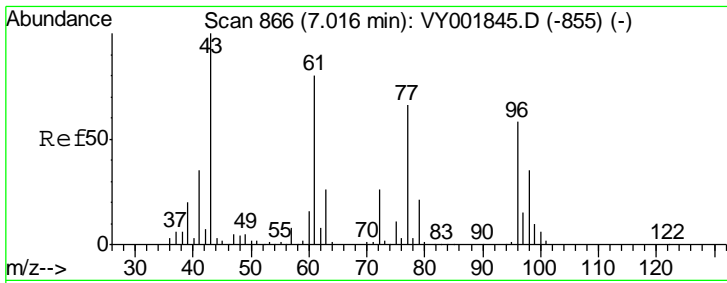
Tgt Ion	Resp	Lower	Upper
76	100		
78	7.2	7.4	11.2#



#20  
 Methylene Chloride  
 Concen: 3.110 ug/l  
 RT: 4.75 min Scan# 495  
 Delta R.T. 0.00 min  
 Lab File: VY002006.D  
 Acq: 18 Mar 2020 12:09

Tgt Ion	Resp	Lower	Upper
84	100		
49	113.2	98.2	147.2
51	44.1	30.2	45.2
86	57.2	48.9	73.3

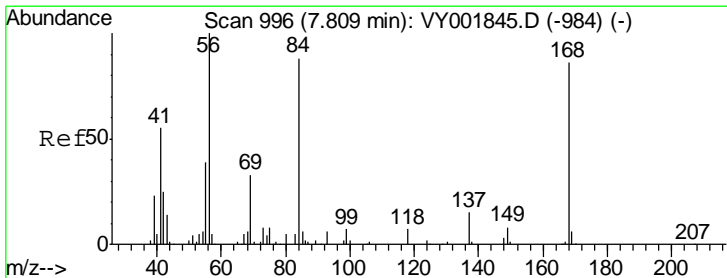
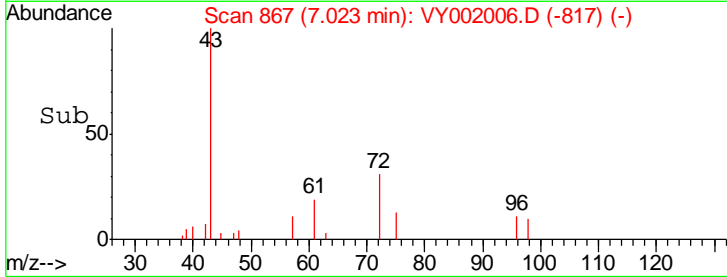
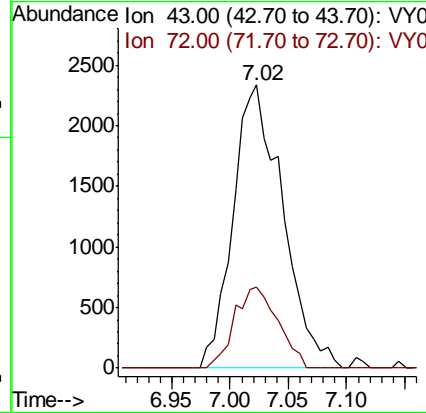
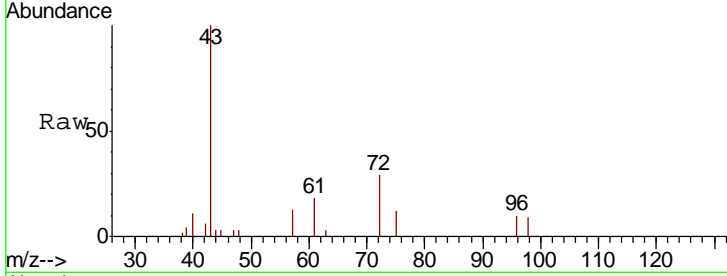




#25  
 2-Butanone  
 Concen: 10.624 ug/l  
 RT: 7.02 min Scan# 867  
 Delta R.T. 0.01 min  
 Lab File: VY002006.D  
 Acq: 18 Mar 2020 12:09

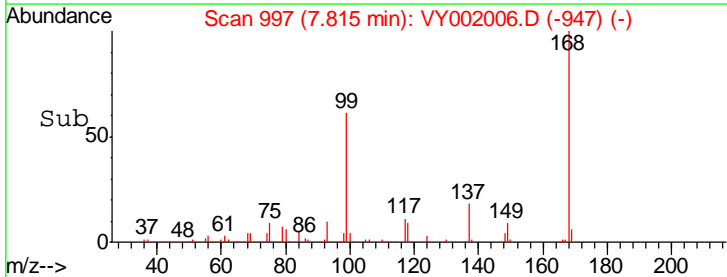
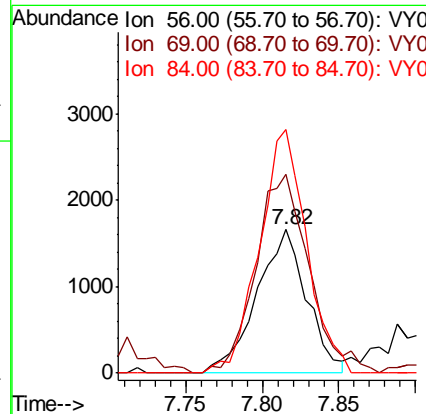
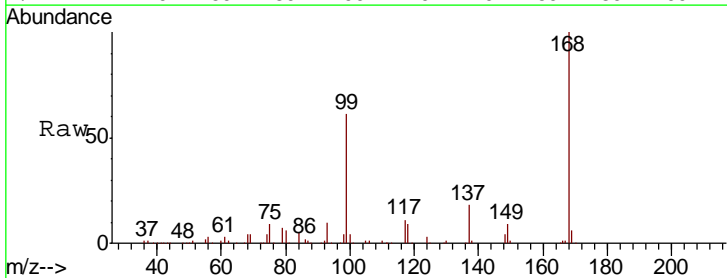
Instrument :  
 MSVOA\_Y  
 ClientSampled :  
 GHD1-SB-03-1.5-2.5

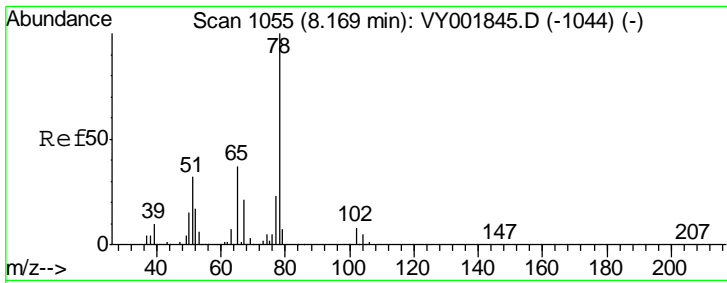
Tgt Ion: 43 Resp: 6922  
 Ion Ratio Lower Upper  
 43 100  
 72 28.7 20.9 31.3



#31  
 Cyclohexane  
 Concen: 1.164 ug/l  
 RT: 7.82 min Scan# 997  
 Delta R.T. 0.01 min  
 Lab File: VY002006.D  
 Acq: 18 Mar 2020 12:09

Tgt Ion: 56 Resp: 3764  
 Ion Ratio Lower Upper  
 56 100  
 69 138.2 26.7 40.1#  
 84 169.8 70.4 105.6#

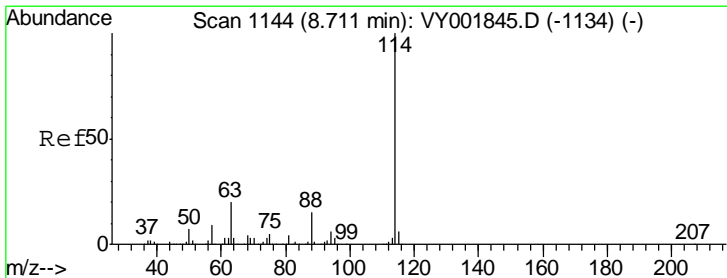
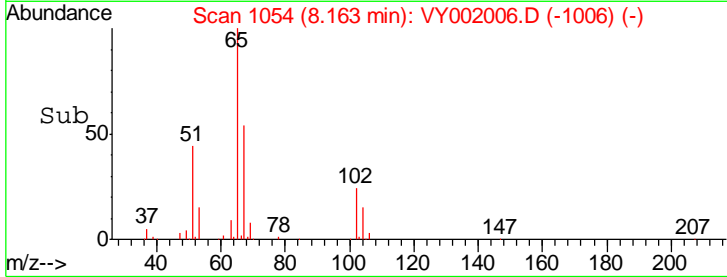
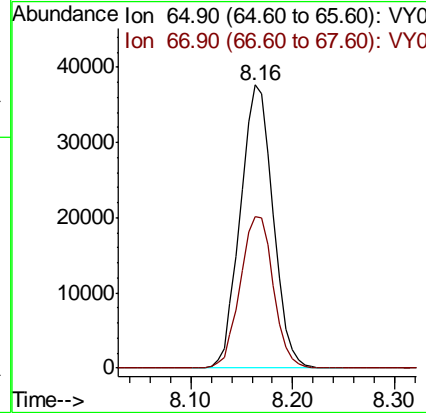
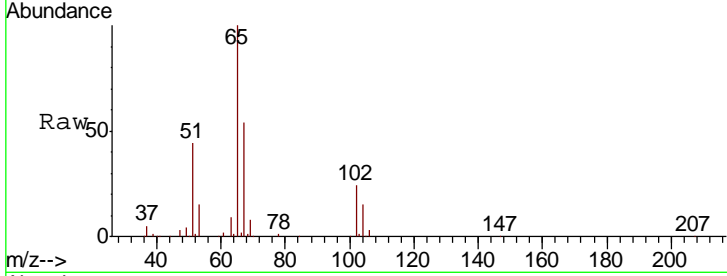




#33  
 1,2-Dichloroethane-d4  
 Concen: 56.875 ug/l  
 RT: 8.16 min Scan# 1054  
 Delta R.T. -0.01 min  
 Lab File: VY002006.D  
 Acq: 18 Mar 2020 12:09

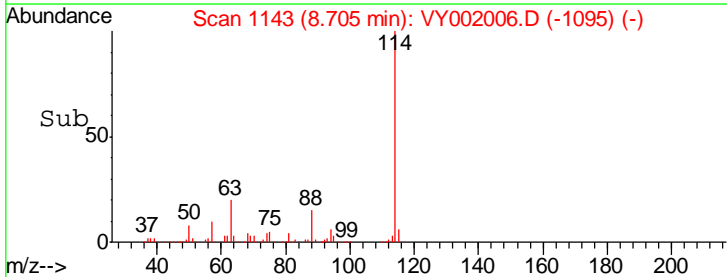
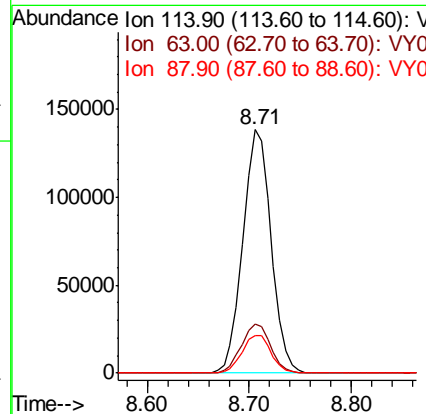
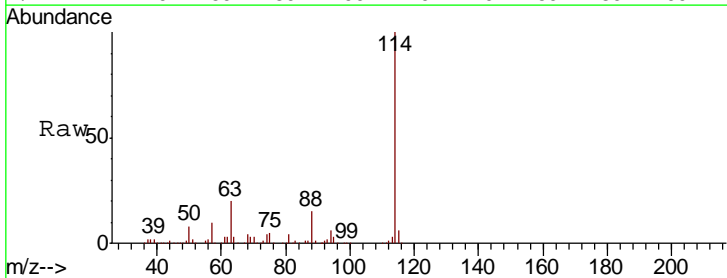
**Instrument :**  
 MSVOA\_Y  
**ClientSampled :**  
 GHD1-SB-03-1.5-2.5

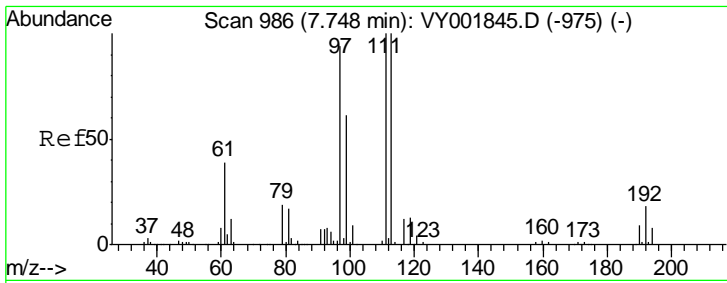
Tgt Ion	Resp	Lower	Upper
65	100		
67	54.3	0.0	110.8



#34  
 1,4-Difluorobenzene  
 Concen: 50.000 ug/l  
 RT: 8.71 min Scan# 1143  
 Delta R.T. -0.01 min  
 Lab File: VY002006.D  
 Acq: 18 Mar 2020 12:09

Tgt Ion	Resp	Lower	Upper
114	100		
63	20.2	0.0	39.4
88	15.4	0.0	30.4

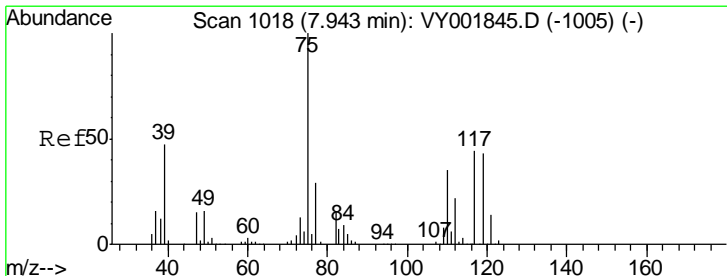
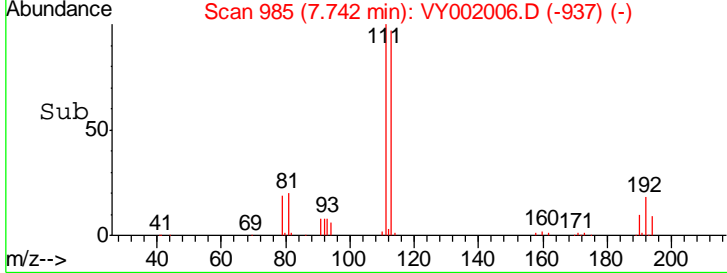
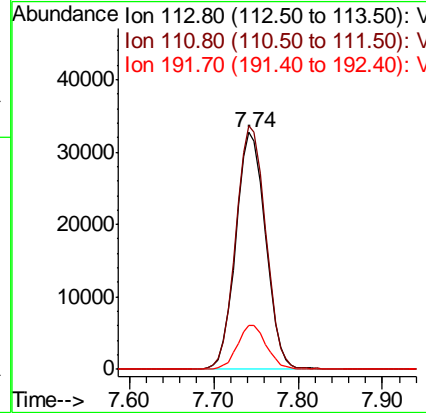
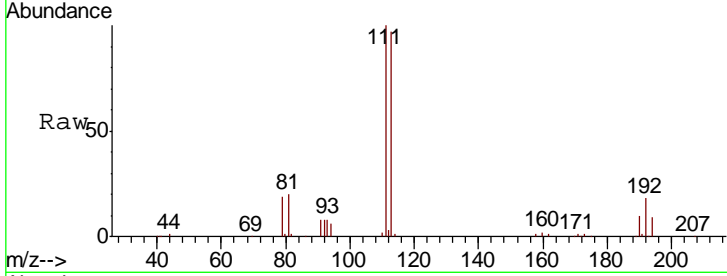




#35  
 Dibromofluoromethane  
 Concen: 53.795 ug/l  
 RT: 7.74 min Scan# 985  
 Delta R.T. -0.01 min  
 Lab File: VY002006.D  
 Acq: 18 Mar 2020 12:09

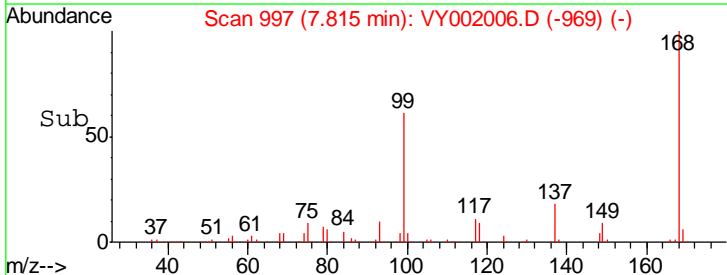
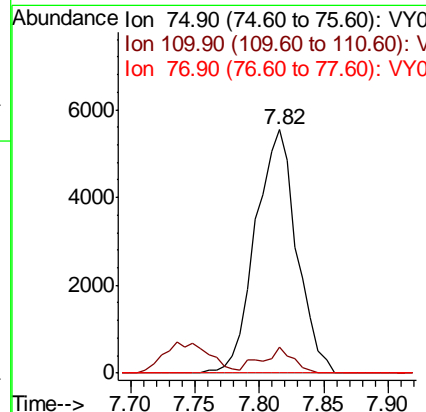
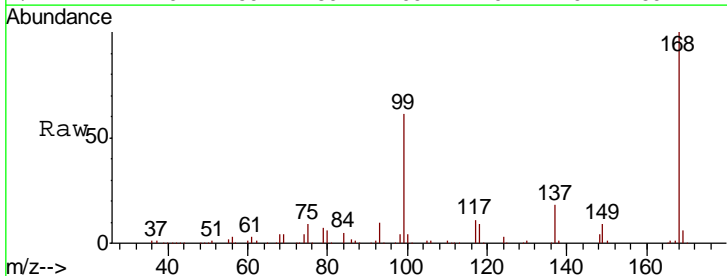
Instrument : MSVOA\_Y  
 ClientSampled : GHD1-SB-03-1.5-2.5

Tgt Ion	Resp	Lower	Upper
113	78089		
111	103.2	81.8	122.8
192	18.0	14.2	21.2

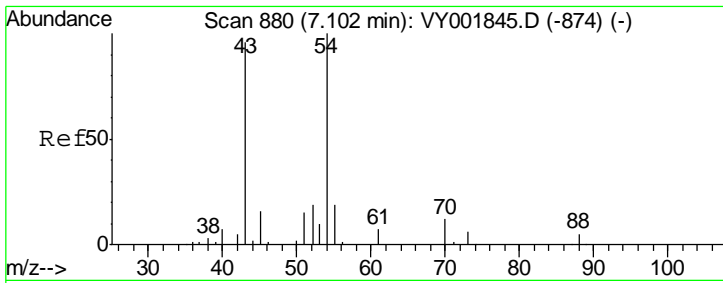


#36  
 1,1-Dichloropropene  
 Concen: 4.807 ug/l  
 RT: 7.82 min Scan# 997  
 Delta R.T. -0.13 min  
 Lab File: VY002006.D  
 Acq: 18 Mar 2020 12:09

Tgt Ion	Resp	Lower	Upper
75	12297		
110	8.2	17.4	52.2#
77	0.0	24.2	36.2#



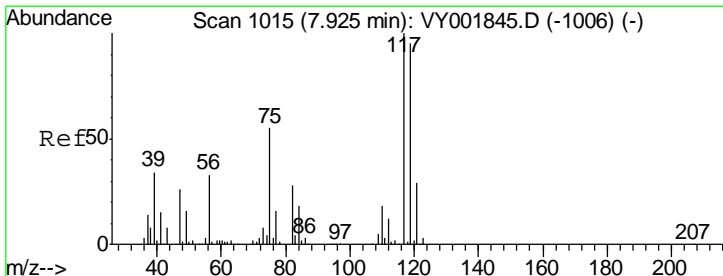
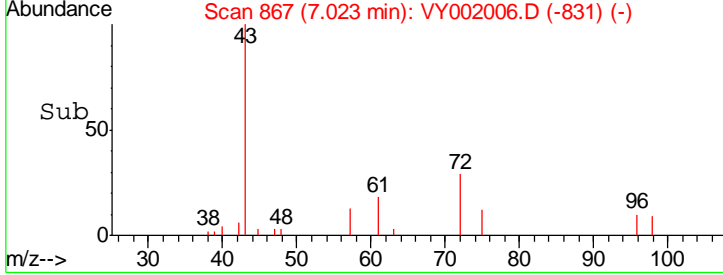
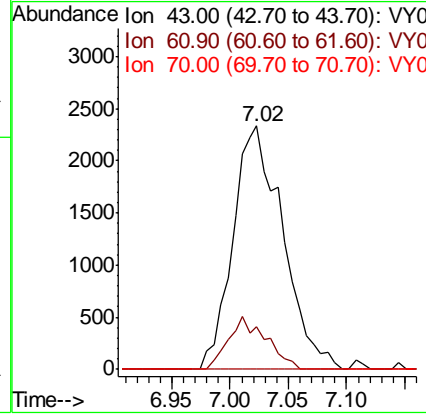
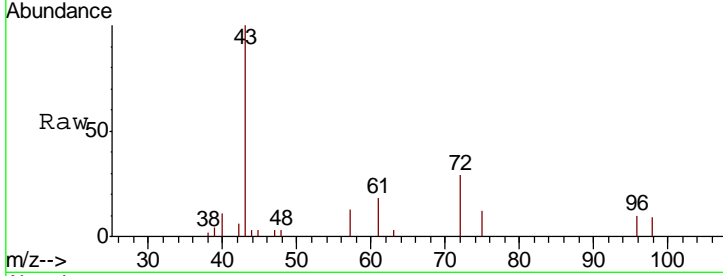




#37  
 Ethyl Acetate  
 Concen: 4.656 ug/l  
 RT: 7.02 min Scan# 867  
 Delta R.T. -0.08 min  
 Lab File: VY002006.D  
 Acq: 18 Mar 2020 12:09

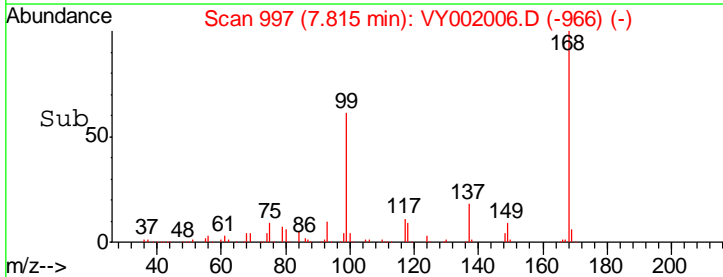
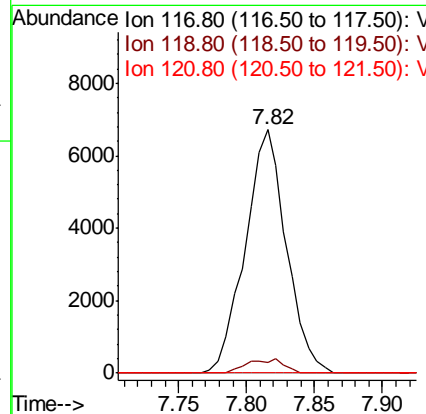
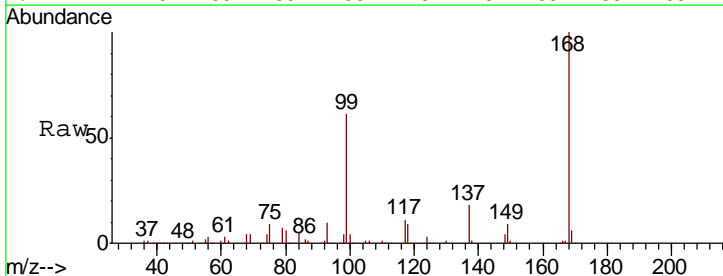
**Instrument :**  
 MSVOA\_Y  
**ClientSampled :**  
 GHD1-SB-03-1.5-2.5

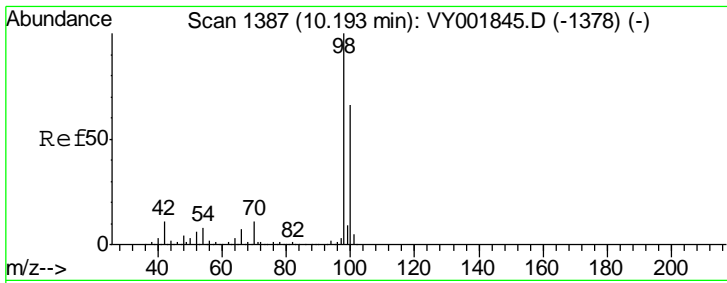
Tgt Ion	Resp	Lower	Upper
43	6922		
61	16.4	11.1	16.7
70	0.0	8.2	12.4#



#38  
 Carbon Tetrachloride  
 Concen: 6.496 ug/l  
 RT: 7.82 min Scan# 997  
 Delta R.T. -0.11 min  
 Lab File: VY002006.D  
 Acq: 18 Mar 2020 12:09

Tgt Ion	Resp	Lower	Upper
117	14197		
119	4.4	76.3	114.5#
121	0.0	23.5	35.3#

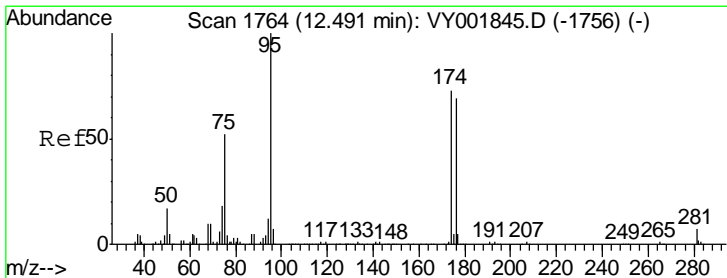
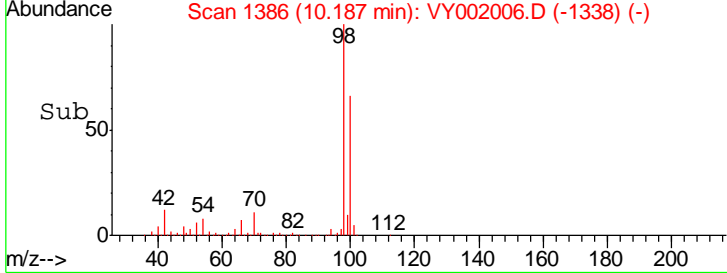
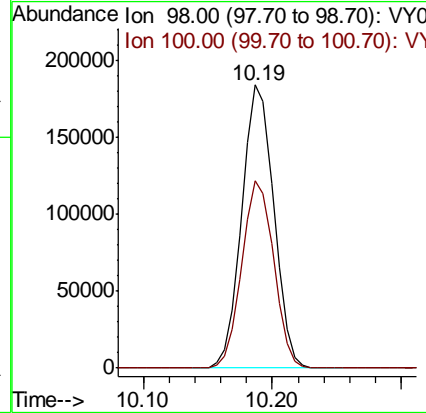
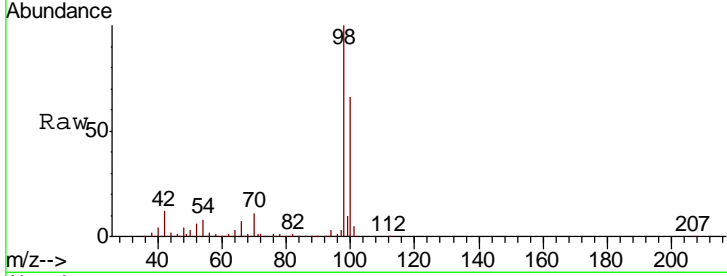




#50  
 Toluene-d8  
 Concen: 51.767 ug/l  
 RT: 10.19 min Scan# 1386  
 Delta R.T. -0.01 min  
 Lab File: VY002006.D  
 Acq: 18 Mar 2020 12:09

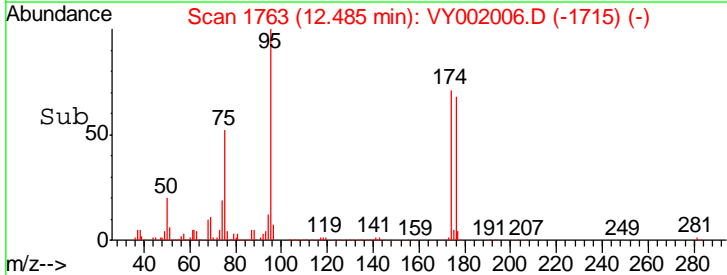
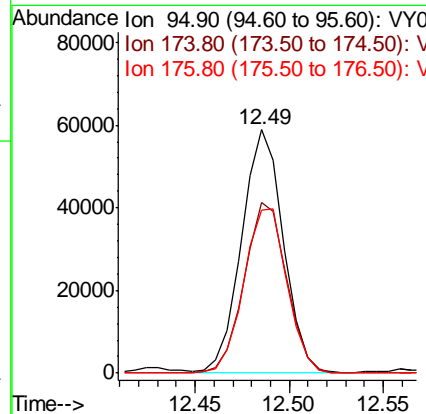
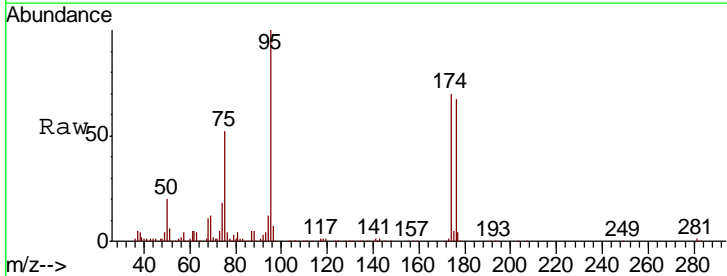
**Instrument :**  
 MSVOA\_Y  
**ClientSampled :**  
 GHD1-SB-03-1.5-2.5

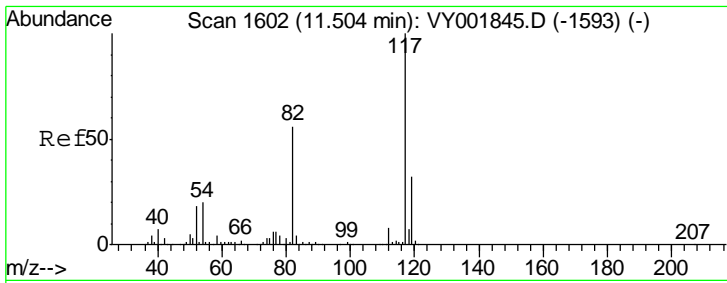
Tgt Ion	Resp	Lower	Upper
98	316877		
100	66.1	53.0	79.4



#62  
 4-Bromofluorobenzene  
 Concen: 42.158 ug/l  
 RT: 12.49 min Scan# 1763  
 Delta R.T. -0.01 min  
 Lab File: VY002006.D  
 Acq: 18 Mar 2020 12:09

Tgt Ion	Resp	Lower	Upper
95	89729		
174	71.9	0.0	145.0
176	70.3	0.0	137.4

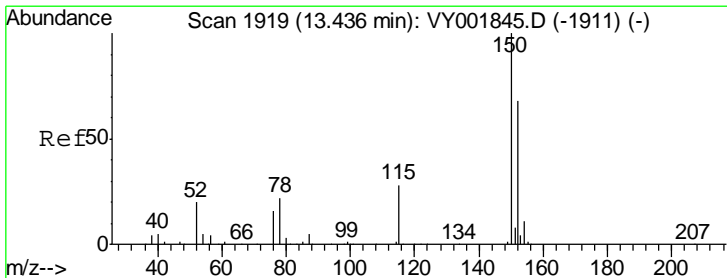
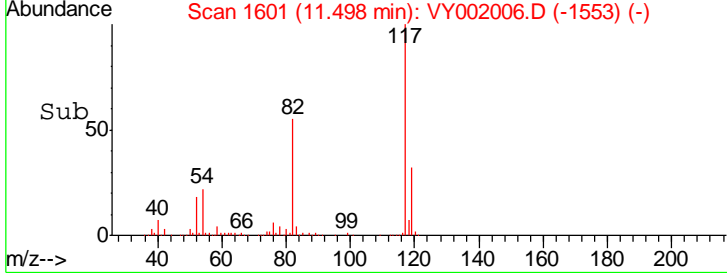
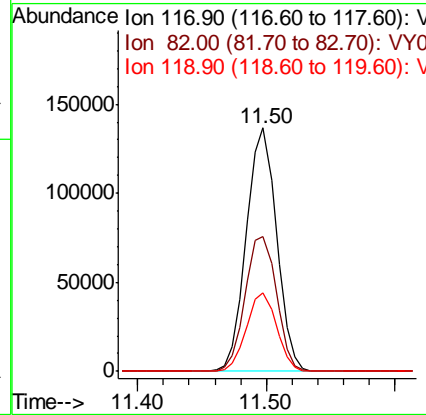
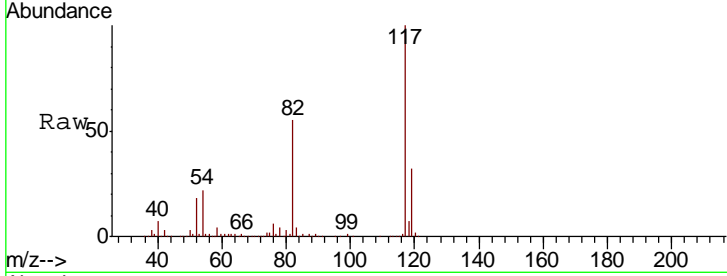




#63  
 Chlorobenzene-d5  
 Concen: 50.000 ug/l  
 RT: 11.50 min Scan# 1601  
 Delta R.T. -0.01 min  
 Lab File: VY002006.D  
 Acq: 18 Mar 2020 12:09

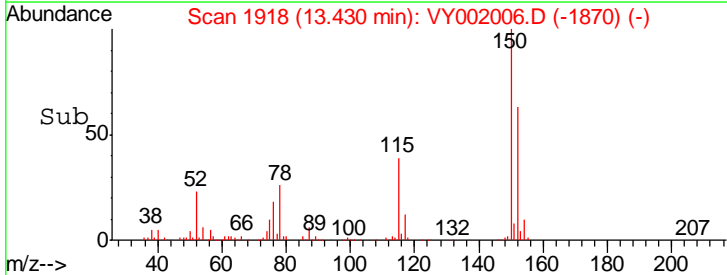
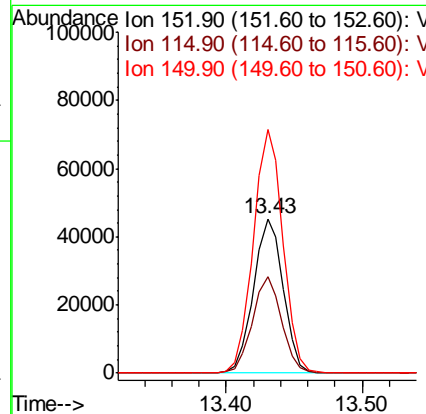
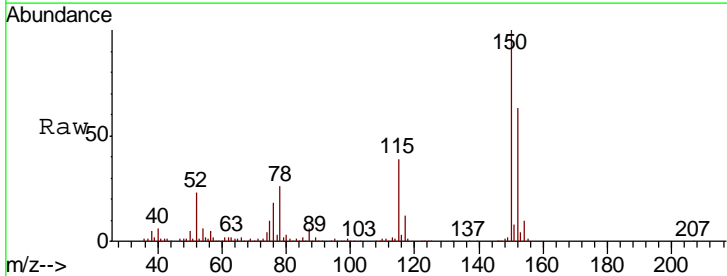
**Instrument :**  
 MSVOA\_Y  
**ClientSampled :**  
 GHD1-SB-03-1.5-2.5

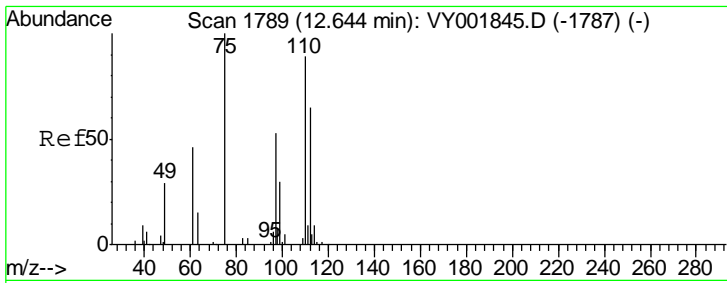
Tgt Ion	Resp	Lower	Upper
117	221243		
82	55.3	44.5	66.7
119	32.0	25.7	38.5



#72  
 1,4-Dichlorobenzene-d4  
 Concen: 50.000 ug/l  
 RT: 13.43 min Scan# 1918  
 Delta R.T. -0.01 min  
 Lab File: VY002006.D  
 Acq: 18 Mar 2020 12:09

Tgt Ion	Resp	Lower	Upper
152	69478		
152	100		
115	61.1	29.9	89.7
150	157.0	0.0	340.6

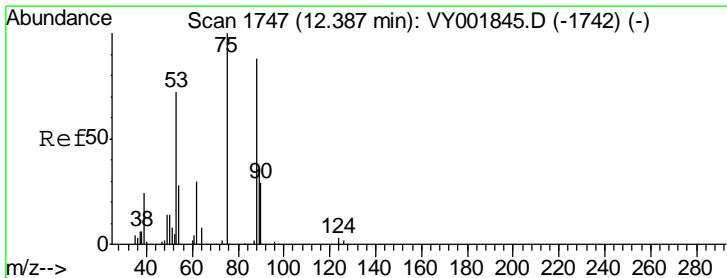
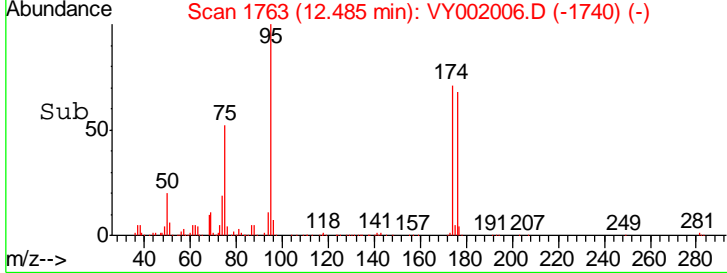
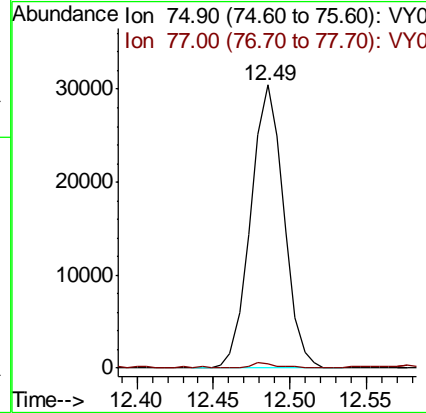
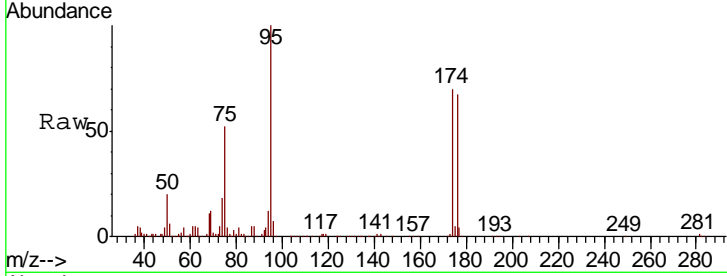




#76  
 1,2,3-Trichloropropane  
 Concen: 55.569 ug/l  
 RT: 12.49 min Scan# 1763  
 Delta R.T. -0.16 min  
 Lab File: VY002006.D  
 Acq: 18 Mar 2020 12:09

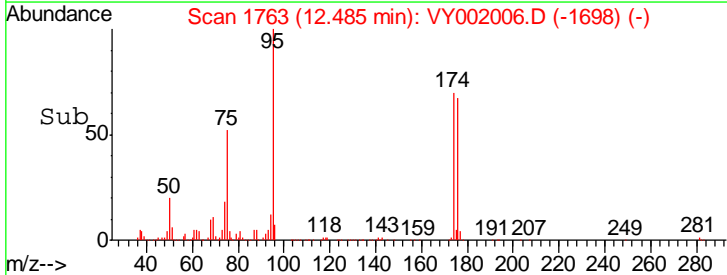
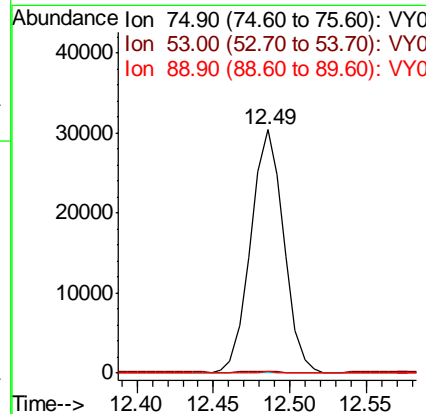
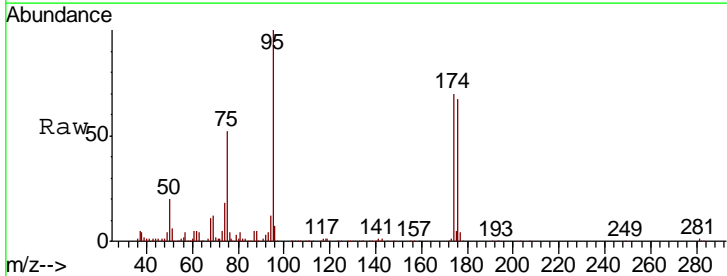
Instrument : MSVOA\_Y  
 ClientSampled : GHD1-SB-03-1.5-2.5

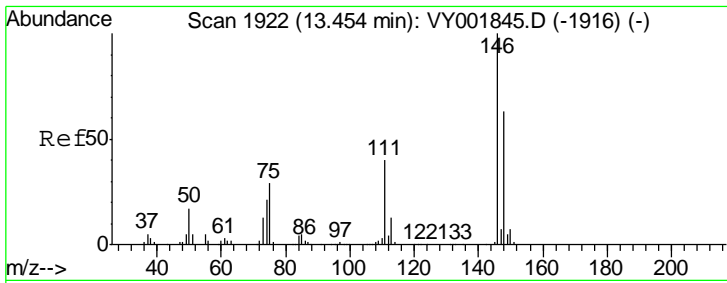
Tgt Ion	Resp	Lower	Upper
75	100		
77	1.7	0.0	0.0#



#81  
 trans-1,4-Dichloro-2-butene  
 Concen: 112.246 ug/l  
 RT: 12.49 min Scan# 1763  
 Delta R.T. 0.10 min  
 Lab File: VY002006.D  
 Acq: 18 Mar 2020 12:09

Tgt Ion	Resp	Lower	Upper
75	100		
53	0.8	65.4	98.0#
89	0.2	36.0	54.0#

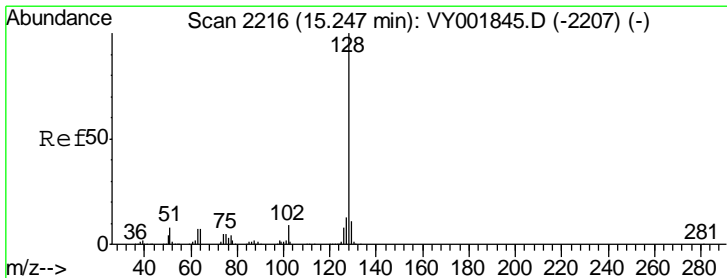
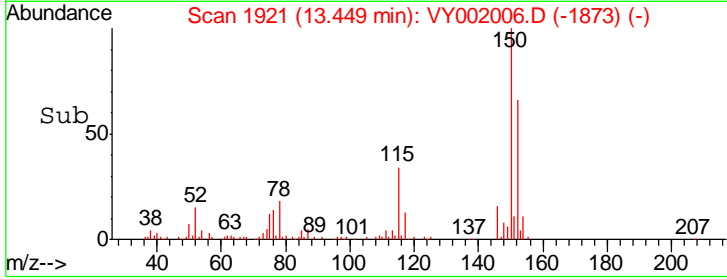
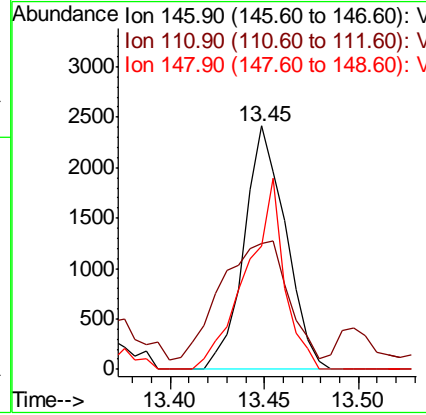
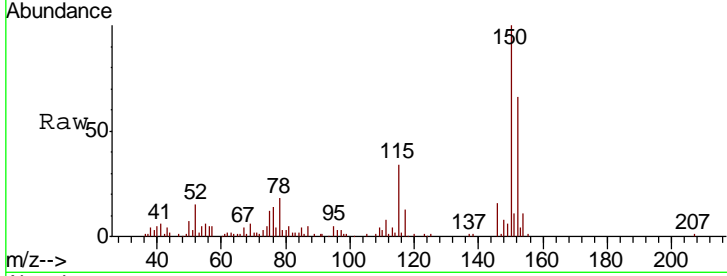




#88  
 1,4-Dichlorobenzene  
 Concen: 1.654 ug/l  
 RT: 13.45 min Scan# 1921  
 Delta R.T. -0.01 min  
 Lab File: VY002006.D  
 Acq: 18 Mar 2020 12:09

Instrument : MSVOA\_Y  
 ClientSampled : GHD1-SB-03-1.5-2.5

Tgt Ion	Resp	Lower	Upper
146	100		
111	80.4	20.0	60.0#
148	71.2	31.5	94.5



#95  
 Naphthalene  
 Concen: 2.171 ug/l  
 RT: 15.24 min Scan# 2215  
 Delta R.T. -0.01 min  
 Lab File: VY002006.D  
 Acq: 18 Mar 2020 12:09

Tgt Ion	Resp	Lower	Upper
128	100		
127	15.0	10.1	15.1
129	11.6	8.6	13.0

