

Data Path : Z:\VOASRV\HPCHEM1\MSVOA Y\DATA\VY031920\  
 Data File : VY002013.D  
 Acq On : 19 Mar 2020 11:54  
 Operator : SY/MD  
 Sample : VY0319SBL01  
 Misc : 5.00G/5ML/MSVOA Y/SOIL  
 ALS Vial : 3 Sample Multiplier: 1

Instrument :  
 MSVOA\_Y  
 ClientSampleId :  
 VY0319SBL01

Quant Time: Mar 20 01:54:31 2020  
 Quant Method : Z:\VOASRV\HPCHEM1\MSVOA\_Y\METHODS\82Y030420S.M  
 Quant Title : SW846 8260  
 QLast Update : Thu Mar 05 04:05:33 2020  
 Response via : Initial Calibration

Internal Standards	R.T.	QIon	Response	Conc	Units	Dev(Min)
1) Pentafluorobenzene	7.82	168	147327	50.00	ug/l	0.00
34) 1,4-Difluorobenzene	8.71	114	282478	50.00	ug/l	0.00
63) Chlorobenzene-d5	11.50	117	257318	50.00	ug/l	0.00
72) 1,4-Dichlorobenzene-d4	13.44	152	109835	50.00	ug/l	0.00

## System Monitoring Compounds

33) 1,2-Dichloroethane-d4	8.16	65	86433	54.95	ug/l	0.00
Spiked Amount	50.000		Recovery	=	109.90%	
35) Dibromofluoromethane	7.74	113	82464	53.46	ug/l	0.00
Spiked Amount	50.000		Recovery	=	106.92%	
50) Toluene-d8	10.19	98	342990	52.73	ug/l	0.00
Spiked Amount	50.000		Recovery	=	105.46%	
62) 4-Bromofluorobenzene	12.49	95	114670	50.70	ug/l	0.00
Spiked Amount	50.000		Recovery	=	101.40%	

## Target Compounds

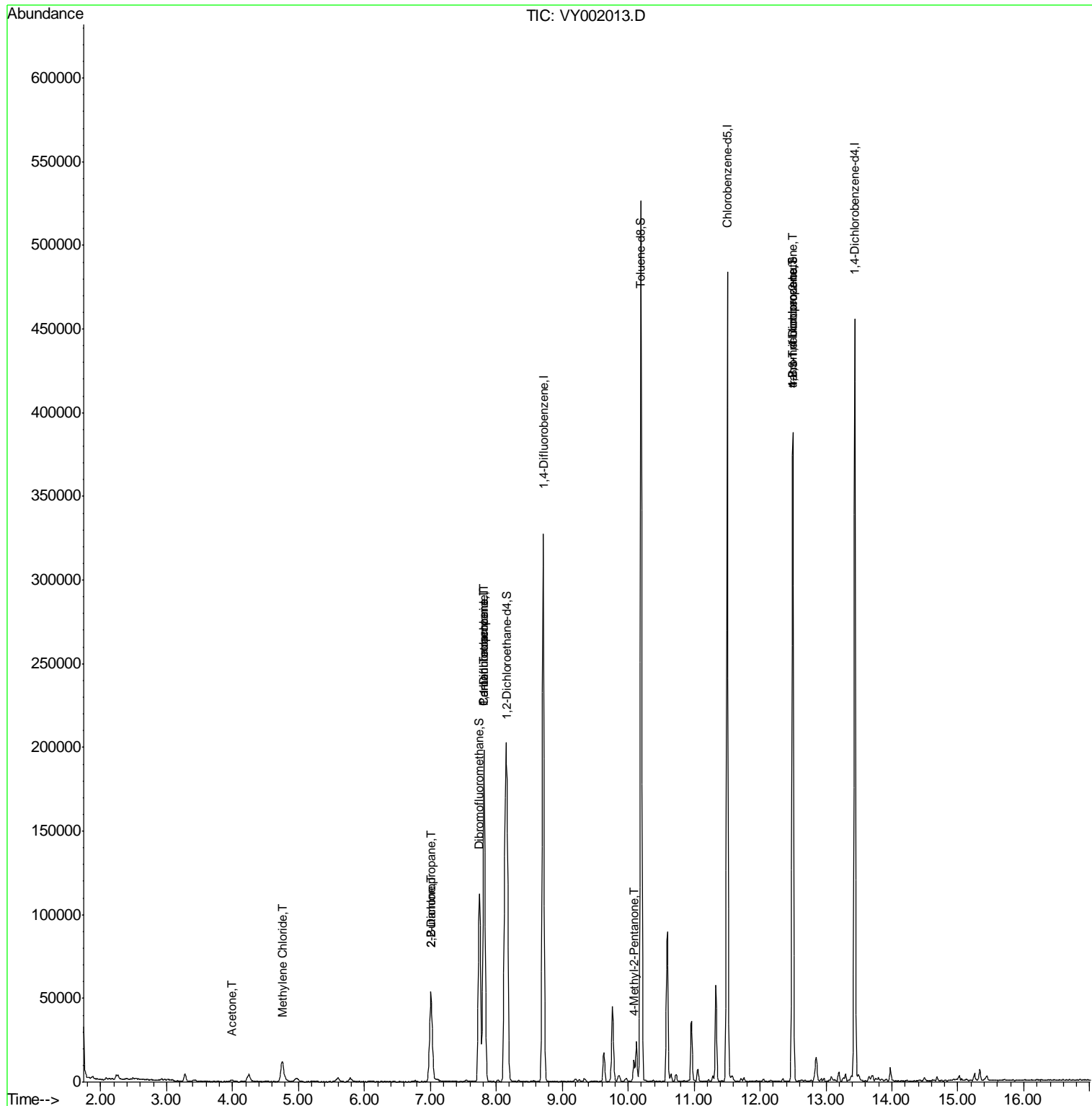
	R.T.	QIon	Response	Conc	Units	Qvalue
5) Bromomethane	2.68	94	154	Below Cal	#	4
11) Tert butyl alcohol	4.97	59	1326	Below Cal	#	85
16) Acetone	4.00	43	1794	3.916	ug/l #	78
20) Methylene Chloride	4.75	84	8303	4.229	ug/l	89
25) 2-Butanone	7.00	43	2839	4.075	ug/l #	68
26) 2,2-Dichloropropane	7.01	77	3960	1.497	ug/l #	52
36) 1,1-Dichloropropene	7.81	75	12584	4.629	ug/l #	50
38) Carbon Tetrachloride	7.82	117	15337	6.605	ug/l #	16
51) 4-Methyl-2-Pentanone	10.09	43	9224	5.987	ug/l	99
76) 1,2,3-Trichloropropane	12.49	75	59424	45.596	ug/l #	100
81) trans-1,4-Dichloro-2-buten	12.49	75	59424	92.102	ug/l #	17

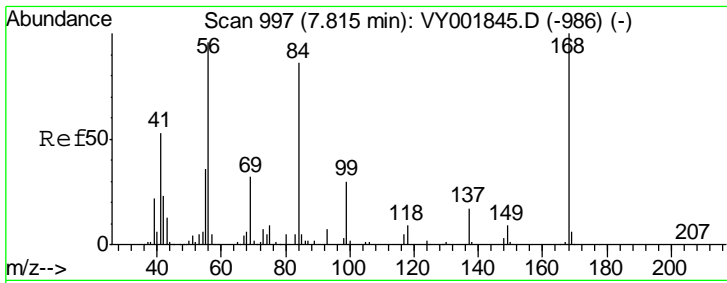
(#) = qualifier out of range (m) = manual integration (+) = signals summed

Data Path : Z:\VOASRV\HPCHEM1\MSVOA Y\DATA\VY031920\  
 Data File : VY002013.D  
 Acq On : 19 Mar 2020 11:54  
 Operator : SY/MD  
 Sample : VY0319SBL01  
 Misc : 5.00G/5ML/MSVOA Y/SOIL  
 ALS Vial : 3 Sample Multiplier: 1

Instrument :  
 MSVOA\_Y  
 Client Sampled :  
 VY0319SBL01

Quant Time: Mar 20 01:54:31 2020  
 Quant Method : Z:\VOASRV\HPCHEM1\MSVOA\_Y\METHODS\82Y030420S.M  
 Quant Title : SW846 8260  
 QLast Update : Thu Mar 05 04:05:33 2020  
 Response via : Initial Calibration

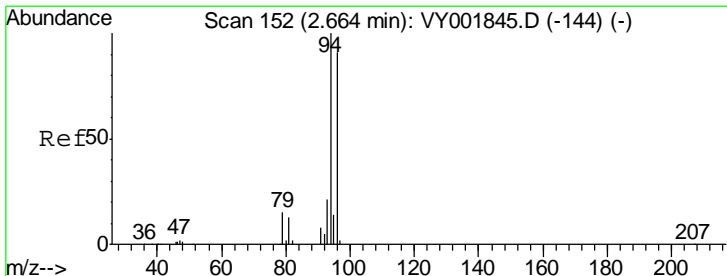
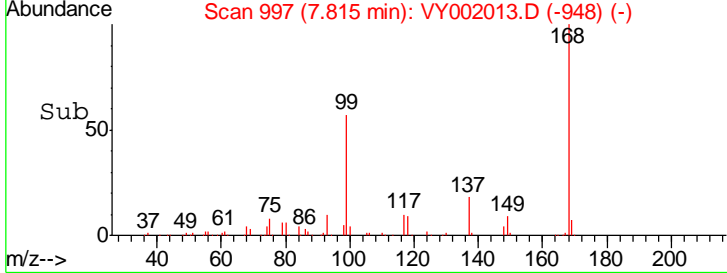
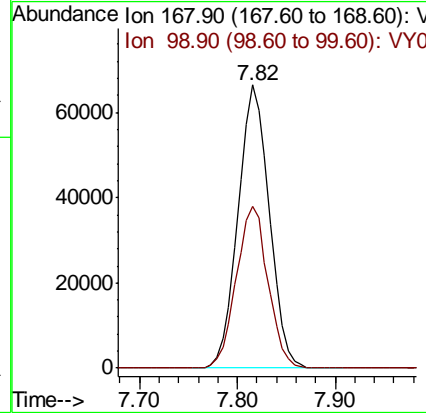
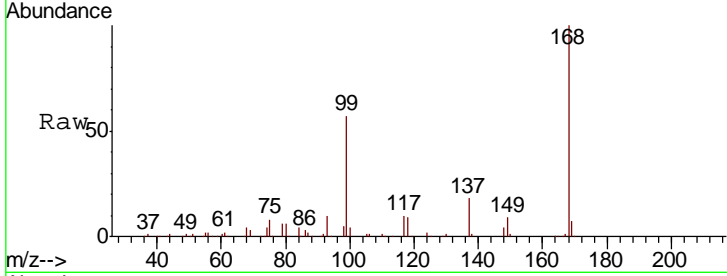




#1  
 Pentafluorobenzene  
 Concen: 50.000 ug/l  
 RT: 7.82 min Scan# 997  
 Delta R.T. 0.00 min  
 Lab File: VY002013.D  
 Acq: 19 Mar 2020 11:54

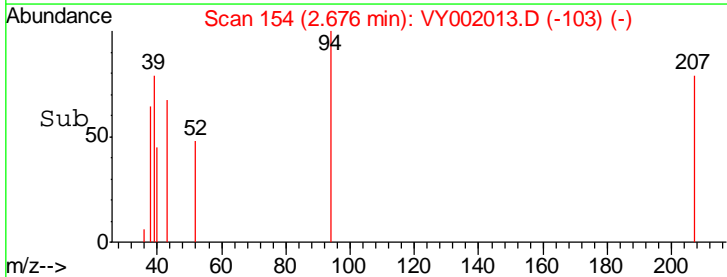
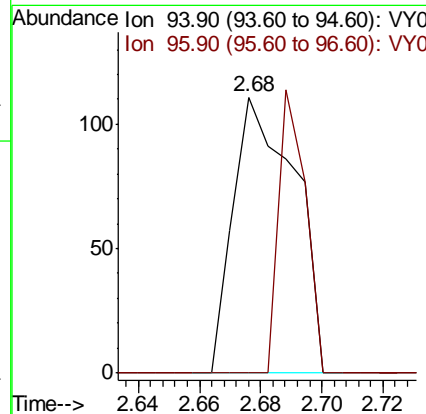
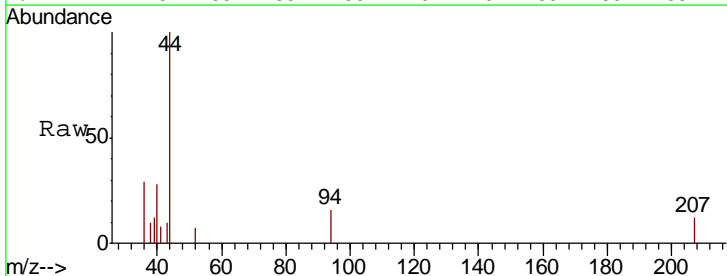
Instrument :  
 MSVOA\_Y  
 ClientSampled :  
 VY0319SBL01

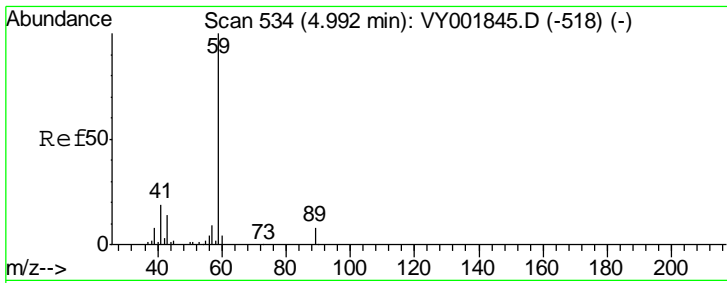
Tgt Ion: 168 Resp: 147327  
 Ion Ratio Lower Upper  
 168 100  
 99 57.1 46.7 70.1



#5  
 Bromomethane  
 Concen: Below Cal  
 RT: 2.68 min Scan# 154  
 Delta R.T. 0.01 min  
 Lab File: VY002013.D  
 Acq: 19 Mar 2020 11:54

Tgt Ion: 94 Resp: 154  
 Ion Ratio Lower Upper  
 94 100  
 96 0.0 73.2 109.8#

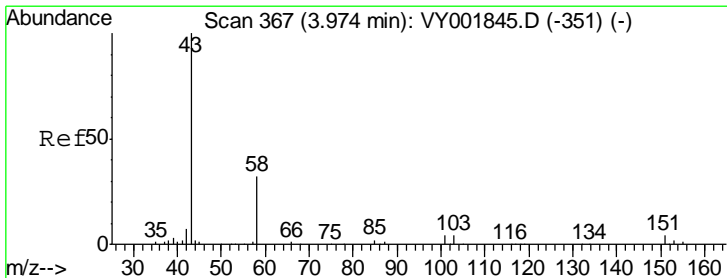
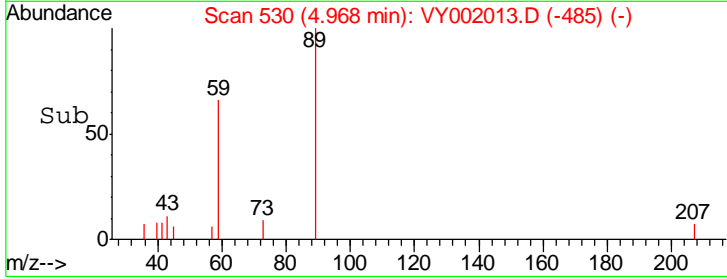
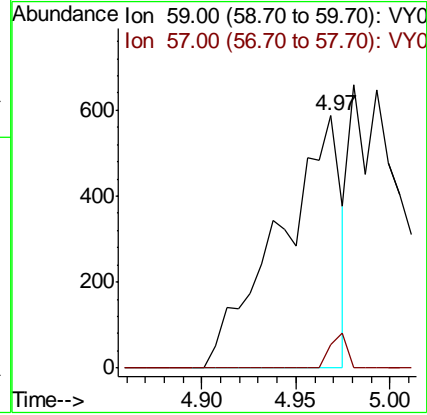
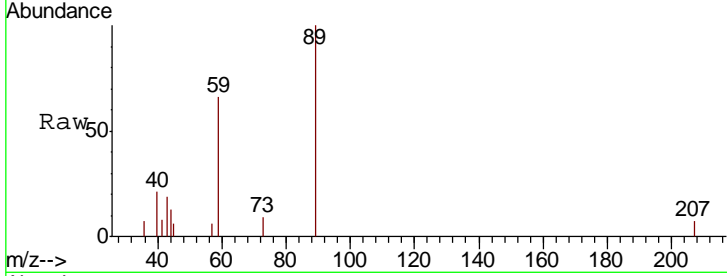




#11  
 Tert butyl alcohol  
 Concen: Below Cal  
 RT: 4.97 min Scan# 530  
 Delta R.T. -0.02 min  
 Lab File: VY002013.D  
 Acq: 19 Mar 2020 11:54

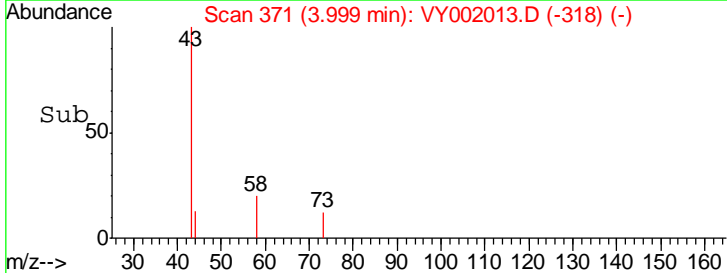
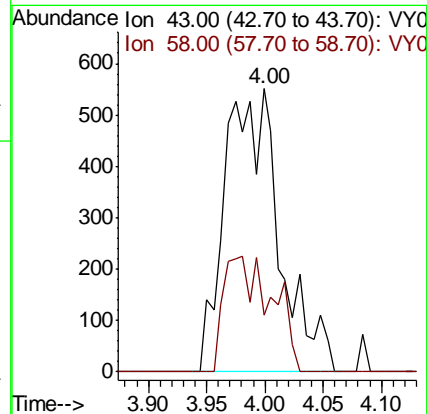
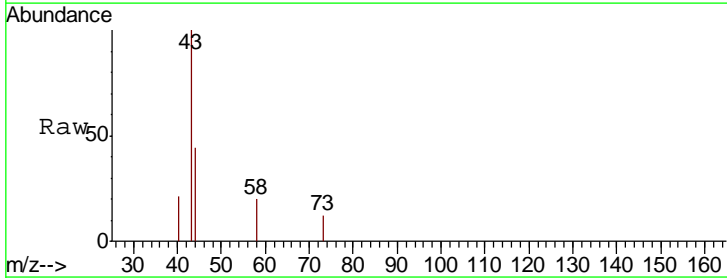
Instrument : MSVOA\_Y  
 ClientSampled : VY0319SBL01

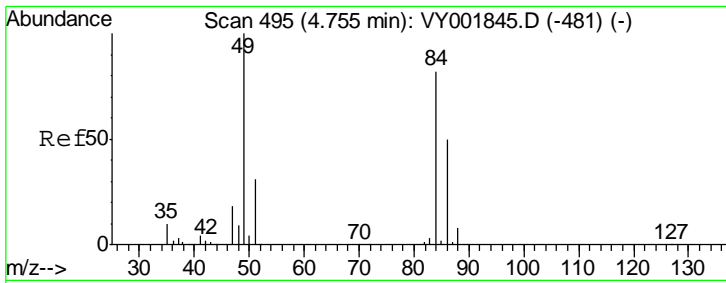
Tgt Ion: 59 Resp: 1326  
 Ion Ratio Lower Upper  
 59 100  
 57 3.8 7.4 11.2#



#16  
 Acetone  
 Concen: 3.916 ug/l  
 RT: 4.00 min Scan# 371  
 Delta R.T. 0.02 min  
 Lab File: VY002013.D  
 Acq: 19 Mar 2020 11:54

Tgt Ion: 43 Resp: 1794  
 Ion Ratio Lower Upper  
 43 100  
 58 20.0 25.9 38.9#

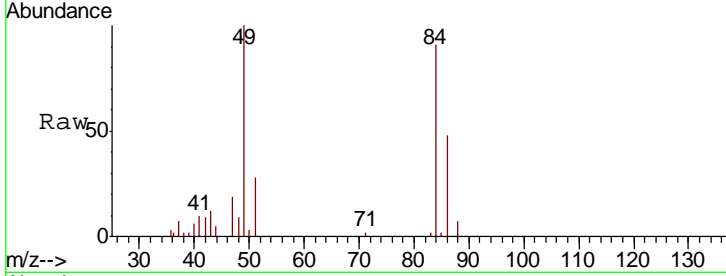




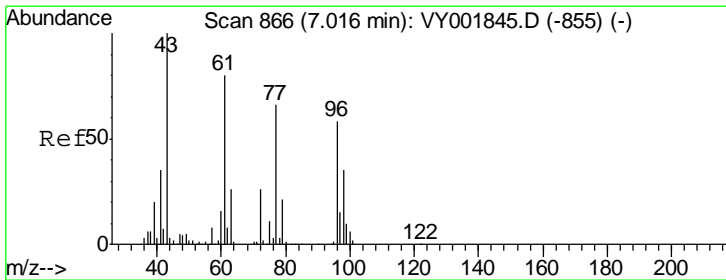
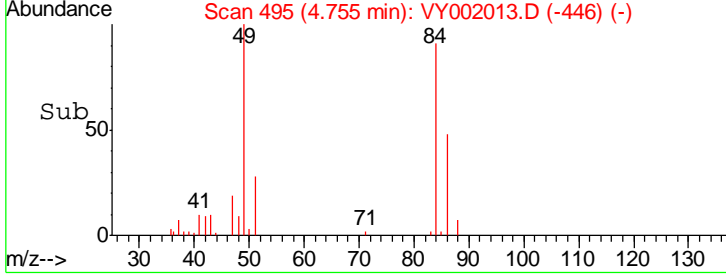
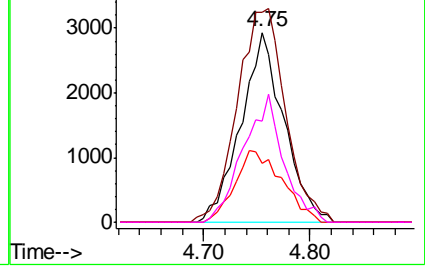
#20  
 Methylene Chloride  
 Concen: 4.229 ug/l  
 RT: 4.75 min Scan# 495  
 Delta R.T. 0.00 min  
 Lab File: VY002013.D  
 Acq: 19 Mar 2020 11:54

Instrument :  
 MSVOA\_Y  
 ClientSampled :  
 VY0319SBL01

Tgt Ion	Resp	Lower	Upper
84	100		
49	110.3	98.2	147.2
51	30.9	30.2	45.2
86	53.1	48.9	73.3

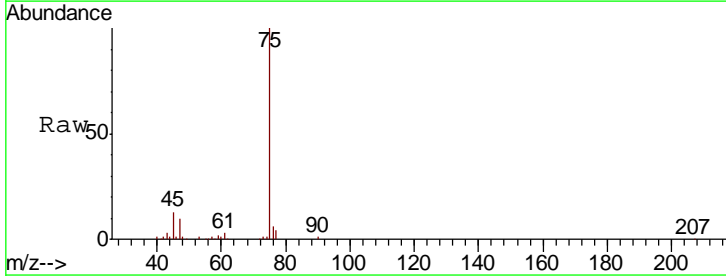


Abundance Ion 83.90 (83.60 to 84.60): VY0  
 Ion 48.90 (48.60 to 49.60): VY0  
 Ion 50.90 (50.60 to 51.60): VY0  
 Ion 85.90 (85.60 to 86.60): VY0

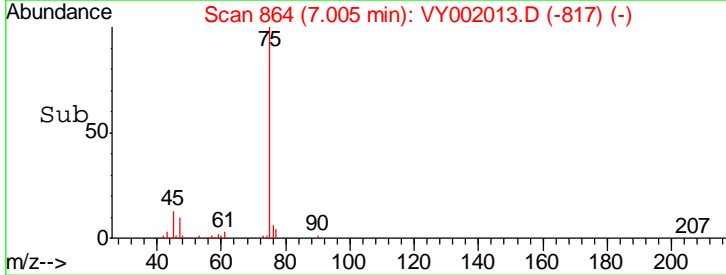
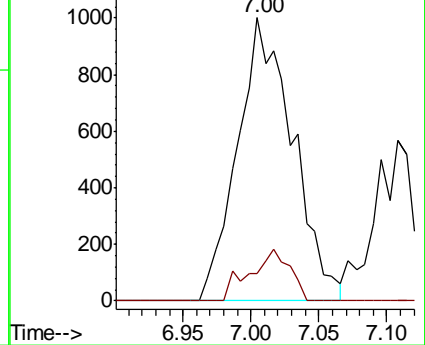


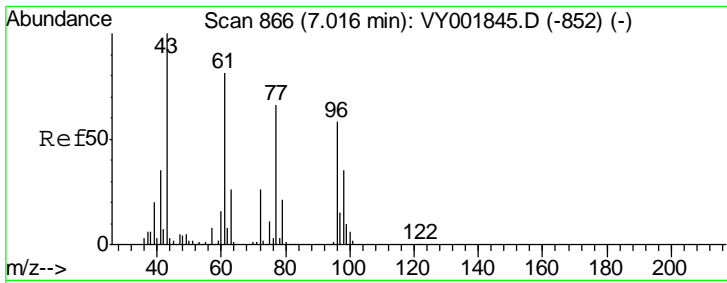
#25  
 2-Butanone  
 Concen: 4.075 ug/l  
 RT: 7.00 min Scan# 864  
 Delta R.T. -0.01 min  
 Lab File: VY002013.D  
 Acq: 19 Mar 2020 11:54

Tgt Ion	Resp	Lower	Upper
43	100		
72	9.8	20.9	31.3#



Abundance Ion 43.00 (42.70 to 43.70): VY0  
 Ion 72.00 (71.70 to 72.70): VY0

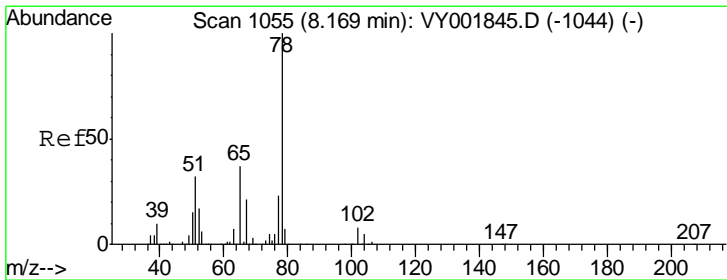
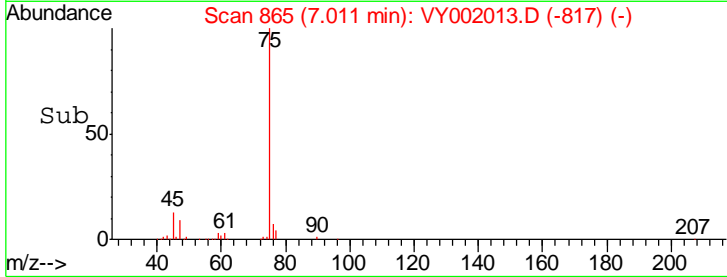
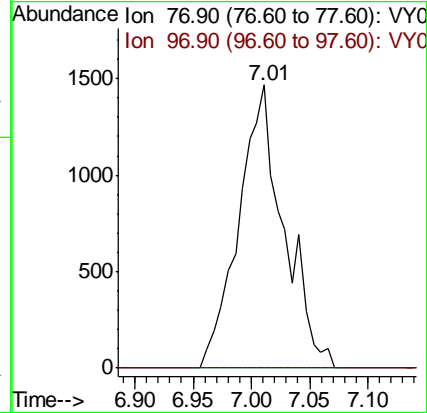
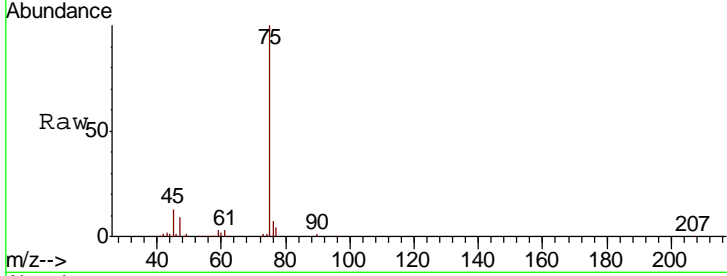




#26  
 2,2-Dichloropropane  
 Concen: 1.497 ug/l  
 RT: 7.01 min Scan# 865  
 Delta R.T. -0.01 min  
 Lab File: VY002013.D  
 Acq: 19 Mar 2020 11:54

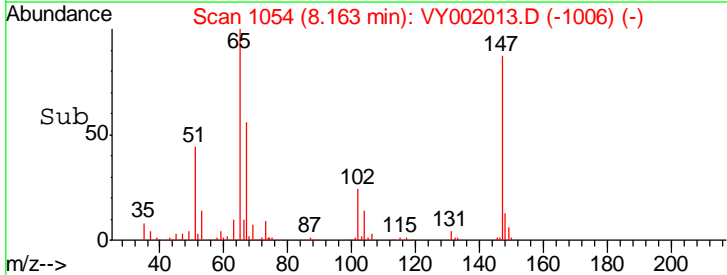
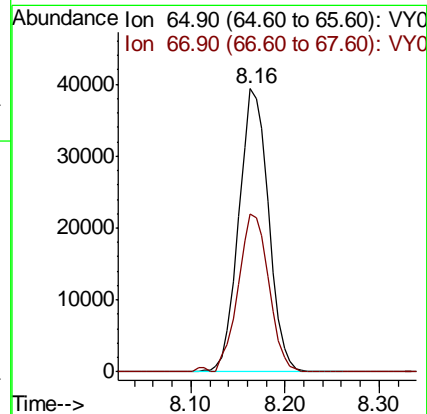
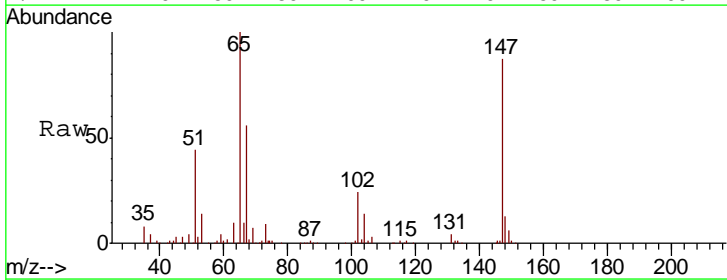
Instrument :  
 MSVOA\_Y  
 ClientSampled :  
 VY0319SBL01

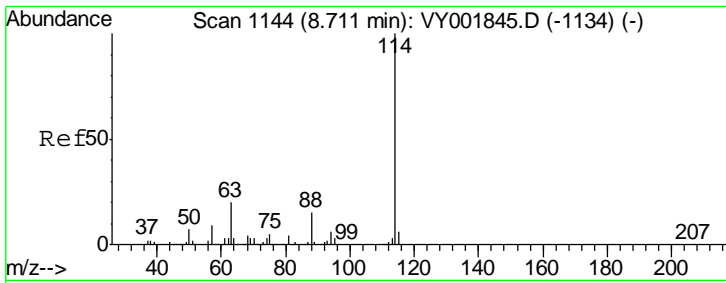
Tgt Ion: 77 Resp: 3960  
 Ion Ratio Lower Upper  
 77 100  
 97 0.0 11.9 35.7#



#33  
 1,2-Dichloroethane-d4  
 Concen: 54.954 ug/l  
 RT: 8.16 min Scan# 1054  
 Delta R.T. -0.01 min  
 Lab File: VY002013.D  
 Acq: 19 Mar 2020 11:54

Tgt Ion: 65 Resp: 86433  
 Ion Ratio Lower Upper  
 65 100  
 67 57.3 0.0 110.8

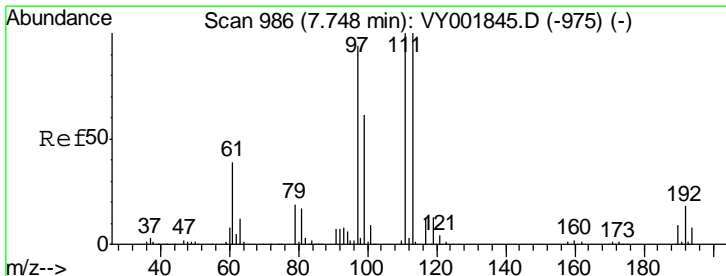
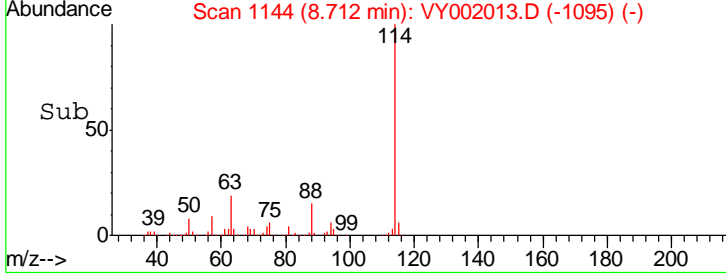
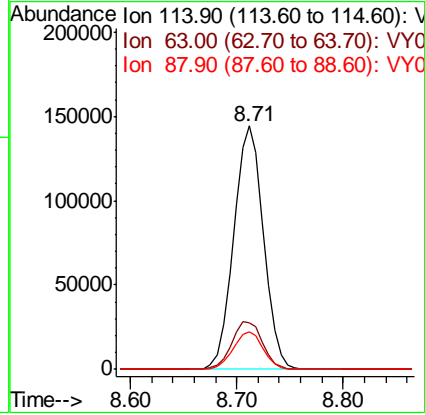
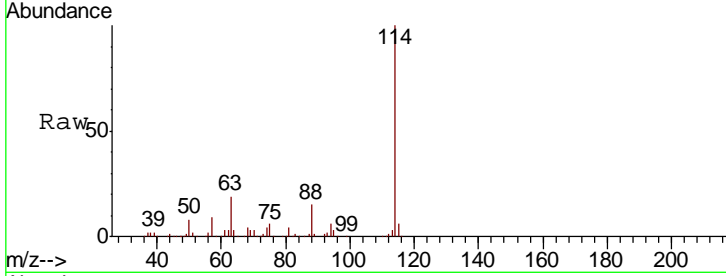




#34  
 1,4-Difluorobenzene  
 Concen: 50.000 ug/l  
 RT: 8.71 min Scan# 1144  
 Delta R.T. 0.00 min  
 Lab File: VY002013.D  
 Acq: 19 Mar 2020 11:54

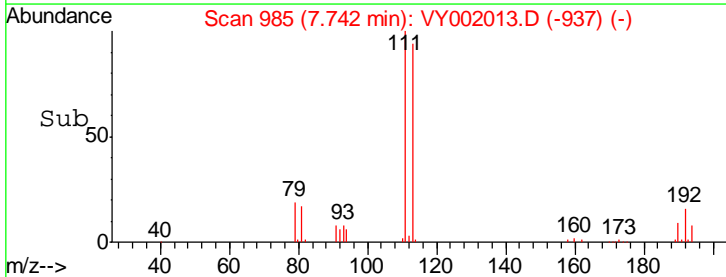
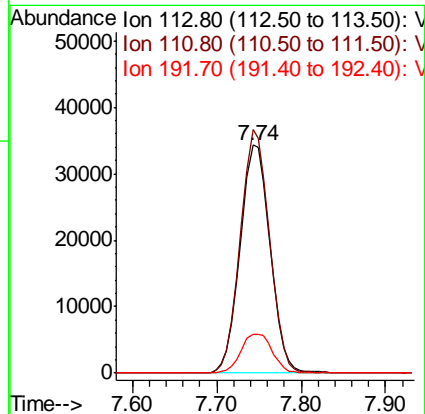
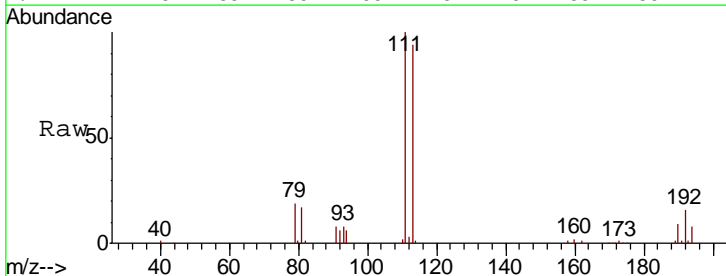
Instrument : MSVOA\_Y  
 ClientSampled : VY0319SBL01

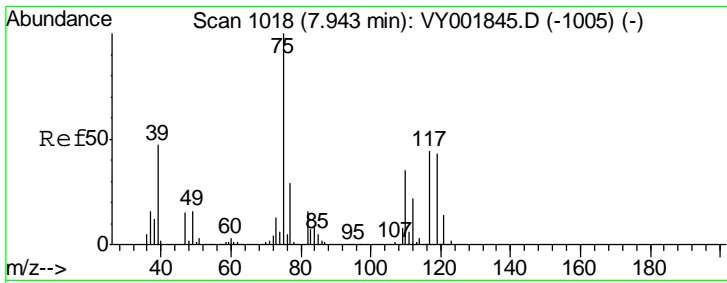
Tgt Ion	Resp	Lower	Upper
114	100		
63	19.4	0.0	39.4
88	15.4	0.0	30.4



#35  
 Dibromofluoromethane  
 Concen: 53.463 ug/l  
 RT: 7.74 min Scan# 985  
 Delta R.T. -0.01 min  
 Lab File: VY002013.D  
 Acq: 19 Mar 2020 11:54

Tgt Ion	Resp	Lower	Upper
113	100		
111	103.6	81.8	122.8
192	18.0	14.2	21.2

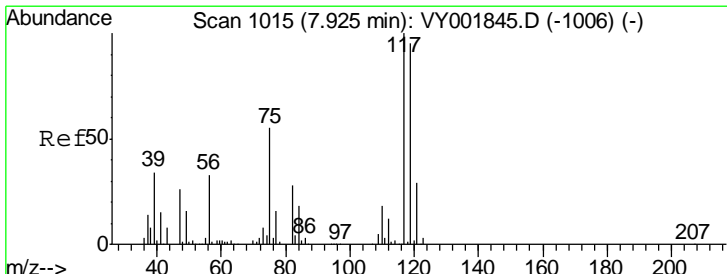
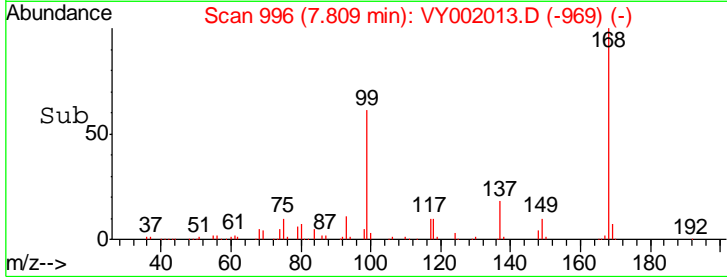
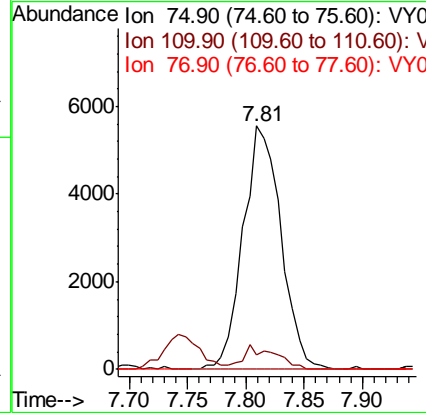
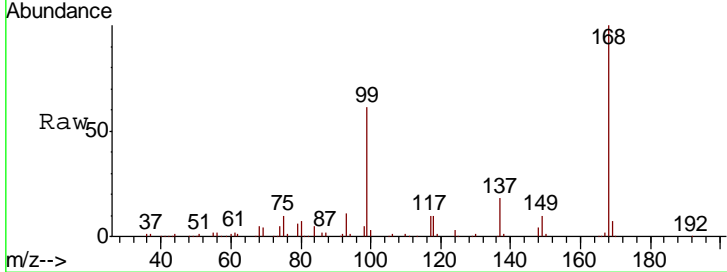




#36  
 1,1-Dichloropropene  
 Concen: 4.629 ug/l  
 RT: 7.81 min Scan# 996  
 Delta R.T. -0.13 min  
 Lab File: VY002013.D  
 Acq: 19 Mar 2020 11:54

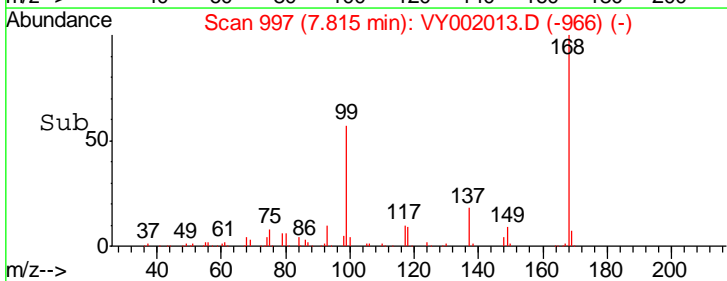
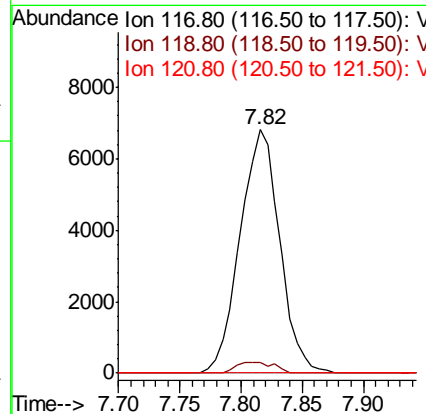
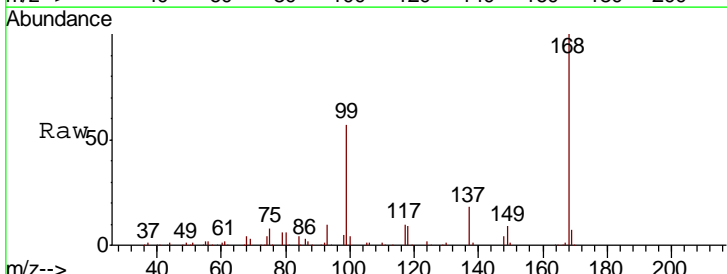
Instrument : MSVOA\_Y  
 ClientSampled : VY0319SBL01

Tgt Ion	Resp	Lower	Upper
75	100		
110	8.3	17.4	52.2#
77	0.0	24.2	36.2#

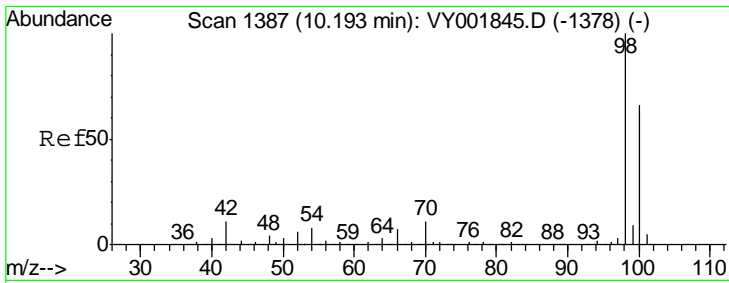


#38  
 Carbon Tetrachloride  
 Concen: 6.605 ug/l  
 RT: 7.82 min Scan# 997  
 Delta R.T. -0.11 min  
 Lab File: VY002013.D  
 Acq: 19 Mar 2020 11:54

Tgt Ion	Resp	Lower	Upper
117	100		
119	4.5	76.3	114.5#
121	0.0	23.5	35.3#



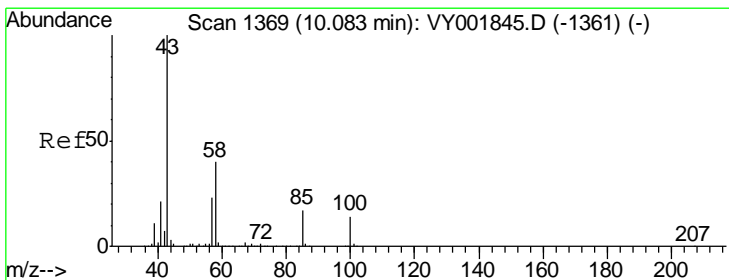
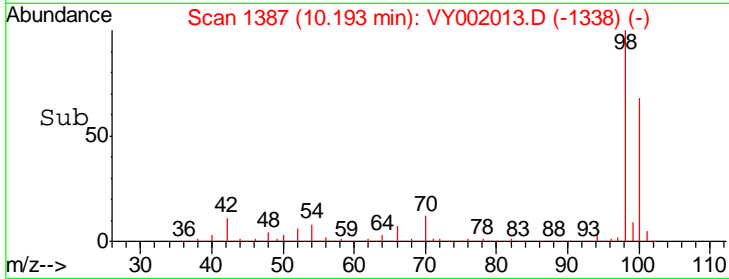
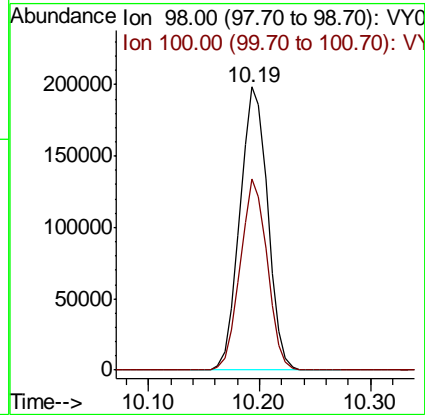
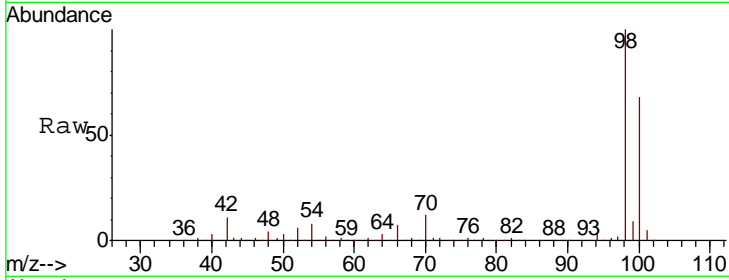




#50  
 Toluene-d8  
 Concen: 52.733 ug/l  
 RT: 10.19 min Scan# 1387  
 Delta R.T. 0.00 min  
 Lab File: VY002013.D  
 Acq: 19 Mar 2020 11:54

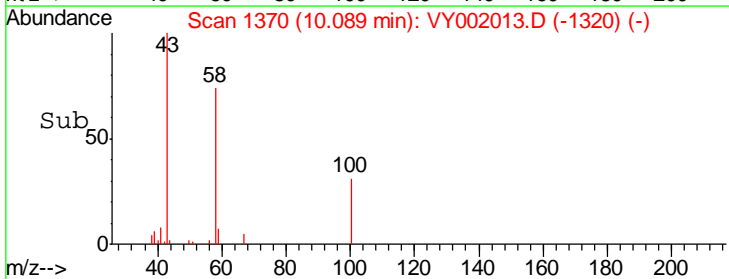
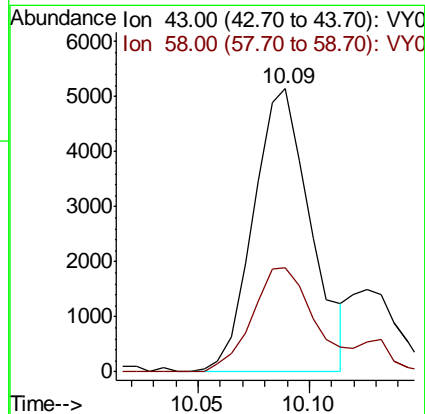
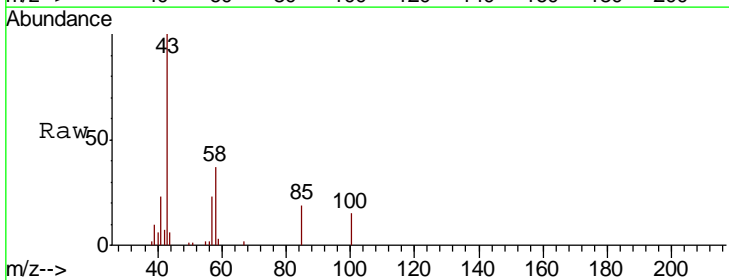
Instrument :  
 MSVOA\_Y  
 ClientSampled :  
 VY0319SBL01

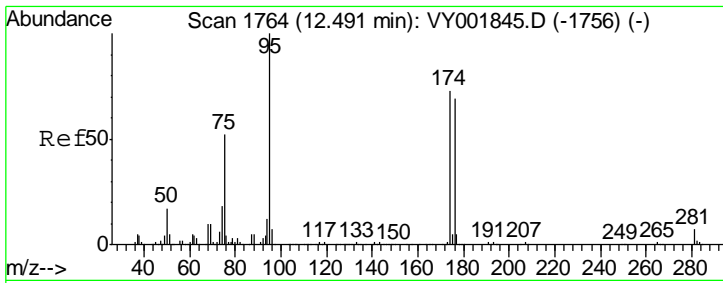
Tgt Ion: 98 Resp: 342990  
 Ion Ratio Lower Upper  
 98 100  
 100 65.6 53.0 79.4



#51  
 4-Methyl-2-Pentanone  
 Concen: 5.987 ug/l  
 RT: 10.09 min Scan# 1370  
 Delta R.T. 0.01 min  
 Lab File: VY002013.D  
 Acq: 19 Mar 2020 11:54

Tgt Ion: 43 Resp: 9224  
 Ion Ratio Lower Upper  
 43 100  
 58 40.6 32.0 48.0

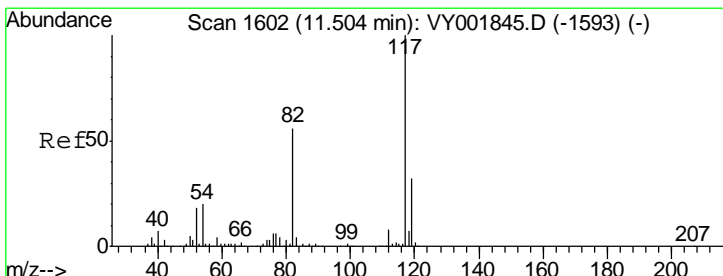
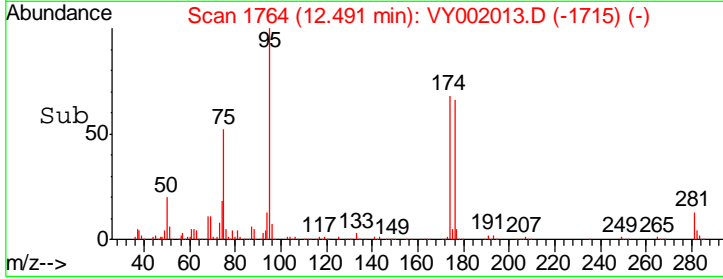
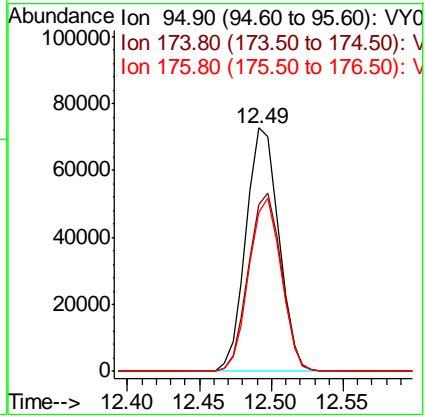
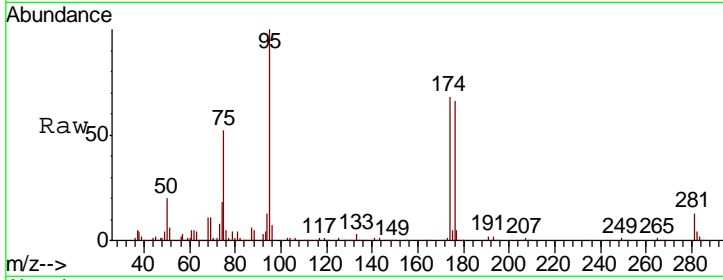




#62  
 4-Bromofluorobenzene  
 Concen: 50.703 ug/l  
 RT: 12.49 min Scan# 1764  
 Delta R.T. 0.00 min  
 Lab File: VY002013.D  
 Acq: 19 Mar 2020 11:54

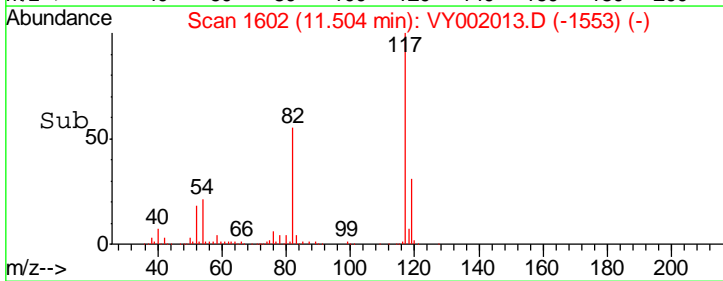
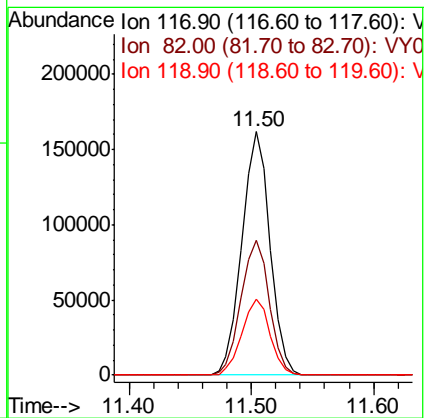
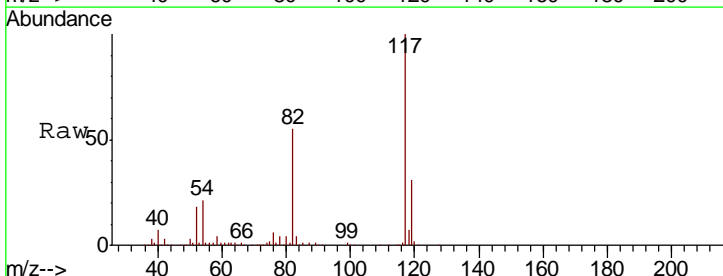
Instrument : MSVOA\_Y  
 ClientSampled : VY0319SBL01

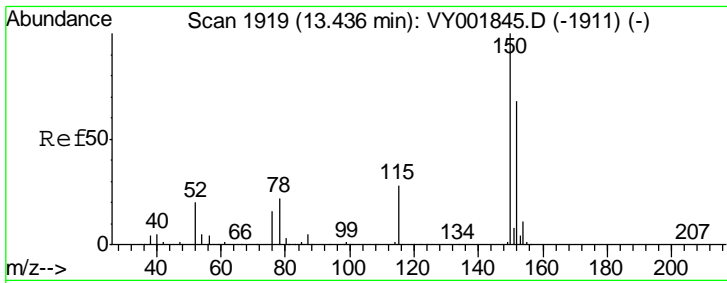
Tgt Ion	Resp	Lower	Upper
95	114670		
174	73.3	0.0	145.0
176	70.2	0.0	137.4



#63  
 Chlorobenzene-d5  
 Concen: 50.000 ug/l  
 RT: 11.50 min Scan# 1602  
 Delta R.T. 0.00 min  
 Lab File: VY002013.D  
 Acq: 19 Mar 2020 11:54

Tgt Ion	Resp	Lower	Upper
117	257318		
82	55.1	44.5	66.7
119	31.2	25.7	38.5

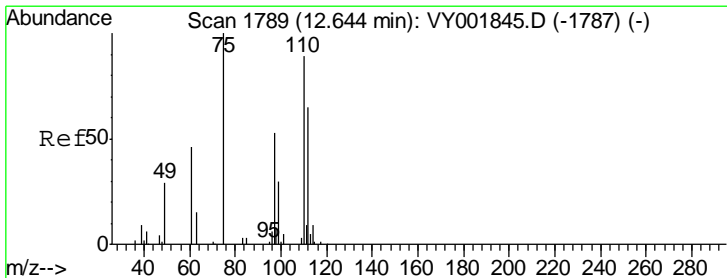
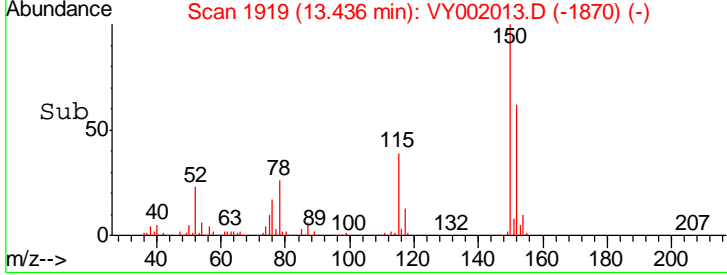
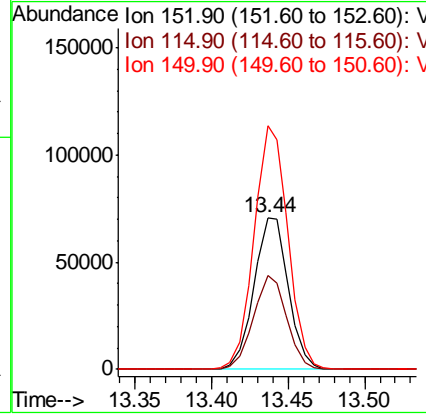
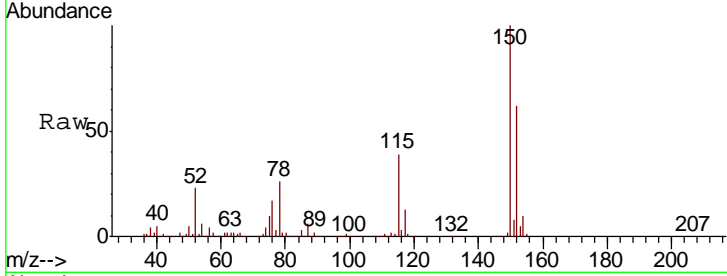




#72  
 1,4-Dichlorobenzene-d4  
 Concen: 50.000 ug/l  
 RT: 13.44 min Scan# 1919  
 Delta R.T. 0.00 min  
 Lab File: VY002013.D  
 Acq: 19 Mar 2020 11:54

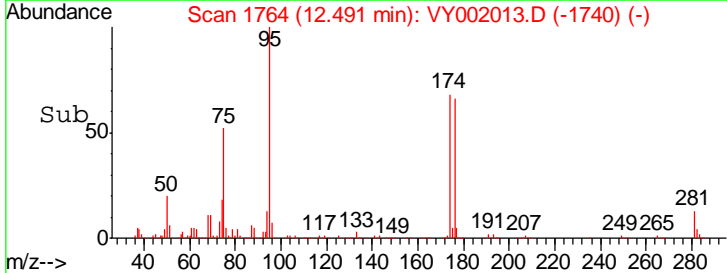
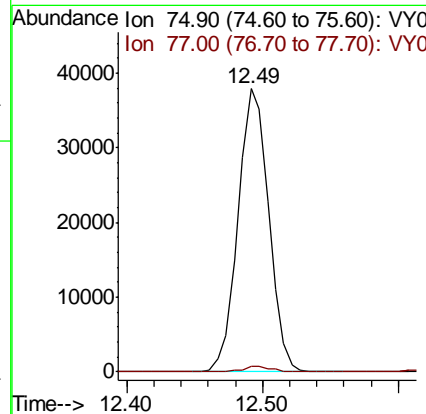
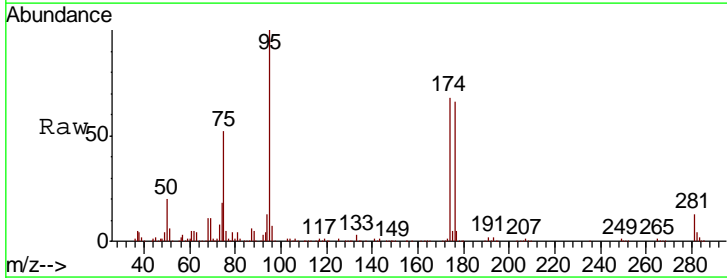
Instrument :  
 MSVOA\_Y  
 ClientSampleId :  
 VY0319SBL01

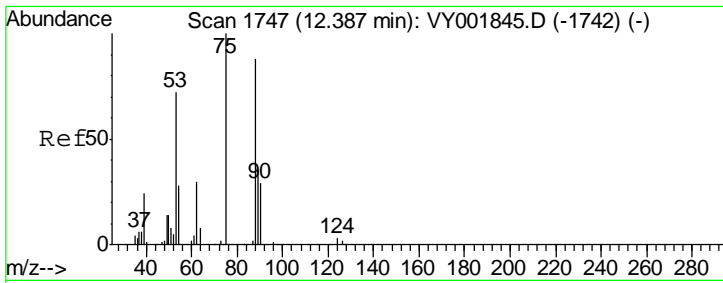
Tgt Ion	Resp	Lower	Upper
152	109835		
152	100		
115	60.3	29.9	89.7
150	158.4	0.0	340.6



#76  
 1,2,3-Trichloropropane  
 Concen: 45.596 ug/l  
 RT: 12.49 min Scan# 1764  
 Delta R.T. -0.15 min  
 Lab File: VY002013.D  
 Acq: 19 Mar 2020 11:54

Tgt Ion	Resp	Lower	Upper
75	59424		
75	100		
77	1.7	0.0	0.0#

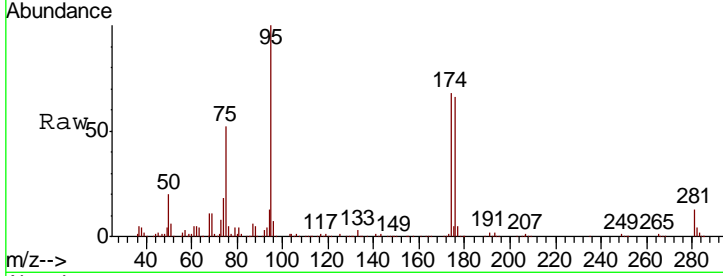




#81  
 trans-1,4-Dichloro-2-butene  
 Concen: 92.102 ug/l  
 RT: 12.49 min Scan# 1764  
 Delta R.T. 0.10 min  
 Lab File: VY002013.D  
 Acq: 19 Mar 2020 11:54

Instrument :  
 MSVOA\_Y  
 ClientSampleId :  
 VY0319SBL01

Tot Ion	Resp	Lower	Upper
75	100		
53	0.0	65.4	98.0#
89	0.6	36.0	54.0#



Abundance Ion 74.90 (74.60 to 75.60): VY0  
 Ion 53.00 (52.70 to 53.70): VY0  
 Ion 88.90 (88.60 to 89.60): VY0

