

Data Path : Z:\VOASRV\HPCHEM1\MSVOA Y\DATA\VY031920\
 Data File : VY002016.D
 Acq On : 19 Mar 2020 13:14
 Operator : SY/MD
 Sample : L1978-02
 Misc : 5.01G/5ML/MSVOA Y/SOIL
 ALS Vial : 6 Sample Multiplier: 1

Instrument :
 MSVOA_Y
 ClientSampleId :

Quant Time: Mar 20 01:56:03 2020
 Quant Method : Z:\VOASRV\HPCHEM1\MSVOA_Y\METHODS\82Y030420S.M
 Quant Title : SW846 8260
 QLast Update : Thu Mar 05 04:05:33 2020
 Response via : Initial Calibration

Internal Standards	R.T.	QIon	Response	Conc	Units	Dev(Min)
1) Pentafluorobenzene	7.82	168	145449	50.00	ug/l	0.00
34) 1,4-Difluorobenzene	8.71	114	280277	50.00	ug/l	0.00
63) Chlorobenzene-d5	11.50	117	258591	50.00	ug/l	0.00
72) 1,4-Dichlorobenzene-d4	13.44	152	113352	50.00	ug/l	0.00

System Monitoring Compounds

33) 1,2-Dichloroethane-d4	8.17	65	87954	56.64	ug/l	0.00
Spiked Amount				50.000		
			Recovery	=	113.28%	
35) Dibromofluoromethane	7.74	113	82657	54.01	ug/l	0.00
Spiked Amount				50.000		
			Recovery	=	108.02%	
50) Toluene-d8	10.19	98	343899	53.29	ug/l	0.00
Spiked Amount				50.000		
			Recovery	=	106.58%	
62) 4-Bromofluorobenzene	12.49	95	117041	52.16	ug/l	0.00
Spiked Amount				50.000		
			Recovery	=	104.32%	

Target Compounds

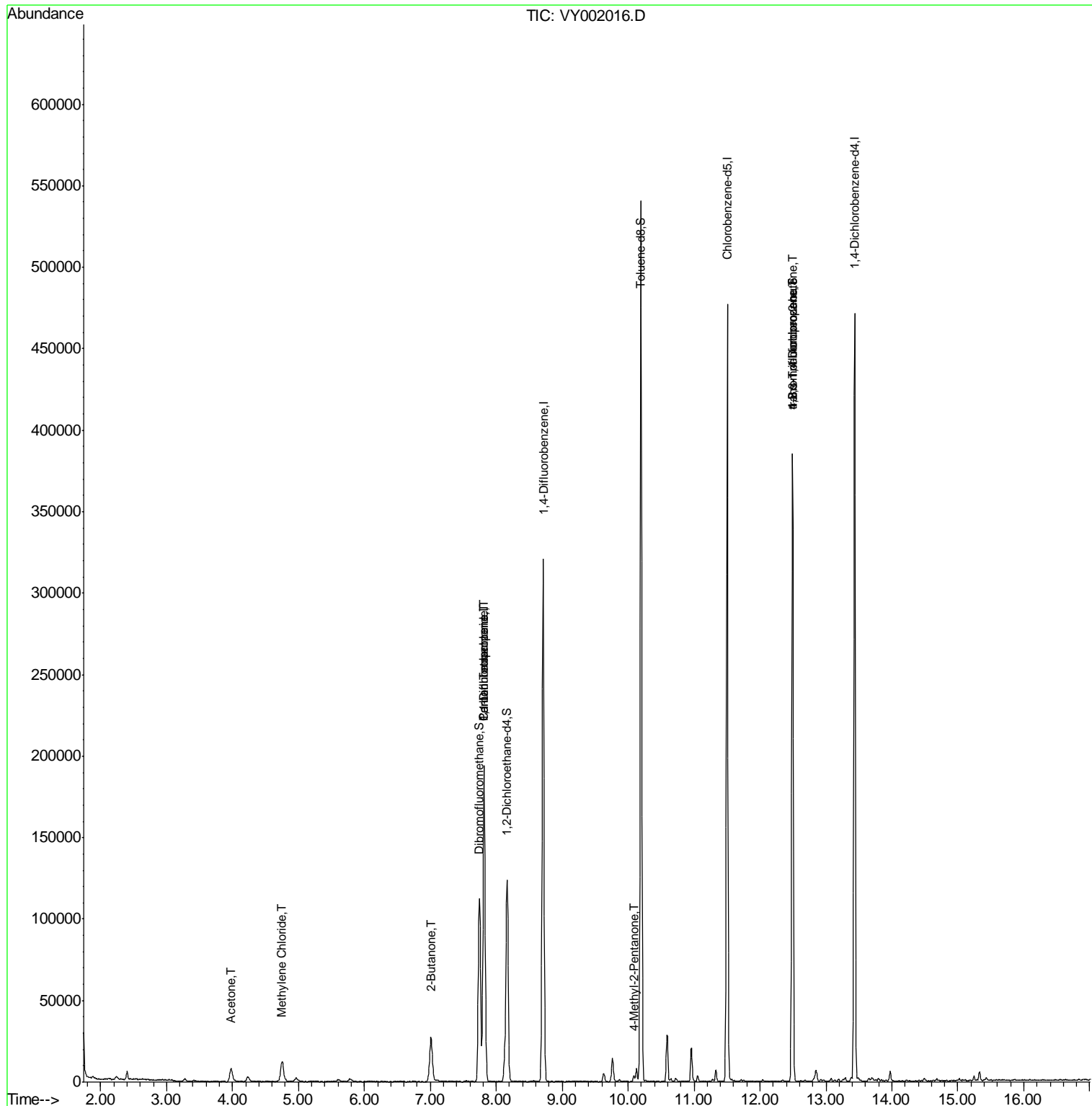
					Qvalue
5) Bromomethane	2.68	94	116	Below Cal	# 62
11) Tert butyl alcohol	4.97	59	2439	Below Cal	# 74
16) Acetone	3.98	43	15379	34.005	ug/l 100
20) Methylene Chloride	4.75	84	8902	4.593	ug/l # 79
25) 2-Butanone	7.02	43	5356	7.788	ug/l 94
36) 1,1-Dichloropropene	7.82	75	11997	4.448	ug/l # 50
38) Carbon Tetrachloride	7.82	117	14755	6.404	ug/l # 16
51) 4-Methyl-2-Pentanone	10.09	43	2716	1.777	ug/l 96
76) 1,2,3-Trichloropropane	12.49	75	60271	44.811	ug/l # 100
81) trans-1,4-Dichloro-2-buten	12.49	75	60271	90.517	ug/l # 17

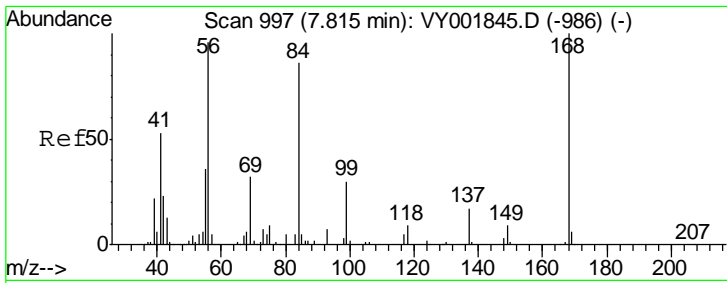
(#) = qualifier out of range (m) = manual integration (+) = signals summed

Data Path : Z:\VOASRV\HPCHEM1\MSVOA Y\DATA\VY031920\
 Data File : VY002016.D
 Acq On : 19 Mar 2020 13:14
 Operator : SY/MD
 Sample : L1978-02
 Misc : 5.01G/5ML/MSVOA Y/SOIL
 ALS Vial : 6 Sample Multiplier: 1

Instrument :
 MSVOA_Y
 Client Sampled :

Quant Time: Mar 20 01:56:03 2020
 Quant Method : Z:\VOASRV\HPCHEM1\MSVOA_Y\METHODS\82Y030420S.M
 Quant Title : SW846 8260
 QLast Update : Thu Mar 05 04:05:33 2020
 Response via : Initial Calibration

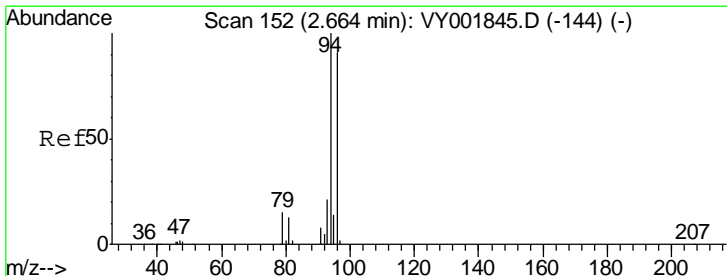
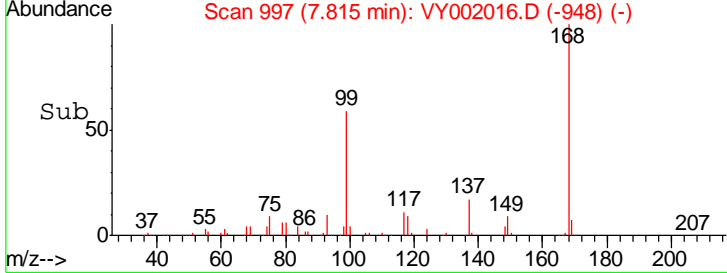
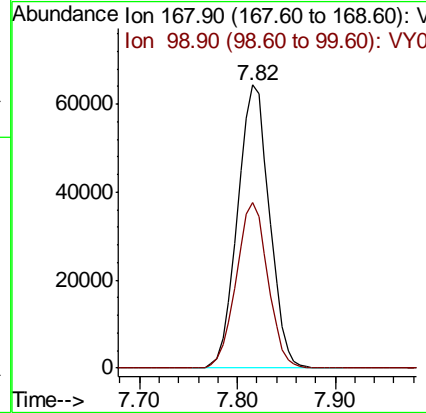
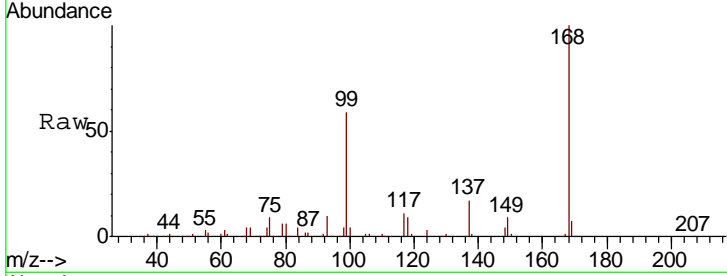




#1
 Pentafluorobenzene
 Concen: 50.000 ug/l
 RT: 7.82 min Scan# 997
 Delta R.T. 0.00 min
 Lab File: VY002016.D
 Acq: 19 Mar 2020 13:14

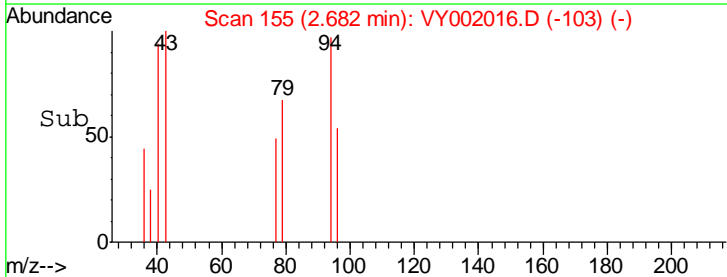
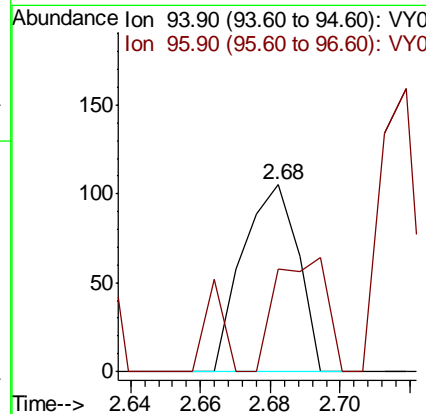
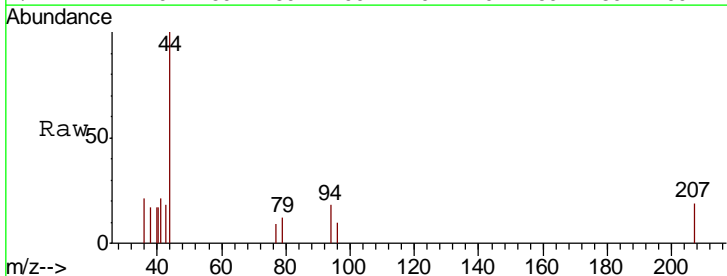
Instrument :
 MSVOA_Y
 ClientSampled :

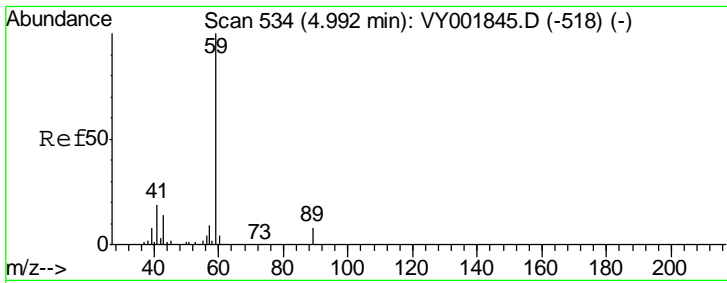
Tgt Ion: 168 Resp: 145449
 Ion Ratio Lower Upper
 168 100
 99 58.6 46.7 70.1



#5
 Bromomethane
 Concen: Below Cal
 RT: 2.68 min Scan# 155
 Delta R.T. 0.02 min
 Lab File: VY002016.D
 Acq: 19 Mar 2020 13:14

Tgt Ion: 94 Resp: 116
 Ion Ratio Lower Upper
 94 100
 96 55.2 73.2 109.8#

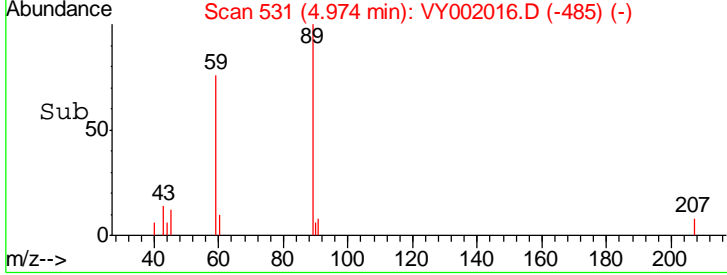
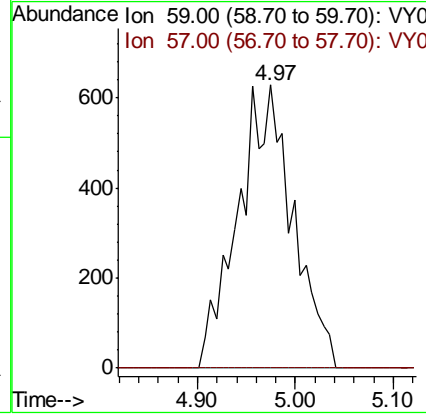
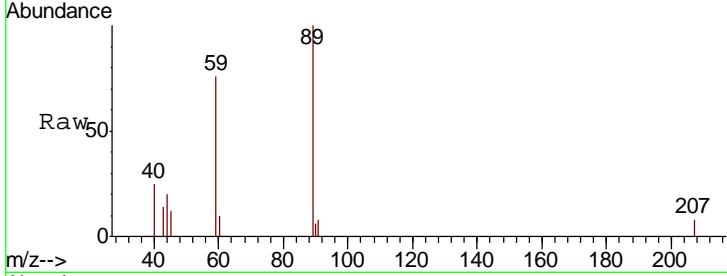




#11
 Tert butyl alcohol
 Concen: Below Cal
 RT: 4.97 min Scan# 531
 Delta R.T. -0.02 min
 Lab File: VY002016.D
 Acq: 19 Mar 2020 13:14

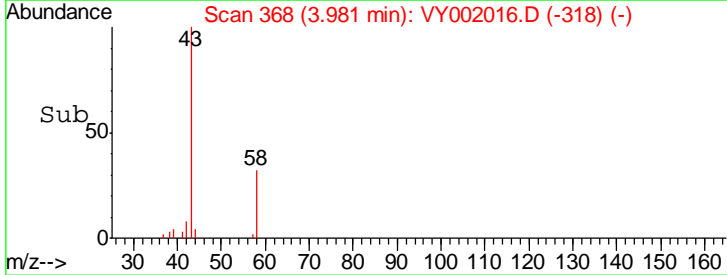
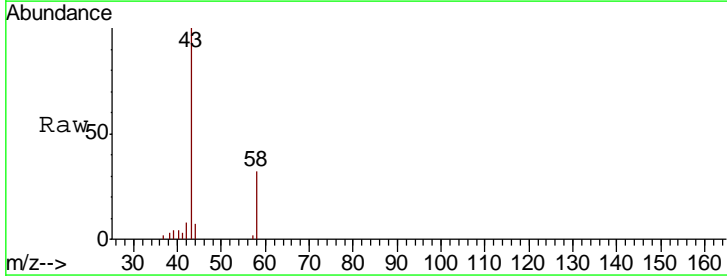
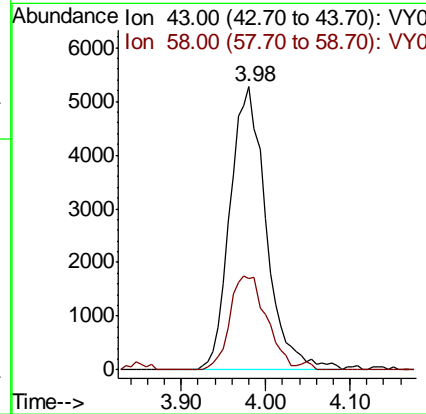
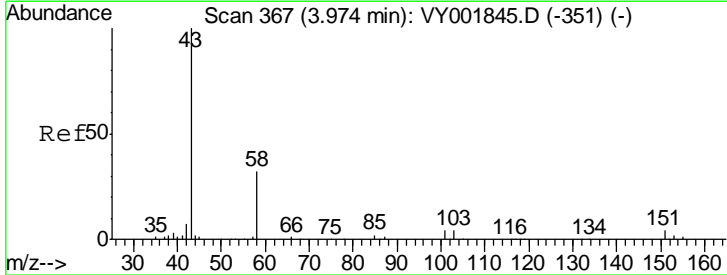
Instrument :
 MSVOA_Y
 ClientSampled :

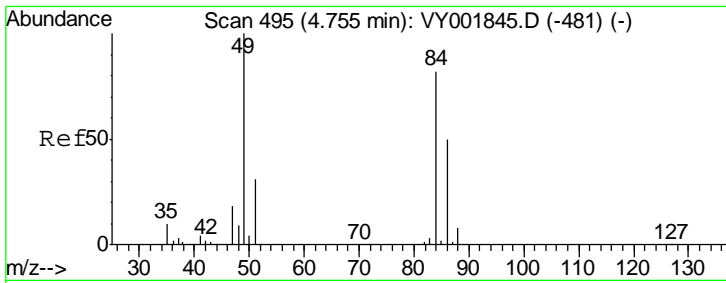
Tgt Ion: 59 Resp: 2439
 Ion Ratio Lower Upper
 59 100
 57 0.0 7.4 11.2#



#16
 Acetone
 Concen: 34.005 ug/l
 RT: 3.98 min Scan# 368
 Delta R.T. 0.01 min
 Lab File: VY002016.D
 Acq: 19 Mar 2020 13:14

Tgt Ion: 43 Resp: 15379
 Ion Ratio Lower Upper
 43 100
 58 32.1 25.9 38.9

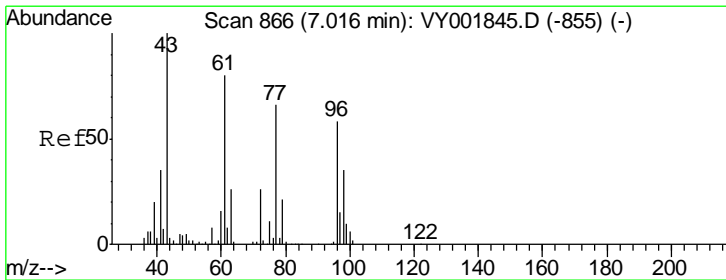
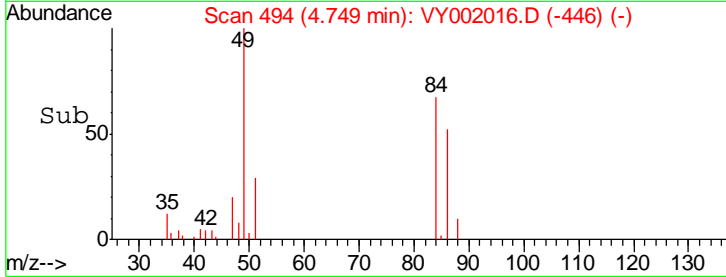
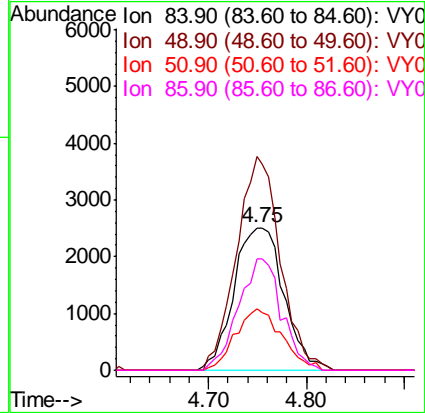
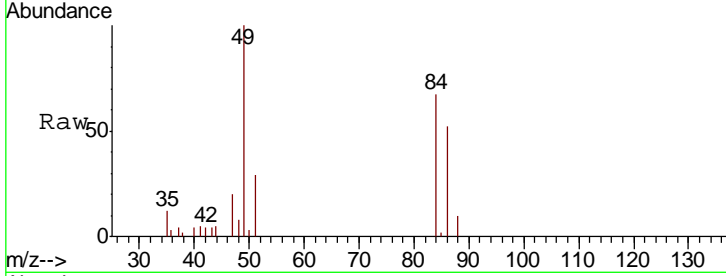




#20
Methylene Chloride
Concen: 4.593 ug/l
RT: 4.75 min Scan# 494
Delta R.T. -0.01 min
Lab File: VY002016.D
Acq: 19 Mar 2020 13:14

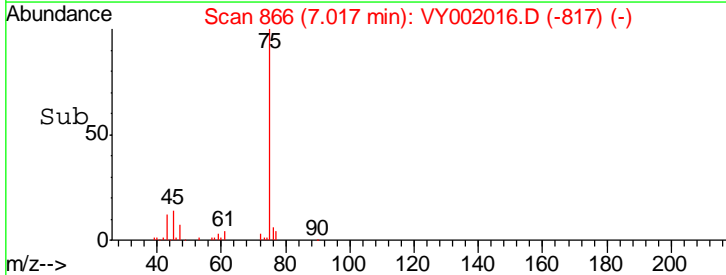
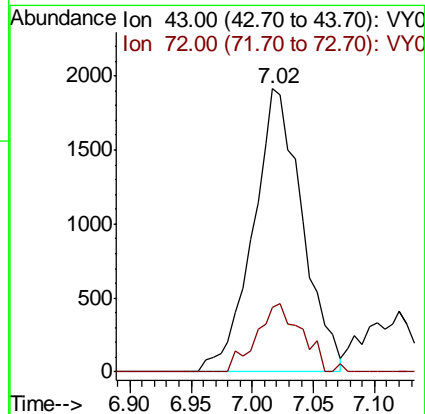
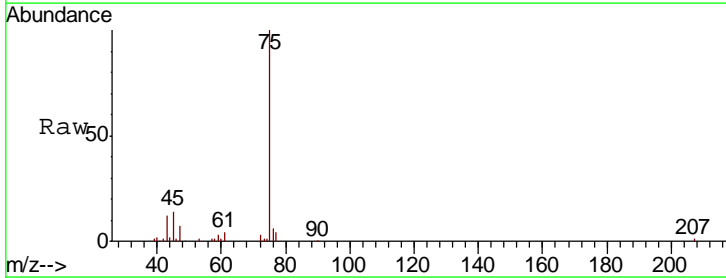
Instrument :
MSVOA_Y
ClientSampled :

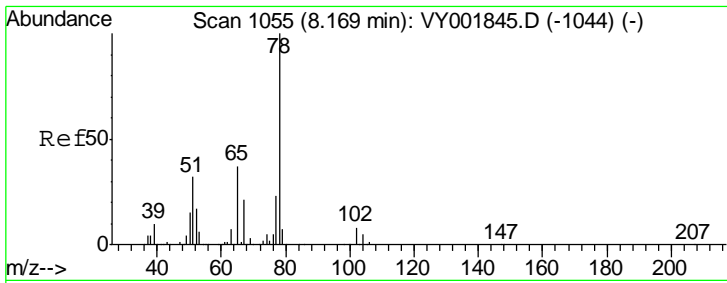
Tgt Ion	Resp	Lower	Upper
84	100		
49	150.1	98.2	147.2#
51	43.3	30.2	45.2
86	78.6	48.9	73.3#



#25
2-Butanone
Concen: 7.788 ug/l
RT: 7.02 min Scan# 866
Delta R.T. 0.00 min
Lab File: VY002016.D
Acq: 19 Mar 2020 13:14

Tgt Ion	Resp	Lower	Upper
43	100		
72	22.9	20.9	31.3

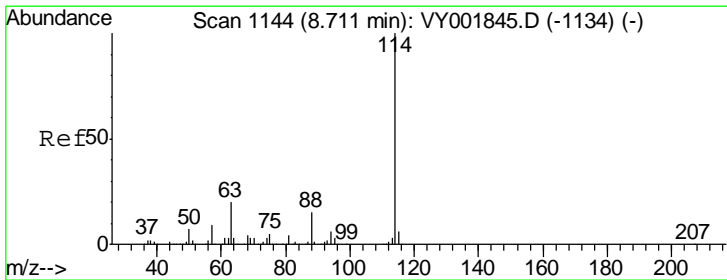
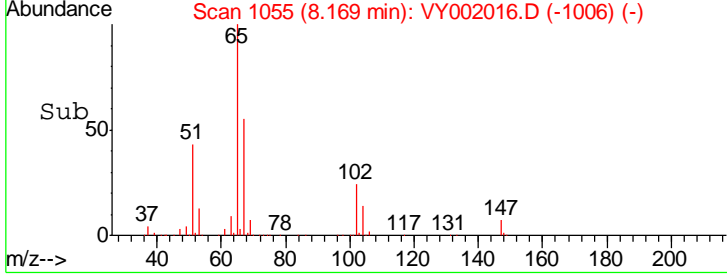
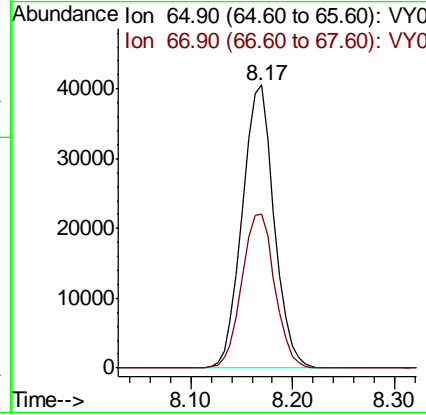
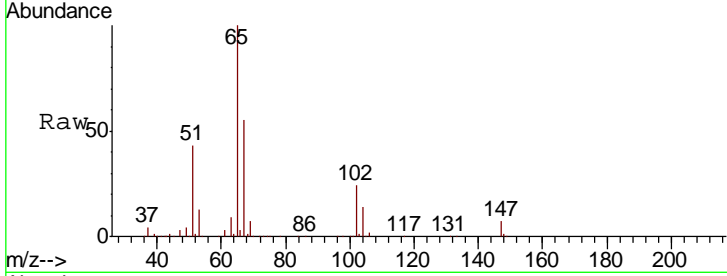




#33
 1,2-Dichloroethane-d4
 Concen: 56.643 ug/l
 RT: 8.17 min Scan# 1055
 Delta R.T. 0.00 min
 Lab File: VY002016.D
 Acq: 19 Mar 2020 13:14

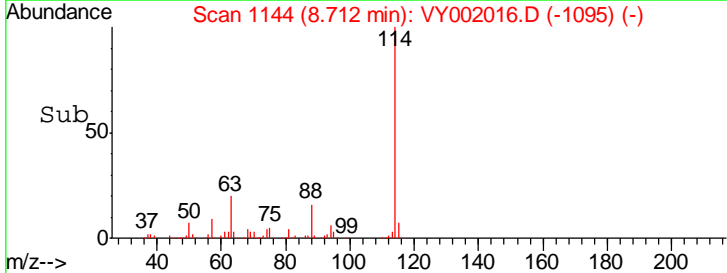
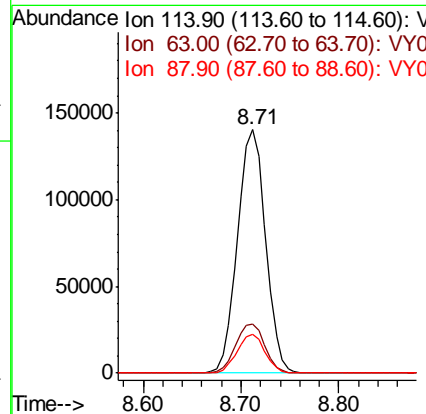
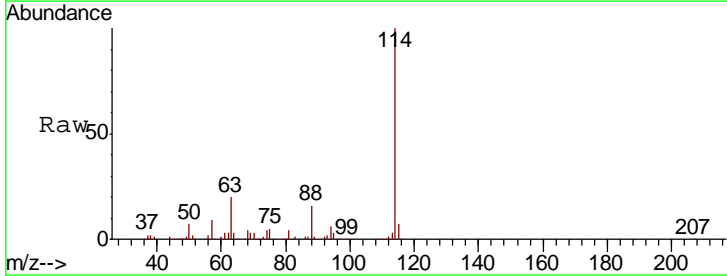
Instrument :
 MSVOA_Y
 ClientSampled :

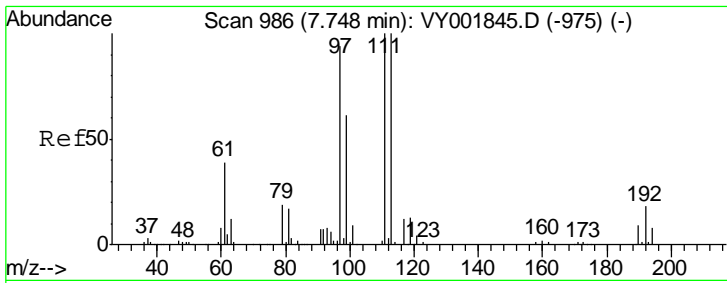
Tgt Ion	Resp	Lower	Upper
65	100		
67	56.5	0.0	110.8



#34
 1,4-Difluorobenzene
 Concen: 50.000 ug/l
 RT: 8.71 min Scan# 1144
 Delta R.T. 0.00 min
 Lab File: VY002016.D
 Acq: 19 Mar 2020 13:14

Tgt Ion	Resp	Lower	Upper
114	100		
63	20.2	0.0	39.4
88	15.8	0.0	30.4

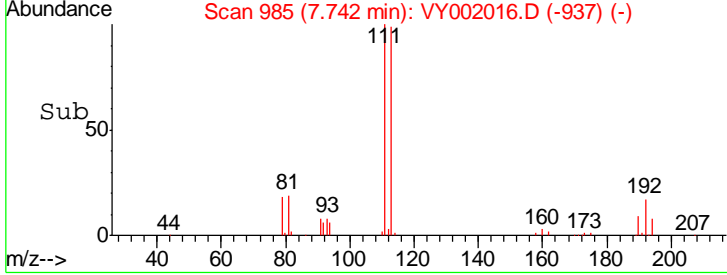
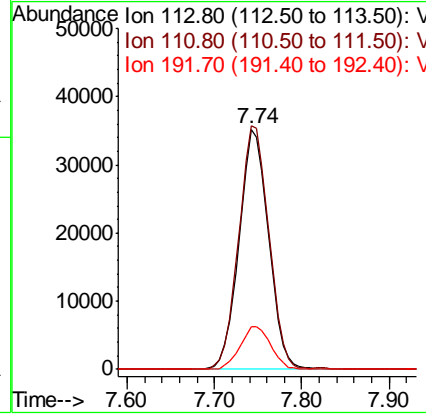
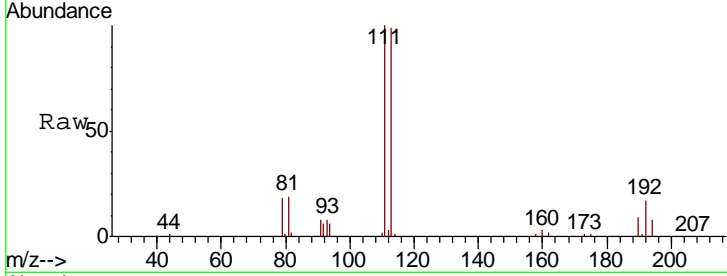




#35
 Dibromofluoromethane
 Concen: 54.009 ug/l
 RT: 7.74 min Scan# 985
 Delta R.T. -0.01 min
 Lab File: VY002016.D
 Acq: 19 Mar 2020 13:14

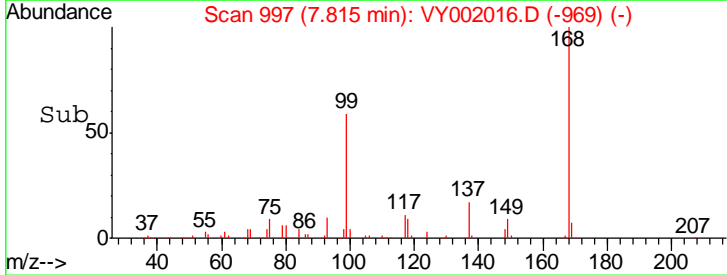
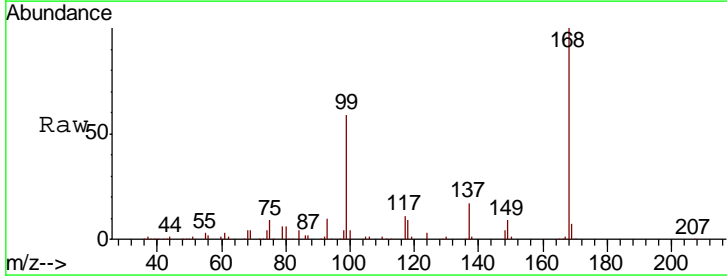
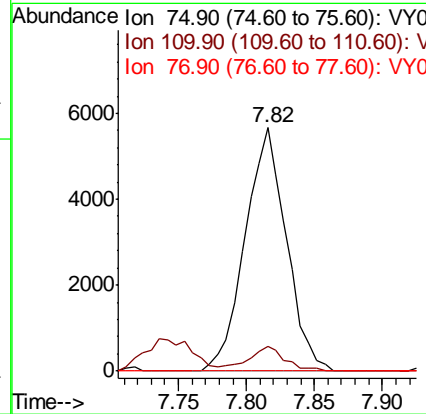
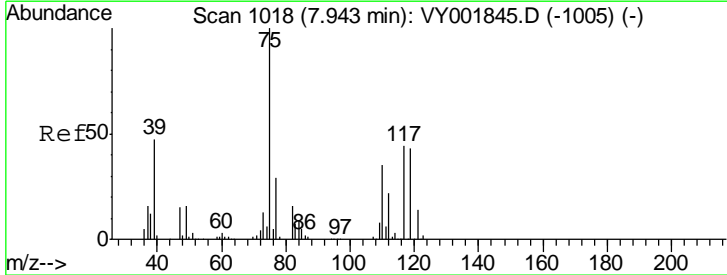
Instrument :
 MSVOA_Y
 ClientSampled :

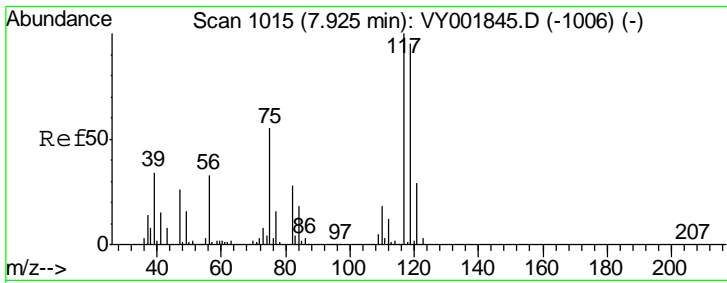
Tgt Ion	Resp	Lower	Upper
113	100		
111	103.5	81.8	122.8
192	18.2	14.2	21.2



#36
 1,1-Dichloropropene
 Concen: 4.448 ug/l
 RT: 7.82 min Scan# 997
 Delta R.T. -0.13 min
 Lab File: VY002016.D
 Acq: 19 Mar 2020 13:14

Tgt Ion	Resp	Lower	Upper
75	100		
110	9.0	17.4	52.2#
77	0.0	24.2	36.2#

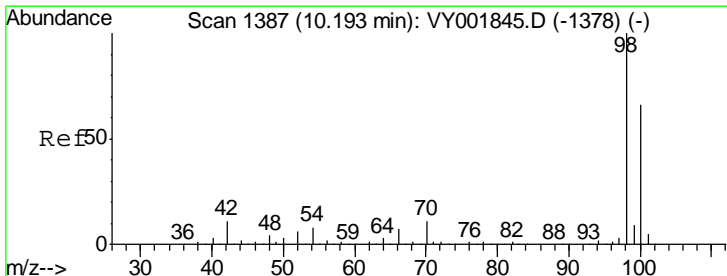
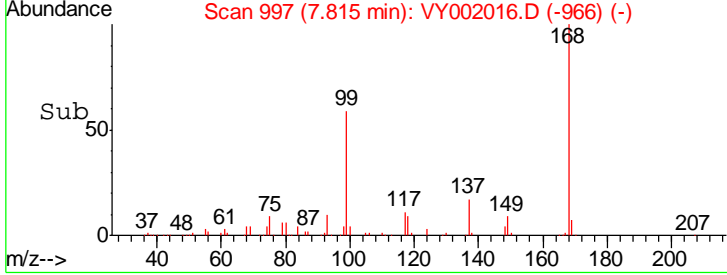
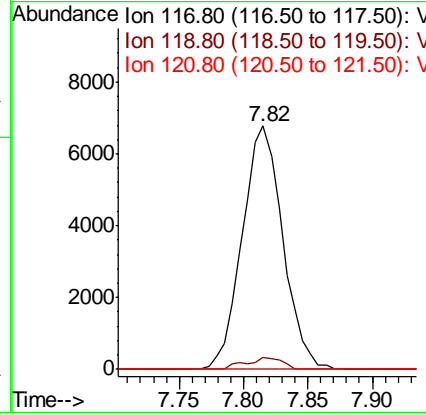
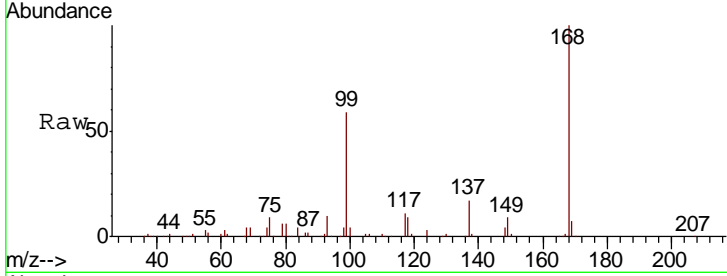




#38
 Carbon Tetrachloride
 Concen: 6.404 ug/l
 RT: 7.82 min Scan# 997
 Delta R.T. -0.11 min
 Lab File: VY002016.D
 Acq: 19 Mar 2020 13:14

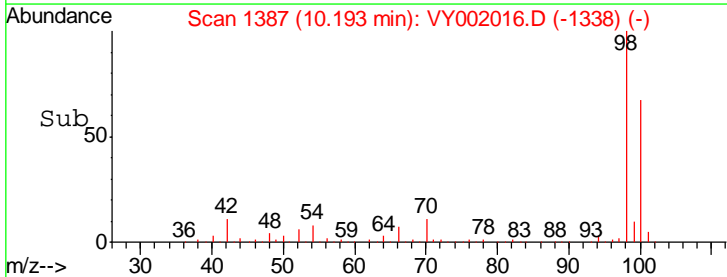
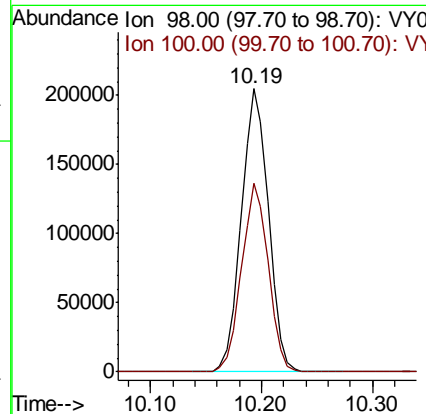
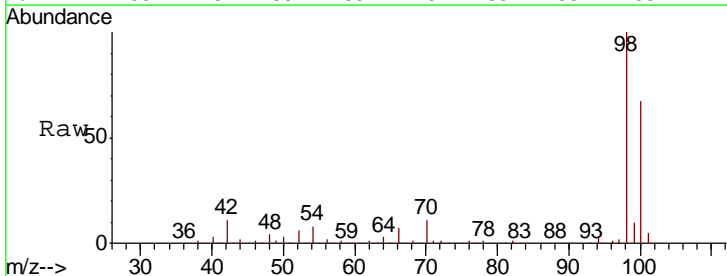
Instrument :
 MSVOA_Y
 ClientSampled :

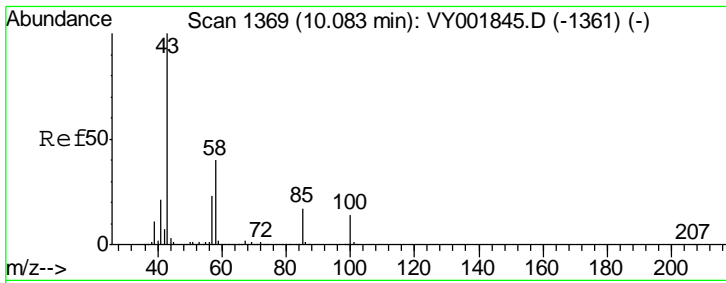
Tgt Ion	Resp	Lower	Upper
117	14755		
119	5.1	76.3	114.5#
121	0.0	23.5	35.3#



#50
 Toluene-d8
 Concen: 53.288 ug/l
 RT: 10.19 min Scan# 1387
 Delta R.T. 0.00 min
 Lab File: VY002016.D
 Acq: 19 Mar 2020 13:14

Tgt Ion	Resp	Lower	Upper
98	343899		
100	65.7	53.0	79.4

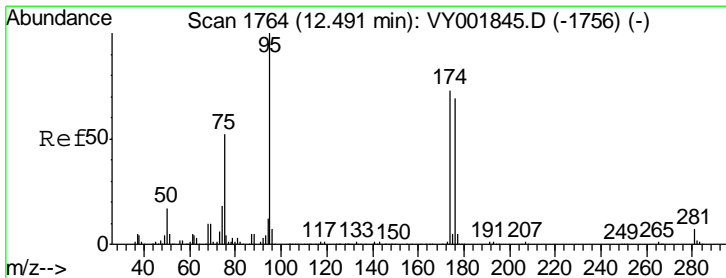
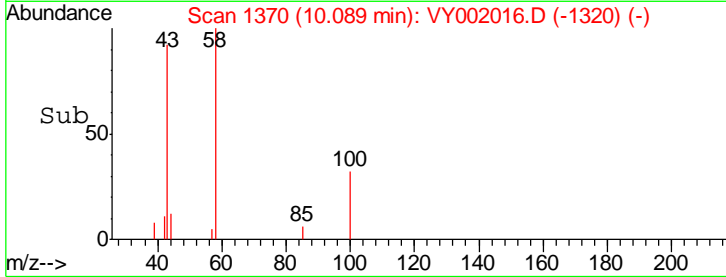
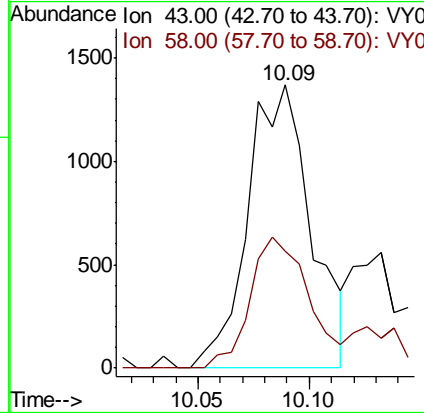
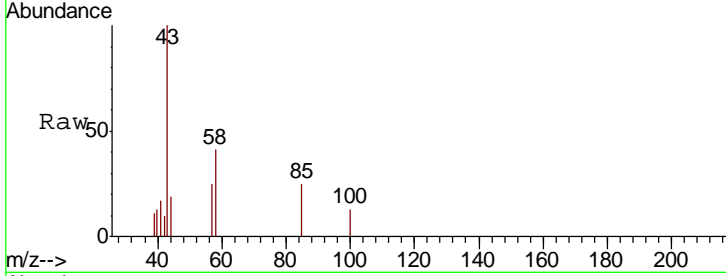




#51
 4-Methyl-2-Pentanone
 Concen: 1.777 ug/l
 RT: 10.09 min Scan# 1370
 Delta R.T. 0.01 min
 Lab File: VY002016.D
 Acq: 19 Mar 2020 13:14

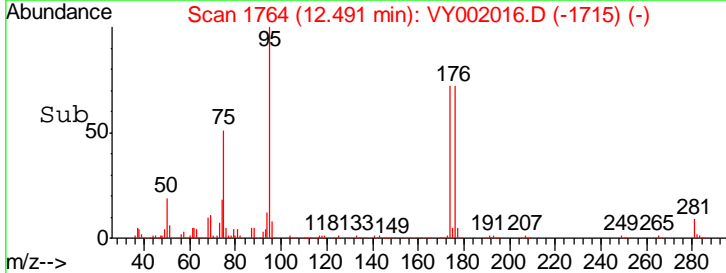
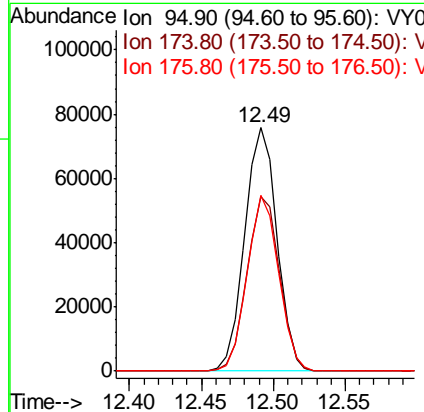
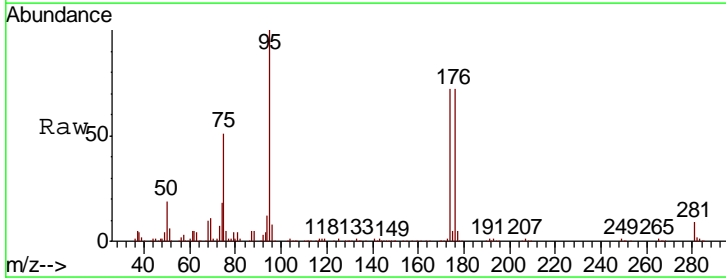
Instrument :
 MSVOA_Y
 ClientSampled :

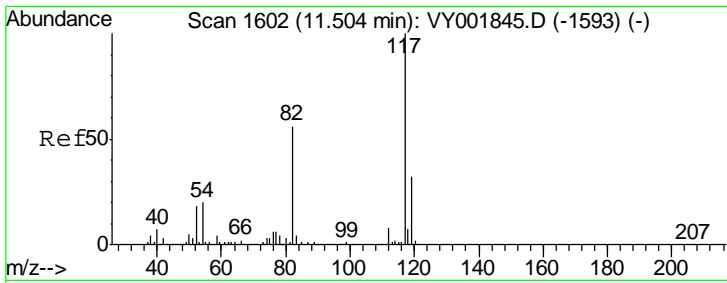
Tgt Ion	Resp	Lower	Upper
43	100		
58	42.7	32.0	48.0



#62
 4-Bromofluorobenzene
 Concen: 52.157 ug/l
 RT: 12.49 min Scan# 1764
 Delta R.T. 0.00 min
 Lab File: VY002016.D
 Acq: 19 Mar 2020 13:14

Tgt Ion	Resp	Lower	Upper
95	100		
174	72.4	0.0	145.0
176	70.7	0.0	137.4

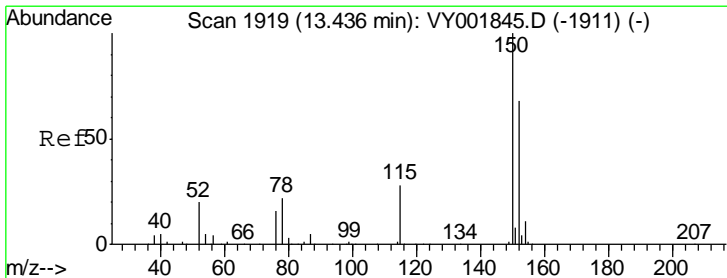
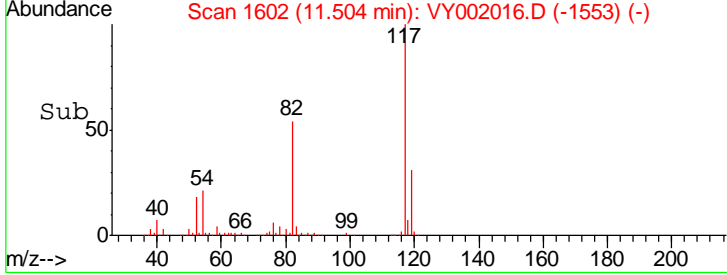
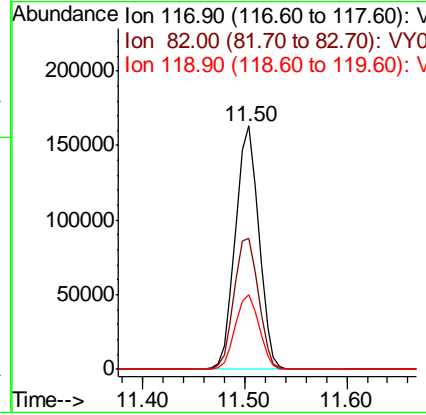
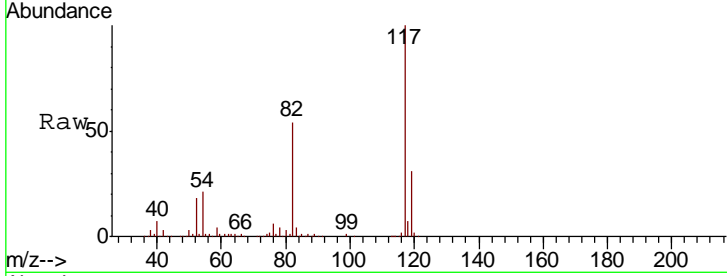




#63
 Chlorobenzene-d5
 Concen: 50.000 ug/l
 RT: 11.50 min Scan# 1602
 Delta R.T. 0.00 min
 Lab File: VY002016.D
 Acq: 19 Mar 2020 13:14

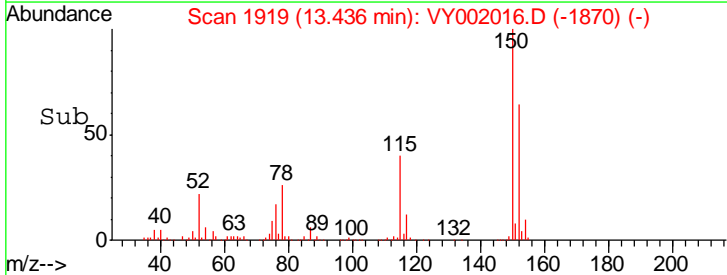
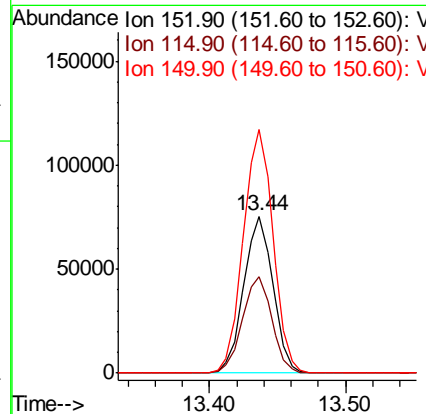
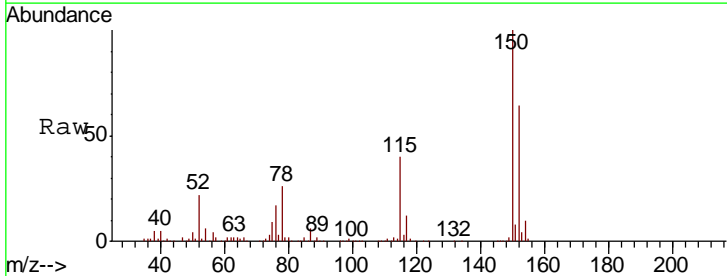
Instrument :
 MSVOA_Y
 ClientSampled :

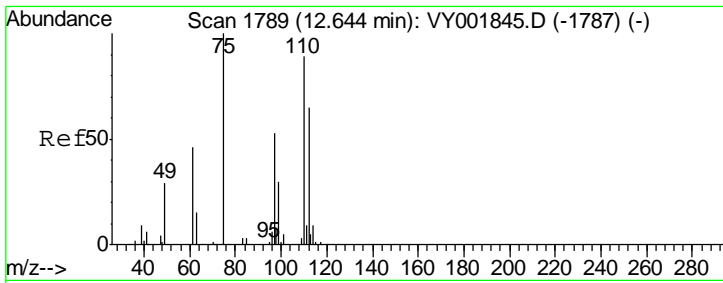
Tgt Ion	Resp	Lower	Upper
117	100		
82	53.8	44.5	66.7
119	30.7	25.7	38.5



#72
 1,4-Dichlorobenzene-d4
 Concen: 50.000 ug/l
 RT: 13.44 min Scan# 1919
 Delta R.T. 0.00 min
 Lab File: VY002016.D
 Acq: 19 Mar 2020 13:14

Tgt Ion	Resp	Lower	Upper
152	100		
115	61.9	29.9	89.7
150	158.0	0.0	340.6

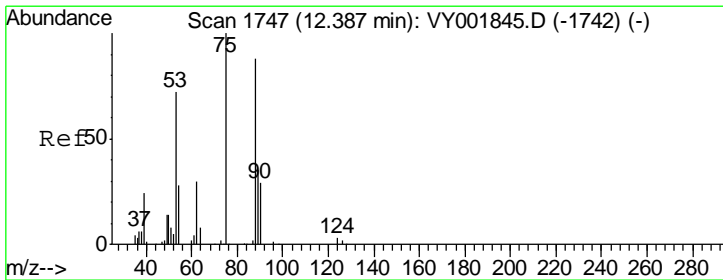
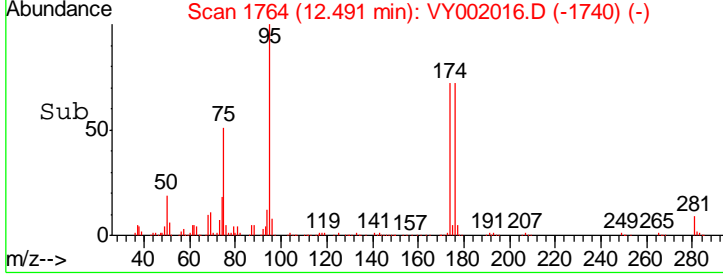
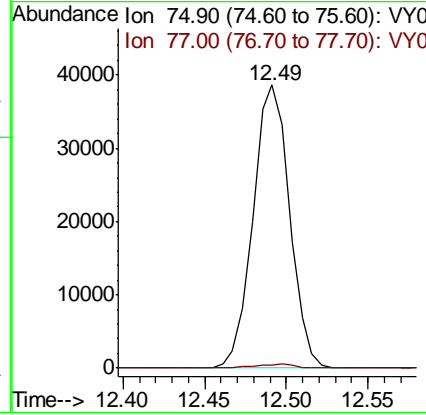
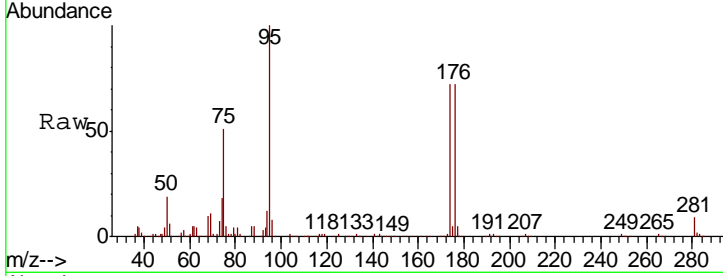




#76
 1,2,3-Trichloropropane
 Concen: 44.811 ug/l
 RT: 12.49 min Scan# 1764
 Delta R.T. -0.15 min
 Lab File: VY002016.D
 Acq: 19 Mar 2020 13:14

Instrument :
 MSVOA_Y
 ClientSampled :

Tgt Ion	Resp	Lower	Upper
75	100		
77	1.5	0.0	0.0#



#81
 trans-1,4-Dichloro-2-butene
 Concen: 90.517 ug/l
 RT: 12.49 min Scan# 1764
 Delta R.T. 0.10 min
 Lab File: VY002016.D
 Acq: 19 Mar 2020 13:14

Tgt Ion	Resp	Lower	Upper
75	100		
53	0.0	65.4	98.0#
89	0.1	36.0	54.0#

