

Data Path : Z:\voasrv\HPCHEM1\MSVOA_Y\Data\VY032023\
 Data File : VY013006.D
 Acq On : 20 Mar 2023 14:30
 Operator : KP/MD
 Sample : 02012-01
 Misc : 7.33g/5.0mL/MSVOA_Y/SOIL
 ALS Vial : 7 Sample Multiplier: 1

Instrument :
 MSVOA_Y
 ClientSampleId :
 B-23-SB01

Integration Parameters: RTEINT.P

Integrator: RTE
 Smoothing : ON Filtering: 5
 Sampling : 1 Min Area: 3 % of largest Peak
 Start Thrs: 0.2 Max Peaks: 100
 Stop Thrs : 0 Peak Location: TOP

If leading or trailing edge < 100 prefer < Baseline drop else tangent >
 Peak separation: 5

Method : Z:\voasrv\HPCHEM1\MSVOA_Y\methods\82Y030223S.M
 Title : SW846 8260

Signal : TIC: VY013006.D\data.ms

| peak # | R.T. min | first scan | max scan | last scan | PK TY | peak height | corr. area | corr. % max. | % of total |
|--------|----------|------------|----------|-----------|-------|-------------|------------|--------------|------------|
| 1 | 4.716 | 466 | 475 | 490 | rVB2 | 9306 | 29038 | 6.40% | 1.206% |
| 2 | 7.716 | 955 | 967 | 973 | rBV | 68346 | 165408 | 36.45% | 6.870% |
| 3 | 7.789 | 973 | 979 | 993 | rVB | 106119 | 244903 | 53.97% | 10.172% |
| 4 | 8.143 | 1028 | 1037 | 1046 | rBV | 71534 | 159201 | 35.08% | 6.612% |
| 5 | 8.691 | 1117 | 1127 | 1136 | rBV | 169517 | 334446 | 73.71% | 13.891% |
| 6 | 10.179 | 1363 | 1371 | 1382 | rBV | 264750 | 453760 | 100.00% | 18.846% |
| 7 | 11.490 | 1579 | 1586 | 1599 | rBV | 240773 | 391347 | 86.25% | 16.254% |
| 8 | 12.337 | 1719 | 1725 | 1731 | rBV3 | 4402 | 6785 | 1.50% | 0.282% |
| 9 | 12.483 | 1742 | 1749 | 1758 | rBV | 177321 | 277869 | 61.24% | 11.541% |
| 10 | 13.428 | 1898 | 1904 | 1912 | rVB | 220458 | 339957 | 74.92% | 14.120% |
| 11 | 13.965 | 1985 | 1992 | 1998 | rBV2 | 2960 | 4963 | 1.09% | 0.206% |

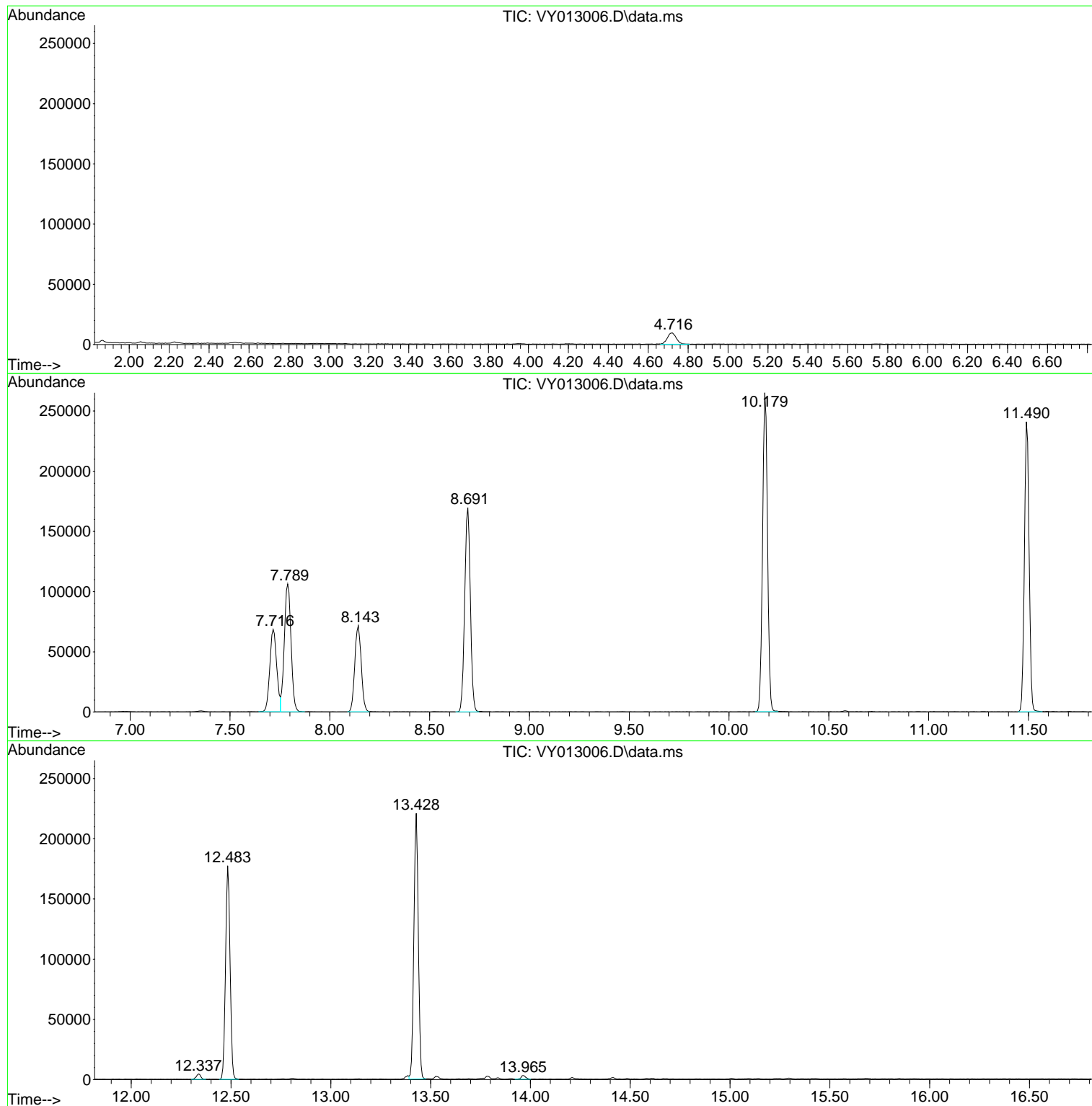
Sum of corrected areas: 2407677

Data Path : Z:\voasrv\HPCHEM1\MSVOA_Y\Data\VY032023\
Data File : VY013006.D
Acq On : 20 Mar 2023 14:30
Operator : KP/MD
Sample : 02012-01
Misc : 7.33g/5.0mL/MSVOA_Y/SOIL
ALS Vial : 7 Sample Multiplier: 1

Instrument :
MSVOA_Y
ClientSampleId :
B-23-SB01

Quant Method : Z:\voasrv\HPCHEM1\MSVOA_Y\methods\82Y030223S.M
Quant Title : SW846 8260

TIC Library : C:\Database\NIST20.L
TIC Integration Parameters: LSCINT.P



Library Search Compound Report

Data Path : Z:\voasrv\HPCHEM1\MSVOA_Y\Data\VY032023\
Data File : VY013006.D
Acq On : 20 Mar 2023 14:30
Operator : KP/MD
Sample : 02012-01
Misc : 7.33g/5.0mL/MSVOA_Y/SOIL
ALS Vial : 7 Sample Multiplier: 1

Instrument :
MSVOA_Y
ClientSampleId :
B-23-SB01

Quant Method : Z:\voasrv\HPCHEM1\MSVOA_Y\methods\82Y030223S.M
Quant Title : SW846 8260

TIC Library : C:\Database\NIST20.L
TIC Integration Parameters: LSCINT.P

No Library Search Compounds Detected

Data Path : Z:\voasrv\HPCHEM1\MSVOA_Y\Data\VY032023\
Data File : VY013006.D
Acq On : 20 Mar 2023 14:30
Operator : KP/MD
Sample : 02012-01
Misc : 7.33g/5.0mL/MSVOA_Y/SOIL
ALS Vial : 7 Sample Multiplier: 1

Instrument :
MSVOA_Y
ClientSampleId :
B-23-SB01

Quant Method : Z:\voasrv\HPCHEM1\MSVOA_Y\methods\82Y030223S.M
Quant Title : SW846 8260

TIC Library : C:\Database\NIST0.L
TIC Integration Parameters: LSCINT.P

| TIC Top Hit name | RT | EstConc | Units | Response | # | RT | Resp | Conc |
|------------------|----|---------|-------|----------|---|----|------|------|
|------------------|----|---------|-------|----------|---|----|------|------|
