

Data Path : Z:\voasrv\HPCHEM1\MSVOA\_Y\Data\VY032123\  
 Data File : VY013032.D  
 Acq On : 21 Mar 2023 17:09  
 Operator : KP/MD  
 Sample : 02020-01RE  
 Misc : 5.02g/5.0mL/MSVOA\_Y/SOIL  
 ALS Vial : 16 Sample Multiplier: 1

Instrument :  
 MSVOA\_Y  
 ClientSampleId :  
 SP-1RE

Quant Time: Mar 22 04:22:36 2023  
 Quant Method : Z:\voasrv\HPCHEM1\MSVOA\_Y\methods\82Y030223S.M  
 Quant Title : SW846 8260  
 QLast Update : Fri Mar 03 01:13:13 2023  
 Response via : Initial Calibration

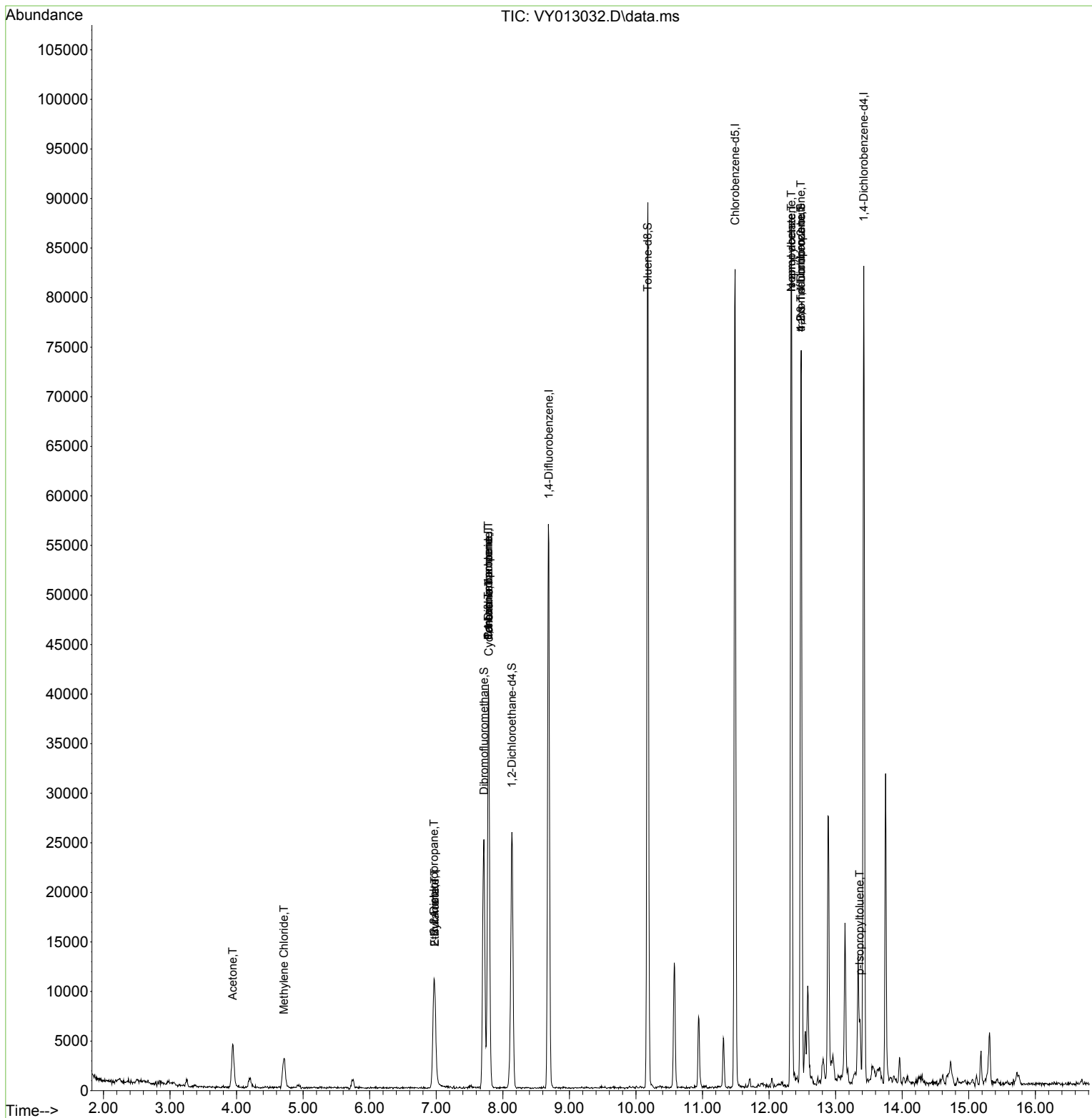
Compound	R.T.	QIon	Response	Conc	Units	Dev(Min)
-----						
Internal Standards						
1) Pentafluorobenzene	7.783	168	30703	50.000	ug/l	0.00
34) 1,4-Difluorobenzene	8.691	114	48102	50.000	ug/l	0.00
63) Chlorobenzene-d5	11.489	117	45289	50.000	ug/l	0.00
72) 1,4-Dichlorobenzene-d4	13.422	152	20590	50.000	ug/l	0.00
System Monitoring Compounds						
33) 1,2-Dichloroethane-d4	8.136	65	19119	62.718	ug/l	0.00
Spiked Amount	50.000	Range 50 - 163	Recovery	=	125.440%	
35) Dibromofluoromethane	7.716	113	17551	60.459	ug/l	0.00
Spiked Amount	50.000	Range 54 - 147	Recovery	=	120.920%	
50) Toluene-d8	10.179	98	58933	55.531	ug/l	0.00
Spiked Amount	50.000	Range 49 - 140	Recovery	=	111.060%	
62) 4-Bromofluorobenzene	12.477	95	19247	53.732	ug/l	0.00
Spiked Amount	50.000	Range 25 - 144	Recovery	=	107.460%	
Target Compounds						
						Qvalue
11) Tert butyl alcohol	4.936	59	212	Below Cal	#	74
16) Acetone	3.942	43	7681	64.194	ug/l	89
20) Methylene Chloride	4.710	84	2305	1.053	ug/l	94
25) 2-Butanone	6.978	43	659	4.447	ug/l	# 49
26) 2,2-Dichloropropane	6.966	77	950	1.770	ug/l	# 52
31) Cyclohexane	7.789	56	684	1.172	ug/l	# 19
36) 1,1-Dichloropropene	7.783	75	2568	5.279	ug/l	# 45
37) Ethyl Acetate	6.978	43	659	2.149	ug/l	# 1
38) Carbon Tetrachloride	7.783	117	2843	5.659	ug/l	# 19
73) Isopropylbenzene	12.337	105	3955	2.710	ug/l	# 68
74) N-amyl acetate	12.337	43	2085	4.541	ug/l	# 18
76) 1,2,3-Trichloropropane	12.477	75	10503	42.716	ug/l	# 100
81) trans-1,4-Dichloro-2-b...	12.477	75	10503	88.510	ug/l	# 13
86) p-Isopropyltoluene	13.361	119	3295	2.543	ug/l	# 74
-----						

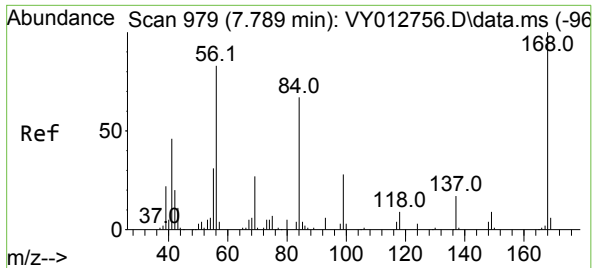
(#) = qualifier out of range (m) = manual integration (+) = signals summed

Data Path : Z:\voasrv\HPCHEM1\MSVOA\_Y\Data\VY032123\  
 Data File : VY013032.D  
 Acq On : 21 Mar 2023 17:09  
 Operator : KP/MD  
 Sample : 02020-01RE  
 Misc : 5.02g/5.0mL/MSVOA\_Y/SOIL  
 ALS Vial : 16 Sample Multiplier: 1

Instrument :  
 MSVOA\_Y  
 ClientSampleId :  
 SP-1RE

Quant Time: Mar 22 04:22:36 2023  
 Quant Method : Z:\voasrv\HPCHEM1\MSVOA\_Y\methods\82Y030223S.M  
 Quant Title : SW846 8260  
 QLast Update : Fri Mar 03 01:13:13 2023  
 Response via : Initial Calibration

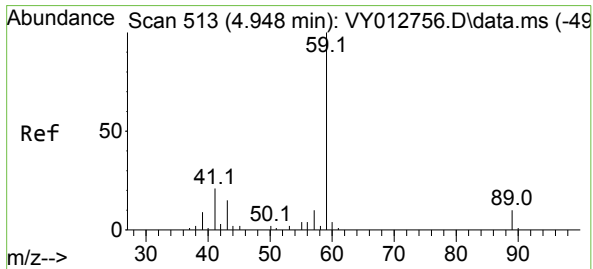
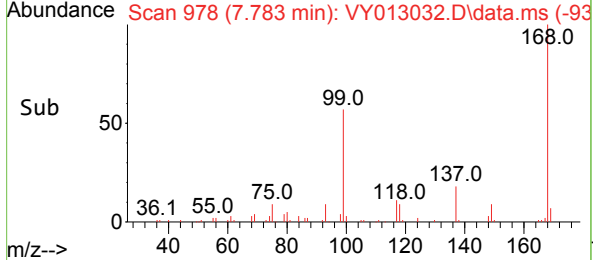
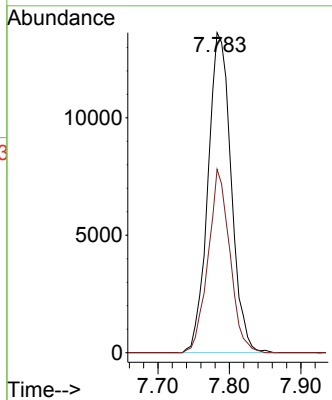
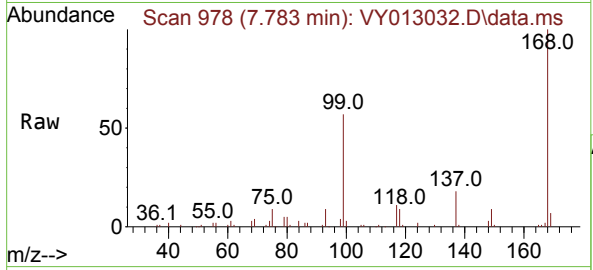




#1  
 Pentafluorobenzene  
 Concen: 50.000 ug/l  
 RT: 7.783 min Scan# 91  
 Delta R.T. -0.006 min  
 Lab File: VY013032.D  
 Acq: 21 Mar 2023 17:09

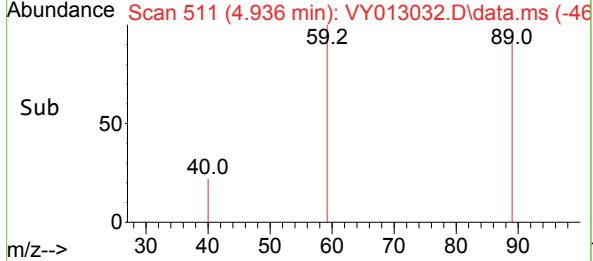
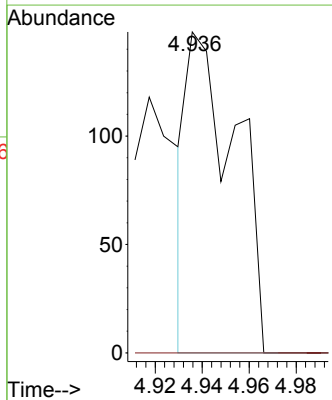
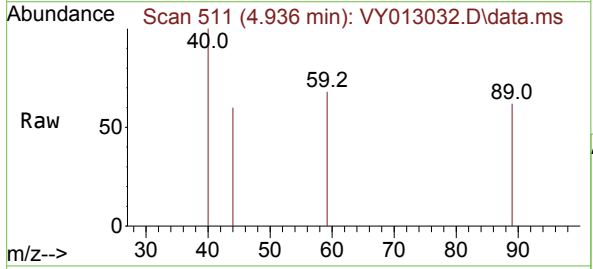
Instrument : MSVOA\_Y  
 Client Sample Id : SP-1RE

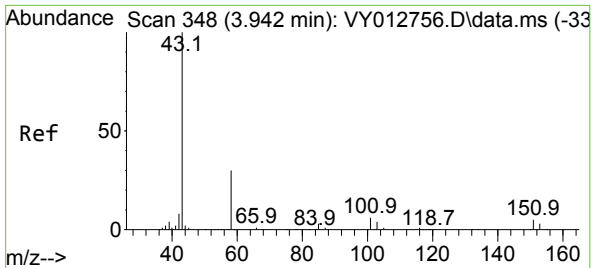
Tgt Ion:168 Resp: 30703  
 Ion Ratio Lower Upper  
 168 100  
 99 57.3 41.7 62.5



#11  
 Tert butyl alcohol  
 Concen: Below Cal  
 RT: 4.936 min Scan# 511  
 Delta R.T. -0.012 min  
 Lab File: VY013032.D  
 Acq: 21 Mar 2023 17:09

Tgt Ion: 59 Resp: 212  
 Ion Ratio Lower Upper  
 59 100  
 57 0.0 7.7 11.5#



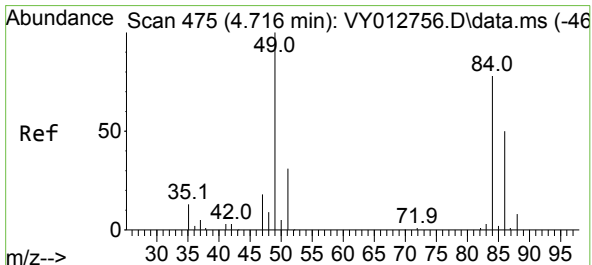
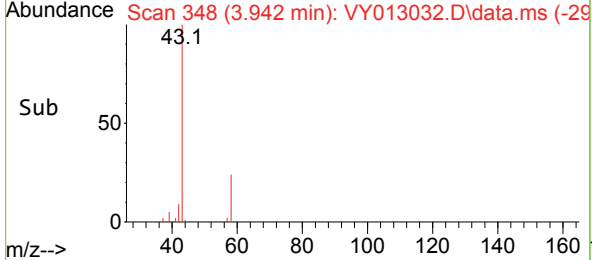
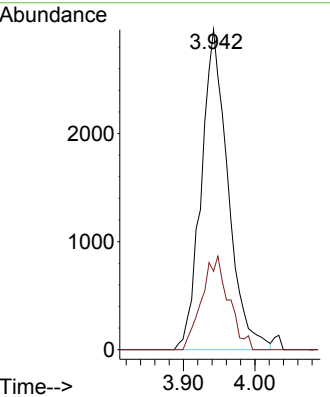
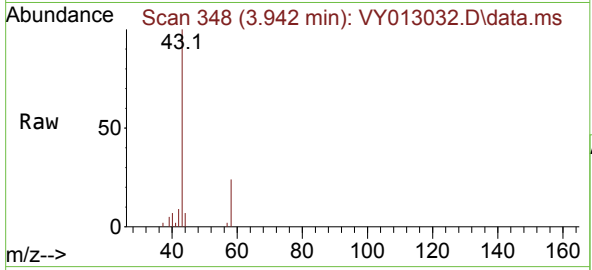


#16  
 Acetone  
 Concen: 64.194 ug/l  
 RT: 3.942 min Scan# 34  
 Delta R.T. 0.000 min  
 Lab File: VY013032.D  
 Acq: 21 Mar 2023 17:09

Instrument : MSVOA\_Y  
 ClientSampleId : SP-1RE

Tgt Ion: 43 Resp: 7681

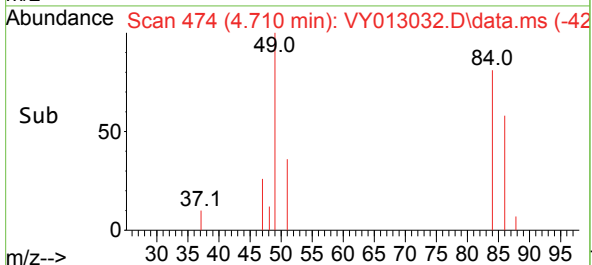
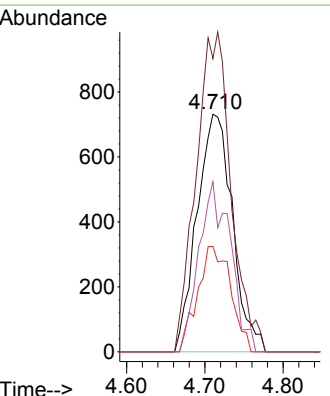
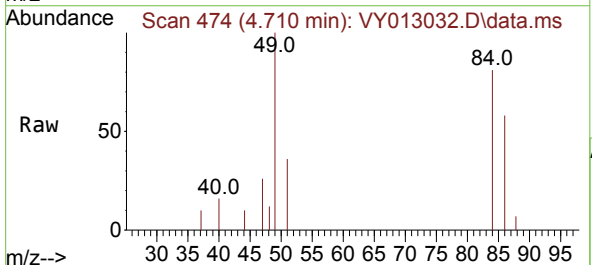
Ion	Ratio	Lower	Upper
43	100		
58	24.5	24.2	36.2

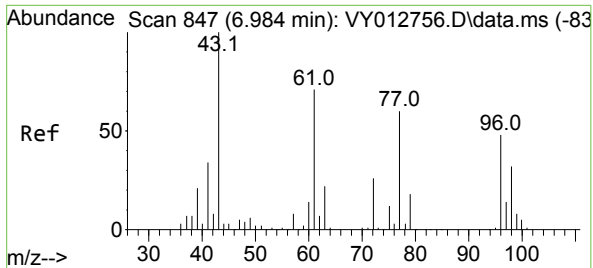


#20  
 Methylene Chloride  
 Concen: 1.053 ug/l  
 RT: 4.710 min Scan# 474  
 Delta R.T. -0.006 min  
 Lab File: VY013032.D  
 Acq: 21 Mar 2023 17:09

Tgt Ion: 84 Resp: 2305

Ion	Ratio	Lower	Upper
84	100		
49	123.4	102.6	154.0
51	44.4	31.9	47.9
86	71.6	51.0	76.6

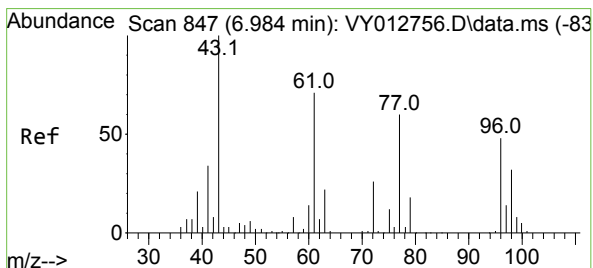
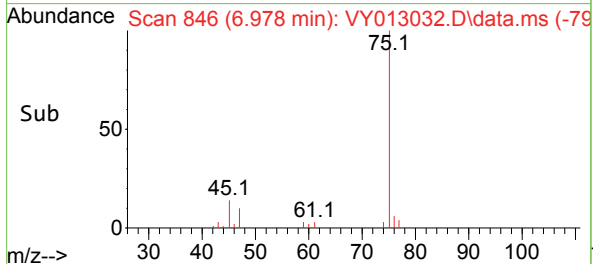
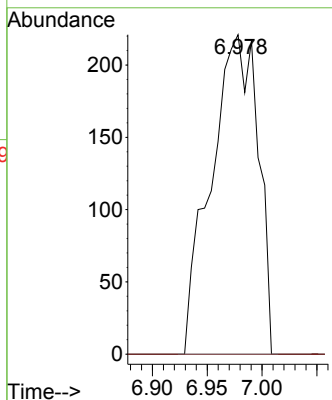
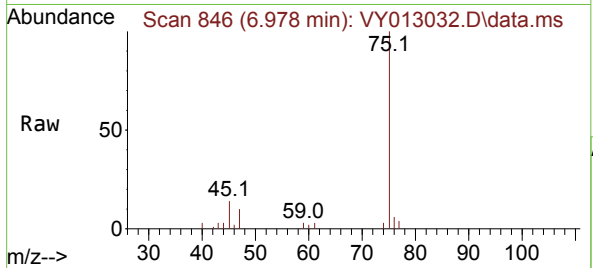




#25  
 2-Butanone  
 Concen: 4.447 ug/l  
 RT: 6.978 min Scan# 844  
 Delta R.T. -0.006 min  
 Lab File: VY013032.D  
 Acq: 21 Mar 2023 17:09

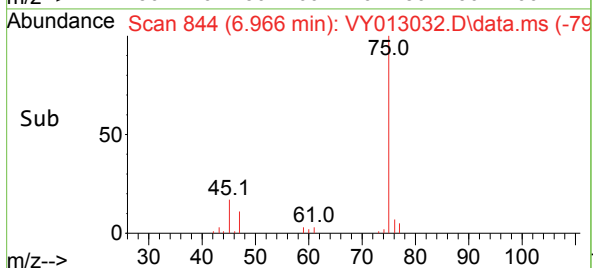
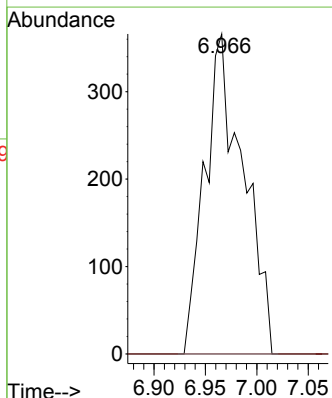
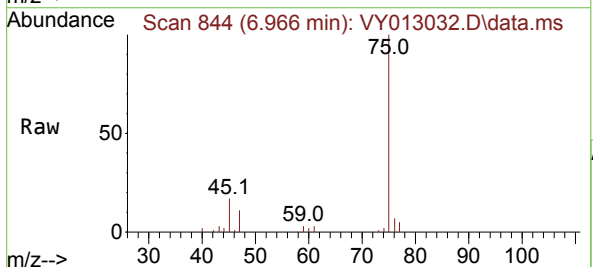
Instrument : MSVOA\_Y  
 ClientSampleId : SP-1RE

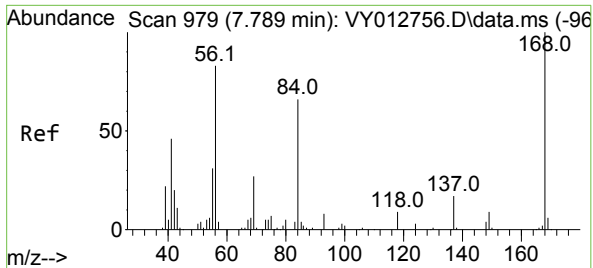
Tgt Ion: 43 Resp: 659  
 Ion Ratio Lower Upper  
 43 100  
 72 0.0 21.0 31.4#



#26  
 2,2-Dichloropropane  
 Concen: 1.770 ug/l  
 RT: 6.966 min Scan# 844  
 Delta R.T. -0.018 min  
 Lab File: VY013032.D  
 Acq: 21 Mar 2023 17:09

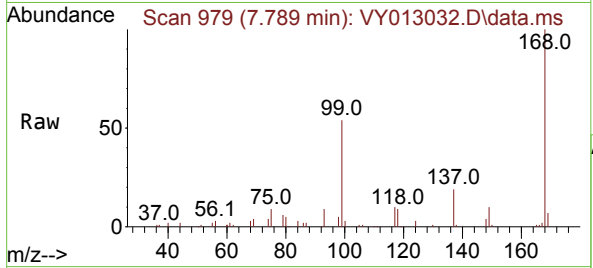
Tgt Ion: 77 Resp: 950  
 Ion Ratio Lower Upper  
 77 100  
 97 0.0 11.7 35.0#



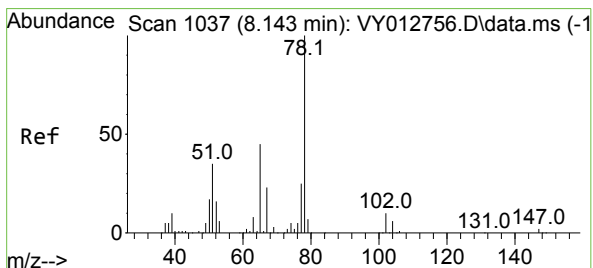
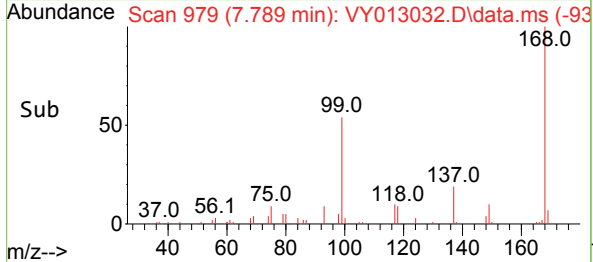
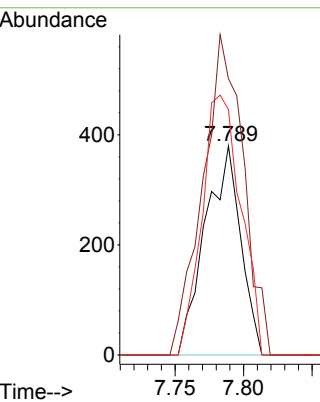


#31  
 Cyclohexane  
 Concen: 1.172 ug/l  
 RT: 7.789 min Scan# 91  
 Delta R.T. -0.000 min  
 Lab File: VY013032.D  
 Acq: 21 Mar 2023 17:09

Instrument :  
 MSVOA\_Y  
 ClientSampleId :  
 SP-1RE

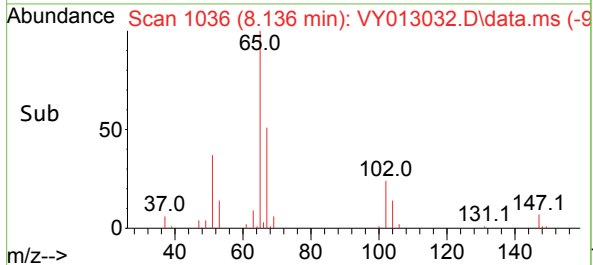
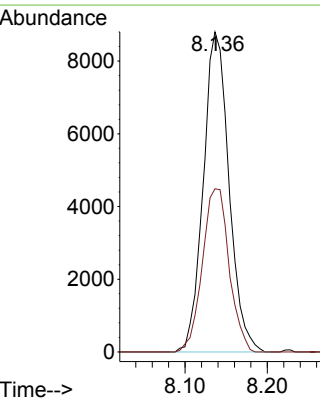
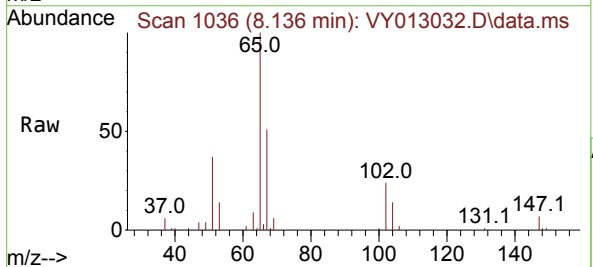


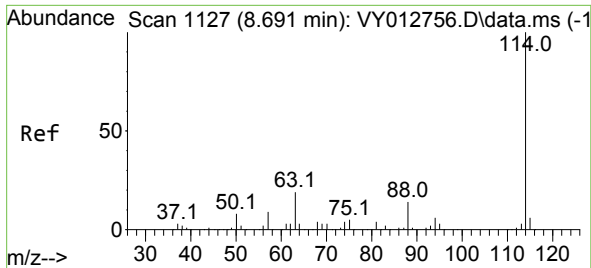
Tgt Ion: 56 Resp: 684  
 Ion Ratio Lower Upper  
 56 100  
 69 132.1 25.7 38.5#  
 84 117.4 64.3 96.5#



#33  
 1,2-Dichloroethane-d4  
 Concen: 62.718 ug/l  
 RT: 8.136 min Scan# 1036  
 Delta R.T. -0.007 min  
 Lab File: VY013032.D  
 Acq: 21 Mar 2023 17:09

Tgt Ion: 65 Resp: 19119  
 Ion Ratio Lower Upper  
 65 100  
 67 53.2 0.0 104.0

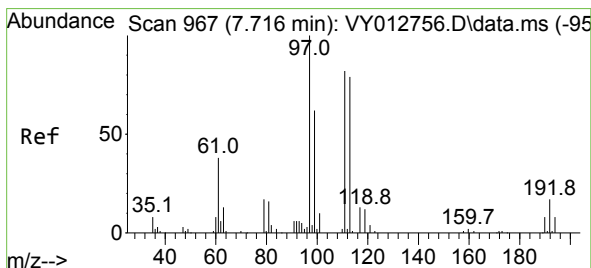
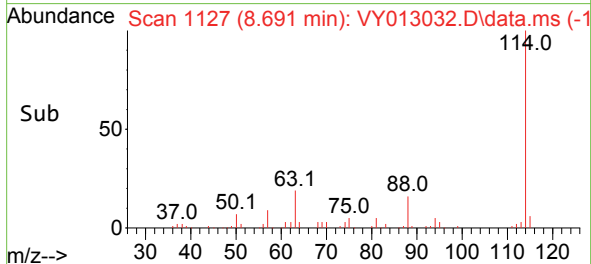
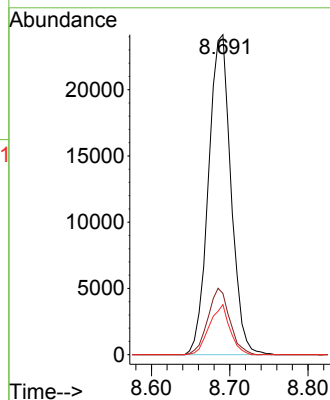
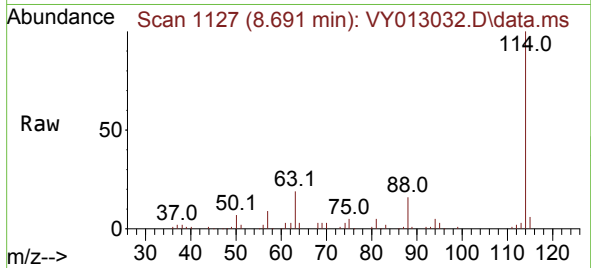




#34  
 1,4-Difluorobenzene  
 Concen: 50.000 ug/l  
 RT: 8.691 min Scan# 1127  
 Delta R.T. -0.000 min  
 Lab File: VY013032.D  
 Acq: 21 Mar 2023 17:09

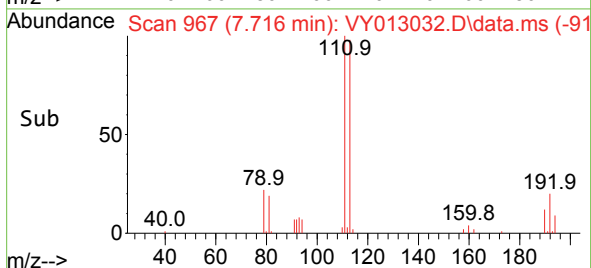
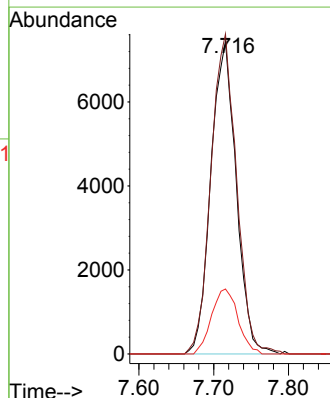
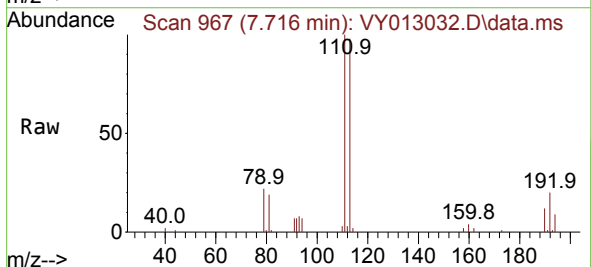
Instrument : MSVOA\_Y  
 ClientSampleId : SP-1RE

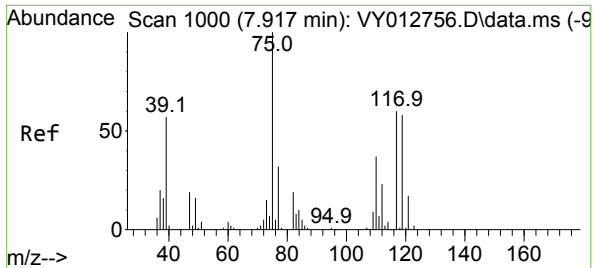
Tgt Ion	Resp	Lower	Upper
114	48102		
63	19.2	0.0	37.4
88	15.7	0.0	28.6



#35  
 Dibromofluoromethane  
 Concen: 60.459 ug/l  
 RT: 7.716 min Scan# 967  
 Delta R.T. -0.000 min  
 Lab File: VY013032.D  
 Acq: 21 Mar 2023 17:09

Tgt Ion	Resp	Lower	Upper
113	17551		
113	100		
111	103.7	82.2	123.2
192	21.7	16.8	25.2

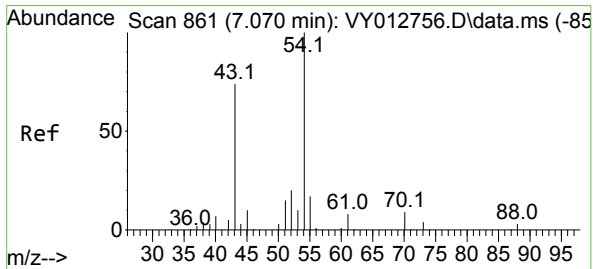
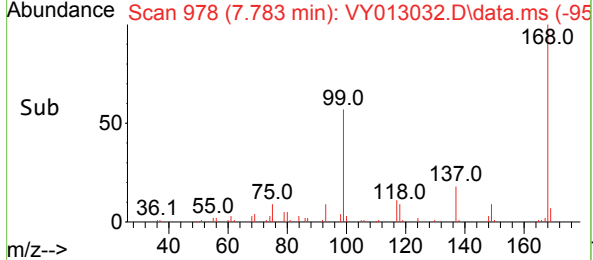
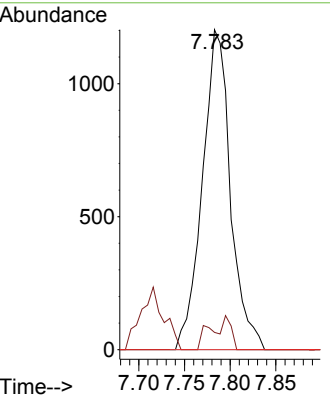
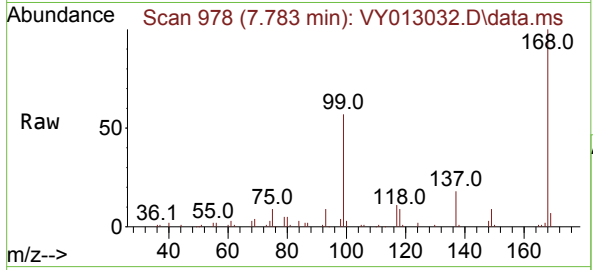




#36  
 1,1-Dichloropropene  
 Concen: 5.279 ug/l  
 RT: 7.783 min Scan# 91  
 Delta R.T. -0.134 min  
 Lab File: VY013032.D  
 Acq: 21 Mar 2023 17:09

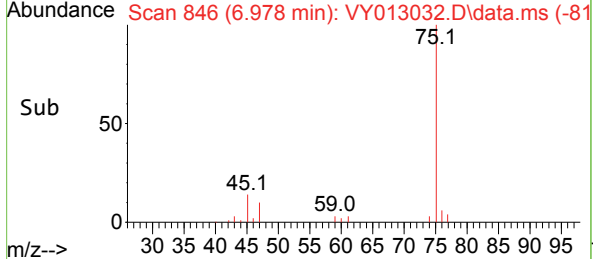
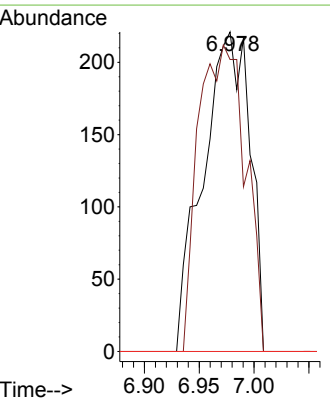
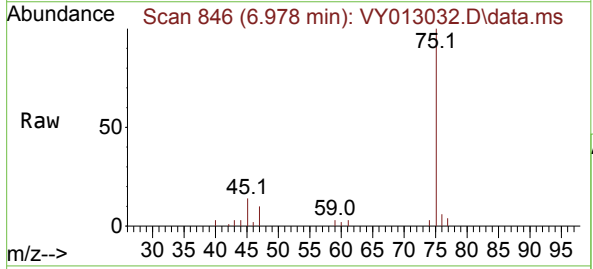
Instrument : MSVOA\_Y  
 ClientSampleId : SP-1RE

Tgt Ion	Resp	Lower	Upper
75	2568		
75	100		
110	4.2	17.8	53.3#
77	0.0	25.0	37.4#

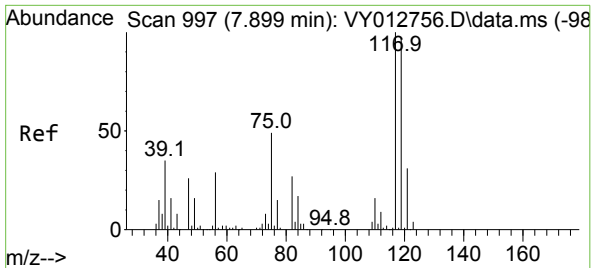


#37  
 Ethyl Acetate  
 Concen: 2.149 ug/l  
 RT: 6.978 min Scan# 846  
 Delta R.T. -0.092 min  
 Lab File: VY013032.D  
 Acq: 21 Mar 2023 17:09

Tgt Ion	Resp	Lower	Upper
43	659		
43	100		
61	96.5	10.7	16.1#
70	0.0	7.8	11.8#

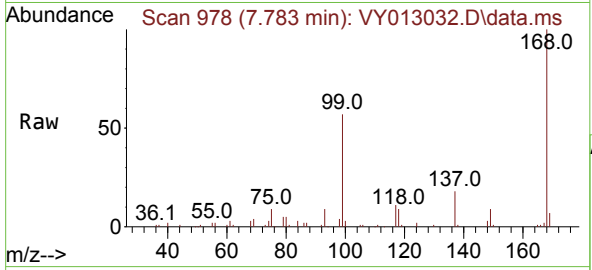




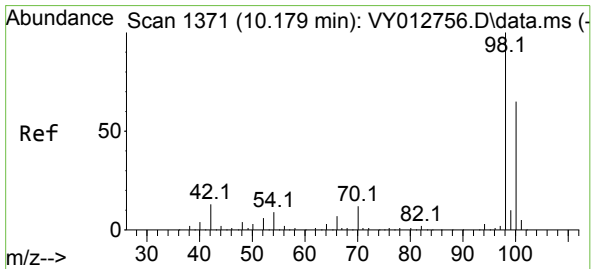
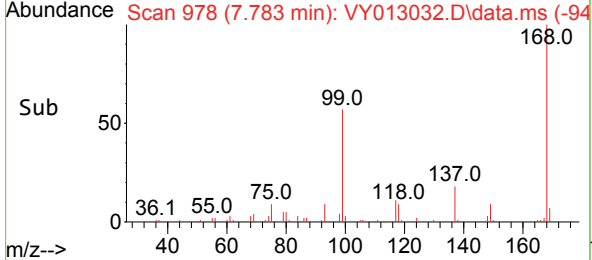
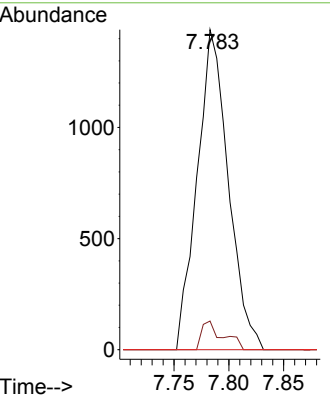


#38  
 Carbon Tetrachloride  
 Concen: 5.659 ug/l  
 RT: 7.783 min Scan# 91  
 Delta R.T. -0.116 min  
 Lab File: VY013032.D  
 Acq: 21 Mar 2023 17:09

Instrument :  
 MSVOA\_Y  
 ClientSampleId :  
 SP-1RE

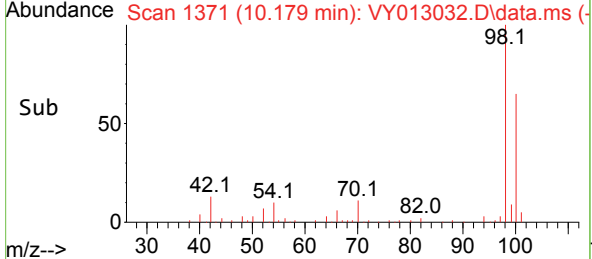
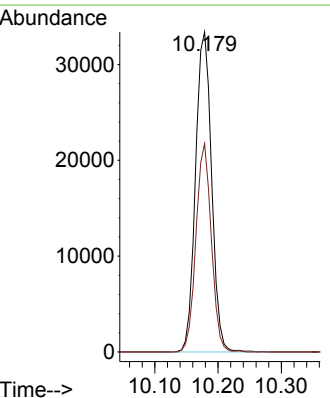
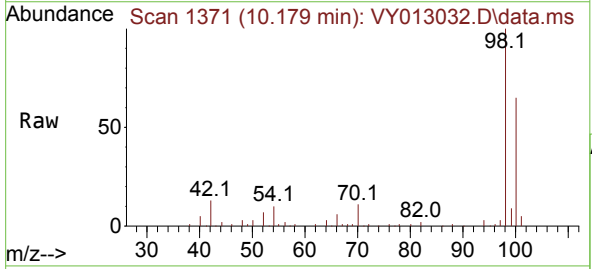


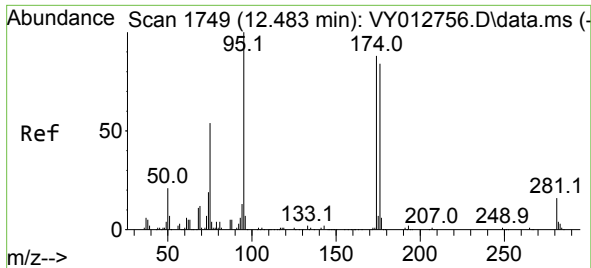
Tgt Ion:117 Resp: 2843  
 Ion Ratio Lower Upper  
 117 100  
 119 9.0 77.2 115.8#  
 121 0.0 24.7 37.1#



#50  
 Toluene-d8  
 Concen: 55.531 ug/l  
 RT: 10.179 min Scan# 1371  
 Delta R.T. -0.000 min  
 Lab File: VY013032.D  
 Acq: 21 Mar 2023 17:09

Tgt Ion: 98 Resp: 58933  
 Ion Ratio Lower Upper  
 98 100  
 100 62.5 50.9 76.3



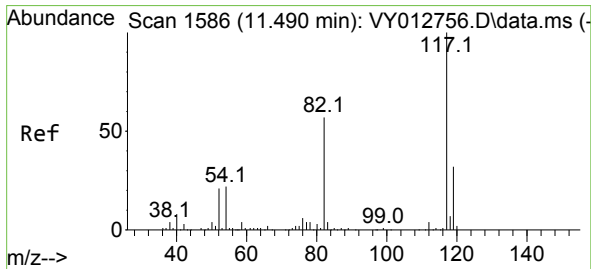
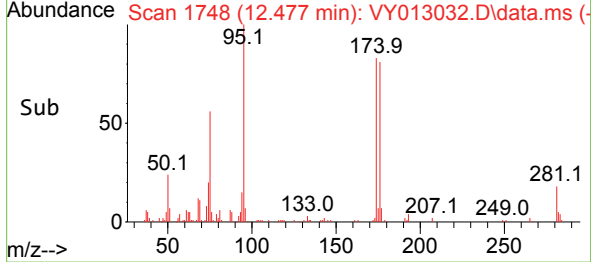
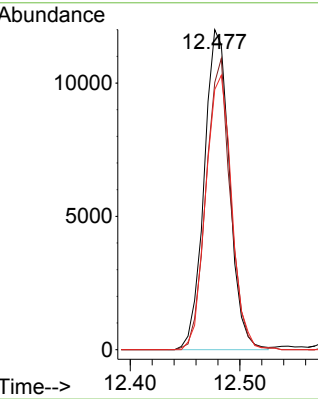
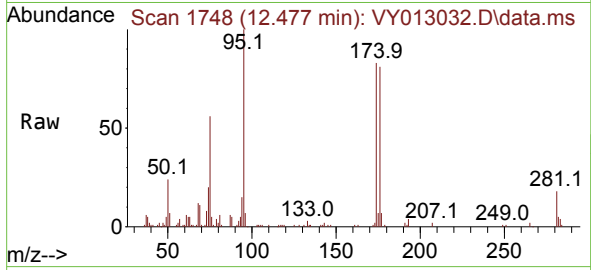


#62  
 4-Bromofluorobenzene  
 Concen: 53.732 ug/l  
 RT: 12.477 min Scan# 1  
 Delta R.T. -0.006 min  
 Lab File: VY013032.D  
 Acq: 21 Mar 2023 17:09

Instrument :  
 MSVOA\_Y  
 ClientSampleId :  
 SP-1RE

Tgt Ion: 95 Resp: 19247

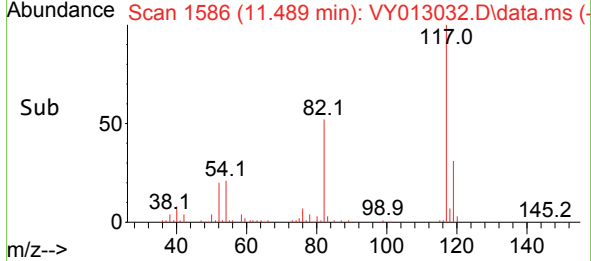
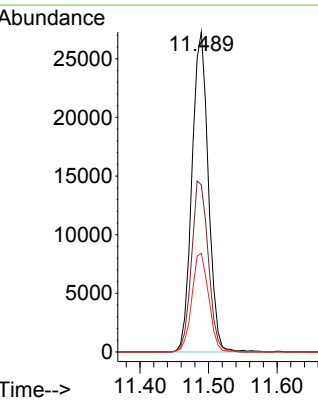
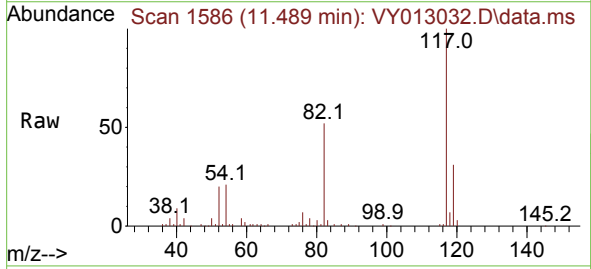
Ion	Ratio	Lower	Upper
95	100		
174	87.5	0.0	176.6
176	87.7	0.0	170.2

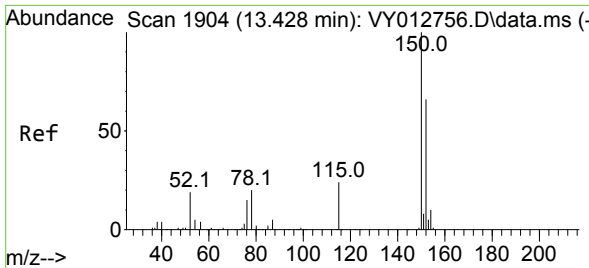


#63  
 Chlorobenzene-d5  
 Concen: 50.000 ug/l  
 RT: 11.489 min Scan# 1586  
 Delta R.T. -0.000 min  
 Lab File: VY013032.D  
 Acq: 21 Mar 2023 17:09

Tgt Ion: 117 Resp: 45289

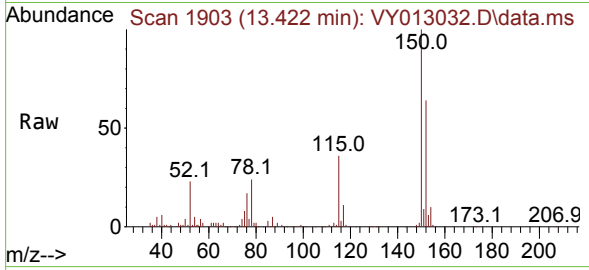
Ion	Ratio	Lower	Upper
117	100		
82	52.3	45.4	68.0
119	30.8	25.6	38.4



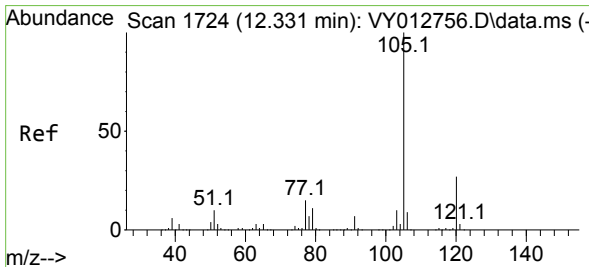
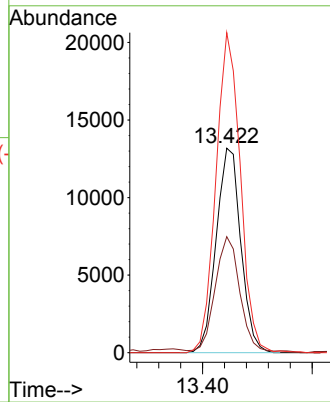
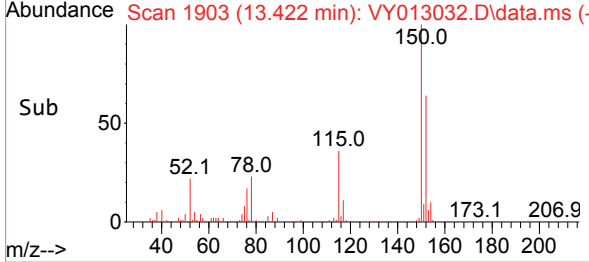


#72  
 1,4-Dichlorobenzene-d4  
 Concen: 50.000 ug/l  
 RT: 13.422 min Scan# 1903  
 Delta R.T. -0.006 min  
 Lab File: VY013032.D  
 Acq: 21 Mar 2023 17:09

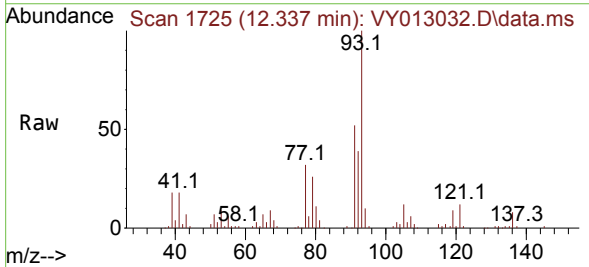
Instrument :  
 MSVOA\_Y  
 ClientSampleId :  
 SP-1RE



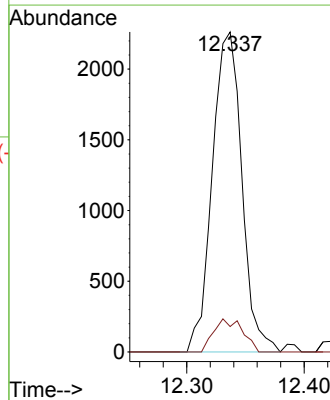
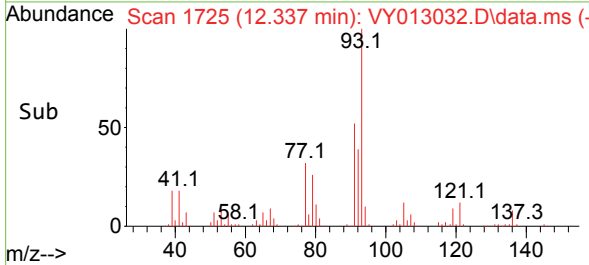
Tgt Ion:152 Resp: 20590  
 Ion Ratio Lower Upper  
 152 100  
 115 57.7 27.1 81.3  
 150 155.2 0.0 347.8

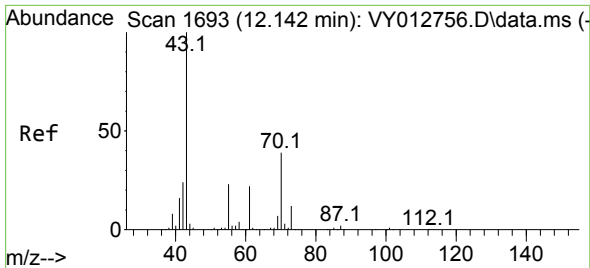


#73  
 Isopropylbenzene  
 Concen: 2.710 ug/l  
 RT: 12.337 min Scan# 1725  
 Delta R.T. 0.006 min  
 Lab File: VY013032.D  
 Acq: 21 Mar 2023 17:09



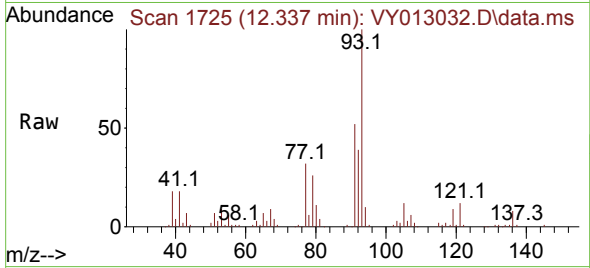
Tgt Ion:105 Resp: 3955  
 Ion Ratio Lower Upper  
 105 100  
 120 10.1 13.4 40.2#





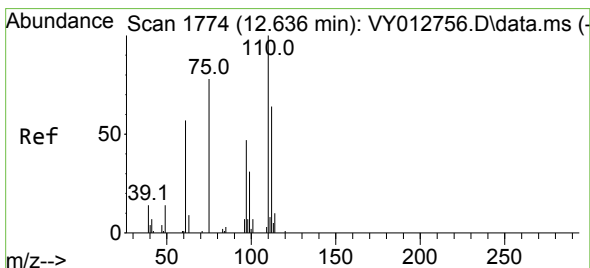
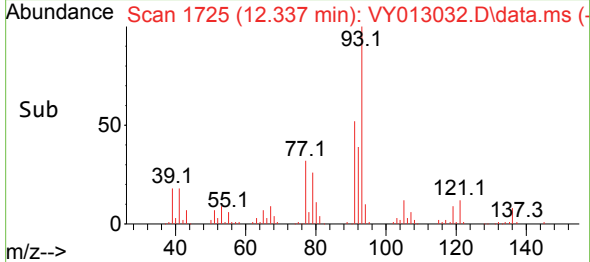
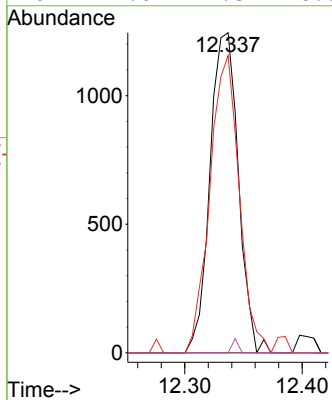
#74  
 N-amy1 acetate  
 Concen: 4.541 ug/l  
 RT: 12.337 min Scan# 1  
 Delta R.T. 0.195 min  
 Lab File: VY013032.D  
 Acq: 21 Mar 2023 17:09

Instrument :  
 MSVOA\_Y  
 ClientSampleId :  
 SP-1RE



Tgt Ion: 43 Resp: 2085

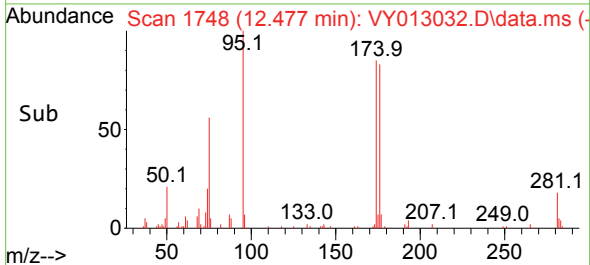
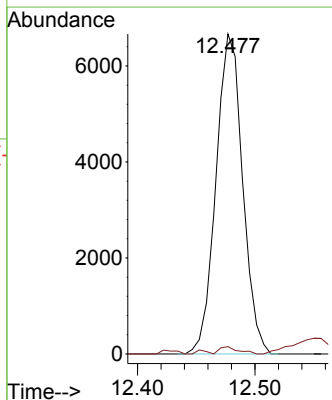
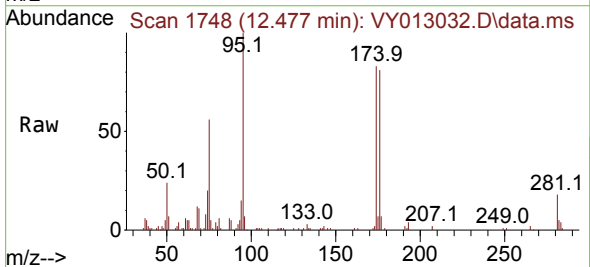
Ion	Ratio	Lower	Upper
43	100		
70	0.0	31.6	47.4#
55	96.4	18.8	28.2#
61	1.0	17.8	26.8#

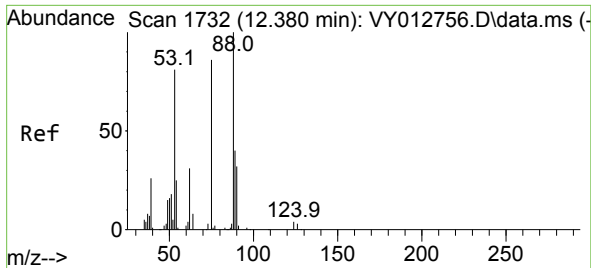


#76  
 1,2,3-Trichloropropane  
 Concen: 42.716 ug/l  
 RT: 12.477 min Scan# 1748  
 Delta R.T. -0.159 min  
 Lab File: VY013032.D  
 Acq: 21 Mar 2023 17:09

Tgt Ion: 75 Resp: 10503

Ion	Ratio	Lower	Upper
75	100		
77	2.1	0.0	0.0#

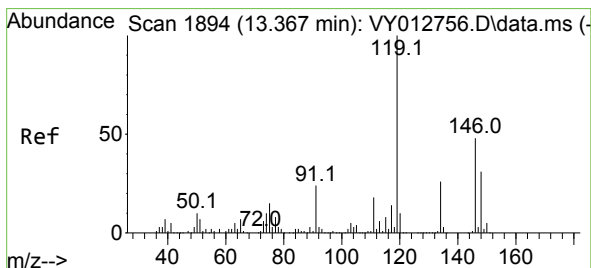
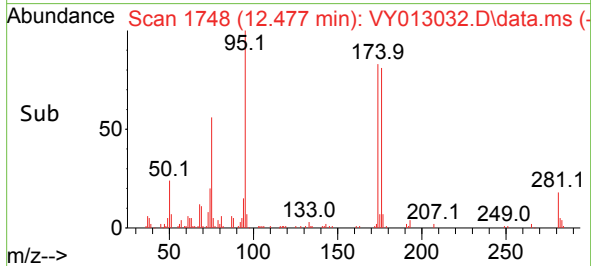
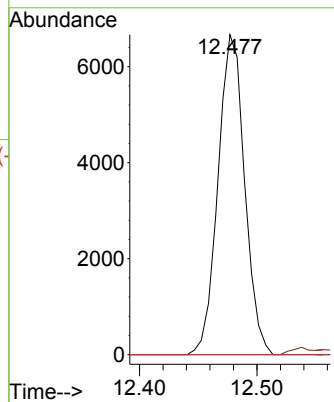
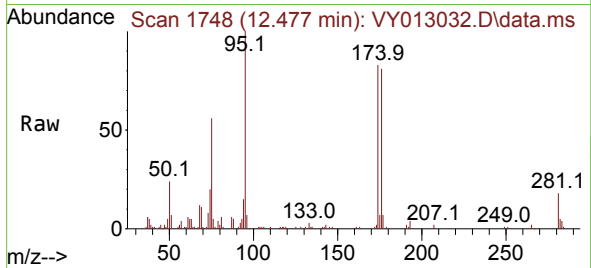




#81  
 trans-1,4-Dichloro-2-butene  
 Concen: 88.510 ug/l  
 RT: 12.477 min Scan# 11  
 Delta R.T. 0.097 min  
 Lab File: VY013032.D  
 Acq: 21 Mar 2023 17:09

Instrument :  
 MSVOA\_Y  
 ClientSampleId :  
 SP-1RE

Tgt Ion: 75 Resp: 10503  
 Ion Ratio Lower Upper  
 75 100  
 53 0.0 73.4 110.0#  
 89 0.0 36.6 55.0#



#86  
 p-Isopropyltoluene  
 Concen: 2.543 ug/l  
 RT: 13.361 min Scan# 1893  
 Delta R.T. -0.006 min  
 Lab File: VY013032.D  
 Acq: 21 Mar 2023 17:09

Tgt Ion: 119 Resp: 3295  
 Ion Ratio Lower Upper  
 119 100  
 134 29.8 13.2 39.6  
 91 0.0 11.8 35.3#

