

Data Path : Z:\voasrv\HPCHEM1\MSVOA_Y\Data\VY032123\
 Data File : VY013026.D
 Acq On : 21 Mar 2023 14:48
 Operator : KP/MD
 Sample : 02020-21
 Misc : 5.00g/5.0mL/MSVOA_Y/SOIL
 ALS Vial : 10 Sample Multiplier: 1

Instrument :
 MSVOA_Y
 ClientSampleId :
 SP-3

Integration Parameters: RTEINT.P

Integrator: RTE
 Smoothing : ON Filtering: 5
 Sampling : 1 Min Area: 3 % of largest Peak
 Start Thrs: 0.2 Max Peaks: 100
 Stop Thrs : 0 Peak Location: TOP

If leading or trailing edge < 100 prefer < Baseline drop else tangent >
 Peak separation: 5

Method : Z:\voasrv\HPCHEM1\MSVOA_Y\methods\82Y030223S.M
 Title : SW846 8260

Signal : TIC: VY013026.D\data.ms

peak #	R.T. min	first scan	max scan	last scan	PK TY	peak height	corr. area	corr. % max.	% of total
1	3.948	344	349	355	rBV3	385	709	1.12%	0.199%
2	4.186	381	388	389	rBV3	461	663	1.04%	0.186%
3	4.698	468	472	473	rBV	1686	2012	3.17%	0.565%
4	6.966	836	844	858	rBV	4121	12692	20.00%	3.565%
5	7.716	959	967	973	rBV2	10373	25497	40.19%	7.161%
6	7.789	973	979	991	rVB	18257	40711	64.17%	11.434%
7	8.137	1024	1036	1048	rBV3	12013	33561	52.90%	9.426%
8	8.685	1119	1126	1136	rBV	24318	48319	76.16%	13.571%
9	10.179	1362	1371	1379	rBV	37236	63446	100.00%	17.819%
10	10.581	1431	1437	1445	rBB	2499	4239	6.68%	1.191%
11	10.941	1492	1496	1502	rVB4	659	1056	1.66%	0.297%
12	11.313	1549	1557	1565	rBV4	1681	2979	4.70%	0.837%
13	11.490	1579	1586	1594	rBV2	31670	52297	82.43%	14.688%
14	12.483	1743	1749	1758	rVB2	18006	30982	48.83%	8.702%
15	13.422	1897	1903	1910	rVB	23847	35492	55.94%	9.968%
16	15.312	2209	2213	2217	rVB4	879	1396	2.20%	0.392%

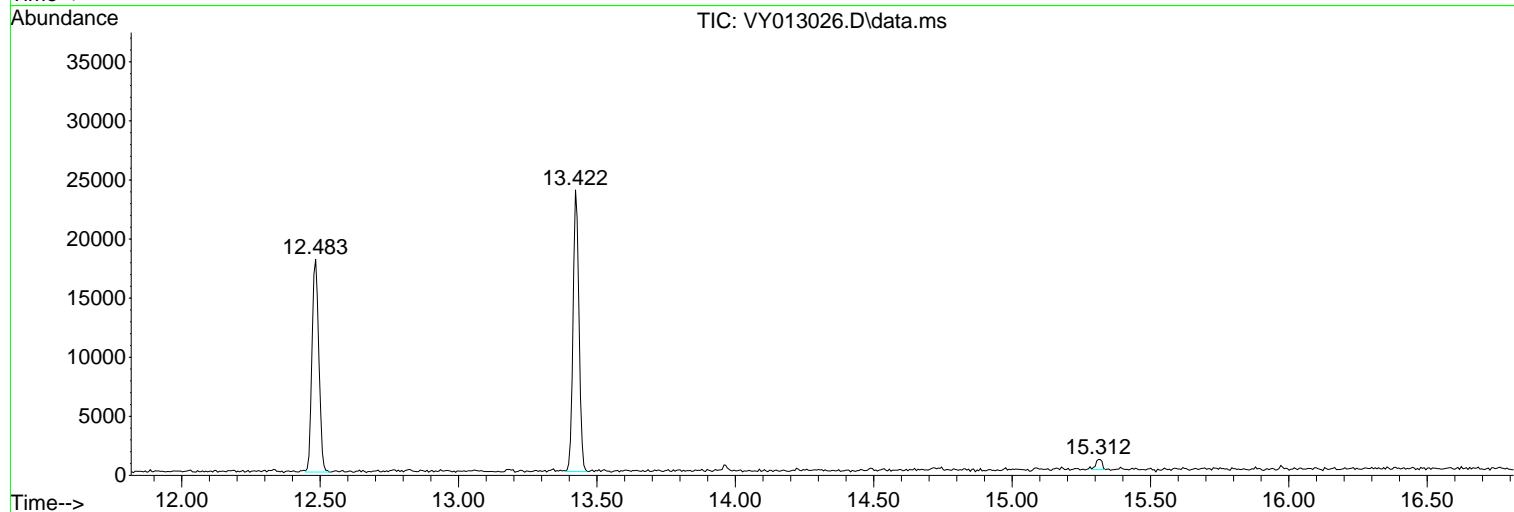
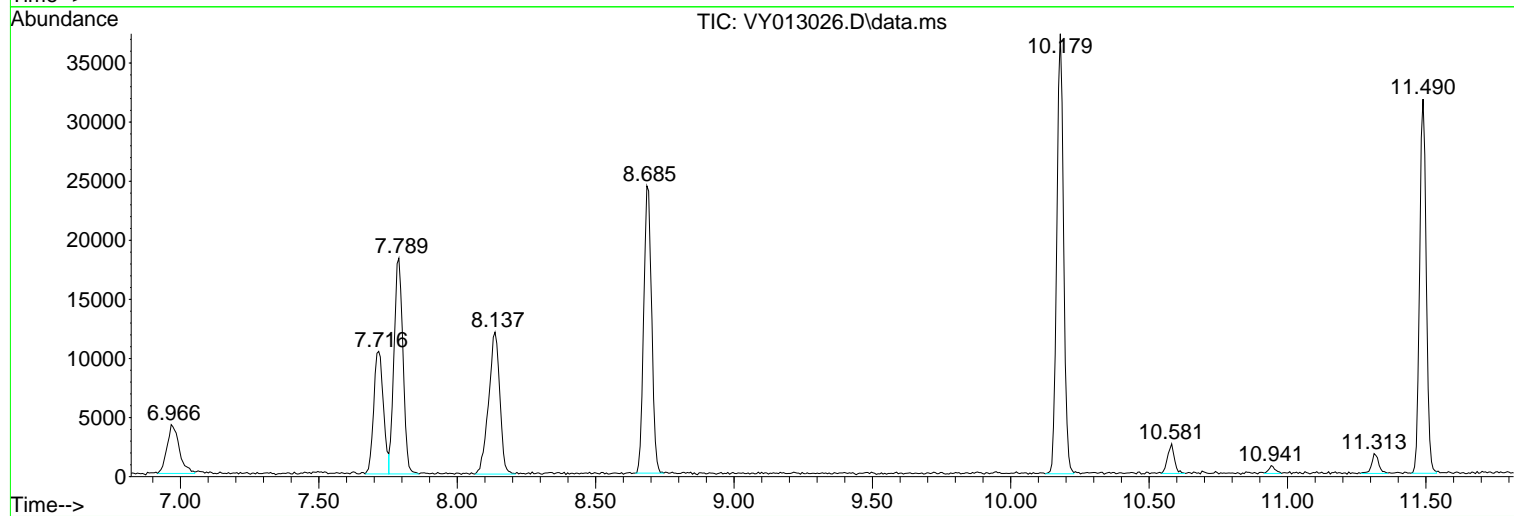
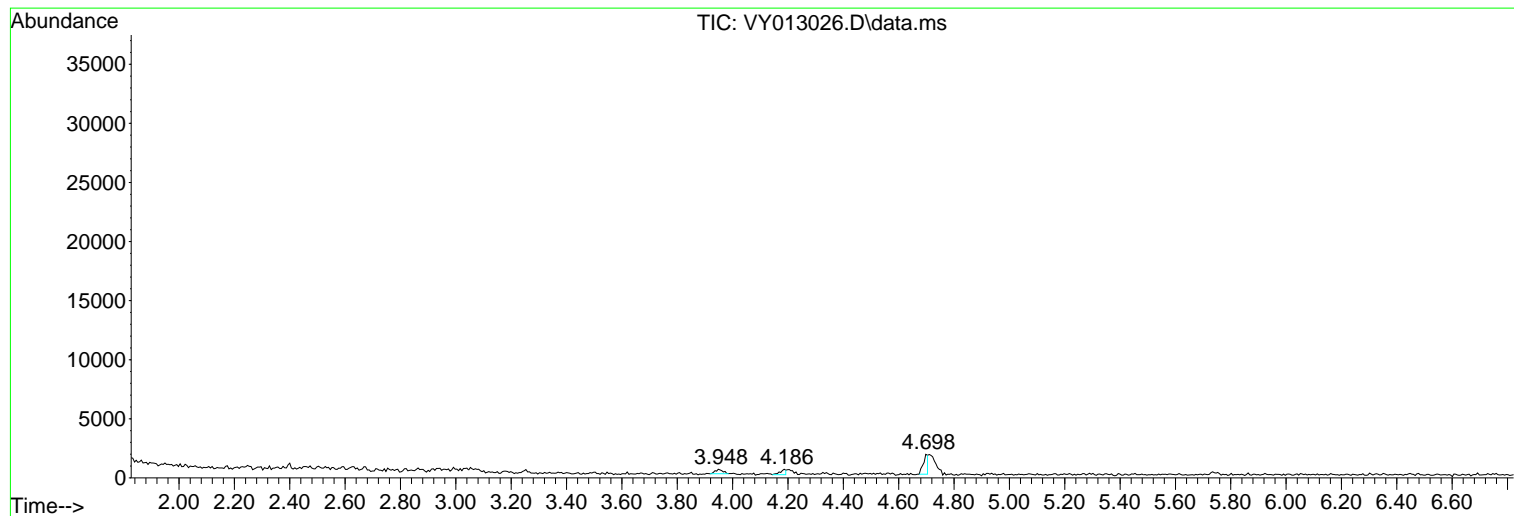
Sum of corrected areas: 356051

Data Path : Z:\voasrv\HPCHEM1\MSVOA_Y\Data\VY032123\
Data File : VY013026.D
Acq On : 21 Mar 2023 14:48
Operator : KP/MD
Sample : 02020-21
Misc : 5.00g/5.0mL/MSVOA_Y/SOIL
ALS Vial : 10 Sample Multiplier: 1

Instrument :
MSVOA_Y
ClientSampleId :
SP-3

Quant Method : Z:\voasrv\HPCHEM1\MSVOA_Y\methods\82Y030223S.M
Quant Title : SW846 8260

TIC Library : C:\Database\NIST20.L
TIC Integration Parameters: LSCINT.P



Library Search Compound Report

Data Path : Z:\voasrv\HPCHEM1\MSVOA_Y\Data\VY032123\
Data File : VY013026.D
Acq On : 21 Mar 2023 14:48
Operator : KP/MD
Sample : 02020-21
Misc : 5.00g/5.0mL/MSVOA_Y/SOIL
ALS Vial : 10 Sample Multiplier: 1

Instrument :
MSVOA_Y
ClientSampleId :
SP-3

Quant Method : Z:\voasrv\HPCHEM1\MSVOA_Y\methods\82Y030223S.M
Quant Title : SW846 8260

TIC Library : C:\Database\NIST20.L
TIC Integration Parameters: LSCINT.P

No Library Search Compounds Detected

Data Path : Z:\voasrv\HPCHEM1\MSVOA_Y\Data\VY032123\
Data File : VY013026.D
Acq On : 21 Mar 2023 14:48
Operator : KP/MD
Sample : 02020-21
Misc : 5.00g/5.0mL/MSVOA_Y/SOIL
ALS Vial : 10 Sample Multiplier: 1

Instrument :
MSVOA_Y
ClientSampleId :
SP-3

Quant Method : Z:\voasrv\HPCHEM1\MSVOA_Y\methods\82Y030223S.M
Quant Title : SW846 8260

TIC Library : C:\Database\NIST0.L
TIC Integration Parameters: LSCINT.P

TIC Top Hit name	RT	EstConc	Units	Response	#	RT	Resp	Conc
------------------	----	---------	-------	----------	---	----	------	------
