

Data Path : Z:\voasrv\HPCHEM1\MSVOA\_Y\Data\VY032421\  
 Data File : VY004189.D  
 Acq On : 24 Mar 2021 16:45  
 Operator : SY/MD  
 Sample : M1792-01  
 Misc : 4.34g/5mL/MSVOA\_Y/SOIL  
 ALS Vial : 18 Sample Multiplier: 1

Instrument :  
 MSVOA\_Y  
 ClientSampled :  
 TP-5

Integration Parameters: RTEINT.P

Integrator: RTE  
 Smoothing : ON Filtering: 5  
 Sampling : 1 Min Area: 3 % of largest Peak  
 Start Thrs: 0.2 Max Peaks: 100  
 Stop Thrs : 0 Peak Location: TOP

If leading or trailing edge < 100 prefer < Baseline drop else tangent >  
 Peak separation: 5

Method : Z:\voasrv\HPCHEM1\MSVOA\_Y\methods\82Y030821S.M  
 Title : SW846 8260

Signal : TIC: VY004189.D\data.ms

peak #	R.T. min	first scan	max scan	last scan	PK TY	peak height	corr. area	corr. % max.	% of total
1	1.893	3	12	22	rVB2	43595	97329	9.47%	1.315%
2	2.229	60	67	68	rBV2	7344	11035	1.07%	0.149%
3	2.253	68	71	78	rVB	10776	17526	1.71%	0.237%
4	2.393	89	94	100	rVB	12894	20932	2.04%	0.283%
5	2.704	140	145	151	rVB	7032	13191	1.28%	0.178%
6	3.960	340	351	372	rBV	59271	167461	16.29%	2.263%
7	4.210	382	392	400	rBV3	6193	18691	1.82%	0.253%
8	4.734	466	478	493	rBV2	11738	39400	3.83%	0.533%
9	6.996	839	849	861	rBV	28272	78537	7.64%	1.061%
10	7.728	958	969	975	rBV	143703	338384	32.92%	4.574%
11	7.801	975	981	994	rVB	259376	585081	56.92%	7.908%
12	8.148	1028	1038	1050	rBV	143626	315432	30.69%	4.263%
13	8.697	1119	1128	1140	rVB	380949	744726	72.45%	10.066%
14	10.185	1364	1372	1379	rBV	596482	1027913	100.00%	13.893%
15	10.246	1379	1382	1388	rVB	7920	12794	1.24%	0.173%
16	11.495	1579	1587	1596	rVB	523473	857896	83.46%	11.595%
17	11.593	1596	1603	1610	rBV	13588	21990	2.14%	0.297%
18	11.703	1611	1621	1630	rBV	62432	118157	11.49%	1.597%
19	12.032	1667	1675	1681	rVB	22158	38487	3.74%	0.520%
20	12.483	1742	1749	1760	rVB2	441892	708481	68.92%	9.576%
21	12.672	1770	1780	1781	rBV8	5798	12489	1.21%	0.169%
22	12.806	1798	1802	1808	rVB2	27737	41549	4.04%	0.562%
23	13.123	1848	1854	1860	rBV2	16225	32149	3.13%	0.435%
24	13.318	1880	1886	1890	rBV7	5299	10324	1.00%	0.140%
25	13.428	1897	1904	1912	rVV	492183	767867	74.70%	10.378%
26	13.623	1932	1936	1940	rBV3	9228	14722	1.43%	0.199%
27	13.672	1940	1944	1952	rVB6	8322	20394	1.98%	0.276%
28	13.751	1952	1957	1962	rBV	55566	84120	8.18%	1.137%
29	13.916	1977	1984	1988	rBV2	8514	16920	1.65%	0.229%
30	13.971	1988	1993	1997	rVB2	17933	28784	2.80%	0.389%
31	14.019	1997	2001	2006	rVB6	6079	10494	1.02%	0.142%
32	14.086	2006	2012	2016	rBV3	12351	21208	2.06%	0.287%
33	14.141	2017	2021	2028	rBV9	4766	11420	1.11%	0.154%
34	14.257	2034	2040	2046	rVV9	18427	53416	5.20%	0.722%
35	14.312	2046	2049	2057	rVB4	15876	38684	3.76%	0.523%
36	14.385	2057	2061	2064	rBV2	17713	22837	2.22%	0.309%

Data Path : Z:\voasrv\HPCHEM1\MSVOA\_Y\Data\VY032421\  
 Data File : VY004189.D  
 Acq On : 24 Mar 2021 16:45  
 Operator : SY/MD  
 Sample : M1792-01  
 Misc : 4.34g/5mL/MSVOA\_Y/SOIL  
 ALS Vial : 18 Sample Multiplier: 1

Instrument :  
 MSVOA\_Y  
 ClientSampleId :  
 TP-5

Integration Parameters: RTEINT.P  
 Integrator: RTE  
 Smoothing : ON Filtering: 5  
 Sampling : 1 Min Area: 3 % of largest Peak  
 Start Thrs: 0.2 Max Peaks: 100  
 Stop Thrs : 0 Peak Location: TOP

If leading or trailing edge < 100 prefer < Baseline drop else tangent >  
 Peak separation: 5

Method : Z:\voasrv\HPCHEM1\MSVOA\_Y\methods\82Y030821S.M  
 Title : SW846 8260

37	14.422	2064	2067	2072	rVB3	10781	12805	1.25%	0.173%
38	14.477	2073	2076	2081	rBV7	5911	11104	1.08%	0.150%
39	14.568	2087	2091	2094	rVV2	12808	26038	2.53%	0.352%
40	14.611	2094	2098	2104	rVV	89139	128077	12.46%	1.731%
41	14.684	2104	2110	2115	rVV5	36406	80296	7.81%	1.085%
42	14.733	2115	2118	2125	rVB3	30151	49533	4.82%	0.669%
43	14.836	2131	2135	2142	rVB	19071	31529	3.07%	0.426%
44	14.946	2149	2153	2156	rVB4	13705	18531	1.80%	0.250%
45	15.056	2165	2171	2176	rBV5	20192	45227	4.40%	0.611%
46	15.214	2192	2197	2200	rBV4	21480	40567	3.95%	0.548%
47	15.293	2207	2210	2214	rBV2	15167	21061	2.05%	0.285%
48	15.354	2215	2220	2226	rVV4	18561	43029	4.19%	0.582%
49	15.440	2229	2234	2242	rVB2	61444	105763	10.29%	1.429%
50	15.531	2242	2249	2255	rBV5	17263	47635	4.63%	0.644%
51	15.610	2255	2262	2267	rVB7	10104	20914	2.03%	0.283%
52	15.732	2277	2282	2289	rVB	38847	71874	6.99%	0.971%
53	15.891	2303	2308	2312	rBV4	9752	20052	1.95%	0.271%
54	16.037	2325	2332	2337	rBV4	23044	47412	4.61%	0.641%
55	16.098	2338	2342	2348	rVB9	6876	14873	1.45%	0.201%
56	16.226	2358	2363	2370	rVV3	19150	37791	3.68%	0.511%
57	16.293	2370	2374	2379	rVV3	13472	24984	2.43%	0.338%
58	16.366	2381	2386	2392	rVB	23844	41743	4.06%	0.564%
59	16.488	2401	2406	2411	rBV8	8191	19999	1.95%	0.270%
60	16.622	2425	2428	2437	rVB7	7135	17135	1.67%	0.232%

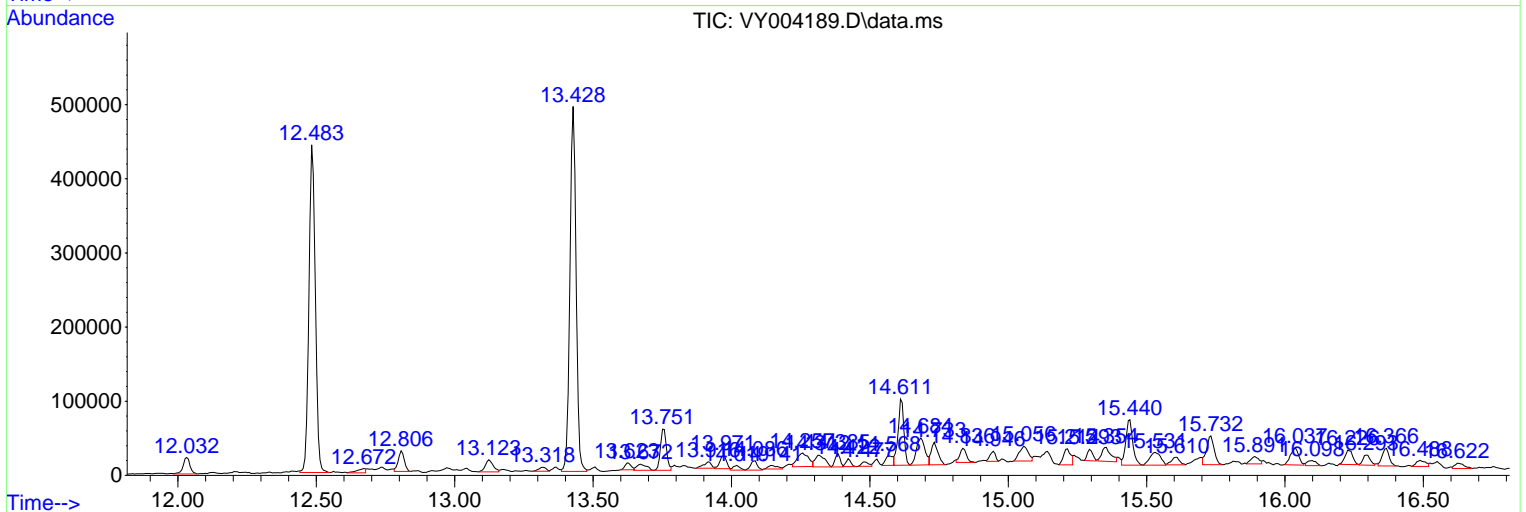
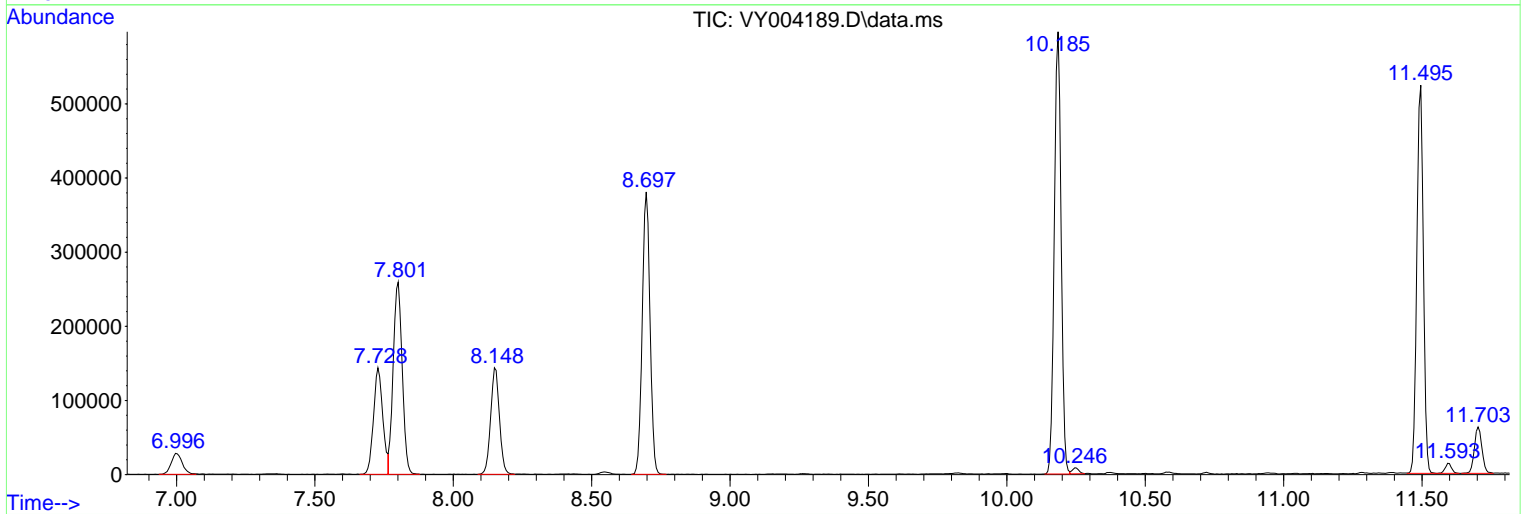
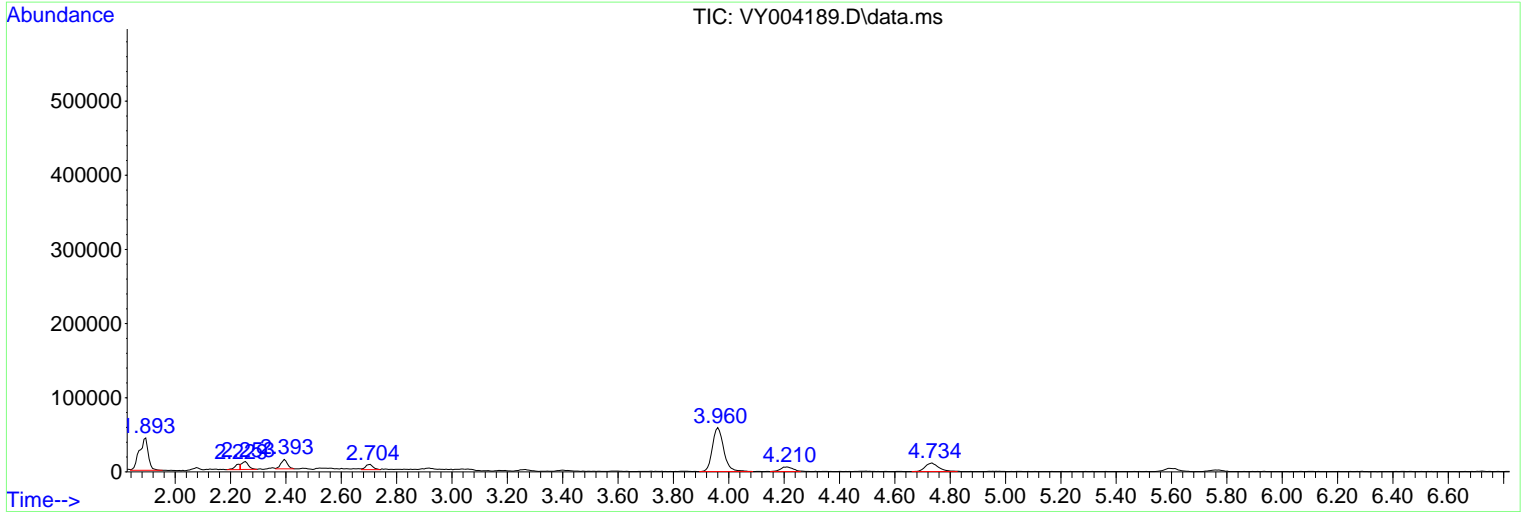
Sum of corrected areas: 7398792

Data Path : Z:\voasrv\HPCHEM1\MSVOA\_Y\Data\VY032421\  
 Data File : VY004189.D  
 Acq On : 24 Mar 2021 16:45  
 Operator : SY/MD  
 Sample : M1792-01  
 Misc : 4.34g/5mL/MSVOA\_Y/SOIL  
 ALS Vial : 18 Sample Multiplier: 1

Instrument :  
 MSVOA\_Y  
 ClientSampleId :  
 TP-5

Quant Method : Z:\voasrv\HPCHEM1\MSVOA\_Y\methods\82Y030821S.M  
 Quant Title : SW846 8260

TIC Library : C:\DATABASE\NIST11.L  
 TIC Integration Parameters: LSCINT.P



Data Path : Z:\voasrv\HPCHEM1\MSVOA\_Y\Data\VY032421\  
 Data File : VY004189.D  
 Acq On : 24 Mar 2021 16:45  
 Operator : SY/MD  
 Sample : M1792-01  
 Misc : 4.34g/5mL/MSVOA\_Y/SOIL  
 ALS Vial : 18 Sample Multiplier: 1

Instrument :  
 MSVOA\_Y  
 ClientSampled :  
 TP-5

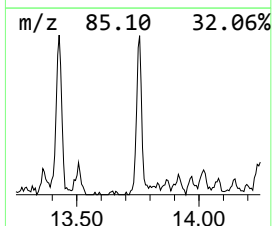
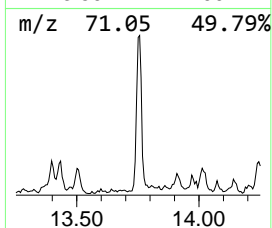
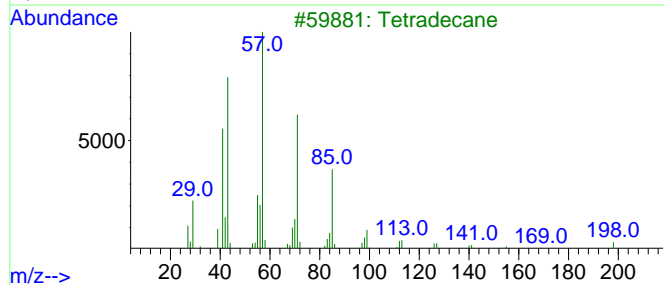
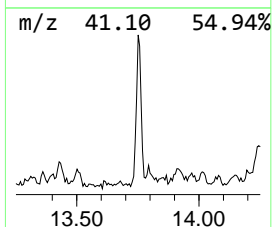
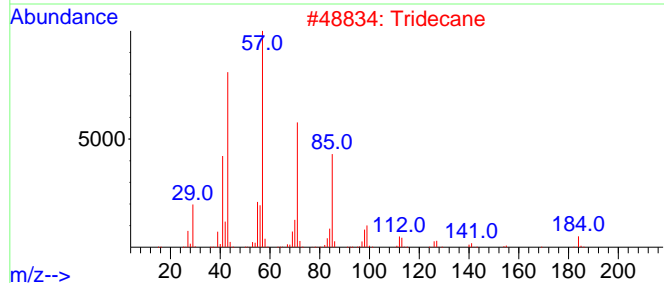
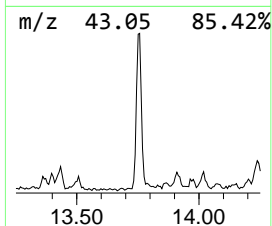
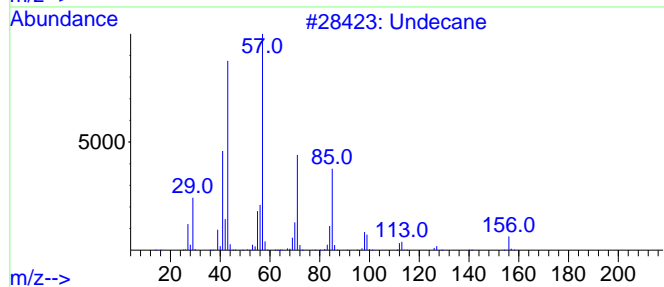
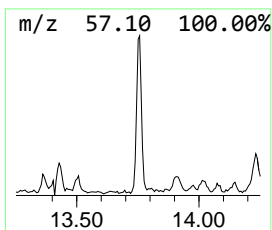
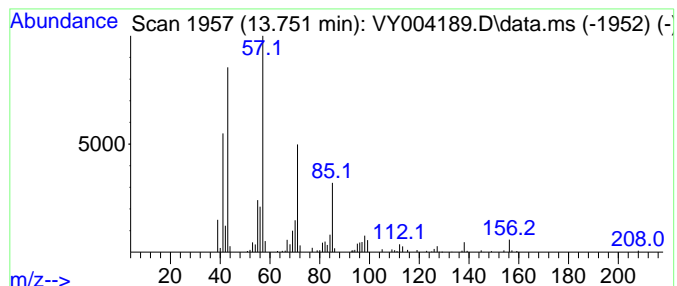
Quant Method : Z:\voasrv\HPCHEM1\MSVOA\_Y\methods\82Y030821S.M  
 Quant Title : SW846 8260

TIC Library : C:\DATABASE\NIST11.L  
 TIC Integration Parameters: LSCINT.P

\*\*\*\*\*  
 Peak Number 2 Undecane Concentration Rank 4

R.T.	EstConc	Area	Relative to ISTD	R.T.
13.751	5.48 ug/l	84120	1,4-Dichlorobenzene-d4	13.428

Hit#	of	5	Tentative ID	MW	MolForm	CAS#	Qual
1			Undecane	156	C11H24	001120-21-4	93
2			Tridecane	184	C13H28	000629-50-5	80
3			Tetradecane	198	C14H30	000629-59-4	80
4			Dodecane	170	C12H26	000112-40-3	72
5			Hexadecane	226	C16H34	000544-76-3	64



Data Path : Z:\voasrv\HPCHEM1\MSVOA\_Y\Data\VY032421\  
 Data File : VY004189.D  
 Acq On : 24 Mar 2021 16:45  
 Operator : SY/MD  
 Sample : M1792-01  
 Misc : 4.34g/5mL/MSVOA\_Y/SOIL  
 ALS Vial : 18 Sample Multiplier: 1

Instrument :  
 MSVOA\_Y  
 ClientSampleId :  
 TP-5

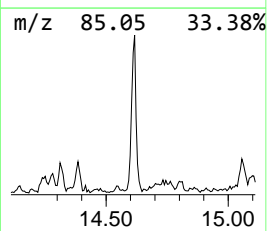
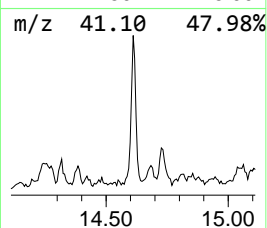
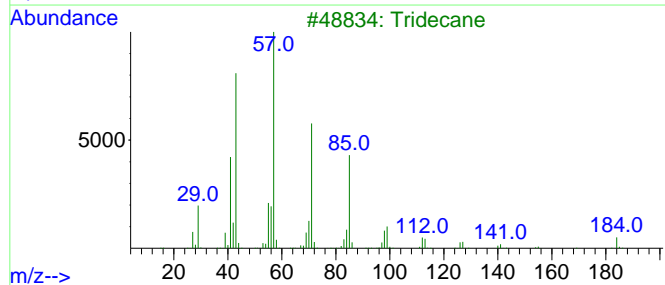
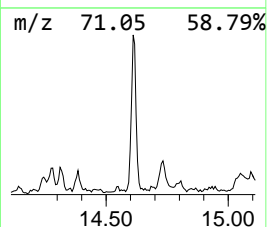
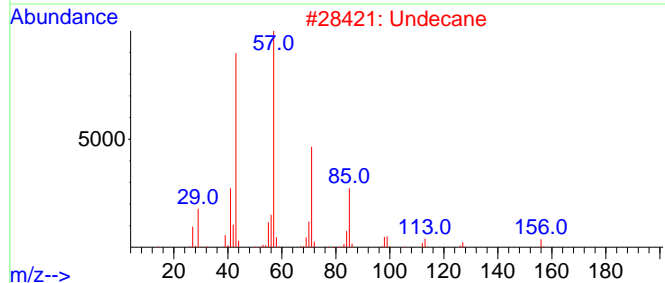
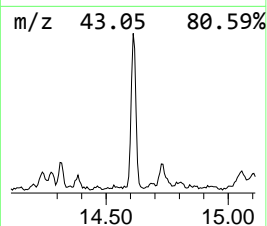
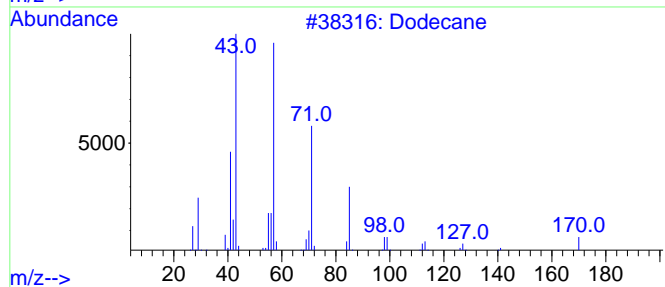
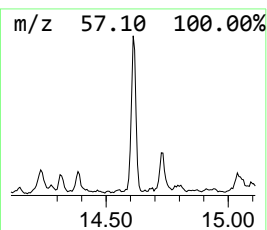
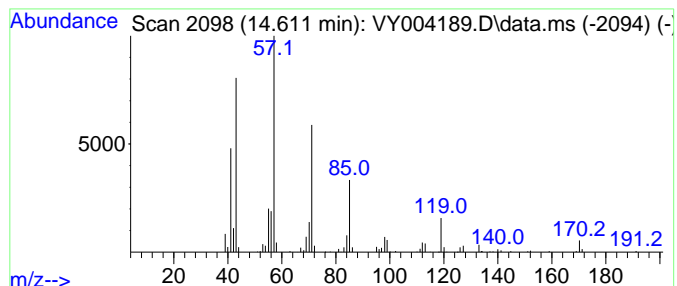
Quant Method : Z:\voasrv\HPCHEM1\MSVOA\_Y\methods\82Y030821S.M  
 Quant Title : SW846 8260

TIC Library : C:\DATABASE\NIST11.L  
 TIC Integration Parameters: LSCINT.P

\*\*\*\*\*  
 Peak Number 3 Dodecane Concentration Rank 1

R.T.	EstConc	Area	Relative to ISTD	R.T.
14.611	8.34 ug/l	128077	1,4-Dichlorobenzene-d4	13.428

Hit#	of	Tentative ID	MW	MolForm	CAS#	Qual
1	5	Dodecane	170	C12H26	000112-40-3	95
2		Undecane	156	C11H24	001120-21-4	72
3		Tridecane	184	C13H28	000629-50-5	72
4		Hexadecane	226	C16H34	000544-76-3	72
5		Tetradecane	198	C14H30	000629-59-4	64



Data Path : Z:\voasrv\HPCHEM1\MSVOA\_Y\Data\VY032421\  
 Data File : VY004189.D  
 Acq On : 24 Mar 2021 16:45  
 Operator : SY/MD  
 Sample : M1792-01  
 Misc : 4.34g/5mL/MSVOA\_Y/SOIL  
 ALS Vial : 18 Sample Multiplier: 1

Instrument :  
 MSVOA\_Y  
 ClientSampleId :  
 TP-5

Quant Method : Z:\voasrv\HPCHEM1\MSVOA\_Y\methods\82Y030821S.M  
 Quant Title : SW846 8260

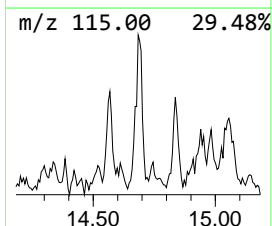
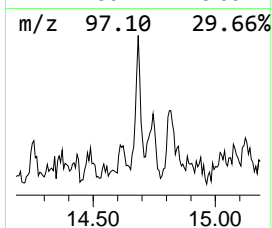
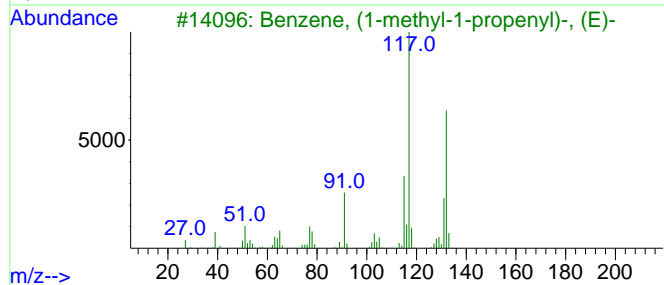
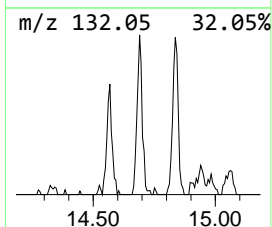
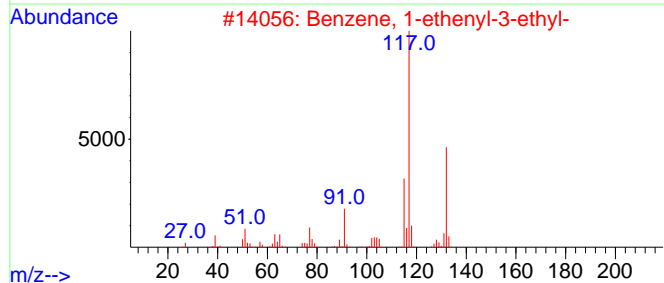
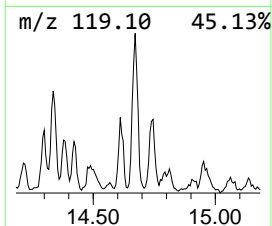
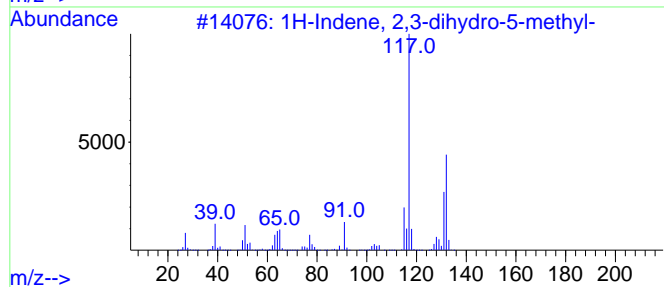
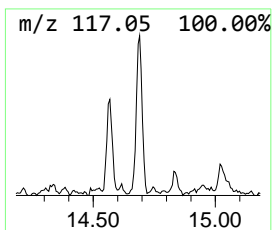
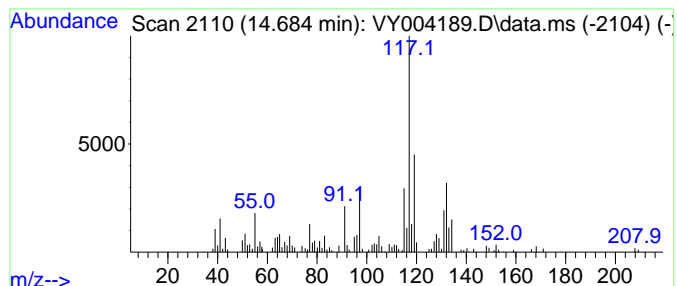
TIC Library : C:\DATABASE\NIST11.L  
 TIC Integration Parameters: LSCINT.P

\*\*\*\*\*  
 Peak Number 4 1H-Indene, 2,3-dihydro-5-me... Concentration Rank 5

R.T.	EstConc	Area	Relative to ISTD	R.T.
14.684	5.23 ug/l	80296	1,4-Dichlorobenzene-d4	13.428

Hit# of 5	Tentative ID	MW	MolForm	CAS#	Qual
1	1H-Indene, 2,3-dihydro-5-methyl-	132	C10H12	000874-35-1	83
2	Benzene, 1-ethenyl-3-ethyl-	132	C10H12	007525-62-4	60
3	Benzene, (1-methyl-1-propenyl)-, ...	132	C10H12	000768-00-3	60
4	1H-Indene, 2,3-dihydro-4-methyl-	132	C10H12	000824-22-6	60
5	1-Phenyl-1-butene	132	C10H12	000824-90-8	60



Data Path : Z:\voasrv\HPCHEM1\MSVOA\_Y\Data\VY032421\  
 Data File : VY004189.D  
 Acq On : 24 Mar 2021 16:45  
 Operator : SY/MD  
 Sample : M1792-01  
 Misc : 4.34g/5mL/MSVOA\_Y/SOIL  
 ALS Vial : 18 Sample Multiplier: 1

Instrument :  
 MSVOA\_Y  
 ClientSampleId :  
 TP-5

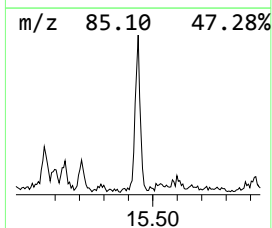
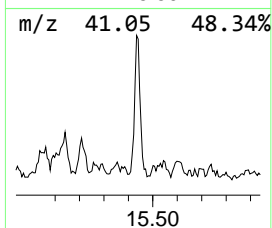
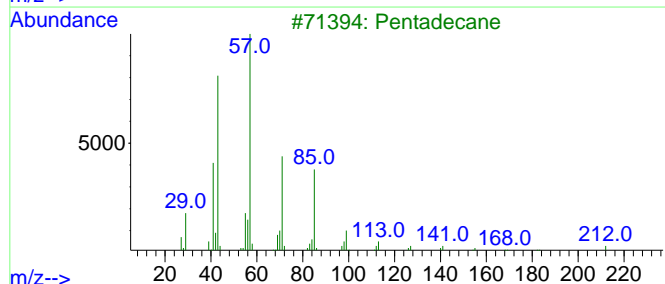
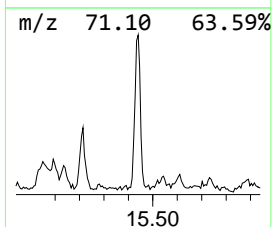
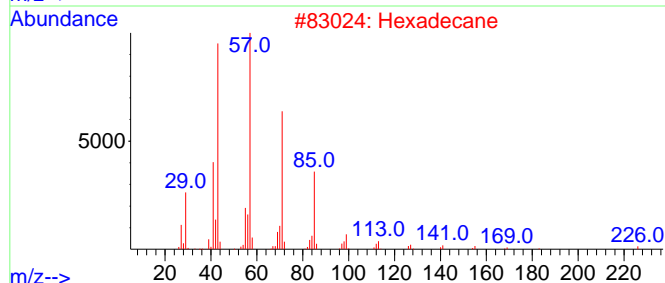
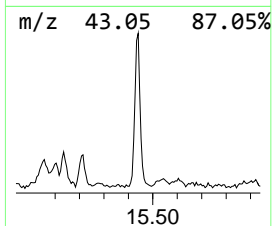
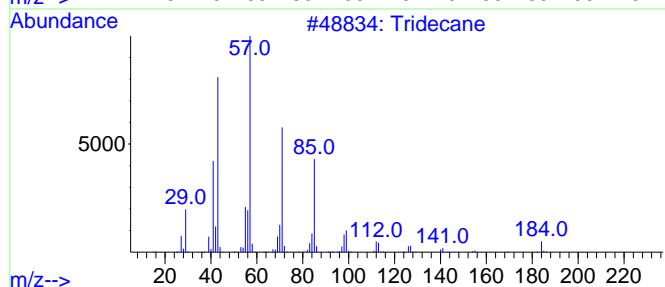
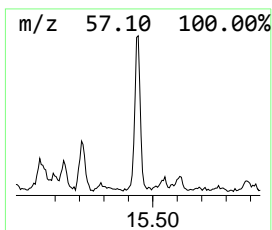
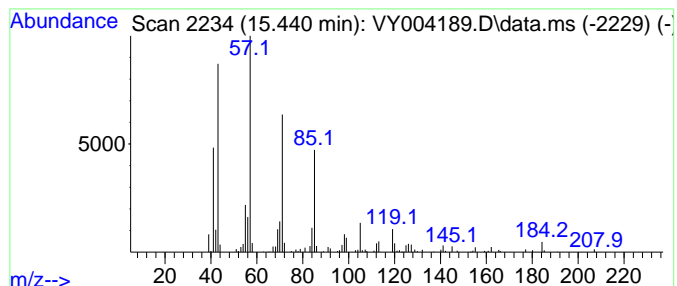
Quant Method : Z:\voasrv\HPCHEM1\MSVOA\_Y\methods\82Y030821S.M  
 Quant Title : SW846 8260

TIC Library : C:\DATABASE\NIST11.L  
 TIC Integration Parameters: LSCINT.P

\*\*\*\*\*  
 Peak Number 5 Tridecane Concentration Rank 3

R.T.	EstConc	Area	Relative to ISTD	R.T.
15.440	6.89 ug/l	105763	1,4-Dichlorobenzene-d4	13.428

Hit#	of	Tentative ID	MW	MolForm	CAS#	Qual
1	5	Tridecane	184	C13H28	000629-50-5	93
2		Hexadecane	226	C16H34	000544-76-3	80
3		Pentadecane	212	C15H32	000629-62-9	80
4		Tetradecane	198	C14H30	000629-59-4	80
5		Heptadecane	240	C17H36	000629-78-7	72



Data Path : Z:\voasrv\HPCHEM1\MSVOA\_Y\Data\VY032421\  
Data File : VY004189.D  
Acq On : 24 Mar 2021 16:45  
Operator : SY/MD  
Sample : M1792-01  
Misc : 4.34g/5mL/MSVOA\_Y/SOIL  
ALS Vial : 18 Sample Multiplier: 1

Instrument :  
MSVOA\_Y  
ClientSampleId :  
TP-5

Quant Method : Z:\voasrv\HPCHEM1\MSVOA\_Y\methods\82Y030821S.M  
Quant Title : SW846 8260

TIC Library : C:\DATABASE\NIST11.L  
TIC Integration Parameters: LSCINT.P

TIC Top Hit name	RT	EstConc	Units	Response	--Internal Standard--			
					#	RT	Resp	Conc
Undecane	13.751	5.5	ug/l	84120	4	13.428	767867	50.0
Dodecane	14.611	8.3	ug/l	128077	4	13.428	767867	50.0
1H-Indene, 2,3-...	14.684	5.2	ug/l	80296	4	13.428	767867	50.0
Tridecane	15.440	6.9	ug/l	105763	4	13.428	767867	50.0