

Data Path : Z:\VOASRV\HPCHEM1\MSVOA Y\DATA\VY032520\
 Data File : VY002067.D
 Acq On : 25 Mar 2020 15:23
 Operator : SY/MD
 Sample : L2029-03
 Misc : 7.99G/5ML/MSVOA Y/SOIL
 ALS Vial : 9 Sample Multiplier: 1

Instrument :
 MSVOA_Y
 ClientSampleId :
 SB-1C-(0-2)

Integration Parameters: RTEINT.P
 Integrator: RTE
 Smoothing : ON Filtering: 5
 Sampling : 1 Min Area: 3 % of largest Peak
 Start Thrs: 0.2 Max Peaks: 100
 Stop Thrs : 0 Peak Location: TOP

If leading or trailing edge < 100 prefer < Baseline drop else tangent >
 Peak separation: 5

Method : Z:\VOASRV\HPCHEM1\MSVOA_Y\METHODS\82Y030420S.M
 Title : SW846 8260

Signal : TIC

peak #	R.T. min	first scan	max scan	last scan	PK TY	peak height	corr. area	corr. % max.	% of total
1	1.871	17	22	29	rVB2	10246	14205	1.63%	0.313%
2	2.261	83	86	93	rVB2	8296	12673	1.46%	0.279%
3	4.749	483	494	500	rBV3	5890	17428	2.00%	0.384%
4	4.840	500	509	520	rVB3	4298	15014	1.72%	0.331%
5	7.535	943	951	959	rBV3	5007	12269	1.41%	0.271%
6	7.742	976	985	991	rBV	109549	258234	29.66%	5.694%
7	7.815	991	997	1009	rVB	186180	417477	47.95%	9.205%
8	8.169	1045	1055	1064	rBV	114939	250447	28.76%	5.522%
9	8.711	1135	1144	1156	rBV	315175	618402	71.03%	13.636%
10	10.193	1379	1387	1395	rBV	498536	870669	100.00%	19.198%
11	11.504	1594	1602	1612	rBV	472998	756101	86.84%	16.672%
12	12.497	1758	1765	1774	rVB	345153	545031	62.60%	12.018%
13	13.436	1913	1919	1931	rVB	471780	723436	83.09%	15.952%
14	13.540	1931	1936	1943	rVB2	6558	9858	1.13%	0.217%
15	14.424	2072	2081	2087	rVB3	7404	13904	1.60%	0.307%

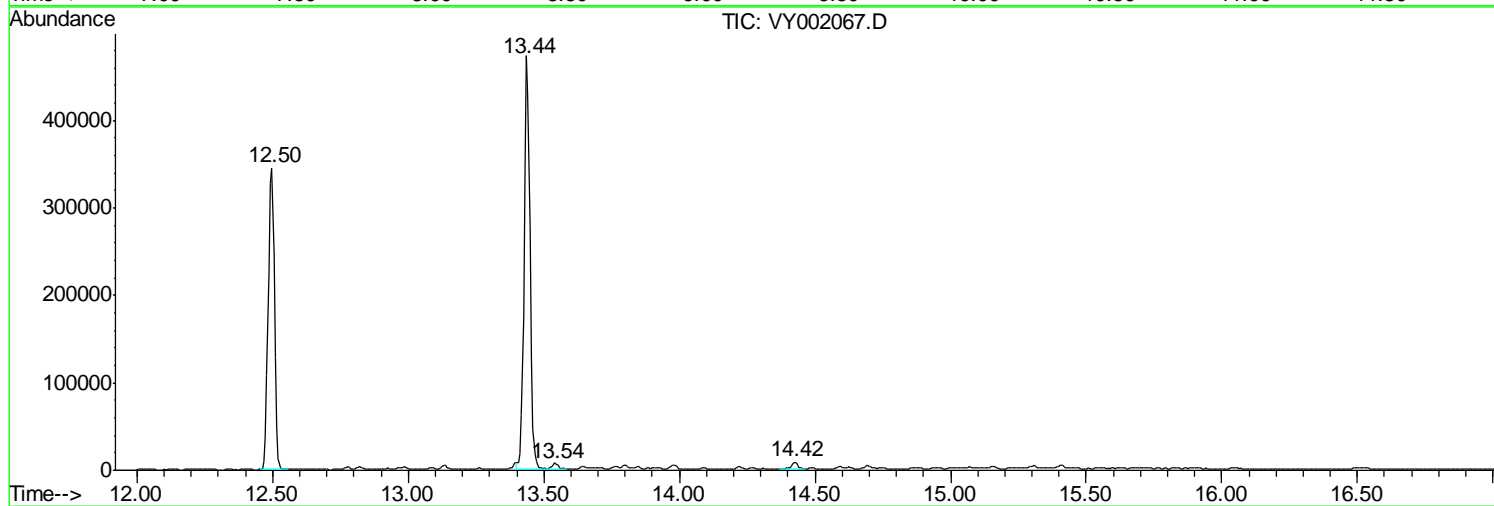
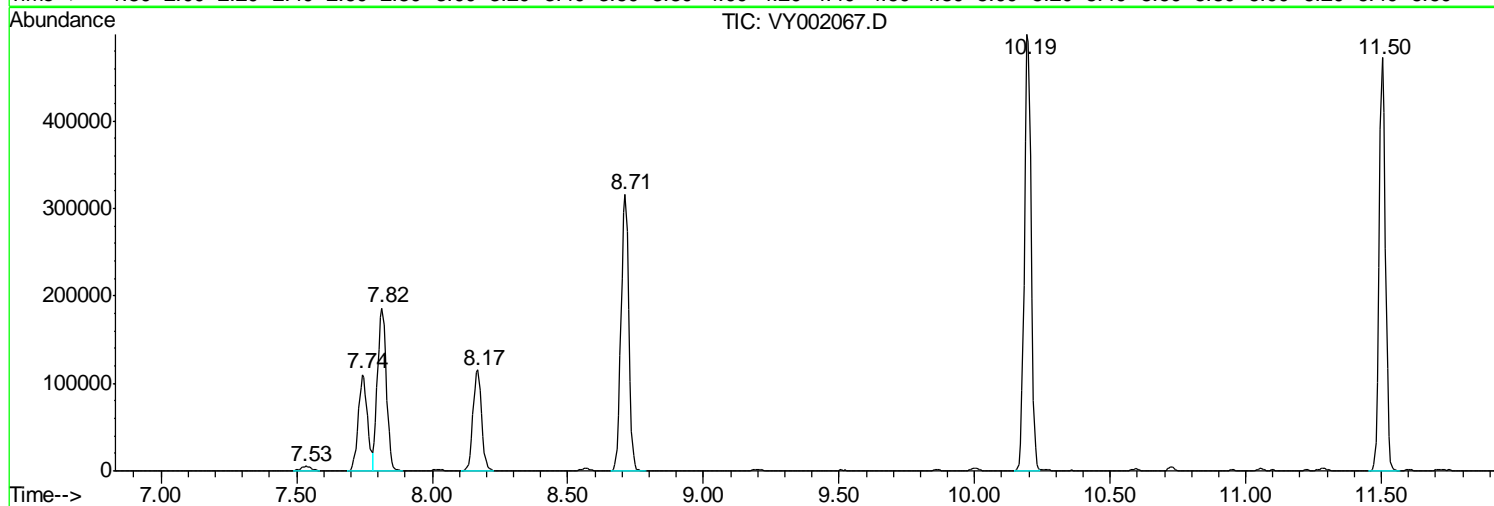
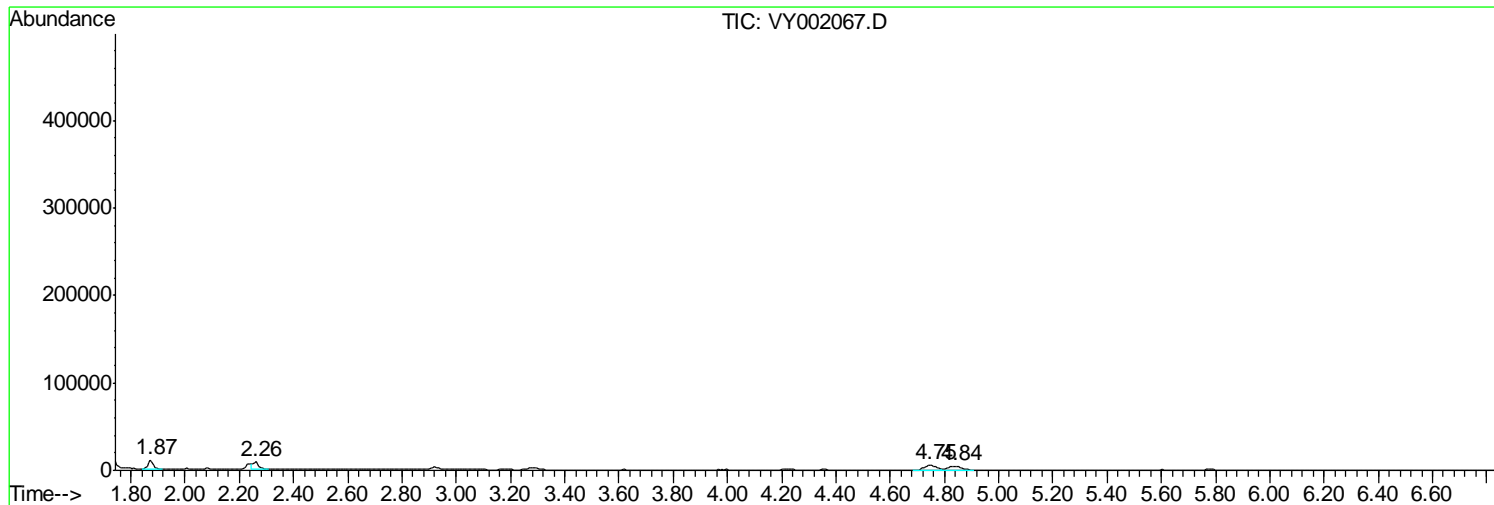
Sum of corrected areas: 4535148

Data Path : Z:\VOASRV\HPCHEM1\MSVOA Y\DATA\VY032520\
 Data File : VY002067.D
 Acq On : 25 Mar 2020 15:23
 Operator : SY/MD
 Sample : L2029-03
 Misc : 7.99G/5ML/MSVOA Y/SOIL
 ALS Vial : 9 Sample Multiplier: 1

Instrument :
 MSVOA_Y
 ClientSampleId :
 SB-1C-(0-2)

Quant Method : Z:\VOASRV\HPCHEM1\MSVOA_Y\METHODS\82Y030420S.M
 Quant Title : SW846 8260

TIC Library : C:\DATABASE\NIST11.L
 TIC Integration Parameters: LSCINT.P



Data Path : Z:\VOASRV\HPCHEM1\MSVOA_Y\DATA\VY032520\
Data File : VY002067.D
Acq On : 25 Mar 2020 15:23
Operator : SY/MD
Sample : L2029-03
Misc : 7.99G/5ML/MSVOA_Y/SOIL
ALS Vial : 9 Sample Multiplier: 1

Instrument :
MSVOA_Y
ClientSampleId :
SB-1C-(0-2)

Quant Method : Z:\VOASRV\HPCHEM1\MSVOA_Y\METHODS\82Y030420S.M
Quant Title : SW846 8260

TIC Library : C:\DATABASE\NIST11.L
TIC Integration Parameters: LSCINT.P

No Library Search Compounds Detected

Data Path : Z:\VOASRV\HPCHEM1\MSVOA_Y\DATA\VY032520\
Data File : VY002067.D
Acq On : 25 Mar 2020 15:23
Operator : SY/MD
Sample : L2029-03
Misc : 7.99G/5ML/MSVOA_Y/SOIL
ALS Vial : 9 Sample Multiplier: 1

Instrument :
MSVOA_Y
ClientSampleId :
SB-1C-(0-2)

Quant Method : Z:\VOASRV\HPCHEM1\MSVOA_Y\METHODS\82Y030420S.M
Quant Title : SW846 8260

TIC Library : C:\DATABASE\NIST11.L
TIC Integration Parameters: LSCINT.P

TIC Top Hit name	RT	EstConc	Units	Response	--Internal Standard--			
					#	RT	Resp	Conc
